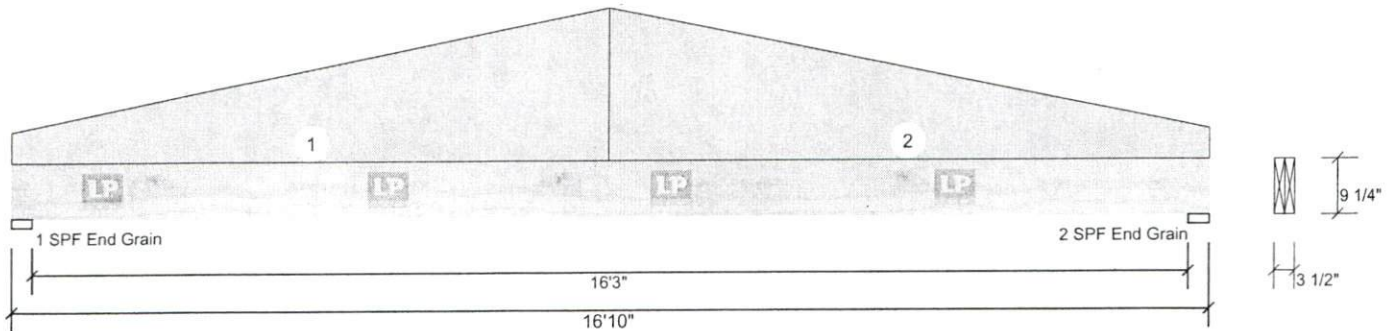




16' Garage Dr Header LP-LVL 2900Fb-2.0E 1.750" X 9.250" 2-Ply - PASSED Level: Level



Member Information

Type:	Girder
Plies:	2
Moisture Condition:	Dry
Deflection LL:	360
Deflection TL:	240
Importance:	Normal
Temperature:	Temp <= 100°F

Application:	Floor
Design Method:	ASD
Building Code:	IBC/IRC 2015
Load Sharing:	No
Deck:	Not Checked

Reactions UNPATTERNED lb (Uplift)

Brg	Live	Dead	Snow	Wind	Const
1	0	583	0	0	0
2	0	583	0	0	0

Bearings

Bearing	Length	Cap.	React D/L lb	Total	Ld. Case	Ld. Comb.
1 - SPF End Grain	3.500"	6%	583 / 0	583	Uniform	D
2 - SPF End Grain	3.500"	6%	583 / 0	583	Uniform	D

Analysis Results

Analysis	Actual	Location	Allowed	Capacity	Comb.	Case
Moment	2793 ft-lb	8'5"	11174 ft-lb	0.250 (25%)	D	Uniform
Shear	549 lb	15'10"	5536 lb	0.099 (10%)	D	Uniform
LL Defl inch	0.000 (L/999)	0	999.000 (L/0)	0.000 (0%)		
TL Defl inch	0.295 (L/667)	8'5 1/16"	0.819 (L/240)	0.360 (36%)	D	Uniform

Design Notes

- 1 Provide restraint at supports to ensure lateral stability.
- 2 Dead Load Deflection: Instant = 0.295", Long Term = 0.442"
- 3 Girders are designed to be supported on the bottom edge only.
- 4 Multiple plies must be fastened together as per manufacturer's details.
- 5 Top loads must be supported equally by all plies.
- 6 Top braced at bearings.
- 7 Bottom braced at bearings.
- 8 Lateral slenderness ratio based on single ply width.

ID	Load Type	Location	Trib Width	Side	Dead 0.9	Live 1	Snow 1.15	Wind 1.6	Const. 1.25	Comments
1	Tapered Start	0-0-0		Top	20 PLF	0 PLF	0 PLF	0 PLF	0 PLF	Gable Wall
	End	8-5-0			100 PLF	0 PLF	0 PLF	0 PLF	0 PLF	
2	Tapered Start	8-5-0		Top	100 PLF	0 PLF	0 PLF	0 PLF	0 PLF	Gable Wall
	End	16-10-0			20 PLF	0 PLF	0 PLF	0 PLF	0 PLF	
	Self Weight				9 PLF					

Notes
This component analysis is based on the loads, geometry and other conditions as entered by the user and listed in this report. The user is responsible to ensure the accuracy of the input and the applicability to the actual conditions of the structure for which this component is intended. This analysis is valid only for the product listed.
Copyright 2016 All rights reserved by Louisiana Pacific Corp. 414 Union St Suite 2000, Nashville, TN 37219

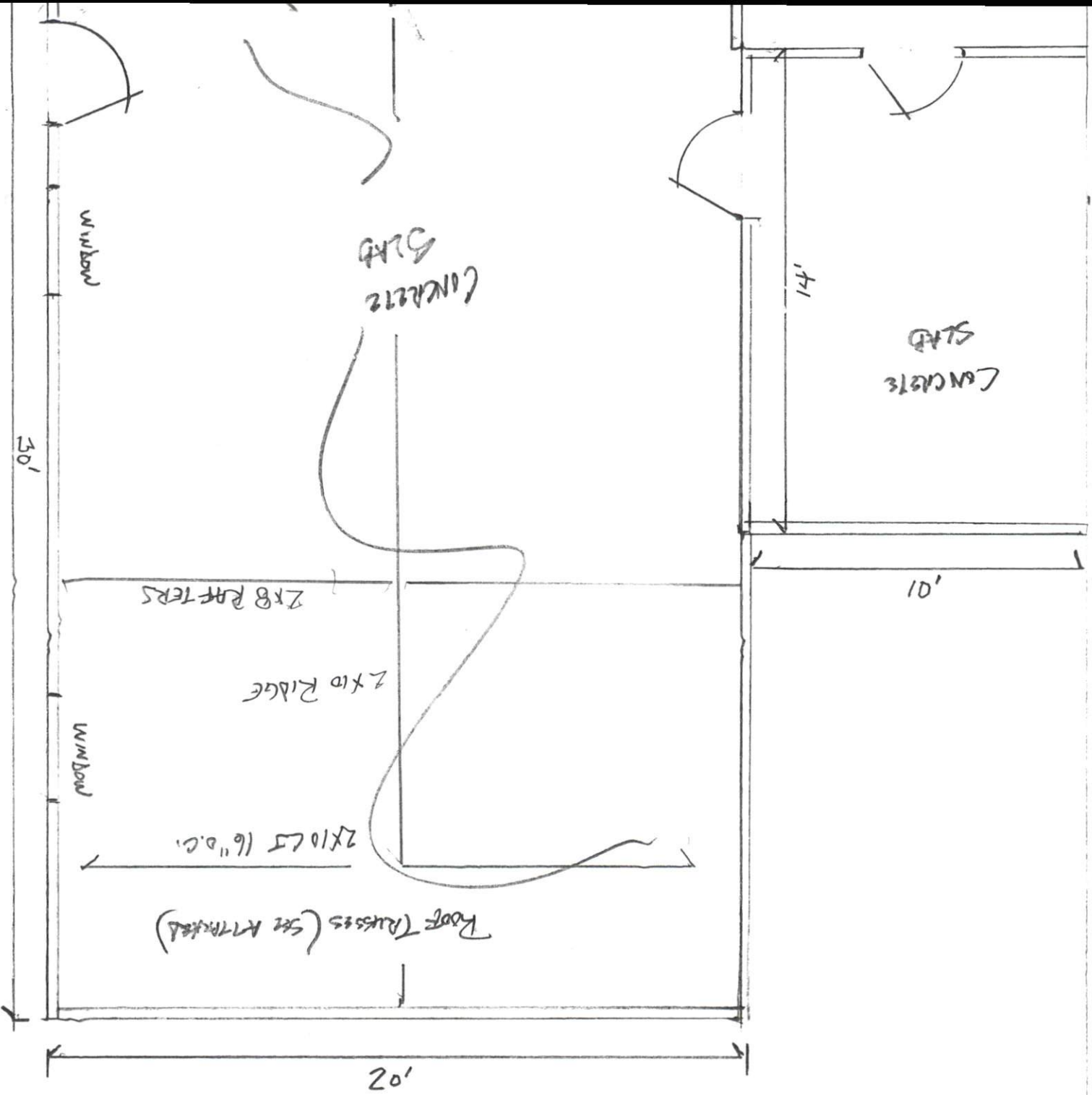
Manufacturer info
Louisiana-Pacific Corp
414 Union Street, Suite 2000
Nashville, TN 37219
(888) 820-0325
www.lpcorp.com
APA: PR-L280, ICC-ES: ESR-2403,
LADBS: RR-25783, Florida: FL15228

Locust Lumber Company
312 E. Main St., NC
United States
28097
(704) 888-4411



This design is valid until 6/30/2018

EXISTING SFD



ITS VILLAGE WAY
 Proposed Addition
 SCALE: 1/4" = 1'

