

30' x 30'

4/12 pitch

2- 2x10 Bands on perimeter

14x30 lean to on sides to be stick built

5- 6x6 post on sides 8 1/2' apart

4- 6x6 post on front and back

roll up door on front of building

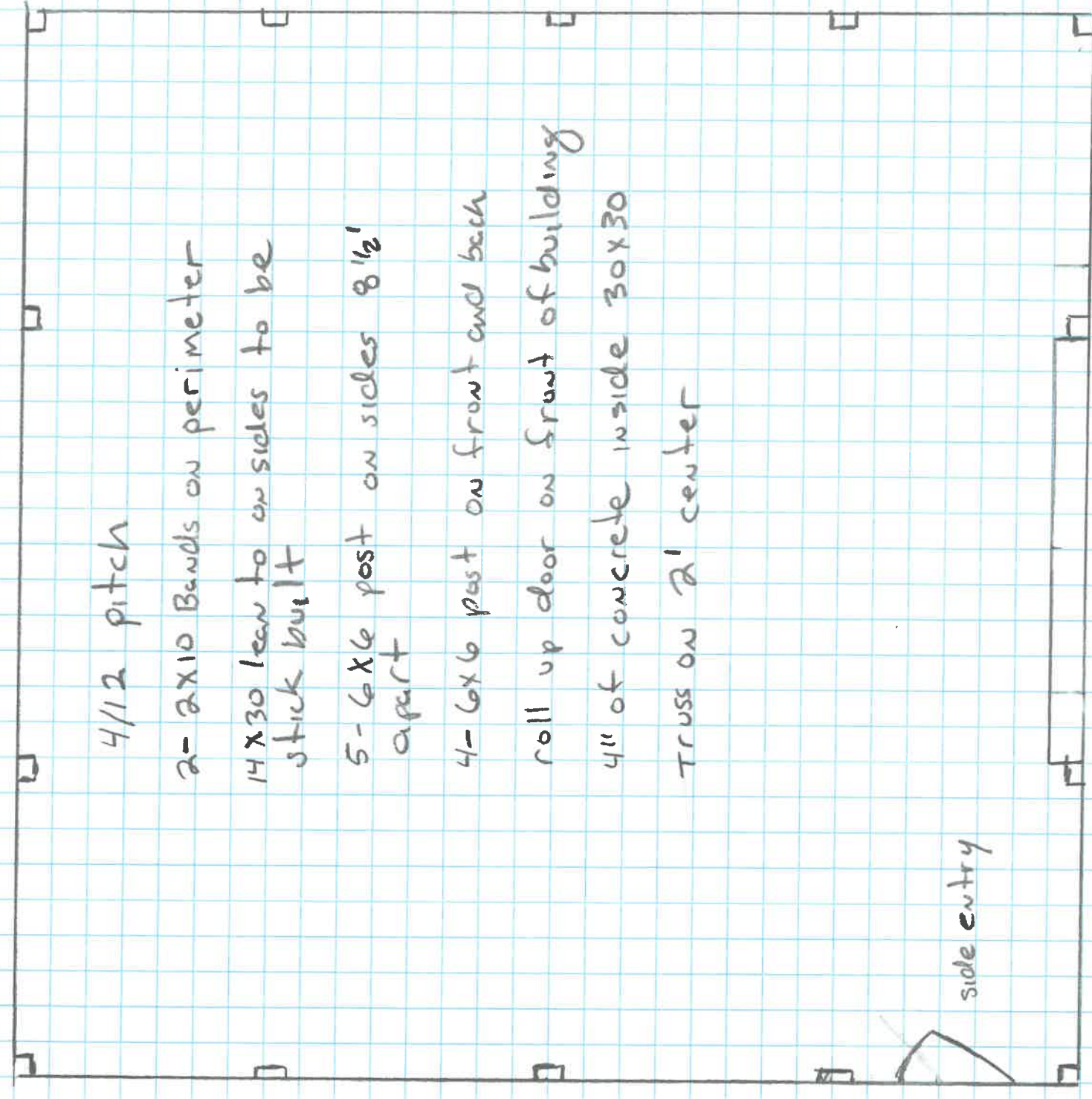
4" of concrete inside 30x30

Truss on 2' center

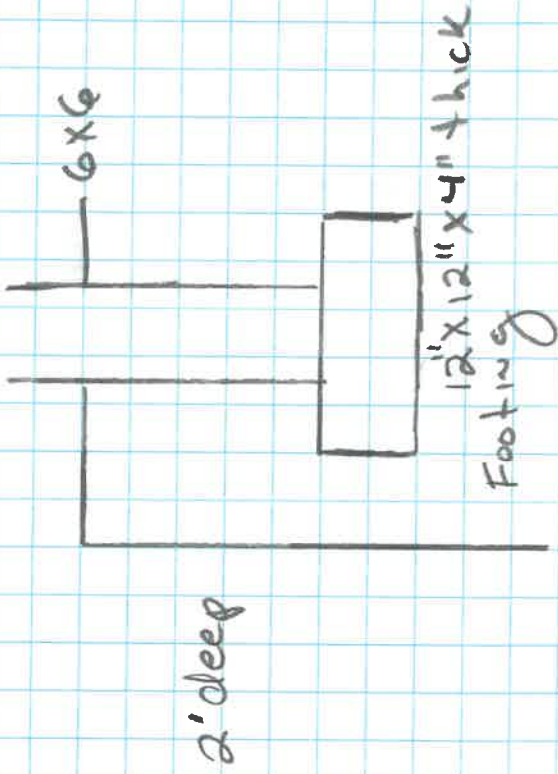
side entry

17' wide roll up door

1/4 scale



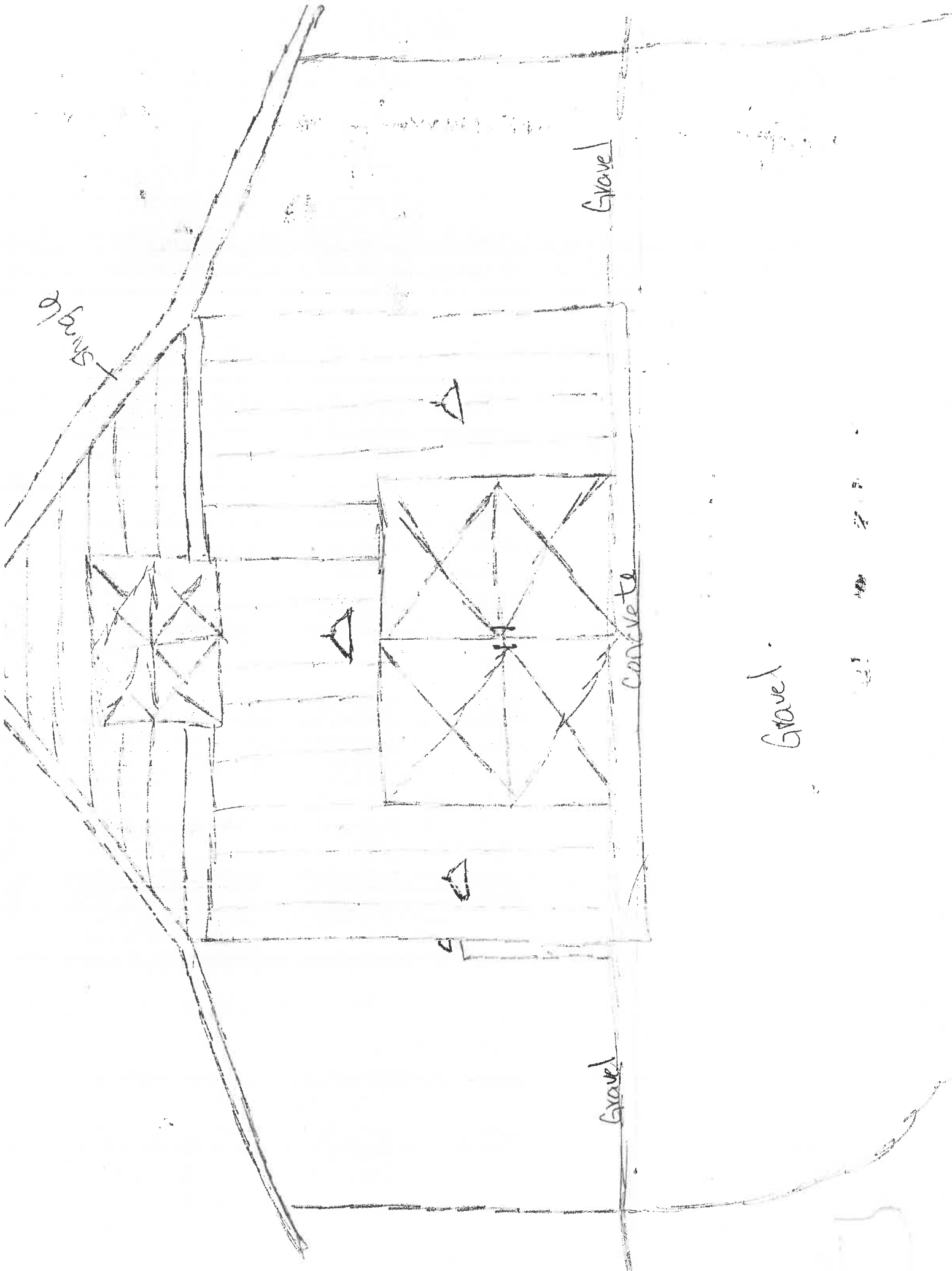
Footings for 6x6 poles



Adam Young

919-868-7303

adamyoung6@icloud.com



Single

Gravel

Concrete

Gravel

Gravel