

House

Top View

1/4" Scale

Existing Wood Ban on House

2"x10" Floor Joist

2"x10" Floor Joist

Decking Boards

6"x6" Post

6"x6" Post

2"x10" Girder

2"x10" Girder

2"x10" Girder

16'

18'

Front of Porch

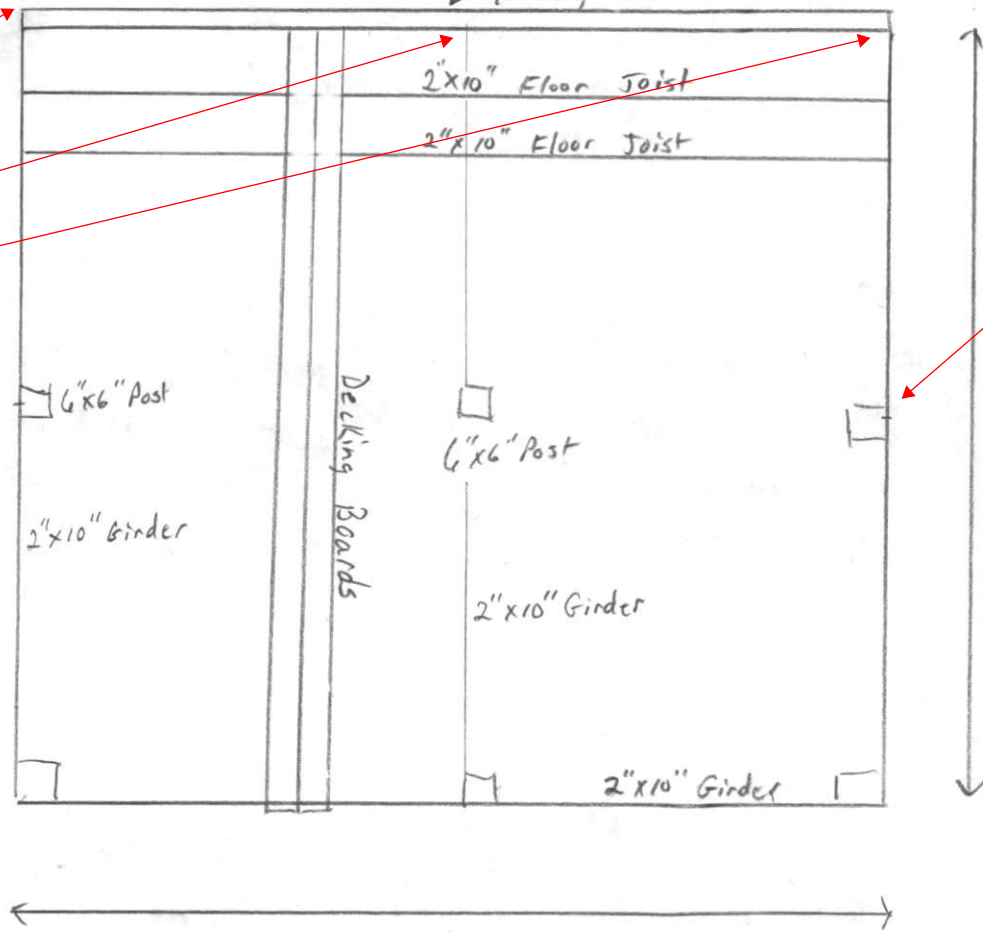
Provide a double 2x10 hanger to through bolted rim board for 2-2x10 exterior girder, or post support with footing below.

All Treated Wood Post 3' in Ground

All posts must have footing support underneath sized per appendix "M"

Left side

Right side



Right Side View
1/4" scale

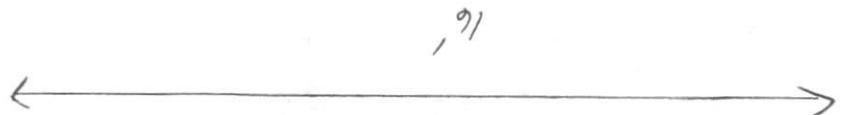
House

← Existing 2"x12" Wood Barn

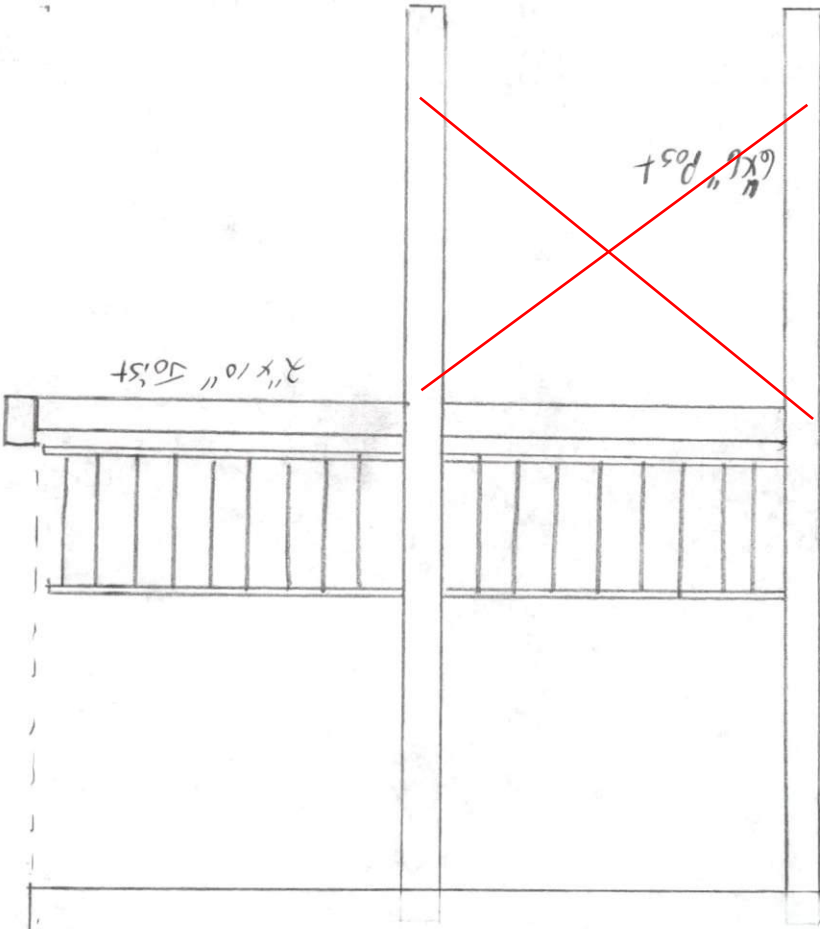
2"x10" Joist

6"x8" Post

Roof



All posts exceeding 48 inches above grade to walking surface must be "x" braced with minimum 2x6 through bolted with 5/8 bolts



Front View of Front Porch
1/4 Scale

Collar Ties
every third
rafter

Minimum
2x8 @
16" oc
ceiling
joists

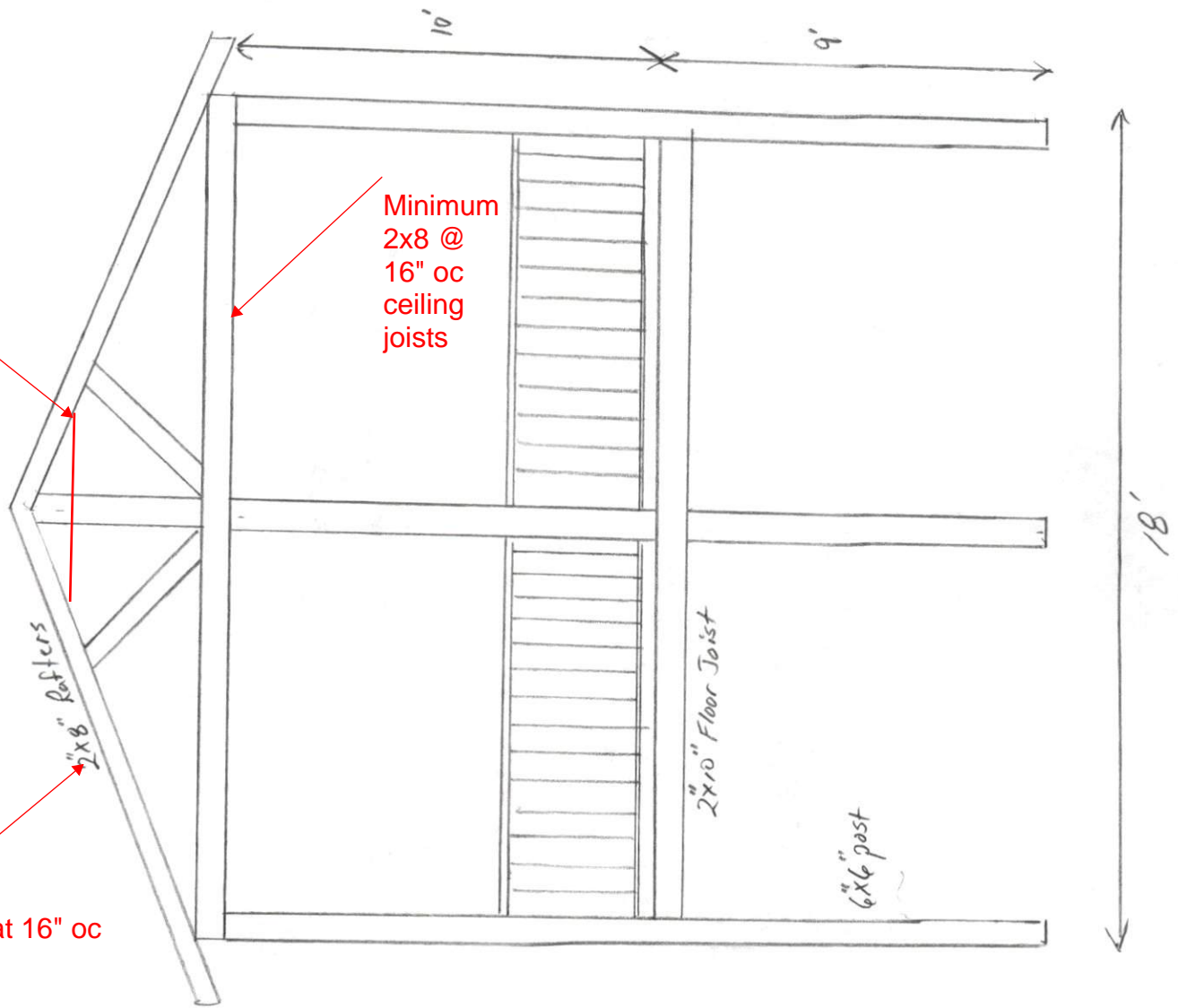
2x8 Rafter

Rafters at 16" oc

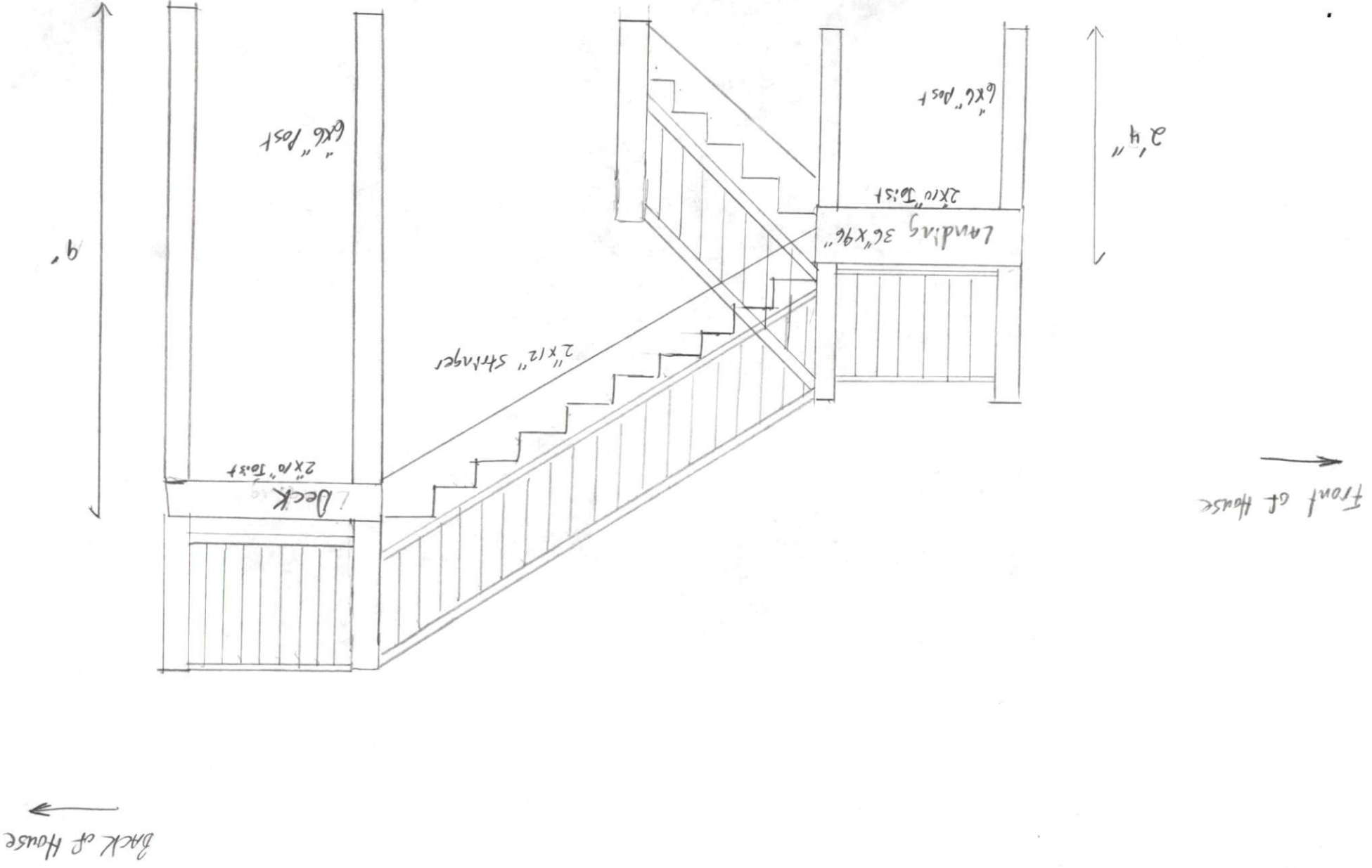
2x10 Floor Joist

6x6 post

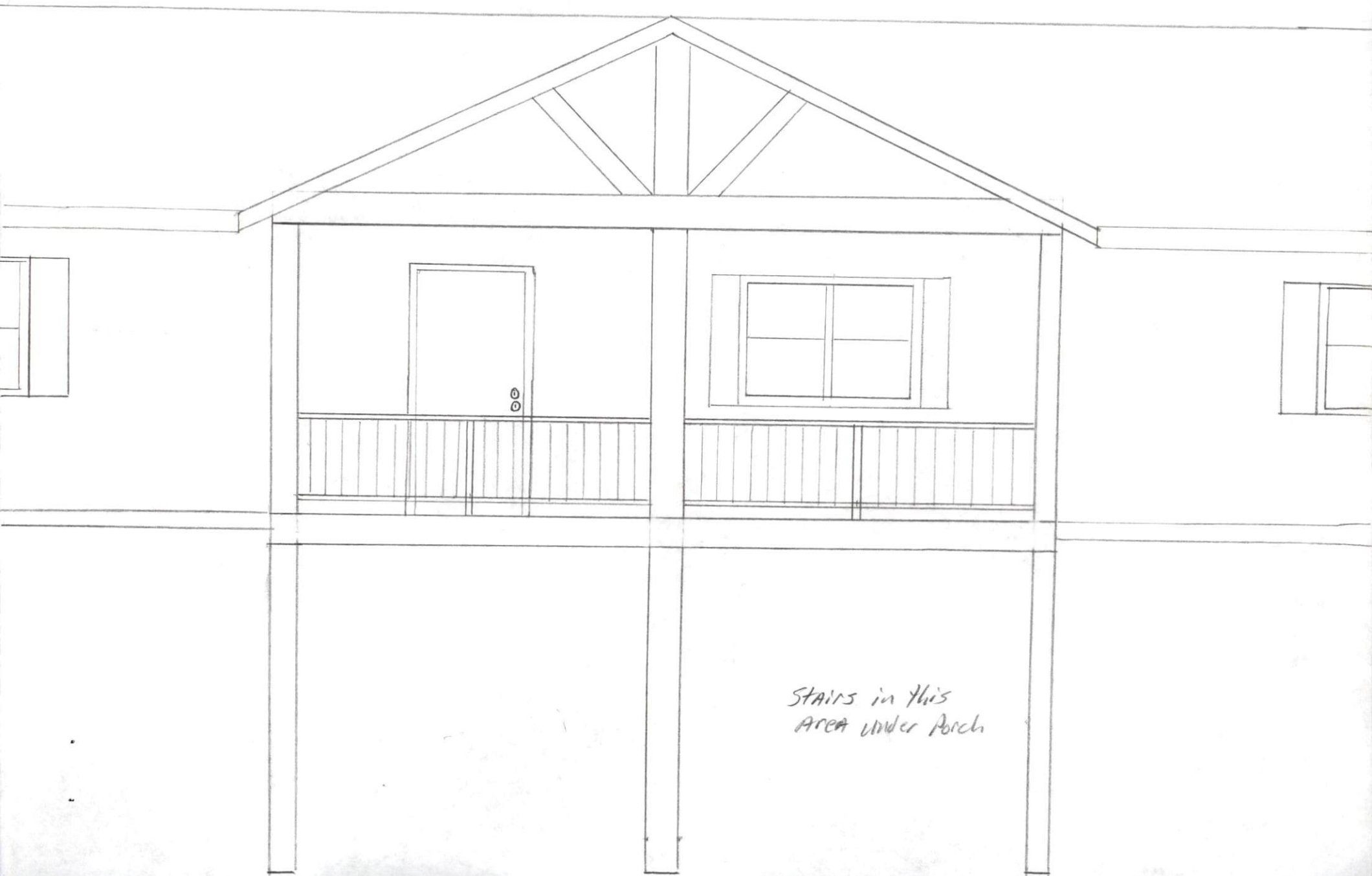
Decking
Board



Stairs Side View



Front Porch



STAIRS in this
AREA under Porch