

Rick Earnhardt
 4011 Sheriff Johnson Rd.
 Lillington, NC 27546

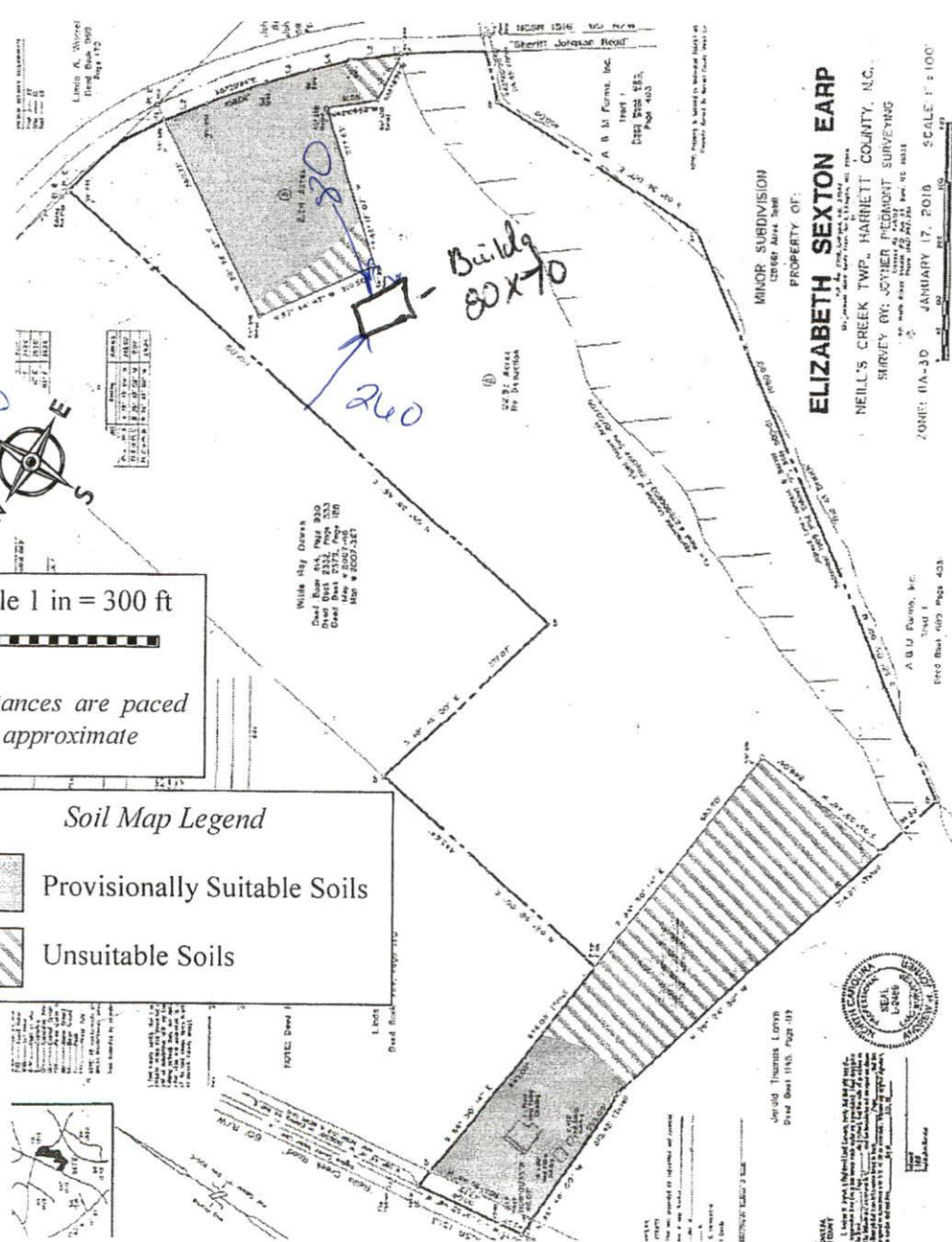
HAL OWEN & ASSOCIATES, INC.



Preliminary Soil Investigation
 Lot 1 and Lot 3 Elizabeth Sexton Earp Property
 26 January 2018

Soil Map

Revision
 Pole Barn moved
 Bldg over
 USE
 #BEDROOMS
 3/1/19
 Zoning Administrator



Scale 1 in = 300 ft
 Distances are paced and approximate

Soil Map Legend
 Provisionally Suitable Soils
 Unsuitable Soils

MINOR SUBDIVISION
 PROPERTY OF:
ELIZABETH SEXTON EARP
 NEILL'S CREEK TWP., HARRIETT COUNTY, N.C.
 SURVEY BY: JOSHUA J. HARRIETT SURVEYING
 10000 N. HARRIETT RD., HARRIETT, NC 27830
 PHONE: 817-422-1111 FAX: 817-422-1111
 ZONE: HA-3D JANUARY 17, 2010 SCALE: 1" = 100'