

COMMENTS: _____

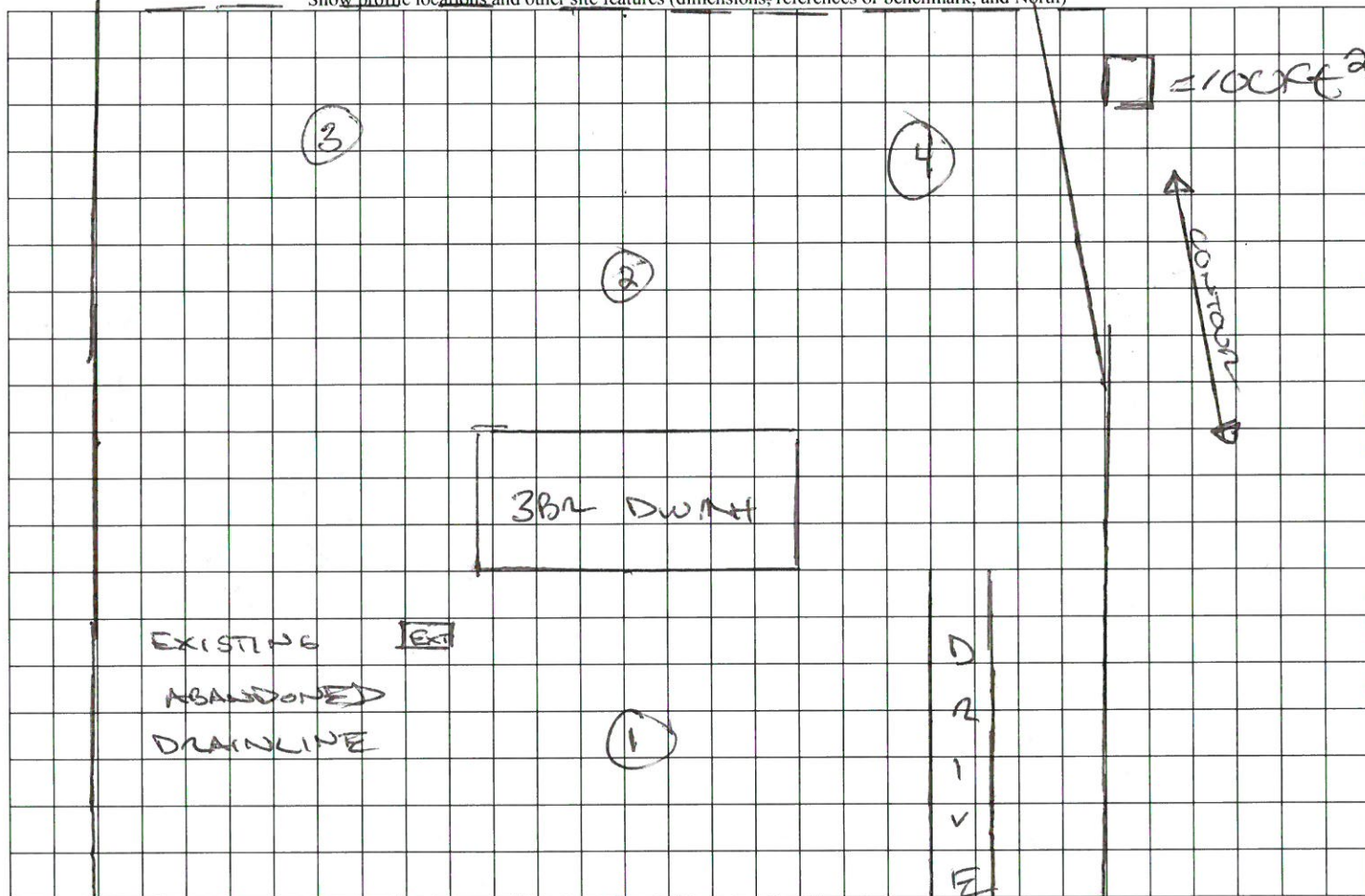
LANDSCAPE POSITIONS	GROUP	TEXTURES	.1955 LTAR	CONSISTENCE MOIST	WET
R-RIDGE	I	S-SAND	1.2 - 0.8	VFR-VERY FRIABLE	NS-NON-STICKY
S-SHOULDER SLOPE		LS-LOAMY SAND		FR-FRIABLE	SS-SLIGHTY STICKY
L-LINEAR SLOPE	II	SL-SANDY LOAM	0.8 - 0.6	FI-FIRM	S-STICKY
FS-FOOT SLOPE		L-LOAM		VFI-VERY FIRM	VS-VERY STICKY
N-NOSE SLOPE				EFI-EXTREMELY FIRM	NP-NON-PLASTIC
H-HEAD SLOPE	III	SI-SILT	0.6 - 0.3		SP-SLIGHTLY STICKY
CC-CONCLAVE SLOPE		SIL-SILT LOAM			P-PLASTIC
CV-CONVEX SLOPE		CL-CLAY LOAM			VP-VERY PLASTIC
T-TERRACE		SCL-SANDY CLAY LOAM			
FP-FLOOD PLAN	IV	SIC-SILTY CLAY	0.4 - 0.1		
		C-CLAY			
		SC-SANDY CLAY			

STRUCTURE
 SG-SINGLE GRAIN
 M- MASSIVE
 CR-CRUMB
 GR-GRANULAR
 SBK-SUBANGULAR BLOCKY
 ABK-ANGULAR BLOCKY
 PL-PLATY
 PR-PRISMATIC

MINERALOGY
 SLIGHTLY EXPANSIVE
 EXPANSIVE

* LOT VERY FLAT
 ABLE TO RUN DEEP
 FROM SHALLOW TO DEEP
 FRONT → BACK
 < 6 IN VARIANCE

TREE LINE (90 FT FROM REAR)
 Show profile locations and other site features (dimensions, references or benchmark, and North)



OLD STAGE RD. S.