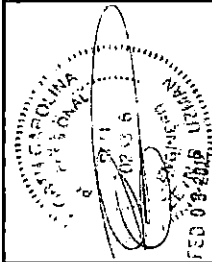


BEFORE

1

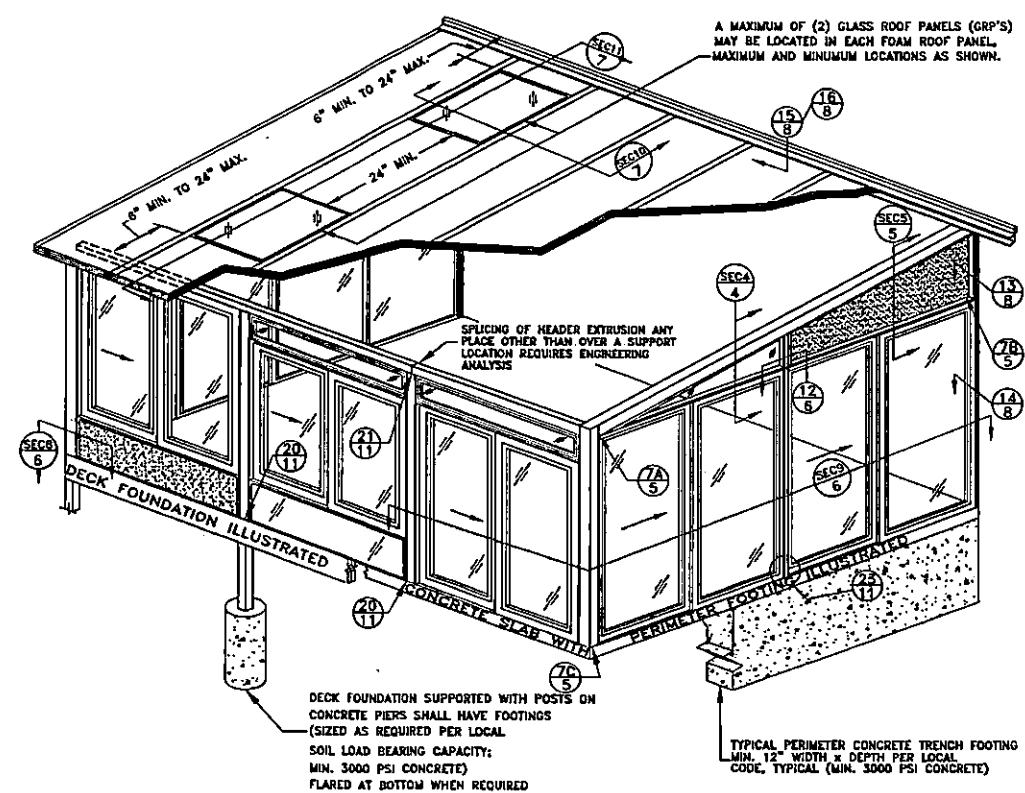


PARTS INDEX

*PARTS ALSO AVAILABLE FOR 4-5/8" AND 6" ROOF THICKNESS

PICTURE	DESCRIPTION	DRAWING #
	SD HEADER SUPPORT	1-2079A
	HD HEADER SUPPORT	1-2089A
	HEADER ARM	1-0214A
	HEADER BEARING PLATE 6" LONG GALV. STEEL	8-2111
	H SUPPORT	1-2088A
	H REINFORCING GALV. STEEL	8-2003
	HD CORNER POST	1-2078A
	CORNER POST COVER	1-2081A
	HD 2-1/2" ANGLE BRACKET	1-2083
	2-1/2" ANGLE BRACKET	8-2108A
	GANGING POST	1-2082
	WALL POST	1-2040
	WALL POST CAP	1-2051
	MASTER FRAME HEAD	1-0101C
	MASTER FRAME SILL	1-0102B
	MASTER FRAME SIDE	1-0103B
	1-LITE MALE	1-2058
	1-LITE FEMALE	1-2087A
	WALL EXPANDER	1-0203
	FLOOR EXPANDER	1-2058
	1-3/4" FLOOR EXPANDER	1-2057C
	PANEL CAP	1-2035
	AACA WIND HORIZONTAL	1-2075
	AACA WIND VERTICAL	1-2074
	FASCIA, 3" *	1-0238A
	PANEL HANGER, 3" *	1-0210
	FOAM KNEEWALL TRIM	1-2044
	I-BEAM, 3" *	1-0217B
	1/8" GLAZING STOP	2-2006
	5/8" GLAZING STOP (IG)	2-2005

PICTURE	DESCRIPTION	DRAWING #
	6" RIDGE BEAM	1-0218
	8" RIDGE BEAM	1-0229
	WALL POST SUPPORT BRACKET	1-2053
	GLASS WIDTH	1-0105A
	GLASS HEIGHT	1-0104
	SCREEN HEIGHT	1-0106C
	SCREEN WIDTH	1-0107A
	SD HEADER REINFORCEMENT 1-1/2" x 2" x 11 GA. GALV. RECTANGULAR STEEL TUBE	8-0089
	HD HEADER REINFORCEMENT 1-1/2" x 4" x 11 GA. GALV. RECTANGULAR STEEL TUBE	8-0090
	1.32" ALUM. SQUARE TUBE	1-2022
	1.5" ALUM. SQUARE TUBE	1-0201
	2" GLAZING BAR	1-0501
	AV UTILITY POST	1-2092
	2-1/2" x 2-1/2" x 3/16" STEEL TUBE	8-0091
	WALL POST REINFORCEMENT, GALV. STEEL	8-2004
	SASH STILE REINFORCEMENT, GALVANIZED STEEL	8-0028
	3" GRP MALE FRAME *	1-0114
	3" GRP FEMALE FRAME *	1-0115
	1/2" x 5/8" ANGLE	1-0121
	HANGER TAB	1-0209
	RIDGE POST TIE DOWN STRAP, 6"	8-0115
	ALUM. RIDGE POST BRACKET	8-2002
	I-BEAM STEEL STIFFENER STRAP (FOR 3" I-BEAM ONLY)	8-0051
	3" ROOF CORNER TIE DOWN KIT *	P/N 07187
	4-5/8" ROOF CORNER TIE DOWN KIT *	P/N 07188
	6" ROOF CORNER TIE DOWN KIT *	P/N 07189



AVR SUNROOM ENCLOSURE

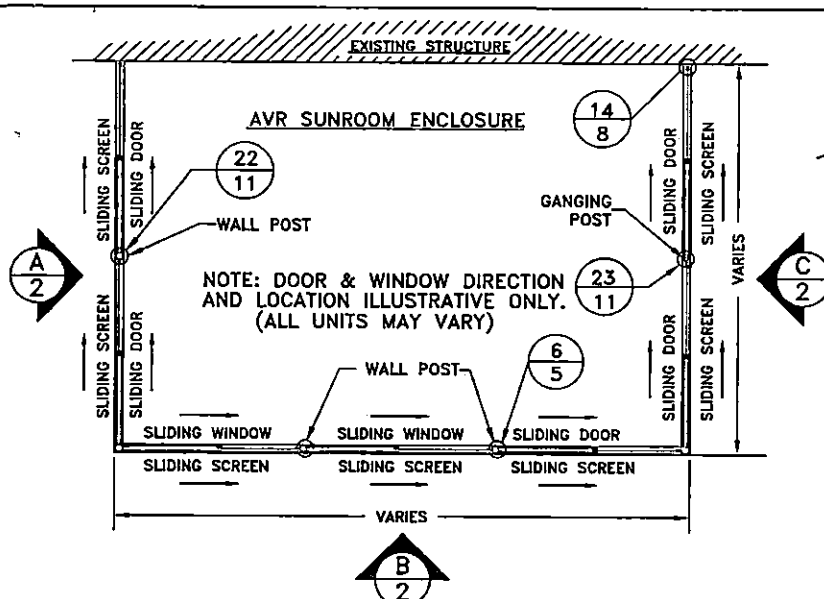
(SINGLE SLOPE ROOF SHOWN - SEE SHEET 2 OF 11 FOR GABLE ROOF)

DRAWN BY: VHG
DATE: 09-17-03
SCALE: NTS
VERSION: E.1(10/25/0)

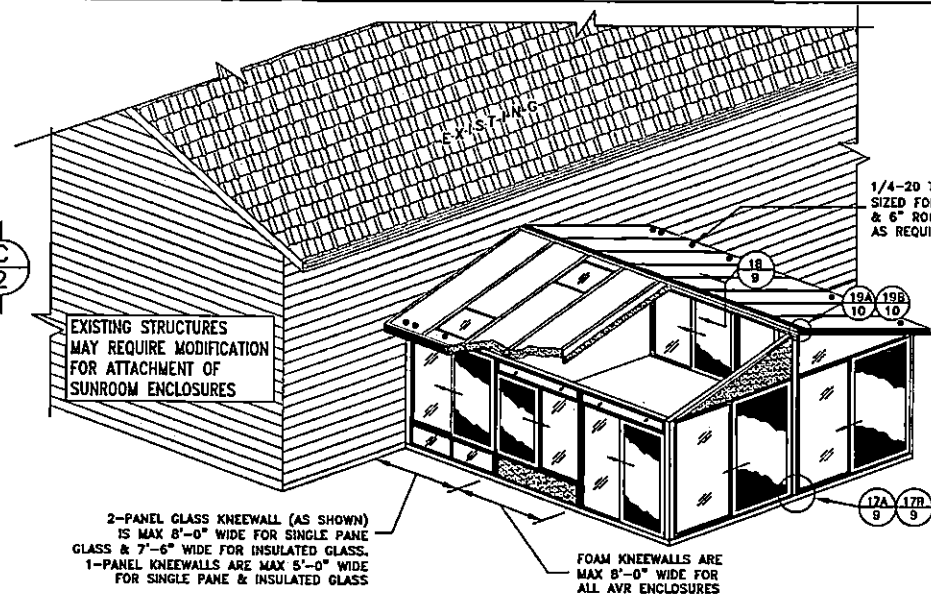
patio ENCLOSURES, INC.
AN EMPLOYEE OWNED COMPANY
720 E. HIGHLAND ROAD
MACEDONIA, OHIO 44056

THIS DRAWING IS THE PROPERTY OF PATIO ENCLOSURES, INC. ALL RIGHTS RESERVED. REPLICATION OF THIS DRAWING IN ANY FORM IS NOT PERMITTED WITHOUT THE EXPRESSED WRITTEN CONSENT OF PATIO ENCLOSURES, INC.
THE STANDARD PLANS, ELEVATIONS, SECTIONS & DETAILS CONTAINED HEREIN ARE IN ACCORDANCE WITH INSTALLATION PROCEDURES ESTABLISHED BY PATIO ENCLOSURES, INC. AND ARE FOR GENERAL REFERENCE. SEE INDIVIDUAL JOB SPECIFIC FOR SITE/CITY PROJECTIONS, UNIT WEIGHS & WALL FINISHES.

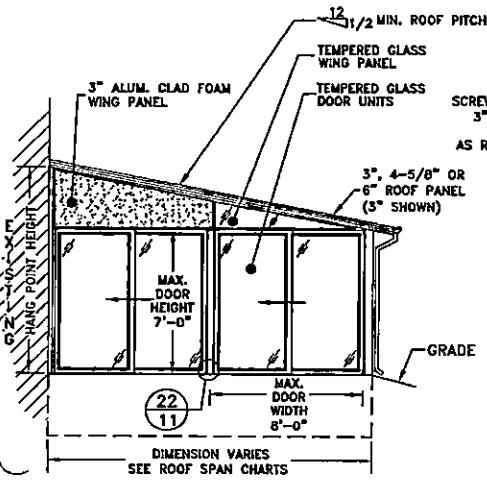
STANDARD RESIDENTIAL AVR DETAILS



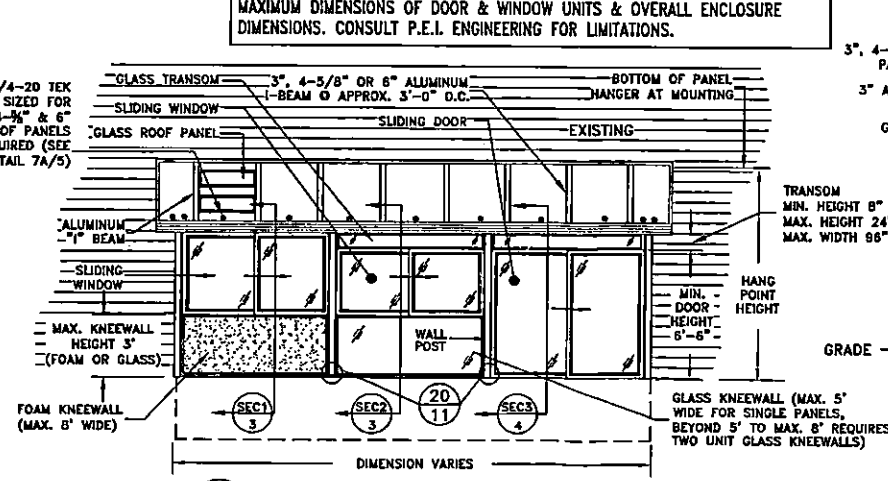
PLAN VIEW OF SINGLE SLOPE ROOF ENCLOSURE



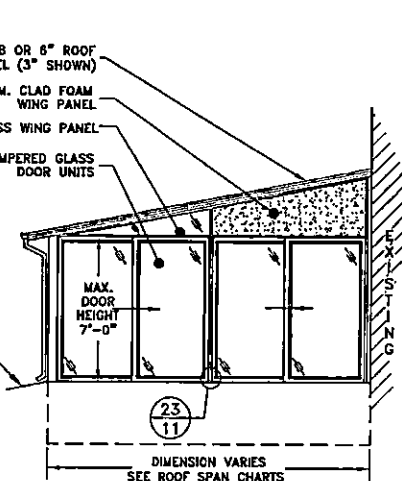
ISO VIEW OF GABLE ROOF ENCLOSURE



A - WALL ELEVATION
AVR SUNROOM ENCLOSURE

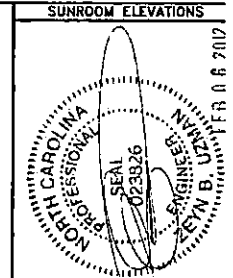


B - WALL ELEVATION
AVR SUNROOM ENCLOSURE



C - WALL ELEVATION
AVR SUNROOM ENCLOSURE

NOTE: BUILDING CODE REQUIREMENTS FOR WIND AND/OR SNOW LOADING CAN REDUCE MAXIMUM DIMENSIONS OF DOOR & WINDOW UNITS & OVERALL ENCLOSURE DIMENSIONS. CONSULT P.E.I. ENGINEERING FOR LIMITATIONS.



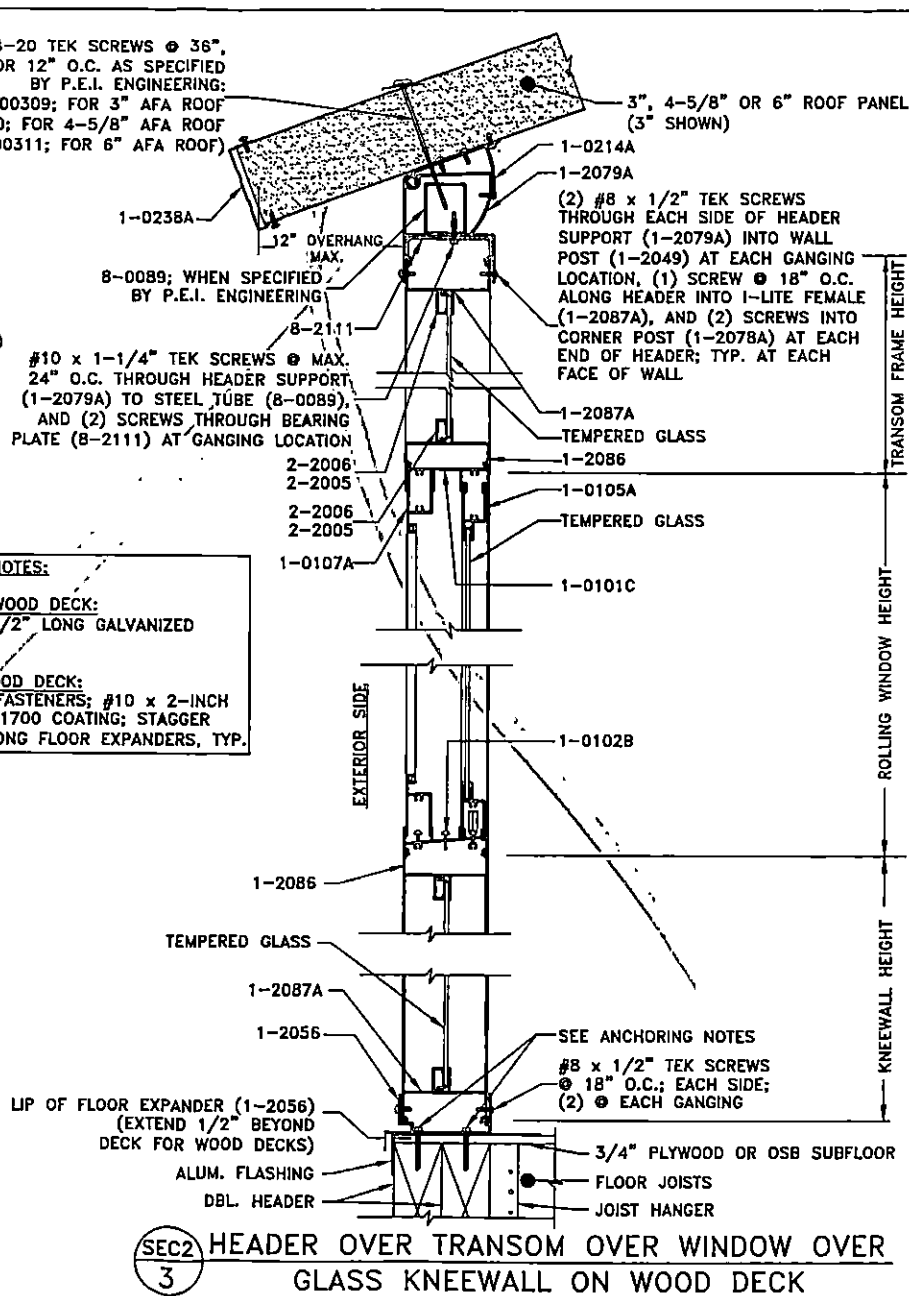
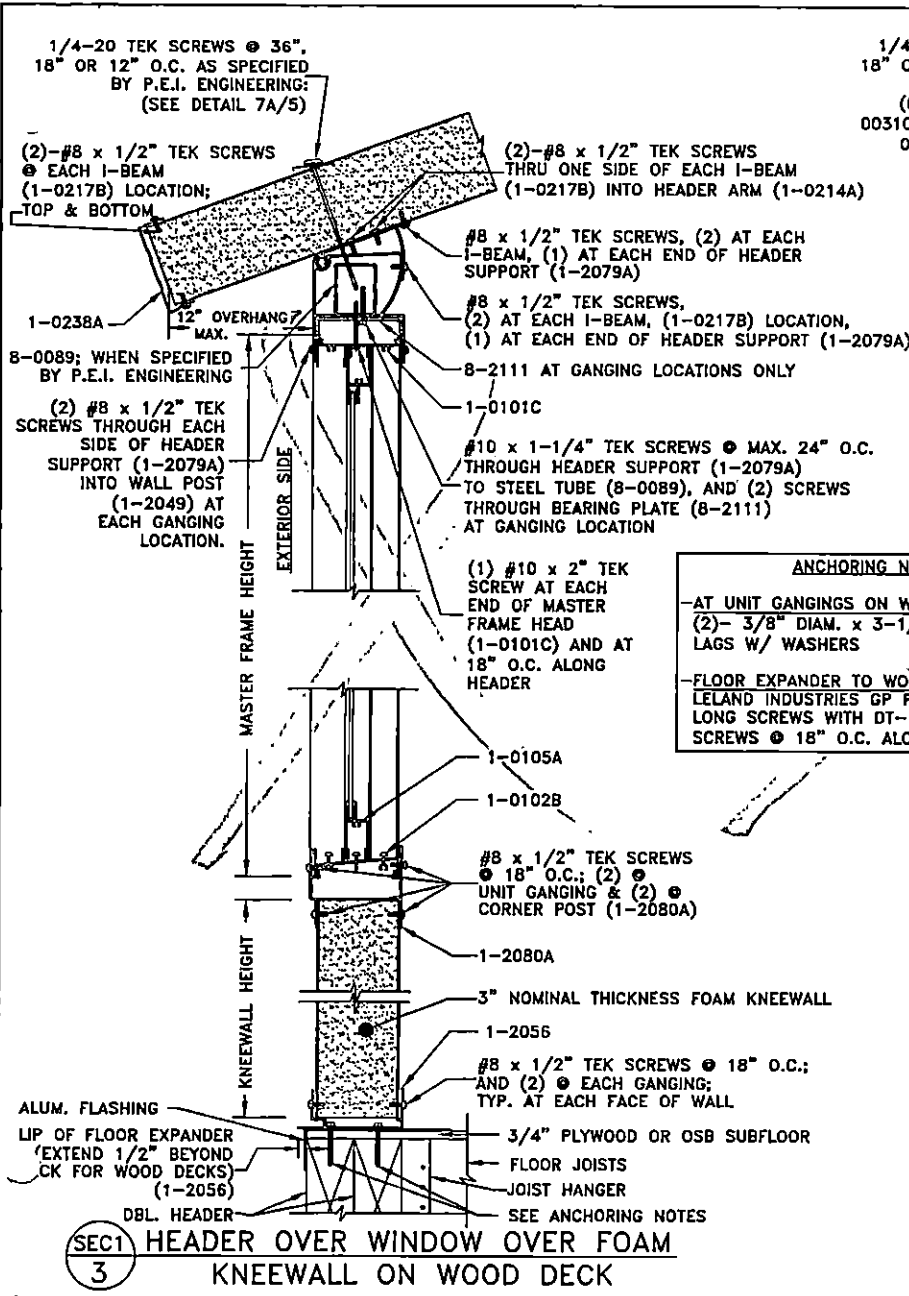
DRAWN BY: VNG
DATE: 09-17-03
SCALE: NTS
VERSION: E.1(10/25/10)

patio ENCLOSURES, INC.
AN EMPLOYEE OWNED COMPANY

720 E. HIGHLAND ROAD
MACEDONIA, OHIO 44056

THIS DRAWING IS THE PROPERTY OF PATIO ENCLOSURES, INC. ALL RIGHTS RESERVED. WITHOUT THE EXPRESSED WRITTEN CONSENT OF PATIO ENCLOSURES, INC. NO PART OF THIS DRAWING IS TO BE REPRODUCED OR TRANSMITTED IN ANY FORM OR BY ANY MEANS, ELECTRONIC OR MECHANICAL, INCLUDING PHOTOCOPYING, RECORDING, OR BY ANY INFORMATION STORAGE AND RETRIEVAL SYSTEM. SEE INSTALLATION PROCEDURES ESTABLISHED BY PATIO ENCLOSURES, INC. AND ARE THE GENERAL REFERENCE. SEE INDIVIDUAL JOB SUBMITTAL FOR SPECIFIC PROTECTIONS, UNIT WIDTHS & WALL HEIGHTS.

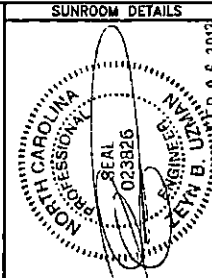
STANDARD RESIDENTIAL AVR DETAILS



ANCHORING NOTES:

-AT UNIT GANGINGS ON WOOD DECK:
(2)- 3/8" DIAM. x 3-1/2" LONG GALVANIZED LAGS W/ WASHERS

-FLOOR EXPANDER TO WOOD DECK:
LELAND INDUSTRIES GP FASTENERS; #10 x 2-INCH LONG SCREWS WITH DT-1700 COATING; STAGGER SCREWS @ 18" O.C. ALONG FLOOR EXPANDERS, TYP.



DRAWN BY: VNG
DATE: 09-17-03
SCALE: NTS
VERSION: E:11/02/03

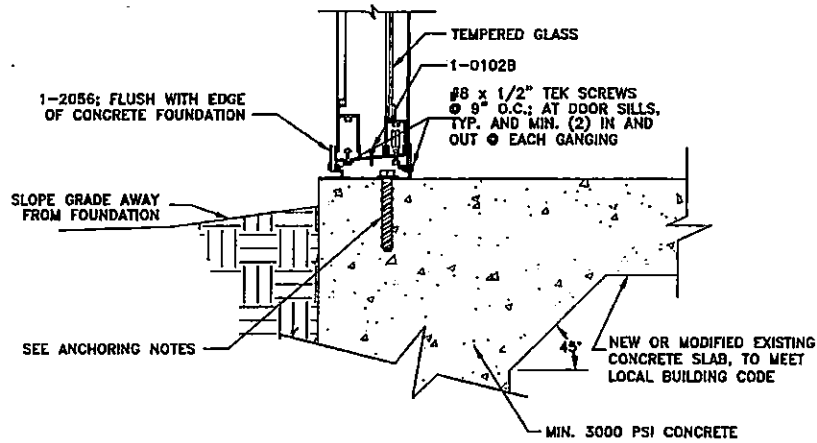
patio ENCLOSURES, INC.
AN EMPLOYEE OWNED COMPANY
720 E. HIGHLAND ROAD
MACEDONIA, OHIO 44056

THIS DRAWING IS THE PROPERTY OF PATIO ENCLOSURES, INC. ALL RIGHTS RESERVED. REPRODUCTION OF THIS DRAWING IN ANY FORM IS NOT PERMITTED WITHOUT THE EXPRESSED WRITTEN CONSENT OF PATIO ENCLOSURES, INC.

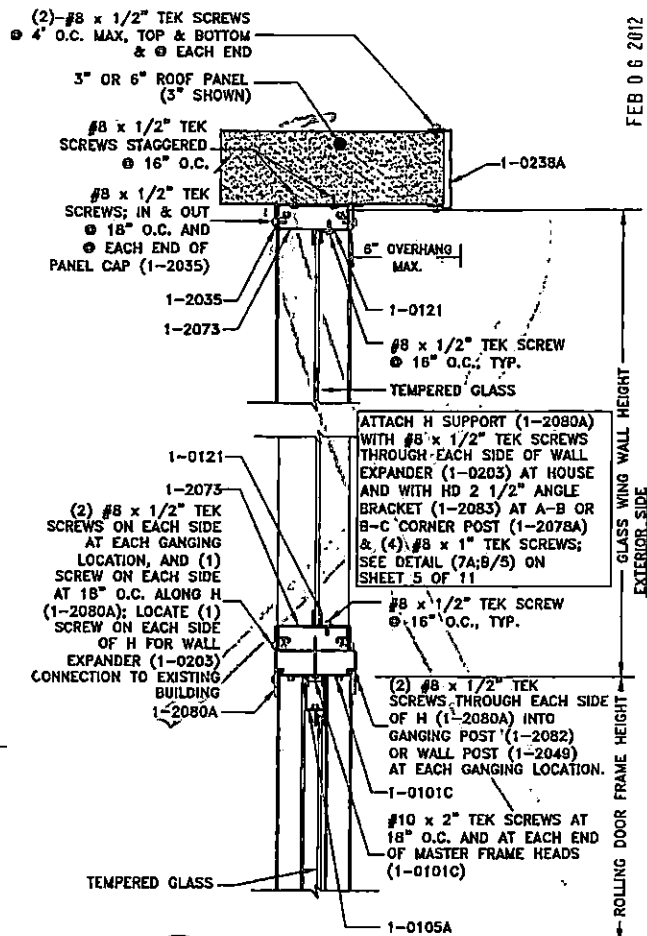
THE STANDARD PLANS, ELEVATIONS, SECTIONS & DETAILS CONTAINED HEREIN ARE IN ACCORDANCE WITH INSTALLATION PROCEDURES ESTABLISHED BY PATIO ENCLOSURES, INC. AND ARE FOR GENERAL REFERENCE. CONSULT THE ORIGINAL DRAWINGS FOR SPECIFIC PROJECTING, UNIT WIDTHS & WALL HEIGHTS.

STANDARD RESIDENTIAL AVR DETAILS

ANCHORING NOTES:
AT UNIT GANGINGS ON CONCRETE FOUNDATION:
 (2) 3/8" DIAM. x 3" WEDGE-BOLTS
FLOOR EXPANDER TO CONCRETE FOUNDATION:
 1/4" x 1-1/4" LONG ZAMAC NAILIN
 ANCHORS STAGGERED @ 18" O.C. ALONG
 FLOOR EXPANDER



3
4 SLIDING GLASS DOOR SILL ON CONCRETE FOUNDATION

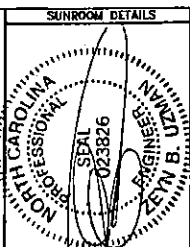


SEC 4
4 GLASS WING OVER
SLIDING GLASS DOOR

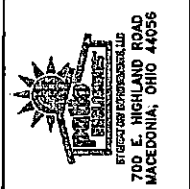
FEB 06 2012

GLASS WING WALL HEIGHT
EXTERIOR SIDE

GLASS WING WALL HEIGHT
ROLLING DOOR FRAME HEIGHT



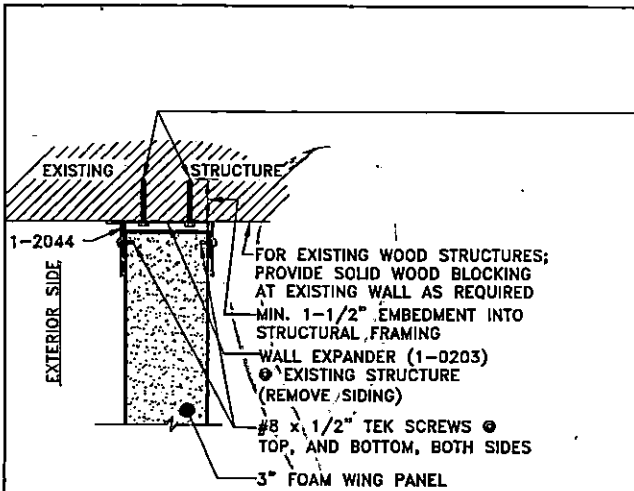
DRAWN BY: WNG
 DATE: 05-31-11
 SCALE: NTS
 VERSION: 05-31-11



THIS DRAWING IS THE PROPERTY OF GREAT DAY ENTERPRISES, LLC. ALL RIGHTS RESERVED. NO PART OF THIS DRAWING IS TO BE REPRODUCED OR TRANSMITTED IN ANY FORM OR BY ANY MEANS, ELECTRONIC OR MECHANICAL, WITHOUT THE EXPRESS WRITTEN CONSENT OF GREAT DAY ENTERPRISES, LLC.

THE ENGINEER HAS REVIEWED, REVISIONS & DETAILS CONTAINED HEREIN ARE IN ACCORDANCE WITH INSTALLATION PROCEDURES ESTABLISHED BY FACTORY MANUFACTURER'S RECOMMENDATIONS AND/OR INDUSTRY PRACTICES. CONSULT WITH THE MANUFACTURER FOR SPECIFIC PARAMETERS, UNIT WIDTHS & WALL HEIGHTS.

STANDARD
AVR DETAILS

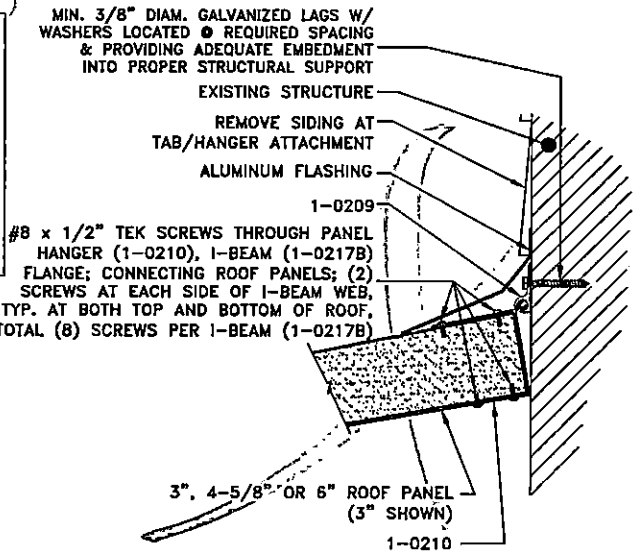


ATTACHING SUNROOM WALL EXPANDER TO EXISTING STRUCTURE:
 WOOD FRAMED STRUCTURES & WOOD FRAMING WITH BRICK VENEER USE 1/4-INCH DIAMETER GALVANIZED LAGS & WASHERS PROVIDING A MINIMUM 1-1/2-INCH EMBEDMENT INTO WOOD FRAMING OR WOOD BLOCKING INSTALLED AND NAILED TO WOOD FRAMING AT ALL LOCATIONS NOTED BELOW. FOR BLOCK MASONRY, BLOCK WITH BRICK FACING, OR CONCRETE, USE 1/4-INCH DIAMETER TAPCON LE FASTENERS PROVIDING 1-3/4-INCH EMBEDMENT INTO MASONRY OR CONCRETE AT ALL LOCATIONS NOTED BELOW.
BEARING WALLS:
 LOCATE (2) FASTENERS NEAR FLOOR LEVEL, (2) AT KNEEWALL OR RAILING HEIGHT, (2) AT TRANSOM, & (2) NEAR HEADER HEIGHT, INSTALL SINGLE FASTENERS LOCATED AT 16" O.C. VERTICALLY AND STAGGERED ALONG THE EXPANDER HEIGHT BETWEEN DOUBLE FASTENER LOCATIONS TYPICAL.
NON-BEARING WALLS:
 LOCATE (2) FASTENERS NEAR FLOOR, (2) AT KNEEWALL OR RAILING HEIGHT, (2) AT TRANSOM HEIGHT, (2) AT H, & (2) NEAR TOP END OF EXPANDER. INSTALL SINGLE FASTENERS LOCATED AT 16" O.C. VERTICALLY AND STAGGERED ALONG THE EXPANDER HEIGHT BETWEEN DOUBLE FASTENER LOCATIONS TYPICAL.

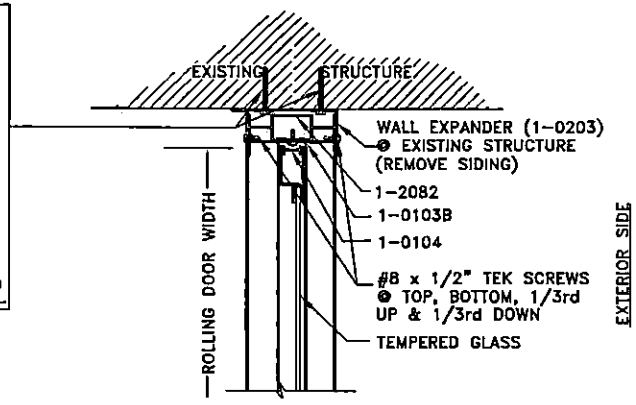
MOUNTING TO EXISTING STRUCTURES: REMOVE EXISTING SIDING AND ANY COMPRESSIBLE SHEATHING AT CONNECTION POINTS OF ENCLOSURE TO HOUSE. LAGS MUST BE SECURELY ANCHORED TO STRUCTURAL FRAMING OR INSTALL BLOCKING SECURELY FASTENED TO STRUCTURAL FRAMING TO PROVIDE MINIMUM 1-1/2" EMBEDMENT FOR MOUNTING FASTENERS.

13 PLAN VIEW OF FOAM WING PANEL AT EXISTING STRUCTURE

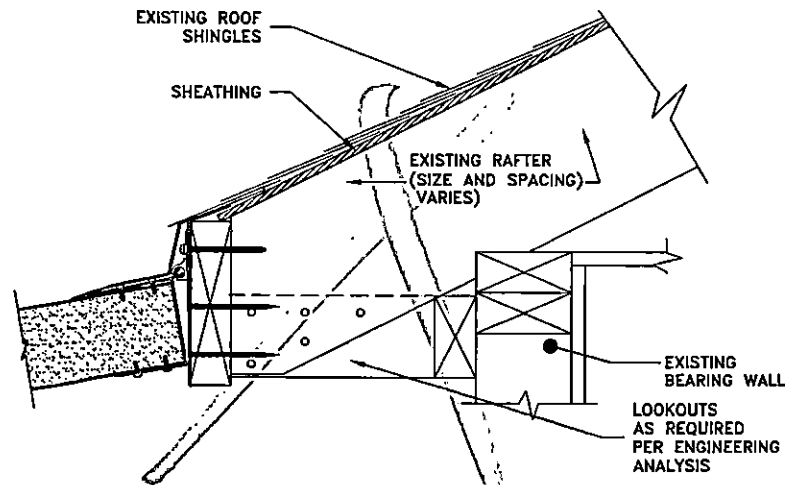
INSTALLATION NOTE: THE QUANTITY & SIZE OF FASTENERS REQUIRED VARIES BY APPLICATION. A LEDGER WITH MORE LAGS ADEQUATELY FASTENED TO THE EXISTING STRUCTURE, OR A SUPPORT BEAM MOUNTED ON SUPPORT POSTS AT THE FACE OF THE EXISTING STRUCTURE MAY BE REQUIRED UNDER HEAVY LOADS. CONSULT P.E.I. ENGINEERING OR A LOCAL DESIGN PROFESSIONAL FOR JOB SPECIFIC REQUIREMENTS.



15 TAB AND HANGER ASSEMBLY (WALL MOUNT)



14 PLAN VIEW OF ROLLING DOOR AT EXISTING STRUCTURE



NOTE: THIS MOUNTING METHOD MAY REQUIRE LOOKOUTS ADDED OR ADDITIONAL REINFORCEMENT AND/OR FASTENERS AT EACH RAFTER LOCATION. EXISTING STRUCTURE MUST BE EVALUATED FOR STRUCTURAL SUITABILITY BY LICENSED ENGINEER.

16 TAB AND HANGER ASSEMBLY (FASCIA MOUNT)

SUNROOM DETAILS

2012 0 8 8 33

PROFESSIONAL SEAL

023826

PAUL B. MANN, P.E.

NORTH CAROLINA

DRAWN BY: YNG
 DATE: 09-17-03
 SCALE: NTS
 VERSION: E:1(10/25/10)

patio ENCLOSURES, INC.
 AN EMPLOYEE OWNED COMPANY

720 E. HIGHLAND ROAD
 MACEDONIA, OHIO 44056

THE DRAWING IS THE PROPERTY OF PATIO ENCLOSURES, INC. ALL RIGHTS RESERVED. REPLICATION OF THIS DRAWING IN ANY FORM IS NOT PERMITTED WITHOUT THE EXPRESSED WRITTEN CONSENT OF PATIO ENCLOSURES, INC.

THE FASCIA PLAN, ELEVATIONS, SECTIONS & INSTALLATION PROCEDURES ESTABLISHED BY PATIO ENCLOSURES, INC. AND ARE FOR GENERAL REFERENCE. SEE INDIVIDUAL JOB SUBMITTAL FOR SPECIFIC PRODUCTIONS, UNIT WORKS & WALL HEIGHTS.

STANDARD RESIDENTIAL AVR DETAILS

SHEET 8 OF 11

SEE GENERAL NOTES ON SHEET 1 FOR REQUIREMENTS FOR PRESSURE TREATED LUMBER AND FASTENERS.

(2) -#10 x 2" TEK SCREWS THROUGH INTERIOR FACE OF FLOOR EXPANDER (1-2056) INTO RIDGE POST

3/8" DIAM. x 3-1/2" LONG GALVANIZED LAG WITH WASHER EACH SIDE OF RIDGE POST ON WOOD FOUNDATIONS
NOTE: LOCATE LAGS/BOLTS IN HOLE CLOSEST TO INTERIOR OF ROOM TYPICAL

PLYWOOD OR OSB DECK SURFACE
1-2056

TRUGRIP ANCHORS
• 18" O.C. TYP. STAGGERED

ALUM. FLASHING

4x4 POST WITH REQUIRED NOTCHING SHOWN. FOR 4x6 AND 6x6 POST, STOP FLOOR EXPANDER (1-2056) ON EACH SIDE OF RIDGE POST

NOTCH BOTTOM OF RIDGE POST TO CLEAR WEEP SHELF & FLOOR EXPANDER (1-2056) SIDEWALL (4x4 POST ONLY)

REMOVE INTERIOR LIP OF FLOOR EXPANDER (1-2056) AT POST LOCATION

3/8" DIAM. x 3" WEDGE-BOLT; TYP. EACH SIDE OF RIDGE POST ON CONCRETE FOUNDATION

2-1/2" ANGLE BRACKET (8-2108A) EACH SIDE OF RIDGE POST
FLOOR EXPANDER (1-2056) LIP FLUSH WITH EDGE OF CONCRETE ON CONCRETE FOUNDATION

(2) #10 x 2" TEK SCREWS THROUGH FLOOR EXPANDER (1-2056) INTO RIDGE POST

(4) -#10 x 2" LONG TEK SCREWS AT EACH BRACKET; TYP.
FLOOR EXPANDER (1-2056) LIP OVERHANGS WOOD HEADER BY 1/2" ON DECK FOUNDATIONS

ANCHORING NOTE:

FOR WOOD USE; MIN. (2) 3/8" DIAM. x 3-1/2" LONG GALVANIZED LAGS (MIN. 1-1/2" EMBEDMENT INTO STRUCTURAL FRAMING)

FOR CONCRETE USE; (2) 3/8" DIAM. x 3" WEDGE-BOLT

(3) #10 x 1-1/4" TEK SCREWS THROUGH WALL POST SUPPORT BRACKET (1-2053) INTO UTILITY POST (1-2092), TYPICAL AT EACH SIDE

(2) #8 x 1/2" TEK SCREWS

1-2092 W/ 2-1/2" x 2-1/2" x 3/16" STEEL TUBE (8-0091)

(LENGTH OF STEEL TUBE INSERT TO BE EXACTLY SAME AS AV UTILITY POST)

17A WOOD RIDGE POST ANCHORAGE

9

AT FLOOR EXPANDER

(BOTH WOOD DECK & CONCRETE FOUNDATION SHOWN)

(WOOD POST SHALL BE PRESSURE TREATED FOR CONCRETE FOUNDATION)

17B AV UTILITY POST/RIDGE POST ANCHORAGE

9

AT FLOOR EXPANDER

(CONCRETE FOUNDATION SHOWN)

WOOD RIDGE BEAM SIZE AND NUMBER OF MEMBERS AS SPECIFIED BY P.E.I. ENGINEERING

ALUMINUM FLASHING 1-0209 TYP. BOTH SIDES

MIN. 3/8" DIAM. x 2-1/2" LONG GALVANIZED LAG W/WASHERS INTO RIDGE BEAM, (SPACING AS SPECIFIED BY P.E.I. ENGINEERING)

ALUMINUM FLASHING AS REQUIRED

(2) #8 x 1/2" TEK SCREWS, AT TOP & BOTTOM OF EACH I-BEAM (1-0217B) CONNECTING PANELS; BOTH SIDES OF ROOF

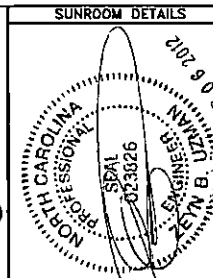
1-0210

3", 4-5/8" OR 6" ROOF PANEL (3" SHOWN)

ALUMINUM FLASHING AS REQUIRED

18 WOOD RIDGE BEAM WITH TAB AND HANGER

9

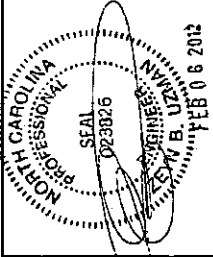


DRAWN BY: VNG
DATE: 08-17-03
SCALE: NTS
REVISION: E:1(02/25/10)

patio ENCLOSURES, INC.
AN EMPLOYEE OWNED COMPANY
720 E. HIGHLAND ROAD
MACEDONIA, OHIO 44056

THIS DRAWING IS THE PROPERTY OF PATIO ENCLOSURES, INC. ALL RIGHTS RESERVED. DUPLICATION OF THIS DRAWING IN ANY FORM IS NOT PERMITTED WITHOUT THE WRITTEN CONSENT OF PATIO ENCLOSURES, INC.
THE STANDARD PLANS, ELEVATIONS, SECTIONS & DETAILS CONTAINED HEREIN ARE IN ACCORDANCE WITH INSTALLATION PROCEDURES ESTABLISHED BY PATIO ENCLOSURES, INC. AS SET FORTH IN THE GENERAL SPECIFICATIONS, UNIT NOTES & WALL HEIGHT PROJECTIONS, UNIT NOTES & WALL HEIGHTS.

STANDARD RESIDENTIAL AVR DETAILS



DRAWN BY: VNG
 DATE: 09-17-03
 SCALE: NTS
 VERSION: D:1(07/09/07)

STANDARD RESIDENTIAL
 AVR DETAILS VALID FOR
 A PERIOD OF ONE YEAR
 FROM SIGNATURE DATE.

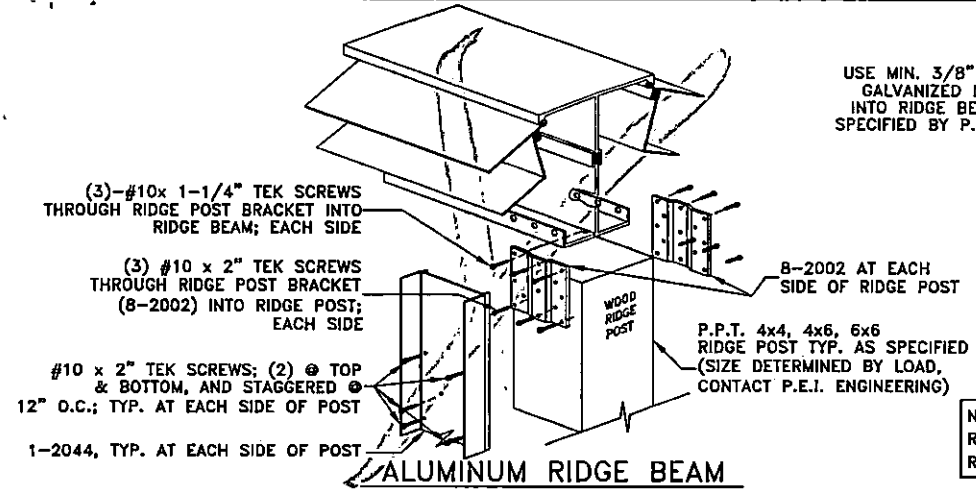
patio ENCLOSURES, INC.
 AN EMPLOYEE OWNED COMPANY

720 E. HIGHLAND ROAD
 MACEDONIA, OHIO 44056

THIS DRAWING IS THE PROPERTY OF PATIO ENCLOSURES, INC. ALL RIGHTS RESERVED. DUPLICATION OF THIS DRAWING IN ANY FORM IS NOT PERMITTED WITHOUT THE EXPRESSED WRITTEN CONSENT OF PATIO ENCLOSURES, INC.

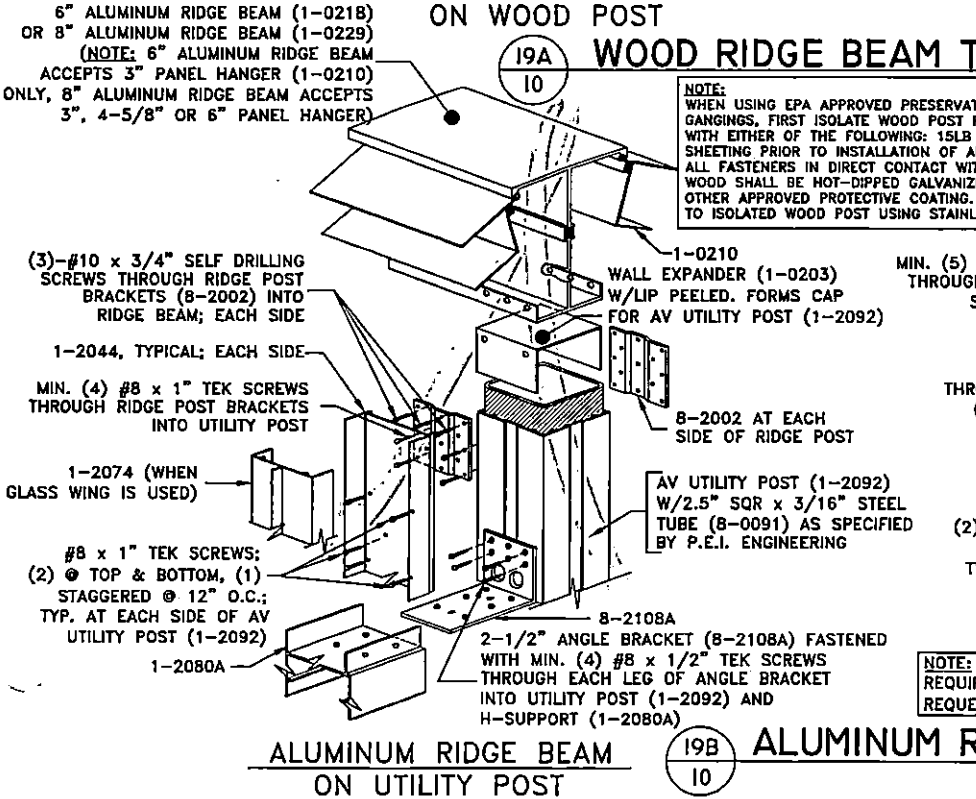
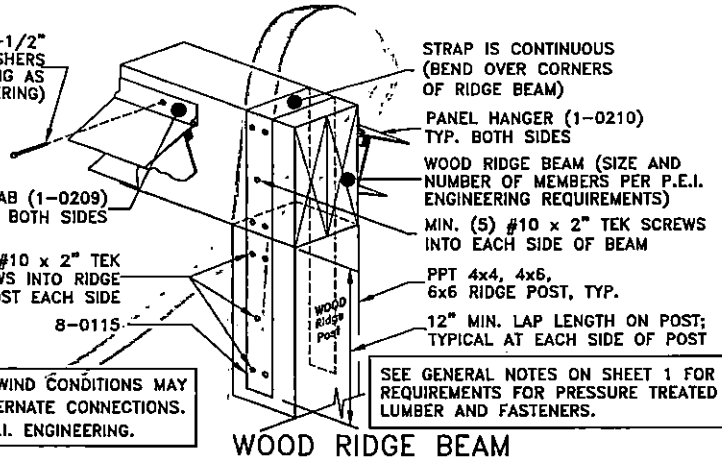
THE STANDARD PLANS, ELEVATIONS, SECTIONS & DETAILS CONTAINED HEREIN ARE IN ACCORDANCE WITH INSTALLATION PROCEDURES ESTABLISHED BY PATIO ENCLOSURES, INC. AND ARE FOR GENERAL REFERENCE. SEE INDIVIDUAL JOB SUBMITTAL FOR SPECIFIC PROTECTIONS, UNIT WINDOWS & WALL HEIGHTS.

STANDARD RESIDENTIAL AVR DETAILS



USE MIN. 3/8" DIAM. x 2-1/2" GALVANIZED LAGS W/WASHERS INTO RIDGE BEAM; (SPACING AS SPECIFIED BY P.E.I. ENGINEERING)

NOTE: HIGH WIND CONDITIONS MAY REQUIRE ALTERNATE CONNECTIONS. REQUEST P.E.I. ENGINEERING.



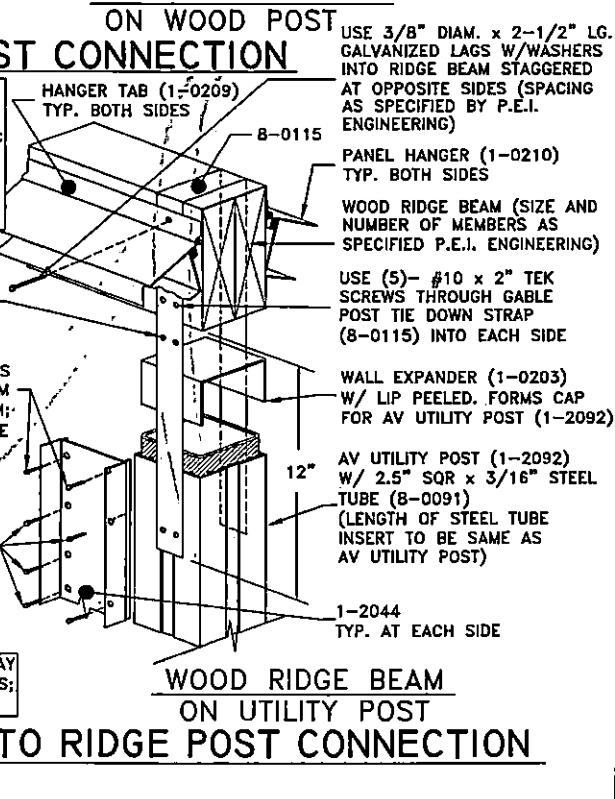
NOTE: WHEN USING EPA APPROVED PRESERVATIVE TREATED LUMBER AT GANGINGS, FIRST ISOLATE WOOD POST FROM ALUMINUM BY WRAPPING WITH EITHER OF THE FOLLOWING: 15LB ROOF FELT, OR 10 MIL PLASTIC SHEETING PRIOR TO INSTALLATION OF ALUMINUM CLIPS OR TRIM COIL. ALL FASTENERS IN DIRECT CONTACT WITH PRESERVATIVE TREATED WOOD SHALL BE HOT-DIPPED GALVANIZED PER ASTM A153, OR OTHER APPROVED PROTECTIVE COATING. TRIM COIL TO BE ATTACHED TO ISOLATED WOOD POST USING STAINLESS STEEL TRIM NAILS.

MIN. (5) #8 x 1/2" TEK SCREWS THROUGH GABLE POST TIE DOWN STRAP (8-0115) INTO AV UTILITY POST (1-2092); EACH SIDE

(2) #10 x 2" TEK SCREWS THROUGH FOAM KNEEWALL TRIM (1-2044) INTO RIDGE BEAM; EACH SIDE

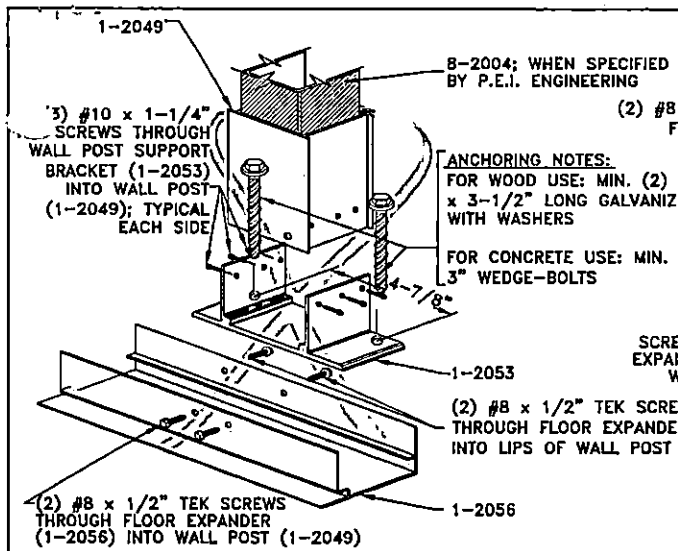
#8 x 1" TEK SCREWS: (2) top & bottom, (1) staggered 12" O.C.; TYP. AT EACH SIDE OF AV UTILITY POST (1-2092)

NOTE: HIGH WIND CONDITIONS MAY REQUIRE ALTERNATE CONNECTIONS; REQUEST P.E.I. ENGINEERING

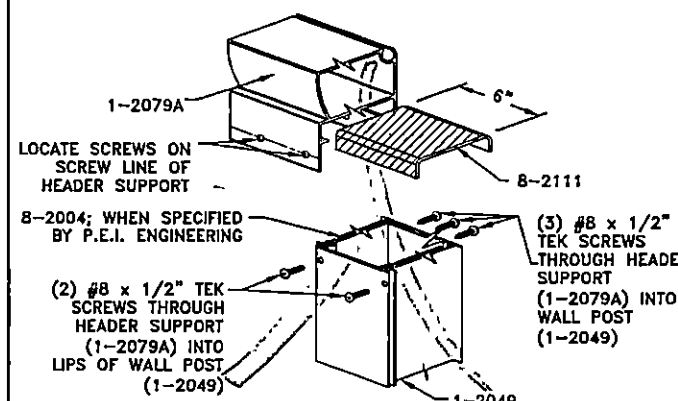


WOOD RIDGE BEAM ON UTILITY POST

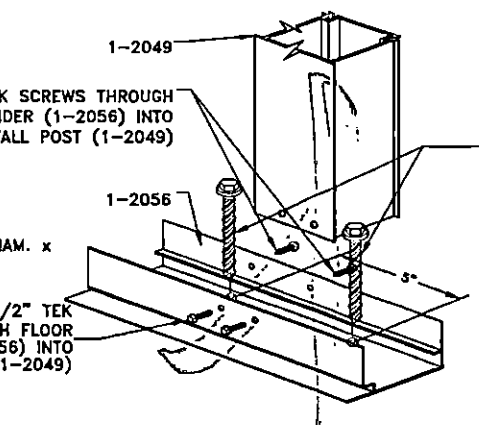
ALUMINUM RIDGE BEAM TO RIDGE POST CONNECTION



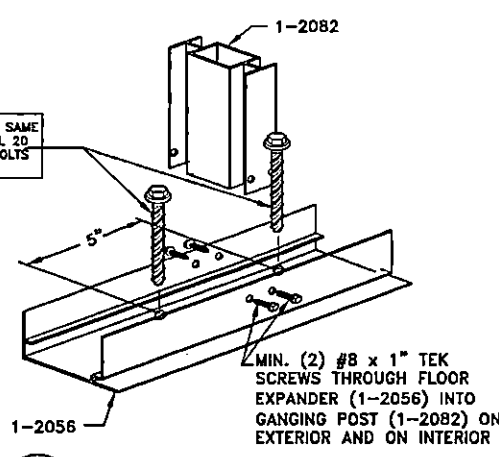
20 WALL POST CONNECTION, AT BEARING WALL



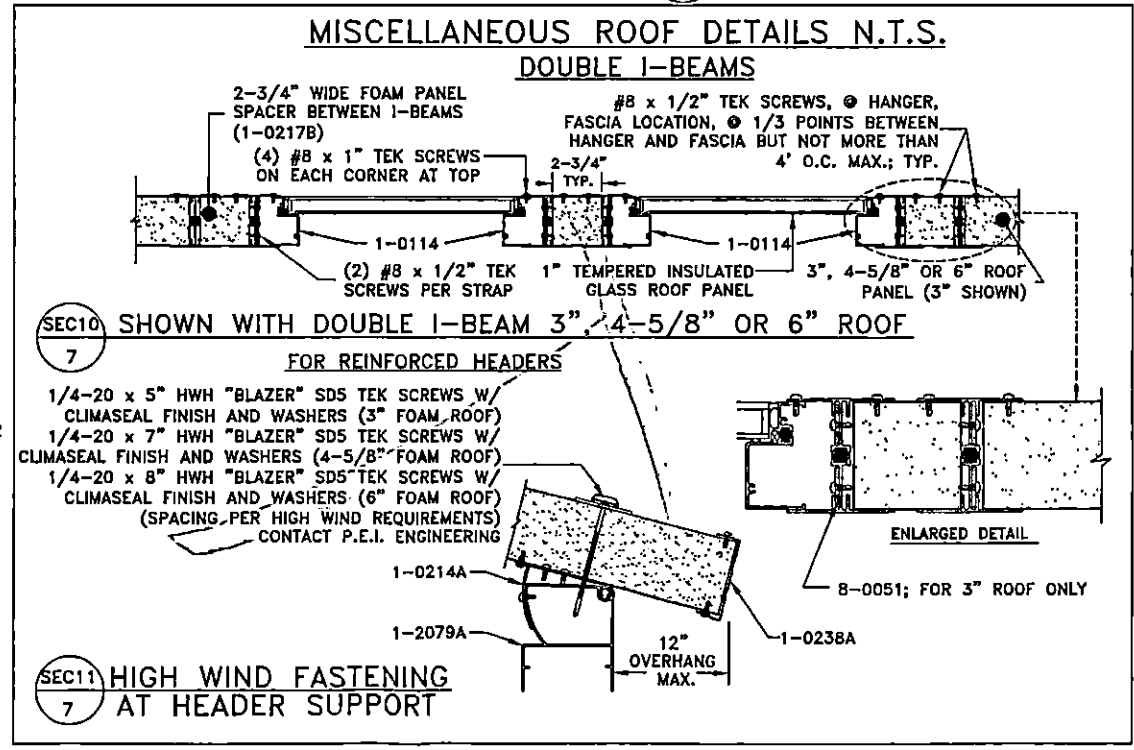
21 HEADER SUPPORT TO WALL POST CONNECTION AT BEARING WALL



22 WALL POST CONNECTION AT NON-BEARING WALL



23 GANGING POST CONNECTION AT NON-BEARING WALL



SEC10 SHOWN WITH DOUBLE I-BEAM 3", 4-5/8" OR 6" ROOF FOR REINFORCED HEADERS

1/4-20 x 5" HWH "BLAZER" SD5 TEK SCREWS W/ CLIMASEAL FINISH AND WASHERS (3" FOAM ROOF)
1/4-20 x 7" HWH "BLAZER" SD5 TEK SCREWS W/ CLIMASEAL FINISH AND WASHERS (4-5/8" FOAM ROOF)
1/4-20 x 8" HWH "BLAZER" SD5 TEK SCREWS W/ CLIMASEAL FINISH AND WASHERS (6" FOAM ROOF) (SPACING PER HIGH WIND REQUIREMENTS)

SEC11 HIGH WIND FASTENING AT HEADER SUPPORT

FEB 06 2017
NORTH CAROLINA PROFESSIONAL SEAL
023826
KEVIN B. BRIDGES

DRAWN BY: VANG
DATE: 09-17-03
SCALE: N.T.S.
VERSION: D.1(12/21/07)

STANDARD RESIDENTIAL AVR DETAILS VALID FOR A PERIOD OF ONE YEAR FROM SIGNATURE DATE.

Patio ENCLOSURES, INC.
AN EMPLOYEE-OWNED COMPANY
720 E. HIGHLAND ROAD
MACEDONIA, OHIO 44056

THIS DRAWING IS THE PROPERTY OF PATIO ENCLOSURES, INC. ALL RIGHTS RESERVED. DUPLICATION OF THIS DRAWING IN ANY FORM IS NOT PERMITTED WITHOUT THE EXPRESSED WRITTEN CONSENT OF PATIO ENCLOSURES, INC.

THE STIPULATED PLANS, ELEVATIONS, SECTIONS & DETAILS CONTAINED HEREIN ARE IN ACCORDANCE WITH INSTALLATION PROCEDURES ESTABLISHED BY PATIO ENCLOSURES, INC. AND ARE FOR GENERAL REFERENCE. SEE MANUAL FOR SPECIFIC PRECAUTIONS, UNIT WIDTHS & WALL HEIGHTS.

STANDARD RESIDENTIAL AVR DETAILS