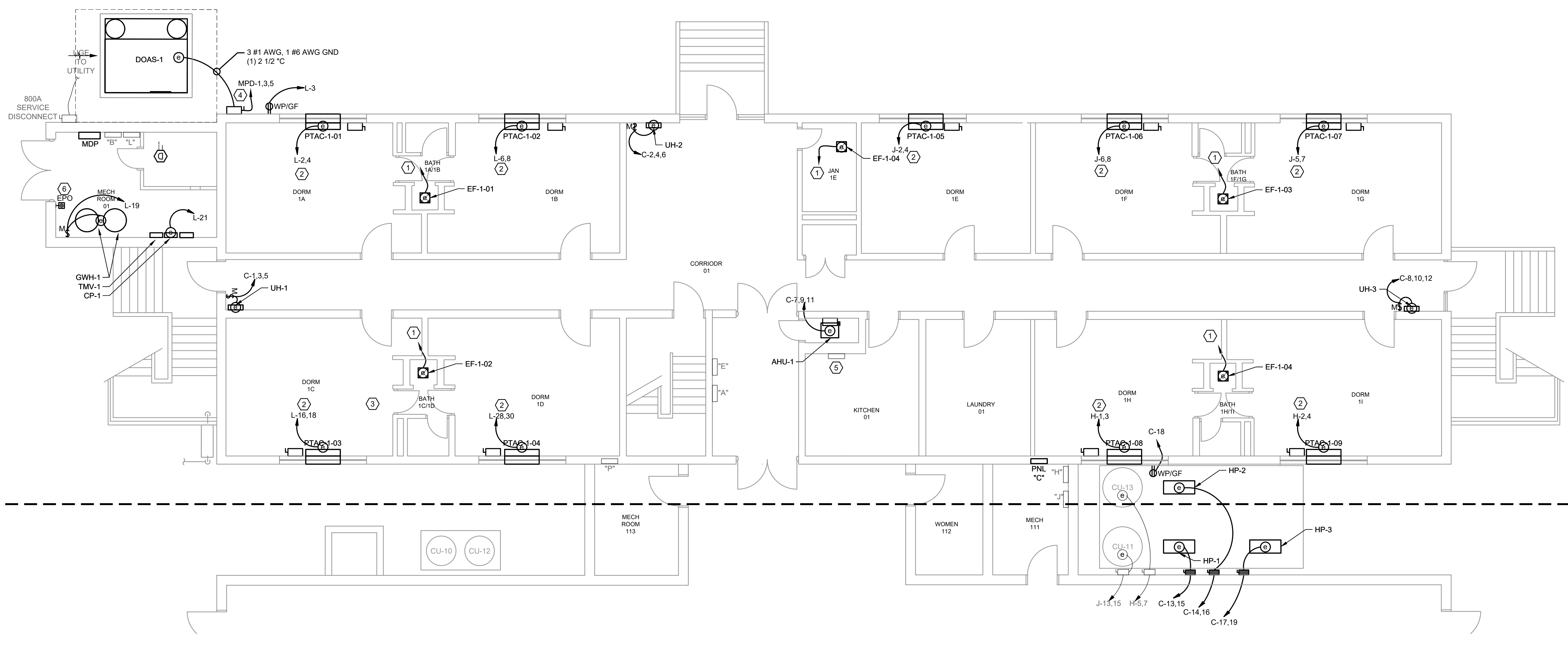
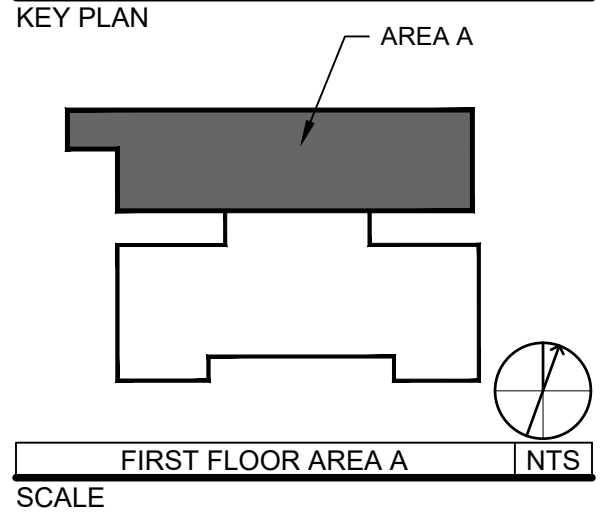
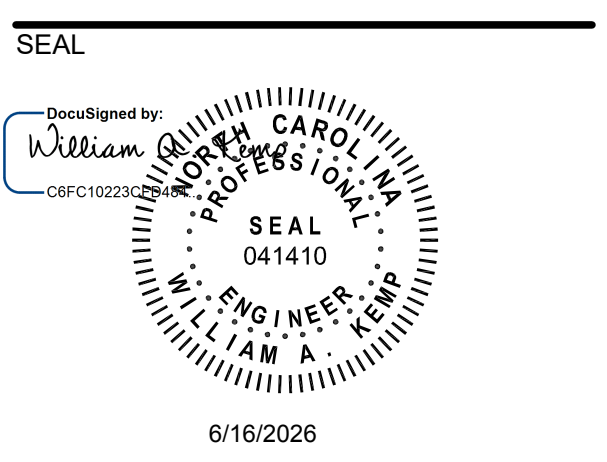




CAMPBELL UNIVERSITY
POWELL HALL
HVAC AND PLUMBING RENOVATION
84 DAY DORM ROAD
BUJES CREEK, NC 27506
CONSTRUCTION DOCUMENTS



1 FIRST FLOOR ELECTRICAL NEW WORK PLAN AREA A
SCALE: 3/16" = 1'-0"
0' 2' 4' 8'



REVISIONS

NO.	DESCRIPTION	DATE
1	DOAS RELOCATION	6/11/26

GENERAL NOTES:

- REFER TO SHEET E-001 FOR ELECTRICAL NOTES, SYMBOLS AND ABBREVIATIONS.

- KEYNOTES:**
- FAN PROVIDED WITH AN INTEGRAL LIGHT. BOTH OPERATE FROM EXISTING FAN WALL SWITCH. RECONNECT TO EXISTING FAN CIRCUIT.
 - PTAC INCLUDES INTEGRAL DISCONNECT IN BASE. NEATLY INSTALL EXPOSED CONDUIT ALONG WALL TO DISCONNECT WITH BENDS NOT BOXES. CONTRACTOR TO PAINT EXPOSED CONDUIT (TYP EACH PTAC).
 - PROVIDE DOAS DUCT DETECTOR IN CRAWL SPACE. REFER TO MECHANICAL PLAN. MECHANICAL CONTROLS TO SHUTDOWN DOAS. CONNECT TO EXISTING FIRE ALARM SYSTEM FOR SUPERVISORY ALARM. PROVIDE UPDATED NFPA 72 RECORD OF COMPLETION FOR ENGINEER REVIEW.
 - PROVIDE 3P-200A FUSED DISCONNECT, NEMA 3R FUSED AT 125A.
 - CRAWL SPACE PANEL (BELOW).
 - ELECTRICAL CONTRACTOR TO INSTALL AND WIRE A 120V EPO SWITCH FOR PLUMBING EQUIPMENT. FURNISHED BY PLUMBING CONTRACTOR, COORDINATE LOCATION WITH PLUMBING.

DRAWN BY BRS, KMS
APPROVED BY WAK
CHECKED BY POA
DATE 05/20/2026

TITLE
FIRST FLOOR ELECTRICAL NEW WORK PLAN AREA A

PROJECT NO. 50193045

E-111

SHEET NO.

6/16/2026 4:07:37 AM P:\0193045\CAD\ELECTRICAL\50193045 E-111 FIRST FLOOR ELECTRICAL NEW WORK PLAN AREA A.DWG

EXISTING PANEL L				BRANCH: NORMAL				NEW WORK					
CKT	LOAD VA	DESCRIPTION	CIRCUIT BREAKER			PHASE			CIRCUIT BREAKER			LOAD VA	CKT
			NOTE	FUNCTION	TRIP	A	B	TRIP	FUNCTION	NOTE	DESCRIPTION		
1	0	EXHAUST FAN MAIN PANEL ROOM		EX	20	2500		2680	30		2	PTAC-1-01 (2 #10 AWG + 1 #10GND, 3/4")	2500 2
3	180	DOAS YARD REC			20								2500 4
5	0	SPARE		EX	20	2500			30		2	PTAC-1-02 (2 #10 AWG + 1 #10GND, 3/4")	2500 6
7	0	SPARE	3		20			2500					2500 8
9	0	SPARE			20				20			ROOF FAN	0 10
11	0	FIRE ALARM AND HVAC POWER SUPPLY		EX	20		0	20				ROOF FAN	0 12
13	0	A/H 2ND FLOOR			20	0		20				C-PUMP	0 14
15	0	EXT LIGHTS JONES SIDE		EX	20		2500		30		2	PTAC-1-03 (2 #10 AWG + 1 #10GND, 3/4")	2500 16
17	0	ENERGY MAN		EX	20	2500			30				2500 18
19	750	GWH-1	2		20		750	20	EX			ENERGY MAN. 3RD FLOOR	0 20
21	180	CP-1	2		20	180			20	EX		SPARE	0 22
23	0	SPACE					0	20				SPARE	0 24
25	0	METYSIS SYSTEM		EX	20	0		20				SPARE	0 26
27	0	SPACE	3		20		2500	2500	30	1	PTAC-1-04 (2 #10 AWG + 1 #10GND, 3/4")	2500 28	
29	0	SPACE			20							SPACE	2500 30
31	0	SPACE		EX	20		0					SPACE	0 32
33	0	SPACE				0						SPACE	0 34
35	0	SPACE				0						SPACE	0 36
37	0	SPACE				0						SPACE	0 38
39	0	SPACE				0						SPACE	0 40
41	0	SPACE				0						SPACE	0 42

EXISTING PANEL H				BRANCH: NORMAL				NEW WORK					
CKT	LOAD VA	DESCRIPTION	CIRCUIT BREAKER			PHASE			CIRCUIT BREAKER			LOAD VA	CKT
			NOTE	FUNCTION	TRIP	A	B	TRIP	FUNCTION	NOTE	DESCRIPTION		
1	2500	PTAC-1-08 (2 #10 AWG + 1 #10GND, 3/4")	2		40	5000		5000	40		2	PTAC-1-09 (2 #10 AWG + 1 #10GND, 3/4")	2500 2
3	2500												2500 4
5	0	A/C #13 - LITE LINE		EX	40				40		3	SPARE	0 6
7	0	SPACE											0 8
9	0	SPACE											0 10
11	0	SPACE											0 12
13	0	SPACE											0 14
15	0	SPACE		EX	20		0	20	EX				0 16
17	0	SPACE		EX	20	0		20	EX				0 18
19	0	SPACE		EX	20	0		20	EX				0 20
21	0	SPACE				0							0 22
23	0	SPACE				0							0 24
25	0	SPACE				0							0 26
27	0	SPACE				0							0 28
29	0	SPACE				0							0 30
31	0	SPACE				0							0 32
33	0	SPACE				0							0 34
35	0	SPACE				0							0 36
37	0	SPACE				0							0 38
39	0	SPACE				0							0 40
41	0	SPACE				0							0 42

NEW PANEL D				BRANCH: NORMAL				NEW WORK					
CKT	LOAD VA	DESCRIPTION	CIRCUIT BREAKER			PHASE			CIRCUIT BREAKER			LOAD VA	CKT
			NOTE	FUNCTION	TRIP	A	B	C	TRIP	FUNCTION	NOTE		
1	2500	PTAC-2-01 (2 #10 + 1 #10 GND, 3/4")				30	5000			30		PTAC-2-02 (2 #10 + 1 #10 GND, 3/4")	2500 2
3	2500						5000						2500 4
5	2500	PTAC-2-03 (2 #10 + 1 #10 GND, 3/4")				30		5000		30		PTAC-2-04 (2 #10 + 1 #10 GND, 3/4")	2500 6
7	2500						5000						2500 8
9	2500	PTAC-2-05 (2 #10 + 1 #10 GND, 3/4")				30		5000		30		PTAC-2-06 (2 #10 + 1 #10 GND, 3/4")	2500 10
11	2500							5000					2500 12
13	2500	PTAC-2-07 (2 #10 + 1 #10 GND, 3/4")				30		5000		30		PTAC-2-08 (2 #10 + 1 #10 GND, 3/4")	2500 14
15	2500							5000					2500 16
17	2500	PTAC-2-09 (2 #10 + 1 #10 GND, 3/4")				30		5000		30		PTAC-2-10 (2 #10 + 1 #10 GND, 3/4")	2500 18
19	2500							5000					2500 20
21	2500	PTAC-2-11 (2 #10 + 1 #10 GND, 3/4")				30		3500		20		FCU-2 (3 #12 + 1 #12 GND, 3/4")	1000 22
23	2500							3500					1000 24
25	0	SPACE					1000						1000 26
27	0	SPACE						0				SPACE	0 28
29	0	SPACE						0				SPACE	0 30
31	0	SPACE					0					SPACE	0 32
33	0	SPACE						0				SPACE	0 34
35	0	SPACE						0				SPACE	0 36
37	0	SPACE						0				SPACE	0 38
39	0	SPACE						0				SPACE	0 40
41	0	SPACE						0				SPACE	0 42

NEW PANEL F				BRANCH: NORMAL				NEW WORK					
CKT	LOAD VA	DESCRIPTION	CIRCUIT BREAKER			PHASE			CIRCUIT BREAKER			LOAD VA	CKT
			NOTE	FUNCTION	TRIP	A	B	C	TRIP	FUNCTION	NOTE		
1	2500	PTAC-3-01 (2 #10 + 1 #10 GND, 3/4")			30	5000			30			PTAC-3-02 (2 #10 + 1 #10 GND, 3/4")	2500 2
3	2500						5000						2500 4
5	2500	PTAC-3-03 (2 #10 + 1 #10 GND, 3/4")			30			5000		30		PTAC-3-04 (2 #10 + 1 #10 GND, 3/4")	2500 6
7	2500						5000						2500 8
9	2500	PTAC-3-05 (2 #10 + 1 #10 GND, 3/4")			30			5000		30		PTAC-3-06 (2 #10 + 1 #10 GND, 3/4")	2500 10
11	2500							5000					2500 12
13	2500	PTAC-3-07 (2 #10 + 1 #10 GND, 3/4")			30			5000		30		PTAC-3-08 (2 #10 + 1 #10 GND, 3/4")	2500 14
15	2500							5000					2500 16
17	2500	PTAC-3-09 (2 #10 + 1 #10 GND, 3/4")			30			5000		30		PTAC-3-10 (2 #10 + 1 #10 GND, 3/4")	2500 18
19	2500							5000					2500 20
21	2500	PTAC-3-11 (2 #10 + 1 #10 GND, 3/4")			30			3500		20		FCU-3 (3 #12 + 1 #12 GND, 3/4")	1000 22
23	2500							3500					1000 24
25	0	SPACE				1000							1000 26
27	0	SPACE					0					SPACE	0 28
29	0	SPACE						0				SPACE	0 30
31	0	SPACE						0				SPACE	0 32
33	0	SPACE				0						SPACE	0 34
35	0	SPACE				0						SPACE	0 36
37	0	SPACE				0						SPACE	0 38
39	0	SPACE				0						SPACE	0 40
41	0	SPACE				0						SPACE	0 42

NEW PANEL C				BRANCH: NORMAL				NEW WORK					
CKT	LOAD VA	DESCRIPTION	CIRCUIT BREAKER			PHASE			CIRCUIT BREAKER			LOAD VA	CKT
			NOTE	FUNCTION	TRIP	A	B	C	TRIP	FUNCTION	NOTE		
1	1000					20	2000			20		UNIT HEATER 1 (3 #12 + 1 #12 GND, 3/4")	1000 2
3	1000	UNIT HEATER 1 (3 #12 + 1 #12 GND, 3/4")					2000			20		UNIT HEATER 2 (3 #12 + 1 #12 GND, 3/4")	1000 4
5	1000							2000					1000 6
7	1000						2000						1000 8
9	1000	FCU-1 (3 #12 + 1 #12 GND, 3/4")				20		2000		20		UNIT HEATER 3 (3 #12 + 1 #12 GND, 3/4")	1000 10
11	1000							2000					1000 12
13	2306	CU-1 (2 #10 + 1 #10 GND, 3/4")				30	4612			30		CU-2 (2 #10 + 1 #10 GND, 3/4")	2306 14
15	2306							4612					2306 16
17	2306	CU-3 (2 #10 + 1 #10 GND, 3/4")				30		2306				SPACE	0 18
19	2306							2306				SPACE	0 20
21	0	SPACE					0					SPACE	0 22
23	0	SPACE						0				SPACE	0 24
25	0	SPACE						0				SPACE	0 26
27	0	SPACE						0				SPACE	0 28
29	0	SPACE						0				SPACE	0 30
31	0	SPACE						0				SPACE	0 32
33	0	SPACE						0				SPACE	0 34
35	0	SPACE						0				SPACE	0 36
37	0	SPACE						0				SPACE	0 38
39	0	SPACE						0				SPACE	0 40
41	0	SPACE						0				SPACE	0 42

NEW PANEL E				BRANCH: NORMAL				NEW WORK					
CKT	LOAD VA	DESCRIPTION	CIRCUIT BREAKER			PHASE			CIRCUIT BREAKER			LOAD VA	CKT
			NOTE	FUNCTION	TRIP	A	B	C	TRIP	FUNCTION	NOTE		
1	2500	PTAC-1-05 (2 #10 AWG + 1 #10GND, 3/4")			20	2500		2500	60		2	PTAC-1-05 (2 #10 AWG + 1 #10GND, 3/4")	2500 2
3	0	SPARE		EX	15				20	EX			2500 4
5	2500	PTAC-1-07 (2 #10 AWG + 1 #10GND, 3/4")	2		40	5000			40		2	PTAC-1-06 (2 #10 AWG + 1 #10GND, 3/4")	2500 6
7	2500							5000					2500 8
9	0	NIGHT LIGHTS		EX	20	0			20	EX		RECEPTACLES/BATHROOMS	0 10
11	0	LIGHTS		EX	20	0		0	30		3	SPARE	0 12
13	0	A/C FAN #11		EX	20	0			0				0 14
15	0	RECEPTACLES/BATHROOMS		EX	30	0		0	40		3	SPARE	0 16
17	0	RECEPTACLES/BATHROOMS		EX	30	0		0	40				0 18
19	0	A/C #13 FAN			20	0		0	40	EX		BASE BOARD RECEPT	0 20
21	0	SPARE	S	EX	30	0			40				0 22
23	0	SPACE				0		0	20	EX		OUTSIDE RECEPTACLES	0 24