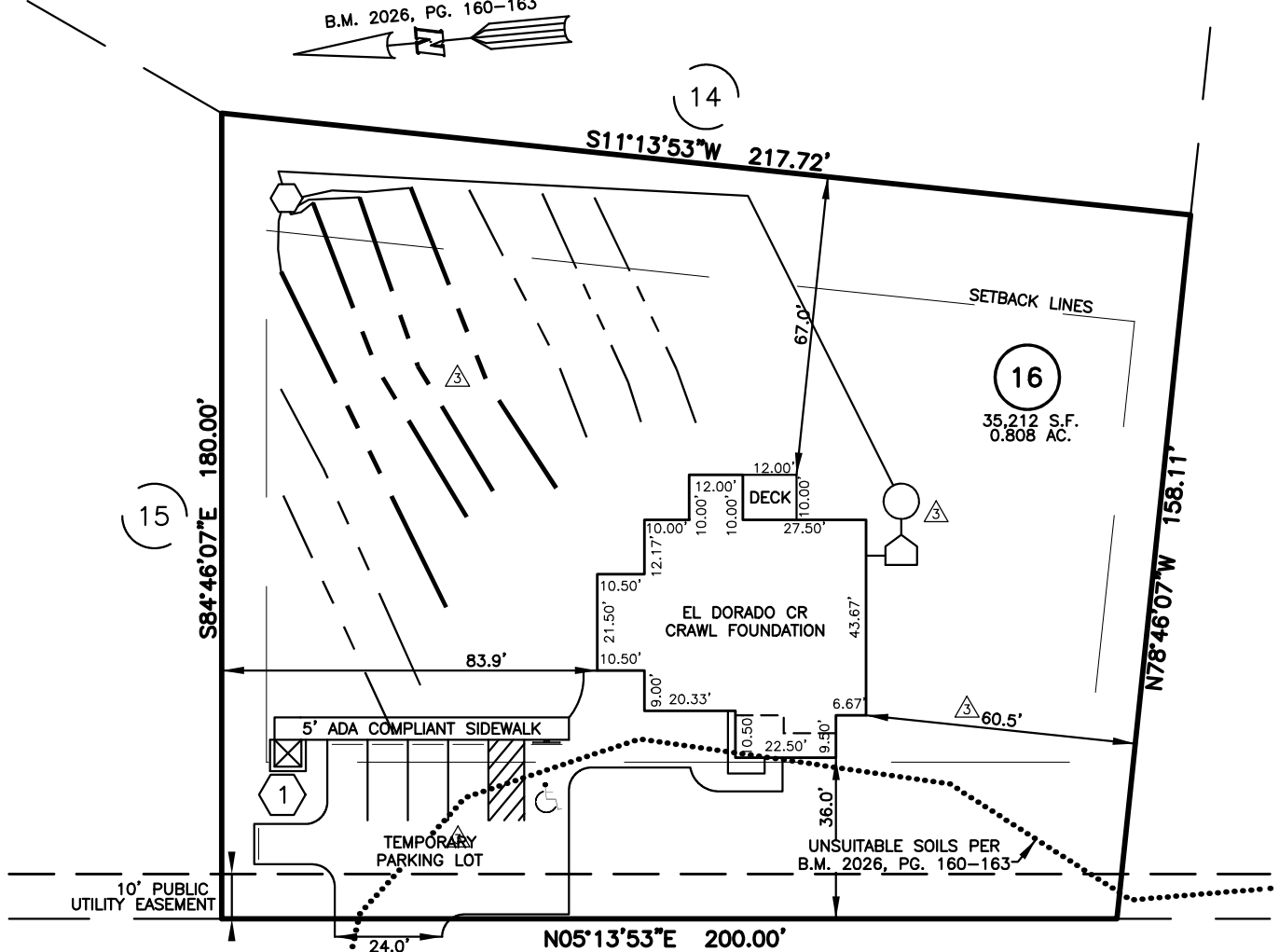


SITE PLAN FOR
MATTAMY HOMES
 55 MADISON GROVE LANE
 LOT 16, MADISON PARK
 UPPER LITTLE RIVER TOWNSHIP, HARNETT COUNTY, NORTH CAROLINA

B.M. 2026, PG. 160-163



MADISON GROVE LANE
 50' PUBLIC R/W & UTILITY EASEMENT

LEGEND

- | | |
|--------------------------------|--------------------------|
| △ AIR CONDITIONER | INV. INVERT |
| BC BACK OF CURB | IPS IRON PIPE SET |
| BFP BACK FLOW PREVENTER | IRS IRON ROD SET |
| ○ CLEANOUT | ○ LIGHT POLE |
| ■ CURB INLET | MNS MAGNETIC NAIL SET |
| DHS DRILL HOLE SET | ○ MANHOLE SANITARY SEWER |
| ECM EXISTING CONCRETE MONUMENT | ○ MANHOLE STORM SEWER |
| EDH EXISTING DRILL HOLE | OHW OVERHEAD WIRES |
| EIS EXISTING IRON STAKE | PKS PK NAIL SET |
| EIP EXISTING IRON PIPE | PNS POINT NOT SET |
| EM ELECTRIC METER | RRS RAIL ROAD SPIKE |
| EPK EXISTING PK NAIL | ○ TELEPHONE PEDESTAL |
| ES ELECTRIC STUB | ○ TRANSFORMER |
| FLARED END SECTION | ○ CABLE TV PEDESTAL |
| ○ FIRE HYDRANT | ○ UTILITY POLE |
| ○ FIBER OPTIC PEDESTAL | ○ WATER METER |
| GM GAS METER | ○ WATER VALVE |
| → GUY | ○ YARD INLET |
| ○ TANK | △ FIELD MEASUREMENT |
| ○ MANIFOLD | △ REVISION TRIANGLE |
| ○ PUMP TANK | --- INITIAL DRAINFIELD |
| | --- REPAIR DRAINFIELD |

IMPERVIOUS SURFACES	S.F.
HOUSE	2,700
WALK & DRIVE	560
ADA PARKING LOT	2,760
TOTAL	6,020
MAX. IMPERVIOUS	7,841

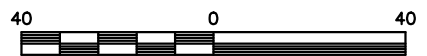
SETBACK INFO

FRONT: 35'
 REAR: 25'
 SIDES: 10'
 CORNER SIDE: 20'

1 ADA COMPLIANT TOILET
 W/PRIVACY FENCE

REFERENCES:

B.M. 2026, PG. 160-163



SCALE: 1" = 40'

NOTES

- PROPOSED SEPTIC LAYOUT AND HOUSE PLACEMENT AS PER MADISON PARK PRELIMINARY LAYOUTS(1).PDF PROVIDED BY MATTAMY HOMES, RECEIVED ON 04-20-2026.

THIS IS A SITE PLAN AS DEFINED BY G.S. 160D-102 AND IS NOT INTENDED TO BE ATTACHED TO ANY INSTRUMENT RECORDED IN THE REGISTER OF DEEDS OFFICE

△ PARKING, HOUSE & SEPTIC

SITE PLAN
 NOT FOR RECORDATION,
 CONVEYANCE OR SALES

REV CODE: 1.FLIP, 2.PLAN, 3.ROTATE, 4.MOVE, 5.SS
 6.SEVERAL OF ABOVE, 7.LAND FEATURE, 8. OTHER

REV 3: APR. 27, 2026
 DATE: APR. 10, 2026

F.B. _____

RWK, PA

ENGINEERING ~ SURVEYING

CORPORATE LICENSE: C-1771
 101 W. MAIN ST., SUITE 202
 GARNER, NC 27529
 PHONE (919) 779-4854
 FAX (919) 779-4056