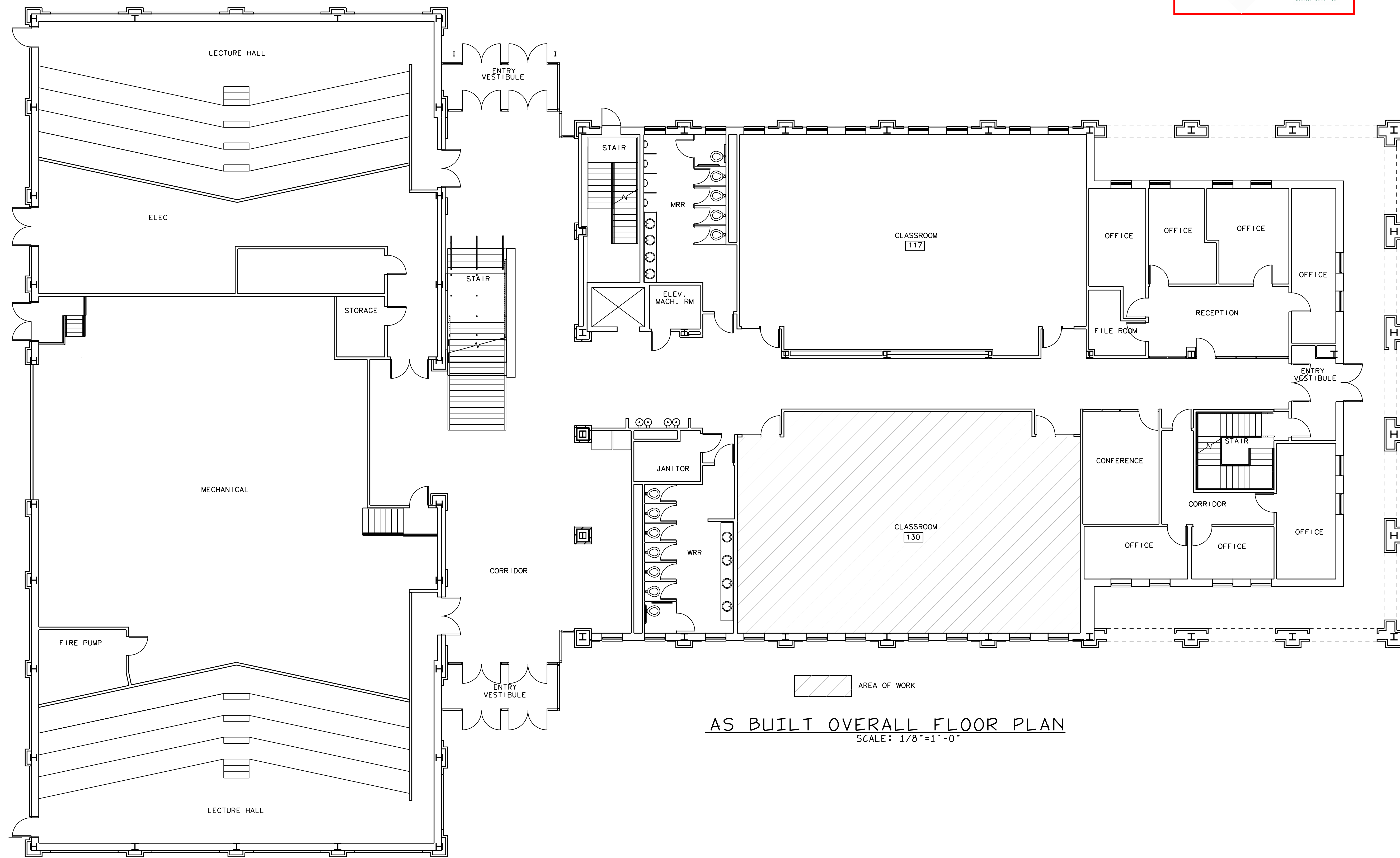


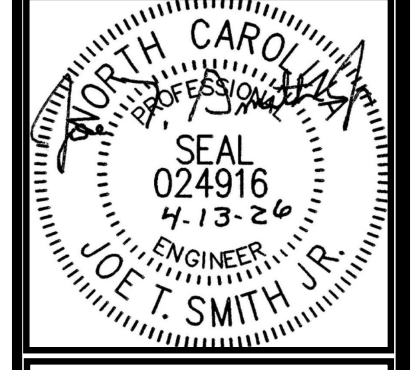
NOTICE TO CONTRACTOR  
 All work shall comply with current NC Building Codes  
 and is subject to field inspection and approval.  
 Request for Code  
 Compliance  
 04/24/2026  
 Harnett  
 COUNTY  
 NORTH CAROLINA



AS BUILT OVERALL FLOOR PLAN  
 SCALE: 1/8"=1'-0"

Smith Engineering  
 and Design, P.A.  
 1103 Gracie Place - Suite A  
 Goldsboro, N.C. 27534  
 Phone: 919.736.2141  
 Fax: 919.736.2142  
 Corporate license # C-2241

This drawing is the property  
 of Smith Engineering & Design  
 and may not be used or copied  
 without SE&D's permission.



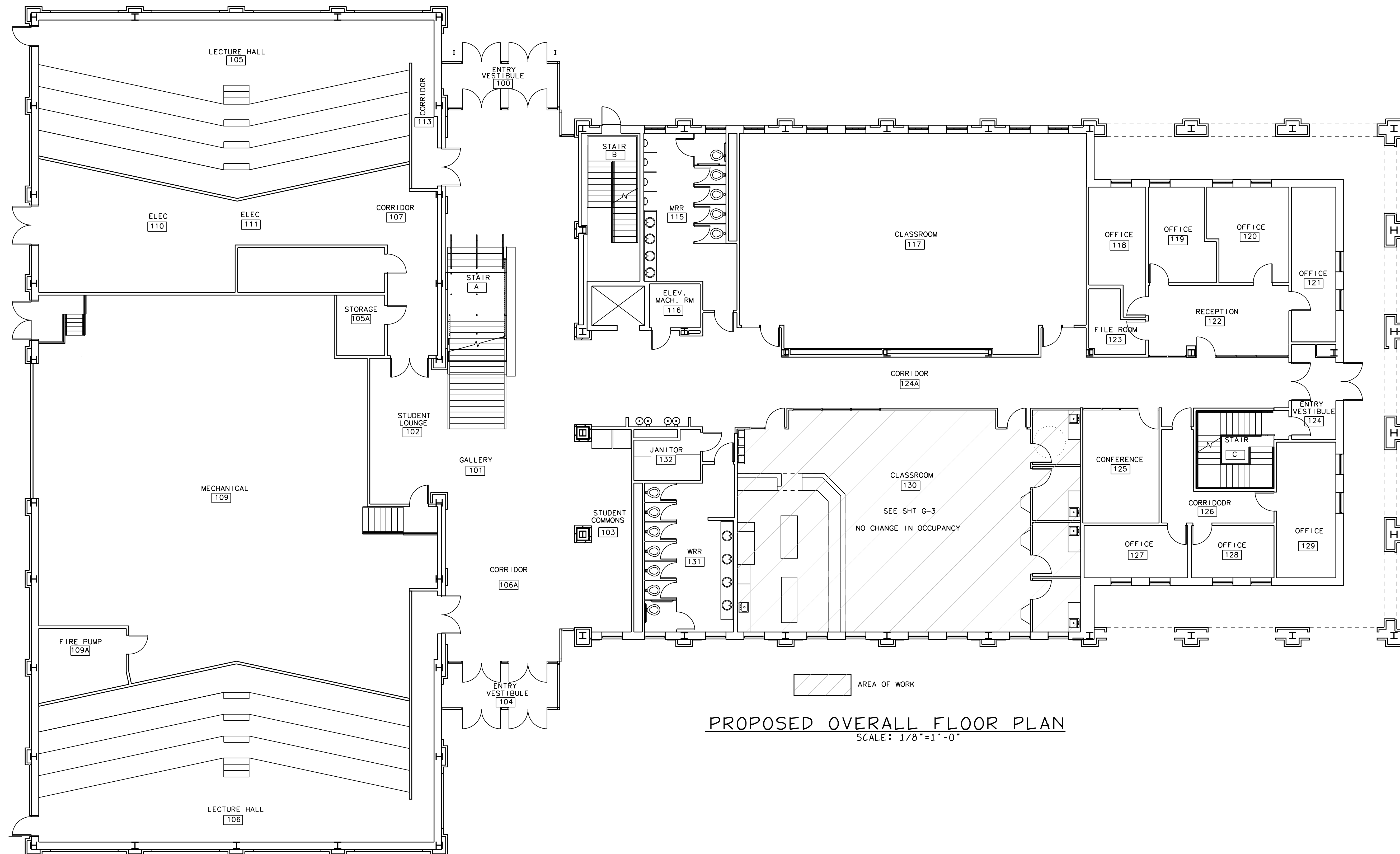
REVISIONS

PHARMACY CLASSROOM  
 CAMPBELL UNIVERSITY  
 BOUIES CREEK, N.C.  
 COPYRIGHT 2026 © SMITH ENGINEERING AND DESIGN, P.A. - ALL RIGHTS RESERVED

JOB #26005  
 DRAWN BY: JL  
 DATE: 04/13/2026

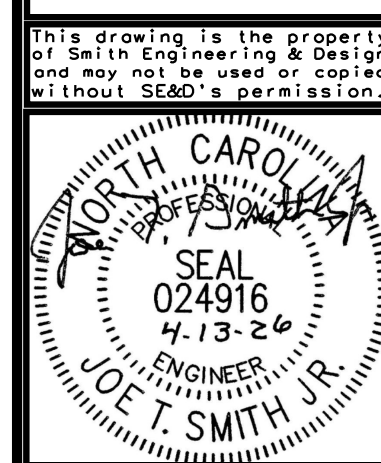
AS BUILT  
 OVERALL  
 FLOOR PLAN

G-1



PROPOSED OVERALL FLOOR PLAN  
SCALE: 1/8"=1'-0"

Smith Engineering  
and Design, P.A.  
1103 Gracie Place - Suite A  
Goldsboro, N.C. 27534  
Phone: 919.736.2141  
Fax: 919.736.2142  
Corporate license # C-2241



REVISIONS

NO.	DESCRIPTION

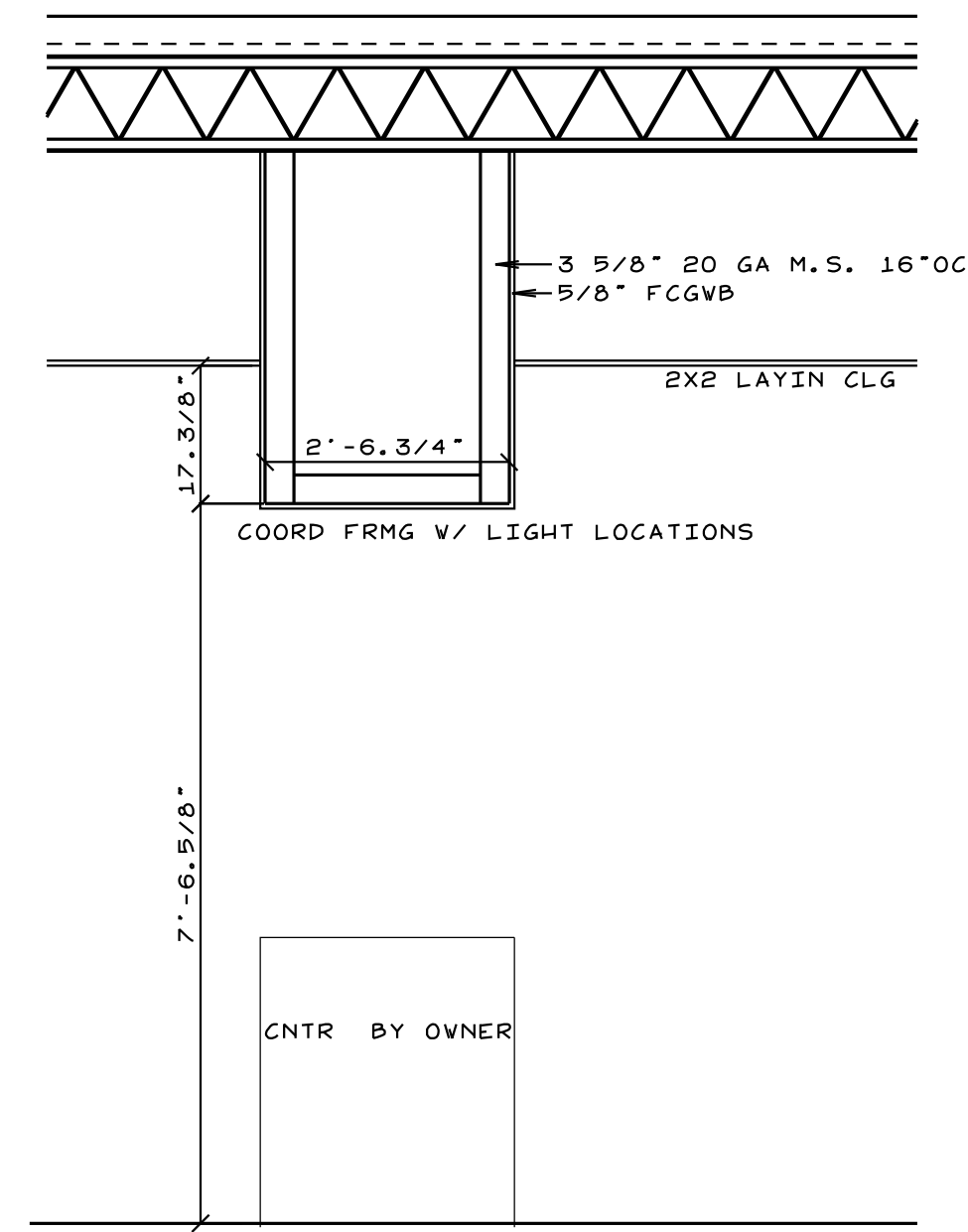
PHARMACY CLASSROOM  
CAMPBELL UNIVERSITY  
BOUIES CREEK, N.C.

JOB #26005  
DRAWN BY: JL  
DATE: 04/13/2026

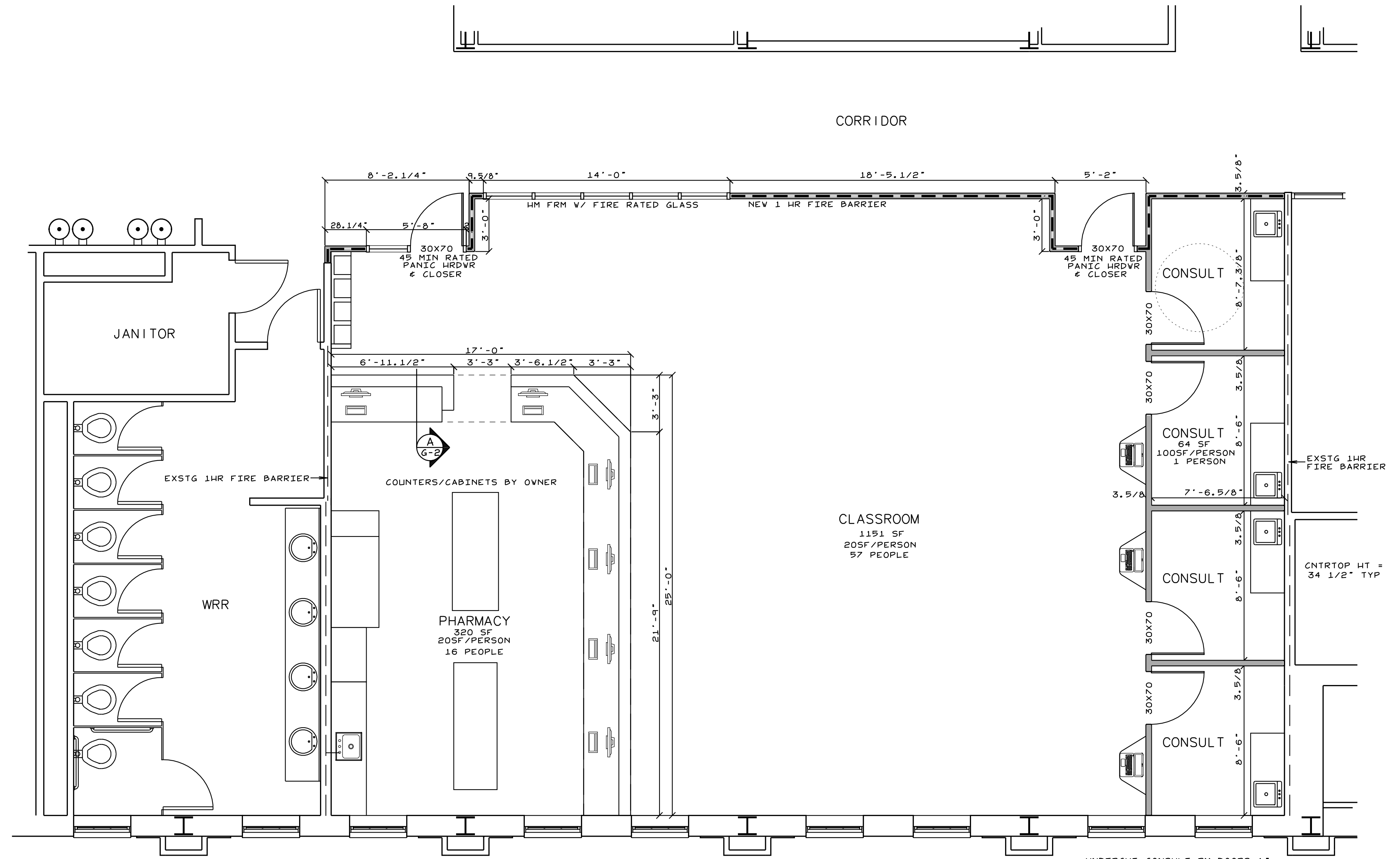
PROPOSED  
OVERALL PLAN

G-2

COPYRIGHT 2026 © SMITH ENGINEERING AND DESIGN, P.A. - ALL RIGHTS RESERVED



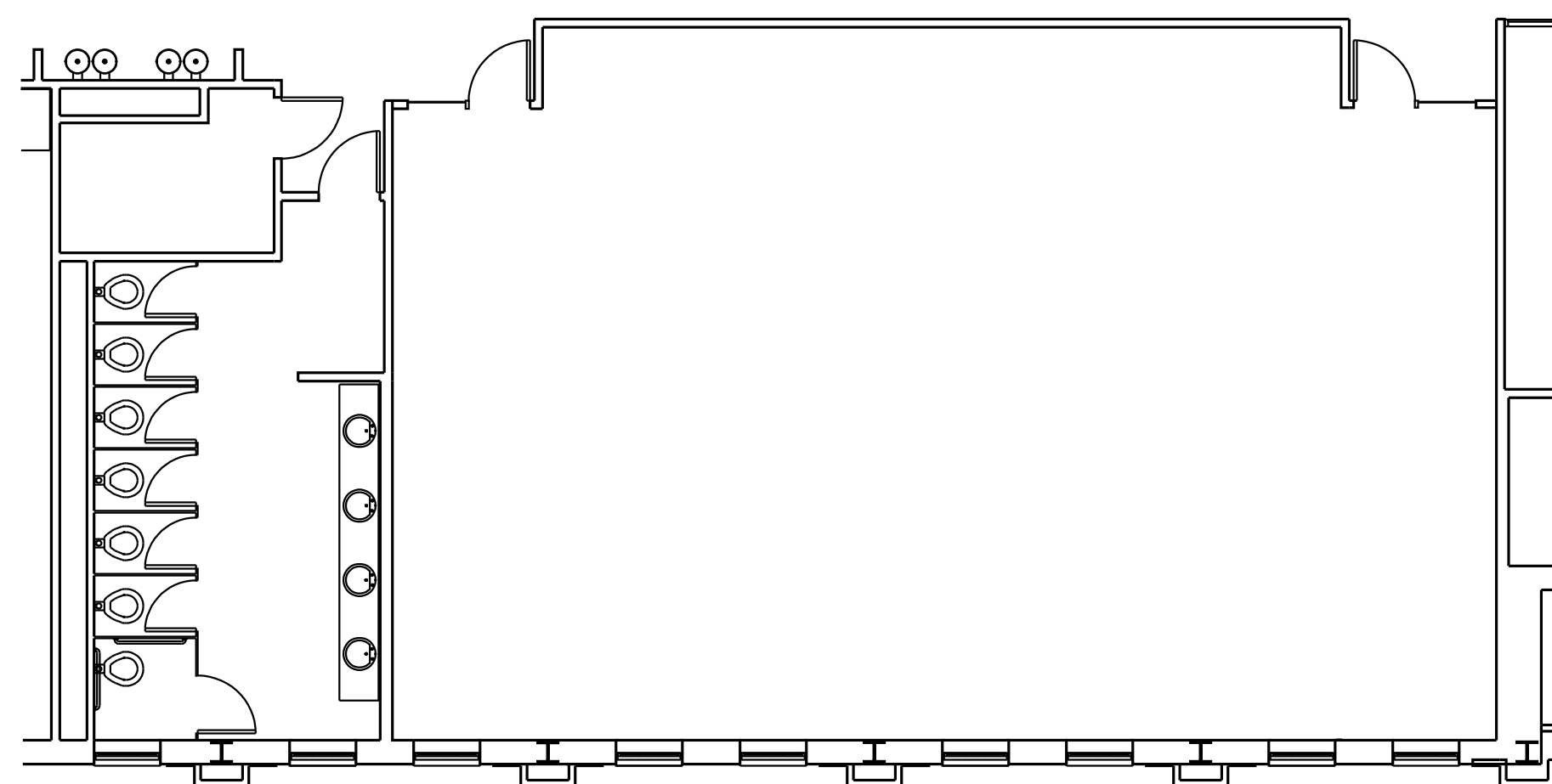
**A SECTION THRU BULKHEAD**  
SCALE: 1/2"=1'-0"



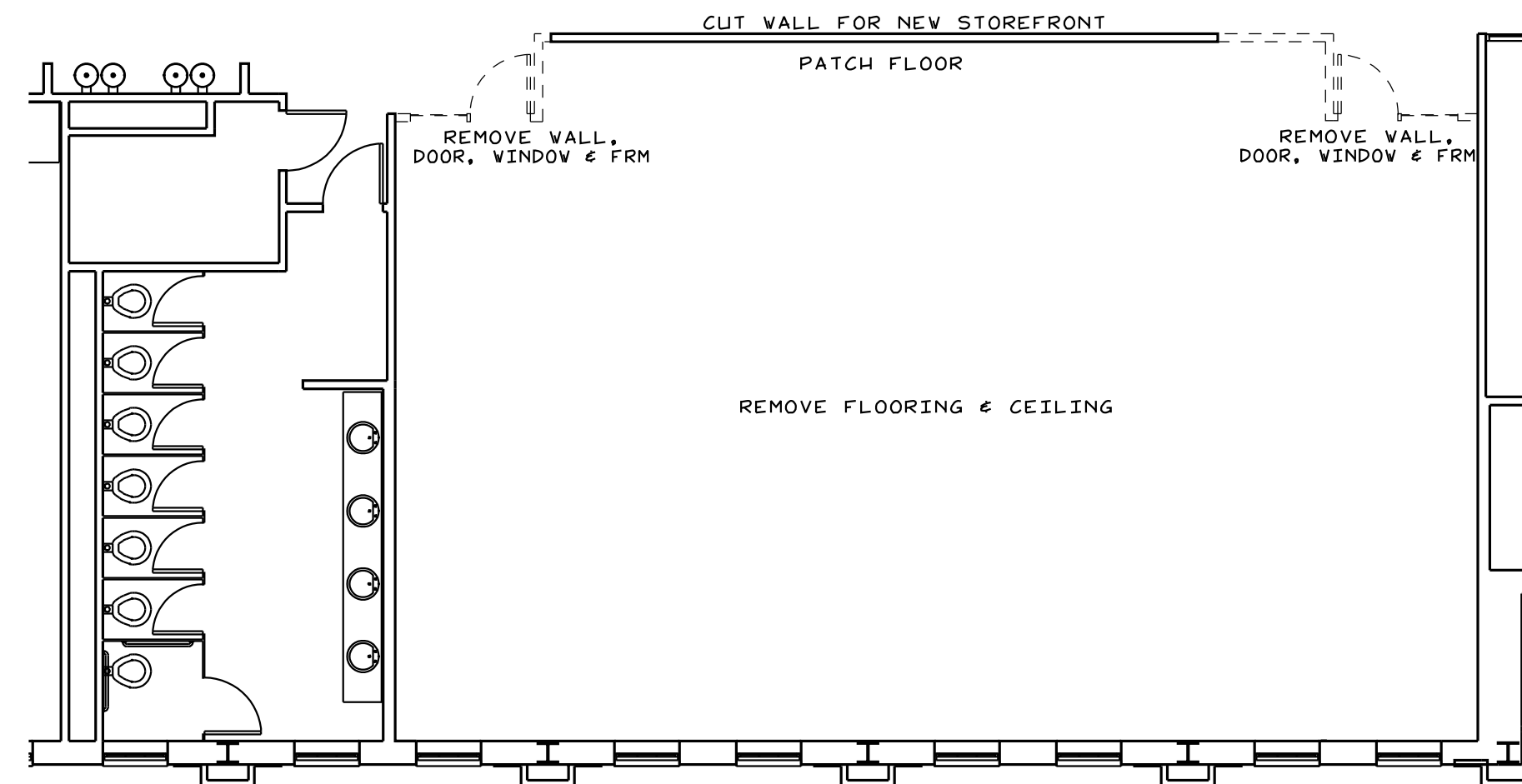
- NEW 3 5/8" 20GA M.S. WALL  
W/ 5/8" FCGVB & SOUND INSUL
- NEW 3 5/8" 20GA M.S. 1 HR FIRE BARRIER  
W/ 5/8" FCGVB & SOUND INSUL
- EXST 1 HR FIRE BARRIER

**FLOOR PLAN**  
SCALE: 1/4"=1'-0"

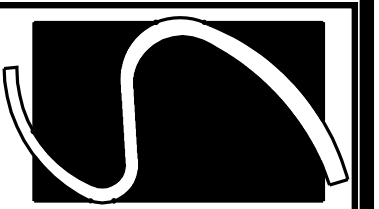
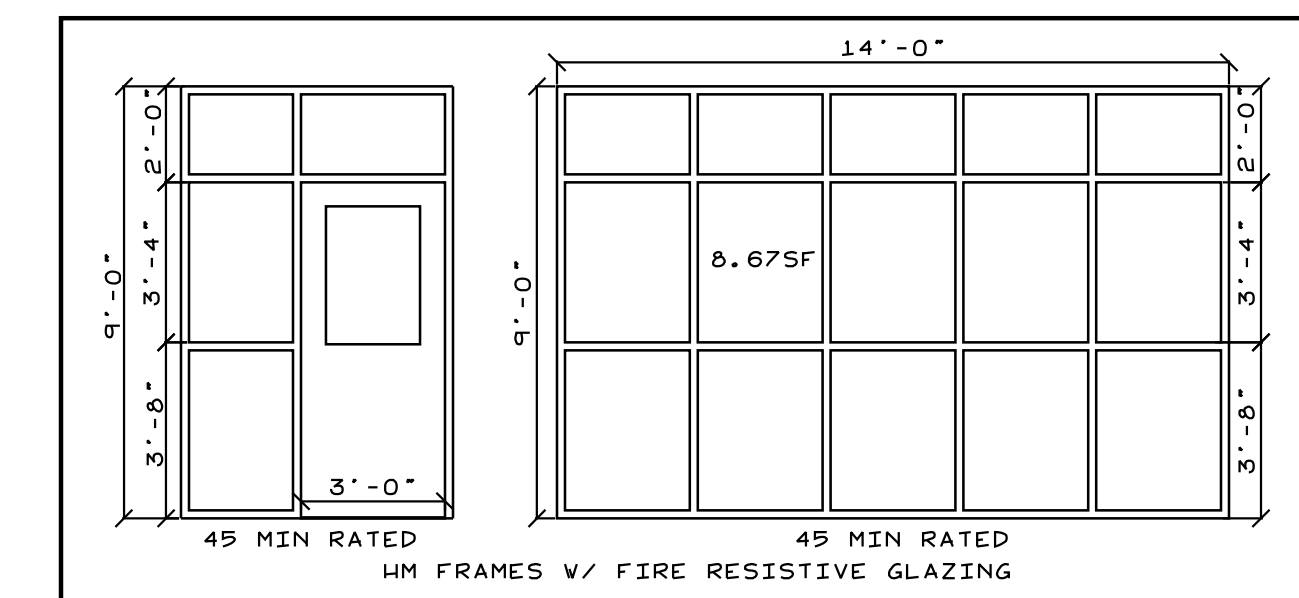
BUSINESS OCCUPANCY  
NO CHANGE IN OCCUPANCY



**AS BUILT FLOOR PLAN**  
SCALE: 1/8"=1'-0"

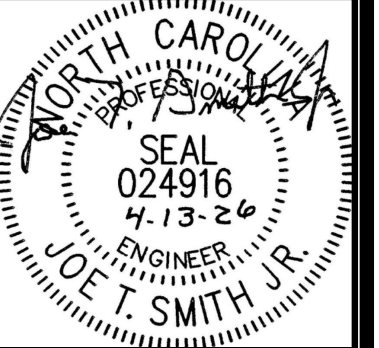


**DEMOLITION FLOOR PLAN**  
SCALE: 1/8"=1'-0"



**Smith Engineering  
and Design, P.A.**  
1103 Gracie Place - Suite A  
Goldsboro, N.C. 27534  
Phone: 919.736.2141  
Fax: 919.736.2142  
Corporate license # C-2241

This drawing is the property  
of Smith Engineering & Design,  
and may not be used or copied  
without SE&D's permission.



REVISIONS

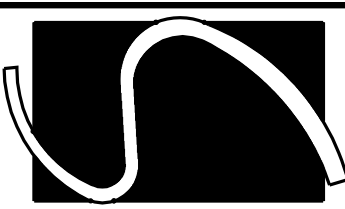
**PHARMACY CLASSROOM  
CAMPBELL UNIVERSITY  
BOUIES CREEK, N.C.**

JOB #26005  
DRAWN BY: JL  
DATE: 04/13/2026

**FLOOR PLAN  
AS BLT/DEMO**

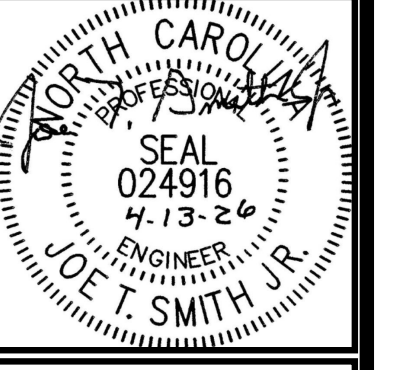
**G-3**

COPYRIGHT 2026 © SMITH ENGINEERING AND DESIGN, P.A. - ALL RIGHTS RESERVED



Smith Engineering  
and Design, P.A.  
1103 Gracie Place - Suite A  
Goldsboro, N.C. 27534  
Phone: 919.736.2141  
Fax: 919.736.2142  
Corporate license # C-2241

This drawing is the property  
of Smith Engineering & Design  
and may not be used or copied  
without SE&D's permission.



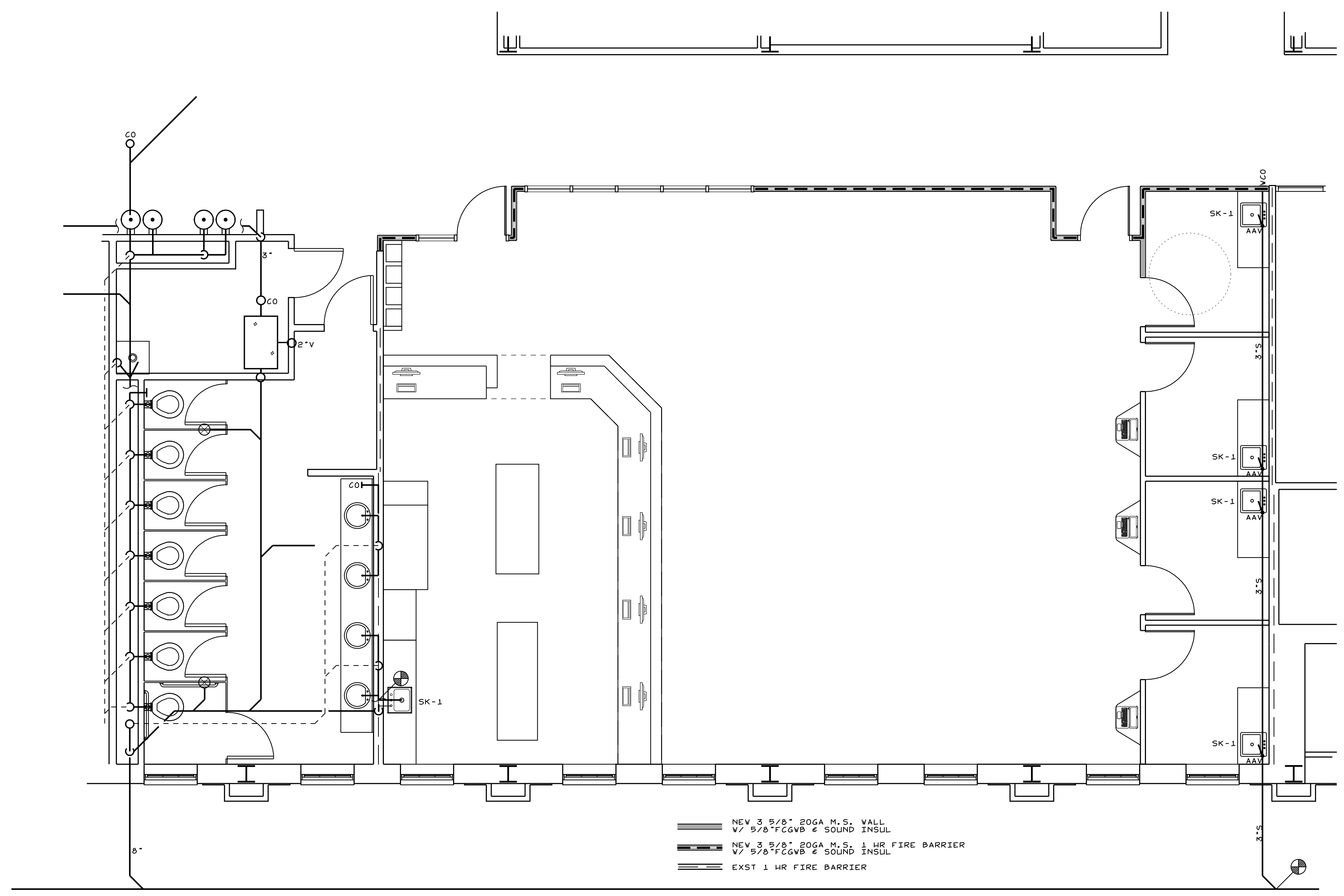
REVISIONS

PHARMACY CLASSROOM  
CAMPBELL UNIVERSITY  
BOUIES CREEK, N.C.

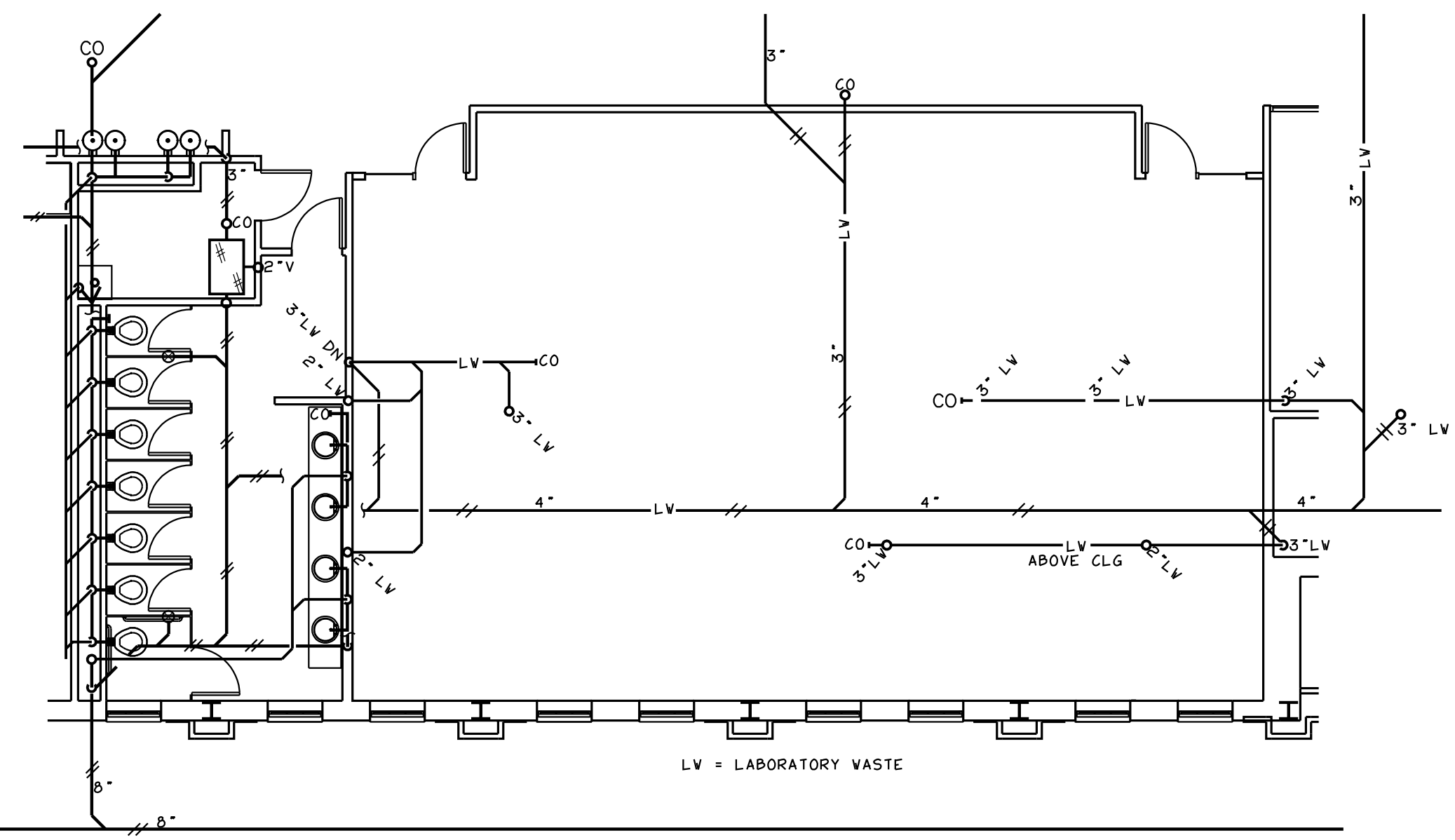
JOB #26005  
DRAWN BY: JL  
DATE: 04/13/2026

WASTE PLAN  
AS BLT/DEMO

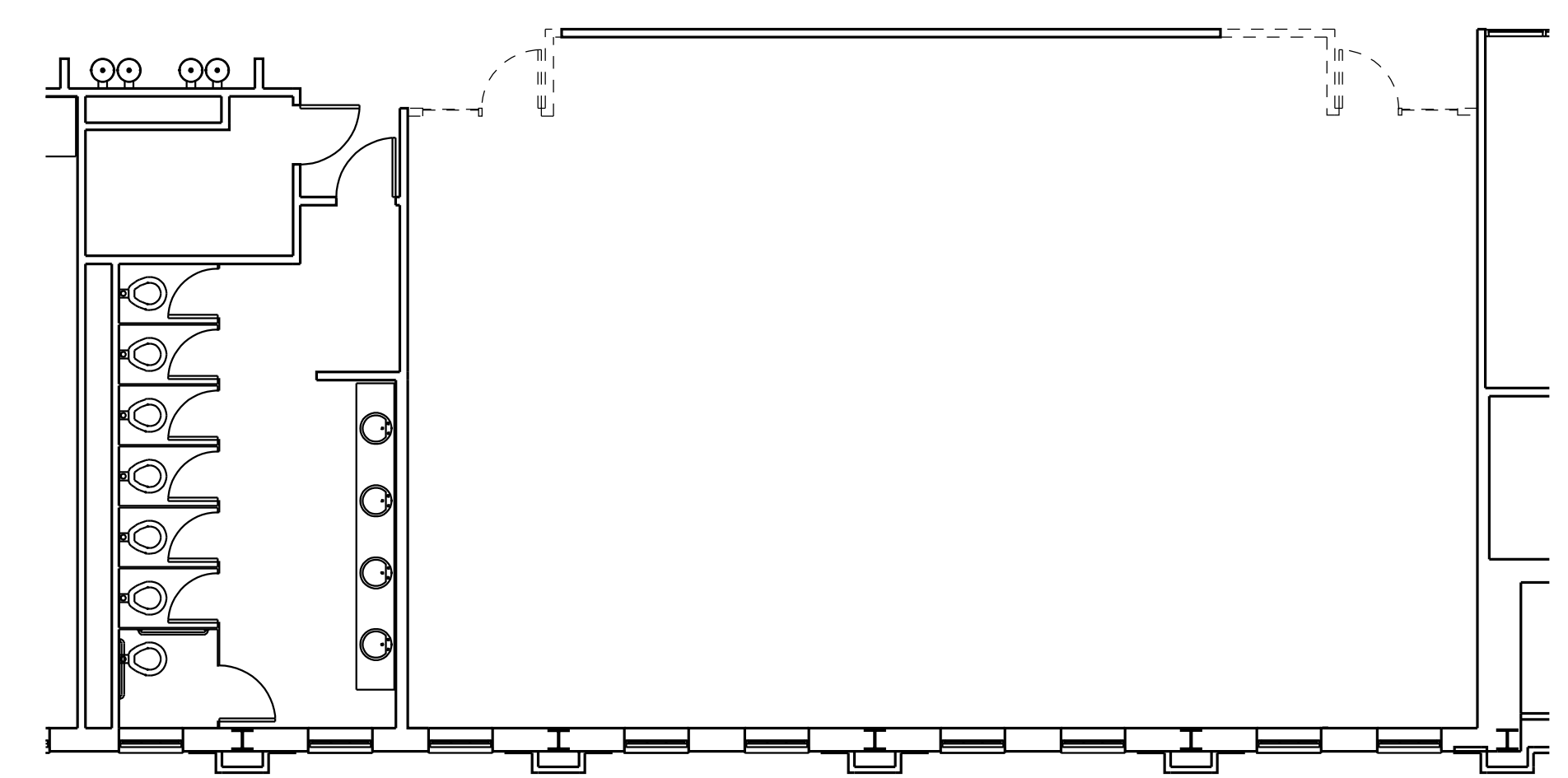
P-1



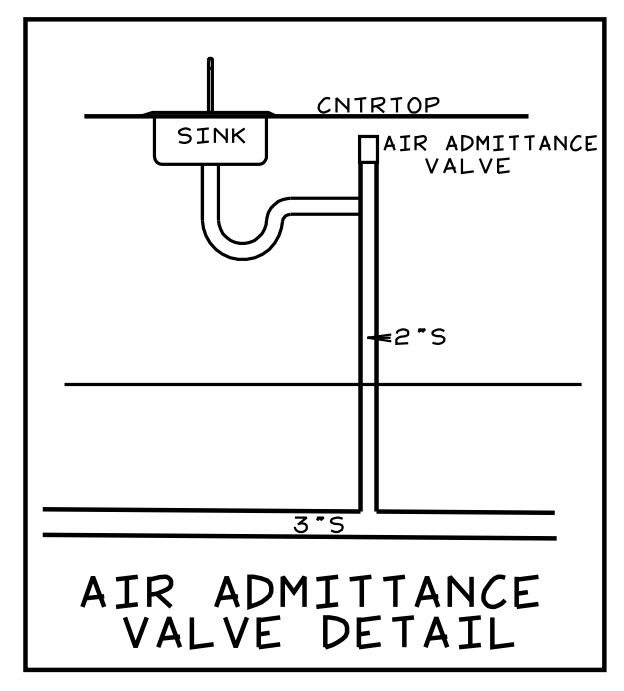
WASTE PLAN  
SCALE: 1/4"=1'-0"



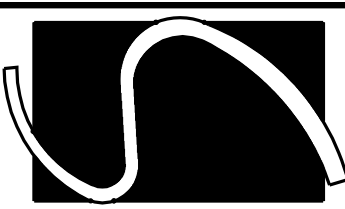
AS BUILT WASTE PLAN  
SCALE: 1/8"=1'-0"



DEMOLITION WASTE PLAN  
SCALE: 1/8"=1'-0"

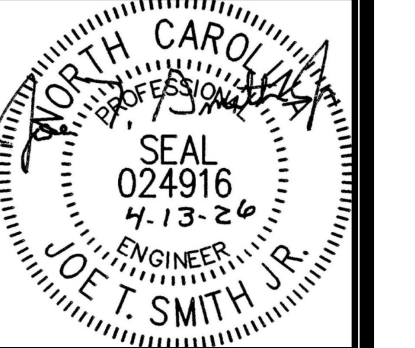


COPYRIGHT 2026 © SMITH ENGINEERING AND DESIGN, P.A. - ALL RIGHTS RESERVED



Smith Engineering  
and Design, P.A.  
1103 Gracie Place - Suite A  
Goldsboro, N.C. 27534  
Phone: 919.736.2141  
Fax: 919.736.2142  
Corporate license # C-2241

This drawing is the property  
of Smith Engineering & Design  
and may not be used or copied  
without SE&D's permission.



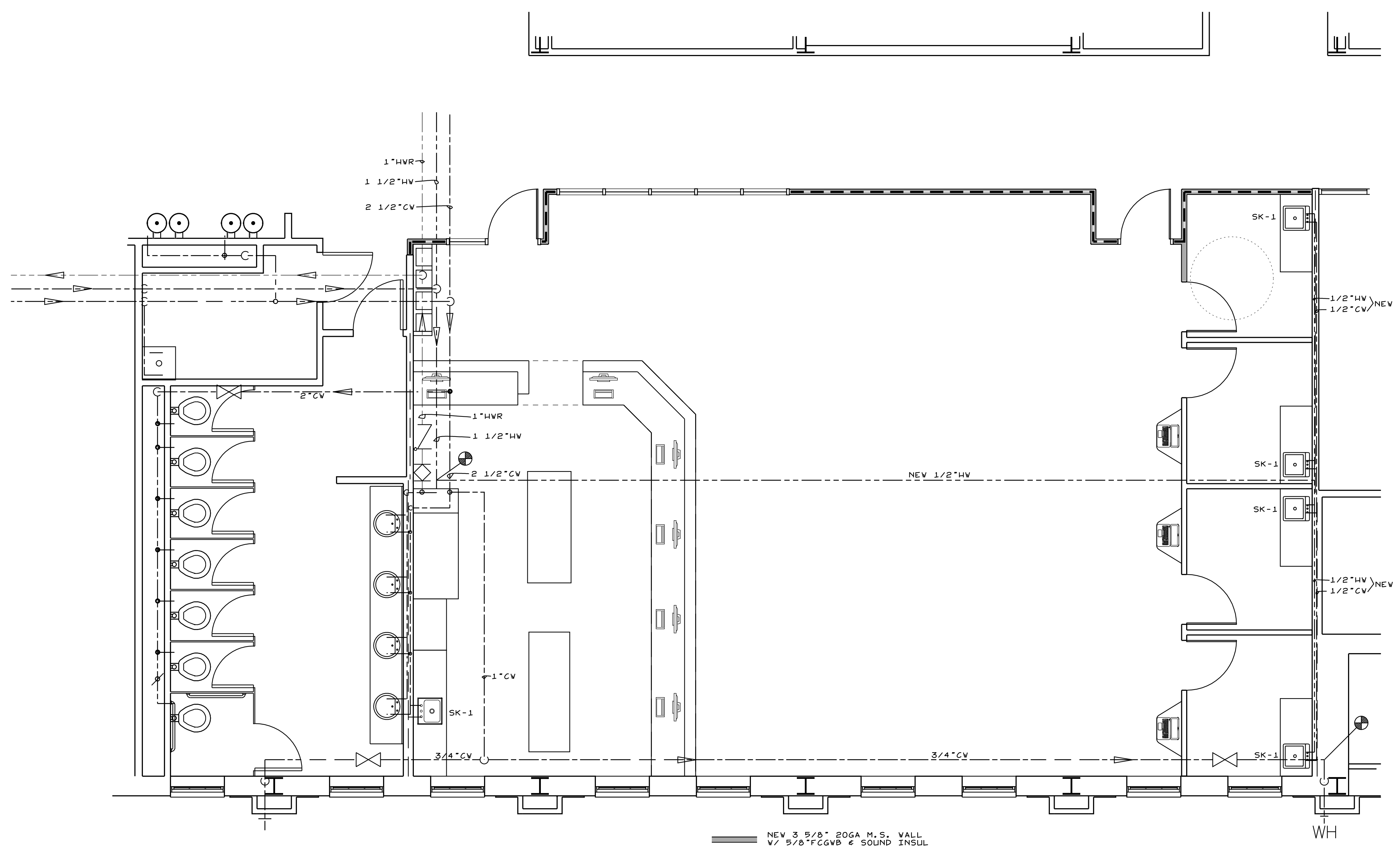
REVISIONS

PHARMACY CLASSROOM  
CAMPBELL UNIVERSITY  
BOUIES CREEK, N.C.

JOB #26005  
DRAWN BY: JL  
DATE: 04/13/2026

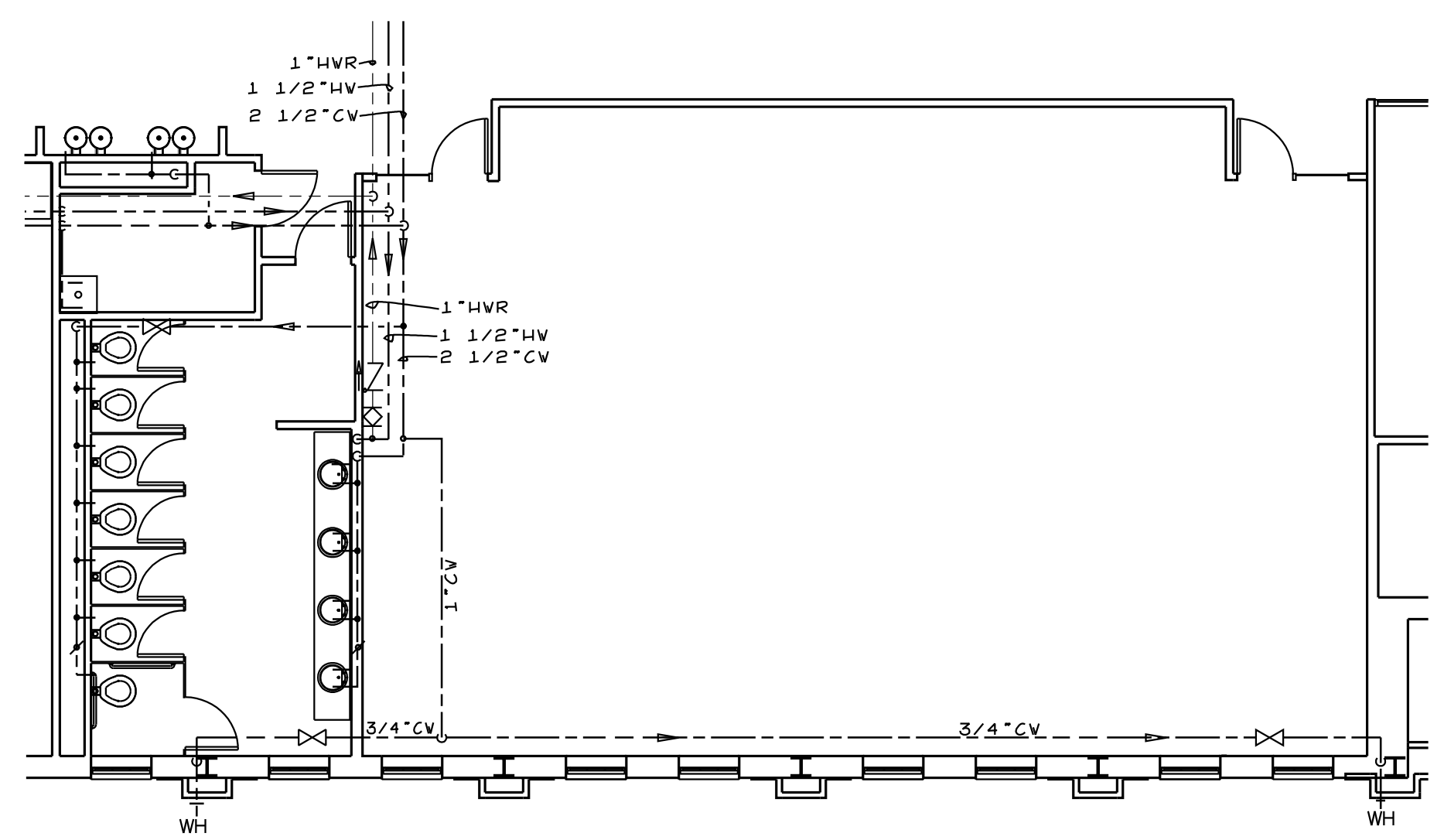
WATER PLAN  
AS BLT/DEMO

P-2

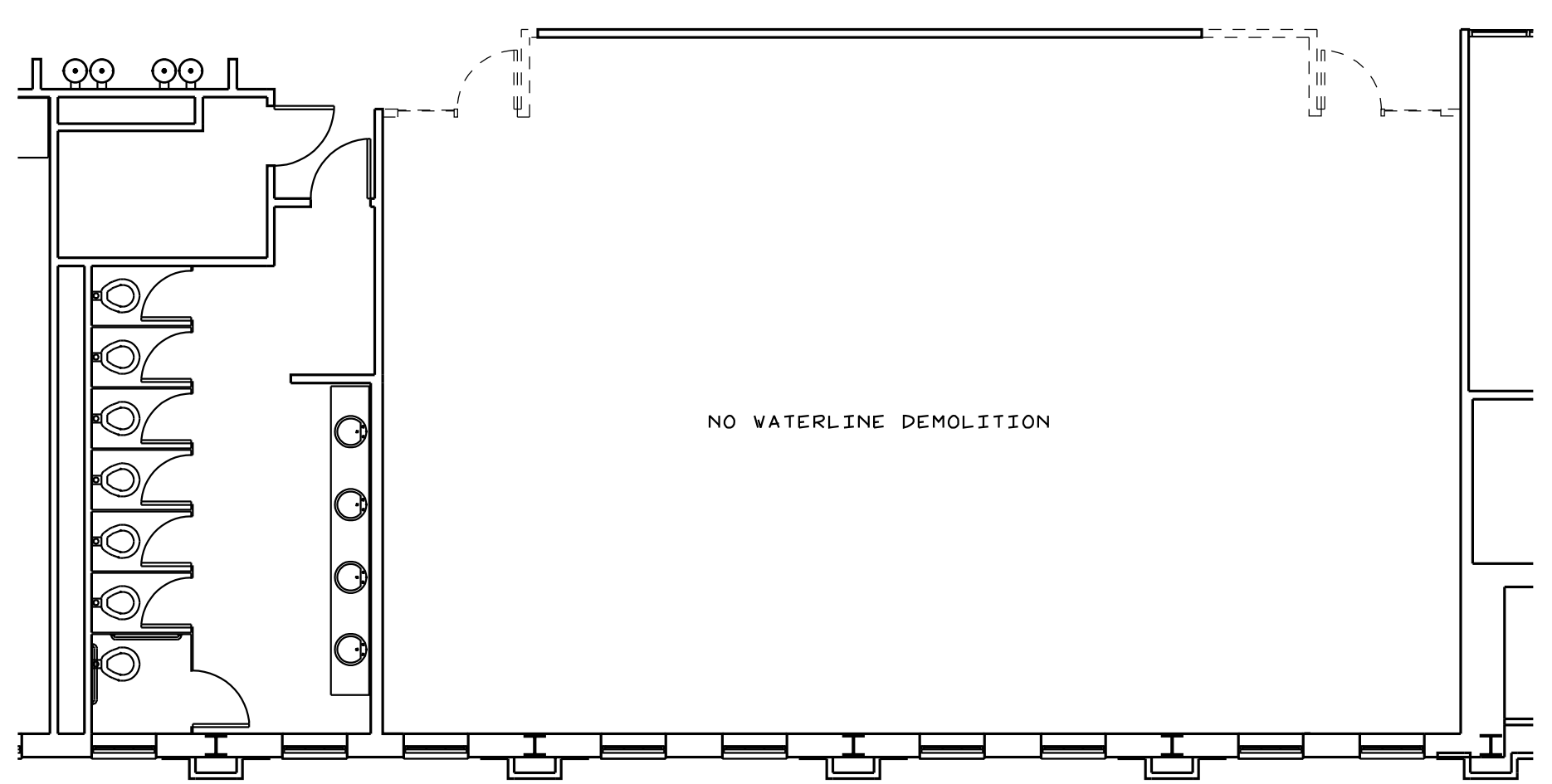


- NEW 3/8" 20GA M.S. WALL  
W/ 5/8" FCGVB & SOUND INSUL
- NEW 3/8" 20GA M.S. 1 HR FIRE BARRIER  
W/ 5/8" FCGVB & SOUND INSUL
- EXST 1 HR FIRE BARRIER

**WATER PLAN**  
SCALE: 1/4"=1'-0"



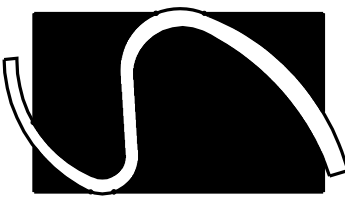
**AS BUILT WATER PLAN**  
SCALE: 1/8"=1'-0"



**DEMOLITION WATER PLAN**  
SCALE: 1/8"=1'-0"

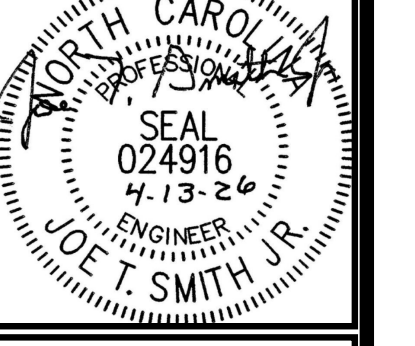
COPYRIGHT 2026 © SMITH ENGINEERING AND DESIGN, P.A. - ALL RIGHTS RESERVED





Smith Engineering  
and Design, P.A.  
1103 Gracie Place - Suite A  
Goldsboro, N.C. 27534  
Phone: 919.736.2141  
Fax: 919.736.2142  
Corporate license # C-2241

This drawing is the property of Smith Engineering & Design and may not be used or copied without SE&D's permission.



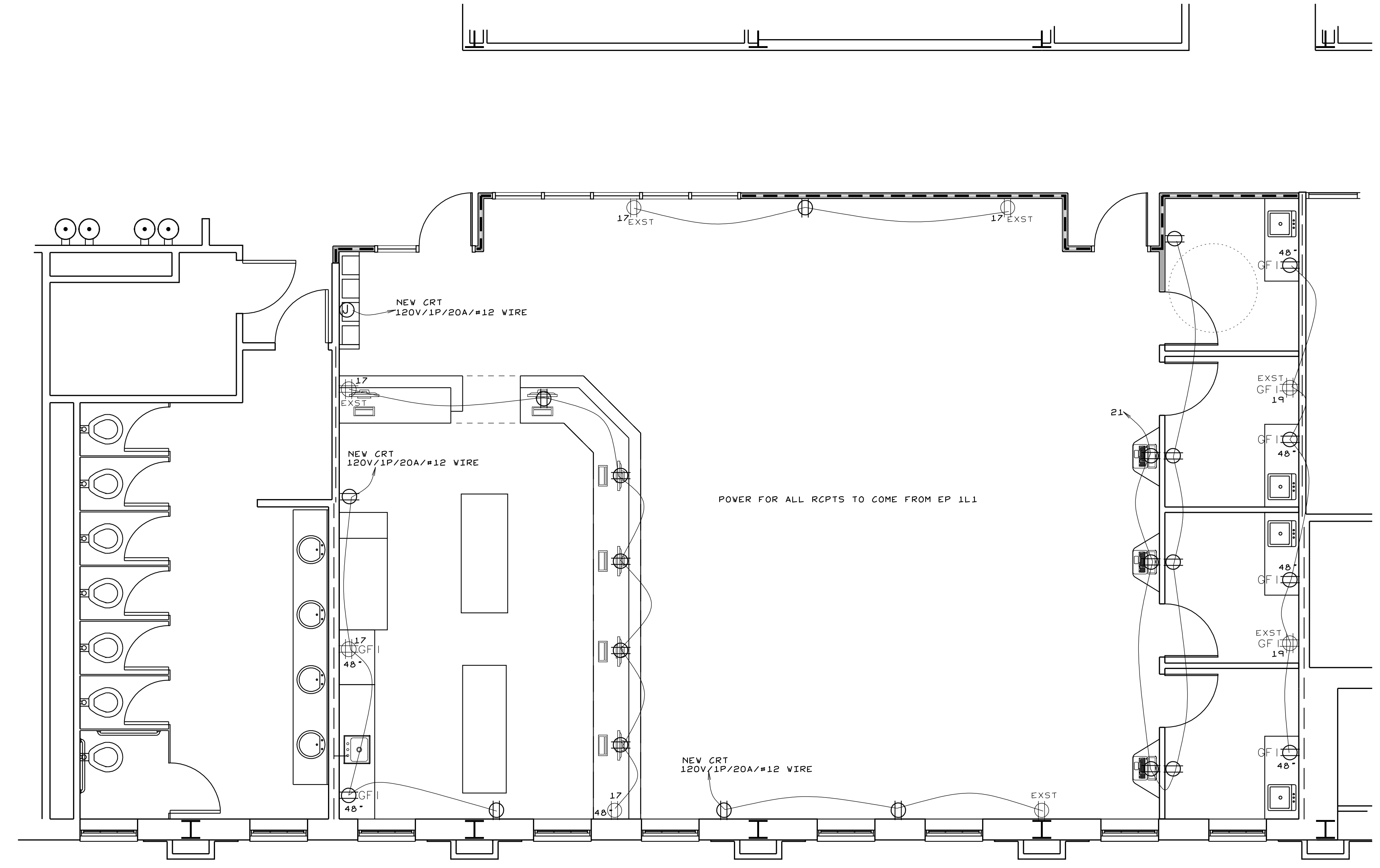
REVISIONS

PHARMACY CLASSROOM  
CAMPBELL UNIVERSITY  
BOUIES CREEK, N.C.

JOB #26005  
DRAWN BY: JL  
DATE: 04/13/2026

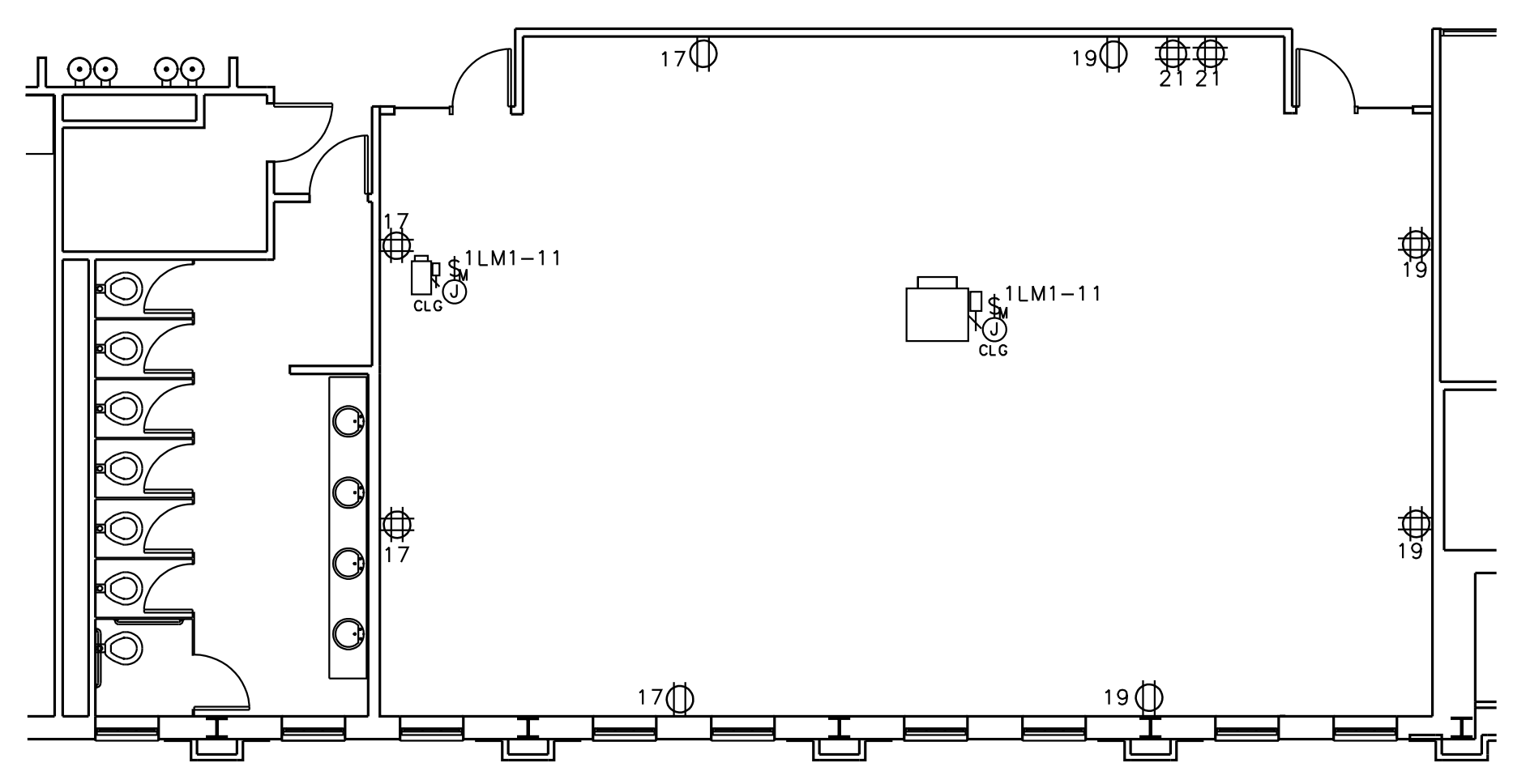
POWER PLAN  
AS BLT/DEMO

E-1

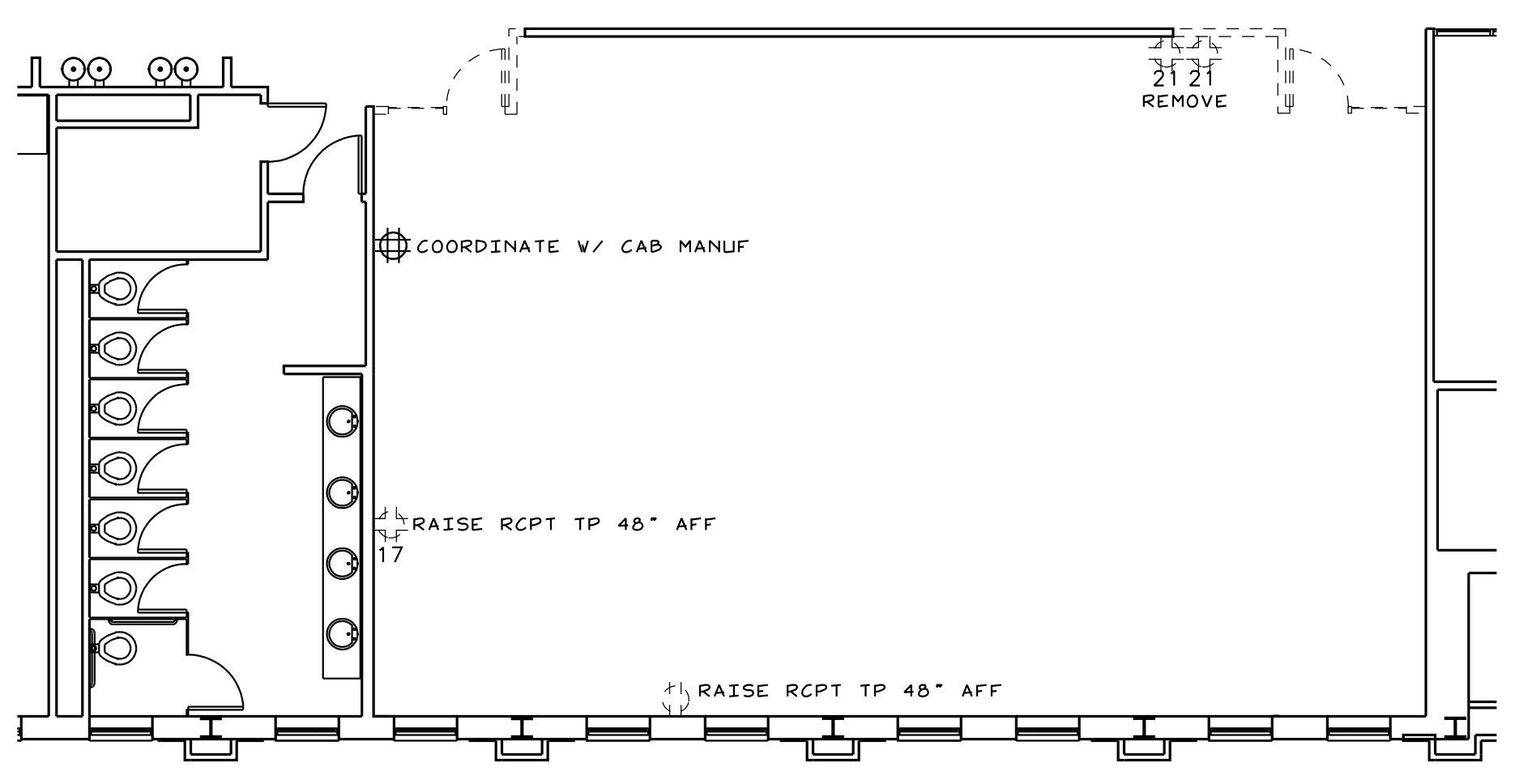


- NEW 3/8" 20GA M.S. WALL  
W/ 5/8" FCGVB & SOUND INSUL
- NEW 3/8" 20GA M.S. 1 HR FIRE BARRIER  
W/ 5/8" FCGVB & SOUND INSUL
- EXST 1 HR FIRE BARRIER

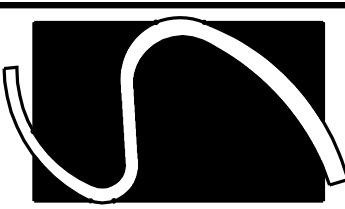
**POWER PLAN**  
SCALE: 1/4"=1'-0"



**AS BUILT POWER PLAN**  
SCALE: 1/8"=1'-0"

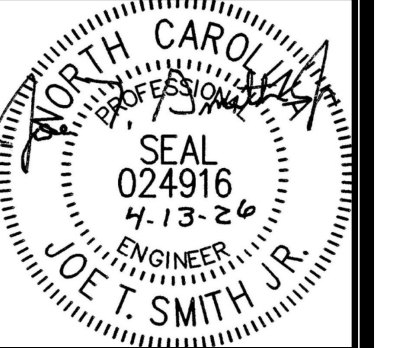


**DEMOLITION POWER PLAN**  
SCALE: 1/8"=1'-0"



Smith Engineering  
and Design, P.A.  
1103 Gracie Place - Suite A  
Goldsboro, N.C. 27534  
Phone: 919.736.2141  
Fax: 919.736.2142  
Corporate license # C-2241

This drawing is the property  
of Smith Engineering & Design  
and may not be used or copied  
without SE&D's permission.



REVISIONS

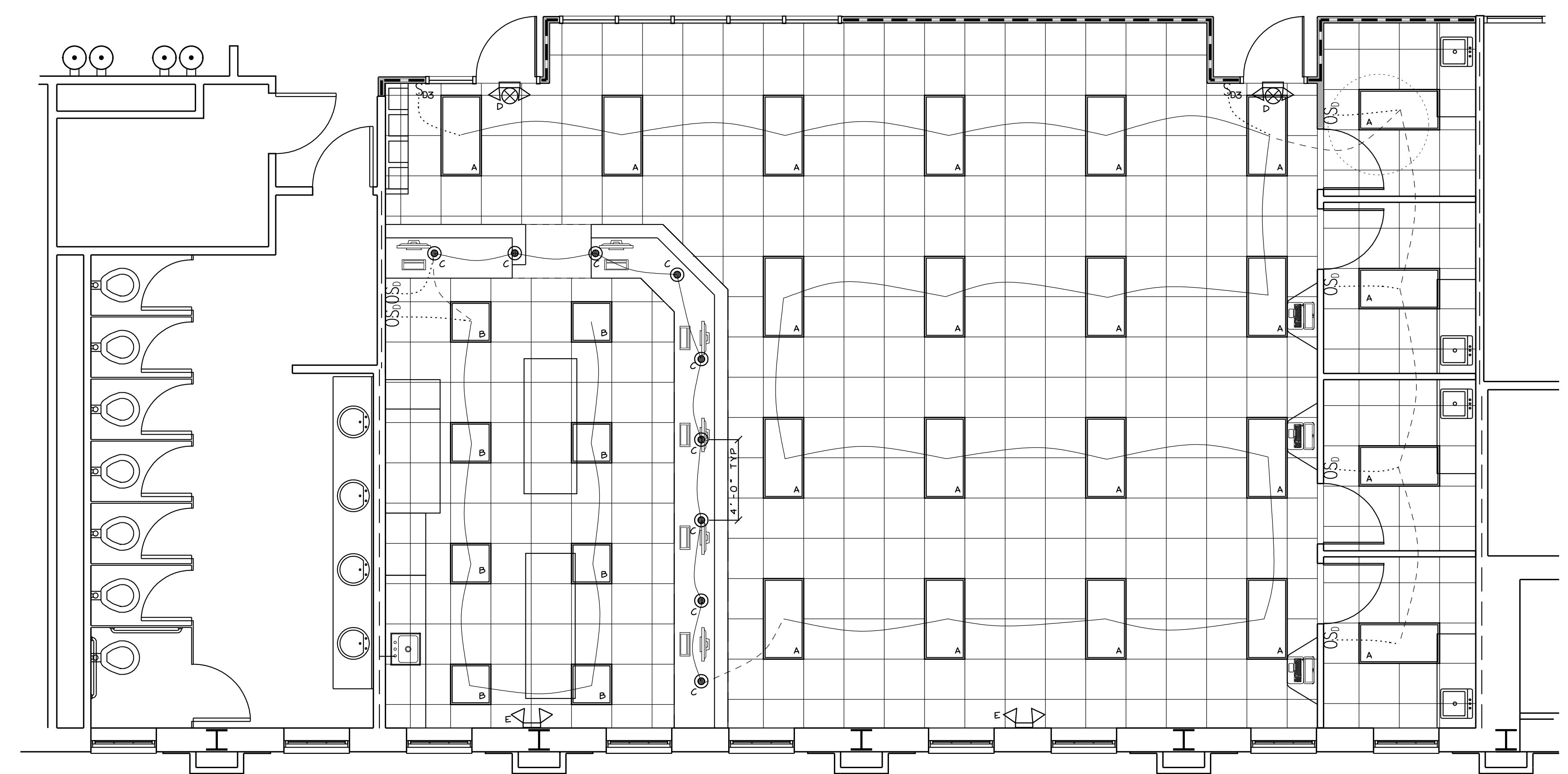
PHARMACY CLASSROOM  
CAMPBELL UNIVERSITY  
BOUIES CREEK, N.C.  
COPYRIGHT 2026 © SMITH ENGINEERING AND DESIGN, P.A. - ALL RIGHTS RESERVED

JOB #26005  
DRAWN BY: JL  
DATE: 04/13/2026

LIGHTING PLAN  
AS BLT/DEMO

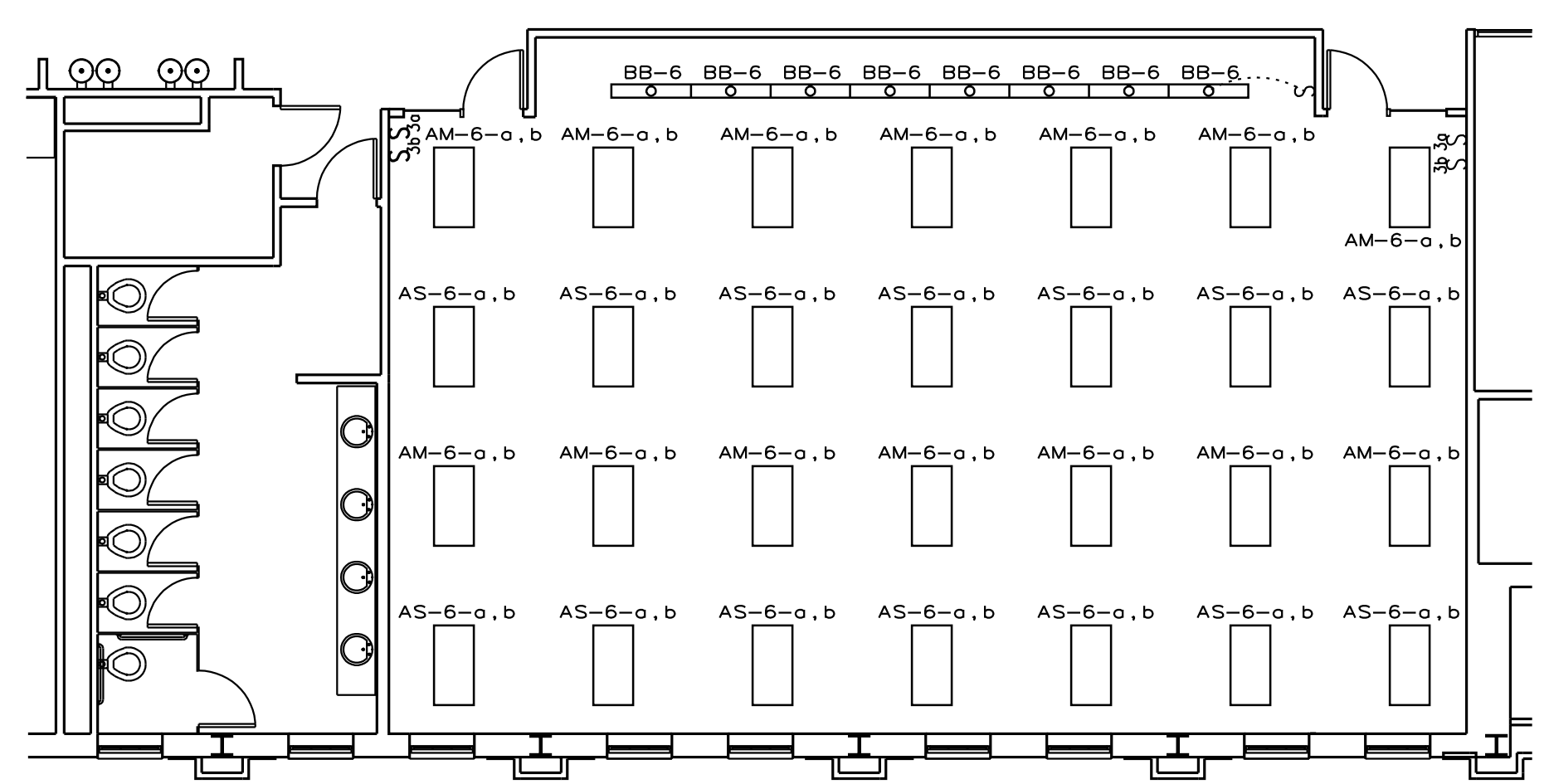
E-2

LIGHTING FIXTURE SCHEDULE				
TYPE	DESCRIPTION	MANUFACTURER	CATALOG NO.	FIXTURE WATTAGE
A	2X4 FLAT PANEL LED	LSI	SFP24 LEWD FS UNV DIM	45W
B	2X2 FLAT PANEL LED	LSI	SFP22 LEWD FS UNV DIM	40W
C	8" CANLESS LED CLG LGT	JUNO	VF8 SWV5 90CRI MW	19W
D	EMER/EX LGT	LSI	LBC R 1F VH SD2	3W
E	EMER LGT	LSI	HEL HPV VH SD2	11W

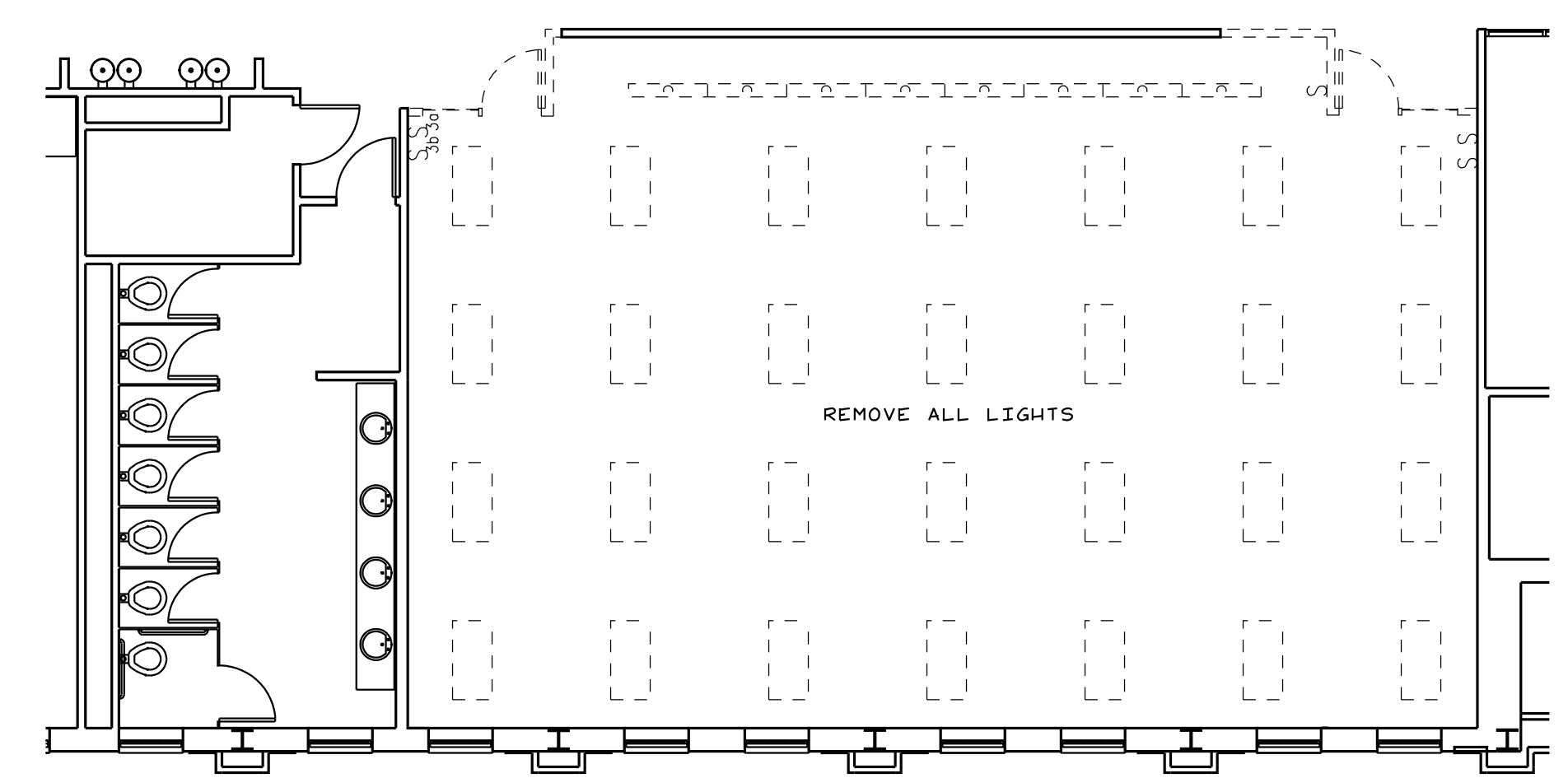


- NEW 3 5/8" 20GA M.S. WALL  
W/ 5/8" FCGVB & SOUND INSUL
  - NEW 3 5/8" 20GA M.S. 1 HR FIRE BARRIER  
W/ 5/8" FCGVB & SOUND INSUL
  - EXST 1 HR FIRE BARRIER
- TIE LIGHTS TO EXISTING CIRCUIT  
TOTAL WATTAGE 1480

**LIGHTING PLAN**  
SCALE: 1/4"=1'-0"



**AS BUILT LIGHTING PLAN**  
SCALE: 1/8"=1'-0"



**DEMOLITION LIGHTING PLAN**  
SCALE: 1/8"=1'-0"