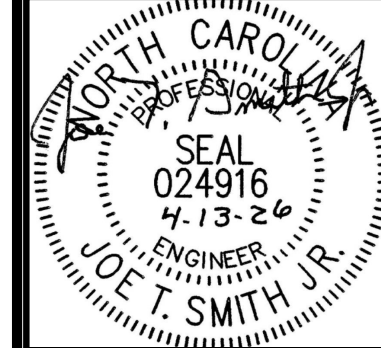


AS BUILT OVERALL FLOOR PLAN  
SCALE: 1/8"=1'-0"

Smith Engineering  
and Design, P.A.  
1103 Gracie Place - Suite A  
Goldsboro, N.C. 27534  
Phone: 919.736.2141  
Fax: 919.736.2142  
Corporate license # C-2241

This drawing is the property of Smith Engineering & Design and may not be used or copied without SE&D's permission.



REVISIONS

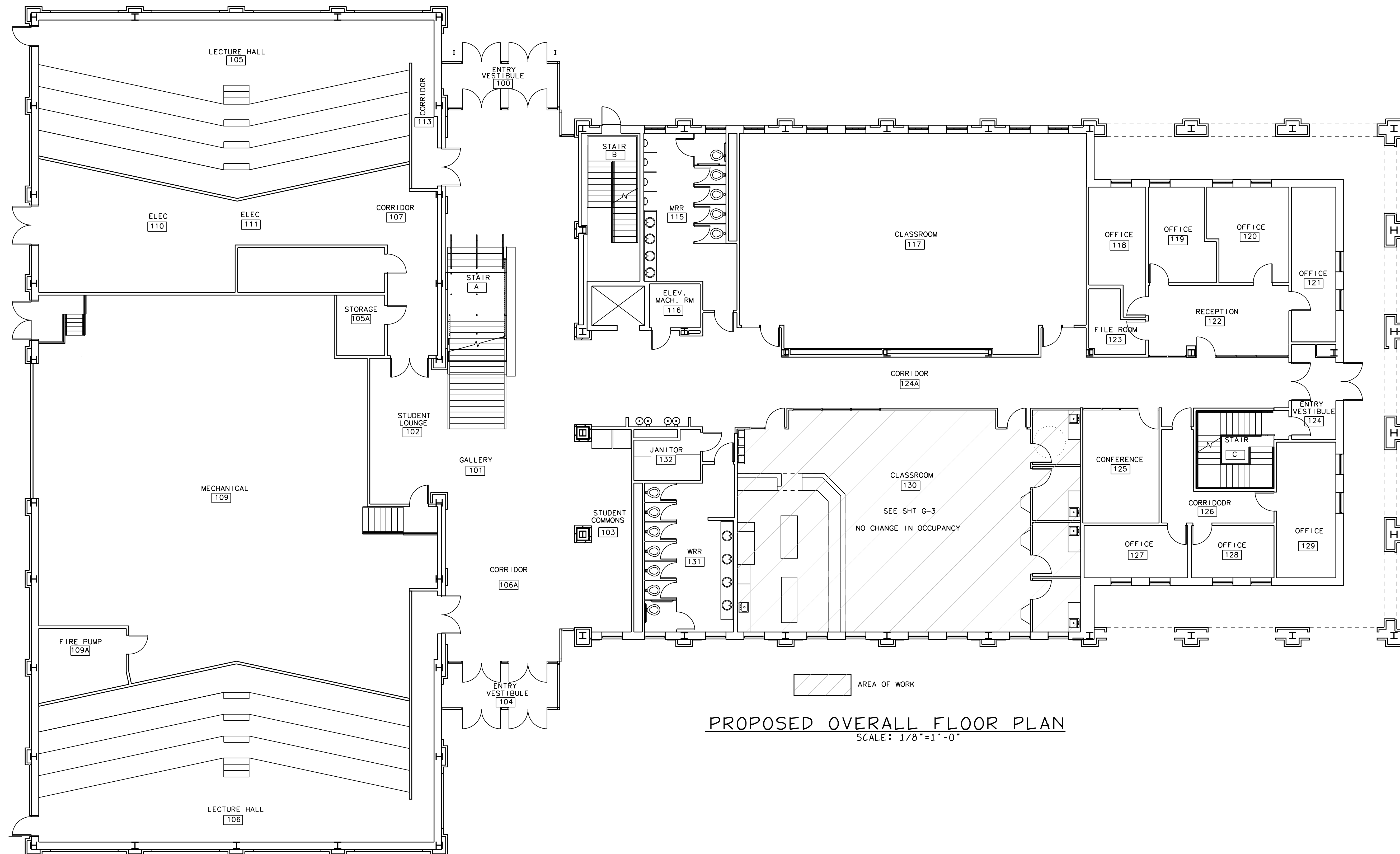
PHARMACY CLASSROOM  
CAMPBELL UNIVERSITY  
BOUIES CREEK, N.C.

JOB #26005  
DRAWN BY: JL  
DATE: 04/13/2026

AS BUILT  
OVERALL  
FLOOR PLAN

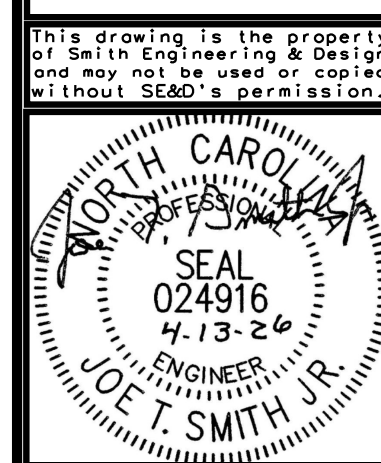
G-1

COPYRIGHT 2026 © SMITH ENGINEERING AND DESIGN, P.A. - ALL RIGHTS RESERVED



PROPOSED OVERALL FLOOR PLAN  
 SCALE: 1/8"=1'-0"

Smith Engineering  
 and Design, P.A.  
 1103 Gracie Place - Suite A  
 Goldsboro, N.C. 27534  
 Phone: 919.736.2141  
 Fax: 919.736.2142  
 Corporate license # C-2241



REVISIONS

NO.	DESCRIPTION

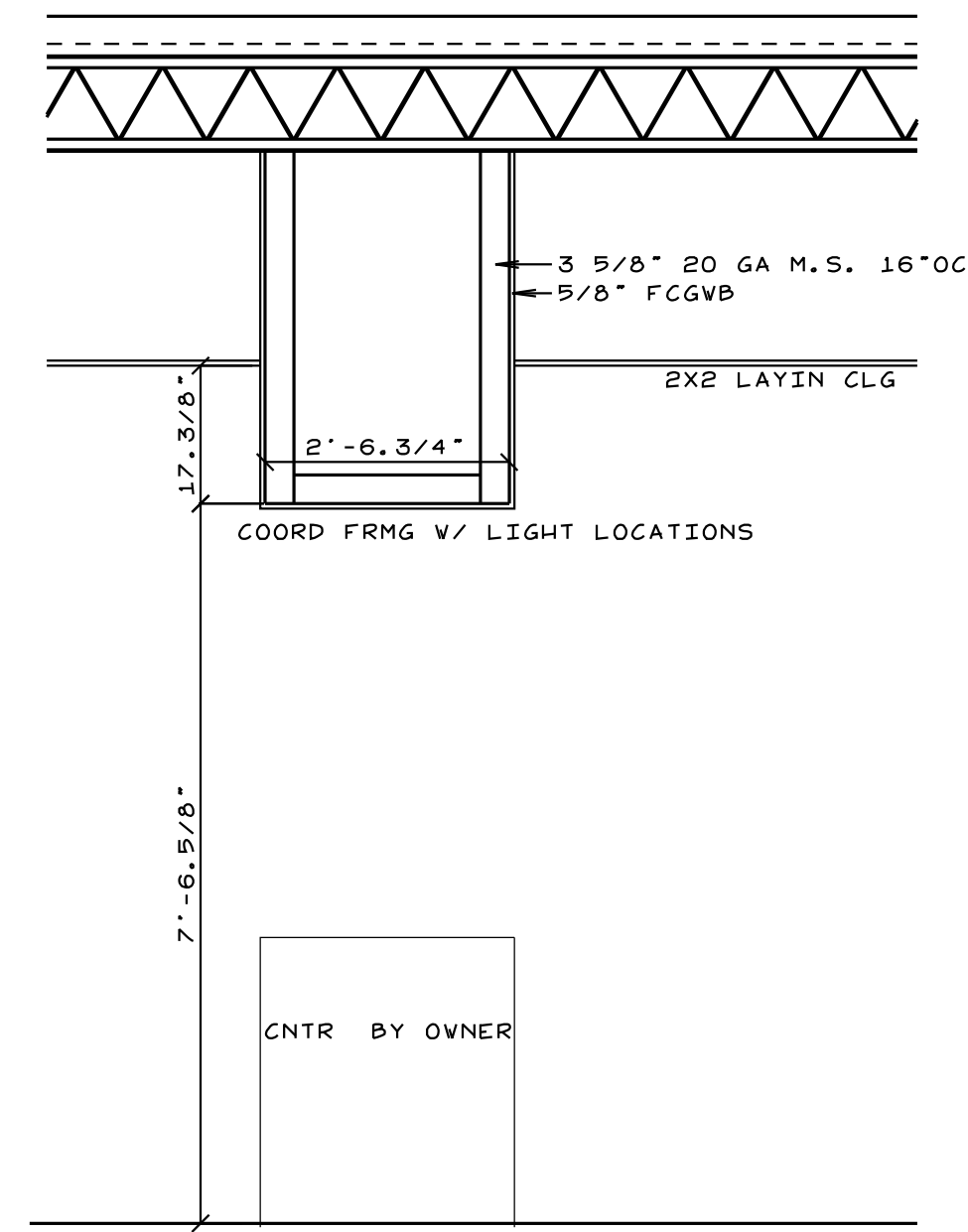
PHARMACY CLASSROOM  
 CAMPBELL UNIVERSITY  
 BOUIES CREEK, N.C.

JOB #26005  
 DRAWN BY: JL  
 DATE: 04/13/2026

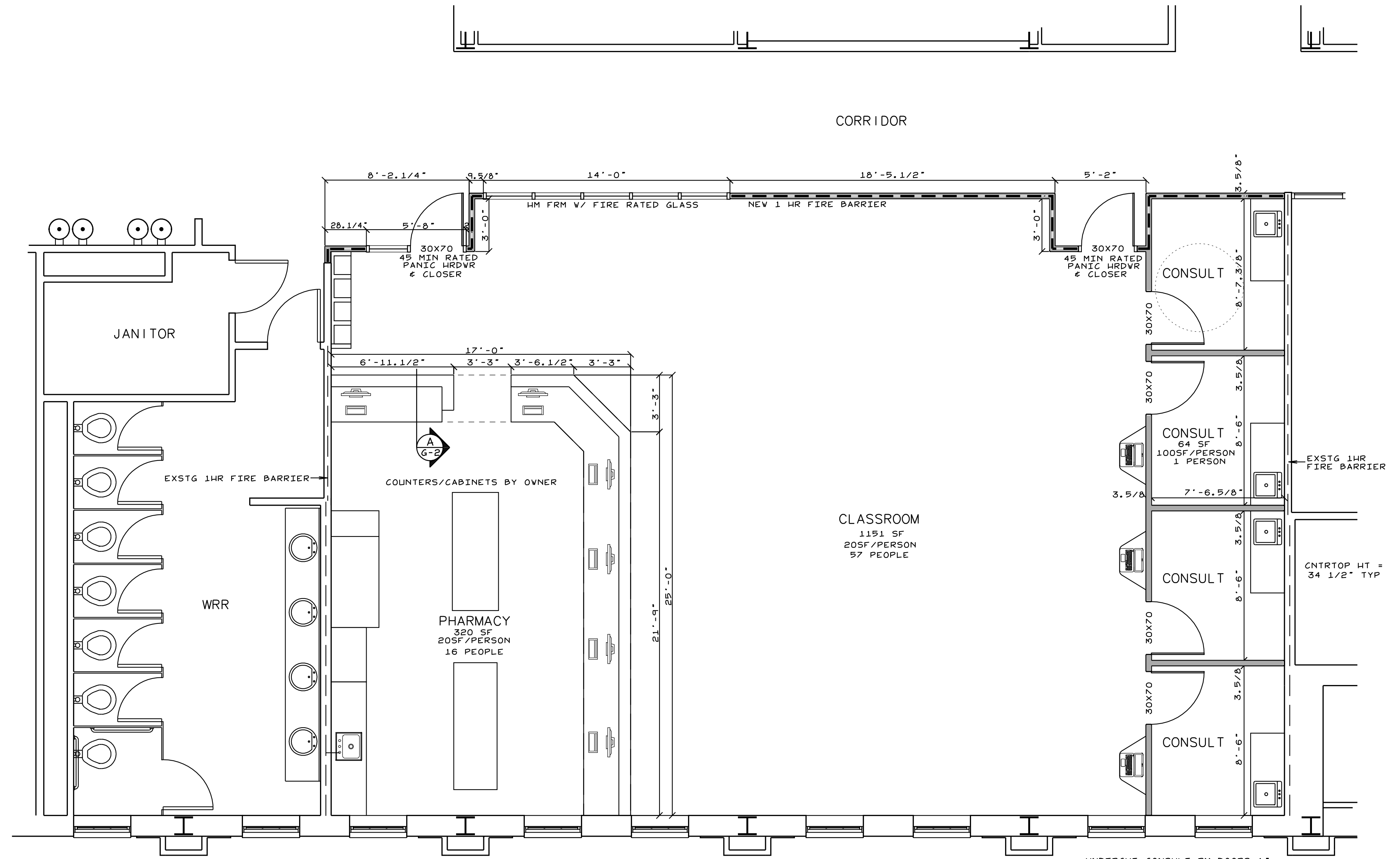
PROPOSED  
 OVERALL PLAN

G-2

COPYRIGHT 2026 © SMITH ENGINEERING AND DESIGN, P.A. - ALL RIGHTS RESERVED



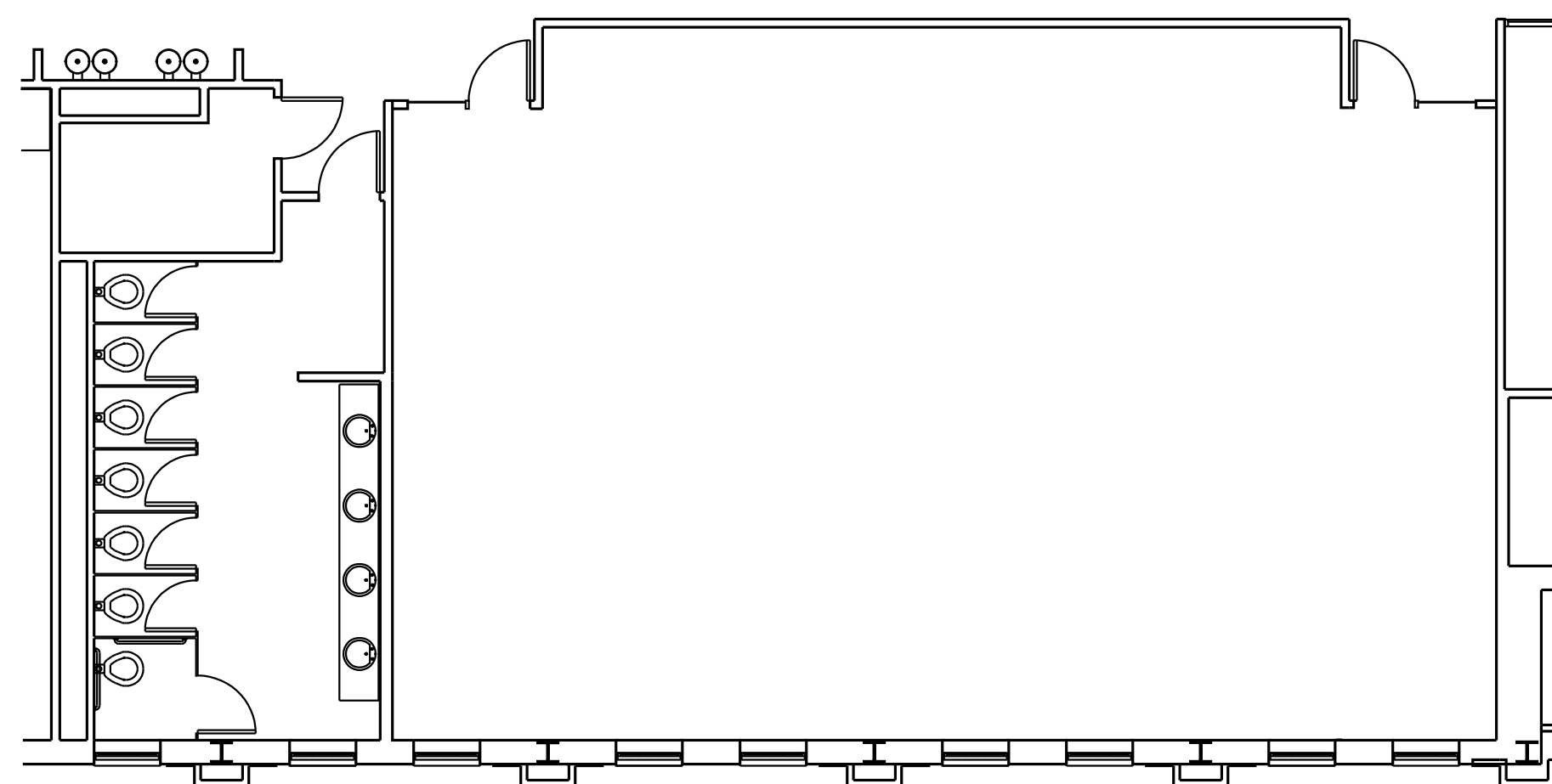
**A SECTION THRU BULKHEAD**  
SCALE: 1/2"=1'-0"



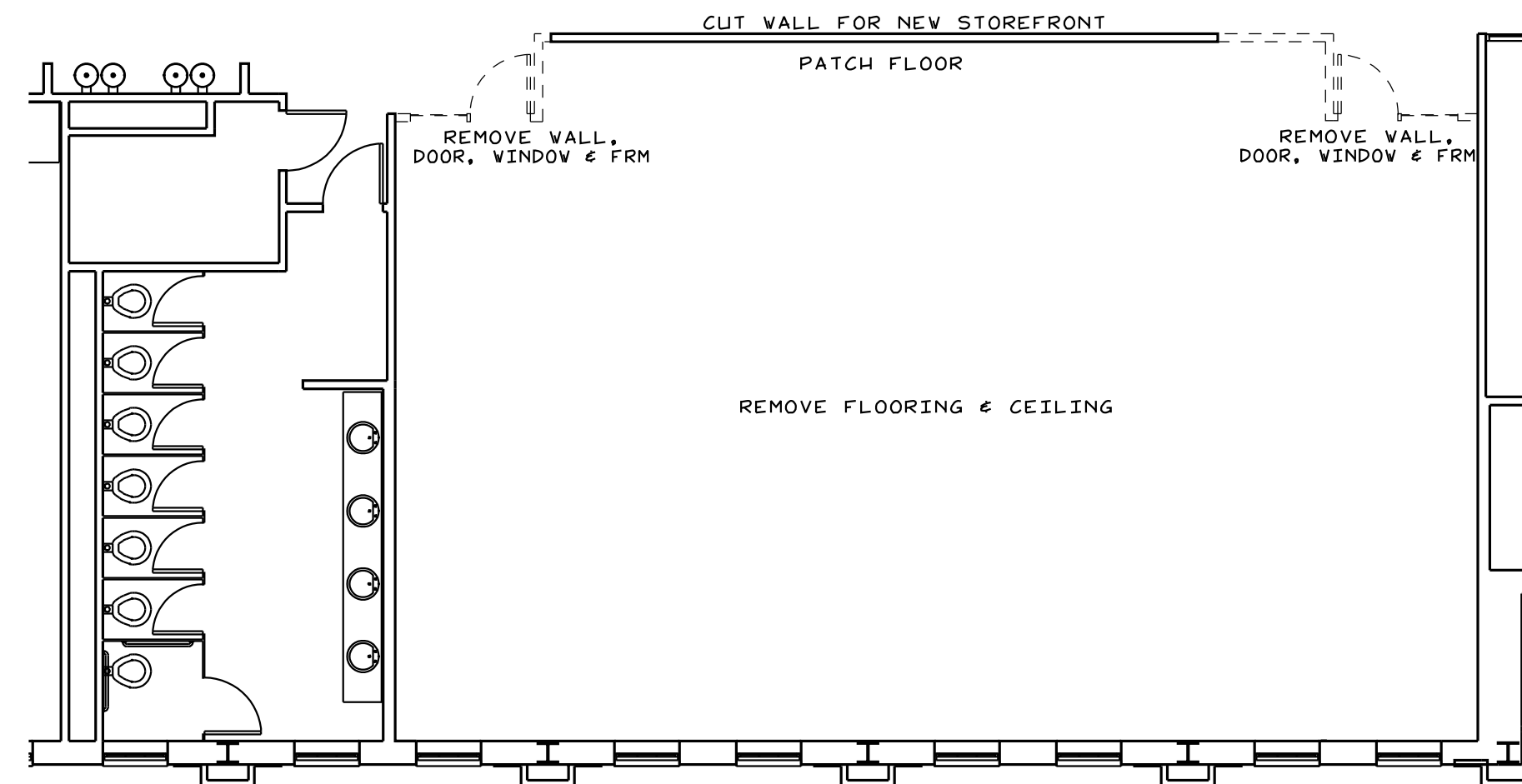
- NEW 3 5/8" 20GA M.S. WALL  
W/ 5/8" FCGVB & SOUND INSUL
- NEW 3 5/8" 20GA M.S. 1 HR FIRE BARRIER  
W/ 5/8" FCGVB & SOUND INSUL
- EXST 1 HR FIRE BARRIER

**FLOOR PLAN**  
SCALE: 1/4"=1'-0"

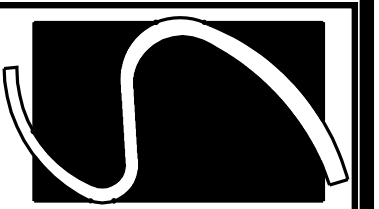
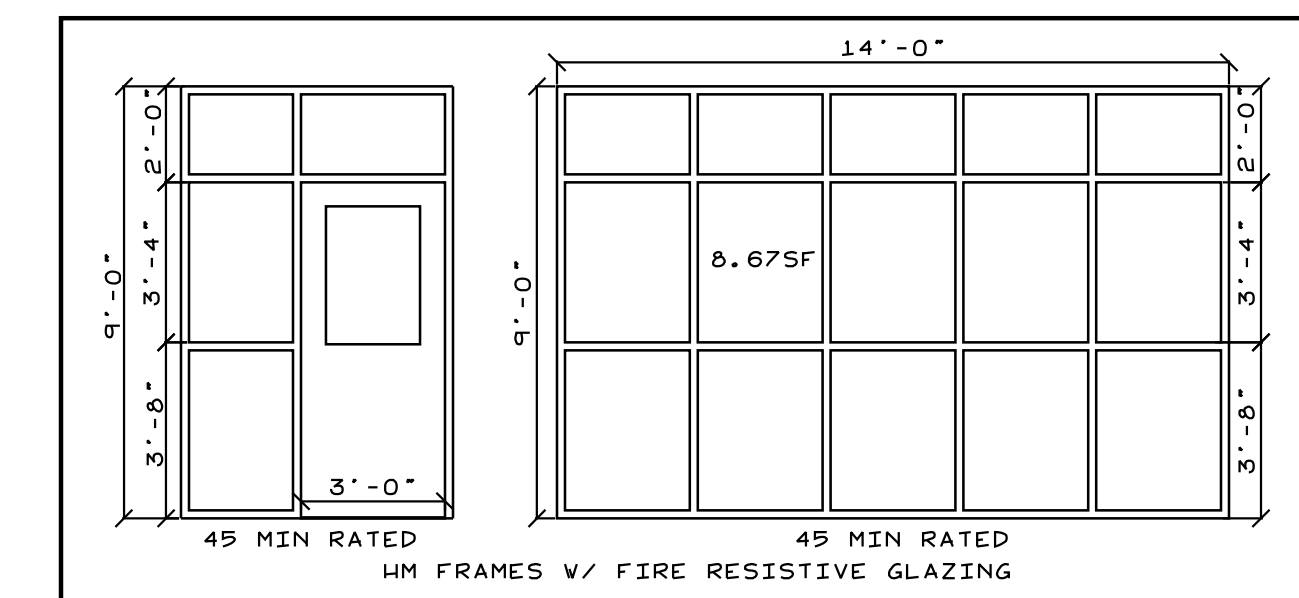
BUSINESS OCCUPANCY  
NO CHANGE IN OCCUPANCY



**AS BUILT FLOOR PLAN**  
SCALE: 1/8"=1'-0"

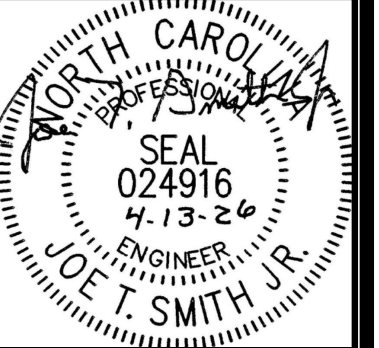


**DEMOLITION FLOOR PLAN**  
SCALE: 1/8"=1'-0"



**Smith Engineering  
and Design, P.A.**  
1103 Gracie Place - Suite A  
Goldsboro, N.C. 27534  
Phone: 919.736.2141  
Fax: 919.736.2142  
Corporate license # C-2241

This drawing is the property  
of Smith Engineering & Design,  
and may not be used or copied  
without SE&D's permission.



REVISIONS

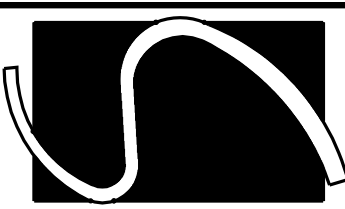
**PHARMACY CLASSROOM  
CAMPBELL UNIVERSITY  
BOUIES CREEK, N.C.**

JOB #26005  
DRAWN BY: JL  
DATE: 04/13/2026

**FLOOR PLAN  
AS BLT/DEMO**

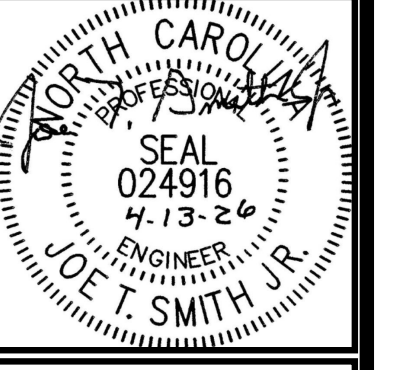
**G-3**

COPYRIGHT 2026 © SMITH ENGINEERING AND DESIGN, P.A. - ALL RIGHTS RESERVED



Smith Engineering  
and Design, P.A.  
1103 Gracie Place - Suite A  
Goldsboro, N.C. 27534  
Phone: 919.736.2141  
Fax: 919.736.2142  
Corporate license # C-2241

This drawing is the property  
of Smith Engineering & Design  
and may not be used or copied  
without SE&D's permission.



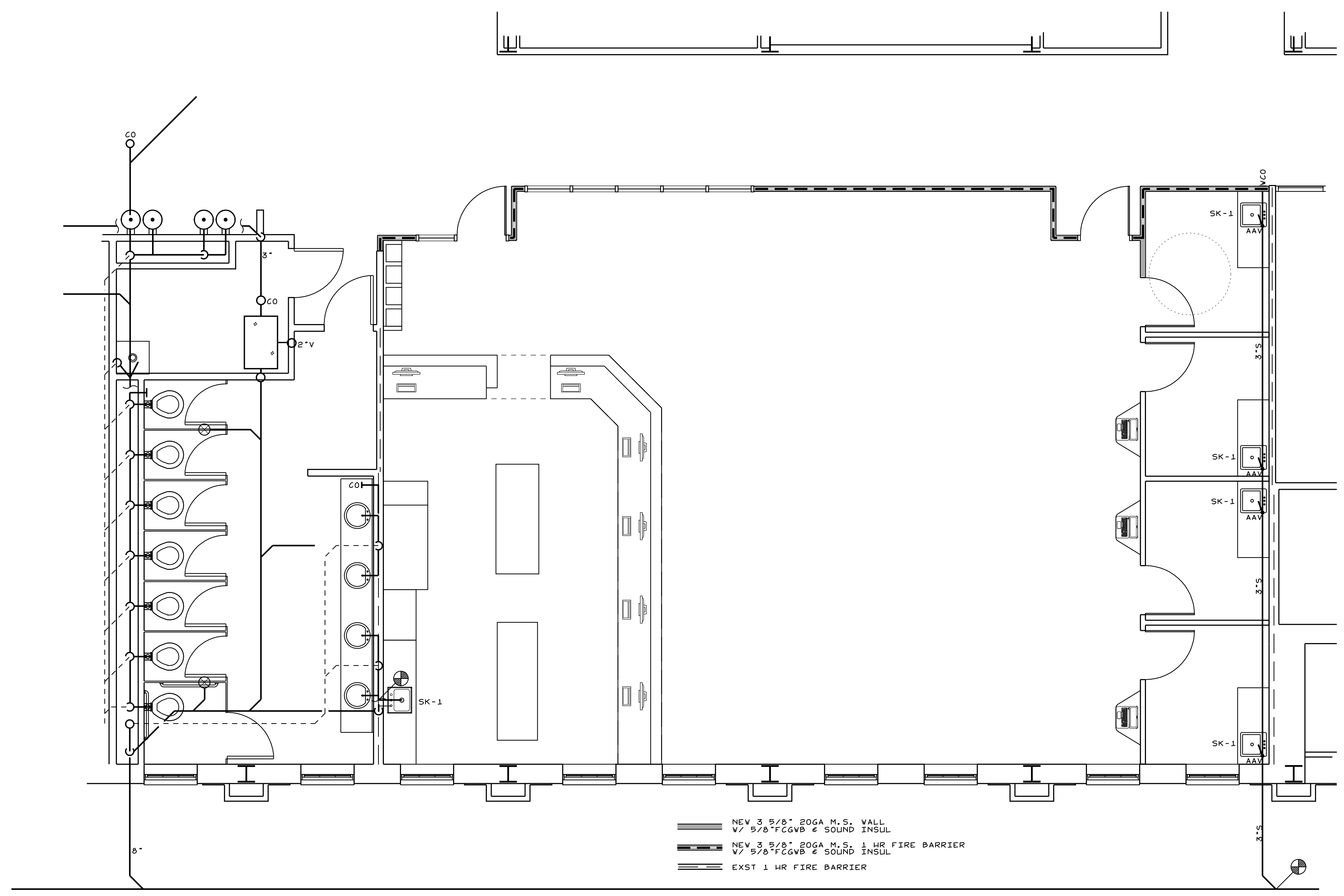
REVISIONS

PHARMACY CLASSROOM  
CAMPBELL UNIVERSITY  
BOUIES CREEK, N.C.

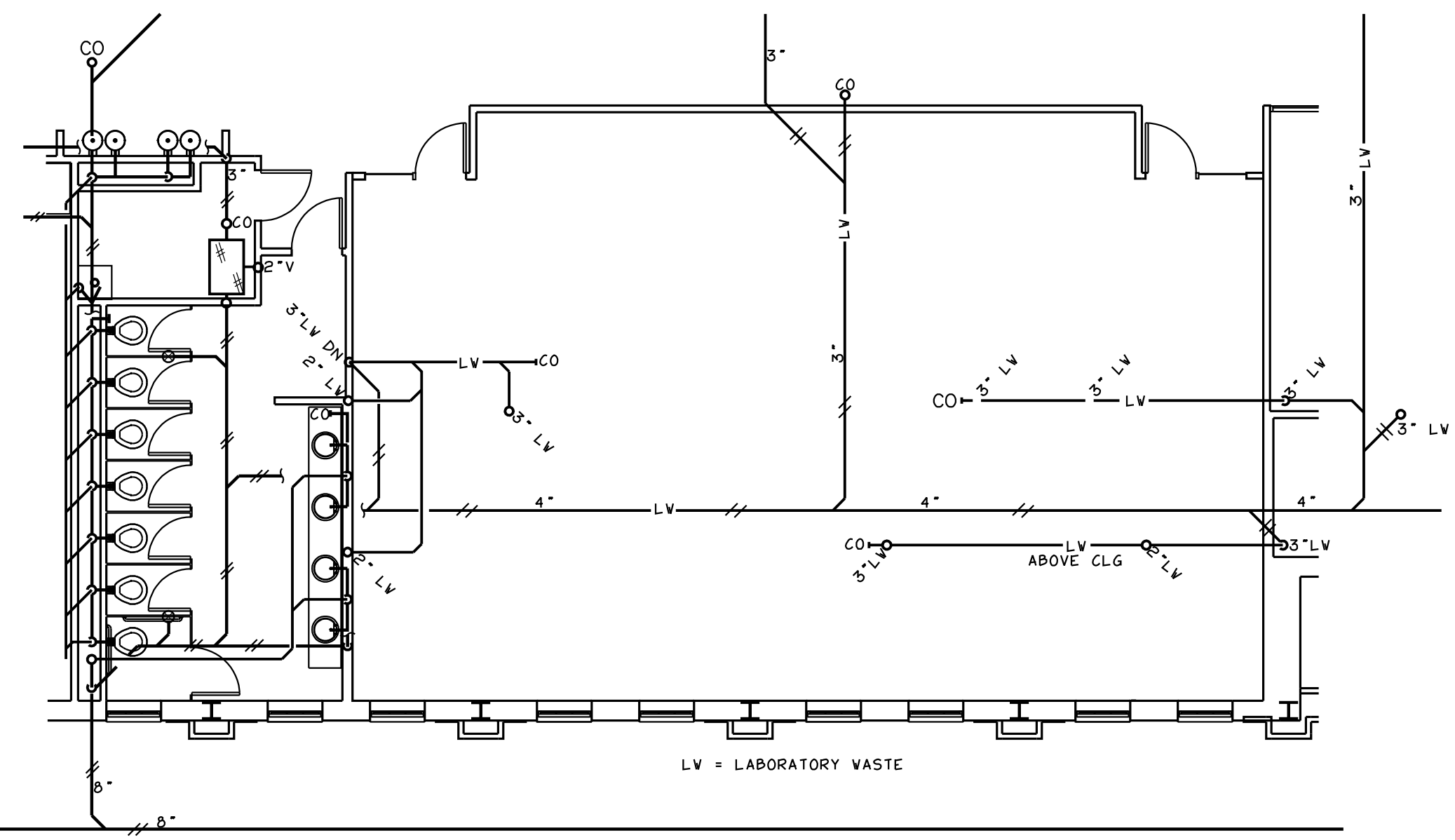
JOB #26005  
DRAWN BY: JL  
DATE: 04/13/2026

WASTE PLAN  
AS BLT/DEMO

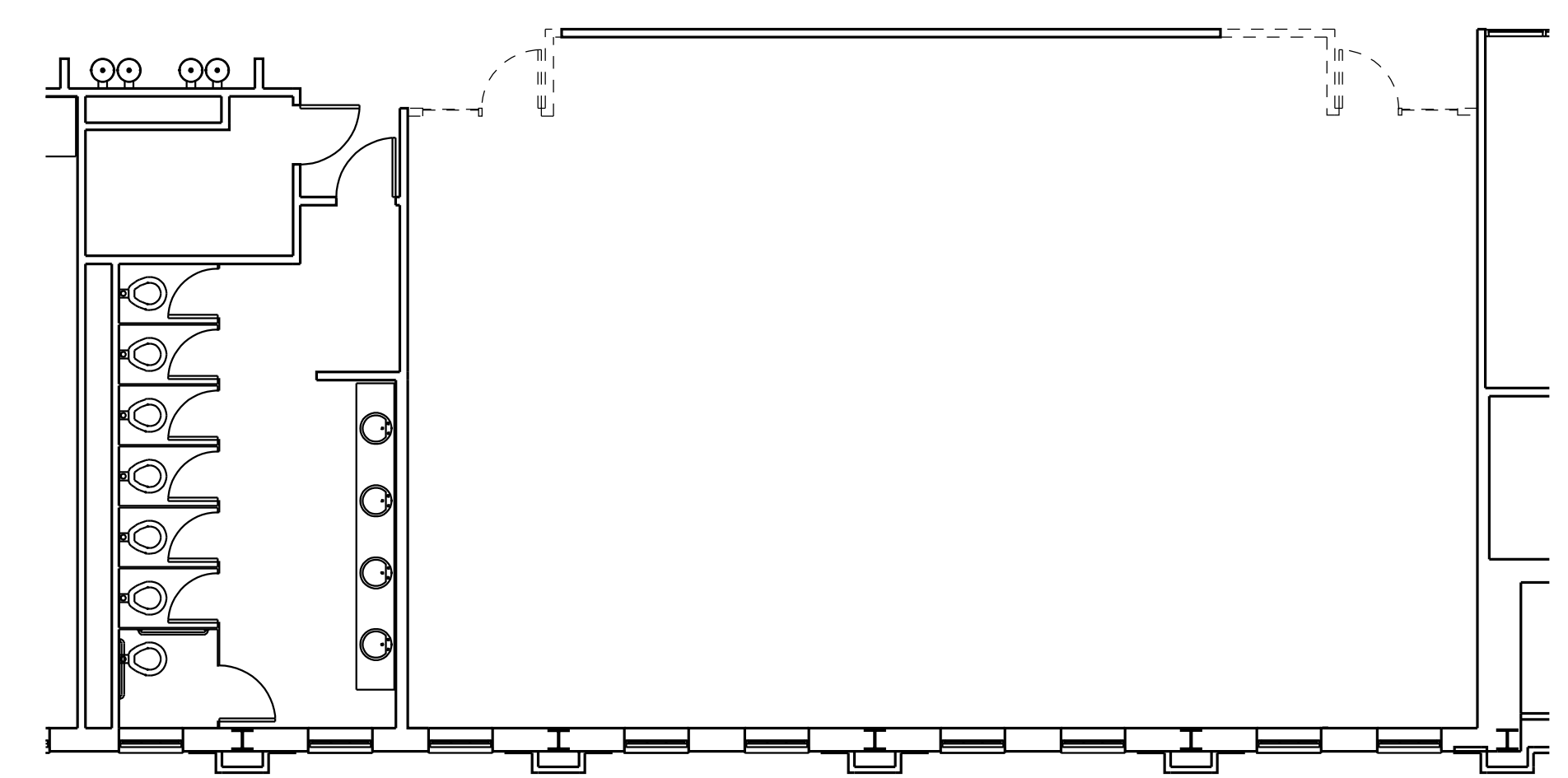
P-1



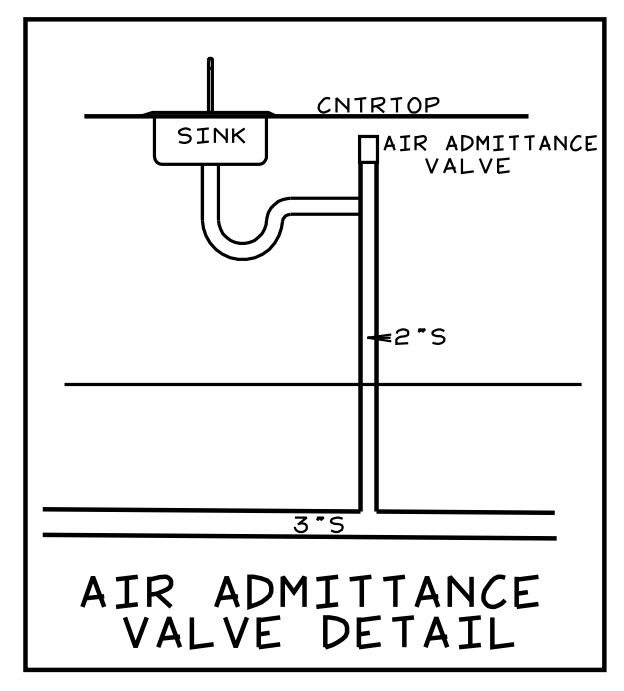
**WASTE PLAN**  
SCALE: 1/4"=1'-0"



**AS BUILT WASTE PLAN**  
SCALE: 1/8"=1'-0"

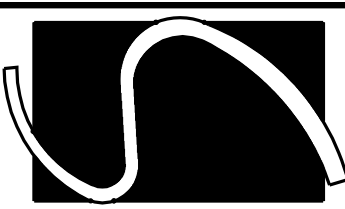


**DEMOLITION WASTE PLAN**  
SCALE: 1/8"=1'-0"



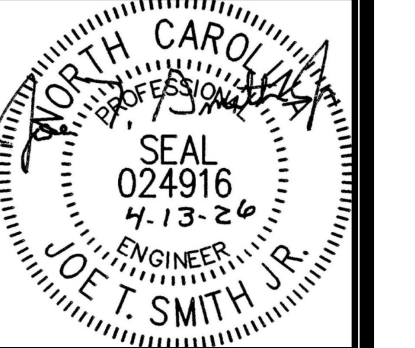
**AIR ADMITTANCE VALVE DETAIL**

COPYRIGHT 2026 © SMITH ENGINEERING AND DESIGN, P.A. - ALL RIGHTS RESERVED



Smith Engineering  
and Design, P.A.  
1103 Gracie Place - Suite A  
Goldsboro, N.C. 27534  
Phone: 919.736.2141  
Fax: 919.736.2142  
Corporate license # C-2241

This drawing is the property  
of Smith Engineering & Design  
and may not be used or copied  
without SE&D's permission.



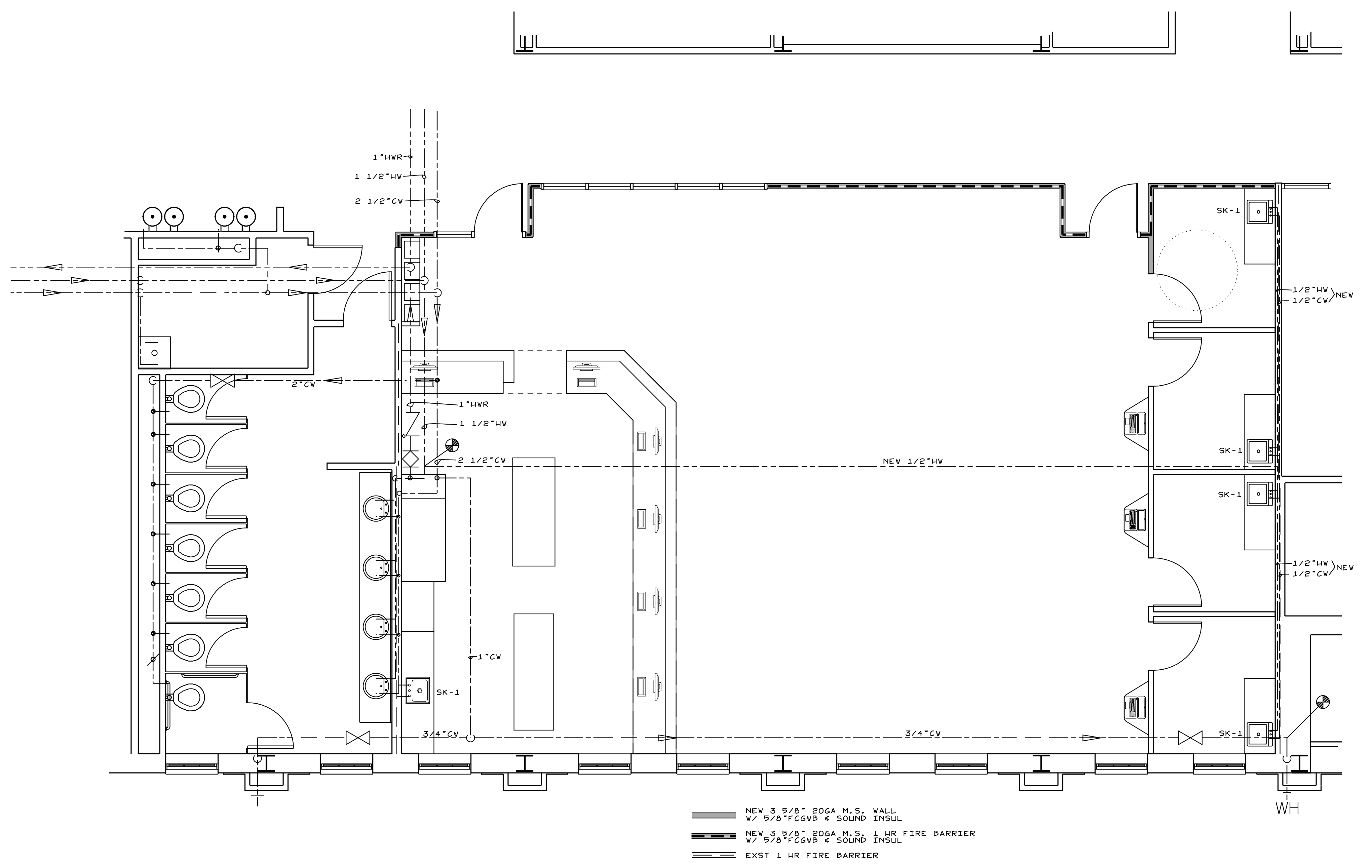
REVISIONS

PHARMACY CLASSROOM  
CAMPBELL UNIVERSITY  
BOUIES CREEK, N.C.

JOB #26005  
DRAWN BY: JL  
DATE: 04/13/2026

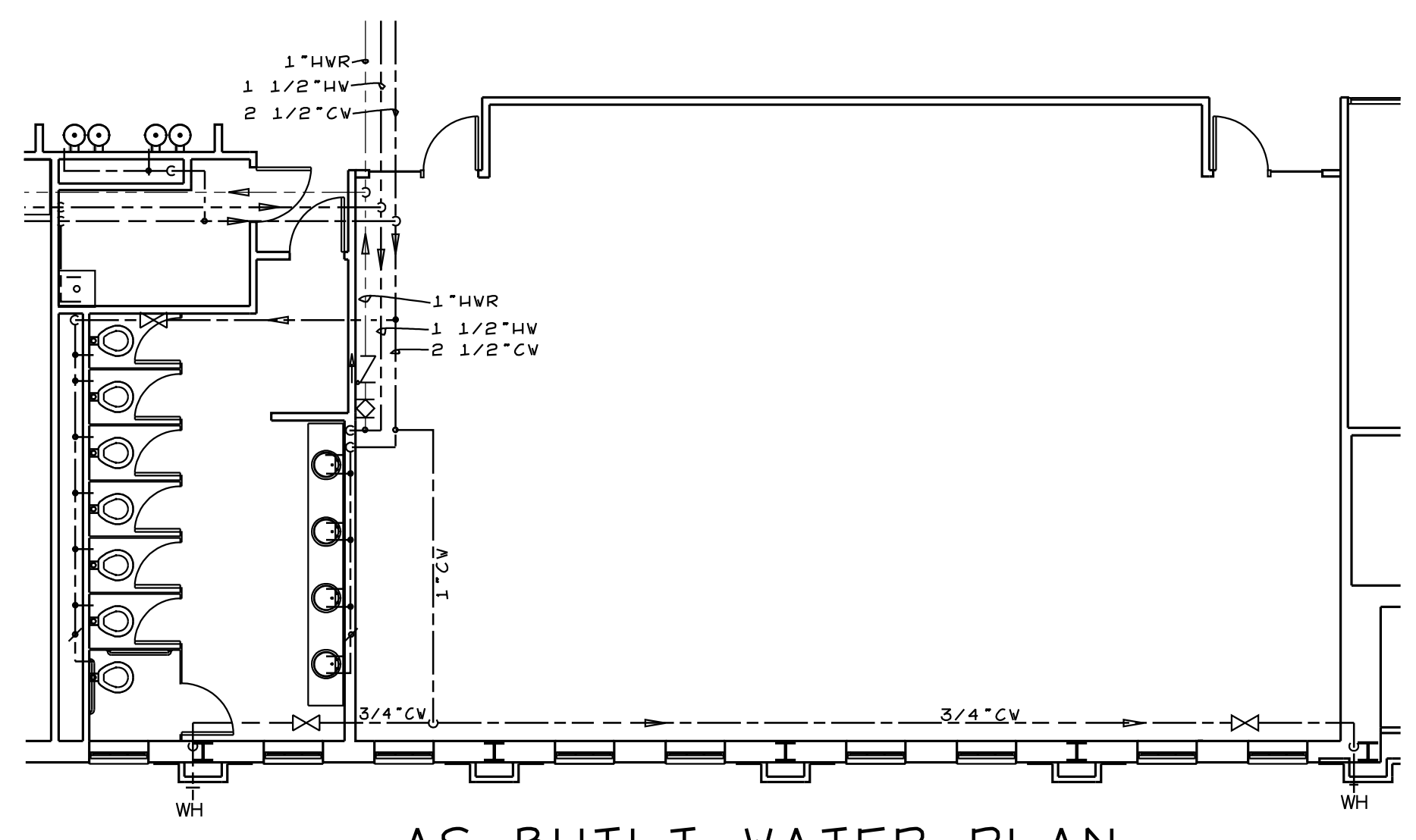
WATER PLAN  
AS BLT/DEMO

P-2

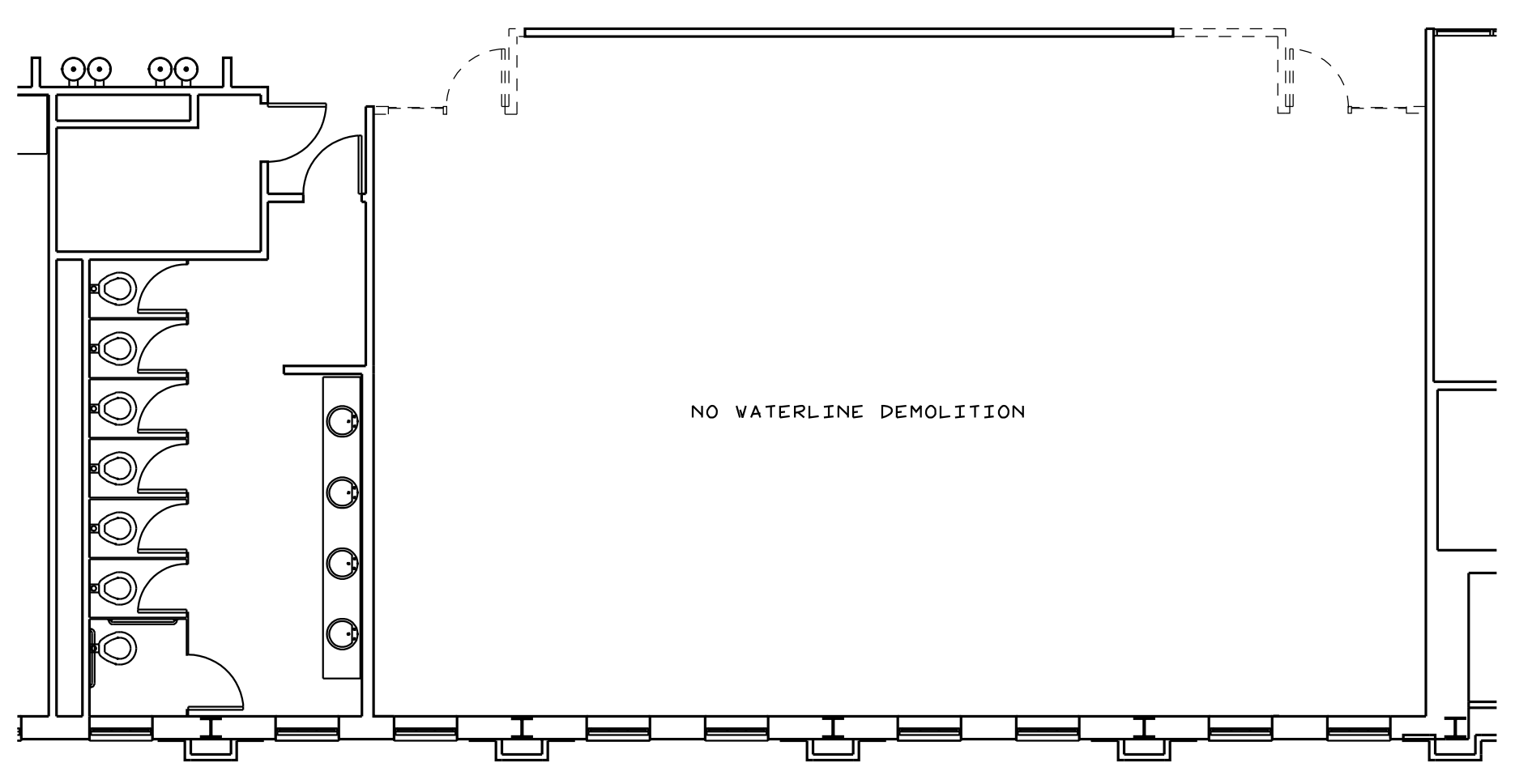


- NEW 3/8" 20GA M.S. VALL  
W/ 5/8" FCGVB & SOUND INSUL
- NEW 3/8" 20GA M.S. 1 HR FIRE BARRIER  
W/ 5/8" FCGVB & SOUND INSUL
- EXST 1 HR FIRE BARRIER

**WATER PLAN**  
SCALE: 1/4"=1'-0"



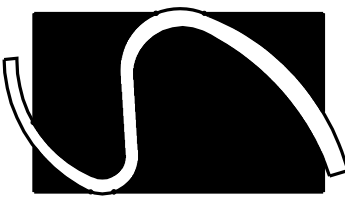
**AS BUILT WATER PLAN**  
SCALE: 1/8"=1'-0"



**DEMOLITION WATER PLAN**  
SCALE: 1/8"=1'-0"

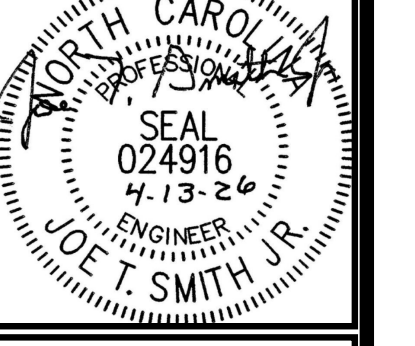
COPYRIGHT 2026 © SMITH ENGINEERING AND DESIGN, P.A. - ALL RIGHTS RESERVED





Smith Engineering  
and Design, P.A.  
1103 Gracie Place - Suite A  
Goldsboro, N.C. 27534  
Phone: 919.736.2141  
Fax: 919.736.2142  
Corporate license # C-2241

This drawing is the property  
of Smith Engineering & Design  
and may not be used or copied  
without SE&D's permission.



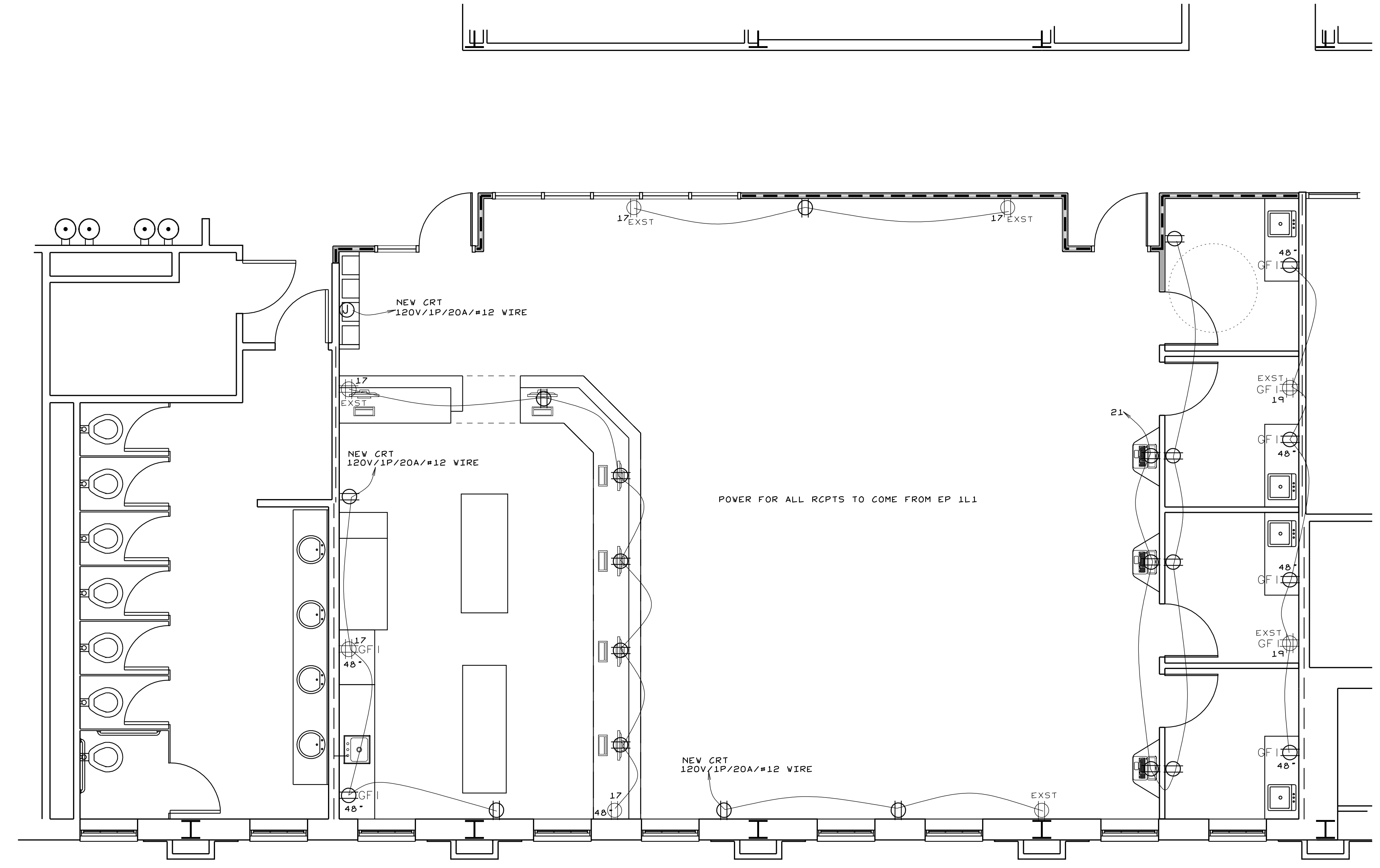
REVISIONS

PHARMACY CLASSROOM  
CAMPBELL UNIVERSITY  
BOUIES CREEK, N.C.

JOB #26005  
DRAWN BY: JL  
DATE: 04/13/2026

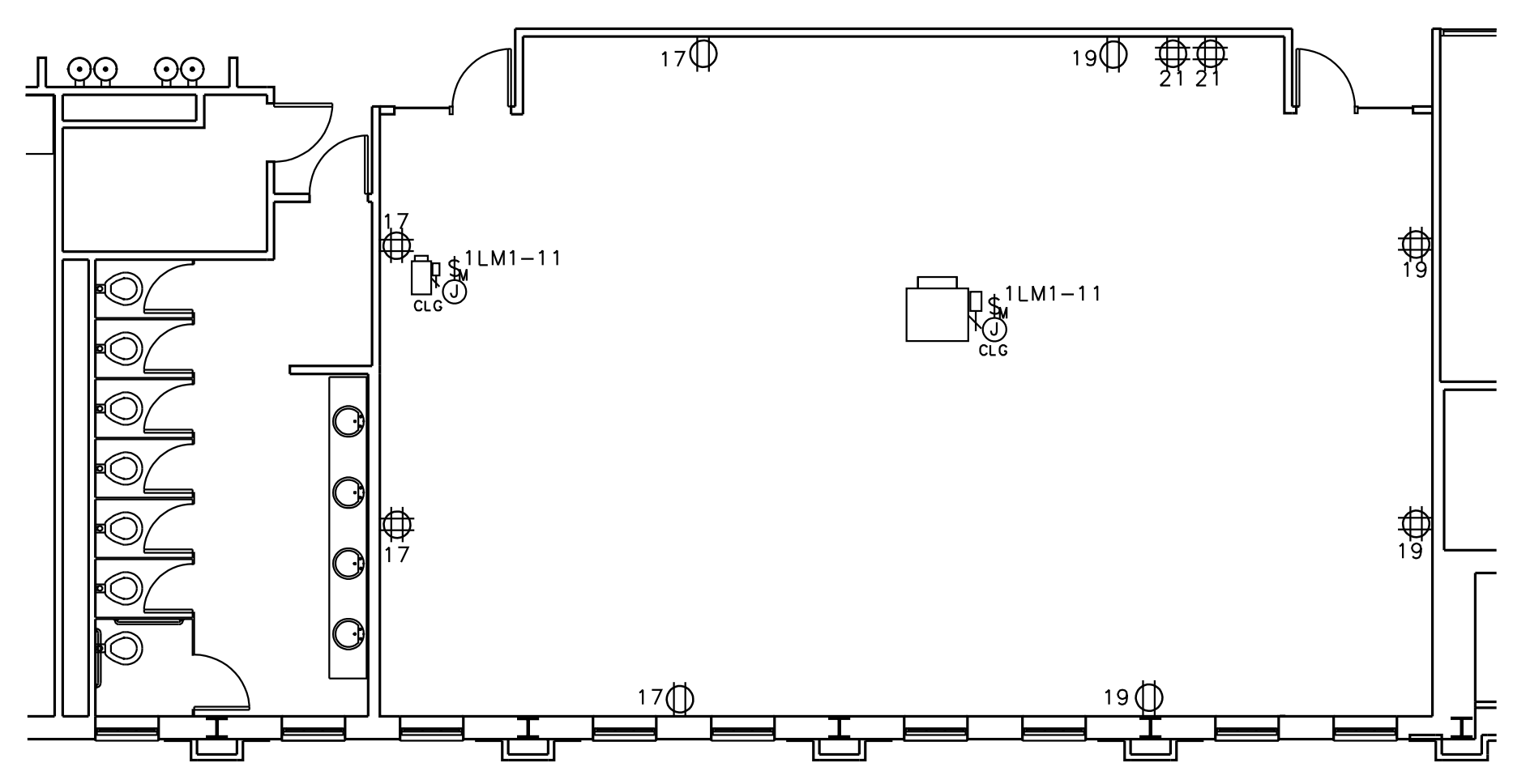
POWER PLAN  
AS BLT/DEMO

E-1

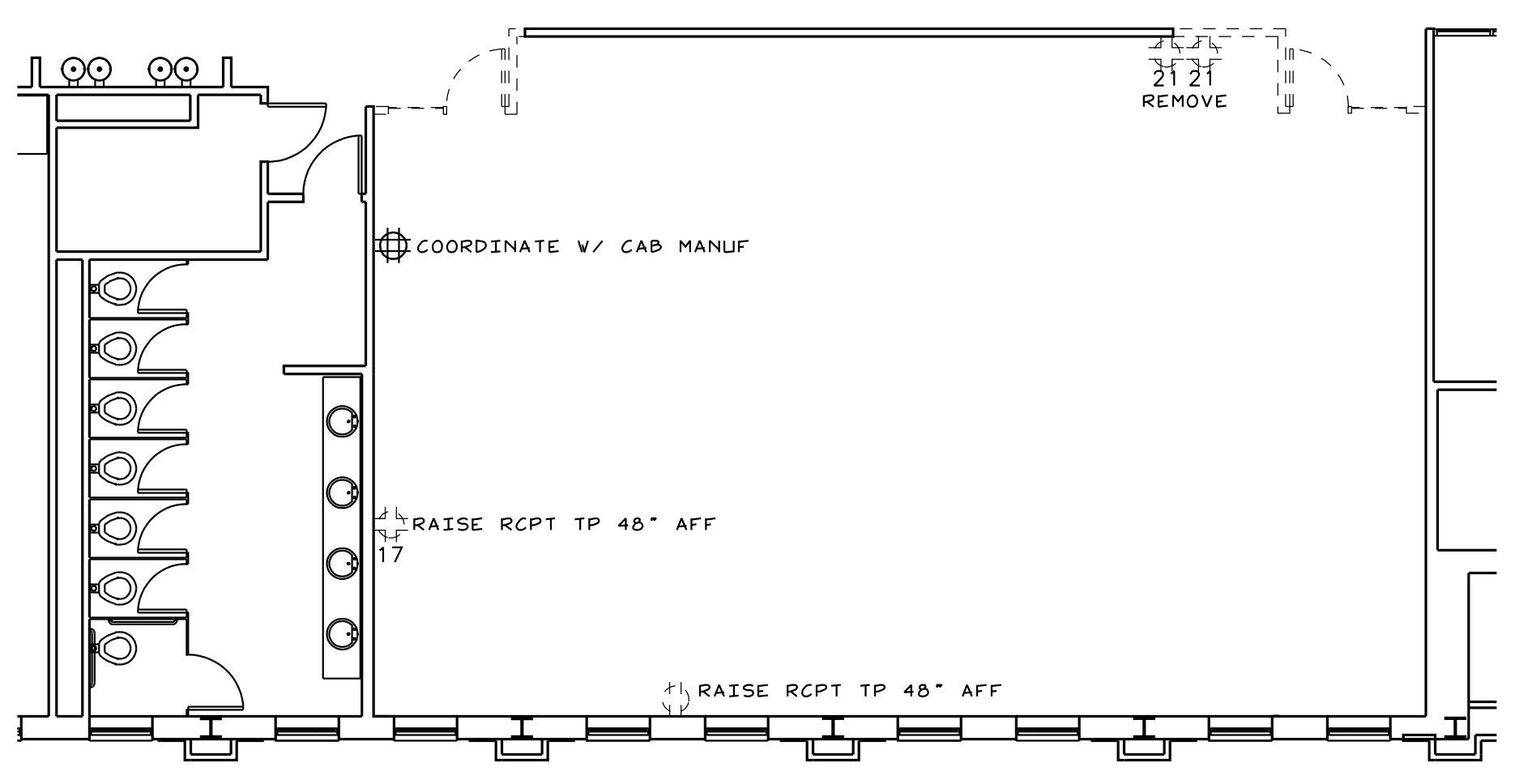


- NEW 3/8" 20GA M.S. WALL  
W/ 5/8" FCGVB & SOUND INSUL
- NEW 3/8" 20GA M.S. 1 HR FIRE BARRIER  
W/ 5/8" FCGVB & SOUND INSUL
- EXST 1 HR FIRE BARRIER

**POWER PLAN**  
SCALE: 1/4"=1'-0"

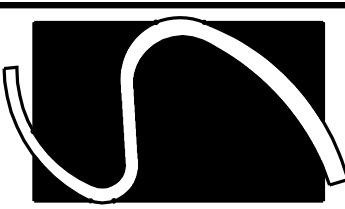


**AS BUILT POWER PLAN**  
SCALE: 1/8"=1'-0"



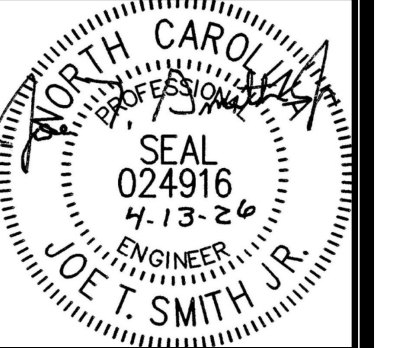
**DEMOLITION POWER PLAN**  
SCALE: 1/8"=1'-0"

COPYRIGHT 2026 © SMITH ENGINEERING AND DESIGN, P.A. - ALL RIGHTS RESERVED



Smith Engineering  
and Design, P.A.  
1103 Gracie Place - Suite A  
Goldsboro, N.C. 27534  
Phone: 919.736.2141  
Fax: 919.736.2142  
Corporate license # C-2241

This drawing is the property  
of Smith Engineering & Design  
and may not be used or copied  
without SE&D's permission.



REVISIONS

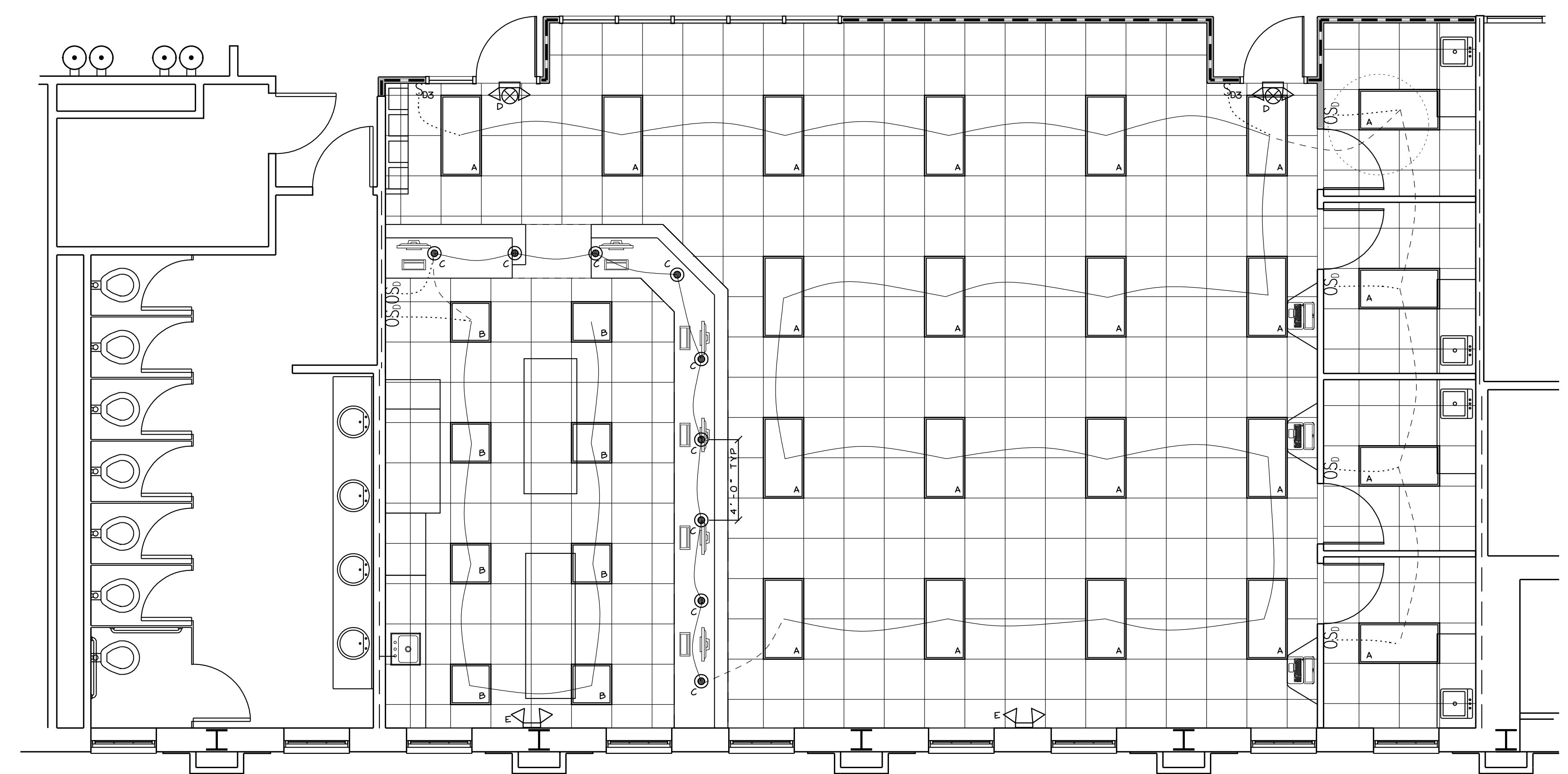
PHARMACY CLASSROOM  
CAMPBELL UNIVERSITY  
BOUIES CREEK, N.C.

JOB #26005  
DRAWN BY: JL  
DATE: 04/13/2026

LIGHTING PLAN  
AS BLT/DEMO

E-2

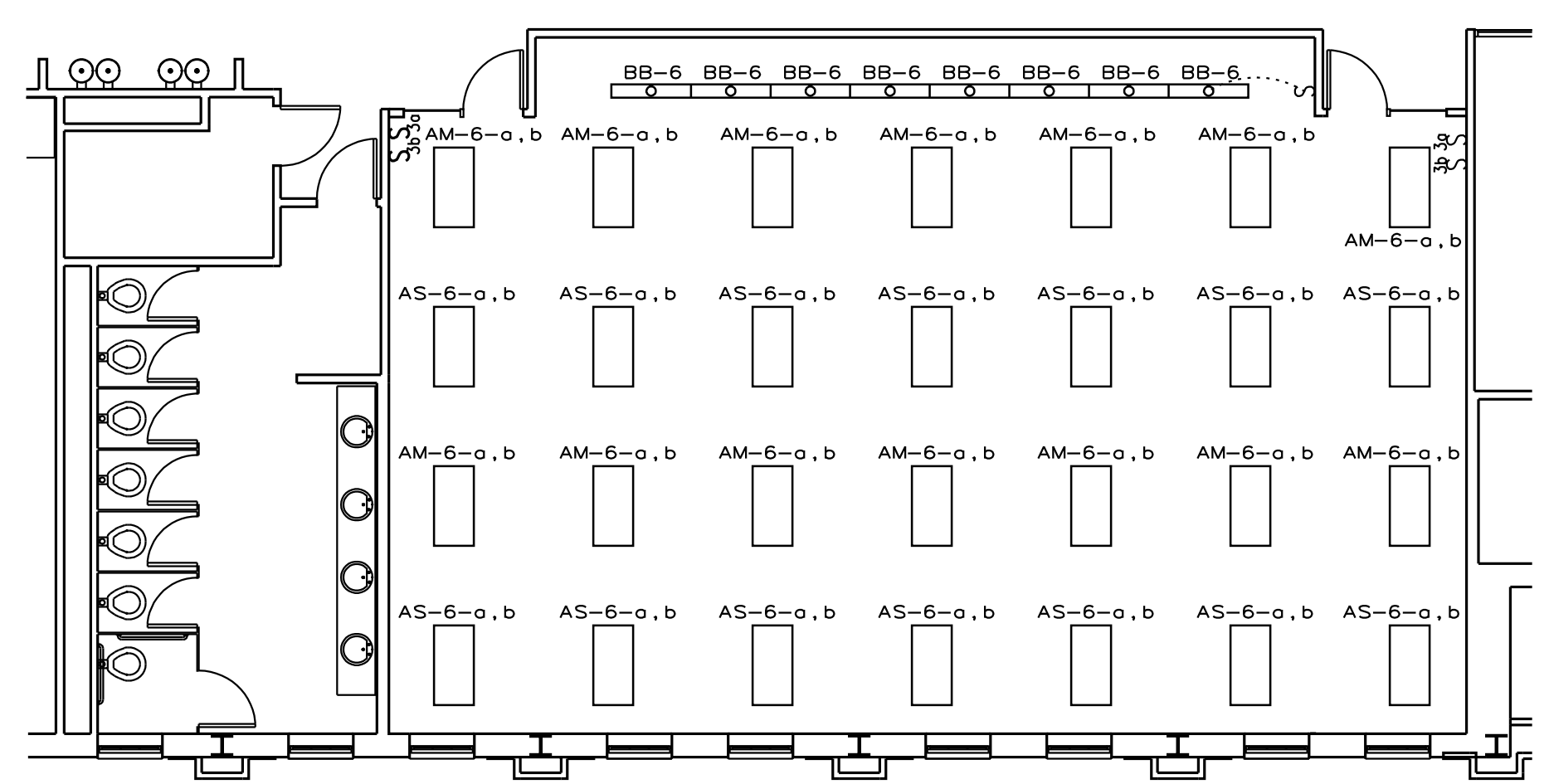
LIGHTING FIXTURE SCHEDULE				
TYPE	DESCRIPTION	MANUFACTURER	CATALOG NO.	FIXTURE WATTAGE
A	2X4 FLAT PANEL LED	LSI	SFP24 LEWD FS UNV DIM	45W
B	2X2 FLAT PANEL LED	LSI	SFP22 LEWD FS UNV DIM	40W
C	8" CANLESS LED CLG LGT	JUNO	VF8 SWV5 90CRI MW	19W
D	EMER/EX LGT	LSI	LBC R 1F VH SD2	3W
E	EMER LGT	LSI	HEL HPV VH SD2	11W



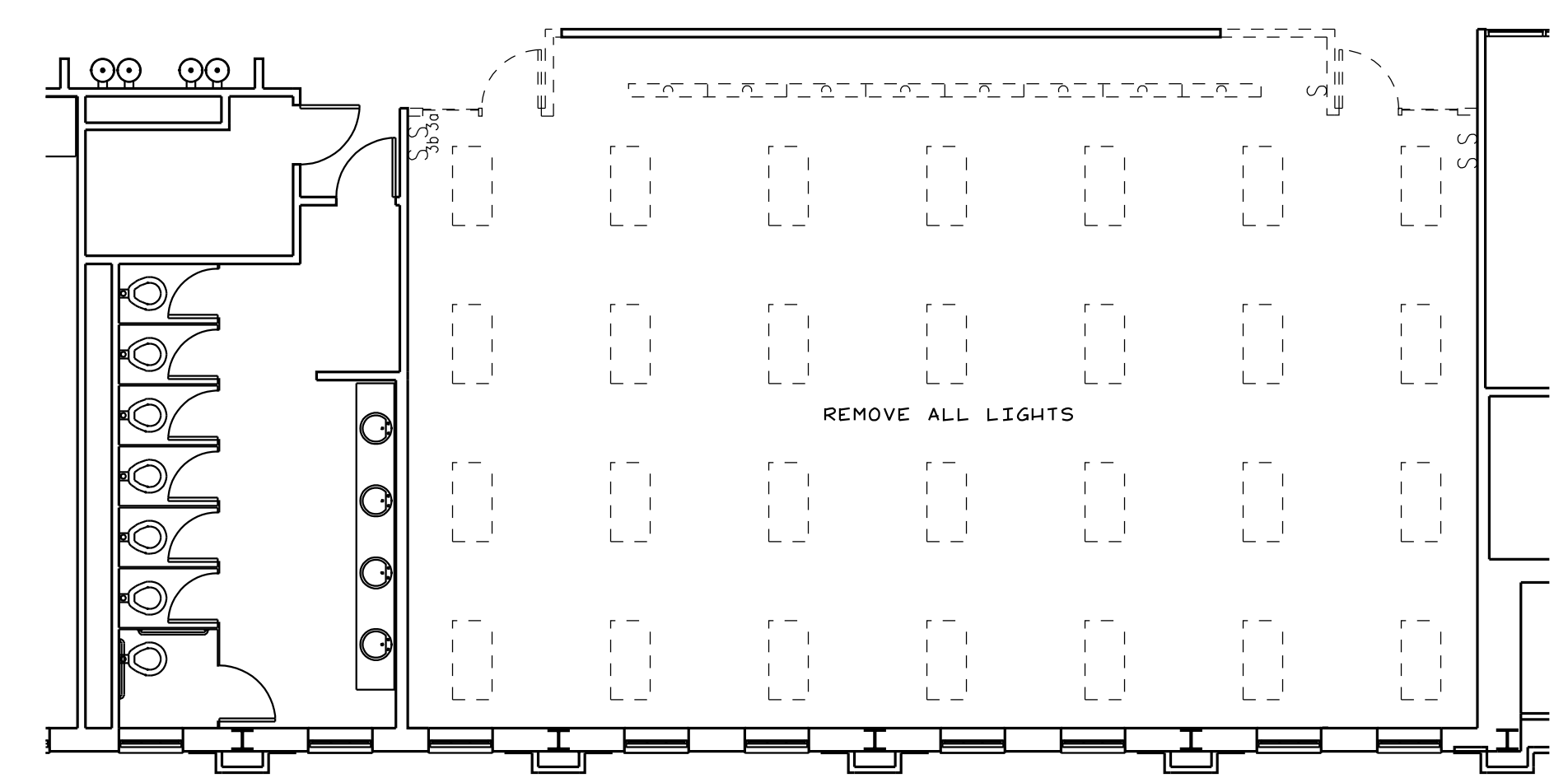
- NEW 3 5/8" 20GA M.S. WALL  
W/ 5/8" FCGVB & SOUND INSUL
- NEW 3 5/8" 20GA M.S. 1 HR FIRE BARRIER  
W/ 5/8" FCGVB & SOUND INSUL
- EXST 1 HR FIRE BARRIER

TIE LIGHTS TO EXISTING CIRCUIT  
TOTAL WATTAGE 1480

**LIGHTING PLAN**  
SCALE: 1/4"=1'-0"



**AS BUILT LIGHTING PLAN**  
SCALE: 1/8"=1'-0"



**DEMOLITION LIGHTING PLAN**  
SCALE: 1/8"=1'-0"