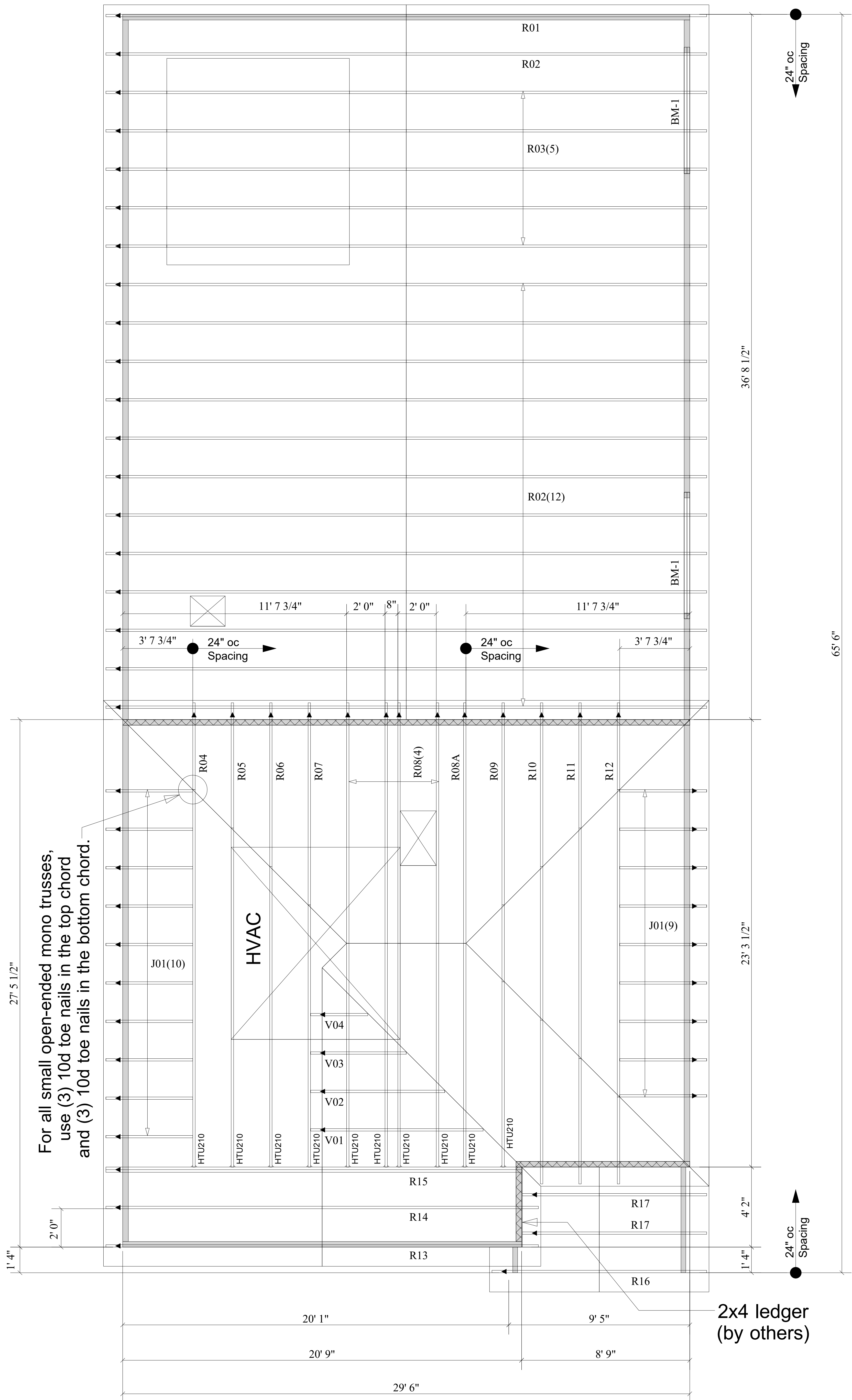


WARNING! Long span trusses, 60' or greater in length, require extreme care and experience for proper and safe handling and installation. For general handling and installation guidance, see the "Guide to Good Practice for Handling, Installing, Restraining & Bracing of Metal Plate Connected Wood Trusses" ("BCS"), JOINTLY PRODUCED BY SBCA and TPI. For project specific guidance, consult with a registered design professional. ATLANTIC assumes no responsibility for the handling, installation or bracing of trusses.



For all small open-ended mono trusses, use (3) 10d toe nails in the top chord and (3) 10d toe nails in the bottom chord.

Products				
PlotID	Length	Product	Plies	Net Qty
BM-1	8' 0"	1-3/4" x 9-1/2" VERSA-LAM® LVL 2.1E 3100 SP	2	4

Truss Connector Total List		
Manuf	Product	Qty
Simpson	HTU210	10

▲ = LEFT END OF TRUSS

FOR PERMIT



Moncks Corner/Easley, SC (800) 475-3999
Sparta, NC (336) 372-2226

REVISIONS:

Client: **MATTAMY HOMES-RALEIGH**

Job: **LOT 9 CARDINAL LANDING**

Plan Information:
BROOKSTONE-FC

NOT TO SCALE

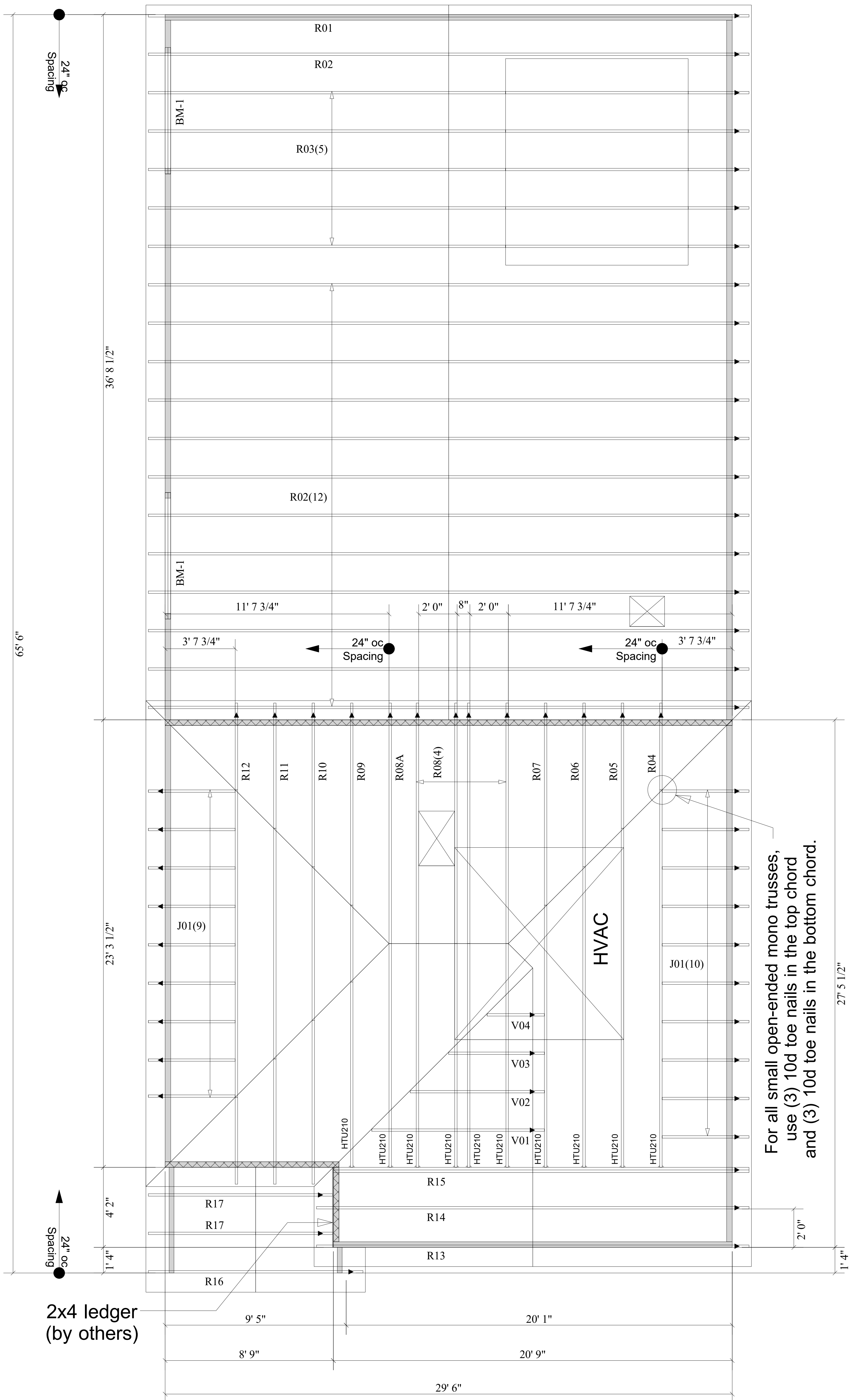
Date: 03-26-2026

Drawn By: **MBB**

Job #: **26-3106-R01** Sales Rep: **KYLE GIBSON**
Phone: **843-729-3249**

ROOF

WARNING! Long span trusses, 60' or greater in length, require extreme care and experience for proper and safe handling and installation. For general handling and installation guidance, see the "Guide to Good Practice for Handling, Installing, Restraining & Bracing of Metal Plate Connected Wood Trusses" ("BCS"), "JOINTLY PRODUCED BY SBCA and TPI. For project specific guidance, consult with a registered design professional. ATLANTIC assumes no responsibility for the handling, installation or bracing of trusses.



For all small open-ended mono trusses, use (3) 10d toe nails in the top chord and (3) 10d toe nails in the bottom chord.

Truss Connector Total List			Products				
Qty	Product	Manuf	Net Qty	Plies	Product	Length	PlotID
10	HTU210	Simpson	4	2	1-3/4" x 9-1/2" VERSA-LAM@ LVL 2.1E 3100 SP	8' 0"	BM-1

▲ = LEFT END OF TRUSS

FOR PERMIT



Moncks Corner/Easley, SC (800) 475-3999
Sparta, NC (336) 372-2226

REVISIONS:

Client:	MATTAMY HOMES-RALEIGH		
Job:	LOT 9 CARDINAL LANDING		
Plan Information:	BROOKSTONE-FC		
NOT TO SCALE	Date:	03-26-2026	
Drawn By:	Job #:	Sales Rep: KYLE GIBSON	
MBB	26-3106-R01	Phone: 843-729-3249	

ROOF