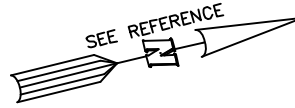


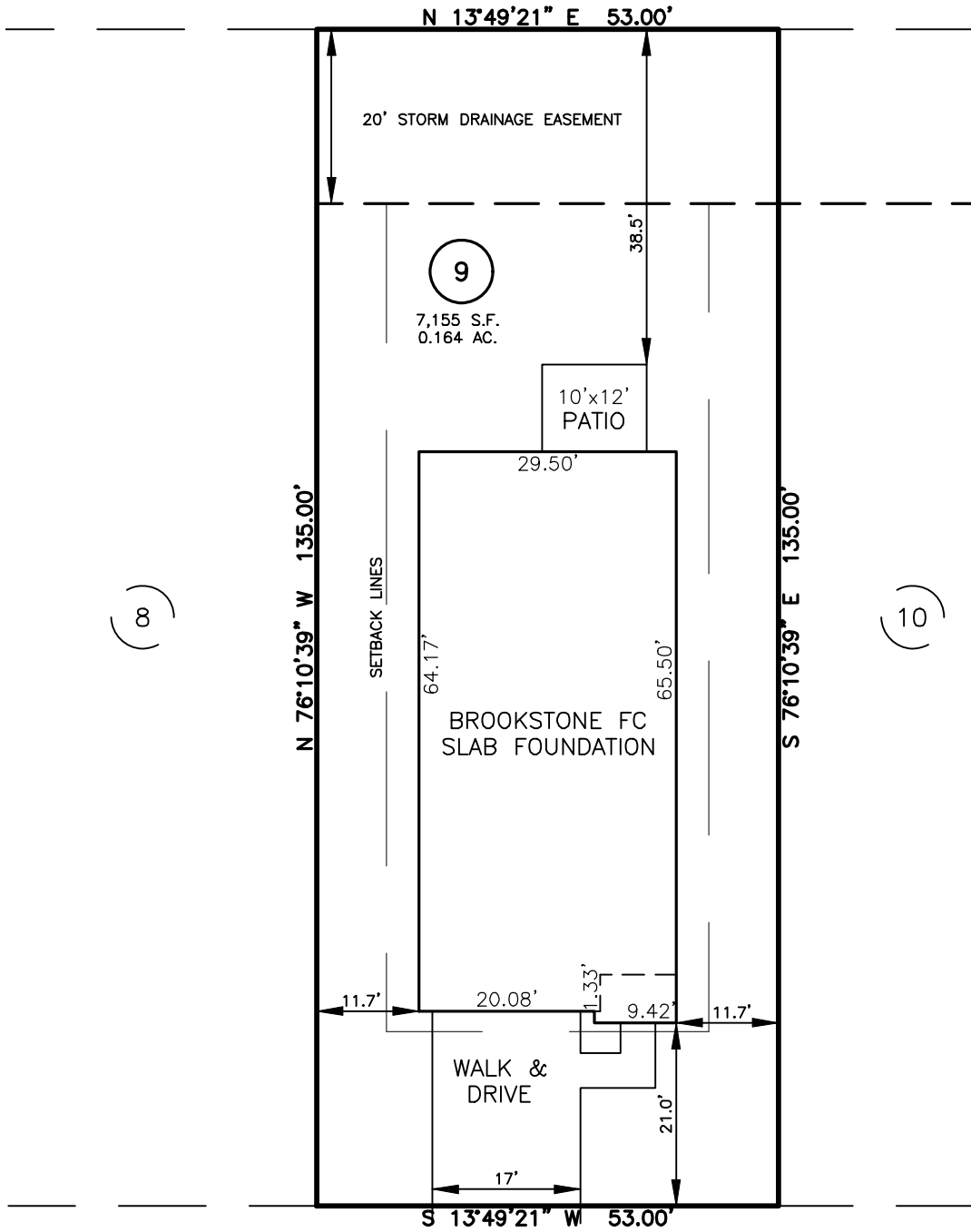
HOUSE FIT FOR
MATTAMY HOMES
 XXX KINGFISHER PLACE
 LOT 09, CARDINAL LANDING PHASE 1
 GROVE TOWNSHIP, HARNETT COUNTY, NORTH CAROLINA

(7)



LEGEND

- AIR CONDITIONER
- BACK OF CURB
- BACK FLOW PREVENTER
- CLEANOUT
- CURB INLET
- DRILL HOLE SET
- EXISTING CONCRETE MONUMENT
- EXISTING DRILL HOLE
- EXISTING IRON STAKE
- EXISTING IRON PIPE
- ELECTRIC METER
- EXISTING PK NAIL
- ELECTRIC STUB
- FLARED END SECTION
- FIRE HYDRANT
- FIBER OPTIC PEDESTAL
- GAS METER
- GUY
- INVERT
- IRON PIPE SET
- IRON ROD SET
- LIGHT POLE
- MAGNETIC NAIL SET
- MANHOLE SANITARY SEWER
- MANHOLE STORM SEWER
- OVERHEAD WIRES
- PK NAIL SET
- POINT NOT SET
- RAIL ROAD SPIKE
- TELEPHONE PEDESTAL
- TRANSFORMER
- CABLE TV PEDESTAL
- UTILITY POLE
- WATER METER
- WATER VALVE
- YARD INLET
- FIELD MEASUREMENT
- REVISION TRIANGLE



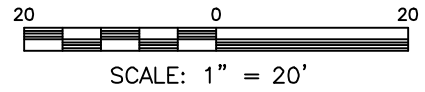
SETBACK INFO

- FRONT: 20'
- REAR: 20'
- SIDES: 8'
- CORNER SIDE: 12'

IMPERVIOUS SURFACES	S.F.
HOUSE	1,910
WALK & DRIVE	430
PATIO	120
TOTAL	2,460

KINGFISHER PLACE
 60' PUBLIC R/W

REFERENCES:
 NOT RECORDED
 (SEE NOTE 1)



FOR REPRESENTATIVE PURPOSES ONLY
 NOT FOR PERMITTING, RECORDATION,
 CONVEYANCE OR SALES

NOTES

1. PROPERTY LINES, BEARINGS & DISTANCES, EASEMENTS AND LOT AREA DRAWN PER ROBINSON & PLANTE, P.C. LAND SURVYING, ENTITLED: CARDINAL LANDING PHASE 1 PRELIMINARY PLAT. DATED 07-07-2025.

HOUSE FIT
 ONLY

DATE: MAR. 09, 2026

F.B. _____

RWK, PA

ENGINEERING ~ SURVEYING

CORPORATE LICENSE: C-1771
 101 W. MAIN ST., SUITE 202
 GARNER, NC 27529
 PHONE (919) 779-4854
 FAX (919) 779-4056