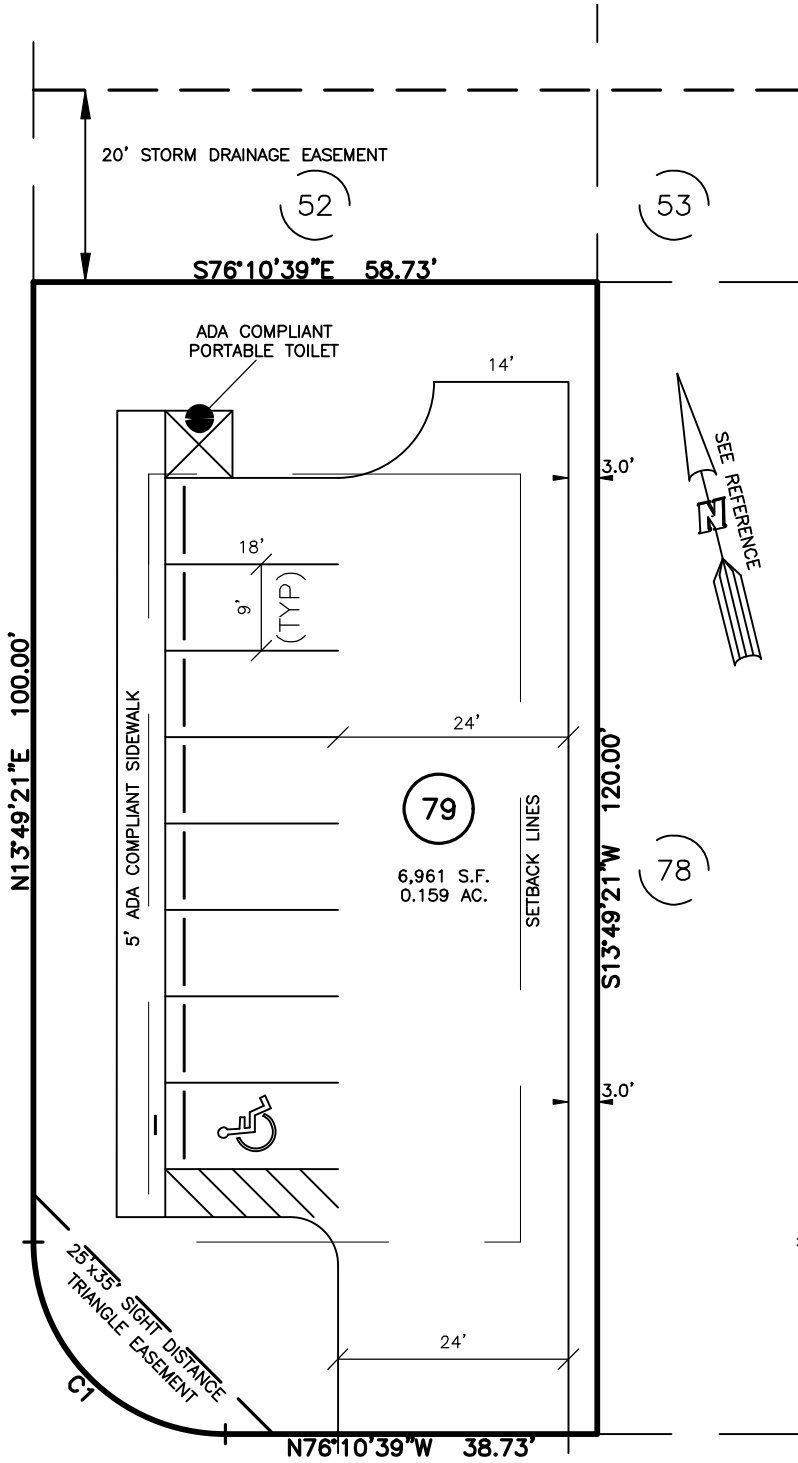


HOUSE FIT FOR
MATTAMY HOMES
 XXX HAWK CREST COURT
 LOT 79, CARDINAL LANDING, PHASE 1
 GROVE TOWNSHIP, HARNETT COUNTY, NORTH CAROLINA

LEGEND

- ▲ AIR CONDITIONER
- ⊖ BACK of CURB
- ⊖ BFP BACK FLOW PREVENTER
- CLEANOUT
- ⊖ CURB INLET
- DHS DRILL HOLE SET
- ECM EXISTING CONCRETE MONUMENT
- EDH EXISTING DRILL HOLE
- EIS EXISTING IRON STAKE
- EIP EXISTING IRON PIPE
- EM ELECTRIC METER
- EPK EXISTING PK NAIL
- ES ELECTRIC STUB
- ⊖ FLARED END SECTION
- ⊖ FIRE HYDRANT
- ⊖ FIBER OPTIC PEDESTAL
- ⊖ GM GAS METER
- ⊖ GUY
- ⊖ INV. INVERT
- ⊖ IPS IRON PIPE SET
- ⊖ IRS IRON ROD SET
- ⊖ LIGHT POLE
- MNS MAGNETIC NAIL SET
- ⊖ MANHOLE SANITARY SEWER
- ⊖ MANHOLE STORM SEWER
- OHV OVERHEAD WIRES
- PKS PK NAIL SET
- PNS POINT NOT SET
- RRS RAIL ROAD SPIKE
- ⊖ TELEPHONE PEDESTAL
- ⊖ TRANSFORMER
- ⊖ CABLE TV PEDESTAL
- ⊖ UTILITY POLE
- ⊖ WATER METER
- ⊖ WATER VALVE
- ⊖ YARD INLET
- () FIELD MEASUREMENT
- ▲ REVISION TRIANGLE

KINGFISHER PLACE
60' PUBLIC R/W



IMPERVIOUS SURFACES	S.F.
ADA PARKING	4,000
SIDEWALK	420
TOTAL	4,420

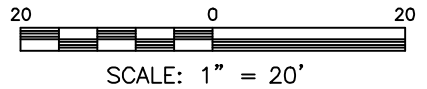
SETBACK INFO

FRONT: 20'
 REAR: 20'
 SIDES: 8'
 CORNER SIDE: 12'

REFERENCES:
 NOT RECORDED
 (SEE NOTE 1)

HAWK CREST COURT
60' PUBLIC R/W

CURVE	RADIUS	ARC	DELTA	CHORD BRG	CHORD
C1	20.00'	31.42'	90°00'00"	N31°10'39"W	28.28'



FOR REPRESENTATIVE PURPOSES ONLY
 NOT FOR PERMITTING, RECORDATION,
 CONVEYANCE OR SALES

NOTES

1. PROPERTY LINES, BEARINGS & DISTANCES, EASEMENTS AND LOT AREA ARE DRAWN PER ACAD-C22008 CARDINAL LANDING LOT LINES.DWG PROVIDED BY MATTAMY HOMES RECEIVED ON 3-9-2026

HOUSE FIT
ONLY

DATE: MAR. 25, 2026

F.B. _____

RWK, PA
ENGINEERING ~ SURVEYING
 CORPORATE LICENSE: C-1771
 101 W. MAIN ST., SUITE 202
 GARNER, NC 27529
 PHONE (919) 779-4854
 FAX (919) 779-4056