

CONFORMED SET

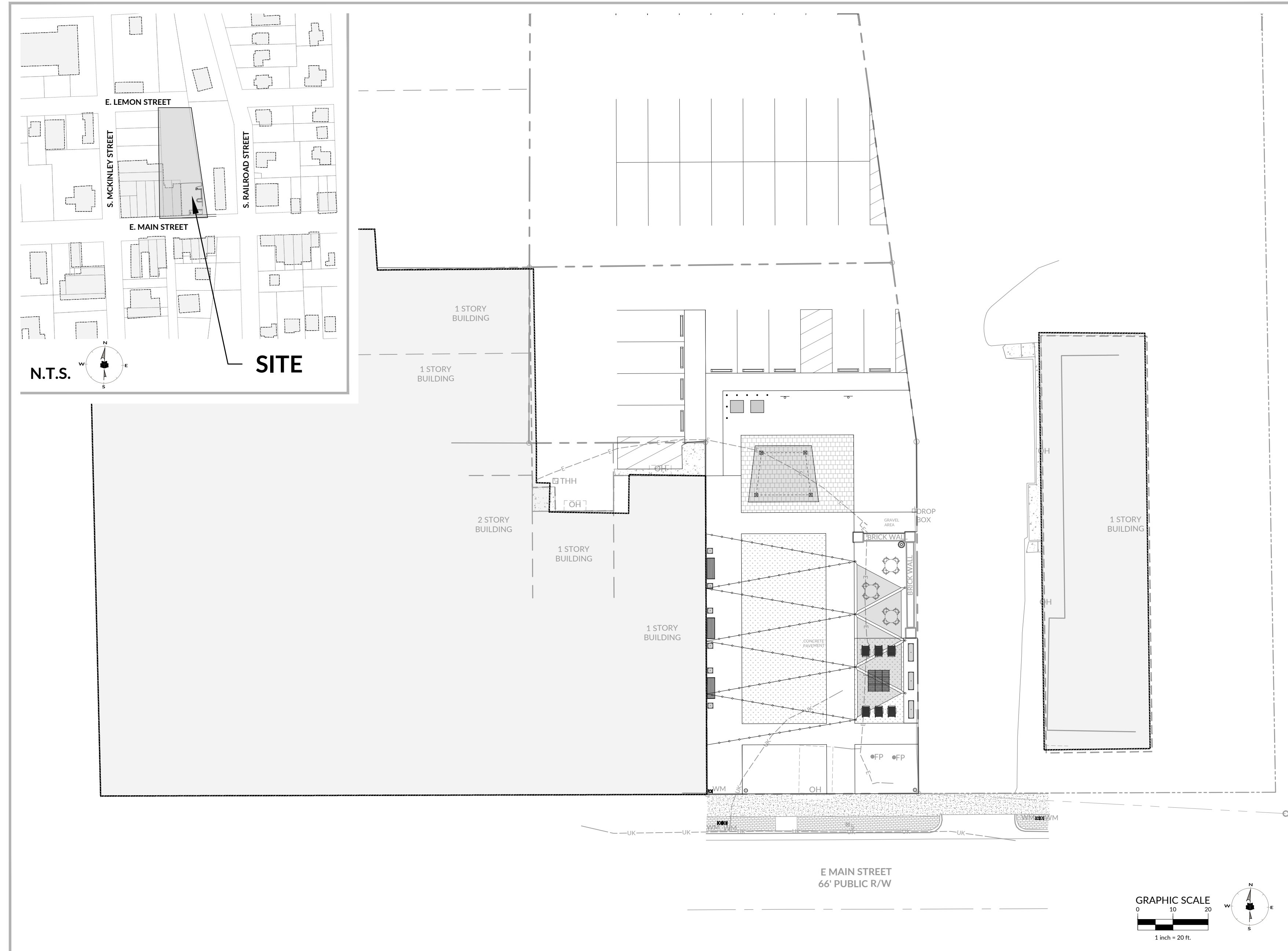
COATS DOWNTOWN SQUARE

29 E. MAIN STREET | COATS, NC 27521 | HARNETT COUNTY

JANUARY 30, 2026

GENERAL NOTES:

1. THE CONTRACTOR SHALL BE HELD RESPONSIBLE FOR HAVING VISITED THE SITE AND HAVING FAMILIARIZED THEMSELVES WITH THE EXISTING CONDITIONS PRIOR TO SUBMITTING A BID AND/OR COMMENCING WORK.
2. ANY DISCREPANCIES, INCONSISTENCIES OR AMBIGUITIES FOUND BETWEEN THE DRAWINGS, SPECIFICATIONS, AND SITE CONDITIONS SHALL BE IMMEDIATELY REPORTED TO THE ENGINEER IN WRITING AND PRIOR TO BIDDING IF APPLICABLE. WORK DONE BY THE CONTRACTOR AFTER THE DISCOVERY OF SUCH DISCREPANCIES, INCONSISTENCIES, OR AMBIGUITIES WITHOUT WRITTEN CLARIFICATION FROM THE ENGINEER AND APPROVAL BY OWNER SHALL BE DONE AT THE CONTRACTOR'S RISK AND EXPENSE.
3. THE CONTRACTOR SHALL BE SOLELY RESPONSIBLE FOR ALL JOBSITE SAFETY DURING ALL PHASES OF CONSTRUCTION. ALL WORK SHALL COMPLY WITH MUNICIPAL, COUNTY AND STATE REGULATIONS, AND OCCUPATIONAL SAFETY AND HEALTH ADMINISTRATION (OSHA) STANDARDS. CONTRACTOR SHALL COMPLY WITH THE LATEST REVISIONS AND INTERPRETATIONS OF THE DEPARTMENT OF LABOR SAFETY AND HEALTH REGULATIONS FOR CONSTRUCTION PROMULGATED UNDER THE OSHA ACT.
4. THE CONTRACTOR SHALL CALL "811" FOR PROPER IDENTIFICATION OF EXISTING UTILITIES AT LEAST 72 HOURS PRIOR TO ANY DEMOLITION, GRADING, OR CONSTRUCTION ACTIVITY.
5. THE CONTRACTOR IS RESPONSIBLE FOR HORIZONTALLY AND VERTICALLY LOCATING, AND SUBSEQUENTLY PROTECTING, ALL PUBLIC AND PRIVATE UTILITIES (SHOWN OR NOT SHOWN) THAT LIE IN OR ADJACENT TO THE PROJECT SITE. THE CONTRACTOR SHALL DETERMINE THE EXACT LOCATION OF ALL EXISTING UTILITIES BEFORE COMMENCING WORK AND AGREES TO BE FULLY RESPONSIBLE FOR ANY AND ALL DAMAGES WHICH MIGHT BE OCCASIONED BY THE UNDERGROUND UTILITIES. ALL UTILITIES AND FACILITIES ARE NOT NECESSARILY SHOWN. HAND DIGGING TO PROTECT UTILITIES FROM DAMAGE MAY BE REQUIRED.
6. ANY UTILITIES AND EXISTING SITE ELEMENTS (I.E. SIGNS, ROADWAYS, PATHS, STRUCTURES, NATURAL VEGETATION, OTHER EXISTING PROPERTY ITEMS, ETC.) DAMAGED DURING THE PROJECT BY THE CONTRACTOR'S WORKERS OR EQUIPMENT SHALL BE PROMPTLY REPAIRED AT THE CONTRACTOR'S EXPENSE TO THE SATISFACTION OF THE OWNER, UTILITY OWNER, REGULATORY AGENCY, AND ENGINEER.
7. CONTRACTOR SHALL MAKE EVERY EFFORT TO PRESERVE PROPERTY IRONS, MONUMENTS, OTHER PERMANENT POINTS AND LINES OF REFERENCE AND CONSTRUCTION STAKES. A NORTH CAROLINA LICENSED LAND SURVEYOR SHALL REPLACE, AT THE CONTRACTOR'S EXPENSE, PROPERTY IRONS, MONUMENTS, OTHER PERMANENT POINTS AND LINES OF REFERENCE AND CONSTRUCTION STAKES DESTROYED BY THE CONTRACTOR.
8. CONTRACTOR SHALL PLAN AND CONSTRUCT WORK IN ORDER TO CAUSE MINIMUM DISTURBANCE TO THE OWNER, ADJACENT PROPERTIES AND THE PUBLIC. CONTRACTOR SHALL COORDINATE WITH AND OBTAIN APPROVAL FROM STATE AND LOCAL REGULATORY AGENCIES ON TRAFFIC CONTROL PLANS.
9. ADJACENT STREETS AND SIDEWALKS SHALL BE MAINTAINED IN AN UNOBSTRUCTED, CLEAN CONDITION, MUD AND DUST-FREE.
10. THE CONTRACTOR SHALL HAVE A COMPLETE SET OF CONTRACT DOCUMENTS AS WELL AS ALL PERMIT APPROVALS AND EXECUTED EASEMENTS ON THE JOB SITE AT ALL TIMES.
11. CONSTRUCTION STAKEOUT FOR THIS PROJECT MAY BE PERFORMED BY THE CONTRACTOR, USING A DIGITAL (CADD) FILE PROVIDED BY THE ENGINEER. THE CONTRACTOR SHALL NOTIFY THE ENGINEER IMMEDIATELY OF ANY DISCREPANCIES FOUND BETWEEN THE DIGITAL FILE AND THE CRITICAL STAKING DIMENSIONS SHOWN ON THIS PLAN (I.E. PAVEMENT WIDTHS, CURB RADII, BUILDING SETBACKS, BUILDING FOOTPRINTS, ETC.). ANY MODIFICATIONS MADE BY OTHERS TO THE DIGITAL FILE PROVIDED BY THE ENGINEER SHALL RENDER IT VOID.
12. ACCESSIBLE ROUTES AND PARKING AREAS MUST BE PROVIDED IN ACCORDANCE WITH THE CURRENT NORTH CAROLINA BUILDING CODE AND ADA STANDARDS FOR ACCESSIBLE DESIGN.
13. TESTING OF MATERIAL REQUIRED FOR THE CONSTRUCTION OF THE IMPROVEMENTS SHALL BE PERFORMED BY AN APPROVED AGENCY FOR TESTING MATERIALS. THE NOMINATION OF THE TESTING LAB AND THE PAYMENT OF EACH TESTING SERVICES SHALL BE MADE BY THE OWNER. IT SHALL BE THE CONTRACTOR'S RESPONSIBILITY TO SHOW BY STANDARD TESTING PROCEDURES THAT THE WORK CONSTRUCTED MEETS THE REQUIREMENT OF THE NCDOT AND MUNICIPAL SPECIFICATIONS.



SHEET LIST TABLE

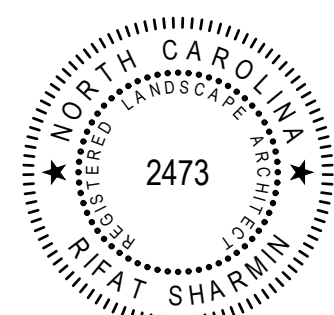
Sheet Number	Sheet Title
C0.00	COVER
C1.01	EXISTING CONDITIONS
C1.03	DEMOLITION PLAN
C2.01	SITE PLAN
C3.00	SITE DETAILS
C3.01	FURNISHING DETAILS
C4.01	PLANTING PLAN
C4.03	PLANTING DETAILS
E1.00	ELECTRICAL SPECIFICATIONS AND SYMBOLS
E2.00	ELECTRICAL AND DEMOLITION PLAN
E2.01	ELECTRICAL PLAN
E3.00	ELECTRICAL DETAILS

CONTACT LIST:

Landscape Architect
Rifat Sharrin
WithersRavenel
137 S Wilmington Street, Suite 200
Raleigh, NC 27601
919-535-5200
rsharrin@withersravenel.com

Project Manager
Jon Blasco
WithersRavenel
137 S Wilmington Street, Suite 200
Raleigh, NC 27601
919-535-5200
jblasco@withersravenel.com

Electrical Engineer
Andy Flynt
SKA Consulting Engineers, Inc.
7900 Triad Center Drive, Suite 200
Greensboro, NC 27409-9075
336-855-0993 ext. 122
AJFlynt@skaeng.com



WithersRavenel
137 S Wilmington Street | Suite 200 | Raleigh, NC 27601
License #: F-1479 | t: 919.469.3340 | www.withersravenel.com

PREPARED BY:

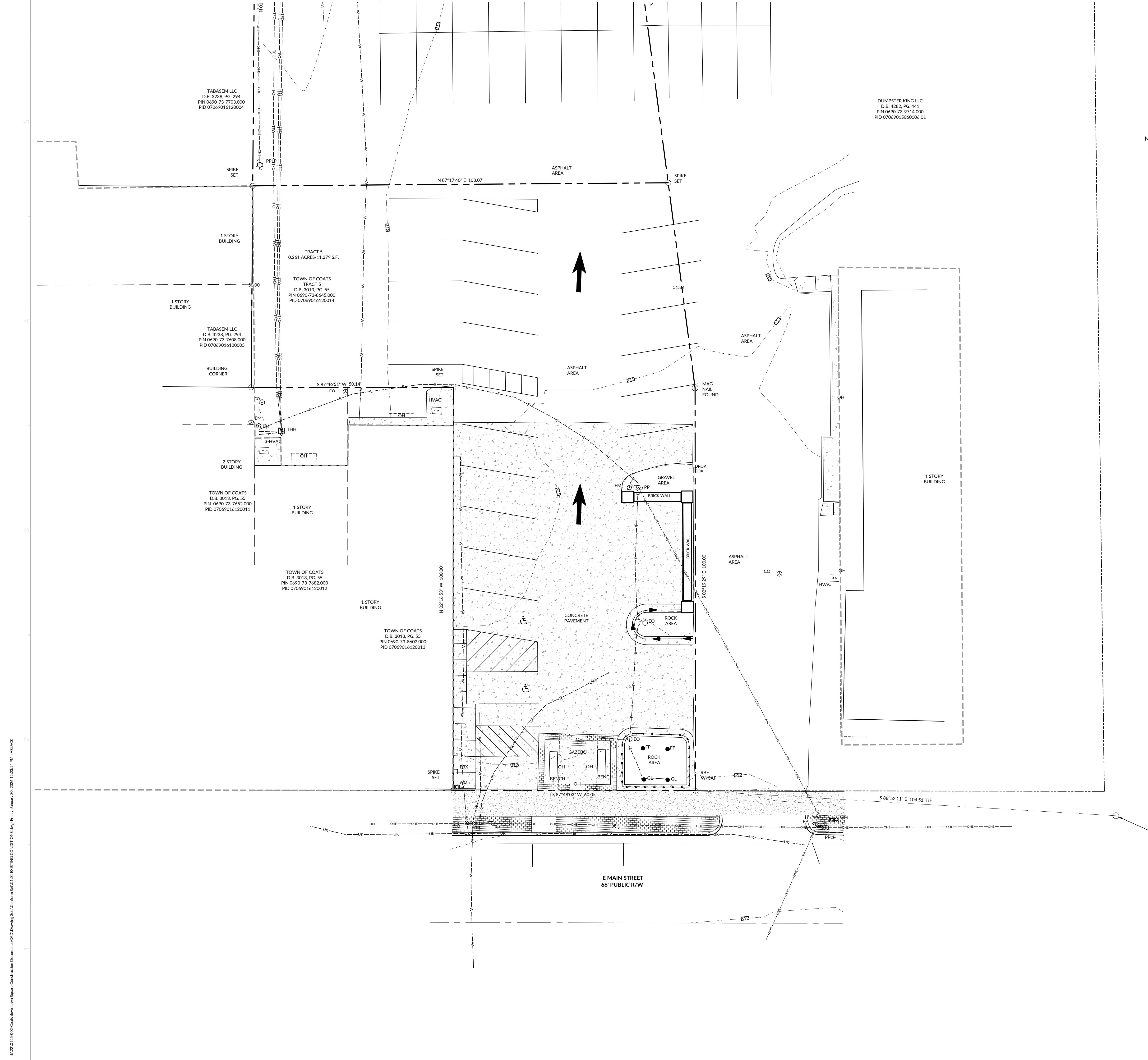
DEVELOPER:

TOWN OF COATS

25 E MAIN STREET
COATS, NC 27521
PHONE #: 910-897-5183
ATTENTION: BARBARA HOLLERAND

CONFORMED SET
Coats Downtown Square
WR PROJECT NO. 22-0125-002

INITIAL PLAN DATE: 01/30/2026



EXISTING CONDITIONS LEGEND

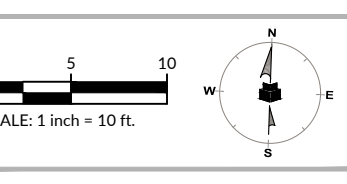
SYMBOL	DESCRIPTION
---	ADJOINER
---	PROPERTY BOUNDARY
▨	STAMPED CONCRETE PAVEMENT
---	EXISTING BUILDING
⊙	CLEANOUT
□	CONCRETE
EBX	ELECTRIC BOX
EM	ELECTRIC METER
FFE	FINISHED FLOOR ELEVATION
FP	FLAG POLE
GL	GROUND LIGHT
HVAC	HEATING, VENTILATION, AND AIR CONDITIONING UNIT
IPF	IRON PIPE FOUND
LP	LIGHT POLE
---	OVERHANG
---	OVERHEAD ELECTRIC LINE
PP	POWER POLE
---	RIGHT OF WAY
RBF	REBAR FOUND
S	SIGN
SSMH	SANITARY SEWER MANHOLE
THH	TELEPHONE HANDHOLD
---	UNDERGROUND ELECTRIC LINE
---	UNDERGROUND FORCEMAIN
---	UNDERGROUND SANITARY SEWER LINE
---	UNDERGROUND TELEPHONE FIBER OPTIC LINE
---	UNDERGROUND UNKNOWN LINE
---	UNDERGROUND WATER LINE
WM	WATER METER

NOTE:
SURVEY PROVIDED BY WITHERSRAVENEL ON 07/03/2025



TOWN OF COATS
25 E MAIN STREET
COATS, NC 27521

CONFORMED SET
COATS DOWNTOWN SQUARE
29 E. MAIN STREET | COATS, NC 27521 | HARNETT COUNTY



INITIAL PLAN DATE: 01/30/2026
REVISIONS:

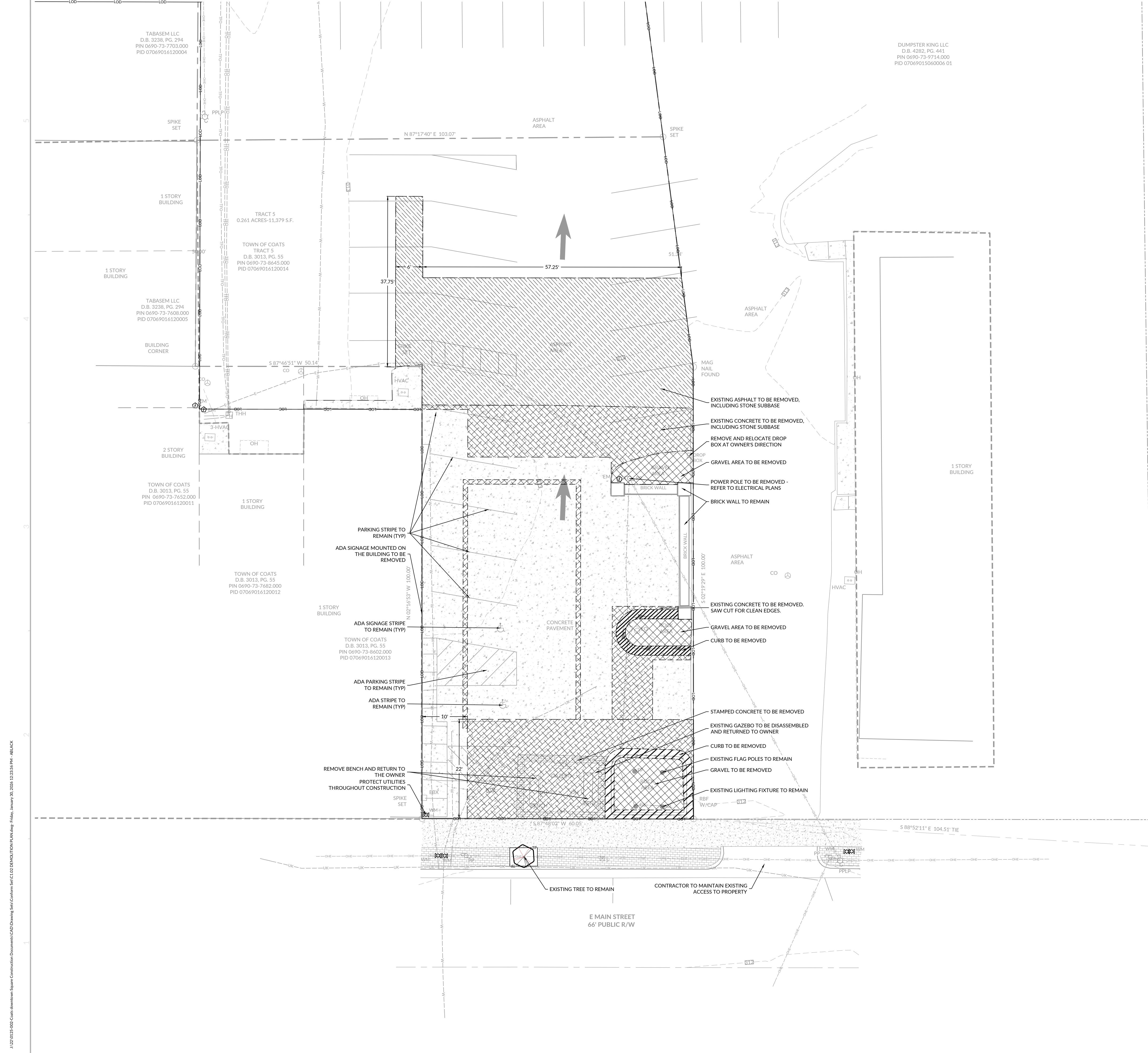
Know what's below.
Call 811 before you dig.
WR JOB NUMBER 22-0125-002
DRN: WR DGN: WR CKD: WR

EXISTING CONDITIONS

C1.01

J:\2024\0125-002 Coats downtown Square Construction Documents\2201 Drawing Set\Coats\Set C1.01 EXISTING CONDITIONS.dwg Friday, January 20, 2024 12:21:14 PM - JMB/CK

EST. 1983



EXISTING CONDITIONS LEGEND

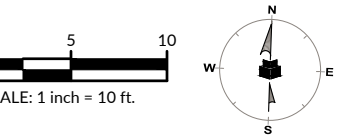
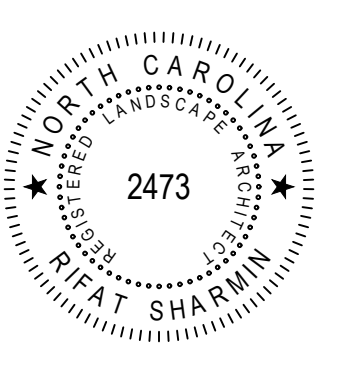
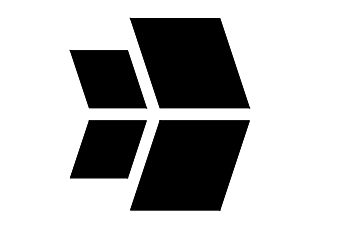
SYMBOL	DESCRIPTION
---	ADJOINER
---	PROPERTY BOUNDARY
[Hatched Box]	BRICK AREA
---	EXISTING BUILDING
⊙	CLEANOUT
[Stippled Box]	CONCRETE
EBX	ELECTRIC BOX
EM	ELECTRIC METER
FFE	FINISHED FLOOR ELEVATION
FP	FLAG POLE
GL	GROUND LIGHT
HVAC	HEATING, VENTILATION, AND AIR CONDITIONING UNIT
IPF	IRON PIPE FOUND
LP	LIGHT POLE
---	OVERHANG
---	OVERHEAD ELECTRIC LINE
PP	POWER POLE
---	RIGHT OF WAY
RFB	REBAR FOUND
S	SIGN
SSMH	SANITARY SEWER MANHOLE
THH	TELEPHONE HANDHOLD
---	UNDERGROUND ELECTRIC LINE
---	UNDERGROUND FORCEMAIN
---	UNDERGROUND SANITARY SEWER LINE
---	UNDERGROUND TELEPHONE FIBER OPTIC LINE
---	UNDERGROUND UNKNOWN LINE
---	UNDERGROUND WATER LINE
WM	WATER METER

DEMOLITION LEGEND

SYMBOL	DESCRIPTION
[Cross-hatched Box]	EXISTING CONCRETE TO BE REMOVED
[Diagonal Hatched Box]	EXISTING ROCK TO BE REMOVED
[Wavy Hatched Box]	EXISTING CURB TO BE REMOVED
[Stippled Box]	ASPHALT TO BE REMOVED
[Wavy Line]	PARKING STRIPE TO BE REMOVED
---	LIMIT OF DISTURBANCE
---	TREE PROTECTION FENCE
[Dotted Box]	MILL PAVEMENT

GENERAL DEMOLITION NOTES

- CONTRACTOR SHALL COORDINATE WITH THE OWNER AND UTILITY OWNER TO PROPERLY MAINTAIN, REMOVE OR RELOCATE EXISTING SERVICE CONNECTIONS WHEN NECESSARY.
- CONTRACTOR SHALL BE RESPONSIBLE FOR NOTIFYING SURROUNDING NEIGHBORS ABOUT ANY POTENTIAL INTERRUPTION TO SERVICE OF ANY KIND.
- EXISTING UTILITIES NOT INTENDED FOR DEMOLITION SHALL BE MAINTAINED, PROTECTED AND UNDISTURBED DURING CONSTRUCTION ACTIVITIES.
- THE CONTRACTOR SHALL PROTECT ALL ADJACENT PROPERTY, STRUCTURES AND UTILITIES. DAMAGE TO PROPERTIES OF OTHERS DUE TO THE CONTRACTOR'S ACTIVITIES SHALL BE AT THE CONTRACTOR'S EXPENSE AND SHALL BE REPLACED BY THE CONTRACTOR TO THE SATISFACTION OF THE OWNER.
- ALL MATERIAL CLEARED OR DEMOLISHED BY THE CONTRACTOR IN ORDER TO CONSTRUCT THE WORK SHALL BECOME THE PROPERTY OF THE CONTRACTOR, UNLESS OTHERWISE NOTED AND SHALL BE PROPERLY DISPOSED OF OFF-SITE.
- SAW CUTS OF EXISTING PAVEMENTS, CURBS, CUTTERS AND SIDEWALKS SHALL PRODUCE A NEAT VERTICAL EDGE.
- ALL DEMOLITION WORK SHALL BE DONE IN STRICT ACCORDANCE WITH AUTHORITIES HAVING JURISDICTION.
- ALL PERMITS REQUIRED FOR THE DEMOLITION WORK SHALL BE THE RESPONSIBILITY OF THE CONTRACTOR TO OBTAIN PRIOR TO THE START OF DEMOLITION ACTIVITIES.

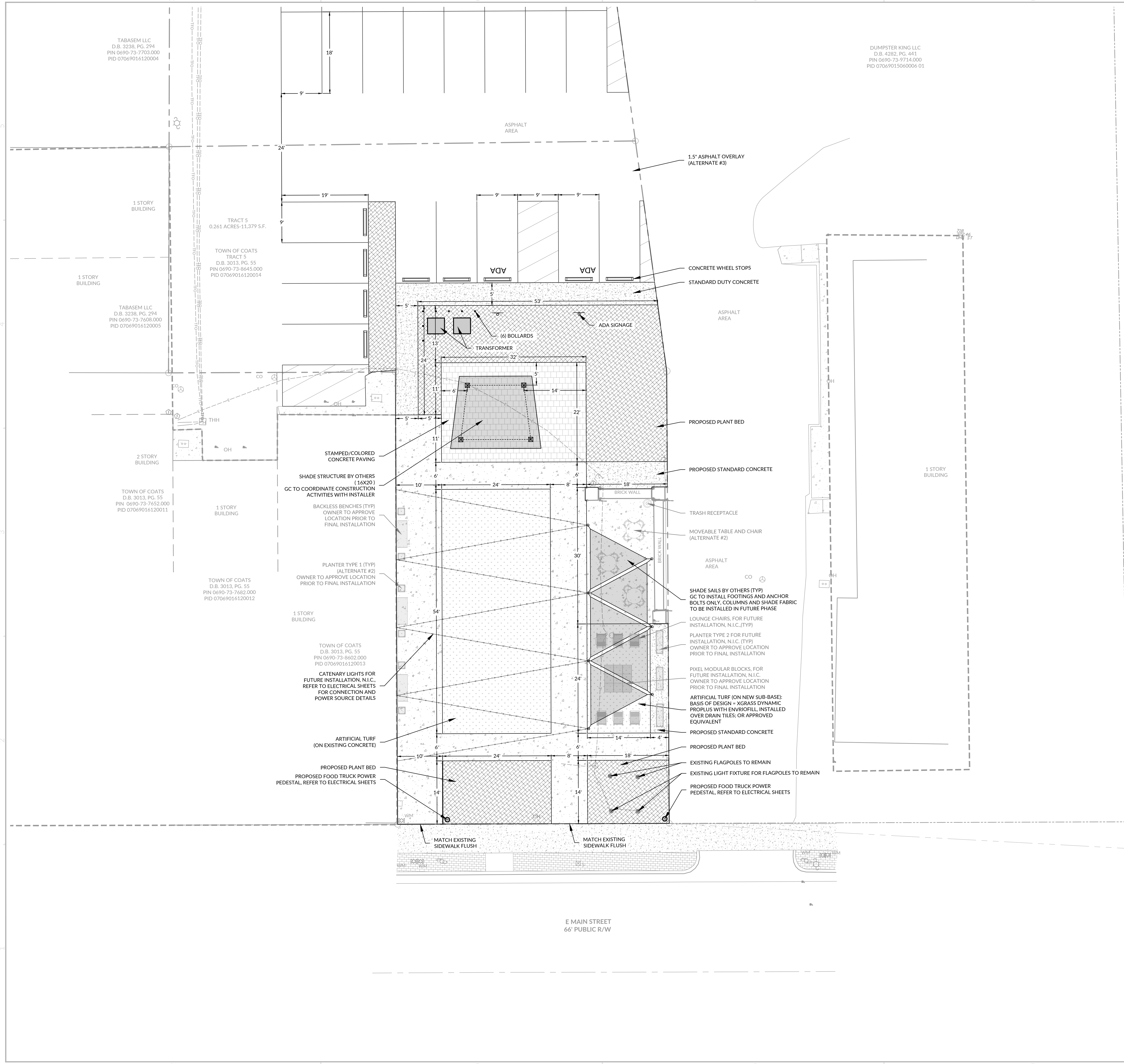


INITIAL PLAN DATE: 01/30/2026
 REVISIONS:

Know what's below.
 Call 811 before you dig.
 WR JOB NUMBER: 22-0125-002
 DRN: WR DGN: WR CKD: WR

DEMOLITION PLAN

J:\22\0125-002 Coats Downtown Square Construction Documents\2201\2201-DEMOLITION PLAN.dwg: Friday, January 20, 2026, 12:23:26 PM - a88fbc



SITE PLAN LEGEND		
SYMBOL	DESCRIPTION	DETAILS
[Pattern]	EXISTING CONCRETE	
[Pattern]	ASPHALT OVERLAY	## / C3.00
[Pattern]	PROPOSED CONCRETE	01 / C3.00
[Pattern]	PROPOSED STAMPED CONCRETE	01 / C3.00
[Pattern]	SYNTHETIC TURF BY VENDOR	## & ## / C3.00
[Symbol]	ADA SIGNAGE	05 / C3.00
[Symbol]	STRING LIGHT & POLE	
[Symbol]	PROPOSED BENCH	C3.01
[Symbol]	PIXEL MODULAR BLOCK	C3.01
[Symbol]	PLANTER TYPE 1	C3.01
[Symbol]	PLANTER TYPE 2	C3.01
[Symbol]	TRASH RECEPTACLE	C3.01
[Symbol]	PLANT BED	
[Symbol]	BOLLARD	02 / C3.00
[Symbol]	TRANSFORMER	
[Symbol]	FOOD TRUCK PEDESTAL	

SITE PLAN NOTES

PARKING COUNT
 EXISTING PARKING SPOT : 41
 PROPOSED PARKING SPOT : 45

SITE FURNISHINGS
 (BASIS OF DESIGN, OR APPROVED EQUAL) TO BE PROVIDED BY OWNER AT A FUTURE DATE - N.I.C.

BACKLESS BENCH:
 MAGLIN (MBE-0970-00105), QTY 3

LOUNGER CHAIRS:
 MAGLIN (MCH-0720-00001), QTY 6

CAFE TABLE:
 MAGLIN (MTB-2000-00001), QTY 3

CAFE CHAIRS:
 MAGLIN (MCH-2000-00002), QTY 12

PIXEL MODULAR SEATING:
 MAGLIN (PLF-2200-109195), QTY 1

PLANTER 1:
 MAGLIN (MPL-1500-00009), QTY 6

PLANTER 2:
 MAGLIN (MPL-1500-00008), QTY 3

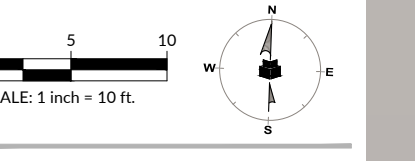
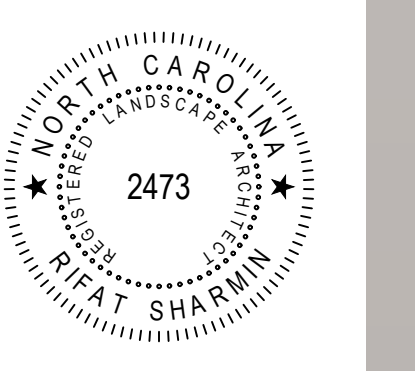
TRASH CAN:
 MAGLIN (MTR-0250), QTY 1

WithersRavenel
 137 S. Wilmington Street | Suite 200 | Raleigh, NC 27601
 License #: F-1479 | T: 919-469-3340 | www.withersravenel.com

TOWN OF COATS
 25 E MAIN STREET
 COATS, NC 27521

COATS DOWNTOWN SQUARE
 CONFORMED SET

29 E. MAIN STREET | COATS, NC 27521 | HARNETT COUNTY



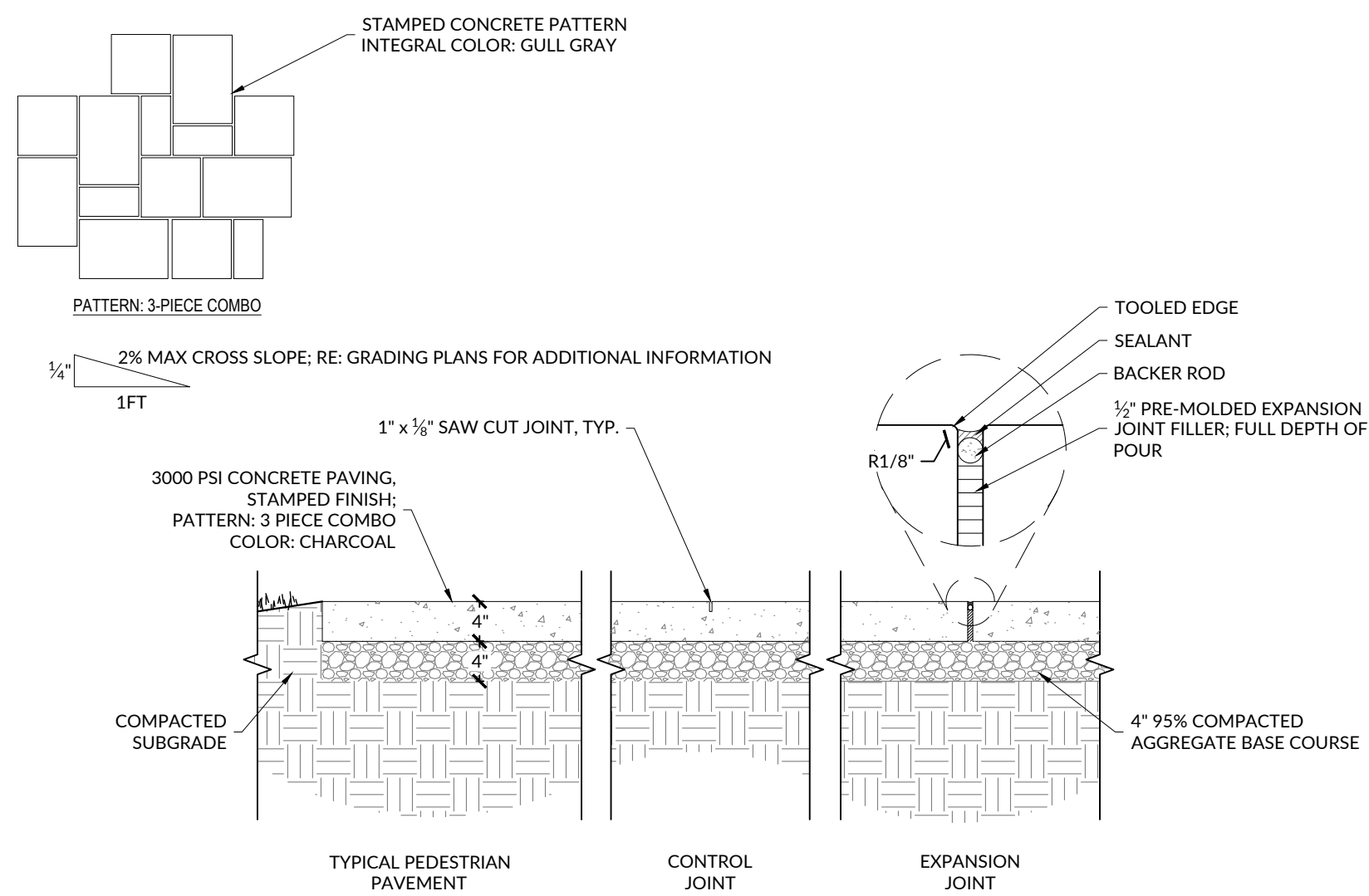
INITIAL PLAN DATE: 01/30/2026
 REVISIONS:

Know what's below.
 Call 811 before you dig.
 WR JOB NUMBER 22-0125-002
 DRN: WR DGN: WR CKD: WR

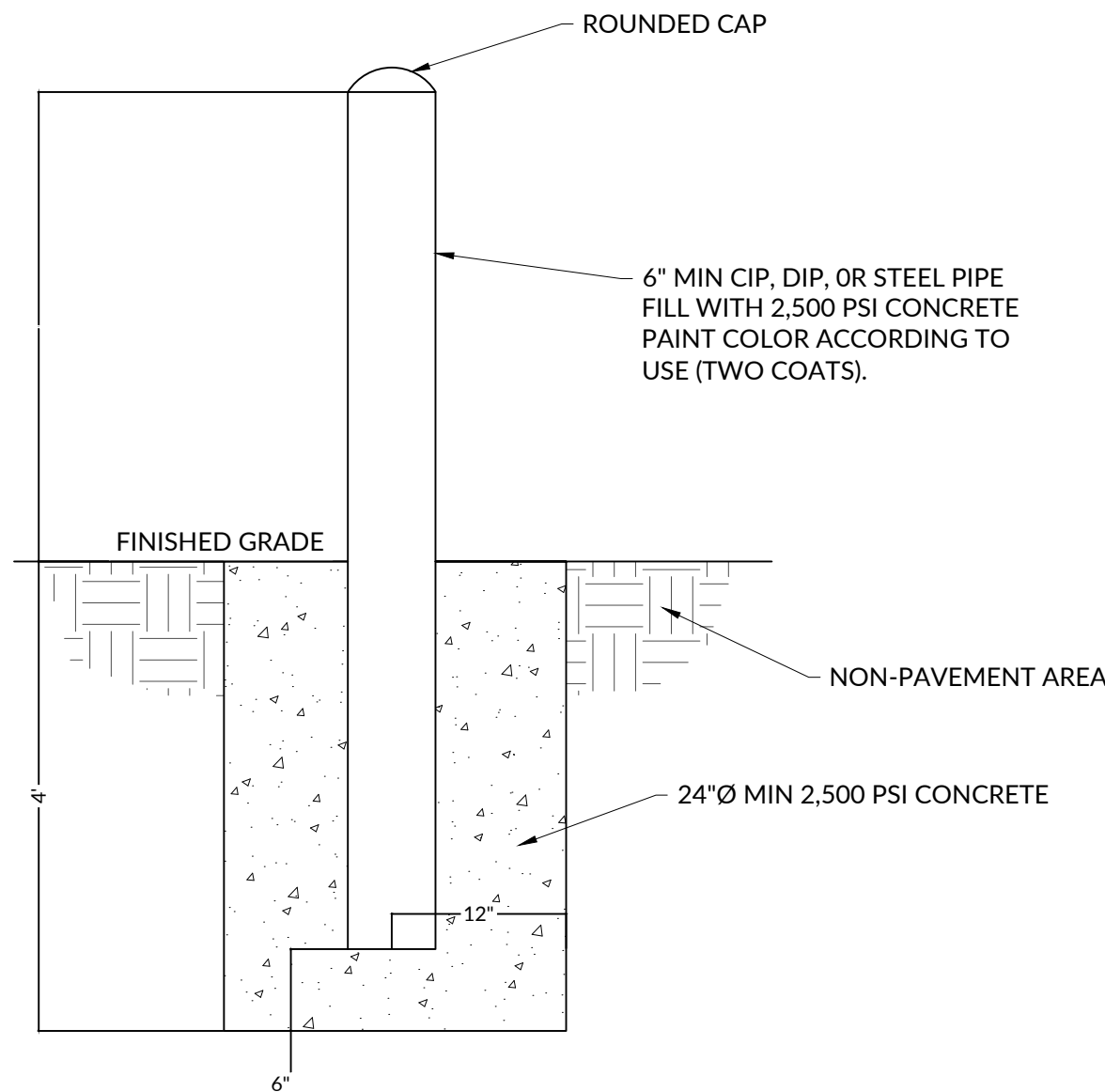
SITE PLAN

C2.01

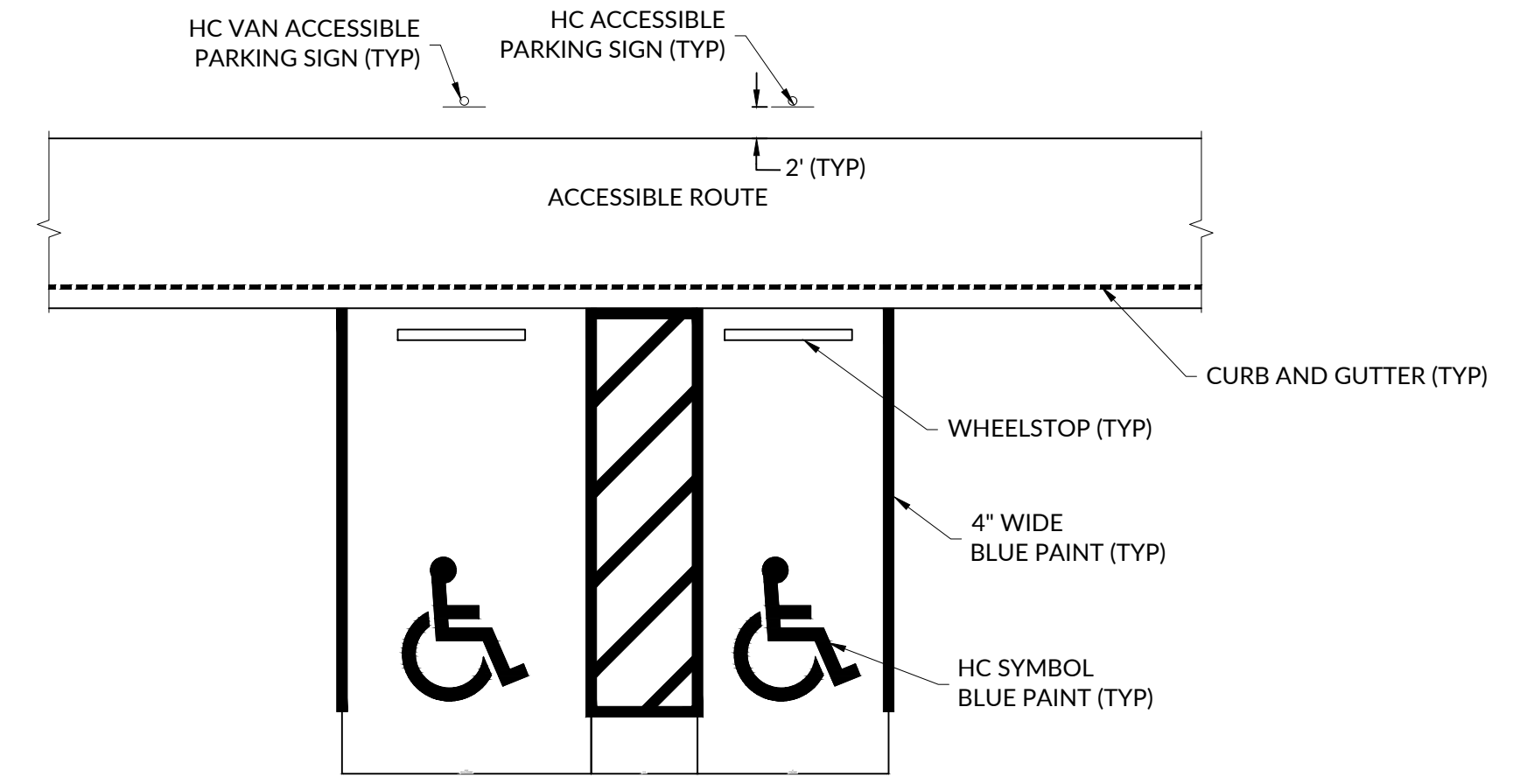
J:\2022\125-002 Coats Downtown Square Construction Documents\2401 Drawing Set\Coats Downtown Square\Site Plan.dwg, Friday, January 26, 2025, 12:25:45 PM - AB/MSK



- NOTES:**
1. PROVIDE EXPANSION JOINT WHERE WALKS ARE POURED AGAINST VERTICAL SURFACES AND/OR DIFFERENT PAVING MATERIALS & AS SPECIFIED ON PLANS OR 25'-0" MAX O.C.
 2. PROVIDE CONTRACTION JOINT AT 5' INTERVALS UNLESS OTHERWISE SPECIFIED (SEE PLAN).
 3. CONTRACTOR TO PROVIDE MOCK-UP OF CONCRETE FINISH, COLOR, AND SCORING FOR OWNERS APPROVAL. MOCK-UP CAN BE USED AS PART OF FINAL PROJECT.

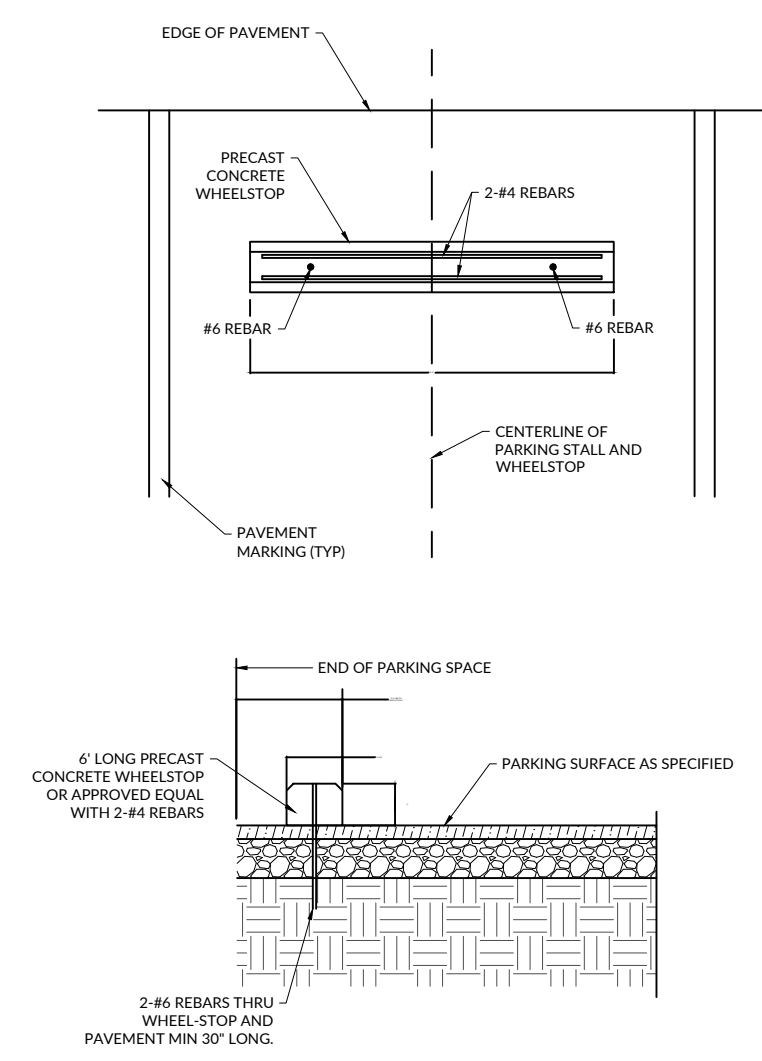


02 BOLLARD
SCALE: NTS

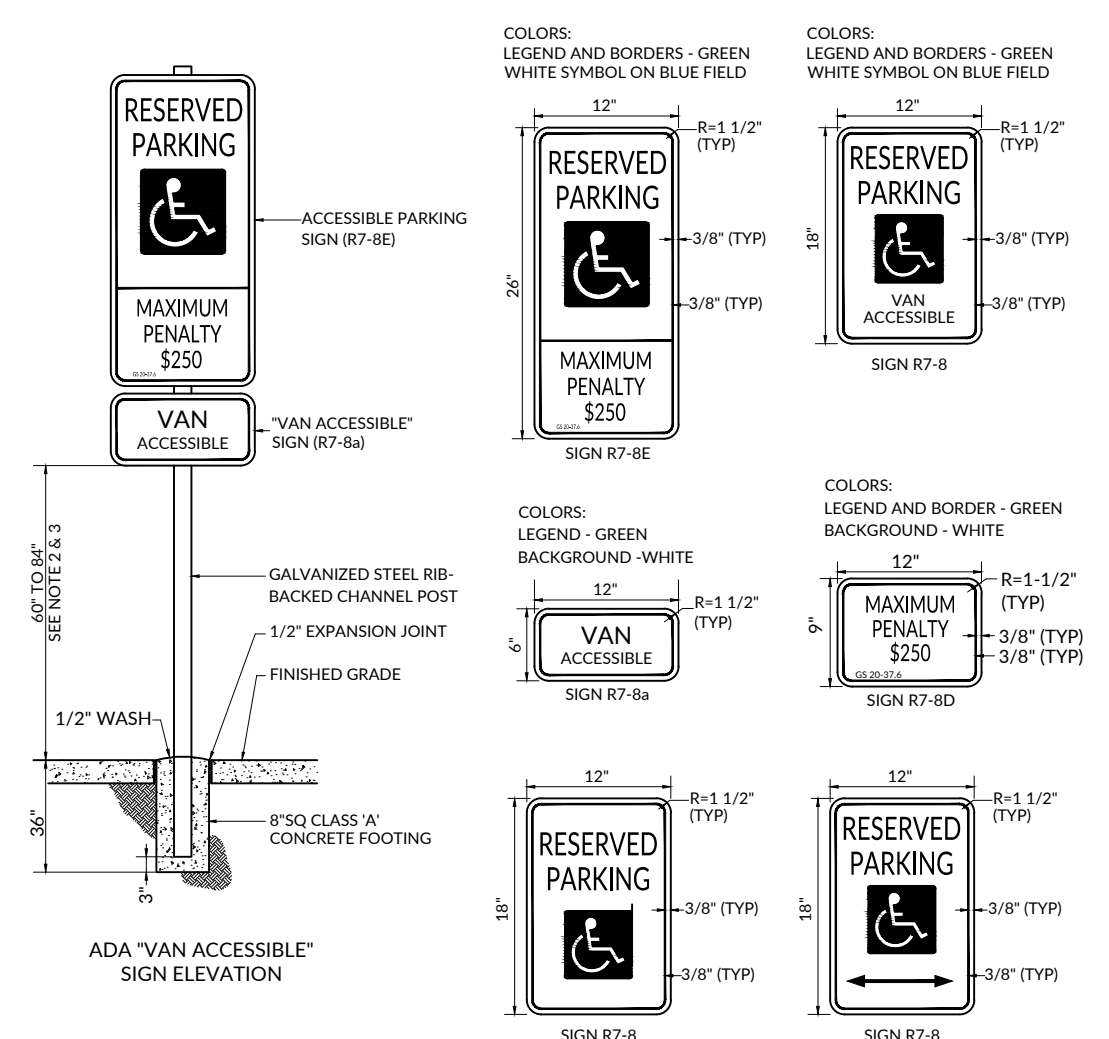


- NOTES:**
1. SPACE LENGTH AND WIDTH SHALL BE AS SHOWN ON THE PLAN. THE PROVIDED DIMENSIONS ARE MINIMUM REQUIREMENTS.

03 ADA STRIPING
SCALE: NTS

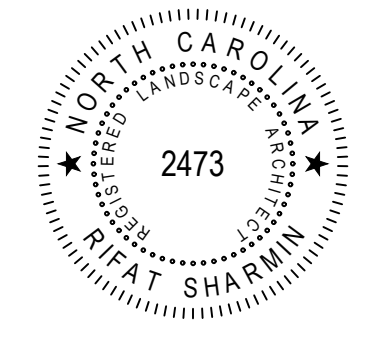


04 WHEEL STOP
SCALE: NTS



05 ADA PARKING SIGN
SCALE: NTS

- NOTES:**
1. HEIGHT OF R-7 RESERVED PARKING SIGNS AS PRESCRIBED BY MANUAL ON UNIFORM TRAFFIC CONTROL DEVICES (MUTCD).
 2. 60" HEIGHT TO BOTTOM OF SIGN WHEN PEDESTRIAN PATH FROM CAR TO WALK DOES NOT PASS BY OR UNDER THE SIGN.
 3. 36" HEIGHT TO BOTTOM OF SIGN WHEN PEDESTRIAN PATH FROM CAR TO WALK PASSES BY OR UNDER THE SIGN.
 4. R-7-80 SIGNS ARE TO ACCOMPANY ALL R-7-8 PARKING SIGNS.
 5. THE SIGN MAY BE MOUNTED ON A POST, THE BUILDING FACE, A COLUMN OR OTHER FIXED MOUNTING SURFACE.



INITIAL PLAN DATE: 01/30/2026
REVISIONS:

Know what's below.
Call 811 before you dig.
WR JOB NUMBER 22-0125-002
DRN: WR DGN: WR CKD: WR

SITE DETAILS

C3.00

J:\2024\25-002 Coats Downtown Square Construction Documents\2500 Drawing Sets\Coats\Set C3.00 SITE DETAILS.dwg Friday, January 26, 2024 12:28:48 PM - JBB/CK

900 SERIES

MBE-0970-00105

DESCRIPTION: 900 Series - 970 Backless Bench: 70in. Cast Aluminum Ends, Thermally Modified Ash Wood Seat

FINISH: The Maglin Powdercoat System provides a durable finish on all metal surfaces. Wood slats are treated with penetrating sealers.

INSTALLATION: The bench is delivered pre-assembled. Holes (0.5") are provided in each foot for securing to base.

TO SPECIFY: Select MBE-0970-00105
Choose - Powdercoat Color

HEIGHT: 17.31" (44.0cm) LENGTH: 70" (1778mm) DEPTH: 18.69" (47.5cm) WEIGHT: 53.7lbs (24.3kg)

MAGLIN Site Furniture
1 800 716 6004
7 077 280 8800
www.maglin.com
sales@maglin.com

All drawings, specifications, design and details on this page remain the property of Maglin Site Furniture Inc. and may not be used without Maglin authorization. Details and specifications may vary due to continuing improvements of our products.

TO BE PROVIDED BY OWNER AT A FUTURE DATE - N.I.C.

700 SERIES

MCH-0720-00001
Legacy # MCH720-M

DESCRIPTION: 700 Series - 720 Chair: 38.13in L, Laser Cut and Formed Steel Frame, Metal Seat, Surface Mount

FINISH: All steel components are protected with E-Coat rust proofing. The Maglin Powdercoat System provides a durable finish on all metal surfaces.

INSTALLATION: The chair is delivered pre-assembled.

TO SPECIFY: Select MCH-0720-00001
Choose - Powdercoat Color

OPTIONS: - Foot Glides (MCH-0720-00008)

HEIGHT: 38 9/16" (97.8cm) DEPTH: 38 1/16" (96.7cm) WIDTH: 30 1/4" (76.8cm) WEIGHT: 22.03 lbs (10.0kg)

MAGLIN Site Furniture
1 800 716 6004
7 077 280 8800
www.maglin.com
sales@maglin.com

All drawings, specifications, design and details on this page remain the property of Maglin Site Furniture Inc. and may not be used without Maglin authorization. Details and specifications may vary due to continuing improvements of our products.

TO BE PROVIDED BY OWNER AT A FUTURE DATE - N.I.C.

KONTUR COLLECTION

MCH-2000-00002
Legacy # KNCH2000-MO

MATERIALS: The chair frame is constructed of solid steel rod and employs a formed steel seat.

FINISH: All steel components are protected with E-Coat rust proofing. The Maglin Powdercoat System provides a durable finish on all metal surfaces.

INSTALLATION: The chair is delivered pre-assembled and can be stacked and stored 6 chairs high.

TO SPECIFY: Select MCH-2000-00002
Choose - Powdercoat Color

HEIGHT: 33.00" (83.8) WIDTH: 19.50" (49.5cm) WEIGHT: 23.40lbs (10.6kg)

MAGLIN Site Furniture
1 800 716 6004
7 077 280 8800
www.maglin.com
sales@maglin.com

All drawings, specifications, design and details on this page remain the property of Maglin Site Furniture Inc. and may not be used without Maglin authorization. Details and specifications may vary due to continuing improvements of our products.

TO BE PROVIDED BY OWNER AT A FUTURE DATE - N.I.C.

1500 SERIES

MPL-1500-00008
Legacy # MPL1500-MPR-R4

DESCRIPTION: 1500 Series - 1500 Rectangular Planter: 18.39in H x 54.38in L x 18.38in D, Formed Steel Outer Structure, Polyurethane Waterproof Coating

FINISH: All steel components are protected with E-Coat rust proofing. The Maglin Powdercoat System provides a durable finish on all metal surfaces.

INSTALLATION: Planter comes pre-assembled and can be installed freestanding, or surface mounted. A plug in the middle can be removed if drainage is desired.

TO SPECIFY: Select MPL-1500-00008

HEIGHT: 18.19" (46.2cm) LENGTH: 54.38" (138.1cm) DEPTH: 18.38" (46.7cm) WEIGHT: 167.36lbs (75.9kg)

MAGLIN Site Furniture
1 800 716 6004
7 077 280 8800
www.maglin.com
sales@maglin.com

All drawings, specifications, design and details on this page remain the property of Maglin Site Furniture Inc. and may not be used without Maglin authorization. Details and specifications may vary due to continuing improvements of our products.

TO BE PROVIDED BY OWNER AT A FUTURE DATE - N.I.C.

1500 SERIES

MPL-1500-00009
Legacy # MPL1500-MPS-S1

DESCRIPTION: 1500 Series - 1500 Square Planter: 18.39in H x 18.38in L x 18.38in D, Formed Steel Outer Structure, Polyurethane Waterproof Coating

FINISH: All steel components are protected with E-Coat rust proofing. The Maglin Powdercoat System provides a durable finish on all metal surfaces.

INSTALLATION: Planter comes pre-assembled and can be installed freestanding, or surface mounted. A plug in the middle can be removed if drainage is desired.

TO SPECIFY: Select MPL-1500-00009
Choose - Powdercoat Color

HEIGHT: 18.19" (46.2cm) LENGTH: 18.38" (46.7cm) DEPTH: 18.38" (46.7cm) WEIGHT: 73.27lbs (33.23kg)

MAGLIN Site Furniture
1 800 716 6004
7 077 280 8800
www.maglin.com
sales@maglin.com

All drawings, specifications, design and details on this page remain the property of Maglin Site Furniture Inc. and may not be used without Maglin authorization. Details and specifications may vary due to continuing improvements of our products.

TO BE PROVIDED BY OWNER AT A FUTURE DATE - N.I.C.

KONTUR

MTB-2000-00001
Legacy # KNT2000-MG-FS

MATERIALS: The table top is laser cut with a spun metal edge. The legs are constructed from 5/8" diameter solid rod.

FINISH: All steel components are protected with E-Coat rust proofing. The Maglin Powdercoat System provides a durable finish on all metal surfaces.

INSTALLATION: The table comes pre-assembled. Each leg has a glide to protect paint surface.

TO SPECIFY: Select MTB-2000-00001
Choose - Powdercoat Color

HEIGHT: 30" (76.2cm) DIAMETER: 36" (91.4cm) WEIGHT: 55 lbs (25kg)

MAGLIN Site Furniture
1 800 716 6004
7 077 280 8800
www.maglin.com
sales@maglin.com

All drawings, specifications, design and details on this page remain the property of Maglin Site Furniture Inc. and may not be used without Maglin authorization. Details and specifications may vary due to continuing improvements of our products.

TO BE PROVIDED BY OWNER AT A FUTURE DATE - N.I.C.

MTR-0250 Trash Receptacles

Product Data Sheet

Built to last with elegant yet robust heavy-duty steel flat bar and High Security steel tube, the 200 Series - 250 Trash Container exhibits classic form that will suit any design context. This capacious waste receptacle comes with a 32-gallon, commercial-grade black plastic liner, spun metal lid and optional side-opening configuration with self-closing slam latch for easy trash removal.

Features:

- Heavy duty steel flat bar frame and H.S. steel frame
- 32 gallon capacity
- Spun metal lid
- Optional dome lid, side opening, side ash receptacle and vinyl graphics
- MTR-0250 Trash Receptacles are delivered pre-assembled. Holes are provided in each mounting foot for securing to base.

Finishes:

- All steel components are protected with E-Coat Rust Proofing.
- The Maglin Powdercoat System provides a durable finish on all metal surfaces.
- Choose from 14 standard gloss powdercoat colors
- Fine Textured collection available for an upcharge (not available with vinyl graphic application)

To Specify:

- Specify MTR-0250 trash receptacle
- Specify powdercoat color
- Choose standard lid or dome lid
- Choose polyethylene liner or galvanized liner
- Choose standard or side opening
- Optional side ash receptacle
- Optional vinyl graphics: fill out an approval form
- Refer to the chart on page 2 for complete model numbers and selections

HEIGHT: 32" (81.3cm) DIAMETER: 24" (61.0cm) WEIGHT: 25 lbs (11.3kg)

MAGLIN Site Furniture
1 800 716 6004
7 077 280 8800
www.maglin.com
sales@maglin.com

All drawings, specifications, design and details on this page remain the property of Maglin Site Furniture Inc. and may not be used without Maglin authorization. Details and specifications may vary due to continuing improvements of our products.

TO BE PROVIDED BY OWNER AT A FUTURE DATE - N.I.C.

XGRASS INNOVATIVE TURF SOLUTIONS

DYNAMIC PRO PLUS

SPECIFICATIONS:

- Face Weight: 65 oz
- Pile Height: 1.125"
- Color: Emerald
- Thatch: 1in, Polypropylene
- Secondary Backing: Livestack, 30.0 oz/yd²
- Fiber Type: W-Wave, 100% Polyethylene
- Fiber Mass: 13800 Denier, 4400 Denier Thatch
- Tufting Gauge: 3/16"
- Primary Backing: 2.0 oz/yd² R20, Two-way knit polyester
- Total Weight: 62 oz/yd²

BACKING: LIFESTACK

RECYCLABLE COMPONENTS

SHINE BLOCK
Shine Block helps reduce the reflective quality of the turf allowing our grass to appear more like a healthy, well-maintained lawn.

CONTACT US TODAY: 877.881.8477 | XGRASS.COM

Game Outdoor Sports

TILE OPTIONS

- Athlete Protection**
Lower back, knee, and joint forgiveness for players
- Resilient Material**
Specially blended material stands up to harsh weather & high intensity play
- Patented Locking System**
Precision locking system to eliminate gaps
- Optimal Tile Size for Peak Performance**
Consistent ball bounce and response for exceptional playability

Product Specs

Size & Weight - 10.12" x 10.12" x 3/4" thick, 7 oz.

Surface Texture - Open grid design provides a high grip surface in all weather conditions.

Material - Specially blended high impact copolymer polypropylene. UV stabilizer and anti-oxidant additives are molded into each tile to ensure protection against color fade and plastic degradation & oxidation.

Support Structure - Each tile is supported by 155 cross posts. This provides a stable base and gentle vertical flex.

CONTACT US TODAY: 800.540.4899 | VEICSAOR.COM

CAROLINA RECREATION & DESIGN

PROJECT NAME: COATS DOWNTOWN PLAZA

LOCATION: COATS, NC 27521

STRUCTURE TYPE: SPT SAILS JOINED

USE: VARIES

USASHADE

PERFORMANCE: 25 DAY'S COMPRESSIVE STRENGTH 5 OF ASTM D108, ASTM D108, ASTM E 1862, CLASS 5

PLAN VIEW

PERSPECTIVE VIEW

SOUTH ELEVATION

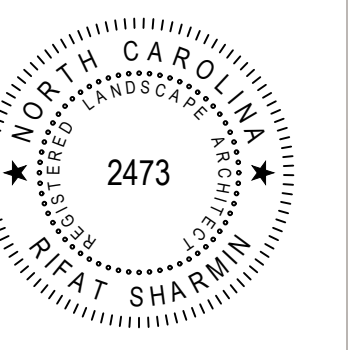
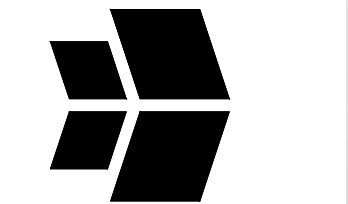
WEST ELEVATION

FOOTING (HSS 10.75 x 0.365)
(RECESSED BASE PLATE, RSP)
(USE FOR NON-CONSTRAINED CASES)

NOT TO BE USED FOR CONSTRUCTION

SHADE SAIL FOOTING AND ANCHOR BOLTS - PROVIDED FOR PRICING ONLY AND NOT TO BE USED FOR CONSTRUCTION. FINAL DETAIL TO BE PROVIDED PRIOR TO START OF CONSTRUCTION.

PROVIDED FOR REFERENCE ONLY - SHADE SAILS AND POSTS NOT IN CONTRACT

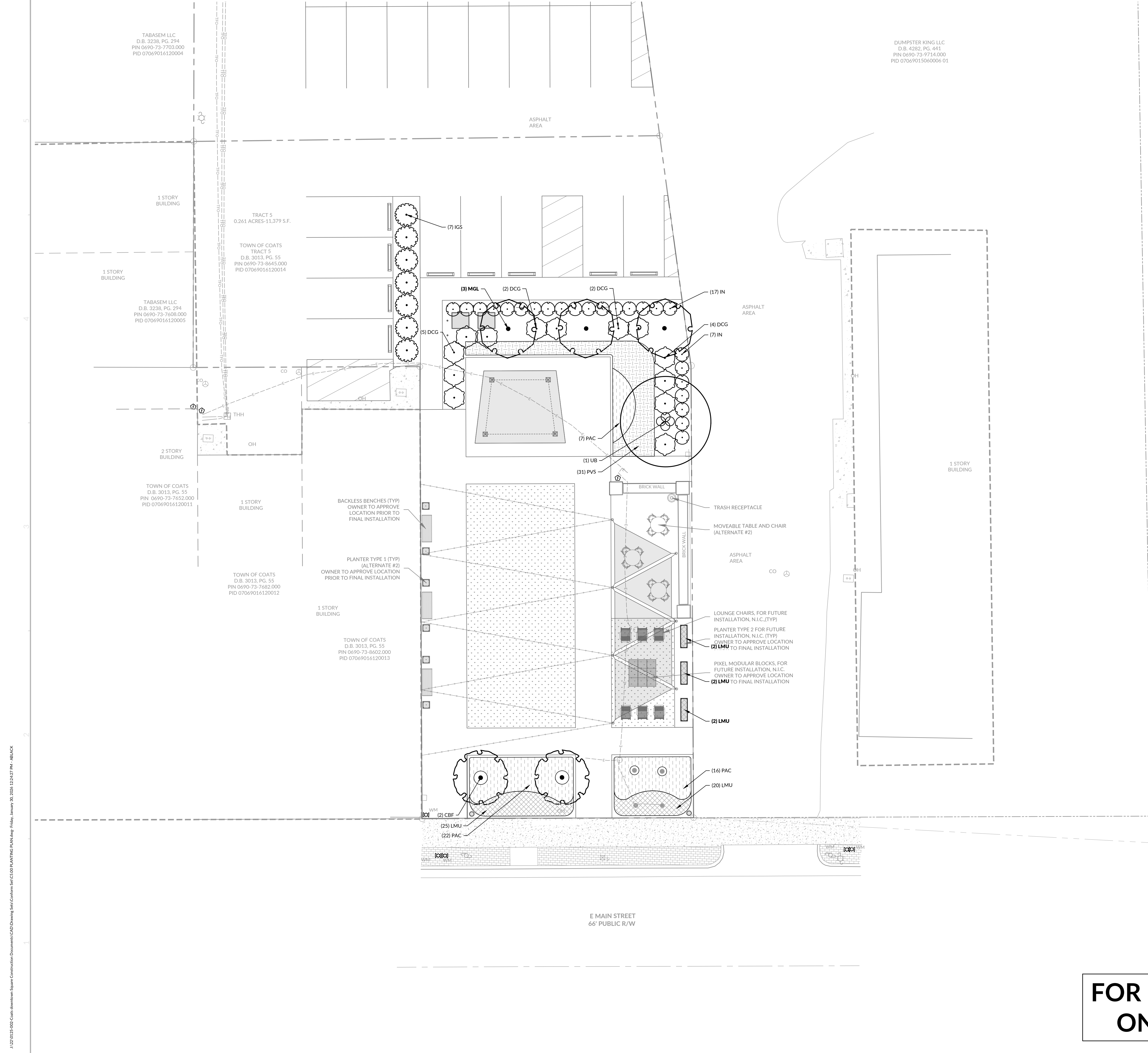


INITIAL PLAN DATE: 01/30/2026
REVISIONS:

Know what's below.
Call before you dig.
WR JOB NUMBER: 22-0125-002
DRN: WR DGN: WR CKD: WR

FURNISHING DETAILS

C3.01

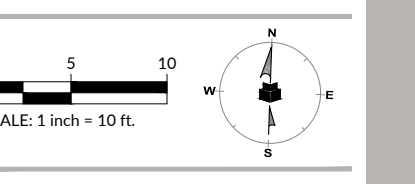


PLANTING PLAN LEGEND

SYMBOL	CODE	BOTANICAL NAME
TREES		
	UB	ULMUS PARVIFOLIA 'UPMIT'
UNDERSTORY TREE		
	CBF	CARPINUS BETULUS 'FASTIGIATA'
	MGL	MAGNOLIA GRANDIFLORA 'LITTLE GEM'
SHRUBS		
	DCG	DISTYLUM MYRICOIDES 'CINNAMON GIRL'
	IG	ILEX CRENATA 'GOLDEN SOFT TOUCH'
	IGS	ILEX GLABRA 'SHAMROCK'
GROUNDCOVERS		
	LMU	LIRIOPE MUSCARI 'BIG BLUE'
	PVS	PANICUM VIRGATUM 'SHENANDOAH'
	PAC	PENNISETUM ALOPECUROIDES 'CASSIAN'

- ### PLANTING PLAN NOTES
- THE CONTRACTOR SHALL TAKE PROPER PRECAUTIONS NOT TO DAMAGE EXISTING PLANTS, FACILITIES AND STRUCTURES NOT TO DAMAGE EXISTING PLANTS, FACILITIES AND STRUCTURES THAT ARE TO REMAIN. THE CONTRACTOR SHALL RESTORE DISTURBED AREAS TO THEIR ORIGINAL CONDITION TO THE SATISFACTION OF THE LANDSCAPE ARCHITECT AND OWNER.
 - UTILITIES SHOWN ON THE LANDSCAPE DRAWINGS ARE FOR REFERENCE ONLY. SEE UTILITY DRAWINGS FOR EXISTING AND PROPOSED UTILITY LOCATIONS. SEE UTILITY NOTES FOR ADDITIONAL INFORMATION.
 - NO CHANGES TO ANY ASPECT OF APPROVED PLAN, INCLUDING BUT NOT LIMITED TO LANDSCAPING, GRADING, BUILDING ELEVATIONS, LIGHTING, OR UTILITIES SHALL BE MADE WITHOUT THE APPROVAL OF THE GOVERNING MUNICIPALITY, ENGINEER, LANDSCAPE ARCHITECT AND OWNER.
 - ALL PLANTS PROVIDED BY THE CONTRACTOR SHALL MEET OR SURPASS THE SPECIFICATIONS GIVEN IN THE PLANT TABLE AND CONFORM TO THE AMERICAN STANDARD OF NURSERY STOCK, ANSI Z601-1973 IN REGARD TO SIZING, GROWING AND BALLED AND BURLAPPED (B&B) SPECIFICATIONS. PLANTS SHALL BE FULL AND HEAVY, AND IN HEALTHY CONDITION AT THE TIME OF PLANTING. LANDSCAPE ARCHITECT SHALL REJECT ANY PLANT NOT MEETING THESE GUIDELINES AND REQUIRE REPLACEMENT.
 - ALL PLANTS ARE TO BE FULLY WARRANTED (INCLUDING LABOR AND MATERIALS) FOR A PERIOD OF NOT LESS THAN ONE (1) YEAR FROM FINAL ACCEPTANCE.
 - PLANTING SHALL BE INSTALLED DURING THE IDEAL SEASON BASED ON THE TYPE OF PLANT.
 - ALL PLANTS THAT ARE UNABLE TO BE IMMEDIATELY PLANTED SHALL BE STORED IN A PROTECTED AREA OUT OF DIRECT SUN AND WIND. PLANTS SHALL BE EVENLY AND CONSISTENTLY WATERED, AS NEEDED, TO PREVENT DRYING OF ROOTS. ROOT BALLS OF B&B STOCK SHALL BE COVERED WITH AT LEAST 4 INCHES OF HARDWOOD MULCH TO MAINTAIN MOISTURE IN ROOTS.
 - THE CONTRACTOR SHALL VERIFY ALL PLANT QUANTITIES SHOWN ON PLANS AND CLARIFY ANY DISCREPANCIES WITH LANDSCAPE WIND.
 - PLANTS SHALL BE EVENLY AND CONSISTENTLY WATERED, AS NEEDED, TO PREVENT DRYING OF ROOTS. ROOT BALLS OF B&B STOCK SHALL BE COVERED WITH AT LEAST 4 INCHES OF HARDWOOD MULCH TO MAINTAIN MOISTURE IN ROOTS.
 - LANDSCAPE ARCHITECT SHALL BE NOTIFIED IN WRITING OF ANY PROPOSED PLANT SUBSTITUTIONS BY THE CONTRACTOR. NO SUBSTITUTIONS SHALL BE MADE UNDER ANY CIRCUMSTANCES WITHOUT PRIOR APPROVAL BY THE LANDSCAPE ARCHITECT OR OWNER'S REPRESENTATIVE.
 - ALL PLANTS AND PLANTING BEDS ARE TO BE LOCATED BY SCALED DIMENSIONS FROM BUILDINGS, CURBS, PAVEMENTS, ETC. SPECIFIC ATTENTION SHALL BE GIVEN TO ENSURE THAT PLANTS INDIVIDUALLY SHOWN ON THE PLAN ARE ACCURATELY LOCATED. LOCATION OF ALL PLANTS SHALL BE REVIEWED IN THE FIELD BY THE LANDSCAPE ARCHITECT PRIOR TO INSTALLATION. CONTRACTOR SHALL PROVIDE 48 HOURS FOR REVIEW.
 - A PRE-EMERGENT HERBICIDE SHALL BE APPLIED TO ALL NEW PLANTING BEDS IN ACCORDANCE WITH MANUFACTURER'S RECOMMENDATIONS AND ALLOWED TO DISSIPATE PRIOR TO INSTALLATION OF ANY PLANT MATERIAL.
 - ALL LANDSCAPE AREAS ARE TO BE GRADED FOR POSITIVE DRAINAGE AND TO ENSURE NO STANDING WATER. SEE GRADING PLAN FOR SPECIFIC GRADING INFORMATION. CONTRACTOR SHALL NOTIFY LANDSCAPE ARCHITECT AND/OR ENGINEER OF ANY GRADING DISCREPANCIES OR CONCERNS.
 - ESTABLISH AND MAINTAIN TOP OF GRADE BELOW ADJACENT CURBS, WALKWAYS AND OTHER HARDSCAPE AREAS TO ALLOW FOR INSTALLATION OF MULCH.
 - ALL PLANTING BEDS ARE TO BE COVERED WITH HARDWOOD MULCH TO A MINIMUM DEPTH OF 3 INCHES, UNLESS INDICATED OTHERWISE. MULCH SHALL BE AS SELECTED BY THE LANDSCAPE ARCHITECT. CONTRACTOR SHALL SUBMIT A SAMPLE FOR APPROVAL BY LANDSCAPE ARCHITECT PRIOR TO PURCHASE AND DELIVERY TO PROJECT SITE.
 - FINISH OFF 2-4 FOOT CLEAR ZONE AROUND TREES WITH A 2-INCH LAYER OF MULCH, BUT DO NOT PLACE UP AGAINST OR MOUND AROUND THE ROOT FLARE.
 - MIXED GROUND COVER AND PLANTS SPECIFIED FOR MASS PLANTINGS SHALL BE PLANTED IN ODD GROUPINGS AND LOCATED AS REQUIRED TO PROVIDE A GENERAL MIXING OF SPECIES. DO NOT PLANT IN ROWS OR REPETITIVE PATTERNS UNLESS OTHERWISE DIRECTED.
 - ALL TREES ADJACENT TO PEDESTRIAN WALKWAYS AND IN SIGHT TRIANGLES SHALL BE UNDER-TIMMED SUFFICIENTLY TO ALLOW CLEAR SIGHT AND PEDESTRIAN ACCESS UP TO 6 FEET ABOVE SIDEWALK ELEVATION. ALL PRUNING SHALL BE PERFORMED BY A CERTIFIED ARBORIST AND ADHERE TO THE ANSI A300 PRUNING STANDARD. PRUNING CUTS ARE TO BE DELIBERATE AND TARGETED ONLY TO THE NECESSARY BRANCHES IN ORDER TO SATISFY SIGHT AND CLEARANCE REQUIREMENTS WHILE MAINTAINING THE INTEGRITY OF THE TREES.
 - CONTRACTOR IS RESPONSIBLE FOR FULLY MAINTAINING ALL PLANTING (INCLUDING, BUT NOT LIMITED TO WATERING, MULCHING, SPRAYING, FERTILIZING, ETC.) OF THE PLANTING AREAS UNTIL FINAL ACCEPTANCE.
 - ANY PLANT WHICH DIES, TURNS BROWN OR DEFOLIATES PRIOR TO FINAL ACCEPTANCE OF THE WORK SHALL BE PROMPTLY REMOVED FROM THE SITE AND REPLACED WITH MATERIAL OF THE SAME SPECIES, IN ACCORDANCE WITH THE APPROPRIATE PLANTING SEASON, QUANTITY AND SIZE TO MEET PLAN SPECIFICATIONS.

FOR REFERENCE ONLY - N.I.C



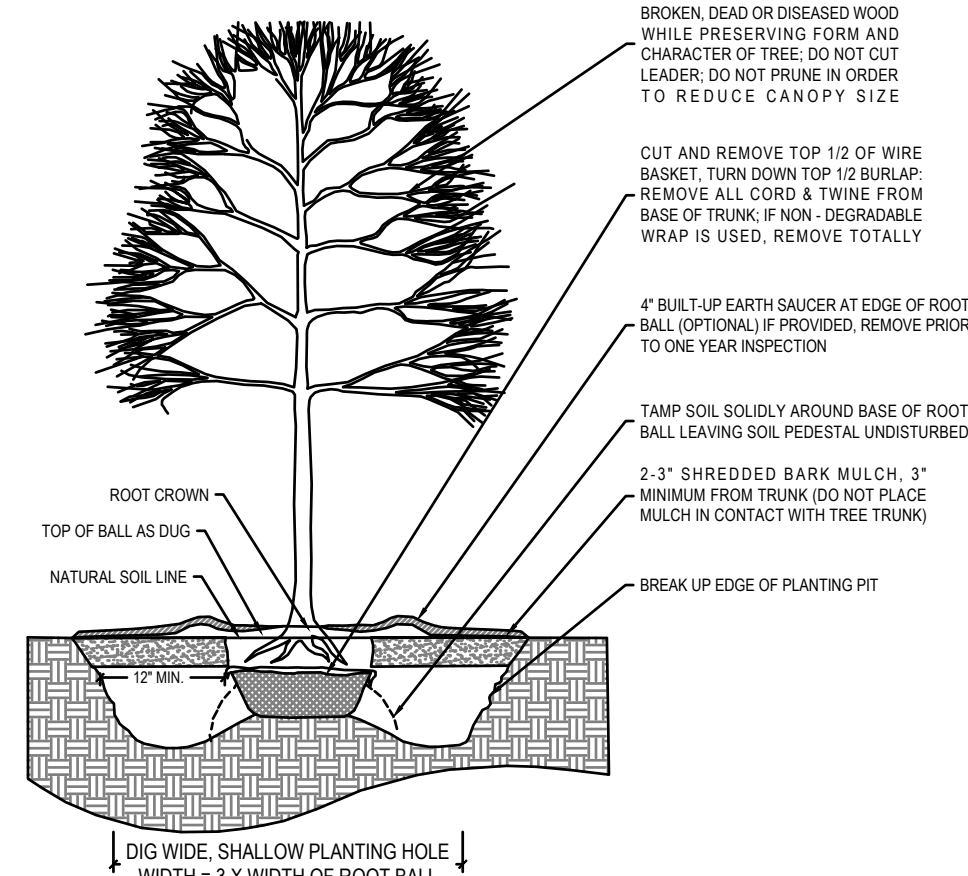
INITIAL PLAN DATE: 01/30/2026
 REVISIONS:

Know what's below.
 Call 811 before you dig.
 WR JOB NUMBER: 22-0125-002
 DRN: WR DGN: WR CKD: WR

PLANTING PLAN

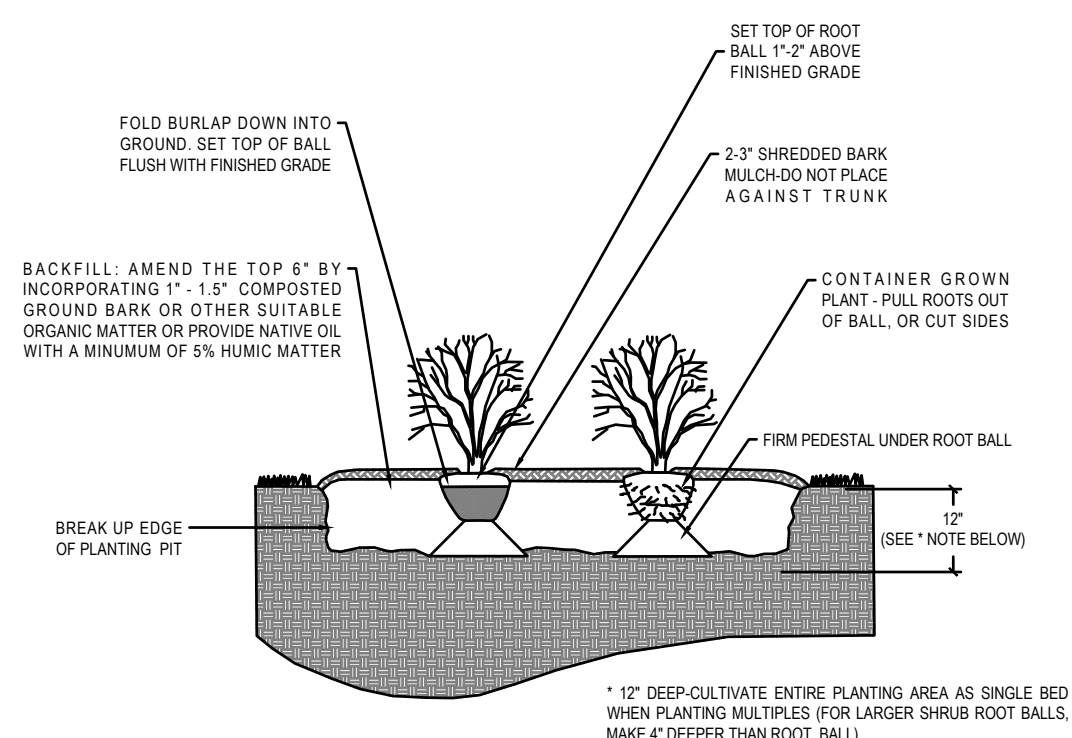
C4.01

J:\2025\25-002 Coats Downtown Square Construction Documents\250201 Drawing Set\Construction\Site\Site\CD01 Planting Plan.dwg, January 30, 2026, 12:24:27 PM - A:\JACK



- NOTES**
1. CONTRACTOR TO VERIFY THAT ADEQUATE DRAINAGE EXISTS PRIOR TO PLANTING.
 2. DO NOT WRAP TRUNK OF TREE.
 3. STAKING OF TREES IS NOT RECOMMENDED, EXCEPT ON WINDY SITES OR FOR LARGE EVERGREEN TREES. IF STAKING IS DONE, FLEXIBLE STRAPS - NOT HOES AND WIRE - SHOULD BE USED AND MUST BE REMOVED AT APPROPRIATE TIME. PROPERTY OWNER IS RESPONSIBLE FOR REPLACEMENT OF DESTROYED OR DAMAGED TREES.
 4. ALL TREES SHALL CONFORM TO THE STANDARDS SET FORTH IN THE MOST RECENT AMERICAN STANDARDS FOR NURSERY STOCK PUBLISHED BY THE AMERICAN ASSOCIATION OF NURSERMEN (A.A.N.).
 5. TREES WITH ROOT FLARE COVERED BY MORE THAN 1/2" OF SOIL WILL BE REJECTED PRIOR TO INSTALLATION.

TREE PLANTING DETAIL (LAN-37)
NTS



- NOTES**
1. ALL SHRUBS SHALL CONFORM TO THE STANDARDS SET FORTH IN THE MOST RECENT AMERICAN STANDARDS FOR NURSERY STOCK PUBLISHED BY THE AMERICAN ASSOCIATION OF NURSERMEN (A.A.N.).
 2. SOIL ANALYSIS SHALL BE OBTAINED PRIOR TO PLANTING. SOIL SHALL BE AMENDED AS RECOMMENDED.
 3. SHEET PREPARATION OF BEDS IS HIGHLY PREFERRED TO INDIVIDUAL DUG HOLES.

SHRUB/GROUNDCOVER PLANTING DETAIL (LAN-38)
NTS

*NUMBER OF PLANTS PER 100 S.F.

SPACING "D"	ROW "A"	PLANTS/S.F.
6" o.c.	5.2'	4.61
8" o.c.	6.93'	2.60
10" o.c.	8.66'	1.66
12" o.c.	10.4'	1.15
15" o.c.	13.0'	0.73
18" o.c.	15.6'	0.51
24" o.c.	20.8'	0.29
30" o.c.	26.0'	0.18
36" o.c.	31.30'	0.12
4" o.c.	3.46'	* 7.25
5" o.c.	4.33'	* 4.61
6" o.c.	5.2'	* 3.20
8" o.c.	6.93'	* 1.60
10" o.c.	8.66'	* 1.16

PLANT SPACING CHART
NTS

SYMBOL	CODE	QTY	BOTANICAL NAME	COMMON NAME	ROOT	SIZE	HEIGHT
TREES							
	UB	1	ULMUS PARVIFOLIA 'UPMTF'	BOSQUE® LACEBARK ELM	CONT.	2" CAL MIN	10' MIN
UNDERSTORY TREE							
	CBF	2	CARPINUS BETULUS 'FASTIGIATA'	UPRIGHT EUROPEAN HORNBEAM	CONT.	1.5" CAL MIN	10' MIN
	MGL	3	MAGNOLIA GRANDIFLORA 'LITTLE GEM'	LITTLE GEM DWARF SOUTHERN MAGNOLIA	CONT.	1.5" CAL MIN	10' MIN
SHRUBS							
	DCG	13	DISTYLUM MYRICOIDES 'CINNAMON GIRL'	'CINNAMON GIRL' DISTYLUM	3 GAL	CONT.	
	IGS	18	ILEX GLABRA 'SHAMROCK'	SHAMROCK INKBERRY HOLLY	3 GAL	CONT.	
	IN	24	ILEX VOMITORIA 'NANA'	DWARF YAUPON HOLLY	3 GAL	CONT.	
GROUNDCOVERS							
	LMU	51	LIRIOPE MUSCARI 'BIG BLUE'	BIG BLUE LILYTURF	2.25" PLUG	24" o.c.	
	PVS	31	PANICUM VIRGATUM 'SHENANDOAH'	SHENANDOAH SWITCH GRASS	1 GAL	36" o.c.	
	PAC	45	PENNISETUM ALOPECUROIDES 'CASSIAN'	CASSIAN FOUNTAIN GRASS	1 GAL	36" o.c.	

FOR REFERENCE ONLY - N.I.C

J:\20\0125-000 Coats downtown Square Construction Documents\2020\Drawing Sets\CD00 PLANTING PLANS.dwg 11/16/20 10:24:59 PM - A:\JACK