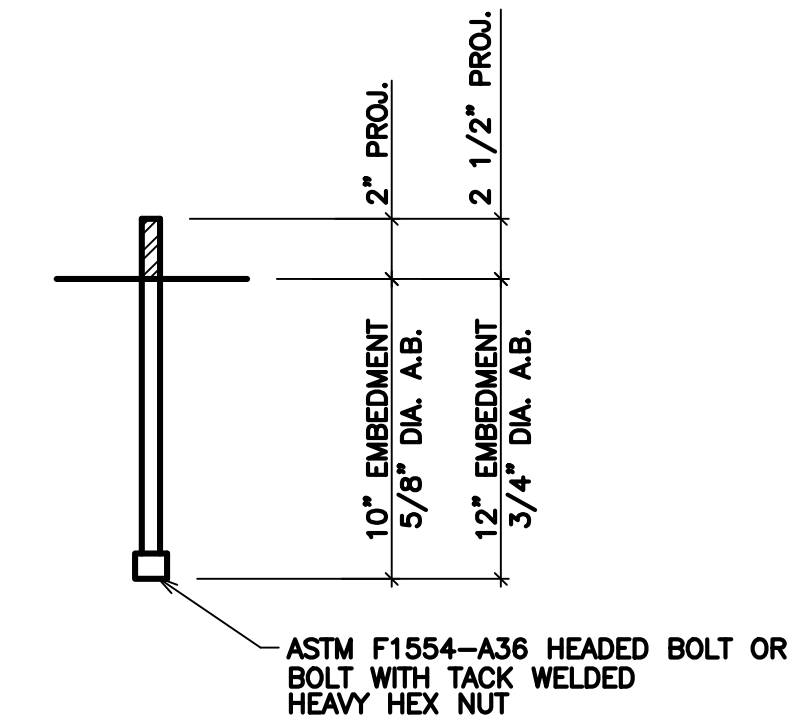
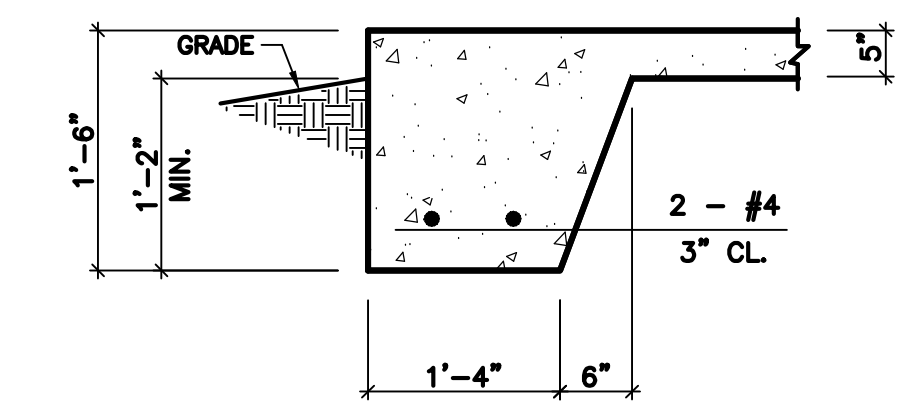


FOUNDATION PLAN

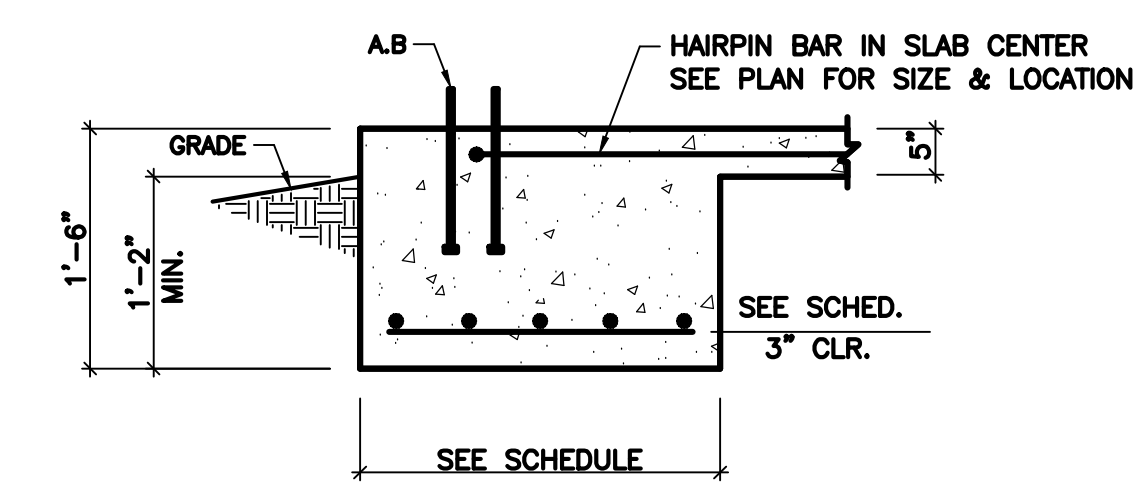
SCALE: 1/8" = 1'-0"



ANCHOR BOLT DETAIL



SECTION 1
SCALE: 3/4" = 1'-0"

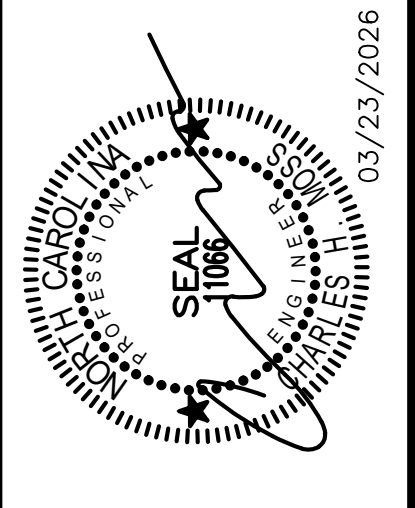


SECTION 2
SCALE: 3/4" = 1'-0"

FOOTING SCHEDULE		
TYPE	SIZE	REINFORCING
FTG. (A)	2'-0" x 2'-0" x 1'-6"	3 - #4 E.W.
FTG. (B)	2'-6" x 2'-6" x 1'-6"	4 - #4 E.W.
FTG. (C)	3'-0" x 3'-0" x 1'-6"	4 - #4 E.W.
FTG. (D)	6'-6" x 6'-6" x 1'-6"	8 - #4 E.W.

GENERAL NOTES

- CONTRACTOR SHALL BE RESPONSIBLE FOR BRACING ALL WORK DURING CONSTRUCTION.
- FOOTINGS ARE DESIGNED FOR AN ALLOWABLE BEARING CAPACITY OF 2000 P.S.F.
- CONCRETE SHALL HAVE A MINIMUM 28 DAY COMPRESSIVE STRENGTH OF 3000 P.S.I. WITH A 4" MAXIMUM SLUMP. DETAILS NOT SHOWN SHALL BE ACCORDING TO ACI 318 AND ACI 301 SPECIFICATIONS FOR CONCRETE CONSTRUCTION.
 - REINFORCING STEEL SHALL BE ASTM A-615 GRADE 60 (TIES MAY BE GRADE 40)
 - W.W.F. SHALL BE ASTM A-185
 - MINIMUM LAP: #4 - 28"
 - #5 - 32"
 - MINIMUM COVER: 3" U.N.O.
- C.J. ON PLANS INDICATE CONTROL JOINT 1/8" x 1 1/4" DEEP SAWN WITHIN 24 HOURS AFTER PLACING CONCRETE. METAL JOINT MATERIAL MAY BE USED.
- FOUNDATION BASED ON REACTIONS FURNISHED BY ARCO BUILDING SYSTEMS INC., JOB NO. 212575, DATED 3/12/2026.



C.H. MOSS, P.E.
SOLE PROPRIETOR
P.O. BOX 28
COVINGTON, GA 30015
(770)-786-3163

NO	DATE	REVISION	BY

FOUNDATION PLAN FOR:
ANTIOCH BAPTIST CHURCH
LILLINGTON, NC

DRAWING NUMBER	
4972	
SHEET	OF:
S-1	1