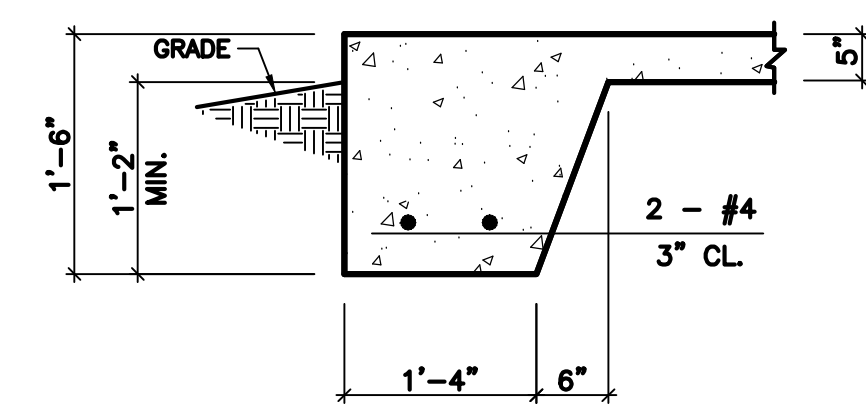
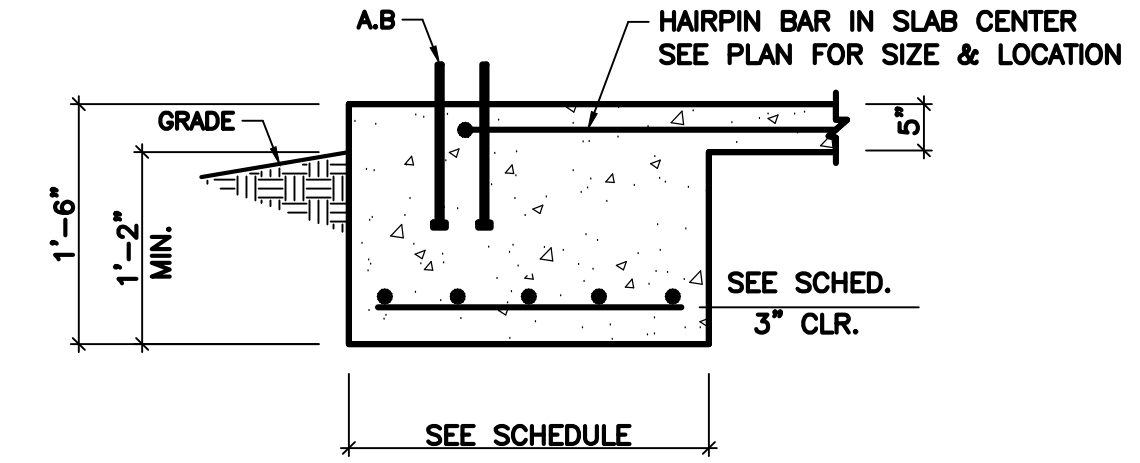


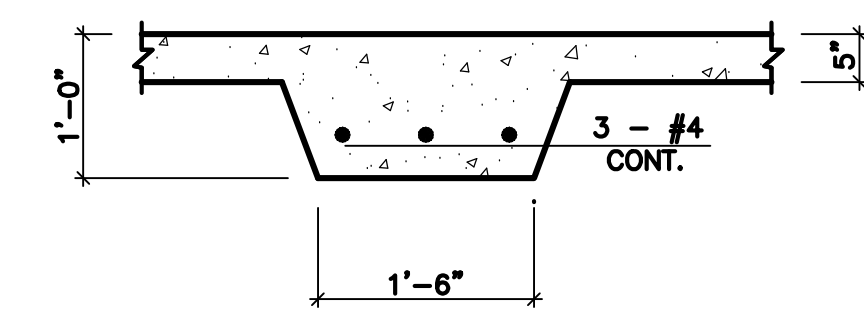
FOUNDATION PLAN
SCALE: 1/8" = 1'-0"



SECTION 1
SCALE: 3/4" = 1'-0"

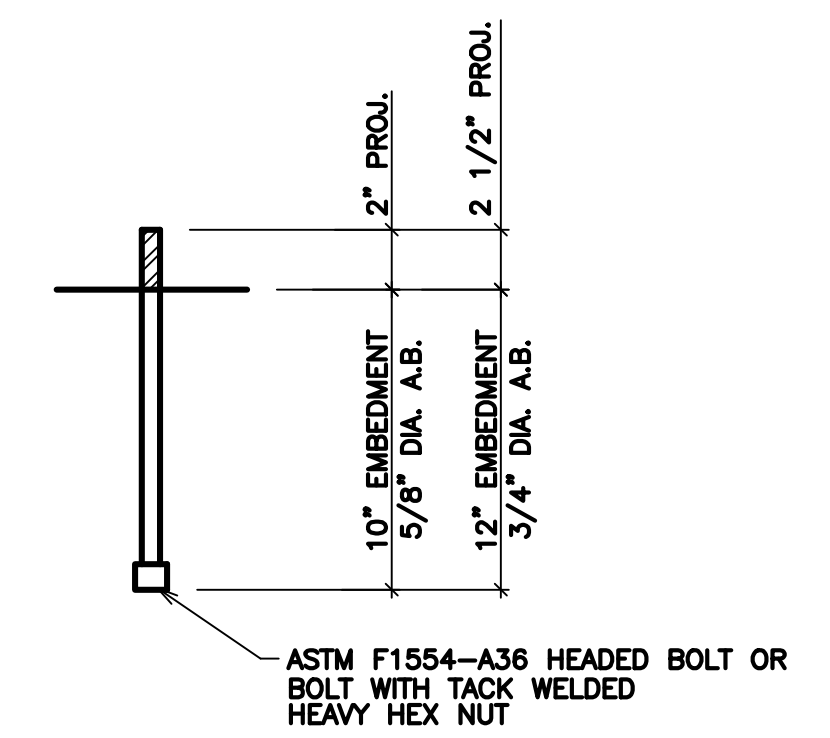


SECTION 2
SCALE: 3/4" = 1'-0"



SECTION 3
SCALE: 3/4" = 1'-0"

NOTICE TO CONTRACTOR
All construction must comply with current NC Building Codes and is subject to field inspection and verification.
Reviewed for Code Compliance
05/18/2026
Harnett COUNTY NORTH CAROLINA



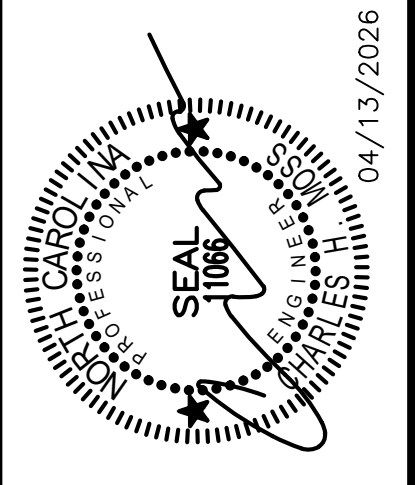
ANCHOR BOLT DETAIL

FOOTING SCHEDULE		
TYPE	SIZE	REINFORCING
FTG. (A)	2'-0" x 2'-0" x 1'-6"	3 - #4 E.W.
FTG. (B)	2'-6" x 2'-6" x 1'-6"	4 - #4 E.W.
FTG. (C)	3'-0" x 3'-0" x 1'-6"	4 - #4 E.W.
FTG. (D)	6'-6" x 6'-6" x 1'-6"	8 - #4 E.W.

GENERAL NOTES

- CONTRACTOR SHALL BE RESPONSIBLE FOR BRACING ALL WORK DURING CONSTRUCTION.
- FOOTINGS ARE DESIGNED FOR AN ALLOWABLE BEARING CAPACITY OF 2000 P.S.F.
- CONCRETE SHALL HAVE A MINIMUM 28 DAY COMPRESSIVE STRENGTH OF 3000 P.S.I. WITH A 4" MAXIMUM SLUMP. DETAILS NOT SHOWN SHALL BE ACCORDING TO ACI 318 AND ACI 301 SPECIFICATIONS FOR CONCRETE CONSTRUCTION.
 - REINFORCING STEEL SHALL BE ASTM A-615 GRADE 60 (TIES MAY BE GRADE 40)
 - W.W.F. SHALL BE ASTM A-185
 - MINIMUM LAP: #4 - 28"
 - MINIMUM LAP: #5 - 32"
 - MINIMUM COVER: 3" U.N.O.
- C.J. ON PLANS INDICATE CONTROL JOINT 1/8" x 1 1/4" DEEP SAWN WITHIN 24 HOURS AFTER PLACING CONCRETE. METAL JOINT MATERIAL MAY BE USED.
- FOUNDATION BASED ON REACTIONS FURNISHED BY ARCO BUILDING SYSTEMS INC., JOB NO. 212575, DATED 3/12/2026.

NOTE: THE ATTACHED PLAN IS FOR PLUMBING GROUNDWORK REFERENCE ONLY, AND FOR THE SHELL BUILDING ONLY. THE ATTACHED PLAN MAY NOT BE USED TO UPFIT THIS BUILDING UNTIL IT HAS BEEN ALTERED TO MEET CODE COMPLIANCE, RESUBMITTED FOR PERMITTING, AND APPROVED.



C.H. MOSS, P.E.
SOLE PROPRIETOR
P.O. BOX 28
COVINGTON, GA 30015
(770)-786-3163

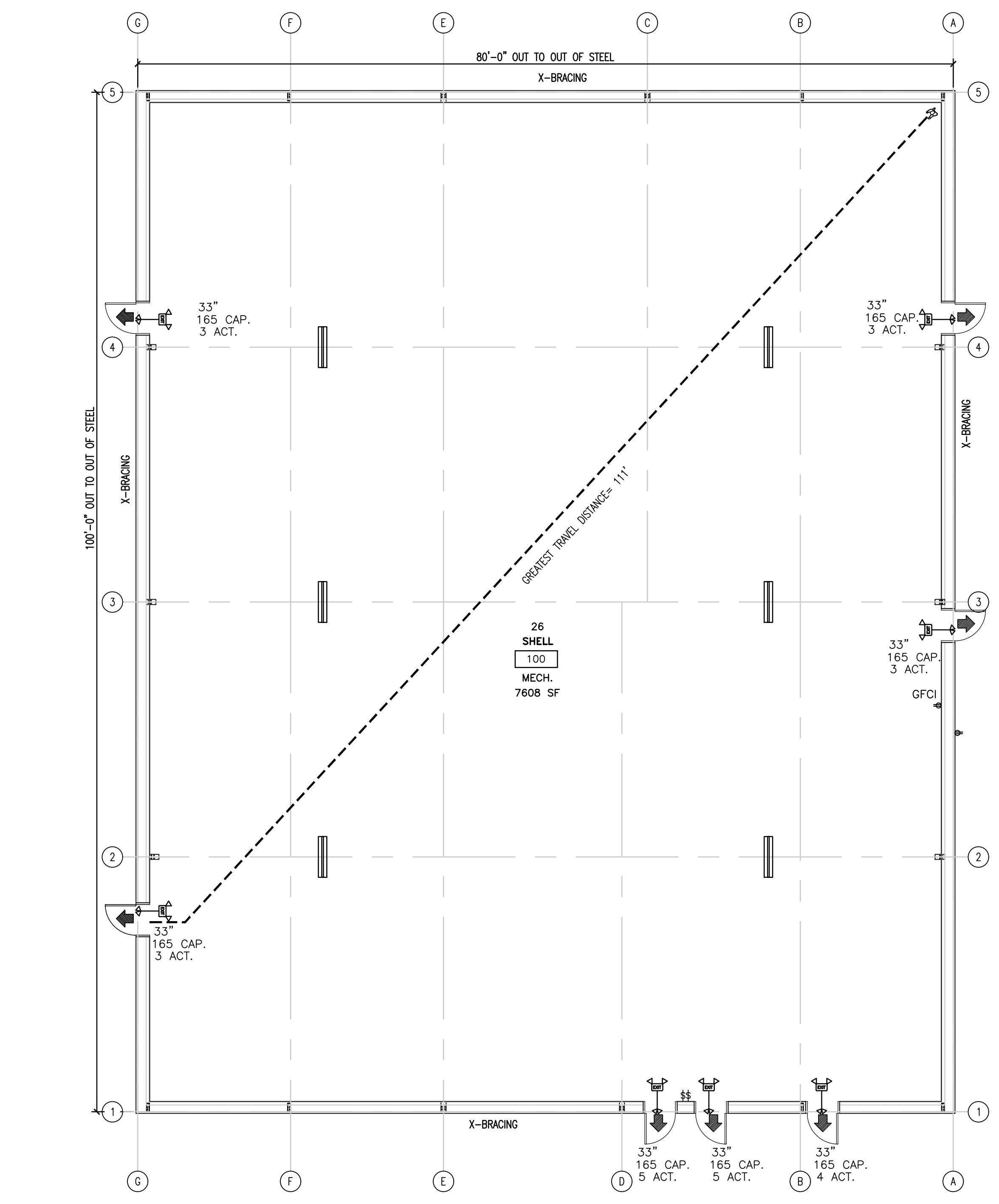
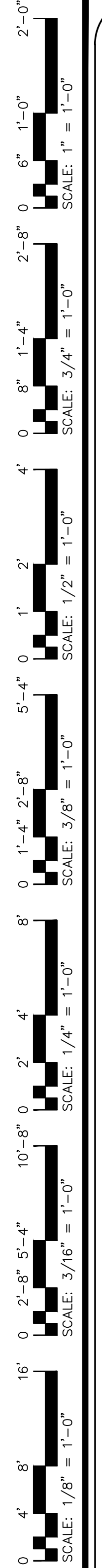
NO.	DATE	REVISION	BY

JOB NO. 212575
COMPUTED BY: ML
DRAWN BY: HM
CHECKED BY: HM
DATE: MAY 13, 2026
SCALE: 1/8" = 1'-0"

FOUNDATION PLAN FOR:
ANTIOCH BAPTIST CHURCH
LILLINGTON, NC

DRAWING NUMBER
4972

SHEET	OF:
S-1	1



1 LIFE SAFETY PLAN- SHELL BLDG. SCALE: 1/8" = 1'-0"

ASSEMBLY(A-3) OCCUPANCY:

GROSS SQUARE FOOTAGE OF BUILDING: 8,000 GSF
 TYPE OF CONSTRUCTION: III-B
 BUILDING IS A SHELL BUILDING.

OCCUPANT LOAD FOR CALCULATING EGRESS CAPACITY:
 SPACE OCCUPANCY BY FUNCTION OF SPACE
 MECHANICAL : 8,000 NSF / 300 = 26
 TOTAL OCCUPANCY BY FUNCTION= 26
 TOTAL OCCUPANCY BY AREA(COLUMN A)= 26
 TOTAL OCCUPANCY BY ANTICIPATED USE(COLUMN B)= 26
 (SEE TABLE ON THIS SHEET FOR INDIVIDUAL SPACE TOTALS)
 GREATEST TRAVEL DISTANCE SHOWN: 111 FEET. (PER 1017)
 MAXIMUM ALLOWABLE TRAVEL DISTANCE: 250 FEET (PER TABLE 1017.2)
 THE COMMON PATH OF TRAVEL IS LESS THAN 75 FEET. (PER 1029.8)
 THERE ARE NO DEAD END CORRIDORS OVER 20 FEET. (PER 1020.4)

BUILDING EXIT WIDTH CALCULATIONS:
 26 PERSONS * 0.27/OCCUPANT = 5.2' REQUIRED, 231 INCHES TOTAL PROVIDED. (PER 1005.1)
 MIN. NO. OF EXITS REQUIRED: TWO (2) (PER TABLES 1006.1 AND 1006.3.2)
 NUMBER OF EXITS PROVIDED: SEVEN (7) ACCESSIBLE
 EGRESS DOORS WILL REQUIRE PANIC HARDWARE (PER 1010.1.10)
 DOORS DO NOT HAVE DELAYED EGRESS LOCKS (PER 1010.1.9.7)
 DOORS DO NOT HAVE ELECTROMAGNETIC EGRESS LOCKS (PER 1010.1.9.9)
 DOORS DO NOT HAVE HOLD OPEN DEVICES.
 THERE ARE NO EMERGENCY ESCAPE WINDOWS (PER 1030)
 THE FIRE AREA SQUARE FOOTAGE IS: 7,608 SQUARE FEET (PER 902)
 THIS BUILDING IS NOT PROTECTED BY FIRE SPRINKLERS
 THERE IS NO FIRE ALARM SYSTEM.

SYMBOL	DESCRIPTION
F.E. (ABC)	ABC FIRE EXTINGUISHER SUGGESTED LOCATION
---	GREATEST TRAVEL DISTANCE
33" (arrow)	EXIT WIDTH, 36" - 3 = 33" CLEAR WIDTH. EXIT CAPACITY (NUMBER OF PERSONS) ACTUAL OCCUPANT LOAD FOR EXIT DOOR
(E)	EXIT SIGN WITH EMERGENCY LIGHTING
ROOM LABEL	DESCRIPTION
26 SHELL MECH. 7608 SF	OCCUPANT TOTAL ROOM NAME ROOM NUMBER FUNCTION TYPE SPACE AREA (NET SF)

SPACE NUMBER	ROOM NAME	FUNCTION OF SPACE	OCCUPANT LOAD FACTOR	ROOM AREA (NSF)	EGRESS OCCUPANCY TOTAL (A) (CALCULATED)	BUILDING OCCUPANT TOTAL (B) (ACTUAL)
100	SHELL	MECHANICAL	300	7608	26	26
TOTAL OCCUPANT COUNT CALCULATED BY SPACES				7608	26	26
THE EGRESS CAPACITY SHALL BE BASED UPON OCCUPANT LOAD OF 26 PERSONS						
(*) - DENOTES OCCUPANT NUMBER ALREADY ACCOUNTED FOR IN OCCUPANT TOTAL						



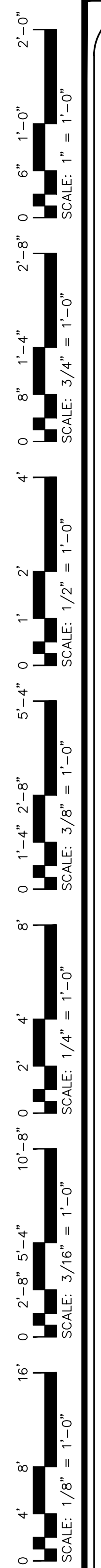
4 MAY 2026

DESIGNED BY: B. JENKINS
 DRAWN BY: JDL
 CHECKED BY: B. JENKINS
 DATE: 4 MAY 2026

FINAL DRAWING [] FOR REVIEW PURPOSES ONLY
 PRELIMINARY [] FOR DESIGN DEVELOPMENT ONLY
 FINAL DRAWING [x] FOR CONSTRUCTION
 OWNER/TENANT:
 CONTRACTOR/BUILDER:

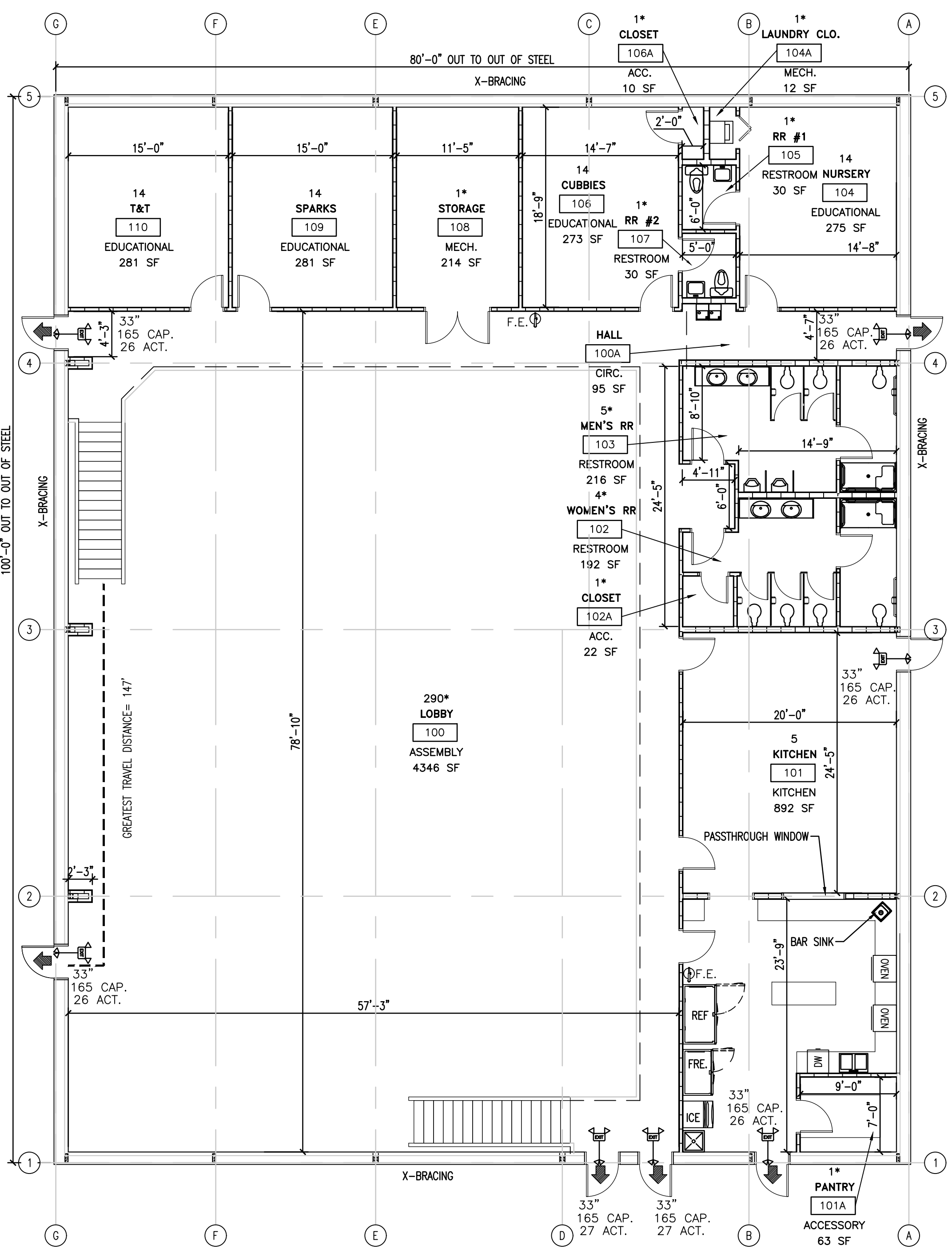
PROJECT: ANTIOCH BAPTIST CHURCH MULTIPURPOSE SHELL BUILDING
 6670 OLD US HWY 421, LILLINGTON, NC 27546
 SHEET: LIFE SAFETY PLAN - SHELL BUILDING

LSP1

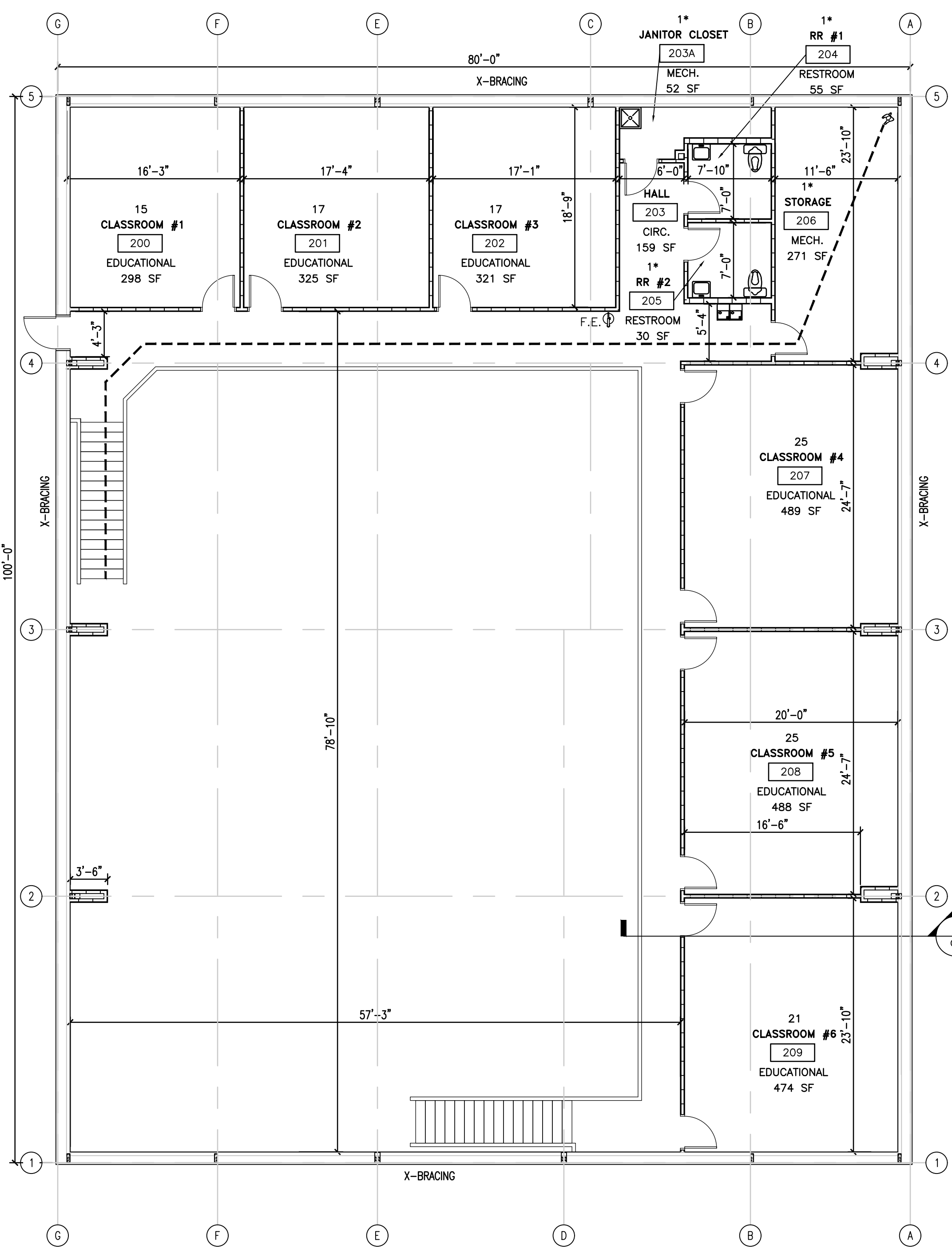


OCCUPANCY CLASSIFICATION per TABLE 1004.5

SPACE NUMBER	ROOM NAME	FUNCTION OF SPACE	OCCUPANT LOAD FACTOR	ROOM AREA (NSF)	EGRESS OCCUPANCY TOTAL (A) (CALCULATED)	BUILDING OCCUPANT TOTAL (B) (ACTUAL)
100	LOBBY	ASSEMBLY	15 NET	4346	290*	290*
100A	HALL	CIRCULATION	-	95	-	-
101	KITCHEN	KITCHEN	200	892	5	5
101A	PANTRY	ACCESSORY	300	63	1*	1*
102	WOMEN'S RR	RESTROOM	-	192	4*	4*
102A	CLOSET	ACCESSORY	300	22	1*	1*
103	MEN'S RR	RESTROOM	-	216	5*	5*
104	NURSERY	EDUCATIONAL	20 NET	275	14	14
104A	LAUNDRY CLOSET	MECHANICAL	300	12	1*	1*
105	RR #1	RESTROOM	-	30	1*	1*
106	CUBBIES	EDUCATIONAL	20 NET	273	14	14
106A	CLOSET	ACCESSORY	300	10	1*	1*
107	RR #2	RESTROOM	-	30	1*	1*
108	STORAGE	MECHANICAL	300	214	1*	1*
109	SPARKS	EDUCATIONAL	20 NET	281	14	14
110	T&T	EDUCATIONAL	20 NET	281	14	14
200	CLASSROOM #1	EDUCATIONAL	20 NET	298	15	15
201	CLASSROOM #2	EDUCATIONAL	20 NET	325	17	17
202	CLASSROOM #3	EDUCATIONAL	20 NET	321	17	17
203	HALL	CIRCULATION	-	159	-	-
203A	JANITOR CLOSET	ACCESSORY	300	52	1*	1*
204	RR #1	RESTROOM	-	55	1*	1*
205	RR #2	RESTROOM	-	55	1*	1*
206	STORAGE	MECHANICAL	300	271	1*	1*
207	CLASSROOM #4	EDUCATIONAL	20 NET	489	25	25
208	CLASSROOM #5	EDUCATIONAL	20 NET	488	25	25
209	CLASSROOM #6	EDUCATIONAL	20 NET	474	24	24
TOTAL OCCUPANT COUNT CALCULATED BY SPACES				10219	184	184
THE EGRESS CAPACITY SHALL BE BASED UPON OCCUPANT LOAD OF 184 PERSONS						
(*) - DENOTES OCCUPANT NUMBER ALREADY ACCOUNTED FOR IN OCCUPANT TOTAL						



1 LIFE SAFETY PLAN-GROUND FLOOR
 LSP2 SCALE: 1/8" = 1'-0"



2 LIFE SAFETY PLAN-SECOND FLOOR
 LSP2 SCALE: 1/8" = 1'-0"

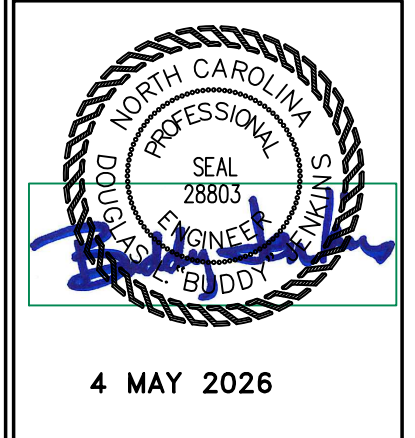
ASSEMBLY(A-3) OCCUPANCY:

GROSS SQUARE FOOTAGE OF BUILDING: 8,000 GSF
 TYPE OF CONSTRUCTION: III-B
 BUILDING TO BE USED FOR FUTURE UPFIT

OCCUPANT LOAD FOR CALCULATING EGRESS CAPACITY:
 SPACE OCCUPANCY BY FUNCTION OF SPACE
 ASSEMBLY : 8,000 NSF / 7 = 1,143
 TOTAL OCCUPANCY BY FUNCTION= 1,143
 TOTAL OCCUPANCY BY AREA(COLUMN A)= 184
 TOTAL OCCUPANCY BY ANTICIPATED USE(COLUMN B)= 184
 (SEE TABLE ON THIS SHEET FOR INDIVIDUAL SPACE TOTALS)
 GREATEST TRAVEL DISTANCE SHOWN: 147 FEET. (PER 1017)
 MAXIMUM ALLOWABLE TRAVEL DISTANCE: 250 FEET (PER TABLE 1017.2)
 THE COMMON PATH OF TRAVEL IS LESS THAN 75 FEET. (PER 1029.8)
 THERE ARE NO DEAD END CORRIDORS OVER 20 FEET. (PER 1020.4)

BUILDING EXIT WIDTH CALCULATIONS:
 184 PERSONS * 0.2"/OCCUPANT = 36.8" REQUIRED, 231 INCHES TOTAL PROVIDED. (PER 1005.1)
 MIN. NO. OF EXITS REQUIRED: TWO (2) (PER TABLES 1006.1 AND 1006.3.2)
 NUMBER OF EXITS PROVIDED: SEVEN (7) ACCESSIBLE
 EGRESS DOORS WILL REQUIRE PANIC HARDWARE. (PER 1010.1.10)
 DOORS DO NOT HAVE DELAYED EGRESS LOCKS (PER 1010.1.9.7)
 DOORS DO NOT HAVE ELECTROMAGNETIC EGRESS LOCKS (PER 1010.1.9.9)
 DOORS DO NOT HAVE HOLD OPEN DEVICES.
 THERE ARE NO EMERGENCY ESCAPE WINDOWS (PER 1030)
 THE FIRE AREA SQUARE FOOTAGE IS: 10,219 SQUARE FEET (PER 902)
 THIS BUILDING IS NOT PROTECTED BY FIRE SPRINKLERS
 THERE IS NO FIRE ALARM SYSTEM.
 NO. OF FIRE EXTINGUISHERS PROVIDED: THREE (3) FIRE EXTINGUISHERS
 FIRE EXTINGUISHER FOR CLASS A FIRE HAZARDS REQUIRE NO GREATER THAN 75 FT
 OF MAXIMUM TRAVEL DISTANCE IN LOW, ORDINARY AND EXTRA HAZARD OCCUPANCY.

SYMBOL	DESCRIPTION
F.E. ⊕	ABC FIRE EXTINGUISHER SUGGESTED LOCATION
---	GREATEST TRAVEL DISTANCE
33" 165 CAP. 22 ACT.	EXIT WIDTH, 36" - 3" = 33" CLEAR WIDTH. EXIT CAPACITY (NUMBER OF PERSONS) ACTUAL OCCUPANT LOAD FOR EXIT DOOR
⊕	EXIT SIGN WITH EMERGENCY LIGHTING
ROOM LABEL	DESCRIPTION
5	OCCUPANT TOTAL
101	ROOM NAME
KITCHEN	ROOM NUMBER
892 SF	FUNCTION TYPE
	SPACE AREA (NET SF)



DESIGNED BY: B. JENKINS
 DRAWN BY: JDL
 CHECKED BY: B. JENKINS
 DATE: 4 MAY 2026

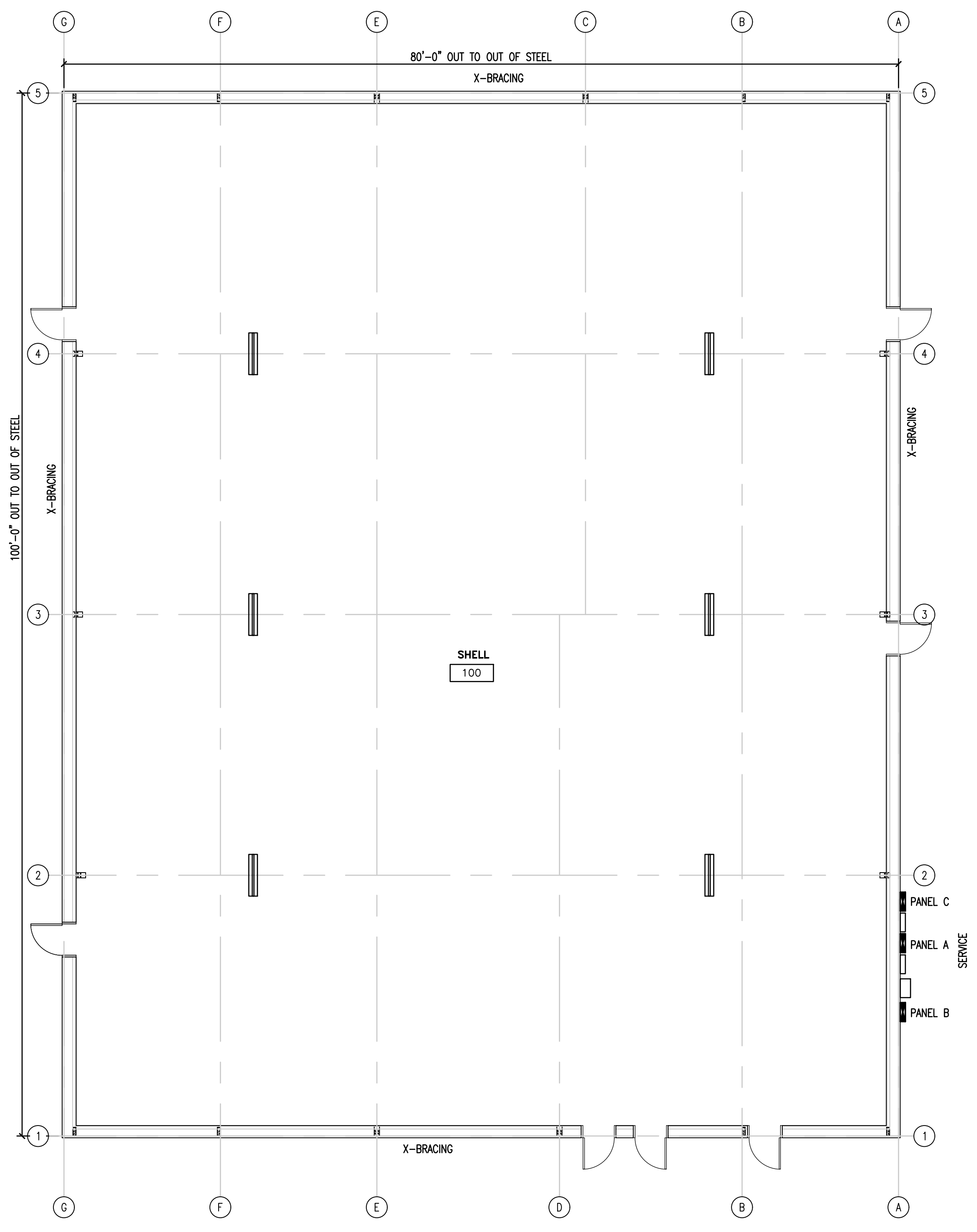
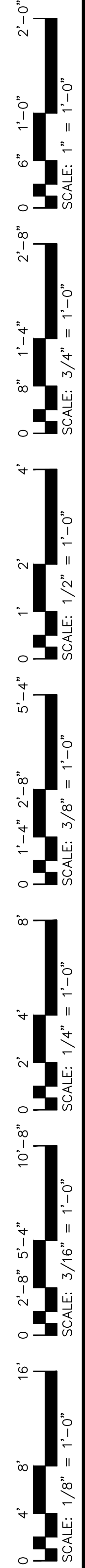
FINAL DRAWING [] FOR REVIEW PURPOSES ONLY
 PRELIMINARY [] FOR DESIGN DEVELOPMENT ONLY
 FINAL DRAWING [] FOR CONSTRUCTION

OWNER/TENANT:
 CONTRACTOR/BUILDER:

PROJECT: **ANTIOCH BAPTIST CHURCH MULTIPURPOSE SHELL BUILDING**
 6670 OLD US HWY 421, LILLINGTON, NC 27546

SHEET: **LIFE SAFETY PLAN - FUTURE UPFIT**

Drawing File: H:\2024\Antioch\DWG\Antioch_Ant026.dwg
Printed Date: 05/04/2024 10:52am



1 G1 GROUND FLOOR PLAN- SHELL BLDG. SCALE: 1/8" = 1'-0"



4 MAY 2026

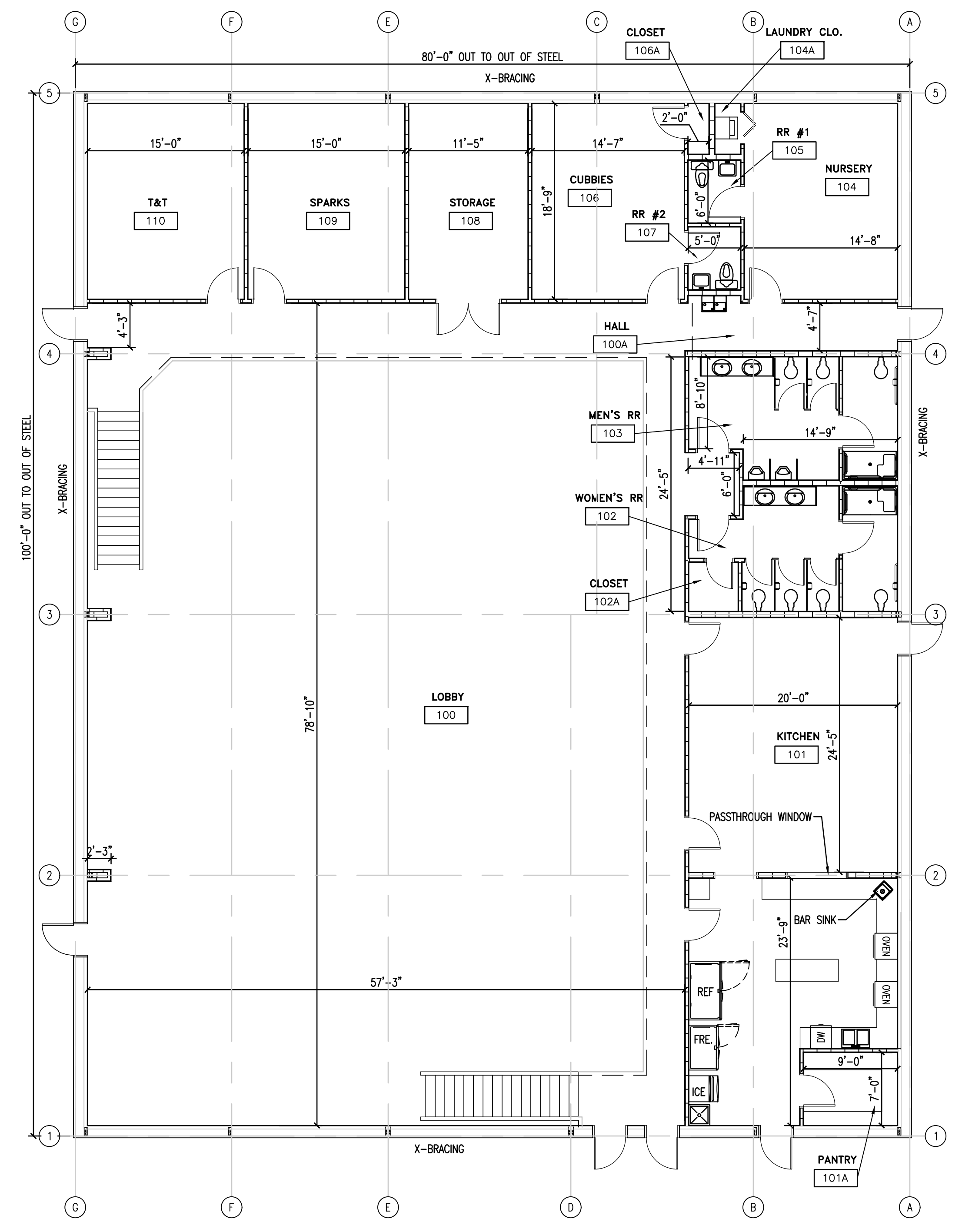
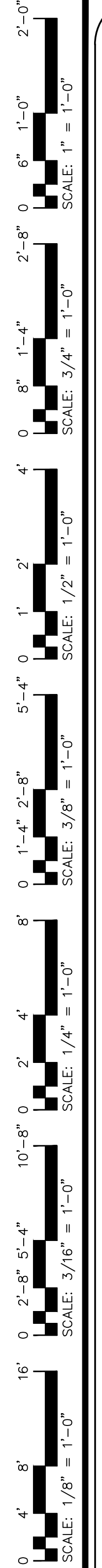
DESIGNED BY:	B. JENKINS
DRAWN BY:	JDL
CHECKED BY:	B. JENKINS
DATE:	4 MAY 2026

FINAL DRAWING <input type="checkbox"/> FOR REVIEW PURPOSES ONLY	OWNER/TENANT:	CONTRACTOR/BUILDER:
PRELIMINARY <input type="checkbox"/> FOR DESIGN DEVELOPMENT ONLY		
FINAL DRAWING <input checked="" type="checkbox"/> FOR CONSTRUCTION		

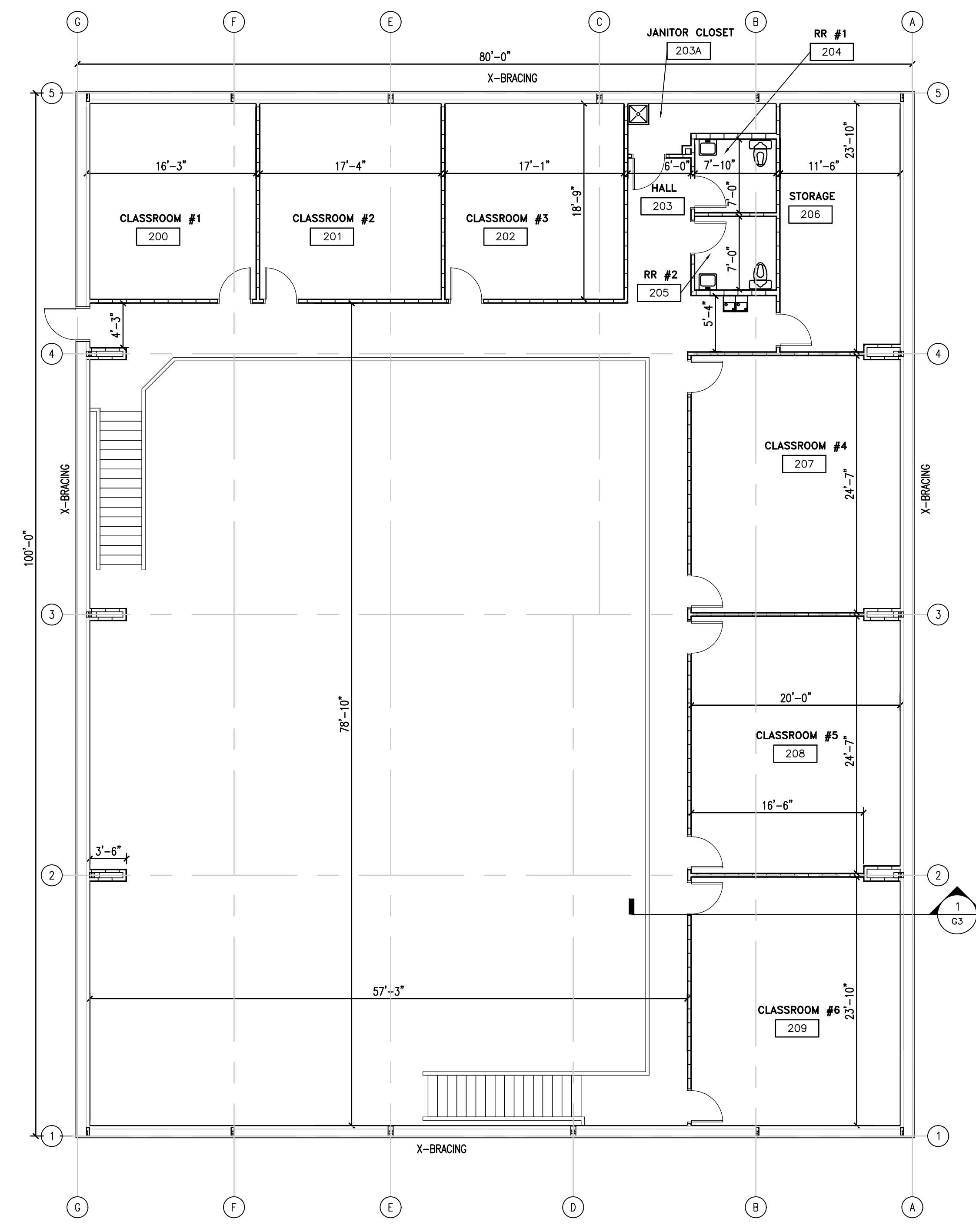
PROJECT: **ANTIOCH BAPTIST CHURCH MULTIPURPOSE SHELL BUILDING**
6670 OLD US HWY 421, LILLINGTON, NC 27546

SHEET: **FLOOR PLANS - SHELL BUILDING**

G1



1 G2 GROUND FLOOR PLAN- FUTURE UPFIT
 SCALE: 1/8" = 1'-0"



2 G2 SECOND FLOOR PLAN- FUTURE UPFIT
 SCALE: 1/8" = 1'-0"

Drawing File: H:\2024\Antioch\DWG\Antioch_Antioch_05.dwg
 Project Name: Antioch
 Date: 05/04/2024



4 MAY 2026

DESIGNED BY: B. JENKINS
 DRAWN BY: JDL
 CHECKED BY: B. JENKINS
 DATE: 4 MAY 2026

FINAL DRAWING FOR REVIEW PURPOSES ONLY
 PRELIMINARY FOR DESIGN DEVELOPMENT ONLY
 FINAL DRAWING FOR CONSTRUCTION
 OWNER/TENANT:
 CONTRACTOR/BUILDER:

PROJECT: ANTIOCH BAPTIST CHURCH MULTIPURPOSE SHELL BUILDING
 6670 OLD US HWY 421, LILLINGTON, NC 27546
 SHEET:
 FLOOR PLANS - FUTURE UPFIT

G2

2'-0" 1'-0" 6" 1'-0" 2'-8" 0 6" 1'-4" 2'-8" 0 1'-0" 4" 0 1'-4" 2'-8" 0 1'-0" 8" 0 1'-4" 2'-8" 0 1'-0" 10'-8" 0 2'-8" 5'-4" 0 1'-0" 16" 0 2'-8" 5'-4" 0 1'-0" 4" 8" 0 1'-0" SCALE: 1/8" = 1'-0"

NEW PANEL "A"

PHASE 1 WIRE 3 VOLTS 240/120 MAIN 200A MLO
 TYPE NEMA 1 MOUNTING SURFACE ENCLOSURE TYPE 1
 SHORT CKT. RATING - RMS SYM.
 GROUND TERMINAL BAR NEUTRAL TERMINAL BAR

PHASE LOADING		DESCRIPTION	CKT. TYPE	WIRE SIZE	CKT. BKR. TRIP	CKT. NO.	A B		DESCRIPTION	PHASE LOADING			
A	B						A	B		A	B		
0.264		LIGHTING-BAY LIGHTS	C	#12	20/1	1			RECP.- GCFI		0.18		
	0.14	LIGHTING-EMERGENCY LIGHTS	*	#12	20/1	3			RECP.- EXTERIOR		0.18		
		SPACE				5							
		SPACE				6							
		SPACE				7							
		SPACE				8							
		SPACE				9							
		SPACE				10							
		SPACE				11							
		SPACE				12							
		SPACE				13							
		SPACE				14							
		SPACE				15							
		SPACE				16							
		SPACE				17							
		SPACE				18							
		SPACE				19							
		SPACE				20							
		SPACE				21							
		SPACE				22							
		SPACE				23							
		SPACE				24							
		SPACE				25							
		SPACE				26							
		SPACE				27							
		SPACE				28							
		SPACE				29							
		SPACE				30							
		SPACE				31							
		SPACE				32							
		SPACE				33							
		SPACE				34							
		SPACE				35							
		SPACE				36							
		SPACE				37							
		SPACE				38							
		SPACE				39							
		SPACE				40							
		SPACE				41							
		SPACE				42							
0.264	0.14	SUB-TOTAL (VA)					SUB-TOTAL (VA)					0.18	0.18

C CONTINUOUS LOAD E ESTIMATED LOAD
 H HVAC LOAD * LOCKABLE
 N NON-CONTINUOUS LOAD
 R RECEPTACLE LOAD
 K KITCHEN LOAD

TOTAL CONNECTED LOAD = 0.764 KVA AMPS = 3.18

TOTAL OF 42 SPACES

ELECTRICAL NOTES:
 ALL WORK SHALL BE IN ACCORDANCE WITH 2020 NEC.

WIRE AND CABLE SHALL BE INSULATED, TYPE THHN, 600 VOLTS, WITH COPPER CONDUCTORS. CONDUCTOR SIZES NO. 8 AWG AND LARGER MAY BE STRANDED. CONDUCTOR SIZES NO. 10 AWG AND SMALLER MAY BE SOLID OR STRANDED.

ROMEX CAN NOT BE USED IN THIS PROJECT. MC CAN BE USED.

EMT SHALL BE GALVANIZED STEEL TUBING 1/2-INCH MINIMUM SIZE, EQUAL TO ELECTRINITE BRAND OR APPROVED AND USED ONLY WITH HEXAGONAL ALL STEEL COMPRESSION FITTINGS. MC CABLE MAY BE SUBSTITUTED FOR CONDUIT RACEWAYS WHERE PERMITTED BY THE CODE, AND APPROVED BY OWNER.

PLASTIC CONDUIT SHALL BE RIGID, 3/4-INCH MINIMUM, NONMETALLIC, HEAVY DUTY, POLYVINYLCHLORIDE (PVC), TYPE I WILL BE USED FOR CONCRETE ENCASEMENT. FITTINGS SHALL BE THE SAME MATERIALS AND MANUFACTURERS AS THE PLASTIC CONDUIT.

FLEXIBLE METAL CONDUIT SHALL BE 1/2-INCH MINIMUM SINGLE STRIP, STEEL, HOT DIPPED GALVANIZED INSIDE AND OUTSIDE. MAXIMUM LENGTH OF 72 INCHES FOR LIGHTING, AND 36 INCHES FOR MOTORS. FLEXIBLE METAL CONDUIT SHALL BE LIQUID TIGHT OR WATER TIGHT WITH PVC JACKET WHERE USED IN DAMP, WET, OR OUTSIDE AREAS, AND LIQUID TIGHT OR WATER TIGHT CONNECTORS SHALL BE USED.

NO RECEPTACLES OR TELEPHONE OUTLETS ARE TO BE MOUNTED BACK TO BACK. KEEP AT LEAST 1 1/2 INCHES BETWEEN RECEPTACLES AND TELEPHONE OUTLETS.

ALL CONDUCTORS SHALL BE COPPER WITH A MINIMUM SIZE OF #12 AWG EXCEPT FOR FIRE ALARM. THESE CONDUCTORS SHOULD COMPLY WITH NFPA REQUIREMENTS. FEEDERS SHALL BE ALUMINUM WHERE NOTED.

THE ELECTRICAL CONTRACTOR SHALL ALIGN ALL FIXTURES, SMOKE DETECTORS, CEILING DIFFUSERS, ETC. AS REQUIRED TO PROVIDE A UNIFORM PRESENTATION. FOLLOW THE REFLECTED CEILING PLAN IF PROVIDED.

CIRCUIT BREAKERS AND WIRE ARE SIZED FOR SPECIFIC EQUIPMENT. BEFORE ORDERING WIRE, BREAKERS, FIXTURES, CONDUIT, AND ETC. FOR THIS PROJECT, THE ELECTRICAL CONTRACTOR SHALL COORDINATE WITH THE OTHER CONTRACTORS ON THE JOB AND VERIFY THE ELECTRICAL DATA FOR THE EQUIPMENT THAT WILL BE ACTUALLY INSTALLED. RECOMPUTE WIRE AND BREAKER SIZES IF REQUIRED BY THE NEC.

THE MOUNTING HEIGHTS AND LOCATIONS OF ALL WALL MOUNTED OUTLETS AND JUNCTION BOXES SHALL BE REVIEWED AND COORDINATED WITH THE GENERAL CONTRACTOR AND OWNER PRIOR TO INSTALLATION FOR USE WITH ACTUAL EQUIPMENT.

ALL LIGHT SWITCHES, RECEPTACLES, WALL PLATES, TELEPHONE/COMPUTER OUTLET BOXES, AND CABLE OUTLET BOXES SHALL BE WHITE.

EACH CONTRACTOR WILL PROVIDE HIS OWN SUPPORT OF ALL DEVICES AND EQUIPMENT PROVIDED IN HIS CONTRACT AND SHALL SUPPORT SUCH EQUIPMENT PER APPROVED GOVERNING CODES. UNACCEPTABLE WORKMANSHIP OR MATERIALS SHALL BE REPLACED AT THE ELECTRICAL CONTRACTORS EXPENSE.

THE ELECTRICAL CONTRACTOR SHALL REFER TO THE DRAWINGS FOR FLOOR PLAN AND BUILDING ELEVATION DIMENSIONS.

THE ELECTRICAL CONTRACTOR SHALL COORDINATE WITH OTHER TRADES INVOLVED IN THIS PROJECT PRIOR TO INSTALLATION OF HIS EQUIPMENT, SO AS TO AVOID CONFLICTS DURING CONSTRUCTION AND ALLOW FOR OPTIMUM WORKING SPACE AND MAINTENANCE. THINK OF OTHER CONTRACTORS AND THEIR REQUIREMENTS IN VERTICAL CHASES AND WALL MOUNT SPACE. ALL CONTRACTORS TO FOLLOW THIS ORDER OF PRIORITY:

1. STORM AND SANITARY SEWER LINES
2. DUCTWORK AND HVAC SYSTEMS
3. HOT AND COLD WATER LINES
4. RIGID CONDUIT
5. CABLE

THE ELECTRICAL CONTRACTOR TO ORGANIZE HIS CONDUIT, WIRE, AND CABLE RUNS IN ATTIC SPACES AND ABOVE CEILINGS, MAKE RUNS PARALLEL, PERPENDICULAR, AND GROUPED TOGETHER WHERE POSSIBLE. LOCATE MAJOR GROUPINGS OVER HALLWAYS AND AREAS OF PUBLIC ACCESS. FREE RUNS OF PHONE, TELEVISION, SECURITY, ALARMS, AND OTHER CABLES IS NOT ACCEPTABLE.

ALL DISCONNECT SWITCHES AND BREAKER SIZES SHOWN FOR MECHANICAL EQUIPMENT, KITCHEN EQUIPMENT, AND ETC. SHALL BE VERIFIED BEFORE PURCHASE AND INSTALLATION OF SAID EQUIPMENT WITH THE EQUIPMENT SUPPLIER AND MECHANICAL CONTRACTOR. WHERE EQUIPMENT PENETRATES EXTERIOR WALLS OR ROOF, THEY SHALL BE PROPERLY SEALED.

EXHAUST FANS ARE TO BE PROVIDED AND INSTALLED BY THE MECHANICAL CONTRACTOR, AND ELECTRICAL WIRING BY THE ELECTRICAL CONTRACTOR.

THE ELECTRICAL CONTRACTOR SHALL PROVIDE NAMEPLATES FOR IDENTIFICATION OF ALL EQUIPMENT, SWITCHES, PANELS, ETC. THE NAMEPLATES SHALL BE LAMINATED PHENOLIC PLASTIC, BLACK FRONT AND BACK WITH WHITE CORE, WHITE ENGRAVED LETTERS (1/4 INCH MINIMUM), ETCHED INTO THE WHITE CORE. NAME TAGS TO BE MOUNTED WITH SELF-TAPPING SHEET METAL SCREWS.

THE ELECTRICAL CONTRACTOR IS NOT TO SCALE THE DRAWINGS FOR RECEPTACLES AND LIGHT FIXTURES TO BE INSTALLED. THE DRAWINGS ARE FOR DIAGRAMMATIC PURPOSES ONLY TO SHOW GENERAL LOCATION. THE ELECTRICAL CONTRACTOR TO COORDINATE EXACT LOCATION OF RECEPTACLES AND LIGHT FIXTURES WITH THE GENERAL CONTRACTOR AND/OR CASEWORK DRAWINGS.

ALL LIGHT SWITCHES AND RECEPTACLES SHALL BE RATED FOR 20 AMP UNLESS NOTED OTHERWISE.

NEW PANEL "B"

PHASE 1 WIRE 3 VOLTS 240/120 MAIN 200A MCB
 TYPE NEMA 1 MOUNTING SURFACE ENCLOSURE TYPE 1
 SHORT CKT. RATING - RMS SYM.
 GROUND TERMINAL BAR NEUTRAL TERMINAL BAR

PHASE LOADING		DESCRIPTION	CKT. TYPE	WIRE SIZE	CKT. BKR. TRIP	CKT. NO.	A B		DESCRIPTION	PHASE LOADING			
A	B						A	B		A	B		
		SPACE				1							
		SPACE				2							
		SPACE				3							
		SPACE				4							
		SPACE				5							
		SPACE				6							
		SPACE				7							
		SPACE				8							
		SPACE				9							
		SPACE				10							
		SPACE				11							
		SPACE				12							
		SPACE				13							
		SPACE				14							
		SPACE				15							
		SPACE				16							
		SPACE				17							
		SPACE				18							
		SPACE				19							
		SPACE				20							
		SPACE				21							
		SPACE				22							
		SPACE				23							
		SPACE				24							
		SPACE				25							
		SPACE				26							
		SPACE				27							
		SPACE				28							
		SPACE				29							
		SPACE				30							
		SPACE				31							
		SPACE				32							
		SPACE				33							
		SPACE				34							
		SPACE				35							
		SPACE				36							
		SPACE				37							
		SPACE				38							
		SPACE				39							
		SPACE				40							
		SPACE				41							
		SPACE				42							
		SUB-TOTAL (VA)					SUB-TOTAL (VA)						

C CONTINUOUS LOAD E ESTIMATED LOAD
 H HVAC LOAD
 N NON-CONTINUOUS LOAD
 R RECEPTACLE LOAD
 K KITCHEN LOAD

TOTAL CONNECTED LOAD = - KVA AMPS = -

TOTAL OF 42 SPACES

NEW PANEL "C"

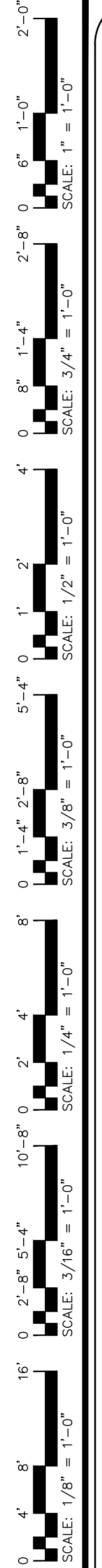
PHASE 1 WIRE 3 VOLTS 240/120 MAIN 200A MLO
 TYPE NEMA 1 MOUNTING SURFACE ENCLOSURE TYPE 1
 SHORT CKT. RATING - RMS SYM.
 GROUND TERMINAL BAR NEUTRAL TERMINAL BAR

PHASE LOADING		DESCRIPTION	CKT. TYPE	WIRE SIZE	CKT. BKR. TRIP	CKT. NO.	A B		DESCRIPTION	PHASE LOADING			
A	B						A	B		A	B		
		SPACE				1							
		SPACE				2							
		SPACE				3							
		SPACE				4							
		SPACE				5							
		SPACE				6							
		SPACE				7							
		SPACE				8							
		SPACE				9							
		SPACE				10							
		SPACE				11							
		SPACE				12							
		SPACE				13							
		SPACE				14							
		SPACE				15							
		SPACE				16							
		SPACE				17							
		SPACE				18							
		SPACE				19							
		SPACE				20							
		SPACE				21							
		SPACE				22							
		SPACE				23							
		SPACE				24							
		SPACE				25							
		SPACE				26							
		SPACE				27							
		SPACE				28							
		SPACE				29							
		SPACE				30							
		SPACE				31							
		SPACE				32							
		SPACE				33							
		SPACE				34							
		SPACE				35							
		SPACE				36							
		SPACE				37							
		SPACE				38							
		SPACE				39							
		SPACE				40							
		SPACE				41							
		SPACE				42							
		SUB-TOTAL (VA)					SUB-TOTAL (VA)						

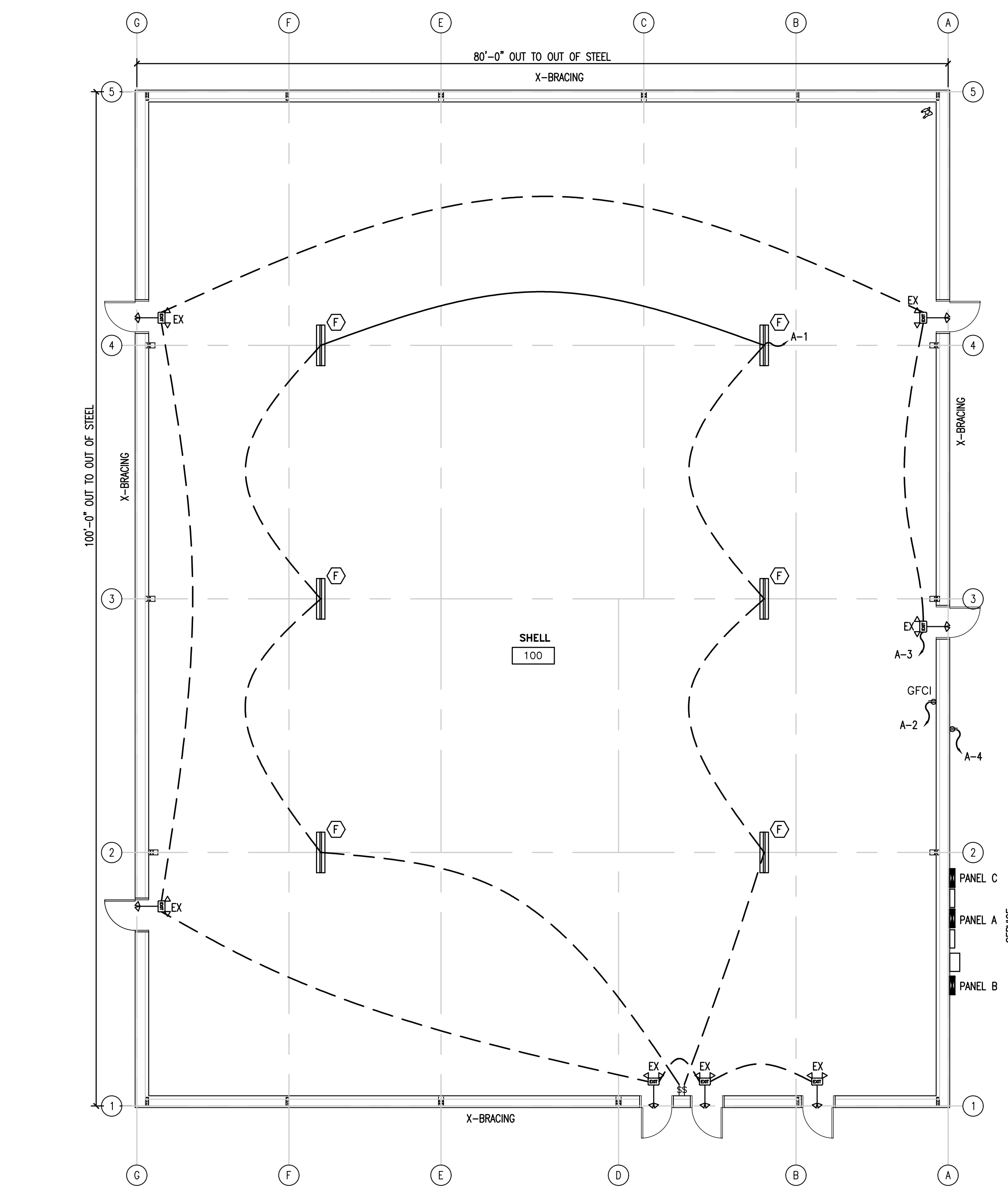
C CONTINUOUS LOAD E ESTIMATED LOAD
 H HVAC LOAD
 N NON-CONTINUOUS LOAD
 R RECEPTACLE LOAD
 K KITCHEN LOAD

TOTAL CONNECTED LOAD = - KVA AMPS = -

T



Drawing File: H:\2024\Projects\Antioch\Antioch.dwg
 Project Name: Antioch
 Date: 05/04/2024



1
E2
ELECTRICAL- LIGHTING & POWER PLAN

 0 4' 8' 16'
 SCALE: 1/8" = 1'-0"

LIGHT FIXTURE SCHEDULE												
TAG	DESCRIPTION	SIZE	MOUNTING	LENS	COLOR	LUMENS	BULB	BALLAST TYPE	VOLTAGE	WATTAGE	MANU/MODEL NUMBER	REMARKS
F	LED LOW BAY LINEAR	10" X 48"	PENDANT	N/A	5000 K	6000	LED	LED DRIVER	120	44	LITHONIA NO. UFIT L46 6000LM SEF 50K OR EQUAL	
EX	EXIT SIGN/EMERGENCY LIGHT COMBO	N/A	WALL	SINGLE	N/A	N/A	LED LIGHT	LED DRIVER	120	20	LITHONIA LHQM LED R HO M6 OR EQUAL	6 VOLT NICAD BATTERY, (2) REMOTE HEADS; WIREGUARD IN GYMNASIUM AREA

ELECTRICAL LEGEND	
	DUPLEX RECEPTACLE; MOUNT AT 18" A.F.F.
	DUPLEX RECEPTACLE; GROUND FAULT CIRCUIT INTERRUPTER
	SINGLE POLE POWER/LIGHTING HOMERUN
	POWER PANEL
	SWITCH
	EXIT/EMERGENCY COMBO
	REMOTE HEAD FOR EXIT LIGHTING

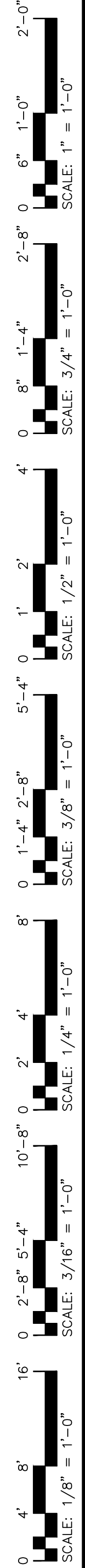


4 MAY 2026

DESIGNED BY:	B. JENKINS	DRAWN BY:	JDL
CHECKED BY:	B. JENKINS	DATE:	4 MAY 2026

FINAL DRAWING <input type="checkbox"/> FOR REVIEW PURPOSES ONLY	PRELIMINARY <input type="checkbox"/> FOR DESIGN DEVELOPMENT ONLY	FINAL DRAWING <input checked="" type="checkbox"/> FOR CONSTRUCTION
OWNER/TENANT:		CONTRACTOR/BUILDER:

PROJECT: **ANTIOCH BAPTIST CHURCH MULTIPURPOSE SHELL BUILDING**
 6670 OLD US HWY 421, LILLINGTON, NC 27546
 SHEET: **ELECTRICAL- LIGHTING & POWER PLAN**



SCALE: 1/2" = 1'-0"

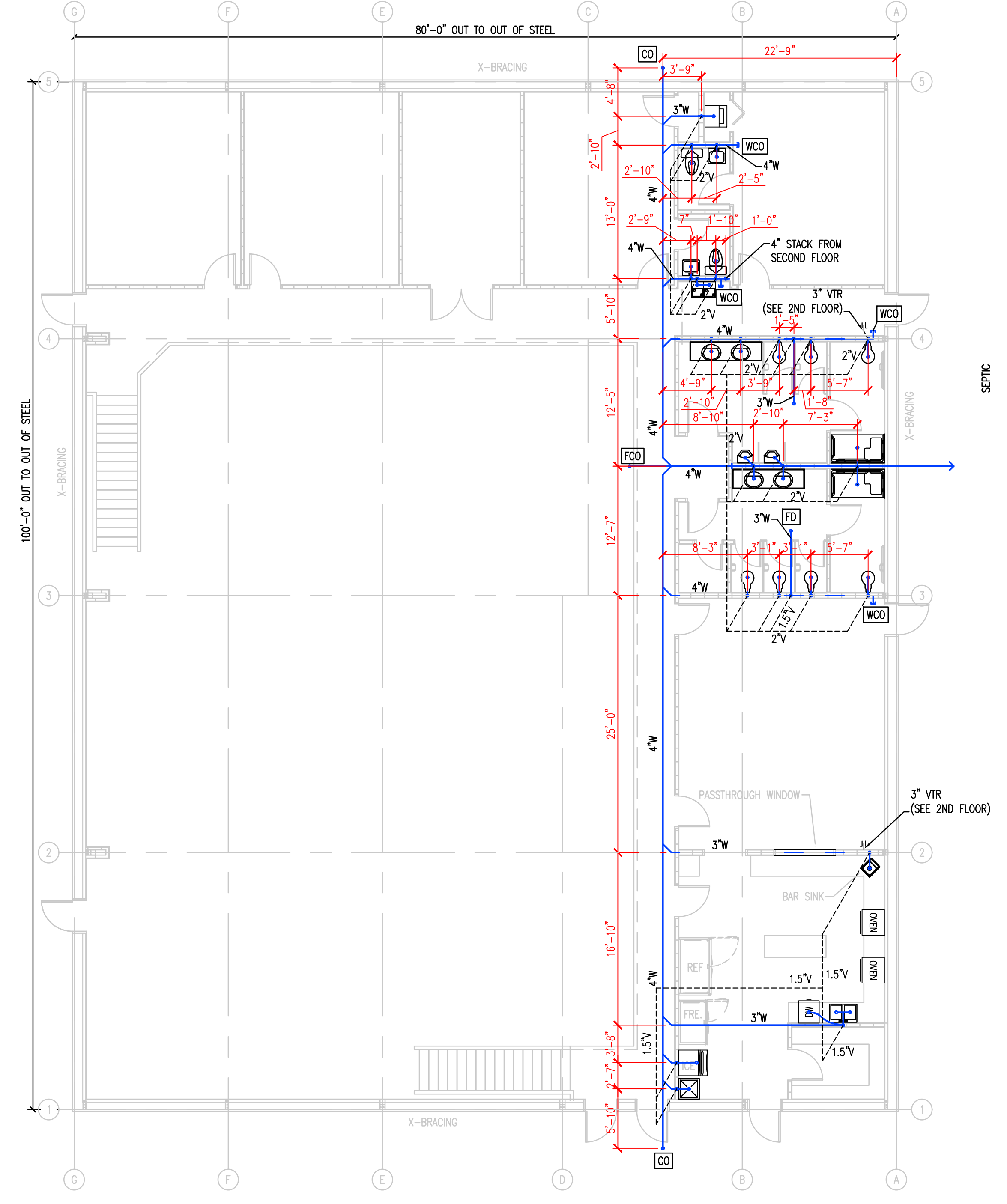
SCALE: 3/4" = 1'-0"

SCALE: 1/4" = 1'-0"

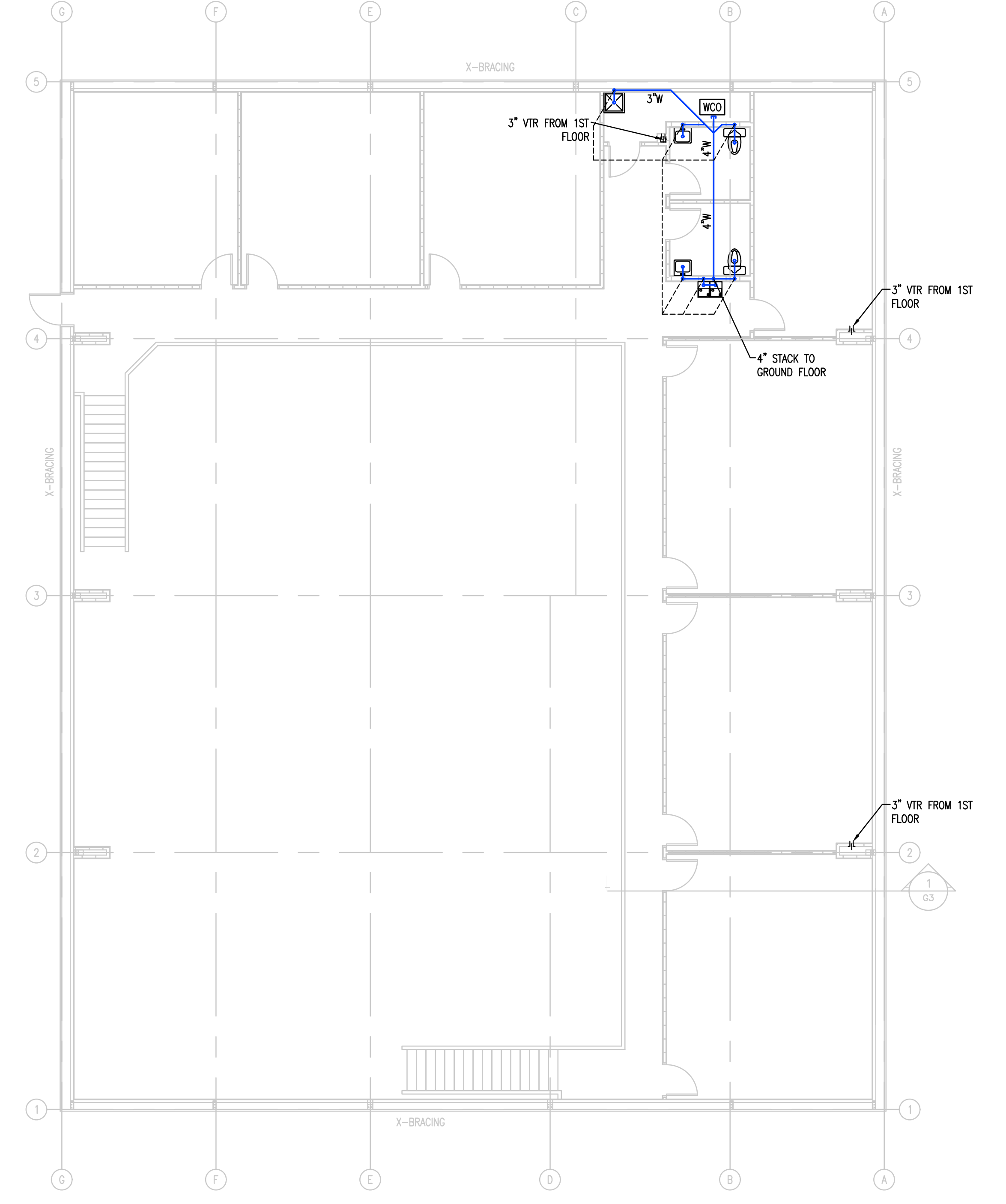
SCALE: 3/16" = 1'-0"

SCALE: 1/8" = 1'-0"

SCALE: 1/8" = 1'-0"



1 FIRST FLOOR WASTE VENT PLAN
SCALE: 1/8" = 1'-0"



NOTE: WALLS SHOWN ARE FOR FUTURE UPFIT ONLY, IN-SLAB PLUMBING.

2 SECOND FLOOR WASTE VENT PLAN
SCALE: 1/8" = 1'-0"

Drawing File: H:\2024\Antioch\Antioch_Antioch_Antioch.dwg
Project Name: Antioch, 2024 - 5/20/24



4 MAY 2026

DESIGNED BY: B. JENKINS
DRAWN BY: JDL
CHECKED BY: B. JENKINS
DATE: 4 MAY 2026

FINAL DRAWING FOR REVIEW PURPOSES ONLY
PRELIMINARY FOR DESIGN DEVELOPMENT ONLY
FINAL DRAWING FOR CONSTRUCTION
OWNER/TENANT:
CONTRACTOR/BUILDER:

PROJECT: ANTIOCH BAPTIST CHURCH MULTIPURPOSE SHELL BUILDING
6670 OLD US HWY 421, LILLINGTON, NC 27546
SHEET: SANITARY WASTE VENT PLAN

P1