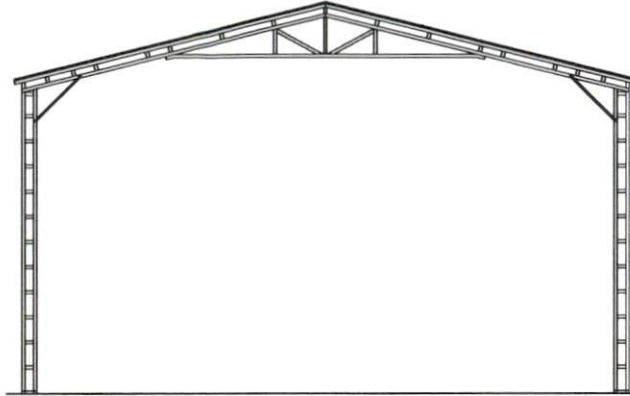




Roger Sullivan

03/11/2026 11:07:31 AM



OPEN GABLE END BUILDING (HIGH CLEARANCE)

MAXIMUM >31' TO <40' WIDE x <20' MAXIMUM EAVE HEIGHT (BOX FRAME) (UP TO) 155 M.P.H. WIND ZONE -
35 P.S.F. SNOW LOAD - (UP TO) SEISMIC CATEGORY D/D2

FOR:

FREDDY CASTRO GUERRA
34 N MCKINLEY ST
COATS, NC 27521



ISSUE DATE: 01/31/2026

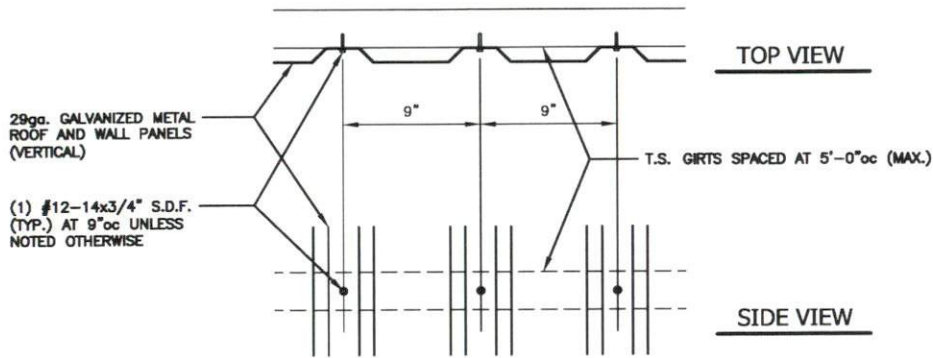


THESE PLANS HAVE BEEN PROPERLY EXAMINED BY THE UNDERSIGNED. I DETERMINED THAT THEY COMPLY WITH EXISTING LOCAL NORTH CAROLINA CODES AND ARE APPROPRIATE FOR USE IN THIS AREA

INDEX OF DRAWINGS

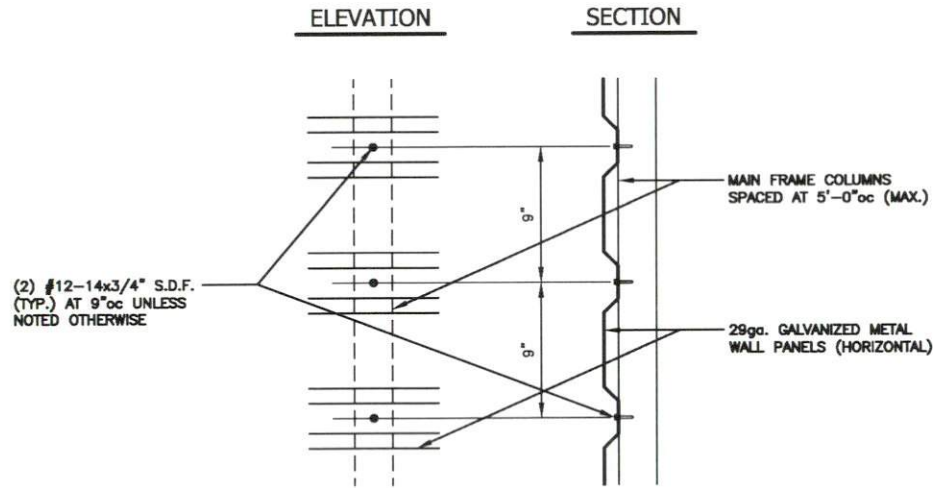
S0	-	COVERSHEET
S0A	-	INDEX OF DRAWINGS
S0B	-	APPENDIX 'B'
S1	-	TYPICAL END / SIDE ELEVATIONS
S2	-	TYPICAL RAFTER / COLUMN FRAME SECTIONS (>31' TO 40' / <20'H.)
S3	-	TYPICAL SIDE FRAMING SECTION
S4	-	BOX EYE / DOUBLE COLUMN OPTIONS (>31' TO 40' / <20' HIGH)
S4A	-	BOX EYE / LACED COLUMN OPTIONS (>31' TO <40' / <20' HIGH)
S5	-	SINGLE COLUMN (LEAN-TO) FOUNDATION
S5A	-	SINGLE COLUMN (LEAN-TO) FOUNDATION -- NO SIDING LEDGE
S5B	-	DOUBLE COLUMN FOUNDATION
S5C	-	DOUBLE COLUMN FOUNDATION -- NO SIDING LEDGE
S5D	-	LACED COLUMN FOUNDATION
S5E	-	LACED COLUMN FOUNDATION -- NO SIDING LEDGE
S6	-	ALTERNATE ANCHORAGE OPTIONS
S7	-	TYPICAL END / SIDE WALL OPENING FRAMING SECTIONS
S8	-	BASE RAIL CONNECTION DETAILS
S8A	-	CONNECTION DETAILS
S8B	-	TRUSS CONNECTION DETAILS
S9	-	LEAN-TO FRAMING OPTIONS
S9A	-	LEAN-TO HIP FRAMING OPTIONS
S10	-	LEAN-TO FRAMING OPTIONS
S10A	-	NOT USED
S10B	-	LEAN-TO FRAMING OPTIONS
S10C	-	LEAN-TO FRAMING OPTIONS
S10D	-	LEAN-TO FRAMING OPTIONS
S11	-	ROOF / HAT CHANNEL ELEVATION
S12	-	HEADER OPTIONS

	
FREDDY CASTRO GUERRA 34 N MCKINILEY ST COATS, NC 27521	
	
PO BOX 27 Pilot Mountain, NC 28641 828-310-7160	
Date: 01/31/26 Revisions: -	(HIGH SEISMIC) - OPEN GABLE END BUILDING MAXIMUM >31' TO <40' WIDE x <20' MAXIMUM EAVE HEIGHT (BOX FRAME) (UP TO) 155 M.P.H. WIND ZONE - 35 SNOW LOAD
Project No. 2426-0091 Sheet No. S0A	



(VERTICAL) SIDING CONNECTION DETAIL

SCALE: 1-1/2" = 1'-0"



(HORIZONTAL) SIDING CONNECTION DETAIL

SCALE: 1-1/2" = 1'-0"

APPENDIX "B"
STRUCTURAL DESIGN

DESIGN LOADS:

IMPORTANCE FACTORS WIND (1w) 1.00
 SNOW (1s) 1.00
 SEISMIC (1e) 1.00

DEAD LOADS ROOF 13 P.S.F.
 ROOF COLLATERAL 0 P.S.F.

LIVE LOADS ROOF 20 P.S.F.

GROUND SNOW LOAD: 15 P.S.F. * DRIFT LOAD HAS NOT BEEN CALCULATED

WIND LOAD: BASIC WIND SPEED 118 M.P.H. ASCE 7-10
 EXPOSURE CATAGORY C

SEISMIC DESIGN CATAGORY A B C D

PROVIDE THE FOLLOWING SEISMIC DESIGN PARAMETERS:

OCCUPANCY CATEGORY II

SPECTRAL RESPONSE ACCELERATION S_a 12.9 %g S_1 6.4 %g

SITE CLASSIFICATION D FIELD TEST PRESUMPTIVE HISTORICAL DATA

BASIC STRUCTURAL SYSTEM (CHECK ONE)

BEARING WALL DUAL W/ SPECTRAL MOMENT FRAME
 BUILDING FRAME DUAL W/ INTERMEDIATE R/C OR SPECIAL STEEL
 MOMENT FRAME INVERTED PENDULUM

ANALYSIS PROCEDURE SIMPLIFIED EQUIVALENT LATERAL FORCE MODAL

LATERAL DESIGN CONTROL? EARTHQUAKE WIND

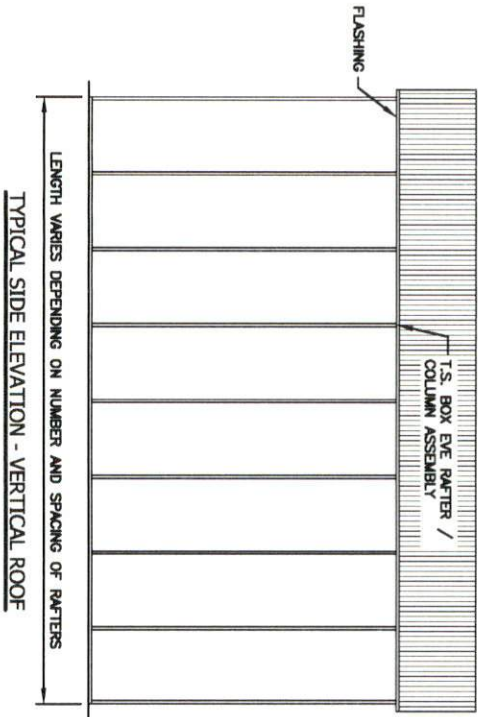
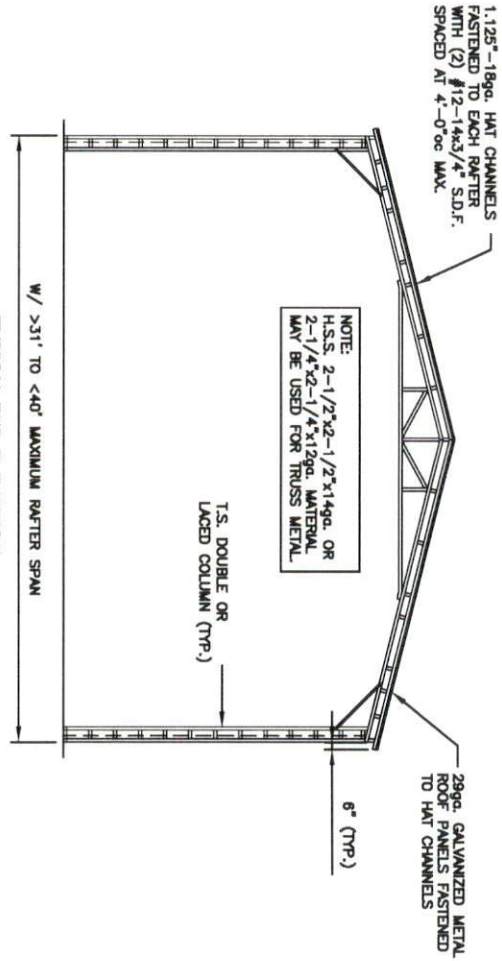
SOIL BEARING CAPACITIES:
PRESUMPTIVE BEARING CAPACITIES: 1,500 P.S.F.

GENERAL NOTES:

1. MAX FRAME SPACING SHALL BE 60"oc UNLESS NOTED OTHERWISE.
2. MAX. END-WALL COLUMN SPACING SHALL BE 60"oc UNLESS NOTED OTHERWISE.
3. TUBE MATERIAL SHALL BE 2-1/2" x 2-1/2" x 14ga. 50 K.S.I. MIN. UNLESS NOTED OTHERWISE.
4. ALL FASTENERS SHALL BE (2) #12 SELF TAPPING AT 9"oc UNLESS NOTED OTHERWISE.
5. 1,500 P.S.F. ASSUMED BEARING CAPACITY UNLESS NOTED OTHERWISE.
6. THESE DRAWINGS ARE NOT APPLICABLE TO OPEN / PARTIALLY OPEN BUILDINGS.
7. THESE DRAWINGS ARE NOT DESIGNED FOR SLEEPING QUARTERS
10. ALL WELDING SHOULD BE PERFORMED IN THE FABRICATION SHOP, NO FIELD WELDING SHOULD BE PERFORMED ON THIS PROJECT.

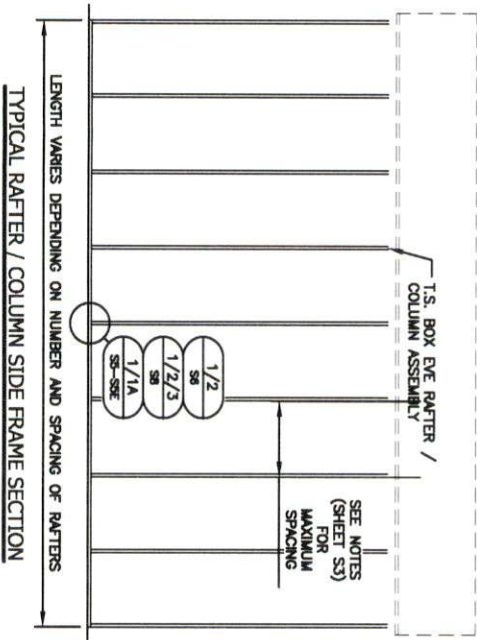
<p>JCMT ASSOCIATES, PLLC PO BOX 27 Pilot Mountain, NC 28641 828-310-7160</p>	<p>Project No. 2426-0091</p>	<p>Sheet No. S0B</p>
	<p>FREDDY CASTRO GUERRA 34 N MCKINLEY ST COATS, NC 27521</p>	
<p>(HIGH SEISMIC) - OPEN GABLE END BUILDING MAXIMUM >31' TO <40' WIDE x <20' MAXIMUM EAVE HEIGHT (BOX FRAME) (UP TO) 155 M.P.H. WIND ZONE - 35 SNOW LOAD</p>		
<p>Date: 01/31/26</p>		<p>Revisions:</p>
<p>SEAL 27874 ENGINEER JASON M. REEP 01/31/2026</p>		

BOX EYE FRAME RAFTER STRUCTURE



	<p>FREDDY CASTRO GUERRA 34 N MCKINLEY ST COATS, NC 27521</p>		<p>JCMT ASSOCIATES, PLLC PO BOX 27 Pilot Mountain, NC 28641 828-310-7160</p>		Project No. 2426-0091
	Date: 01/31/26	<p>(HIGH SEISMIC) - OPEN GABLE END BUILDING MAXIMUM >31' TO <40' WIDE x <20' MAXIMUM EAVE HEIGHT (BOX FRAME) (UP TO) 155 M.P.H. WIND ZONE - 35 SNOW LOAD</p>			Sheet No. S1
Revisions: -	VI.1				

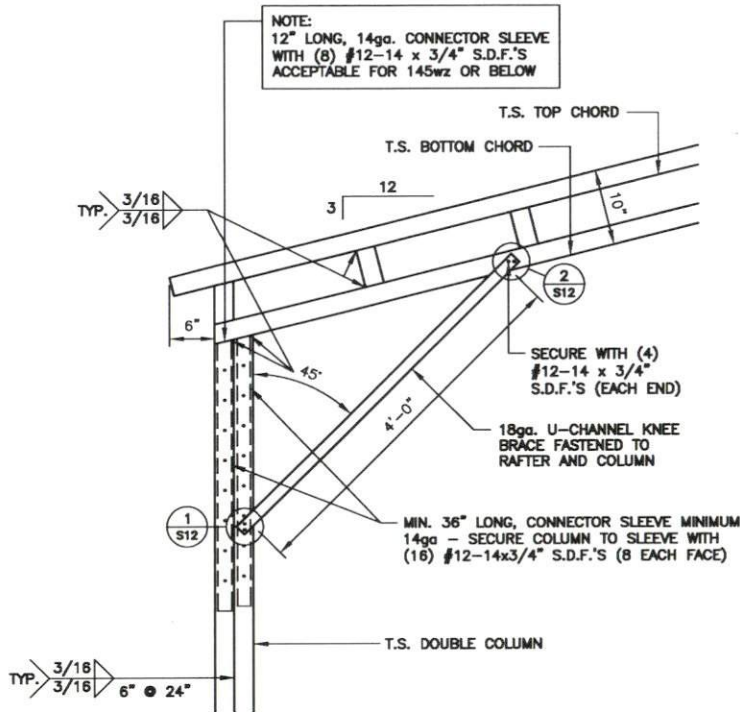
TYPICAL SIDE FRAMING ELEVATION



NOTE:
 H.S.S. 2-1/2"x2-1/2"x14ga. OR 2-1/4"x2-1/4"x12ga.
 MATERIAL MAY BE USED FOR TRUSS METAL.

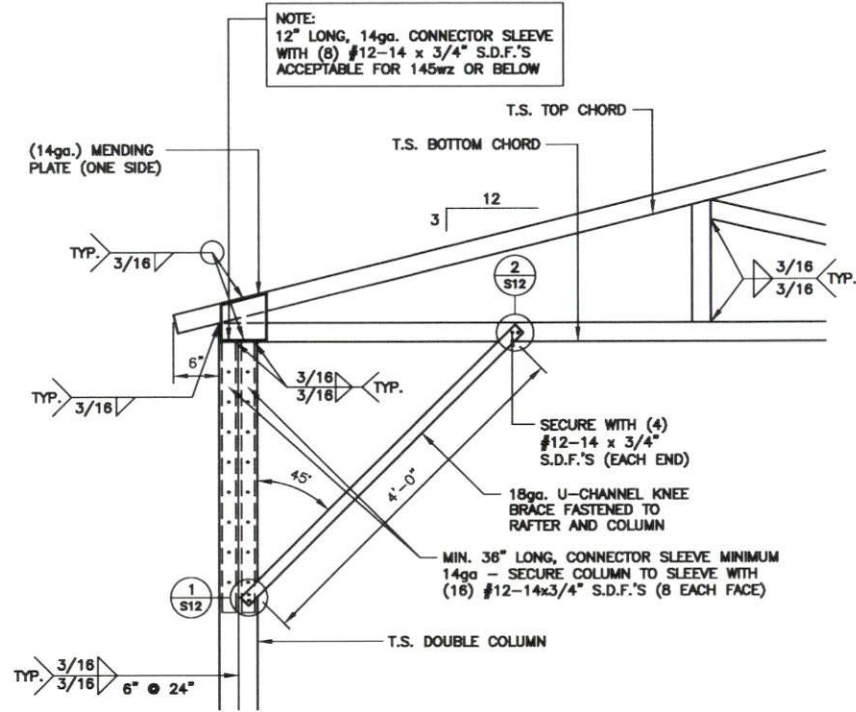
	<p>FREDDY CASTRO GUERRA 34 N MCKINLEY ST COATS, NC 27521</p>		<p>JCMT ASSOCIATES, PLLC PO BOX 27 Pilot Mountain, NC 28641 828-310-7160</p>		<p>Project No. 2426-0091</p>
	<p>Date: 01/31/26</p>	<p>(HIGH SEISMIC) - OPEN GABLE END BUILDING MAXIMUM >31' TO <40' WIDE x <20' MAXIMUM EAVE HEIGHT (BOX FRAME) (UP TO) 155 M.P.H. WIND ZONE - 35 SNOW LOAD</p>			<p>Sheet No. S3</p>

DOUBLE COLUMN OPTIONS



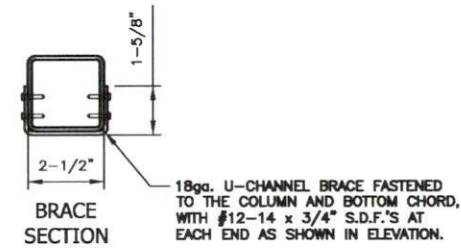
1
S4
 BOX EAVE / CORNER POST CONNECTION DETAIL
 FOR HEIGHTS $< 10'-0''$

SCALE: $3/4" = 1'-0''$



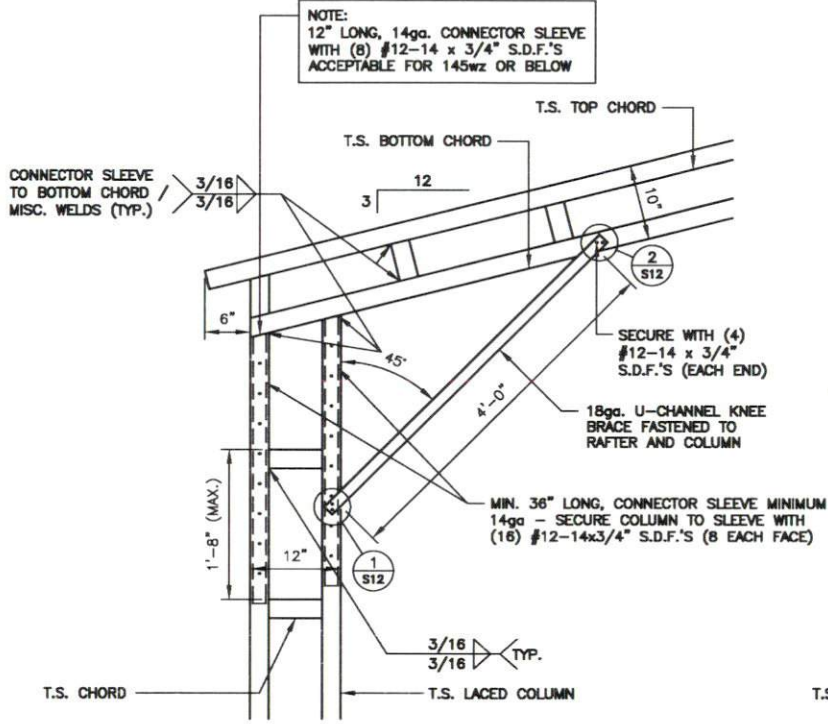
1A
S4
 BOX EAVE / CORNER POST CONNECTION DETAIL
 FOR HEIGHTS $< 14'-0''$ (FLAT BOTTOM CHORD OPTION)

SCALE: $3/4" = 1'-0''$

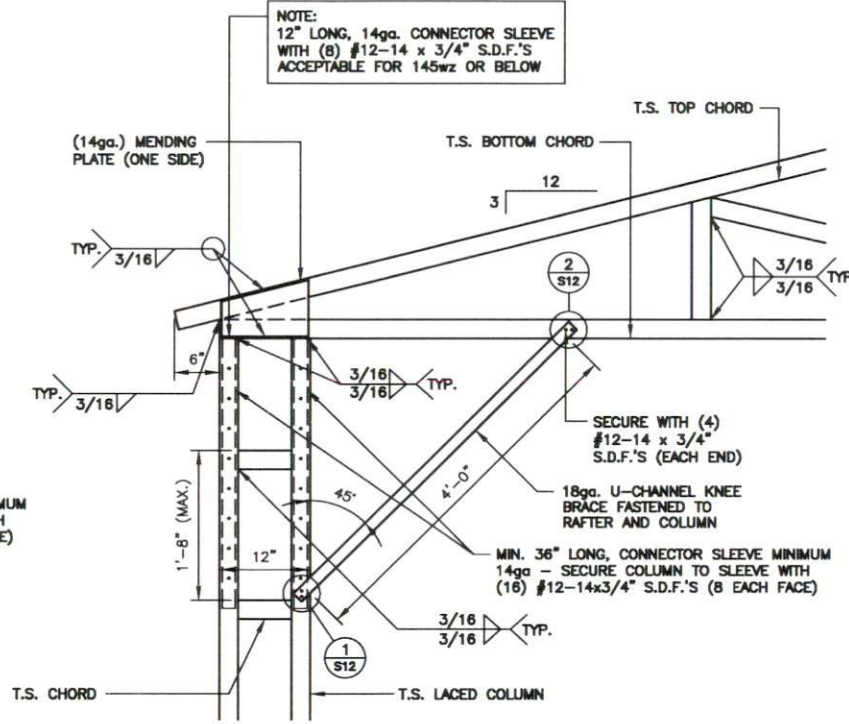


JCMT ASSOCIATES, PLLC PO BOX 27 Pilot Mountain, NC 28641 828-310-7160	Project No. 2426-0091	Sheet No. S4
	(HIGH SEISMIC) - OPEN GABLE END BUILDING MAXIMUM $> 31'$ TO $< 40'$ WIDE x $< 20'$ MAXIMUM EAVE HEIGHT (BOX FRAME) (UP TO) 155 M.P.H. WIND ZONE - 35 SNOW LOAD	
FREDDY CASTRO GUERRA 34 N MCKINLEY ST COATS, NC 27521	Date: 01/31/26	Revisions:

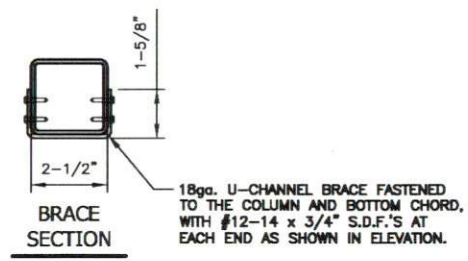
LACED COLUMN OPTIONS



1
S4A BOX EAVE / CORNER POST CONNECTION DETAIL FOR HEIGHTS <20'-0" SCALE: 3/4" = 1'-0"

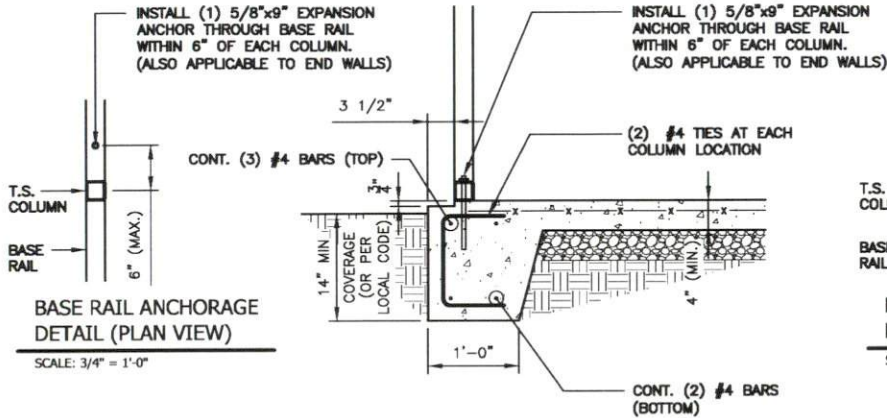


1A
S4A BOX EAVE / CORNER POST CONNECTION DETAIL FOR HEIGHTS <20'-0" (FLAT BOTTOM CHORD OPTION) SCALE: 3/4" = 1'-0"

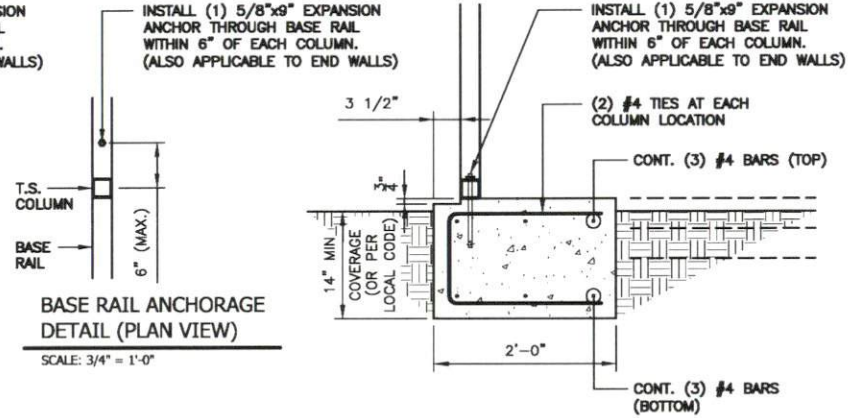


<p>JCMT ASSOCIATES, PLLC PO BOX 27 Pilot Mountain, NC 28641 828-310-7160</p>	Project No. 2426-0091	Sheet No. S4A
	<p>FREDDY CASTRO GUERRA 34 N MCKINLEY ST COATS, NC 27521</p>	
<p>(HIGH SEISMIC) - OPEN GABLE END BUILDING MAXIMUM >31' TO <40' WIDE x <20' MAXIMUM EAVE HEIGHT (BOX FRAME) (UP TO) 155 M.P.H. WIND ZONE - 35 SNOW LOAD</p>		
Date: 01/31/26	Revisions:	
<p>NORTH CAROLINA PROFESSIONAL SEAL 27874 ENGINEER JASON M. REEP 01/31/2026</p>		

(HIGH SEISMIC) SINGLE COLUMN OPTIONS (LEAN-TO'S ONLY)



1 BASE RAIL ANCHORAGE DETAIL
S5 SCALE: 3/4" = 1'-0"



1A BASE RAIL ANCHORAGE DETAIL (NO SLAB)
S5 SCALE: 3/4" = 1'-0"

GENERAL NOTES:

ALL CONCRETE MONOLITHIC SLAB DESIGN BASED ON MINIMUM SOIL BEARING CAPACITY OF 1,500 P.S.F.

CONCRETE:
CONCRETE SHALL HAVE A MINIMUM SPECIFIED COMPRESSIVE STRENGTH OF 3,000 P.S.I. AT 28 DAYS.

COVER OVER REINFORCING STEEL:
FOR FOUNDATIONS, MINIMUM CONCRETE COVER OVER REINFORCING BARS SHALL BE PER ACI-318: 3" IN FOUNDATIONS WHERE THE CONCRETE IS CAST AGAINST AND PERMANENTLY IN CONTACT WITH THE EARTH OR EXPOSED TO THE EARTH AND WEATHER AND 1-1/2" ELSEWHERE.

REINFORCING STEEL:

THE TURNDOWN REINFORCING STEEL SHALL BE ASTM A615 GRADE 60. THE SLAB REINFORCEMENT SHALL BE WELDED WIRE FABRIC MEETING ASTM A185 OR FIBERGLASS FIBER REINFORCEMENT.

REINFORCEMENT MAY BE BENT IN THE SHOP OR IN THE FIELD PROVIDED:

1. REINFORCEMENT IS BENT COLD.
2. THE DIAMETER OF THE BEND, MEASURED ON THE INSIDE OF THE BAR, IS NOT LESS THAN SIX-BAR DIAMETERS.
3. REINFORCEMENT PARTIALLY EMBEDDED IN CONCRETE SHALL NOT BE FIELD BENT.

JCMT
ASSOCIATES, PLLC
PO BOX 27
Pilot Mountain, NC 28641
828-310-7160

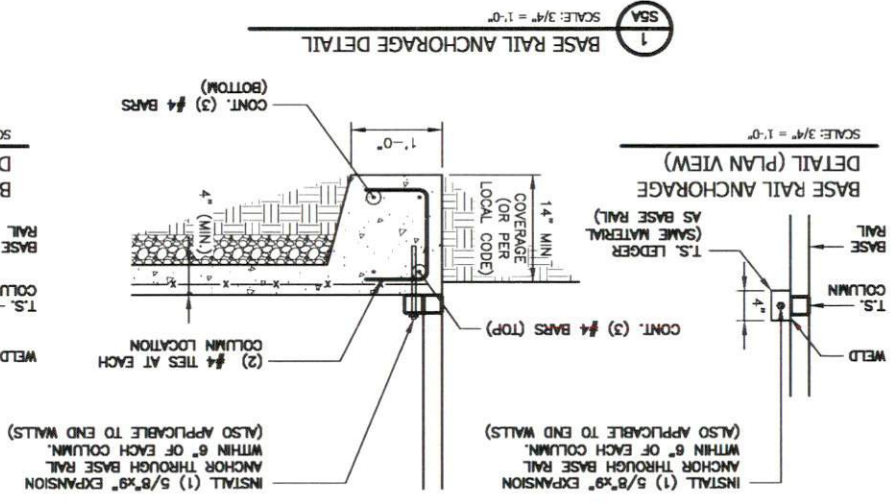
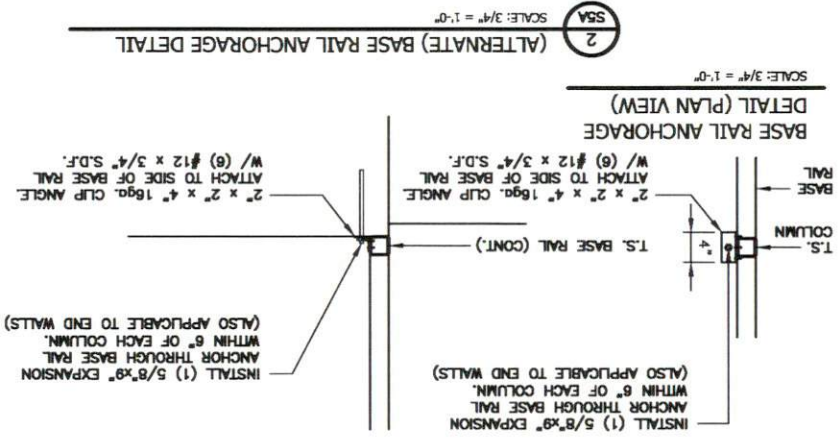
FREDDY CASTRO GUERRA
34 N MCKINLEY ST
COATS, NC 27521

Project No.
2426-0091
Sheet No.
S5

(HIGH SEISMIC) - OPEN GABLE END BUILDING
MAXIMUM >31' TO <40' WIDE x <20' MAXIMUM EAVE HEIGHT (BOX FRAME)
(UP TO) 155 M.P.H. WIND ZONE - 35 SNOW LOAD

Date:
01/31/26
Revisions:





GENERAL NOTES:

ALL CONCRETE MONOLITHIC SLAB DESIGN BASED ON MINIMUM SOIL BEARING CAPACITY OF 1,500 P.S.F.

CONCRETE SHALL HAVE A MINIMUM SPECIFIED COMPRESSIVE STRENGTH OF 3,000 P.S.I. AT 28 DAYS.

COVER OVER REINFORCING STEEL:

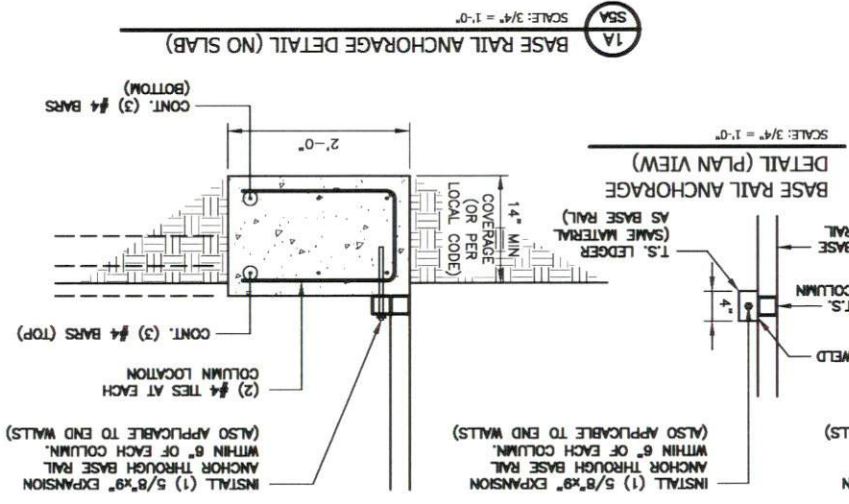
FOR FOUNDATIONS, MINIMUM CONCRETE COVER OVER REINFORCING BARS SHALL BE PER ACI-318. 3" IN FOUNDATIONS WHERE THE CONCRETE IS CAST AGAINST AND PERMANENTLY IN CONTACT WITH THE EARTH OR EXPOSED TO THE EARTH AND WEATHER AND 1-1/2" ELSEWHERE.

REINFORCING STEEL:

1. REINFORCEMENT IS BENT COLD.

2. THE DIAMETER OF THE BEND, MEASURED ON THE INSIDE OF THE BAR, IS NOT LESS THAN SIX-BAR DIAMETERS.

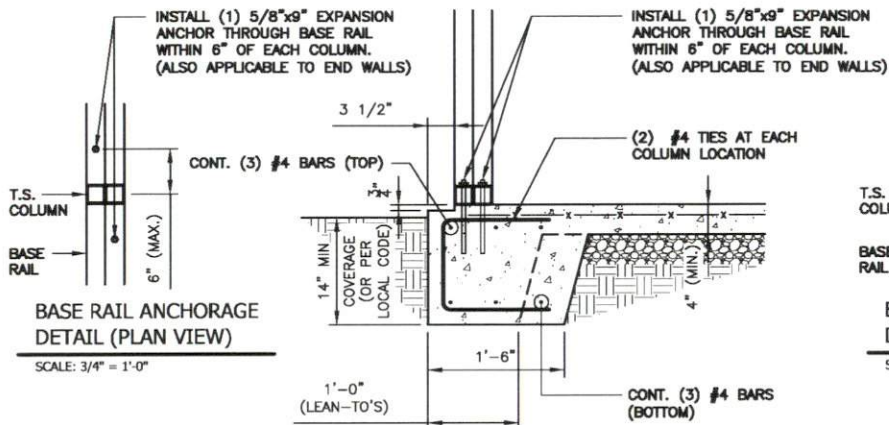
3. REINFORCEMENT PARTIALLY EMBEDDED IN CONCRETE SHALL NOT BE FIELD BENT.



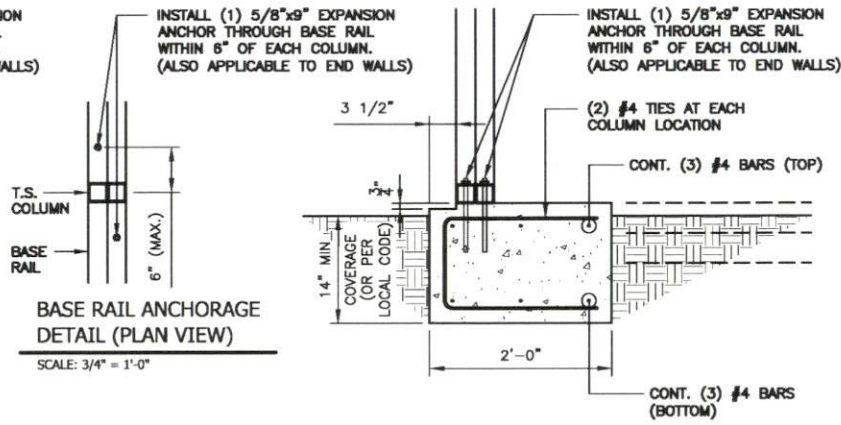
(HIGH SEISMIC) SINGLE COLUMN OPTIONS - NO SIDING LEDGE

	Date:	01/31/26	<p>FREDDY CASTRO GUERRA 34 N MCKINLEY ST COATS, NC 27521</p>	<p>JCMT ASSOCIATES, PLLC PO BOX 27 Pilot Mountain, NC 28641 828-310-7160</p>	Project No. 2426-0091 Sheet No. SSA
	Revisions:				
W1					

(HIGH SEISMIC) DOUBLE COLUMN OPTIONS



1 BASE RAIL ANCHORAGE DETAIL
SCALE: 3/4" = 1'-0"



1A BASE RAIL ANCHORAGE DETAIL (NO SLAB)
SCALE: 3/4" = 1'-0"

GENERAL NOTES:

ALL CONCRETE MONOLITHIC SLAB DESIGN BASED ON MINIMUM SOIL BEARING CAPACITY OF 1,500 P.S.F.

CONCRETE:
CONCRETE SHALL HAVE A MINIMUM SPECIFIED COMPRESSIVE STRENGTH OF 3,000 P.S.I. AT 28 DAYS.

COVER OVER REINFORCING STEEL:
FOR FOUNDATIONS, MINIMUM CONCRETE COVER OVER REINFORCING BARS SHALL BE PER ACI-318: 3" IN FOUNDATIONS WHERE THE CONCRETE IS CAST AGAINST AND PERMANENTLY IN CONTACT WITH THE EARTH OR EXPOSED TO THE EARTH AND WEATHER AND 1-1/2" ELSEWHERE.

REINFORCING STEEL:

THE TURNDOWN REINFORCING STEEL SHALL BE ASTM A615 GRADE 60. THE SLAB REINFORCEMENT SHALL BE WELDED WIRE FABRIC MEETING ASTM A185 OR FIBERGLASS FIBER REINFORCEMENT.

REINFORCEMENT MAY BE BENT IN THE SHOP OR IN THE FIELD PROVIDED:

1. REINFORCEMENT IS BENT COLD.
2. THE DIAMETER OF THE BEND, MEASURED ON THE INSIDE OF THE BAR, IS NOT LESS THAN SIX-BAR DIAMETERS.
3. REINFORCEMENT PARTIALLY EMBEDDED IN CONCRETE SHALL NOT BE FIELD BENT.

JCMT
ASSOCIATES, PLLC
PO BOX 27
Pilot Mountain, NC 28641
828-310-7160

FREDDY CASTRO GUERRA
34 N MCKINLEY ST
COATS, NC 27521

Project No.
2426-0091

Sheet No.
SSB

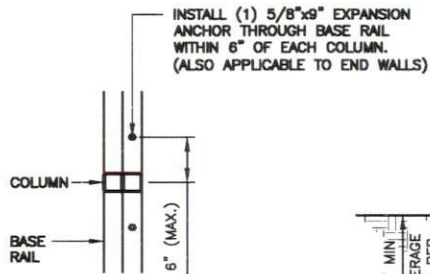
(HIGH SEISMIC) - OPEN GABLE END BUILDING
MAXIMUM >31' TO <40' WIDE x <20' MAXIMUM EAVE HEIGHT (BOX FRAME)
(UP TO) 155 M.P.H. WIND ZONE - 35 SNOW LOAD

Date:
01/31/26

Revisions:

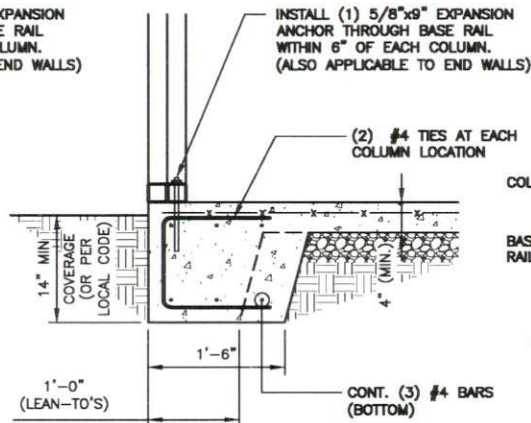


(HIGH SEISMIC) DOUBLE COLUMN OPTIONS - NO SIDING LEDGE



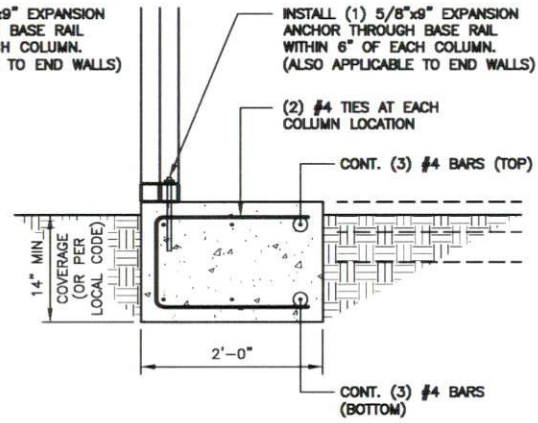
BASE RAIL ANCHORAGE
DETAIL (PLAN VIEW)

SCALE: 3/4" = 1'-0"



BASE RAIL ANCHORAGE
DETAIL (PLAN VIEW)

SCALE: 3/4" = 1'-0"



BASE RAIL ANCHORAGE DETAIL (NO SLAB)

SCALE: 3/4" = 1'-0"

1
SSC BASE RAIL ANCHORAGE DETAIL
SCALE: 3/4" = 1'-0"

1A
SSC BASE RAIL ANCHORAGE DETAIL (NO SLAB)
SCALE: 3/4" = 1'-0"

GENERAL NOTES:

ALL CONCRETE MONOLITHIC SLAB DESIGN BASED ON MINIMUM SOIL BEARING CAPACITY OF 1,500 P.S.F.

CONCRETE:
CONCRETE SHALL HAVE A MINIMUM SPECIFIED COMPRESSIVE STRENGTH OF 3,000 P.S.I. AT 28 DAYS.

COVER OVER REINFORCING STEEL:
FOR FOUNDATIONS, MINIMUM CONCRETE COVER OVER REINFORCING BARS SHALL BE PER ACI-318:
3" IN FOUNDATIONS WHERE THE CONCRETE IS CAST AGAINST AND PERMANENTLY IN CONTACT WITH THE EARTH OR EXPOSED TO THE EARTH AND WEATHER AND 1-1/2" ELSEWHERE.

REINFORCING STEEL:

THE TURNDOWN REINFORCING STEEL SHALL BE ASTM A615 GRADE 60. THE SLAB REINFORCEMENT SHALL BE WELDED WIRE FABRIC MEETING ASTM A185 OR FIBERGLASS FIBER REINFORCEMENT.

REINFORCEMENT MAY BE BENT IN THE SHOP OR IN THE FIELD PROVIDED:

1. REINFORCEMENT IS BENT COLD.
2. THE DIAMETER OF THE BEND, MEASURED ON THE INSIDE OF THE BAR, IS NOT LESS THAN SIX-BAR DIAMETERS.
3. REINFORCEMENT PARTIALLY EMBEDDED IN CONCRETE SHALL NOT BE FIELD BENT.

JCMT
ASSOCIATES, PLLC
PO BOX 27
Pilot Mountain, NC 28641
828-310-7160

FREDDY CASTRO GUERRA
34 N MCKINLEY ST
COATS, NC 27521

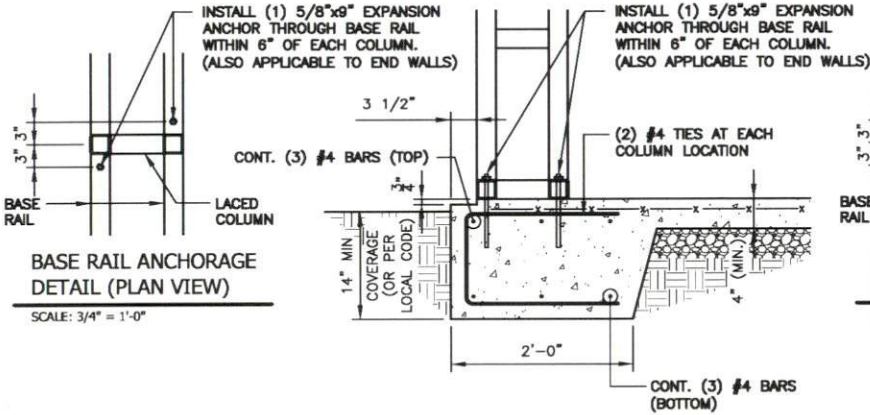
NORTH CAROLINA
PROFESSIONAL
SEAL
27874
ENGINEER
JASON M. REEP
01/31/2026

Project No.
2426-0091
Sheet No.
S5C

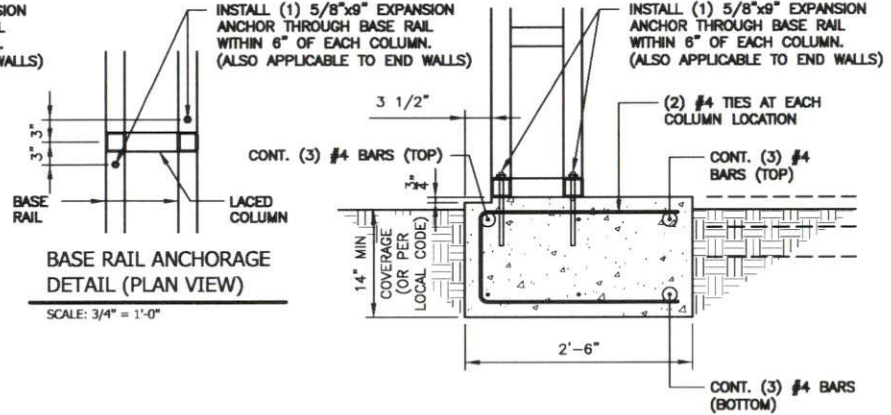
(HIGH SEISMIC) - OPEN GABLE END BUILDING
MAXIMUM >31' TO <40' WIDE x <20' MAXIMUM EAVE HEIGHT (BOX FRAME)
(UP TO) 155 M.P.H. WIND ZONE - 35 SNOW LOAD

Date:
01/31/26
Revisions:

(HIGH SEISMIC) LACED COLUMN OPTIONS



1
SSD
BASE RAIL ANCHORAGE DETAIL
SCALE: 3/4" = 1'-0"



1A
SSD
BASE RAIL ANCHORAGE DETAIL (NO SLAB)
SCALE: 3/4" = 1'-0"

GENERAL NOTES:

ALL CONCRETE MONOLITHIC SLAB DESIGN BASED ON MINIMUM SOIL BEARING CAPACITY OF 1,500 P.S.F.

CONCRETE:
CONCRETE SHALL HAVE A MINIMUM SPECIFIED COMPRESSIVE STRENGTH OF 3,000 P.S.I. AT 28 DAYS.

COVER OVER REINFORCING STEEL:
FOR FOUNDATIONS, MINIMUM CONCRETE COVER OVER REINFORCING BARS SHALL BE PER ACI-318: 3" IN FOUNDATIONS WHERE THE CONCRETE IS CAST AGAINST AND PERMANENTLY IN CONTACT WITH THE EARTH OR EXPOSED TO THE EARTH AND WEATHER AND 1-1/2" ELSEWHERE.

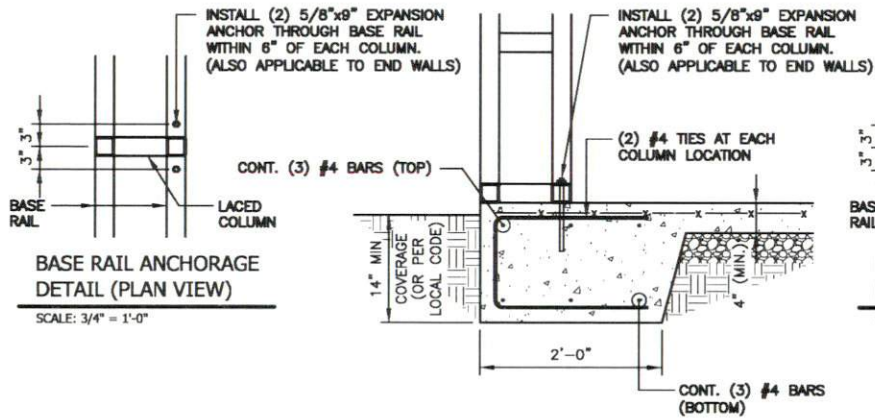
REINFORCING STEEL:
THE TURNDOWN REINFORCING STEEL SHALL BE ASTM A615 GRADE 60. THE SLAB REINFORCEMENT SHALL BE WELDED WIRE FABRIC MEETING ASTM A185 OR FIBERGLASS FIBER REINFORCEMENT.

REINFORCEMENT MAY BE BENT IN THE SHOP OR IN THE FIELD PROVIDED:

1. REINFORCEMENT IS BENT COLD.
2. THE DIAMETER OF THE BEND, MEASURED ON THE INSIDE OF THE BAR, IS NOT LESS THAN SIX-BAR DIAMETERS.
3. REINFORCEMENT PARTIALLY EMBEDDED IN CONCRETE SHALL NOT BE FIELD BENT.

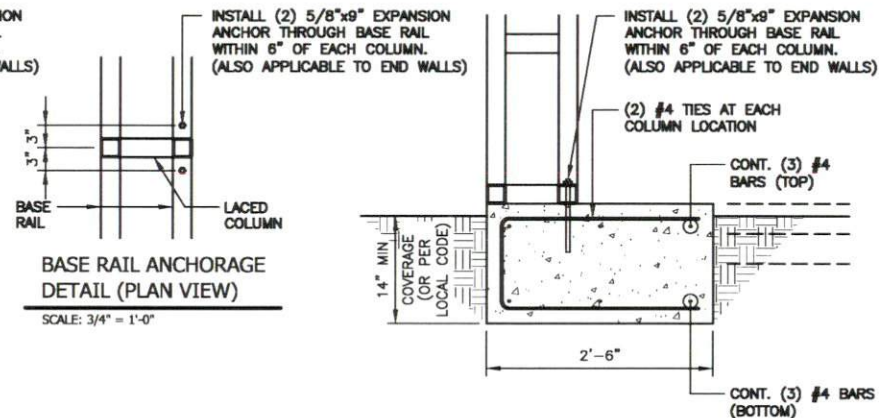
JCMT ASSOCIATES, PLLC PO BOX 27 Pilot Mountain, NC 28641 828-310-7160	Project No. 2426-0091
	Sheet No. S5D
FREDDY CASTRO GUERRA 34 N MCKINLEY ST COATS, NC 27521	(HIGH SEISMIC) - OPEN GABLE END BUILDING MAXIMUM >31' TO <40' WIDE x <20' MAXIMUM EAVE HEIGHT (BOX FRAME) (UP TO) 155 M.P.H. WIND ZONE - 35 SNOW LOAD
	Date: 01/31/26 Revisions:
	W.1

(HIGH SEISMIC) LACED COLUMN OPTIONS (NO SIDING LEDGE)



**BASE RAIL ANCHORAGE
DETAIL (PLAN VIEW)**
SCALE: 3/4" = 1'-0"

1
SSE **BASE RAIL ANCHORAGE DETAIL**
SCALE: 3/4" = 1'-0"



**BASE RAIL ANCHORAGE
DETAIL (PLAN VIEW)**
SCALE: 3/4" = 1'-0"

1A
SSE **BASE RAIL ANCHORAGE DETAIL (NO SLAB)**
SCALE: 3/4" = 1'-0"

GENERAL NOTES:

ALL CONCRETE MONOLITHIC SLAB DESIGN BASED ON MINIMUM SOIL BEARING CAPACITY OF 1,500 P.S.F.

CONCRETE:
CONCRETE SHALL HAVE A MINIMUM SPECIFIED COMPRESSIVE STRENGTH OF 3,000 P.S.I. AT 28 DAYS.

COVER OVER REINFORCING STEEL:
FOR FOUNDATIONS, MINIMUM CONCRETE COVER OVER REINFORCING BARS SHALL BE PER ACI-318:
3" IN FOUNDATIONS WHERE THE CONCRETE IS CAST AGAINST AND PERMANENTLY IN CONTACT WITH THE EARTH OR EXPOSED TO THE EARTH AND WEATHER AND 1-1/2" ELSEWHERE.

REINFORCING STEEL:

THE TURNDOWN REINFORCING STEEL SHALL BE ASTM A615 GRADE 60. THE SLAB REINFORCEMENT SHALL BE WELDED WIRE FABRIC MEETING ASTM A185 OR FIBERGLASS FIBER REINFORCEMENT.

REINFORCEMENT MAY BE BENT IN THE SHOP OR IN THE FIELD PROVIDED:

1. REINFORCEMENT IS BENT COLD.
2. THE DIAMETER OF THE BEND, MEASURED ON THE INSIDE OF THE BAR, IS NOT LESS THAN SIX-BAR DIAMETERS.
3. REINFORCEMENT PARTIALLY EMBEDDED IN CONCRETE SHALL NOT BE FIELD BENT.

JCMT
ASSOCIATES, PLLC
PO BOX 27
Pilot Mountain, NC 28641
828-310-7160

FREDDY CASTRO GUERRA
34 N MCKINLEY ST
COATS, NC 27521

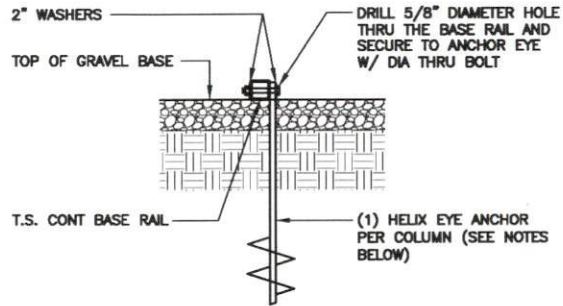
Project No.
2426-0091
Sheet No.
S5E

(HIGH SEISMIC) - OPEN GABLE END BUILDING
MAXIMUM >31' TO <40' WIDE x <20' MAXIMUM EAVE HEIGHT (BOX FRAME)
(UP TO) 155 M.P.H. WIND ZONE - 35 SNOW LOAD

Date:
01/31/26
Revisions:



ALTERNATE ANCHORAGE OPTIONS



1 BASE RAIL ANCHORAGE DETAIL
SCALE: 3/4" = 1'-0"

HELIX EMBEDMENT INFORMATION:

FOR VERY DENSE OR CEMENTED SANDS, COARSE GRAVEL, COBBLES, CALICHE, PRELOADED SILTS AND CLAYS, USE MIN. (2) 4" HELICES WITH MINIMUM 30" EMBEDMENT OR SINGLE 6" HELIX WITH 50" EMBEDMENT - ONE EACH END BASE RAIL AND 25'-0"oc MAX. WITH #4 REBAR AT 5'-0"oc BETWEEN.

FOR CORAL, USE MIN (2) 4" HELICES WITH MINIMUM 30" EMBEDMENT OR SINGLE 6" HELIX WITH 50" EMBEDMENT - ONE EACH END BASE RAIL AND 25'-0"oc MAX. WITH #4 REBAR AT 5'-0"oc BETWEEN.

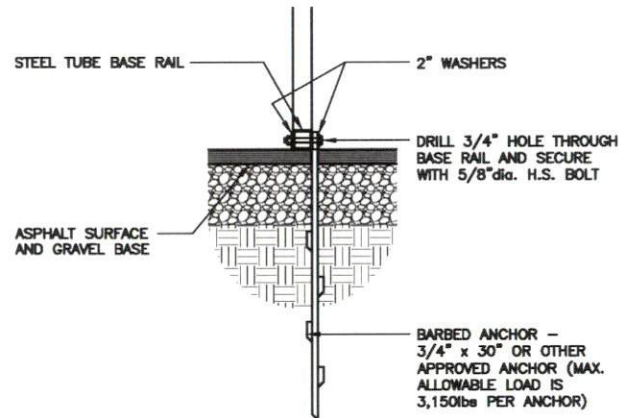
FOR MED DENSE COARSE SANDS, SANDY GRAVEL, VERY STIFF SILTS, AND CLAYS, USE MIN (2) 4" HELICES WITH MINIMUM 30" EMBEDMENT OR SINGLE 6" HELIX WITH 50" EMBEDMENT - ONE EACH END BASE RAIL AND 25'-0"oc MAX. WITH #4 REBAR AT 5'-0"oc BETWEEN.

FOR LOOSE TO MEDIUM DENSE SANDS, FIRM TO STIFF CLAYS AND SILTS, USE MIN (2) 6" HELICES WITH MINIMUM 50" EMBEDMENT - ONE EACH END BASE RAIL AND 25'-0"oc MAX. WITH #4 REBAR AT 5'-0"oc BETWEEN.

FOR VERY LOOSE TO MEDIUM DENSE SANDS, FIRM TO STIFFER CLAYS AND SILTS AND ALLUVIAL FILL, USE MIN (2) 8" HELICES WITH MINIMUM 60" EMBEDMENT - ONE EACH END BASE RAIL AND 25'-0"oc MAX. WITH #4 REBAR AT 5'-0"oc BETWEEN.

NOTE:

IN ALL CASES, IF FROST DEPTH EXCEEDS STATED DEPTH, ANCHOR SHOULD EXTEND A MIN. OF 12" BELOW FROST LINE.



2 ASPHALT / BASE RAIL ANCHORAGE DETAIL
SCALE: 3/4" = 1'-0"

BARBED ANCHOR EMBEDMENT INFORMATION:

(1) ASPHALT ANCHOR WITHIN 6" OF EACH COLUMN.

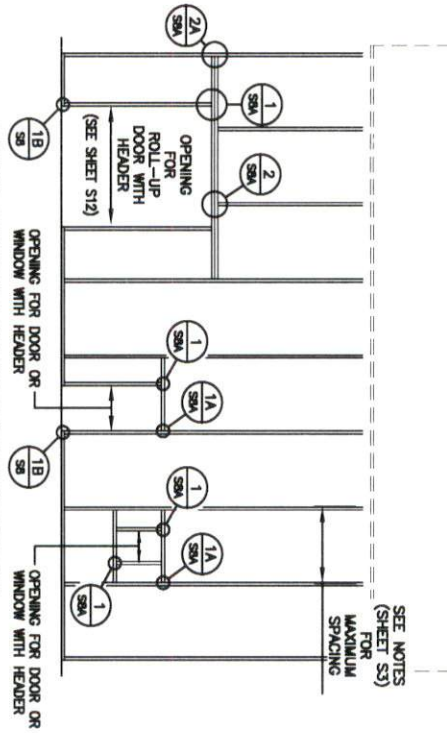
NOTE:

IN ALL CASES, IF FROST DEPTH EXCEEDS STATED DEPTH, ANCHOR SHOULD EXTEND A MIN. OF 12" BELOW FROST LINE.

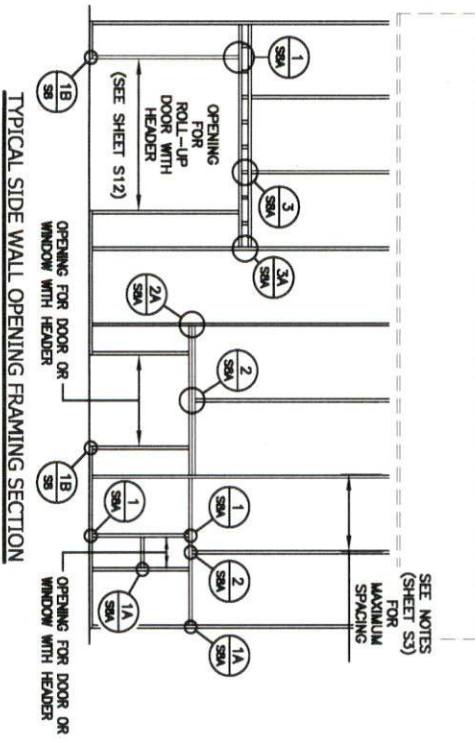
<p>JCMT ASSOCIATES, PLLC PO BOX 27 Pilot Mountain, NC 28641 828-310-7160</p>	Project No. 2426-0091
	Sheet No. S6
<p>FREDDY CASTRO GUERRA 34 N MCKINLEY ST COATS, NC 27521</p>	(HIGH SEISMIC) - OPEN GABLE END BUILDING MAXIMUM >31' TO <40' WIDE x <20' MAXIMUM EAVE HEIGHT (BOX FRAME) (UP TO) 155 M.P.H. WIND ZONE - 35 SNOW LOAD
Date: 01/31/26	Revisions:
	V.1

TYPICAL SIDE / END WALL OPENING FRAMING SECTIONS

NOTE:
ROLL UP DOORS SHALL HAVE ONE JAMB
EACH SIDE + ONE FRAME COLUMN BETWEEN
OR SITE SPECIFIC SHALL BE REQ'D.



NOTE:
ROLL UP DOORS SHALL HAVE ONE JAMB
EACH SIDE + ONE FRAME COLUMN BETWEEN
OR SITE SPECIFIC SHALL BE REQ'D.



SEAL
FREDDY CASTRO GUERRA
REGISTERED PROFESSIONAL ENGINEER
NO. 57874
NORTH CAROLINA
01/31/2026
C. MASON, M. REEP

FREDDY CASTRO GUERRA
34 N MCKINLEY ST
COATS, NC 27521

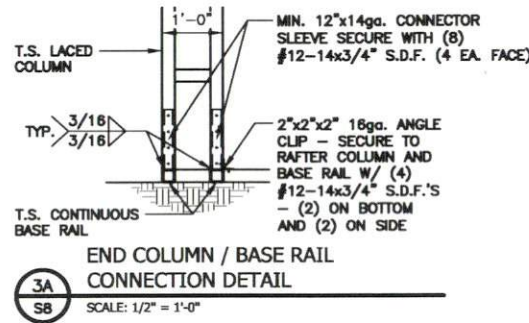
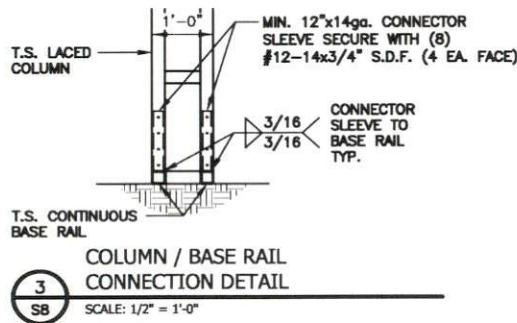
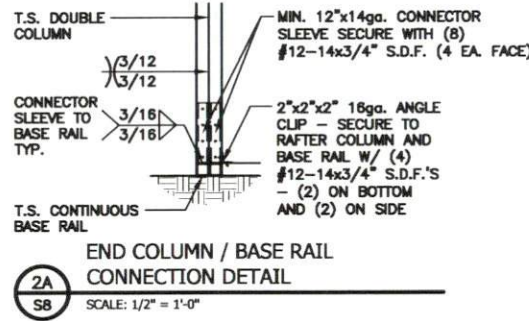
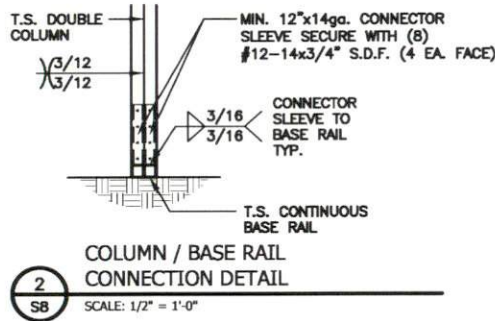
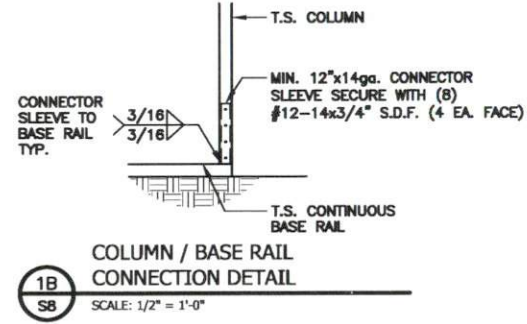
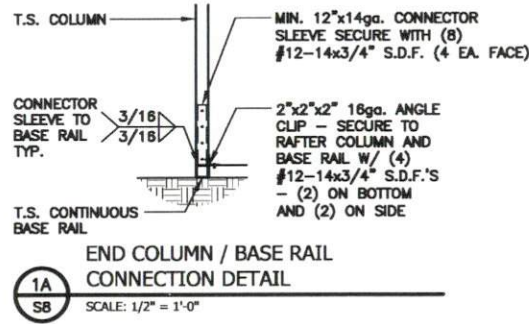
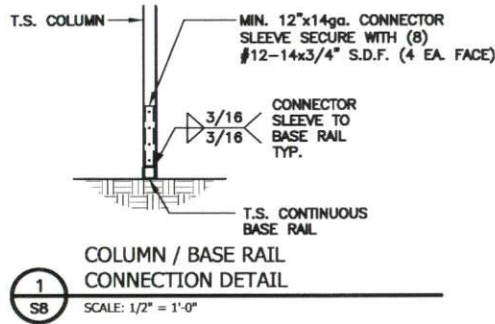
JCMT
ASSOCIATES, PLLC
PO BOX 27
Pilot Mountain, NC 28641
828-310-7160

Date:
01/31/26
Revisions:

(HIGH SEISMIC) - OPEN GABLE END BUILDING
MAXIMUM >31' TO <40' WIDE x <20' MAXIMUM EAVE HEIGHT (BOX FRAME)
(UP TO) 155 M.P.H. WIND ZONE - 35 SNOW LOAD

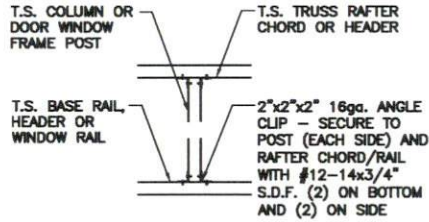
Project No.
2426-0091
Sheet No.
S7

BASE RAIL CONNECTION DETAILS



<p>JCMT ASSOCIATES, PLLC PO BOX 27 Pilot Mountain, NC 28641 828-310-7160</p>	<p>Project No. 2428-0091</p>
	<p>Sheet No. S8</p>
<p>FREDDY CASTRO GUERRA 34 N MCKINLEY ST COATS, NC 27521</p>	<p>(HIGH SEISMIC) - OPEN GABLE END BUILDING MAXIMUM >31' TO <40' WIDE x <20' MAXIMUM EAVE HEIGHT (BOX FRAME) (UP TO) 155 M.P.H. WIND ZONE - 35 SNOW LOAD</p>
<p>Date: 01/31/26</p>	<p>Revisions:</p>
	<p>W.1</p>

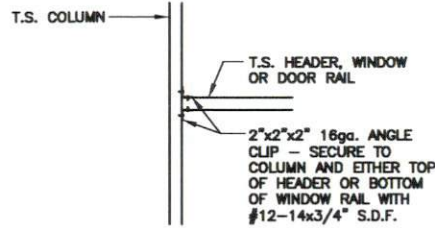
CONNECTION DETAILS



POST TO TRUSS / HEADER
CONNECTION DETAIL

1
SBA

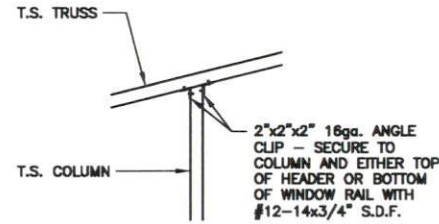
SCALE: 1/2" = 1'-0"



HEADER RAIL TO POST
CONNECTION DETAIL

1A
SBA

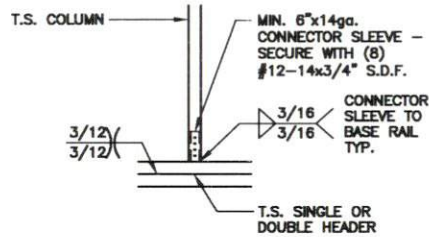
SCALE: 1/2" = 1'-0"



POST TO TRUSS
CONNECTION DETAIL

1B
SBA

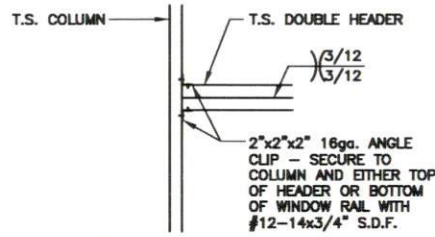
SCALE: 1/2" = 1'-0"



POST TO DOUBLE HEADER
CONNECTION DETAIL

2
SBA

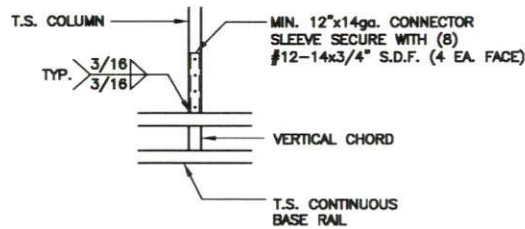
SCALE: 1/2" = 1'-0"



DOUBLE HEADER TO POST
CONNECTION DETAIL

2A
SBA

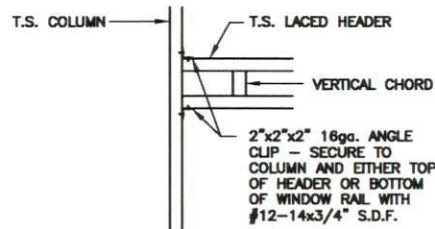
SCALE: 1/2" = 1'-0"



POST TO LACED HEADER
CONNECTION DETAIL

3
SBA

SCALE: 1/2" = 1'-0"



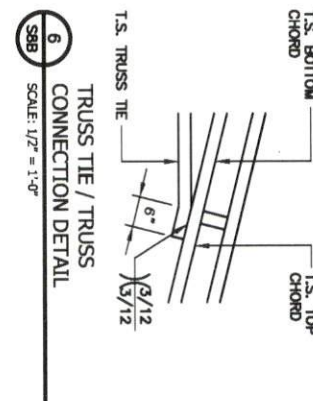
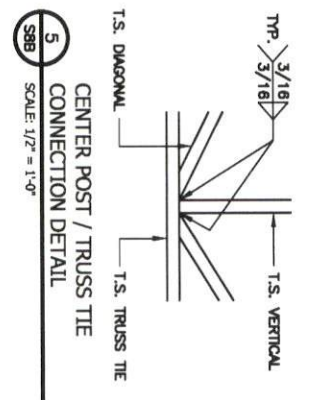
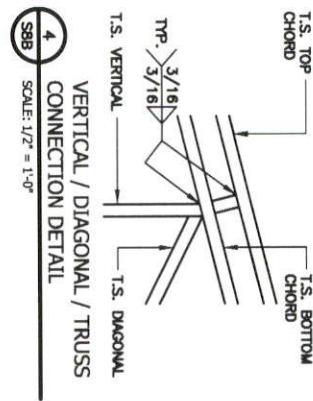
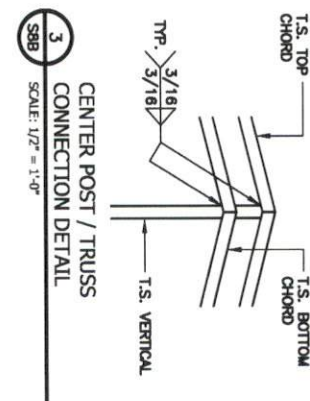
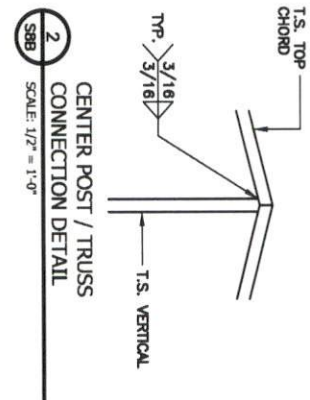
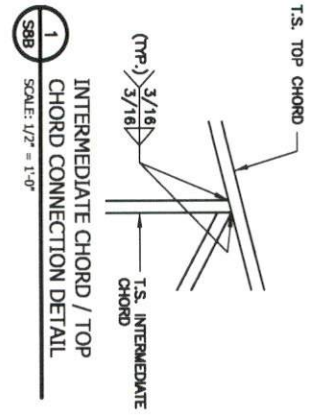
LACED HEADER TO POST
CONNECTION DETAIL

3A
SBA

SCALE: 1/2" = 1'-0"

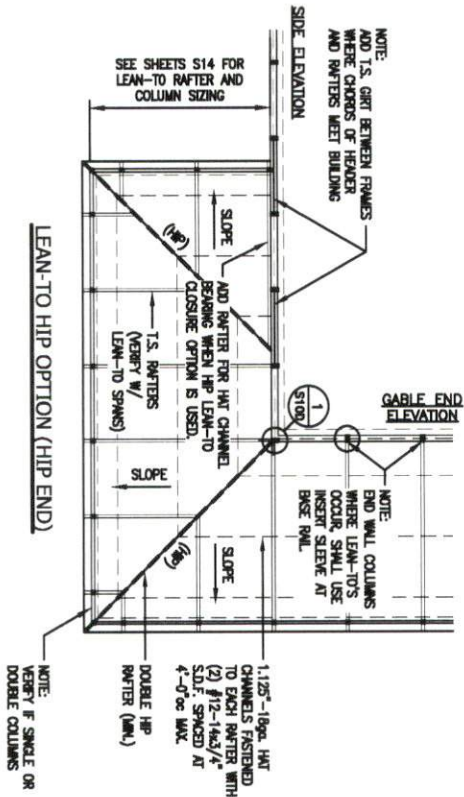
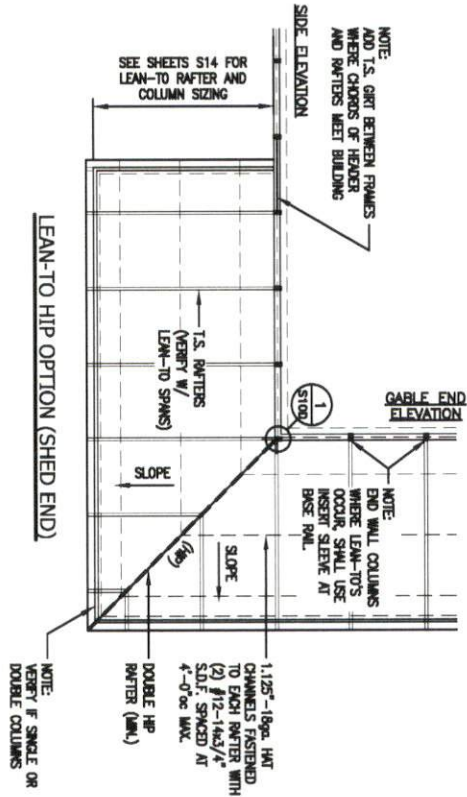
<p>JCMT ASSOCIATES, PLLC PO BOX 27 Pilot Mountain, NC 28641 828-310-7160</p>	Project No. 2426-0091	Sheet No. S8A
	<p>FREDDY CASTRO GUERRA 34 N MCKINLEY ST COATS, NC 27521</p>	
<p>(HIGH SEISMIC) - OPEN GABLE END BUILDING MAXIMUM > 31' TO < 40' WIDE x < 20' MAXIMUM EAVE HEIGHT (BOX FRAME) (UP TO) 155 M.P.H. WIND ZONE - 35 SNOW LOAD</p>		
Date: 01/31/26	Revisions:	
<p>NORTH CAROLINA PROFESSIONAL SEAL 27874 ENGINEER JASON M. REEP 01/31/2026</p>		

TRUSS CONNECTION DETAILS



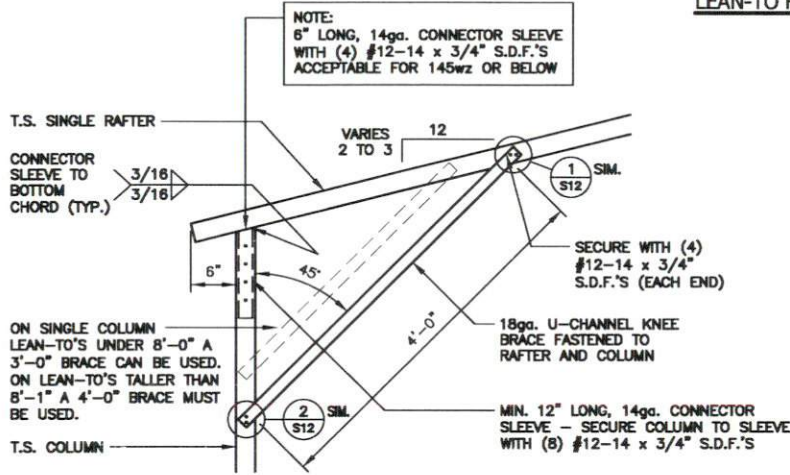
	<p>FREDDY CASTRO GUERRA 34 N MCKINLEY ST COATS, NC 27521</p>		<p>JCMT ASSOCIATES, PLLC PO BOX 27 Pilot Mountain, NC 28641 828-310-7160</p>		<p>Project No. 2426-0091</p>
	<p>Date: 01/31/26</p>	<p>(HIGH SEISMIC) - OPEN GABLE END BUILDING MAXIMUM >31' TO <40' WIDE x <20' MAXIMUM EAVE HEIGHT (BOX FRAME) (UP TO) 155 M.P.H. WIND ZONE - 35 SNOW LOAD</p>			<p>Sheet No. S8B</p>

LEAN-TO HIP FRAMING OPTIONS

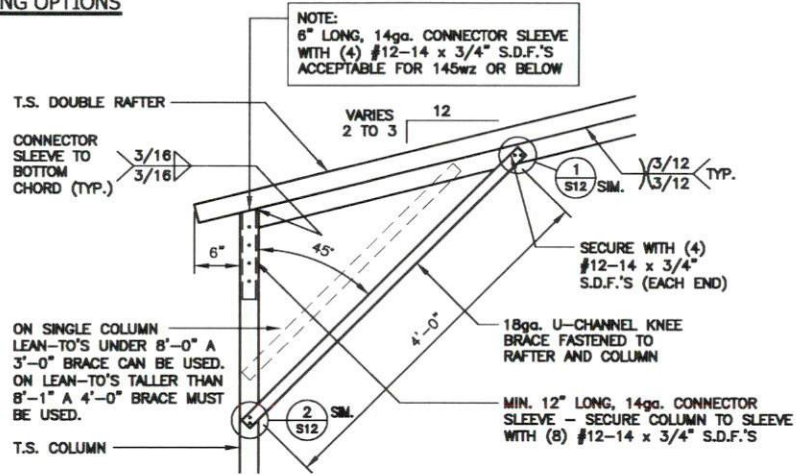


	<p>FREDDY CASTRO GUERRA 34 N MCKINLEY ST COATS, NC 27521</p>		<p>JCMT ASSOCIATES, PLLC PO BOX 27 Pilot Mountain, NC 28641 828-310-7160</p>	Project No. 2426-0091
	Date: 01/31/26	<p>(HIGH SEISMIC) - OPEN GABLE END BUILDING MAXIMUM >31' TO <40' WIDE x <20' MAXIMUM EAVE HEIGHT (BOX FRAME) (UP TO) 155 M.P.H. WIND ZONE - 35 SNOW LOAD</p>		Sheet No. S9A
Revisions:				

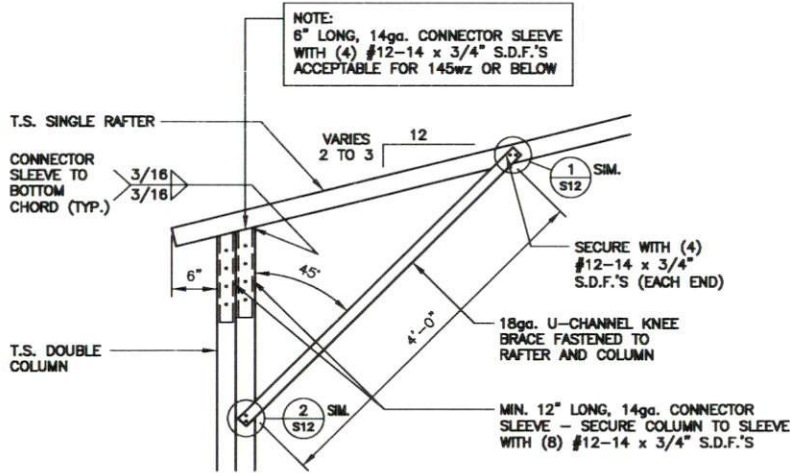
LEAN-TO FRAMING OPTIONS



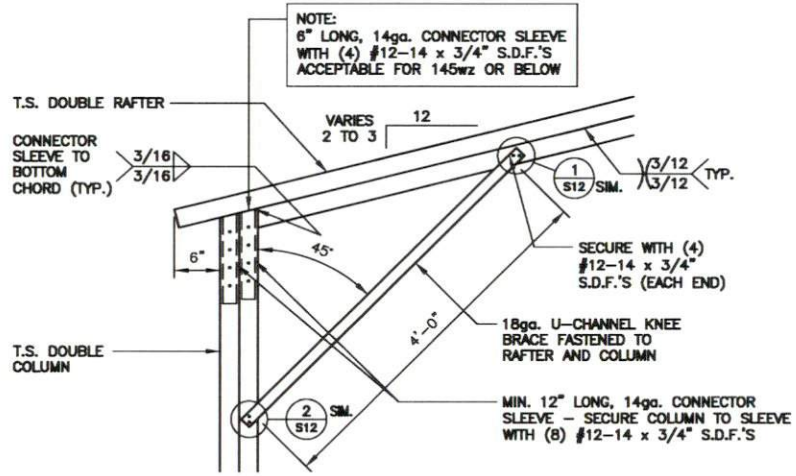
1
S10
SCALE: 3/4" = 1'-0"



1A
S10
SCALE: 3/4" = 1'-0"



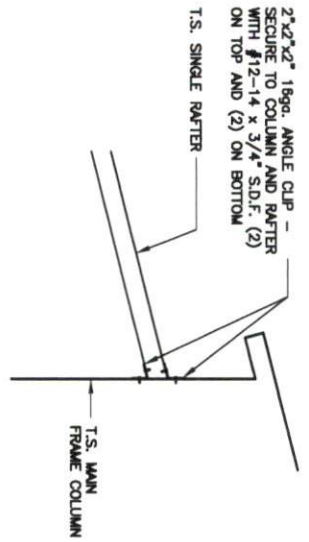
2
S10
SCALE: 3/4" = 1'-0"



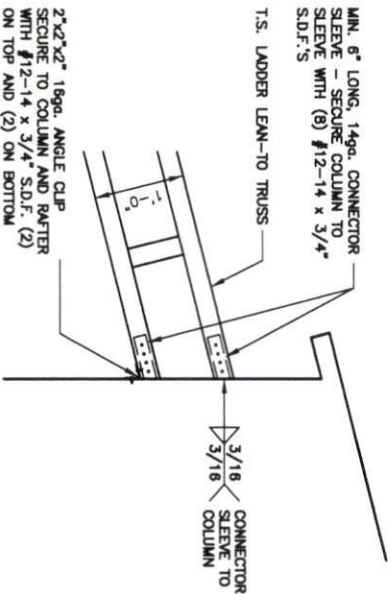
2A
S10
SCALE: 3/4" = 1'-0"

<p>JCMT ASSOCIATES, PLLC PO BOX 27 Pilot Mountain, NC 28641 828-310-7160</p>	Project No. 2426-0091	Sheet No. S10
	<p>FREDDY CASTRO GUERRA 34 N MCKINLEY ST COATS, NC 27521</p>	
<p>(HIGH SEISMIC) - OPEN GABLE END BUILDING MAXIMUM >31' TO <40' WIDE x <20' MAXIMUM EAVE HEIGHT (BOX FRAME) (UP TO) 155 M.P.H. WIND ZONE - 35 SNOW LOAD</p>		
Date: 01/31/26	Revisions:	

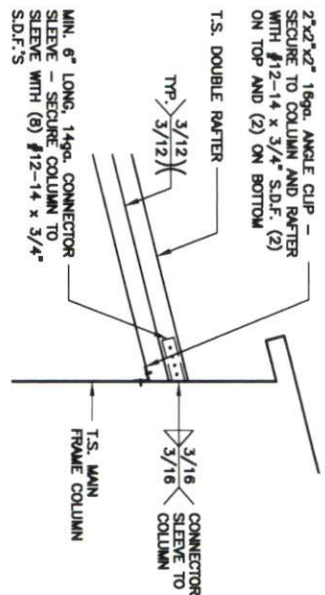
LEAN-TO FRAMING OPTIONS



1 CONNECTION DETAIL
SCALE: 3/4" = 1'-0"



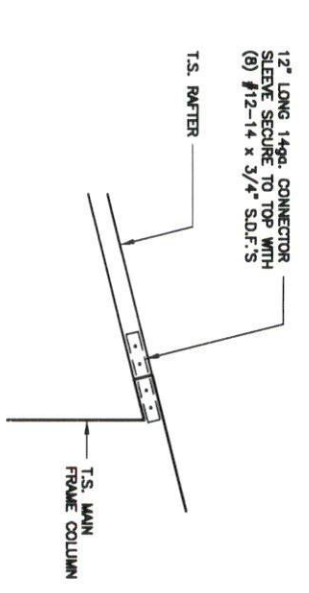
2 CONNECTION DETAIL
SCALE: 3/4" = 1'-0"



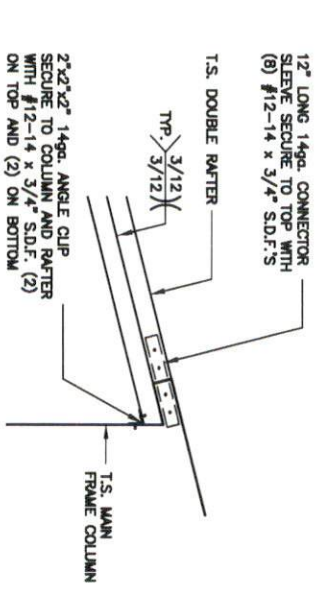
1A CONNECTION DETAIL
SCALE: 3/4" = 1'-0"

	<p>FREDDY CASTRO GUERRA 34 N MCKINLEY ST COATS, NC 27521</p>		<p>JCMT ASSOCIATES, PLLC PO BOX 27 Pilot Mountain, NC 28641 828-310-7160</p>		<p>Project No. 2426-0091</p>
	<p>Date: 01/31/26</p>	<p>(HIGH SEISMIC) - OPEN GABLE END BUILDING MAXIMUM >31' TO <40' WIDE x <20' MAXIMUM EAVE HEIGHT (BOX FRAME) (UP TO) 155 M.P.H. WIND ZONE - 35 SNOW LOAD</p>			<p>Sheet No. S10B</p>

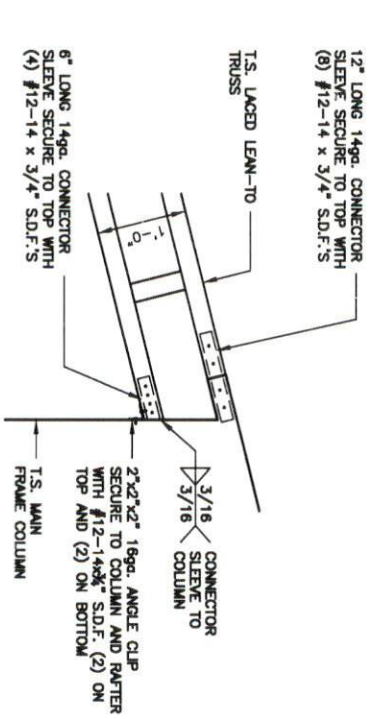
LEAN-TO FRAMING OPTIONS



1
S10C
LEAN-TO SINGLE RAFTER / BUILDING FRAME
(FLUSH) CONNECTION DETAIL
SCALE: 3/4" = 1'-0"



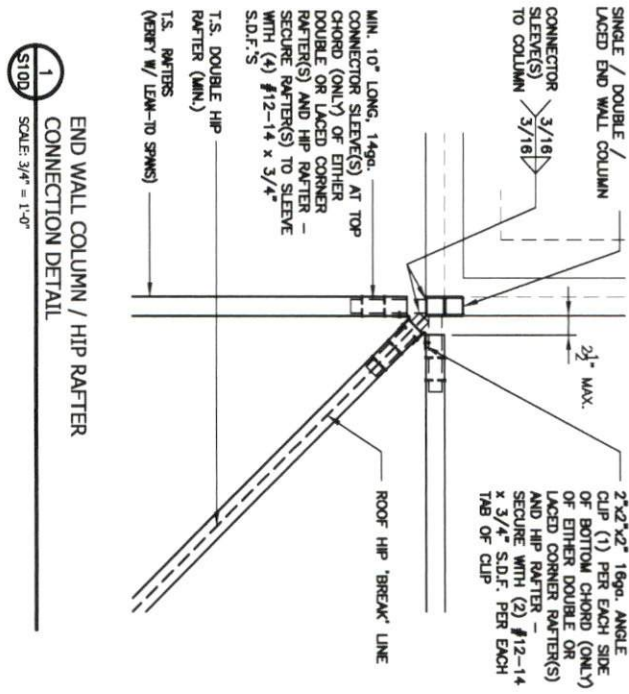
1A
S10C
LEAN-TO SINGLE RAFTER / BUILDING FRAME
(FLUSH) CONNECTION DETAIL
SCALE: 3/4" = 1'-0"



2
S10C
LEAN-TO SINGLE RAFTER / BUILDING FRAME
(FLUSH) CONNECTION DETAIL
SCALE: 3/4" = 1'-0"

	<p>FREDDY CASTRO GUERRA 34 N MCKINLEY ST COATS, NC 27521</p>		<p>JCMT ASSOCIATES, PLLC PO BOX 27 Pilot Mountain, NC 28641 828-310-7160</p>	
	<p>Date: 01/31/26</p>	<p>(HIGH SEISMIC) - OPEN GABLE END BUILDING MAXIMUM >31' TO <40' WIDE x <20' MAXIMUM EAVE HEIGHT (BOX FRAME) (UP TO) 155 M.P.H. WIND ZONE - 35 SNOW LOAD</p>		<p>Project No. 2426-0091</p>
<p>Revisions: -</p>			<p>Sheet No. S10C</p>	

LEAN-TO FRAMING OPTIONS

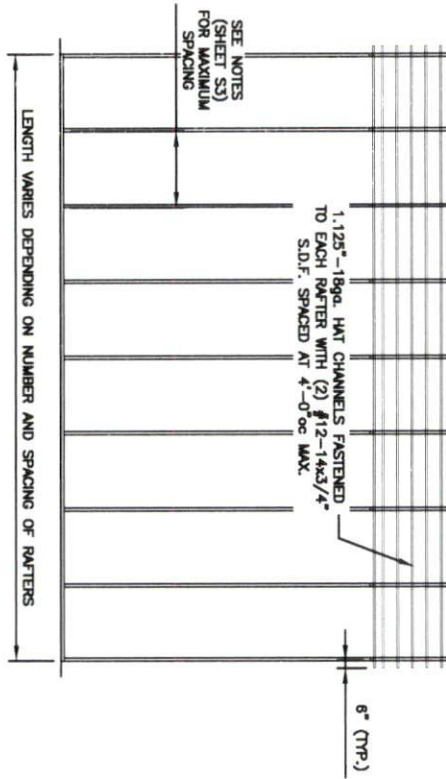


END WALL COLUMN / HIP RAFTER CONNECTION DETAIL

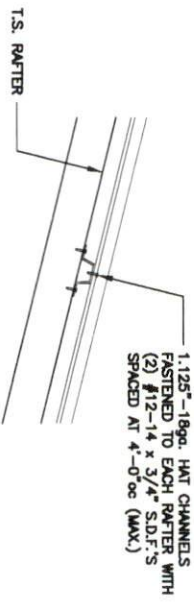
1
S10D SCALE: 3/4" = 1'-0"

	<p>FREDDY CASTRO GUERRA 34 N MCKINLEY ST COATS, NC 27521</p>		<p>JCMT ASSOCIATES, PLLC PO BOX 27 Pilot Mountain, NC 28641 828-310-7160</p>	
	<p>Date: 01/31/26</p>	<p>(HIGH SEISMIC) - OPEN GABLE END BUILDING MAXIMUM >31' TO <40' WIDE x <20' MAXIMUM EAVE HEIGHT (BOX FRAME) (UP TO) 155 M.P.H. WIND ZONE - 35 SNOW LOAD</p>		<p>Project No. 2426-0091</p>
<p>Revisions: -</p>			<p>Sheet No. S10D</p>	

ROOF / HAT CHANNEL ELEVATION



TYPICAL SIDE FRAMING SECTION VERTICAL ROOF / SIDING OPTION



(TYPICAL) ROOF PANEL ATTACHMENT

	<p>FREDDY CASTRO GUERRA 34 N MCKINLEY ST COATS, NC 27521</p>		<p>JCMT ASSOCIATES, PLLC PO BOX 27 Pilot Mountain, NC 28641 828-310-7160</p>	
	<p>Date: 01/31/26</p> <p>Revisions: -</p>	<p>(HIGH SEISMIC) - OPEN GABLE END BUILDING MAXIMUM >31' TO <40' WIDE x <20' MAXIMUM EAVE HEIGHT (BOX FRAME) (UP TO) 155 M.P.H. WIND ZONE - 35 SNOW LOAD</p>		<p>Project No. 2426-0091</p> <p>Sheet No. S11</p>

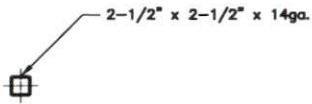
GENERAL NOTE:

PROVIDE DOUBLE WYTHE HEADER ON DOUBLE COLUMNS.

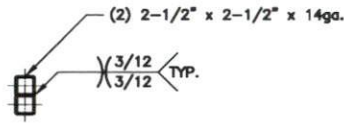
PROVIDE DOUBLE WYTHE HEADER ON LACED COLUMNS

HEADER OPTIONS

SIDE WALL HEADER OPTIONS

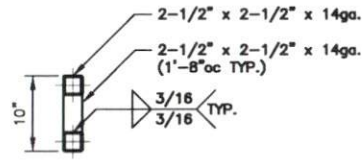


SINGLE T.S. HEADER DETAIL FOR OPENINGS <4'-0"

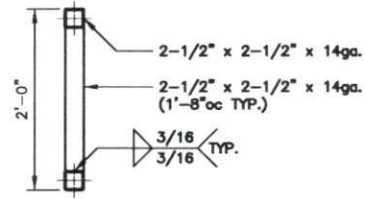


DOUBLE T.S. HEADER DETAIL FOR OPENINGS >4'-0" TO <12'-0"

FABRICATOR NOTE:
MAX. SPAN FOR SINGLE WYTHE HEADER IS 8'-0"

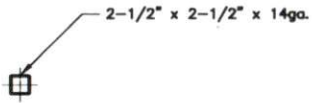


LACED T.S. HEADER DETAIL FOR OPENINGS >12'-1" TO <16'-0"

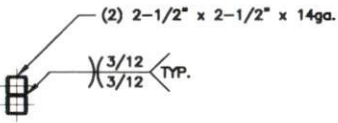


LACED T.S. HEADER DETAIL FOR OPENINGS >16'-1" TO <20'-0"

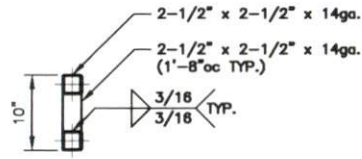
END WALL HEADER OPTIONS



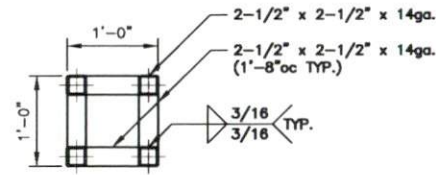
SINGLE T.S. HEADER DETAIL FOR OPENINGS <7'-0"



DOUBLE T.S. HEADER DETAIL FOR OPENINGS >7'-1" TO <16'-0"

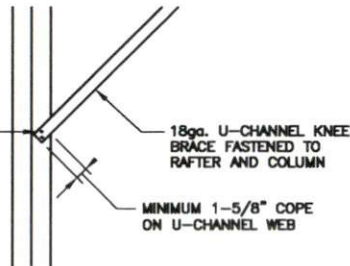


LACED T.S. HEADER DETAIL FOR OPENINGS >16'-1" TO <20'-0"



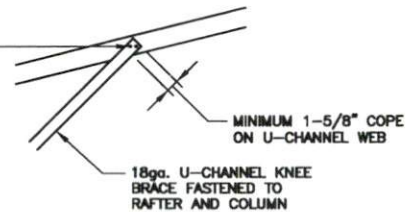
LACED T.S. (BOX) HEADER DETAIL FOR OPENINGS >16'-1" TO <20'-0"

SECURE WITH (4) W12-14x3/4" S.D.F.'S (EACH END) MINIMUM 11/16" SPACING FROM FASTENER TO FASTENER AND FROM FASTENER TO EDGE



1 U-CHANNEL TO COLUMN CONNECTION DETAIL
SCALE: 3/4" = 1'-0"

SECURE WITH (4) W12-14x3/4" S.D.F.'S (EACH END) MINIMUM 11/16" SPACING FROM FASTENER TO FASTENER AND FROM FASTENER TO EDGE



2 U-CHANNEL TO TRUSS CONNECTION DETAIL
SCALE: 3/4" = 1'-0"

<p>JCMT ASSOCIATES, PLLC PO BOX 27 Pilot Mountain, NC 28641 828-310-7160</p>	Project No. 2426-0091
	Sheet No. S12
<p>FREDDY CASTRO GUERRA 34 N MCKINLEY ST COATS, NC 27521</p>	<p>(HIGH SEISMIC) - OPEN GABLE END BUILDING MAXIMUM >31' TO <4.0' WIDE x <20' MAXIMUM EAVE HEIGHT (BOX FRAME) (UP TO) 155 M.P.H. WIND ZONE - 35 SNOW LOAD</p>
Date: 01/31/26	Revisions:



Application for Fire Marshal Plan Review

Type of Review Requested:

Site Plan Review

Building Plan Review

Project Information

Project Name: FREDY CASTRO GUERRA / COATS TIRE AUTO

Project Physical Address: 147-E MAIN ST / 34 N MCKINLEY ST

PIN #: COATS N.C. 27521

Plan Information

Plans Submitted by: CARTER DAY

Contact Person: CARTER DAY

Contact Phone #: 919-795-5256

Contact Email: DAMAGE CONTROL VENDOR @GMAIL.COM

Contractor Information

Contractor/Company Name: TRIPLE A STEEL

Company Mailing Address: 200 BLANKET LN EIKIN NC. 28021

Primary Contact Name: ED GRAHAM BUILDING II

Contact Phone #: 743-229-3291

Contact Mail: TEDGAL@TRIPLEASTEELSTRUCTURE.COM

- Plans that are submitted will be reviewed as quickly as possible with an average time of review between 7-10 working days.
- Status checks may be conducted on plan reviews by visiting the eTrakit portal, or by calling the Harnett County Central Permitting Department (910-893-7525, Option #1) or the Harnett County Fire Marshal's Office (910-893-7580).
- Approved plans must be obtained through Central Permitting (via centralpermitting@harnett.org email) at the time of payment; payment can be made over the phone (910-893-7525, Option #1) or at the Central Permitting Office (420 McKinney Parkway Lillington, NC 27546).
- All fees must be paid before any required inspections can be conducted.



Application for Fire Marshal Plan Review

Type of Review Requested:

Site Plan Review

Building Plan Review

Project Information

Project Name: COATS TIRE & AUTO

Project Physical Address: 34.0 MCKENLY ST. COATS N.C. 27521

PIN #:

Plan Information

Plans Submitted by: CARTER DAY

Contact Person: CARTER DAY

Contact Phone #: 919-795-5256

Contact Email: DAMAGE CONTROL VENDOR @ GMAIL . COM

Contractor Information

Contractor/Company Name: TRIPLE A STEEL STRUCTURES

Company Mailing Address: 200 BLANKET LN EIKIN N.C. 28621

Primary Contact Name: ED GRAHAM BUILDING II

Contact Phone #: 743-229-3291

Contact Mail: LEDGAR @ TRIPLESTEELSTRUCTURE . COM

- Plans that are submitted will be reviewed as quickly as possible with an average time of review between 7-10 working days.
- Status checks may be conducted on plan reviews by visiting the eTrakit portal, or by calling the Harnett County Central Permitting Department (910-893-7525, Option #1) or the Harnett County Fire Marshal's Office (910-893-7580).
- Approved plans must be obtained through Central Permitting (via centralpermitting@harnett.org email) at the time of payment; payment can be made over the phone (910-893-7525, Option #1) or at the Central Permitting Office (420 McKinney Parkway Lillington, NC 27546).
- All fees must be paid before any required inspections can be conducted.