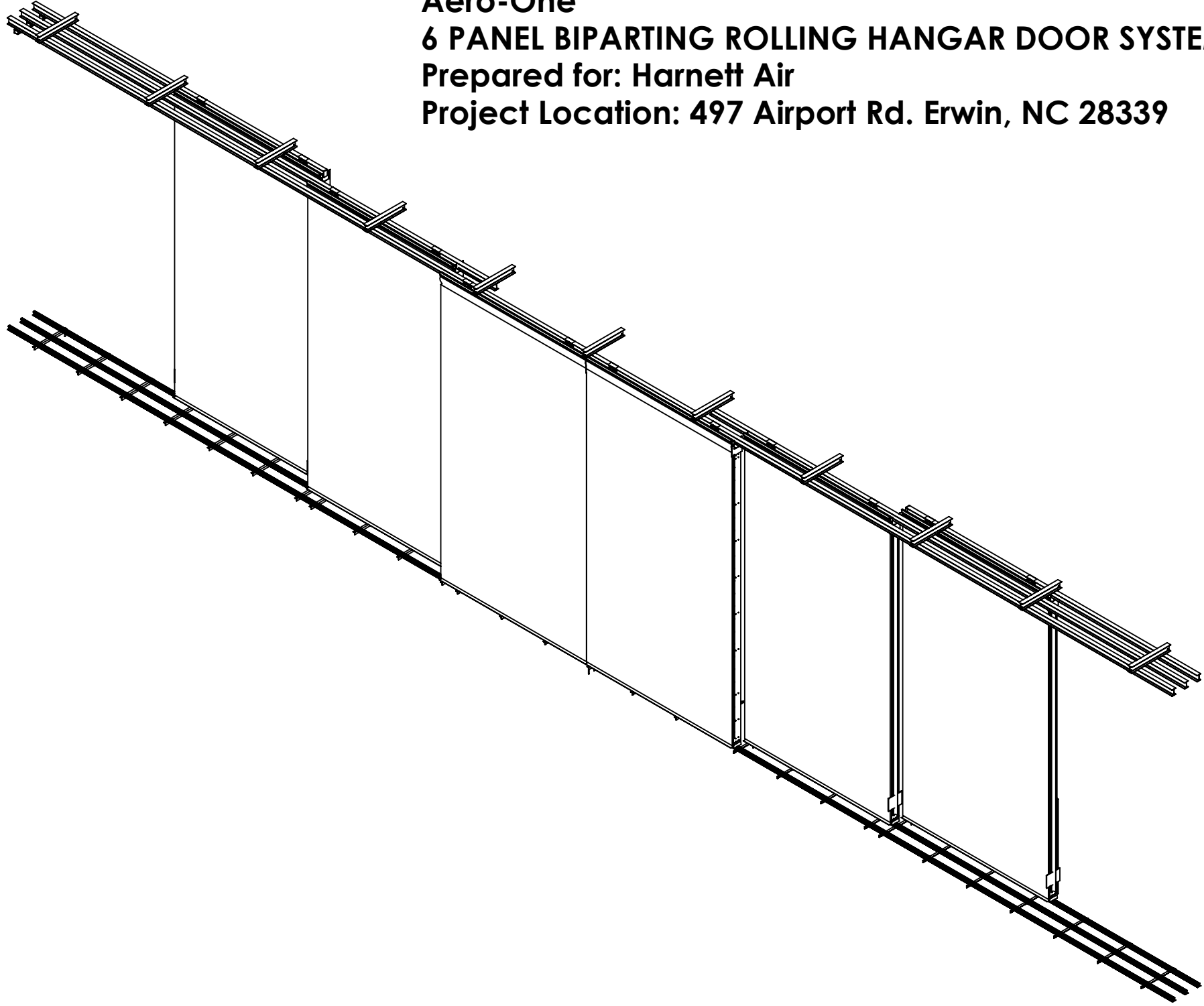


S-1	Cover Page
S-2	Specifications
S-3	Open Position
S-4	Closed Position
S-5	Rail
S-6	Top Track
S-7	Panel Cutsheet
S-8	Section View
S-9	Details 1
S-10	Details 2
S-11	Details 3
S-12	Electrical Details 1
S-13	Electrical Details 2

Aero-One
6 PANEL BIPARTING ROLLING HANGAR DOOR SYSTEM
 Prepared for: Harnett Air
 Project Location: 497 Airport Rd. Erwin, NC 28339



OUTSIDE LOOKING IN



Well Bilt Industries USA, LLC.
 Address: 3001 SW 67th Ave
 Ocala, FL 34474
 Phone: (352) 528-5566

PROPRIETARY AND CONFIDENTIAL
 THE INFORMATION CONTAINED IN THIS DRAWING IS THE SOLE PROPERTY OF WBI. ANY REPRODUCTION IN PART OR AS A WHOLE WITHOUT THE WRITTEN PERMISSION OF WBI IS PROHIBITED.

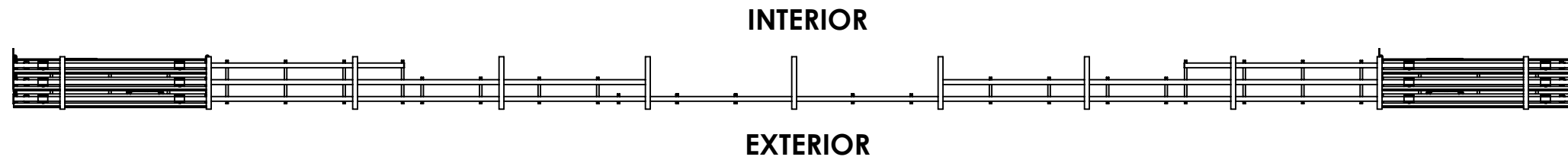
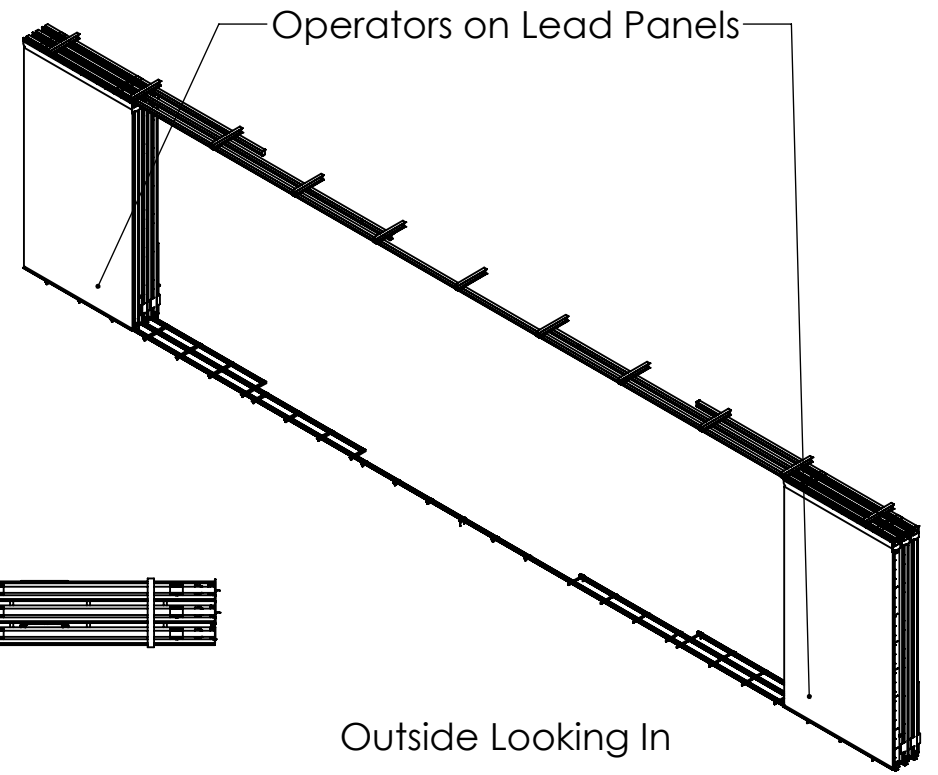
P.E Approval:

Client Signature:

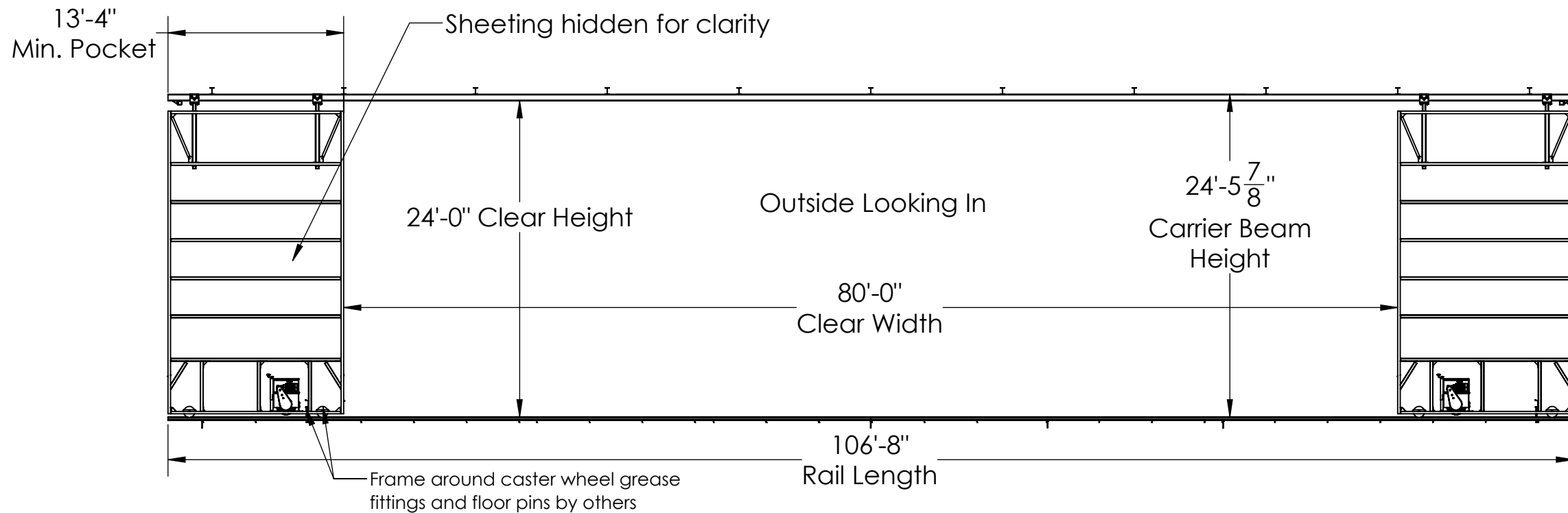
DESIGN DWG: KHALIL S.
 CHECKED:
 MFG DWG:
 MFG. APPR:
 Q.A:
 PERMIT:
 APPROVAL DATE:
 REVISION: A
 REVISION DATE:
 Last Saved: 7/7/2025

Project :Harnett Air	DWG. NO.
Location : 497 Airport Rd. Erwin, NC 28339	S- 1
Customer :Robert Ostendorf	
Title :Cover Page	
Project No:25020	

OPEN POSITION



Outside Looking In



WELLBILT

HANGAR DOORS

Well Bilt Industries USA, LLC.
 Address: 3001 SW 67th Ave
 Ocala, FL 34474
 Phone: (352) 528-5566

PROPRIETARY AND CONFIDENTIAL
 THE INFORMATION CONTAINED IN THIS DRAWING IS THE SOLE PROPERTY OF WBI. ANY REPRODUCTION IN PART OR AS A WHOLE WITHOUT THE WRITTEN PERMISSION OF WBI IS PROHIBITED.

P.E Approval:

Client Signature:

DESIGN DWG: KHALIL S.
 CHECKED:
 MFG DWG:
 MFG APPR:
 Q.A:
 PERMIT:
 APPROVAL DATE:
 REVISION: A
 REVISION DATE:
 Last Saved: 7/7/2025

Project :Harnett Air

Location :497 Airport Rd. Erwin, NC 28339

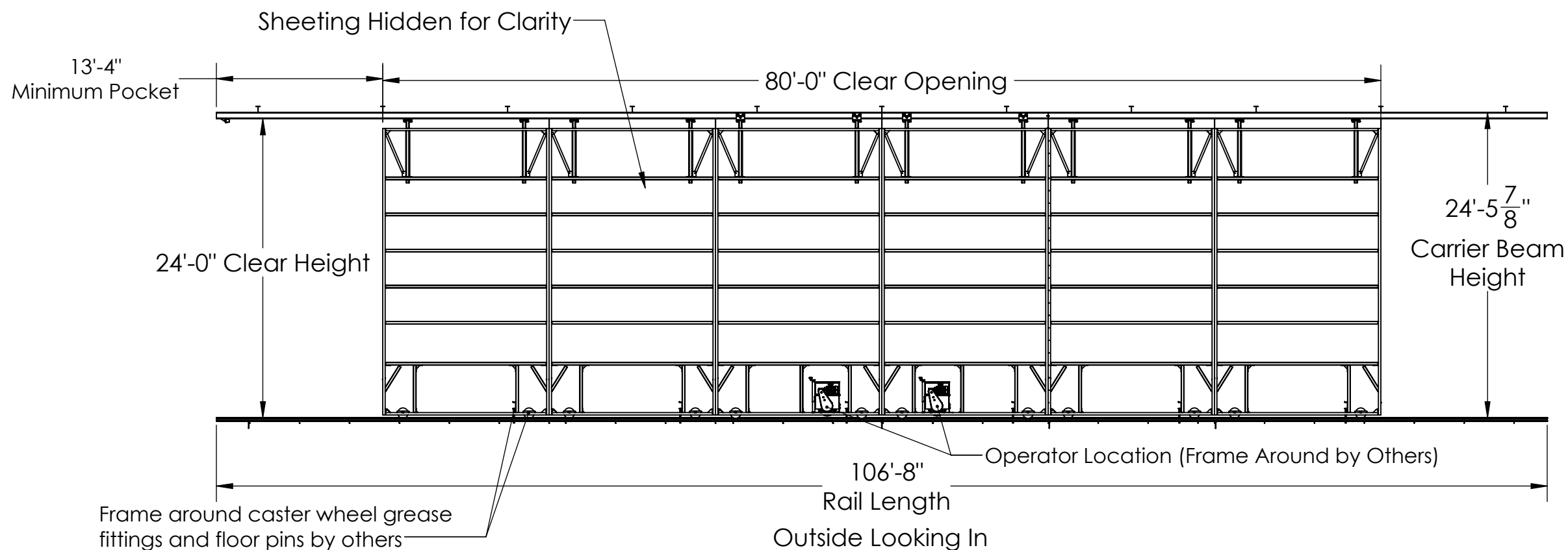
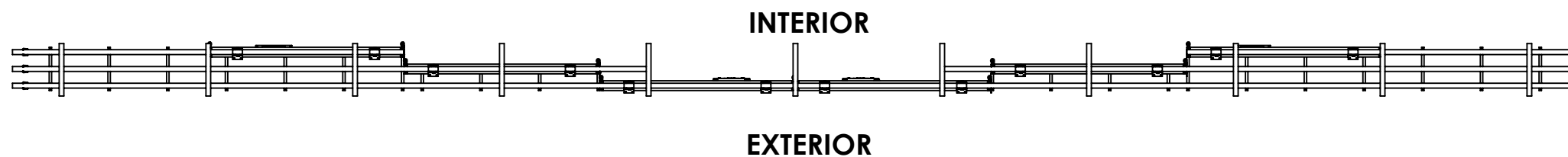
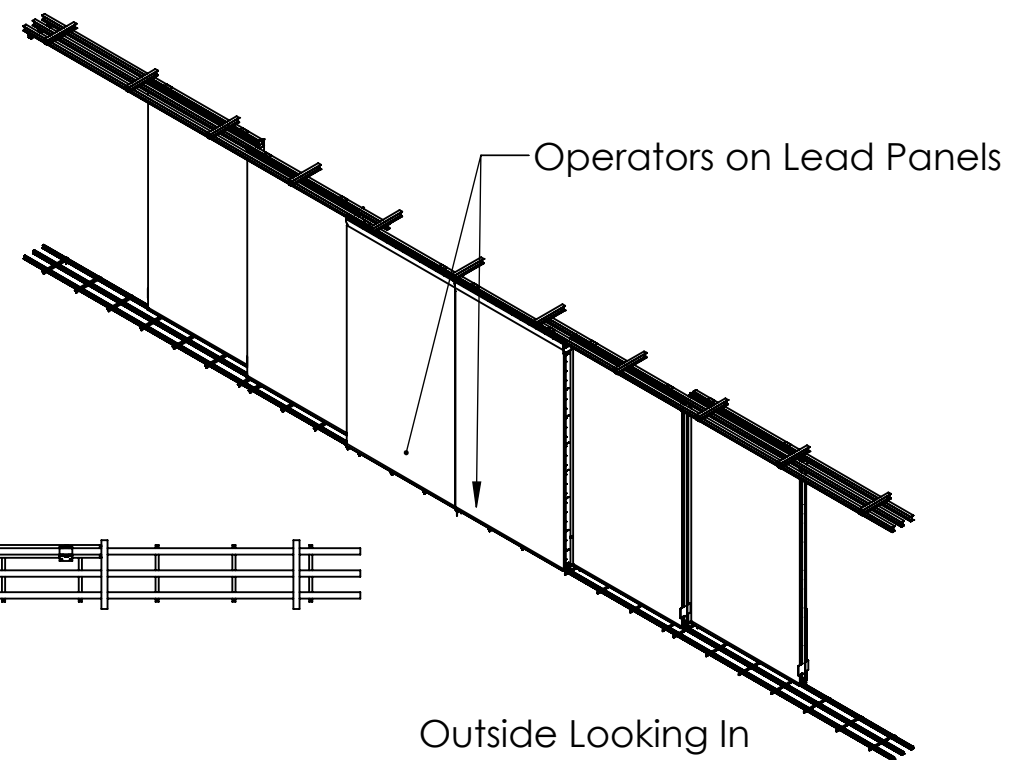
Customer :Robert Ostendorf

Title :Open Position

Project No:25020

DWG. NO. S- 3

CLOSED POSITION



WELLBILT

HANGAR DOORS

Well Bilt Industries USA, LLC.
 Address: 3001 SW 67th Ave
 Ocala, FL 34474
 Phone: (352) 528-5566

PROPRIETARY AND CONFIDENTIAL
 THE INFORMATION CONTAINED IN THIS DRAWING IS THE SOLE PROPERTY OF WBI. ANY REPRODUCTION IN PART OR AS A WHOLE WITHOUT THE WRITTEN PERMISSION OF WBI IS PROHIBITED.

P.E Approval:

Client Signature:

DESIGN DWG: KHALIL S.
 CHECKED:
 MFG DWG:
 MFG APPR:
 Q.A:
 PERMIT:
 APPROVAL DATE:
 REVISION: A
 REVISION DATE:
 Last Saved: 7/7/2025

Project :Harnett Air
 Location :497 Airport Rd. Erwin, NC 28339
 Customer :Robert Ostendorf
 Title :Closed Position
 Project No:25020

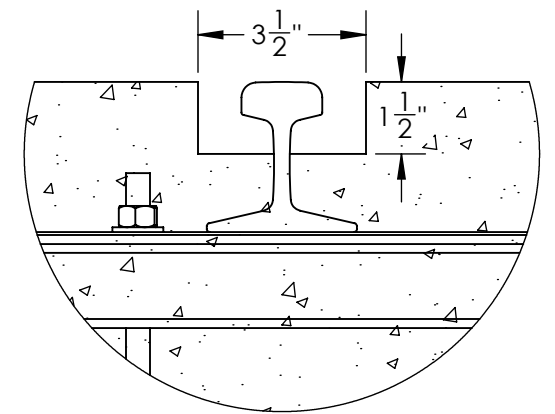
DWG. NO. S- 4

ITEM NO.	QTY.	DESCRIPTION	LENGTH
1	1	30 LBS/ YARD ASCE RAIL	106'-8"
2	2	30 LBS/ YARD ASCE RAIL	40'
3	2	30 LBS/ YARD ASCE RAIL	26'-8"
4	16	L2x2x0.25	8"
5	8	L2x2x0.25	1'-9 3/4"
6	14	L2x2x0.25	2'-11 1/2"

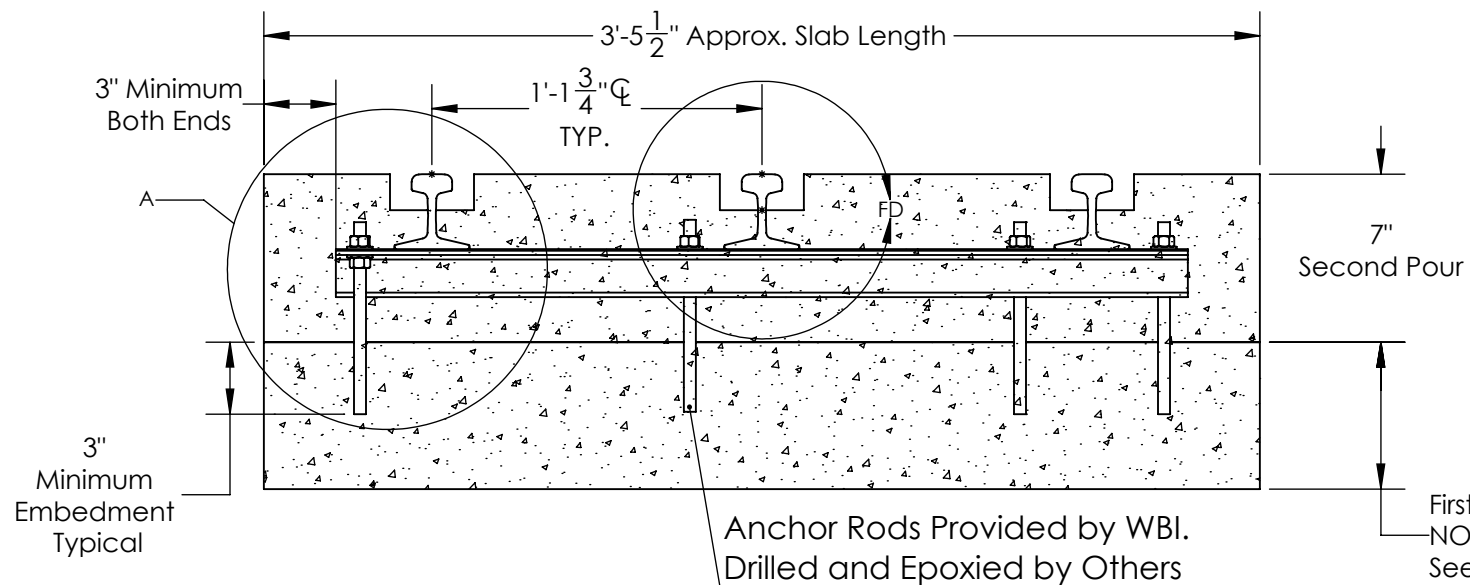
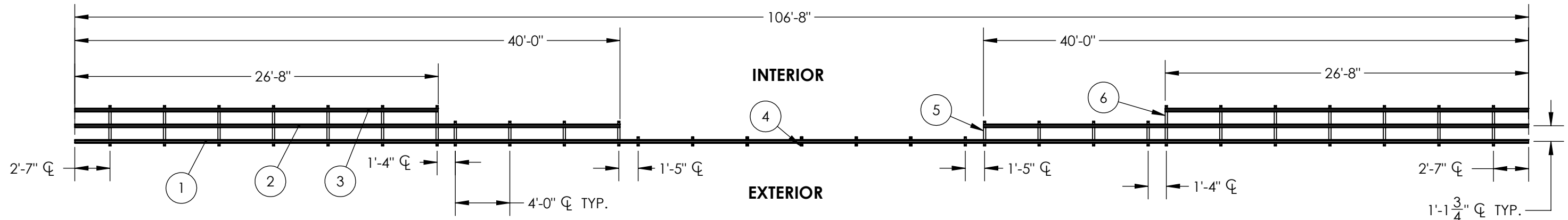
ITEM NO.	QTY.	PART NUMBER	DESCRIPTION
H1	76	MPAT0808	1/2-13 Threaded Rod, Plain, 8" Long
H2	152	HDWHN08	1/2" -13 Hex Nut
H3	152	HDWSA08	1/2" Flat Washer

NOTE:

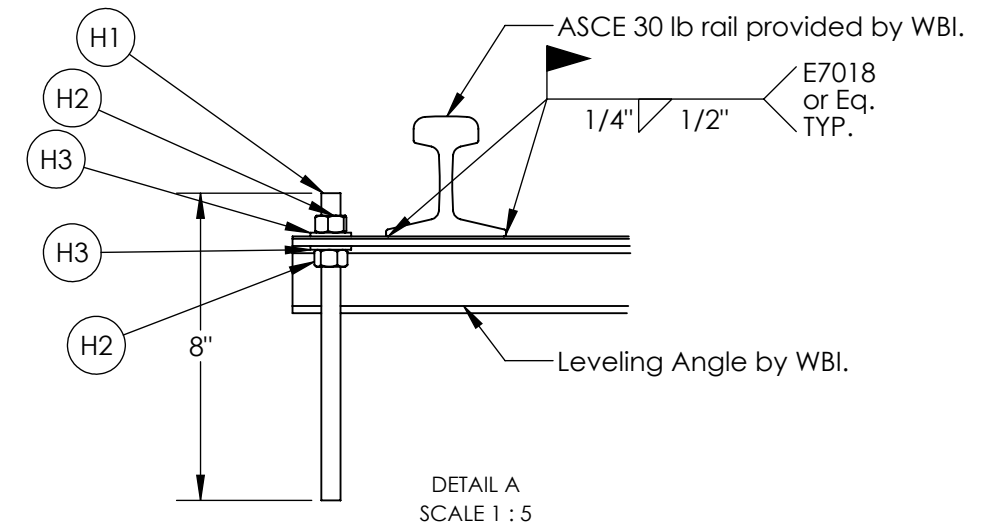
Concrete contractor to ensure finish floor flush with rail and level throughout opening.
WBI is not responsible for design of concrete foundation.



DETAIL FD
SCALE 1 : 4



NOTE: Footing extends beyond shown detail.
See foundation plan for more details.



Well Bilt Industries USA, LLC.
Address: 3001 SW 67th Ave
Ocala, FL 34474
Phone: (352) 528-5566

PROPRIETARY AND CONFIDENTIAL

THE INFORMATION CONTAINED IN THIS DRAWING IS THE SOLE PROPERTY OF WBI. ANY REPRODUCTION IN PART OR AS A WHOLE WITHOUT THE WRITTEN PERMISSION OF WBI IS PROHIBITED.

P.E Approval:

Client Signature:

DESIGN DWG: KHALIL S.
CHECKED:
MFG DWG:
MFG APPR:
Q.A:
PERMIT:
APPROVAL DATE:
REVISION: A
REVISION DATE:
Last Saved: 7/7/2025

Project :Harnett Air

Location :497 Airport Rd. Erwin, NC 28339

Customer :Robert Ostendorf

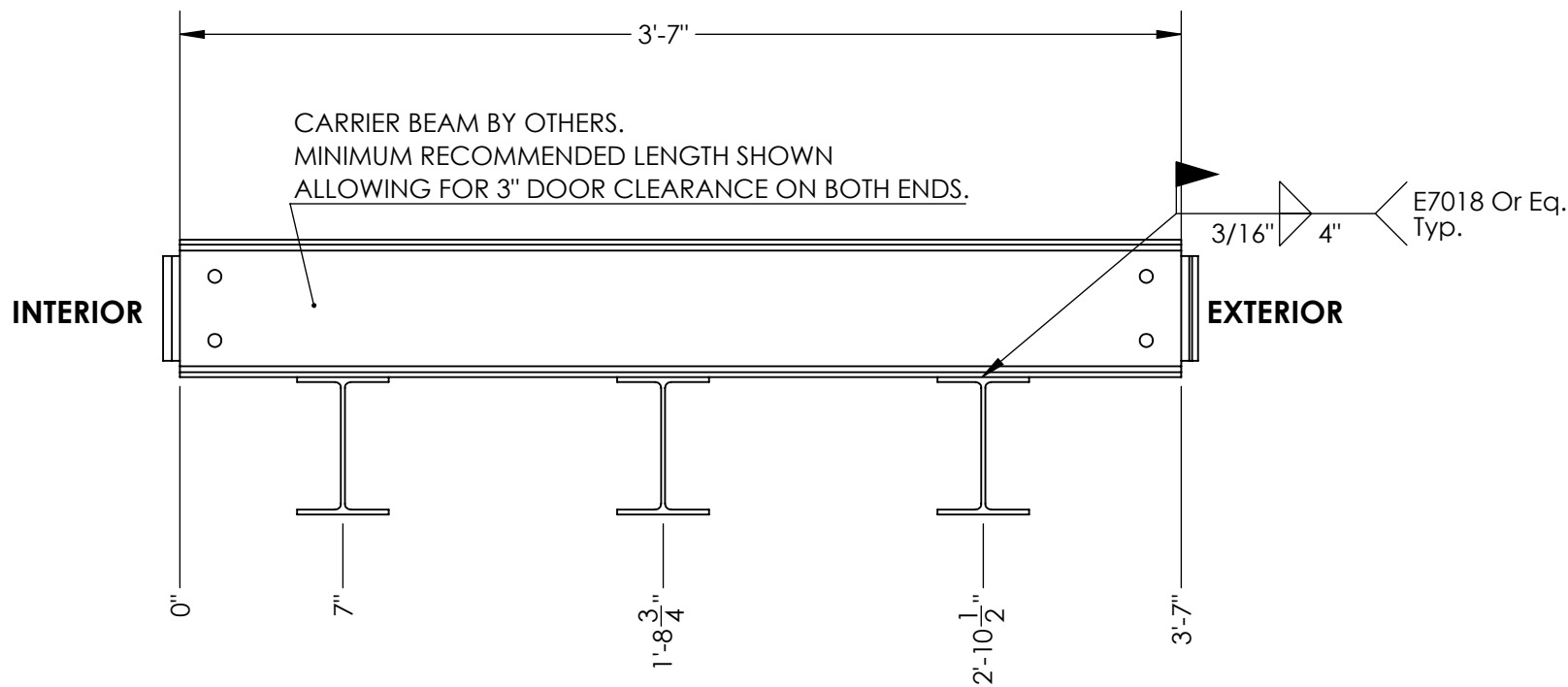
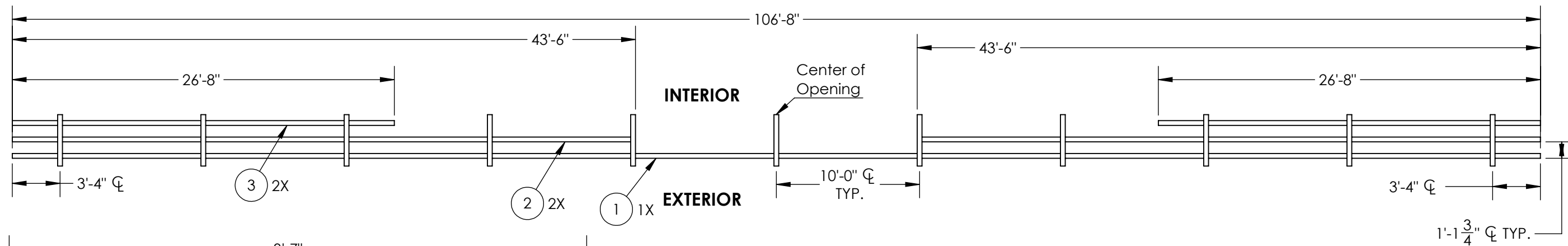
Title :Rail

Project No:25020

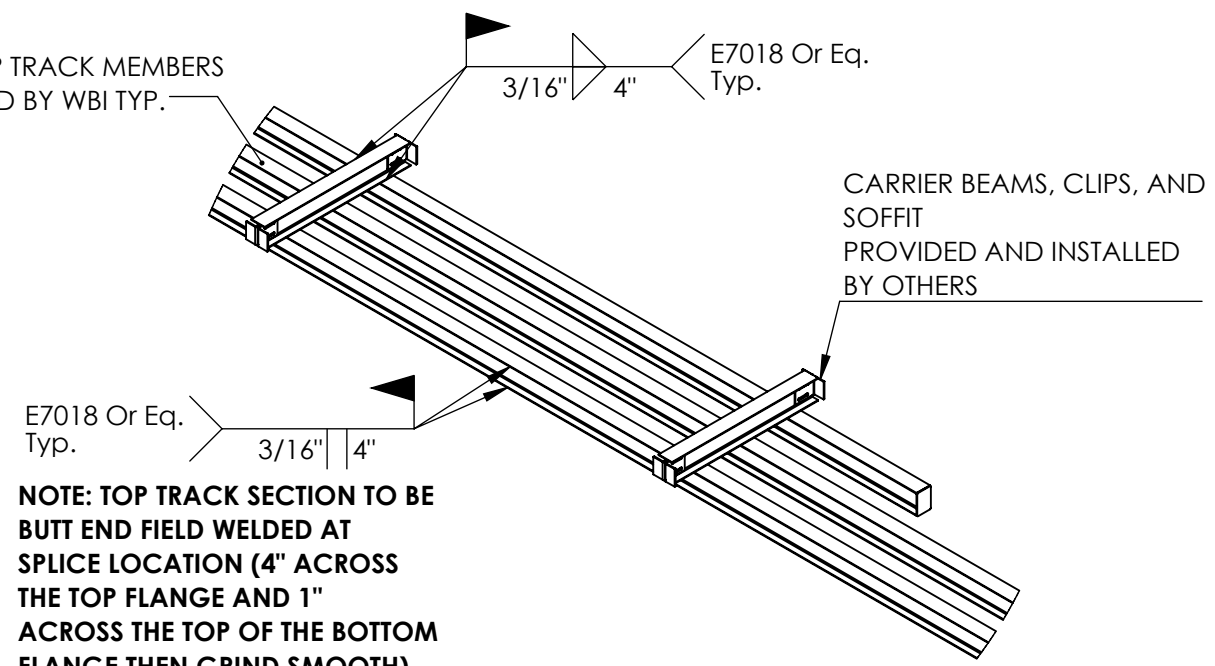
DWG. NO.
S- 5

ITEM NO.	QTY.	DESCRIPTION	LENGTH
1	1	W6x9	106'-8"
2	2	W6x9	43'-6"
3	2	W6x9	26'-8"

TOP TRACK WEIGHT (ESTIMATED) = 2,275 lbs



ALL TOP TRACK MEMBERS SUPPLIED BY WBI TYP.



NOTE: TOP TRACK SECTION TO BE BUTT END FIELD WELDED AT SPLICE LOCATION (4" ACROSS THE TOP FLANGE AND 1" ACROSS THE TOP OF THE BOTTOM FLANGE THEN GRIND SMOOTH)

TYPICAL W6X9 TOP TRACK WELDING DETAILS



Well Bilt Industries USA, LLC.
Address: 3001 SW 67th Ave
Ocala, FL 34474
Phone: (352) 528-5566

PROPRIETARY AND CONFIDENTIAL
THE INFORMATION CONTAINED IN THIS DRAWING IS THE SOLE PROPERTY OF WBI. ANY REPRODUCTION IN PART OR AS A WHOLE WITHOUT THE WRITTEN PERMISSION OF WBI IS PROHIBITED.

P.E Approval:

Client Signature:

DESIGN DWG: KHALIL S.
CHECKED:
MFG DWG:
MFG APPR:
Q.A:
PERMIT:
APPROVAL DATE:
REVISION: A
REVISION DATE:
Last Saved: 7/7/2025

Project :Harnett Air

Location :497 Airport Rd. Erwin, NC 28339

Customer :Robert Ostendorf

Title :Top Track

Project No:25020

DWG. NO.
S- 6

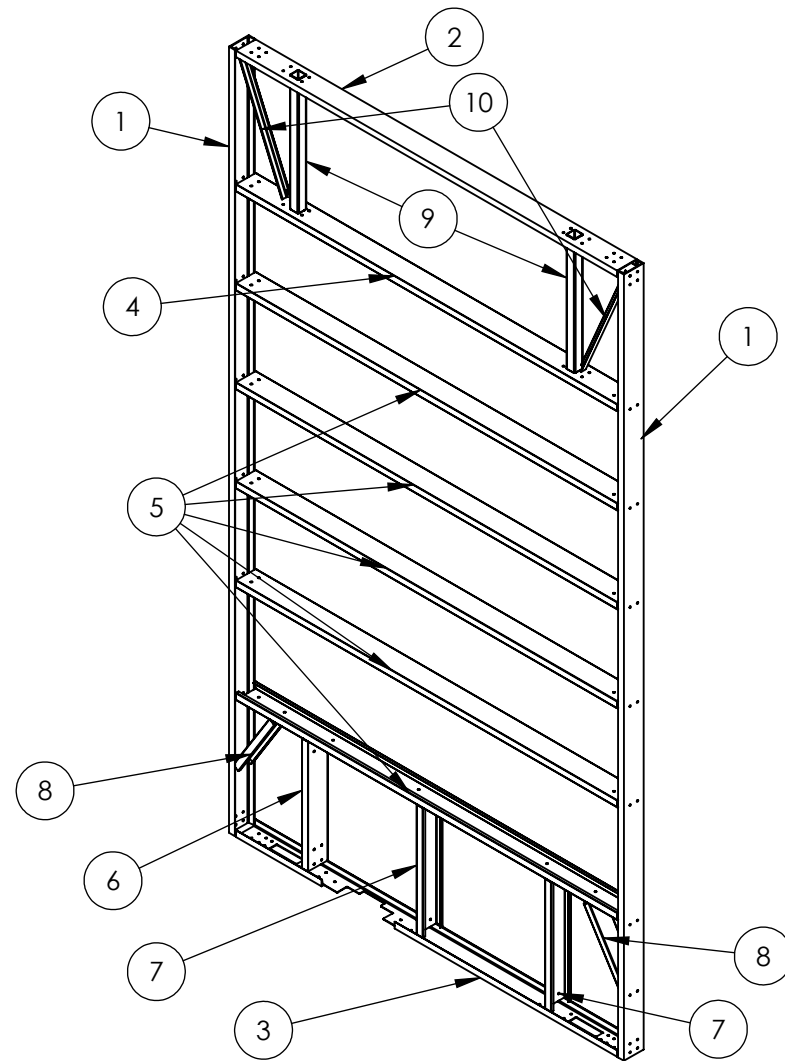
ITEM NO.	QTY.	DESCRIPTION	LENGTH
1	2	C8x13.75	22'-11 13/16"
2	1	C8x11.5	12'-10 5/16"
3	1	C8x11.5	12'-10 5/16"
4	1	8x2.5x14 Gauge Cee	12'-10 5/16"
5	5	8x2.5x14 Gauge Cee	12'-10 5/16"
6	1	8x2.5x14 Gauge Cee	4'
7	1	8x2.5x14 Gauge Cee	4'
8	2	6x2.5x16 Gauge Cee	2'-3 9/16"
9	2	TS3.5x3.5x0.1875	3'-11"
10	2	L2x2x0.25	3'-9 9/16"

Telescoping Guide Tubes Not Shown.
Structural Steel Only Is Shown. Bracing Gussets And Mounting Pads Are Not Shown.

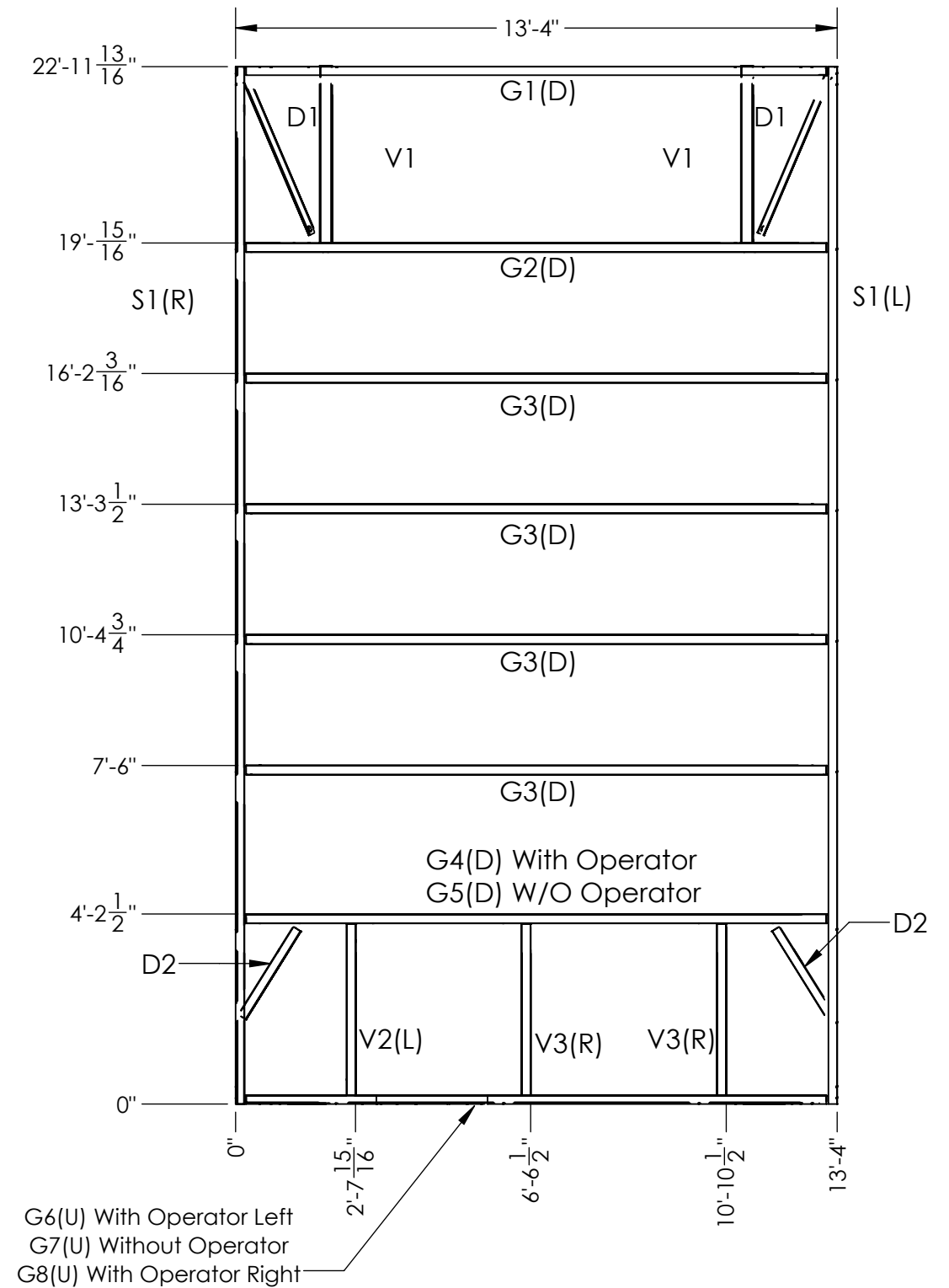
FLANGE NOTES:

(U): Flange Up
(D): Flange Down
(L): Flange Left
(R): Flange Right

**QTY: 4 without operator
2 with operator**



INSIDE LOOKING OUT



PANEL RIDES 2-3/4" A.F.F.



Well Bilt Industries USA, LLC.
Address: 3001 SW 67th Ave
Ocala, FL 34474
Phone: (352) 528-5566

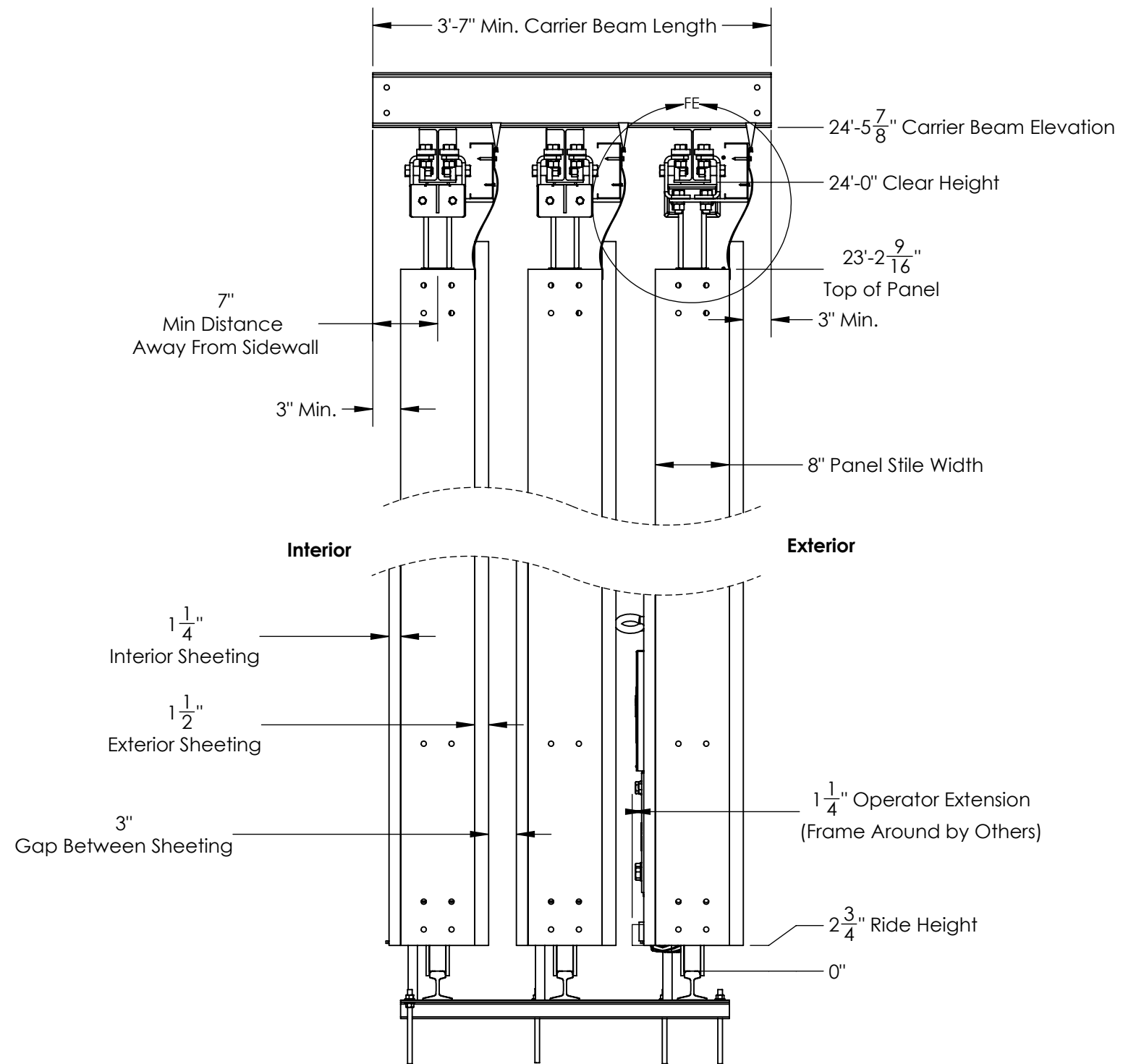
PROPRIETARY AND CONFIDENTIAL
THE INFORMATION CONTAINED IN THIS DRAWING IS THE SOLE PROPERTY OF WBI. ANY REPRODUCTION IN PART OR AS A WHOLE WITHOUT THE WRITTEN PERMISSION OF WBI IS PROHIBITED.

P.E Approval:

Client Signature:

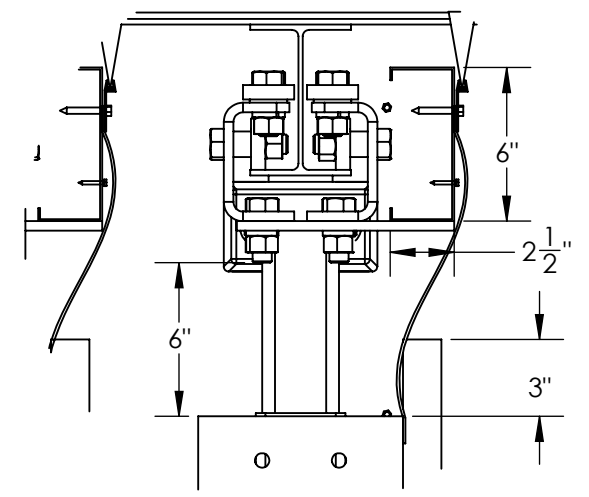
DESIGN DWG: KHALIL S.
CHECKED:
MFG DWG:
MFG APPR:
Q.A:
PERMIT:
APPROVAL DATE:
REVISION: A
REVISION DATE:
Last Saved: 7/7/2025

Project :Harnett Air
Location :497 Airport Rd. Erwin, NC 28339
Customer :Robert Ostendorf
Title :Panel Cutsheet
Project No:25020
DWG. NO. S- 7



SYSTEM DEFLECTION TOLERANCES

3" Upward Deflection
6" Downward Deflection



DETAIL FE
SCALE 2 : 15

Note: Weather Seal Removed For Clarity



Well Bilt Industries USA, LLC.
Address: 3001 SW 67th Ave
Ocala, FL 34474
Phone: (352) 528-5566

PROPRIETARY AND CONFIDENTIAL
THE INFORMATION CONTAINED IN THIS DRAWING IS THE SOLE PROPERTY OF WBI. ANY REPRODUCTION IN PART OR AS A WHOLE WITHOUT THE WRITTEN PERMISSION OF WBI IS PROHIBITED.

P.E Approval:

Client Signature:

DESIGN DWG: KHALIL S.
CHECKED:
MFG DWG:
MFG APPR:
Q.A:
PERMIT:
APPROVAL DATE:
REVISION: A
REVISION DATE:
Last Saved: 7/7/2025

Project :Harnett Air

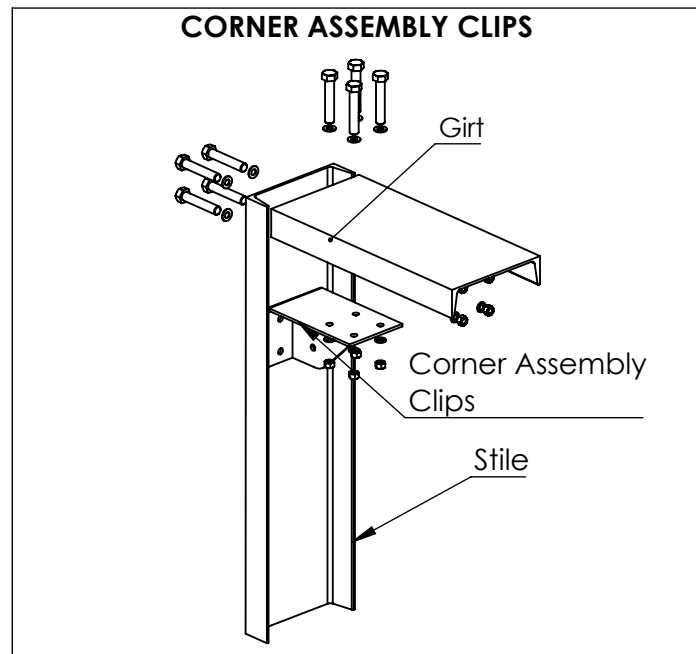
Location :497 Airport Rd. Erwin, NC 28339

Customer :Robert Ostendorf

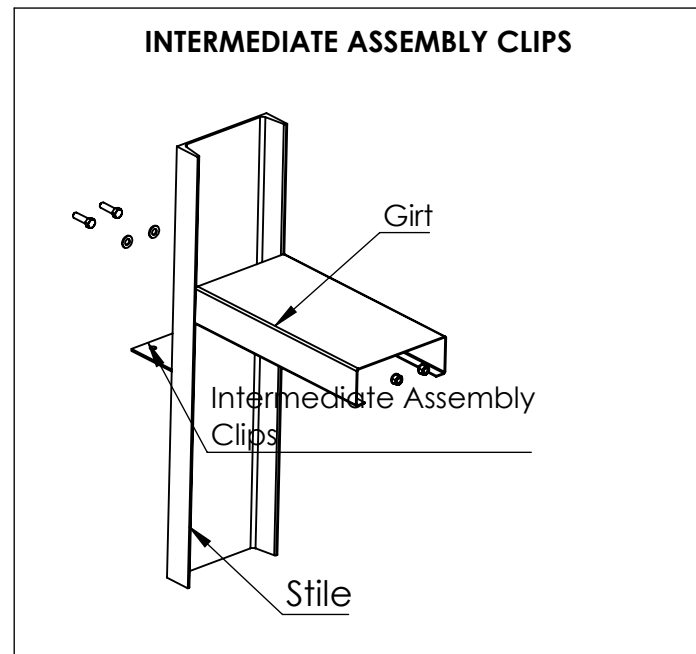
Title :Section View

Project No:25020

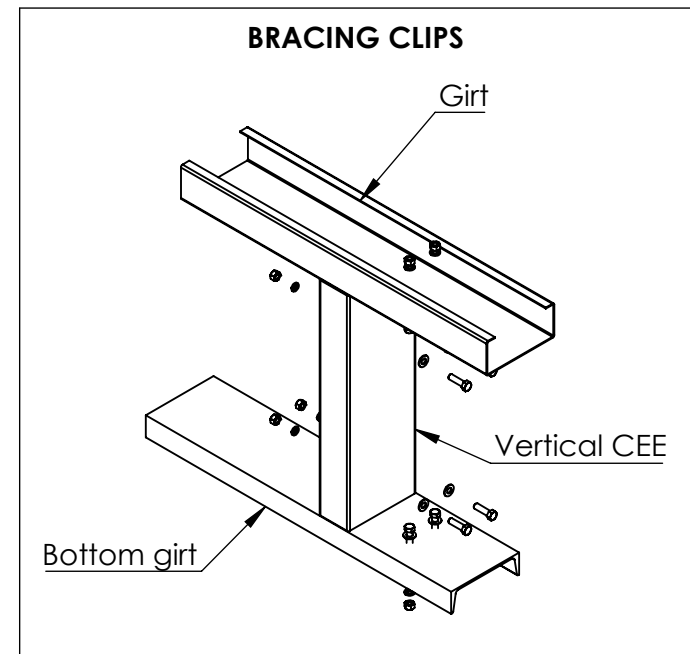
DWG. NO. S- 8



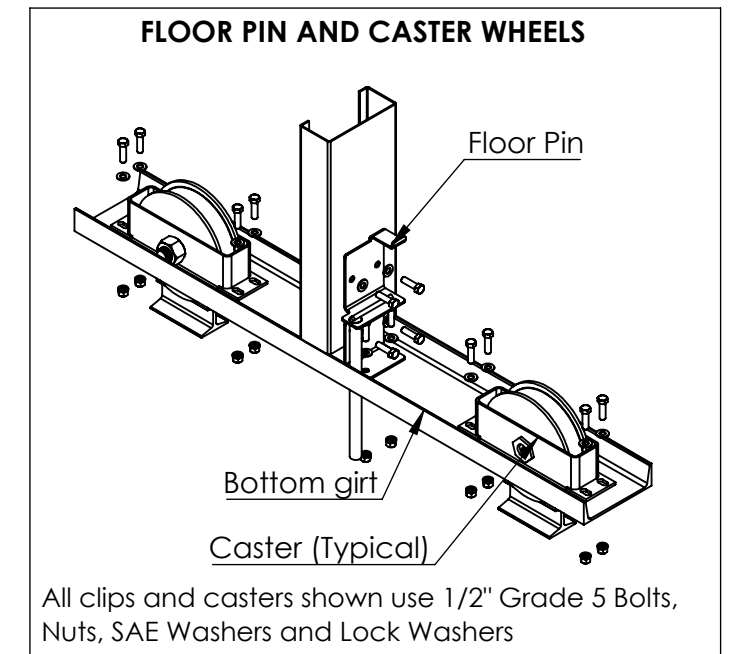
DETAIL 1



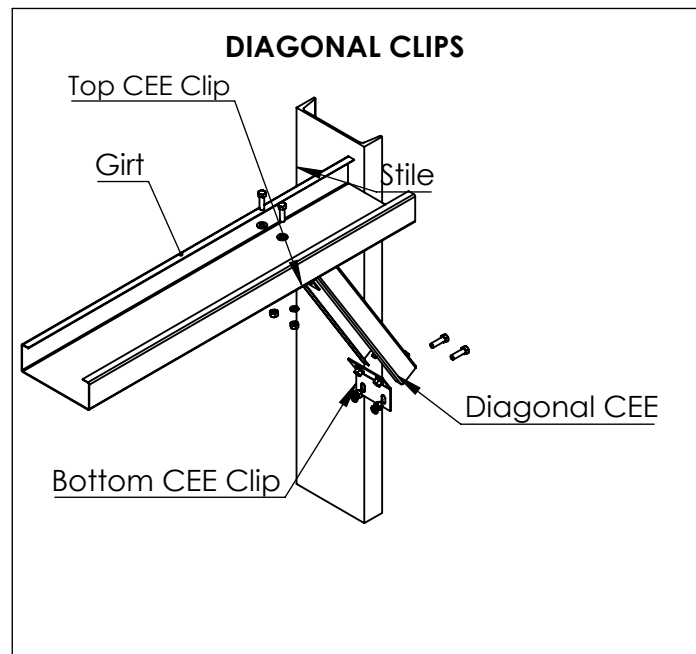
DETAIL 2



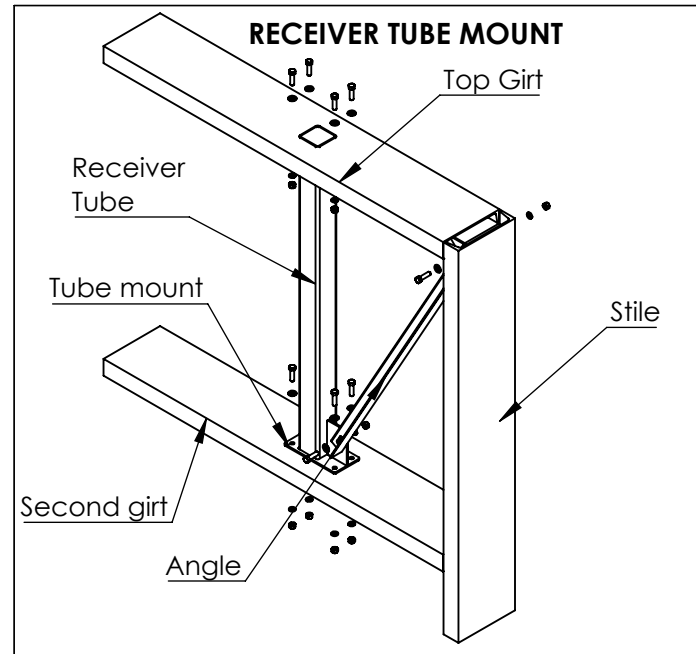
DETAIL 3



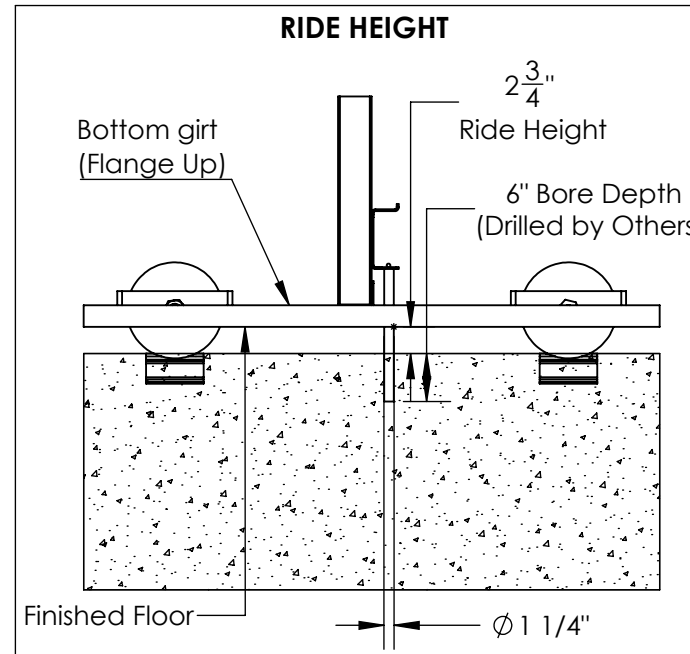
DETAIL 4



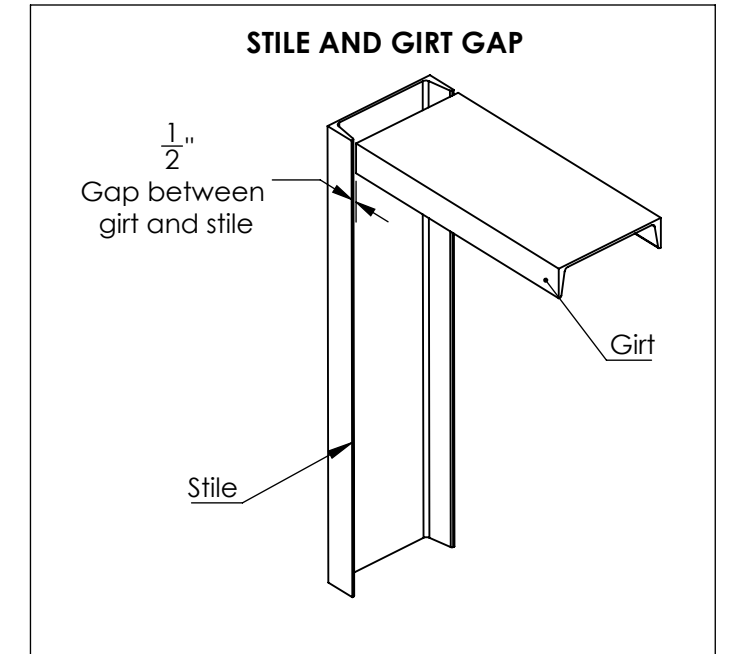
DETAIL 5



DETAIL 6



DETAIL 7



DETAIL 8

WELLBILT
HANGAR DOORS

Well Bilt Industries USA, LLC.
Address: 3001 SW 67th Ave
Ocala, FL 34474
Phone: (352) 528-5566

PROPRIETARY AND CONFIDENTIAL

THE INFORMATION CONTAINED IN THIS DRAWING IS THE SOLE PROPERTY OF WBI. ANY REPRODUCTION IN PART OR AS A WHOLE WITHOUT THE WRITTEN PERMISSION OF WBI IS PROHIBITED.

P.E Approval:

Client Signature:

DESIGN DWG: KHALIL S.
CHECKED:
MFG DWG:
MFG APPR:
Q.A:
PERMIT:
APPROVAL DATE:
REVISION: A
REVISION DATE:
Last Saved: 7/7/2025

Project : Harnett Air

Location : 497 Airport Rd. Erwin, NC 28339

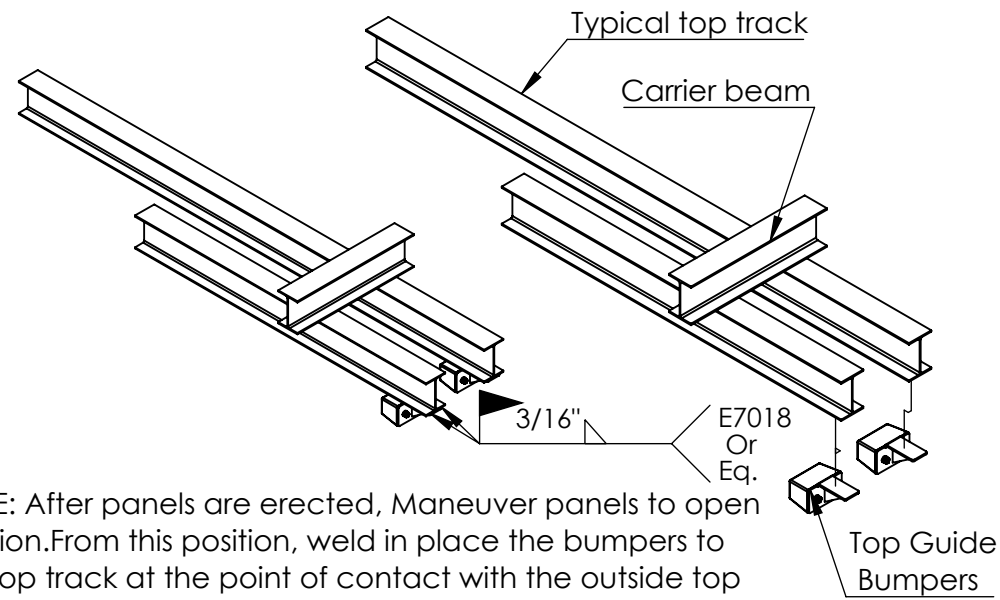
Customer : Robert Ostendorf

Title : Details 1

Project No: 25020

DWG. NO.
S-9

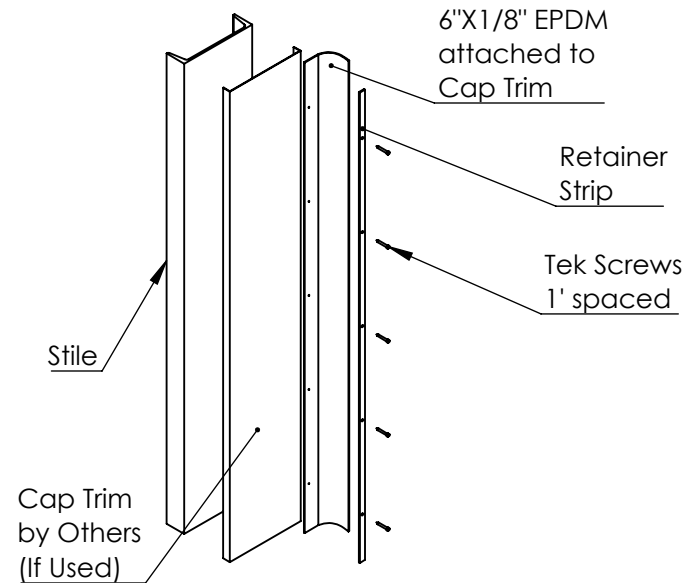
TOP TRACK BUMPERS



NOTE: After panels are erected, Maneuver panels to open position. From this position, weld in place the bumpers to the top track at the point of contact with the outside top guides. ENSURE BUMPERS ARE CENTERED ON THE TRACK.

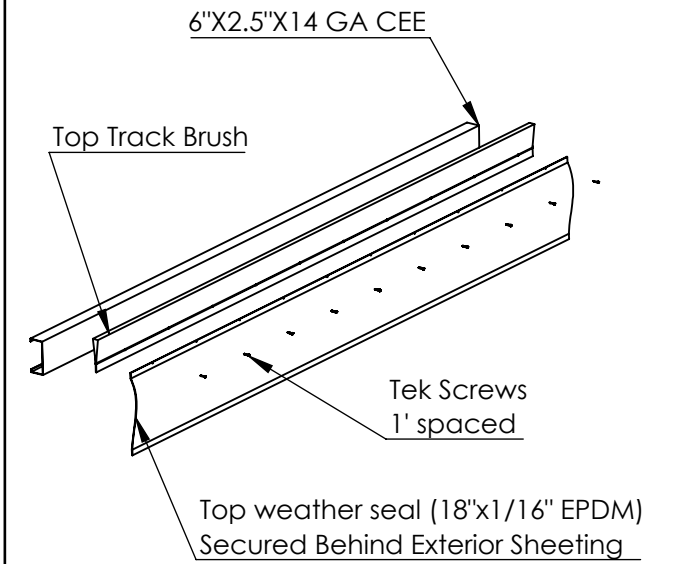
DETAIL 9

VERTICAL WEATHER SEAL



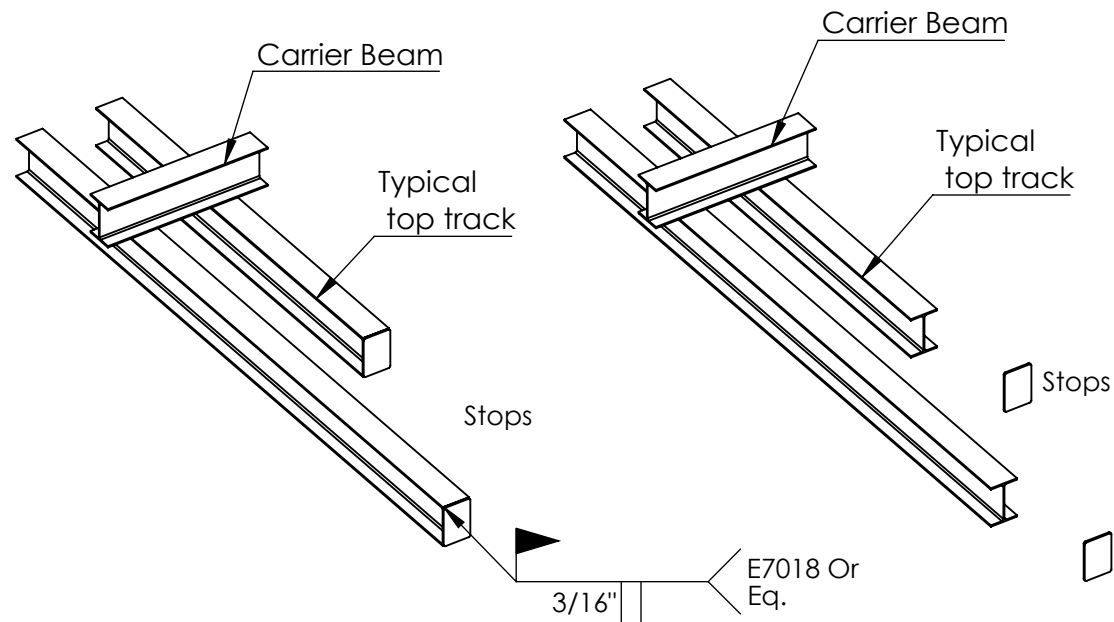
DETAIL 10

TOP WEATHER SEAL



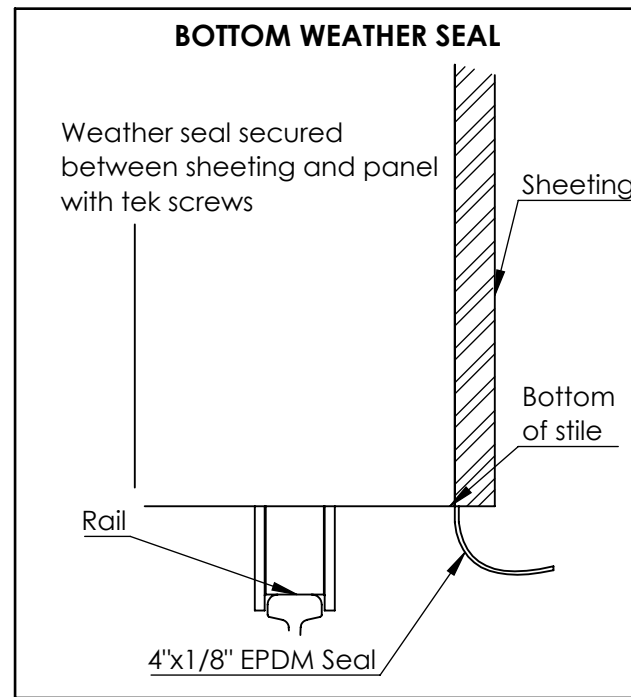
DETAIL 11

TOP TRACK STOPS



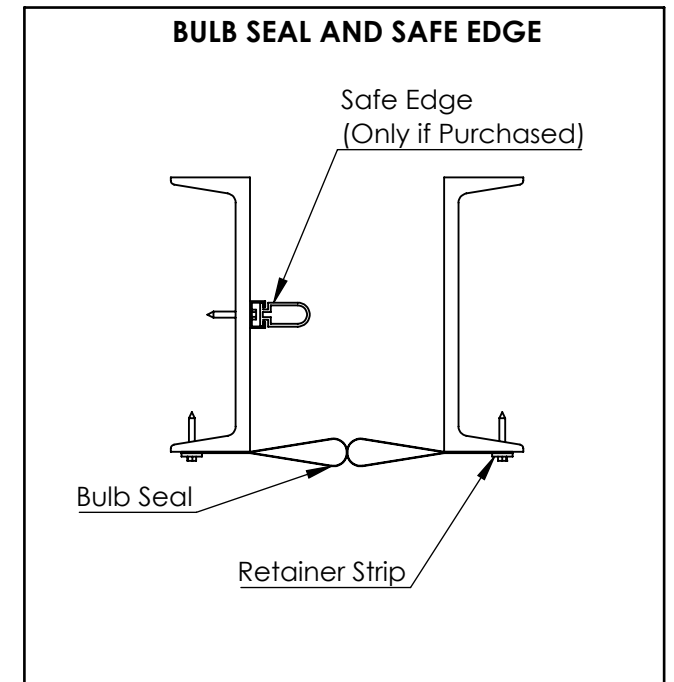
Detail 12

BOTTOM WEATHER SEAL



DETAIL 13

BULB SEAL AND SAFE EDGE



DETAIL 14



Well Bilt Industries USA, LLC.
Address: 3001 SW 67th Ave
Ocala, FL 34474
Phone: (352) 528-5566

PROPRIETARY AND CONFIDENTIAL

THE INFORMATION CONTAINED IN THIS DRAWING IS THE SOLE PROPERTY OF WBI. ANY REPRODUCTION IN PART OR AS A WHOLE WITHOUT THE WRITTEN PERMISSION OF WBI IS PROHIBITED.

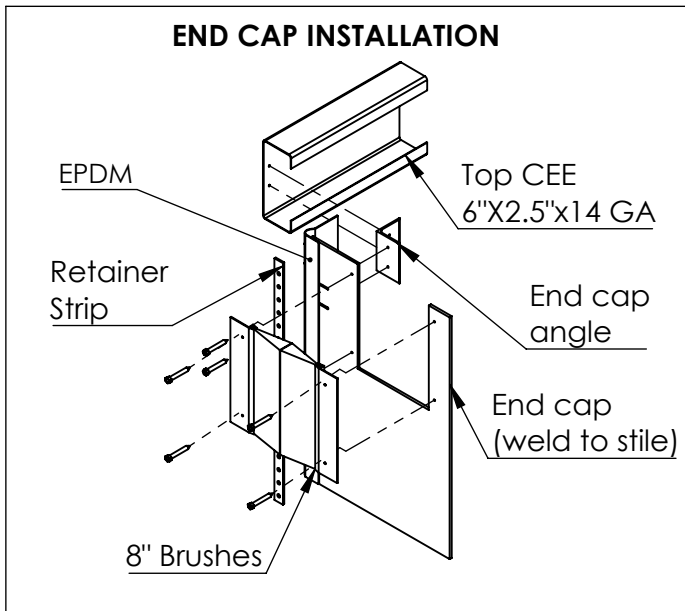
P.E Approval:

Client Signature:

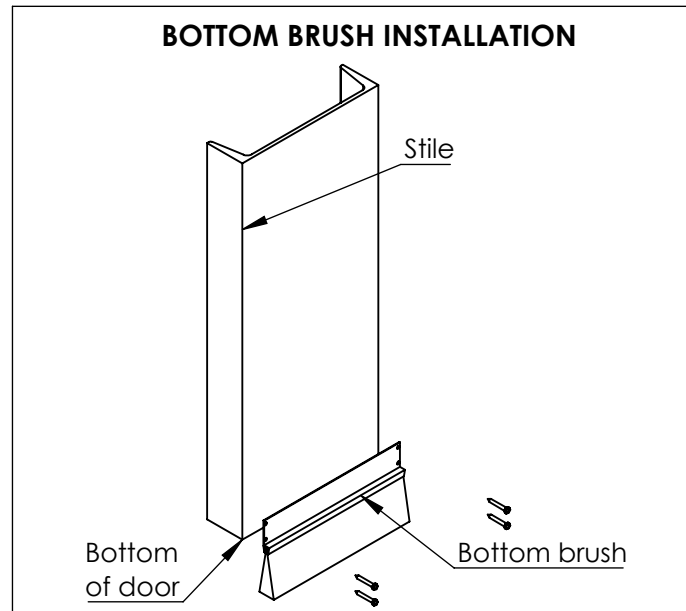
DESIGN DWG: KHALIL S.
CHECKED:
MFG DWG:
MFG APPR:
Q.A:
PERMIT:
APPROVAL DATE:
REVISION: A
REVISION DATE:
Last Saved: 7/7/2025

Project :Harnett Air
Location :497 Airport Rd. Erwin, NC 28339
Customer :Robert Ostendorf
Title :Details 2
Project No:25020

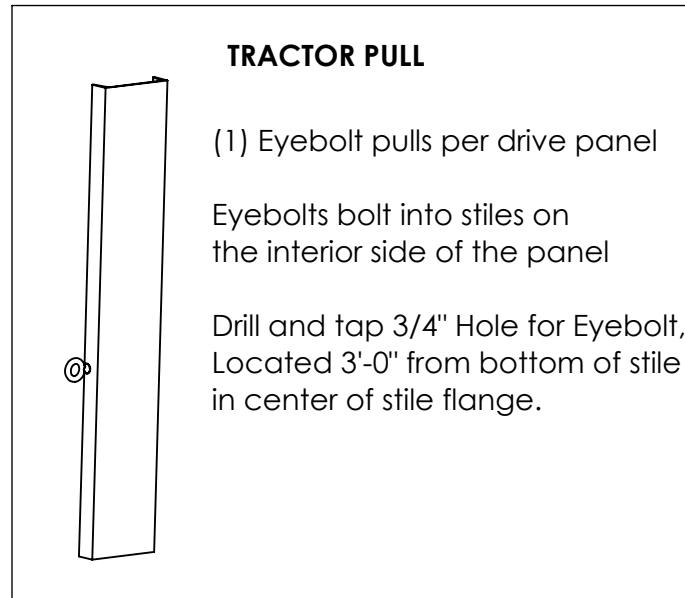
DWG. NO.
S- 10



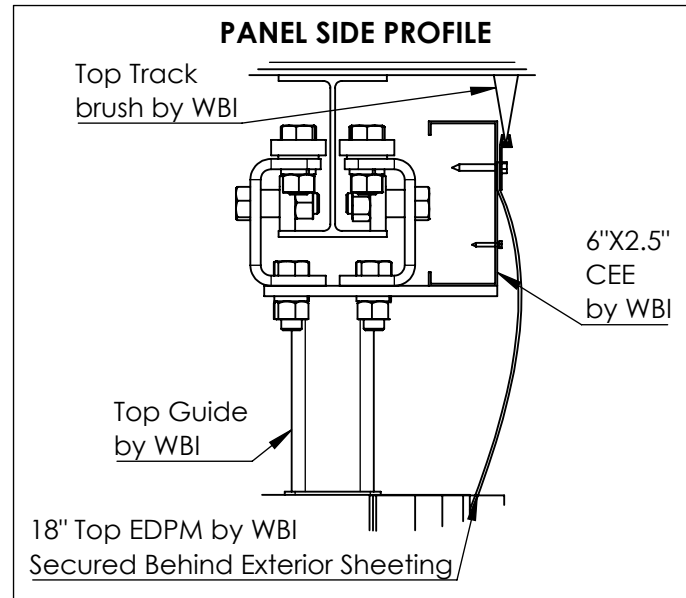
DETAIL 15



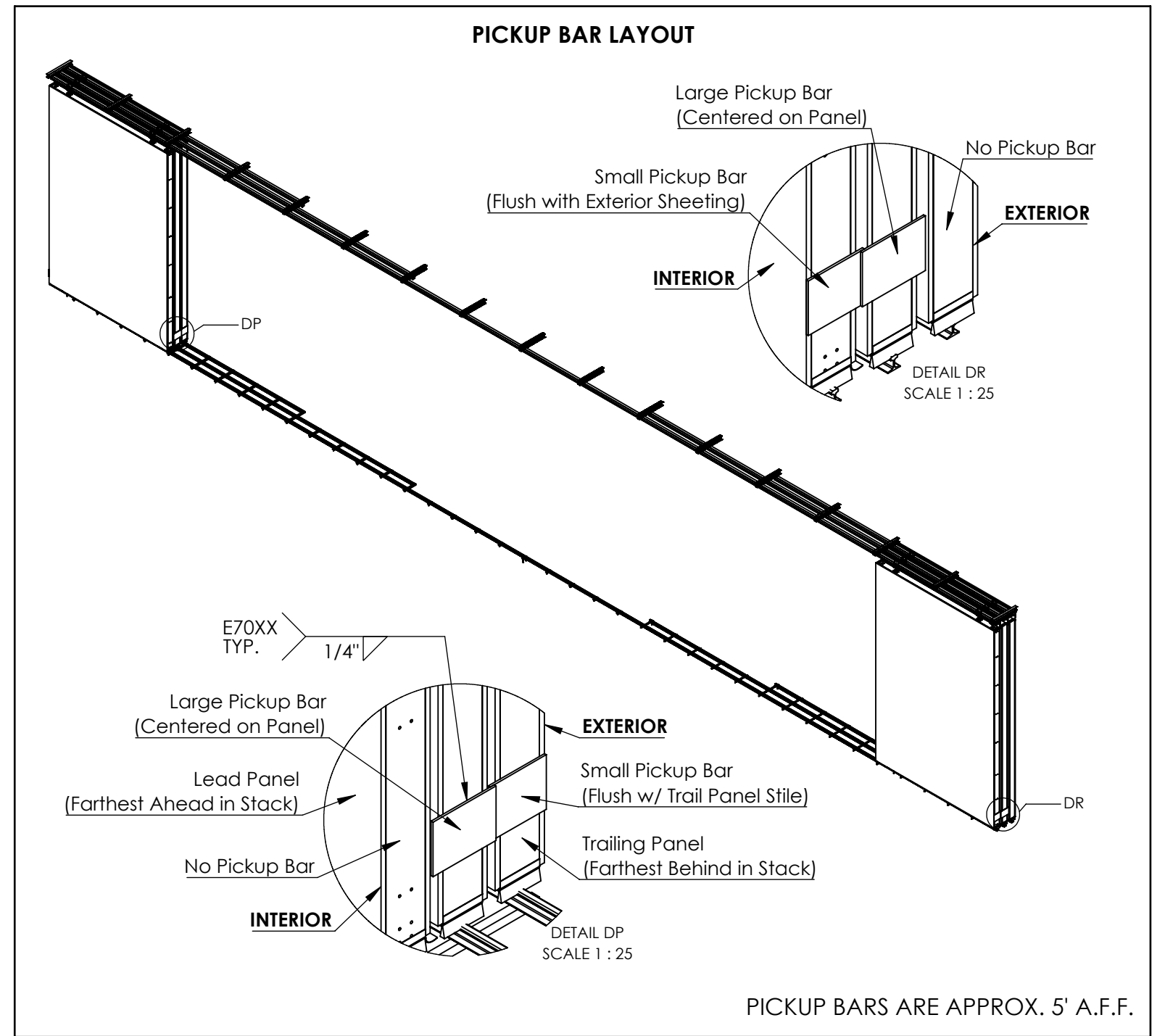
DETAIL 16



DETAIL 17



DETAIL 18



DETAIL 19



Well Bilt Industries USA, LLC.
 Address: 3001 SW 67th Ave
 Ocala, FL 34474
 Phone: (352) 528-5566

PROPRIETARY AND CONFIDENTIAL
 THE INFORMATION CONTAINED IN THIS DRAWING IS THE SOLE PROPERTY OF WBI. ANY REPRODUCTION IN PART OR AS A WHOLE WITHOUT THE WRITTEN PERMISSION OF WBI IS PROHIBITED.

P.E Approval:

Client Signature:

DESIGN DWG: KHALIL S.
 CHECKED:
 MFG DWG:
 MFG. APPR:
 Q.A:
 PERMIT:
 APPROVAL DATE:
 REVISION: A
 REVISION DATE:
 Last Saved: 7/7/2025

Project :Harnett Air

Location :497 Airport Rd. Erwin, NC 28339

Customer :Robert Ostendorf

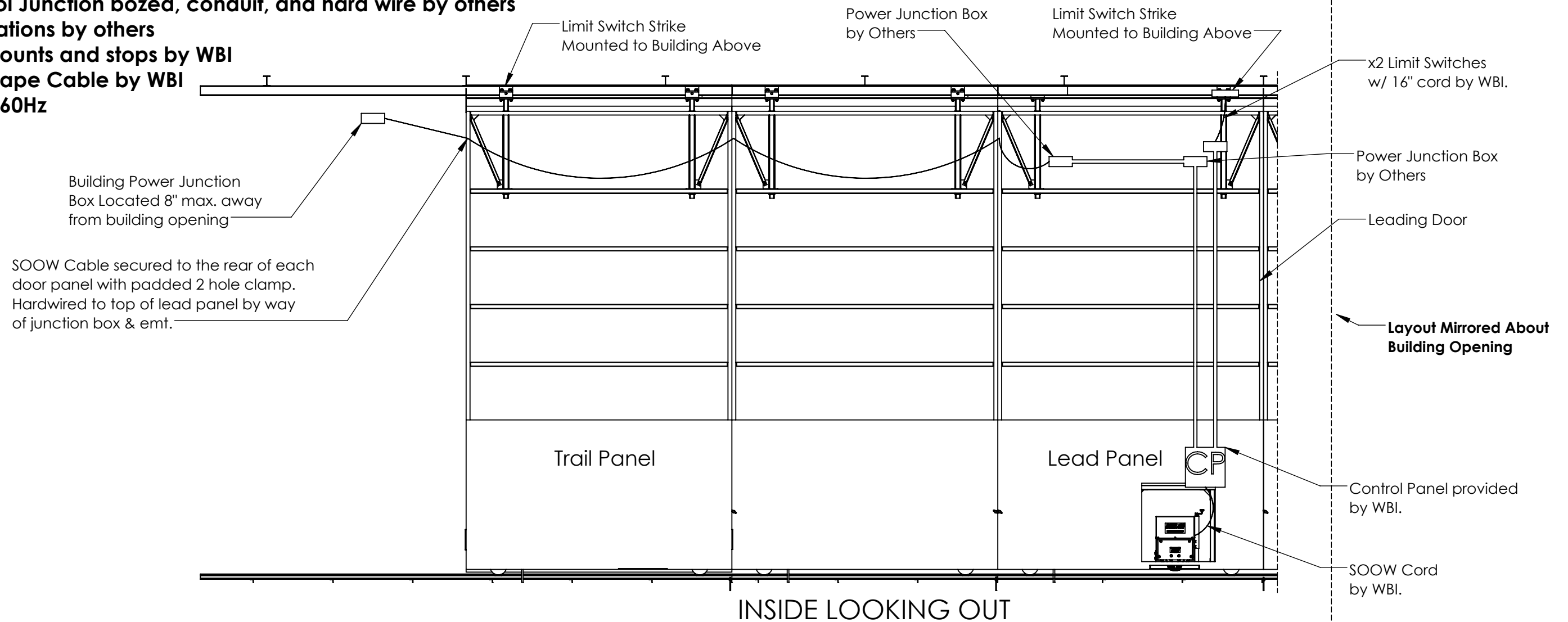
Title :Details 3

Project No:25020

DWG. NO. S-11

Power & Control Junction bozed, conduit, and hard wire by others

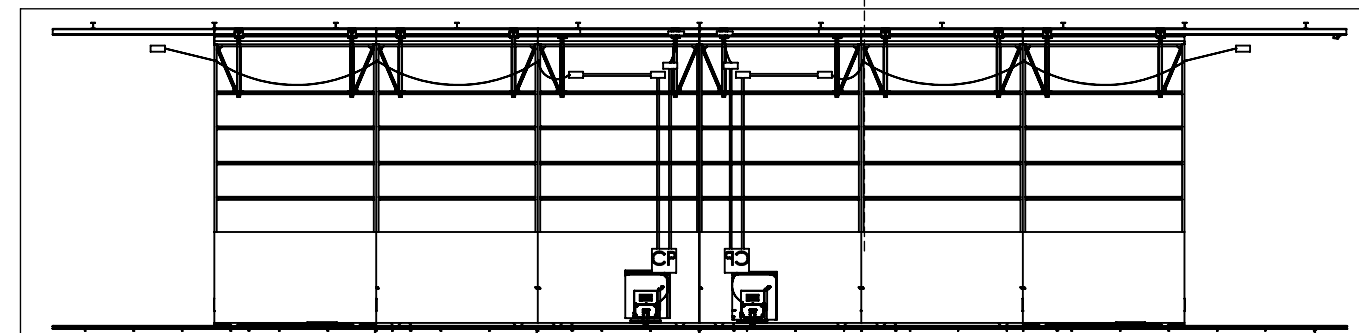
- Wiring/terminations by others
- Limit switch mounts and stops by WBI
- 12/4 Power Drape Cable by WBI
- 208V 1 Phase 60Hz



INSIDE LOOKING OUT

Note: **All Locations are shown for clarity only.** Locations are approximate only, WBI takes no responsibility for the electrical locations in any way. Consult with your Wellbilt Salesperson to discuss with our design team panel location approval.

Electrical design details must be precisely followed. Any unauthorized alterations, modifications, or adjustments to electrical details by others is strictly prohibited. Alterations of electrical design details or installation of electrical components that do not meet the criteria outline herein, without prior written consent from Well Bilt Industries USA, LLC, may result in voiding of warranties, safety hazards, non-compliance with regulatory standards, and increased costs. Well Bilt Industries USA, LLC is not responsible for any issues, damage, or safety concerns arising from unauthorized modifications to our electrical components or design details.



SYSTEM MIRRORED ON OPPOSITE SIDE



Well Bilt Industries USA, LLC.
Address: 3001 SW 67th Ave
Ocala, FL 34474
Phone: (352) 528-5566

PROPRIETARY AND CONFIDENTIAL

THE INFORMATION CONTAINED IN THIS DRAWING IS THE SOLE PROPERTY OF WBI. ANY REPRODUCTION IN PART OR AS A WHOLE WITHOUT THE WRITTEN PERMISSION OF WBI IS PROHIBITED.

P.E Approval:

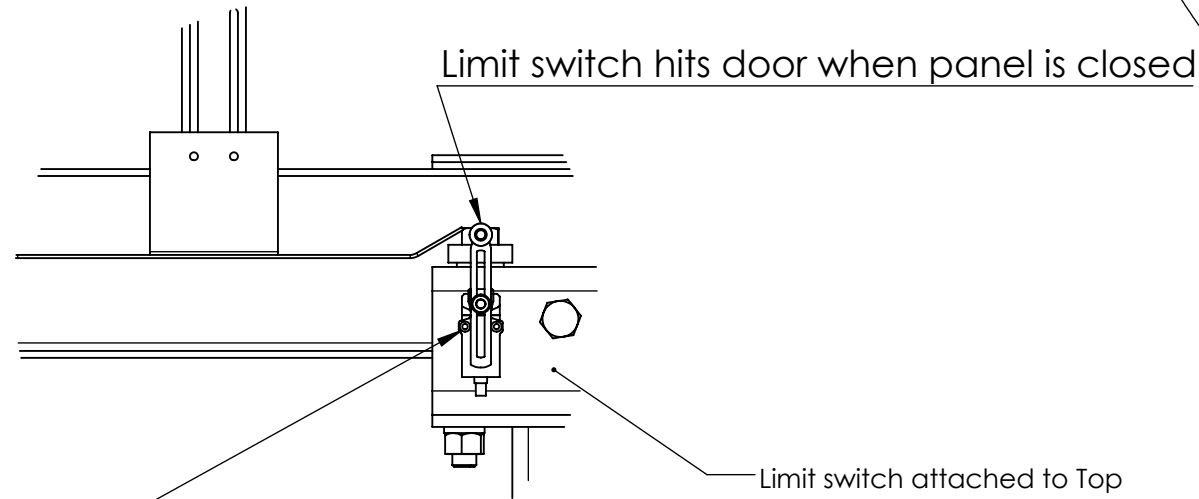
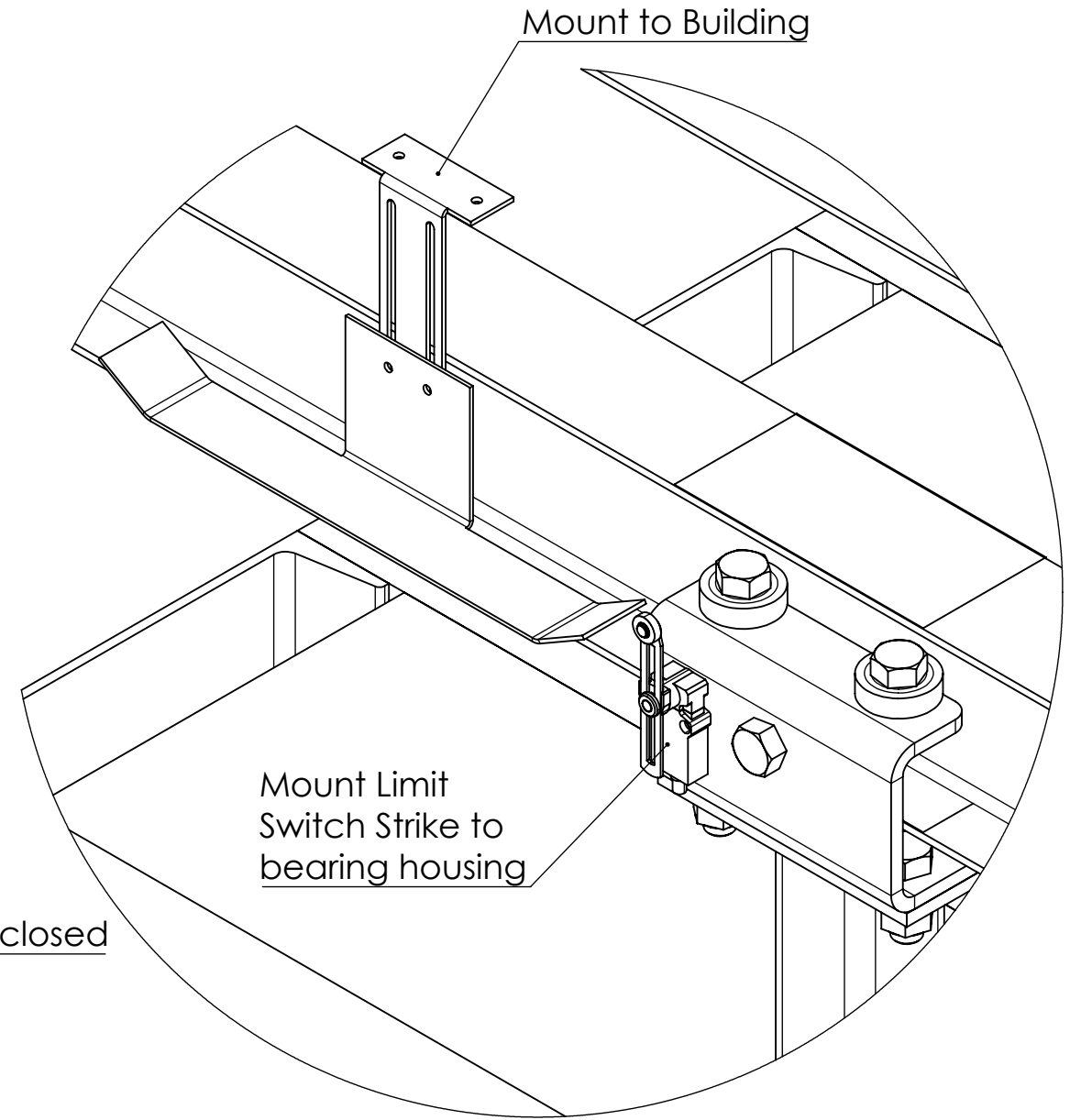
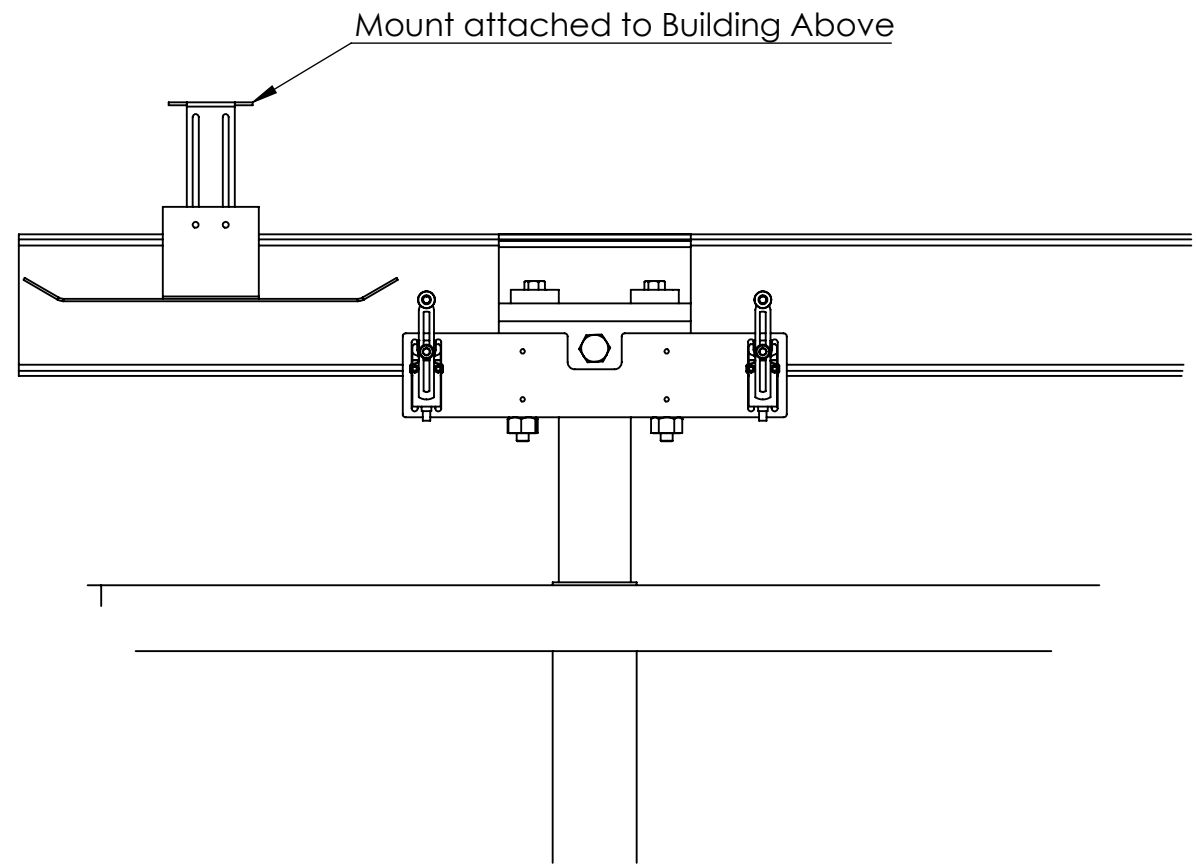
Client Signature:

DESIGN DWG: KHALIL S.
CHECKED:
MFG DWG:
MFG. APPR:
Q.A:
PERMIT:
APPROVAL DATE:
REVISION: A
REVISION DATE:
Last Saved: 7/7/2025

Project :Harnett Air
Location :497 Airport Rd. Erwin, NC 28339
Customer :Robert Ostendorf
Title :Electrical Details 1

Project No:25020

DWG. NO.
S- 12



Limit switch with wire (16" whip) attached with #10-32 machine screws/nuts by WBI.

Note: Limit switch setup for closed door not shown

WELLBILT

HANGAR DOORS

Well Bilt Industries USA, LLC.
 Address: 3001 SW 67th Ave
 Ocala, FL 34474
 Phone: (352) 528-5566

PROPRIETARY AND CONFIDENTIAL
 THE INFORMATION CONTAINED IN THIS DRAWING IS THE SOLE PROPERTY OF WBI. ANY REPRODUCTION IN PART OR AS A WHOLE WITHOUT THE WRITTEN PERMISSION OF WBI IS PROHIBITED.

P.E Approval:

Client Signature:

DESIGN DWG: KHALIL S.
 CHECKED:
 MFG DWG:
 MFG APPR:
 Q.A:
 PERMIT:
 APPROVAL DATE:
 REVISION: A
 REVISION DATE:
 Last Saved: 7/7/2025

Project :Harnett Air
 Location :497 Airport Rd. Erwin, NC 28339
 Customer :Robert Ostendorf
 Title :Electrical Details 2
 Project No:25020
 DWG. NO. S- 13