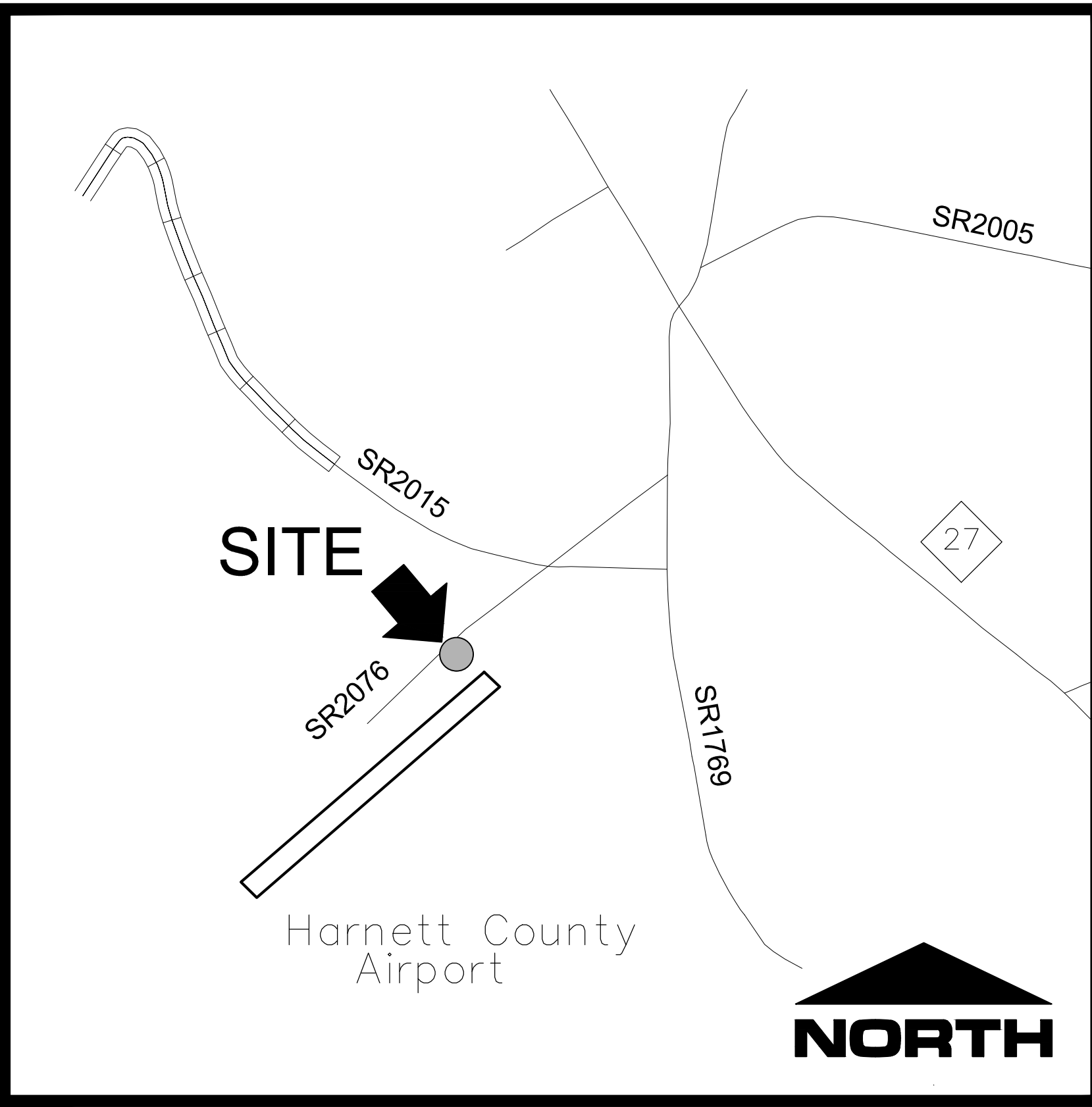


AIRPORT ROAD HANGAR II SITE DEVELOPMENT PLANS



**VICINITY MAP
 NOT TO SCALE**

EXISTING UTILITY OWNER

WATER

HARNETT REGIONAL WATER
 700 McKinney Parkway
 Lillington, North Carolina 27546
 910-893-7575
 Contact: Tommy Burns



Know what's below.
 Call before you dig.

HRW UTILITIES CONSTRUCTION WILL NEED TO BE
 COORDINATED AND INSPECTED BY HRW CONSTRUCTION
 INSPECTOR CHAD EVERETT/BRANDON WEST

CIVIL ENGINEER
 4D SITE SOLUTIONS, INC.
 409 Chicago Drive - Suite 112
 Fayetteville, North Carolina 28306
 910-426-6777
 Contact: Scott Brown, PE
 email: sbrown@4dsitesolutions.com

OWNER/DEVELOPER
 BRIAN RAYNOR
 2031 Middle Road
 Fayetteville, North Carolina 27312
 910-824-1238
 Contact: Brian Raynor
 email: braynor@highlandpaving.com

SURVEYOR
 REGIONAL LAND SURVEYORS, INC
 8642 West Market Street, Suite 100
 Greensboro, North Carolina 27409
 910-336-665-8155
 Contact: David Clark, PLS
 email: aclark@regionallandsurveyors.com

INDEX OF DRAWINGS

- G1.0 - PROJECT NOTES
- C1.0 - EXISTING CONDITIONS
- C2.0 - SITE PLAN
- C3.0 - GRADING AND EROSION CONTROL PLAN
- C4.0 - UTILITY PLAN
- C5.0 - SITE & EC DETAILS
- C5.1 - WATER DETAILS

NEILL'S CREEK TOWNSHIP
 NEAR ERWIN, NORTH CAROLINA
 HARNETT COUNTY

AIRPORT ROAD - SR 2076
 70' PUBLIC ROW

REVISIONS

PROJECT NAME

**AIRPORT
 ROAD
 HANGAR II**

PIN: 0579-82-7353.000
 AIRPORT ROAD
 NEILL'S CREEK TOWNSHIP
 NEAR ERWIN
 HARNETT COUNTY
 NORTH CAROLINA

CLIENT

BRIAN RAYNOR

2031 Middle Road
 Fayetteville, NC 28312
 Phone: (910) 824-1238
 Fax: (910) 678-9988

PROJECT INFORMATION

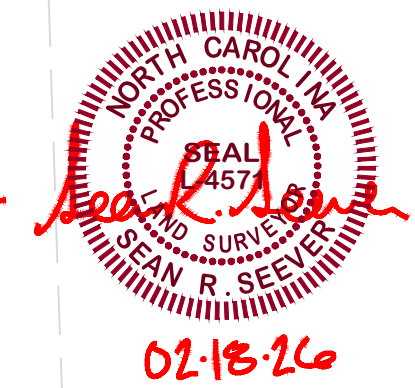
DESIGNED BY:	SCOTT
DRAWN BY:	SCOTT
CHECKED BY:	CHRIS
PROJECT NUMBER:	1942

DRAWING SCALE

SEE SHEETS

DATE RELEASED

FEBRUARY 18, 2026



THE CONTRACTOR MUST CONTACT NORTH CAROLINA ONE CALL CENTER AT 1-800-632-4949 A MINIMUM OF 72 HOURS PRIOR TO DIGGING IN ORDER TO HAVE THE EXISTING UTILITIES LOCATED



02-18-26

REVISIONS

PROJECT NAME

AIRPORT ROAD HANGAR II

PROJECT NOTES

CLIENT

BRIAN RAYNOR

PROJECT INFORMATION

DESIGNED BY:	SCOTT
DRAWN BY:	SCOTT
CHECKED BY:	CHRIS
PROJECT NUMBER:	1942

DRAWING SCALE

SEE SHEETS

DATE RELEASED

FEBRUARY 18, 2026

SHEET NUMBER

G-1.0

2022 HRW REQUIRED UTILITY NOTES
(REVISION 10- APRIL 19, 2022)
THE FOLLOWING UTILITY NOTES SHOULD BE ADDED TO THE COVERSHEET OF UTILITY PLANS FOR PROJECTS LOCATED IN HARNETT COUNTY:

WATER

A. THE FIRE MARSHAL'S OFFICE SHALL APPROVE ALL HYDRANT TYPES AND LOCATIONS IN NEW SUBDIVISIONS. HOWEVER, HARNETT REGIONAL WATER (HRW) PREFERENCES THE CONTRACTORS TO INSTALL ONE OF THE FOLLOWING FIRE HYDRANTS:

- MUELLER - SUPER CENTURION 250 A-423 MODEL WITH A 5/4" MAIN VALVE OPENING THREE (3) HOSE NOZZLES AND ONE PUMPER NOZZLE;
- AMERICAN DARLING - MARK B-84-B MODEL WITH A 5/4" MAIN VALVE OPENING THREE (3) HOSE NOZZLES AND ONE PUMPER NOZZLE;
- WATEROUS - PACER B-67-250 MODEL WITH A 5/4" MAIN VALVE OPENING THREE (3) HOSE NOZZLES AND ONE PUMPER NOZZLE OR APPROVED EQUAL FOR STANDARDIZATION.

*ALL FIRE HYDRANTS LISTED ABOVE MUST HAVE "AMERICAN NATIONAL FIRE HOSE CONNECTION SCREW THREADS" NST/NH HOSE THREADS.

B. FIRE HYDRANTS ARE INSTALLED AT CERTAIN ELEVATIONS, ANY GRADE CHANGE NEAR ANY FIRE HYDRANT, WHICH IMPEDES ITS OPERATION, SHALL BECOME THE RESPONSIBILITY OF THE UTILITY CONTRACTOR FOR CORRECTION. CORRECTIONS WILL BE MONITORED BY THE HRW UTILITY CONSTRUCTION INSPECTOR AND THE HARNETT COUNTY FIRE MARSHAL.

C. THE PROFESSIONAL ENGINEER (PE) SHALL OBTAIN AND PROVIDE THE NCDCEQ "AUTHORIZATION TO CONSTRUCT" PERMIT TO THE UTILITY CONTRACTOR BEFORE THE CONSTRUCTION OF THE WATER LINE SHALL BEGIN. THE UTILITY CONTRACTOR MUST POST A COPY OF THE NCDCEQ "AUTHORIZATION TO CONSTRUCT" PERMIT ISSUED BY THE NORTH CAROLINA DEPARTMENT OF ENVIRONMENTAL QUALITY (NCDCEQ) ON SITE PRIOR TO THE START OF CONSTRUCTION. THE PERMIT MUST BE MAINTAINED ON SITE THROUGHOUT THE ENTIRE CONSTRUCTION PROCESS OF THE PROPOSED WATER LINES THAT WILL SERVE THIS PROJECT.

D. THE UTILITY CONTRACTOR SHALL NOTIFY HARNETT REGIONAL WATER (HRW) AND THE PROFESSIONAL ENGINEER (PE) AT LEAST TWO DAYS PRIOR TO CONSTRUCTION COMMENCING. THE UTILITY CONTRACTOR MUST SCHEDULE A PRE-CONSTRUCTION CONFERENCE WITH MR. CHAD EVERETTE, HRW UTILITY CONSTRUCTION INSPECTOR AT LEAST TWO (2) DAYS BEFORE CONSTRUCTION WILL BEGIN AND THE UTILITY CONTRACTOR MUST COORDINATE WITH HRW FOR REGULAR INSPECTION VISITATIONS AND ACCEPTANCE OF THE WATER SYSTEM(S). CONSTRUCTION WORK SHALL BE PERFORMED ONLY DURING THE NORMAL WORKING HOURS OF HRW WHICH IS 8:00 AM - 5:00 PM MONDAY THROUGH FRIDAY. HOLIDAY AND WEEKEND WORK IS NOT PERMITTED BY HRW.

E. THE PROFESSIONAL ENGINEER (PE) SHALL PROVIDE HRW AND THE UTILITY CONTRACTOR WITH A PERMIT TO CONSTRUCT MARKED "RELEASED FOR CONSTRUCTION" AT LEAST TWO DAYS PRIOR TO CONSTRUCTION COMMENCING. THE REGISTERED LAND SURVEYOR (RLS) SHOULD STAKE OUT ALL LOT CORNERS AND THE GRADE STAKES FOR THE PROPOSED FINISH GRADE FOR EACH STREET BEFORE THE UTILITY CONTRACTOR BEGINS CONSTRUCTION OF THE WATER LINE(S). THE GRADE STAKES SHOULD BE SET WITH A CONSISTENT OFFSET FROM THE STREET CENTERLINE SO AS NOT TO INTERFERE WITH THE STREET GRADING AND UTILITY CONSTRUCTION.

F. THE UTILITY CONTRACTOR SHALL PROVIDE THE HRW UTILITY CONSTRUCTION INSPECTOR WITH MATERIAL SUBMITTALS AND SHOP DRAWINGS FOR ALL PROJECT MATERIALS PRIOR TO THE CONSTRUCTION OF ANY WATER LINE EXTENSION(S), AND ASSOCIATED WATER SERVICES IN HARNETT COUNTY. THE UTILITY CONTRACTOR SHALL PROVIDE THE UTILITY CONTRACTOR WITH THE ESTABLISHED SPECIFICATIONS OF HRW AND BE APPROVED BY THE ENGINEER OF RECORD PRIOR TO CONSTRUCTION. ALL SUBSTANDARD MATERIALS OR MATERIALS NOT APPROVED FOR USE IN HARNETT COUNTY FOUND ON THE PROJECT SITE MUST BE REMOVED IMMEDIATELY WHEN NOTIFIED BY THE HRW UTILITY CONSTRUCTION INSPECTOR.

G. THE WATER MAIN(S), FIRE HYDRANTS, SERVICE LINES, METER SETTERS AND ALL ASSOCIATED APPURTENANCES SHALL BE CONSTRUCTED IN STRICT ACCORDANCE WITH THE STANDARD SPECIFICATIONS OF THE HARNETT REGIONAL WATER (HRW). THE UTILITY CONTRACTOR SHALL BE RESPONSIBLE TO LOCATE THE NEWLY INSTALLED WATER MAIN(S), WATER SERVICE LINES AND ALL ASSOCIATED METER SETTERS AND METER BOXES FOR OTHER UTILITY COMPANIES AND THEIR CONTRACTORS UNTIL THE NEW WATER MAIN(S) HAVE BEEN APPROVED BY THE NORTH CAROLINA DEPARTMENT OF ENVIRONMENTAL QUALITY, DIVISION OF ENVIRONMENTAL HEALTH, PUBLIC WATER SUPPLY SECTION (NCDCEQ, DEH, PWS) AND ACCEPTED BY HRW.

H. PRIOR TO ACCEPTANCE, ALL SERVICES WILL BE INSPECTED TO ENSURE THAT THEY ARE INSTALLED AT THE PROPER DEPTH. ALL METER BOXES MUST BE FLUSH WITH THE GROUND LEVEL AT FINISH GRADE AND THE METER SETTERS MUST BE A MINIMUM OF 8" BELOW THE METER BOX LID. METER SETTERS SHALL BE CENTERED IN THE METER BOX AND SUPPORTED BY BRICK, BLOCK OR STONE.

I. THE UTILITY CONTRACTOR SHALL PROVIDE THE PROFESSIONAL ENGINEER (PE) AND HRW UTILITY CONSTRUCTION INSPECTOR WITH A SET OF RED LINE DRAWINGS IDENTIFYING THE COMPLETE WATER SYSTEM FOR EACH PROJECT. THE RED LINE DRAWINGS SHOULD IDENTIFY THE MATERIALS, PIPE SIZES AND APPROXIMATE DEPTHS OF THE WATER LINES AS WELL AS THE GATE VALVES, FIRE HYDRANTS, METER SETTERS, BLOW OFF ASSEMBLIES AND ALL ASSOCIATED APPURTENANCES FOR ALL WATER LINE(S) CONSTRUCTED IN HARNETT COUNTY. THE RED LINE DRAWINGS SHOULD CLEARLY IDENTIFY ANY DEVIATIONS FROM THE NCDCEQ APPROVED PLANS. ALL CHANGE ORDERS MUST BE APPROVED BY HRW AND THE PROFESSIONAL ENGINEER (PE) IN WRITING AND PROPERLY DOCUMENTED IN THE RED LINE FIELD DRAWINGS.

J. POTABLE WATER MAINS CROSSING OTHER UTILITIES AND NON-POTABLE WATER LINES (SANITARY SEWER, STORM SEWER, RCP, ETC.) SHALL BE LAID TO PROVIDE A MINIMUM VERTICAL DISTANCE OF TWENTY-FOUR (24) INCHES BETWEEN THE POTABLE WATER MAIN AND OTHER UTILITIES. NCDOT REQUIRES THE NEW WATER MAINS TO BE INSTALLED UNDER THE STORM WATER LINES. THE POTABLE WATER MAIN SHALL BE INSTALLED WITH TWENTY-FOUR (24") INCHES OF VERTICAL SEPARATION AND WITH DUCTILE IRON PIPE WHEN DESIGNED TO BE PLACED UNDER A NON- POTABLE WATER LINE SUCH AS SANITARY SEWER OR STORM SEWER LINES. IF THESE SEPARATIONS CANNOT BE MAINTAINED THEN THE WATER MAIN SHALL BE INSTALLED WITH DUCTILE IRON PIPE. BOTH THE POTABLE WATER MAIN AND THE NON- POTABLE WATER LINE MUST BE CAST IRON OR DUCTILE IRON PIPE (DIP) IF THE STATE MINIMUM SEPARATIONS CANNOT BE MAINTAINED. THE DUCTILE IRON PIPE MUST BE LAID SO THE MECHANICAL JOINTS ARE AT LEAST (10') FEET FROM THE POINT WHERE THE POTABLE WATER MAIN CROSSES THE NON-POTABLE WATER LINE.

K. POTABLE WATER MAINS INSTALLED PARALLEL TO NON-POTABLE WATER LINES (SANITARY SEWER, STORM SEWER, RCP, ETC.) SHALL BE LAID TO PROVIDE A MINIMUM HORIZONTAL DISTANCE OF TEN (10') FEET BETWEEN THE POTABLE WATER MAIN AND SANITARY SEWER MAINS, SEWER LATERALS AND SERVICES. THE HORIZONTAL SEPARATION BETWEEN THE POTABLE WATER MAIN AND ANY OTHER UTILITY OR STORM SEWER SHALL NOT BE LESS THAN FIVE (5') FEET. THE POTABLE WATER MAIN MUST BE DUCTILE IRON PIPE IF THIS HORIZONTAL SEPARATION OF TEN (10') FEET CANNOT BE MAINTAINED. THE DUCTILE IRON PIPE SHALL EXTEND AT LEAST TEN (10') FEET BEYOND THE POINT WHERE THE MINIMUM REQUIRED HORIZONTAL SEPARATION OF TEN (10') FEET CAN BE RE-ESTABLISHED.

L. METER SETTERS SHALL BE INSTALLED IN PAINS ON EVERY OTHER LOT LINE WHERE POSSIBLE LEAVE ADEQUATE SPACE FOR OTHER UTILITIES TO BE INSTALLED AT LATER TIME. THE METER SETTERS SHALL BE INSTALLED AT LEAST ONE (1') FOOT INSIDE THE RIGHT-OF-WAY AND AT LEAST THREE (3") TO FIVE (5') FEET FROM THE PROPERTY LINE BETWEEN THE LOTS.

M. HRW REQUIRES THAT METER BOXES FOR 3/4" SERVICES SHALL BE 12" WIDE X 17" LONG ABS PLASTIC BOXES AT LEAST 18" IN HEIGHT WITH CAST IRON LIDS/COVERS. METER BOXES FOR 1" SERVICES SHALL BE 17" WIDE X 21" LONG ABS PLASTIC BOXES AT LEAST 18" IN HEIGHT WITH PLASTIC LIDS AND CAST IRON FLIP COVERS IN THE CENTER OF THE LIDS. METER BOXES FOR 2" SERVICES SHALL BE 20" WIDE X 32" LONG ABS PLASTIC BOXES AT LEAST 20" IN HEIGHT WITH PLASTIC LIDS AND CAST IRON FLIP COVERS IN THE CENTER OF THE LIDS.

N. MASTER METERS MUST BE INSTALLED IN CONCRETE VAULTS SIZED FOR THE METER ASSEMBLY AND ASSOCIATED APPURTENANCES SO AS TO PROVIDE AT LEAST EIGHTEEN (18") INCHES OF CLEARANCE BETWEEN THE BOTTOM OF THE CONCRETE VAULT AND THE BOTTOM OF THE METER SETTER. THE MASTER METER MUST BE PROVIDED TEST PORTS IF THE METER IS NOT EQUIPPED WITH TEST PORTS FROM THE MANUFACTURER IN ACCORDANCE WITH THE HRW ESTABLISHED STANDARD SPECIFICATIONS AND DETAILS. DUCTILE IRON PIPE MUST BE USED FOR THE MASTER METER VAULT PIPING AND VALVE VAULT PIPING. THE UTILITY CONTRACTOR MUST PROVIDE SHOP DRAWINGS FOR THE METER VAULTS TO HRW PRIOR TO ORDERING THE CONCRETE VAULTS.

O. THE UTILITY CONTRACTOR WILL INSTALL POLYETHYLENE SDR-9 WATER SERVICE LINES THAT CROSS UNDER THE PAVEMENT INSIDE A SCHEDULE 40 PVC CONDUIT TO ALLOW FOR REMOVAL AND REPLACEMENT IN THE FUTURE. TWO (2) INDEPENDENT 3/4" WATER SERVICE LINES MAY BE INSTALLED INSIDE ONE (1) - TWO (2") INCH SCHEDULE 40 PVC CONDUIT OR TWO (2) INDEPENDENT 1" WATER SERVICE LINES MAY BE INSTALLED INSIDE ONE

(1) - THREE (3") INCH SCHEDULE 40 PVC CONDUIT, BUT EACH WATER SERVICE SHALL BE TAPPED DIRECTLY TO THE WATER MAIN. SPLIT SERVICES ARE NOT ALLOWED BY HRW. IF

SIDEWALKS ARE PROPOSED, THE CONDUIT MUST EXTEND PAST THE SIDEWALK.

P. THE WATER MAIN(S), FIRE HYDRANTS, GATE VALVES, SERVICE LINES, METER SETTERS AND ASSOCIATED APPURTENANCES MUST BE RATED FOR 200 PSI AND HYDROSTATICALLY PRESSURE TESTED TO 200 PSI. THE HYDROSTATIC PRESSURE TEST(S) MUST BE WITNESSED BY THE HRW UTILITY CONSTRUCTION INSPECTOR. THE UTILITY CONTRACTOR MUST NOTIFY HRW WHEN THEY ARE READY TO BEGIN FILLING IN LINES AND COORDINATE WITH HARNETT REGIONAL WATER TO WITNESS ALL PRESSURE TESTING.

Q. THE UTILITY CONTRACTOR SHALL CONDUCT A PNEUMATIC PRESSURE TEST USING COMPRESSED AIR OR OTHER INERT GAS ON THE STAINLESS STEEL TAPPING SLEEVE(S) PRIOR TO MAKING THE TAP ON THE EXISTING WATER MAIN. THIS PNEUMATIC PRESSURE TEST MUST BE WITNESSED BY THE HRW UTILITY CONSTRUCTION INSPECTOR. THE UTILITY CONTRACTOR SHALL USE ROMAC-BRAND STAINLESS STEEL TAPPING SLEEVE(S) OR APPROVED EQUAL FOR ALL TAPS MADE IN HARNETT COUNTY. ALL NEW WATER LINE EXTENSIONS MUST BEGIN WITH A RESILIENT WEDGE TYPE GATE VALVE SIZED EQUAL TO THE DIAMETER OF THE NEW WATER LINE EXTENSION IN ORDER TO PROVIDE A MEANS OF ISOLATION BETWEEN HARNETT REGIONAL WATER'S EXISTING WATER MAINS AND THE NEW WATER LINE EXTENSIONS UNDER CONSTRUCTION.

R. ALL WATER MAINS WILL BE CONSTRUCTED WITH SDR-21 PVC PIPE OR CLASS 50 DUCTILE IRON PIPE RATED FOR AT LEAST 200 PSI OR GREATER. ALL PIPES MUST BE PROTECTED DURING LOADING, TRANSPORT, UNLOADING, STAGING, AND INSTALLATION. PVC PIPE MUST BE PROTECTED FROM EXTENDED EXPOSURE TO SUNLIGHT PRIOR TO INSTALLATION.

S. ALL WATER MAINS WILL BE FLUSHED AND DISINFECTED IN STRICT ACCORDANCE WITH THE STANDARD SPECIFICATIONS OF THE HARNETT REGIONAL WATER. ALL WATER SAMPLES COLLECTED FOR BACTERIA TESTING WILL BE COLLECTED BY THE HRW UTILITY CONSTRUCTION INSPECTOR AND TESTED IN THE HRW LABORATORY.

T. ALL FITTINGS LARGER THAN TWO (2") INCHES DIAMETER SHALL BE DUCTILE IRON. HRW REQUIRES THAT MECHANICAL JOINTS BE ASSEMBLED WITH GRIP RINGS AS "MEGALUG" FITTINGS ARE NOT APPROVED BY HARNETT REGIONAL WATER FOR PIPE SIZES SMALLER THAN TWELVE (12") DIAMETER. PVC PIPE USED FOR WATER MAINS SHALL BE CONNECTED BY SLIP JOINT OR MECHANICAL JOINT WITH GRIP RINGS. GLUED JOINT JOINTS ARE NOT ALLOWED ON PVC PIPE USED FOR WATER MAINS IN HARNETT COUNTY.

U. HRW REQUIRES THAT THE UTILITY CONTRACTOR INSTALL TRACER WIRE IN THE TRENCH WITH ALL WATER LINES. THE TRACER WIRE SHALL BE 12 GA. INSULATED, SOLID COPPER CONDUIT AND IT SHALL BE TERMINATED AT THE VALVE BOXES OR MANHOLES. NO SPLICED WIRE CONNECTIONS SHALL BE MADE UNDERGROUND ON TRACER WIRE INSTALLED IN HARNETT COUNTY. THE TRACER WIRE MAY BE SECURED WITH DUCT TAPE TO THE TOP OF THE PIPE BEFORE BACKFILLING.

V. THE UTILITY CONTRACTOR WILL PROVIDE PROFESSIONAL ENGINEER (PE) AND THE HRW UTILITY CONSTRUCTION INSPECTOR WITH A SET OF RED LINE FIELD DRAWINGS TO IDENTIFY THE INSTALLED LOCATIONS OF THE WATER LINE(S) AND ALL ASSOCIATED SERVICES. ALL CHANGE ORDERS MUST BE PRE-APPROVED BY HRW AND THE PROFESSIONAL ENGINEER (PE) IN WRITING AND PROPERLY DOCUMENTED IN THE RED LINE FIELD DRAWINGS.

W. THE UTILITY CONTRACTOR SHALL SPOT DIG TO EXPOSE EACH UTILITY PIPE OR LINE WHICH MAY CONFLICT WITH CONSTRUCTION OF PROPOSED WATER LINE EXTENSIONS WELL IN ADVANCE TO VERIFY LOCATIONS OF THE EXISTING UTILITIES. THE UTILITY CONTRACTOR SHALL PROVIDE BOTH HORIZONTAL AND VERTICAL CLEARANCES TO THE PROFESSIONAL ENGINEER (PE) TO ALLOW THE PE TO ADJUST THE WATER LINE DESIGN IN ORDER TO AVOID CONFLICTS WITH EXISTING UNDERGROUND UTILITIES. THE UTILITY CONTRACTOR SHALL COORDINATE WITH THE UTILITY OWNER AND BE RESPONSIBLE FOR TEMPORARY RELOCATION AND/OR SECURING EXISTING UTILITY POLES, PIPES, WIRES, CABLES, SIGNS AND/OR UTILITIES INCLUDING SERVICES IN ACCORDANCE WITH THE UTILITY OWNER REQUIREMENTS DURING WATER LINE INSTALLATION, GRADING AND STREET CONSTRUCTION.

X. PRIOR TO THE COMMENCEMENT OF ANY WORK WITHIN ESTABLISHED UTILITY EASEMENTS OR NCDOT RIGHT-OF-WAYS THE UTILITY CONTRACTOR IS REQUIRED TO HAVE A SIGNED NCDOT ENCROACHMENT AGREEMENT POSTED ON SITE AND NOTIFY ALL CONCERNED UTILITY COMPANIES IN ACCORDANCE WITH G.S. 87-102. THE UTILITY CONTRACTOR MUST CALL THE NC ONE CALL CENTER AT 811 OR (800) 632-4949 TO VERIFY THE LOCATION OF EXISTING UTILITIES PRIOR TO THE BEGINNING OF CONSTRUCTION. EXISTING UTILITIES SHOWN IN THESE PLANS ARE TAKEN FROM MAPS FURNISHED TO THE UTILITY CONTRACTOR BY THE UTILITY COMPANIES AND HAVE NOT BEEN PHYSICALLY LOCATED OR VERIFIED BY THE P.E. (I.E. TELEPHONE, CABLE, WATER, SEWER, ELECTRICAL POWER, FIBER OPTIC, NATURAL GAS, ETC.). THE UTILITY CONTRACTOR WILL BE RESPONSIBLE TO REPAIR ANY AND ALL DAMAGES TO THE SATISFACTION OF THE RELATED UTILITY COMPANY.

Y. THE UTILITY CONTRACTOR SHALL PROVIDE HRW WITH AT LEAST ONE (1) FIRE HYDRANT WRENCH AND ONE (1) BREAK-AWAY FLANGE KIT FOR EVERY SUBDIVISION WITH FIRE HYDRANTS DEVELOPED IN HARNETT COUNTY. THESE ITEMS MUST BE PROVIDED TO HRW BEFORE THE FINAL INSPECTION WILL BE SCHEDULED BY THE HRW UTILITY CONSTRUCTION INSPECTOR. IN ADDITION, THE UTILITY CONTRACTOR SHALL INSTALL A 4" X 4" CONCRETE VALVE MARKER AT THE EDGE OF THE RIGHT-OF-WAY TO IDENTIFY THE LOCATION OF EACH GATE VALVE INSTALLED IN THE NEW WATER MAINS. THE UTILITY CONTRACTOR SHALL MEASURE THE DISTANCE FROM THE CENTER OF THE CONCRETE MARKER TO THE CENTER OF THE VALVE BOX. THIS DISTANCE (IN LINEAR FEET) SHALL BE STAMPED ON THE BRASS PLATE LOCATED ON THE TOP OF THE CONCRETE VALVE MARKER. IN LIEU OF INSTALLING THE CONCRETE VALVE MARKERS, THE UTILITY CONTRACTOR MAY PROVIDE AT LEAST TWO MEASUREMENTS FROM TWO INDEPENDENT PERMANENT ABOVE GROUND STRUCTURES TO THE PROFESSIONAL ENGINEER (PE) IN THE RED LINE DRAWINGS TO IDENTIFY THE VALVE LOCATIONS. THE PROFESSIONAL ENGINEER (PE) MUST INCLUDE THESE MEASUREMENTS IN THE AS-BUILT RECORD DRAWINGS SUBMITTED TO HRW.

Z. THE UTILITY CONTRACTOR WILL BE RESPONSIBLE FOR ANY AND ALL REPAIRS DUE TO LEAKAGE DAMAGE FROM POOR WORKMANSHIP DURING THE ONE

(1) YEAR WARRANTY PERIOD ONCE THE WATER SYSTEM IMPROVEMENTS HAVE BEEN ACCEPTED BY HARNETT REGIONAL WATER. HARNETT REGIONAL WATER WILL PROVIDE MAINTENANCE AND REPAIRS WHEN REQUESTED AND BILL THE DEVELOPER AND/OR UTILITY CONTRACTOR IF NECESSARY DUE TO LACK OF RESPONSE WITHIN 48 HOURS OF NOTIFICATION OF WARRANTY WORK. THE UTILITY CONTRACTOR WILL BE RESPONSIBLE FOR ANY AND ALL REPAIRS DUE TO DAMAGES RESULTING FROM FAILURE TO LOCATE THE NEW WATER LINES AND ASSOCIATED APPURTENANCES FOR OTHER UTILITIES AND THE CONTRACTORS UNTIL THE WATER LINES HAVE BEEN APPROVED BY NCDCEQ AND ACCEPTED BY HRW. THE FINAL INSPECTION OF WATER SYSTEM IMPROVEMENTS CANNOT BE SCHEDULED WITH HRW UNTIL THE STREETS HAVE BEEN PAVED; THE RIGHTS-OF-WAY AND UTILITY EASEMENTS HAVE BEEN SEEDED AND STABILIZED WITH AN ADEQUATE STAND OF GRASS IN PLACE TO PREVENT EROSION ISSUES ON SITE.

AA. THE ENGINEER OF RECORD IS RESPONSIBLE TO ENSURE THAT CONSTRUCTION IS, AT ALL TIMES, IN COMPLIANCE WITH ACCEPTED SANITARY ENGINEERING PRACTICES AND APPROVED PLANS AND SPECIFICATIONS. NO FIELD CHANGES TO THE APPROVED PLANS ARE ALLOWED WITHOUT PRIOR WRITTEN APPROVAL BY HRW. A COPY OF EACH ENGINEER'S FIELD REPORT IS TO BE SUBMITTED TO HRW AS EACH SUCH INSPECTION IS MADE ON SYSTEM IMPROVEMENTS OR TESTING IS PERFORMED BY THE CONTRACTOR. WATER AND SEWER INFRASTRUCTURE MUST PASS ALL TESTS REQUIRED BY HRW SPECIFICATIONS AND THOSE OF ALL APPLICABLE REGULATORY AGENCIES. THESE TESTS INCLUDE, BUT ARE NOT LIMITED TO: AIR TEST, VACUUM TEST, MANDREL TEST, VISUAL TEST, PRESSURE TEST, BACTERIOLOGICAL TEST, ETC. A HRW INSPECTOR MUST BE PRESENT DURING TESTING AND ALL TEST RESULTS SHALL BE SUBMITTED TO HRW. ALL TESTS MUST BE SATISFIED BEFORE THE FINAL INSPECTION WILL BE SCHEDULED WITH THE HRW INSPECTOR. THE ENGINEER OF RECORD MUST REQUEST IN WRITING TO SCHEDULE THE FINAL INSPECTION ONCE ALL CONSTRUCTION IS COMPLETE. THE DEVELOPER'S ENGINEER OF RECORD AND THE HRW UTILITY CONSTRUCTION INSPECTOR SHALL PREPARE A WRITTEN PUNCH LIST OF ANY DEFECTS OR DEFICIENCIES NOTED DURING THE FINAL INSPECTION, SHOULD ANY EXIST. UPON COMPLETION OF THE PUNCH LIST, THE DEVELOPER'S ENGINEER OF RECORD WILL SCHEDULE ANOTHER INSPECTION. IN THE EVENT THE NUMBER OF INSPECTIONS PERFORMED BY THE HRW EXCEEDS TWO, ADDITIONAL FEES MAY BE ASSESSED TO THE DEVELOPER.

SANITARY SEWER

A. THE PROFESSIONAL ENGINEER (PE) SHALL OBTAIN AND SUPPLY A COPY OF THE SEWER PERMIT FOR CONSTRUCTION AND OPERATION OF THE WASTEWATER COLLECTION SYSTEM TO THE UTILITY CONTRACTOR BEFORE THE CONSTRUCTION OF THE SANITARY SEWER LINE, SEWER LIFT STATION AND ASSOCIATED FORCE MAIN SHALL BEGIN. THE UTILITY CONTRACTOR MUST POST A COPY OF THE SEWER PERMIT ISSUED BY THE NORTH CAROLINA DEPARTMENT OF ENVIRONMENTAL QUALITY (NCDCEQ) ON SITE PRIOR TO THE START OF CONSTRUCTION. THE PERMIT MUST BE MAINTAINED ON SITE DURING THE CONSTRUCTION OF THE SEWER SYSTEM IMPROVEMENTS.

B. THE UTILITY CONTRACTOR SHALL NOTIFY HARNETT REGIONAL WATER (HRW) AND THE PROFESSIONAL ENGINEER (PE) AT LEAST TWO DAYS PRIOR TO CONSTRUCTION COMMENCING. THE UTILITY CONTRACTOR MUST SCHEDULE A PRE-CONSTRUCTION CONFERENCE WITH MR. CHAD EVERETTE, HRW UTILITY CONSTRUCTION INSPECTOR AT LEAST TWO (2) DAYS BEFORE

CONSTRUCTION WILL BEGIN AND THE UTILITY CONTRACTOR MUST COORDINATE WITH HRW FOR REGULAR INSPECTION VISITATIONS AND ACCEPTANCE OF THE WASTEWATER SYSTEM(S). CONSTRUCTION WORK SHALL BE PERFORMED ONLY DURING THE NORMAL WORKING HOURS OF HRW WHICH IS 8:00 AM - 5:00 PM MONDAY THROUGH FRIDAY. HOLIDAY AND WEEKEND WORK IS NOT PERMITTED BY HRW.

C. THE PROFESSIONAL ENGINEER (PE) SHALL PROVIDE HRW WITH A SET OF NCDCEQ APPROVED PLANS MARKED "RELEASED FOR CONSTRUCTION" AT LEAST TWO DAYS PRIOR TO CONSTRUCTION COMMENCING. HRW WILL STAMP THE APPROVED PLANS AS "RELEASED FOR CONSTRUCTION" AND PROVIDE COPIES TO THE UTILITY CONTRACTOR. THE REGISTERED LAND SURVEYOR (RLS) SHALL STAKE OUT ALL LOT CORNERS AND ESTABLISH GRADE STAKES FOR THE PROPOSED FINISH GRADE FOR EACH STREET AND SEWER LINE BEFORE THE UTILITY CONTRACTOR BEGINS CONSTRUCTION OR INSTALLATION OF THE MANHOLES, SANITARY SEWER GRAVITY LINE(S), SEWER LIFT STATIONS AND/OR SANITARY SEWER FORCE MAIN(S). THE GRADE STAKES SHOULD BE SET WITH A CONSISTENT OFFSET FROM THE STREET CENTERLINE SO AS NOT TO INTERFERE WITH THE STREET GRADING OR UTILITY CONSTRUCTION.

D. THE UTILITY CONTRACTOR SHALL PROVIDE THE HRW UTILITY CONSTRUCTION INSPECTOR WITH MATERIAL SUBMITTALS AND SHOP DRAWINGS FOR ALL PROJECT MATERIALS PRIOR TO THE CONSTRUCTION OF ANY SANITARY SEWER LINE(S), MANHOLE(S), SEWER LIFT STATION(S) AND ASSOCIATED FORCE MAIN(S) IN HARNETT COUNTY. THE MATERIALS TO BE USED ON THE PROJECT MUST MEET THE ESTABLISHED SPECIFICATIONS OF HRW AND BE APPROVED BY THE ENGINEER OF RECORD PRIOR TO CONSTRUCTION. ALL SUBSTANDARD MATERIALS OR MATERIALS NOT APPROVED FOR USE IN HARNETT COUNTY FOUND ON THE PROJECT SITE MUST BE REMOVED IMMEDIATELY WHEN NOTIFIED BY THE HRW UTILITY CONSTRUCTION INSPECTOR.

E. THE SANITARY SEWER LATERAL CONNECTIONS SHOULD BE INSTALLED 90° (PERPENDICULAR) TO THE SANITARY SEWER GRAVITY LINES WITH SCHEDULE 40 PVC PIPE. HRW REQUIRES THE UTILITY CONTRACTOR TO PROVIDE THE PROFESSIONAL ENGINEER (PE) WITH ACCURATE MEASUREMENTS FOR LOCATING SANITARY SEWER SERVICE LATERAL AND ASSOCIATED EACH SANITARY SEWER CLEAN-OUT. MEASUREMENTS SHOULD BE TAKEN FROM THE NEAREST DOWNSTREAM MANHOLE UP ALONG THE SANITARY SEWER MAIN TO THE IN-LINE WYE FITTING (OR TAPPING SADDLE) AND THEN ANOTHER MEASUREMENT FROM THE IN-LINE WYE FITTING (OR TAPPING SADDLE) TO THE 4" X 4" LONG SWEEP COMBINATION WYE FITTING AT THE BOTTOM OF THE SEWER CLEAN-OUT STACK. THESE FIELD MEASUREMENTS MUST BE PROVIDED TO THE PROFESSIONAL ENGINEER (PE) IN THE RED LINE DRAWINGS FROM THE UTILITY CONTRACTOR FOR PROPER DOCUMENTATION IN THE AS-BUILT RECORD DRAWINGS SUBMITTED TO HRW.

F. THE UTILITY CONTRACTOR SHALL BE RESPONSIBLE TO LOCATE THE NEWLY INSTALLED SANITARY SEWER GRAVITY LINE(S), SANITARY SEWER FORCE MAIN(S), SANITARY SEWER SERVICE LATERAL(S) AND ALL ASSOCIATED SEWER CLEAN-OUT(S) IN THE PROPOSED SANITARY SEWER SYSTEM FOR OTHER UTILITY UTILITY COMPANIES AND THEIR CONTRACTORS UNTIL THE NEW SANITARY SEWER LINE(S) AND ASSOCIATED APPURTENANCES HAVE BEEN APPROVED BY THE NORTH CAROLINA DEPARTMENT OF ENVIRONMENTAL QUALITY (NCDCEQ) AND ACCEPTED BY HRW. ALL NEW SANITARY SEWER LINES MUST HAVE AT LEAST THREE (3 FT.) FEET OF COVER AND EXTEND UNDER ALL EXISTING WATER MAIN AND STORM WATER MAINS WITH A LEAST 24" OF VERTICAL CLEARANCE BELOW THE BOTTOM OF THE EXISTING WATER MAIN AND STORM WATER LINES. ALL DUCTILE IRON SEWER PIPING MUST BE 401 EPOXY COATED OR APPROVED EQUAL.

G. THE SANITARY SEWER GRAVITY LINE(S), MANHOLE(S), SANITARY SEWER SERVICE LATERAL(S) AND ASSOCIATED CLEAN-OUT(S) SHALL BE CONSTRUCTED IN STRICT ACCORDANCE WITH THE STANDARD SPECIFICATIONS OF THE HARNETT REGIONAL WATER. THE SANITARY SEWER GRAVITY LINE(S) MUST PNEUMATICALLY PRESSURE TESTED WITH COMPRESSED AIR AT 5 PSI AND THE SANITARY SEWER CLEAN-OUT MUST BE MEASURED AND TESTED WITH WATER OR AIR AT 200 PSI. SANITARY SEWER MANHOLES MUST BE VACUUM TESTED TO 10 INCHES OF MERCURY AND CANNOT DROP BELOW 9 INCHES IN 60 SECONDS FOR 4 FT. DIAMETER MANHOLES, 75 SECONDS FOR 5 FT. DIAMETER MANHOLES. THE TEST MUST BE IN ACCORDANCE WITH THE FOLLOWING STANDARDS: FOR DUCTILE IRON PIPELINES TEST IN ACCORDANCE WITH THE APPLICABLE REQUIREMENTS OF ASTM C1244. LONG SWEEP COMBINATION WYE TO BE AT LEAST TWO (2) FEET ABOVE THE FINISH GRADE AND COVER EACH END WITH A FOUR (4") INCH TEMPORARY CAP TO KEEP OUT DIRT, SAND, ROCKS, WATER AND CONSTRUCTION DEBRIS. THE VERTICAL STACK ON EACH CLEAN-OUT MUST BE PROVIDED WITH A CONCRETE DONUT FOR PROTECTION.

I. ONCE THE SANITARY SEWER GRAVITY LINE(S) HAVE BEEN INSTALLED, PNEUMATICALLY PRESSURE TESTED AND IN PLACE FOR AT LEAST 30 DAYS, THE UTILITY CONTRACTOR MUST CONTACT THE HRW UTILITY CONSTRUCTION INSPECTOR TO WITNESS THE MANDREL TEST ON EACH PVC SANITARY SEWER GRAVITY LINE. THE UTILITY CONTRACTOR WILL NOTIFY HRW TO SCHEDULE THE MANDREL TESTING. THE MANDREL AND PROVING RING MUST BE SUPPLIED BY THE UTILITY CONTRACTOR. CLOSED CIRCUIT VIDEO CAMERA INSPECTIONS (AT THE UTILITY CONTRACTOR'S EXPENSE) MAY BE REQUIRED BY THE HRW UTILITY CONSTRUCTION INSPECTOR IF THE MANDREL AND MIRROR TAMPING TESTING CANNOT BE COMPLETED WITH SATISFACTORY RESULTS. THE SANITARY SEWER LINES SHOULD BE FLUSHED CLEAN USING A SEWER BALL OF THE PROPER DIAMETER BEFORE ANY MANDREL TESTING CAN BE PERFORMED. THE UTILITY CONTRACTOR IS RESPONSIBLE TO REMOVE ALL DIRT, SAND, SILT, GRAVEL, MUD AND DEBRIS FROM THE NEWLY CONSTRUCTED SEWER LINES EXERCISING CARE TO KEEP THE HARNETT REGIONAL WATER'S EXISTING SANITARY SEWER SYSTEMS CLEAN. SANITARY SEWER FORCE MAIN(S) SHALL BE PRESSURE TESTED TO 200 PSI FOR AT LEAST 2 HOURS LIKE WATER LINES.

J. THE UTILITY CONTRACTOR SHALL BE RESPONSIBLE TO LOCATE THE NEWLY INSTALLED SANITARY SEWER SYSTEM(S) FOR OTHER UTILITY COMPANIES AND THEIR CONTRACTORS UNTIL THE NEW SANITARY SEWER SYSTEM(S) HAVE BEEN APPROVED BY THE NORTH CAROLINA DEPARTMENT OF ENVIRONMENTAL QUALITY (NCDCEQ) AND ACCEPTED BY HRW.

K. HRW REQUIRES THAT THE UTILITY CONTRACTOR INSTALL TRACER WIRE IN THE TRENCH WITH ALL SANITARY SEWER FORCE MAINS. THE TRACER WIRE SHALL BE 12 GA. INSULATED, SOLID COPPER CONDUCTOR AND IT SHALL BE TERMINATED AT THE TOP OF THE VALVE BOXES OR MANHOLES. NO SPLICED WIRE CONNECTIONS SHALL BE MADE UNDERGROUND ON TRACER WIRE INSTALLED IN HARNETT COUNTY. THE TRACER WIRE MAY BE SECURED WITH DUCT TAPE TO THE TOP OF THE PIPE BEFORE BACKFILLING. THE TRACER WIRE IS NOT REQUIRED FOR THE GRAVITY SEWER LINE(S) BETWEEN MANHOLES.

L. THE UTILITY CONTRACTOR SHALL PROVIDE THE PROFESSIONAL ENGINEER (PE) AND HRW UTILITY CONSTRUCTION INSPECTOR WITH A SET OF RED LINE DRAWINGS IDENTIFYING THE COMPLETE SEWER SYSTEM INSTALLED FOR EACH PROJECT. THE RED LINE DRAWINGS SHOULD IDENTIFY THE MATERIALS, PIPE SIZES AND APPROXIMATE DEPTHS OF THE SEWER LINES AS WELL AS THE INSTALLED LOCATIONS OF THE MANHOLE(S), SANITARY SEWER GRAVITY LINE(S), SANITARY SEWER SERVICE LATERALS, CLEAN-OUTS, SEWER LIFT STATION(S) AND ASSOCIATED FORCE MAIN(S). THE RED LINE DRAWINGS SHOULD CLEARLY IDENTIFY ANY DEVIATIONS FROM THE NCDCEQ APPROVED PLANS. ALL CHANGE ORDERS MUST BE APPROVED BY HRW AND THE PROFESSIONAL ENGINEER (PE) IN WRITING AND PROPERLY DOCUMENTED IN THE RED LINE FIELD DRAWINGS.

M. PRIOR TO THE COMMENCEMENT OF ANY WORK WITHIN ESTABLISHED UTILITY EASEMENTS OR NCDOT RIGHT-OF-WAYS THE UTILITY CONTRACTOR IS REQUIRED TO NOTIFY ALL CONCERNED UTILITY COMPANIES IN ACCORDANCE WITH G.S. 87-102. THE UTILITY CONTRACTOR MUST CALL THE NC ONE CALL CENTER AT 811 OR (800) 632-4949 TO VERIFY THE LOCATION OF EXISTING UTILITIES PRIOR TO THE BEGINNING OF CONSTRUCTION. EXISTING UTILITIES SHOWN IN THESE PLANS ARE TAKEN FROM MAPS FURNISHED BY VARIOUS UTILITY COMPANIES AND HAVE NOT BEEN PHYSICALLY LOCATED BY THE P.E. (I.E. TELEPHONE, CABLE, WATER, SEWER, ELECTRICAL POWER, FIBER OPTIC, NATURAL GAS, ETC.).

N. THE UTILITY CONTRACTOR SHALL SPOT DIG TO EXPOSE EACH EXISTING UTILITY PIPE OR LINE WHICH MAY CONFLICT WITH CONSTRUCTION OF PROPOSED SANITARY SEWER LINE EXTENSIONS WELL IN ADVANCE TO VERIFY LOCATIONS OF THE EXISTING UTILITIES. THE UTILITY CONTRACTOR SHALL PROVIDE BOTH HORIZONTAL AND VERTICAL CLEARANCES TO THE PROFESSIONAL ENGINEER (PE) TO ALLOW THE PE TO ADJUST THE SANITARY SEWER LINE DESIGN IN ORDER TO AVOID CONFLICTS WITH EXISTING UNDERGROUND UTILITIES. THE UTILITY CONTRACTOR SHALL COORDINATE WITH THE UTILITY OWNER AND BE RESPONSIBLE FOR TEMPORARY RELOCATION OF EXISTING UTILITIES AND/OR SECURING EXISTING UTILITY POLES, PIPES, WIRES, CABLES, SIGNS AND/OR UTILITIES INCLUDING SERVICES IN ACCORDANCE WITH THE UTILITY OWNER'S REQUIREMENTS DURING SANITARY SEWER LINE INSTALLATION, GRADING AND STREET CONSTRUCTION.

O. WHEN MAKING A TAP ON AN EXISTING SEWER FORCE MAIN, THE UTILITY CONTRACTOR MUST HAVE A PERMIT FROM THE NORTH CAROLINA DEPARTMENT OF ENVIRONMENTAL QUALITY (NCDCEQ) PRIOR TO BEGIN THE TAP WORK. THE UTILITY CONTRACTOR SHALL CONDUCT A

PNEUMATIC PRESSURE TEST USING COMPRESSED AIR OR OTHER INERT GAS ON THE STAINLESS STEEL TAPPING SLEEVE AND GATE VALVE PRIOR TO MAKING THE TAP ON AN EXISTING SANITARY SEWER FORCE MAIN. THIS PNEUMATIC PRESSURE TEST MUST BE WITNESSED BY THE HRW UTILITY CONSTRUCTION INSPECTOR. THE UTILITY CONTRACTOR SHALL USE ROMAC-BRAND STAINLESS STEEL TAPPING SLEEVE(S) OR APPROVED EQUAL FOR ALL TAPS MADE ON SANITARY SEWER FORCE MAINS IN HARNETT COUNTY. THE UTILITY CONTRACTOR SHALL USE ROMAC-BRAND STAINLESS STEEL TAPPING SLEEVE(S) OR APPROVED EQUAL FOR ALL TAPS MADE ON EXISTING SANITARY SEWER GRAVITY LINES IN HARNETT COUNTY.

P. THE UTILITY CONTRACTOR SHALL PROVIDE A GREASE TRAP FOR EACH SANITARY SEWER SERVICE LATERAL THAT WILL BE CONNECTED TO A RESTAURANT, FOOD PROCESSING FACILITY AND ANY OTHER COMMERCIAL OR INDUSTRIAL FACILITY AS REQUIRED BY THE HARNETT COUNTY FAT, OIL & GREASE ORDINANCE. THE GREASE TRAP MUST BE RATED FOR A MINIMUM CAPACITY OF AT LEAST 1,000 GALLONS UNLESS OTHERWISE APPROVED IN WRITING BY THE HRW PRE-TREATMENT COORDINATOR. GARBAGE DISPOSALS SHOULD NOT BE INSTALLED IN HOMES AND BUSINESSES THAT DISCHARGE WASTEWATER TO THE HARNETT REGIONAL WATER'S SANITARY SEWER SYSTEM AS THEY ARE NOT APPROVED BY HRW.

Q. EACH SEWER LIFT STATION MUST BE PROVIDED WITH THREE PHASE POWER (AT LEAST 480 VOLTS) AND CONSTRUCTED TO MEET THE MINIMUM REQUIREMENTS OF THE LATEST VERSION OF THE NATIONAL ELECTRICAL CODE (NEC) AND HARNETT REGIONAL WATER STANDARD SPECIFICATIONS AND DETAILS. IF THREE PHASE POWER IS NOT AVAILABLE FROM THE POWER COMPANY OTHER ARRANGEMENTS MUST BE APPROVED BY HRW ENGINEERING PRIOR TO THE START OF CONSTRUCTION.

R. WHERE A NEW SANITARY SEWER FORCE MAIN IS CONNECTED TO AN EXISTING MANHOLE IN THE HARNETT REGIONAL WATER SEWER COLLECTIONS SYSTEM, THE UTILITY CONTRACTOR MUST PROVIDE A PROTECTIVE COATING (EPOXY) FOR THE INTERIOR SURFACES OF THE MANHOLE TO PROTECT IT AGAINST CORROSION, EROSION AND DETERIORATION FROM THE RELEASE OF SEWER GASES SUCH AS METHANE AND HYDROGEN SULFIDE.

S. THE SEWER LIFT STATION DESIGN AND ASSOCIATED EQUIPMENT MUST MEET OR EXCEED THE MINIMUM REQUIREMENTS FOR HARNETT COUNTY SEWER LIFT STATIONS. EACH SANITARY SEWER LIFT STATION MUST BE CONSTRUCTED WITH AN ALL-WEATHER ACCESS ROAD THAT IS AT LEAST 20 FEET WIDE. THE LIFT STATION SITE MUST BE COVERED WITH WEED BLOCKING MATERIAL AND AT LEAST SIX (6") INCHES OF ABC STONE (CRUSH AND RUN).

T. ONCE A SEWER LIFT STATION HAS BEEN INSTALLED, THE UTILITY CONTRACTOR IS RESPONSIBLE TO SCHEDULE A DRAW DOWN TEST WITH HRW ENGINEERING AND COLLECTIONS STAFF, THE PROFESSIONAL ENGINEER (PE), THE ELECTRICIAN, THE ORIGINAL EQUIPMENT MANUFACTURERS (OEM) REPRESENTATIVES [FOR BOTH THE PUMPS AND THE GENERATOR]. THIS DRAW DOWN TEST MUST BE COMPLETED WITH POWER SUPPLIED FROM THE ELECTRICAL UTILITY COMPANY WITH POWER SUPPLIED BY THE EMERGENCY GENERATOR WITH SATISFACTORY RESULTS BEFORE FINAL INSPECTIONS ARE CONDUCTED BY THE HRW UTILITY CONSTRUCTION INSPECTOR.

U. ONCE THE UTILITY CONTRACTOR COMPLETES THE INSTALLATION OF A SEWER LIFT STATION, THE PROFESSIONAL ENGINEER (PE) MUST SUBMIT THE SEWER PERMIT CERTIFICATION AND AS-BUILT RECORD DRAWINGS TO THE NORTH CAROLINA DEPARTMENT OF ENVIRONMENTAL QUALITY (NCDCEQ) AND HRW FOR FINAL APPROVAL. THE UTILITY CONTRACTOR MUST SUPPLY HRW ENGINEERING STAFF WITH THREE ORIGINAL OPERATION & MAINTENANCE (O&M) MANUALS ALONG WITH THE ASSOCIATED PUMP CURVES AND ELECTRICAL SCHEMATICS FOR THE ASSOCIATED SEWER LIFT STATION EQUIPMENT INCLUDING ALL WARRANTY INFORMATION AND DOCUMENTATION.

V. ONCE THE UTILITY CONTRACTOR COMPLETES THE INSTALLATION OF A SEWER LIFT STATION, THE DEVELOPER MUST PAY HRW THE ESTABLISHED SYSTEM CONTROL AND DATA ACQUISITION (SCADA) FEES BEFORE THE SCADA SYSTEM WILL BE INSTALLED AT THE NEW SEWER LIFT STATION. THE SCADA SYSTEM MUST BE INSTALLED AND OPERATIONAL BEFORE THE UTILITIES MAY BE ACCEPTED BY HRW AND PLACED INTO OPERATION.

W. HRW REQUIRES THE UTILITY CONTRACTOR TO PROVIDE ALL NECESSARY EQUIPMENT AND DEVICES FOR THE TESTING AND INSPECTION OF THE SANITARY SEWER SYSTEM. THE EQUIPMENT AND DEVICES MAY INCLUDE BUT NOT LIMITED TO LAMPING WITH MIRRORS, MANDRELS, SEWER BALLS, PLUGS, AIR COMPRESSORS AND ASSOCIATED COMPRESSED AIR LINES. IF THE HRW UTILITY CONSTRUCTION INSPECTOR DEEM THAT A CLOSED CIRCUIT VIDEO CAMERA INSPECTION OF THE NEWLY CONSTRUCTED SEWER SYSTEM IS NECESSARY, THEN ALL COSTS FOR THE CLOSED CIRCUIT CAMERA INSPECTION WILL BE THE RESPONSIBILITY OF THE UTILITY CONTRACTOR. ALL CLOSED CIRCUIT VIDEO CAMERA INSPECTIONS MUST BE RECORDED ON VHS TAPE. THE VHS WILL BE RELEASED TO HRW FOR RECORD KEEPING, REVIEW AND APPROVAL OF THE SEWER SYSTEM.

X. ANY USE OF SEWER PLUGS TO TEMPORARILY BLOCK HARNETT REGIONAL WATER'S EXISTING SANITARY SEWER LINES MUST BE COORDINATED WITH THE HRW COLLECTIONS SUPERVISOR AT LEAST TWO (2) DAYS IN ADVANCE OF INSTALLING THE PLUGS. THE SEWER PLUGS MUST BE REMOVED AS SOON AS POSSIBLE ONCE THE NEW SANITARY SEWER LINES HAVE BEEN INSPECTED, PRESSURE TESTED, MANDREL TESTED, APPROVED BY THE NORTH CAROLINA DEPARTMENT OF ENVIRONMENTAL QUALITY (NCDCEQ) AND ACCEPTED BY HRW TO ALLOW THE SEWER TO FLOW AS DESIGNED IN HARNETT REGIONAL WATER'S EXISTING SANITARY SEWER LINES OR WHEN SO ORDERED BY THE HRW COLLECTIONS SUPERVISOR TO LIMIT INTERRUPTIONS TO THE NORMAL FLOW OF THE SANITARY SEWER COLLECTION SYSTEM(S). THE UTILITY CONTRACTOR MUST PROVIDE THE PUMPS HOSES AND NECESSARY CONNECTORS FOR A TEMPORARY PUMP AROUND SETUP IF REQUIRED BY THE HRW COLLECTIONS SUPERVISOR. MR. RANDOLPH CLEGG, HRW COLLECTIONS SUPERVISOR MAY BE CONTACTED BETWEEN 8:00 AM AND 5:00 PM MONDAY THROUGH FRIDAY AT (910) 893-7575

EXTENSION 3241.

Y. THE UTILITY CONTRACTOR WILL BE RESPONSIBLE FOR ANY AND ALL REPAIRS DUE TO LEAKAGE OR DAMAGE RESULTING FROM POOR WORKMANSHIP DURING THE ONE (1) YEAR WARRANTY PERIOD ONCE THE SEWER SYSTEM IMPROVEMENTS HAVE BEEN APPROVED BY THE NORTH CAROLINA DEPARTMENT OF ENVIRONMENTAL QUALITY (NCDCEQ) AND ACCEPTED BY HRW. THE UTILITY CONTRACTOR WILL BE RESPONSIBLE FOR ANY AND ALL REPAIRS DUE TO DAMAGES RESULTING FROM FAILURE TO LOCATE THE NEW SANITARY SEWER LINES AND ASSOCIATED APPURTENANCES FOR OTHER UTILITIES AND THEIR CONTRACTORS UNTIL THE SANITARY SEWER LINES HAVE BEEN APPROVED BY NCDCEQ AND ACCEPTED BY HRW. HRW WILL PROVIDE MAINTENANCE AND WARRANTY REPAIRS IF NECESSARY DUE TO LACK OF RESPONSE WITHIN 48 HOURS OF NOTIFICATION OF WARRANTY WORK. HRW WILL INVOICE THE DEVELOPER AND/OR UTILITY CONTRACTOR FOR MATERIALS AND LABOR IN SUCH CASES.

Z. IN DEVELOPMENTS AND PROJECTS THAT REQUIRE UTILITY EASEMENTS TO BE ESTABLISHED FOR FUTURE HRW RIGHT-OF-WAY, THE REGISTERED LAND SURVEYOR (RLS) MUST PROVIDE THE PROTECT-OF-WAY AGENT WITH AN OFFICIAL COPY OF THE RECORDED PLAT AND LEGAL DESCRIPTION OF THE SAID EASEMENTS AS REQUIRED WITH THE HARNETT COUNTY REGISTER OF DEEDS. THE RECORDED DOCUMENTS MUST BE PROVIDED TO THE HRW RIGHT-OF-WAY AGENT BEFORE THE UTILITY IMPROVEMENTS WITHIN THE SAID EASEMENT CAN BE PLACED INTO OPERATION. ANY AND ALL EASEMENTS THAT MUST BE OBTAINED FROM ADJOINING PROPERTY OWNERS MUST BE PROVIDED TO HRW BY THE DEVELOPER AT NO COST TO HARNETT COUNTY. THE FINAL INSPECTION OF ALL SANITARY SEWER SYSTEM IMPROVEMENTS CANNOT BE SCHEDULED WITH HRW UNTIL THE STREETS HAVE BEEN PAVED; THE RIGHTS-OF-WAY AND UTILITY EASEMENTS HAVE BEEN SEEDED AND STABILIZED WITH AN ADEQUATE STAND OF GRASS IN PLACE TO PREVENT EROSION ISSUES ON SITE.

AA. THE ENGINEER OF RECORD IS RESPONSIBLE TO ENSURE THAT CONSTRUCTION IS, AT ALL TIMES, IN COMPLIANCE WITH ACCEPTED SANITARY ENGINEERING PRACTICES AND APPROVED PLANS AND SPECIFICATIONS. NO FIELD CHANGES TO THE APPROVED PLANS ARE ALLOWED WITHOUT PRIOR WRITTEN APPROVAL BY HRW. A COPY OF EACH ENGINEER'S FIELD REPORT IS TO BE SUBMITTED TO HRW AS EACH SUCH INSPECTION IS MADE ON SYSTEM IMPROVEMENTS OR TESTING IS PERFORMED BY THE CONTRACTOR. WATER AND SEWER INFRASTRUCTURE MUST PASS ALL TESTS REQUIRED BY HRW SPECIFICATIONS AND THOSE OF ALL APPLICABLE REGULATORY AGENCIES. THESE TESTS INCLUDE, BUT ARE NOT LIMITED TO: AIR TEST, VACUUM TEST, MANDREL TEST, VISUAL TEST, PRESSURE TEST, BACTERIOLOGICAL TEST, ETC. A HRW INSPECTOR MUST BE PRESENT DURING TESTING AND ALL TEST RESULTS SHALL BE SUBMITTED TO HRW. ALL TESTS MUST BE SATISFIED BEFORE THE FINAL INSPECTION WILL BE SCHEDULED WITH THE HRW INSPECTOR. THE ENGINEER OF RECORD MUST REQUEST IN WRITING TO SCHEDULE THE FINAL INSPECTION ONCE ALL CONSTRUCTION IS COMPLETE. THE DEVELOPER'S ENGINEER OF RECORD AND THE HRW UTILITY CONSTRUCTION INSPECTOR SHALL PREPARE A WRITTEN PUNCH LIST OF ANY DEFECTS OR DEFICIENCIES NOTED DURING THE FINAL INSPECTION, SHOULD ANY EXIST. UPON COMPLETION OF THE PUNCH LIST, THE DEVELOPER'S ENGINEER OF RECORD WILL SCHEDULE ANOTHER INSPECTION. IN THE EVENT THE NUMBER OF INSPECTIONS PERFORMED BY THE HRW EXCEEDS TWO, ADDITIONAL FEES MAY BE ASSESSED TO THE DEVELOPER.



REVISIONS

PROJECT NAME

AIRPORT ROAD HANGAR II

EXISTING CONDITIONS

CLIENT

BRIAN RAYNOR

2031 Middle Road
 Fayetteville, NC 28312
 Phone: (910) 824-1238
 Fax: (910) 678-9988

PROJECT INFORMATION

DESIGNED BY:	SCOTT
DRAWN BY:	SCOTT
CHECKED BY:	CHRIS
PROJECT NUMBER:	1942

DRAWING SCALE

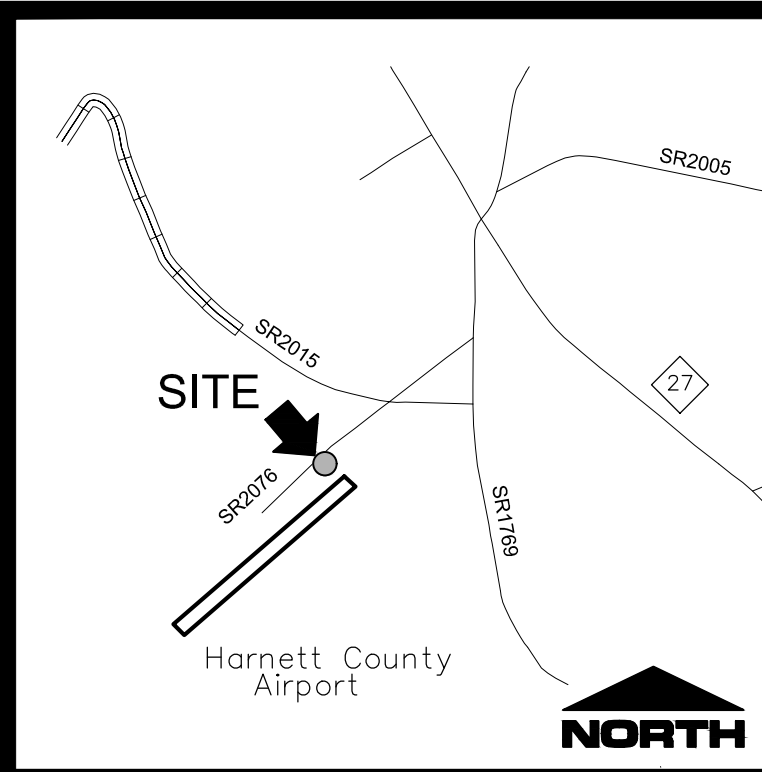
HORIZONTAL: 1"=20'

DATE RELEASED

FEBRUARY 18, 2026

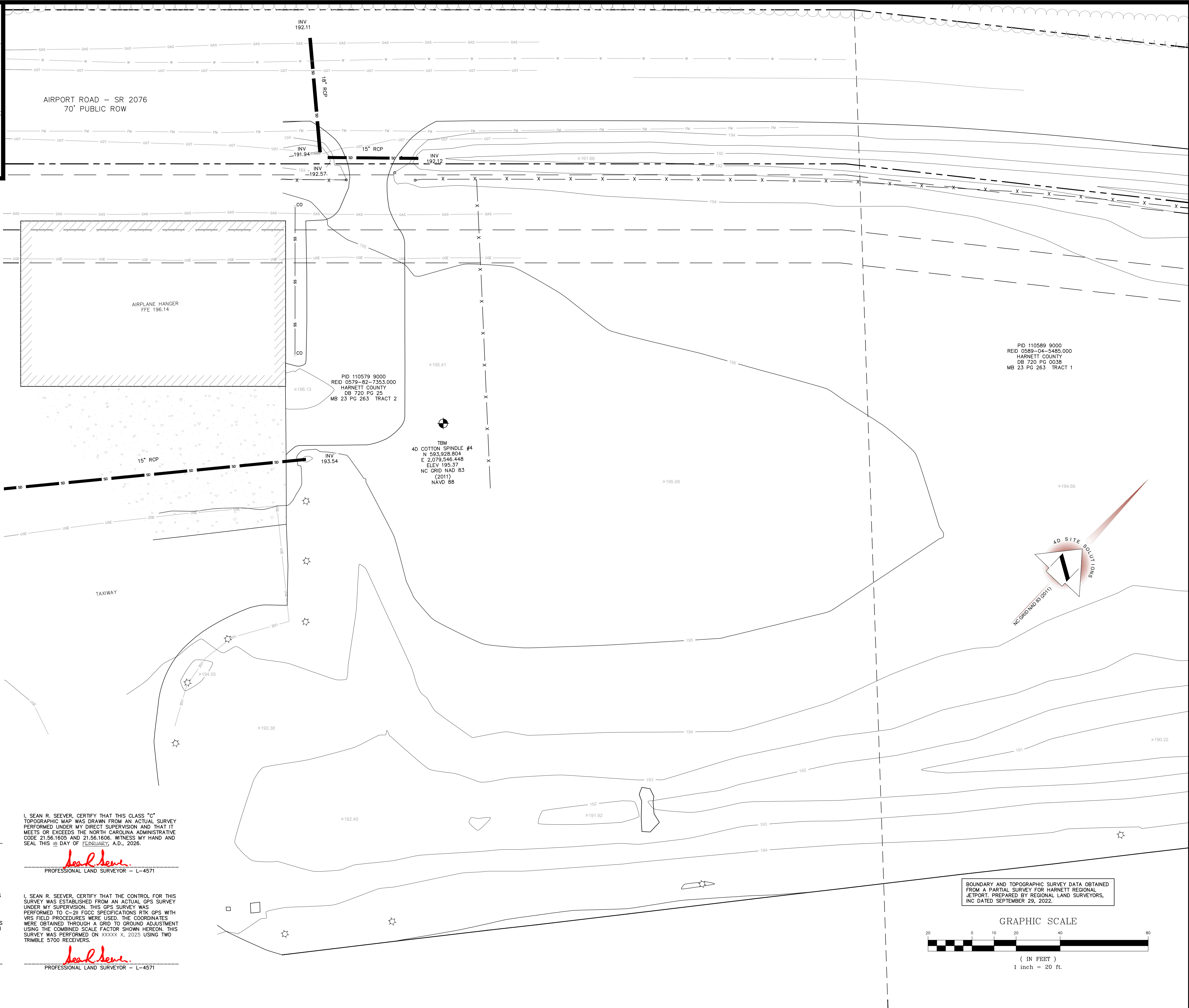
SHEET NUMBER

C-1.0



VICINITY MAP
 NOT TO SCALE

- LEGEND:
- ERS-EXISTING RAILROAD SPIKE
 - EIR-EXISTING IRON ROD
 - SIR-SET IRON ROD
 - SIP-SET IRON PIPE
 - COMPUTED POINT
 - N/F - NOW OR FORMERLY
 - R/W - RIGHT OF WAY
 - RCP - REINFORCED CONCRETE PIPE
 - PROPERTY LINE
 - OLD PROPERTY LINE
 - TIE LINE
 - RIGHT-OF-WAY
 - SETBACK LINE
 - STORM DRAINAGE
 - WATER LINE
 - OVERHEAD UTILITY
 - TREE LINE
 - MAJOR CONTOUR
 - MINOR CONTOUR
 - SPOT ELEVATION
 - BENCHMARK
 - UTILITY POLE
 - GUY WIRE
 - TAXIWAY LIGHTING



I, SEAN R. SEEVER, CERTIFY THAT THIS SURVEY IS OF AN EXISTING PARCEL OR PARCELS OF LAND OR ONE OR MORE EXISTING EASEMENTS AND DOES NOT CREATE A NEW STREET OR CHANGE AN EXISTING STREET.

Sean R. Seever
 PROFESSIONAL LAND SURVEYOR - L-4571

I, SEAN R. SEEVER, CERTIFY THAT THIS CLASS "C" TOPOGRAPHIC MAP WAS DRAWN FROM AN ACTUAL SURVEY PERFORMED UNDER MY DIRECT SUPERVISION AND THAT IT MEETS OR EXCEEDS THE NORTH CAROLINA ADMINISTRATIVE CODE 21.56.1605 AND 21.56.1606. WITNESS MY HAND AND SEAL THIS 18 DAY OF FEBRUARY, A.D., 2026.

Sean R. Seever
 PROFESSIONAL LAND SURVEYOR - L-4571

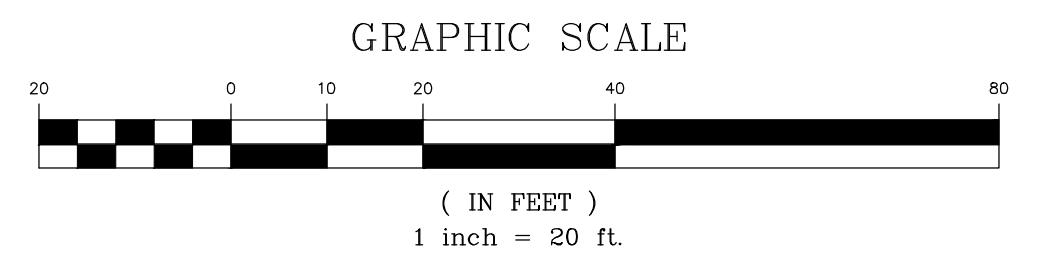
I, SEAN R. SEEVER, CERTIFY THAT THIS MAP WAS DRAWN UNDER MY SUPERVISION FROM AN ACTUAL SURVEY MADE UNDER MY SUPERVISION (DEED DESCRIPTION RECORDED IN BOOK _____ PAGE _____ OR OTHER REFERENCE SOURCE _____) THAT THE BOUNDARIES NOT SURVEYED ARE INDICATED AS DRAWN FROM INFORMATION IN BOOK _____ PAGE _____ OR OTHER REFERENCE SOURCE _____ THAT THE RATIO OF PRECISION OR POSITIONAL ACCURACY IS 1:10,000+; AND THAT THIS MAP MEETS THE REQUIREMENTS OF THE STANDARDS OF PRACTICE FOR LAND SURVEYING IN NORTH CAROLINA (21 NCAC 56.1600). WITNESS MY HAND AND SEAL THIS 18 DAY OF FEBRUARY, 2026.

Sean R. Seever
 PROFESSIONAL LAND SURVEYOR - L-4571

I, SEAN R. SEEVER, CERTIFY THAT THE CONTROL FOR THIS SURVEY WAS ESTABLISHED FROM AN ACTUAL GPS SURVEY UNDER MY SUPERVISION. THIS GPS SURVEY WAS PERFORMED TO C-20 FCCC SPECIFICATIONS RTK GPS WITH VRS FIELD PROCEDURES WERE USED. THE COORDINATES WERE OBTAINED THROUGH A GRID TO GROUND ADJUSTMENT USING THE COMBINED SCALE FACTOR SHOWN HEREON. THIS SURVEY WAS PERFORMED ON XXXXXX X, 2025 USING TWO TRIMBLE 5700 RECEIVERS.

Sean R. Seever
 PROFESSIONAL LAND SURVEYOR - L-4571

BOUNDARY AND TOPOGRAPHIC SURVEY DATA OBTAINED FROM A PARTIAL SURVEY FOR HARNETT REGIONAL JETPORT. PREPARED BY REGIONAL LAND SURVEYORS, INC. DATED SEPTEMBER 29, 2022.



Brian Raynor 1942 Harnett County, NC 28312 02-18-26 17:27 AM



REVISIONS

PROJECT NAME

AIRPORT ROAD HANGAR II

SITE PLAN

CLIENT

BRIAN RAYNOR

2031 Middle Road
 Fayetteville, NC 28312
 Phone: (910) 824-1238
 Fax: (910) 678-9988

PROJECT INFORMATION

DESIGNED BY:	SCOTT
DRAWN BY:	SCOTT
CHECKED BY:	CHRIS
PROJECT NUMBER:	1942

DRAWING SCALE

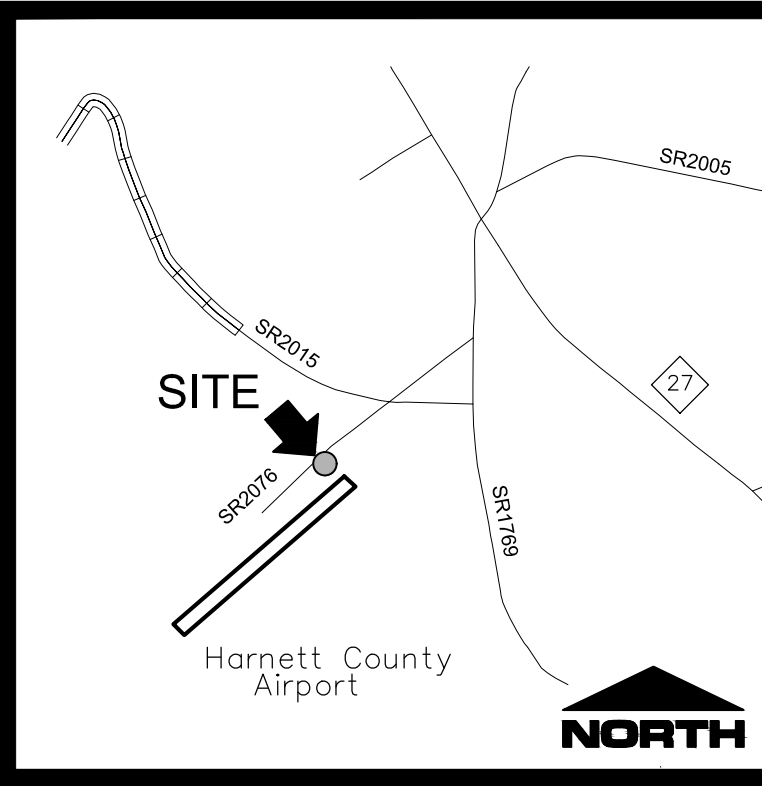
HORIZONTAL: 1"=20'

DATE RELEASED

FEBRUARY 18, 2026

SHEET NUMBER

C-2.0



VICINITY MAP
 NOT TO SCALE

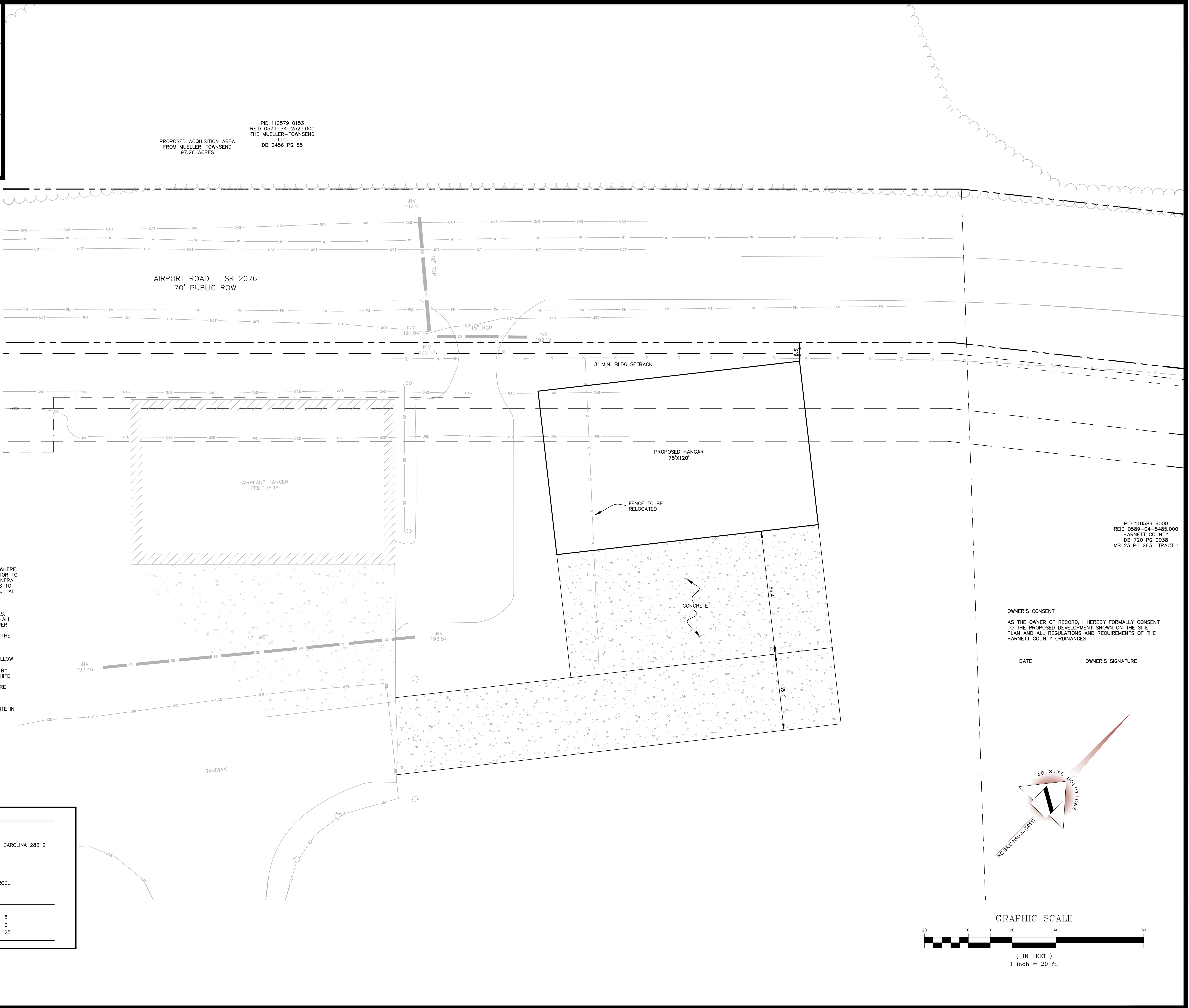
PROPOSED ACQUISITION AREA
 FROM MUELLER-TOWNSEND
 97.26 ACRES

PID 110579 0153
 REID 0579-74-2525.000
 THE MUELLER-TOWNSEND
 LLC
 DB 2456 PG 85

- LEGEND:
- ERS-EXISTING RAILROAD SPIKE
 - EIR-EXISTING IRON ROD
 - SIR-SET IRON ROD
 - SIP-SET IRON PIPE
 - COMPUTED POINT
 - N/F - NOW OR FORMERLY
 - R/W - RIGHT OF WAY
 - PROPERTY LINE
 - OLD PROPERTY LINE
 - TIE LINE
 - RIGHT-OF-WAY
 - SETBACK LINE
 - STORM DRAINAGE
 - WATER LINE
 - OVERHEAD UTILITY
 - TREE LINE
 - MAJOR CONTOUR
 - MINOR CONTOUR
 - SPOT ELEVATION
 - BENCHMARK
 - UTILITY POLE
 - GUY WIRE
 - LIGHT POLE

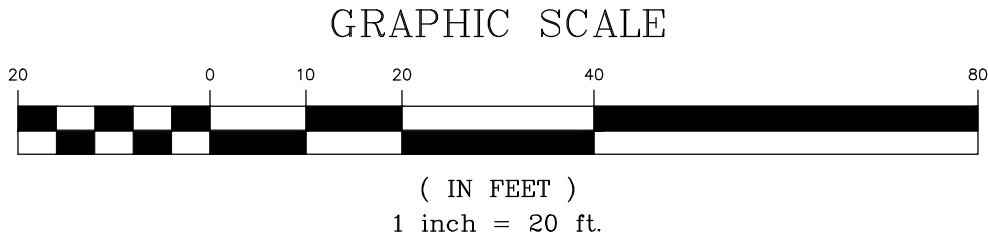
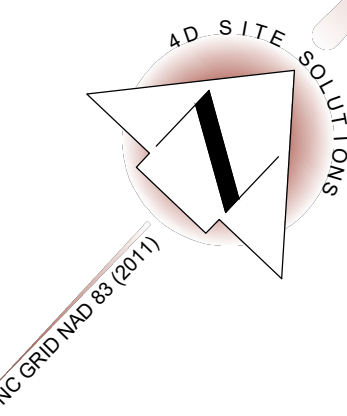
- SITE NOTES
- EXISTING UNDERGROUND UTILITIES ARE SHOWN ONLY WHERE EVIDENCE COULD BE FOUND TO VERIFY LOCATION. PRIOR TO CONSTRUCTION OR EXCAVATION OF THE SITE, THE GENERAL CONTRACTOR SHALL CONTACT ALL UTILITY COMPANIES TO VERIFY THE LOCATION OF THEIR RESPECTIVE UTILITIES. ALL DAMAGE INCURRED TO EXISTING UTILITIES DURING CONSTRUCTION SHALL BE REPAIRED AT THE GENERAL CONTRACTOR'S EXPENSE.
 - ASPHALT AND BASE TYPE SHALL BE PER THE DETAILS.
 - HANDICAP RAMPS, SIGNAGE AND PARKING SPACES SHALL BE PROVIDED BY THE CONTRACTOR AND INSTALLED PER FEDERAL ADA AND LOCAL REQUIREMENTS.
 - ALL DIMENSIONS ARE TO THE BACK OF CURB OR TO THE FACE OF SIDEWALK UNLESS OTHERWISE NOTED.
 - ALL RADII ARE 5' UNLESS OTHERWISE NOTED.
 - PARKING STALLS MUST BE STRIPED WITH A 4 INCH CONTRASTING STRIPE (YELLOW ON CONCRETE AND YELLOW OR WHITE ON ASPHALT PARKING LOT).
 - HANDICAP PARKING SPACES ARE TO BE DESIGNATED BY BLUE STRIPING AND EITHER A BLUE SYMBOL ON A WHITE BACKGROUND OR A WHITE SYMBOL ON A BLUE BACKGROUND. ALL HANDICAP PARKING STALLS REQUIRE THE INSTALLATION OF THE PROPER SIGNAGE.
 - ALL PARKING SPACES ARE TO BE LAID OUT IN ACCORDANCE WITH THE SITE PLAN DIMENSIONS.
 - ALL WASTE MATERIAL SHALL BE DISPOSED OF OFF-SITE IN ACCORDANCE WITH STATE AND LOCAL LAWS AND REGULATIONS.
 - ALL SITE IMPROVEMENTS SHALL BE INSTALLED PER HARNETT COUNTY AND STATE REGULATIONS.

SITE DATA	
DEVELOPER	BRIAN RAYNOR
MAILING ADDRESS	2031 MIDDLE ROAD
CITY, STATE	FAYETTEVILLE, NORTH CAROLINA 28312
PIN NUMBER	0579-82-7353.000
TOTAL LOT AREA	XX AC
AREA TO BE DEVELOPED	XX AC
EXISTING ZONING	INDUSTRIAL
EXISTING USE	AIRPORT VACANT PARCEL
PROPOSED USE	HANGAR
DISTURBED/DENUDED AREA	0.78 AC
SETBACKS REQUIRED:	
FRONT	8
SIDE	0
REAR	25



OWNER'S CONSENT
 AS THE OWNER OF RECORD, I HEREBY FORMALLY CONSENT TO THE PROPOSED DEVELOPMENT SHOWN ON THE SITE PLAN AND ALL REGULATIONS AND REQUIREMENTS OF THE HARNETT COUNTY ORDINANCES.

DATE _____ OWNER'S SIGNATURE _____





02-18-26

REVISIONS

PROJECT NAME

AIRPORT ROAD HANGAR II

GRADING AND EROSION CONTROL PLAN

CLIENT

BRIAN RAYNOR

2031 Middle Road
 Fayetteville, NC 28312
 Phone: (910) 824-1238
 Fax: (910) 678-9988

PROJECT INFORMATION

DESIGNED BY:	SCOTT
DRAWN BY:	SCOTT
CHECKED BY:	CHRIS
PROJECT NUMBER:	1942

DRAWING SCALE

HORIZONTAL: 1"=20'

DATE RELEASED

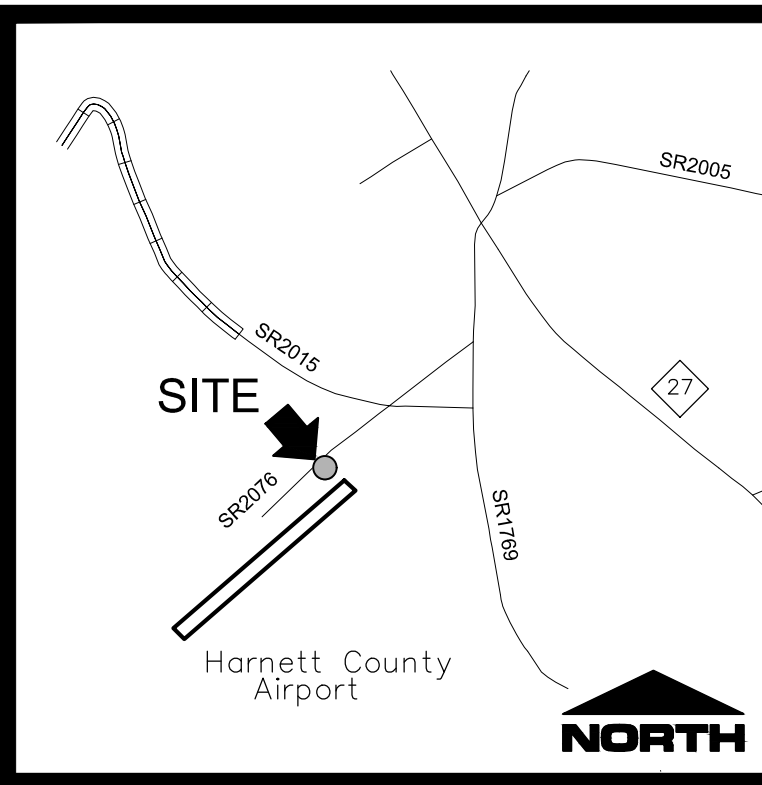
FEBRUARY 18, 2026

SHEET NUMBER

C-3.0

GROUND STABILIZATION CHART

SITE AREA DESCRIPTION	STABILIZATION TIME FRAME	STABILIZATION TIME FRAME EXCEPTIONS
PERIMETER DIKES, SWALES, DITCHES AND SLOPES	7 DAYS	NONE
HIGH QUALITY WATER (HOW) ZONES	7 DAYS	NONE
SLOPES STEEPER THAN 3:1	7 DAYS	IF SLOPES ARE 10' OR LESS IN LENGTH AND ARE NOT STEEPER THAN 2:1, 14 DAYS ARE ALLOWED
SLOPES 3:1 OR FLATTER	14 DAYS	7-DAYS FOR SLOPES GREATER THAN 50 FEET IN LENGTH
ALL OTHER AREAS WITH SLOPES FLATTER THAN 4:1	14 DAYS	NONE (EXCEPT FOR PERIMETERS AND HOW ZONES)



VICINITY MAP NOT TO SCALE

PID 110579 0153
 REID 0579-74-2525.000
 THE MUELLER-TOWNSEND LLC
 DB 2456 PG 85

PROPOSED ACQUISITION AREA FROM MUELLER-TOWNSEND 97.26 ACRES

- LEGEND:**
- ERS-EXISTING RAILROAD SPIKE
 - EIR-EXISTING IRON ROD
 - SIR-SET IRON ROD
 - SIP-SET IRON PIPE
 - COMPUTED POINT
 - N/F - NOW OR FORMERLY
 - R/W - RIGHT OF WAY
 - PROPERTY LINE
 - OLD PROPERTY LINE
 - TIE LINE
 - RIGHT-OF-WAY
 - SETBACK LINE
 - STORM DRAINAGE
 - WATER LINE
 - OVERHEAD UTILITY
 - TREE LINE
 - MAJOR CONTOUR
 - MINOR CONTOUR
 - SPOT ELEVATION
 - BENCHMARK
 - UTILITY POLE
 - GUY WIRE
 - LIGHT POLE

GRADING NOTES

- ALL ELEVATIONS SHOWN ARE IN REFERENCE TO THE BENCHMARK AND MUST BE VERIFIED BY THE GENERAL CONTRACTOR. ALL SPOT ELEVATIONS ARE TO THE FINISHED GRADE OF THE CURB, UNLESS OTHERWISE NOTED.
- ALL SIDEWALKS AND PEDESTRIAN WALKING SURFACES SHALL HAVE A CROSS SLOPE NO STEEPER THAN 2% AND LONGITUDINAL SLOPE NO STEEPER THAN 5%.
- THE CONTRACTOR SHALL ASSUME RESPONSIBILITY FOR ALL LAND DISTURBING ACTIVITIES AND ENSURE COMPLIANCE WITH THE APPROVED EROSION AND SEDIMENTATION CONTROL PLAN. THE CONTRACTOR SHALL INSPECT AND MAINTAIN ALL EROSION CONTROL DEVICES AND CLEAR ANY DEBRIS LEAVING THE SITE ON NEIGHBORING ROADS.
- EXISTING GROUND UPON WHICH FILL OR BASE IS TO BE PLACED SHALL BE CLEARED OF WEEDS, DEBRIS, TOPSOIL AND ALL OTHER DELETERIOUS MATERIALS; NO FILL SHALL BE PLACED UNTIL PREPARATION OF THE EXISTING GROUND HAS BEEN COMPLETED.
- PROTECTIVE MEASURES SHALL BE TAKEN BY THE CONTRACTOR AND THE OWNER TO PROTECT ADJACENT PROPERTY, THE PUBLIC AND UTILITIES DURING GRADING OPERATIONS. THE CONTRACTOR ASSUMES ALL LIABILITY FOR THE UNDERGROUND UTILITY PIPES, CONDUITS, OR STRUCTURES, WHETHER SHOWN OR NOT ON THE PLAN.
- IT SHALL BE THE CONTRACTOR'S RESPONSIBILITY TO VERIFY THE LOCATION OF ALL UTILITIES OR STRUCTURES ABOVE AND BELOW GROUND, SHOWN OR NOT SHOWN ON THESE PLANS. THEY WILL BE HELD RESPONSIBLE FOR ALL DAMAGE TO ANY UTILITIES OR STRUCTURES CAUSED BY HIS OPERATION.
- ALL CUT AND FILL SLOPES SHOULD BE INVESTIGATED BOTH DURING AND AFTER GRADING BY THE CONTRACTOR TO DETERMINE IF ANY SLOPE STABILITY PROBLEMS EXIST. IF IT IS DETERMINED THAT THERE IS A SLOPE STABILITY PROBLEM THE ENGINEER OF RECORD SHOULD BE NOTIFIED.
- STOCKPILE AREAS THAT WILL EXCEED 10' IN HEIGHT SHOULD BE GRADED WITH 3:1 SLOPES AND SURROUNDED BY SILT FENCE.
- APPROVED COPIES OF THE GRADING AND EROSION CONTROL PLANS SHALL BE ON THE PERMITTED SITE WHILE WORK IS IN PROGRESS.
- ALL EXISTING DRAINAGE COURSES THROUGH THIS SITE SHALL REMAIN IN A CONDITION SUCH THAT THEY CAN TRANSPORT THE NATURAL DRAINAGE UNTIL FACILITIES TO HANDLE THE STORM WATER ARE CONSTRUCTED. THE CONTRACTOR SHALL BE RESPONSIBLE FOR ANY DAMAGE DUE TO OBSTRUCTING NATURAL DRAINAGE PATTERNS.
- ANY DEVIATION FROM THE APPROVED GRADING PLAN SHOULD BE REPORTED TO THE ENGINEER OF RECORD PRIOR TO IMPLEMENTATION OF THE CHANGE.
- ALL SLOPES 3:1 OR STEEPER THAT EXTEND TEN FEET OR MORE SHALL BE LINED WITH NORTH AMERICAN GREEN S75 TEMPORARY EROSION CONTROL BLANKET OR EQUAL SUBSTITUTE.
- STORM PIPE DISTANCES SHOWN ARE TO THE CENTER OF THE BOX FOR ALL STRUCTURES UNLESS OTHERWISE NOTED.

EROSION CONTROL NOTES

- ALL INLET/OUTLET PROTECTION WILL BE CHECKED FOR MAINTENANCE AND FAILURE EACH ACTIVE DAY ON SITE. SEDIMENT WILL BE REMOVED FROM THE SEDIMENT TRAP AND INLET PROTECTION DEVICES WHEN THE STORAGE CAPACITY HAS BEEN APPROXIMATELY 50% FILLED. GRAVEL WILL BE CLEANED OR REPLACED WHEN THE SEDIMENT POOL NO LONGER DRAINS PROPERLY. SEDIMENT WILL BE REMOVED FROM BEHIND THE SEDIMENT FENCE WHEN IT BECOMES ABOUT 0.5' DEEP AT THE FENCE. THE SEDIMENT FENCE WILL BE REPAIRED AS NEEDED TO MAINTAIN A PROPER BARRIER.
- TEMPORARY EROSION CONTROL FACILITIES AND/OR PERMANENT FACILITIES INTENDED TO CONTROL EROSION OF AND EARTH DISTURBANCE OPERATION SHALL BE INSTALLED BEFORE ANY EARTH DISTURBANCE OPERATIONS TAKE PLACE OR AT THE EARLIEST POSSIBLE POINT DURING CONSTRUCTION.
- TEMPORARY & PERMANENT EROSION CONTROL MEASURES SHALL BE CONSTRUCTED PER THE DETAILS HEREIN OR PERMANENT FACILITIES INTENDED TO CONTROL EROSION OF AND EARTH DISTURBANCE OPERATION SHALL BE CONSTRUCTED IN ACCORDANCE WITH THE NORTH CAROLINA EROSION AND SEDIMENT CONTROL PLANNING AND DESIGN MANUAL.
- REMOVE ALL SOILS AND SEDIMENTS TRACKED OR OTHERWISE DEPOSITED ONTO PUBLIC AND PRIVATE PAVEMENT AREAS. REMOVAL SHALL BE ON A DAILY BASIS WHEN TRACKING OCCURS.

- DO NOT REMOVE ANY EROSION AND SEDIMENT CONTROL DEVICES AFTER THE PROTECTED AREA HAS UNDERGONE FINAL STABILIZATION AND PERMANENT VEGETATION HAS BEEN ESTABLISHED. IT IS RECOMMENDED THAT NODDIE APPROVE THE ACTION PRIOR TO REMOVAL.
- THE CONSTRUCTION ENTRANCE SHALL BE INSTALLED CONCURRENTLY WITH THE INITIATION OF CONSTRUCTION ACTIVITY.
- THE INSTALLATION OF EROSION CONTROL MEASURES SHALL TAKE PRECEDENCE OVER ALL OTHER CONSTRUCTION ACTIVITIES.
- THE PERMITTEE SHALL BE HELD RESPONSIBLE FOR THE ACTIONS AND PERFORMANCE OF ANY OTHER PARTIES PERFORMING WORK ON THIS PROJECT.
- ALL EROSION AND SEDIMENT CONTROL PRACTICES WILL BE CHECKED FOR STABILITY AND OPERATION FOLLOWING EVERY RUNOFF—PRODUCING RAINFALL BUT IN NO CASE LESS THAN ONCE EVERY WEEK. ANY NEEDED REPAIRS WILL BE MADE IMMEDIATELY TO MAINTAIN ALL PRACTICES AS DESIGNED.
- PURSUANT TO G.S. 113A-57(2), THE ANGLE FOR GRADED SLOPES AND FILLS SHALL BE NO GREATER THAN THE ANGLE THAT CAN BE RETAINED BY VEGETATIVE COVER OR OTHER ADEQUATE EROSION CONTROL DEVICES OR STRUCTURES. IN ANY EVENT, SLOPES LEFT EXPOSED WILL, WITHIN 7 OR 14 CALENDAR DAYS OF COMPLETION OF ANY PHASE OF GRADING, BE PLANTED OR OTHERWISE PROVIDED WITH

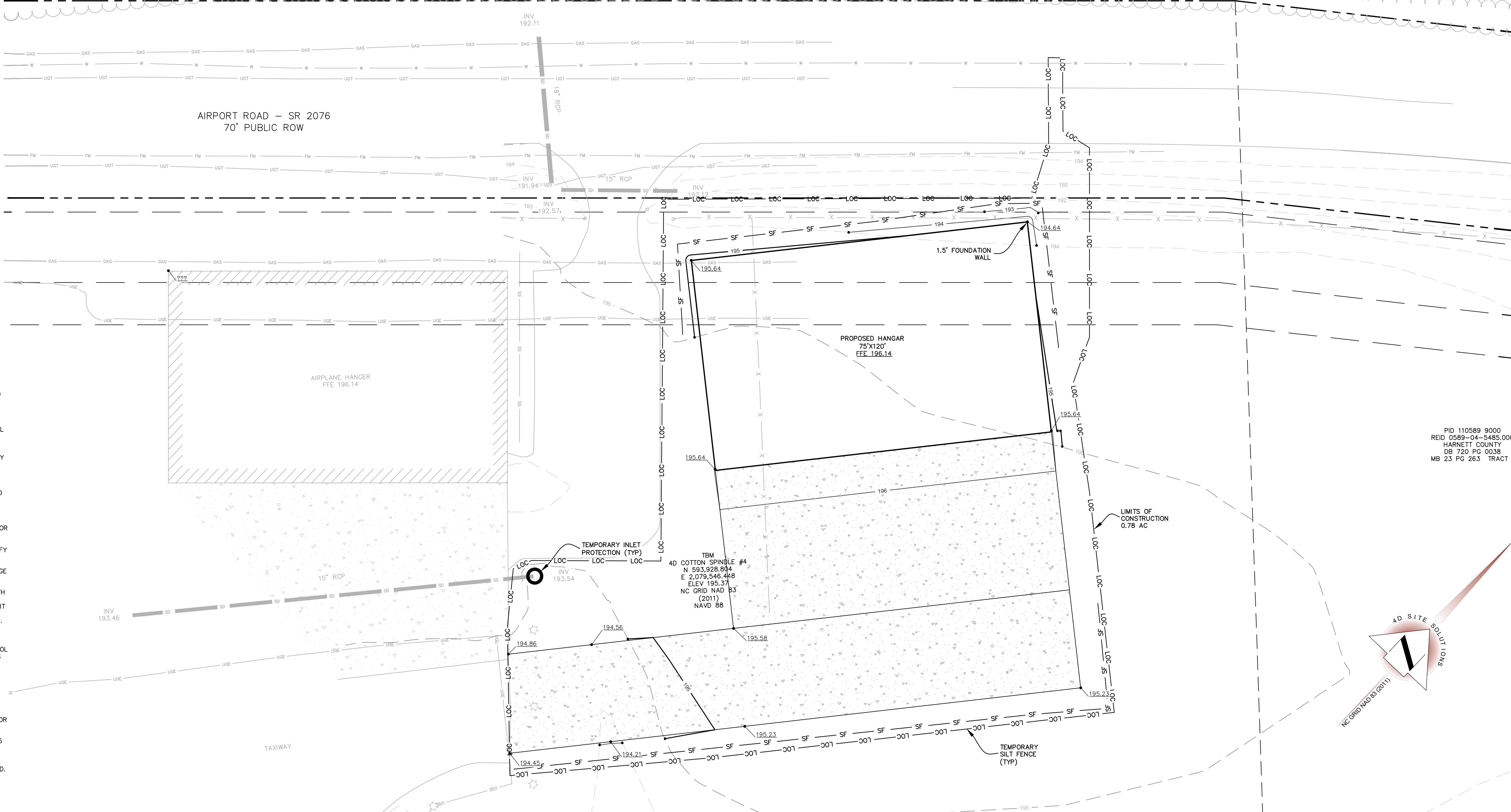
- TEMPORARY OR PERMANENT GROUND COVER, DEVICES OR STRUCTURES SUFFICIENT TO RESTRAIN EROSION, PURSUANT TO G.S. 113A-57(3), PROVISIONS FOR PERMANENT GROUND COVER SUFFICIENT TO RETAIN EROSION MUST BE ACCOMPLISHED FOR ALL DISTURBED AREAS WITHIN 90 CALENDAR DAYS FOLLOWING COMPLETION OF CONSTRUCTION OR DEVELOPMENT.
- CONTRACTOR IS RESPONSIBLE FOR INSTALLING ALL EROSION CONTROL MEASURES SHOWN AND ANY ADDITIONAL MEASURES REQUIRED TO CONTROL THE SEDIMENT DURING THE COURSE OF CONSTRUCTION.
- ALL SEEDED AREAS WILL BE FERTILIZED, RESEED AS NECESSARY, AND MULCHED ACCORDING TO THE DETAILS HEREIN.
- THE CONTACT PERSON FOR EROSION CONTROL ISSUES THAT ARISE ON SITE IS BRIAN RAYNOR, CONTACT 910-824-1238.

TEMPORARY OR PERMANENT GROUND COVER, DEVICES OR STRUCTURES SUFFICIENT TO RESTRAIN EROSION, PURSUANT TO G.S. 113A-57(3), PROVISIONS FOR PERMANENT GROUND COVER SUFFICIENT TO RETAIN EROSION MUST BE ACCOMPLISHED FOR ALL DISTURBED AREAS WITHIN 90 CALENDAR DAYS FOLLOWING COMPLETION OF CONSTRUCTION OR DEVELOPMENT.

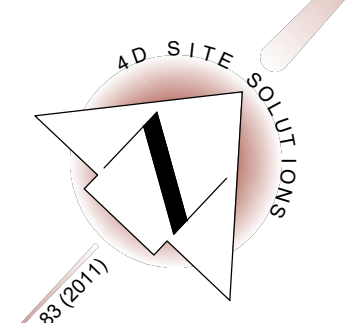
CONTRACTOR IS RESPONSIBLE FOR INSTALLING ALL EROSION CONTROL MEASURES SHOWN AND ANY ADDITIONAL MEASURES REQUIRED TO CONTROL THE SEDIMENT DURING THE COURSE OF CONSTRUCTION.

ALL SEEDED AREAS WILL BE FERTILIZED, RESEED AS NECESSARY, AND MULCHED ACCORDING TO THE DETAILS HEREIN.

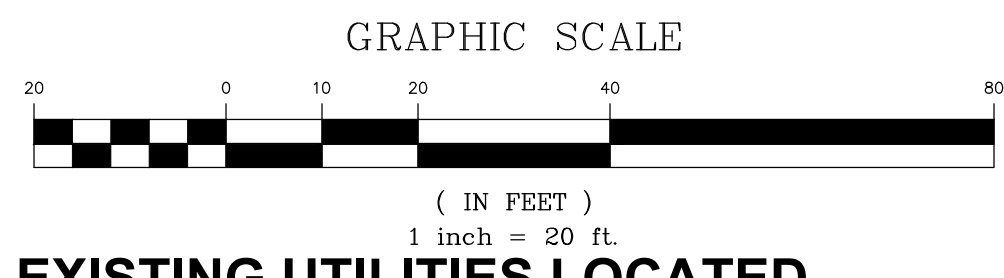
THE CONTACT PERSON FOR EROSION CONTROL ISSUES THAT ARISE ON SITE IS BRIAN RAYNOR, CONTACT 910-824-1238.



PID 110589 9000
 REID 0589-04-5485.000
 HARNETT COUNTY
 DB 720 PG 0038
 MB 23 PG 263 TRACT 1



Know what's below.
 Call before you dig.



THE CONTRACTOR MUST CONTACT NORTH CAROLINA ONE CALL CENTER AT 1-800-632-4949 A MINIMUM OF 72 HOURS PRIOR TO DIGGING IN ORDER TO HAVE THE EXISTING UTILITIES LOCATED

I:\Projects\1942\1942-01\Drawings\1942-01-01\1942-01-01.dwg, 2/18/26, 10:52 AM, 1942-01-01.dwg, 2/18/26, 10:52 AM



02-18-26

REVISIONS

PROJECT NAME

AIRPORT ROAD HANGAR II

UTILITY PLAN

PIN:

CLIENT

BRIAN RAYNOR

2031 Middle Road
 Fayetteville, NC 28312
 Phone: (910) 824-1238
 Fax: (910) 678-9988

PROJECT INFORMATION

DESIGNED BY:	SCOTT
DRAWN BY:	SCOTT
CHECKED BY:	CHRIS
PROJECT NUMBER:	1942

DRAWING SCALE

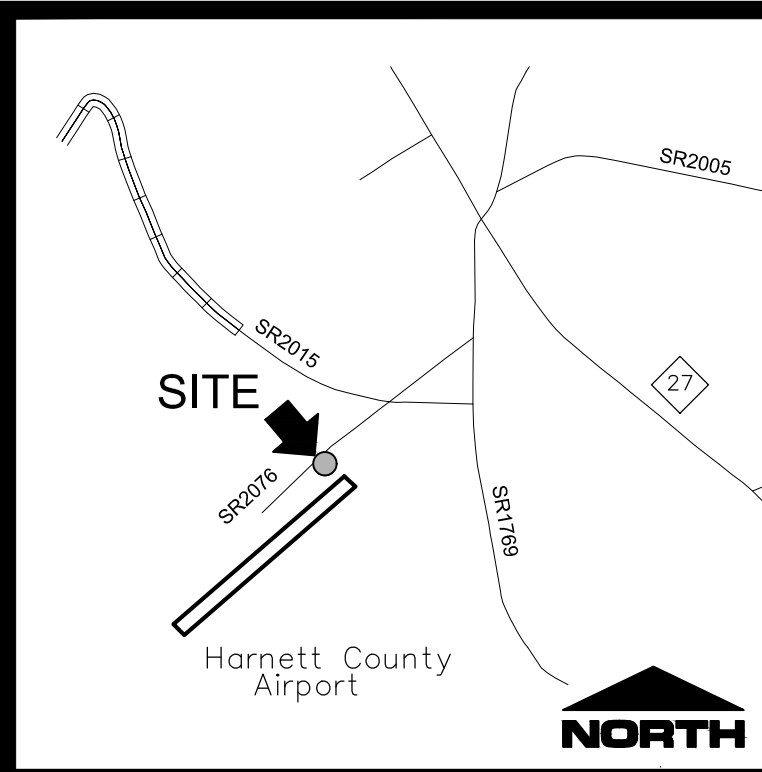
HORIZONTAL: 1"=20'

DATE RELEASED

FEBRUARY 18, 2026

SHEET NUMBER

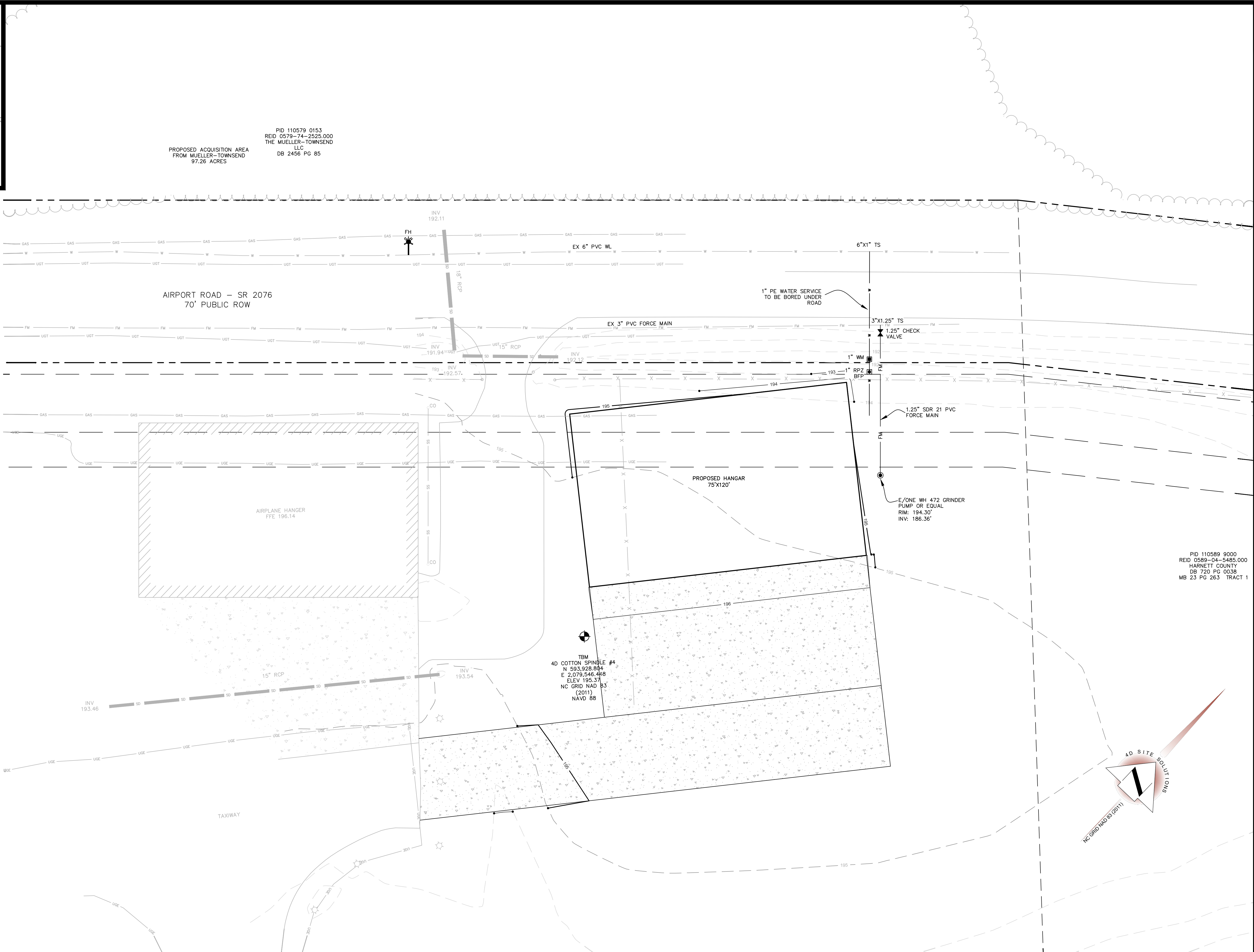
C-4.0



VICINITY MAP
NOT TO SCALE

PROPOSED ACQUISITION AREA FROM MUELLER-TOWNSEND 97.26 ACRES
 PID 110579 0153
 REID 0579-74-2525.000
 THE MUELLER-TOWNSEND LLC
 DB 2456 PG 85

- LEGEND:
- ERS-EXISTING RAILROAD SPIKE
 - EIR-EXISTING IRON ROD
 - SIR-SET IRON ROD
 - SIP-SET IRON PIPE
 - COMPUTED POINT
 - N/F - NOW OR FORMERLY
 - R/W - RIGHT OF WAY
 - PROPERTY LINE
 - OLD PROPERTY LINE
 - TIE LINE
 - RIGHT-OF-WAY
 - SETBACK LINE
 - STORM DRAINAGE
 - WATER LINE
 - OVERHEAD UTILITY
 - TREE LINE
 - MAJOR CONTOUR
 - MINOR CONTOUR
 - SPOT ELEVATION
 - BENCHMARK
 - UTILITY POLE
 - GUY WIRE
 - LIGHT POLE

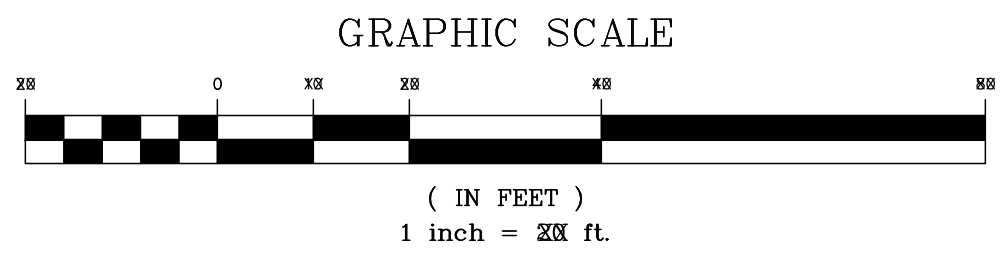


PID 110589 9000
 REID 0589-04-5485.000
 HARNETT COUNTY
 DB 720 PG 0038
 MB 23 PG 263 TRACT 1

TBM
 4D COTTON SPINDLE #4
 N 593,928.804
 E 2,079,548.448
 ELEV 195.37
 NC GRID NAD 83
 (2011)
 NAVD 88



*SEE SHEET G-1.0 FOR UTILITY NOTES



THE CONTRACTOR MUST CONTACT NORTH CAROLINA ONE CALL CENTER AT 1-800-632-4949 A MINIMUM OF 72 HOURS PRIOR TO DIGGING IN ORDER TO HAVE THE EXISTING UTILITIES LOCATED

I:\Data\Raynor\1942\Airport Hangar II\1942-02-18-26.dwg
 1942-02-18-26.dwg
 2/18/26 10:58 AM



REVISIONS

PROJECT NAME

AIRPORT ROAD HANGAR II

SITE & EROSION CONTROL DETAILS

CLIENT

BRIAN RAYNOR

2031 Middle Road
Fayetteville, NC 28312
Phone: (910) 824-1238
Fax: (910) 678-9988

PROJECT INFORMATION

DESIGNED BY:	SCOTT
DRAWN BY:	SCOTT
CHECKED BY:	CHRIS
PROJECT NUMBER:	1942

DRAWING SCALE

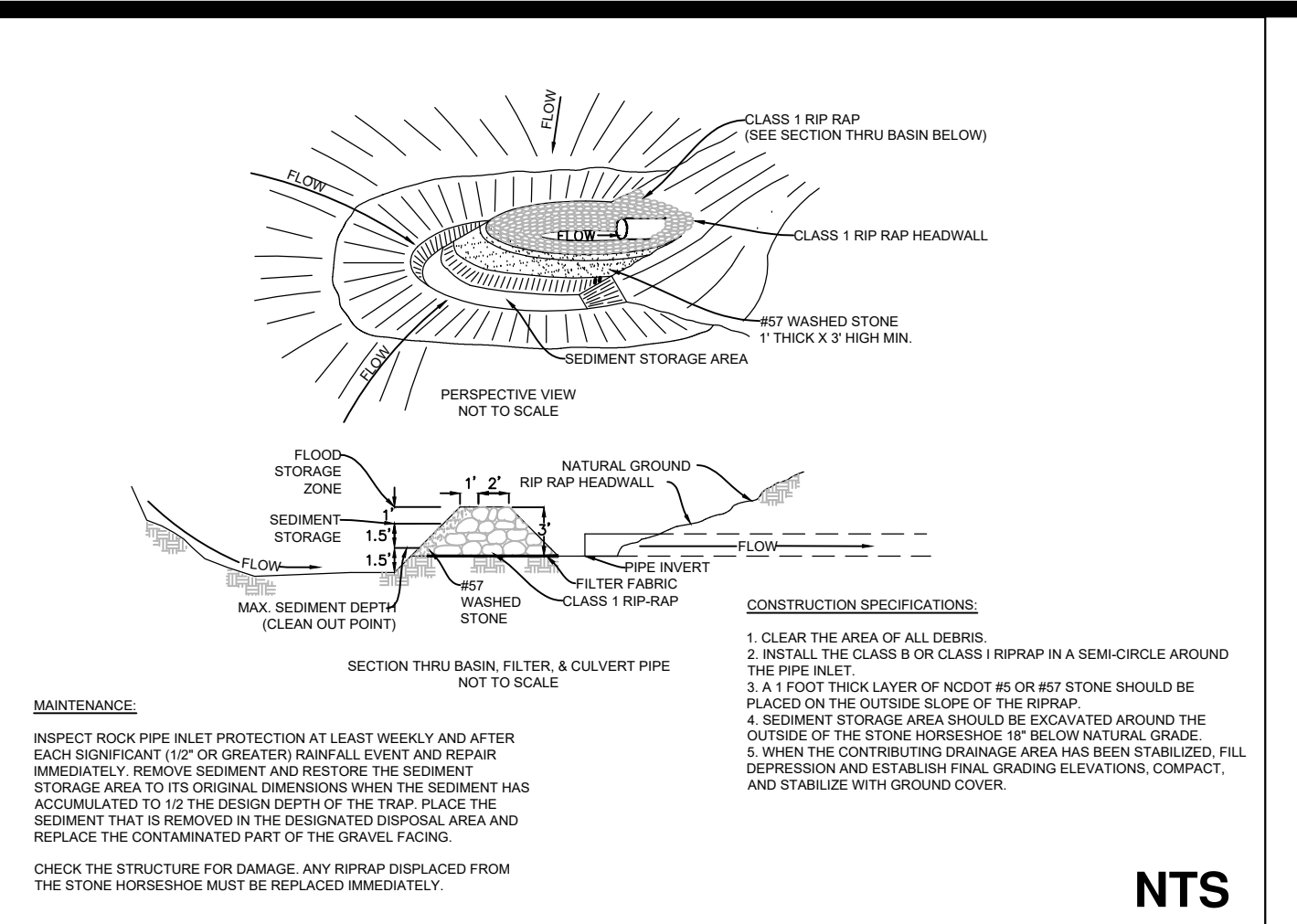
NOT TO SCALE

DATE RELEASED

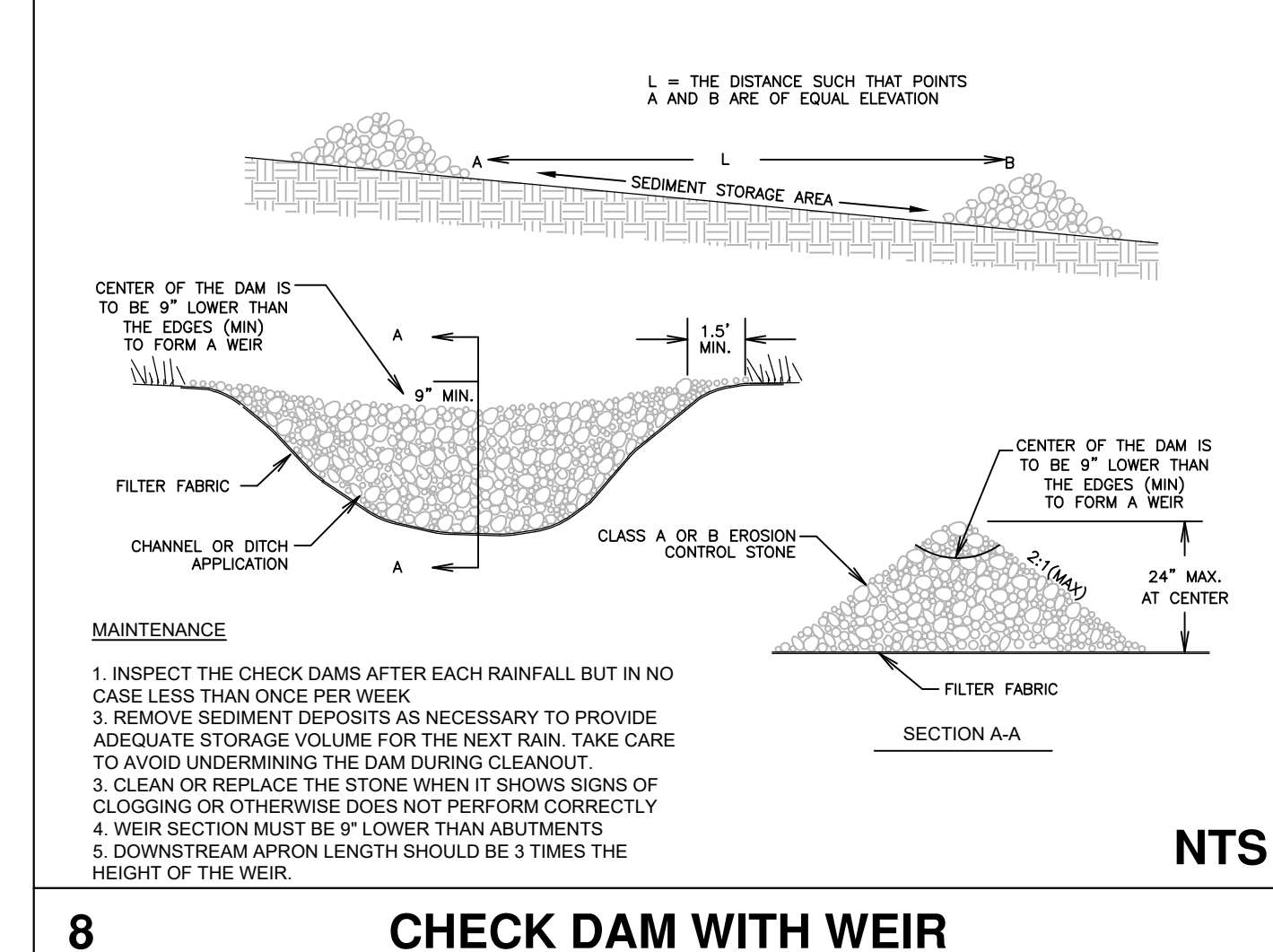
FEBRUARY 18, 2026

SHEET NUMBER

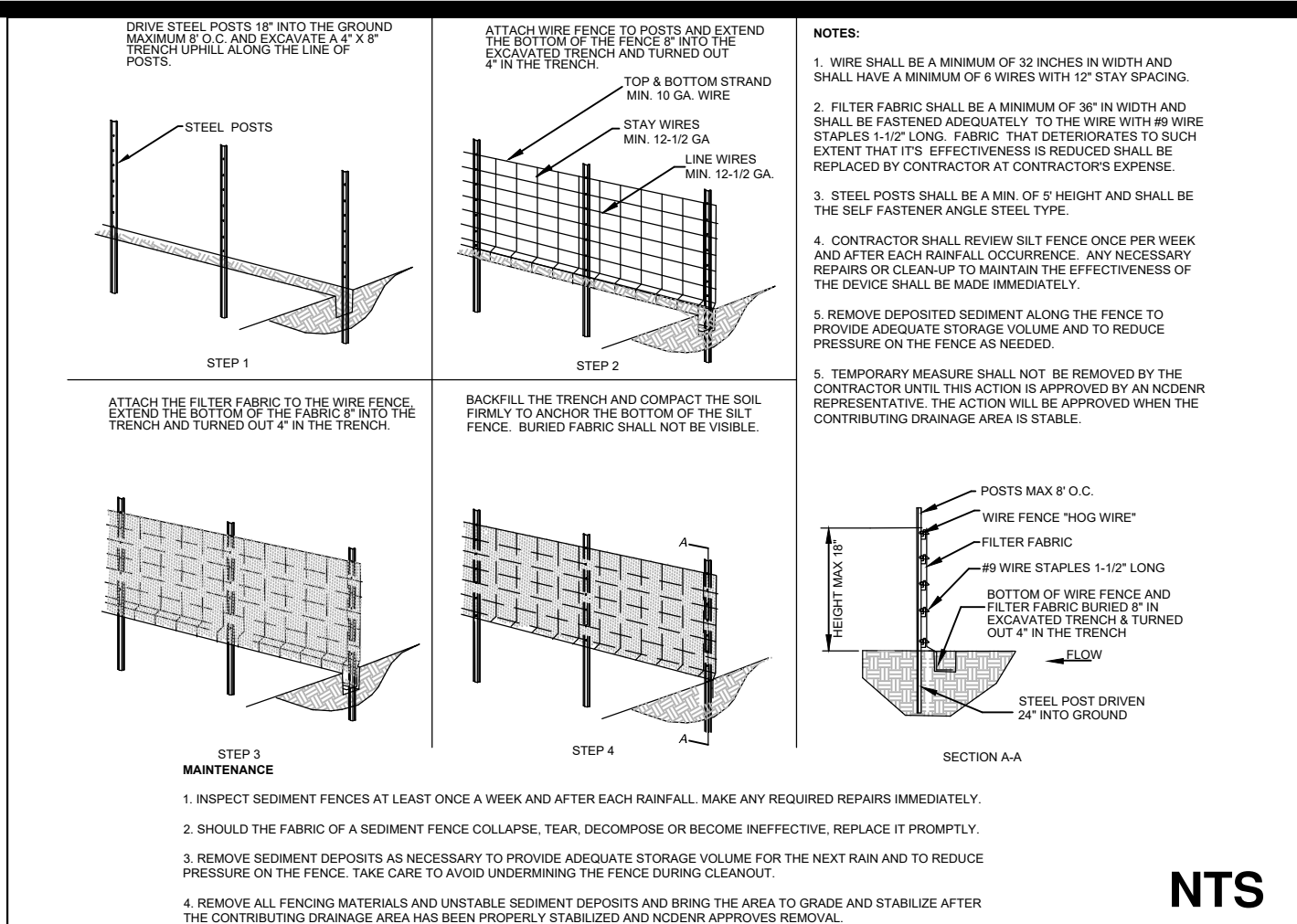
C-5.0



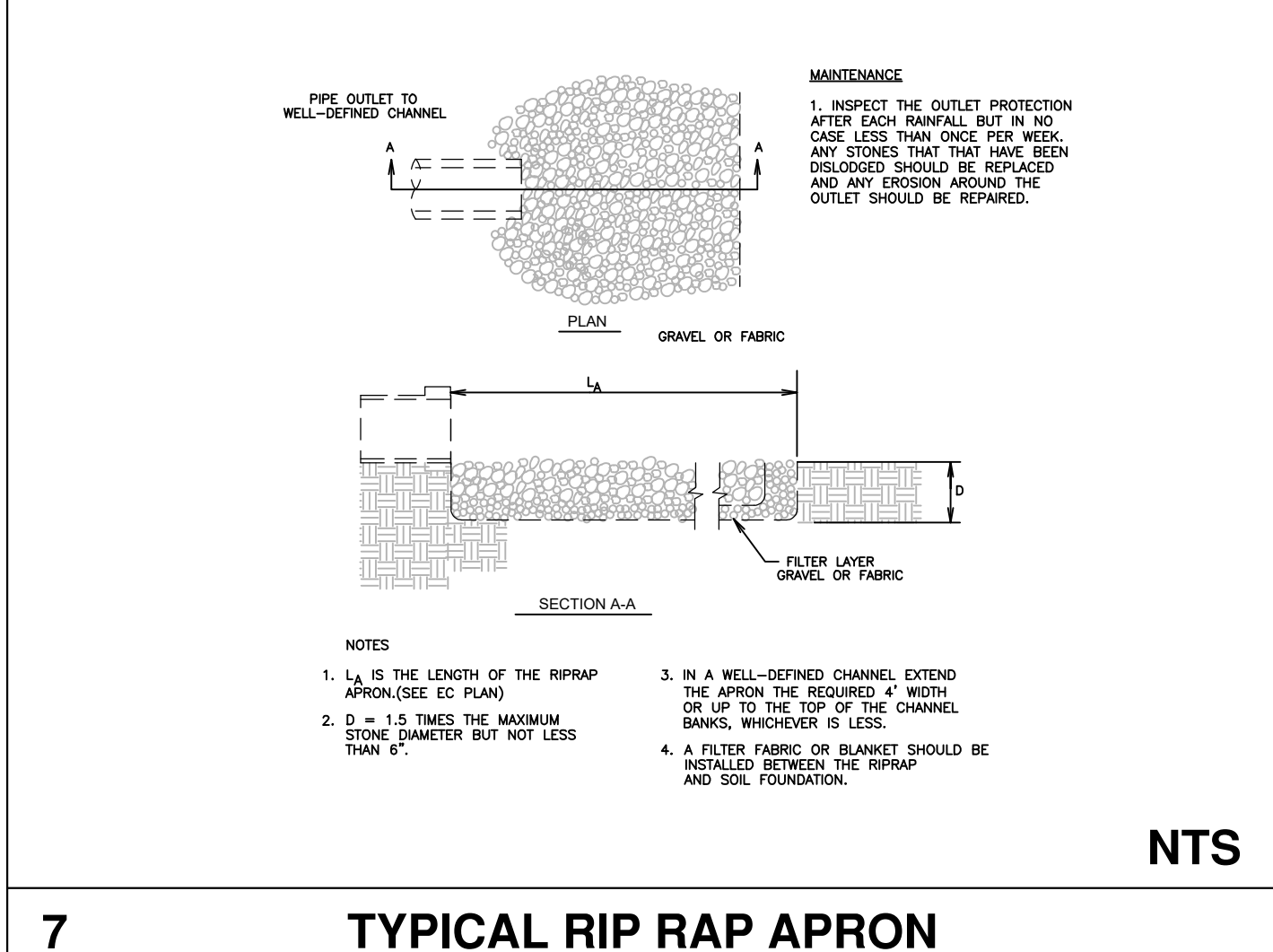
4 ROCK PIPE INLET PROTECTION



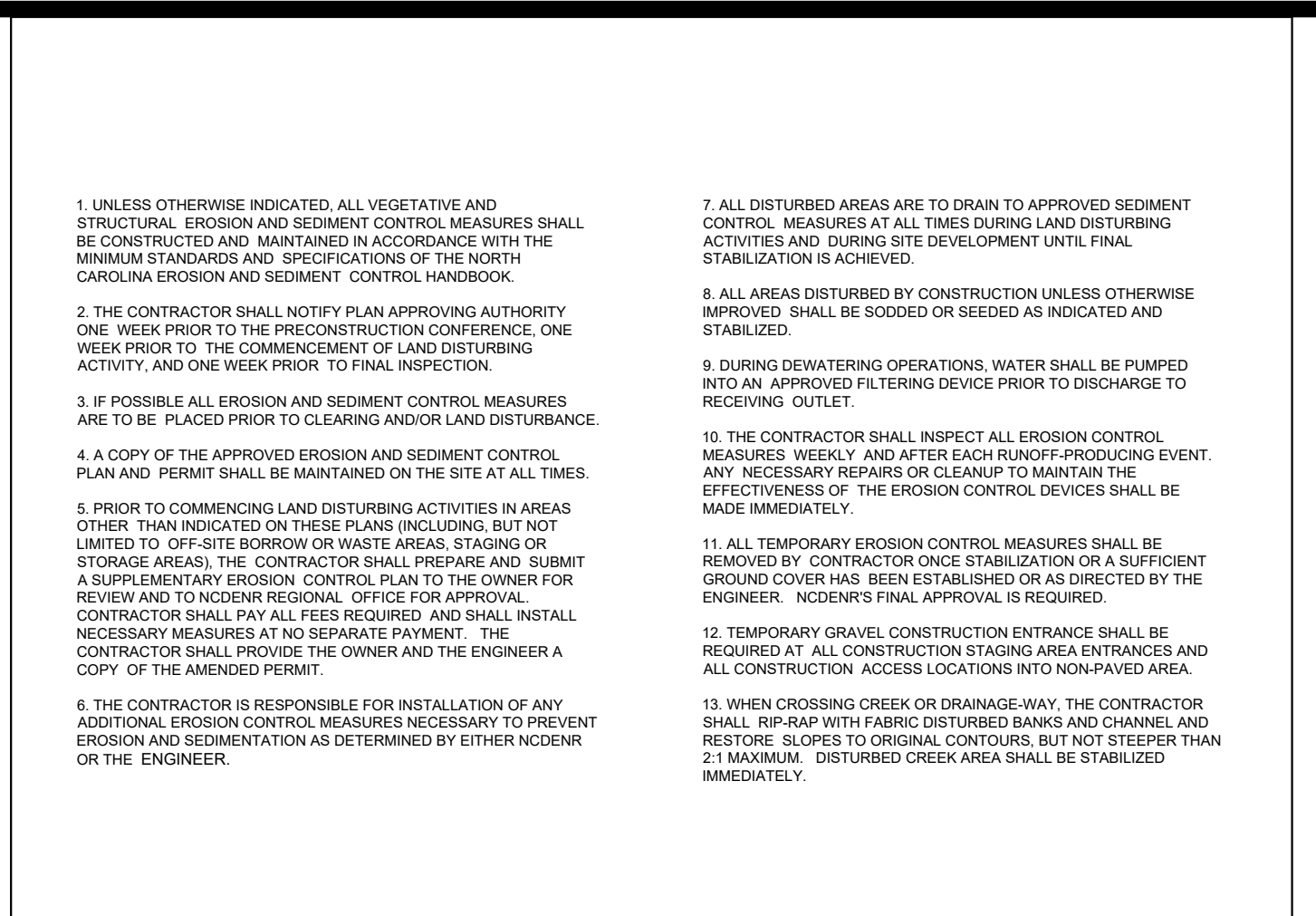
7 TYPICAL RIP RAP APRON



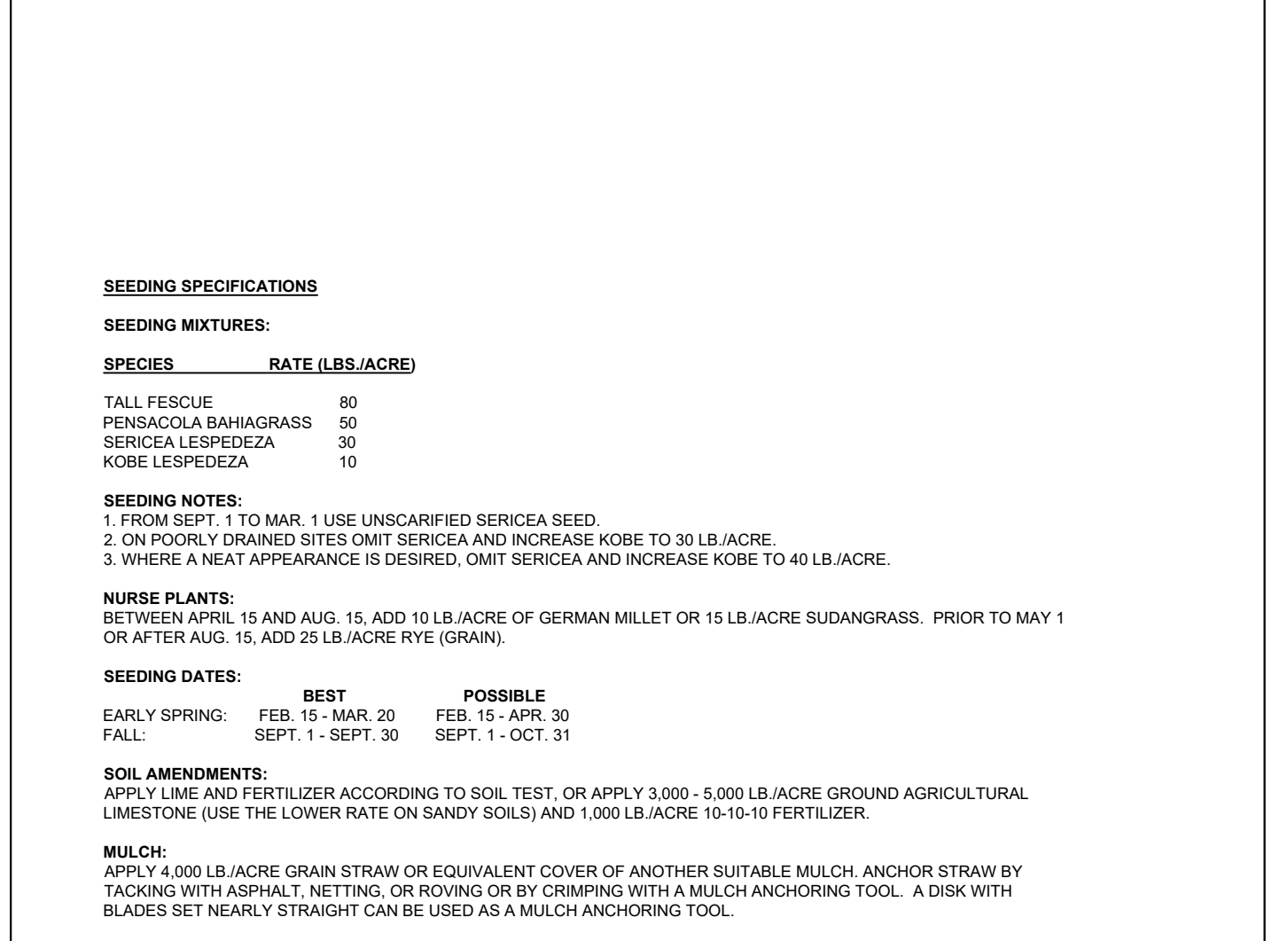
3 SILT FENCE



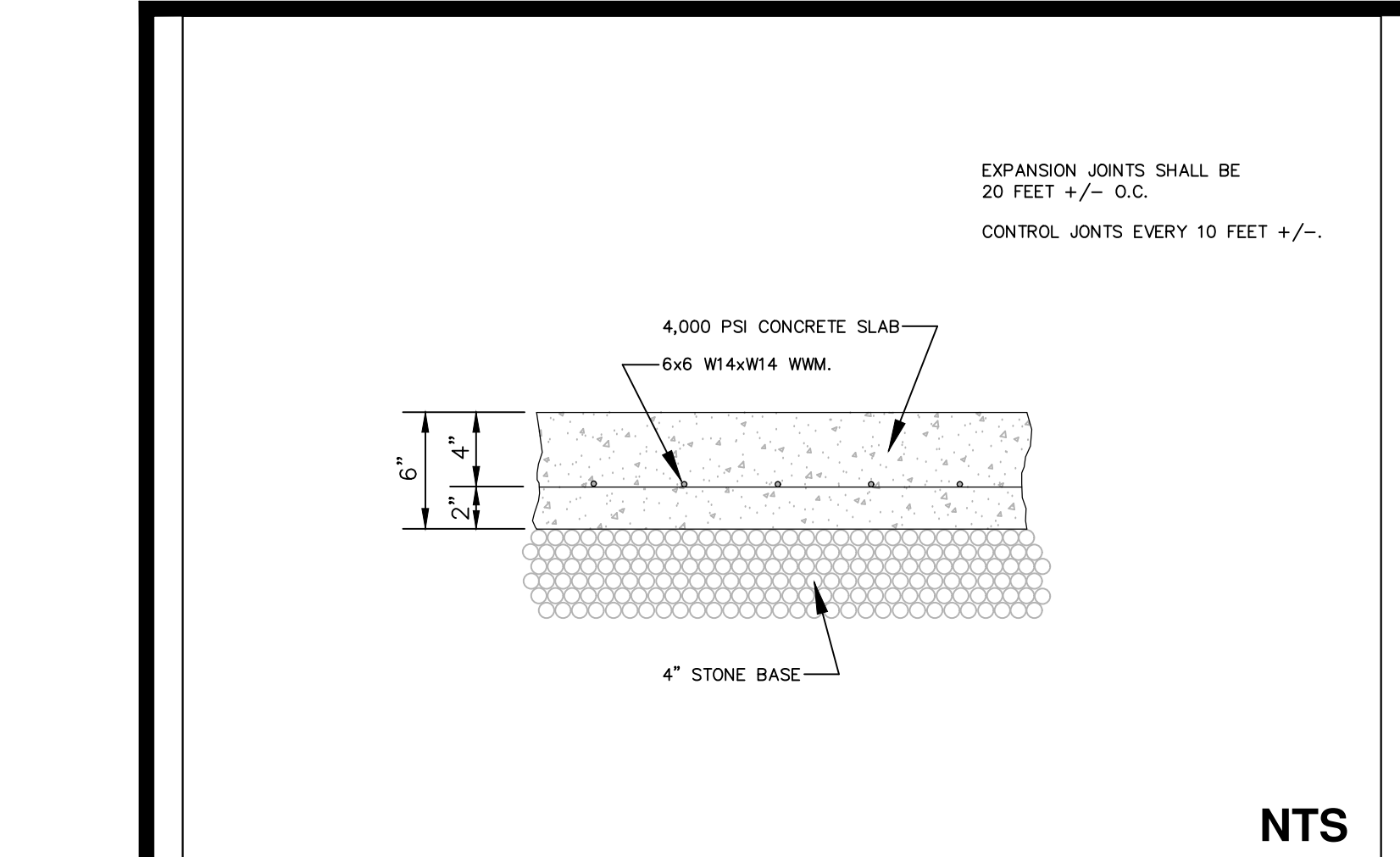
5 TEMPORARY SEEDING SPECIFICATIONS



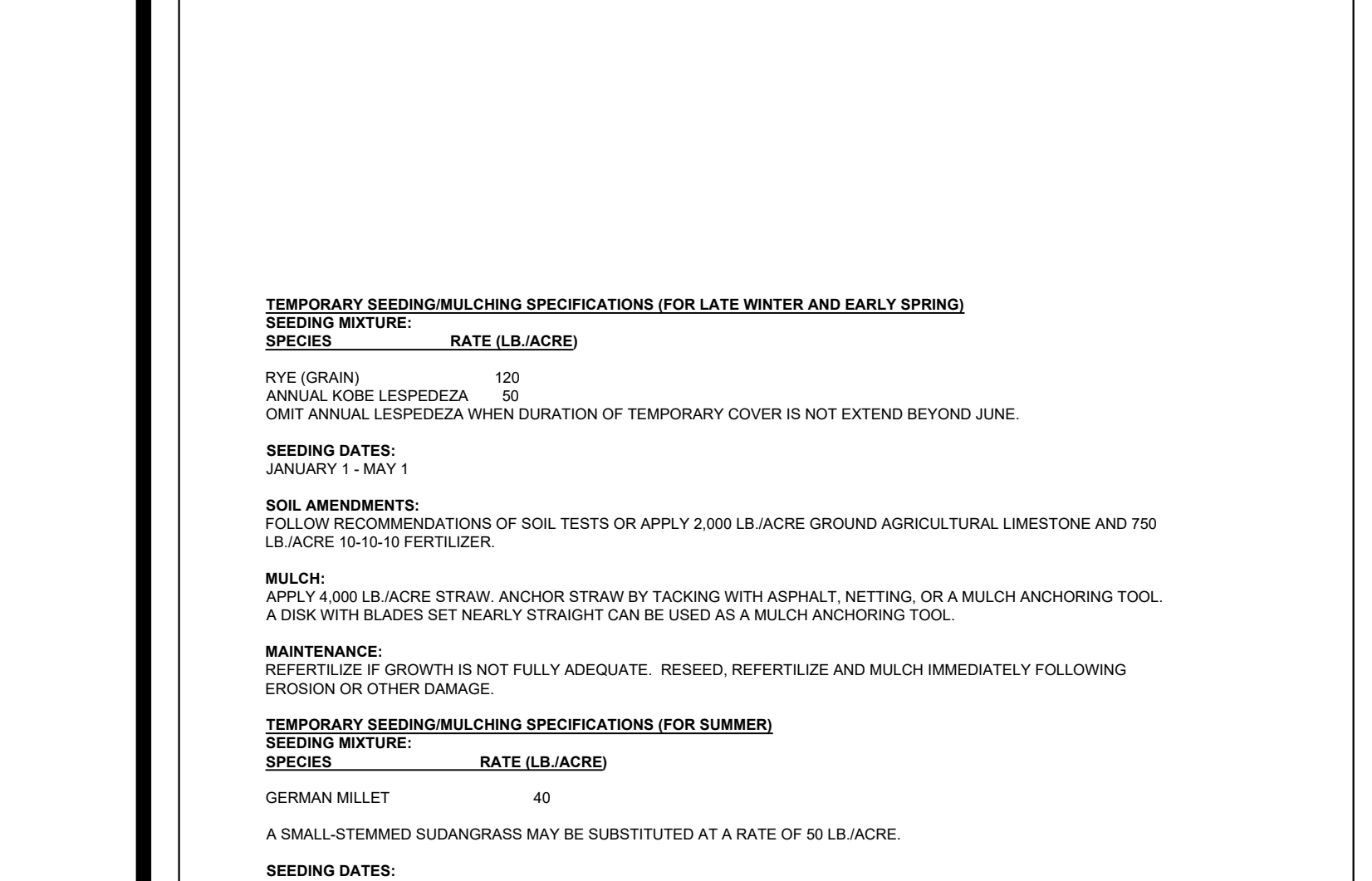
2 GENERAL EROSION AND SEDIMENT CONTROL NOTES



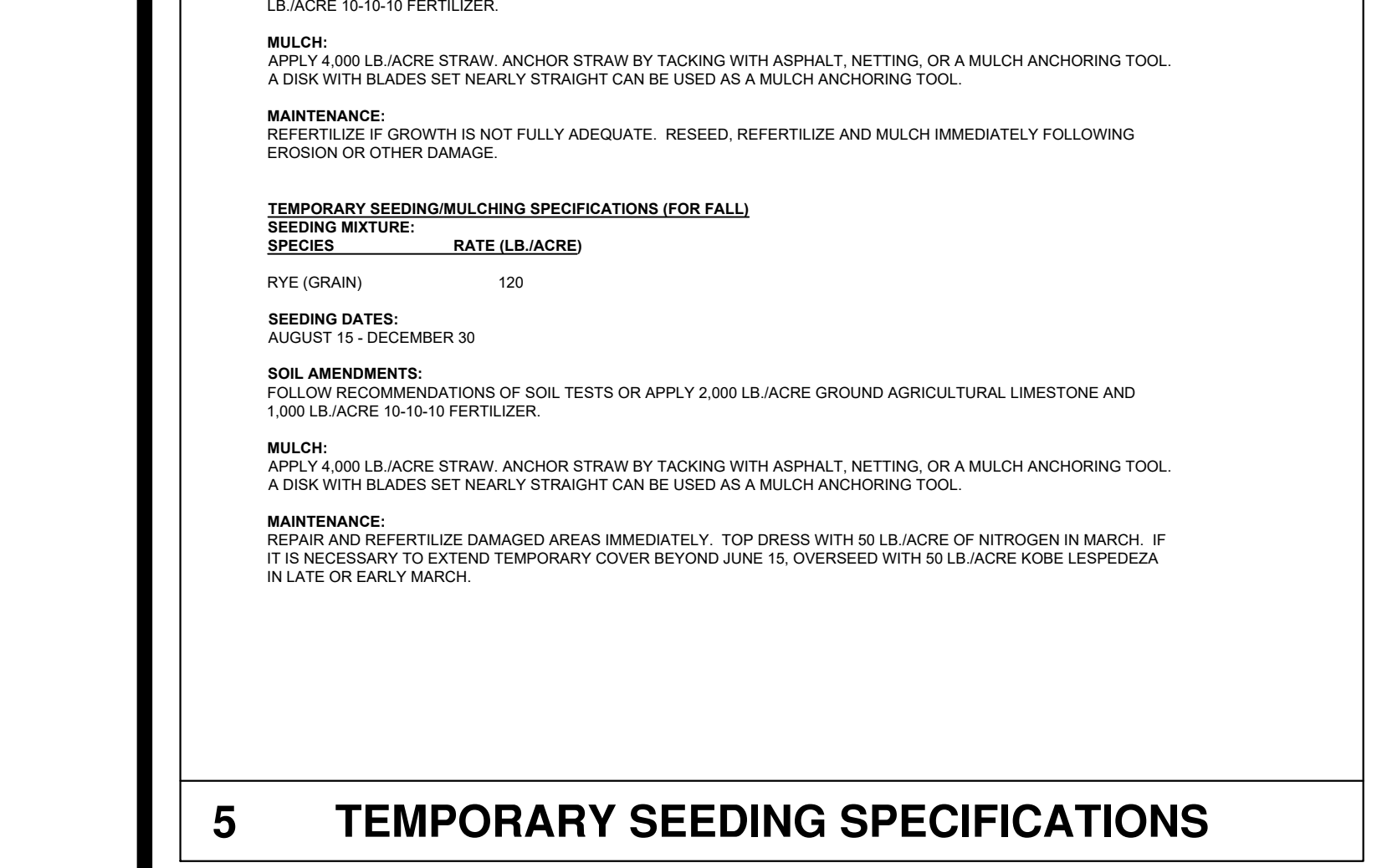
1 CONCRETE DRIVE PAVEMENT SECTION



6 PERMANENT SEEDING SPECIFICATIONS



8 CHECK DAM WITH WEIR



9 CONSTRUCTION SPECIFICATIONS



10 MAINTENANCE

I:\Brian Raynor\1942\Airport Road\Hangar II\CD18_30.dwg (9/18/25) 1:21:24 AM

