


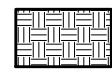


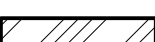



D:\CAVINESS AND CATES\Caviness and Cates\DUCKS LANDING\DUCKS LANDING PICNIC-MAIL SHELTER.dwg, 5/7/2025 12:40:49 PM, 1:1

LIST OF SYMBOLS					
SECTION SHEET			SECTION MARK		SLOPE UP PITCH
SECTION SHEET			DETAIL MARK		EARTH
		TITLE MARK		INSULATION	
		INTERIOR BEARING WALL		STANDARD WALL	

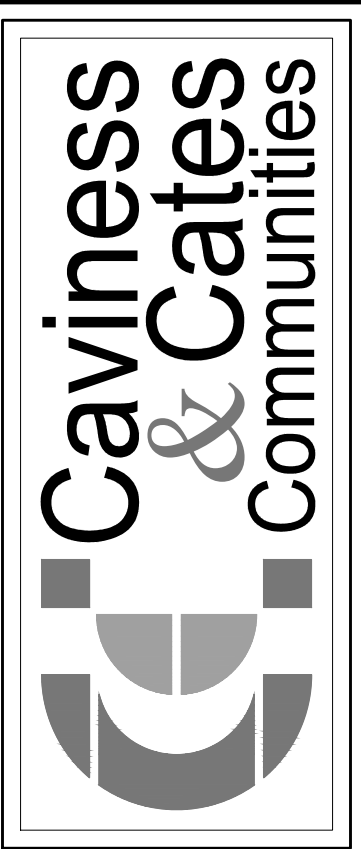
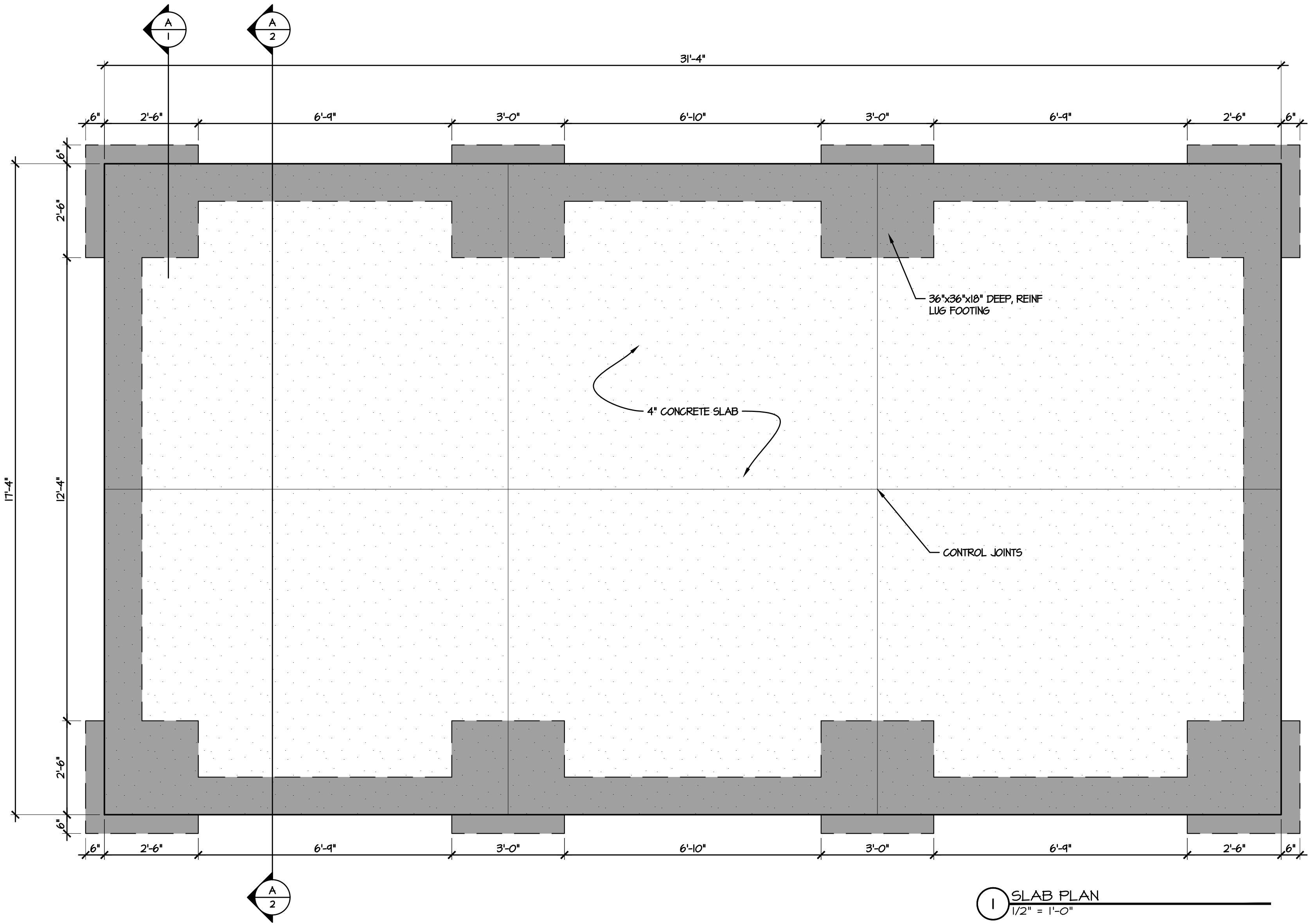
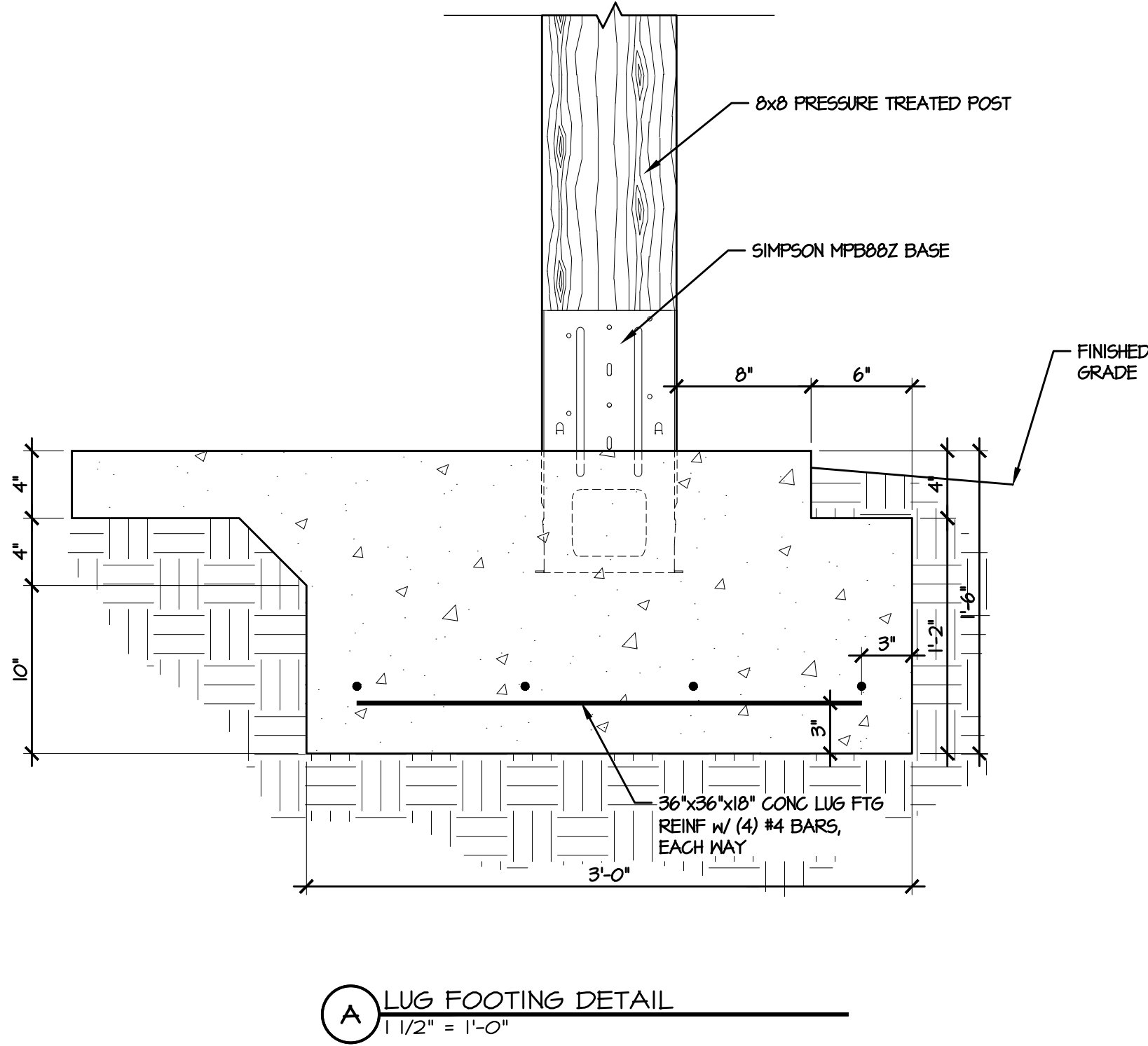
LIST OF ABBREVIATIONS									
ACCESS	ACCESS TO ATTIC OR GRAVEL SPACE	DN	DISH WASHER	POCK	POCKET DOOR	T.C.	TOP CHORD		
AFF	ABOVE FLOOR	EQ	EQUAL	PERF	PERFORATED	TOM	TOP OF WALL		
ASL	ABOVE SEA LEVEL	FDN	FOUNDATION	PL	PLATE	TRANS	TRANSOM		
BD	BOARD	FV	FOUNDATION VENT	PT	PRESSURE TREATED FOR EXPOSURE	TYP	TYPICAL		
BDRM	BEDROOM	GL	GLASS (DOOR)	PL	POINT LOAD (SOLID BLOCK)	UON	UNLESS OTHERWISE NOTED		
BM	BEAM	HB	HOSE BIB	R4S	ROD & SHELF (CLOSETS)	V.B.	VAPOR BARRIER		
CAB	CABINETS / CABINETRY	HDR	DOOR / WINDOW / OPENING HEADER	REF	REFRIGERATOR	VAN	VANITY		
C-J	CONTROL JOINT	HJ	WATER/ELECTRICAL HOOK UPS	REINF	REINFORCEMENT				
CL	CENTERLINE	HVAC	HEATING, VENTING & AIR CONDITION	RM	ROOM				
CMU	CONCRETE MASONRY UNIT	KWALL	KNEEWALL	SEGM	SEGMENTED				
CO	CLEAR OPENING	LVL	LAMINATED VENEER LUMBER	SHWR	SHOWER	W	WIDE		
COL	COLUMN	MANF	MANUFACTURED	SHLV(S)	SHELVE(S)	W/	WITH		
CONC	CONCRETE	MAS	MASONRY	SPEC(D)	SPECIFICATION / SPECIFIED	WP	WATER PROOF		
CSMT	CASEMENT	NC	NOT IN CONTRACT	SQ	SQUARE	WV	MAIN WATER VALVE SHUTOFF		
DBL	DOUBLE	OC	ON CENTER	SS	STAINLESS STEEL	*SP	NUMBER OF STUD POCKETS @ WINDOW/DOOR JAMB		
DIAM	DIAMETER	OPNG	OPENING	SST	SIMPSON STRONG-TIE OR EQUAL				
DH/SH	DOUBLE HUNG / SINGLE HUNG WINDOW	OPT	OPTIONAL	SUBFLR	SUB-FLOOR				
DN	DOWN			SYP	SOUTHERN YELLOW PINE				
DP	DEEP								

SUMMARY	
PROJECT INFO	
NAME OF PROJECT:	DUCKS LANDING - PICNIC SHELTER / MAIL SHELTER
PROPOSED USE:	RESIDENTIAL
CONTACT:	CAVINESS & CATES, INC
CODE COMPLIANCE:	2018 NC STATE RESIDENTIAL BUILDING CODE
MUNICIPALITY:	HARNETT COUNTY, NC
DESIGNER:	TODD TUCKER, AIBD, CPBD 910-366-2636
SPACE DATA, PICNIC:	SPACE DATA, MAIL:
COVERED AREA: 480 SF	COVERED AREA: 180 SF
OVERALL SHELTER HEIGHT 13'-0"	OVERALL SHELTER HEIGHT 11'-0"
DESIGN LOADS	
ROOF LOADS:	20 PSF LIVE, 20 PSF DEAD
WIND LOAD:	FOR ASCE 7-10, RISK CATEGORY II, EXPOSURE "B", 120 mph

Reviewed for Fire Code Compliance

Leslie Jackson

09/05/2025 8:21:04 AM



© 2023 Caviness & Cates

639 Executive Place
Suite 400
Fayetteville, NC 28305
Office: 910-481-0503
Sales: 910-240-4210
Fax: 910-481-0585



NATIONAL COUNCIL OF
FORTIFIED-WISE™
TODD TUCKER 34 - 156
PROFESSIONAL
910-824-1474

PLAN NAME/NUMBER:
DUCK'S LANDING

SHEET TITLE:
PICNIC SHELTER SLAB PLAN

PLAN NO:
DUCK

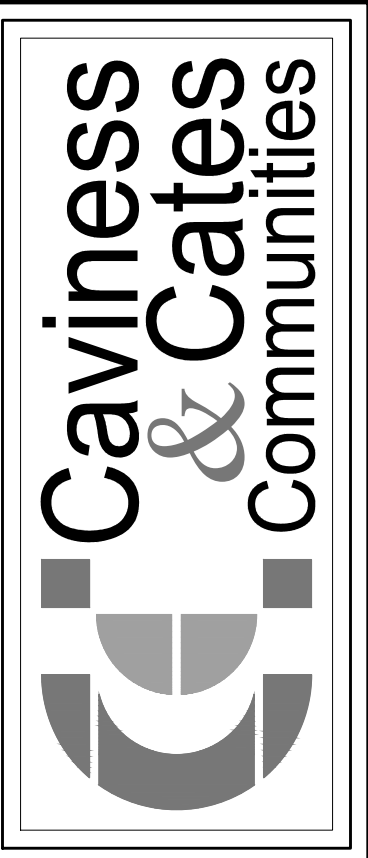
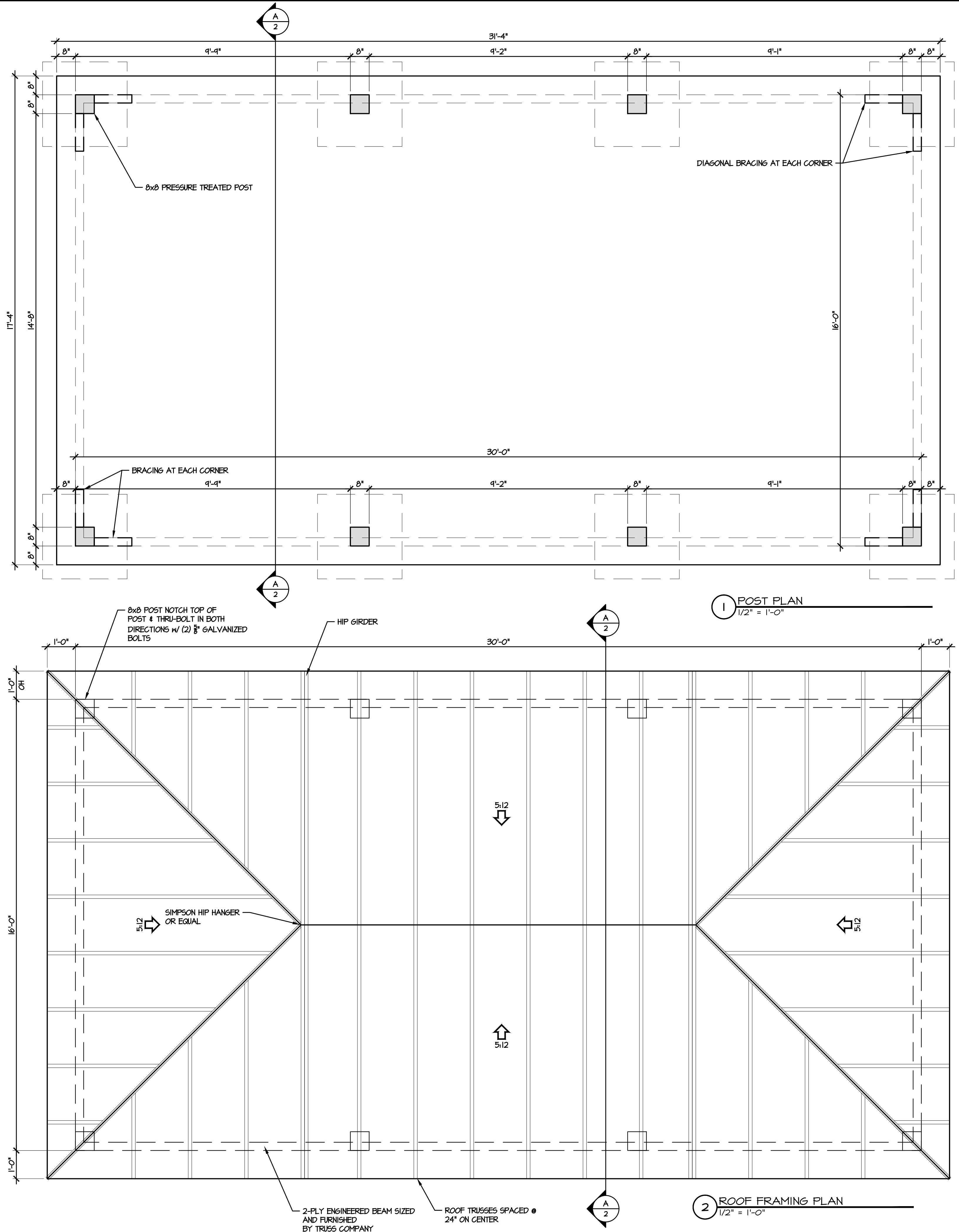
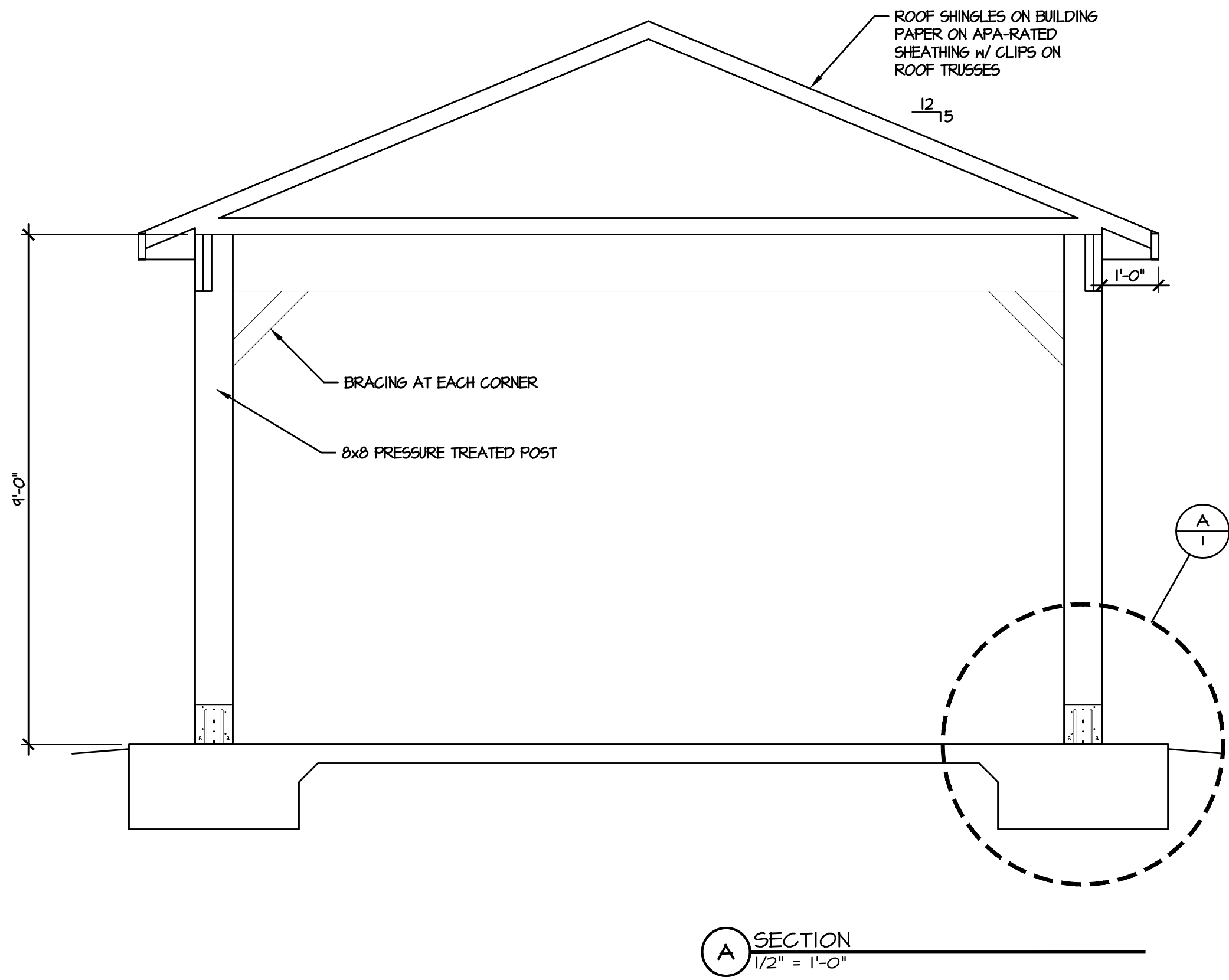
DATE:
MARCH 2025

REVISIONS:	

SHEET NO:

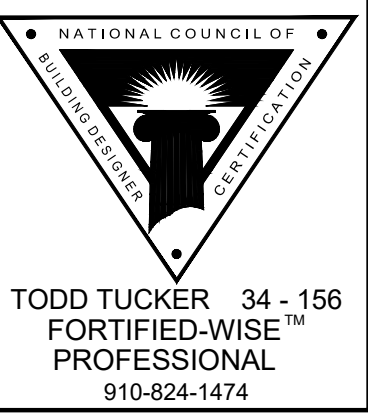
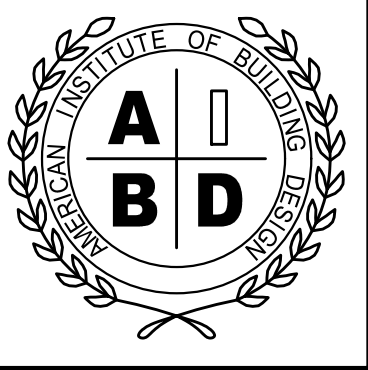
1

D:\CAVINESS AND CATES\Caviness and Cates\DUCK'S LANDING\DUCK'S LANDING PICNIC-MAIL SHELTER.dwg, 5/7/2025 12:40:49 PM, 1:1



© 2023 Caviness & Cates

639 Executive Place
Suite 400
Fayetteville, NC 28305
Office: 910-481-0503
Sales: 910-240-4210
Fax: 910-481-0585



PLAN NAME/NUMBER:
DUCK'S LANDING

SHEET TITLE:
PICNIC SHELTER PLANS / SECTION

PLAN NO:
DUCK

DATE:
MARCH 2025

REVISIONS:	

SHEET NO:

2