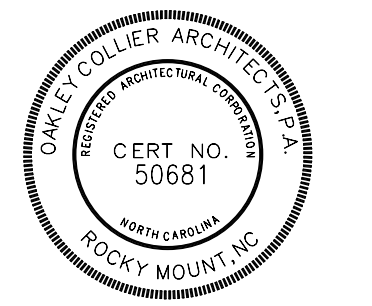


NEW CONSTRUCTION FOR: 5N2 FOOD PANTRY

17247 NC W.
SANFORD, NC 27332



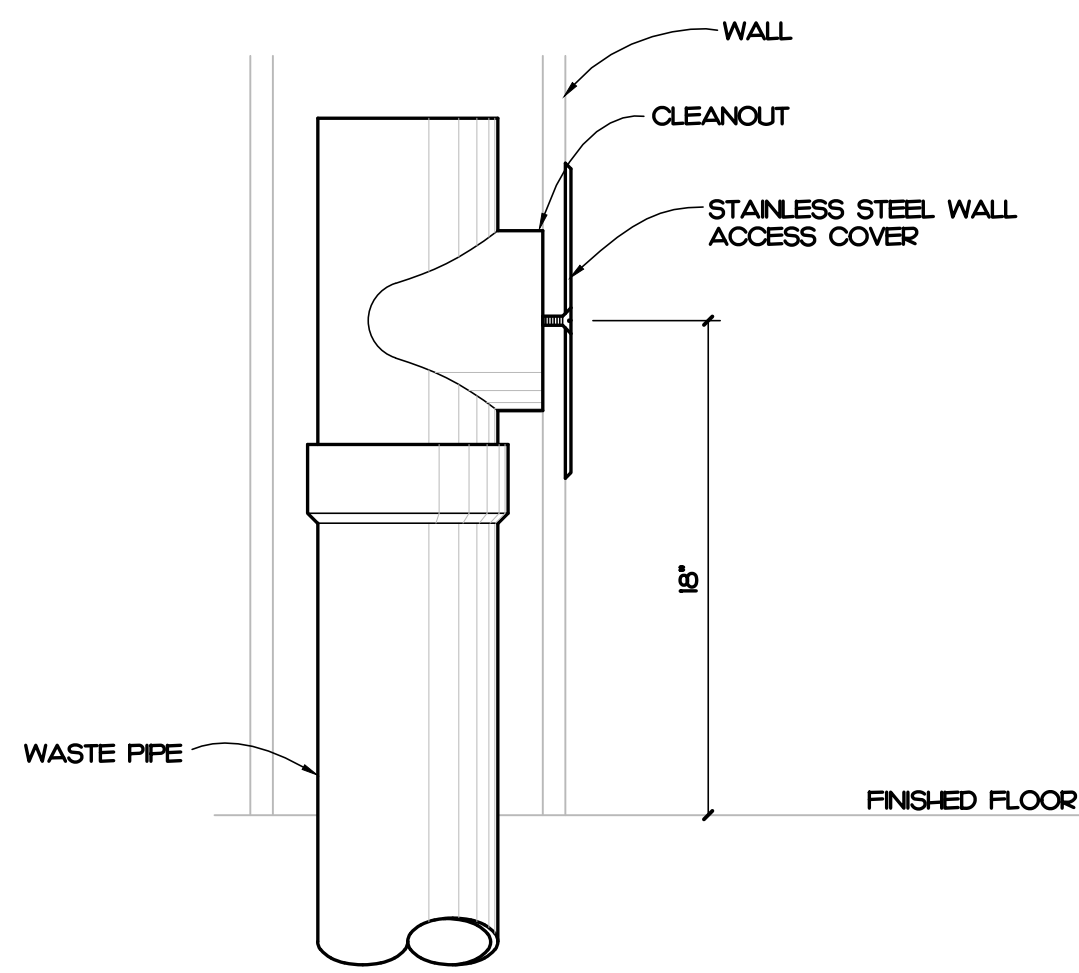
GENERAL NOTE:
Prior to construction start, Contractor shall verify & be responsible for all Dimensions.

Revisions	Description	Date
1	AHJ Response v1	1/5/2026
2	Plumbing Revisions	3/19/2026

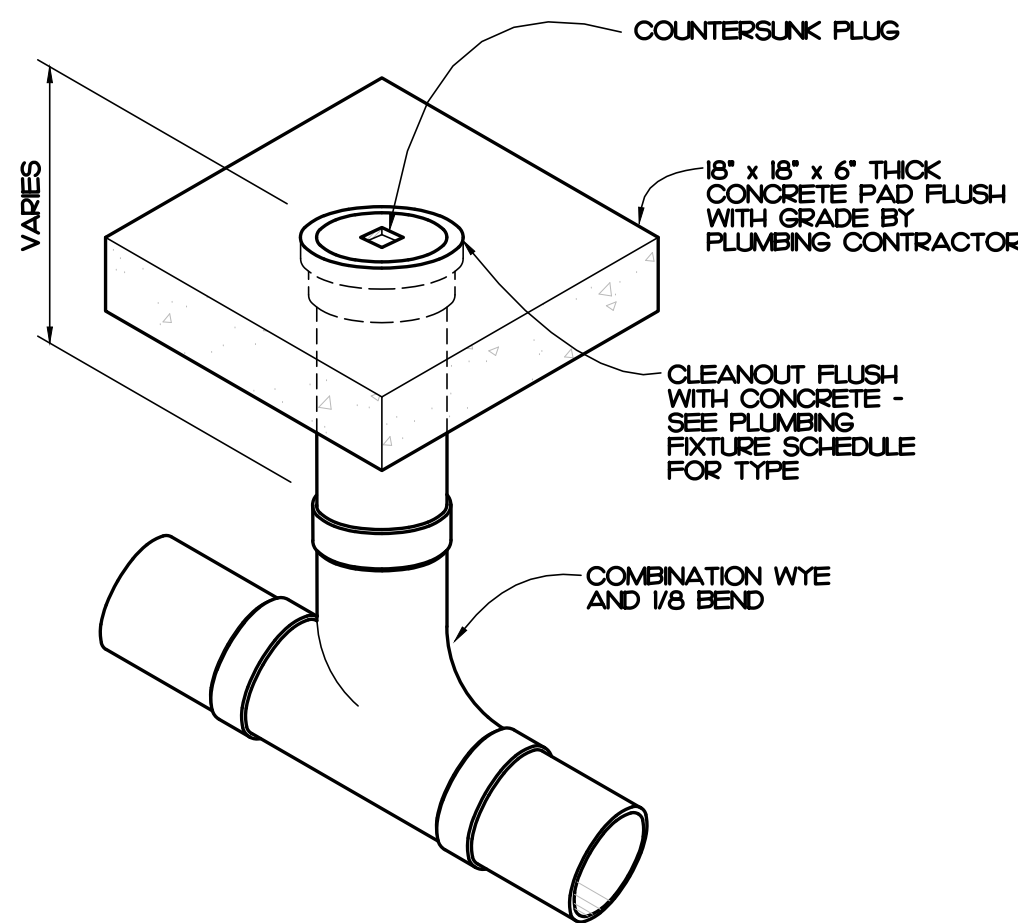
Date	Project No.
11/24/25	25003
Drawn By	Sheet No.
JK	GO.1
Checked By	
DG	
Sheet Title	
COVERSHEET	

ABBREVIATIONS

@ ACC	ACCUS AC	ACT	AC	AD	ADJ	AE	AFF	AFL	AHU	ALUM	ANOD	ANSI	ATTEN	AWP	BBT	BF	BFC	BL	BLDG	BLKG	BOT	BPG	CB	CEM	CG	CGI	CI	CI#	CJ	CL	CLG	CLR	CMU	CO	COL	CONC	CONSTR	CONTR	CORR	CPT	CPTT	CR	CRF	CSC	CSCI	CTB	CW	CWT	DFF	DIA	DISP	DN	DP	DR	DS	DTL	EDG	EES	EFC	EFS	EIP	EJ	ELEV	EN	EPT	EQ	ES	EST	EXP	EXT	EW	EW	EW	EW	FC	FD	FE	FEC	FF	FH	FLU	FOF	FOM	FT	FTG	FV	GA	GALV	GC	GCT	GEN	GFT	GL	GMT	GT	GWB	GYP	HB	HC	HDC	HDWD	HM	HORZ	HR	ID	IMP	INSTAL	INSUL	INT	INT	INV	JB	JB#	JT	L	LFT	LP	LST	LST	LVS	LVT	MATL	MAX	MB	MBL	MC	MCT	MECH	MFR	MFT	MIN	MO	MTB	MTD	MTL	MWM	MWT	N/A	NC	NOM	OC	OD	OPCI	OF	OF	OF	OP	OSC	OZ	P	PC	PERF	PFT	PV	PL	PL	P-LAM	P-LAM	P-LAM	P-LAM	PNT	PNT	PNT	PP	PR	PTB	PTD	PTD	PVC	PVC	Q	QT	QT	R	R&S	RB	RBT	RCP	RDL	RDL	RECF	REQD	RES	RM	RO	ROW	RSF	RTF	SAT	SAT	SCH	SCW	SCW	SDT	SP	SP	SP	SP	SS	SS	SSC	SSG	SSM	ST	ST&R	STD	SUSP	T&G	TB	TC	TCA	TELE	TEMP	TEXT	TFT	TFC	TOS	TP	TS	TS	TVB	TYP	UL	UL	UNO	VACT	VB	VCT	VERT	VIF	VWC	WI	WC	WD	WF	WT	WT	WWF	WWW	SSG	SSM	ST	ST&R	STD	SUSP	T&G	TB	TC	TCA	TELE	TEMP	TEXT	TFT	TFC	TOS	TP	TS	TS	TVB	TYP	UL	UL	UNO	VACT	VB	VCT	VERT	VIF	VWC	WI	WC	WD	WF	WT	WT	WWF	WWW	SSG	SSM	ST	ST&R	STD	SUSP	T&G	TB	TC	TCA	TELE	TEMP	TEXT	TFT	TFC	TOS	TP	TS	TS	TVB	TYP	UL	UL	UNO	VACT	VB	VCT	VERT	VIF	VWC	WI	WC	WD	WF	WT	WT	WWF	WWW	SSG	SSM	ST	ST&R	STD	SUSP	T&G	TB	TC	TCA	TELE	TEMP	TEXT	TFT	TFC	TOS	TP	TS	TS	TVB	TYP	UL	UL	UNO	VACT	VB	VCT	VERT	VIF	VWC	WI	WC	WD	WF	WT	WT	WWF	WWW	SSG	SSM	ST	ST&R	STD	SUSP	T&G	TB	TC	TCA	TELE	TEMP	TEXT	TFT	TFC	TOS	TP	TS	TS	TVB	TYP	UL	UL	UNO	VACT	VB	VCT	VERT	VIF	VWC	WI	WC	WD	WF	WT	WT	WWF	WWW	SSG	SSM	ST	ST&R	STD	SUSP	T&G	TB	TC	TCA	TELE	TEMP	TEXT	TFT	TFC	TOS	TP	TS	TS	TVB	TYP	UL	UL	UNO	VACT	VB	VCT	VERT	VIF	VWC	WI	WC	WD	WF	WT	WT	WWF	WWW	SSG	SSM	ST	ST&R	STD	SUSP	T&G	TB	TC	TCA	TELE	TEMP	TEXT	TFT	TFC	TOS	TP	TS	TS	TVB	TYP	UL	UL	UNO	VACT	VB	VCT	VERT	VIF	VWC	WI	WC	WD	WF	WT	WT	WWF	WWW	SSG	SSM	ST	ST&R	STD	SUSP	T&G	TB	TC	TCA	TELE	TEMP	TEXT	TFT	TFC	TOS	TP	TS	TS	TVB	TYP	UL	UL	UNO	VACT	VB	VCT	VERT	VIF	VWC	WI	WC	WD	WF	WT	WT	WWF	WWW	SSG	SSM	ST	ST&R	STD	SUSP	T&G	TB	TC	TCA	TELE	TEMP	TEXT	TFT	TFC	TOS	TP	TS	TS	TVB	TYP	UL	UL	UNO	VACT	VB	VCT	VERT	VIF	VWC	WI	WC	WD	WF	WT	WT	WWF	WWW	SSG	SSM	ST	ST&R	STD	SUSP	T&G	TB	TC	TCA	TELE	TEMP	TEXT	TFT	TFC	TOS	TP	TS	TS	TVB	TYP	UL	UL	UNO	VACT	VB	VCT	VERT	VIF	VWC	WI	WC	WD	WF	WT	WT	WWF	WWW	SSG	SSM	ST	ST&R	STD	SUSP	T&G	TB	TC	TCA	TELE	TEMP	TEXT	TFT	TFC	TOS	TP	TS	TS	TVB	TYP	UL	UL	UNO	VACT	VB	VCT	VERT	VIF	VWC	WI	WC	WD	WF	WT	WT	WWF	WWW	SSG	SSM	ST	ST&R	STD	SUSP	T&G	TB	TC	TCA	TELE	TEMP	TEXT	TFT	TFC	TOS	TP	TS	TS	TVB	TYP	UL	UL	UNO	VACT	VB	VCT	VERT	VIF	VWC	WI	WC	WD	WF	WT	WT	WWF	WWW	SSG	SSM	ST	ST&R	STD	SUSP	T&G	TB	TC	TCA	TELE	TEMP	TEXT	TFT	TFC	TOS	TP	TS	TS	TVB	TYP	UL	UL	UNO	VACT	VB	VCT	VERT	VIF	VWC	WI	WC	WD	WF	WT	WT	WWF	WWW	SSG	SSM	ST	ST&R	STD	SUSP	T&G	TB	TC	TCA	TELE	TEMP	TEXT	TFT	TFC	TOS	TP	TS	TS	TVB	TYP	UL	UL	UNO	VACT	VB	VCT	VERT	VIF	VWC	WI	WC	WD	WF	WT	WT	WWF	WWW	SSG	SSM	ST	ST&R	STD	SUSP	T&G	TB	TC	TCA	TELE	TEMP	TEXT	TFT	TFC	TOS	TP	TS	TS	TVB	TYP	UL	UL	UNO	VACT	VB	VCT	VERT	VIF	VWC	WI	WC	WD	WF	WT	WT	WWF	WWW	SSG	SSM	ST	ST&R	STD	SUSP	T&G	TB	TC	TCA	TELE	TEMP	TEXT	TFT	TFC	TOS	TP	TS	TS	TVB	TYP	UL	UL	UNO	VACT	VB	VCT	VERT	VIF	VWC	WI	WC	WD	WF	WT	WT	WWF	WWW	SSG	SSM	ST	ST&R	STD	SUSP	T&G	TB	TC	TCA	TELE	TEMP	TEXT	TFT	TFC	TOS	TP	TS	TS	TVB	TYP	UL	UL	UNO	VACT	VB	VCT	VERT	VIF	VWC	WI	WC	WD	WF	WT	WT	WWF	WWW	SSG	SSM	ST	ST&R	STD	SUSP	T&G	TB	TC	TCA	TELE	TEMP	TEXT	TFT	TFC	TOS	TP	TS	TS	TVB	TYP	UL	UL	UNO	VACT	VB	VCT	VERT	VIF	VWC	WI	WC	WD	WF	WT	WT	WWF	WWW	SSG	SSM	ST	ST&R	STD	SUSP	T&G	TB	TC	TCA	TELE	TEMP	TEXT	TFT	TFC	TOS	TP	TS	TS	TVB	TYP	UL	UL	UNO	VACT	VB	VCT	VERT	VIF	VWC	WI	WC	WD	WF	WT	WT	WWF	WWW	SSG	SSM	ST	ST&R	STD	SUSP	T&G	TB	TC	TCA	TELE	TEMP	TEXT	TFT	TFC	TOS	TP	TS	TS	TVB	TYP	UL	UL	UNO	VACT	VB	VCT	VERT	VIF	VWC	WI	WC	WD	WF	WT	WT	WWF	WWW	SSG	SSM	ST	ST&R	STD	SUSP	T&G	TB	TC	TCA	TELE	TEMP	TEXT	TFT	TFC	TOS	TP	TS	TS	TVB	TYP	UL	UL	UNO	VACT	VB	VCT	VERT	VIF	VWC	WI	WC	WD	WF	WT	WT	WWF	WWW	SSG	SSM	ST	ST&R	STD	SUSP	T&G	TB	TC	TCA	TELE	TEMP	TEXT	TFT	TFC	TOS	TP	TS	TS	TVB	TYP	UL	UL	UNO	VACT	VB	VCT	VERT	VIF	VWC	WI	WC	WD	WF	WT	WT	WWF	WWW	SSG	SSM	ST	ST&R	STD	SUSP	T&G	TB	TC	TCA	TELE	TEMP	TEXT	TFT	TFC	TOS	TP	TS	TS	TVB	TYP	UL	UL	UNO	VACT	VB	VCT	VERT	VIF	VWC	WI	WC	WD	WF	WT	WT	WWF	WWW	SSG	SSM	ST	ST&R	STD	SUSP	T&G	TB	TC	TCA	TELE	TEMP	TEXT	TFT	TFC	TOS	TP	TS	TS	TVB	TYP	UL	UL	UNO	VACT	VB	VCT	VERT	VIF	VWC	WI	WC	WD	WF	WT	WT	WWF	WWW	SSG	SSM	ST	ST&R	STD	SUSP	T&G	TB	TC	TCA	TELE	TEMP	TEXT	TFT	TFC	TOS	TP	TS	TS	TVB	TYP	UL	UL	UNO	VACT	VB	VCT	VERT	VIF	VWC	WI	WC	WD	WF	WT	WT	WWF	WWW	SSG	SSM	ST	ST&R	STD	SUSP	T&G	TB	TC	TCA	TELE	TEMP	TEXT	TFT	TFC	TOS	TP	TS	TS	TVB	TYP	UL	UL	UNO	VACT	VB	VCT	VERT	VIF	VWC	WI	WC	WD	WF	WT	WT	WWF	WWW	SSG	SSM	ST	ST&R	STD	SUSP	T&G	TB	TC	TCA	TELE	TEMP	TEXT	TFT	TFC	TOS	TP	TS	TS	TVB	TYP	UL	UL	UNO	VACT	VB	VCT	VERT	VIF	VWC	WI	WC	WD	WF	WT	WT	WWF	WWW	SSG	SSM	ST	ST&R	STD	SUSP	T&G	TB	TC	TCA	TELE	TEMP	TEXT	TFT	TFC	TOS	TP	TS	TS	TVB	TYP	UL	UL	UNO	VACT	VB	VCT	VERT	VIF	VWC	WI	WC	WD	WF	WT	WT	WWF	WWW	SSG	SSM	ST	ST&R	STD	SUSP	T&G	TB	TC	TCA	TELE	TEMP	TEXT	TFT	TFC	TOS	TP	TS	TS	TVB	TYP	UL	UL	UNO	VACT	VB	VCT	VERT	VIF	VWC	WI	WC	WD	WF	WT	WT	WWF	WWW	SSG	SSM	ST	ST&R	STD	SUSP	T&G	TB	TC	TCA	TELE	TEMP	TEXT	TFT	TFC	TOS	TP	TS	TS	TVB	TYP	UL	UL	UNO	VACT	VB	VCT	VERT	VIF	VWC	WI	WC	WD	WF	WT	WT	WWF	WWW	SSG	SSM	ST	ST&R	STD	SUSP	T&G	TB	TC	TCA	TELE	TEMP	TEXT	TFT	TFC	TOS	TP	TS	TS	TVB	TYP	UL	UL	UNO	VACT	VB	VCT	VERT	VIF	VWC	WI	WC	WD	WF	WT	WT	WWF	WWW	SSG	SSM	ST	ST&R	STD	SUSP	T&G	TB	TC	TCA	TELE	TEMP	TEXT	TFT	TFC	TOS	TP	TS	TS	TVB	TYP	UL	UL	UNO	VACT	VB	VCT	VERT	VIF	VWC	WI	WC	WD	WF	WT	WT	WWF	WWW	SSG	SSM	ST	ST&R	STD	SUSP	T&G	TB	TC	TCA	TELE	TEMP	TEXT	TFT	TFC	TOS	TP	TS	TS	TVB	TYP	UL	UL	UNO	VACT	VB	VCT	VERT	VIF	VWC	WI	WC	WD	WF	WT	WT	WWF	WWW	SSG	SSM	ST	ST&R	STD	SUSP	T&G	TB	TC	TCA	TELE	TEMP	TEXT	TFT	TFC	TOS	TP	TS	TS	TVB	TYP	UL	UL	UNO	VACT	VB	VCT	VERT	VIF	VWC	WI	WC	WD	WF	WT	WT	WWF	WWW	SSG	SSM	ST	ST&R	STD	SUSP	T&G	TB	TC	TCA	TELE	TEMP	TEXT	TFT	TFC	TOS	TP	TS	TS	TVB	TYP	UL	UL	UNO	VACT	VB	VCT	VERT	VIF	VWC	WI	WC	WD	WF	WT	WT	WWF	WWW	SSG	SSM	ST	ST&R	STD	SUSP	T&G	TB	TC	TCA	TELE	TEMP	TEXT	TFT	TFC	TOS	TP	TS	TS	TVB	TYP	UL	UL	UNO	VACT	VB	VCT	VERT	VIF	VWC	WI	
-------	----------	-----	----	----	-----	----	-----	-----	-----	------	------	------	-------	-----	-----	----	-----	----	------	------	-----	-----	----	-----	----	-----	----	-----	----	----	-----	-----	-----	----	-----	------	--------	-------	------	-----	------	----	-----	-----	------	-----	----	-----	-----	-----	------	----	----	----	----	-----	-----	-----	-----	-----	-----	----	------	----	-----	----	----	-----	-----	-----	----	----	----	----	----	----	----	-----	----	----	-----	-----	-----	----	-----	----	----	------	----	-----	-----	-----	----	-----	----	-----	-----	----	----	-----	------	----	------	----	----	-----	--------	-------	-----	-----	-----	----	-----	----	---	-----	----	-----	-----	-----	-----	------	-----	----	-----	----	-----	------	-----	-----	-----	----	-----	-----	-----	-----	-----	-----	----	-----	----	----	------	----	----	----	----	-----	----	---	----	------	-----	----	----	----	-------	-------	-------	-------	-----	-----	-----	----	----	-----	-----	-----	-----	-----	---	----	----	---	-----	----	-----	-----	-----	-----	------	------	-----	----	----	-----	-----	-----	-----	-----	-----	-----	-----	-----	----	----	----	----	----	----	-----	-----	-----	----	------	-----	------	-----	----	----	-----	------	------	------	-----	-----	-----	----	----	----	-----	-----	----	----	-----	------	----	-----	------	-----	-----	----	----	----	----	----	----	-----	-----	-----	-----	----	------	-----	------	-----	----	----	-----	------	------	------	-----	-----	-----	----	----	----	-----	-----	----	----	-----	------	----	-----	------	-----	-----	----	----	----	----	----	----	-----	-----	-----	-----	----	------	-----	------	-----	----	----	-----	------	------	------	-----	-----	-----	----	----	----	-----	-----	----	----	-----	------	----	-----	------	-----	-----	----	----	----	----	----	----	-----	-----	-----	-----	----	------	-----	------	-----	----	----	-----	------	------	------	-----	-----	-----	----	----	----	-----	-----	----	----	-----	------	----	-----	------	-----	-----	----	----	----	----	----	----	-----	-----	-----	-----	----	------	-----	------	-----	----	----	-----	------	------	------	-----	-----	-----	----	----	----	-----	-----	----	----	-----	------	----	-----	------	-----	-----	----	----	----	----	----	----	-----	-----	-----	-----	----	------	-----	------	-----	----	----	-----	------	------	------	-----	-----	-----	----	----	----	-----	-----	----	----	-----	------	----	-----	------	-----	-----	----	----	----	----	----	----	-----	-----	-----	-----	----	------	-----	------	-----	----	----	-----	------	------	------	-----	-----	-----	----	----	----	-----	-----	----	----	-----	------	----	-----	------	-----	-----	----	----	----	----	----	----	-----	-----	-----	-----	----	------	-----	------	-----	----	----	-----	------	------	------	-----	-----	-----	----	----	----	-----	-----	----	----	-----	------	----	-----	------	-----	-----	----	----	----	----	----	----	-----	-----	-----	-----	----	------	-----	------	-----	----	----	-----	------	------	------	-----	-----	-----	----	----	----	-----	-----	----	----	-----	------	----	-----	------	-----	-----	----	----	----	----	----	----	-----	-----	-----	-----	----	------	-----	------	-----	----	----	-----	------	------	------	-----	-----	-----	----	----	----	-----	-----	----	----	-----	------	----	-----	------	-----	-----	----	----	----	----	----	----	-----	-----	-----	-----	----	------	-----	------	-----	----	----	-----	------	------	------	-----	-----	-----	----	----	----	-----	-----	----	----	-----	------	----	-----	------	-----	-----	----	----	----	----	----	----	-----	-----	-----	-----	----	------	-----	------	-----	----	----	-----	------	------	------	-----	-----	-----	----	----	----	-----	-----	----	----	-----	------	----	-----	------	-----	-----	----	----	----	----	----	----	-----	-----	-----	-----	----	------	-----	------	-----	----	----	-----	------	------	------	-----	-----	-----	----	----	----	-----	-----	----	----	-----	------	----	-----	------	-----	-----	----	----	----	----	----	----	-----	-----	-----	-----	----	------	-----	------	-----	----	----	-----	------	------	------	-----	-----	-----	----	----	----	-----	-----	----	----	-----	------	----	-----	------	-----	-----	----	----	----	----	----	----	-----	-----	-----	-----	----	------	-----	------	-----	----	----	-----	------	------	------	-----	-----	-----	----	----	----	-----	-----	----	----	-----	------	----	-----	------	-----	-----	----	----	----	----	----	----	-----	-----	-----	-----	----	------	-----	------	-----	----	----	-----	------	------	------	-----	-----	-----	----	----	----	-----	-----	----	----	-----	------	----	-----	------	-----	-----	----	----	----	----	----	----	-----	-----	-----	-----	----	------	-----	------	-----	----	----	-----	------	------	------	-----	-----	-----	----	----	----	-----	-----	----	----	-----	------	----	-----	------	-----	-----	----	----	----	----	----	----	-----	-----	-----	-----	----	------	-----	------	-----	----	----	-----	------	------	------	-----	-----	-----	----	----	----	-----	-----	----	----	-----	------	----	-----	------	-----	-----	----	----	----	----	----	----	-----	-----	-----	-----	----	------	-----	------	-----	----	----	-----	------	------	------	-----	-----	-----	----	----	----	-----	-----	----	----	-----	------	----	-----	------	-----	-----	----	----	----	----	----	----	-----	-----	-----	-----	----	------	-----	------	-----	----	----	-----	------	------	------	-----	-----	-----	----	----	----	-----	-----	----	----	-----	------	----	-----	------	-----	-----	----	----	----	----	----	----	-----	-----	-----	-----	----	------	-----	------	-----	----	----	-----	------	------	------	-----	-----	-----	----	----	----	-----	-----	----	----	-----	------	----	-----	------	-----	-----	----	----	----	----	----	----	-----	-----	-----	-----	----	------	-----	------	-----	----	----	-----	------	------	------	-----	-----	-----	----	----	----	-----	-----	----	----	-----	------	----	-----	------	-----	-----	----	----	----	----	----	----	-----	-----	-----	-----	----	------	-----	------	-----	----	----	-----	------	------	------	-----	-----	-----	----	----	----	-----	-----	----	----	-----	------	----	-----	------	-----	-----	----	----	----	----	----	----	-----	-----	-----	-----	----	------	-----	------	-----	----	----	-----	------	------	------	-----	-----	-----	----	----	----	-----	-----	----	----	-----	------	----	-----	------	-----	-----	----	----	----	----	----	----	-----	-----	-----	-----	----	------	-----	------	-----	----	----	-----	------	------	------	-----	-----	-----	----	----	----	-----	-----	----	----	-----	------	----	-----	------	-----	-----	----	----	----	----	----	----	-----	-----	-----	-----	----	------	-----	------	-----	----	----	-----	------	------	------	-----	-----	-----	----	----	----	-----	-----	----	----	-----	------	----	-----	------	-----	-----	----	----	----	----	----	----	-----	-----	-----	-----	----	------	-----	------	-----	----	----	-----	------	------	------	-----	-----	-----	----	----	----	-----	-----	----	----	-----	------	----	-----	------	-----	-----	----	----	----	----	----	----	-----	-----	-----	-----	----	------	-----	------	-----	----	----	-----	------	------	------	-----	-----	-----	----	----	----	-----	-----	----	----	-----	------	----	-----	------	-----	-----	----	----	----	----	----	----	-----	-----	-----	-----	----	------	-----	------	-----	----	----	-----	------	------	------	-----	-----	-----	----	----	----	-----	-----	----	----	-----	------	----	-----	------	-----	-----	----	----	----	----	----	----	-----	-----	-----	-----	----	------	-----	------	-----	----	----	-----	------	------	------	-----	-----	-----	----	----	----	-----	-----	----	----	-----	------	----	-----	------	-----	-----	----	----	----	----	----	----	-----	-----	-----	-----	----	------	-----	------	-----	----	----	-----	------	------	------	-----	-----	-----	----	----	----	-----	-----	----	----	-----	------	----	-----	------	-----	-----	----	----	----	----	----	----	-----	-----	-----	-----	----	------	-----	------	-----	----	----	-----	------	------	------	-----	-----	-----	----	----	----	-----	-----	----	----	-----	------	----	-----	------	-----	-----	----	----	----	----	----	----	-----	-----	-----	-----	----	------	-----	------	-----	----	----	-----	------	------	------	-----	-----	-----	----	----	----	-----	-----	----	----	-----	------	----	-----	------	-----	-----	----	----	----	----	----	----	-----	-----	-----	-----	----	------	-----	------	-----	----	----	-----	------	------	------	-----	-----	-----	----	----	----	-----	-----	----	----	-----	------	----	-----	------	-----	-----	----	----	----	----	----	----	-----	-----	-----	-----	----	------	-----	------	-----	----	----	-----	------	------	------	-----	-----	-----	----	----	----	-----	-----	----	----	-----	------	----	-----	------	-----	-----	----	----	----	----	----	----	-----	-----	-----	-----	----	------	-----	------	-----	----	----	-----	------	------	------	-----	-----	-----	----	----	----	-----	-----	----	----	-----	------	----	-----	------	-----	-----	----	--

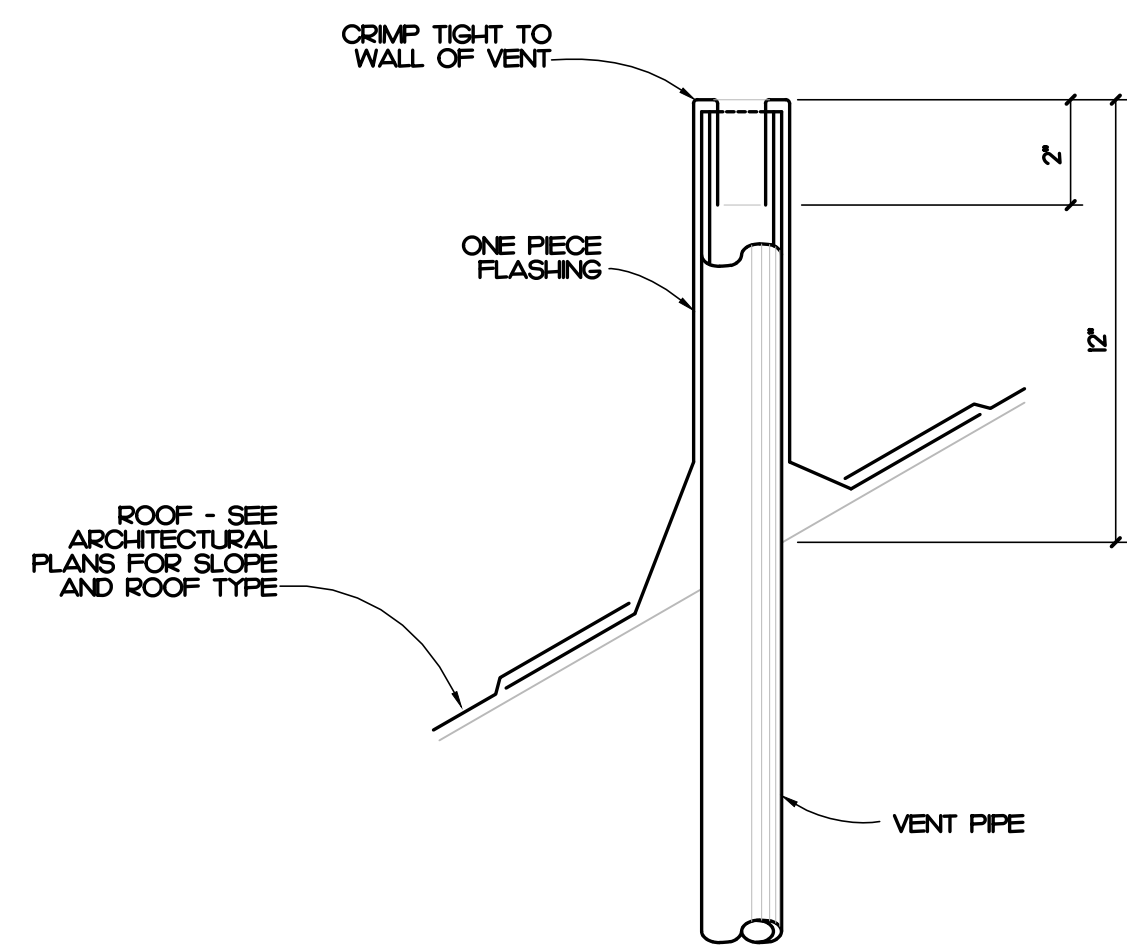


1 WALL CLEANOUT DETAIL
P0.1 NOT TO SCALE



NOTE: SEE SITE AND/OR UTILITY PLAN FOR LOCATION AND FINISH GRADE ELEVATION

2 FLOOR CLEANOUT DETAIL
P0.1 NOT TO SCALE



3 VENT THROUGH ROOF DETAIL
P0.1 NOT TO SCALE

PLUMBING FIXTURE SCHEDULE

SYMBOL / IMAGE	DESCRIPTION	3 - EQUALS						PIPING CONNECTIONS		
		MANUFACTURER	MODEL NUMBER	MANUFACTURER	MODEL NUMBER	MANUFACTURER	MODEL NUMBER	COLD WATER	HOT WATER	SANITARY SEWER
CO-1	WALL CLEANOUT	ZURN	CO-243-PVC	MFAB		JR SMITH				SEE PLUMB DRAWINGS
	ACCESS COVER	ZURN	CO-2530-SS	MFAB		JR SMITH				SEE PLUMB DRAWINGS
	PVC CLEANOUT BODY AND PLUG TO BE GAS AND WATER TIGHT. PLUG TO HAVE A BRASS THREADED INSERT TO RECEIVE SECURING SCREW FOR STAINLESS STEEL ROUND ACCESS COVER.									
CO-2	EXTERIOR CLEANOUT	ZURN	Z-1449-EP	WATTS	CO-380-34B	JR SMITH	4283	-	-	SEE PLUMB DRAWINGS
	CLEANOUT FERRULE WITH CAST IRON BODY, WITH GAS AND WATERTIGHT BRONZE PLUG, MOUNT IN CONCRETE.									
CO-3	FLOOR CLEANOUT	ZURN	ZH-400	WATTS	CO-200-RX	JR SMITH	4183	-	-	SEE PLUMB DRAWINGS
	ADJUSTABLE FLOOR CLEANOUT, CAST IRON BODY, WITH GAS AND WATERTIGHT ABS TAPERED THREAD PLUG, AND ROUND SECURE HEAVY DUTY TOP, ADJUSTABLE TO FINISHED FLOOR.									
FD-1	FLOOR DRAIN	ZURN	ZM4ES	WATTS	FD-100-M	MFAB	FR000-1	1/2"	-	3"
	FLOOR DRAIN TO HAVE A 3" WASTE BOTTOM OUTLET, CAST IRON BODY WITH ADJUSTABLE COLLAR, POLISHED 6" x 6" NICKEL BRONZE SQUARE HEELPROOF STRAINER, AND 1/2" TRAP PRIMER CONNECTION.									
FS-1	FLOOR SINK	ZURN	ZN904-3-33	WATTS	FS-740-H75	MFAB	FS730-75	-	-	3"
	12" x 12" x 8" DEEP CAST IRON BODY AND SQUARE SLOTTED MEDIUM DUTY 3/4" GRATE, AND ANTI-SPLASH INTERIOR BOTTOM DOME STRAINER.									
HH	ANTIFREEZE HOSE BIBB	WOODFORD	65	WATTS	HY-420	MFAB	MHY-5	3/4"	-	-
	ANTIFREEZE HOSE BIBB SHALL HAVE AUTOMATIC DRAINING WITH ANTI-SIPHON VACUUM BREAKER. 3/4" INLET AND OUTLET. EXTERIOR FINISH TO BE CHROME. PROVIDE WITH LOOSE TEE KEY FOR EACH HOSE BIBB. MOUNT 12" ABOVE FINISHED GRADE.									
H-2	WALL HYDRANT	ZURN	Z-1325	WATTS	HY-700	MFAB	MHY-45	3/4"	3/4"	-
	ANTIFREEZE SELF DRAINING, HOT AND COLD HOSE BIBB WITH ANTI SIPHON INTEGRAL VACUUM BREAKER, HEAVY DUTY CHROME PLATED BRONZE HEAD CASTING, CHROME PLATED FACE PLATE, AND NICKEL BRONZE BOX WITH HINGED LOCKING COVER.									
H-3	HOSE BIBB	WOODFORD	24	MFAB	MHY-9000-NFB	ZURN	195XL	3/4"	-	-
	HOSE BIBB SHALL HAVE AUTOMATIC DRAINING WITH ANTI-SIPHON VACUUM BREAKER. 3/4" INLET AND OUTLET. EXTERIOR FINISH TO BE CHROME. PROVIDE WITH LOOSE TEE KEY FOR EACH HOSE BIBB.									
MH	ICE MAKER BOX	DAIET CO.	38574	GUY GRAY	AB9700	SOLIX CHEF	696-9000MF	1/2"	-	-
	PLASTIC ICE MAKER BOX WITH 1/4 TURN BRASS BALL VALVE - COPPER SWEAT AND SUPPLY TUBE TO REFRIGERATOR. COORDINATE MOUNTING HEIGHT WITH ARCHITECT.									
L-1	LAVATORY	KOHLER	K-2864-0	AMERICAN STANDARD	0355.012	ZURN	Z5834			
	FAUCET	DELTA	523LF-HGM-HDF	CHICAGO FAUCETS	2200-4	MOEN	8470			
	TRAP	McGUIRE	8902	DEARBORN BRASS	7024	KOHLER	K-8999			2"
	SUPPLY	McGUIRE	58LK	BRASS CRAFT	R192AC	KOHLER	K-7605-P-CP	1/2"	1/2"	
	WALL HUNG LAVATORY SHALL BE MADE OF CAST IRON WITH A WHITE FINISH, HAVE 4" CENTERS, AN OVERFLOW. SEE ARCHITECTURAL DRAWINGS FOR MOUNTING HEIGHT. DECK MOUNTED FAUCET SHALL BE CHROME FINISH, SINGLE LEVER, 4" CENTERS, WITH 3/8" COPPER SUPPLY TUBE INLETS, AND PROVIDED WITH AN AERATOR. RIGID SUPPLY KIT SHALL INCLUDE CHROME PLATED BRASS STOPS WITH THREADED CONNECTIONS, FULL TURN BRASS STEM REDUCER, AND FLANGE. INLET SHALL BE 3/8" IPS. OUTLET SHALL BE 3/8" IPS. P-TRAP SHALL BE CHROME PLATED CAST BRASS BODY WITH CLEANOUT, CAST BRASS ELBOW AND CAST BRASS SLIP NUT, AND FLANGE. PROVIDE WITH OFFSET DRAIN, TRUEBRO LAV SHIELD, AND WATER TEMPERATURE LIMITING DEVICE THAT CONFORMS TO ASSE 1070 OR CSA B25.3.									
MR-1	MOP RECEPTOR	STERN WILLIAMS	SB-900	FIAT	T580C					3"
	FAUCET	STERN WILLIAMS	T-10-YB	CHICAGO	897RCF	MOEN	824	1/2"	1/2"	
	HOSE	STERN WILLIAMS	T-35	FIAT	832AA					
	MOP BRACKET	STERN WILLIAMS	T-40	FIAT	889CC					
	MOP RECEPTOR SHALL BE 24" x 24" x 12" DEEP WITH ONE PIECE STAINLESS STEEL CAP, NO FLANGES.									
S-1	COMPARTMENT SINK	JUST	SUN-ADA-23H-A-GR	ELKAY						
	FAUCET	DELTA	7H-WF-HDF	MOEN	7437	KOHLER		1/2"	1/2"	
	TRAP	McGUIRE	8902	KOHLER	K8999	DEARBORN BRASS	7024			2"
	SUPPLY	McGUIRE	170	KOHLER	K-76-6-P	BRASSCRAFT	CS400AC			
	STRAINER	JUST	JB-99	ELKAY	LK-99	DEARBORN	L7			
	SINK IS TO BE 16 GAUGE STAINLESS STEEL, SELF-RIMMING, DECK MOUNTED FAUCET SHALL BE CHROME FINISHED, WITH 1/2" INLET AND PROVIDED WITH AN AERATOR. RIGID SUPPLY KIT SHALL INCLUDE CHROME FINISH 8" CENTERS, AND PROVIDED WITH AN AERATOR. RIGID SUPPLY KIT SHALL INCLUDE CHROME PLATED BRASS STOPS WITH THREADED CONNECTIONS AND FLANGE. INLET AND OUTLET SHALL BE 3/8" IPS. PROVIDE WITH PROVIDE WITH McGUIRE FROWRAP INSULATOR, PROVIDE WITH SPRAYER, DISHWASHER CONNECTION, AND DISPOSAL IF REQUIRED BY ARCHITECT.									
S-2	WASH SINK	ADVANCE TABCO	FC-12424-24RL							
	FAUCET	ADVANCE TABCO	K-1	JUST						
	TRAP	ADVANCE TABCO	K-27	McGUIRE						2"
	SUPPLY	McGUIRE	58LK	ELLER	802-035	KOHLER	K-760-P	1/2"	1/2"	
	16-GAUGE STAINLESS STEEL WASH SINK WITH (2) 24" DRAINBOARDS, 8" CENTERS. SEE ARCHITECTURAL DRAWINGS FOR MOUNTING HEIGHT, SPLASH MOUNTED FAUCET SHALL BE CHROME FINISH, 8" CENTERS, AND PROVIDED WITH AN AERATOR. RIGID SUPPLY KIT SHALL INCLUDE CHROME PLATED BRASS STOPS WITH THREADED CONNECTIONS, FULL TURN BRASS STEM REDUCER AND FLANGE. P-TRAP SHALL BE CHROME PLATED AND PROVIDED WITH FLANGE.									

PLUMBING SCHEDULE NOTES AND LEGEND:

1. THE PLUMBING CONTRACTOR MAY SUBSTITUTE FIXTURES WITH OWNERS' APPROVAL.
 2. SUBMIT CUT SHEETS FOR ALL PROPOSED FIXTURES TO ARCHITECT PRIOR TO BIDDING.
 3. PROVIDE VACUUM BREAKER ON ALL EQUIPMENT REQUIRING PLUMBING.
 4. REFER TO MANUFACTURERS WEB SITE FOR CUT SHEETS AND DATA ON THE FIXTURES AND AFFURTENANCES USED IN THIS SCHEDULE.
- ADA COMPLIANT
 ELECTRICAL POWER
 GAS FIRED

PLUMBING GENERAL NOTES

1. ALL WORK SHALL BE DONE IN ACCORDANCE WITH THE LATEST EDITION OF THE STATE CODE, ALL LOCAL AND OTHER APPLICABLE CODES.
2. ANY PERMITS AND INSPECTION FEES SHALL BE SECURED AND PAID FOR BY THE PLUMBING CONTRACTOR.
3. ALL WORK SHALL BE PERFORMED BY EXPERIENCED AND SKILLED CRAFTSMAN, THE PLUMBING CONTRACTOR SHALL COORDINATE ALL OF HIS WORK WITH ALL OTHER CONTRACTORS.
4. THE PLUMBING PLANS AND SPECIFICATIONS SHALL BE THOROUGHLY REVIEWED PRIOR TO PURCHASING MATERIALS AND INSTALLATION. ALL DISCREPANCIES OR INTERFERENCE'S SHALL BE BROUGHT TO THE ENGINEERS ATTENTION.
5. THESE PLANS ARE DIAGRAMMATIC AND MAY NOT SHOW MINOR DETAILS AND LOCATIONS. FOR DIMENSIONS, REFER TO THE ARCHITECTURAL PLANS.
6. THE PLUMBING CONTRACTOR SHALL PROVIDE ALL OPENINGS REQUIRED FOR THE PLUMBING WORK. THE PATCHING SHALL BE BY THE PLUMBING CONTRACTOR AND FINISHING BY GENERAL CONTRACTOR.
7. ALL PIPE, FITTINGS, FIXTURES, AND SOLDER TO BE LEAD FREE.
8. WATER PIPING BELOW GRADE SHALL BE TYPE 1" COPPER (NO JOINTS BELOW GRADE) AND ABOVE GRADE TYPE 1" COPPER, SUPPORTED AS REQUIRED AND SHALL BE HYDROSTATICALLY TESTED FOR ONE HOUR AT 50 PSI TEST TO COMPLY WITH ALL EPA STANDARDS. THE ENTIRE WATER DISTRIBUTION SYSTEM SHALL BE DISINFECTED PRIOR TO PLACING IN SERVICE.
9. WATER PIPING LOCATED ABOVE CEILINGS AND IN EXTERIOR WALLS SHALL BE ROUTED ON HEATED SIDE OF CEILING INSULATION (UNDERSIDE) AND WALL INSULATION (INSIDE).
10. ALL COLD AND HOT WATER PIPING SHALL BE INSULATED. INSULATE WASTE PIPING AS DESIGNATED ON PLUMBING DRAWINGS. INSULATION SHALL BE FIBERGLASS. EXPOSED PIPING TO BE WRAPPED WITH ALUMINUM JACKET.
11. WATER SHUT - OFF VALVES ABOVE FINISHED CEILING ARE TO BE FREE FROM OBSTRUCTIONS SUCH AS DUCTWORK, LIGHTS, WIRES AND OTHER PIPING SO AS TO PROVIDE EASY ACCESS. MOUNT NO MORE THAN 2'-0" ABOVE FINISHED CEILING.
12. PLUMBING CONTRACTOR SHALL PROVIDE A DIELECTRIC UNION WHEN CONNECTING DISSIMILAR MATERIAL.
13. WATER HEATERS SHALL HAVE AND EFFICIENCY MEETING REQUIREMENTS OF THE NORTH CAROLINA BUILDING CODE.
14. THE PLUMBING CONTRACTOR SHALL BE RESPONSIBLE FOR ALL ELECTRICAL AND CONTROL CONNECTIONS TO THE EQUIPMENT FURNISHED UNDER HIS CONTRACT.
15. SANITARY SEWER AND VENT PIPING SHALL BE SCHEDULE 40 PVC, CELLULAR CORE (FOAM CORE) IS NOT ALLOWED. SANITARY SEWER AND VENT PIPING SHALL BE GAS AND AIR TIGHT.
16. THE PLUMBING CONTRACTOR SHALL COORDINATE ALL WORK WITH OTHER TRADES PRIOR TO INSTALLATION OF ANY WORK.
17. THE PLUMBING CONTRACTOR SHALL REVIEW ALL UTILITY SITE PLANS FOR WORK BY OTHERS. IT SHALL BE THE RESPONSIBILITY OF THE CONTRACTOR TO COORDINATE HIS WORK WITH WORK BY OTHERS AND AVOID ALL CONFLICTS.
18. LOCATIONS OF UTILITIES (WASTE AND WATER PIPING, ETC.) PROVIDED BY OTHERS, THAT ARE TO BE CONNECTED TO ARE ASSUMED. IT SHALL BE THE RESPONSIBILITY OF THE PLUMBING CONTRACTOR TO VERIFY THESE LOCATIONS AND MAKE FINAL CONNECTIONS AS REQUIRED.
19. VERIFY THE LOCATION OF ALL EQUIPMENT SUPPLIED BY OTHERS.
20. PROVIDE VACUUM BREAKERS ON ALL EQUIPMENT DIRECTLY CONNECTED TO THE WATER SYSTEM.
21. ALL VENT PIPING THROUGH THE ROOF SHALL BE A MINIMUM OF 5'-0" FROM ALL MAKE-UP AIR INLETS OR A MINIMUM OF 2'-0" ABOVE THE TOP OF ALL MAKE-UP AIR INLETS. VENTS THROUGH ROOF ARE TO BE ON REAR OF BUILDING.
22. SEE ARCHITECTURAL DRAWINGS FOR PLUMBING MINIMUM FACILITY CALCULATIONS.
23. ALL INDIRECT WASTE IS TO BE PROVIDED WITH AN AIR GAP 2 TIMES THE SIZE OF THE WASTE INLET.
24. THE PLUMBING CONTRACTOR SHALL VERIFY BUILDING FLOOR ELEVATION IS ABOVE MAN-HOLE RM ELEVATION OR PROVIDE A BACKWATER VALVE AS REQUIRED.
25. THE PLUMBING CONTRACTOR SHALL BE RESPONSIBLE FOR MINOR DEMOLITION AT NO COST TO THE OWNER.
26. THE PLUMBING CONTRACTOR SHALL PROVIDE THE ENGINEER WITH A SET OF AS-BUILT DRAWINGS UPON COMPLETION OF PROJECT.

PLUMBING SYMBOL LEGEND

SYMBOL	DESCRIPTION
	COLD WATER PIPING
	WATER PIPING DIRECTION OF FLOW
	COLD WATER PIPING BELOW FINISHED FLOOR
	HOT WATER PIPING
	BALL VALVE
	WATER PIPING TURNED DOWN
	WATER PIPING TURNED UP
	PIPING SIDE CONNECTION
	TRAP PRIMER
	SANITARY SEWER / WASTE PIPING
	SANITARY SEWER / WASTE PIPING DIRECTION OF FLOW
	VENT PIPING
	VENT PIPE UP
	NON-FREEZE WALL HYDRANT
	WALL HYDRANT
	PLUMBING FIXTURE PROVIDED AND INSTALLED BY PLUMBING CONTRACTOR
	PLUMBING FIXTURE PROVIDED BY OTHERS AND INSTALLED BY PLUMBING CONTRACTOR
	FLOOR CLEANOUT
	WALL CLEANOUT
	FLOOR DRAIN
	FLOOR SINK
	BELOW FINISHED GRADE
	BELOW FINISHED FLOOR
	ELECTRICAL EQUIPMENT BY ELECTRICAL CONTRACTOR. ROUTE PIPING TO AVOID.
	B.F.G.
	B.F.F.
	E.C.

PLUMBING LOAD SUMMARY

SANITARY SEWER DEMAND FU	WATER DEMAND FU	WATER DEMAND GPM
21.0	29.0	42.0

321 BLUE ROSE ROAD, STE 113
 RALEIGH, NC 27612
 (919) 871-1111
 www.imegnc.com
 IMEG RESERVES PROPRIETARY RIGHTS, INCLUDING COPYRIGHTS, TO THIS DRAWING AND THE DATA SHOWN THEREON. SAID DRAWING AND/OR DATA ARE THE EXCLUSIVE PROPERTY OF IMEG AND SHALL NOT BE USED OR REPRODUCED FOR ANY OTHER PROJECT WITHOUT THE EXPRESS WRITTEN APPROVAL AND PARTICIPATION OF IMEG.
 02024 IMEG CONSULTANT'S CORP.
 North Carolina Design Registration #1-1027
 REF. SCALE IN INCHES PROJECT # 25004

OAKLEY
 COLLIER
 ARCHITECTS
 OCA
 ARCHITECTS
 109 Candlewood Road, Rocky Mount, NC 27804 (P) 252.937.2500
 205 West Martin Street, Raleigh, NC 27601 (P) 919.985.7700

ATLANTIC
 ENGINEERS, PA
 IMEG
 321 BLUE ROSE ROAD, SUITE 113
 RALEIGH, NC 27612
 (919) 871-1111
 2024

NEW CONSTRUCTION FOR:
FOOD PANTRY BUILDING
 512 FOOD PANTRY
 17247 NC W., SANFORD, NC 27332

NORTH CAROLINA
 PROFESSIONAL ENGINEERING
 CORPORATION
 No. F-1507
 PERMIT SET

NORTH CAROLINA
 PROFESSIONAL ENGINEERING
 CORPORATION
 SEAL
 051195
 PERMIT SET

GENERAL NOTE:
 Prior to construction start, Contractor shall verify & be responsible for all Dimensions.

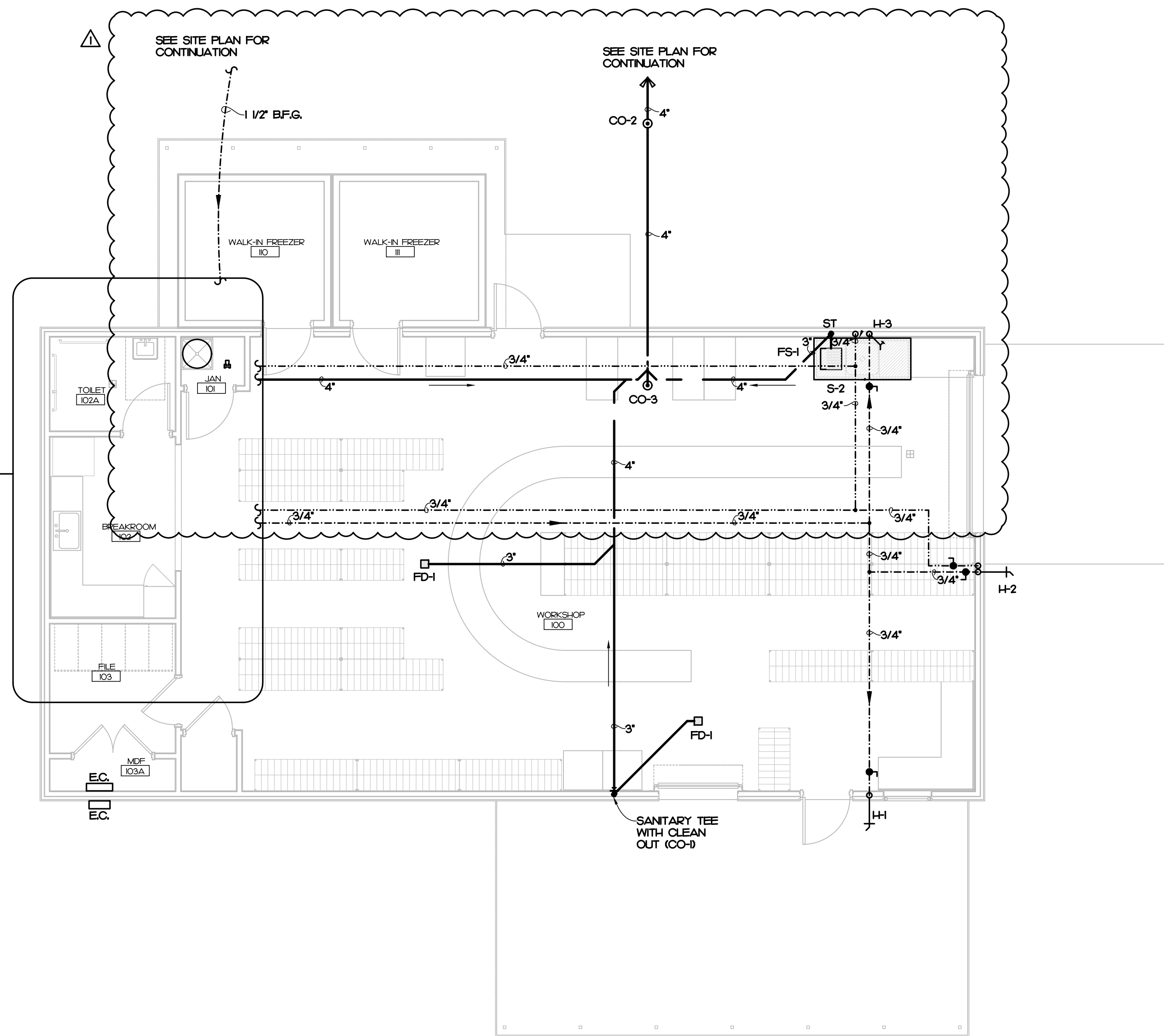
Revisions	Description	Date
1	PLUMBING REVISIONS	3/19/26

Date: 11/24/25
 Project No: 25003
 Drawn By: JAD
 Checked By: PJM
 Sheet Title: PLUMBING NOTES, LEGENDS, FIXTURE SCHEDULE, AND DETAILS
 Sheet No: P0.1

Copyright © 2025 Oakley, Collier, Architects. These drawings are the property of the Architect for use under his supervision. No reproduction or other use is allowed without permission.

Copyright © 2025 Oakley Collier Architects. These drawings are the property of the Architect for use under his supervision. No reproduction or other use is allowed without permission.

1&2
P1.2



1 PLUMBING PLAN
P1.1 3/16" = 1'-0"

IMEG
321 BLUE ROSE ROAD, STE 113
RALEIGH, NC 27612
P #1937.1115

www.imegca.com

IMEG RESERVES PROPRIETARY RIGHTS, INCLUDING COPYRIGHTS, TO THIS DRAWING AND THE DATA SHOWN THEREON. SAID DRAWING AND/OR DATA ARE THE EXCLUSIVE PROPERTY OF IMEG AND SHALL NOT BE USED OR REPRODUCED FOR ANY OTHER PROJECT WITHOUT THE EXPRESS WRITTEN APPROVAL AND PARTICIPATION OF IMEG.
©2024 IMEG CONSULTANTS CORP.
North Carolina Design Registration #F-1937

0 1 2 3
REF. SCALE IN INCHES PROJECT # 25024

GENERAL NOTE:
Prior to construction start, Contractor shall verify & be responsible for all Dimensions.

Revisions	Description	Date
△	PLUMBING REVISIONS	3/19/26

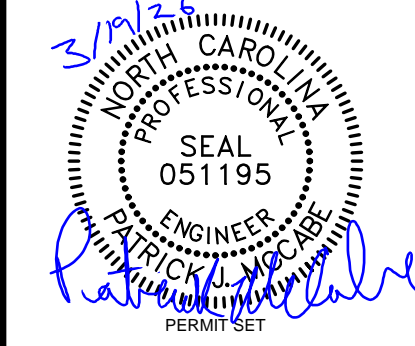
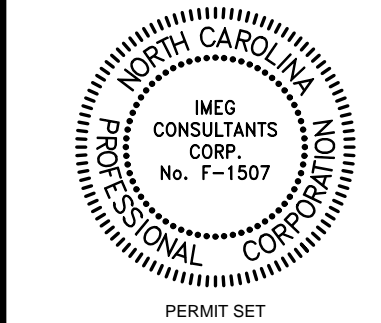
Date	Project No.
11/24/25	25003
Drawn By	Sheet No.
JAD	P1.1
Checked By	
PJM	

Sheet Title
PLUMBING PLAN

NEW CONSTRUCTION FOR:

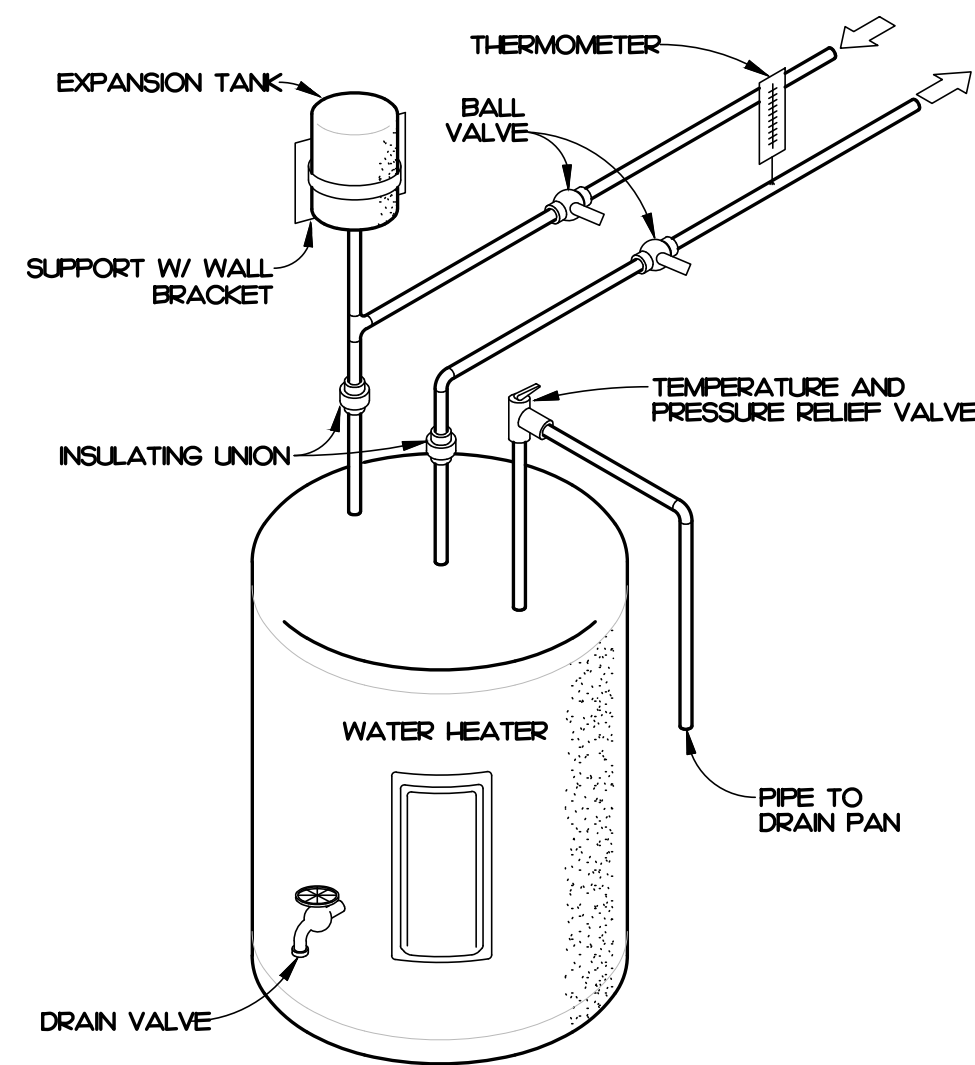
FOOD PANTRY BUILDING

5N2 FOOD PANTRY
17247 NC W., SANFORD, NC 27332

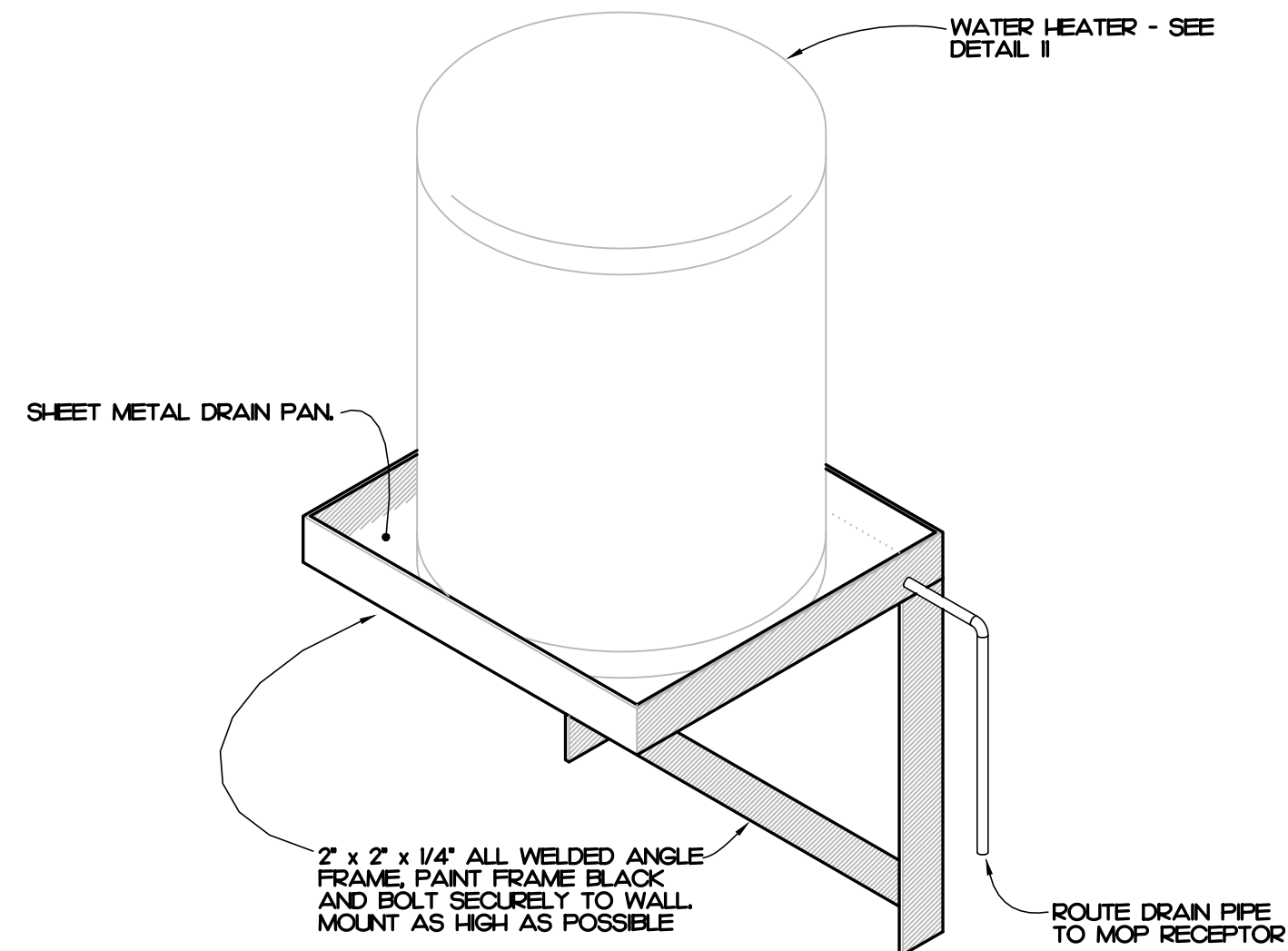


OAKLEY COLLIER ARCHITECTS
OCA
109 Candlewood Road, Rocky Mount, NC 27804 (P) 252.937.2500
205 West Martin Street, Raleigh, NC 27601 (P) 919.985.7700

ATLANTEC ENGINEERS, P.A.
IMEG
321 BLUE ROSE ROAD, SUITE 113
RALEIGH, NC 27612
2024



4 WATER HEATER DETAIL (WH-1)
P12 NOT TO SCALE



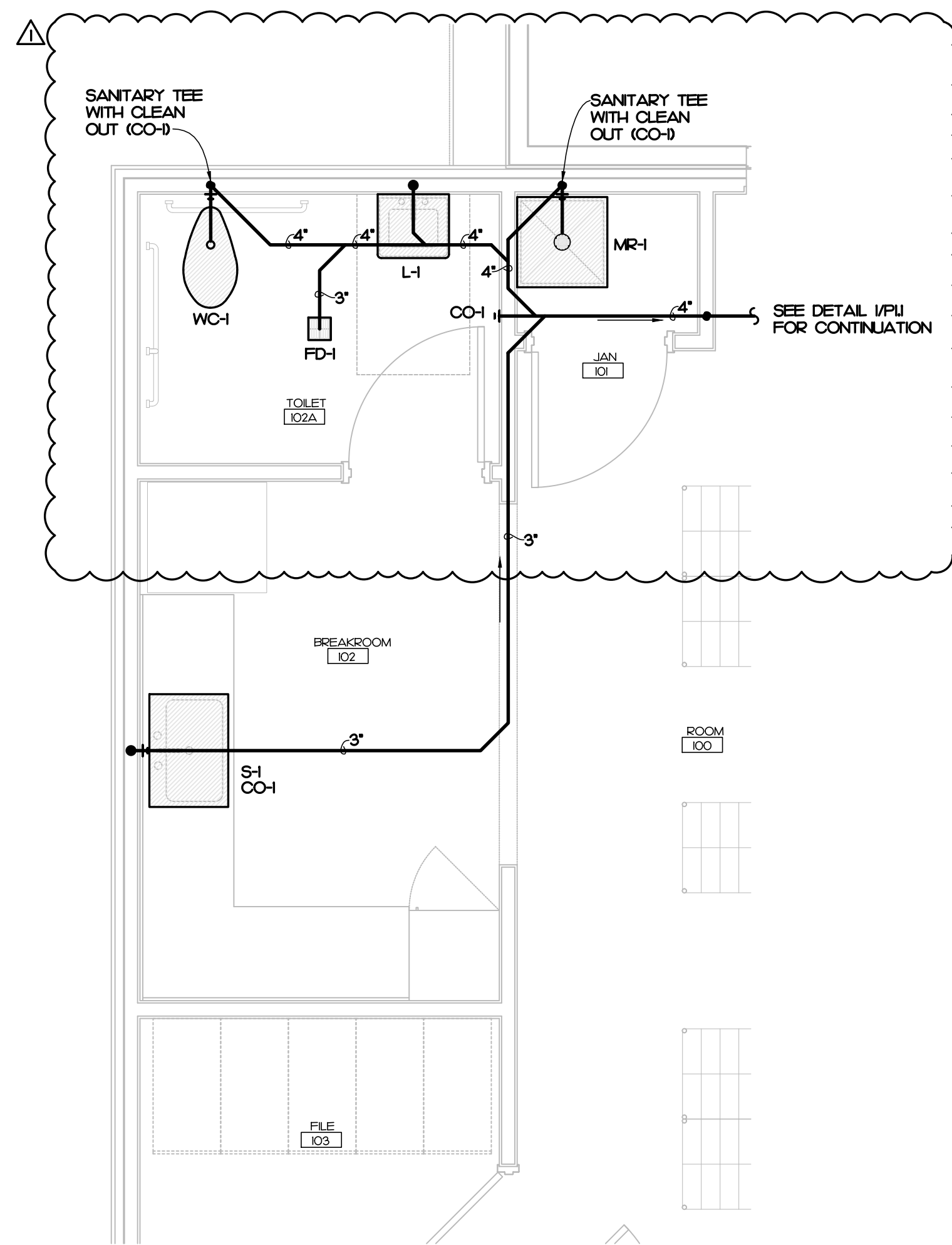
3 WATER HEATER MOUNTING DETAIL (WH-1)
P12 NOT TO SCALE

PLUMBING FIXTURE SCHEDULE

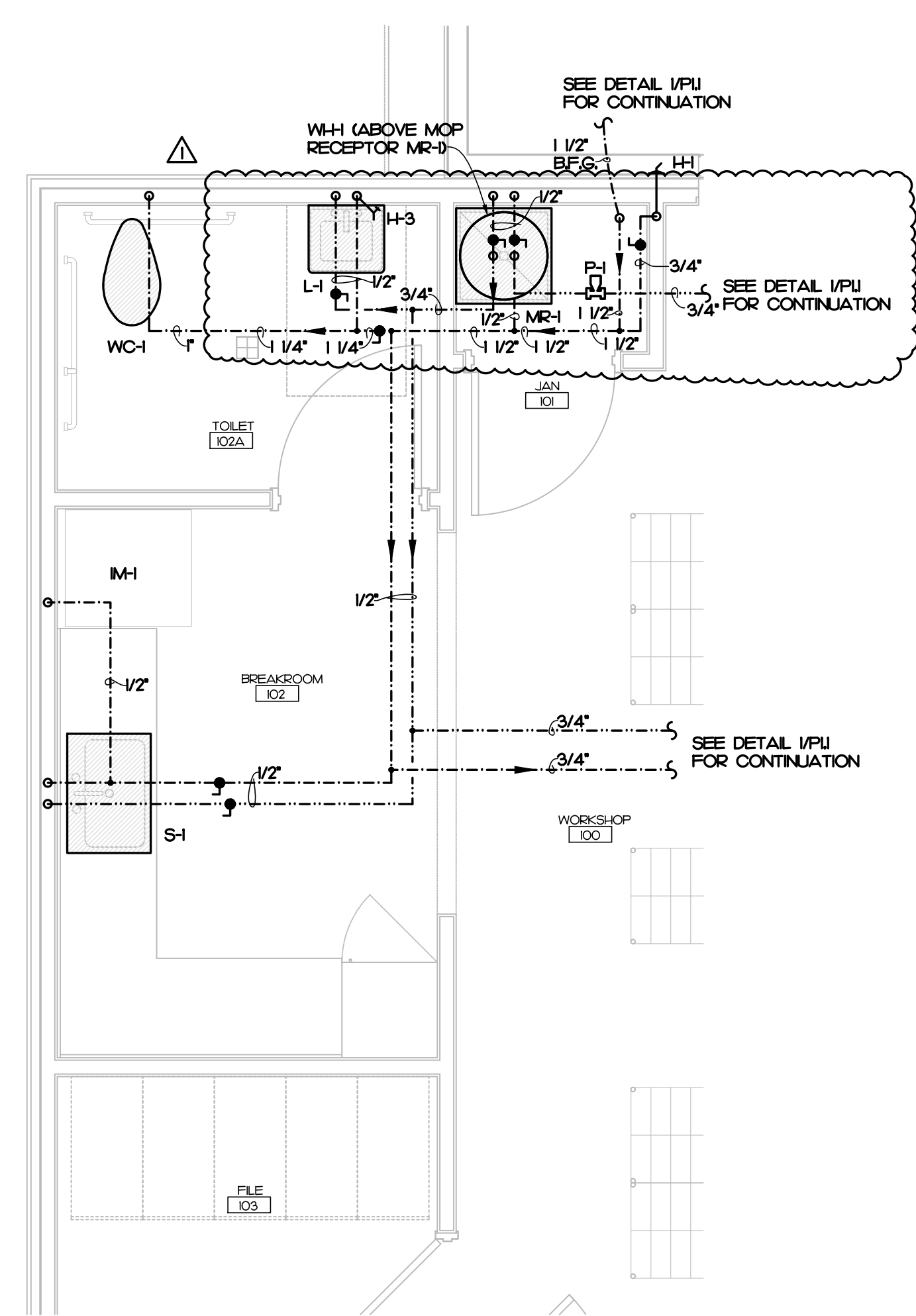
SYMBOL / IMAGE	DESCRIPTION	3 - EQUALS				PIPING CONNECTIONS				
		MANUFACTURER	MODEL NUMBER	MANUFACTURER	MODEL NUMBER	MANUFACTURER	MODEL NUMBER	COLD WATER	HOT WATER	SANITARY SEWER
WH	WATER HEATER	STATE INDUSTRIES	PCE 40 20LSA	A.O. SMITH				3/4"	3/4"	
		ELECTRIC WATER HEATER SHALL HAVE A 40 GALLON STORAGE CAPACITY, AN ELECTRIC INPUT OF 45 KW AT 240 VOLT, SINGLE PHASE AND A RECOVERY OF 19 GPH AT A 100' RISE. PROVIDE WITH THERMOSTATIC MIXING VALVE SET AT 100F, EXPANSION TANK AND HEAVY DUTY FUSIBLE DISCONNECT, WIRING BY LICENSED ELECTRICAL CONTRACTOR. WATER HEATER TO BE PROVIDED WITH HEAT TRAPS AND MEET THE ENERGY EFFICIENCY REQUIREMENT PER 2018 NORTH CAROLINA STATE BUILDING CODE/ ENERGY CONSERVATION CODE.								
P1	RECIRCULATING PUMP	B & G	PL36							
		RECIRCULATING PUMP SHALL BE 1/6 HORSEPOWER, 120 VOLT, SINGLE PHASE. PROVIDE PUMP WITH MOUNTING BRACKET, TIMER, AQUASTAT AND DISCONNECT, DISCONNECT WIRING BY LICENSED ELECTRICAL CONTRACTOR.								
WC-1	WATER CLOSET	KOHLER	K-3979	TOTO	CS1744SL	AMERICAN STANDARD	26AA004.020			
	SEAT	BEMIS	K555SC	KOHLER	K-4670-C-0	CHURCH				
	SUPPLY	BRASSCRAFT	CS40DLC	KOHLER	K-7638	McGUIRE	185			
		1/6 GPF TOILET SHALL BE MADE OF VITREOUS CHINA WITH A WHITE FINISH AND A 12" ROUGH-IN. TOILET SHALL INCLUDE POLISHED CHROME TRIP LEVER. SEAT SHALL BE EXTRA HEAVY WEIGHT SOLID PLASTIC WITH OPEN FRONT LESS COVER FOR ELONGATED BOWL. SUPPLY KIT SHALL INCLUDE CHROME PLATED BRASS STOPS, FULL TURN BRASS STEM AND FLANGE. INLET SHALL BE 3/8" IPS. OUTLET SHALL BE 3/8" IPS. THE FLUSHING LEVER MECHANISM SHALL BE ON THE WIDE SIDE OF THE STALL.								

PLUMBING SCHEDULE NOTES AND LEGEND:

1. THE PLUMBING CONTRACTOR MAY SUBSTITUTE FIXTURES WITH OWNERS' APPROVAL.
 2. SUBMIT CUT SHEETS FOR ALL PROPOSED FIXTURES TO ARCHITECT PRIOR TO BIDDING.
 3. PROVIDE VACUUM BREAKER ON ALL EQUIPMENT REQUIRING PLUMBING.
 4. REFER TO MANUFACTURERS WEB SITE FOR CUT SHEETS AND DATA ON THE FIXTURES AND APPURTENANCES USED IN THIS SCHEDULE.
- ADA COMPLIANT
 ELECTRICAL POWER
 GAS FRED



1 PLUMBING ENLARGED PLAN - WASTE PIPING
P12 3/8" - 1'-0"



2 PLUMBING ENLARGED PLAN - WATER PIPING
P12 3/8" - 1'-0"

IMEG
321 BLUE ROSE ROAD, STE 113
RALEIGH, NC 27612
P 919.851.1111

MEG RESERVES PROPRIETARY RIGHTS, INCLUDING COPYRIGHTS, TO THIS DRAWING AND THE DATA SHOWN THEREON. SAID DRAWING AND/OR DATA ARE THE EXCLUSIVE PROPERTY OF IMEG AND SHALL NOT BE USED OR REPRODUCED FOR ANY OTHER PROJECT WITHOUT THE EXPRESS WRITTEN APPROVAL AND PARTICIPATION OF IMEG.
020224 IMEG CONSULTANT'S CORP.
North Carolina Design Registration #F-1507

REF. SCALE IN INCHES PROJECT # 25004

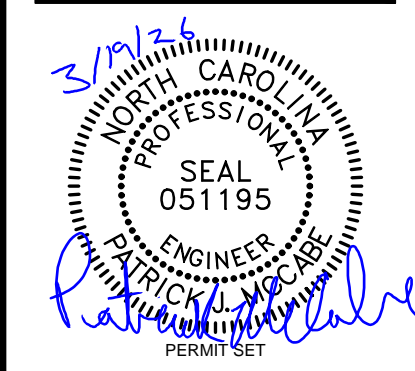
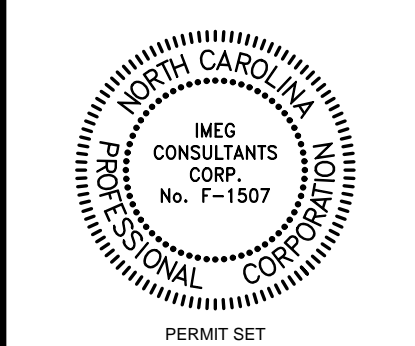
OAKLEY
COLLIER
OCA
ARCHITECTS

109 Candlewood Road, Rocky Mount, NC 27804 (P) 252.937.2500
205 West Martin Street, Raleigh, NC 27601 (P) 919.985.7700

ATLANTEC
ENGINEERS, P.A.
IMEG

321 BLUE ROSE ROAD, SUITE 113
RALEIGH, NC 27612
919.851.1111
2024

NEW CONSTRUCTION FOR:
FOOD PANTRY BUILDING
5N2 FOOD PANTRY
17247 NC W., SANFORD, NC 27332



GENERAL NOTE:
Prior to construction start, Contractor shall verify & be responsible for all Dimensions.

Revisions	Description	Date
1	PLUMBING REVISIONS	3/19/26

Date	Product No.
11/24/25	25003
Drawn By	Sheet No.
JAD	P1.2
Checked By	
PJM	
Sheet Title	
PLUMBING ENLARGED PLANS	

Copyright © 2025 Oakley, Collier, Architects. These drawings are the property of the Architect for use under his supervision. No reproduction or other use is allowed without permission.

