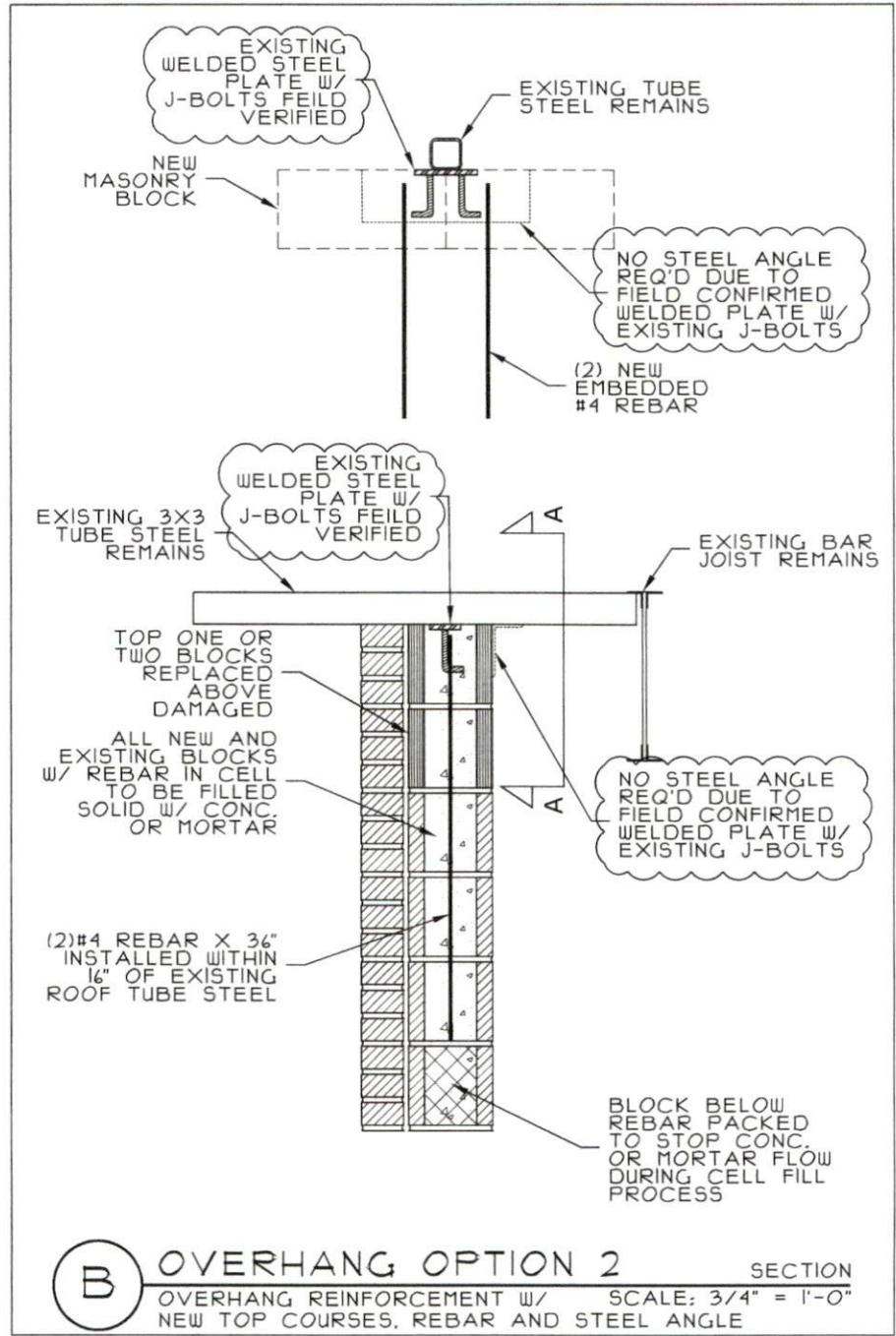


1. DETAIL MODIFIED FOR THAT NO NEW STEEL ANGLE W/ ANCHORS REQUIRED TO BE INSTALLED DUE TO EXISTING STEEL PLATE W/ J-BOLTS WAS VISUALLY VERIFIED AT TUBE STEEL.



SEAL DATE: 11-28-25

SCALE: NTS = 1'-0"



STRUCTURAL DESIGN BY:



LICENSE NO. C-3041

WOODARD SEASE & ASSOCIATES, PC

STRUCTURAL ENGINEERS

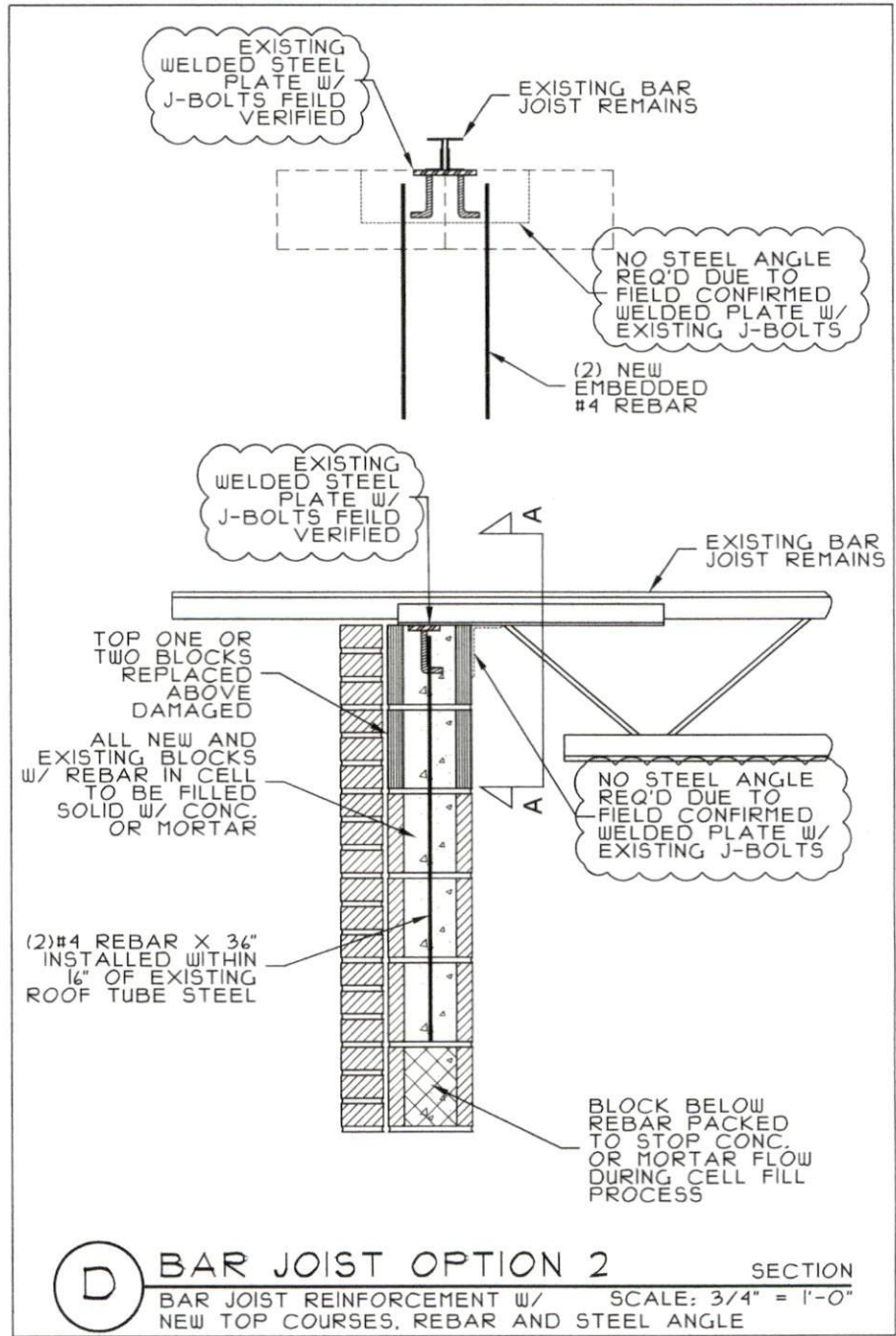
4915 WATERS EDGE DRIVE, RALEIGH, NC 27606
OFFICE: (919) 307-3995

PROJECT NO. 25-20-106

THE DRAWINGS AND PLAN ENGINEERING ARE THE PROPERTY OF WOODARD SEASE AND ASSOCIATES PC, ISSUED EXCLUSIVELY FOR THIS PROJECT AND SHALL NOT BE DUPLICATED OR USED FOR OTHER PURPOSES, IN WHOLE OR PART, WITHOUT WRITTEN PERMISSION OF WOODARD SEASE AND ASSOCIATES PC.

WOODARD SEASE AND ASSOCIATES PC ASSUMES NO LIABILITY FOR DEVIATIONS FROM OR MODIFICATIONS MADE TO THE PLANS BY OTHERS. WOODARD SEASE AND ASSOCIATES PC WILL NOT BE HELD RESPONSIBLE FOR CONTRACTOR'S FAILURE TO CONFORM TO CONSTRUCTION DOCUMENTS, FAILURE TO NOTIFY ENGINEER OF KNOWN DISCREPANCIES, OR CONSTRUCTION MEANS AND METHODS.

1. DETAIL MODIFIED FOR THAT NO NEW STEEL ANGLE W/ ANCHORS REQUIRED TO BE INSTALLED DUE TO EXISTING STEEL PLATE W/ J-BOLTS WAS VISUALLY VERIFIED AT BAR JOISTS.



SEAL DATE: 11-28-25

SCALE: NTS = 1'-0"



STRUCTURAL DESIGN BY:



LICENSE NO. C-3041

WOODARD SEASE & ASSOCIATES, PC

STRUCTURAL ENGINEERS

4915 WATERS EDGE DRIVE, RALEIGH, NC 27606
OFFICE: (919) 307-3995

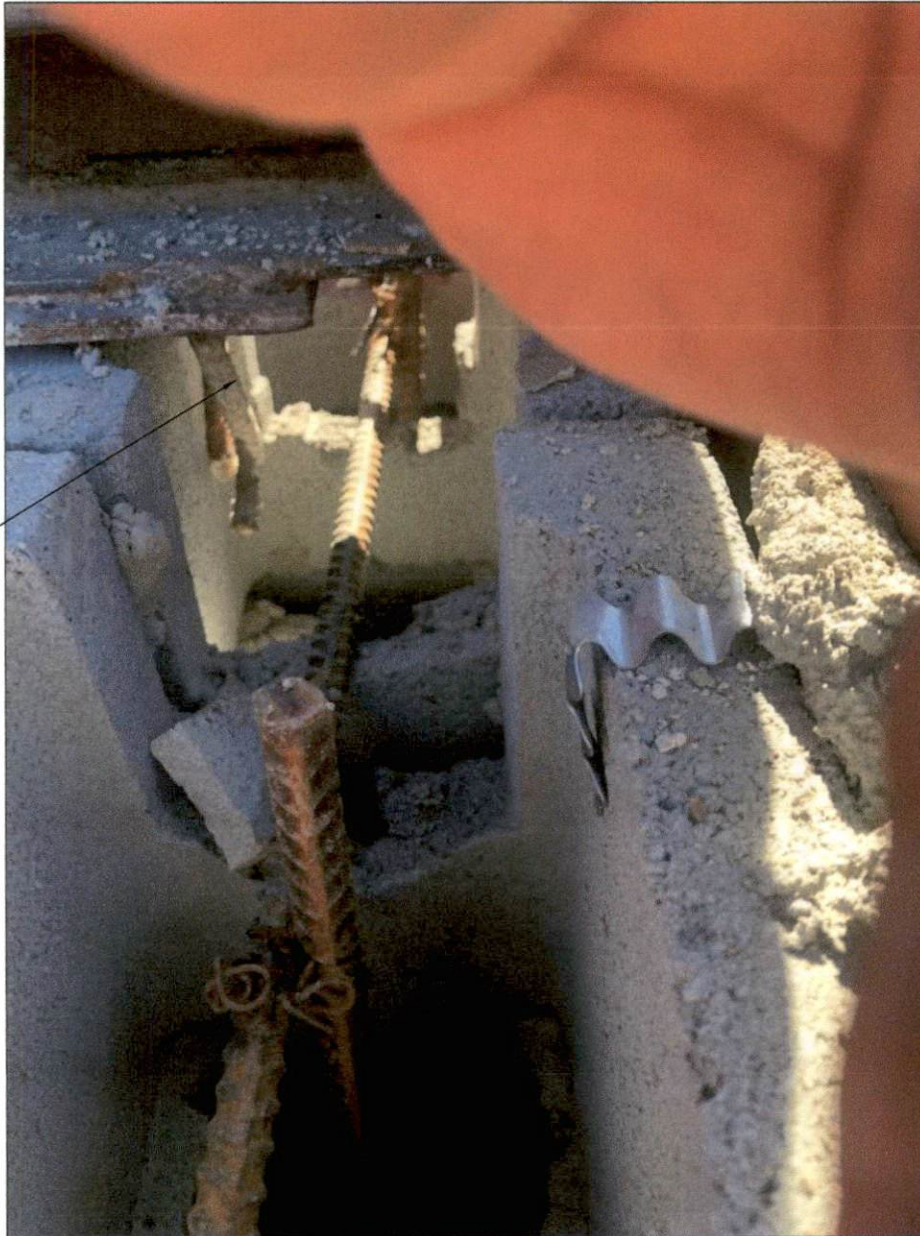
PROJECT NO. 25-20-106

THE DRAWINGS AND PLAN ENGINEERING ARE THE PROPERTY OF WOODARD SEASE AND ASSOCIATES PC, ISSUED EXCLUSIVELY FOR THIS PROJECT AND SHALL NOT BE DUPLICATED OR USED FOR OTHER PURPOSES, IN WHOLE OR PART, WITHOUT WRITTEN PERMISSION OF WOODARD SEASE AND ASSOCIATES PC.

WOODARD SEASE AND ASSOCIATES PC ASSUMES NO LIABILITY FOR DEVIATIONS FROM OR MODIFICATIONS MADE TO THE PLANS BY OTHERS. WOODARD SEASE AND ASSOCIATES PC WILL NOT BE HELD RESPONSIBLE FOR CONTRACTOR'S FAILURE TO CONFORM TO CONSTRUCTION DOCUMENTS, FAILURE TO NOTIFY ENGINEER OF KNOWN DISCREPANCIES, OR CONSTRUCTION MEANS AND METHODS.

- 1. PHOTO OF J-BOLTS AND WELDED STEEL PLATE OBSERVED.

EXISTING
J-BOLTS AND
WELDED
PLATE



EXISTING WELDED STEEL PLATES W/ (2) WELDED J-BOLTS WERE VISUALLY VERIFIED ATTACHED TO THE TUBE STEEL AND BAR JOISTS DURING INSPECTION

SEAL DATE: 11-28-25

SCALE: NTS = 1'-0"



STRUCTURAL
DESIGN BY:



LICENSE NO.
C-3041

**WOODARD SEASE
& ASSOCIATES, PC**

STRUCTURAL ENGINEERS

4915 WATERS EDGE DRIVE, RALEIGH, NC 27606
OFFICE: (919) 307-3995

PROJECT NO. 25-20-106

THE DRAWINGS AND PLAN ENGINEERING ARE THE PROPERTY OF WOODARD SEASE AND ASSOCIATES PC, ISSUED EXCLUSIVELY FOR THIS PROJECT AND SHALL NOT BE DUPLICATED OR USED FOR OTHER PURPOSES, IN WHOLE OR PART, WITHOUT WRITTEN PERMISSION OF WOODARD SEASE AND ASSOCIATES PC.

WOODARD SEASE AND ASSOCIATES PC ASSUMES NO LIABILITY FOR DEVIATIONS FROM OR MODIFICATIONS MADE TO THE PLANS BY OTHERS. WOODARD SEASE AND ASSOCIATES PC WILL NOT BE HELD RESPONSIBLE FOR CONTRACTOR'S FAILURE TO CONFORM TO CONSTRUCTION DOCUMENTS, FAILURE TO NOTIFY ENGINEER OF KNOWN DISCREPANCIES, OR CONSTRUCTION MEANS AND METHODS.