

109 East B. st, Erwin, Nc 28339

Word & Glory Church

6'x11'x5" platform
Removable

FRONT

BACK

All seats are removable and stackable.

30 seat Configure

40 seat Configure

Red dot is Post from floor to ceiling

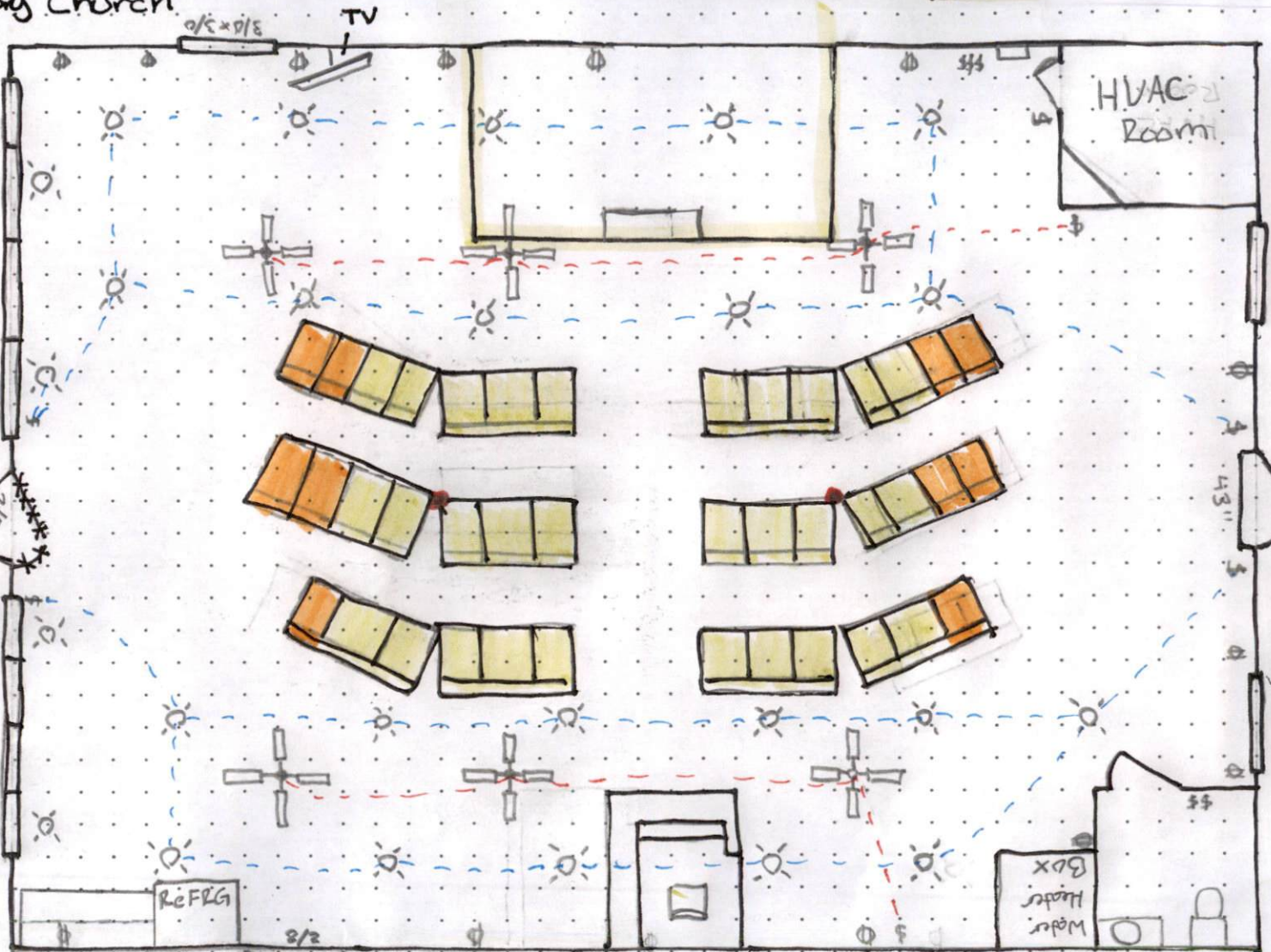
3/16" = 1'

Door Hardware



Push bar exit hardware

OUTSIDE



Free standing both for sound and camera

107

3/16" = 1'

Alleyway Outside

Life Safety Plan

NOTICE TO CONTRACTOR
All construction must comply with current NC Building Codes and is subject to field inspection and verification.

Reviewed for Code Compliance
03/10/2026

B. Fisher

HARNETT COUNTY
NORTH CAROLINA

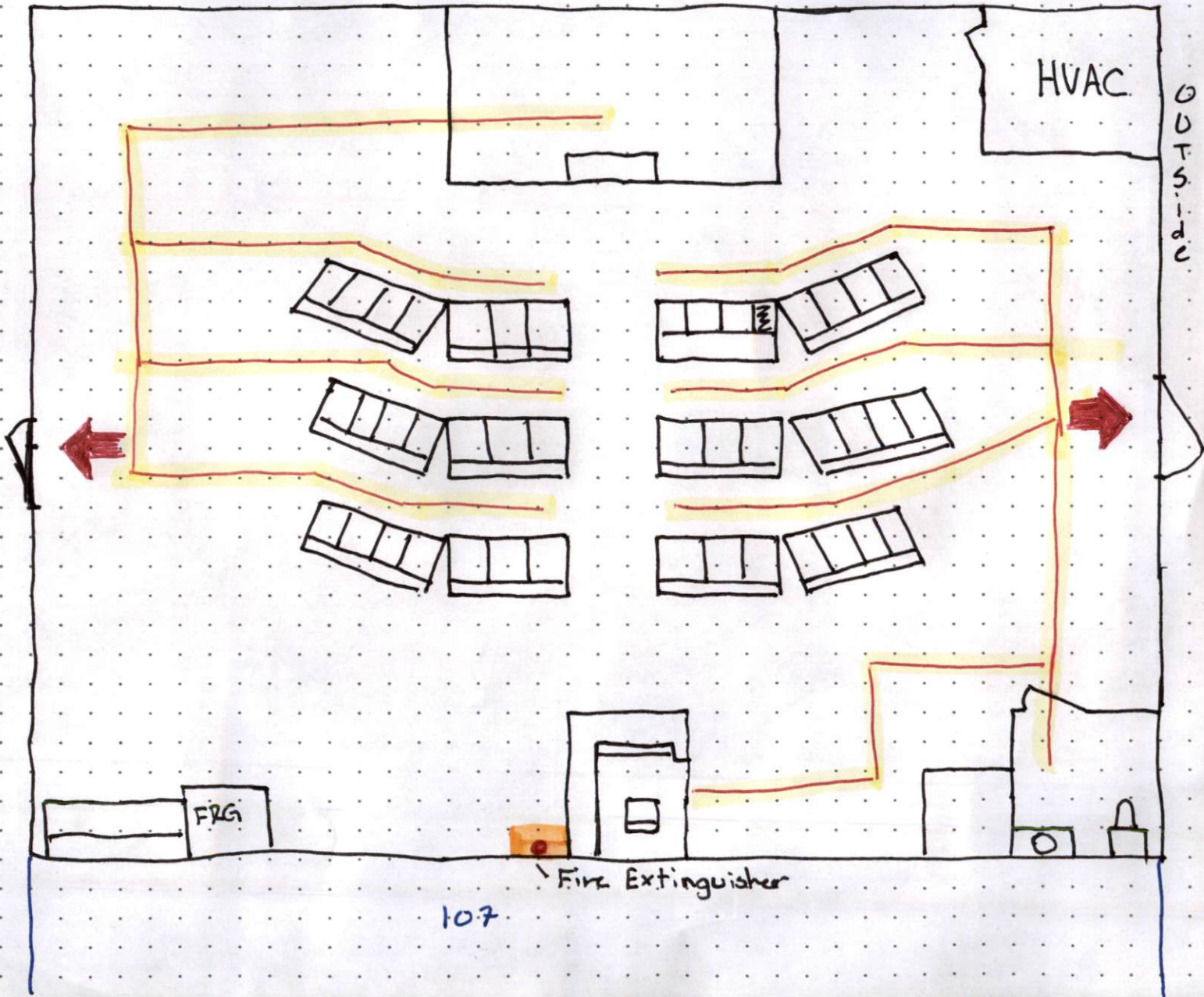
Outside

Push Bar Exit hardware

Calculated Occ load 172.

1200/7=171.42. Exits must have panic hardware. Must have exit lights and emergency lights.

Max occ load based on existing bathroom is 30.



107

Fire Extinguisher

Outside