

Client Kenneth West Grading Co.**Name** Cross Creek Subdivision**Number** 00250001**Site** Bethel Baptist Road - Anderson Creek Township, NC**Designer** Terrell L. Hamilton**Revision** 1 **Created** 4/22/2025**Modified** 4/22/2025**Standard** National Concrete Masonry Association 3rd Edition

Note †: Total Facing quantity is based on using full-sized units only on bottom course and an even mix of defined facing sizes, as identified elsewhere in this report, on remaining courses of each Section. The use of corners, tapered or cut units is not reflected in this quantity.

Note ‡: Infill values are calculated based on the average geogrid length in each Section. They do not account for anything beyond the reinforced zone (end of the geogrids). Actual infill values may be significantly higher.

Note : Face drain values do not include the drainage stone within block. Drainage stone within block is calculated based on the percentage hollow core of the wall unit selected. If the percentage hollow core is not defined then the drainage stone within block will not be calculated.

Quantities

Wall	Facing	Wall/Cap Length [ft]	TOW Steps [#]	BOW Steps [#]	Facing Area [ft²]	Total Wall Area [ft²]
Wall 1	RidgeRock Maxim	141	4	10	501	548
		141	4	10	501	548

Wall Unit	Wall 1
RidgeRock Maxim	501

Wall	Leveling Pad [yd³]	Reinforced Fill [yd³]	Drainage Fill [yd³]	Core Fill [yd³]
Wall 1	7	0	19	16
Totals:	7	0	19	16

Reinforcements

Wall	Geogrid Connectors
Wall 1	0
Totals:	0

NOTE: THESE CALCULATIONS, QUANTITIES, AND LAYOUTS ARE FOR PRELIMINARY DESIGN ONLY
AND SHOULD NOT BE USED FOR CONSTRUCTION WITHOUT REVIEW BY A QUALIFIED ENGINEER



Project: 00250001 - Cross Creek Subdivision

Site: Bethel Baptist Road - Anderson Creek Township, NC

Date: 4/22/2025

Wall: Wall 1

Project Information

Client	Kenneth West Grading Co.			Number	00250001
Name	Cross Creek Subdivision			Designer	Terrell L. Hamilton
Site	Bethel Baptist Road - Anderson Creek Township, NC			Modified	4/22/2025
Revision	1	Created	4/22/2025		
Standard	National Concrete Masonry Association 3rd Edition				
Seismic As	N/A				

Selected Facing Unit

Licenser/Product Line: Ridge Rock Retaining Walls
Name: RidgeRock Maxim

NOTE: THESE CALCULATIONS, QUANTITIES, AND LAYOUTS ARE FOR PRELIMINARY DESIGN ONLY
AND SHOULD NOT BE USED FOR CONSTRUCTION WITHOUT REVIEW BY A QUALIFIED ENGINEER



Project Summary

Quantities

Wall Length	141.00 ft
Steps in Top of Wall	4
Steps in Bottom of Wall	10
Total Wall Area	548 ft ²
Exposed Area (includes cap)	464 ft ²
Embedded Area	84 ft ²
Tallest Panel Height	5.00 ft
Base soil volume	7 yd ³
Infill soil volume ‡	0 yd ³
Gravity Face Drain	19 yd ³
Face Drain	0 yd ³
Drainage stone within block	16 yd ³

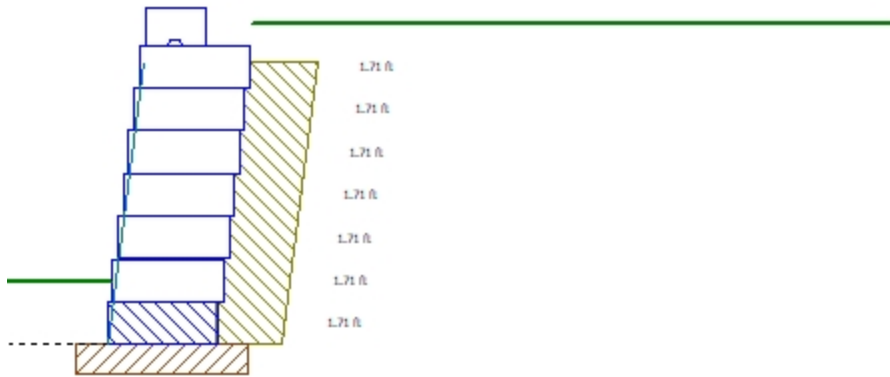
Note †: Total Facing Unit quantity is based on using full-sized units only on bottom course and an even mix of defined facing sizes, as identified elsewhere in this report, on remaining courses of each Section. The use of corners, tapered or cut units is not reflected in this quantity.

Note ‡: Reinforced fill values are calculated based on the average geogrid length in each Section. They do not account for anything beyond the reinforced zone (end of the geogrids). Actual infill values may be significantly higher.

Note : Drainage fill does not include the drainage stone within block. Core fill are calculated based on the percentage hollow core of the wall unit selected. If the percentage hollow core is not defined then the Core fill value within block will not be calculated.

Tallest Section

Section Height 5.00 ft



NOTE: THESE CALCULATIONS, QUANTITIES, AND LAYOUTS ARE FOR PRELIMINARY DESIGN ONLY
AND SHOULD NOT BE USED FOR CONSTRUCTION WITHOUT REVIEW BY A QUALIFIED ENGINEER