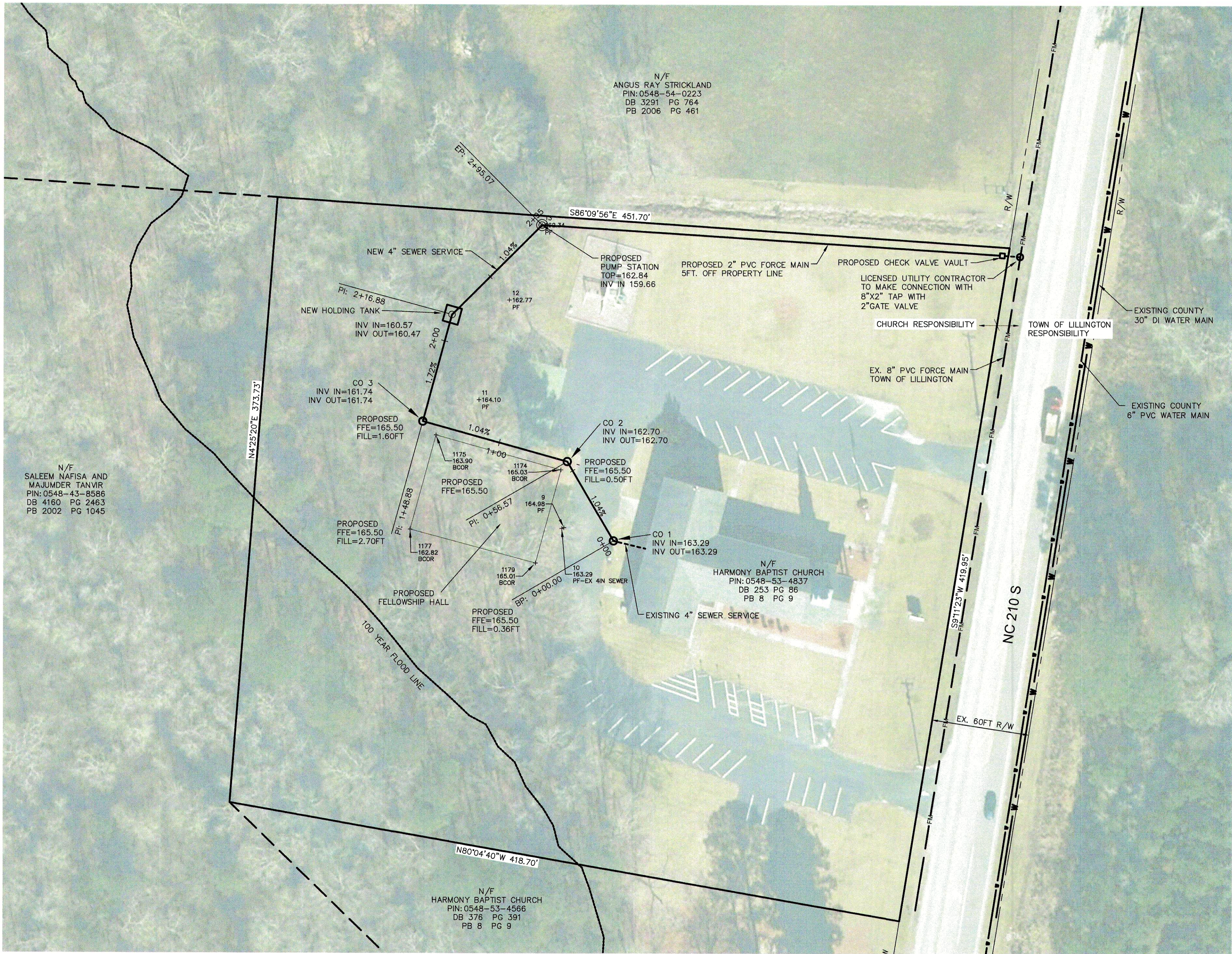
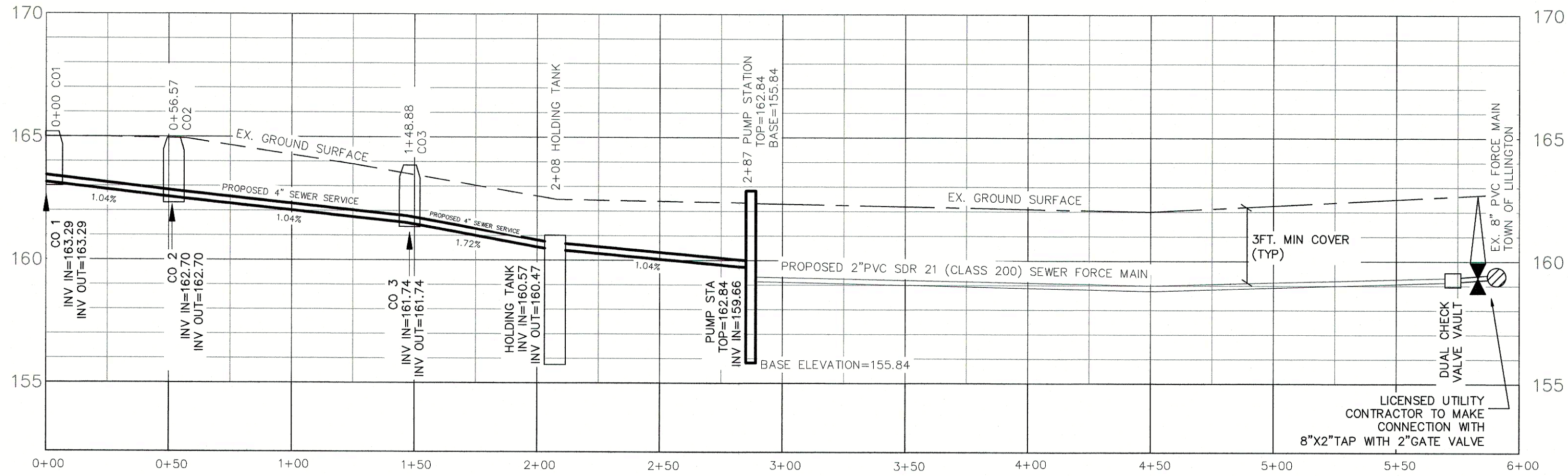


W:\HARMONY\2406A\Survey\Harmony Church-- Rodney\Survey\DWG\HARMONY CHURCH_23floodplain_recover Duplex.dwg Last Plotted by: JAMES BURGESS for Green Engineering on Monday, May 19, 2025 @ 8:30:04 AM

- NOTES
- 1-MATERIALS FOR SEWER TAP AND CHECK VALVE TO RIGHT OF WAY MUST BE APPROVED BY THE TOWN OF LILLINGTON.
 - 2-PUMP STATION WILL HAVE VISUAL ALARM.
 - 3- 2-INCH TOWN OF LILLINGTON MATERIALS FROM TAP TO CHECK VALVE MUST MEET TOWN OF LILLINGTON SPECIFICATIONS FOR FORCE MAIN/WATER.
 - 4-ALL FITTINGS MUST BE COMPRESSION BRASS. ALL FORCE MAIN SHALL BE SDR 21 (CLASS 200) PVC WITHIN NCDOT RIGHT OF WAY.
 - 5-PLEASE CALL NC811 BEFORE DIGGING
 - 6- ALL RIGHT OF WAY WORK MUST COMPLY WITH NCDOT MUTCD AND ENCROACHMENT AGREEMENT.



Alignment05
STA: 0+00 - 6+00
HORIZONTAL SCALE: 1"=40'
VERTICAL SCALE: 1"=4'



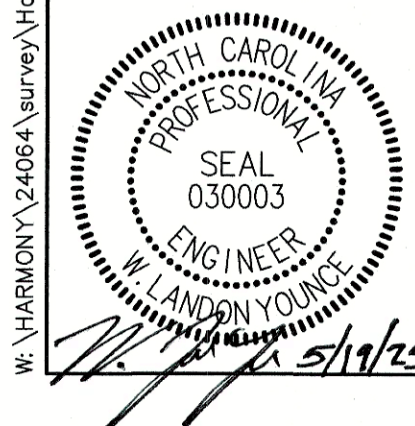
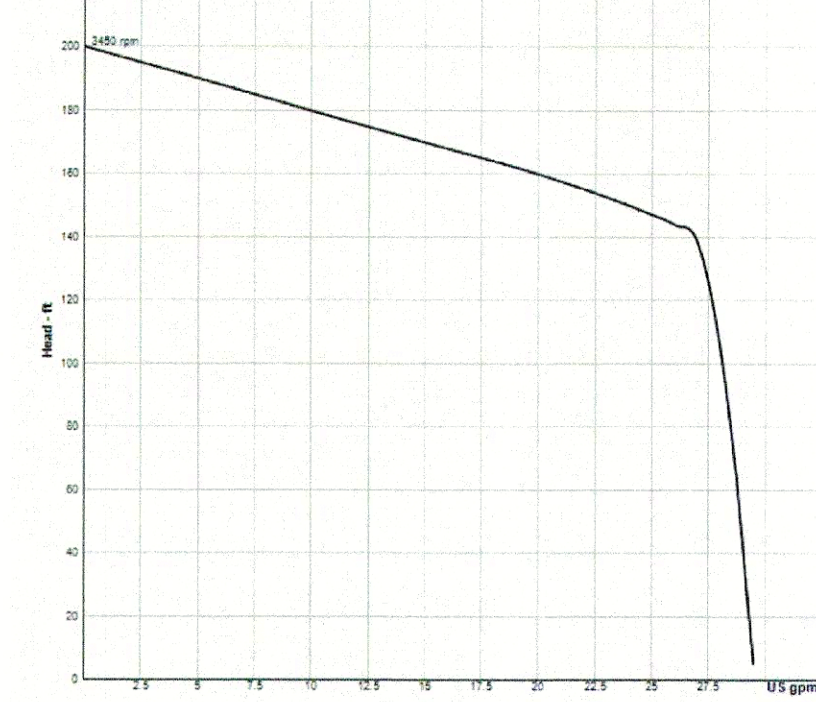
SPECIFICATIONS

IMPELLER:
SEAL: CORD EXTRUDED 30 FT. (3.1 M) STD. CORD. CUSTOM MOLDED QUICK CONNECT, FOR SEALING AND STRAIN RELIEF
CORD: CSA/UL APPROVED, 12/4 TYPE 30W

DISCHARGE: 1 1/2" NPT
LIQUID TEMPERATURE: 104°F (40°C) CONTINUOUS
VOLUTS: CAST IRON ASTM A-48, CLASS 30
MOTOR HOUSING: CAST IRON ASTM A-48, CLASS 30
SEAL: PLATECAST IRON ASTM A-48, CLASS 30
CUTTER PLATE: HARDENED 440C STAINLESS STEEL ROCKWELL C-55
CLUTTER: HARDENED 440C STAINLESS STEEL, ROCKWELL C-55
SHAFT: 416 STAINLESS STEEL
O-RINGS: 300 SERIES STAINLESS STEEL
HARDWARE: 300 SERIES STAINLESS STEEL
PAINT: POWDER COAT
UPPER BEARING: SINGLE ROW, BALL
OIL
RADIAL & THRUST
LOWER BEARING: SINGLE ROW, BALL
OIL
RADIAL & THRUST
LOAD: RADIAL
NEMA 1 - SINGLE PHASE TORQUE CURVE, OIL-FILLED, SQUIRREL CAGE INDUCTION (INCLUDES OVERLOAD PROTECTION IN THE MOTOR)
NEMA 9 - THREE PHASE TORQUE CURVE
CLASS F

SINGLE PHASE:
CAPACITOR START/CAPACITOR RUN

Curve



GREEN ENGINEERING
WATER, WASTEWATER, SURVEYING, PLANNING, PROJECT MANAGEMENT
NORTH CAROLINA FIRM LICENSE: P-0115
303 GOLDSBORO STREET EAST, P.O. BOX 609 WILSON, N.C. 27893
TEL (252) 237-5365 FAX (252) 243-7489 OFFICE@GREENENG.COM

BUNNLEVEL

HARMONY BAPTIST CHURCH
3566 NC 210 S. BUNNLEVEL, NC 28323

HARNETT COUNTY, NORTH CAROLINA

**NEW FELLOWSHIP HALL
AND PUMP STATION**

REVISION	DATE	BY	DATE: May 19, 2025	GRAPHIC SCALE	CLIENT CODE: XXXXX
100YR FLOOD LINE	05/19/25	XX			JOB NUMBER: XX-XXX
					FIELD BOOK: XXX
					CADFILE: HARMONY CHURCH
					ASCII FILE:
					LAST MODIFIED: 19-May-25
					MODIFIED BY: XXX
					SHEET NO. 1 OF 2