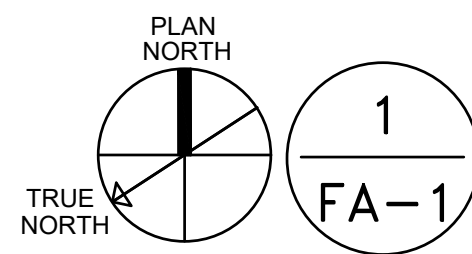
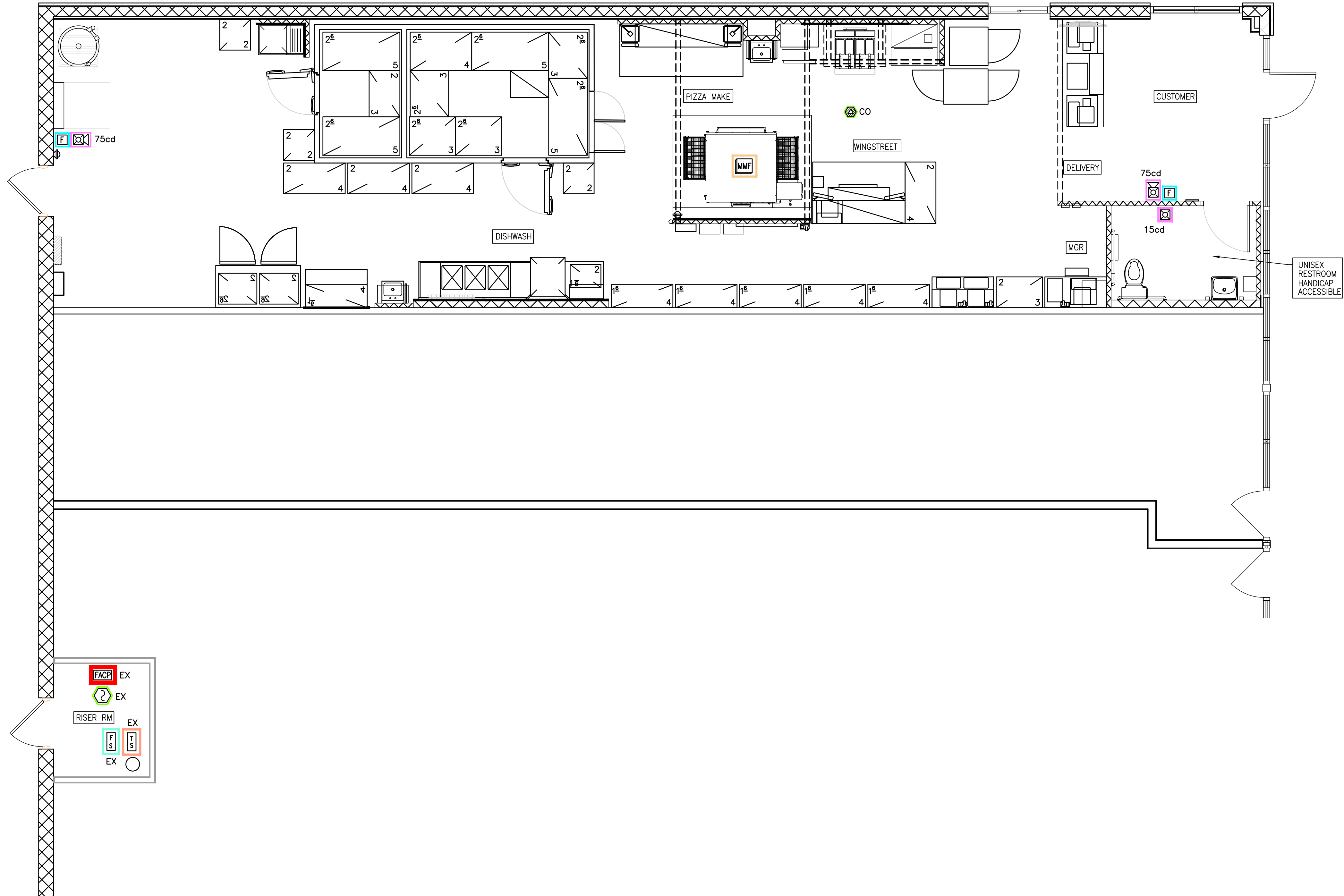
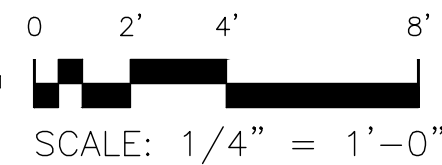


Drawing File: J:\2025\Pizza Hut (Linden) FA Plan\Pizza Hut-FA-16Jun25-BLDG.dwg  
Printed Date: Jun 16, 2025 - 2:17pm



## FIRE ALARM PLAN - FLOOR PLAN

TENANT GSF = 1,625



THIS BUILDING IS FULLY PROTECTED BY FIRE SPRINKLERS

PROJECT:

**FIRE ALARM PLAN: PIZZA HUT STORE #42473**  
185 MITTIE HADDOCK DRIVE SPOUT SPRINGS, NC. 28368

SHEET:

**FIRE ALARM - FLOOR PLAN**

FINAL DRAWING ☐ FOR REVIEW PURPOSES ONLY  
PRELIMINARY ☐ FOR DESIGN DEVELOPMENT ONLY  
FINAL DRAWING ☒ FOR CONSTRUCTION

DESIGNED / CHECKED BY:

**B. JENKINS**

DRAWN BY:

**MAW**

PROJECT #:

**2025-06-08**

DATE:

**16 JUN 25**

OWNER/TENANT:

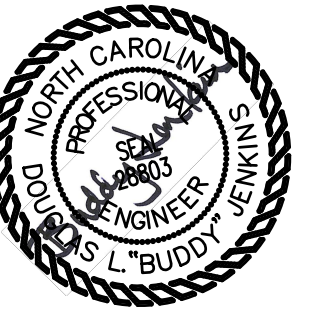
**PIZZA HUT**

185 MITTIE HADDOCK DRIVE SPOUT SPRINGS

CONTRACTOR/BUILDER:

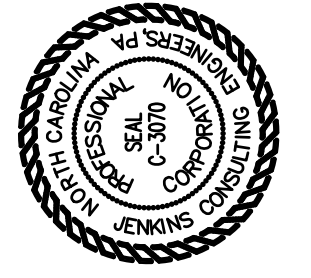
**DUNRITE, INC. C/O MATTHEW KELLY**

714 FENWAY AVE. CHESAPEAKE, VA 23323

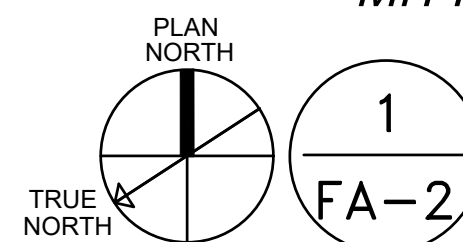
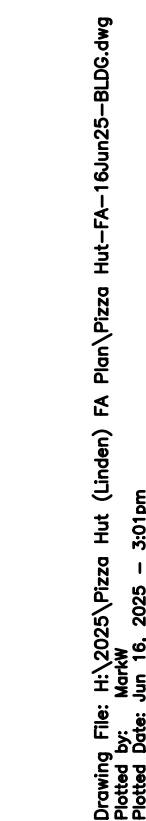


16 June 2025

**B. JENKINS**  
CONSULTING ENGINEERS, P.A.  
OFFICE: EUREKA SPRINGS, NORTH CAROLINA  
NORTH CAROLINA CORPORATION NUMBER: C-3070  
OFFICE No. 910.822.1724







**N.T.S.**

MS-10UD-7 Battery Calculation										
Secondary Power Source Requirements										
		Secondary Non-Alarm Current (amps)			Secondary Alarm Current (amps)					
Device Type	Qty	Current Draw	=	Total	Qty	Current Draw	=	Total		
<b>1. System</b>										
Main Circuit Board	1	x	0.133000	=	0.133000	1	x	0.282000	=	0.282000
4XTMF	0	x	0.005000	=		0	x	0.011000	=	
CAC-5X	0	x	0.001000	=		0	x	0.001000	=	
IPDACT-2	0	x	0.093000	=		0	x	0.136000	=	
IPDACT-2UD	0	x	0.098000	=		0	x	0.155000	=	
<b>2. Annunciators</b>										
ANN-80	0	x	0.015000	=		0	x	0.049000	=	
ANN-RLY	0	x	0.015000	=		0	x	0.075000	=	
ANN-I/O	0	x	0.035000	=		0	x	0.200000	=	
ANN-I/O LEDs	0	x	0.000000	=		0	x	0.010000	=	
ANN-S/P/G	0	x	0.045000	=		0	x	0.045000	=	
ANN-R/LED	0	x	0.028000	=		0	x	0.068000	=	
<b>3. Conventional Detection</b>										
Two-Wire Detector Heads	1	x	0.000050	=	0.000050					
Four-Wire Detector Heads	0	x	0.000000	=						
Number of IDC's Used Minus 1						0	x	0.040000	=	
<b>4. Other Devices</b>										
EOLR-1	0	x	0.020000	=		0	x	0.020000	=	
Miscellaneous Device 1	0	x	0.000000	=		0	x	0.000000	=	
Miscellaneous Device 2	0	x	0.000000	=		0	x	0.000000	=	
Miscellaneous Device 3	0	x	0.000000	=		0	x	0.000000	=	
Miscellaneous Device 4	0	x	0.000000	=		0	x	0.000000	=	
Miscellaneous Device 5	0	x	0.000000	=		0	x	0.000000	=	
<b>5. Notification Appliances</b>										
NAC 1						15	x	0.107000	=	1.605000
NAC 2						2	x	0.054000	=	0.108000
NAC 3						0	x	0.000000	=	
NAC 4						0	x	0.000000	=	
Current Draw from TB9 (nonalarm)	0	x	0.000000	=		0	x	0.000000	=	
Total Standby Load					0.133050	Total Alarm Load				1.995000



- PROGRAM AS SUPERVISORY UNLESS OTHERWISE REQUIRED BY LOCAL AHJ TO BE A GENERAL ALARM.

### MOUNTING HEIGHTS (TYPICAL)

ALL FIRE ALARM EQUIPMENT TO MEET NFPA 72  
THE FIRE ALARM SYSTEM SHOWN HERE DEPICTS A CLASS "B" SYSTEM  
EXISTING FIRE ALARM CONTROL PANEL IS A FIRE-LITE MS-10UD  
PROVIDE ADDITIONAL ZONE MODULES AS REQ'D FOR THE ADDITIONAL DEVICES

FIRE ALARM CONTRACTOR WILL TEST AND INSPECT NEW SYSTEM WITH LOCAL AUTHORITIES.

~~THIS BUILDING IS FULLY PROTECTED BY FIRE SPRINKLERS~~



PROJECT: FIRE ALARM PLAN: PIZZA HUT STORE #42473  
185 MITTIE HADDOCK DRIVE SPOUT SPRINGS, NC. 28368  
HEET: FIRE ALARM RISER/NOTES/BATT CALCS/MATRIX

FA-2