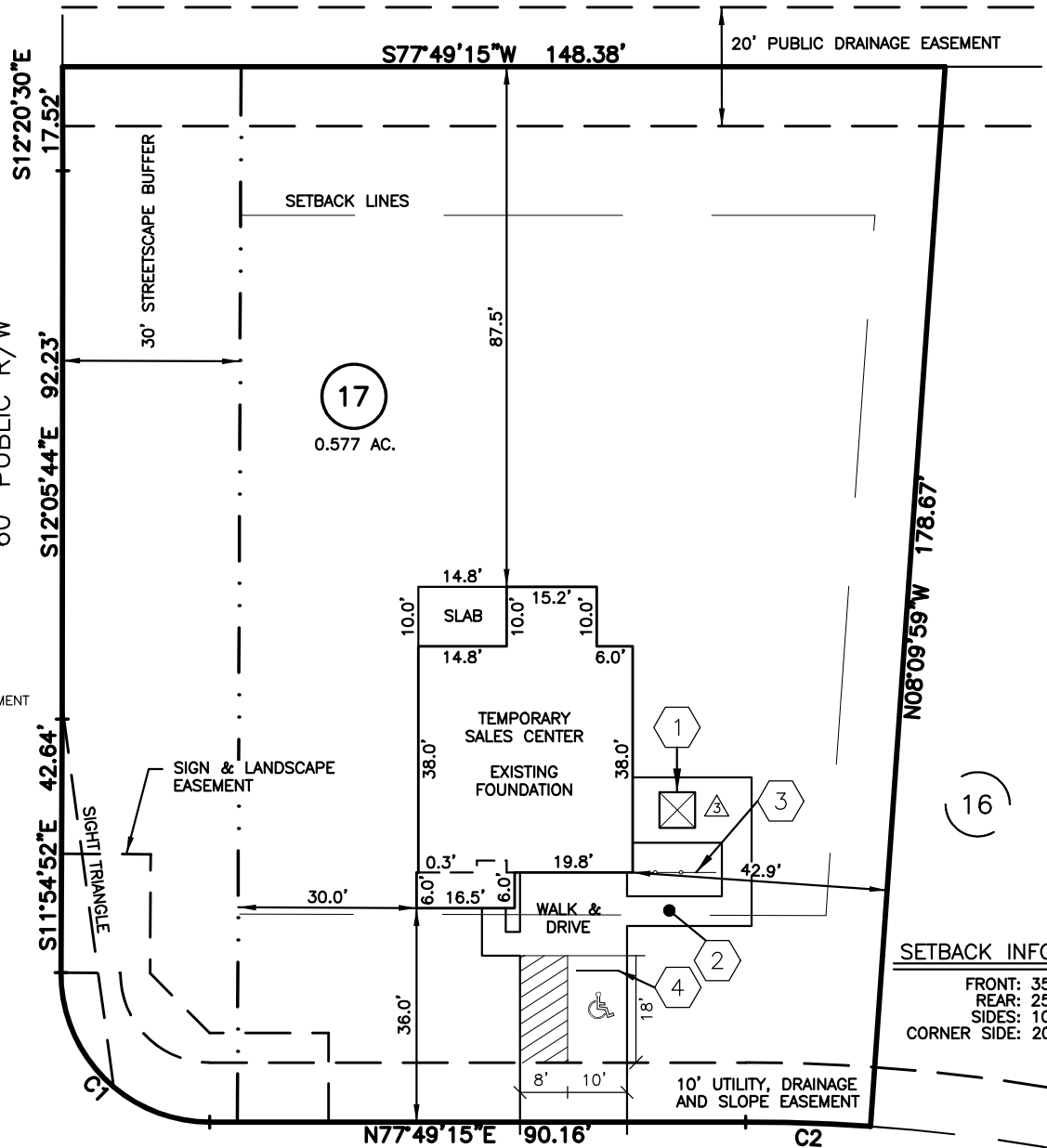


SITE PLAN FOR
NEW HOME, INC.
 21 WHISTLING WAY
 LOT 17, HERITAGE AT NEILL'S CREEK SUBDIVISION
 NEILL'S CREEK TOWNSHIP, HARNETT COUNTY, NORTH CAROLINA



(1A)

B.M. 2023, PG 438



LEGEND

- AIR CONDITIONER
- BACK OF CURB
- BACK FLOW PREVENTER
- CLEANOUT
- CURB INLET
- DRILL HOLE SET
- EXISTING CONCRETE MONUMENT
- EXISTING DRILL HOLE
- EXISTING IRON STAKE
- EXISTING IRON PIPE
- ELECTRIC METER
- EXISTING PK NAIL
- ELECTRIC STUB
- FLARED END SECTION
- FIRE HYDRANT
- FIBER OPTIC PEDESTAL
- GAS METER
- GUY
- INVERT
- IRON PIPE SET
- IRON ROD SET
- LIGHT POLE
- MAGNETIC NAIL SET
- MANHOLE SANITARY SEWER
- MANHOLE STORM SEWER
- OVERHEAD WIRES
- PK NAIL SET
- POINT NOT SET
- RAIL ROAD SPIKE
- TELEPHONE PEDESTAL
- TRANSFORMER
- CABLE TV PEDESTAL
- UTILITY POLE
- WATER METER
- WATER VALVE
- YARD INLET
- FIELD MEASUREMENT
- REVISION TRIANGLE
- NEW WATER METER

SETBACK INFO

FRONT:	35'
REAR:	25'
SIDES:	10'
CORNER SIDE:	20'

- 1 ADA COMPLIANT PORTABLE TOILET
- 2 5' ADA COMPLIANT CONCRETE SIDEWALK
- 3 VINYL FENCE
- 4 CURB STOP

IMPERVIOUS SURFACES	S.F.
HOUSE	1,620
WALK & DRIVE	850
PORCH	150
SUBTOTAL	2,620
ADA (SEE NOTE 1)	330
TOTAL	2,950

CURVE	RADIUS	ARC LENGTH	CHORD LENGTH	CHORD BEARING	DELTA ANGLE
C1	25.00'	39.39'	35.44'	N57°02'48"W	90°15'53"
C2	300.00'	21.01'	21.01'	S79°49'38"W	4°00'46"

REFERENCES:
 B.M. 2023, PG. 520-521



NOTES

1. ADA IMPERVIOUS TO BE REMOVED WHEN CONVERTED FROM SALES CENTER.

THIS IS A SITE PLAN AS DEFINED BY G.S. 160D-102 AND IS NOT INTENDED TO BE ATTACHED TO ANY INSTRUMENT RECORDED IN THE REGISTER OF DEEDS OFFICE

HANDICAP PARKING & PORTABLE TOILET ADDED

SITE PLAN
 NOT FOR RECORDATION,
 CONVEYANCE OR SALES

REV CODE: 1.FLIP, 2.PLAN, 3.ROTATE, 4.MOVE, 5.SS
 6.SEVERAL OF ABOVE, 7.LAND FEATURE, 8. OTHER

REV3: JAN. 15, 2025(7)
 DATE: OCT. 30, 2023

F.B. _____

RWK, PA
ENGINEERING ~ SURVEYING
 CORPORATE LICENSE: C-1771
 101 W. MAIN ST., SUITE 202
 GARNER, NC 27529
 PHONE (919) 779-4854
 FAX (919) 779-4056