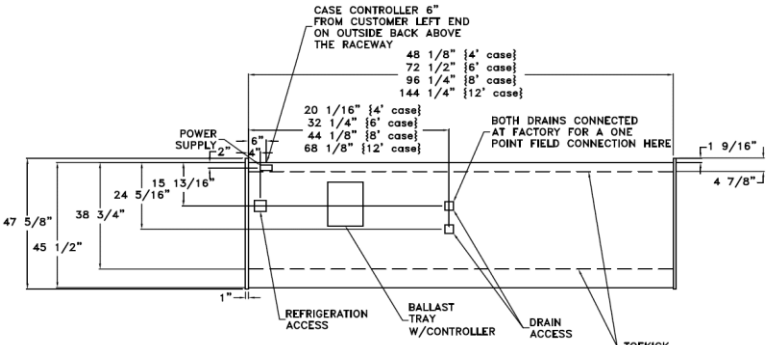


SECTION



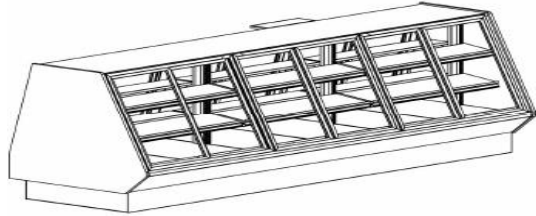
PLAN

APPLICATION: **DELI**

AVERAGE PRODUCT TEMP (°F)	38
---------------------------	-----------

ENERGY DATA

TDA (ft³)/ft	USABLE CUBE (ft³)/ft	CDEC (ACTUAL) (kWh/day)/ft	CDEC (DOE LIMIT) (kWh/day)/ft
4.31	3.56	0.5625	1.91



REFRIGERATED CASE DATA (DX):

CASE LENGTH	CAPACITY CONVENTIONAL (MBH)	CAPACITY PARALLEL (MBH)	EVAP TEMP (°F)	DISCHARGE AIR			SUPERHEAT SETPOINT (°F)	AVG REF CHARGE (LB)
				TEMP (°F)	VELOCITY (fpm)	FAN SPEED (rpm)		
4'	3.184	2.788	24	30	330	1200	10	3.2
6'	4.776	4.182	24	30	330	1200	10	4.8
8'	6.368	5.576	24	30	330	1200	10	6.4
12'	9.552	8.364	24	30	330	1200	10	9.6

ELECTRICAL DATA:

CASE LENGTH	# FANS/ CASE	FANS (120 Volt)				LED LIGHTING (120 Volt)					
		UNADA MOTOR		CANOPY LIGHTS (2 ROWS)		NOSE LIGHTS		SHELF LIGHTS (2 ROWS)		TOTAL LIGHTS	
		AMPS	WATTS	AMPS	WATTS	AMPS	WATTS	AMPS	WATTS	AMPS	WATTS
4'	2	0.6	72	0.24	28.8	NA	NA	0.1	12	0.34	40.8
6'	4	1.2	144	0.4	48	NA	NA	0.16	19.2	0.56	67.2
8'	4	1.2	144	0.48	57.6	NA	NA	0.2	24	0.68	81.6
12'	6	1.8	216	0.72	86.4	NA	NA	0.3	36	1.02	122.4

CASE LENGTH	ANTI-SWEAT HEATER		DRAIN PAN HEATER		DEFROST HEATER	
	AMPS	WATTS	AMPS	WATTS	AMPS	WATTS
4'	NA	NA	NA	NA	NA	NA
6'	NA	NA	NA	NA	NA	NA
8'	NA	NA	NA	NA	NA	NA
12'	NA	NA	NA	NA	NA	NA

DEFROST DATA:

DEFROST TYPE	DEFROSTS PER DAY	DURATION TIME (MIN)	TERMINATION TEMP (°F)	PUMP OUT (MIN)	DRIP TIME (MIN)	TERMINATION TEMP SENSOR LOCATION	DEFROST WATER (LB/DAY)/FT
TIMED-OFF	6	40	45	NA	NA	20" from left end panel, 6" from coil	0.5

- NOTES:**
- Energy of kWh per Day/ per foot based on shelf/peg configuration.
 - Bottom Piping ONLY
 - The condensate drain size is 1 1/2".
 - Outlet for Scale stands comes with a Simplex outlet

CONTROL INFORMATION:

CASE LENGTH	TXV Size	PWM Size	Qty Coils	Qty Controllers	Qty Valves
4	EG-1/3	SPW-2	1	1	1
6	EG-1/2	SPW-3	1	1	1
8	EG-3/4	SPW-4	1	1	1
12	EG-1	SPW-5	1	1	1