

































CAUTION
WARNING: TO PREVENT ELECTRIC SHOCK, DISCONNECT ALL POWER SOURCES FROM THE SYSTEM AND UNGROUNDED AND MAY BE ENERGIZED.

WARNING ELECTRIC SHOCK HAZARD. THE DC CONDUCTORS OF THIS PHOTOVOLTAIC SYSTEM ARE UNGROUNDED AND MAY BE ENERGIZED.

AVERTISSEMENT
RISQUE DE CHOC ELECTRIQUE QUAND LE CHAMP PHOTOVOLTAIQUE EST EXPOSE A LA LUMIERE DU JOUR. LA TENSION CC EST FOURNIE A CEI EQUIPEMENT. NE TOUCHER PAS LES SURFACES CHAUDES. NE PAS TOUCHER LE RESEAU DE RETOUR INJECTE PAR LE CONVERTISSEUR EN CAS DE DEFAILLANCE DANS LE MODULE PV EST TOUJOURS NUL.



1100W/3-80V/10A
12.5-125V/14.1A
1V
520223 021001 IFE-EC
P1101-4411YHR/



Wet
15
Sun 105°C
Res

100V

021DCF1FE-EC



Do Not Remove

21DCF1FE-EC



CAUTION

HOT SURFACES-TO REDUCE THE RISK OF BURNS-DO NOT TOUCH. RISK OF ELECTRIC SHOCK-WHEN THE PHOTOVOLTAIC ARRAY IS EXPOSED TO LIGHT, IT SUPPLIES A DC VOLTAGE TO EQUIPMENT. COVER PV MODULE WITH OPAQUE MATERIAL BEFORE CONNECTING OR DISCONNECTING THIS OPTIMIZER. DURING FAULT, ZERO CURRENT IS SOURCED INTO DC ARRAY BY CONVERTER.

WARNING ELECTRIC SHOCK HAZARD. THE DC CONDUCTORS OF THIS PHOTOVOLTAIC SYSTEM ARE UNGROUNDED AND MAY BE ENERGIZED.

AVERTISSEMENT

RISQUE DE CHOC ELECTRIQUE: QUAND LE CHAMP PHOTOVOLTAIQUE EST EXPOSE A LA LUMIERE, UNE TENSION CC EST FOURNIE A CET EQUIPEMENT. SURFACES CHAUDES- NE PAS TOUCHER, AFIN DE REDUIRE LES RISQUES DE BRULURES LE COURANT DE RETOUR INJECTE PAR LE CONVERTISSEUR EN CAS DE DEFAILLANCE DANS LE MODULE PV EST TOUJOURS NUL.









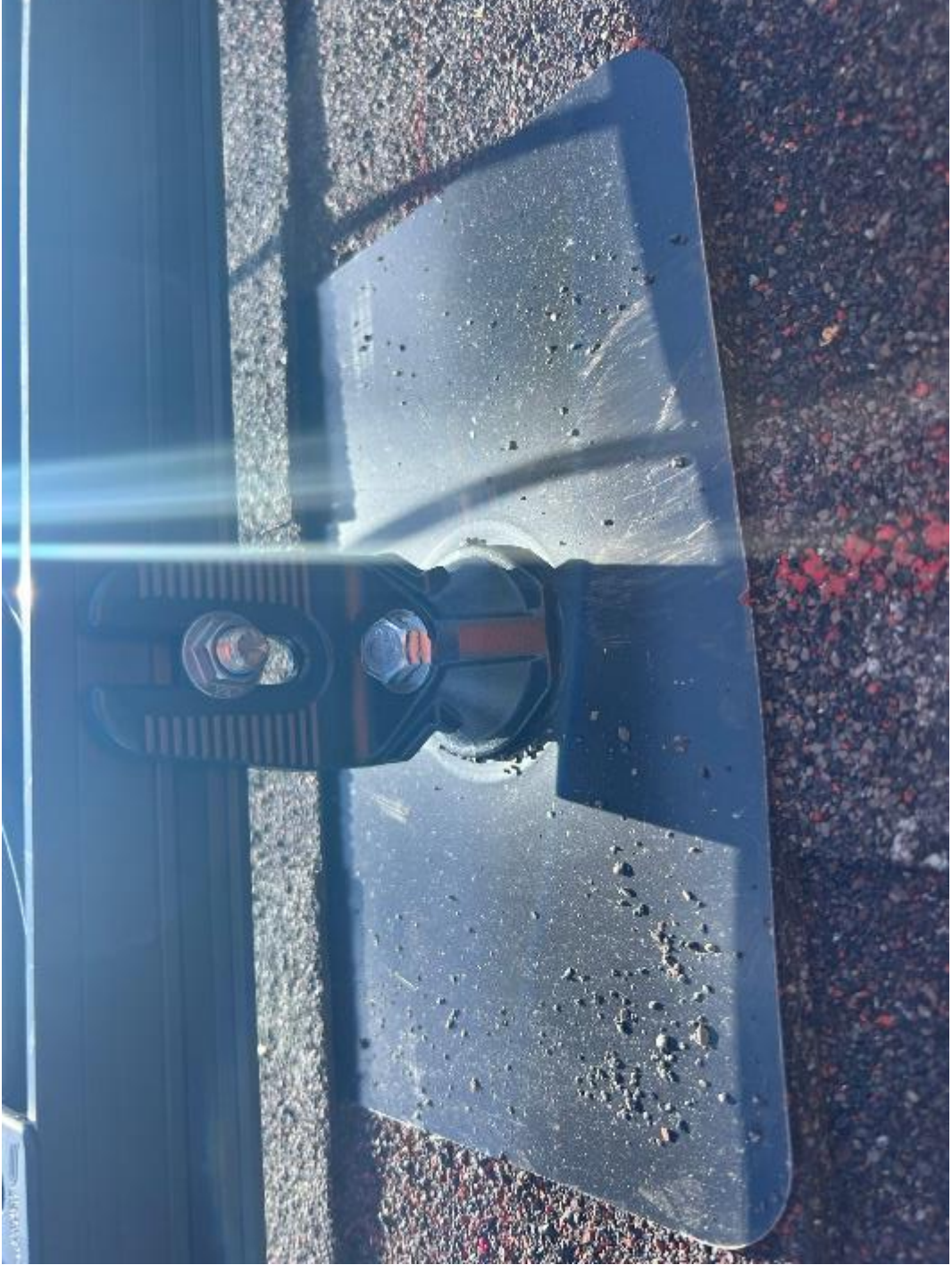




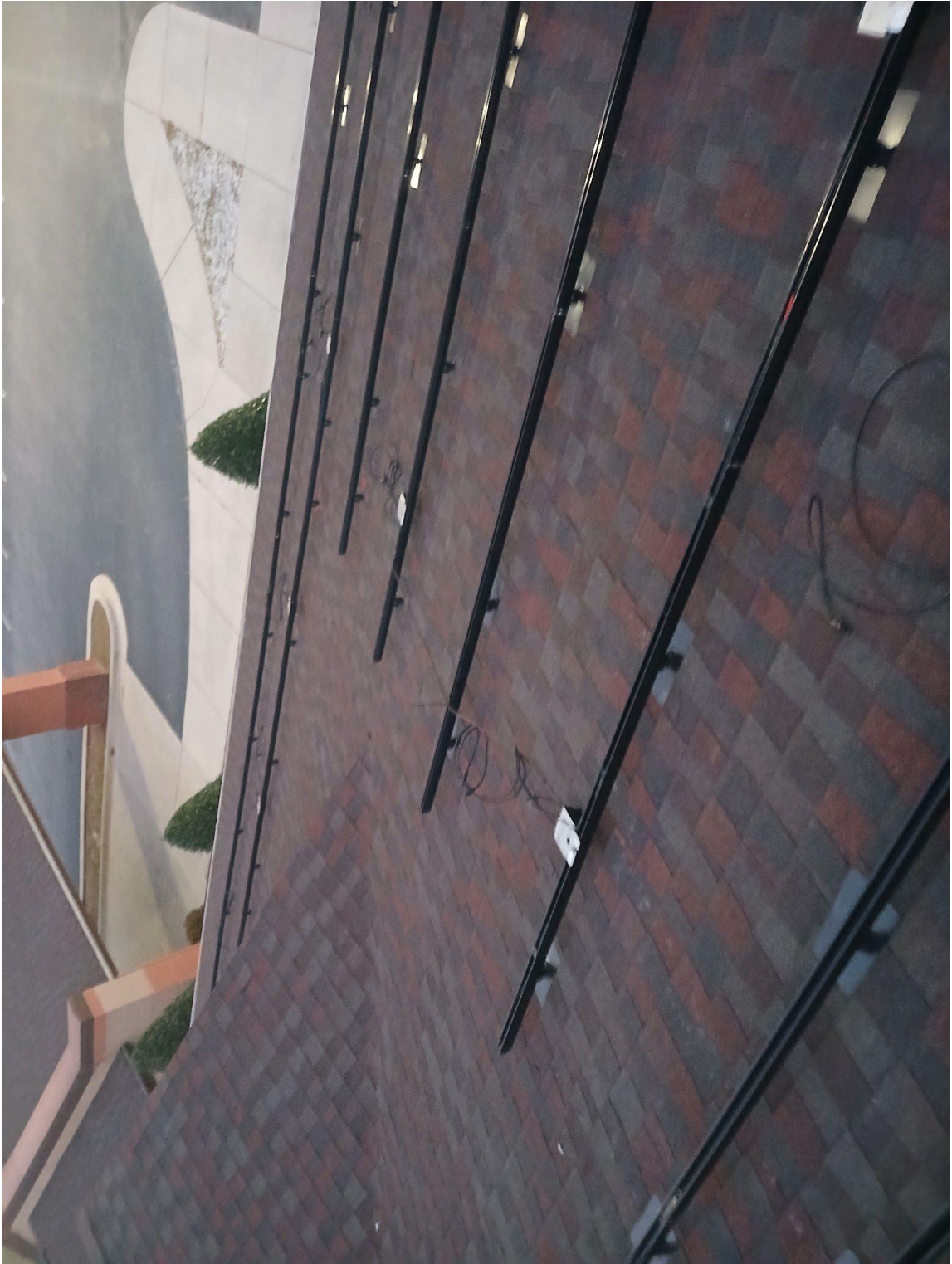




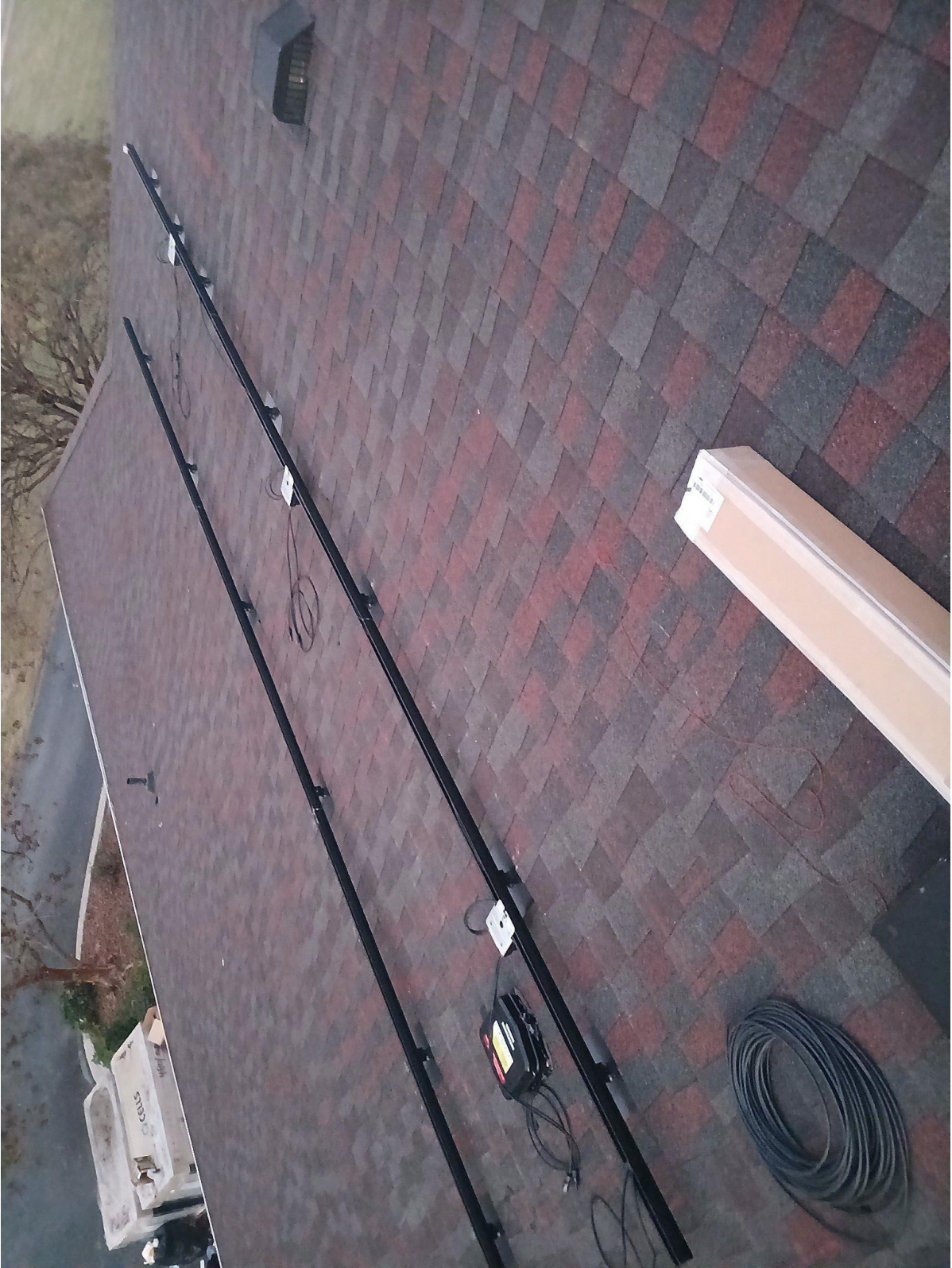








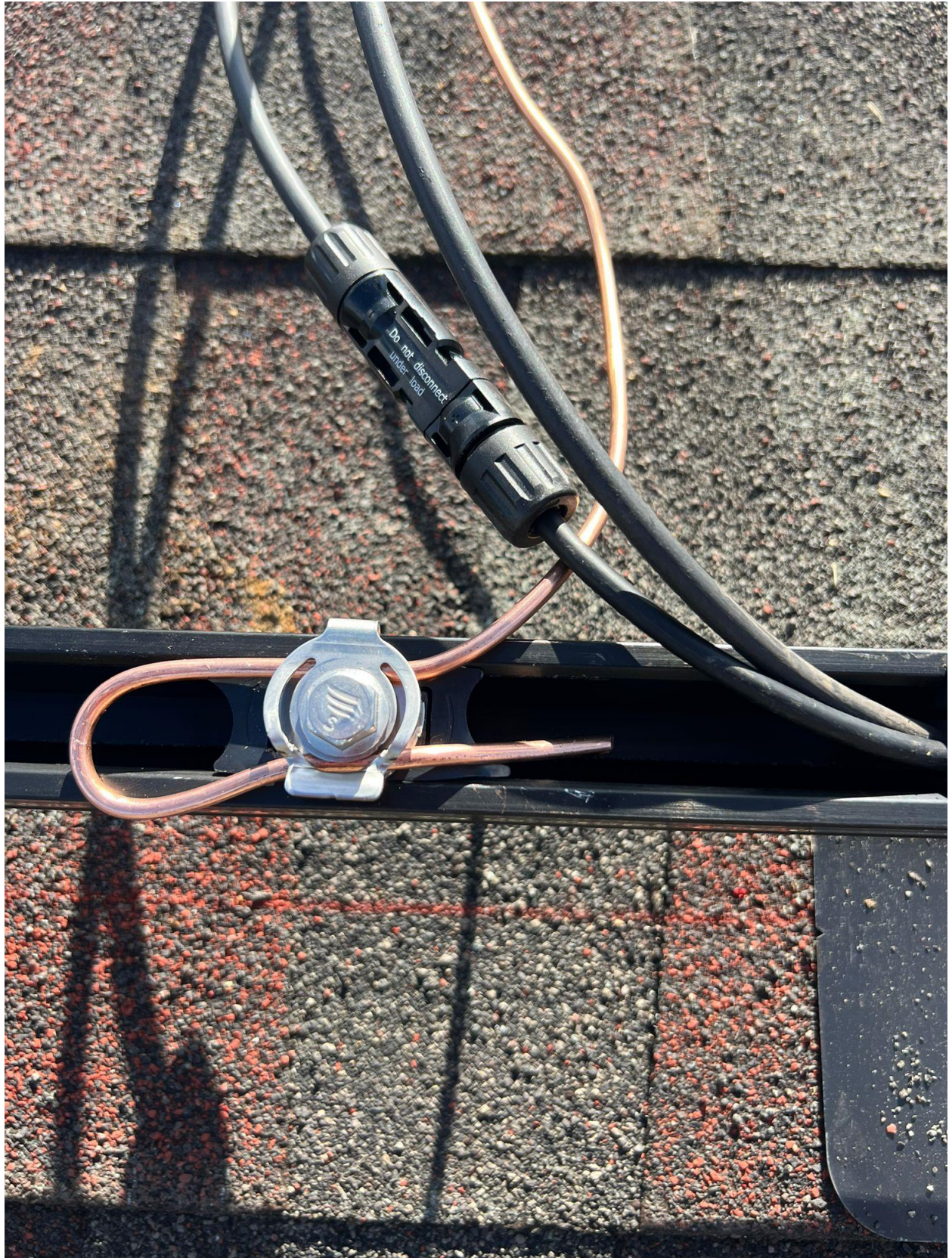


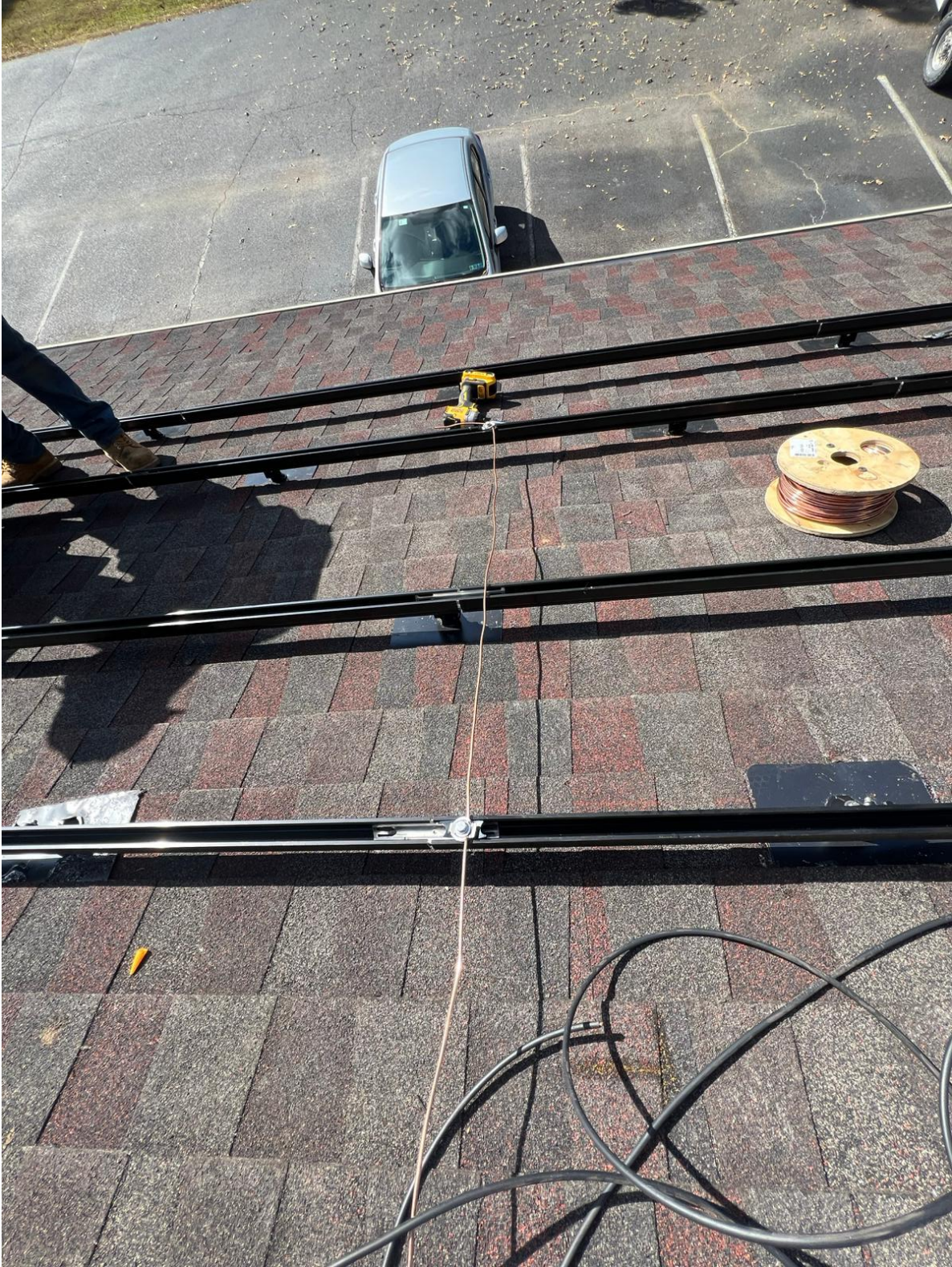




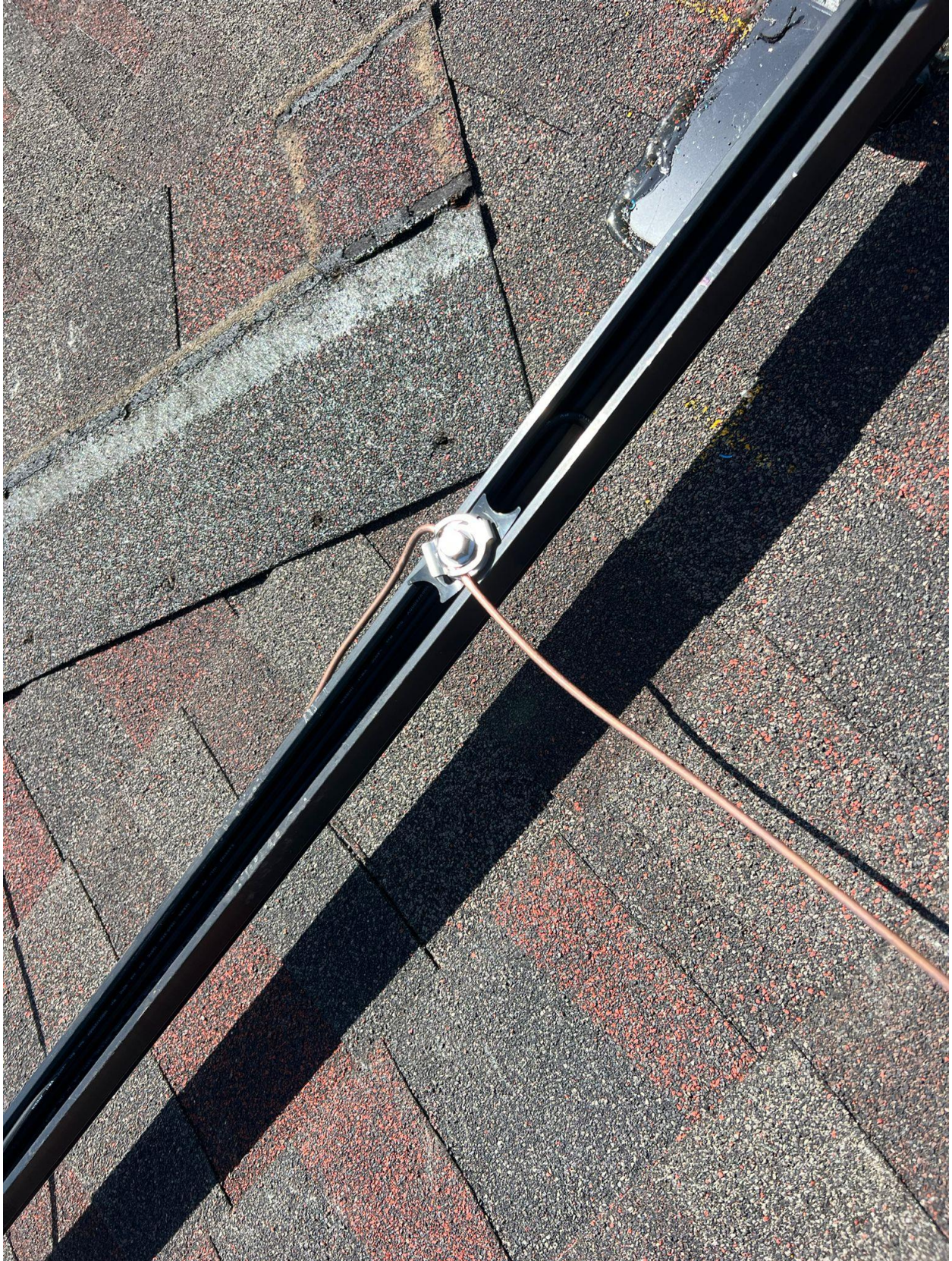




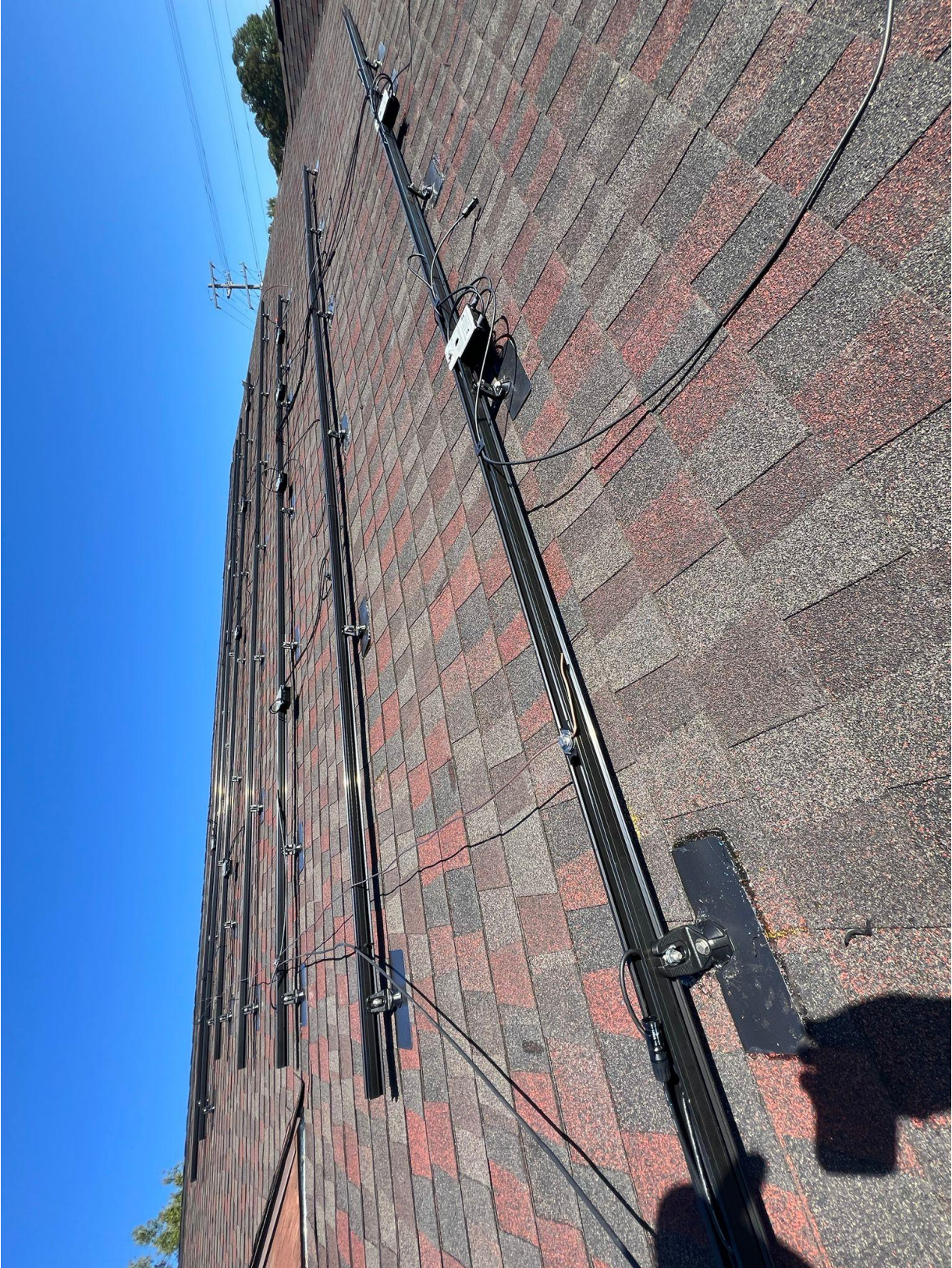






















CAUTION

DO NOT SUBJECT TO EXCESSIVE TENSILE STRESS. THE RISK OF ELECTRIC SHOCK WHEN THE PHOTOVOLTAIC ARRAY IS EXPOSED TO DIRECT SUNLIGHT IS HIGH. THE EQUIPMENT COVER FOR MODULE WITH PHOTOVOLTAIC PANELS SHOULD BE KEPT CLOSED TO PREVENT THE RISK OF ELECTRIC SHOCK WHEN THE PHOTOVOLTAIC ARRAY IS EXPOSED TO DIRECT SUNLIGHT.

WARNING

NEVER TOUCH THE DC CONDUCTORS OF THIS PHOTOVOLTAIC SYSTEM ARE UNGROUNDING AND MAY BE EXTREMELY HOT. DO NOT TOUCH THE DC CONDUCTORS OF THIS PHOTOVOLTAIC SYSTEM WHEN THE PHOTOVOLTAIC ARRAY IS EXPOSED TO DIRECT SUNLIGHT. IN THE EVENT OF A SHORT CIRCUIT, THE PHOTOVOLTAIC ARRAY CAN BECOME VERY HOT. IN THE EVENT OF A SHORT CIRCUIT, THE PHOTOVOLTAIC ARRAY CAN BECOME VERY HOT. IN THE EVENT OF A SHORT CIRCUIT, THE PHOTOVOLTAIC ARRAY CAN BECOME VERY HOT.

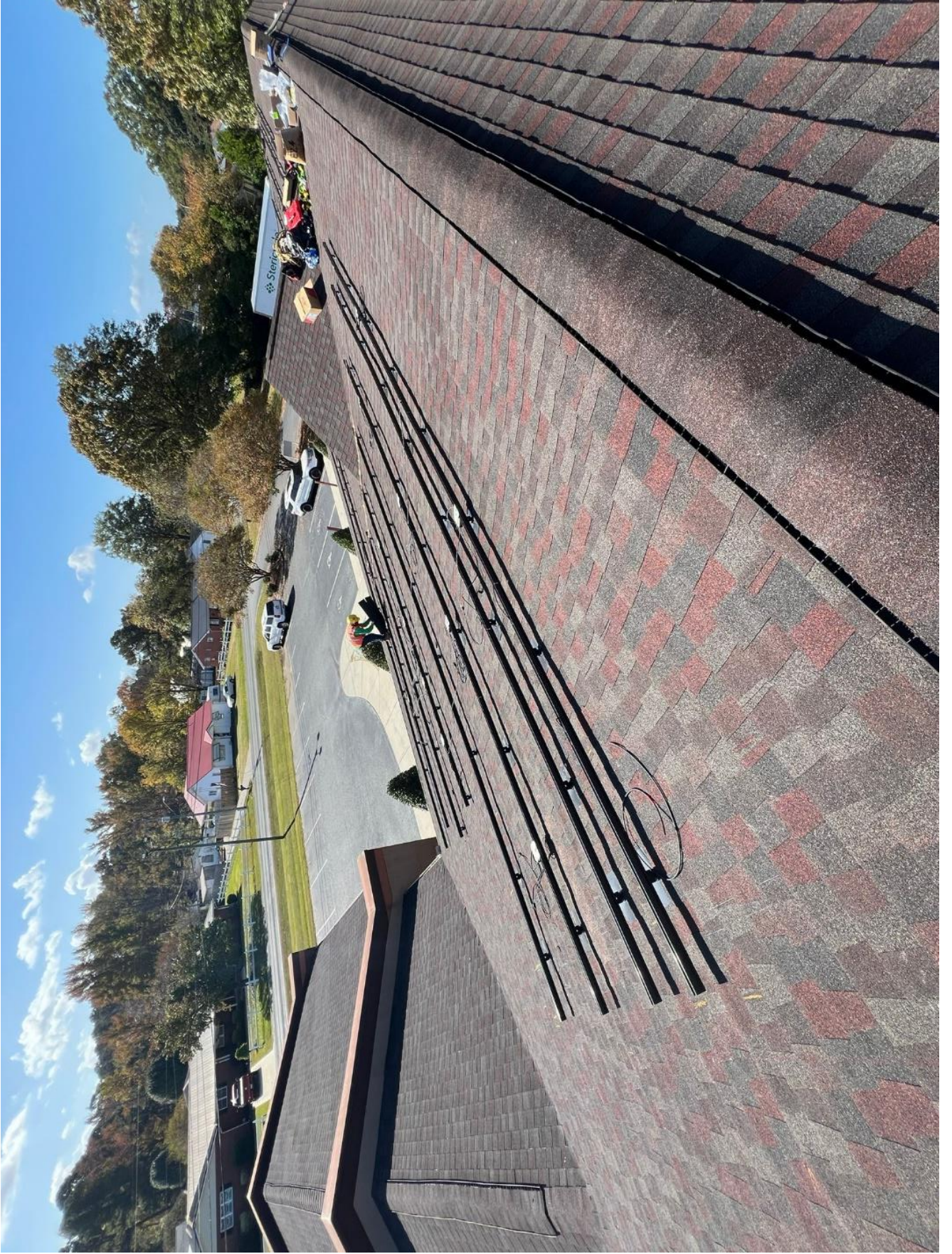
AVERTISSEMENT

NE PAS TOUCHER LES CONDUCTEURS EN COURANT DE CE SYSTÈME PHOTOVOLTAÏQUE. LES CONDUCTEURS EN COURANT PEUVENT ÊTRE TRÈS CHAUDS. NE PAS TOUCHER LES CONDUCTEURS EN COURANT DE CE SYSTÈME PHOTOVOLTAÏQUE LORSQUE LES PANNEAUX PHOTOVOLTAÏQUES SONT EXPOSÉS À LA LUMIÈRE DIRECTE DU SOLEIL. EN CAS DE DÉFAILLANCE D'UN TÉNÉRIE PHOTOVOLTAÏQUE, LES PANNEAUX PHOTOVOLTAÏQUES PEUVENT DEVENIR TRÈS CHAUDS.

Do Not Remove
210779648
405080

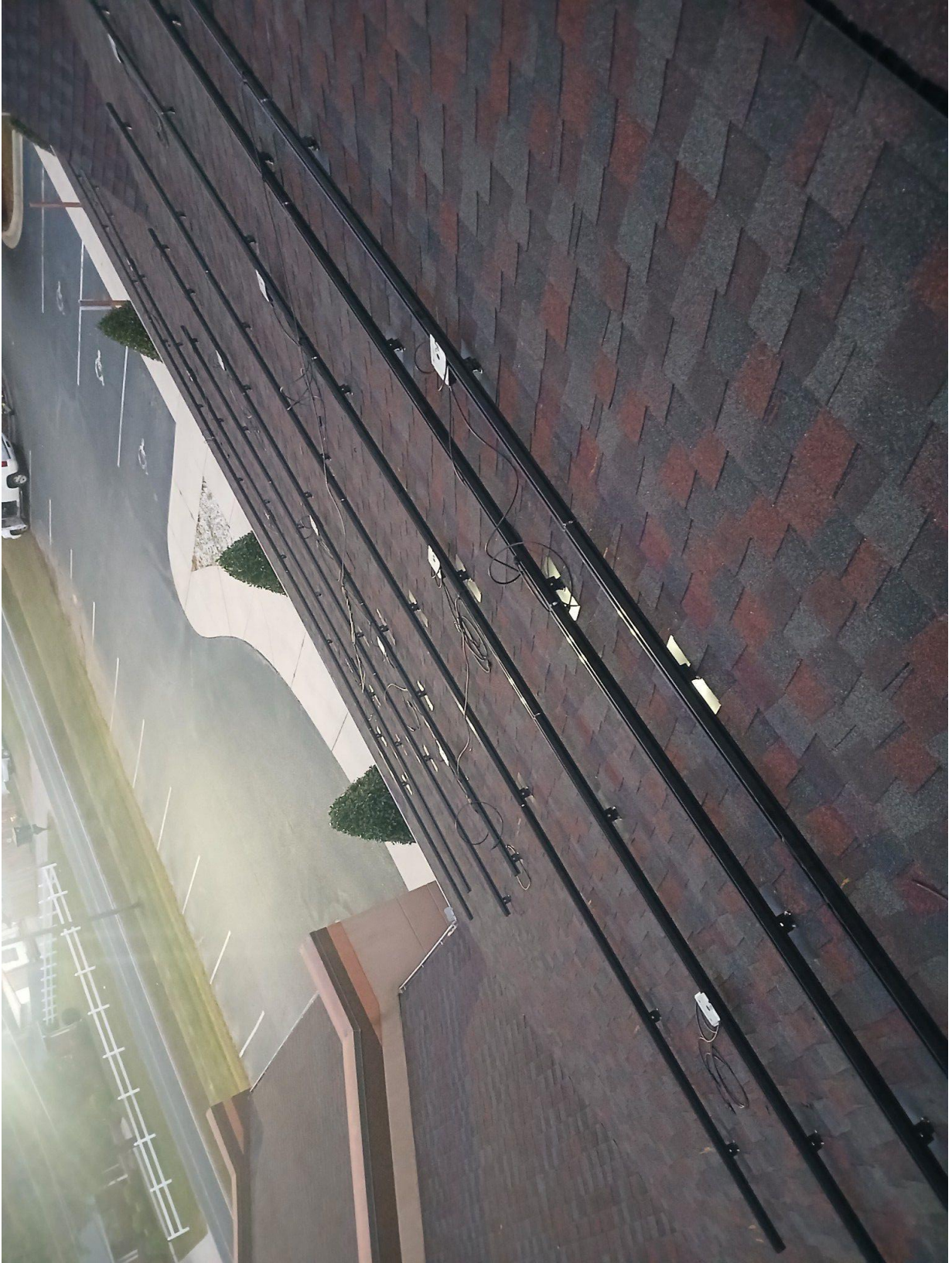








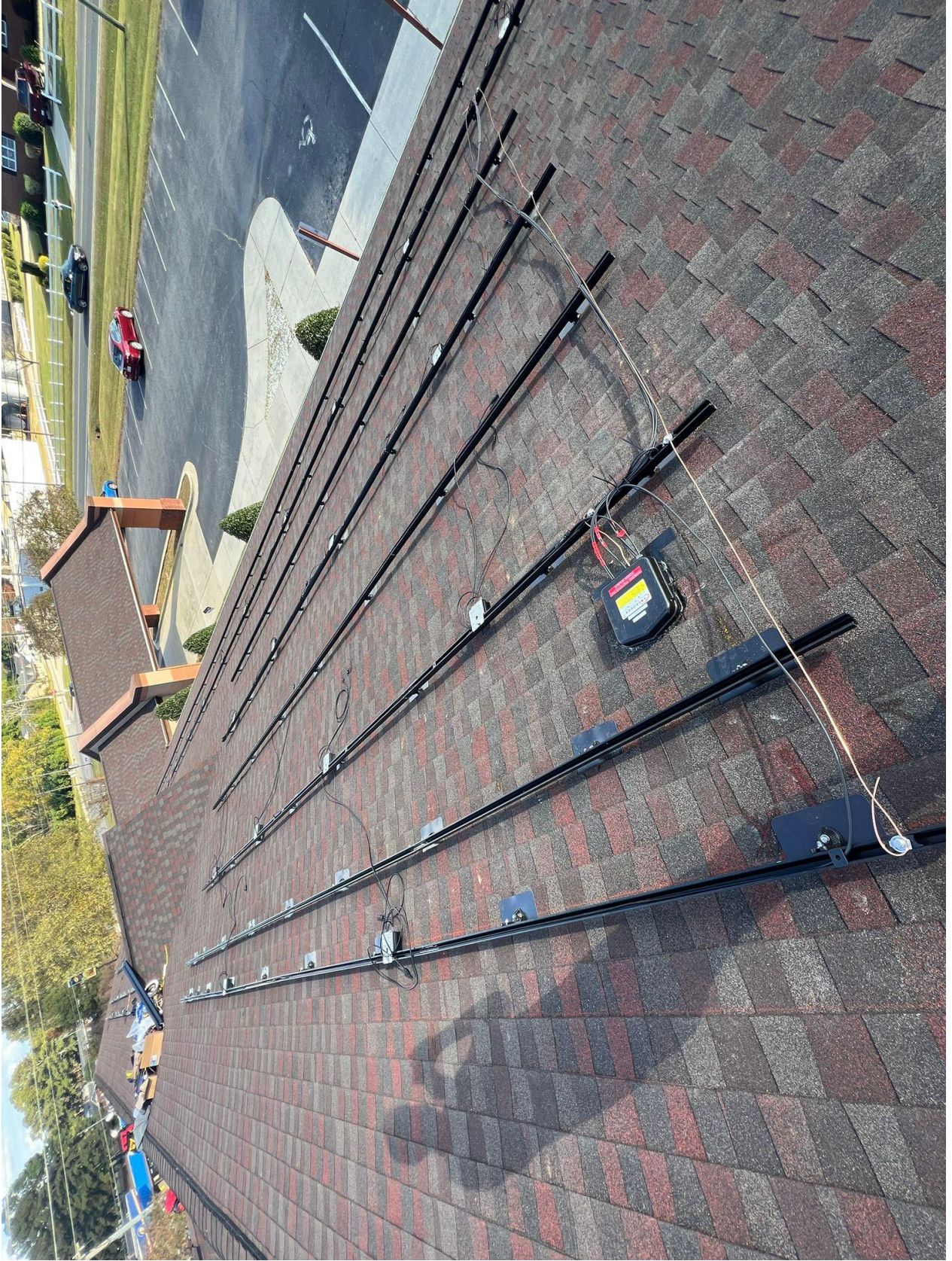




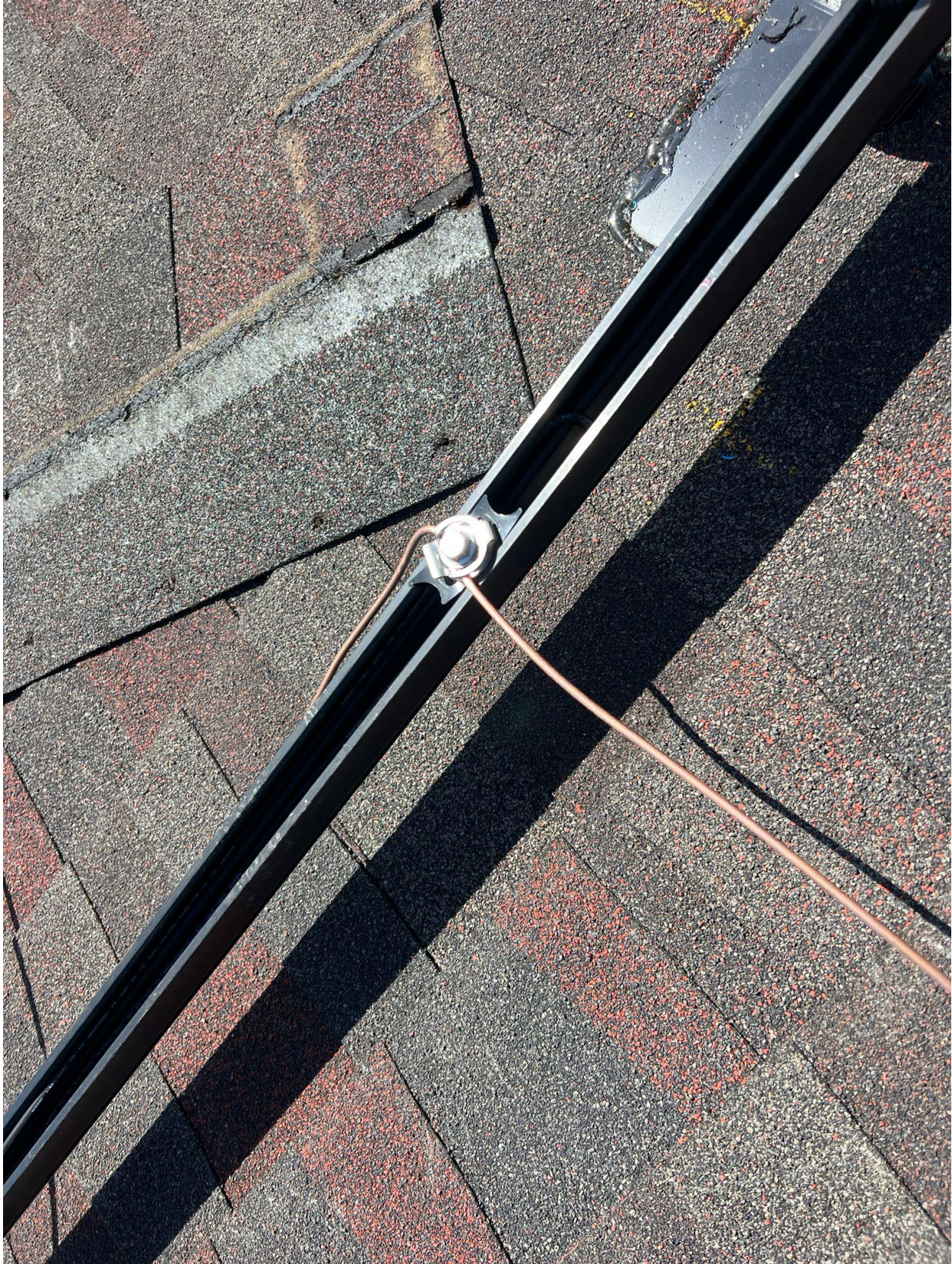


Crop

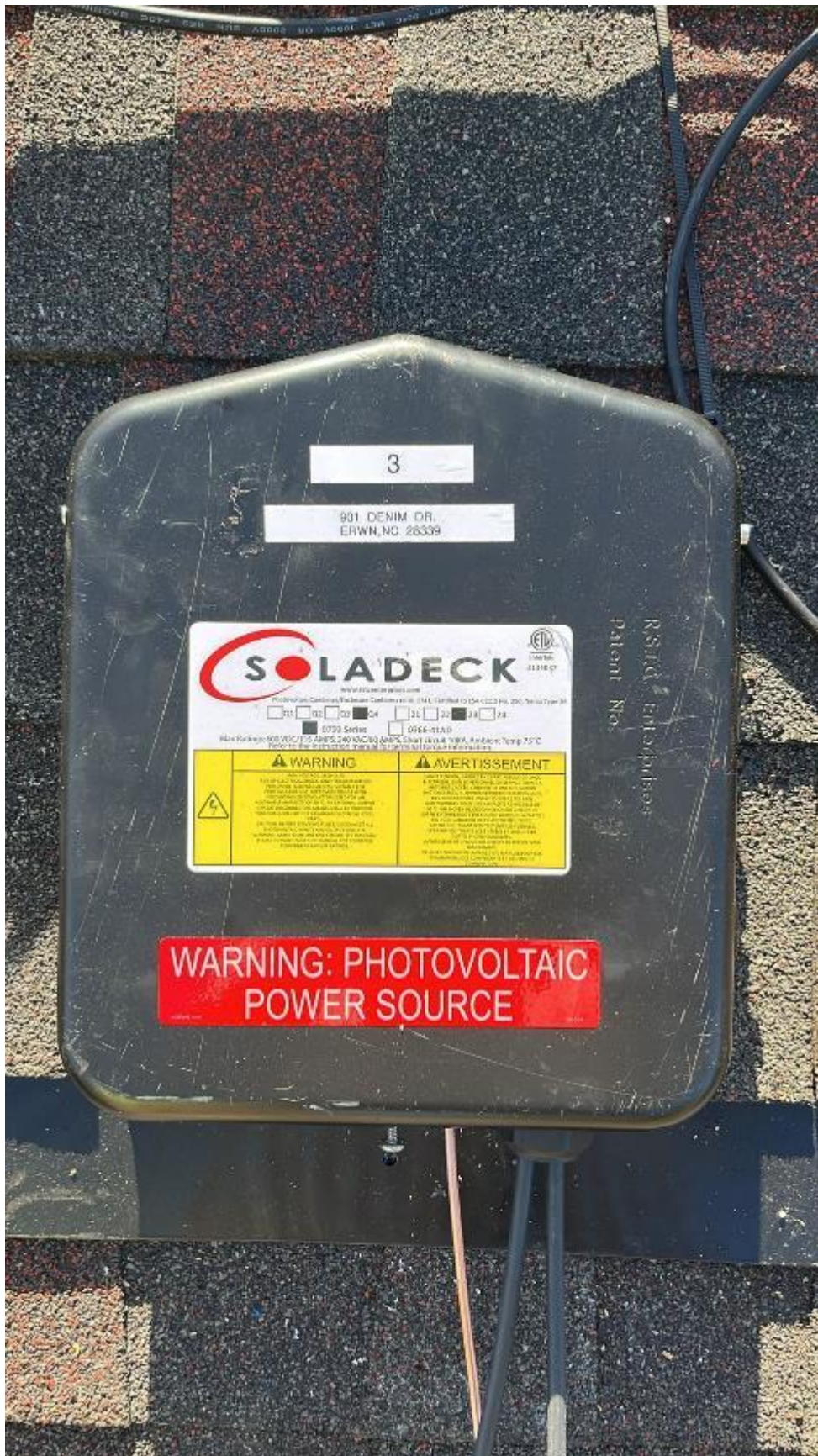














3

901 DENIM DR.
ERWIN, NC 28339

SOLADECK 
www.soladeck.com
Photovoltaic Converter/Inverter Conforms to UL 1741, Certified to CSA C22.2 No. 250, Type 1
 51 52 53 54 55 56 57
 0793 Series 0764-11A-D
Model Number: 500 (500) 110 AMP/5, 240 (240) AMP/5, 300 (300) AMP/5, 360 (360) AMP/5, Ambient Temp: 75°C
Voltage: 120VAC/240VAC
Power: 1000W/2000W
Safety: Class II, 250VAC/10A/500VA

 WARNING	 AVERTISSEMENT
<p>Read and understand the instructions before using this product. Failure to do so may result in personal injury, property damage, or equipment damage. The manufacturer is not responsible for any damage or injury caused by the use of this product. The manufacturer is not responsible for any damage or injury caused by the use of this product. The manufacturer is not responsible for any damage or injury caused by the use of this product.</p>	<p>Lire attentivement et comprendre les instructions avant d'utiliser ce produit. Le non-respect de ces instructions peut entraîner des blessures personnelles, des dommages matériels ou des dommages à l'équipement. Le fabricant n'est pas responsable des dommages ou blessures causés par l'utilisation de ce produit. Le fabricant n'est pas responsable des dommages ou blessures causés par l'utilisation de ce produit. Le fabricant n'est pas responsable des dommages ou blessures causés par l'utilisation de ce produit.</p>

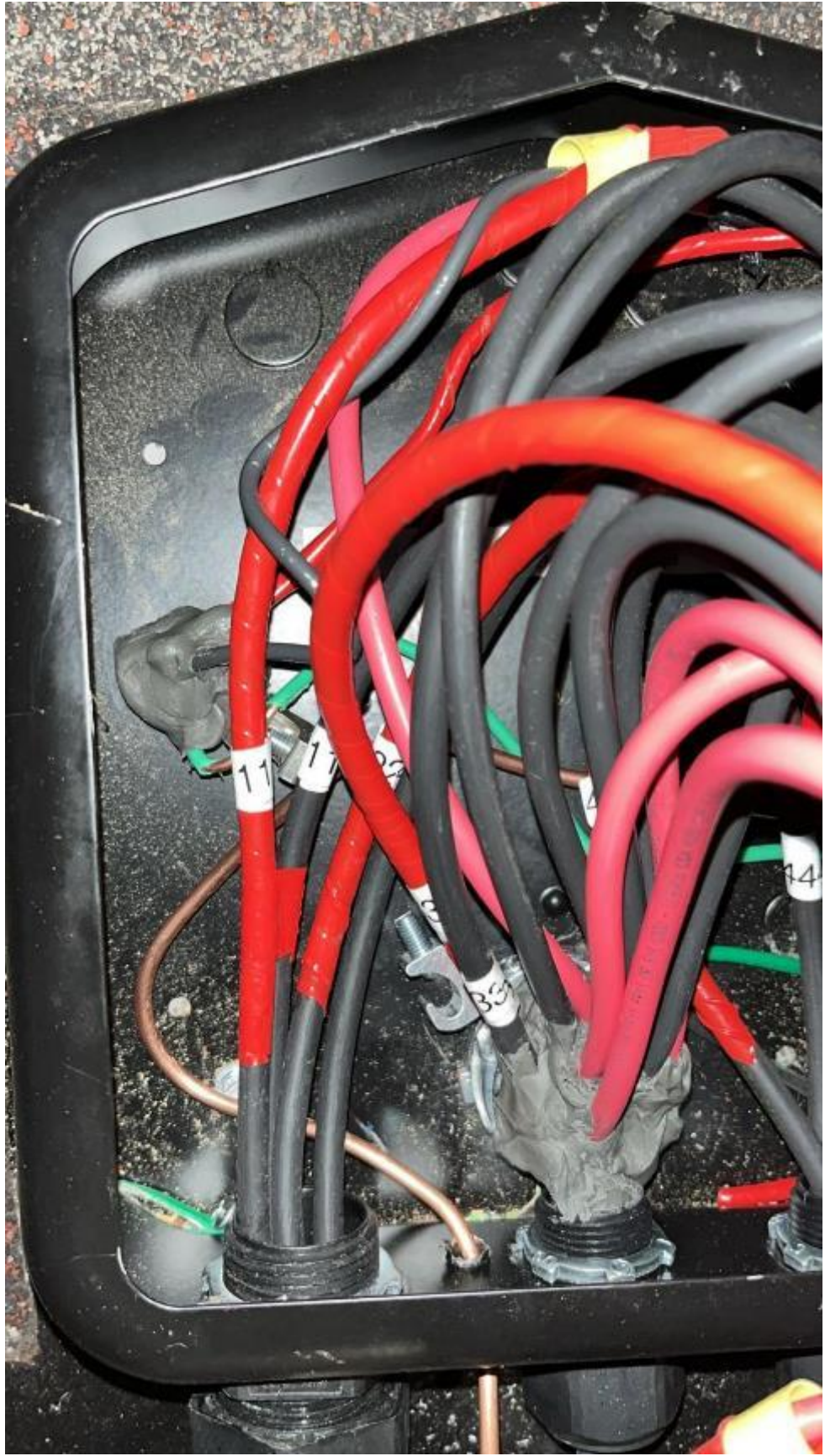
WARNING: PHOTOVOLTAIC POWER SOURCE















1

901 DENIM DR.
ERIW, NC 28539

SOLADECK

Model: 1000W-12V-10A
12V 10A
1000W
12V 10A
1000W

WARNING AVERTISSEMENT

Patent No. RUSTIG Enterprises

**WARNING: PHOTOVOLTAIC
POWER SOURCE**







