









CAUTION
WARNING: RISK OF ELECTRIC SHOCK. DO NOT TOUCH THE CONDUCTORS OF THIS PHOTOVOLTAIC SYSTEM WHEN UNGROUNDED AND MAY BE ENERGIZED.

WARNING ELECTRIC SHOCK HAZARD. THE DC CONDUCTORS OF THIS PHOTOVOLTAIC SYSTEM ARE UNGROUNDED AND MAY BE ENERGIZED.

AVERTISSEMENT
RISQUE DE CHOC ELECTRIQUE QUAND LE CHAMP PHOTOVOLTAIQUE EST EXPOSE A LA LUMIERE DU JOUR. TENSION CC EST FOURNIE A CEI EQUIPEMENT. SURFACES CHAUDES. NE PAS TOUCHER. RISK OF RETURN SHOCKS BY TOUCHING THE CONDUCTORS OF THIS PHOTOVOLTAIC SYSTEM. ALWAYS NULL.



1100W/3-80V/10A
12.5-125V/14.1A
1V
520223 0210CT IFE-EC
P1101-4411YHR



Wet
15
Sun
105°C
Res

100V



021DCF1FE-EC



Do Not Remove

21DCF1FE-EC



FC

CAUTION

HOT SURFACES-TO REDUCE THE RISK OF BURNS-DO NOT TOUCH. RISK OF ELECTRIC SHOCK-WHEN THE PHOTOVOLTAIC ARRAY IS EXPOSED TO LIGHT, IT SUPPLIES A DC VOLTAGE TO EQUIPMENT. COVER PV MODULE WITH OPAQUE MATERIAL BEFORE CONNECTING OR DISCONNECTING THIS OPTIMIZER. DURING FAULT, ZERO CURRENT IS SOURCED INTO DC ARRAY BY CONVERTER.

WARNING ELECTRIC SHOCK HAZARD. THE DC CONDUCTORS OF THIS PHOTOVOLTAIC SYSTEM ARE UNGROUNDED AND MAY BE ENERGIZED.

AVERTISSEMENT

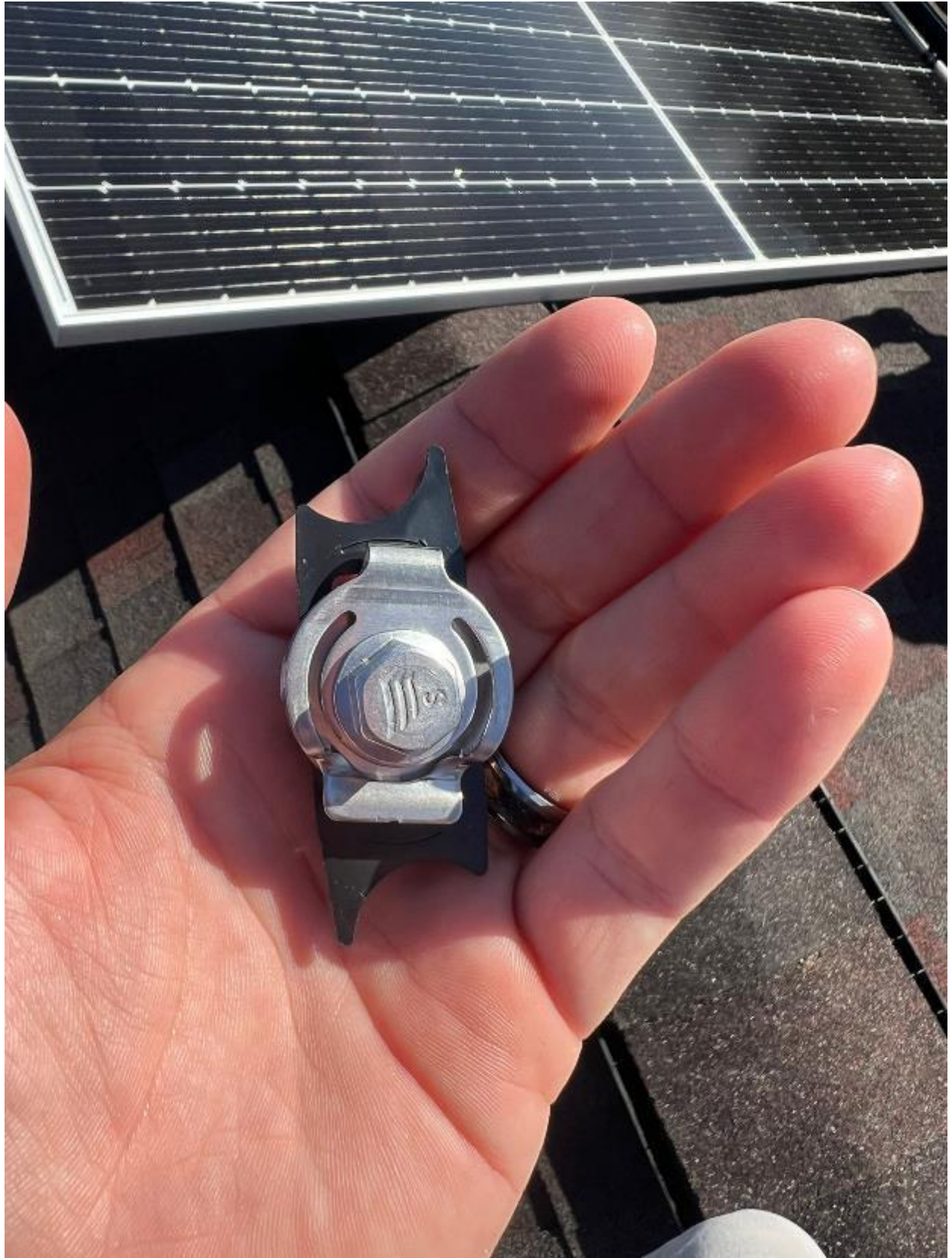
RISQUE DE CHOC ELECTRIQUE: QUAND LE CHAMP PHOTOVOLTAIQUE EST EXPOSE A LA LUMIERE, UNE TENSION CC EST FOURNIE A CET EQUIPEMENT. SURFACES CHAUDES- NE PAS TOUCHER, AFIN DE REDUIRE LES RISQUES DE BRULURES LE COURANT DE RETOUR INJECTE PAR LE CONVERTISSEUR EN CAS DE DEFAILLANCE DANS LE MODULE PV EST TOUJOURS NUL.















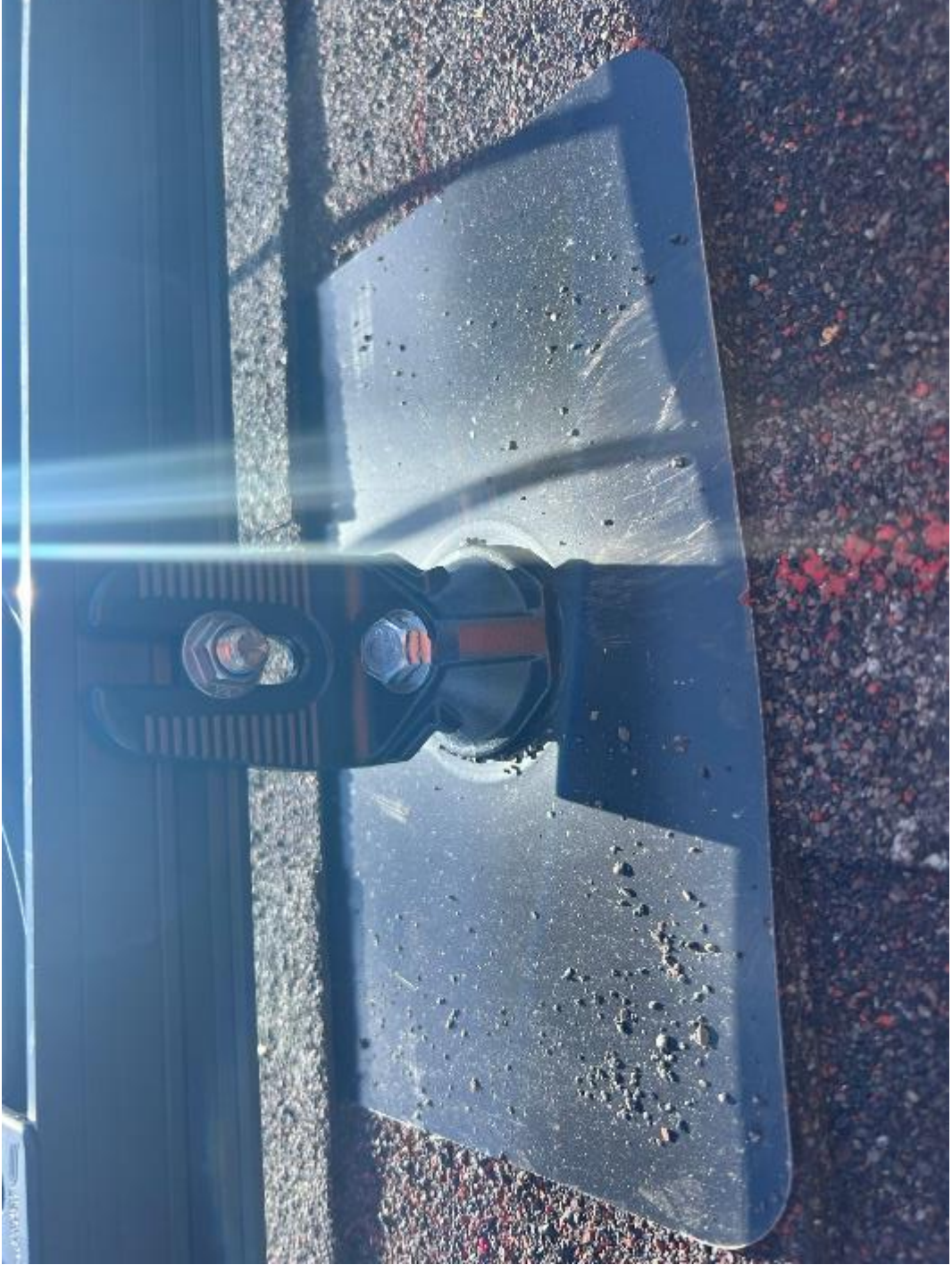










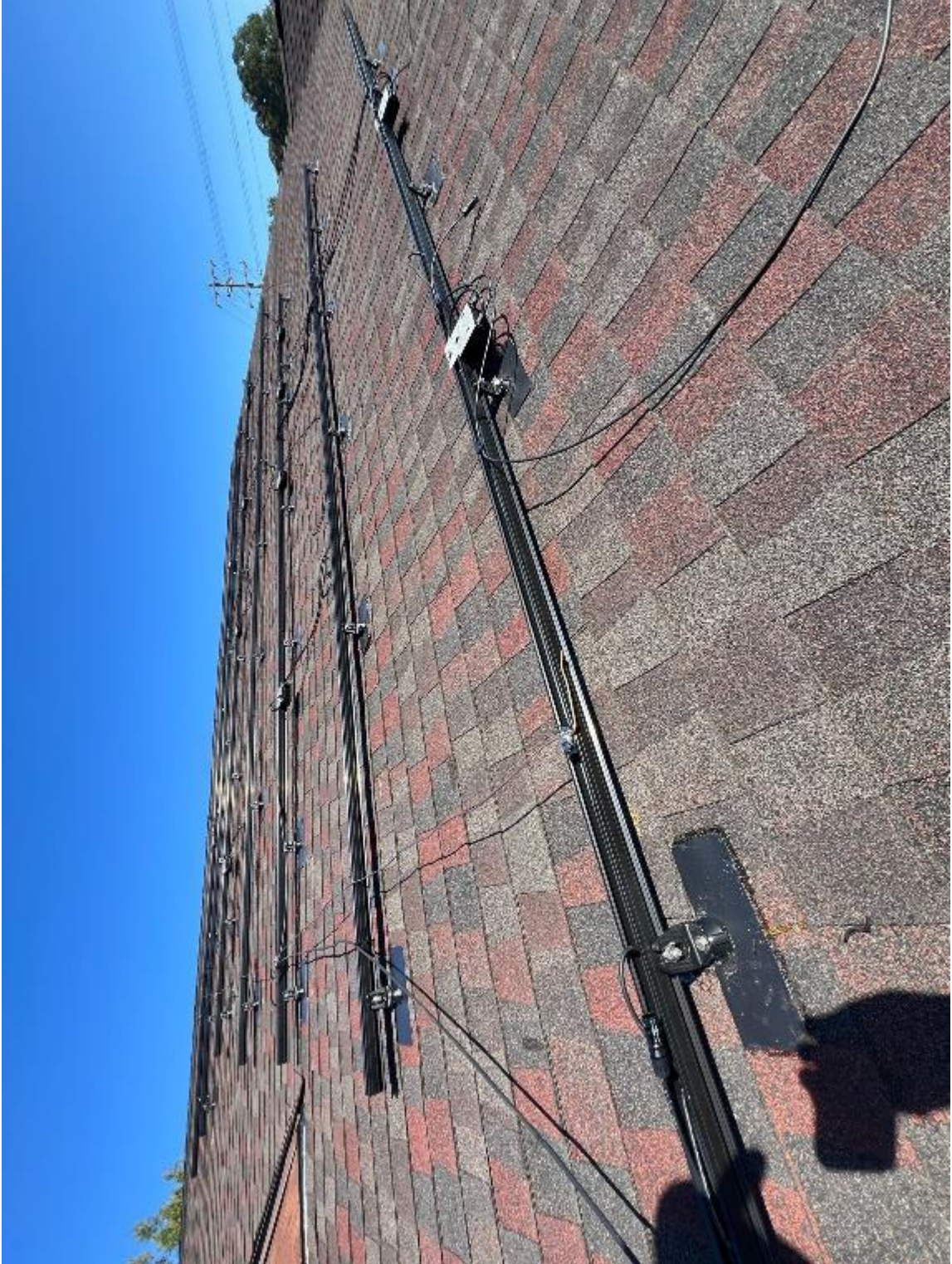


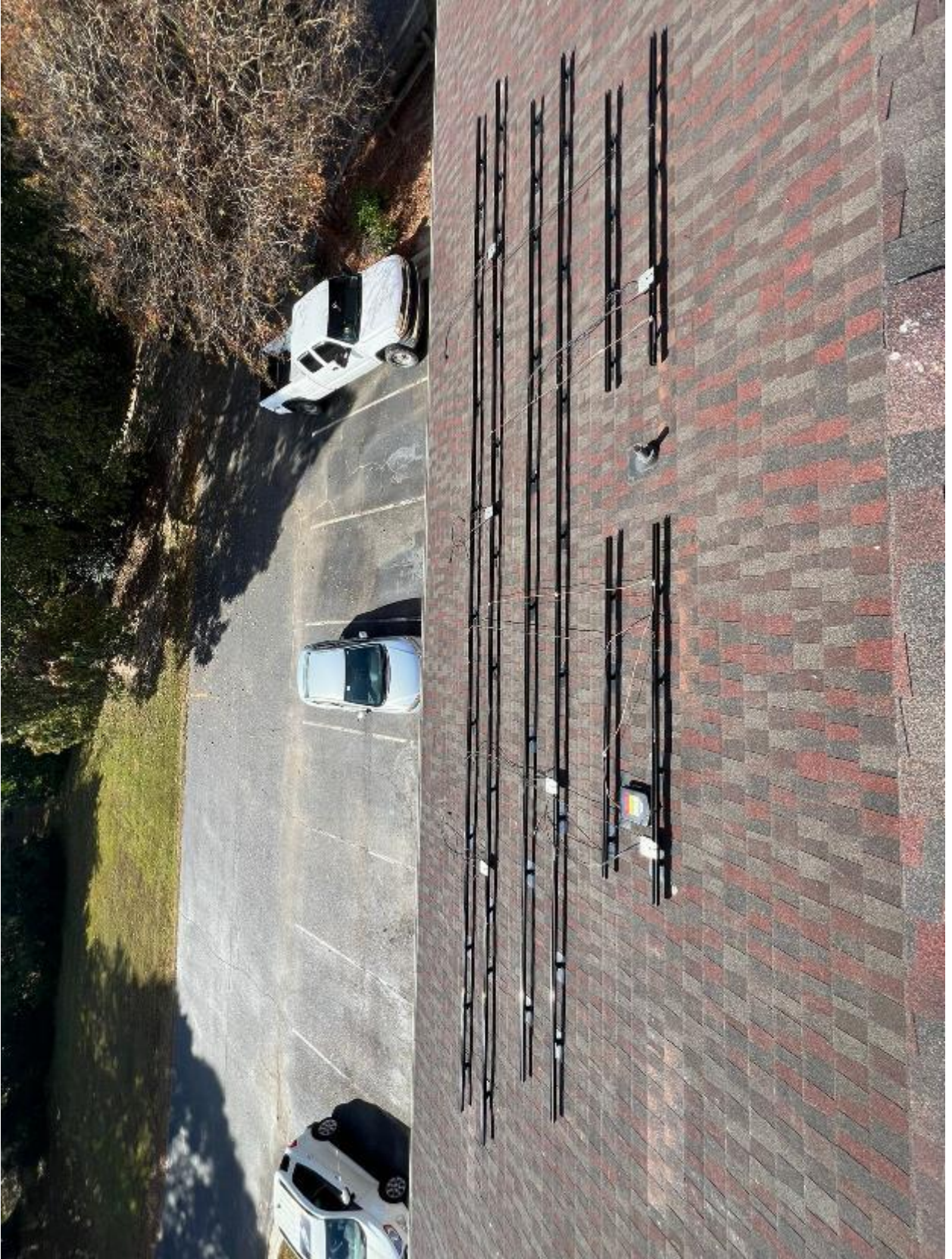


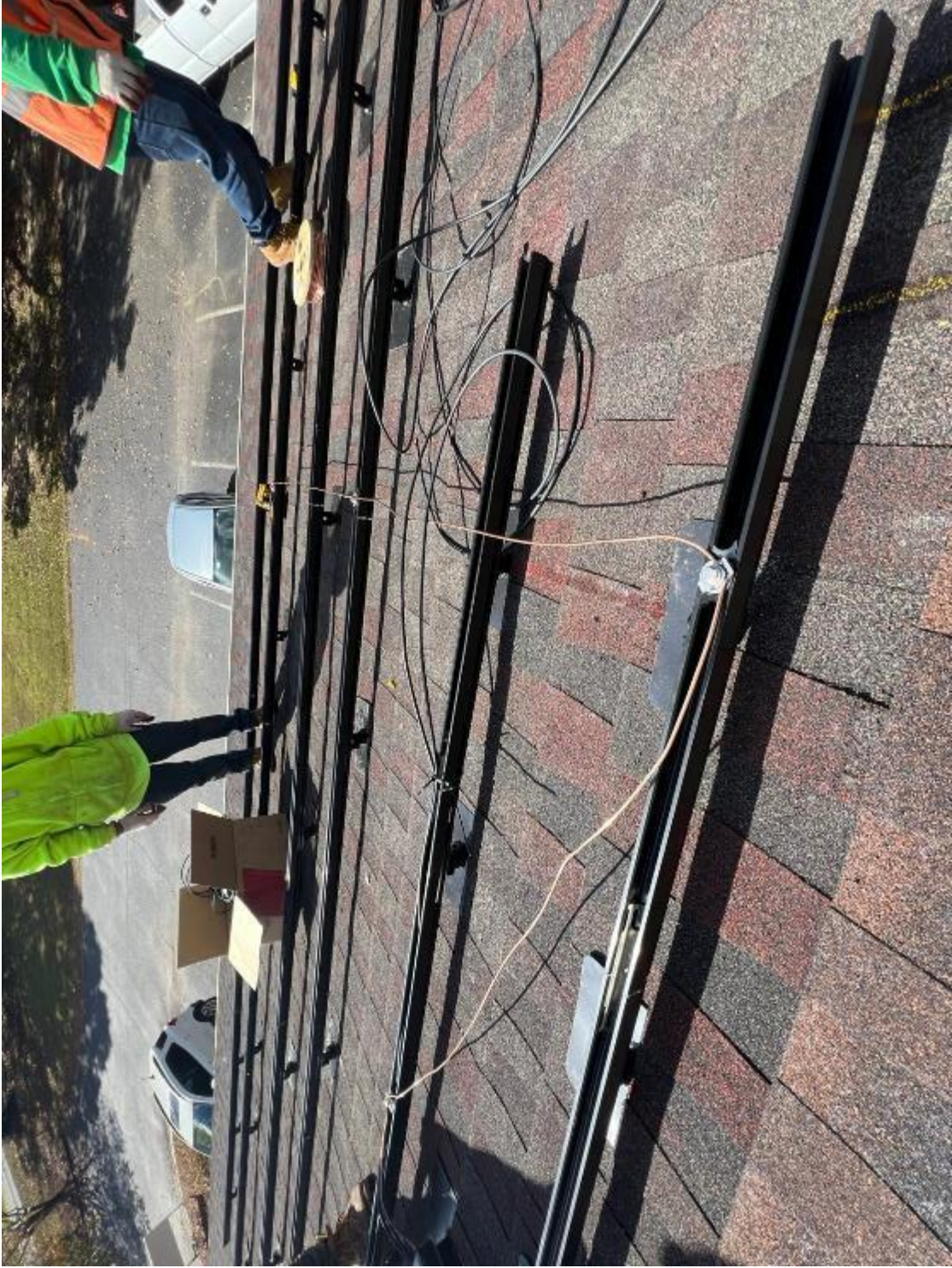


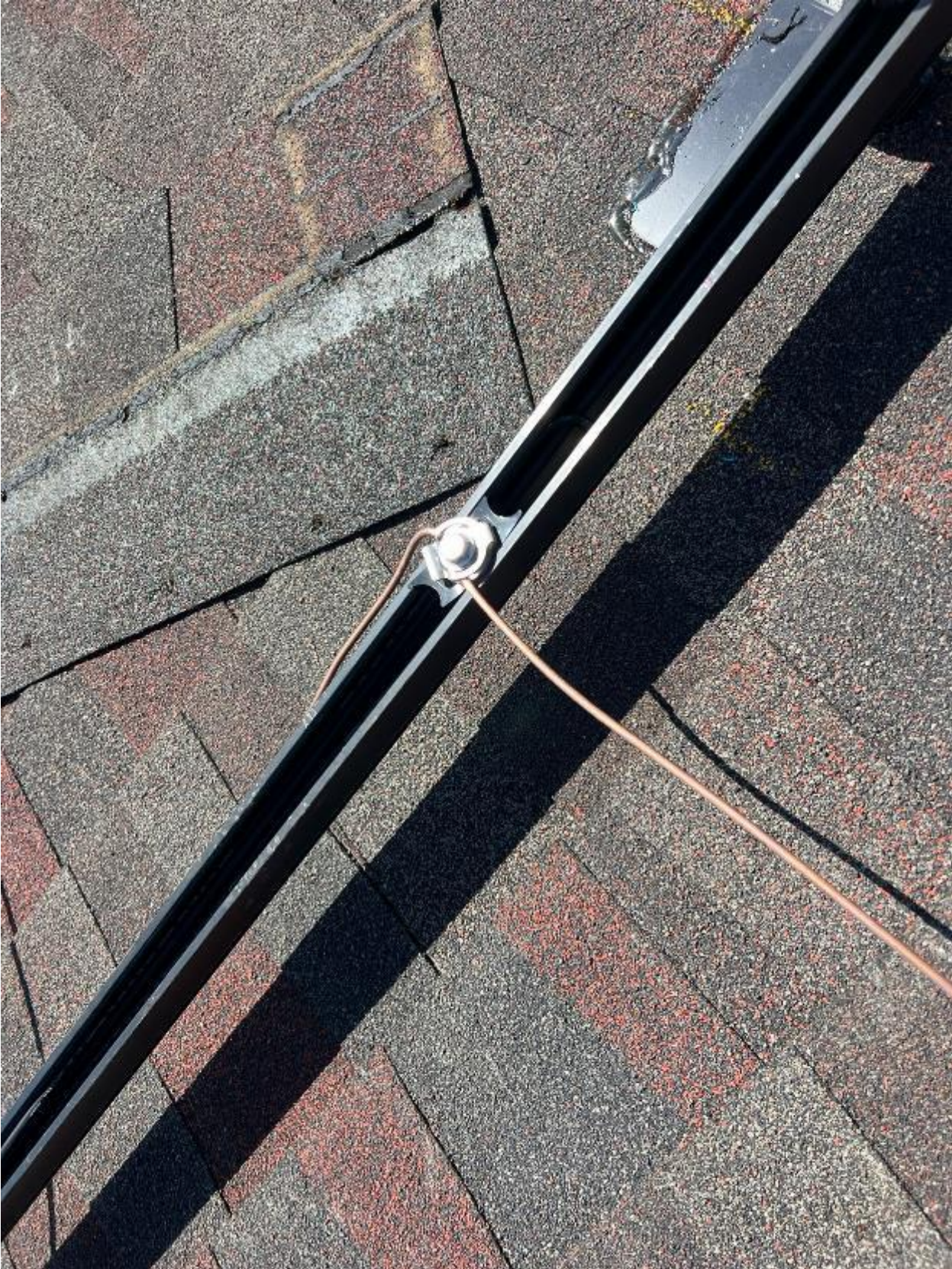










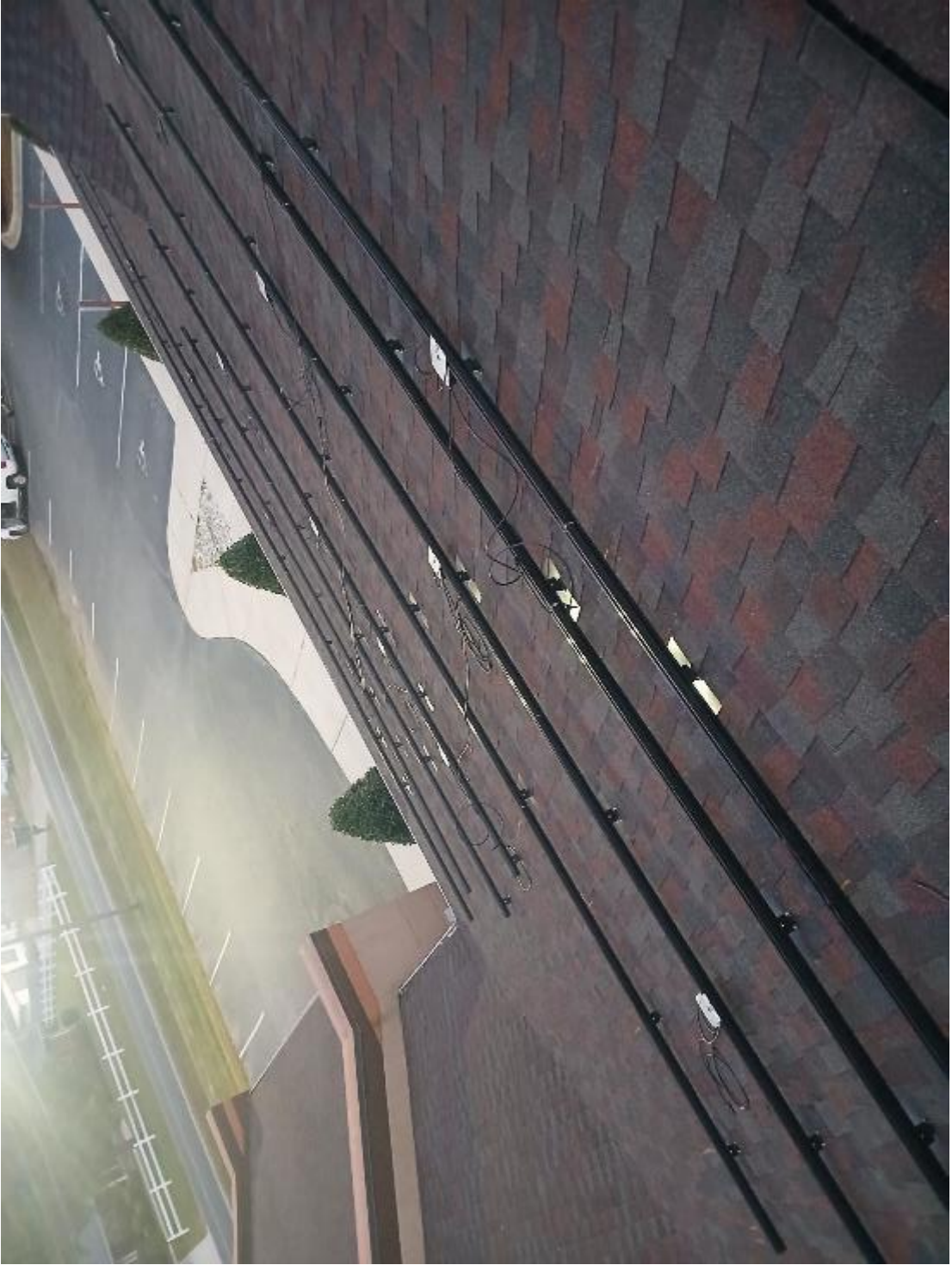










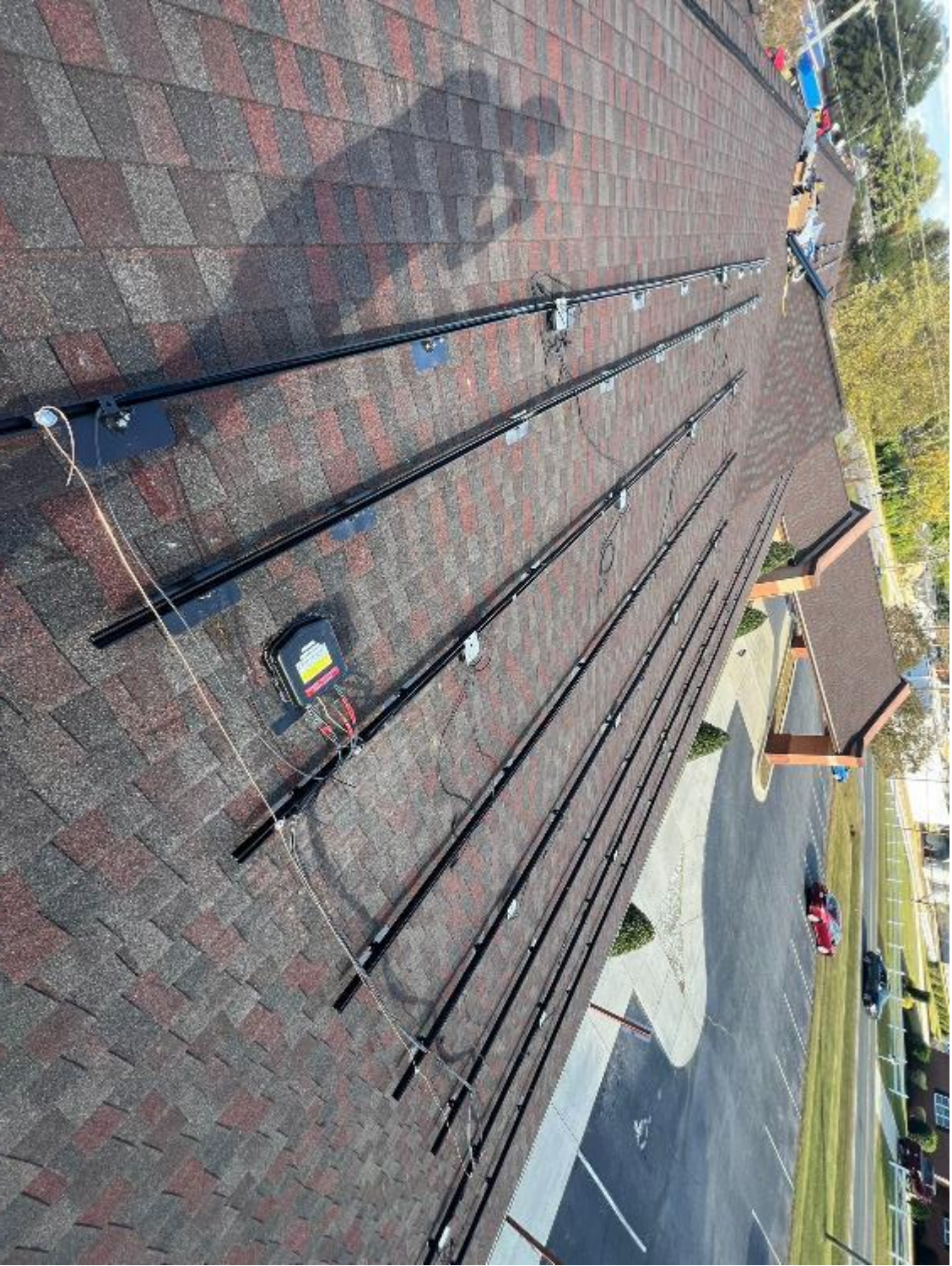




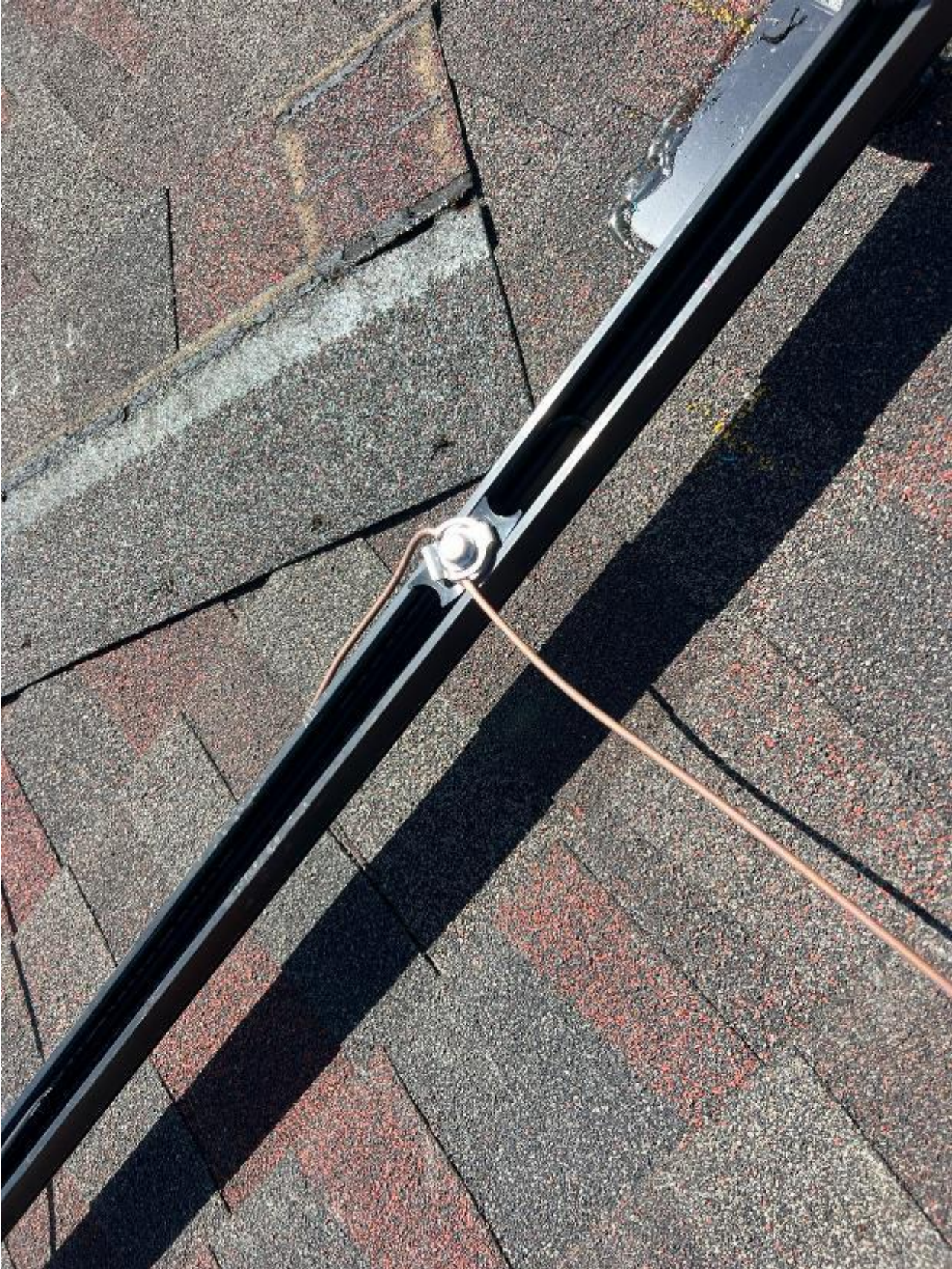
















3

901 DENIM DR.
ERWIN, NC 28339

SOLADECK

Photovoltaic Converter/Inverter Conforms to UL 1741, Certified to CSA C22.2 No. 250, Type 250

31 32 33 34 35 36 37 38 39 40

0793 Series 0764-11A-D

Model Number: 800 WSC 112 400V, 240 WSC 80 400V, 240 WSC 100 400V, 240 WSC 150 400V, 240 WSC 200 400V, 240 WSC 250 400V, 240 WSC 300 400V, 240 WSC 350 400V, 240 WSC 400 400V, 240 WSC 450 400V, 240 WSC 500 400V, 240 WSC 550 400V, 240 WSC 600 400V, 240 WSC 650 400V, 240 WSC 700 400V, 240 WSC 750 400V, 240 WSC 800 400V, 240 WSC 850 400V, 240 WSC 900 400V, 240 WSC 950 400V, 240 WSC 1000 400V, 240 WSC 1050 400V, 240 WSC 1100 400V, 240 WSC 1150 400V, 240 WSC 1200 400V, 240 WSC 1250 400V, 240 WSC 1300 400V, 240 WSC 1350 400V, 240 WSC 1400 400V, 240 WSC 1450 400V, 240 WSC 1500 400V, 240 WSC 1550 400V, 240 WSC 1600 400V, 240 WSC 1650 400V, 240 WSC 1700 400V, 240 WSC 1750 400V, 240 WSC 1800 400V, 240 WSC 1850 400V, 240 WSC 1900 400V, 240 WSC 1950 400V, 240 WSC 2000 400V, 240 WSC 2050 400V, 240 WSC 2100 400V, 240 WSC 2150 400V, 240 WSC 2200 400V, 240 WSC 2250 400V, 240 WSC 2300 400V, 240 WSC 2350 400V, 240 WSC 2400 400V, 240 WSC 2450 400V, 240 WSC 2500 400V, 240 WSC 2550 400V, 240 WSC 2600 400V, 240 WSC 2650 400V, 240 WSC 2700 400V, 240 WSC 2750 400V, 240 WSC 2800 400V, 240 WSC 2850 400V, 240 WSC 2900 400V, 240 WSC 2950 400V, 240 WSC 3000 400V, 240 WSC 3050 400V, 240 WSC 3100 400V, 240 WSC 3150 400V, 240 WSC 3200 400V, 240 WSC 3250 400V, 240 WSC 3300 400V, 240 WSC 3350 400V, 240 WSC 3400 400V, 240 WSC 3450 400V, 240 WSC 3500 400V, 240 WSC 3550 400V, 240 WSC 3600 400V, 240 WSC 3650 400V, 240 WSC 3700 400V, 240 WSC 3750 400V, 240 WSC 3800 400V, 240 WSC 3850 400V, 240 WSC 3900 400V, 240 WSC 3950 400V, 240 WSC 4000 400V, 240 WSC 4050 400V, 240 WSC 4100 400V, 240 WSC 4150 400V, 240 WSC 4200 400V, 240 WSC 4250 400V, 240 WSC 4300 400V, 240 WSC 4350 400V, 240 WSC 4400 400V, 240 WSC 4450 400V, 240 WSC 4500 400V, 240 WSC 4550 400V, 240 WSC 4600 400V, 240 WSC 4650 400V, 240 WSC 4700 400V, 240 WSC 4750 400V, 240 WSC 4800 400V, 240 WSC 4850 400V, 240 WSC 4900 400V, 240 WSC 4950 400V, 240 WSC 5000 400V, 240 WSC 5050 400V, 240 WSC 5100 400V, 240 WSC 5150 400V, 240 WSC 5200 400V, 240 WSC 5250 400V, 240 WSC 5300 400V, 240 WSC 5350 400V, 240 WSC 5400 400V, 240 WSC 5450 400V, 240 WSC 5500 400V, 240 WSC 5550 400V, 240 WSC 5600 400V, 240 WSC 5650 400V, 240 WSC 5700 400V, 240 WSC 5750 400V, 240 WSC 5800 400V, 240 WSC 5850 400V, 240 WSC 5900 400V, 240 WSC 5950 400V, 240 WSC 6000 400V, 240 WSC 6050 400V, 240 WSC 6100 400V, 240 WSC 6150 400V, 240 WSC 6200 400V, 240 WSC 6250 400V, 240 WSC 6300 400V, 240 WSC 6350 400V, 240 WSC 6400 400V, 240 WSC 6450 400V, 240 WSC 6500 400V, 240 WSC 6550 400V, 240 WSC 6600 400V, 240 WSC 6650 400V, 240 WSC 6700 400V, 240 WSC 6750 400V, 240 WSC 6800 400V, 240 WSC 6850 400V, 240 WSC 6900 400V, 240 WSC 6950 400V, 240 WSC 7000 400V, 240 WSC 7050 400V, 240 WSC 7100 400V, 240 WSC 7150 400V, 240 WSC 7200 400V, 240 WSC 7250 400V, 240 WSC 7300 400V, 240 WSC 7350 400V, 240 WSC 7400 400V, 240 WSC 7450 400V, 240 WSC 7500 400V, 240 WSC 7550 400V, 240 WSC 7600 400V, 240 WSC 7650 400V, 240 WSC 7700 400V, 240 WSC 7750 400V, 240 WSC 7800 400V, 240 WSC 7850 400V, 240 WSC 7900 400V, 240 WSC 7950 400V, 240 WSC 8000 400V, 240 WSC 8050 400V, 240 WSC 8100 400V, 240 WSC 8150 400V, 240 WSC 8200 400V, 240 WSC 8250 400V, 240 WSC 8300 400V, 240 WSC 8350 400V, 240 WSC 8400 400V, 240 WSC 8450 400V, 240 WSC 8500 400V, 240 WSC 8550 400V, 240 WSC 8600 400V, 240 WSC 8650 400V, 240 WSC 8700 400V, 240 WSC 8750 400V, 240 WSC 8800 400V, 240 WSC 8850 400V, 240 WSC 8900 400V, 240 WSC 8950 400V, 240 WSC 9000 400V, 240 WSC 9050 400V, 240 WSC 9100 400V, 240 WSC 9150 400V, 240 WSC 9200 400V, 240 WSC 9250 400V, 240 WSC 9300 400V, 240 WSC 9350 400V, 240 WSC 9400 400V, 240 WSC 9450 400V, 240 WSC 9500 400V, 240 WSC 9550 400V, 240 WSC 9600 400V, 240 WSC 9650 400V, 240 WSC 9700 400V, 240 WSC 9750 400V, 240 WSC 9800 400V, 240 WSC 9850 400V, 240 WSC 9900 400V, 240 WSC 9950 400V, 240 WSC 10000 400V

WARNING

AVERTISSEMENT

WARNING: PHOTOVOLTAIC POWER SOURCE









