





**PHOTOVOLTAIC
AC DISCONNECT**

**RAPID SHUTDOWN
SWITCH FOR
SOLAR PV SYSTEM**

ON
↑

**EMERGENCY
DISCONNECT**
DESCONEXIÓN DE EMERGENCIA

AC DISCONNECT
PHOTOVOLTAIC SYSTEM
POWER SOURCE

RATED AC OUTPUT CURRENT **96.5** AMPS
NOMINAL OPERATING AC VOLTAGE **120 / 208** VOLTS

SQUARE D GENERAL DUTY SAFETY SWITCH
INTERRUPTOR DE SEGURIDAD DE SERVICIO GENERAL
200 A
240 V ac / V-

⚠ DANGER / PELIGRO
HAZARD OF ELECTRIC SHOCK, EXPLOSION, OR ARC FLASH
PELIGRO DE DESCARGA ELÉCTRICA, EXPLOSIÓN O DESTELLO POR ARQUEO

- Read and understand general instructions, equipment (GPI) and follow safe electrical work practices. See NFPA 70E.
- This equipment must only be installed and serviced by qualified electrical personnel.
- Never operate emergency switch with door open. Keep door latched.
- Turn off switch before removing or installing fuses or making load wire connections.
- Always use a properly rated voltage sensing device at all time and read fuse strip to confirm switch is off.
- Turn off power supplying switch before doing any other work on or inside switch.
- Do not use removable fuses or fused switches.
- Failure to follow these instructions will result in death or serious injury.
- To keep our switch, please contact local branch office or distributor and advise branch.

- Observe warning and protection personal (PPE) symbols and signs the electrical safety standards established by the Commission on Occupational Safety (NFPA 70E).
- Only trained and authorized personnel should be allowed to install and service this equipment.
- Nunca haga funcionar el interruptor con la puerta abierta o cuando está deslatchado. Mantenga la puerta cerrada.
- Desconecte el interruptor antes de cambiar o instalar fusibles o de hacer conexiones en el cable de carga.
- Siempre utilice un dispositivo de detección de voltaje apropiado en los cables para confirmar de los cables de carga y fuses para confirmar la desconexión del interruptor.
- Desconecte el interruptor antes de realizar cualquier otro trabajo en el interruptor.
- No utilice fusibles de carga removibles o fusibles de fusión.
- El cumplimiento de estas instrucciones puede salvar la muerte o lesiones serias.
- Para mantener el interruptor, le pedimos que contacte a un distribuidor o un agente de ventas de su oficina y que informe de la marca.

SERVICE DISCONNECT LOCATED

TO LEFT

OFF

PHOTOVOLTAIC
AC DISCONNECT

RAPID SHUTDOWN
SWITCH FOR
SOLAR PV SYSTEM

ON
I

EMERGENCY
DISCONNECT
DESCONEXIÓN DE EMERGENCIA

AC DISCONNECT
PHOTOVOLTAIC SYSTEM
POWER SOURCE
RATED AC
OUTPUT CURRENT AMPS
NOMINAL OPERATING
AC VOLTAGE VOLTS

**GENERAL DUTY
SAFETY SWITCH
INTERRUPTOR DE
SERVICIO GENERAL**
250 VOLT 15 A

⚠ DANGER / PELIGRO

Read and understand the instructions and warnings before using this product. Failure to do so may result in injury or death. This product is not to be used for applications not intended by the manufacturer. For more information, visit us online at www.eaton.com.

SERVICE DISCONNECT LOCATED

TO LEFT

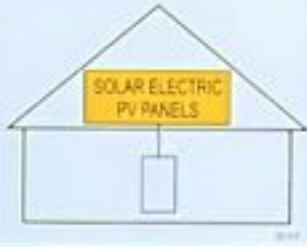
OFF

**WARNING: PHOTOVOLTAIC
POWER SOURCE**

⚠ WARNING
ELECTRIC SHOCK HAZARD
TERMINALS ON THE LINE AND
LOAD SIDES MAY BE ENERGIZED
IN THE OPEN POSITION

**SOLAR PV SYSTEM EQUIPPED
WITH RAPID SHUTDOWN**

TURN RAPID SHUTDOWN
SWITCH TO THE
"OFF" POSITION TO
SHUT DOWN PV SYSTEM
AND REDUCE
SHOCK HAZARD
IN THE ARRAY





WARNING

DUAL POWER SUPPLY
SOURCES: UTILITY GRID AND
PV SOLAR ELECTRIC SYSTEM

WARNING

ELECTRIC SHOCK HAZARD
TERMINALS ON THE LINE AND
LOAD SIDES MAY BE ENERGIZED
IN THE OPEN POSITION

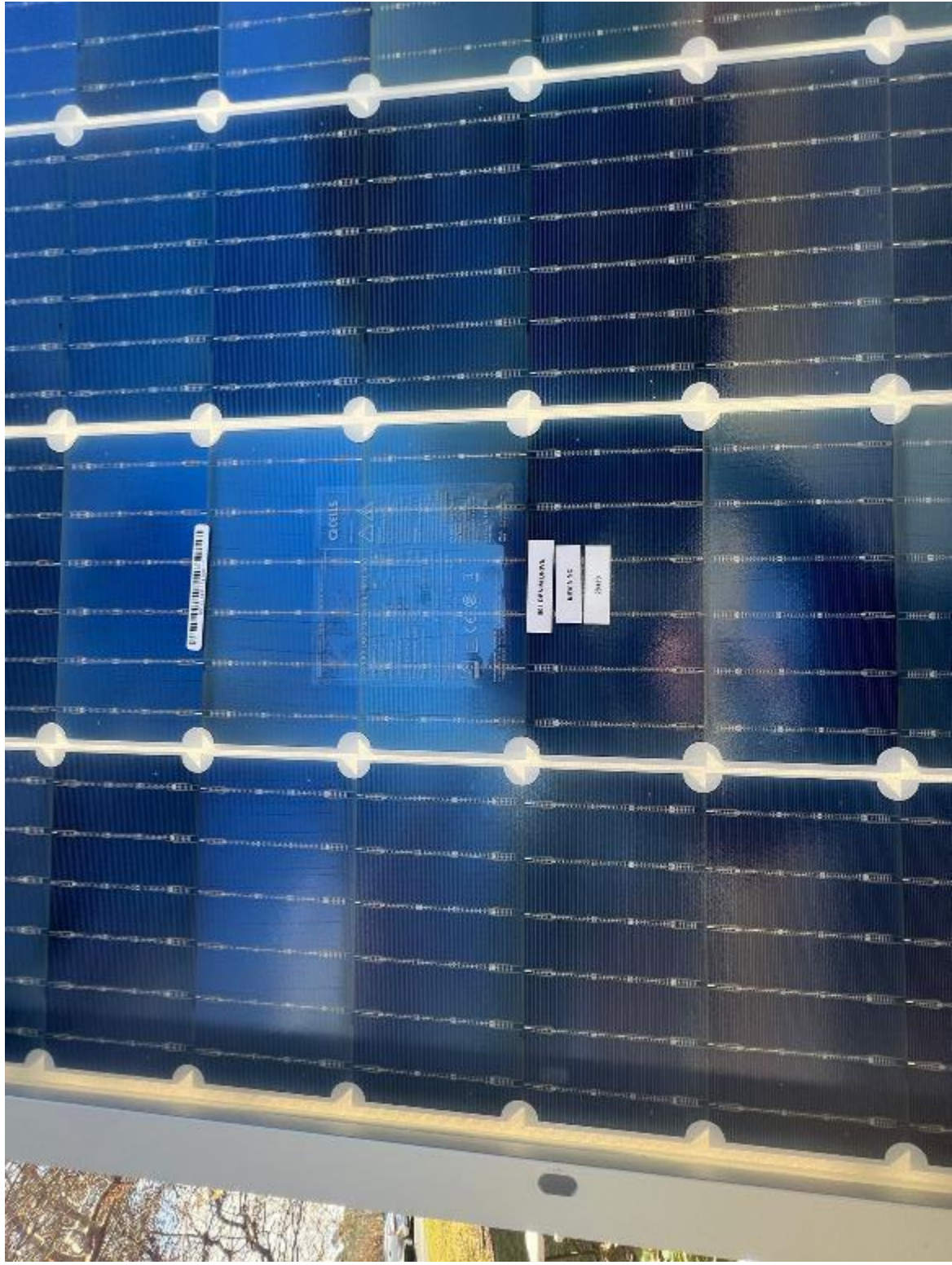
SOLAR AC DISCONNECT LOCATED AT:

ON

GENERAL DUTY
SAFETY SWITCH
DANGER
OF
ELECTRIC
SHOCK
SEE CODE





































021DCF1FE-EC



Do Not Remove

21DCF1FE-EC



FC

CAUTION

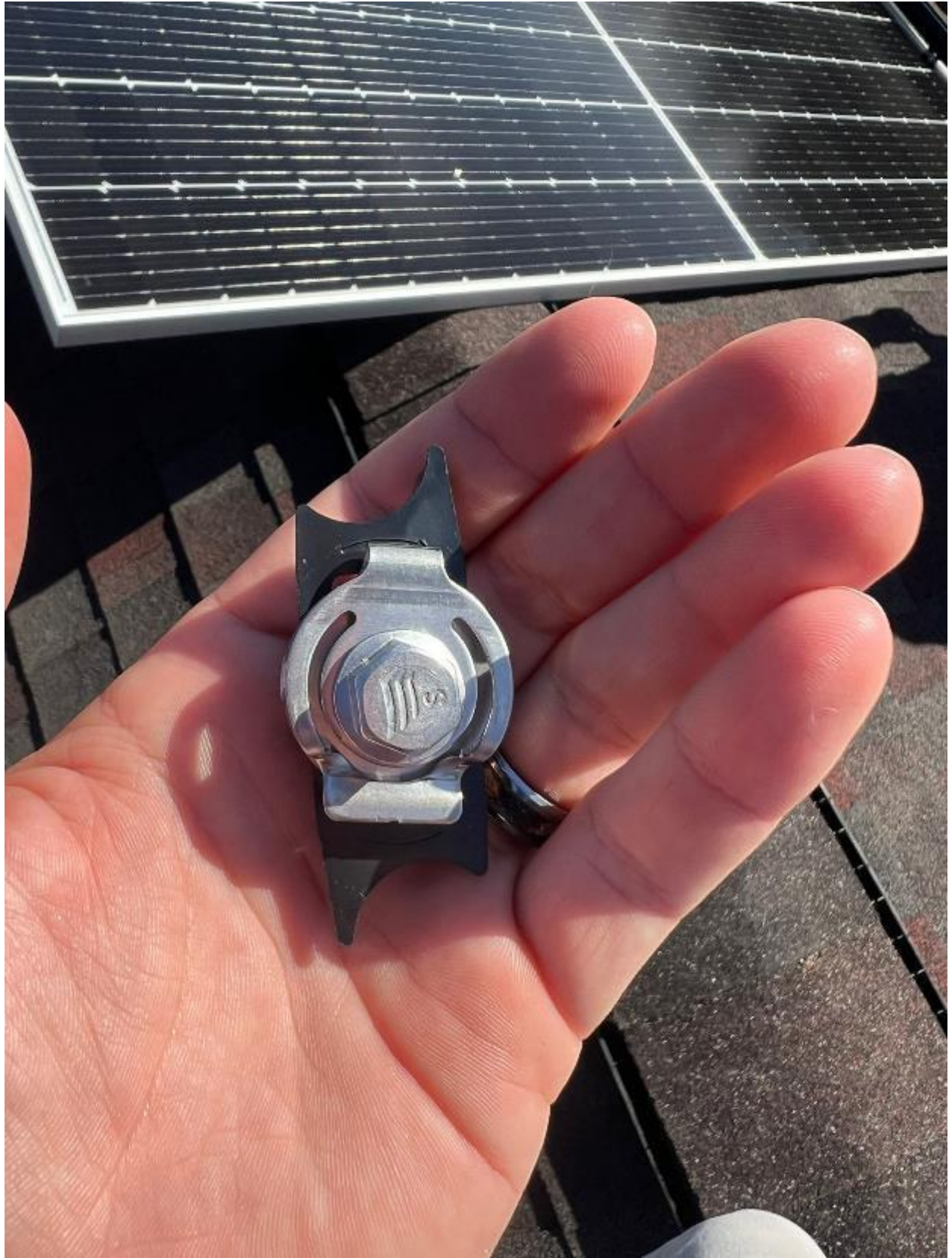
HOT SURFACES-TO REDUCE THE RISK OF BURNS-DO NOT TOUCH. RISK OF ELECTRIC SHOCK-WHEN THE PHOTOVOLTAIC ARRAY IS EXPOSED TO LIGHT, IT SUPPLIES A DC VOLTAGE TO EQUIPMENT. COVER PV MODULE WITH OPAQUE MATERIAL BEFORE CONNECTING OR DISCONNECTING THIS OPTIMIZER. DURING FAULT, ZERO CURRENT IS SOURCED INTO DC ARRAY BY CONVERTER.

WARNING ELECTRIC SHOCK HAZARD. THE DC CONDUCTORS OF THIS PHOTOVOLTAIC SYSTEM ARE UNGROUNDED AND MAY BE ENERGIZED.

AVERTISSEMENT

RISQUE DE CHOC ELECTRIQUE: QUAND LE CHAMP PHOTOVOLTAIQUE EST EXPOSE A LA LUMIERE, UNE TENSION CC EST FOURNIE A CET EQUIPEMENT. SURFACES CHAUDES- NE PAS TOUCHER, AFIN DE REDUIRE LES RISQUES DE BRULURES LE COURANT DE RETOUR INJECTE PAR LE CONVERTISSEUR EN CAS DE DEFAILLANCE DANS LE MODULE PV EST TOUJOURS NUL.









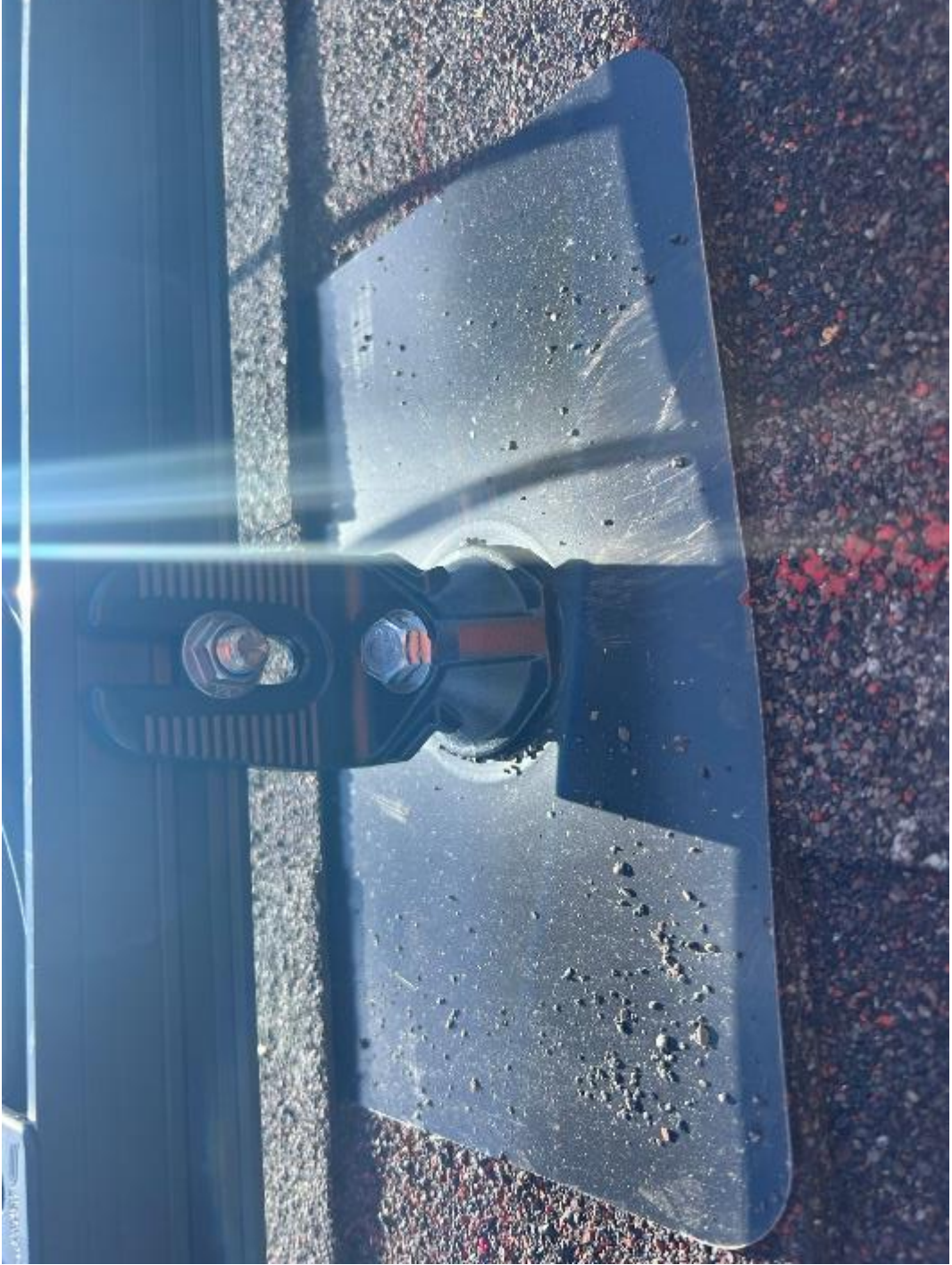




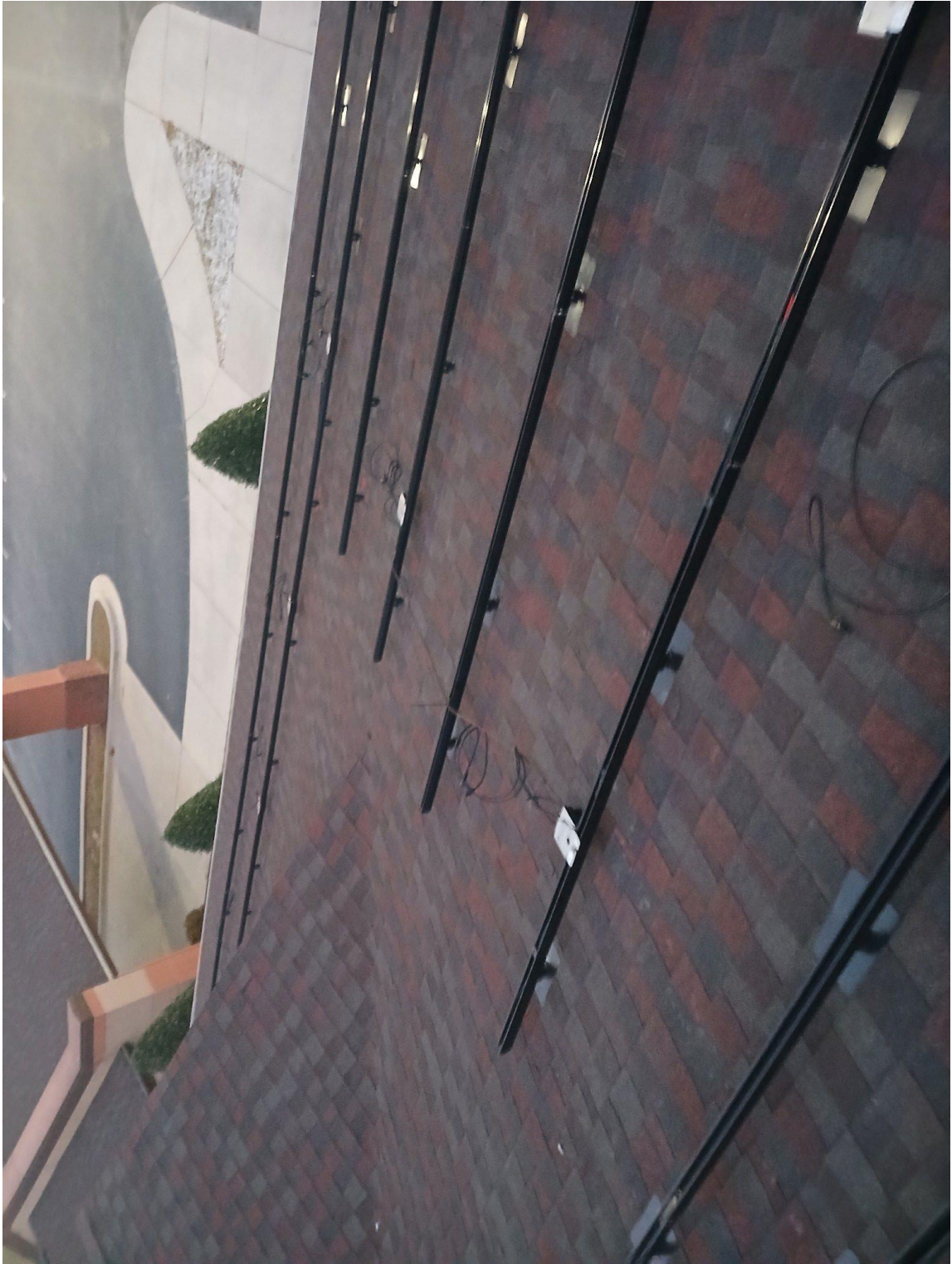




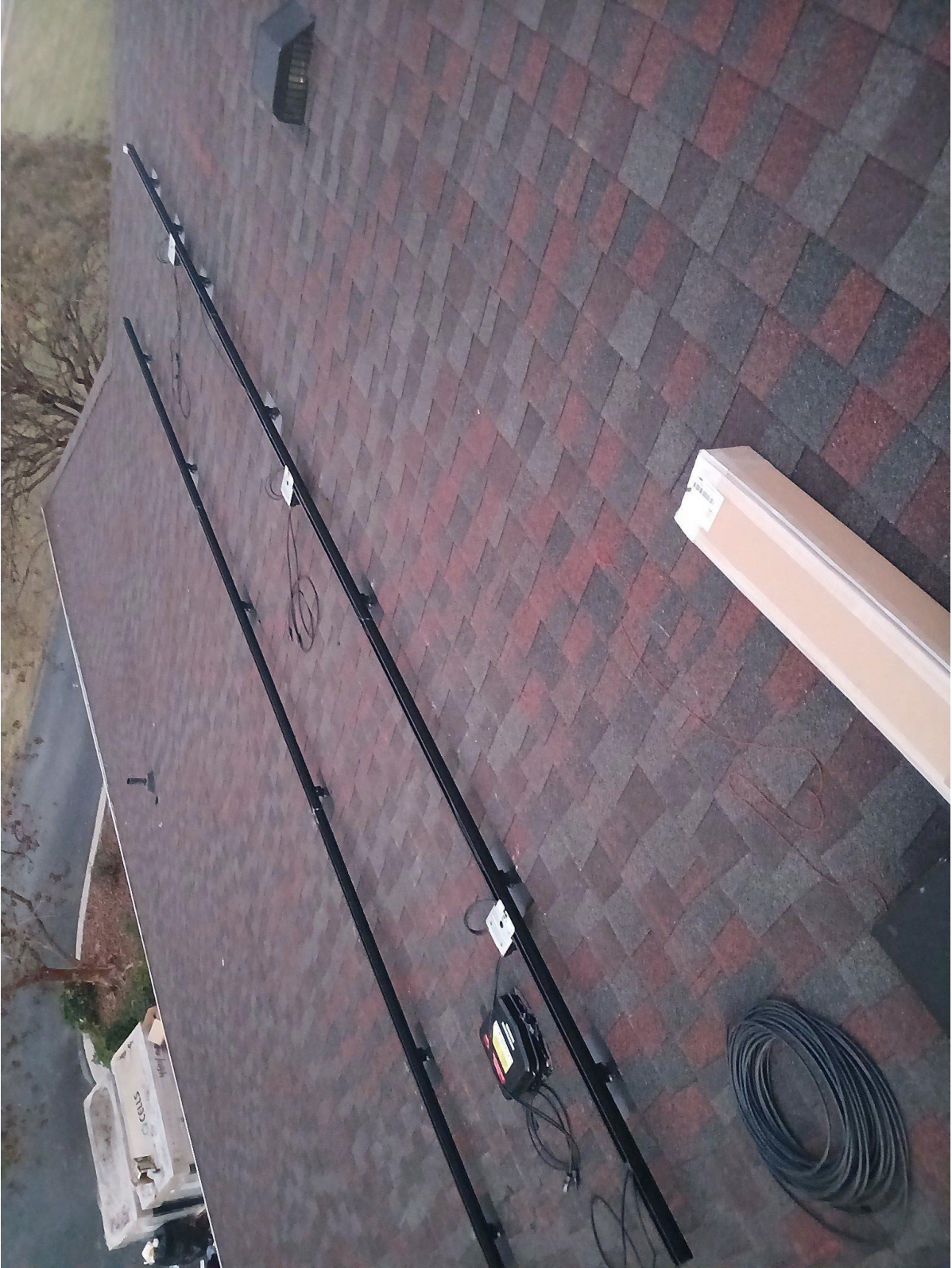








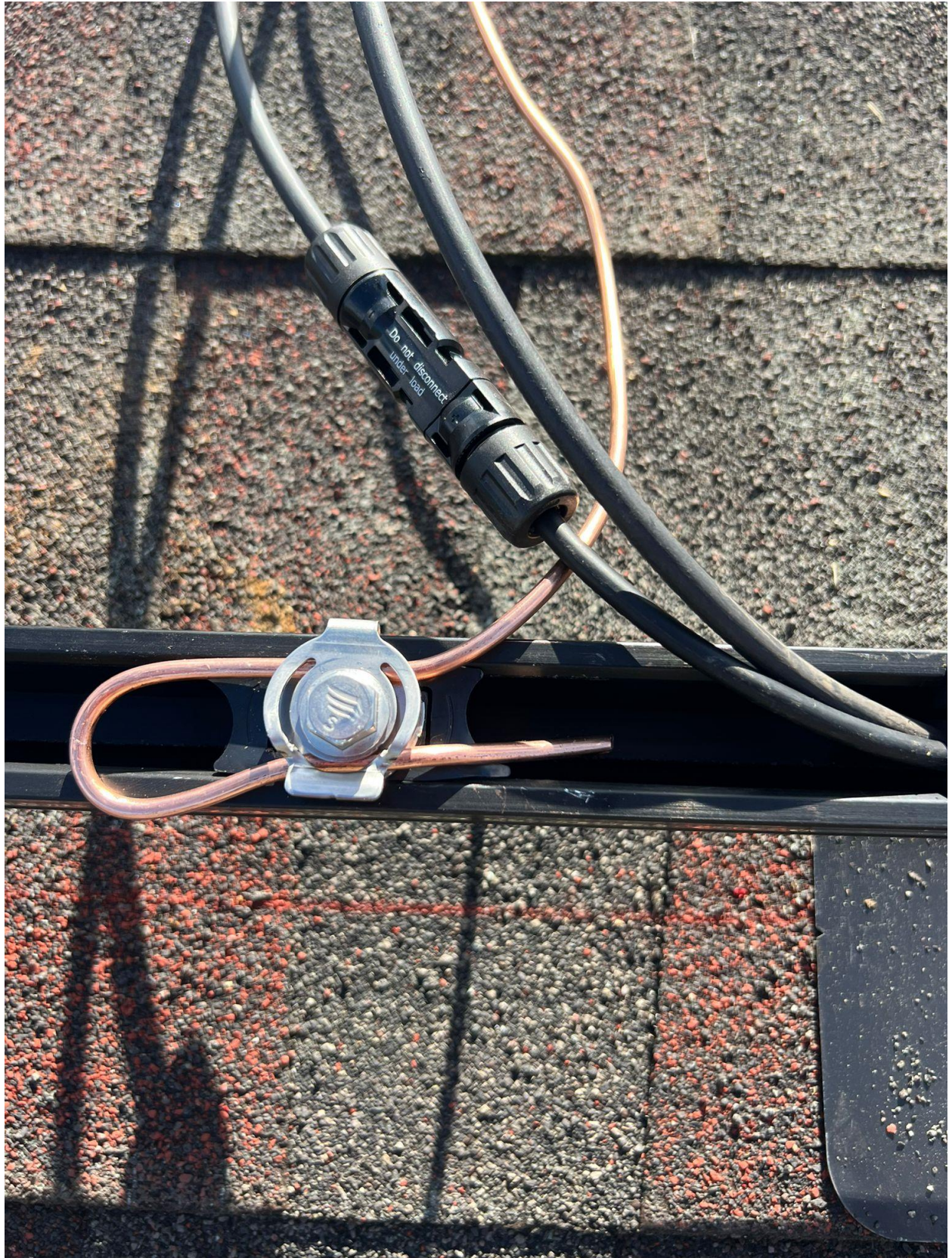


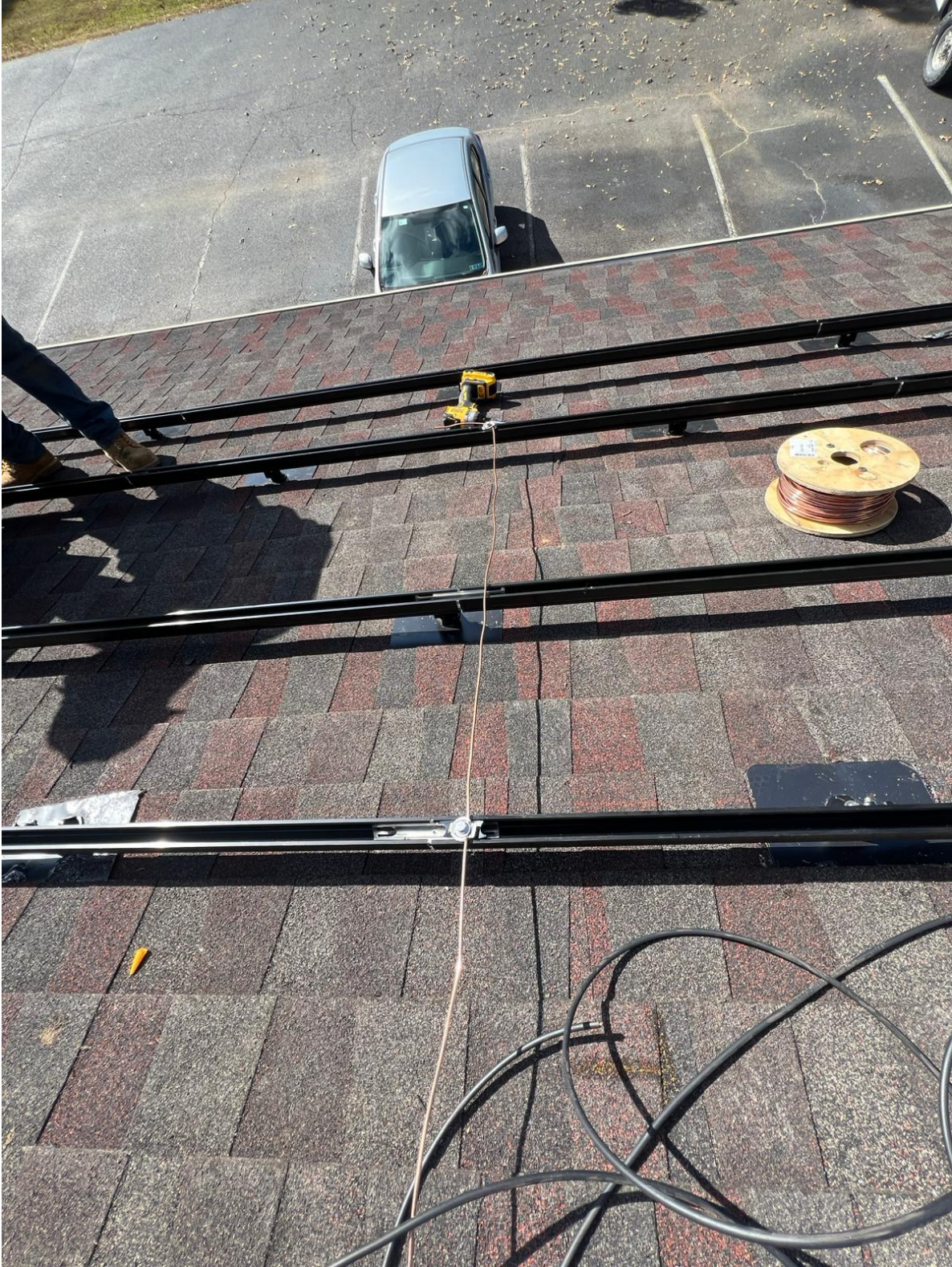




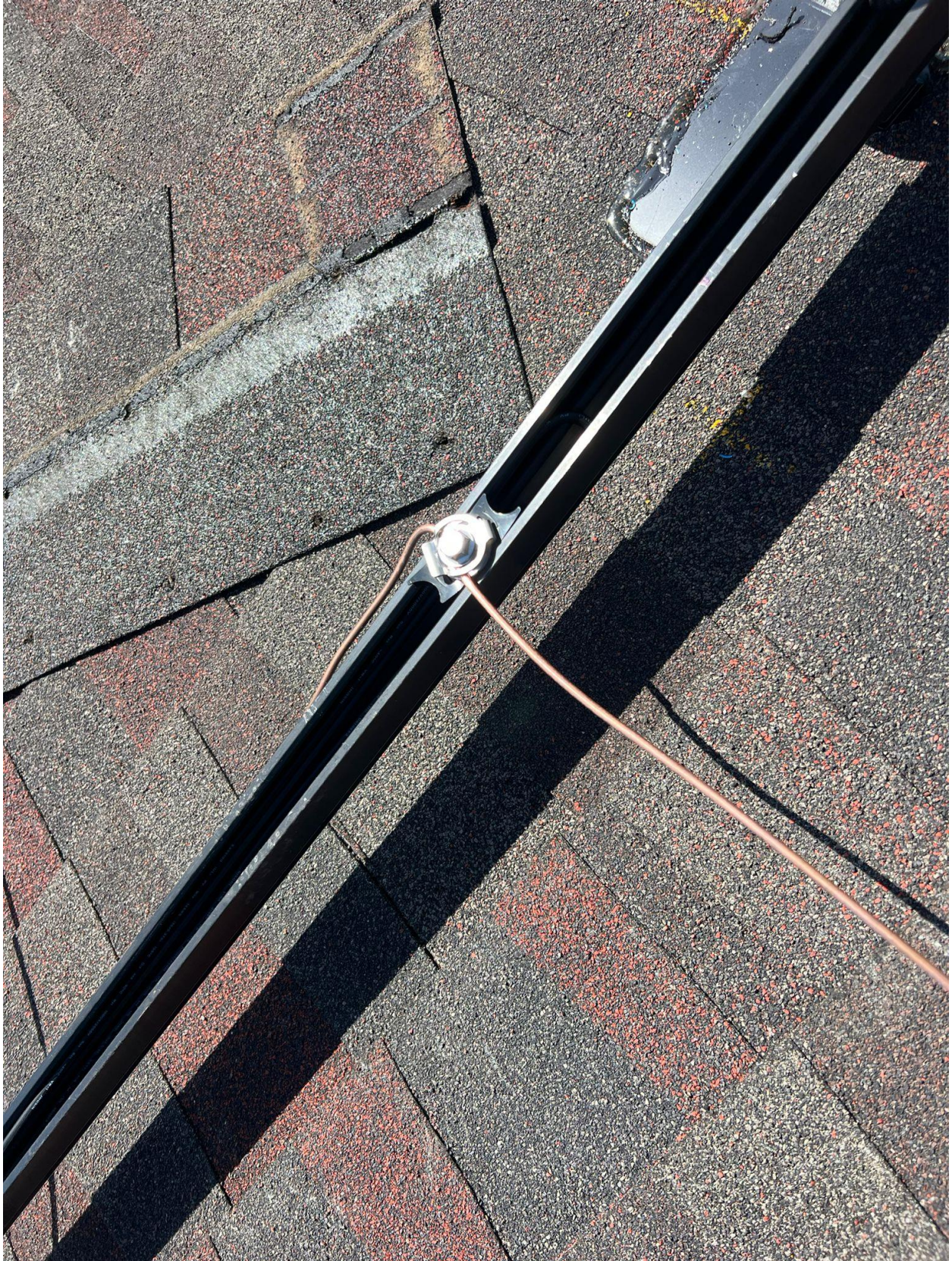




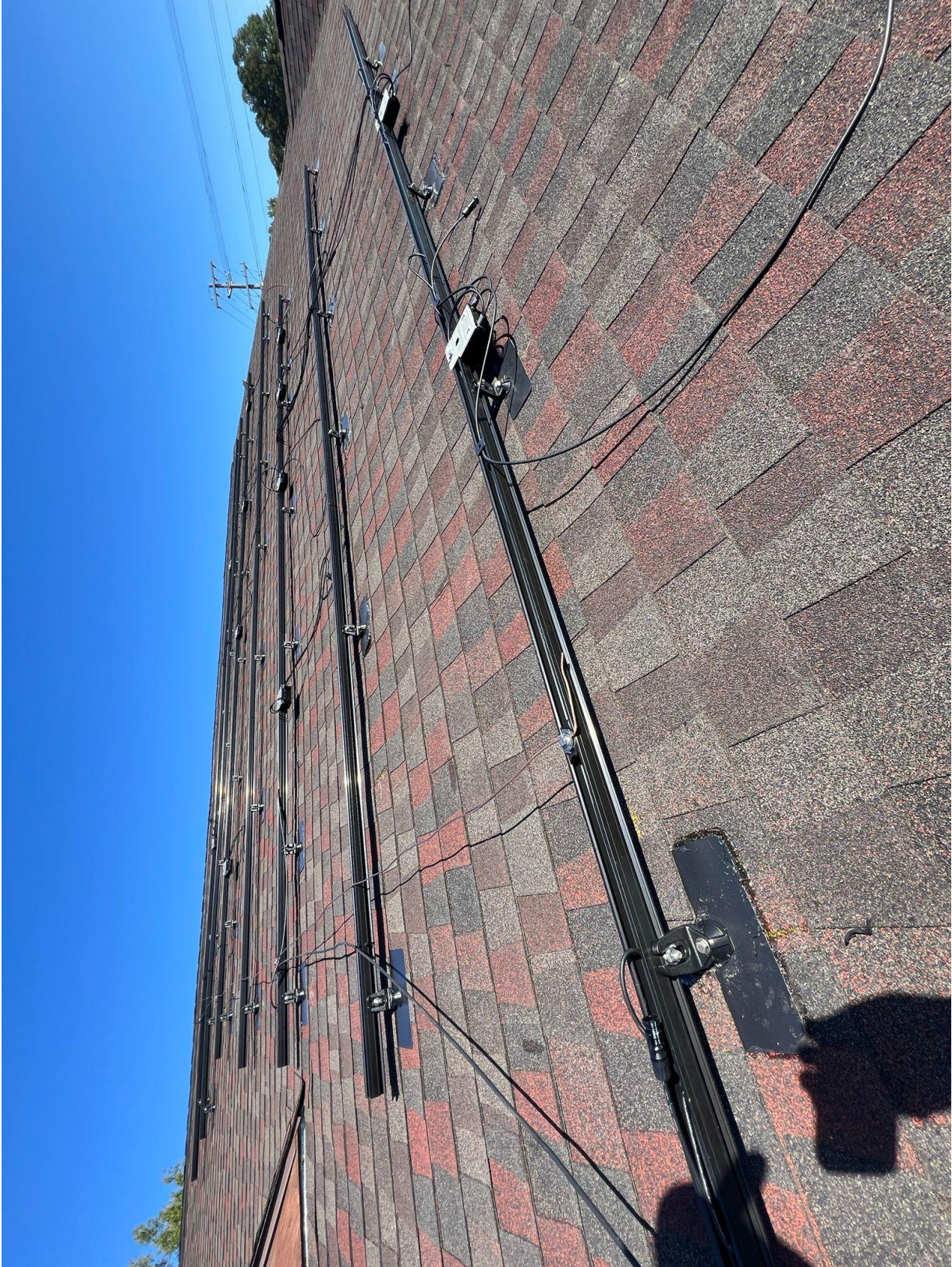






















CAUTION

DO NOT SUBJECT TO REDUCED THE RISK OF ELECTRIC SHOCK WHEN THE PHOTOVOLTAIC ARRAY IS EXPOSED TO DIRECT SUNLIGHT. ALWAYS WEAR THE EQUIPMENT COVER FOR MODULE WITH DURING FAULT ZERO CURRENT SYSTEM CONNECTION DISCONNECTING THE GENERATOR.

WARNING

LECTURE DÉPÊCHEZ-VOUS LA MISE EN CONTACT DES CONDUCTEURS DE CE PHOTOVOLTAÏQUE SYSTEME SONT DANGEREUX ET PEUVENT ÊTRE ÉLECTROCUTÉS.

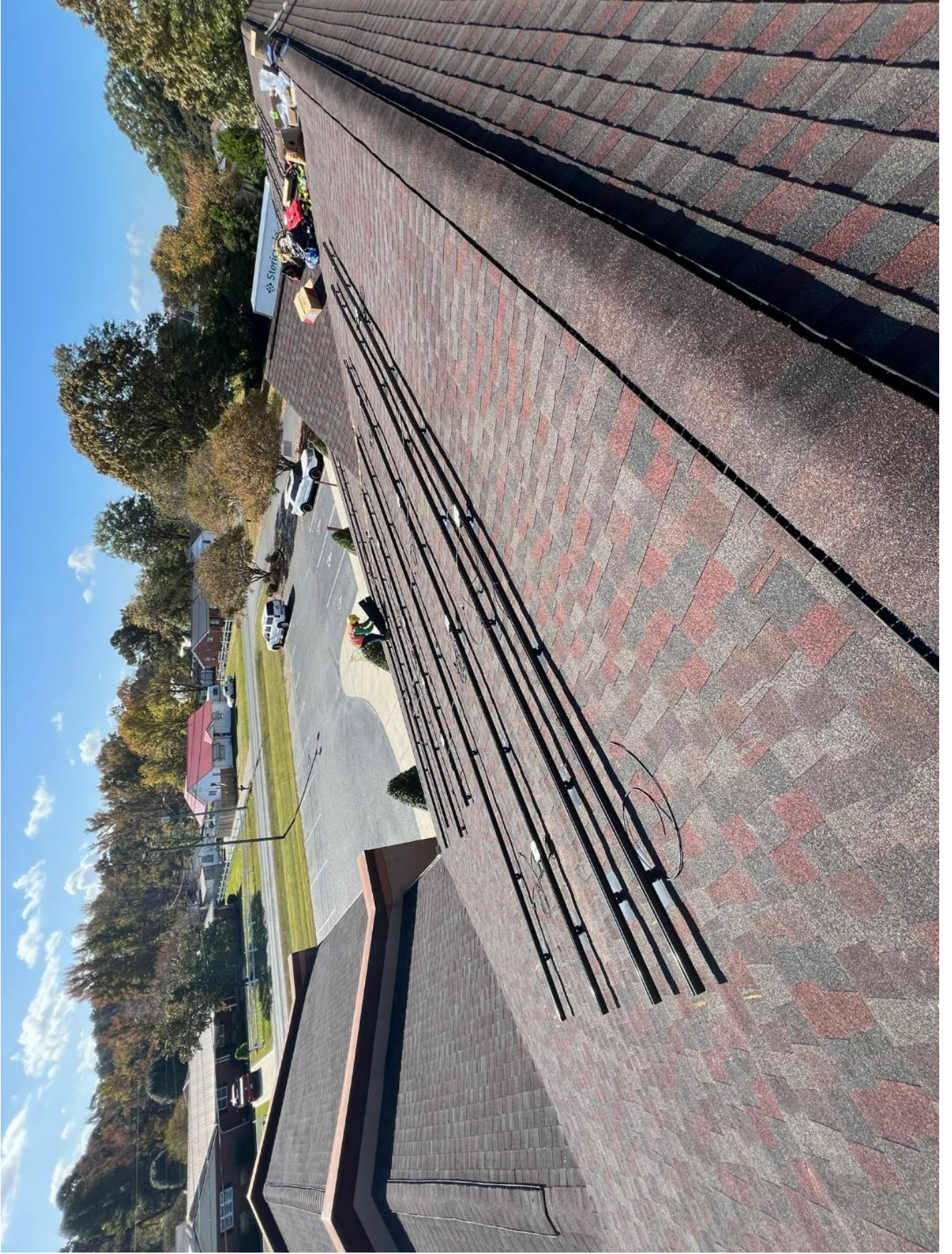
AVERTISSEMENT

NE PAS TOUCHER LES CONDUCTEURS DE CE PHOTOVOLTAÏQUE SYSTEME SONT DANGEREUX ET PEUVENT ÊTRE ÉLECTROCUTÉS. TOUJOURS PORTER LE CASQUE DE PROTECTION EN CAS DE DÉFICIENCE DANS LE MODULE PV EST TOUJOURS VAL.

Do Not Remove
2102779618
402980

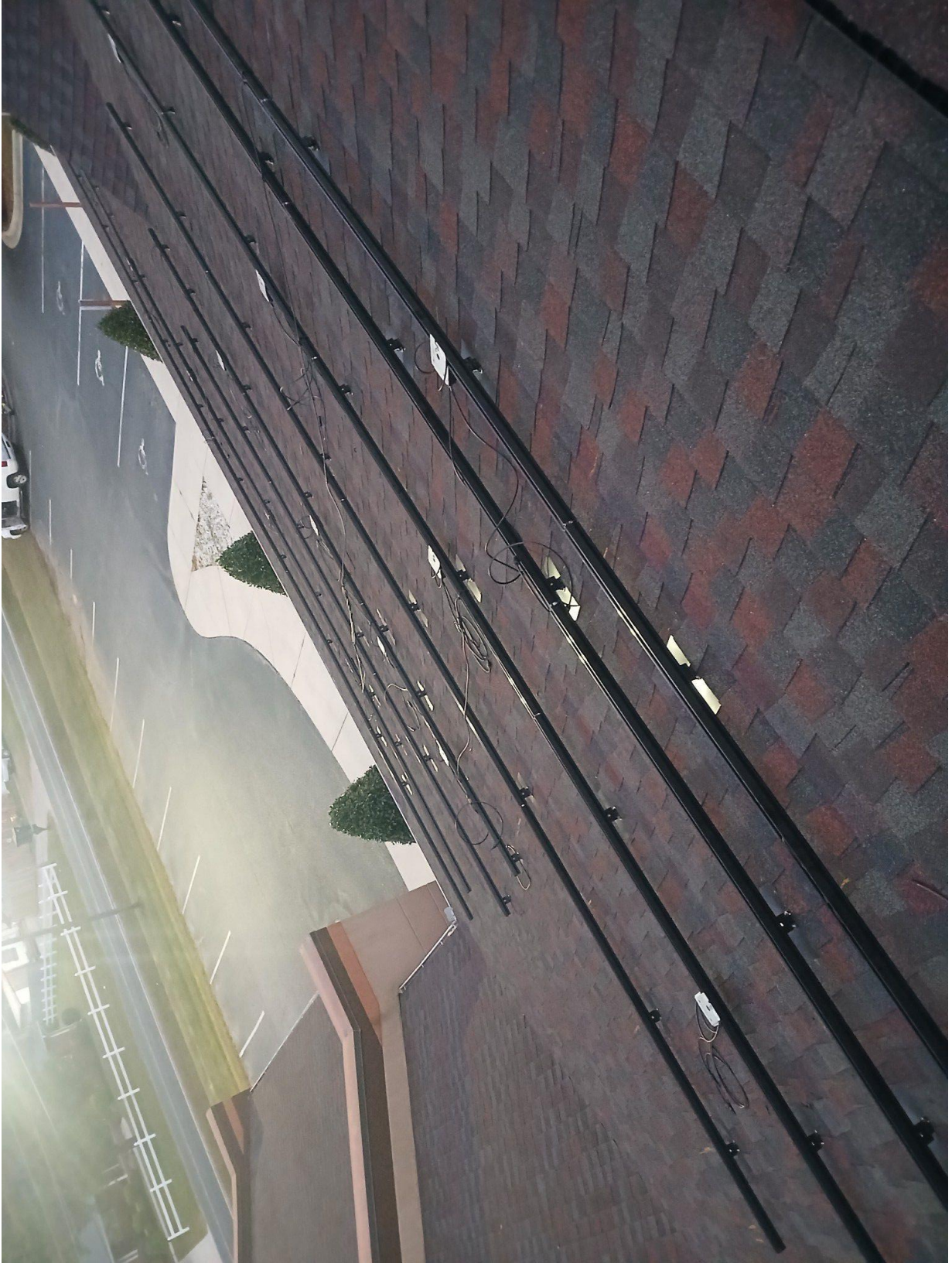
FC







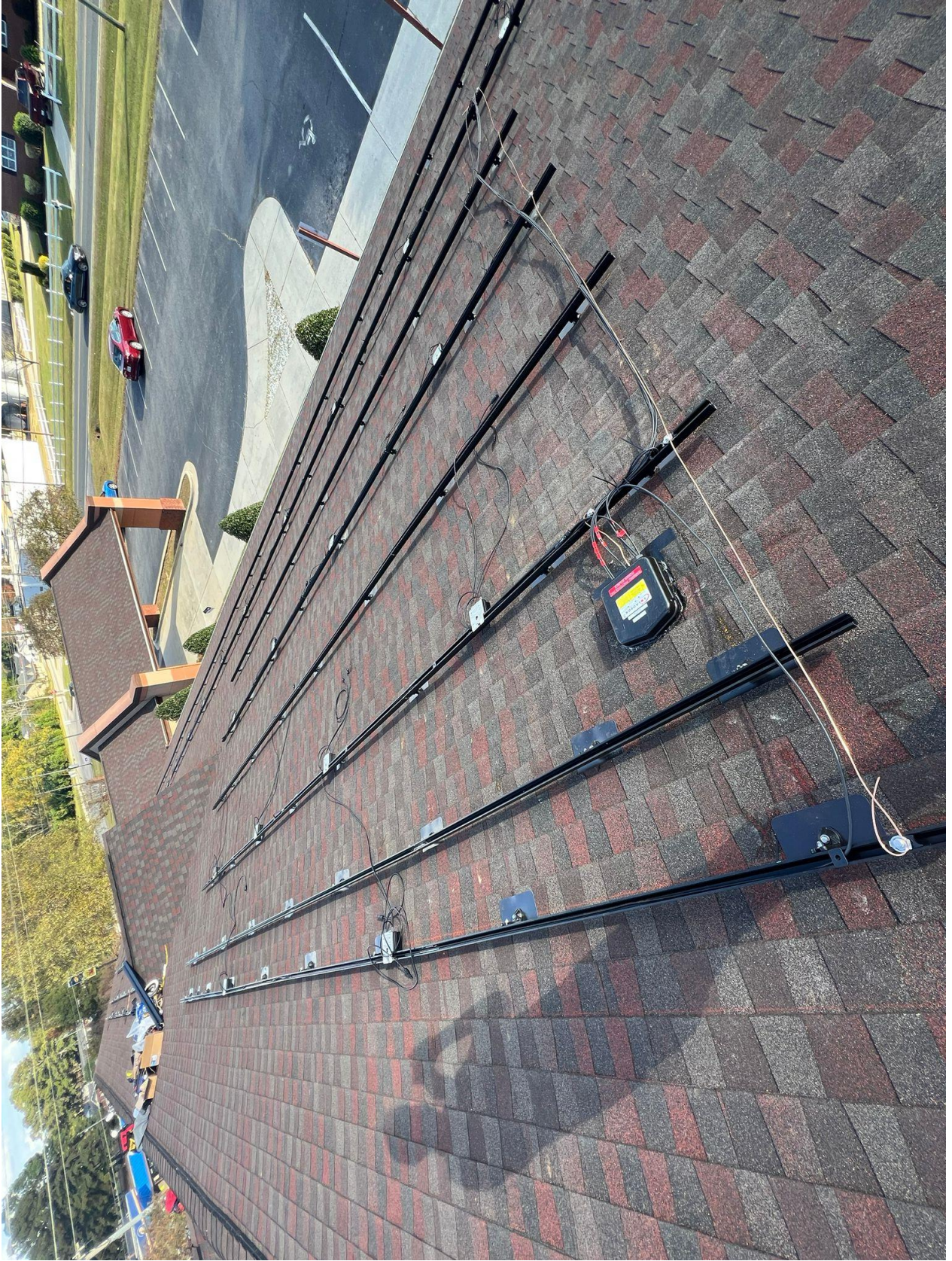




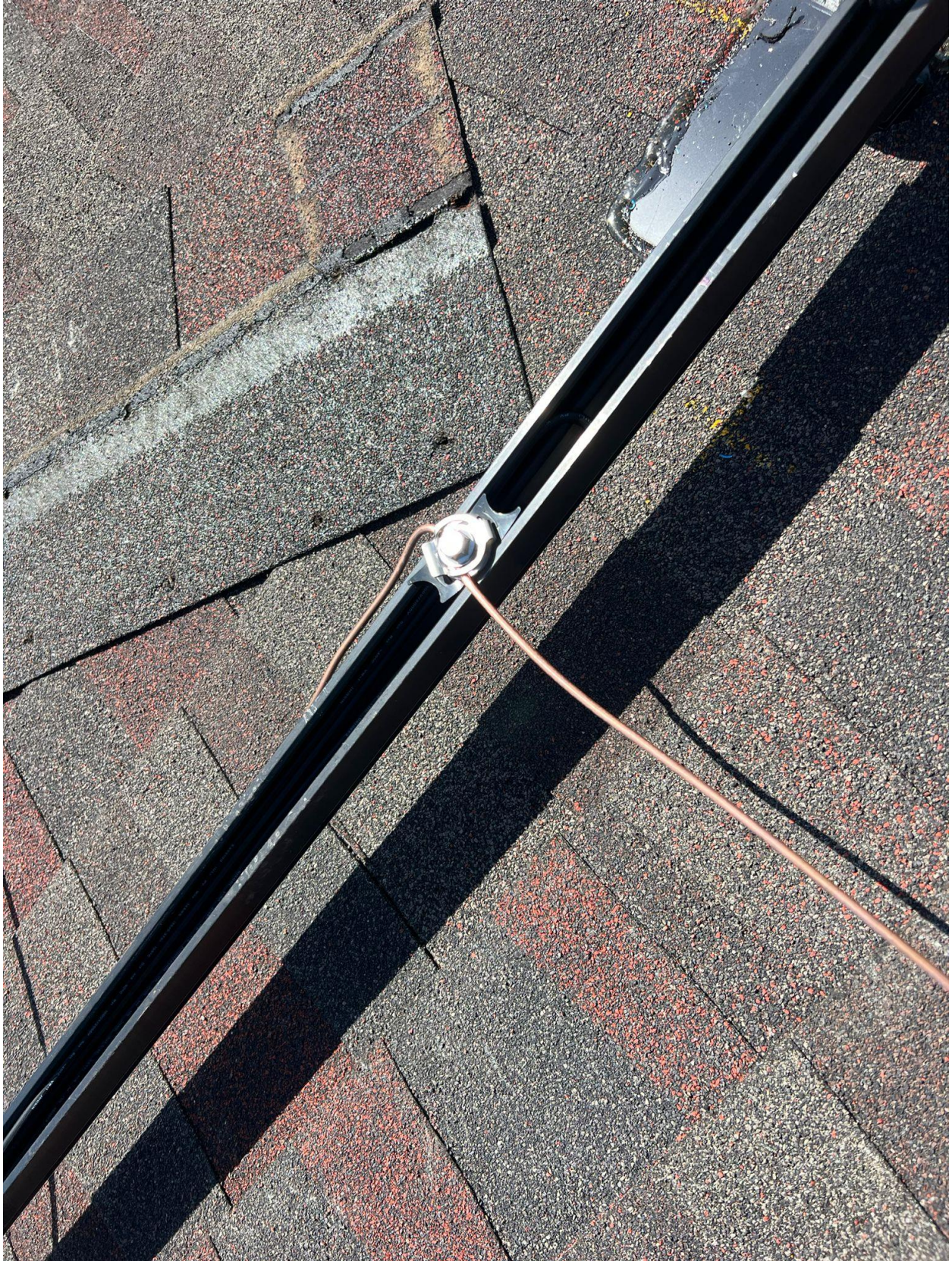


Crop





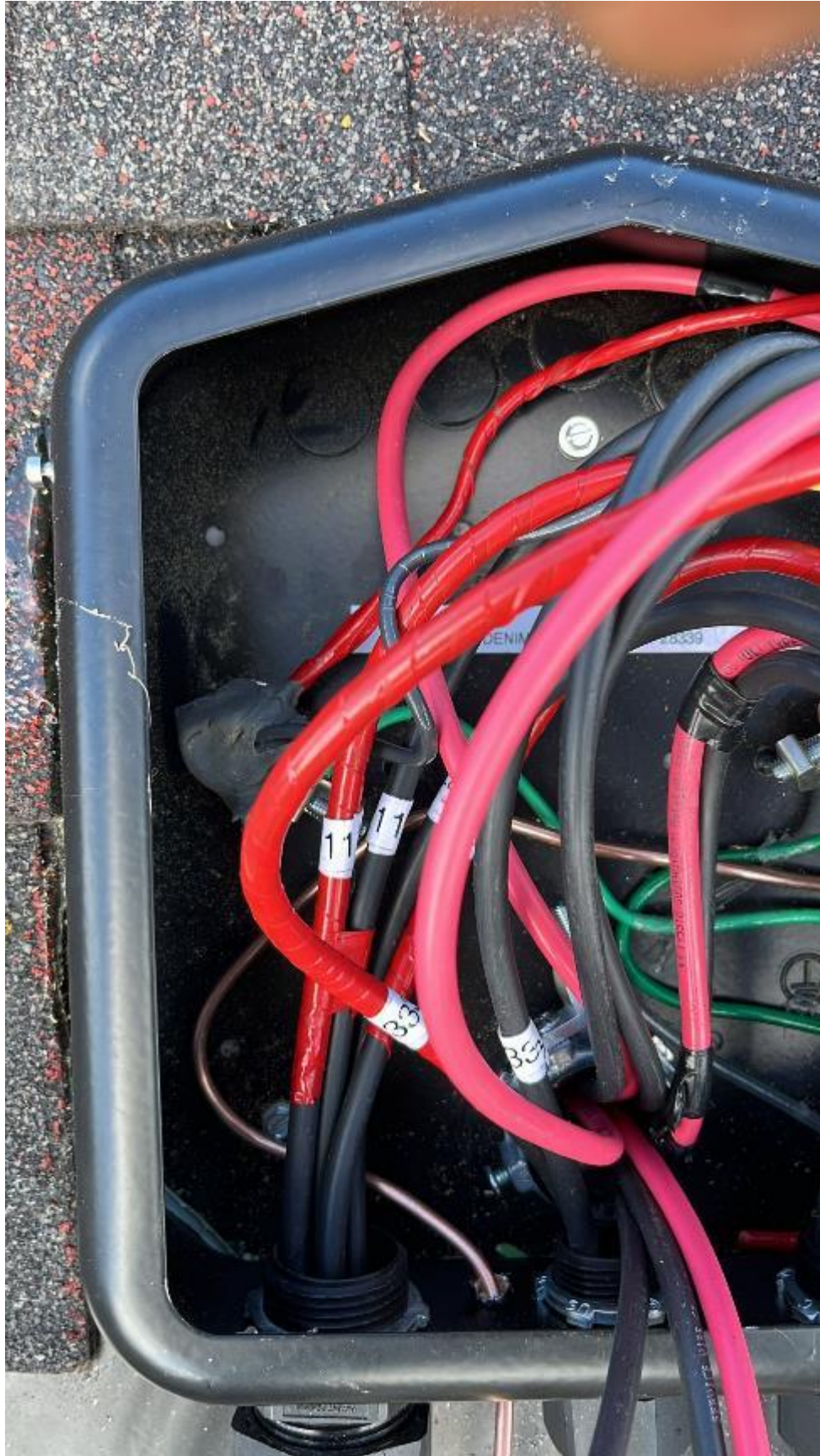




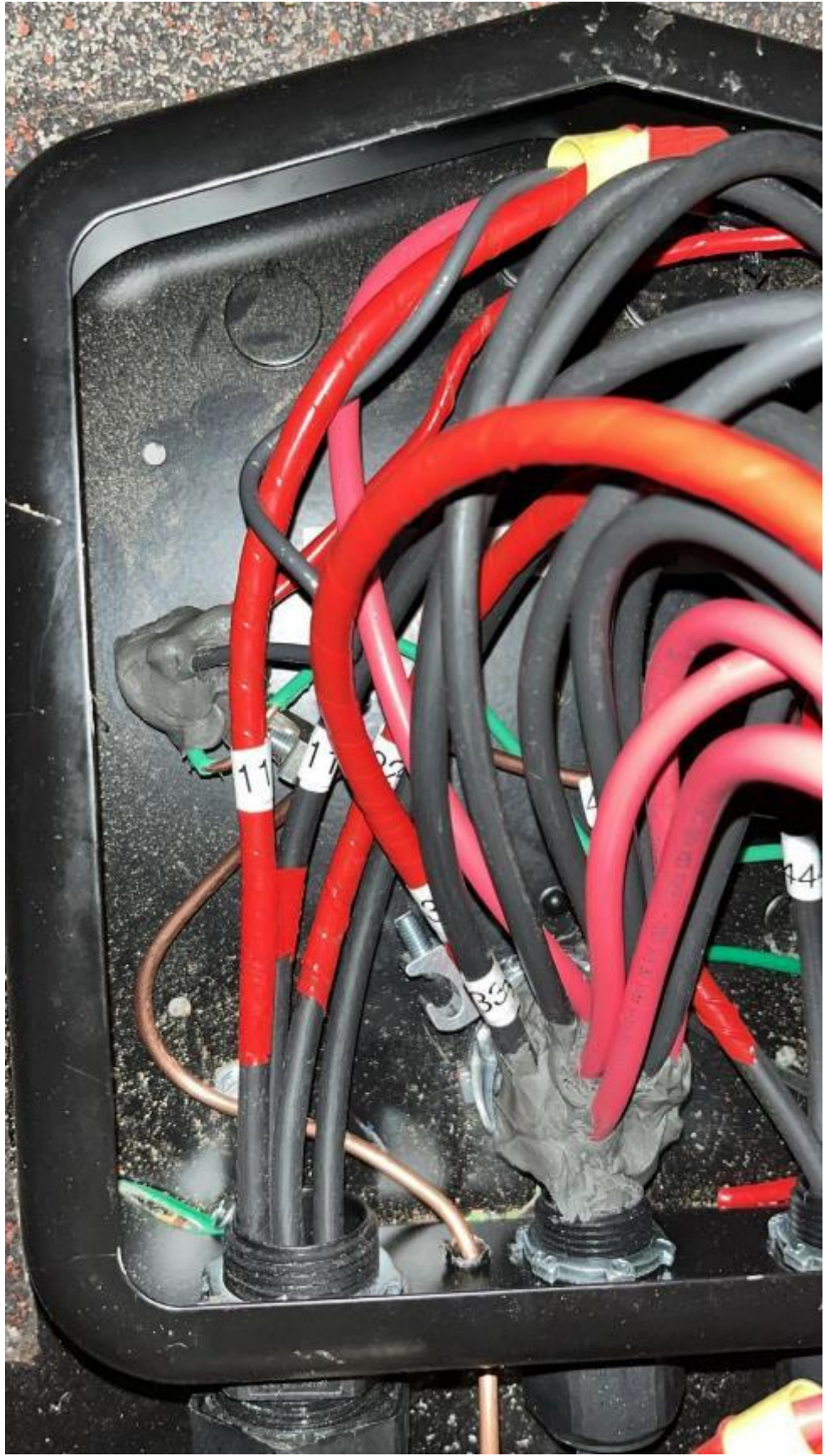
















1

901 DENIM DR.
ERIW, NC 28539

SOLADECK

Model: EDN40L2

WARNING / AVERTISSEMENT

Patent No. RUSTIG Enterprises

**WARNING: PHOTOVOLTAIC
POWER SOURCE**







