



United Restaurant Equipment Company Specifications

2654 S SAUNDERS STREET PO BOX 1186
RALEIGH, NORTH CAROLINA 27602-1186
(919) 832-4546 (800) 662-7342 Fax (919) 821-7050
EMAIL: sales@ureco.com WEB: www.ureco.com

04/11/2024

vendor of complete food service equipment and supplies for restaurants and institutions

To
Fiesta Mexicana
Jose Allerano
Coats, NC 27521
919-550-8888 (Contact)
919-889-4046 (Cell)
jose.fiestamex@gmail.com

Project
Fiesta Mexicana - Coats

From
United Restaurant Equipment Co.
Chris Joyce
2654 S. Saunders St.
P. O. Box 1186
Raleigh, NC 27603
919-832-4546
(919)832-4546 233 (Contact)
919-278-0048 (Cell)
(919)821-7050 (Fax)
cjoyce@ureco.com

ITEM 1 - FIESTA MEXICANA - COATS NC (1 REQ'D)
Captive-Aire Model 6589585

1 ea Model 6589585 SPECIFICATIONS Hood #1 - H1L (#1) - Job #6589585

6624EX-2-PSP-F - 10ft 6" Long Exhaust-Only Wall Canopy Hood with 16" Wide Front Perforated Supply Plenum with Built-in 3" Back Standoff

- 430 SS Where Exposed

- FILTER - 20" tall x 16" (19.625" by 15.625") wide Stainless Steel Captrate Solo filter with hook, ETL Listed. Particulate capture efficiency: 85% efficient at 9 microns, 76% efficient at 5 microns. Used on hoods shipped AFTER 7/27/17.

- L55 Series E26 Canopy Light Fixture - High Temp Assembly, Includes Clear Thermal and Shock Resistant Globe (L55 Fixture), Bulbs By Others

- Extra Fixtures- L55 Series E26 Canopy Light Fixture - High Temp Assembly, Includes Clear Thermal and Shock Resistant Globe (L55 Fixture)

- EXHAUST RISER - Factory installed 14" Diameter X 4" Height

- SUPPLY RISER - 12"x 24" Supply Riser with Volume Dampers

- 1/2 Pint Grease Cup New Style, Flanged Slotted

- FIELD WRAPPER 17.00" High Front, Left

- BACKSPLASH 122.00" High X 231.00" Long 430 SS Vertical (Includes End Caps & Divider Bars)

- BACKSPLASH - OUTSIDE CORNER 80.00" High X 2.00" Leg Length 430 SS Vertical (Includes End Caps & Divider Bars)

- BACKSPLASH - OUTSIDE CORNER 80.00" High X 2.00" Leg Length 430 SS Vertical (Includes End Caps & Divider Bars)

- LEFT VERTICAL END PANEL 27" Top Width, 21" Bottom Width, 80" High Insulated 430 SS

Hood #2 - H1R (#1) - Job #6589585

6624EX-2-PSP-F - 7ft 6" Long Exhaust-Only Wall Canopy Hood with 16" Wide Front Perforated Supply Plenum with Built-in 3" Back Standoff

- 430 SS Where Exposed

- Fire Cabinet on the Right Side 12.00" Width x 66.00" Length x 24.00" Height (Additional charges may apply for cabinet if not sold with fire system)

- FILTER - 20" tall x 16" (19.625" by 15.625") wide Stainless Steel Captrate Solo filter with hook, ETL Listed. Particulate capture efficiency: 85% efficient at 9 microns, 76% efficient at 5 microns. Used on hoods shipped AFTER 7/27/17.

- L55 Series E26 Canopy Light Fixture - High Temp Assembly, Includes Clear Thermal and Shock Resistant Globe (L55 Fixture), Bulbs By Others

- Extra Fixtures- L55 Series E26 Canopy Light Fixture - High Temp Assembly, Includes Clear Thermal and Shock Resistant Globe (L55 Fixture)

- EXHAUST RISER - Factory installed 14" Diameter X 4" Height

- SUPPLY RISER - 12"x 28" Supply Riser with Volume Dampers

- 1/2 Pint Grease Cup New Style, Flanged Slotted

- FIELD WRAPPER 17.00" High Front, Right

- Electrical Package Installation in Utility Cabinet by Plant.

- BACKSPLASH - OUTSIDE CORNER 80.00" High X 2.00" Leg Length 430 SS Vertical

- RIGHT VERTICAL END PANEL 27" Top Width, 21" Bottom Width, 80" High Insulated 430 SS

Fire System #1 - FS1 - Job #6589585

TANK-SP-3 Tank Fire Suppression 12 gallon Fire System in Utility Cabinet (includes pre-piped hood(s) with electric detection, tank(s), 24 VDC release mechanism, fire system agent, pressurized tanks, and electric pull station). (Formerly CAS-EWC).

Includes piping for hoods: 1, 2.

- Tank-based Fire Protection System equipped with Electronic Detection utilizing CORE board as a Listed Release Mechanism. Installed in Hood Utility Cabinet with integral hood prewire panel.

- Pressure Switch - Monitors Tank Pressure, Supervised Signal, TANK FIRE SUPPRESSION

- SC-EGVA1 GAS VALVE - 1" Electrical Shutoff Valve for use with HMI reset, 110V, 60Hz (#8214250). Includes upstream strainer assembly.

Fan #1 EADU180H - Exhaust Fan (EF1) - Job #6589585

EADU180H High Speed Direct Drive Centrifugal Upblast Exhaust Fan with, disconnect switch and 18-3/4" wheel.

Exhaust Fan handles 2258 CFM @ -1.500" wc ESP, Fan runs at 1202 RPM.

Exhaust Motor: 1.500 HP, 3 Phs, 208 V, 60 Hz, 6.6 FLA, ODP, Premium (E-Plus3) Eff.

Fiesta Mexicana - Coats

- Grease Cup for kitchen-duty centrifugal exhaust fans,

Box Dimensions 17-1/8 L X 5-1/16 W X 3-3/4 H (20 Gauge) (Includes Down Spout)

- Gasketing - Thermeez Woven Ceramic Tape - 1/4" x 1" with adhesive back - Max Temp 1500°F. To be applied between fan base and grease duct. Installed under fan base 1/2" from the inside edge of the base to match up with the curb top flanges.

- EF1 Curb CRB26.5x26E On Fan #1 Flat Curb

- Hinged Base for Curb. Standard Hinge attached to curb. Used on Fans with wheels 20 inches or smaller. 12 GA Galvanized.

- Vented Base for Curb

Fan #2 EADU85H - Exhaust Fan (EF2) - Job #6589585

EADU85H High Speed Direct Drive Centrifugal Upblast Exhaust Fan with speed control (speed control included for single phase only), disconnect switch and 15-3/4" wheel.

Exhaust Fan handles 1650 CFM @ -1.200" wc ESP, Fan runs at 1403 RPM.

Exhaust Motor: 0.750 HP, 3 Phs, 208 V, 60 Hz, 2.6 FLA, ODP (Open Drip Proof)

- Grease Cup for kitchen-duty centrifugal exhaust fans,

Box Dimensions 17-1/8 L X 5-1/16 W X 3-3/4 H (20 Gauge) (Includes Down Spout)

- Gasketing - Thermeez Woven Ceramic Tape - 1/4" x 1" with adhesive back - Max Temp 1500°F. To be applied between fan base and grease duct. Installed under fan base 1/2" from the inside edge of the base to match up with the curb top flanges.

- EF2 Curb CRB23X26E On Fan #2 Flat Curb

- Hinged Base for Curb. Standard Hinge attached to curb. Used on Fans with wheels 20 inches or smaller. 12 GA Galvanized.

- Vented Base for Curb

Fan #3 EA-A2-20D - Supply Fan (SF) - Job #6589585

EA-A2-20D Untempered Supply Unit with 20" Mixed Flow Direct Drive Fan in Size #2 Housing

Supply Fan handles 3126 CFM @ 0.500" wc ESP, Fan runs at 1139 RPM.

Supply Motor: 1.000 HP, 3 Phs, 208 V, 60 Hz, 3.8 FLA, ODP, Premium (E-Plus3) Eff.

Down Discharge - Air Flow Right -> Left

- Sloped Filtered Intake for Size #2 Modular Untempered Supply Unit.

26.813" Wide X 53.625" Long X 31.313" High.

Includes 2" MV EZ Kleen Metal Mesh Filters.

- Down Discharge Construction for Size 2 Untempered Direct Drive AHUs

- SF Curb CRB31X26 On Fan #3 Flat Curb

Electrical System #1 - Job #6589585

SC-321110MA 3 Phase w/ control for 2 Exhaust Fans, 1 Supply Fan, Exhaust on in Fire, Lights out in Fire, Relay On/Off with Supply Fan, Fan(s) On/Off Thermostatically Controlled. Room temperature sensor shipped loose for field installation. INVERTER DUTY 3 PHASE MOTOR REQUIRED FOR USE WITH VFD. Includes 2 Duct Thermostat kits.

- ESV751N02YXB571 - Variable Frequency Drive - 1 HP Max., 200/240 V, Single or Three Phase Input, 4.2 A Max., NEMA 1 Enclosure, with 2RJ-45 FOR MODBUS

- ESV751N02YXB571 - Variable Frequency Drive - 1 HP Max., 200/240 V, Single or Three Phase Input, 4.2 A Max., NEMA 1 Enclosure, with 2RJ-45 FOR MODBUS

- ESV152N02YXB571 - Variable Frequency Drive - 2 HP Max., 200/240 V, Single or Three Phase Input, 7.0 A Max., NEMA 1 Enclosure, with 2RJ-45 FOR MODBUS

- Digital Prewire Lighting Relay Kit. Includes hood lighting relay & terminal blocks. Allows for up to 1400W of lighting each.

- Thermistor CABLE - 18/2 AWG GREEN WHITE, plenum rated. USED for thermistor duct stat. Per Foot Price.

Factory Services

Service Design Verification for Exhaust Fan

Service Design Verification for Hood

Service Design Verification for Standard Electrical Control Package

Service Design Verification for TANK Fire Suppression

Service Design Verification for Untempered Supply Fan

SERVICE DESIGN VERIFICATION DISCLAIMER _____

Field Service Technician is responsible for one trip to site to ensure the above equipment is operating within design specifications. All equipment must be operational. Fire suppression system should be hooked-up and armed. Additional trips will result in charges to be covered by others.

INSTALLATION BY OTHERS _____

By Others:

Installation, ductwork, patching, all electrical field wiring, start-up & balance, gas or electric shutdown for fire system hook-up.

Note:

Customer is responsible for additional labor charges as a result of cooking equipment layout changes after the release of the order, union labor or prevailing wage charges, or additional trips by fire system distributor caused by jobsite delays, permits, fees or test required by local authority. Submittal will specify applicable testing and approval agencies.

Fiesta Mexicana - Coats

Hook up for the fire system must be performed in accordance with the product manual by a Factory Trained Distributor. Failure to utilize a factory trained distributor voids the product warranty. Econ-Air requirement for all field hook ups:

All fire system installation materials and methods must be in accordance with the product manual, which includes but not limited to: fire system piping, gas shut-off valves, low-voltage wiring and conduit, verification of appliance coverage, and start-up and inspection procedures.

Econ-Air product must be installed in accordance with installation instructions provided with equipment or available on our web site at www.econair.com.

Ductwork must be designed and installed in accordance with AMCA and ASHRAE standards as presented in Econ-Air "Guide to Designing Air Flow Systems", available here.

Hood and Ductwork hanging brackets and angles must be supported with 1/2" - 13 TPI grade 5 (minimum) all-thread. Sandwich hanging angles and ceiling anchor points with 1/2" grade 5 (minimum) steel flat washers and 1/2" - 13 TPI grade 5 (minimum) hex nuts. A doubled hex nut configuration must be used beneath hood and duct hanging brackets and above ceiling anchors (single hex nut beneath hanging angle is only acceptable for full length and supply plenum hanging angle types). Maintain 1/4" of exposed threads beneath bottom hex nut. Torque all hex nuts to 57 ft-lbs. Reference the installation manual for additional details and limitations of all structural supports.

WARRANTY _____

Standard Product Warranty

This equipment is warranted to be free from defects in materials and workmanship, under normal use and service, for a period of 2-years from date of shipment.

Warranty Instructions

This Standard Product Warranty shall not apply if:

1. The equipment is not installed by a qualified installer per the MANUFACTURER'S installation instructions shipped with the product.
2. The equipment is not installed in accordance with federal, state and local codes and regulations.
3. The equipment is misused or neglected, or not maintained per the MANUFACTURER'S maintenance instructions.
4. The equipment is not operated within its published capacity.
5. The invoice is not paid within the terms of the sales agreement.

The MANUFACTURER shall not be liable for incidental and consequential losses and damages potentially attributable to malfunctioning equipment. Should any part of the equipment prove to be defective in material or workmanship within the Standard Product Warranty, upon examination by the MANUFACTURER, such part will be repaired or replaced by MANUFACTURER at no charge. The BUYER shall pay all labor costs incurred in connection with such repair or replacement. Equipment shall not be returned without MANUFACTURER'S prior authorization and all returned equipment shall be shipped by the BUYER, freight

prepaid to a destination determined by the MANUFACTURER.

NOTE: To receive warranty coverage, register this product by filling out the Start-up and Maintenance Document. Fax the form to 1-919-554-9374 or call 1-866-784-6900 for email information.

ITEM 2 - CONVECTION OVEN, GAS (1 REQ'D)

Southbend (Middleby) Model SLGS/12SC Dimensions: 55(h) x 38(w) x 38.5(d)

(QUICK SHIP) SilverStar Convection Oven, gas, single deck, standard depth, solid state controls, interior light, stainless steel front, top, sides & 60/40 dependent doors, 26" legs, 72,000 BTU, CSA, NSF (Ships within 2 days, maximum quantity = 2 per order)



- 1 ea Quick Ship items have limited configurations & that standard configuration may not apply. Contact factory for details
- 1 ea Domestic Shipping, inside of North America
- 1 ea Standard (1) year limited parts and labor warranty (reference warranty document for details)
- 1 ea LP Gas
- 1 ea Standard power system
- 1 ea Voltage to be specified

ELECTRICAL

| | VOLTS | CYCLE | PHASE | CONN | AFF | NEMA | AMPS | KW | HP | MCA | MOCP |
|---|-------|-------|-------|------|-----|------|------|----|-----|-----|------|
| 1 | | | | | | | | | 1/2 | | |
| 2 | | | | | | | | | | | |

ELECTRICAL 2 REMARKS

Voltage to be specified

GAS

| | SIZE | MBTU | KW | CONN |
|---|------|------|----|------|
| 1 | 3/4" | 72.0 | | |

STEAM

| | INLET SIZE | RETURN SIZE | LB/HR | PSIG (MIN) | PSIG (MAX) |
|---|------------|-------------|-------|------------|------------|
| 1 | | | | | |

ITEM 2.1 - GAS CONNECTOR HOSE KIT / ASSEMBLY (1 kt REQ'D)

Dormont Manufacturing Model RG7548 Dimensions: 26.63(h) x 10.38(w) x 2.88(d)

Dormont ReliaGuard® Foodservice Gas Connector Kit, 3/4" inside dia., 48" long, covered with stainless steel braid, coated with gray PVC, (1) quick disconnect, coiled restraining cable with hardware, limited 5 year warranty



ITEM 2.2 - CASTERS (1 st REQ'D)

Krowne Model 28-147S

Krowne Heavy Duty 3/4"-10 Threaded Stem Caster, swivel with brake, 5" diameter, 3/4"-10 x 1" threaded stem, 500 lbs per caster load capacity (set of 4)



ITEM 3 - RANGE, 60", 10 OPEN BURNERS (1 REQ'D)

Southbend (Middleby) Model S60DD Dimensions: 59.5(h) x 60.75(w) x 34(d)

S-Series Restaurant Range, gas, 60", (10) 28,000 BTU open burners, (2) standard ovens, snap action thermostat, removable cast iron grates, crumb drawer & shelf, hinged lower valve panel, includes (1) rack per oven, stainless steel front, sides, shelf, 4" front rail & 6" adjustable legs, 350,000 BTU, CSA, NSF

- 1 ea Domestic Shipping, inside of North America
- 1 ea Standard one year limited warranty (range)
- 1 ea LP gas



GAS

| | SIZE | MBTU | KW | CONN |
|---|------|-------|----|------|
| 1 | 3/4" | 350.0 | | |

STEAM

| | INLET SIZE | RETURN SIZE | LB/HR | PSIG (MIN) | PSIG (MAX) |
|---|------------|-------------|-------|------------|------------|
| 1 | | | | | |

ITEM 3.1 - GAS CONNECTOR HOSE KIT / ASSEMBLY (1 kt REQ'D)

Dormont Manufacturing Model RG7548 Dimensions: 26.63(h) x 10.38(w) x 2.88(d)

Dormont ReliaGuard® Foodservice Gas Connector Kit, 3/4" inside dia., 48" long, covered with stainless steel braid, coated with gray PVC, (1) quick disconnect, coiled restraining cable with hardware, limited 5 year warranty



ITEM 3.2 - CASTERS (1 st REQ'D)

Krowne Model 28-147S

Krowne Heavy Duty 3/4"-10 Threaded Stem Caster, swivel with brake, 5" diameter, 3/4"-10 x 1" threaded stem, 500 lbs per caster load capacity (set of 4)



ITEM 4 - GRIDDLE, GAS, COUNTERTOP (1 REQ'D)

Vulcan Model VMG60 Dimensions: 15.25(h) x 60(w) x 31.5(d)

Heavy Duty Griddle, countertop, gas, 60" W x 24" D cooking surface, 1" thick polished steel griddle plate, (5) burners, 4" back & tapered side splashes, manual controls, (2) 6 quarts grease drawer, stainless & aluminized steel chassis frame, 11-1/8" low profile cooking height on 4" adjustable legs, 135,000 BTU, cCSAus, NSF

- 1 ea 1 year limited parts & labor warranty, standard
- 1 ea LP gas (specify elevation if over 2,000 ft.)



GAS

| | SIZE | MBTU | KW | CONN |
|---|------|-------|----|------|
| 1 | 3/4" | 135.0 | | |

STEAM

| | INLET SIZE | RETURN SIZE | LB/HR | PSIG (MIN) | PSIG (MAX) |
|---|------------|-------------|-------|------------|------------|
| 1 | | | | | |

ITEM 4.1 - GAS CONNECTOR HOSE KIT / ASSEMBLY (1 kt REQ'D)

Dormont Manufacturing Model RG7548 Dimensions: 26.63(h) x 10.38(w) x 2.88(d)

Dormont ReliaGuard® Foodservice Gas Connector Kit, 3/4" inside dia., 48" long, covered with stainless steel braid, coated with gray PVC, (1) quick disconnect, coiled restraining cable with hardware, limited 5 year warranty



ITEM 5 - GAS COUNTERTOP FRYER (1 REQ'D)

Globe (Middleby) Model GF15G Dimensions: 30.5(h) x 31(w) x 13.5(d)

(QUICK SHIP) Fryer, Gas, Natural, countertop, single pot, 15-lbs. fat capacity, 13,250 BTU per burner, stainless steel construction, stainless steel fry pot with drain valve & extension pipe, (1) standard nickel-plated fry basket with insulated handle, stainless steel tube burners inside rectangular heat chambers, thermostat protection, 26,500 BTU, cETLus (Ships within 1-2 days)



- 1 ea Quick Ship items have limited configurations & that standard configuration may not apply. Contact factory for details
- 1 ea 2 year parts & labor warranty, standard

| GAS | | | | |
|-----|------|------|----|------|
| | SIZE | MBTU | KW | CONN |
| 1 | 3/4" | 26.5 | | |

| STEAM | | | | | |
|-------|------------|-------------|-------|------------|------------|
| | INLET SIZE | RETURN SIZE | LB/HR | PSIG (MIN) | PSIG (MAX) |
| 1 | | | | | |

ITEM 6 - GAS FLOOR FRYER (1 REQ'D)

Atosa USA, Inc. Model ATFS-75-LP Dimensions: 44.4(h) x 21.1(w) x 30.1(d)

CookRite Fryer, LP gas, floor model, 21-1/10"W x 30-1/10" x 44-2/5"H, 75 lb. capacity, (5) burners, standby pilots, 200°F- 400°F temperature range, self-reset high temperature limiting device,, safety valve, (2) nickel plated baskets with coated handles, basket hanger, oil cooling zone seated in the bottom of the tank, stainless steel structure, (4) casters, cETLus, ETL-Sanitation



- 1 ea 1 year parts & labor warranty (continental USA only)
- 1 ea LP gas, 150,000 total BTU's

| GAS | | | | |
|-----|------|-------|----|------|
| | SIZE | MBTU | KW | CONN |
| 1 | 3/4" | 150.0 | | |

| STEAM | | | | | |
|-------|------------|-------------|-------|------------|------------|
| | INLET SIZE | RETURN SIZE | LB/HR | PSIG (MIN) | PSIG (MAX) |
| 1 | | | | | |

ITEM 6.1 - GAS CONNECTOR HOSE KIT / ASSEMBLY (1 kt REQ'D)

Dormont Manufacturing Model RG7548 Dimensions: 26.63(h) x 10.38(w) x 2.88(d)

Dormont ReliaGuard® Foodservice Gas Connector Kit, 3/4" inside dia., 48" long, covered with stainless steel braid, coated with gray PVC, (1) quick disconnect, coiled restraining cable with hardware, limited 5 year warranty



ITEM 7 - REACH-IN REFRIGERATOR (1 REQ'D)

True Mfg. - General Foodservice Model T-23-HC Dimensions: 78.38(h) x 27(w) x 29.5(d)

Refrigerator, reach-in, one-section, (1) solid door, (3) PVC coated adjustable wire shelves, interior lighting, stainless steel door, stainless steel front, aluminum sides, clear coated aluminum interior with stainless steel floor, 4" castors, R290 Hydrocarbon refrigerant, 1/4 HP, 115v/60/1-ph, 2.2 amps, NEMA 5-15P, cULus, UL EPH Classified, CE, Made in USA, ENERGY STAR®



- 1 ea NOTE: Commonly stocked model in right & left hinge; verify availability with factory
- 1 ea Self-contained refrigeration standard
- 1 ea 7 year compressor warranty, 6 years parts warranty, 5 year labor warranty standard. Please visit www.truemfg.com for specifics standard
- 1 ea Left door hinging
- 1 ea 4" stem castors, standard (adds 5" to OA height)

ELECTRICAL

| | VOLTS | CYCLE | PHASE | CONN | AFF | NEMA | AMPS | KW | HP | MCA | MOCP |
|---|-------|-------|-------|-------------|-----|-------|------|----|-----|-----|------|
| 1 | 115 | 60 | 1 | Cord & Plug | | 5-15P | 2.2 | | 1/4 | | |

ITEM 8 - SANDWICH / SALAD PREPARATION REFRIGERATOR (1 REQ'D)

True Mfg. - General Foodservice Model TSSU-27-08-HC Dimensions: 36.75(h) x 27.63(w) x 30.13(d)

Sandwich/Salad Unit, (8) 1/6 size (4"D) poly pans, stainless steel insulated cover, 11-3/4"D cutting board, (1) door, (2) PVC coated adjustable wire shelves, stainless steel top, front & sides, aluminum back, aluminum interior with stainless steel floor, R290 Hydrocarbon refrigerant, 1/5 HP, 115v/60/1-ph, 3.5 amps, NEMA 5-15P, cULus, UL EPH Classified, Made in USA



- 1 ea NOTE: Commonly stocked model in right & left hinge; verify availability with factory
- 1 ea Self-contained refrigeration standard
- 1 ea 7 year compressor warranty, 6 years parts warranty, 5 year labor warranty standard. Please visit www.truemfg.com for specifics standard
- 1 ea Double Overshelf, 27-5/8"W x 16"D x 33-1/32"H, for TSSU/TUC/TWT-27 & Mega, stainless steel
- 1 ea Castors, 5" (36" work surface height) standard

ELECTRICAL

| | VOLTS | CYCLE | PHASE | CONN | AFF | NEMA | AMPS | KW | HP | MCA | MOCP |
|---|-------|-------|-------|-------------|-----|-------|------|----|-----|-----|------|
| 1 | 115 | 60 | 1 | Cord & Plug | | 5-15P | 3.5 | | 1/5 | | |

ITEM 9 - MEGA TOP SANDWICH / SALAD PREPARATION REFRIGERATOR (1 REQ'D)

True Mfg. - General Foodservice Model TSSU-60-24M-B-ST-HC Dimensions: 40.38(h) x 60.38(w) x 34.06(d)

Mega Top Sandwich/Salad Unit, (24) 1/6 size (4"D) poly pans, (2) stainless steel insulated covers, 8-7/8"D cutting board, (2) full doors, (4) PVC coated adjustable wire shelves, stainless steel top/front/sides, GalFan coated steel back, aluminum interior with stainless steel floor, R290 Hydrocarbon refrigerant, 1/3 HP, 115v/60/1-ph, 6.5 amps, NEMA 5-15P, cULus, UL EPH Classified, Made in USA



- 1 ea Self-contained refrigeration standard
- 1 ea 7 year compressor warranty, 6 years parts warranty, 5 year labor warranty standard. Please visit www.truemfg.com for specifics standard
- 1 ea <Optional> Double Overshelf, 60-3/8"W x 16"D x 33-1/32"H, for TSSU/TUC/TWT-60, TPP-60/TUC/TWT-60-32 & Mega, stainless steel
- 1 ea Castors, 5" (36" work surface height) standard

ELECTRICAL

| | VOLTS | CYCLE | PHASE | CONN | AFF | NEMA | AMPS | KW | HP | MCA | MOCP |
|---|-------|-------|-------|-------------|-----|-------|------|----|-----|-----|------|
| 1 | 115 | 60 | 1 | Cord & Plug | | 5-15P | 6.5 | | 1/3 | | |

ITEM 10 - CHEF BASE (1 REQ'D)

True Mfg. - General Foodservice Model TRCB-82-86-HC Dimensions: 20.38(h) x 86.25(w) x 32.13(d)

Refrigerated Chef Base, 82-3/8"W base, 86-1/4"W one-piece 300 series 18 gauge stainless steel top with V edge, (4) drawers (left drawer accommodates (3) and right drawer accommodates (2) 12" x 20" x 4" pans, NOT included), stainless steel front/sides, aluminum back, aluminum interior with stainless steel floor, 4" castors, R290 Hydrocarbon refrigerant, 1/3 HP, 115v/60/1-ph, 4.4 amps, NEMA 5-15P, cULus, UL EPH Classified, CE, Made in USA



- 1 ea Self-contained refrigeration standard
- 1 ea 7 year compressor warranty, 6 years parts warranty, 5 year labor warranty standard. Please visit www.truemfg.com for specifics standard
- 1 ea Standard marine edge top
- 1 ea 4" Castors, standard

ELECTRICAL

| | VOLTS | CYCLE | PHASE | CONN | AFF | NEMA | AMPS | KW | HP | MCA | MOCP |
|---|-------|-------|-------|-------------|-----|-------|------|----|-----|-----|------|
| 1 | 115 | 60 | 1 | Cord & Plug | | 5-15P | 4.4 | | 1/3 | | |

ITEM 11 - WORKTOP FREEZER (1 REQ'D)

True Mfg. - General Foodservice Model TWT-48F-HC Dimensions: 33.38(h) x 48.38(w) x 30.13(d)

Work Top Freezer, two-section, -10°F, rear mounted self-contained refrigeration, stainless steel top with splash, (2) solid stainless steel doors, (4) PVC coated adjustable wire shelves, stainless steel front & sides, with aluminum finished back, aluminum interior with stainless steel floor, R290 Hydrocarbon refrigerant, 1/2 HP, 115v/60/1-ph, 3.2 amps, NEMA 5-15P, cULus, UL EPH Classified, Made in USA, ENERGY STAR®



- 1 ea Self-contained refrigeration standard
- 1 ea 7 year compressor warranty, 6 years parts warranty, 5 year labor warranty standard.
Please visit www.truemfg.com for specifics standard
- 1 ea Bolt locks, factory installed, standard
- 1 ea Castors, 5" (36" work surface height) standard

ELECTRICAL

| | VOLTS | CYCLE | PHASE | CONN | AFF | NEMA | AMPS | KW | HP | MCA | MOCP |
|---|-------|-------|-------|-------------|-----|-------|------|----|-----|-----|------|
| 1 | 115 | 60 | 1 | Cord & Plug | | 5-15P | 3.2 | | 1/2 | | |

ITEM 12 - HOT FOOD SERVING COUNTER / TABLE (1 REQ'D)

Eagle Group Model SHT5-LP Dimensions: 34(h) x 79(w) x 30.5(d)

Hot Food Table, liquid propane, open base, 79"W, (5) 12" x 20" (dry) wells with burner controls in recessed panel, adjustable gas valve & pilot light per burner, 22/430 stainless steel top & body, 8"D polyethylene cutting board, stainless steel undershelf & 1-5/8" dia. tubular legs, adjustable plastic feet, gas regulator included, 17,500 BTU, cULus, NSF (must be used with Eagle Group Spillage Pans #302027 or #304141)

- 5 ea Model 302027 Spillage Pan, deep-drawn stainless steel, fully-coved, 6-1/2" Deep, for wet applications

GAS

| | SIZE | MBTU | KW | CONN |
|---|------|------|----|------|
| 1 | 1/2" | 17.5 | | |

STEAM

| | INLET SIZE | RETURN SIZE | LB/HR | PSIG (MIN) | PSIG (MAX) |
|---|------------|-------------|-------|------------|------------|
| 1 | | | | | |

WATER

| | HOT SIZE | HOT AFF | HOT GPH | COLD SIZE | COLD AFF | FILTERED SIZE | FILTERED AFF | CONDENSER INLET SIZE | CONDENSER OUTLET SIZE |
|---|----------|---------|---------|-----------|----------|---------------|--------------|----------------------|-----------------------|
| 1 | | | | | | | | | |

WASTE

| | INDIRECT SIZE | DIRECT SIZE |
|---|---------------|-------------|
| 1 | | 3/4" |

ITEM 13 - HEAT LAMP (3 REQ'D)

Hatco Model GRA-60D3 Dimensions: 2.5(h) x 60(w) x 15(d)

Glo-Ray® Infrared Strip Heater, 60" W, standard wattage, tubular metal heater rod, double heater rod housing 3" spacing, aluminum construction, 2100 watts, NSF, cULus, Made in USA



- 1 ea NOTE: Sale of this product must comply with Hatco's Minimum Resale Price Policy; consult order acknowledgement for details
- 1 ea NOTE: Includes 24/7 parts & service assistance, call 414-671-6350
- 3 ea One year on-site parts & labor warranty, plus one additional year parts only warranty on all Glo-Ray metal sheathed elements
- 3 ea 120v/60/1-ph
- 3 ea Model BLT TOG-2 (2) Built-in toggle controls (remote recommended) (available at time of purchase only)

3 ea Model STANDARD Clear Anodized Aluminum housing, finish, standard (available at time of purchase only)

ELECTRICAL

| | VOLTS | CYCLE | PHASE | CONN | AFF | NEMA | AMPS | KW | HP | MCA | MOCP |
|---|-------|-------|-------|------|-----|------|------|-----|----|-----|------|
| 1 | | | | | | | | 2.1 | | | |
| 2 | 120 | 60 | 1 | | | | | | | | |

ITEM 14 - ICE MAKER, CUBE-STYLE (1 REQ'D)

Manitowoc Model IDT1200C Dimensions: 29.5(h) x 30(w) x 24.5(d)



Indigo NXT™ QuietQube® Ice Maker, cube-style, air-cooled, designed for remote refrigeration (condensing unit and lines sold separately), 30"W x 24-1/2"D x 29-1/2"H, production capacity up to 1130 lb/24 hours at 70°/50° (930 lb AHRI certified at 90°/70°), DuraTech™ exterior, dice size cubes, CVD Technology, NSF, cULus, CE

- 1 ea NOTE: THIS MODEL IS NOT INCLUDED IN THE SELECT PROGRAM
- 1 ea Model WARRANTY-ICE-R 3 year parts & labor (Machine), 5 year parts & labor (Evaporator), standard
- 1 ea (-161) 115v/60/1-ph, 1.1 amps, standard
- 1 ea NOTE: Tubing required for installation, must select length required
- 1 ea Model AR-40000-P Arctic Pure® Plus Primary Water Filter Assembly, includes head, shroud, hardware, mounting assembly, & (1) filter cartridge, 40,000 gallon capacity, 1,001-2,500 lbs./ice per day
- 1 ea Model WARRANTY-ARCPURE 3 year parts & labor warranty on cap, housing, hardware, & mounting assembly (does not refer to filter cartridge), standard
- 1 ea Model D970 Ice Bin, 48"W x 34"D x 50"H, with side-hinged front-opening door, side grips, 882 lbs. application capacity, AHRI certified 29.7 cu. ft., for top-mounted ice maker, Duratech exterior, NSF
- 1 ea Model WARRANTY-BIN/DISP 3 year parts & labor warranty, standard
- 1 ea Model K00470 Bin Adapter, for 30" Indigo, Indigo NXT, RFF, RNF, ice machine on a 48" B or D-970 bin
- 1 ea Legs, 6" adjustable stainless steel, standard

ELECTRICAL

| | VOLTS | CYCLE | PHASE | CONN | AFF | NEMA | AMPS | KW | HP | MCA | MOCP |
|---|-------|-------|-------|------|-----|------|------|----|----|-----|------|
| 1 | 115 | 60 | 1 | | | | 1.1 | | | | |

WATER

| | HOT SIZE | HOT AFF | HOT GPH | COLD SIZE | COLD AFF | FILTERED SIZE | FILTERED AFF | CONDENSER INLET SIZE | CONDENSER OUTLET SIZE |
|---|----------|---------|---------|-----------|----------|---------------|--------------|----------------------|-----------------------|
| 1 | | | | 3/8" | | | | | |
| 2 | | | | | | | | | |

WASTE

| | INDIRECT SIZE | DIRECT SIZE |
|---|---------------|-------------|
| 1 | 1/2" | |
| 2 | 3/4" | |

PLUMBING 1 REMARKS

Drain for ice maker

ITEM 15 - CHIP WARMER (1 REQ'D)

Vulcan Model VCW46 Dimensions: 38(h) x 26.5(w) x 30.5(d)



Chip Warmer, top load style, first in/first out design, clamp-on removable heating module, 46 gallon capacity, adjustable rear-mounted thermostat (90° - 190°F), stainless steel construction, 4"-5" adjustable legs, 120v/60/1-ph, 1500 watts, 12.5 amps, cord, NEMA 5-15P, cULus, UL EPH

- 1 ea 10 year warranty on heating elements, standard

ELECTRICAL

| | VOLTS | CYCLE | PHASE | CONN | AFF | NEMA | AMPS | KW | HP | MCA | MOCP |
|---|-------|-------|-------|-------------|-----|-------|------|-----|----|-----|------|
| 1 | 120 | 60 | 1 | Cord & Plug | | 5-15P | 12.5 | 1.5 | | | |

ITEM 16 - AIR CURTAIN (1 REQ'D)

Berner Model SHD07-1048A

Sanitation Certified Series High Performance Air Curtain, 48" long, unheated, (1) 3/4 hp motor, for doors up to 7-feet high, specify exterior, indoor or exterior mounting, cULus, UL EPH Classified, MADE IN USA



- 1 ea Five year parts warranty (unheated units)
- 1 ea If special freight fees are requested, (See below) all applicable fees will be added to the invoice; fees subject to change; contact factory for addition information.
- 1 ea Model A 120v/60/1-ph
- 1 ea Model 91STR120-BA-M-24-BR Basic Control Package, 24V, includes, magnetic reed door switch with transformer, for 120-240V, brown
- 1 ea Model 9503MRS1F2NCK-BR Magnetic Reed Door Switch, brown, multiple manual door openings require additional switches
- 1 ea Black powder coat exterior finish, add suffix "BK" to model no.
- 1 ea Model WMP-BK Wall mounting plate, black (add suffix WMP-BK to desired length)

ELECTRICAL

| | VOLTS | CYCLE | PHASE | CONN | AFF | NEMA | AMPS | KW | HP | MCA | MOCP |
|---|-------|-------|-------|--------|-----|------|------|----|-----|-----|------|
| 1 | | | | | | | | | 3/4 | | |
| 2 | 120 | 60 | 1 | Direct | | | | | | | |
| 3 | 24 | | | | | | | | | | |

ITEM 17 - SINK, HAND (4 REQ'D)

UNITED RESTAURANT EQUIPMENT CO. Model HANDSINK - SPLASHES

HAND SINK 17"X15" W/ TWO SIDE SPLASHES SS 10"X14" BOWL



ITEM 17.1 - WALL / SPLASH MOUNT FAUCET (4 REQ'D)

T&S Brass Model B-1146

Workboard Faucet, wall mount, 4" centers, 5-3/4" swivel gooseneck nozzle (includes lock washer to convert to rigid), 2.2 GPM aerator, quarter-turn Eterna cartridges with spring checks, lever handles with color coded indexes, 1/2" NPT male inlets, ADA Compliant



WATER

| | HOT SIZE | HOT AFF | HOT GPH | COLD SIZE | COLD AFF | FILTERED SIZE | FILTERED AFF | CONDENSER INLET SIZE | CONDENSER OUTLET SIZE |
|---|----------|---------|---------|-----------|----------|---------------|--------------|----------------------|-----------------------|
| 1 | 1/2" | | | 1/2" | | | | | |

WASTE

| | INDIRECT SIZE | DIRECT SIZE |
|---|---------------|-------------|
| 1 | | |

ITEM 18 - SINK, (3) THREE COMPARTMENT (1 REQ'D)

Atosa USA, Inc. Model MRSC-3-D

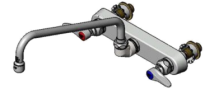
Sink, (3) 18"W x 24" front to back x 14" deep compartments, (2) 24" drainboards, 10"H boxed backsplash with 2" return to wall at 45 & 1" turned down rear lip, corners coved at 3/4" radius, bottom of bowls drain to 3-1/2" dia. die stamped opening, (1) set of faucet holes, 16/300 stainless steel, 1-5/8" OD stainless steel legs with 1-1/4" OD adjustable side bracing, stainless steel gussets, adjustable stainless steel bullet feet, NSF Overall 102"X30"



ITEM 18.1 - WALL / SPLASH MOUNT FAUCET (1 REQ'D)

T&S Brass Model B-1128-XS

Workboard Faucet, wall mount, 8" centers, 12" swing spout, with extra long shank, quarter-turn Eterna cartridges, low lead, ADA Compliant



WATER

| | HOT SIZE | HOT AFF | HOT GPH | COLD SIZE | COLD AFF | FILTERED SIZE | FILTERED AFF | CONDENSER INLET SIZE | CONDENSER OUTLET SIZE |
|---|----------|---------|---------|-----------|----------|---------------|--------------|----------------------|-----------------------|
| 1 | 1/2" | | | 1/2" | | | | | |

WASTE

| | INDIRECT SIZE | DIRECT SIZE |
|---|---------------|-------------|
| 1 | | |

ITEM 18.2 - DRAIN, LEVER / TWIST WASTE (3 REQ'D)

T&S Brass Model B-3950

Waste Valve, twist handle, 3-1/2" sink opening, 2" drain outlet with 1-1/2" adapter (replaces B-3912, B-3916)



WATER

| | HOT SIZE | HOT AFF | HOT GPH | COLD SIZE | COLD AFF | FILTERED SIZE | FILTERED AFF | CONDENSER INLET SIZE | CONDENSER OUTLET SIZE |
|---|----------|---------|---------|-----------|----------|---------------|--------------|----------------------|-----------------------|
| 1 | | | | | | | | | |

WASTE

| | INDIRECT SIZE | DIRECT SIZE |
|---|---------------|-------------|
| 1 | 1-1/2" to 2" | |

PLUMBING 1 REMARKS

2" NPT Male Thread, 1-1/2 NPT Female Thread Outlet

ITEM 19 - OVERSHELF (1 REQ'D)

Advance Tabco Model PS-15-96 Dimensions: 15(h) x 96(w) x 15(d)

Shelf with Pot Rack, wall-mounted, 96"W x 15"D, 18/430 stainless steel shelf, 2" x 1/4" stainless steel pot rack, includes: (9) plated double pot hooks (units 96" & longer have (3) support brackets), NSF



ITEM 20/21 - DISHTABLE, SOILED "L" SHAPED (1 REQ'D)

Advance Tabco Model DTS-G70-60R Dimensions: 44(h)

Island-Soil Dishtable, L-shaped, attaches to right of dish machine operator, 10-1/2"H backsplash one side, with pre-rinse sink, stainless steel legs, with crossrails, 59" long, 16/304 stainless steel

- 1 ea SPECIFY DISH MACHINE BRAND & MODEL to ensure proper fit, refer to attached document (AQ only) or consult www.advancetabco.com for compatibility listing. Certain dish machines require modifications at additional cost not shown here
- 1 ft Model DTA-79S Double Sided Slant Solid Base Rack Sorting Shelf, table mounted (sold per linear foot) (minimum 4 ft), (NOTE: Due to angle of racks, they will NOT fit back to back)



WATER

| | HOT SIZE | HOT AFF | HOT GPH | COLD SIZE | COLD AFF | FILTERED SIZE | FILTERED AFF | CONDENSER INLET SIZE | CONDENSER OUTLET SIZE |
|---|----------|---------|---------|-----------|----------|---------------|--------------|----------------------|-----------------------|
| 1 | | | | | | | | | |

WASTE

| | INDIRECT SIZE | DIRECT SIZE |
|---|---------------|-------------|
| 1 | 1-1/2" | |

ITEM 20.1 - PRE-RINSE FAUCET ASSEMBLY (1 REQ'D)

T&S Brass Model B-0113

EasyInstall Pre-Rinse Unit, spring action gooseneck, single hole deck mount mixing faucet, 45"H, 14" overhang, 19-3/8" clearance, 24" riser, spray valve (B-0107), 44" flexible stainless steel hose, quarter-turn Eterna cartridges, 18" flexible stainless steel supply lines with comp. fittings for 5/8" OD copper tubing, low lead, 2019 DOE PRSV - Class II

1 ea Model B-0109-01 Wall Bracket, 6"



WATER

| | HOT SIZE | HOT AFF | HOT GPH | COLD SIZE | COLD AFF | FILTERED SIZE | FILTERED AFF | CONDENSER INLET SIZE | CONDENSER OUTLET SIZE |
|---|----------|---------|---------|-----------|----------|---------------|--------------|----------------------|-----------------------|
| 1 | 1/2" | | | 1/2" | | | | | |

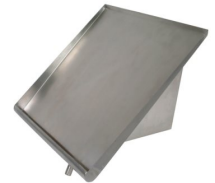
WASTE

| | INDIRECT SIZE | DIRECT SIZE |
|---|---------------|-------------|
| 1 | | |

ITEM 22 - DISHTABLE SORTING SHELF (1 REQ'D)

BK Resources Model BK-SSH-42 Dimensions: 13.38(h) x 42(w) x 22(d)

Slant Rack Shelf, wall mount, 42"W, rolled front edge, weep accepts 1" nylon tubing (nylon tubing sold separately), includes mounting brackets, 18/304 stainless steel construction NSF



WATER

| | HOT SIZE | HOT AFF | HOT GPH | COLD SIZE | COLD AFF | FILTERED SIZE | FILTERED AFF | CONDENSER INLET SIZE | CONDENSER OUTLET SIZE |
|---|----------|---------|---------|-----------|----------|---------------|--------------|----------------------|-----------------------|
| 1 | | | | | | | | | |

WASTE

| | INDIRECT SIZE | DIRECT SIZE |
|---|---------------|-------------|
| 1 | 1" | |

ITEM 23 - CLEAN DISHTABLE (1 REQ'D)

Advance Tabco Model DTC-S70-48L Dimensions: 44(h) x 47(w) x 30(d)

Dishtable, clean, straight design, attaches to left of dish machine operator, 10-1/2"H backsplash, 3" rolled front & side rims, stainless steel legs, with crossrails, 47"W x 30"D x 34"H, 16/304 stainless steel

1 ea SPECIFY DISH MACHINE BRAND & MODEL to ensure proper fit, refer to attached document (AQ only) or consult www.advancetabco.com for compatibility listing. Certain dish machines require modifications at additional cost not shown here



ITEM 25 - WORK TABLE, STAINLESS STEEL TOP (1 REQ'D)

Atosa USA, Inc. Model SSTW-3036 Dimensions: 34(h) x 36(w) x 30(d)

MixRite Work Table, 36"W x 30"D x 34"H, 18/430 stainless steel top with turned down edges, 18/430 stainless steel adjustable undershelf & legs, adjustable bullet feet, NSF, KD



ITEM 26 - WORK TABLE, STAINLESS STEEL TOP (2 REQ'D)

Advance Tabco Model KMS-304 Dimensions: 40.5(h) x 48(w) x 30(d)

Work Table, 48"W x 30"D, 16 gauge 304 stainless steel top with 5"H backsplash, 18 gauge stainless steel adjustable undershelf, stainless steel legs & adjustable bullet feet, NSF

- 2 ea Weld-In sink - single bowl
- 2 ea Model TA-11N Sink Welded Into Table Top, 18"W x 18"D x 14" deep bowl, includes faucet, NSF (must specify sink location)
- 1 - sink bowl on right

- 1- sink bowl on left



WATER

| | HOT SIZE | HOT AFF | HOT GPH | COLD SIZE | COLD AFF | FILTERED SIZE | FILTERED AFF | CONDENSER INLET SIZE | CONDENSER OUTLET SIZE |
|---|----------|---------|---------|-----------|----------|---------------|--------------|----------------------|-----------------------|
| 1 | | | | | | | | | |

WASTE

| | INDIRECT SIZE | DIRECT SIZE |
|---|---------------|-------------|
| 1 | 1-1/2" | |

ITEM 27 - WORK TABLE, STAINLESS STEEL TOP (1 REQ'D)

Advance Tabco Model KMS-305 Dimensions: 40.5(h) x 60(w) x 30(d)

Work Table, 60"W x 30"D, 16 gauge 304 stainless steel top with 5"H backsplash, 18 gauge stainless steel adjustable undershelf, stainless steel legs & adjustable bullet feet, NSF

- 1 ea Weld-In sink - single bowl
- 1 ea Model TA-11N Sink Welded Into Table Top, 18"W x 18"D x 14" deep bowl, includes faucet, NSF (must specify sink location)
- sink bowl on left of table.



WATER

| | HOT SIZE | HOT AFF | HOT GPH | COLD SIZE | COLD AFF | FILTERED SIZE | FILTERED AFF | CONDENSER INLET SIZE | CONDENSER OUTLET SIZE |
|---|----------|---------|---------|-----------|----------|---------------|--------------|----------------------|-----------------------|
| 1 | | | | | | | | | |

WASTE

| | INDIRECT SIZE | DIRECT SIZE |
|---|---------------|-------------|
| 1 | 1-1/2" | |

ITEM 28 - SHELVING, WALL MOUNTED (1 REQ'D)

Advance Tabco Model WS-12-72-16 Dimensions: 10.5(h) x 72(w) x 12(d)

Shelf, wall-mounted, 72"W x 12"D, 1-5/8" bullnose front edge, 1-1/2"H rear up-turn, 16/304 satin finish stainless steel, NSF



ITEM 29 - WORK TABLE, STAINLESS STEEL TOP (1 REQ'D)

Advance Tabco Model KSS-3011 Dimensions: 40.5(h) x 132(w) x 30(d)

Work Table, 132"W x 30"D, 14 gauge 304 stainless steel top with 5"H backsplash, 18 gauge stainless steel adjustable undershelf, stainless steel legs with stainless steel bullet feet, NSF

- 1 ea <Optional> Model TA-45 Glass Rack Slides, mounted under table top, (3) slides spaced 7-1/2" apart, for minimum table length of 36", aluminum, KD



ITEM 30 - SHELVING, WALL MOUNTED (1 REQ'D)

Advance Tabco Model WS-12-36-16 Dimensions: 10.5(h) x 36(w) x 12(d)

Shelf, wall-mounted, 36"W x 12"D, 1-5/8" bullnose front edge, 1-1/2"H rear up-turn, 16/304 satin finish stainless steel, NSF



ITEM 31 - SHELVING, WALL MOUNTED (2 REQ'D)**Advance Tabco Model WS-12-48-16 Dimensions: 10.5(h) x 48(w) x 12(d)**

Shelf, wall-mounted, 48"W x 12"D, 1-5/8" bullnose front edge, 1-1/2"H rear up-turn, 16/304 satin finish stainless steel, NSF

**ITEM 32 - SHELVING, WALL MOUNTED (1 REQ'D)****Advance Tabco Model WS-12-60-16 Dimensions: 10.5(h) x 60(w) x 12(d)**

Shelf, wall-mounted, 60"W x 12"D, 1-5/8" bullnose front edge, 1-1/2"H rear up-turn, 16/304 satin finish stainless steel, NSF

**ITEM 33 - FIESTA MEXICANA - COATS (1 REQ'D)****Bally Refrigerated Boxes Model 27626-001-R01-LC**

Indoor Structure NSF APPROVED

Bally Prefabricated Exterior Dimensions:

15'-5"(l) x 8'-8½"(w) x 8'-6"(h)

With Floor / Less Floor 4" Floor

4 in. Exterior Vertical Used (7'-10") with 4 in. Partition, 4 in. Floor, 4 in. Ceiling

Panel Thickness:

Ceiling: Single Span

2 Compartments 1 Tiers

1 ea Model SPECS Indoor Structure NSF APPROVED

Bally Prefabricated Exterior Dimensions:

15'-5"(l) x 8'-8½"(w) x 8'-6"(h)

With Floor / Less Floor 4" Floor

4 in. Exterior Vertical Used (7'-10") with 4 in. Partition, 4 in. Floor, 4 in. Ceiling

Panel Thickness:

Ceiling: Single Span

2 Compartments 1 Tiers

Details and specifications for Quote No: 27626-001-R01-LC

Base Finish Vertical and Ceiling Panels: Embossed Galvalume (26 GA)

Special Finishes:

Interior Floor - Aluminum Smooth (10 GA .100" Thick)

Doors/Openings:

Wall 3 Door 1 (1) 36" x 78" Hinged Door In a 46"

Wall 3 Door 1 (1) Door(s) Cut For Quarry Tile (Each)

Wall 3 Door 1 (1) Extended length Screed Door (4" screeds)

Fiesta Mexicana - Coats

Wall 3 Door 1 (1) Super Door 36" Wide and Under, 30" High

Partition 1 Door 1 (1) 36" x 78" Hinged Door In a 46"

Partition 1 Door 1 (1) Bally Standard Pressure Relief Port (< 400 sq/ft)

Partition 1 Door 1 (1) Super Door 36" Wide and Under, 30" High

Accessories and Extras:

(2) 48" LED KEIL 48x754-CL-N Light

- 40° F to 100° F(Range)

Refrigeration:

(1) BEZA 008 H8 HT3DB (208-230/3/60) w/ smart speed

Scroll Unit 8800 BTU

(1) BEZA 015 L8 HT3DB (208-230/3/60) w/ smart speed

For use with SMARTVAP+

(1) BLP105LE-S2D SV+ 208-230/1/60

SmartVap+ Electric Defrost with EEV Installed

(1) BLP209MA-S1D-SV+ 115/1/60

SmartVap+ Air Defrost with EEV Installed

(1) Refrigeration is calculated for standard use at a box temperature of

35° F. for the cooler and -10° F. for the freezer with a condensing

unit ambient of 100° F.

(1) THE REFRIGERATION IS CALCULATED FOR A LINE RUN

OF LESS THAN 50'

1 ea Model WARRANTY (1) 00 3/4 HP System (5 yr. Parts , 1 yr. Labor)

(1) 01 1/2 HP System (5 yr. Parts , 1 yr. Labor)

1 ea <Optional> Model OPTIONAL ACCESSORIES: NOT INCLUDED IN QUOTE:

(91) S/F EMBOSSED GALVALUME(CLOSURE METAL)

(1) INTERIOR STAINLESS STEEL RAMP

ITEM 34 - PLASTIC SHELVING (4 REQ'D)

Metro Model MX2442G Dimensions: 42(w) x 24(d)

Quick Ship - MetroMax® i Shelf, 42"W x 24"D, reinforced type 304 stainless steel corners, removable open grid polymer mats, (4) wedge connectors, built in Microban® antimicrobial product protection, 1000 lb. capacity per shelf, NSF



4 ea Model MX74P Quick Ship - Polymer trilobal post (compatible with MetroMax® i, MetroMax® 4, MetroMax® Q), 74-3/16"H, for stationary use or with a dolly, adjustable leveling foot, grooved on 1" increments, corrosion proof all polymer construction with built in Microban® antimicrobial product protection

ITEM 34 - PLASTIC SHELVING (4 REQ'D)**Metro Model MX2448G Dimensions: 48(w) x 24(d)**

Quick Ship - MetroMax® i Shelf, 48"W x 24"D, reinforced type 304 stainless steel corners, removable open grid polymer mats, (4) wedge connectors, built in Microban® antimicrobial product protection, 1000 lb. capacity per shelf, NSF

- 4 ea Model MX74P Quick Ship - Polymer trilobal post (compatible with MetroMax® i, MetroMax® 4, MetroMax® Q), 74-3/16"H, for stationary use or with a dolly, adjustable leveling foot, grooved on 1" increments, corrosion proof all polymer construction with built in Microban® antimicrobial product protection

**ITEM 34 - PLASTIC SHELVING (8 REQ'D)****Metro Model MX2460G Dimensions: 60(w) x 24(d)**

Quick Ship - MetroMax® i Shelf, 60"W x 24"D, reinforced type 304 stainless steel corners, removable open grid polymer mats, (4) wedge connectors, built in Microban® antimicrobial product protection, 750 lb. capacity per shelf, NSF

- 8 ea Model MX74P Quick Ship - Polymer trilobal post (compatible with MetroMax® i, MetroMax® 4, MetroMax® Q), 74-3/16"H, for stationary use or with a dolly, adjustable leveling foot, grooved on 1" increments, corrosion proof all polymer construction with built in Microban® antimicrobial product protection

**ITEM 35 - PLASTIC SHELVING (4 REQ'D)****Metro Model MX1842G Dimensions: 42(w) x 18(d)**

Quick Ship - MetroMax® i Shelf, 42"W x 18"D, reinforced type 304 stainless steel corners, removable open grid polymer mats, (4) wedge connectors, built in Microban® antimicrobial product protection, 1000 lb. capacity per shelf, NSF

- 4 ea Model MX74P Quick Ship - Polymer trilobal post (compatible with MetroMax® i, MetroMax® 4, MetroMax® Q), 74-3/16"H, for stationary use or with a dolly, adjustable leveling foot, grooved on 1" increments, corrosion proof all polymer construction with built in Microban® antimicrobial product protection

**ITEM 35 - PLASTIC SHELVING (8 REQ'D)****Metro Model MX2460G Dimensions: 60(w) x 24(d)**

Quick Ship - MetroMax® i Shelf, 60"W x 24"D, reinforced type 304 stainless steel corners, removable open grid polymer mats, (4) wedge connectors, built in Microban® antimicrobial product protection, 750 lb. capacity per shelf, NSF

- 8 ea Model MX74P Quick Ship - Polymer trilobal post (compatible with MetroMax® i, MetroMax® 4, MetroMax® Q), 74-3/16"H, for stationary use or with a dolly, adjustable leveling foot, grooved on 1" increments, corrosion proof all polymer construction with built in Microban® antimicrobial product protection

**ITEM 36 - PLASTIC SHELVING (12 REQ'D)****Metro Model MX2448G Dimensions: 48(w) x 24(d)**

Quick Ship - MetroMax® i Shelf, 48"W x 24"D, reinforced type 304 stainless steel corners, removable open grid polymer mats, (4) wedge connectors, built in Microban® antimicrobial product protection, 1000 lb. capacity per shelf, NSF

- 12 ea Model MX74P Quick Ship - Polymer trilobal post (compatible with MetroMax® i, MetroMax® 4, MetroMax® Q), 74-3/16"H, for stationary use or with a dolly, adjustable leveling foot, grooved on 1" increments, corrosion proof all polymer construction with built in Microban® antimicrobial product protection



ITEM 36 - PLASTIC SHELVING (8 REQ'D)**Metro Model MX2460G Dimensions: 60(w) x 24(d)**

Quick Ship - MetroMax® i Shelf, 60"W x 24"D, reinforced type 304 stainless steel corners, removable open grid polymer mats, (4) wedge connectors, built in Microban® antimicrobial product protection, 750 lb. capacity per shelf, NSF

- 8 ea Model MX74P Quick Ship - Polymer trilobal post (compatible with MetroMax® i, MetroMax® 4, MetroMax® Q), 74-3/16"H, for stationary use or with a dolly, adjustable leveling foot, grooved on 1" increments, corrosion proof all polymer construction with built in Microban® antimicrobial product protection

**ITEM 37 - PLASTIC SHELVING (8 REQ'D)****Metro Model MX2448G Dimensions: 48(w) x 24(d)**

Quick Ship - MetroMax® i Shelf, 48"W x 24"D, reinforced type 304 stainless steel corners, removable open grid polymer mats, (4) wedge connectors, built in Microban® antimicrobial product protection, 1000 lb. capacity per shelf, NSF

- 8 ea Model MX74P Quick Ship - Polymer trilobal post (compatible with MetroMax® i, MetroMax® 4, MetroMax® Q), 74-3/16"H, for stationary use or with a dolly, adjustable leveling foot, grooved on 1" increments, corrosion proof all polymer construction with built in Microban® antimicrobial product protection

**ITEM 38 - SPARE NO.****ITEM 39 - PLASTIC SHELVING (4 REQ'D)****Metro Model MX2460G Dimensions: 60(w) x 24(d)**

Quick Ship - MetroMax® i Shelf, 60"W x 24"D, reinforced type 304 stainless steel corners, removable open grid polymer mats, (4) wedge connectors, built in Microban® antimicrobial product protection, 750 lb. capacity per shelf, NSF

- 4 ea Model MX74P Quick Ship - Polymer trilobal post (compatible with MetroMax® i, MetroMax® 4, MetroMax® Q), 74-3/16"H, for stationary use or with a dolly, adjustable leveling foot, grooved on 1" increments, corrosion proof all polymer construction with built in Microban® antimicrobial product protection

**ITEM 40 - CAN RACK (1 REQ'D)****Channel Manufacturing Model CSBR-80 Dimensions: 76(h) x 25.5(w) x 35(d)**

Can Rack, Can And Storage Rack, Stationary, 25.5"W x 35"D x 76"H, Aluminum Construction, (80) #10 Cans, Stationary, Made in USA, NSF, 75lbs. (ITEM WEIGHT ONLY), weight does not include 50 lbs. for pallet weight

- 1 ea Lifetime warranty against rust and corrosion

**ITEM 41 - DISH CABINET (2 REQ'D)****Advance Tabco Model EDC-1572-X Dimensions: 35.5(h) x 72(w) x 15(d)**

Special Value Dish Cabinet, 72"W x 15"D x 35-1/2"H, 18 gauge stainless steel top & body, open base with mid-shelf, stainless steel gusset, legs & feet, NSF



ITEM 42 - PASS-THRU SHELF (1 REQ'D)**John Boos Model PTS26K-18132 Dimensions: 132(w) x 18(d)**

Pass-Thru Shelf, 132"W x 18"D, double, 10" maximum wall thickness, Stallion Safety Edge front and back, includes wall mount brackets, 16/300 stainless steel construction

4 pr Model OSHLB-15 Heat Lamp Bracket, 15" wide, comes as a pair, fits with Hatco warming lamps & JBC overshelves

ITEM 43 - BY OTHERS (1 REQ'D)**Custom Model BEVERAGE DISPENSER****ITEM 73 - BY OTHERS (1 REQ'D)****Custom Model TEA DISPENSER****ITEM 74 - BY OTHERS (1 REQ'D)****Custom Model COFFEE BREWER****ITEM 46 - BY OTHERS (1 REQ'D)****Custom Model DRIVE THRU WINDOW****ITEM 47/48 - DRAFT BEER COOLER (1 REQ'D)****Beverage Air Model DD78HC-1-B-144 Dimensions: 52.5(h) x 79(w) x 29(d)**

Draft Beer Cooler, 79"W, 29"D, 33.59 cu. ft., (3) doors, (4) keg capacity, door locks, this has 2-4 tap towers, DRCT DRW 78 BLK/ZG R290, HNG-SLD DR,(2)4TAP DRFT,(2)4WAY MAN, black exterior, stainless steel top, galvanized interior with reinforced stainless steel floor, self-contained refrigeration, R290 Hydrocarbon refrigerant, 1/3 HP, cULus, UL EPH Classified, UL-Sanititation, Made in USA

- 1 ea 3 years parts & labor warranty (excludes maintenance items)
- 1 ea Self-Contained refrigeration
- 1 ea 7 years compressor warranty (part only), standard
- 1 ea 115v/60/1-ph, 5.5 amps, cord with NEMA 5-15P
- 1 ea Compressor located on left, standard
- 1 ea Solid hinged black doors, standard



ELECTRICAL

| | VOLTS | CYCLE | PHASE | CONN | AFF | NEMA | AMPS | KW | HP | MCA | MOCP |
|---|-------|-------|-------|-------------|-----|-------|------|----|-----|-----|------|
| 1 | | | | | | | | | 1/3 | | |
| 2 | 115 | 60 | 1 | Cord & Plug | | 5-15P | 5.5 | | | | |

ITEM 49 - BACK BAR CABINET, REFRIGERATED (1 REQ'D)**Beverage Air Model BB78HC-1-FG-B Dimensions: 37.25(h) x 79(w) x 29.13(d)**

Refrigerated Food Rated Back Bar Storage Cabinet, three-section, 79"W, 37-1/4" H, 33.59 cu. ft., (3) glass doors, snap-in door gasket, (6) epoxy coated steel shelves, (4) 1/2 barrel kegs, LED interior lighting with manual on/off switch, black exterior finish, 2" stainless steel top, stainless steel interior with radius corners is easy to keep clean & meets NSF Standard 7 for open container, left-mounted self-contained refrigeration, R290 Hydrocarbon refrigerant, 1/3 HP, cULus, UL EPH Classified, UL-Sanitation, MADE IN USA

- 1 ea 3 years parts & labor warranty (excludes maintenance items)
- 1 ea Self-Contained refrigeration
- 1 ea 7 years compressor warranty (part only), standard
- 1 ea 115v/60/1-ph, 5.5 amps, cord with NEMA 5-15P
- 1 ea Compressor located on left, standard
- 1 ea 1-1/2" Stainless steel top, standard



ELECTRICAL

| | VOLTS | CYCLE | PHASE | CONN | AFF | NEMA | AMPS | KW | HP | MCA | MOCP |
|---|-------|-------|-------|-------------|-----|-------|------|----|-----|-----|------|
| 1 | | | | | | | | | 1/3 | | |
| 2 | 115 | 60 | 1 | Cord & Plug | | 5-15P | 5.5 | | | | |

ITEM 51 - WORK TABLE, STAINLESS STEEL TOP (1 REQ'D)**Atosa USA, Inc. Model SSTW-3048 Dimensions: 34(h) x 48(w) x 30(d)**

MixRite Work Table, 48"W x 30"D x 34"H, 18/430 stainless steel top with turned down edges, 18/430 stainless steel adjustable undershelf & legs, adjustable bullet feet, NSF, KD

**ITEM 52 - UNDERBAR SINK UNITS (2 REQ'D)****Glastender, Inc. Model FS12 Dimensions: 37(h) x 12(w) x 24(d)**

Underbar Hand & Wet Waste Sink, 12"W x 24"D, (2) 9-1/4" wide x 11-1/2" front-to-back x 6" deep bowls, upper hand sink & lower wet waste sink, back & side splashes, 4" OC splash mount faucet (low lead compliant), lift-out plastic perforated sink strainer, includes soap dispenser, front-flush C-fold paper towel dispenser, stainless steel construction, legs with adjustable bullet feet, ETL-Sanitation

- 2 ea 1 year parts & labor warranty
- 2 ea 7" High Backsplash, standard
- 2 ea WARNING: The plastic wet waste strainer included with this product can expose you to chemicals including Bisphenol A (BPA), which is known to the State of California to cause birth defects or other reproductive harm. For more information, go to www.P65Warnings.ca.gov. Warning applies to State of California only Part#03000483
- 2 ea Faucet, backsplash mounted, 4"OC, 3/8" hot & cold water connections required, standard
- 2 ea Aerator, faucet, 2.0 GPM, standard



WATER

| | HOT SIZE | HOT AFF | HOT GPH | COLD SIZE | COLD AFF | FILTERED SIZE | FILTERED AFF | CONDENSER INLET SIZE | CONDENSER OUTLET SIZE |
|---|----------|---------|---------|-----------|----------|---------------|--------------|----------------------|-----------------------|
| 1 | | | | | | | | | |
| 2 | 3/8" | | | 3/8" | | | | | |

WASTE

| | INDIRECT SIZE | DIRECT SIZE |
|---|---------------|-------------|
| 1 | 1-1/2" | |
| 2 | | |

PLUMBING 1 REMARKS

Upper hand sink drains into lower wet waste sink. Only the lower wet waste sink drain is plumbed.

PLUMBING 2 REMARKS

Sink faucet

ITEM 53 - WORK TABLE, STAINLESS STEEL TOP (1 REQ'D)

Advance Tabco Model KLAG-306-X Dimensions: 40.5(h) x 72(w) x 30(d)

Special Value Work Table, 72"W x 30"D, 16 gauge 430 stainless steel top with 5"H backsplash, 18 gauge galvanized adjustable undershelf, galvanized legs with adjustable plastic bullet feet, NSF



ITEM 53.1 - CASTERS <OPTIONAL> (1 st REQ'D)

Krowne Model 30-129S

Krowne Economy Series 1-5/8" Stem Work Table Caster, 5" diameter, swivel, (2) with brake, 200 lbs per caster load capacity (set of 4)



ITEM 54 - WORKTOP FREEZER (1 REQ'D)

True Mfg. - General Foodservice Model TWT-48F-HC Dimensions: 33.38(h) x 48.38(w) x 30.13(d)

Work Top Freezer, two-section, -10°F, rear mounted self-contained refrigeration, stainless steel top with splash, (2) solid stainless steel doors, (4) PVC coated adjustable wire shelves, stainless steel front & sides, with aluminum finished back, aluminum interior with stainless steel floor, R290 Hydrocarbon refrigerant, 1/2 HP, 115v/60/1-ph, 3.2 amps, NEMA 5-15P, cULus, UL EPH Classified, Made in USA, ENERGY STAR®



- 1 ea Self-contained refrigeration standard
- 1 ea 7 year compressor warranty, 6 years parts warranty, 5 year labor warranty standard. Please visit www.truemfg.com for specifics standard
- 1 ea Bolt locks, factory installed, standard
- 1 ea Castors, 5" (36" work surface height) standard

ELECTRICAL

| | VOLTS | CYCLE | PHASE | CONN | AFF | NEMA | AMPS | KW | HP | MCA | MOCP |
|---|-------|-------|-------|-------------|-----|-------|------|----|-----|-----|------|
| 1 | 115 | 60 | 1 | Cord & Plug | | 5-15P | 3.2 | | 1/2 | | |

ITEM 55 - BY OTHERS (1 REQ'D)

Custom Model HOT WATER HEATER

ITEM 56 - BY OTHERS (1 REQ'D)

Custom Model CAN WASH

ITEM 57 - TAX (16 REQ'D)

WHITE GOODS TAX Model WHITE GOODS TAX

According to NCGA General Statutes - chapter 105 Article 5C "White Goods" includes refrigerators, ranges, water heaters, freezers, unit air conditioners, washing machines, dishwashers, clothes dryers, and other similar domestic and commercial large appliances. Defined in G.S. 130A-290 (a) (44) TAX LAW IMPOSED - 1993 Additional Information: www.ncga.state.nc.us search on "White Goods" 2010 booklet - "White Goods" sold and those purchased for storage, use, or consumption within NORTH CAROLINA only

ITEM 58 - D&I (1 REQ'D)

UNITED RESTAURANT EQUIPMENT CO. Model DELIVERY & INSTALL

Receive, Inspect , consolidate in our warehouse. Deliver to site as required , uncrate, set in place per FS-1 drawing.

ITEM 72 - POWER DRIVE UNIT (1 REQ'D)

Univex Model PM91G Dimensions: 16(h) x 22(w) x 33(d)

Prep-Mate™ Power Drive Unit, heavy duty, table model, 250-RPM drive, enamel finish, 1 hp drive motor with 1" wide Poly-V belt system, with 5" deep prep container & cover, unit will accept VS9H, VS9 or MFC12 attachments, extended legs, 115v/60/1-ph, 9 amps, NEMA 5-15P, cETLus, ETL-Sanitation, NSF



- 1 ea One-year, on-site parts & labor warranty, see model "WARRANTY SHEET" for details
- 1 ea Metallic silver
- 1 ea Model ALMFC12 Meat & Food Grinder Attachment, fits #12 hub, aluminum, complete with cylinder, ring, worm, stainless steel pan, plunger, 3/16" plate and #12 knife, NSF
- 1 ea Model VS9 Vegetable Slicer Attachment, 9", with adjustable "S" knife assembly, satin finish anodized aluminum housing with hinged

feed chute door, latch, and feed pusher, NSF

ELECTRICAL

| | VOLTS | CYCLE | PHASE | CONN | AFF | NEMA | AMPS | KW | HP | MCA | MOCP |
|---|-------|-------|-------|-------------|-----|-------|------|----|----|-----|------|
| 1 | 115 | 60 | 1 | Cord & Plug | | 5-15P | 9 | | 1 | | |