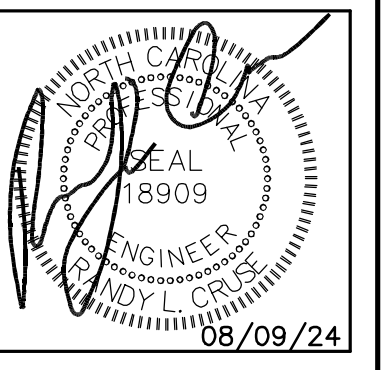


EQUIPMENT PLAN
SCALE: 3/16" = 1'-0"

EQUIPMENT SCHEDULE

ITEM	QUAN	DESCRIPTION	REMARKS
1	1	16'-0"x 54" EXHAUST HOOD SYSTEM	Fire Suppression
2	1	48" Counter-Top GRIDDLE	
3	2	FRYER	
4	1	6-Burner RANGE w/Oven	
5	1	CONVECTION OVEN	
6	2	UPRIGHT STEAMER	
7	1	2-Drawer FOOD WARMER	
8	1	FRESH-D-MATIC	
9	1	30" Dual HEAT LAMP	
10	1	66" Dual HEAT LAMP	
11	1	36" FLY FAN w/Micro-Switch	
12	1	ICE MACHINE w/Storage Bin	
13	1	Under-Counter FREEZER	
14	1	2-Door FREEZER	
15	1	2-Door FREEZER	
16	1	48" SANDWICH UNIT (12-Pan)	
17	1	7'-9"x 7'-9" WALK-IN COOLER	
18	5	Walk-In Cooler SHELVING UNIT	
19	3	Dry Storage SHELVING UNIT	
20	2	S/S HAND SINK w/Side Splashes	
21	1	48" S/S EQUIPMENT STAND w/Casters	
22	1	30"x 48" S/S PREP TABLE w/Sink	18"x 18" Bowl
23	1	30"x 36" S/S WORK TABLE	
24	1	30"x 72" S/S WORK TABLE	
25	1	12"x 48" S/S WALL SHELF	
26	1	18"x 36" S/S Double OVERSHELF	
27	1	18"x 48" S/S Double OVERSHELF	
28	1	18"x 72" S/S Double OVERSHELF	
29	1	3-Compartment SINK w/2-24" DB's	18"x 24" Bowls
30	1	12"x 96" S/S WALL SHELF w/Pot Rack	
31	1	66"x 48" S/S Soiled DISH TABLE w/Pre-Rinse	
32	1	48" Double-Sided RACK SHELF	
33	1	66" S/S Clean DISH TABLE	
34	1	42" S/S Slanted RACK SHELF	
35	1	Ventless DOOR-TYPE DISH MACHINE-note 1	BY: Others
36	1	36"x 9'-0" S/S BEVERAGE STATION w/Hand Sink	
37	1	Portable CARVING STATION	
38	1	60" Solid-Top UNIT	
39	1	74" Solid-Top UNIT	
40	1	HOT FOOD BUFFET w/6-Hot Wells	
41	2	4-Well HOT FOOD UNIT	
42	2	96" COLD FOOD UNIT	
43	1	96" COLD FOOD UNIT	SALAD BAR
44	1	74" Half BUFFET SHIELD	
45	2	60" BUFFET SHIELD	
46	3	96" BUFFET SHIELD	
47	1	BEVERAGE/ICE DISPENSER	BY: Others
48	1	TEA BREWER	BY: Others
49	1	TEA DISPENSER	BY: Others
50	1	COFFEE BREWER	BY: Others
51	1	BAG-N-BOX (Under Item #36)	BY: Others
52	4	199,000 BTUS GAS WATER HEATERS	BY: Others
53	1	CAN WASH	BY: Others
54	1	S.S. HANDSINK	BY: Others
55	1	139" BUFFET SHIELD	
56	1	AIR DRYING & UTENSIL STORAGE RACK	
57	1	24' X 48' PREP TABLE	BY: Others
58	1	UNDERCOUNTER CHEF BASE REFRIGERATOR	BY: Others
59	1	LOCKERS	

NOTE 1: CHAMPION DH-6000 WITH 7.5 KW BOOSTER HEATER

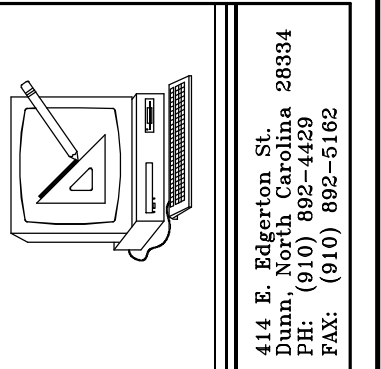


PLANS FOR:
MAMA B'S
SOUTHERN KITCHEN
COATS, NORTH CAROLINA

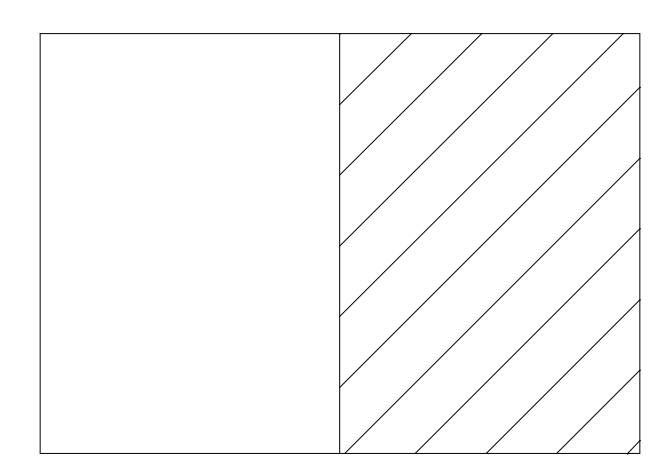
REVISIONS	
NO.	DESCRIPTION
1.	09-20-24

REVISION 1:

- REPLACE TANK TYPE WATER HEATER WITH TANKLESS WATER HEATERS.
- ADDED ANOTHER #6 FOR ADDITIONAL HOT HOLDING FOR BULK STORAGE.
- ADDED #57 FOR ADDITIONAL PREP/BAKING AREA.
- ADDED #58 FOR ADDITIONAL REFRIGERATION.
- ADDED #56 FOR ADDITIONAL AIR-DRYING AND UTENSIL STORAGE.
- EXPANDED #19 FOR ADDITIONAL DRY GOOD STORAGE.



Cruse and Associates, P.A.
 414 E. Robertson St.
 Durham, North Carolina 27604
 TEL: (919) 882-5182
 FAX: (919) 882-5182
 LICENSE NO.: C-1721



KEY PLAN

THESE DOCUMENTS ARE INSTRUMENTS OF SERVICE AND AS SUCH THESE DRAWINGS, DESIGNS, AND DESIGN CONCEPTS PRESENTED REMAIN THE PROPERTY OF THE ENGINEER. PUBLISH OR DUPLICATE THE DRAWINGS OR DESIGNS ONLY WITH THE WRITTEN PERMISSION OF THE ENGINEER.
 © COPY RIGHT

DATE 08-09-24
 DRAWN BY BAM
 JOB NO. 24-16

SHEET NO.
F-2 OF 3