

LIGHTING EXISTING PLAN
SCALE: 1/8" = 1 FT.

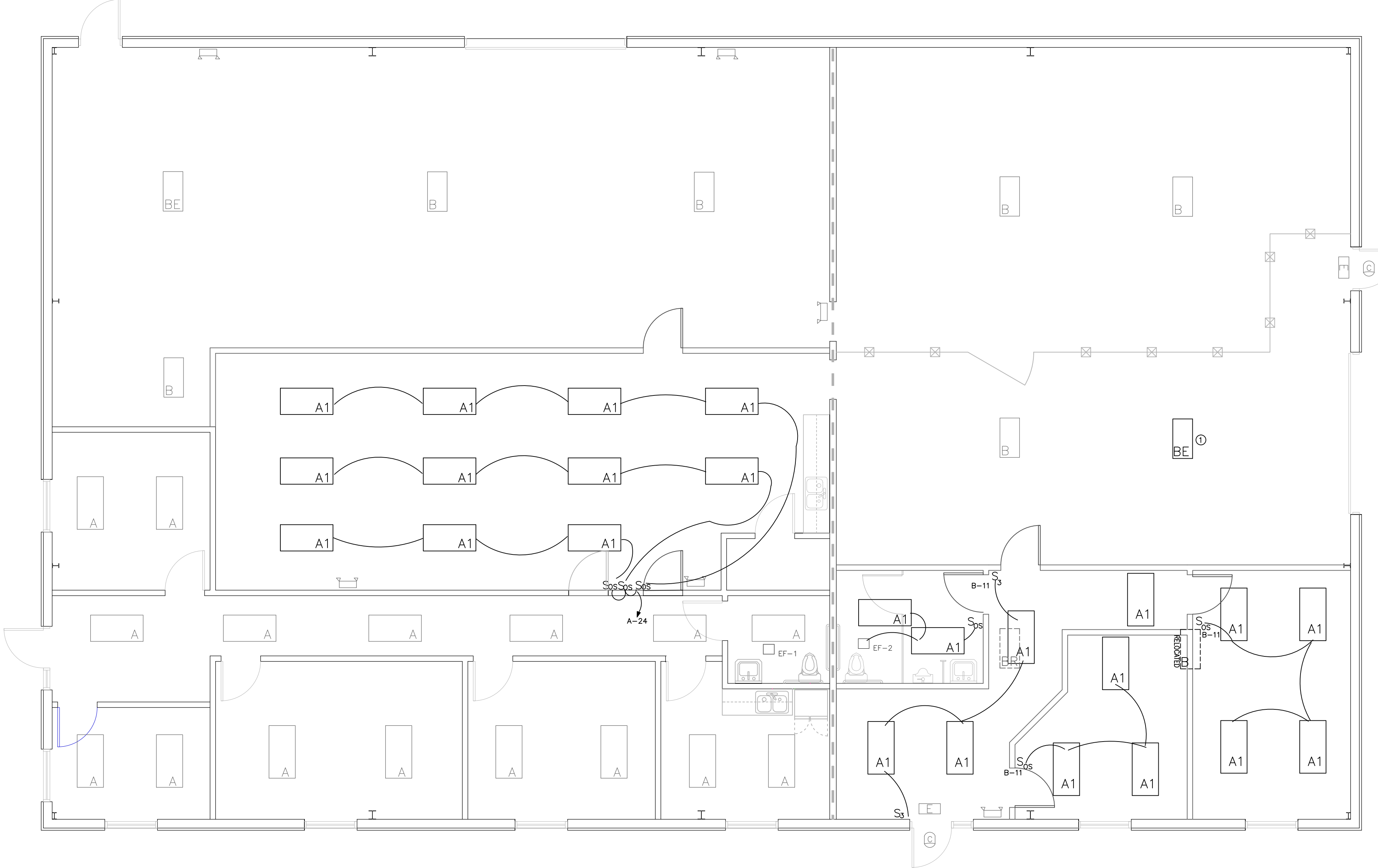
FIXTURE SCHEDULE				
SYMBOL	TYPE	STATUS	DESCRIPTION	MANUFACT./MODEL
A	LED, TYPE A	EXISTING	2X4 LAY-IN; FLAT PANEL LED, 35 WATT, 4000 LUMENS; MATCH EXISTING	COLUMBIA LJT24-35LWG OR MATCH EXISTING
A1	LED, TYPE A1	NEW	2X4 LAY-IN; FLAT PANEL LED, 35 WATT, 4000 LUMENS; MATCH EXISTING	COLUMBIA LJT24-35LWG OR MATCH EXISTING
B	LED, TYPE B	EXISTING	HIGH BAY LED, 248 WATT, EXISTING	
BR	LED, TYPE B	EXISTING	HIGH BAY LED, 248 WATT, EXISTING TO REMAIN ABOVE NEW CEILING	
BE	LED, TYPE BE	EXISTING	HIGH BAY LED, 248 WATT; W/ EMERGENCY BACK-UP BATTERY; EXISTING	
⊕	COMBINATION EXIST/EMERGENCY	EXISTING	POLYCARBONATE HOUSING; BATTERY BACK-UP; WHITE	DUAL LITE LT-UR OR EQUAL
⊕	EMERGENCY LIGHT	EXISTING	TWO 7.2 WATT 120V HEAD MINIMUM;	MULE SQED OR SIMILAR
⊕	EMERGENCY LIGHT, TYPE C	EXISTING	ARCHITECTURAL WET LOCATION LED; COLD WEATHER; NI-CAD BATTERY; 120 VOLT	DUAL LITE PG OR SIMILAR
⊕	ILLUMINATED EXIT LIGHT	EXISTING	POLYCARBONATE HOUSING; BATTERY BACK-UP; WHITE; W/ ARROWS AS APPROPRIATE	MULE MXBRU OR SIMILAR

LIGHTING DENSITY CALCULATION			
BUILDING USE	ALLOWED	ACTUAL	
OFFICE	677 SF X .82 W/SF= 556 WATTS	13 FIXTURES X 35 W =	455 WATTS
	ALLOWABLE TOTAL 556 WATTS	ACTUAL TOTAL	455 WATTS

WALL LEGEND
 --- EXISTING WALL, UL U419; TWO HOUR RATED
 - - - EXISTING UNRATED PARTITION WALL (NOT ON BLD. PERIMETER). 3 5/8" METAL STUD, 16" OC; ONE LAYER 5/8" DRYWALL EACH SIDE

LIGHTING KEY NOTES
 ① REPLACE ONE STANDARD HIGH BAY FIXTURE WITH THE EXISTING EMERGENCY HIGH BAY TO PROVIDE EMERGENCY LIGHT IN WAREHOUSE.

- SYMBOL LEGEND**
- ⊕ VP VAPOR-TIGHT LOW TEMP JAR LIGHT
 - ⊕ VS VAPOR-TIGHT LOW TEMP SURFACE LIGHT
 - ⊕ EXISTING 24" X 48" LAY-IN; 4 T-8 FLUORESCENT LAMPS
 - ⊕ TBM TO BE MOVED EXISTING 24" X 48" LAY-IN; 4 T-8 FLUORESCENT
 - ⊕ COMBINATION EXIT AND EMERGENCY LIGHT W/ BATTERY BACK-UP
 - ⊕ EMERGENCY LIGHT W/ BATTERY POWER
 - ⊕ EXIT LIGHT W/ BATTERY BACKUP
 - ⊕ DUPLEX RECEPTACLE; 20 A, 120V; MNT. CENTER AT 18" AFF
 - ⊕ DUPLEX RECEPTACLE; 20 A, 120V; MNT. CENTER AT X AFF
 - ⊕ DUPLEX RECEPTACLE; 20 A, 120V; MNT. CENTER 6" ABOVE COUNTERTOP, BACKSPASH OR BENCH;
 - ⊕ GFI DUPLEX RECEPTACLE; 20 A, 120V GROUND FAULT INTERRUPTER;
 - ⊕ WR DUPLEX RECEPTACLE; WEATHER RESISTANT, 20 A, 120V, W/ IN-U EXTRA DUTY COVER
 - ⊕ SHOW SHOW WINDOW RECEPTACLE
 - ⊕ JB JUNCTION BOX
 - ⊕ S SWITCH, SINGLE POLE
 - ⊕ S3 SWITCH, 3-WAY
 - ⊕ S_{OS} OCCUPANCY SENSOR LIGHTING CONTROLLER
 - ⊕ X-XX CIRCUIT NUMBER XX, PANEL X
 - ⊕ 48" AFF TOP OF DEVICE 48" ABOVE FINISHED FLOOR
 - ⊕ FL EXTERIOR FLOOD LIGHT W/ PHOTOCELL
 - ⊕ W EMERGENCY LIGHT WET LOCATION W/ BATTERY POWER
 - ⊕ PB PUSH BUTTON OR CONTROL DEVICE
 - ⊕ THERMOSTAT
 - ⊕ TELEPHONE/ DATA OUTLET; 48" AFF 4X4 BOX W/ 3/4" CONDUIT THRU CLG.
 - ⊕ DISCONNECT SWITCH
 - ⊕ NL NIGHT LIGHT (ALWAYS ON)



LIGHTING PROPOSED PLAN
SCALE: 3/16" = 1 FT.

MULLEN ENGINEERING
 703 N. MAIN ST.
 FUQUAY-VARINA, NC 27526
 919-906-0812
 FIRM # P-1150



DAWSON'S ELECTRIC ALTERATION
 280 JARCO DRIVE
 FUQUAY-VARINA, NC

DRAWN BY: CBM
 PLOT DATE: 4-16-2024
 ISSUED FOR: CONSTRUCTION
 REVISIONS:

LIGHTING PLANS

E-1