

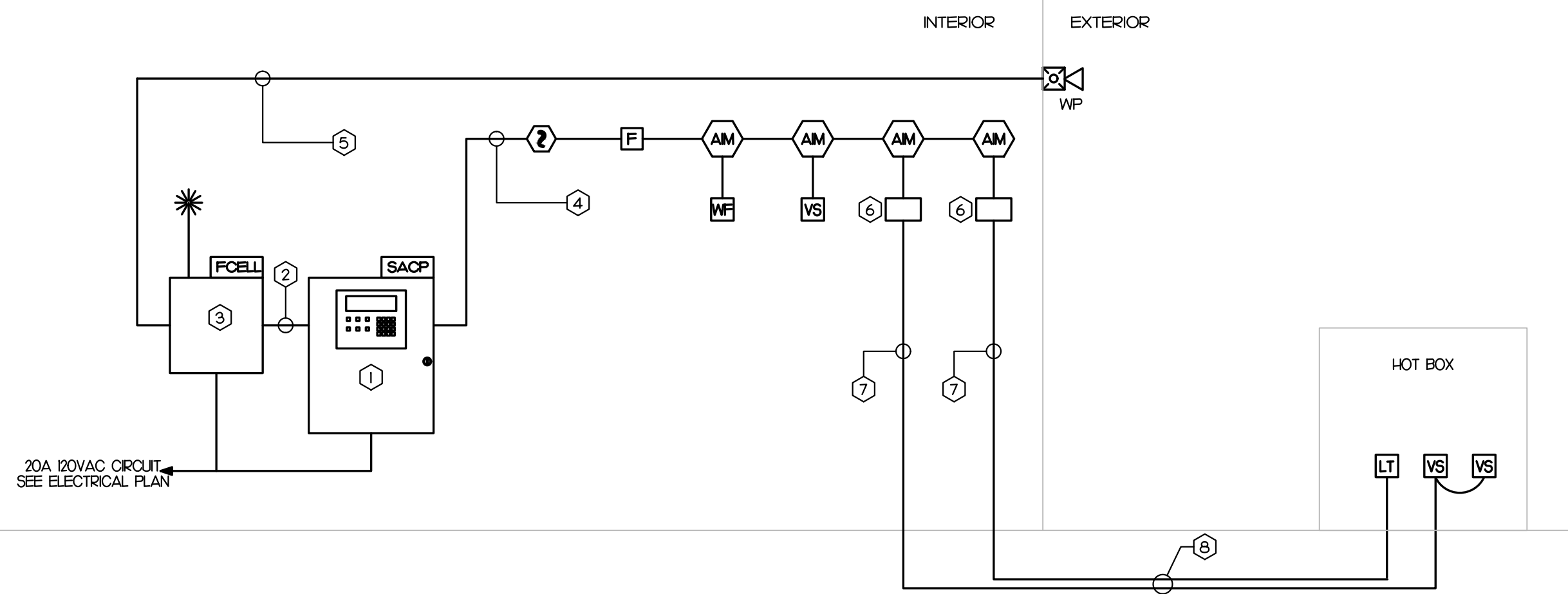
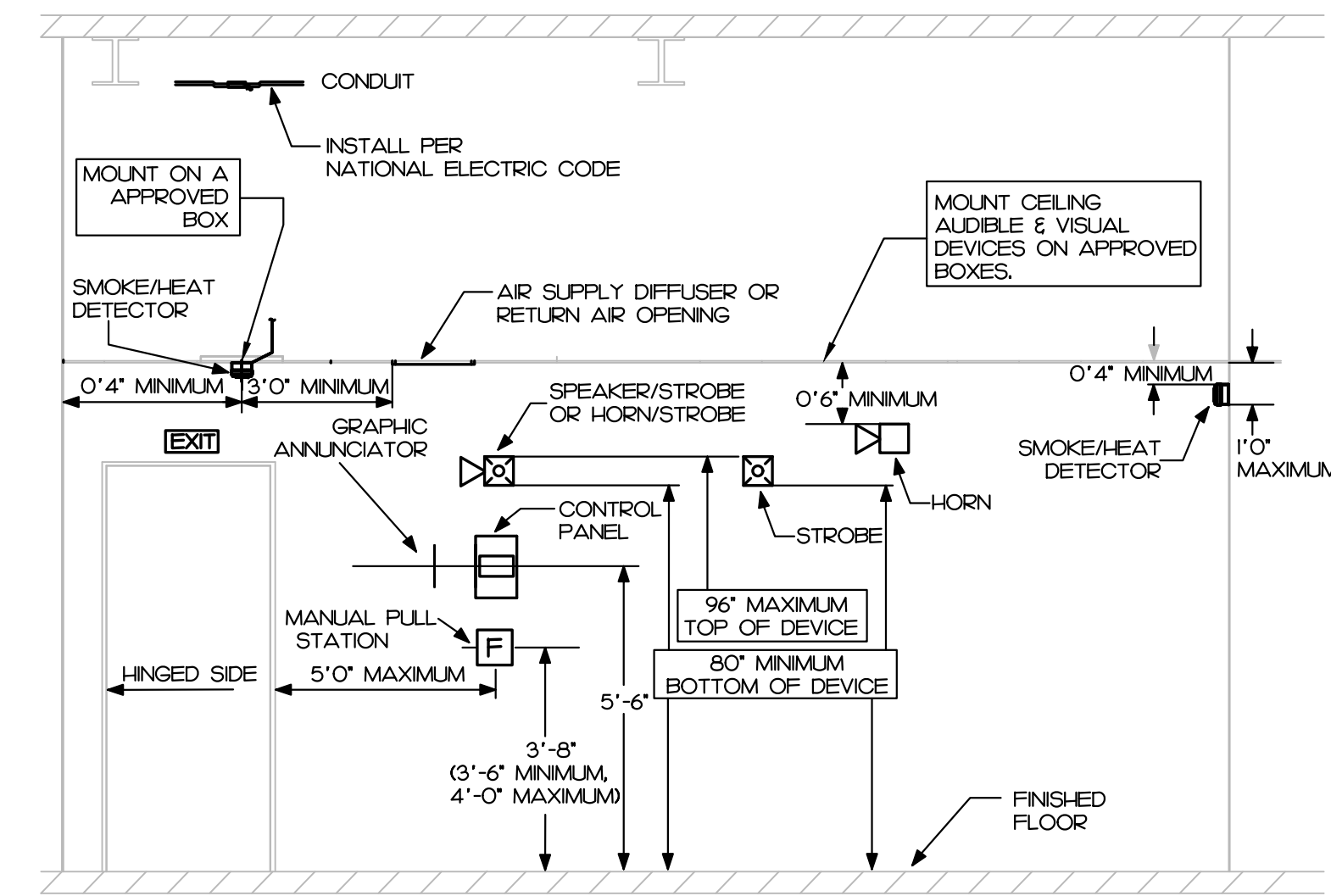
## SYMBOL LEGEND

SYMBOL	DESCRIPTION	REMARKS
	SMOKE DETECTOR, PHOTOELECTRIC ADDRESSABLE	FRELITE
	SPRINKLER ALARM PULL STATION, MOUNT 42" AFF. ADDRESSABLE	FRELITE
	FIRE SPRINKLER WATER FLOW SWITCH	BY SPRINKLER CONTRACTOR
	FIRE SPRINKLER VALVE SUPERVISORY SWITCH (TAMPER SWITCH)	BY SPRINKLER CONTRACTOR
	LOW TEMP SENSOR, TEMP SETTING 40F, NORMALLY OPEN ROOM TEMPERATURE	POTTER: RTS-O
	MONITOR MODULE ADDRESSABLE	FRELITE
	WEATHER PROOF SPRINKLER ALARM STROBE/HORN, MOUNT 80" AFF. 75 dbA SOUND LEVEL, 'XX' INDICATES CANDELA RATING, LISTED FOR 0' AND 10' LOCATION	FRELITE
	SPRINKLER ALARM CONTROL PANEL, SURFACE MOUNTED, ADDRESSABLE	FRELITE
	SPRINKLER ALARM CELLULAR COMMUNICATOR WITH BATTERY BACKUP, SOLE PATH COMMUNICATION, CELLULAR SURFACE MOUNTED	STARLINK SLE-TEV-FIRE
	ABOVE FINISHED CEILING	
	ABOVE FINISHED FLOOR - NOTE ALL MOUNTING DIMENSIONS GIVEN ARE TO THE BOTTOM OF THE OUTLET BOX	

## SPRINKLER ALARM NOTES

- SEE PLANS FOR QUANTITY AND LOCATION OF ALL EQUIPMENT.
- CONTRACTOR SHALL PROVIDE COMPLETE DOCUMENT PER 2018 FIRE CODE SECTION 907.11 AND 907.12 TO ENGINEER FOR APPROVAL PRIOR TO SUBMIT TO AND TESTING BY LOCAL FIRE MARSHAL'S OFFICE.
- PLACARD THE ENTIRE SPRINKLER ALARM SYSTEM. PROVIDE PANEL AND CIRCUIT NUMBERS ON A NAME PLATE AFFIXED TO THE FACE OF THE SPRINKLER ALARM CONTROL PANEL.
- CONTRACTOR SHALL PROVIDE ZONE MAPS COMPLETE WITH ADDRESSES FOR EACH SPRINKLER ALARM DEVICE IN WOODEN FRAME ADJACENT TO THE NEW SPRINKLER ALARM CONTROL PANEL.
- ELECTRICAL CONTRACTOR SHALL PROVIDE BATTERY CALCULATIONS AND OUT SHEETS FOR SPRINKLER ALARM SYSTEM TO ENGINEER FOR APPROVAL.
- ALL WIRING SHALL BE SUPERVISED.
- ALL WIRING SHALL BE PER MANUFACTURER'S SPECIFICATIONS.
- ALL WIRING IN WALLS OR FURRED SPACES SHALL BE IN CONDUIT.
- WHERE PERMITTED BY CODE, WIRING ABOVE ACCESSIBLE CEILINGS MAY BE RUN EXPOSED AND THE FOLLOWING REQUIREMENTS SHALL BE MET:
  - WIRING SHALL BE PLENUM RATED WHERE APPLICABLE.
  - PROVIDE BRIDLE RINGS FOR INDEPENDENT SPRINKLER ALARM CABLE SUPPORT UNLESS SPECIFICALLY NOTED OTHERWISE. ANALOG LOOP WIRING INCOMING AND OUTGOING SHALL NOT BE SUPPORTED IN THE SAME BRIDLE RING.
- ADDRESSABLE SLC CIRCUIT REQUIREMENTS:
  - WIRING SHALL BE "CLASS B"
  - MINIMUM CAPACITY OF ANALOG SENSORS PER LOOP SHALL BE 48.
  - MINIMUM CAPACITY OF ADDRESSABLE MONITORING DEVICES PER LOOP SHALL BE 48.
  - MINIMUM CAPACITY OF ADDRESSABLE CONTROL RELAY MODULES PER LOOP SHALL BE 48.
- NOTIFICATION CIRCUIT REQUIREMENTS:
  - WIRING SHALL BE "CLASS B"
  - PROVIDE WITH "SYNC MODULE" AS REQUIRED PER NFPA 72.
  - FURNISH NOTIFICATION CIRCUITS AS REQUIRED TO ACCOMMODATE CIRCUIT LOADING. NO NOTIFICATION CIRCUIT SHALL BE LOADED TO MORE THAN 80% CAPACITY.
- DIGITAL ALARM COMMUNICATOR:
  - WHERE SINGLE COMMUNICATION PATH WITH INTERNET NETWORK IS ACCEPTABLE BY THE LOCAL FIRE MARSHAL, PROVIDE WITH THE COMMUNICATOR IN LIEU OF 2 LINE TELEPHONE IN COMPLIANCE WITH NFPA 72 26.6.3.15.
  - WHERE DUAL COMMUNICATION PATHS OF CELLULAR NETWORK AND INTERNET NETWORK ARE REQUIRED BY THE LOCAL FIRE MARSHAL, PROVIDE WITH COMMUNICATOR IN LIEU OF 2 LINE TELEPHONE.
  - FIELD COORDINATE TYPE MATCH MONITORING COMPANY.
- FOR SPRINKLER SYSTEM:
  - FIELD COORDINATE QUANTITY AND LOCATION OF FLOW AND TAMPER SWITCHES WITH SPRINKLER'S FINAL DRAWINGS AND/OR CIVIL FINAL DRAWING FOR TAMPER SWITCH FOR FIV VALVE.
  - PROVIDE MONITORING MODULES AS REQUIRED FOR SPRINKLER SYSTEM.

## NFPA 72 AND ADA DEVICE INSTALLATION REQUIREMENTS



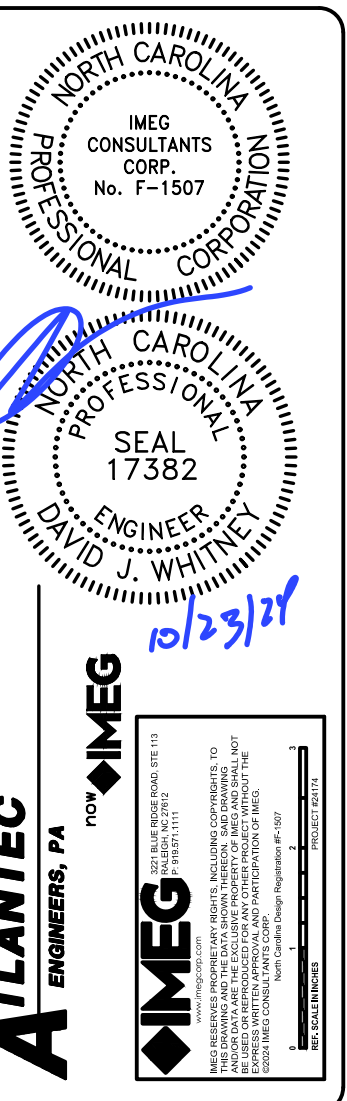
### KEY NOTES

- ADDRESSABLE FIRE ALARM CONTROL PANEL.
- 2 LINE TELEPHONE CABLE IN CONDUIT.
- CELLULAR DIGITAL ALARM COMMUNICATOR. SEE FIRE ALARM NOTE AND LEGEND FOR REQUIREMENTS.
- ADDRESSABLE CIRCUIT.
- NOTIFICATION APPLIANCE CIRCUIT.
- PROVIDE SURGE PROTECTOR AS REQUIRED FOR INITIATING CIRCUIT TO INITIATING DEVICE LOCATED OUTSIDE BUILDING.
- INITIATING CIRCUIT.
- WIRING IN UNDERGROUND CONDUIT, MIN. SIZE OF 1/2" MIN. BURIAL DEPTH OF 24" BELOW FINISHED GRADE.

### SPRINKLER ALARM SYSTEM INPUT/OUTPUT MATRIX

SYSTEM INPUTS	SYSTEM OUTPUTS																				
	SACP ANNUNCIATION										NOTIFICATION					REQUIRED FIRE SAFETY CONTROL					
1 SPRINKLER ALARM SYSTEM AC POWER FAILURE																					
2 SPRINKLER ALARM SYSTEM LOW BATTERY																					
3 OPEN CIRCUIT																					
4 GROUND FAULT																					
5 NOTIFICATION APPLIANCE CIRCUIT SHORT																					
6 BUILDING MANUAL PULL STATIONS																					
7 AREA SMOKE DETECTORS																					
8 SPRINKLER TAMPER SWITCH																					
9 SPRINKLER WATER FLOW IN BUILDING																					
10 HOT BOX LOW TEMPERATURE																					

REVISIONS



PREPARED FOR:  
J+D SPRINKLER

HARBOR FREIGHT  
SPRINKLER ALARM

NORTH CAROLINA  
ERWIN

CONTENTS:  
SPRINKLER ALARM  
RISER, NOTES,  
DETAILS

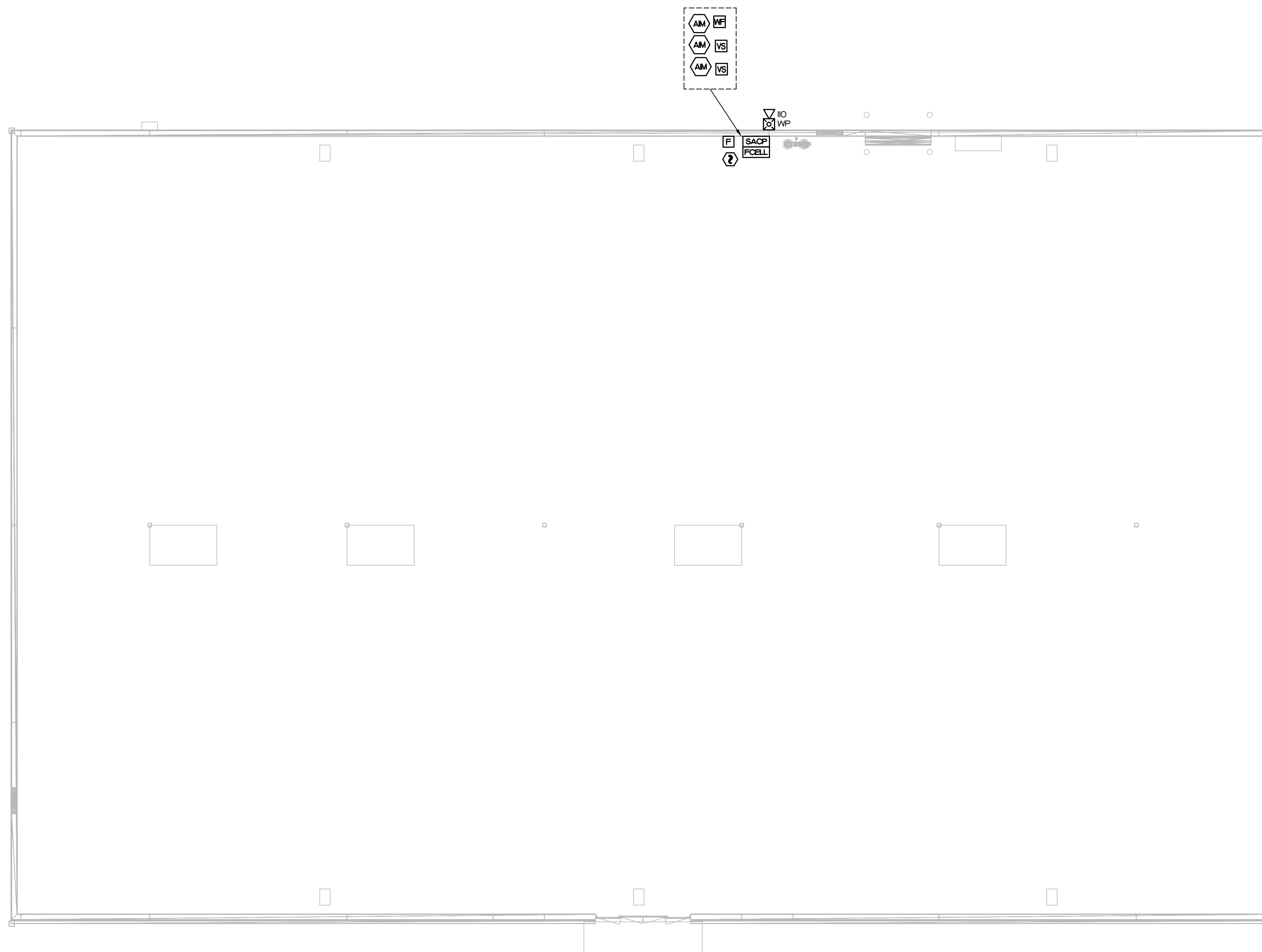
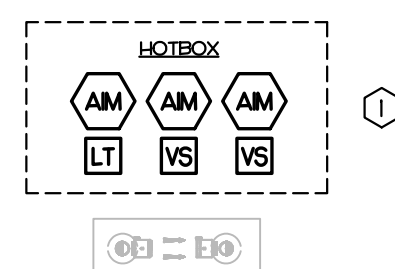
DATE:  
OCTOBER 23, 2024

DESIGNER: SWM  
ENGINEER: DJW

SHEET NO.  
**SA-1**  
OF 2

**KEY NOTES**

① HOT BOX ON SITE FOR BACKFLOW PREVENTION. COORDINATE EXACT LOCATION WITH ARCHITECTURAL SITE PLAN.



REVISIONS


Professional Engineer Seal for David J. Whittney, State of North Carolina, Seal No. 17382. Includes logos for IMEG Consultants Corp. and Atlantec Engineers, PA.

PREPARED FOR:  
**J+D SPRINKLER**

**HARBOR FREIGHT  
SPRINKLER ALARM**

ERWIN NORTH CAROLINA

CONTENTS:  
**SPRINKLER  
ALARM  
PLAN**

DATE:  
**OCTOBER 23, 2024**

DESIGNER: **SWM**  
ENGINEER: **DJW**

SHEET NO.  
**SA-2**

OF 2

**1 SPRINKLER ALARM PLAN**  
SCALE: 1/8" = 1'-0"

2/1/24