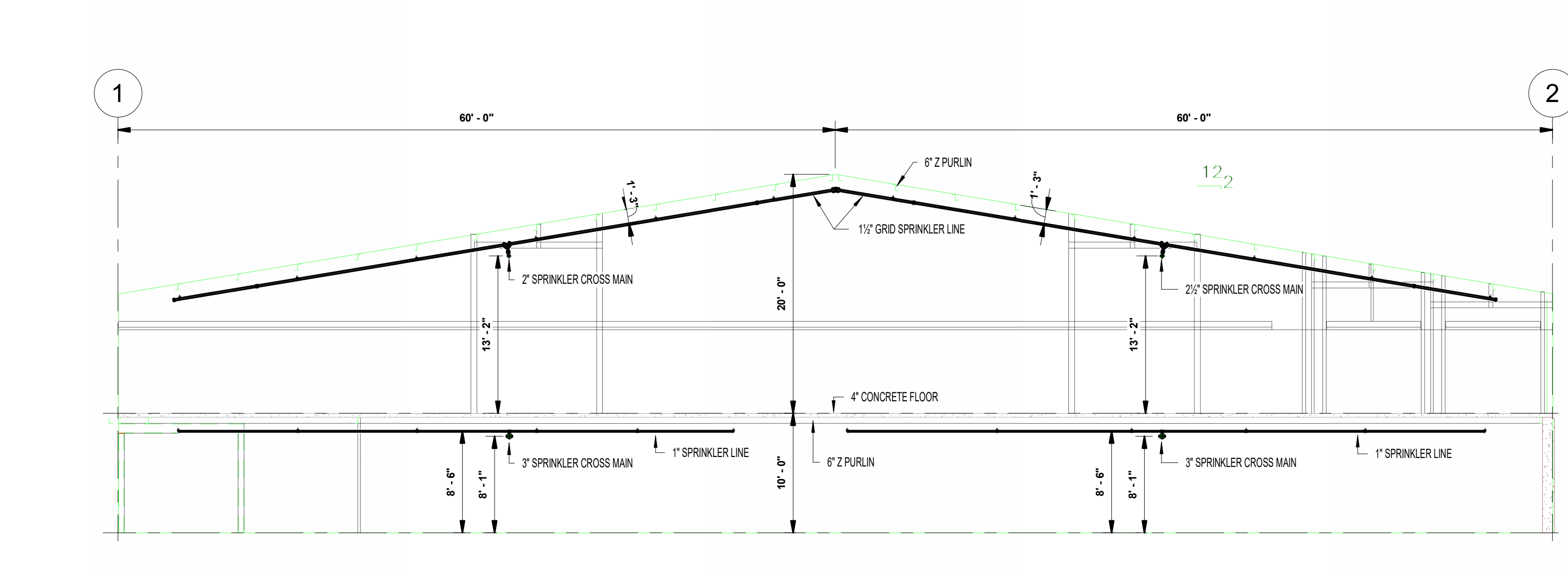
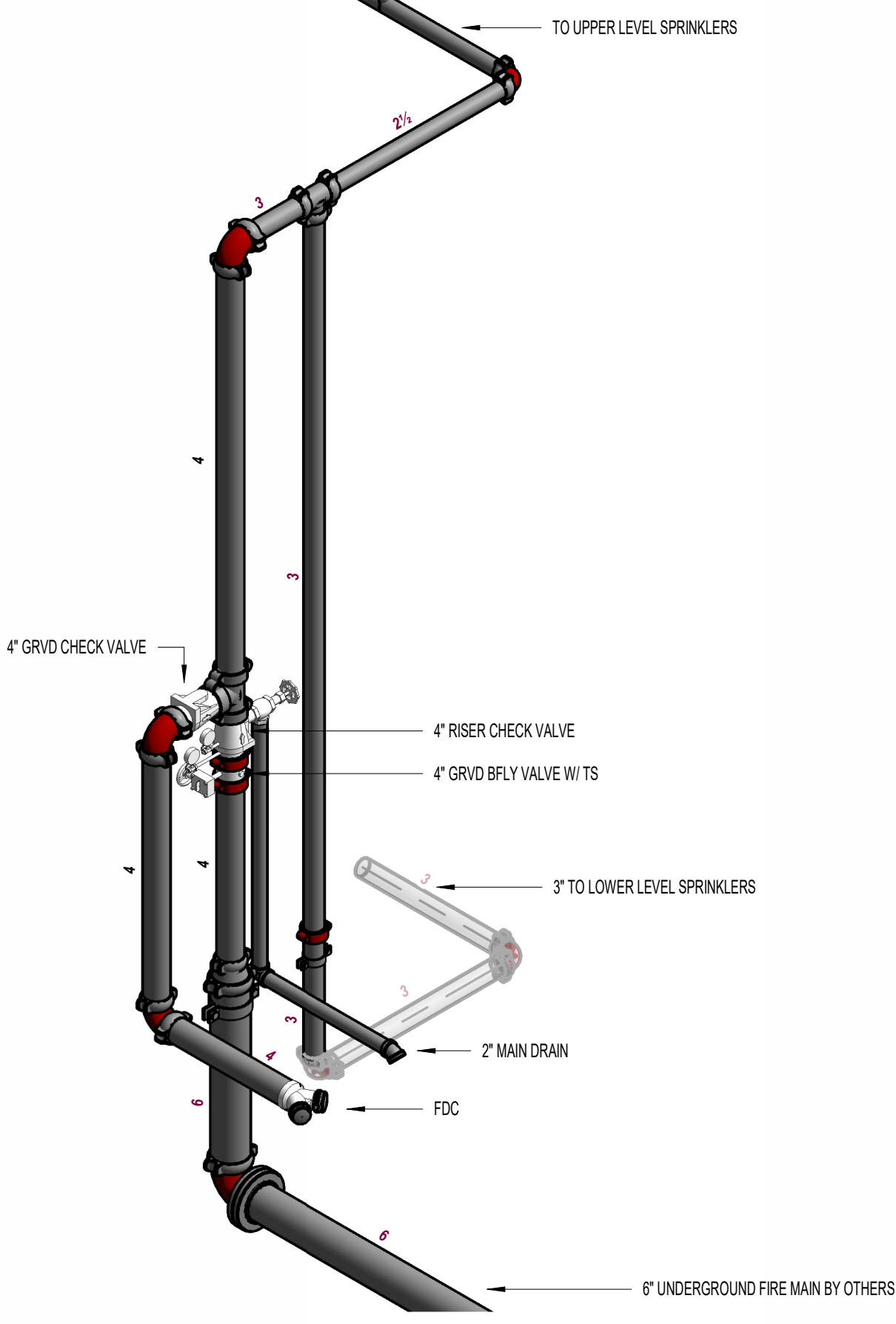


ENCLOSURE MODEL: 400T-AL
 JOB: FUQUAY VARIAN PLAZA (STORAGE)
 DRAWN BY: PP SCALE: NONE DATE: JUNE 2015
 REMOVABLE ACCESS PANEL: 28 TAC x 54" PINE EACH SIDE
 3/4" AIR WATER TIGHT GASKET PER ASSE 988
 1. MODEL NOT TO SCALE
 2. ALL DIMENSIONS ARE IN INCHES UNLESS NOTED OTHERWISE
 3. ALL DIMENSIONS ARE TO FACE UNLESS NOTED OTHERWISE
 4. ALL DIMENSIONS ARE TO CENTER UNLESS NOTED OTHERWISE
 5. ALL DIMENSIONS ARE TO CENTER UNLESS NOTED OTHERWISE
 6. MODEL NOT TO SCALE
 7. MODEL NOT TO SCALE
 8. MODEL NOT TO SCALE
 9. MODEL NOT TO SCALE
 10. MODEL NOT TO SCALE

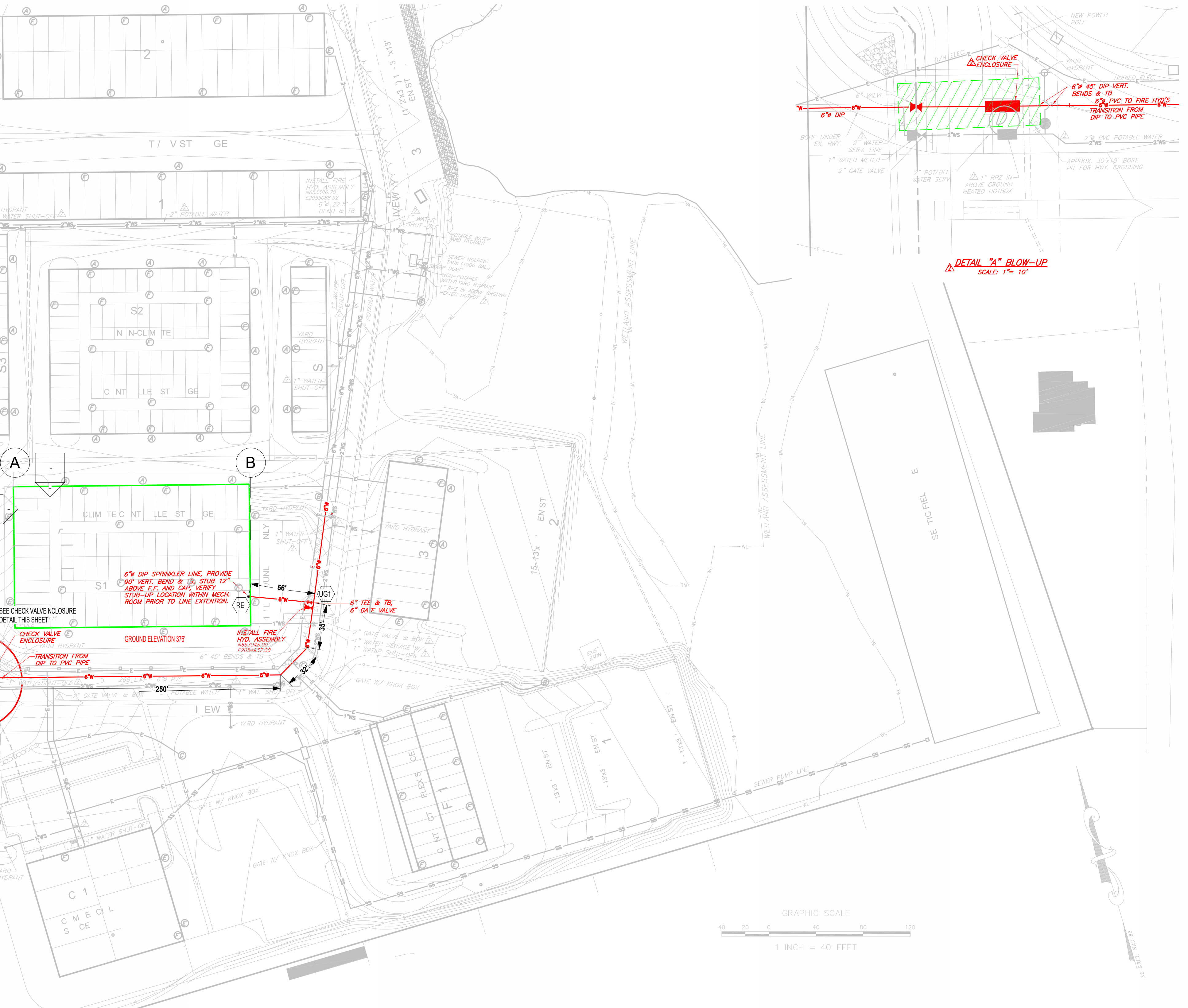
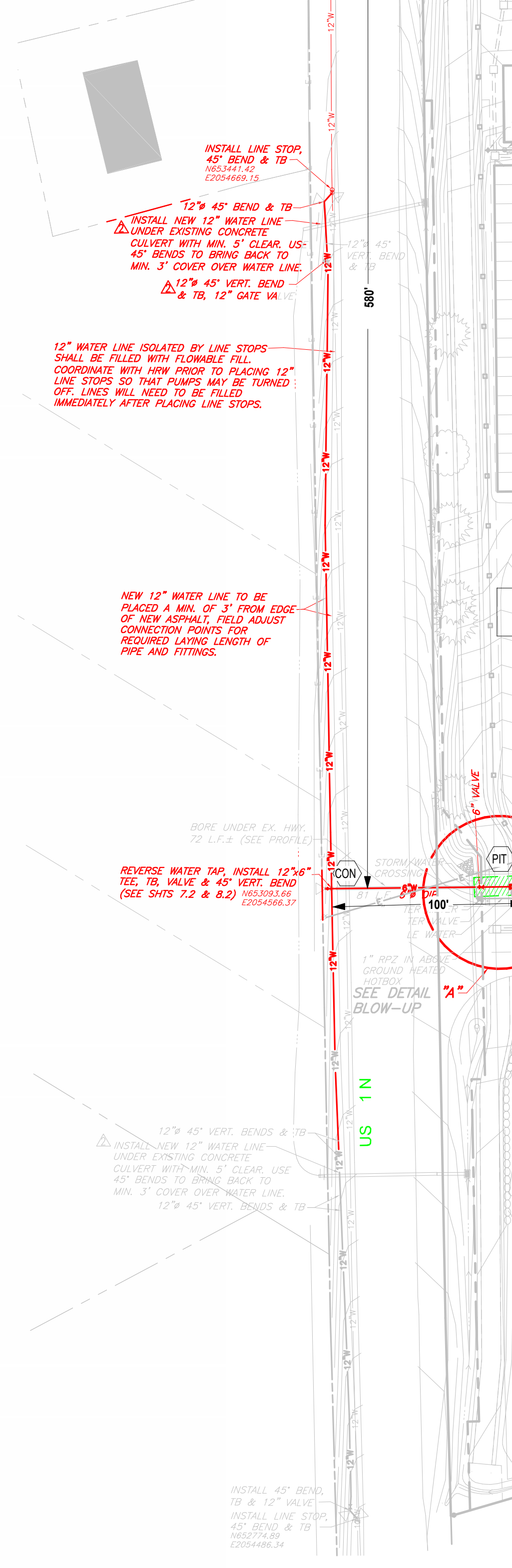


1 BUILDING CROSS SECTION
 1/8" = 1'-0"



2 SPRINKLER RISER DETAIL (ISOMETRIC)

4. WATER SUPPLY INFORMATION
 A. TEST BY: ENGINEERING PLANNING MANAGEMENT, INC.
 B. TEST DATE AND TIME: 10-05-23 AT 9:48 AM
 C. STATIC: 109.8 PSI
 D. RESIDUAL: 88 PSI
 E. FLOW: 1597 G.P.M.



3 SITE
 1" = 50'-0"

GENERAL NOTES

- PROJECT INFORMATION:
 - PROJECT NAME: BAUCOM BUSINESS PLAZA (STORAGE)
 - LOCATION: 11132 U.S. 401 N FUQUAY VARINA, NC 27526
- BUILDING CONSTRUCTION: NEW CONSTRUCTION
 - EXTERIOR: STEEL WAINSCOT / MASONRY
 - INTERIOR: 2 PURLINS ON STEEL BEAMS
 - FLOOR: CONCRETE
 - NUMBER OF FLOORS: 2 FLOOR
 - TOTAL SQUARE FEET: 48,000 SQFT
 - BUILDING HEIGHT: 30'-0"
- DESIGN MODIFIED PER NFPA 13 (2013)
 - TYPE OF SYSTEM: WET
 - MISCELLANEOUS STORAGE
 - STORAGE HEIGHT: 12'-0" MAX
 - DESIGNED TO ORDINARY HAZARD II, (20 GPM OVER THE MOST REMOTE 1500 SQFT) WITH 250 GPM HOSE ALLOWANCE
- WATER SUPPLY INFORMATION:
 - TEST BY: ENGINEERING PLANNING MANAGEMENT, INC.
 - TEST DATE AND TIME: 10-05-23 AT 9:48 AM
 - STATIC: 109.8 PSI
 - RESIDUAL: 88 PSI
 - FLOW: 1597 G.P.M.
 - SOURCE: FIRE HYDRANT ON 12' CITY MAIN @ 11132 US 01 N, FUQUAY VARINA, NC
- UNDERGROUND FIRE MAIN:
 - NEW BY FIRE MAIN BY OTHERS, SHOWN FOR HYDRAULIC REFERENCE ONLY.
 - SPRINKLER CONTRACT STARTS AT A 6" CONNECTION INSIDE BUILDING
- PIPE AND FITTINGS:
 - RISER, FEED MAIN, CROSS-MAIN
 - PIPE: SCHEDULE 10
 - FITTINGS: SHORT PATTERN GROOVED FITTINGS W/ RIGID COUPLINGS U.S.O.
 - CONNECTIONS: WELDED GROOVED OUTLETS U.S.O.
 - GRID BRANCHLINES TO BE WELDED:
 - PIPE: 1 1/2" SCHEDULE 10 GROOVED U.S.O.
 - FITTINGS: SHORT PATTERN GROOVED FITTINGS W/ RIGID COUPLINGS U.S.O.
 - ARMADORS: 1" SCHEDULE 40
 - FITTINGS: STANDARD WEIGHT THREADED FITTINGS
- FIRE SPRINKLER SYSTEM:
 - ALL MATERIALS AND INSTALLATION SHALL CONFORM TO NFPA
 - CONTRACTOR'S MATERIAL AND TEST CERTIFICATE FOR ABOVEGROUND PIPING SHALL BE COMPLETED AND COPIES BE PROVIDED TO THE OWNER AND AUTHORITY HAVING JURISDICTION AS DIRECTED.
- GENERAL MATERIALS:
 - ALL COMPONENTS AND EQUIPMENT OF THE FIRE SPRINKLER SYSTEM SHALL BE UL LISTED AND/OR FACTORY MUTUAL APPROVED.
 - ALL DEVICES SHALL BE INSTALLED IN CONFORMANCE WITH NFPA AND/OR MANUFACTURERS LITERATURE.
- SPRINKLER HEADS:
 - ALL SPRINKLER HEADS SHALL BE LISTED AND APPROVED FOR USE AS SPECIFIED PER NFPA 13 AND FM.
- HANGERS AND SUPPORTS:
 - HANGER ROD FOR PIPE 1 1/4" SHALL BE 3/8" MACHINE THREAD ROD
 - HANGER ROD FOR PIPE 6"-8" SHALL BE 1/2" MACHINE THREAD ROD
 - C SPACING: Per NFPA-13
 - SCHEDULE 40 PIPE: 1" THRU 1 1/4" SHALL BE 12'-0" O.C. MAX.
 - SCHEDULE 40 PIPE: 1 1/2" THRU 8" SHALL BE 15'-0" O.C. MAX.
 - TRAPEZE AND OTHER SPECIAL HANGERS SHALL CONFORM TO NFPA 13 FOR STYLE AND TYPE USED AND/OR THE SPECIAL LISTING APPROVED FOR THE FIRE SPRINKLER SYSTEM.
- VALVES AND SPECIAL EQUIPMENT:
 - ALL VALVES AND EQUIPMENT OF THE FIRE SPRINKLER SYSTEM SHALL BE UL LISTED/CLASSIFIED AND/OR FACTORY MUTUAL APPROVED IN CONFORMANCE WITH NFPA 13 AND SPECIFICATIONS
 - FIRE DEPARTMENT CONNECTION:
 - LOCATION: AT HOT BOX NEAR 2ND STREET (BY OTHERS)
- FABRICATION:
 - FABRICATION SHALL BE PERFORMED BY EXPERIENCED WORKMEN
 - WELDING SHALL BE BY A CERTIFIED WELDER AND COMPLY WITH A.W.S. 10.9 AR-3
 - NO WELDING SHALL BE PERFORMED ON JOB SITE
 - DUE AND PROPER CARE SHALL BE TAKEN TO REMOVE CUT/DRILLED COUPONS FROM PIPING DURING THE WELDING PROCESS
 - THREADS AND GROOVES FOR EACH TYPE OF FITTING SHALL BE CUT OR ROLLED TO CONFORM WITH THE FITTINGS MANUFACTURER'S LISTED REQUIREMENT.
- INSTALLATION:
 - INSTALLATION SHALL BE PERFORMED BY EXPERIENCED FIRE SPRINKLER WORKMEN
 - INSTALLATION SHALL CONFORM TO NFPA 13 STANDARD.
- SPECIAL NOTES:
 - WATER SHIELDS, WHEN REQUIRED TO LIMIT SPRINKLER DISCHARGE ON ELECTRICAL EQUIPMENT, PANELS, AND SWITCH GEAR, SHALL BE PROVIDED AND INSTALLED BY OTHERS
 - CENTRAL STATION ALARM AND/OR EVACUATION ALARM SYSTEM SHALL BE PROVIDED AND INSTALLED BY OTHERS
 - SWITCHES AND BELLS FURNISHED AND MOUNTED BY SPRINKLER CONTRACTOR SHALL BE WIRED AND CONNECTED BY OTHERS AND IF REQUIRED TO CONNECT TO BUILDING'S ALARM SYSTEM IT SHALL ALSO BE EXTENDED WITH WIRING TO THE MONITORING ALARM SYSTEM BY OTHERS.

IMPORTANT
 In locations that are subject to freezing conditions, it is the owner's responsibility to provide heat throughout areas protected by wet pipe sprinkler systems and in enclosures for dry pipe, deluge or other types of valves controlling water supplies to sprinkler systems.
 This drawing including all information and design concept herein contained is the property of Carolina Fire Protection Company, Inc. and is loaned upon express conditions that the same be returned to CFP, Inc. upon request; all information contained herein shall be treated as secret, and confidential; no reproduction of this drawing or any part thereof shall be made without written consent of CFP, Inc.

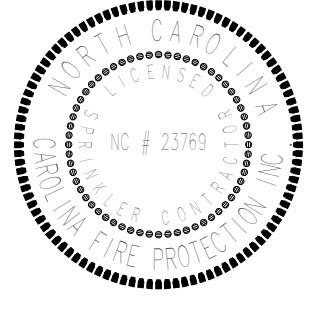
CONTRACT RESPONSIBILITIES	
ITEM	C.F.P. / OTHERS
STREET WATER CONNECTION	N/A
UNDERGROUND WATER MAINS	N/A
EXCAVATIONS	N/A
BACKFILL	N/A
WIRING	N/A
PAINTING	N/A

SYMBOLS	
	GATE VALVE (SEE NOTES)
	FIRE HOSE ASSEMBLY
	FLOW SWITCH (P.S.)
	MONITOR SWITCH
	FIRE DEPT. CONN. (STANDARD)
	FIRE DEPT. CONN. (FLUSH)
	BUTTERFLY VALVE
	FIRE DEPT. CONN. (SIDE WALK)
	FIRE DEPT. CONN. (VALVE)
	KEY GATE SECTIONAL VALVE
	ALARM VALVE (ALT)
	DRY PIPE VALVE
	WAFAER CHECK VALVE
	SWING CHECK VALVE
	SYSTEM RISER
	INSPECTOR'S TEST
	GLOBE VALVE
	FLANGED CONNECTION
	ELECTRIC BELL
	WATER MOTOR GONGS (W.M.G.)
	FIRE DEPT. CONN. (STANDARD)
	FIRE DEPT. CONN. (FLUSH)
	FIRE DEPT. CONN. (SIDE WALK)
	FIRE DEPT. CONN. (VALVE)
	KEY GATE SECTIONAL VALVE
	ALARM VALVE (ALT)
	DRY PIPE VALVE
	WAFAER CHECK VALVE
	SWING CHECK VALVE
	SYSTEM RISER
	INSPECTOR'S TEST
	GLOBE VALVE
	FLANGED CONNECTION

ABBREVIATIONS	
BOS	Bottom of Beam
SOB	Bottom of Deck
TOP	Top of Pipe
STB	Below Top of Steel
DO	Drill
HY	Hose Valve
M.C.	Manhole and Cap
NC	Not in Contract
NTS	Not to Scale
DU	Open Bar Joint
PN	Pressure Noted Value
RM	Roof Member
SP	Structure
TOB	Top of Beam
TOP	Top of Pipe
TOS	Top of Steel
UND	Under Next Plane

SYSTEM TYPE	
WET	<input type="checkbox"/> DELUGE <input type="checkbox"/>
DRY	<input type="checkbox"/> PREACTION <input type="checkbox"/>

APPROVALS		
<input type="checkbox"/> ISO	OUT	IN
<input type="checkbox"/> IRI	OUT	IN
<input type="checkbox"/> FM	OUT	IN
<input type="checkbox"/>	OUT	IN



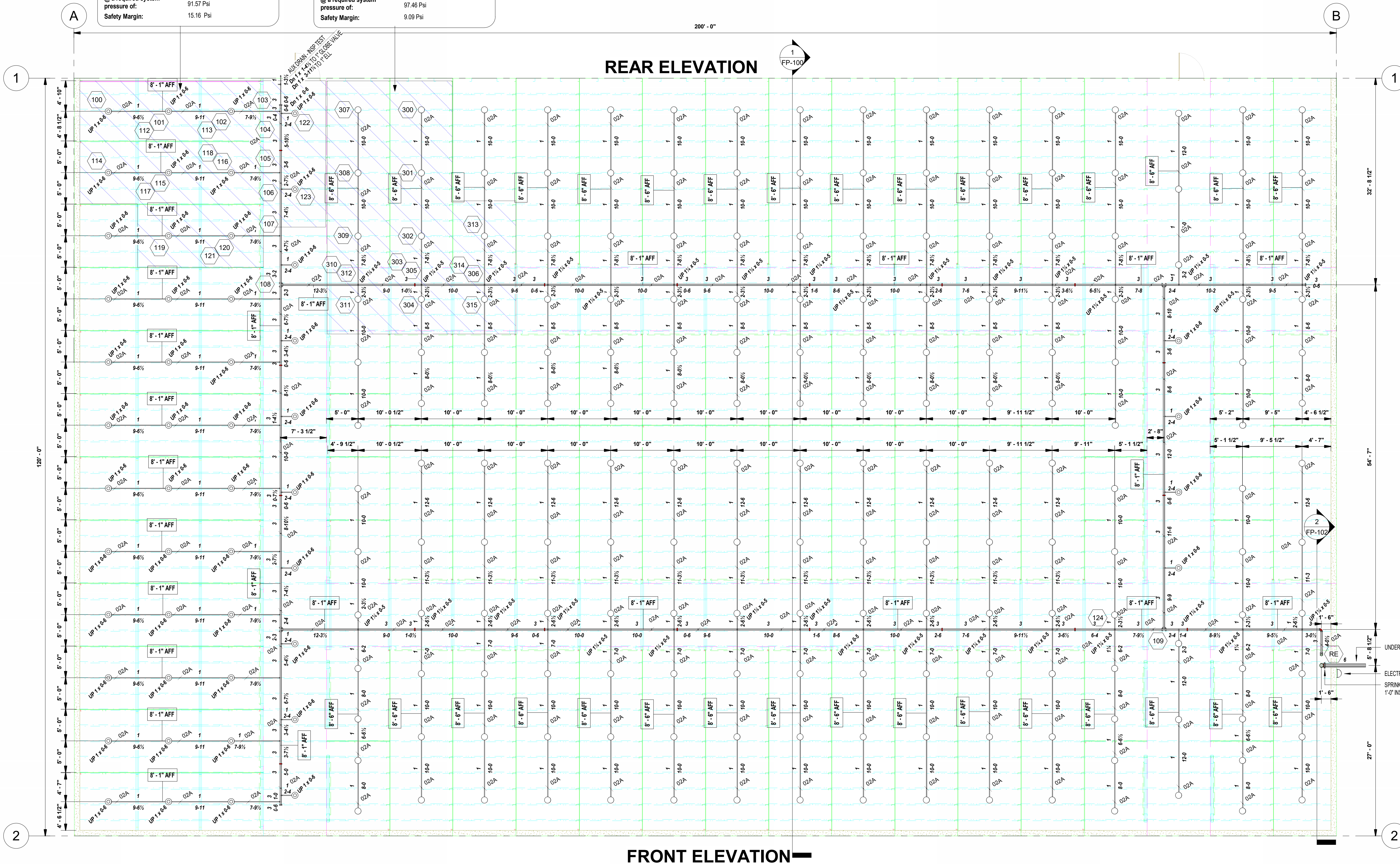
CAROLINA FIRE PROTECTION
 4055 HODGES CHAPEL ROAD
 DUNN, N.C. 28334
 Phone (910) 892-1700
 Fax (910) 892-7322

CONTRACT NAME: BAUCOM BUSINESS PLAZA (STORAGE) 11132 U.S. 401 N FUQUAY VARINA, NC 27526		CHECKED BY: Checker
CONTRACT WITH: Owner	DATE:	Issue Date
DESCRIPTION: SITE PLAN, MISC NOTES & DETAILS	SCALE:	As indicated
PROJECT NO.:	CONTRACT NO.:	Project Number
DRAWN BY: IFPDC-GB	DRAWING NO.:	IFPDC-GB
DATE:	DATE:	DATE

Revisions			
#	Date	Description	By

Fire Protection System Demand:	
Remote area number:	1
Occupancy classification:	DH-2 (STORAGE)
Density:	20 Gpm/SqFt
Area of application:	900 SqFt
No. of sprinklers calculated:	10
Total Hose Streams:	250 GPM
Total Additional Flow:	0 GPM
Total water required (including hose streams):	553.08 GPM
at a required system pressure of:	91.57 Psi
Safety Margin:	15.16 Psi

Fire Protection System Demand:	
Remote area number:	3
Occupancy classification:	DH-2 (STORAGE)
Density:	20 Gpm/SqFt
Area of application:	900 SqFt
No. of sprinklers calculated:	10
Total Hose Streams:	250 GPM
Total Additional Flow:	0
Total water required (including hose streams):	570.33 GPM
at a required system pressure of:	97.46 Psi
Safety Margin:	9.09 Psi

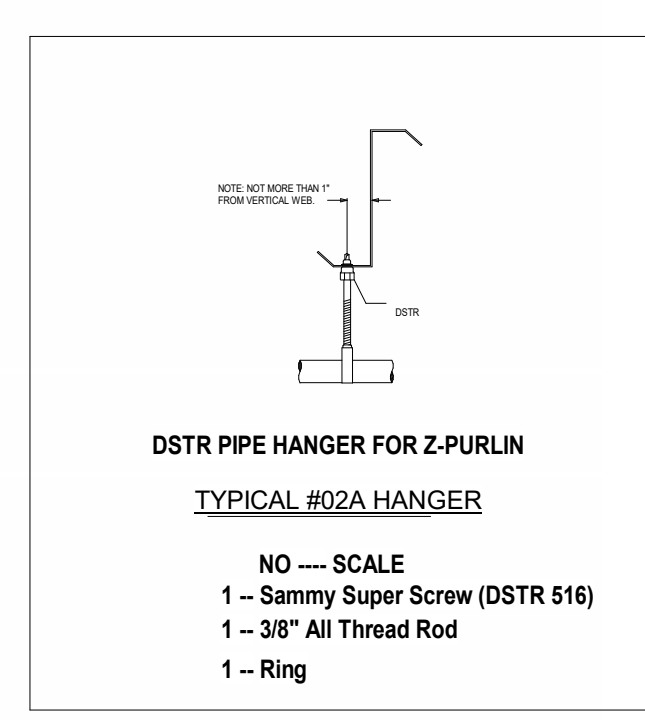


GENERAL NOTES

- PROJECT INFORMATION:
 - PROJECT NAME: BAUCOM BUSINESS PLAZA (STORAGE)
 - LOCATION: 11132 U.S. 401 N. FUQUAY VARINA, NC 27526
- BUILDING CONSTRUCTION: NEW CONSTRUCTION
 - EXTERIOR: STEEL WAINSCOT / MASONRY
 - INTERIOR: Z PURLINS ON STEEL BEAMS
 - FLOOR: CONCRETE
 - NUMBER OF FLOORS: 2 FLOOR
 - TOTAL SQUARE FEET: 48,000 SQFT
 - BUILDING HEIGHT: 30'-0"
- DESIGN MODIFIED PER NFPA 13 (2013)
 - TYPE OF SYSTEM: WET
 - MISCELLANEOUS STORAGE
 - STORAGE HEIGHT: 12'-0" MAX
 - DESIGNED TO ORDINARY HAZARD II, (20 GPM OVER THE MOST REMOTE 1500 SQFT) WITH 250 GPM HOSE ALLOWANCE
- WATER SUPPLY INFORMATION:
 - TEST BY: ENGINEERING PLANNING MANAGER, INC.
 - TEST DATE AND TIME: 10-05-23 AT 9:48 AM
 - STATIC: 109.8 P.S.I.
 - RESIDUAL: 88 P.S.I.
 - FLOW: 1597 G.P.M.
 - SOURCE: FIRE HYDRANT ON 12" CITY MAIN @ 11132 US 01 N. FUQUAY VARINA, NC
- UNDERGROUND FIRE MAIN:
 - NEW 6" FIRE MAIN BY OTHERS, SHOWN FOR HYDRAULIC REFERENCE ONLY.
 - SPRINKLER CONTRACT STARTS AT A 6" CONNECTION INSIDE BUILDING
- PIPE AND FITTINGS:
 - RISER, FEED-MAIN, CROSS-MAIN
 - PIPE: SCHEDULE 10
 - FITTINGS: SHORT PATTERN GROOVED FITTINGS W/ RIGID COUPLINGS U.S.O.
 - CONNECTIONS: WELDED GROOVED OUTLETS, U.S.O.
 - GRID BRANCHLINES TO BE WELDED:
 - PIPE: 1 1/2" SCHEDULE 10 GROOVED U.S.O.
 - FITTINGS: SHORT PATTERN GROOVED FITTINGS W/ RIGID COUPLINGS U.S.O.
 - ARMOVERS: 1" SCHEDULE 40
 - FITTINGS: STANDARD WEIGHT THREADED FITTINGS
 - SCHEDULE BRANCHLINES TO BE THREADED:
 - PIPE: SCHEDULE 40
 - FITTINGS: STANDARD WEIGHT THREADED FITTINGS
- FIRE SPRINKLER SYSTEM:
 - ALL MATERIALS AND INSTALLATION SHALL CONFORM TO NFPA 13
 - CONTRACTOR'S MATERIAL AND TEST CERTIFICATE FOR ABOVEGROUND 1 1/2" INSD FACE OF WALL PIPING SHALL BE COMPLETED AND COPIES PROVIDED TO THE OWNER AND AUTHORITY HAVING JURISDICTION AS DIRECTED.
- GENERAL MATERIALS:
 - ALL COMPONENTS AND EQUIPMENT OF THE FIRE SPRINKLER SYSTEM SHALL BE UL LISTED AND/OR FACTORY MUTUAL APPROVED.
 - ALL DEVICES SHALL BE INSTALLED IN CONFORMANCE WITH NFPA AND/OR MANUFACTURERS LITERATURE.
- SPRINKLER HEADS:
 - ALL SPRINKLER HEADS SHALL BE LISTED AND APPROVED FOR USE AS SPECIFIED PER NFPA 13 AND FM.
- HANGERS AND SUPPORTS:
 - HANGER ROD FOR PIPE 1 1/2" SHALL BE 3/8" MACHINE THREAD ROD
 - HANGER ROD FOR PIPE 6" SHALL BE 1/2" MACHINE THREAD ROD
 - C. SPACING: Per NFPA-13
 - SCHEDULE 40 PIPE: 1 1/2" THRU 1-1/4" SHALL BE 12'-0" O.C. MAX.
 - SCHEDULE 40 PIPE: 1-1/2" THRU 1" SHALL BE 15'-0" O.C. MAX.
 - TRAPEZOID AND OTHER SPECIAL HANGERS SHALL CONFORM TO NFPA 13 FOR STYLE AND TYPE USED AND/OR THE SPECIAL LISTING APPROVED FOR THE FIRE SPRINKLER SYSTEM.
- VALVES AND SPECIAL EQUIPMENT:
 - ALL VALVES AND EQUIPMENT OF THE FIRE SPRINKLER SYSTEM SHALL BE UL LISTED/CLASSIFIED AND/OR FACTORY MUTUAL APPROVED IN CONFORMANCE WITH NFPA 13 AND SPECIFICATIONS
- FIRE DEPARTMENT CONNECTION:
 - LOCATION: AT HOT BOX NEAR 2ND STREET (BY OTHERS)
- FABRICATION:
 - FABRICATION SHALL BE PERFORMED BY EXPERIENCED WORKMEN.
 - WELDING SHALL BE BY A CERTIFIED WELDER AND COMPLY WITH A.W.S. 10.9 AR-3
 - NO WELDING SHALL BE PERFORMED ON JOB SITE.
 - DUE AND PROPER CARE SHALL BE TAKEN TO REMOVE OUTDRILLED COUPLERS FROM PIPING DURING THE WELDING PROCESS.
 - THREADS AND GROOVES FOR EACH TYPE OF FITTING SHALL BE CUT OR ROLLED TO CONFORM WITH THE FITTINGS MANUFACTURERS LISTED REQUIREMENT.
- INSTALLATION:
 - INSTALLATION SHALL BE PERFORMED BY EXPERIENCED FIRE SPRINKLER WORKMEN.
 - INSTALLATION SHALL CONFORM TO NFPA 13 STANDARD.
- SPECIAL NOTES:
 - WATER SHIELDS, WHEN REQUIRED TO LIMIT SPRINKLER DISCHARGE ON ELECTRICAL EQUIPMENT, PANELS, AND SWITCH GEAR, SHALL BE PROVIDED AND INSTALLED BY OTHERS.
 - CENTRAL STATION AND/OR EVACUATION ALARM SYSTEM SHALL BE PROVIDED AND INSTALLED BY OTHERS.
 - SWITCHES AND BELLS FURNISHED AND MOUNTED BY SPRINKLER CONTRACTOR SHALL BE WIRED AND CONNECTED BY OTHERS AND IF REQUIRED TO CONNECT TO BUILDING'S ALARM SYSTEM IT SHALL ALSO BE EXTENDED WITH WIRING TO THE MONITORING ALARM SYSTEM BY OTHERS.

GENERAL NOTES
1/8" = 1'-0"

1 LOWER LEVEL SPRINKLER PLAN
1/8" = 1'-0"



NO --- SCALE
1 --- Sammy Super Screw (DSTR 516)
1 --- 3/8" All Thread Rod
1 --- Ring

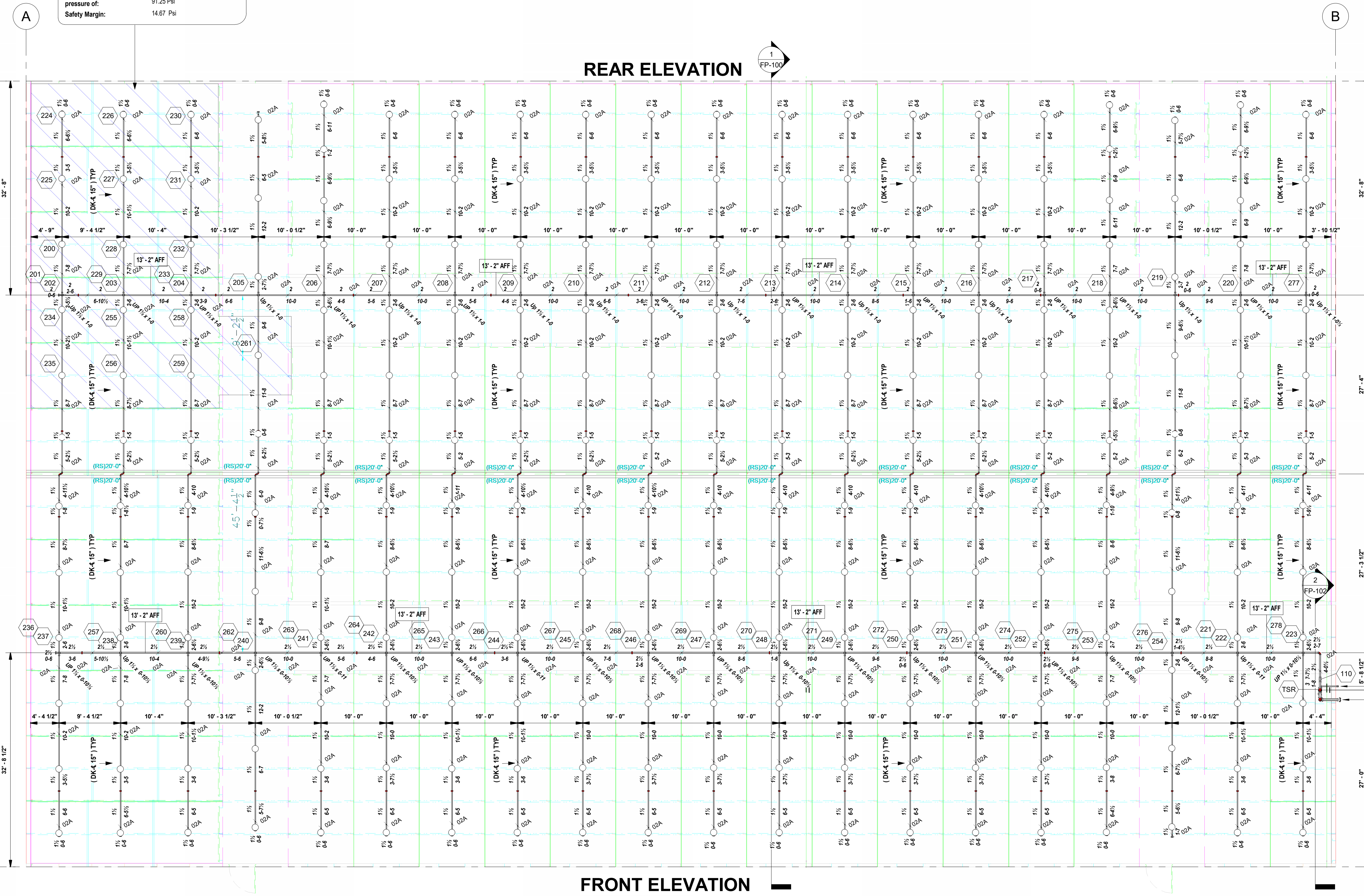
IMPORTANT
In locations that are subject to freezing conditions, it is the owner's responsibility to provide heat throughout areas protected by wet pipe sprinkler systems and in enclosures for dry pipe, deluge or other types of valves controlling water supplies to sprinkler systems.

This drawing including all information and design concept herein contained is the property of Carolina Fire Protection Company, Inc. and is loaned upon express conditions that the same be returned to CFP, Inc. upon request; all information contained herein shall be treated as secret, and confidential; no reproduction of this drawing or any part thereof shall be made without written consent of CFP, Inc.

CONTRACT RESPONSIBILITIES	
ITEM	C.F.P. / OTHERS
STREET WATER CONNECTION	N/A
UNDERGROUND WATER MAINS	N/A
EXCAVATIONS	N/A
BACKFILL	N/A
WIRING	N/A
PAINTING	N/A

SYMBOLS	
	CEILING HT. ABOVE REF.
	CL OF PIPE BELOW BOD
	CL OF PIPE ABOVE REF.
	FIRE HOSE ASSEMBLY
	FLOW SWITCH (FS)
	MONITOR SWITCH
	HYDRAULIC REF. POINT
	LINE DESIGNATION
	MAIN DESIGNATION
	ALARM VALVE (ALV)
	DRY PIPE VALVE
	UNION
	GROOVED COUPLING (GC)
	SCREWED CAP
	GROOVED CAP
	SCREWED PLUG
	FLANGED CONNECTION
	GATE VALVE (SEE NOTES)
	WATER MOTOR GONGS (W/MG)
	FIRE DEPT CONN (STANDARD)
	FIRE DEPT CONN (FLUSH)
	BUTTERFLY VALVE
	KEY GATE SECTIONAL VALVE
	WAFAER CHECK VALVE
	SWING CHECK VALVE
	SYSTEM RISER
	INSPECTOR'S TEST
	GLOBE VALVE
	ANGLE VALVE
	ELECTRIC BELL
	WATER MOTOR GONGS (W/MG)
	FIRE DEPT CONN (STANDARD)
	FIRE DEPT CONN (FLUSH)
	BUTTERFLY VALVE
	KEY GATE SECTIONAL VALVE
	WAFAER CHECK VALVE
	SWING CHECK VALVE
	SYSTEM RISER
	INSPECTOR'S TEST
	GLOBE VALVE
	ANGLE VALVE
	ELECTRIC BELL
	WATER MOTOR GONGS (W/MG)
	FIRE DEPT CONN (STANDARD)
	FIRE DEPT CONN (FLUSH)
	BUTTERFLY VALVE
	KEY GATE SECTIONAL VALVE
	WAFAER CHECK VALVE
	SWING CHECK VALVE
	SYSTEM RISER
	INSPECTOR'S TEST
	GLOBE VALVE
	ANGLE VALVE
	ELECTRIC BELL
	WATER MOTOR GONGS (W/MG)
	FIRE DEPT CONN (STANDARD)
	FIRE DEPT CONN (FLUSH)
	BUTTERFLY VALVE
	KEY GATE SECTIONAL VALVE
	WAFAER CHECK VALVE
	SWING CHECK VALVE
	SYSTEM RISER
	INSPECTOR'S TEST
	GLOBE VALVE
	ANGLE VALVE
	ELECTRIC BELL
	WATER MOTOR GONGS (W/MG)
	FIRE DEPT CONN (STANDARD)
	FIRE DEPT CONN (FLUSH)
	BUTTERFLY VALVE
	KEY GATE SECTIONAL VALVE
	WAFAER CHECK VALVE
	SWING CHECK VALVE
	SYSTEM RISER
	INSPECTOR'S TEST
	GLOBE VALVE
	ANGLE VALVE
	ELECTRIC BELL
	WATER MOTOR GONGS (W/MG)
	FIRE DEPT CONN (STANDARD)
	FIRE DEPT CONN (FLUSH)
	BUTTERFLY VALVE
	KEY GATE SECTIONAL VALVE
	WAFAER CHECK VALVE
	SWING CHECK VALVE
	SYSTEM RISER
	INSPECTOR'S TEST
	GLOBE VALVE
	ANGLE VALVE
	ELECTRIC BELL
	WATER MOTOR GONGS (W/MG)
	FIRE DEPT CONN (STANDARD)
	FIRE DEPT CONN (FLUSH)
	BUTTERFLY VALVE
	KEY GATE SECTIONAL VALVE
	WAFAER CHECK VALVE
	SWING CHECK VALVE
	SYSTEM RISER
	INSPECTOR'S TEST
	GLOBE VALVE
	ANGLE VALVE
	ELECTRIC BELL
	WATER MOTOR GONGS (W/MG)
	FIRE DEPT CONN (STANDARD)
	FIRE DEPT CONN (FLUSH)
	BUTTERFLY VALVE
	KEY GATE SECTIONAL VALVE
	WAFAER CHECK VALVE
	SWING CHECK VALVE
	SYSTEM RISER
	INSPECTOR'S TEST
	GLOBE VALVE
	ANGLE VALVE
	ELECTRIC BELL
	WATER MOTOR GONGS (W/MG)
	FIRE DEPT CONN (STANDARD)
	FIRE DEPT CONN (FLUSH)
	BUTTERFLY VALVE
	KEY GATE SECTIONAL VALVE
	WAFAER CHECK VALVE
	SWING CHECK VALVE
	SYSTEM RISER
	INSPECTOR'S TEST
	GLOBE VALVE
	ANGLE VALVE
	ELECTRIC BELL
	WATER MOTOR GONGS (W/MG)
	FIRE DEPT CONN (STANDARD)
	FIRE DEPT CONN (FLUSH)
	BUTTERFLY VALVE
	KEY GATE SECTIONAL VALVE
	WAFAER CHECK VALVE
	SWING CHECK VALVE
	SYSTEM RISER
	INSPECTOR'S TEST
	GLOBE VALVE
	ANGLE VALVE
	ELECTRIC BELL
	WATER MOTOR GONGS (W/MG)
	FIRE DEPT CONN (STANDARD)
	FIRE DEPT CONN (FLUSH)
	BUTTERFLY VALVE
	KEY GATE SECTIONAL VALVE
	WAFAER CHECK VALVE
	SWING CHECK VALVE
	SYSTEM RISER
	INSPECTOR'S TEST
	GLOBE VALVE
	ANGLE VALVE
	ELECTRIC BELL
	WATER MOTOR GONGS (W/MG)
	FIRE DEPT CONN (STANDARD)
	FIRE DEPT CONN (FLUSH)
	BUTTERFLY VALVE
	KEY GATE SECTIONAL VALVE
	WAFAER CHECK VALVE
	SWING CHECK VALVE
	SYSTEM RISER
	INSPECTOR'S TEST
	GLOBE VALVE
	ANGLE VALVE
	ELECTRIC BELL
	WATER MOTOR GONGS (W/MG)
	FIRE DEPT CONN (STANDARD)
	FIRE DEPT CONN (FLUSH)
	BUTTERFLY VALVE
	KEY GATE SECTIONAL VALVE
	WAFAER CHECK VALVE
	SWING CHECK VALVE
	SYSTEM RISER
	INSPECTOR'S TEST
	GLOBE VALVE
	ANGLE VALVE
	ELECTRIC BELL
	WATER MOTOR GONGS (W/MG)
	FIRE DEPT CONN (STANDARD)
	FIRE DEPT CONN (FLUSH)
	BUTTERFLY VALVE
	KEY GATE SECTIONAL VALVE
	WAFAER CHECK VALVE
	SWING CHECK VALVE
	SYSTEM RISER
	INSPECTOR'S TEST
	GLOBE VALVE
	ANGLE VALVE
	ELECTRIC BELL
	WATER MOTOR GONGS (W/MG)
	FIRE DEPT CONN (STANDARD)
	FIRE DEPT CONN (FLUSH)
	BUTTERFLY VALVE
	KEY GATE SECTIONAL VALVE
	WAFAER CHECK VALVE
	SWING CHECK VALVE
	SYSTEM RISER
	INSPECTOR'S TEST
	GLOBE VALVE
	ANGLE VALVE
	ELECTRIC BELL
	WATER MOTOR GONGS (W/MG)
	FIRE DEPT CONN (STANDARD)
	FIRE DEPT CONN (FLUSH)
	BUTTERFLY VALVE
	KEY GATE SECTIONAL VALVE
	WAFAER CHECK VALVE
	SWING CHECK VALVE
	SYSTEM RISER
	INSPECTOR'S TEST
	GLOBE VALVE
	ANGLE VALVE
	ELECTRIC BELL
	WATER MOTOR GONGS (W/MG)
	FIRE DEPT CONN (STANDARD)
	FIRE DEPT CONN (FLUSH)
	BUTTERFLY VALVE
	KEY GATE SECTIONAL VALVE
	WAFAER CHECK VALVE
	SWING CHECK VALVE
	SYSTEM RISER
	INSPECTOR'S TEST
	GLOBE VALVE
	ANGLE VALVE
	ELECTRIC BELL
	WATER MOTOR GONGS (W/MG)
	FIRE DEPT CONN (STANDARD)
	FIRE DEPT CONN (FLUSH)
	BUTTERFLY VALVE
	KEY GATE SECTIONAL VALVE
	WAFAER CHECK VALVE
	SWING CHECK VALVE
	SYSTEM RISER
	INSPECTOR'S TEST
	GLOBE VALVE
	ANGLE VALVE
	ELECTRIC BELL
	WATER MOTOR GONGS (W/MG)
	FIRE DEPT CONN (STANDARD)
	FIRE DEPT CONN (FLUSH)
	BUTTERFLY VALVE
	KEY GATE SECTIONAL VALVE
	WAFAER CHECK VALVE
	SWING CHECK VALVE
	SYSTEM RISER
	INSPECTOR'S TEST
	GLOBE VALVE
	ANGLE VALVE
	ELECTRIC BELL
	WATER MOTOR GONGS (W/MG)
	FIRE DEPT CONN (STANDARD)
	FIRE DEPT CONN (FLUSH)
	BUTTERFLY VALVE
	KEY GATE SECTIONAL VALVE
	WAFAER CHECK VALVE
	SWING CHECK VALVE
	SYSTEM RISER
	INSPECTOR'S TEST
	GLOBE VALVE
	ANGLE VALVE
	ELECTRIC BELL
	WATER MOTOR GONGS (W/MG)
</	

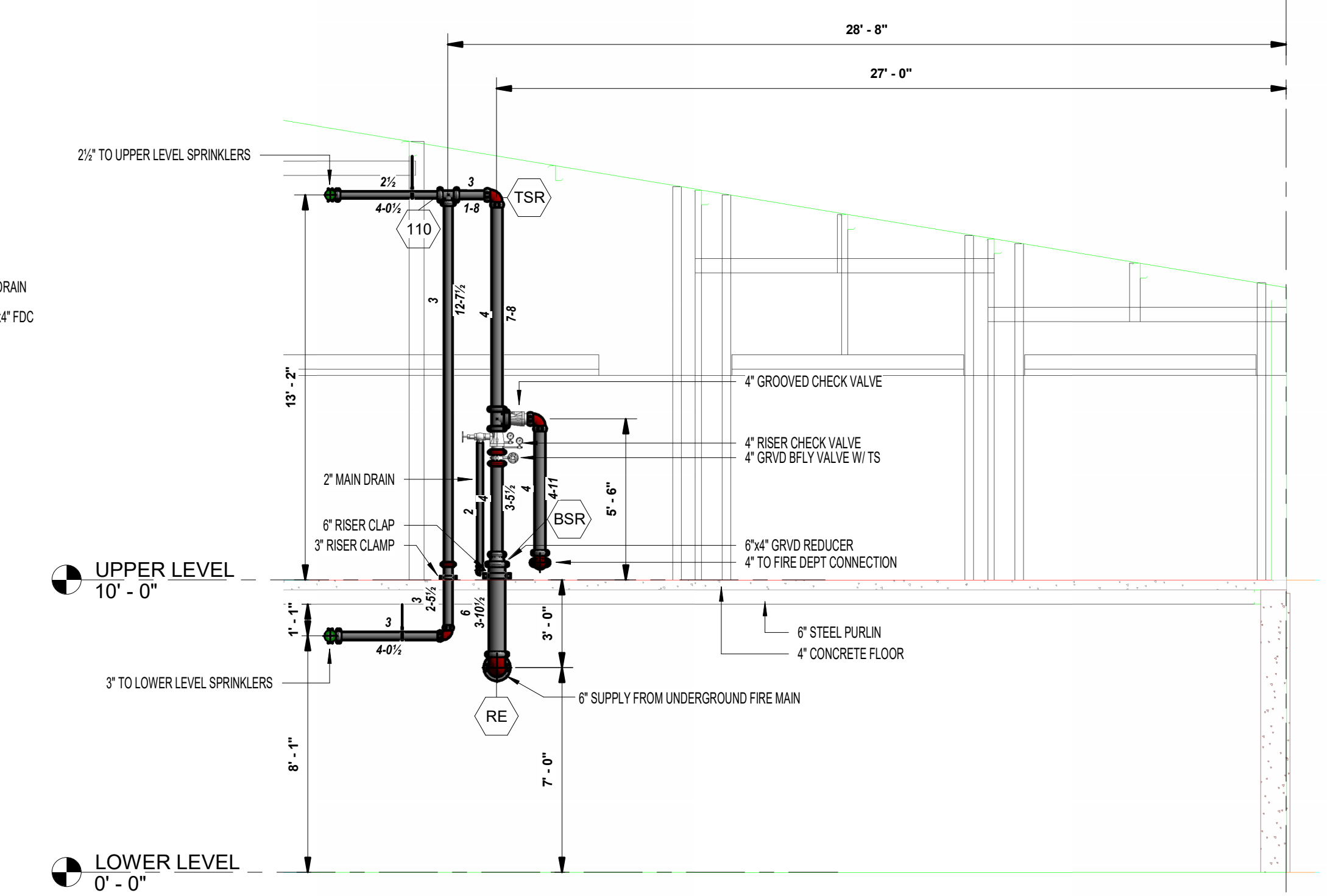
Fire Protection System Demand:
 Remote area number: 2
 Occupancy classification: OH-2 (STORAGE)
 Density: .20 Gpm/SqFt
 Area of application: 1500 SqFt
 No. of sprinklers calculated: 16
 Total Hose Streams: 250 GPM
 Total Additional Flow: 0 GPM
 Total water required (including hose streams): 628.19 GPM
 @ a required system pressure of: 91.25 Psi
 Safety Margin: 14.67 Psi



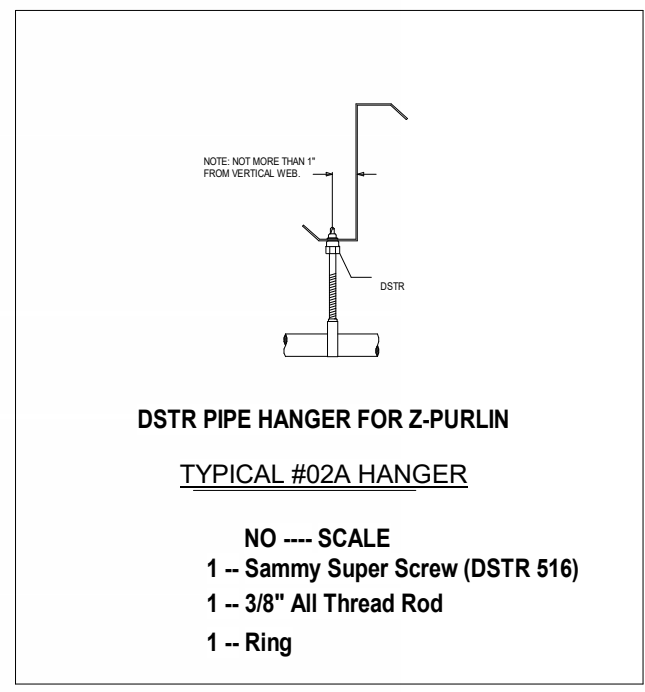
1 UPPER LEVEL SPRINKLER PLAN
 1/8" = 1'-0"

GENERAL NOTES

- PROJECT INFORMATION:
 - PROJECT NAME: BAUCOM BUSINESS PLAZA (STORAGE)
 - LOCATION: 11132 U.S. 401 N. FUQUAY VARINA, NC 27526
- BUILDING CONSTRUCTION: NEW CONSTRUCTION
 - EXTERIOR: STEEL WAINSCOT / MASONRY
 - INTERIOR: Z PURLINS ON STEEL BEAMS
 - FLOOR: CONCRETE
 - NUMBER OF FLOORS: 2 FLOOR
 - TOTAL SQUARE FEET: 48,000 SQFT
 - BUILDING HEIGHT: 30'-0"
- DESIGN MODIFIED PER NFPA 13 (2013)
 - TYPE OF SYSTEM: WET
 - MISCELLANEOUS STORAGE
 - STORAGE HEIGHT: 12'-0" MAX
 - DESIGNED TO ORDINARY HAZARD II, (20 GPM OVER THE MOST REMOTE 1500 SQFT) WITH 250 GPM HOSE ALLOWANCE
- WATER SUPPLY INFORMATION:
 - TEST BY: ENGINEERING PLANNING MANAGEMENT, INC.
 - TEST DATE AND TIME: 10-05-23 AT 9:48 AM
 - STATIC: 100.8 P.S.I.
 - RESIDUAL: 88 P.S.I.
 - FLOW: 1507 G.P.M.
 - SOURCE: FIRE HYDRANT ON 12" CITY MAIN @ 11132 US 01 N, FUQUAY VARINA, NC
- UNDERGROUND FIRE MAIN:
 - NEW 6" FIRE MAIN BY OTHERS, SHOWN FOR HYDRAULIC REFERENCE ONLY.
 - SPRINKLER CONTRACT STARTS AT A 6" CONNECTION INSIDE BUILDING
- PIPE AND FITTINGS:
 - RISER, FEED-MAIN, CROSS-MAIN
 - PIPE: SCHEDULE 10
 - FITTINGS: SHORT PATTERN GROOVED FITTINGS W/ RIGID COUPLINGS U.S.O.
 - CONNECTIONS: WELDED GROOVED OUTLETS, U.S.O.
 - GRID BRANCHLINES TO BE WELDED:
 - PIPE: 1 1/2" SCHEDULE 10 GROOVED, U.S.O.
 - FITTINGS: SHORT PATTERN GROOVED FITTINGS W/ RIGID COUPLINGS U.S.O.
 - ARMOVERS: 1" SCHEDULE 40
 - FITTINGS: STANDARD WEIGHT THREADED FITTINGS
 - SCHEDULE BRANCHLINES TO BE THREADED:
 - PIPE: SCHEDULE 40
 - FITTINGS: STANDARD WEIGHT THREADED FITTINGS
- FIRE SPRINKLER SYSTEM:
 - ALL MATERIALS AND INSTALLATION SHALL CONFORM TO NFPA
 - CONTRACTOR'S MATERIAL AND TEST CERTIFICATE FOR ABOVEGROUND PIPING SHALL BE COMPLETED AND COPIES PROVIDED TO THE OWNER AND AUTHORITY HAVING JURISDICTION AS DIRECTED.
- GENERAL MATERIALS:
 - ALL COMPONENTS AND EQUIPMENT OF THE FIRE SPRINKLER SYSTEM SHALL BE UL LISTED AND/OR FACTORY MUTUAL APPROVED.
 - ALL DEVICES SHALL BE INSTALLED IN CONFORMANCE WITH NFPA AND/OR MANUFACTURERS LITERATURE.
- SPRINKLER HEADS:
 - ALL SPRINKLER HEADS SHALL BE LISTED AND APPROVED FOR USE AS SPECIFIED PER NFPA 13 AND FM.
- HANGERS AND SUPPORTS:
 - HANGER ROD FOR PIPE 1-1/4" SHALL BE 3/8" MACHINE THREAD ROD
 - HANGER ROD FOR PIPE 6"-8" SHALL BE 1/2" MACHINE THREAD ROD
 - SPACING: Per NFPA-13
 - SCHEDULE 40 PIPE: 1" THRU 1-1/4" SHALL BE 12'-0" O.C. MAX.
 - SCHEDULE 40 PIPE: 1-1/2" THRU 8" SHALL BE 15'-0" O.C. MAX.
 - TRAPRAZE AND OTHER SPECIAL HANGERS SHALL CONFORM TO NFPA 13 FOR STYLE AND TYPE USED AND/OR THE SPECIAL LISTING APPROVED FOR THE FIRE SPRINKLER SYSTEM.
- VALVES AND SPECIAL EQUIPMENT:
 - ALL VALVES AND EQUIPMENT OF THE FIRE SPRINKLER SYSTEM SHALL BE UL LISTED AND/OR FACTORY MUTUAL APPROVED IN CONFORMANCE WITH NFPA 13 AND SPECIFICATIONS
 - FIRE DEPARTMENT CONNECTION
 - LOCATION: AT HOT BOX NEAR 2ND STREET (BY OTHERS)
 - FABRICATION:
 - FABRICATION SHALL BE PERFORMED BY EXPERIENCED WORKMEN.
 - WELDING SHALL BE BY A CERTIFIED WELDER AND COMPLY WITH A.W.S. 10.9 AR-3
 - NO WELDING SHALL BE PERFORMED ON JOIST.
 - DUE AND PROPER CARE SHALL BE TAKEN TO REMOVE CUT/DRIILLED COUPONS FROM PIPING DURING THE WELDING PROCESS.
 - THREADS AND GROOVES FOR EACH TYPE OF FITTING SHALL BE CUT OR ROLLED TO CONFORM WITH THE FITTINGS MANUFACTURERS LISTED REQUIREMENT.
 - INSTALLATION:
 - INSTALLATION SHALL BE PERFORMED BY EXPERIENCED FIRE SPRINKLER WORKMEN.
 - INSTALLATION SHALL CONFORM TO NFPA 13 STANDARD.
 - SPECIAL NOTES:
 - WATER SHIELDS, WHEN REQUIRED TO LIMIT SPRINKLER DISCHARGE ON ELECTRICAL EQUIPMENT, PANELS, AND SWITCH GEAR, SHALL BE PROVIDED AND INSTALLED BY OTHERS.
 - CENTRAL STATION ALARM AND/OR EVACUATION ALARM SYSTEM SHALL BE PROVIDED AND INSTALLED BY OTHERS.
 - CONTRACTOR'S MATERIAL AND TEST CERTIFICATE FOR ABOVEGROUND PIPING SHALL BE COMPLETED AND COPIES PROVIDED TO THE OWNER AND AUTHORITY HAVING JURISDICTION AS DIRECTED.
 - REQUIRED TO CONNECT TO BUILDING'S ALARM SYSTEM IT SHALL ALSO BE EXTENDED WITH WIRING TO THE MONITORING ALARM SYSTEM BY OTHERS.



2 SPRINKLER RISER DETAIL
 1/4" = 1'-0"



IMPORTANT
 In locations that are subject to freezing conditions, it is the owner's responsibility to provide heat throughout areas protected by wet pipe sprinkler systems and in enclosures for dry pipe, deluge or other types of valves controlling water supplies to sprinkler systems.
 This drawing including all information and design concept herein contained is the property of Carolina Fire Protection Company, Inc. and is loaned upon express conditions that the same be returned to CFP, Inc. upon request; all information contained herein shall be treated as secret, and confidential; no reproduction of this drawing or any part thereof shall be made without written consent of CFP, Inc.

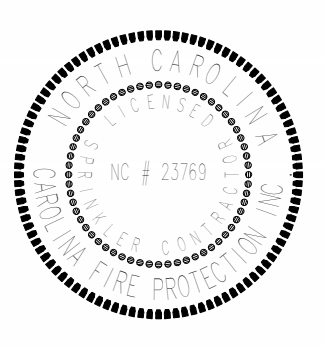
CONTRACT RESPONSIBILITIES	
ITEM	C.F.P. / OTHERS
STREET WATER CONNECTION	N/A
UNDERGROUND WATER MAINS	N/A
EXCAVATIONS	N/A
BACKFILL	N/A
WIRING	N/A
PAINTING	N/A

SYMBOLS	
	GATE VALVE/CHECK VALVE
	FIRE HOSE ASSEMBLY
	FIRE DEPT CONN (STANDARD)
	FIRE DEPT CONN (FLUSH)
	BUTTERFLY VALVE
	ALARM VALVE (ALT)
	DRY PIPE VALVE
	WAFFER CHECK VALVE
	SWING CHECK VALVE
	SYSTEM RISER
	INSPECTOR'S TEST GLOBE VALVE
	FLANGED CONNECTION
	ELECTRIC BELL
	WATER MOTOR GONGS (W/MG)
	FIRE DEPT CONN (STANDARD)
	FIRE DEPT CONN (FLUSH)
	KEY GATE SECTIONAL VALVE
	THRUST BLOCK
	24 WAY SEISMIC BRACING
	LOW/HIGH ELEVATION CHANGE IN PIPE
	ANGLE VALVE

ABBREVIATIONS	
BOE	Bottom of Beam
BOB	Bottom of Deck
BOF	Bottom of Pipe
BTB	Below Top of Steel
DO	Drill
HO	Hose Valve
M.C.	Manhole and Cap
NC	Not in Contact
NS	Not to Scale
NU	Not Under
OB	Open Bar Joint
PO	Pressure Relief Valve
RM	Roof Member
SP	Support
TOB	Top of Beam
TOP	Top of Pipe
TOS	Top of Steel
UNC	Unless Noted Otherwise

SYSTEM TYPE	
WET	<input type="checkbox"/> DELUGE <input type="checkbox"/>
DRY	<input type="checkbox"/> PREACTION <input type="checkbox"/>

APPROVALS		
<input type="checkbox"/> ISO	OUT	IN
<input type="checkbox"/> IRI	OUT	IN
<input type="checkbox"/> FM	OUT	IN
<input type="checkbox"/>	OUT	IN



Sprinkler Schedule - Upper Level		
Image	Count	Description
	239	Vitaculic 1/2 Ordinary Upright Temperature - 155 Finish - B Quick Response Model - FL-QR SIN - V2704 K Factor - 5.6
Total Number of Sprinklers - 239		



CONTRACT NAME: BAUCOM BUSINESS PLAZA (STORAGE) 11132 U.S. 401 N. FUQUAY VARINA, NC 27526		CHECKED BY: Checker
CONTRACT WITH: Owner		DATE: Issue Date
DESCRIPTION: UPPER LEVEL SPRINKLER PLAN		SCALE: As indicated
PROJECT NUMBER: IFPDC-GB		DRAWN BY:
DRAWING NO: FP-102		

Revisions			
#	Date	Description	By