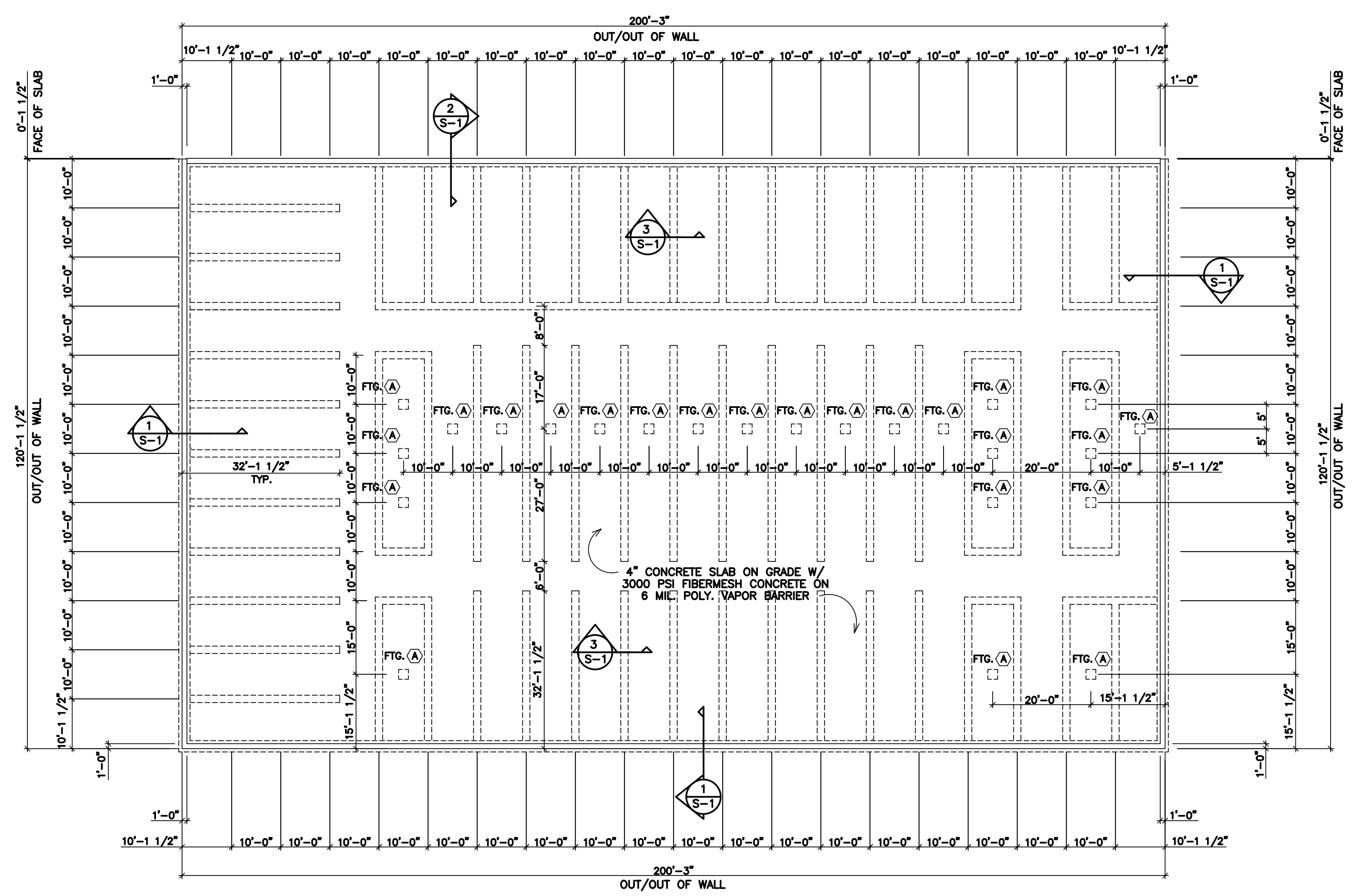


**C.H. MOSS, P.E.**  
 SOLE PROPRIETOR  
 P.O. BOX 28  
 COVINGTON, GA 30015  
 (770)-786-3163

NO	DATE	REVISION	BY

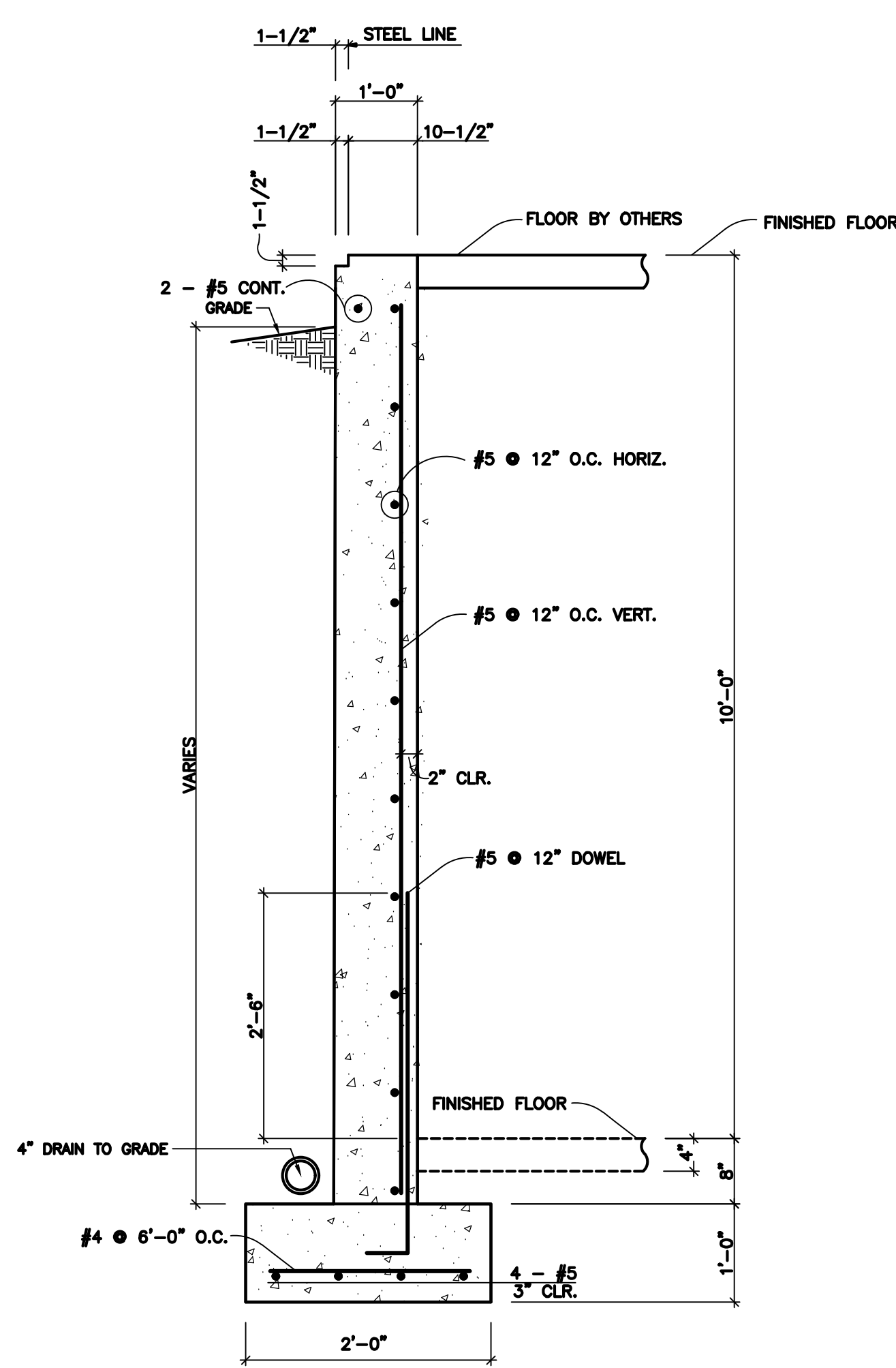
FOUNDATION PLAN FOR:  
**BAUCOM BUSINESS PLAZA**  
**CLIMATE CONTROL BLDG**  
 FUYQUAY VARINA, NC

DRAWING NUMBER	
3843	
SHEET	OF:
S-1	1

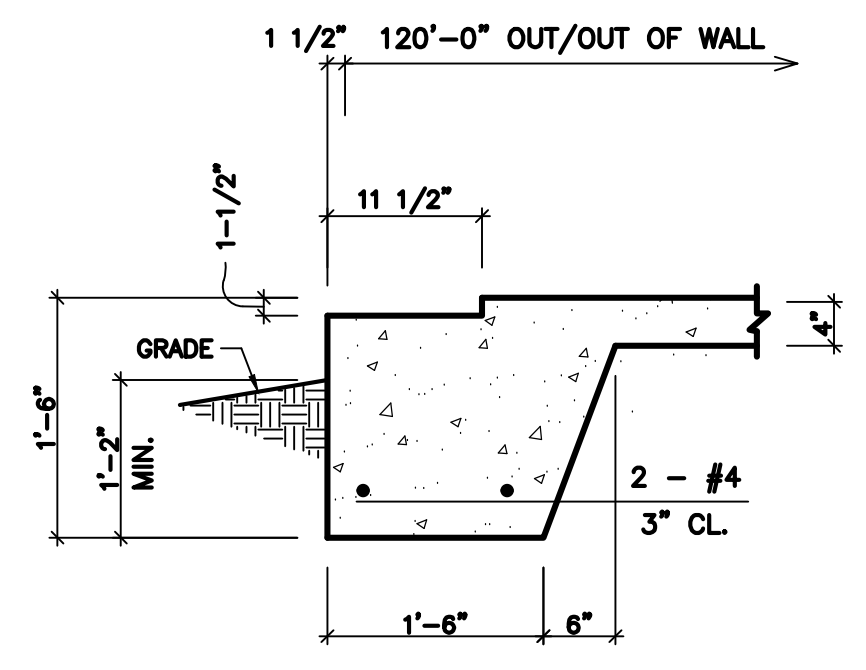


**FOUNDATION PLAN**  
 SCALE: 1/16" = 1'-0"

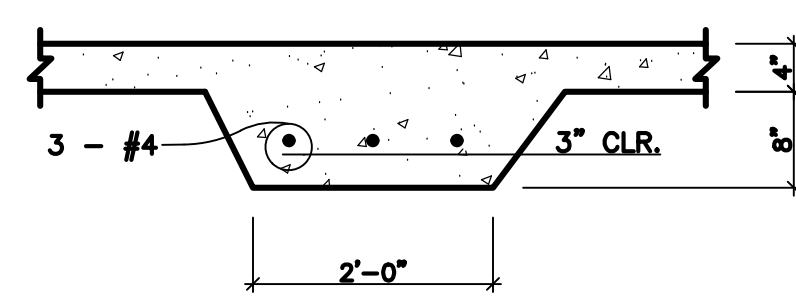
NOTE:  
 PROVIDE CONTROL JOINTS AT 15'-0" O.C. MAX.  
 EACH WAY NOT TO COINCIDE WITH THICKENED SLAB.



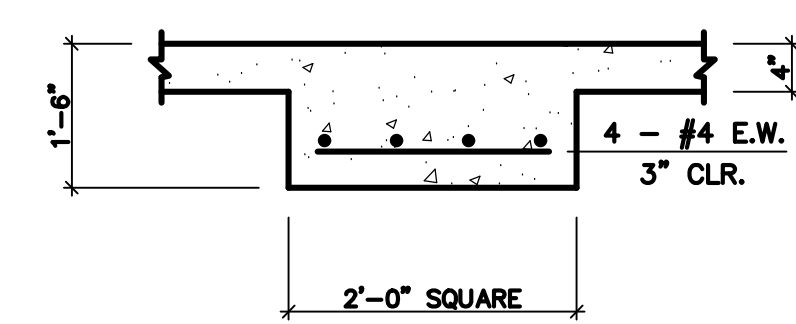
**SECTION 1**  
 SCALE: 3/4" = 1'-0"



**SECTION 2**  
 SCALE: 3/4" = 1'-0"



**SECTION 3**  
 SCALE: 3/4" = 1'-0"



**FOOTING "A" DETAIL**  
 SCALE: 3/4" = 1'-0"

**GENERAL NOTES**

- CONTRACTOR SHALL BE RESPONSIBLE FOR BRACING ALL WORK DURING CONSTRUCTION.
- FOOTINGS ARE DESIGNED FOR AN ALLOWABLE BEARING CAPACITY OF 2000 P.S.F.
- CONCRETE SHALL HAVE A MINIMUM 28 DAY COMPRESSIVE STRENGTH OF 3000 P.S.I. WITH A 4" MAXIMUM SLUMP. DETAILS NOT SHOWN SHALL BE ACCORDING TO ACI 318 AND ACI 301 SPECIFICATIONS FOR CONCRETE CONSTRUCTION.
  - REINFORCING STEEL SHALL BE ASTM A-615 GRADE 60 (TIES MAY BE GRADE 40)
  - W.W.F. SHALL BE ASTM A-185
  - MINIMUM LAP: #4 - 28"
  - #5 - 32"
  - MINIMUM COVER: 3" U.N.O.
- C.I. ON PLANS INDICATE CONTROL JOINT 1/8" x 1" DEEP SAWN WITHIN 24 HOURS AFTER PLACING CONCRETE. METAL JOINT MATERIAL MAY BE USED.
- FOUNDATION BASED ON REACTIONS FURNISHED BY PEAK STEEL BUILDINGS INC., JOB NO. 12227-33774, DATED 04/16/2021.