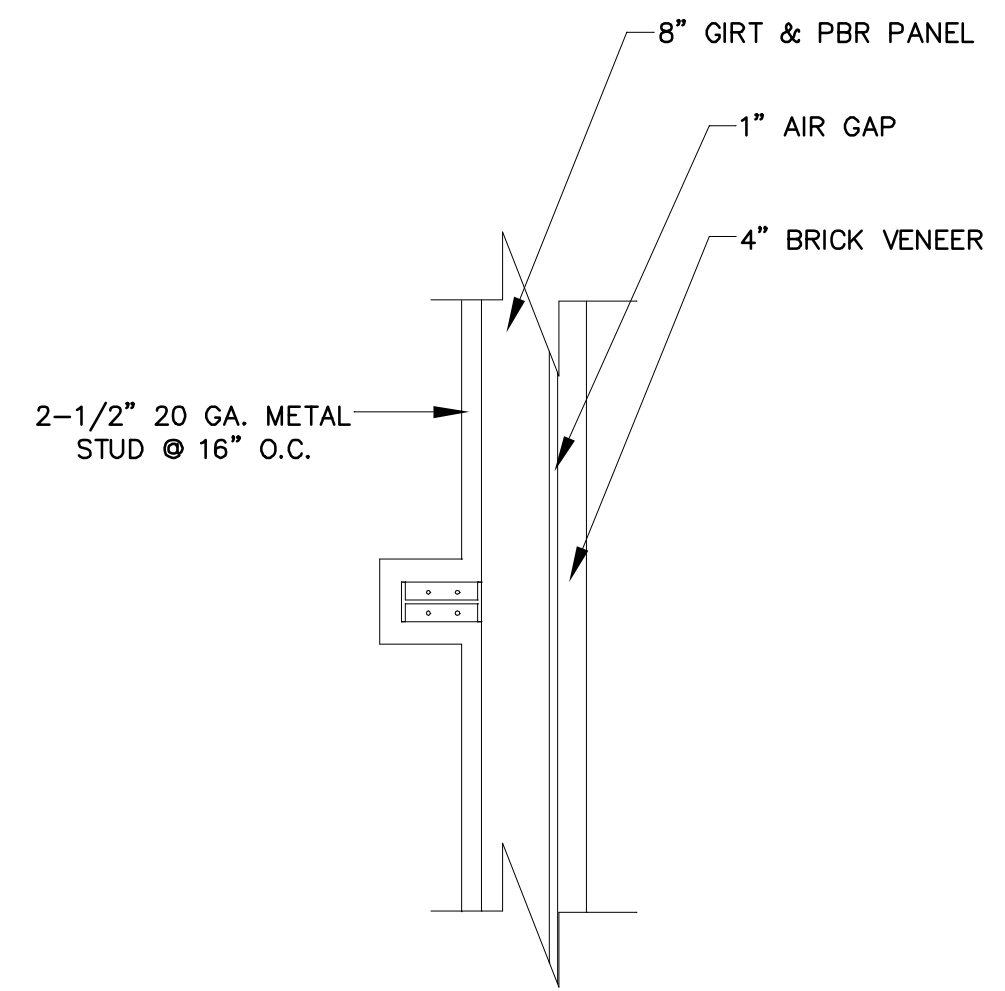
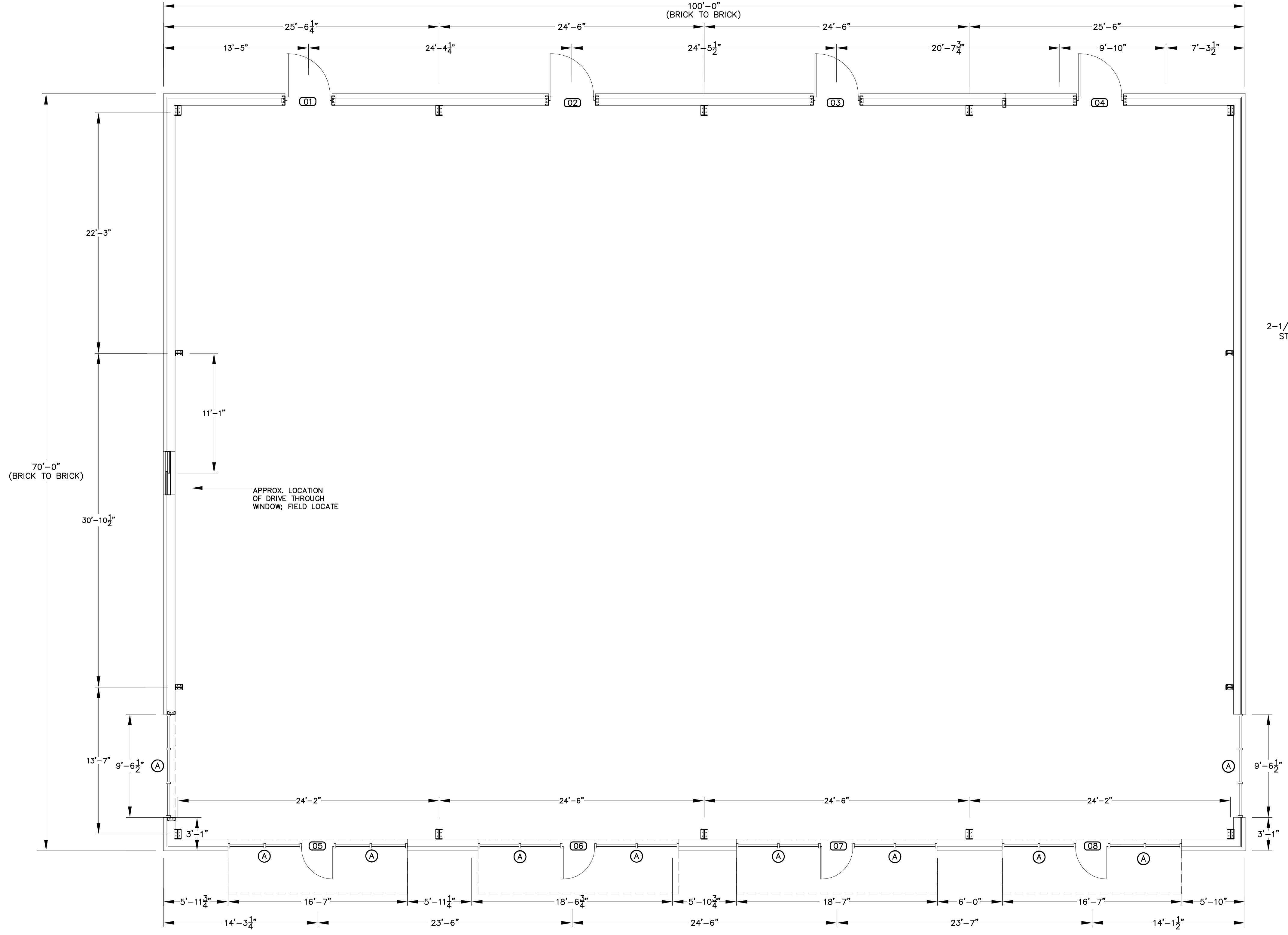
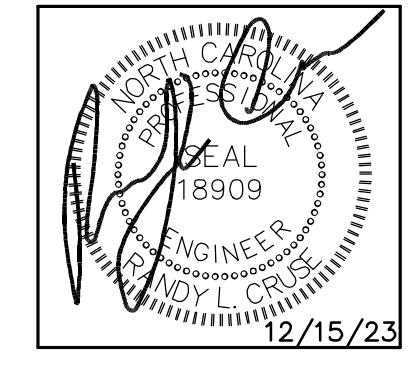


DOOR SCHEDULE				
DOOR NO.	DOOR SIZE			REMARKS
	WIDE	HIGH	THICK.	
01	4'-0"	7'-0"	1 3/4"	EXTERIOR METAL DOOR WITH HM FRAME
02	4'-0"	7'-0"	1 3/4"	EXTERIOR METAL DOOR WITH HM FRAME
03	4'-0"	7'-0"	1 3/4"	EXTERIOR METAL DOOR WITH HM FRAME
04	4'-0"	7'-0"	1 3/4"	EXTERIOR METAL DOOR WITH HM FRAME
05	3'-0"	7'-0"	1 3/4"	STOREFRONT EXT. GLASS DOOR WITH 2-8" TRANSOME
06	3'-0"	7'-0"	1 3/4"	STOREFRONT EXT. GLASS DOOR WITH 2-8" TRANSOME
07	3'-0"	7'-0"	1 3/4"	STOREFRONT EXT. GLASS DOOR WITH 2-8" TRANSOME
08	3'-0"	7'-0"	1 3/4"	STOREFRONT EXT. GLASS DOOR WITH 2-8" TRANSOME

WINDOW SCHEDULE				
MARK	WINDOW SIZE		REMARKS	HEADERS
	WIDE	HIGH		
Ⓐ	VARIES	10'-0"	STOREFRONT DOUBLE PANE WINDOW W/TEMPERED GLASS	

VERIFY WINDOW SIZES, TYPES, AND COLORS WITH OWNER BEFORE BEGINNING CONSTRUCTION

NOTE:
 LINTELS, SPANDREL BEAMS, AND ALL STRUCTURAL COMPONENTS WILL BE PROVIDED & DESIGNED BY PRE-ENGINEERED METAL BUILDING COMPANY, INCLUDING, BUT NOT LIMITED TO COMPONENTS REQUIRED ABOVE STOREFRONT OPENINGS.



PROPOSED WALL DETAIL
 SCALE: NOT TO SCALE

PROPOSED FLOOR PLAN
 SCALE: 3/16" = 1'-0"

PLANS FOR:
T&L COATS SHELL BUILDING
 BUILDING #1
 COATS, NORTH CAROLINA

REVISIONS	
NO.	

Cruse And Associates, P.A.
 414 E. Edgerton St. Suite 30804
 Raleigh, NC 27604
 PH: (919) 882-4429
 FAX: (919) 882-5182
 LICENSE NO.: C-1721

THESE DOCUMENTS ARE INSTRUMENTS OF SERVICE AND AS SUCH THESE DRAWINGS, DESIGNS, AND DESIGN CONCEPTS PRESENTED REMAIN THE PROPERTY OF THE ENGINEER. PUBLISH OR DUPLICATE THE DRAWINGS OR DESIGNS ONLY WITH THE WRITTEN PERMISSION OF THE ENGINEER.
 © COPY RIGHT

DATE	12-15-23
DRAWN BY	BAM
JOB NO.	23-32
SHEET NO.	F-1 OF 3