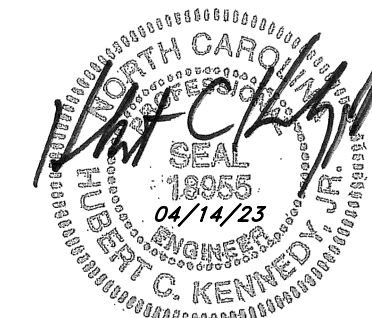




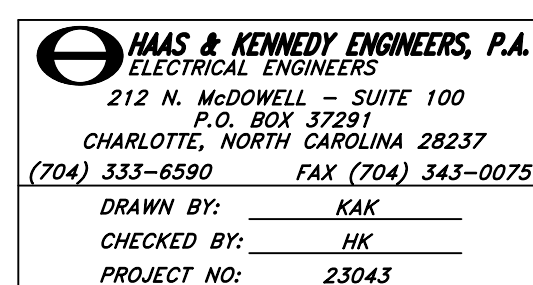
2600 Maitland Center Parkway
Suite #200
Maitland, FL 32751
P (407) 661-9100
F (407) 661-9101
c-p.com
Florida Corporate Certificate #FA C000528

COPYRIGHT © 2021 - ALL REPORTS, PLANS, SPECIFICATIONS, COMPUTER FILES, FIELD DATA, NOTES & OTHER DOCUMENTS ARE INSTRUMENTS OF SERVICE PREPARED BY CUHACI PETERSON (CP) AS INSTRUMENTS OF SERVICE. REMAIN THE PROPERTY OF CP. CP SHALL RETAIN ALL COMMON LAW, STATUTORY AND OTHER RESERVED RIGHTS, INCLUDING THE RIGHT TO REPRODUCE OR TO TRANSMIT IN ANY FORM OR BY ANY MEANS WITHOUT WRITTEN PERMISSION FROM CP IS A VIOLATION OF FEDERAL COPYRIGHT LAWS.

ARCHITECT/ENGINEER SEAL



CONSULTANT



FOOD LION

2110 EXECUTIVE DRIVE
SALISBURY, NC 28145
PH: 704-633-8250 FX: 704-636-4940

REVISION / ISSUE HISTORY

REV	DATE	REVISION / ISSUE NAME
04/14/2023	PERMIT	

PROJECT NO: 2220380
DRAWN BY: KAK

PERMIT SUB DATE: 04/14/2023
CHECKED BY: HCK

PROJECT: FOOD LION STORE #2594
3260 RAY ROAD
SPRING LAKE, NC 28390
2594FLMK23

CLIENT: FOOD LION
2110 EXECUTIVE DRIVE
SALISBURY, NC 28145
PH: 704-633-8250 F: 704-636-5940

SHEET TITLE: CRESCENT REPAIR NOTES

SHEET NO: 2594 E6.03_00
REV: E6.03

EMS	VA	SERVICE	WIRE	MOPD	CIR	R	CIR	MOPD	WIRE	SERVICE	VA	EMS
—	EXIST.	HOT WATER HEATER	EXIST.	35/2	1	R	2	35/2	EXIST.	HOT WATER HEATER 2	EXIST.	—
—	EXIST.		EXIST.		3	R	4		EXIST.		EXIST.	—
—	EXIST.	FANS	EXIST.	30/1	5	R	6	20/1	EXIST.	MECH RM LIGHTS	EXIST.	—
—	EXIST.	RECEPTACLES	EXIST.	20/1	7	R	8		—		—	—
—	EXIST.	CIRC PUMP	EXIST.	20/1	9	R	10	60/2	—	SPARE	—	—
—	—	SPARE	—	20/1	11	R	12	20/1	—	SPARE	—	—
—	—	SPACE ONLY	—	—	13	R	14	—	—	SPACE ONLY	—	—
—	—	SPACE ONLY	—	—	15	R	16	—	—	SPACE ONLY	—	—
—	—	SPACE ONLY	—	—	17	R	18	—	—	SPACE ONLY	—	—
—	—	SPACE ONLY	—	—	19	R	20	—	—	SPACE ONLY	—	—
—	—	SPACE ONLY	—	—	21	R	22	—	—	SPACE ONLY	—	—
—	—	SPACE ONLY	—	—	23	R	24	—	—	SPACE ONLY	—	—
—	—	SPACE ONLY	—	—	25	R	26	—	—	SPACE ONLY	—	—
—	—	SPACE ONLY	—	—	27	R	28	—	—	SPACE ONLY	—	—
—	—	SPACE ONLY	—	—	29	R	30	—	—	SPACE ONLY	—	—

LOCATION : ELECTRICAL AREA
PANEL MOUNTING : SURFACE
SERVICE : 120/208 V, 3PH , 4 WIRE, AC, FULL NEUTRAL
MAINS : 225 AMP M.L.O.
CABINET : EXISTING

EXISTING DEMAND LOAD = 4282 VA
ADDED LOAD = . VA
TOTAL = . VA
(AMPS)

NEW WORK SHOWN BOLD
EXISTING PANEL

D-47

SPECIAL REPAIR NOTES	
D-58 POST 58 - EMERGENCY LIGHTING FED FROM LA (#1), LB (#40, #42) EXIT LIGHTS & LIGHTS AT FRONT END WERE CONFIRMED TO NOT ILLUMINATE WHEN ABOVE CIRCUITS WERE DE-ENERGIZED. LIGHTS IN BOTH FRONT RESTROOMS WERE CONFIRMED TO NOT ILLUMINATE WHEN ABOVE CIRCUITS WERE DE-ENERGIZED. REPAIR, ALL EMERGENCY LIGHTING SHALL BE FED FROM A BRANCH CIRCUIT PANELBOARD, ON THE LINE SIDE OF ANY ENERGY MANAGEMENT CONTROLS, AND SHALL BE LABELED / SCHEDULED AS SUCH.	NOTED ON LIGHTING PLAN ON SHEET E1.01.
D-91 POST 91 - GENERAL ELECTRICAL NOTES, ADD TO PRINTS ALL DISTRIBUTION SECTIONS, BRANCH PANELS, MAIN BREAKERS AND DISCONNECTS SHALL HAVE PHENOLIC LABELS, (1 1/2" BLACK ON WHITE). MAIN BREAKER AND SAFETY DISCONNECT LABELING SHALL MATCH. ARC FLASH LABELS AND MECHANICAL DRAWINGS WILL DICTATE NAMING. LABELS CAN BE ORDERED FROM CD CONTROLS THE NATIONAL ACCOUNT BREAKER SUPPLIER. REVIEW ALL EXISTING SINGLE POLE BREAKER SIZING, CORRECT AS NEEDED PER CODE AND EQUIPMENT NAMEPLATE.	NOTED ON SHEET E5.01.
D-90 POST 90 - OVERSIZED BREAKERS: SIZE PER CONNECTED LOAD -PANEL E (#14), 16 AWG ON 20A BREAKER	REPLACE #16 AWG BRANCH CIRCUIT WIRE TO EQUIPMENT WITH NEW #12 AWG. NOTED ON PANEL SCHEDULE E ON SHEET E6.01.
D-62 POST 62 - UPDATE EGRESS LIGHTING X (7) UPDATE FIXTURES ON THE FOLLOWING DOORS: ENTRANCE LEFT, ENTRANCE RIGHT, SIDE LEFT, MECHANICAL ROOM, OSD, DRIVERS, SIDE RIGHT. WORK WITH OWNER ON FIXTURE SELECTION. REMOVE ALL REMOTE BATTERY PACKS.	NOTED ON LIGHTING PLAN ON SHEET E1.01.
D-87 POST 87 - CURRENT PHENOLIC LABELING NEEDED: - AHU-2 DISCONNECT (ABOVE MEAT PREP) - A/C COND ROOFTOP DISCONNECT (LABELED COND C) - RTU-1 ROOFTOP DISCONNECT (LABELED MDP3) - MDP3, BREAKER FOR PANEL PD (SHOULD BE SPARE)	NOTED ON POWER PLAN ON SHEET E1.02 AND ON PANEL SCHEDULE MDP3 ON SHEET E5.01.
D-53 POST 53 - NEXGEAR NEEDS TO BE LABELED WITH PHENOLIC TAG AS "MAIN SERVICE DISCONNECT" ON OUTSIDE OF ENCLOSURE ON CORRESPONDING SECTION OF GEAR.	NOTED ON SHEET E5.01.
D-48 POST 48 - REFRIGERATION CIRCUIT SIZING RACK A: 400 AMP BREAKER, (2) 3/0 AWG CU. RACK B: 300 AMP BREAKER, (2) 1/0 AWG CU. RACK A DISCONNECT: 400 AMP BREAKER, (2) 3/0 AWG CU. RACK B DISCONNECT: 300 AMP BREAKER, (2) 1/0 AWG CU. COND A: 40 AMP BREAKER, #6 AWG CU. FED FROM MDP2. COND B: 30 AMP BREAKER, #10 AWG CU. FED FROM MDP2. A/C COND: 250 AMP BREAKER, (2) 1/0 AWG CU. ENGINEER TO SIZE MAIN BREAKERS / CONDUCTORS PER MOPD / MCA REQUIREMENTS IN REVISED REFRIGERATION SUMMARY. SEE DISCONNECT INVENTORY FOR RELATIVE DATA.	RACK A: NO CHANGE. RACK B: NO CHANGE. RACK A DISCONNECT: NO CHANGE. RACK B DISCONNECT: NO CHANGE. COND A: NO CHANGE. COND B: NO CHANGE. A/C COND: NO CHANGE.
D-69 POST 69 - EXISTING NEUTRALS, CASE LIGHTING & FANS LIGHTS AND FANS ARE TO HAVE DEDICATED NEUTRALS. THIS ONLY APPLIES TO NEW AND RELOCATED CASE WORK.	NOTED ON REFRIGERATION PLAN ON SHEET E1.03.
D-47 POST 47 - PANEL SCHEDULE LABELING ALL SCHEDULES ARE TO BE 100% ACCURATE, ON CARD STOCK, TYPED, DATED, AND INSTALLED IN A CLEAR POCKET. EC SHALL GO THROUGH ALL EXISTING ELECTRICAL PANELS TO TRACE AND VERIFY ALL CIRCUITS FOR ACCURACY. RECEPTACLES AND LIGHTING ARE TO BE LABELED BY AREA/LOCATION. SALES FLOOR LIGHTING CIRCUITS ARE TO INCLUDE ROW NUMBER. CASE CIRCUITS ARE TO REFERENCE REFRIGERATION CIRCUITS. SPARE IS A BREAKER WITH NO WIRE. BLANK IS AN EMPTY SLOT. ALL WIRED AND ACTIVE BREAKERS SHALL BE PROPERLY SCHEDULED. NOTE: WIRED BREAKERS WITH NO ACTIVE LOAD / DEVICE SHALL BE LABELED AS SPARE, ENDING LOCATION. DO NOT REMOVE EXISTING PANEL SCHEDULES. ELECTRONIC COPIES OF ALL PANEL SCHEDULES ARE REQUIRED AT CLOSEOUT.	NOTED ON ALL PANEL SCHEDULES.
D-85, D-84, D-83, D-82, D-81, D-80, D-79, D-78, D-77, D-76, D-75, D-74, D-73 ALL PERTAIN TO INCORRECT PANEL SCHEDULE LABELING. SEE D-47 ABOVE.	NOTED ON ALL PANEL SCHEDULES (D-47).