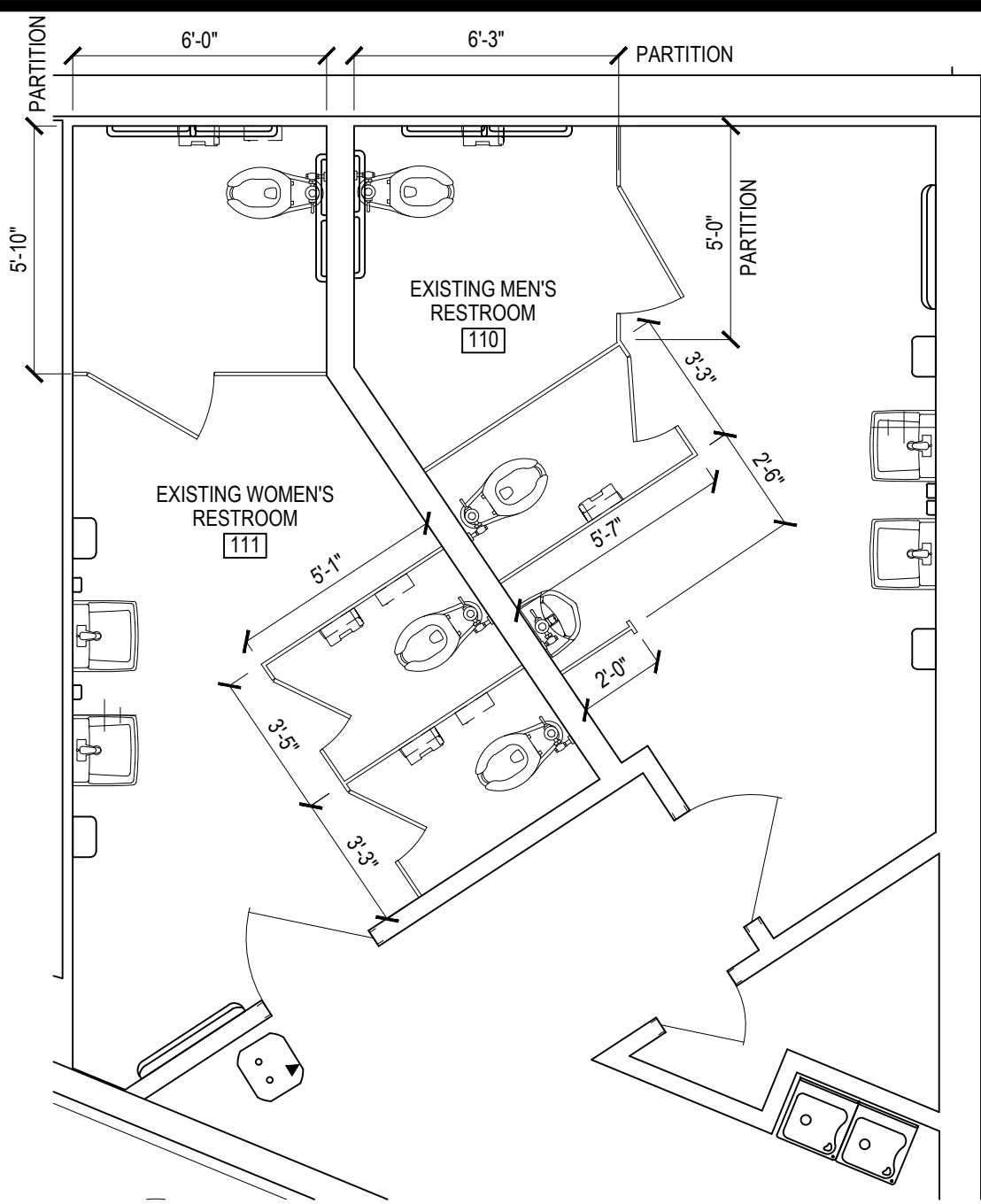


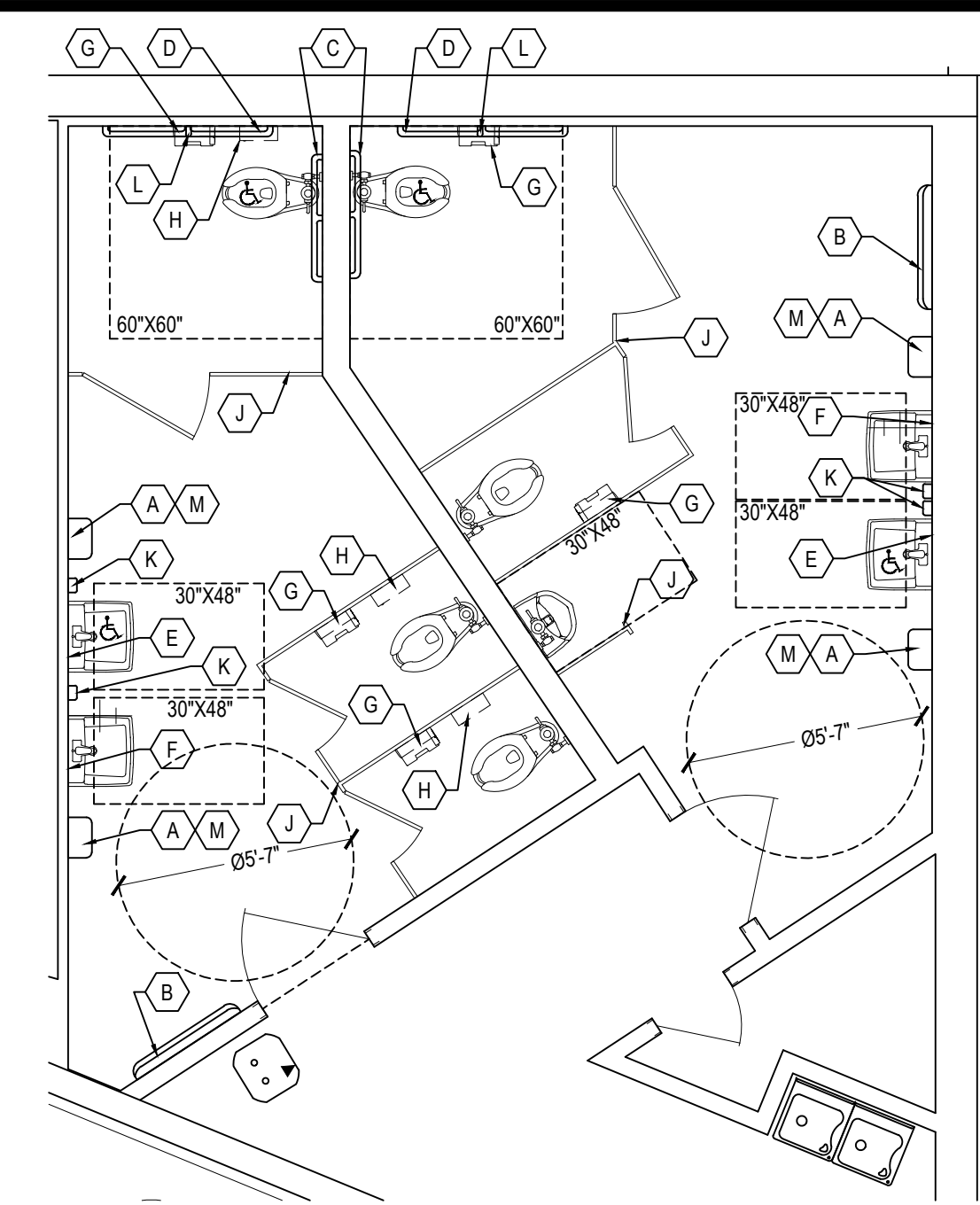
1 ENLARGED RESTROOM DEMO PLAN
A4.03 Scale 1/4"=1'-0"

DEMO KEY NOTES

- EXISTING BABY CHANGING STATION TO REMAIN.
- EXISTING HAND DRYER AND WALL GUARD TO REMAIN.
- EXISTING GRAB BARS TO REMAIN.
- EXISTING SOAP DISPENSER TO REMAIN.
- EXISTING PARTITIONS TO BE REMOVED.
- EXISTING SANITARY NAPKIN DISPOSAL TO BE RELOCATED.
- EXISTING TOILET PAPER DISPENSER TO BE RELOCATED.



2 ENLARGED RESTROOM DETAIL PLAN
A4.03 Scale 1/4"=1'-0"



3 ENLARGED RESTROOM ACCESSORIES PLAN
A4.03 Scale 1/4"=1'-0"

ACCESSORIES	TOILET ACCESSORIES
MAINTAIN AS IS	A HAND DRYER
MAINTAIN AS IS	B CHANGING TABLE - SEE NOTES 1 & 2 (HORIZONTAL TYPE)
MAINTAIN AS IS	C 36" GRAB BAR
MAINTAIN AS IS	D 42" GRAB BAR
MAINTAIN AS IS	E 18"x30" MIRROR (TILTED) - BOBRICK B-165 SEE NOTE #4
MAINTAIN AS IS	F 18"x30" MIRROR - BOBRICK B-165 SEE NOTE #4
RELOCATED	G TOILET PAPER DISPENSER, MOUNT BOTTOM SCA MODEL #66T @ +21 A.F.F.
RELOCATED	H SANITARY NAPKIN/TAMPON DISPOSAL, MOUNT TOP SCA MODEL #B-254 @ +28" A.F.F.
NEW	J TOILET PARTITIONS SEE NOTE #6 & #7
MAINTAIN AS IS	K SOAP DISPENSER (BY ECOLAB)
MAINTAIN AS IS	L 18" VERTICAL GRAB BAR
MAINTAIN AS IS	M HAND DRYER WALL GUARD
N/A	N BATTERY POWERED FLUSHMASTER SEE NOTE #9

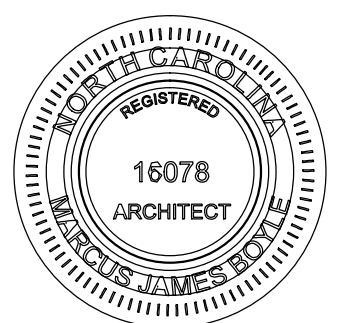
- RESTROOM GENERAL NOTES:**
- THE CHANGING TABLE SHALL BE MOUNTED IN ACCORDANCE WITH THE MANUFACTURER'S INSTALLATION MANUAL, ALL BUILDING CODES, REGULATIONS AND ORDINANCES RELATING TO CLEARANCE AND A.D.A. REGULATIONS.
 - CHANGING TABLE MANUFACTURED BY: SAFE STRAP COMPANY, INC. 105 WEST DEWEY AVENUE, BUILDING D SUITE 410, WHARTON, NJ 07885 CONTACT: TOLL FREE 1-800-356-7796 "DIAPER-DEPOT BASIC BABY CHANGING STATION" MODEL #1301, COLOR: POWDER GRAY. PHONE (973) 442-4623
 - HAND DRYER ORDERING INFORMATION ORDER FROM: GEORGE SCOTT ASSOCIATES CONTACTS: CURTIS SCOTT (704)376-4775. ORDER RECESSED KIT FOR MODIFICATION.
 - MIRRORS BY: BOBRICK WASHROOM EQUIPMENT INC. -SEE SPECIFICATIONS.
 - NEW TOILET FIXTURES & SINKS TO BE "WHITE" COLORED.
 - EACH TOILET PARTITION DOOR SHALL RECEIVE 2 COAT HOOKS, ONE HOOK SHALL BE MOUNTED @ 47" A.F.F. AND THE OTHER @ 59" A.F.F.
 - EACH TOILET PARTITION DOOR SHALL HAVE A PULL HANDLE MOUNTED ON BOTH SIDES OF THE DOOR @ 42" A.F.F.
 - CAULK FIXTURES IN RESTROOMS.
 - ANY WORK IN RESTROOMS TO BE SCHEDULED TO ALLOW FOR AT LEAST ONE OPEN AT ALL TIMES. COORDINATE WITH CONSTRUCTION MANAGER.
 - WHEN UPDATING WALL TILES REMOVE EXISTING SANITARY NAPKIN DISPENSER FROM WOMEN'S RESTROOM. REINSTALL AFTER NEW TILE WORK IS COMPLETE.
 - TOILET PAPER DISPENSER TO BE MOUNTED 48" A.F.F. AND 2'-6" OFF BACK WALL TO CENTERLINE OF OUTLET OF DISPENSER.
 - EXISTING FIXTURES AND TOILET ACCESSORIES REMOVED FOR INSTALLATION OF PORCELAIN WALL TILE ARE TO BE INSTALLED PER ADA COMPLIANCE.
 - GRAB BARS SHALL BE MOUNTED TO SUPPORT A FORCE OF 250 LBS. APPLIED @ ANY POINT IN ANY DIRECTION. PROVIDE & INSTALL WOOD BLOCKING IN WALL @ NEW TILE OR USE BOBRICK "WING-IT" FASTENERS @ EXISTING TILE.
 - PROVIDE LAVATORIES IN RESTROOMS WITH TRAP AND RISER INSULATION KIT.
 - WHEN BUILDING NEW WALLS, PROVIDE R-11 BATT SOUND INSULATION IN WALLS AND ABOVE CEILING IN RESTROOMS. COORDINATE WITH PARTITION TYPES. INSTALL INSULATION ABOVE CEILING IN EXISTING CONDITIONS, IF NOT EXISTING.
 - TOILET PARTITIONS BY: AMERICAN SANITARY CORPORATION, STAINLESS STEEL TYP. # 304-#4 FINISH
 - BATTERY POWERED AUTOMATIC FLUSH VALVE G2 OPTIMA PLUS BY SLOAN. SEE PLUMBING DWGS.
 - REMOVE AS NECESSARY FIXTURES AND ACCESSORIES. GC TO STORE FOR REUSE, COORDINATE REUSE OF ITEMS WITH CONSTRUCTION MANAGER.
 - SEE PLAN DETAIL 2 & 3 A4.03 & ELEVATIONS FOR LOCATION OF RELOCATED ITEMS. COORDINATE W/ PLBG. & ELEC. DWGS.
 - ALL NEW / RELOCATED FIXTURES & ACCESSORIES TO BE MOUNTED TO MEET ADA STANDARDS.



2600 Maitland Center Parkway
Suite #200
Maitland, FL 32751
P (407) 661-9100
F (407) 661-9101
c-p.com
Florida Corporate Certificate #AA C000526

COPYRIGHT © 2021 - ALL REPORTS, PLANS, SPECIFICATIONS, COMPUTER FILES, FIELD DATA, NOTES & OTHER DOCUMENTS ARE INSTRUMENTS OF SERVICE PREPARED BY CUHACI PETERSON, (CP) AS INSTRUMENTS OF SERVICE REMAIN THE PROPERTY OF CP. CP SHALL RETAIN ALL COMMON LAW, STATUTORY, AND OTHER RESERVED RIGHTS, INCLUDING THE COPYRIGHT THEREIN TO ANY USE OR REPRODUCTION OF THIS DOCUMENT WITHOUT WRITTEN PERMISSION FROM CP IS A VIOLATION OF FEDERAL COPYRIGHT LAWS.

ARCHITECT/ENGINEER SEAL
04/14/2023



MARCUS JAMES BOYLE
NC 16078

CONSULTANT

FOOD LION

2110 EXECUTIVE DRIVE
SALISBURY, NC 28145
PH: 704-633-8250 FX: 704-636-4940

REVISION / ISSUE HISTORY

REV	DATE	REVISION / ISSUE NAME
-	04/14/2023	PERMIT

PROJECT NO 2220380 DRAWN BY JB

PERMIT SUB DATE 04/14/2023 CHECKED BY RD

PROJECT FOOD LION STORE #2594

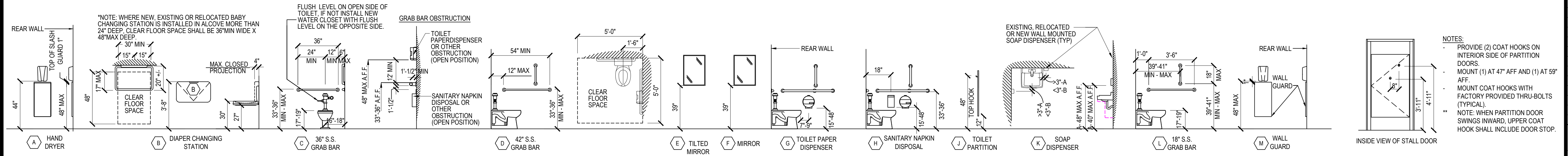
3260 RAY ROAD
SPRING LAKE, NC 28390
2594FLMK23

CLIENT FOOD LION

2110 EXECUTIVE DRIVE
SALISBURY, NC 28145
PH: 704-633-8250 F: 704-636-5940

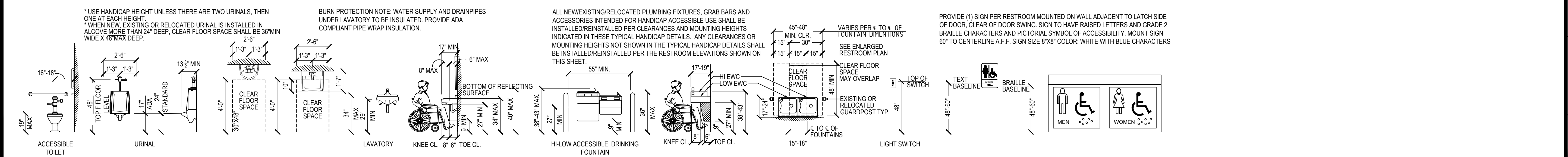
SHEET TITLE ENLARGED RESTROOM PLAN & DETAILS

SHEET NO 2594A4.03_00 REV
A4.03



4 RESTROOM ACCESSORIES & MOUNTED HEIGHTS
A4.03 Scale 1/4"=1'-0"

5 COAT HOOK MOUNTING DETAIL
A4.03 Scale 1/4"=1'-0"



6 PLUMBING FIXTURE MOUNTING HEIGHTS
A4.03 Scale 1/4"=1'-0"

7 ADA RESTROOM SIGNAGE
A4.03 Scale 1/4"=1'-0"

