

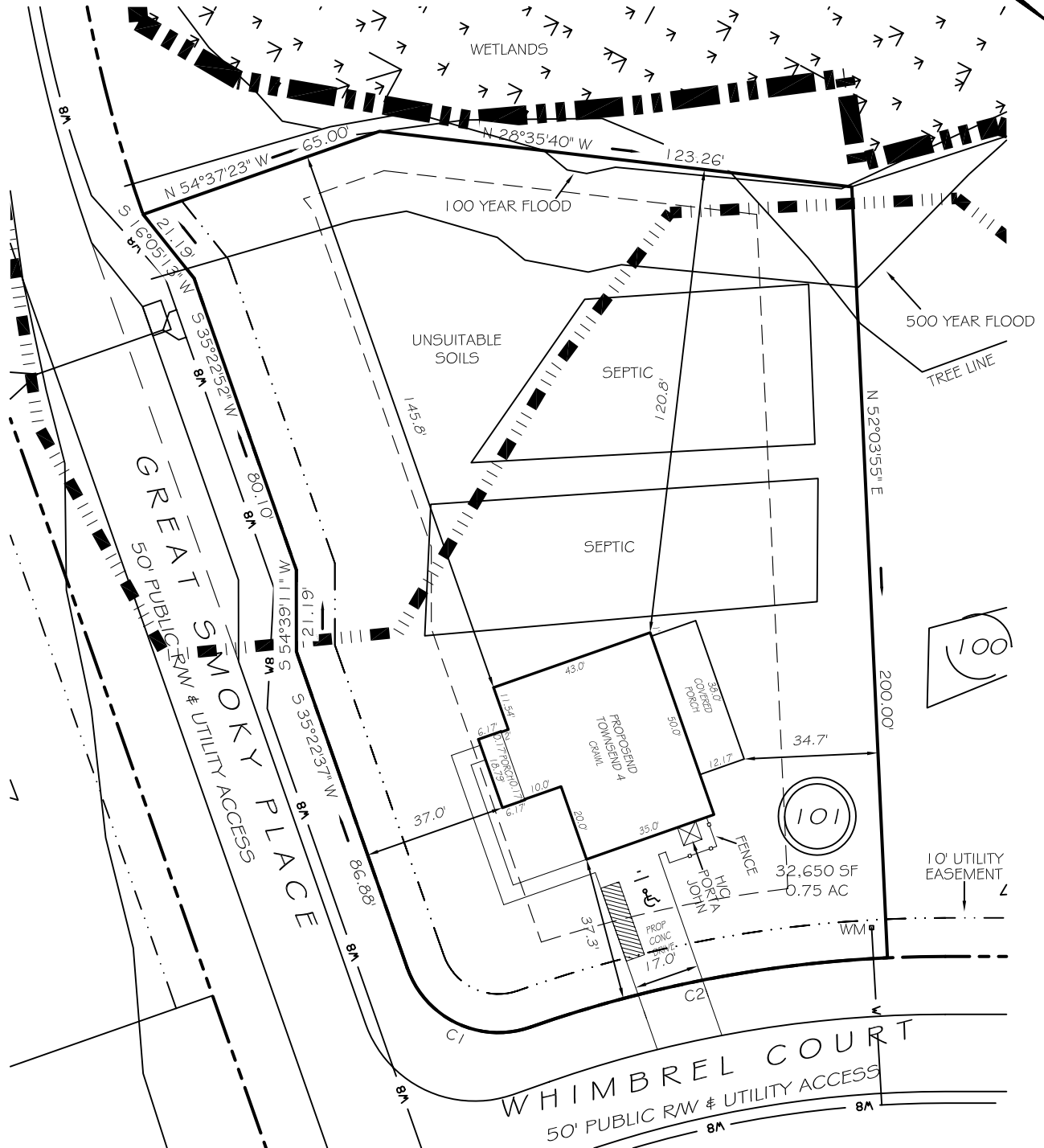
I, MICHAEL P. GRIFFIN, certify that under my direction and supervision this map was drawn from an actual field survey; that the error of closure of the survey as calculated by coordinates is 1: 10,000+; that the area shown hereon was calculated by coordinates.

Witness my hand and seal this day of MONTH 2023.

CA7

N/F  
 DRB GROUP NORTH CAROLINA, LLC  
 TRACT 1, PARCEL B OF  
 DB 4156, PG 2082  
 PORTION OF  
 DB 4156, PG 2092

BK 2023 PG 381  
 HARNETT CO. REGISTRY



REVISION: ROTATE 10/2/23  
 REVISION: ADD SEPTIC 8/17/23  
 REVISION: MODEL 8/17/23

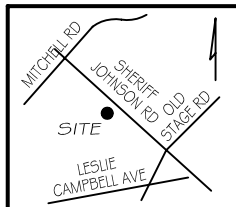
C1 R=25.00' L=39.27' N09°37'23"W 35.36'  
 C2 R=325.00' L=94.66' N46°16'44"W 94.33'

ZONING: RA-30  
 SETBACKS

FRONT 35'  
 REAR 25'  
 SIDE 10'  
 CORNER SIDE 20'

LEGEND

EIP	EXISTING IRON PIPE	FES	FLARED END SECTION
IPS	IRON PIPE SET	WM	WATER METER
R/W	RIGHT OF WAY	CO	CLEAN OUT
N/F	NOW OR FORMERLY	FH	FIRE HYDRANT
EIS	EXISTING IRON STAKE	CB	CATCH BASIN



**P R E L I M I N A R Y**  
 NOT FOR RECORDATION,  
 SALES OR CONVEYANCE



**GRIFFIN LAND SURVEYING, INC.**

P. O. BOX 148  
 FUQUAY-VARINA, NC 27526  
 (919) - 567-1963

PLOT PLAN  
 FOR

**DRB HOMES**

BLAKE POND SUBDIVISION

LOT 101

WHIMBREL COURT

LILLINGTON, N.C.

HARNETT COUNTY NEILL'S CREEK & GROVE TOWNSHIP

DRAWN BY **KDF**

DATE **8/17/23**

CHECKED BY **MPG**

SCALE **1" = 40'**