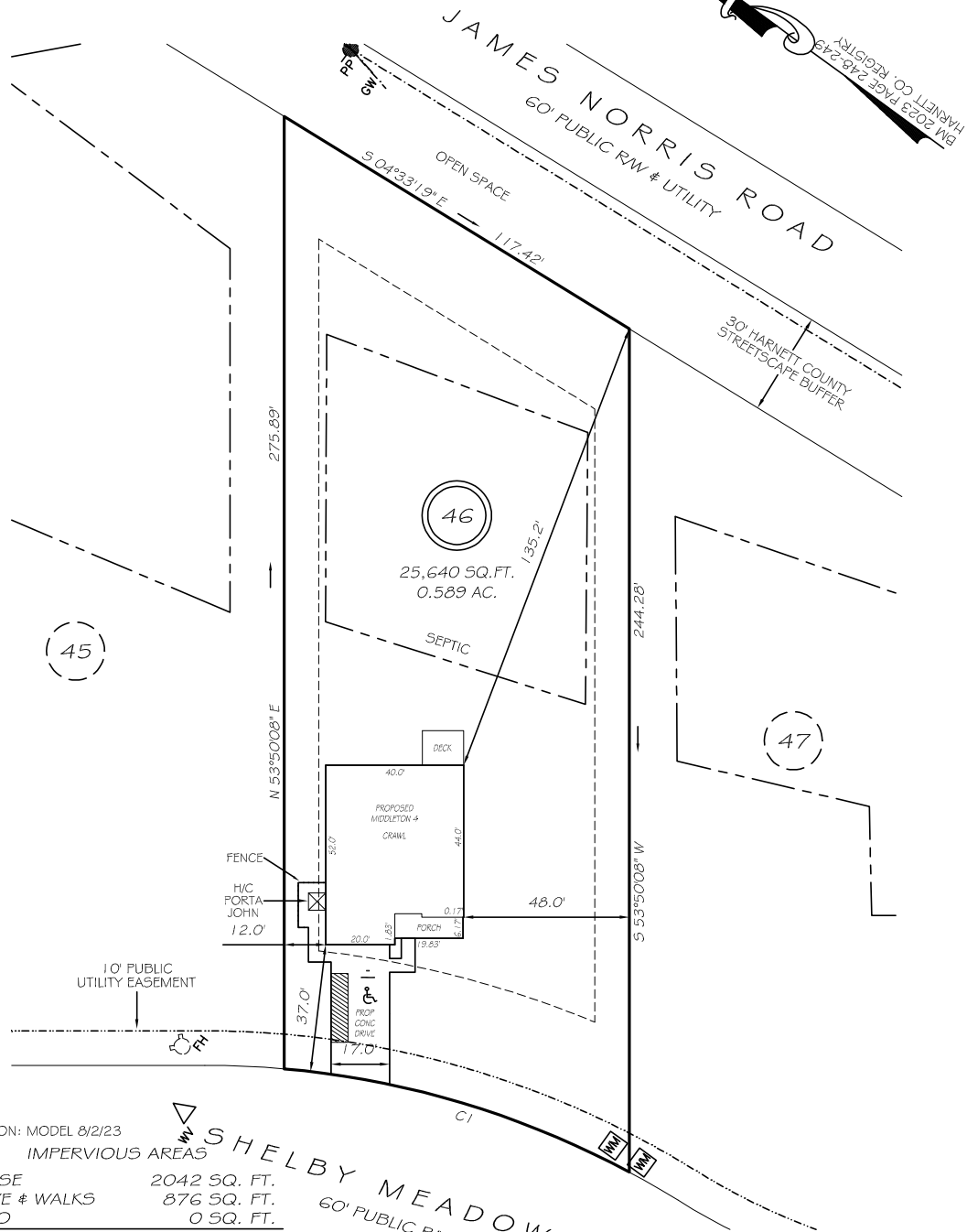


I, MICHAEL P. GRIFFIN, certify that under my direction and supervision this map was drawn from an actual field survey; that the error of closure of the survey as calculated by coordinates is 1: 10,000+; that the area shown hereon was calculated by coordinates.
 Witness my hand and seal this day of MONTH 2023.

ZONING RA-30
 SETBACKS
 FRONT 35'
 REAR 25'
 SIDE 10'
 CORNER SIDE 20'



REVISION: MODEL 8/2/23

IMPERVIOUS AREAS

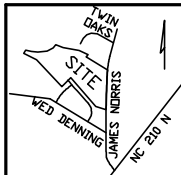
HOUSE	2042 SQ. FT.
DRIVE # WALKS	876 SQ. FT.
PATIO	0 SQ. FT.
TOTAL	2918 SQ. FT.
ALLOWED	4130 SQ. FT.

CI R=260.00' L=105.09' N19°30'19"W 104.38'

PRELIMINARY
 NOT FOR RECORDATION,
 SALES OR CONVEYANCE

LEGEND

EIP	EXISTING IRON PIPE	FES	FLARED END SECTION
IP5	IRON PIPE SET	WM	WATER METER
RAW	RIGHT OF WAY	CO	CLEAN OUT
N/F	NOW OR FORMERLY	FH	FIRE HYDRANT
EIS	EXISTING IRON STAKE	CB	CATCH BASIN



GLS GRIFFIN LAND SURVEYING, INC.
 P. O. BOX 148
 FUQUAY-VARINA, NC 27526
 (919) - 567 - 1963

LOT PLAN
 FOR
DRB HOMES
 HONEYCUTT HILLS
 LOT 46
 92 SHELBY MEADOW LANE
 ANGIER, N.C.
 HARNETT COUNTY BLACK RIVER TOWNSHIP

DRAWN BY KDF	DATE 6/28/23
CHECKED BY MPG	SCALE 1" = 40'