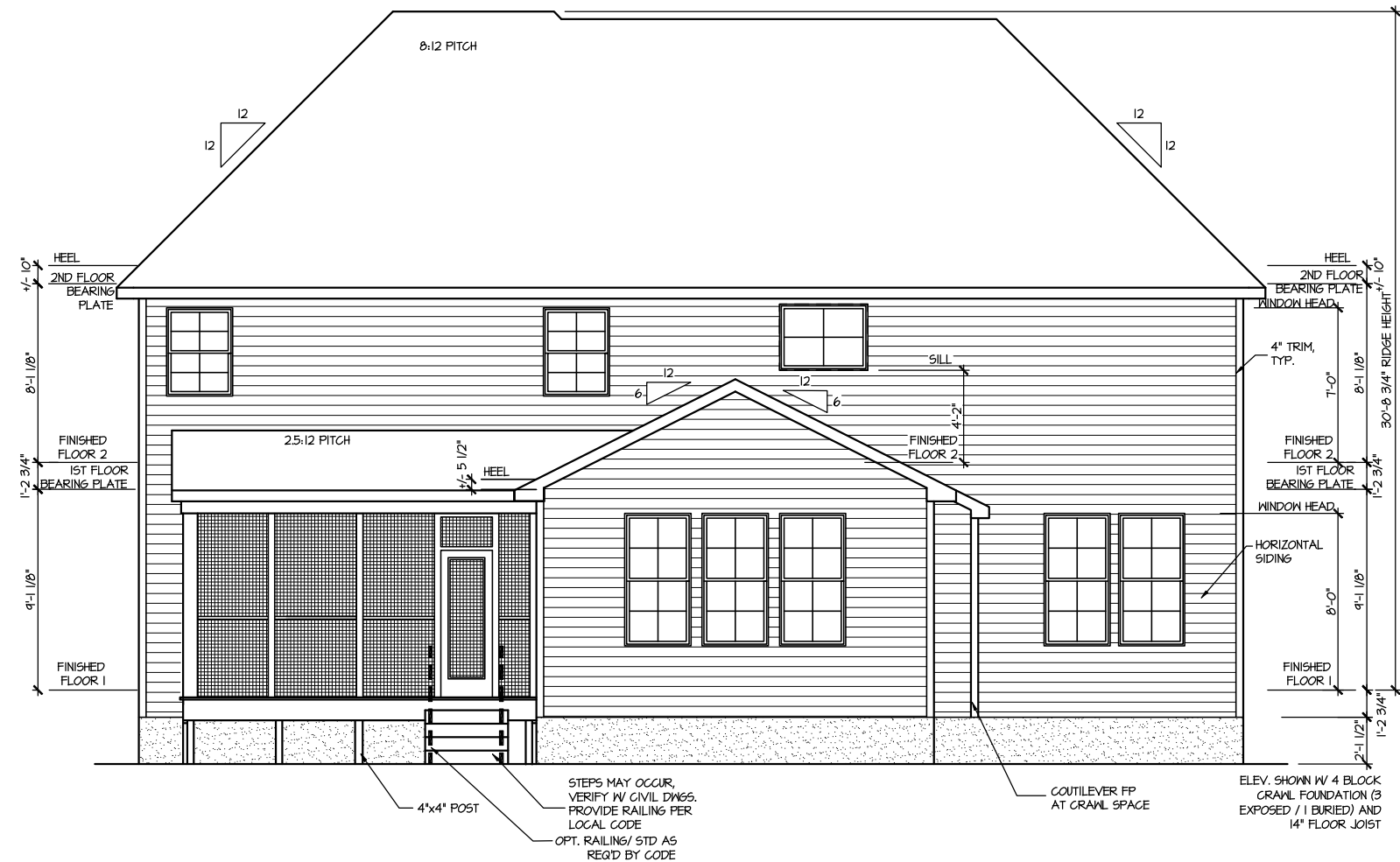


FRONT ELEVATION 4

SCALE: 1/8" = 1'-0"



REAR ELEVATION 4

SCALE: 1/8" = 1'-0"

MASTER PLAN INFORMATION	
REVISION	DATE
1 - RALE	09-16-19
UPDATED DATE	12-06-2021

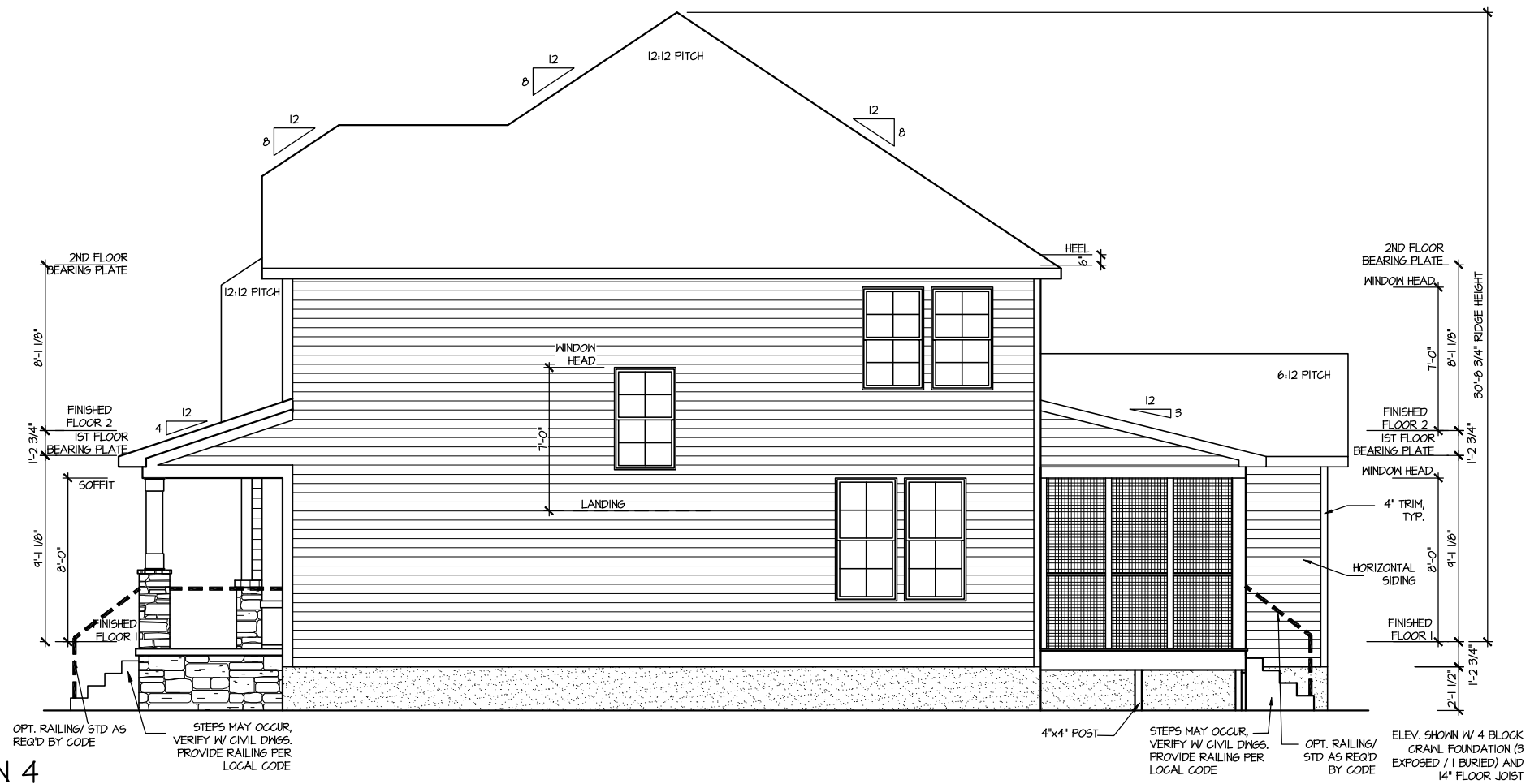
DRAWN BY: ITS
 DATE: 06/27/2023
 PLAN NO. 1635



HOUSE NAME: STONEFIELD
 DRAWING TITLE: FRONT & REAR ELEVATIONS

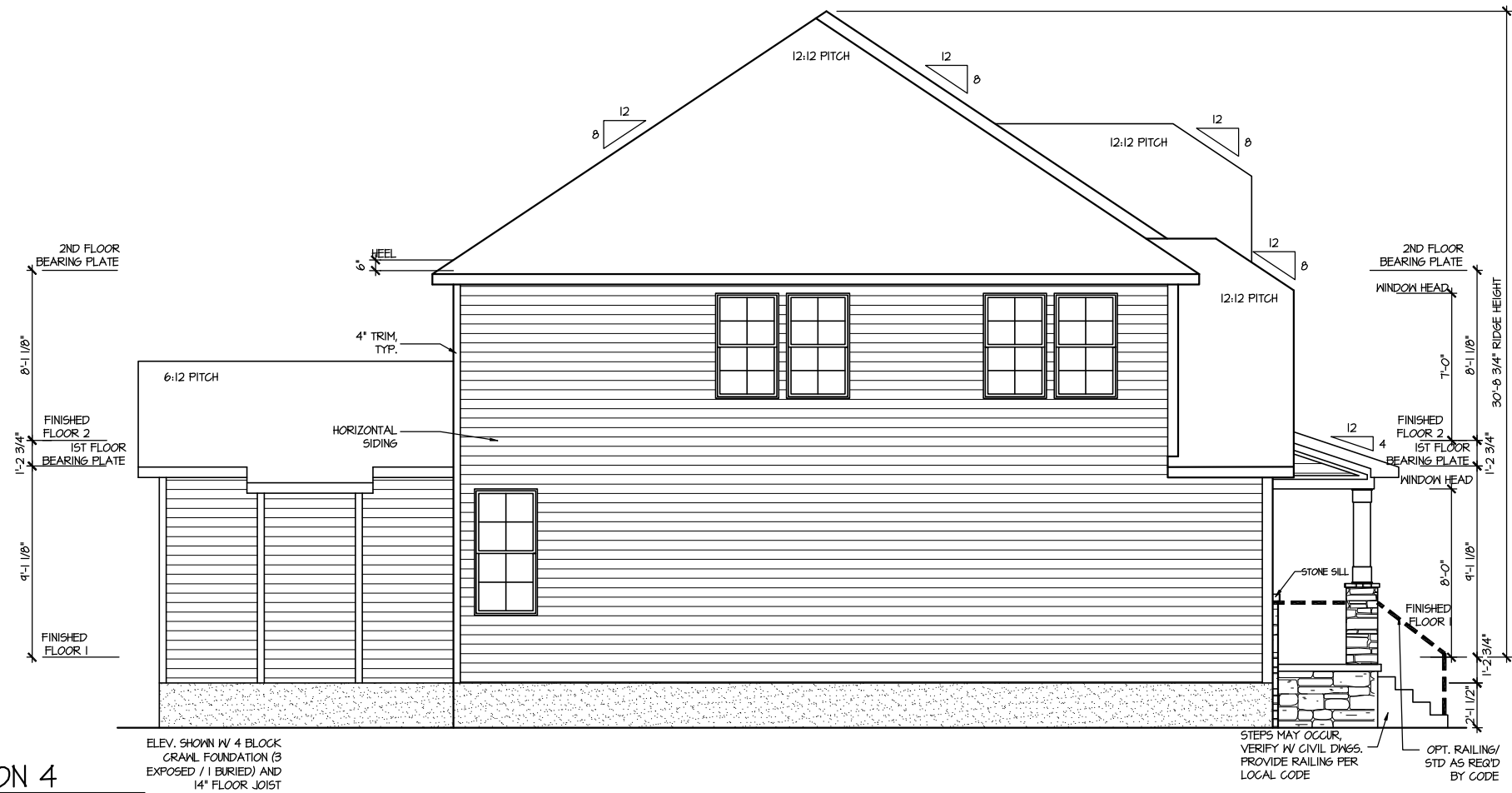
SHEET No. A.I

FILE: Lot_00.0047.dwg DATE: 6/27/2023 10:56 AM



RIGHT ELEVATION 4

SCALE: 1/8" = 1'-0"



LEFT ELEVATION 4

SCALE: 1/8" = 1'-0"

MASTER PLAN INFORMATION	
REVISION	DATE
1 - RALE	09-16-19
UPDATED DATE	12-06-2021

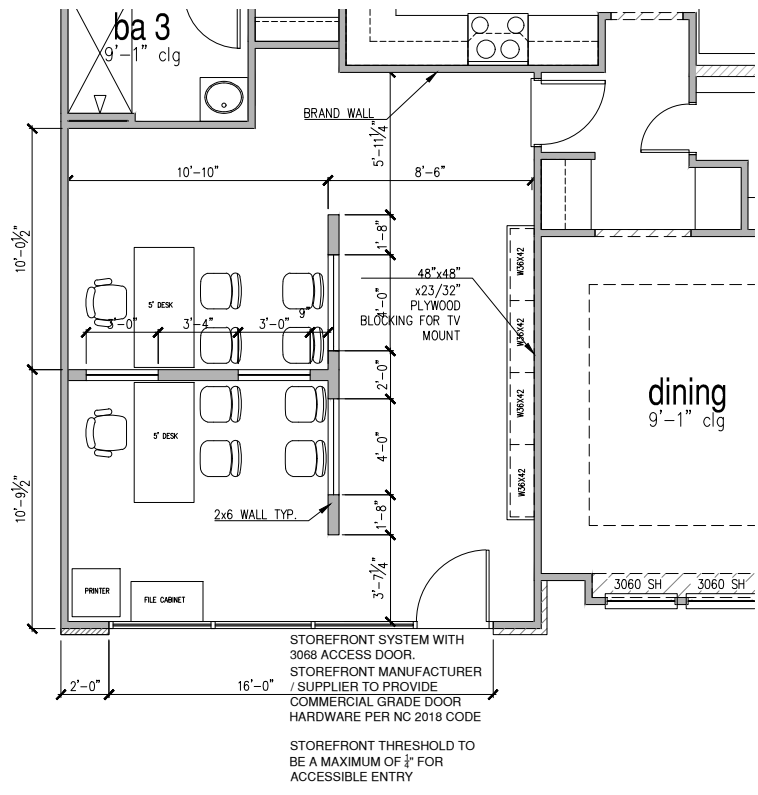
DRAWN BY:	ITS
DATE:	06/27/2023
PLAN NO.	1635



HOUSE NAME: STONEFIELD
 DRAWING TITLE: RIGHT & LEFT ELEVATIONS

SHEET No. A1.2

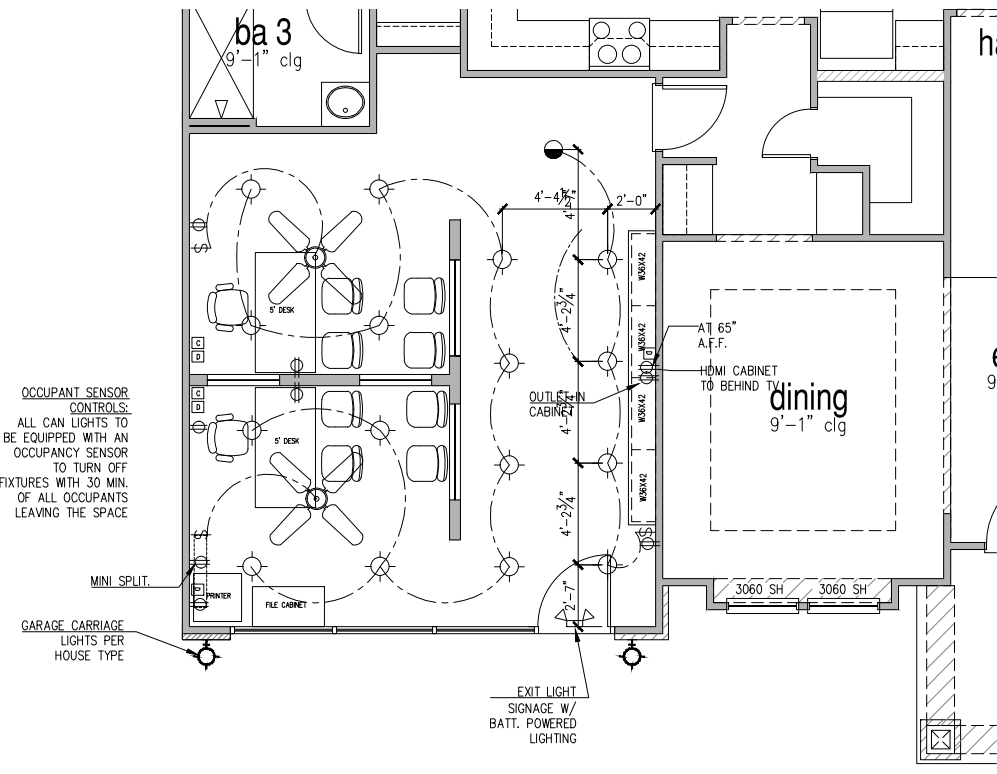
FILE: Lot_00.0047.dwg DATE: 6/27/2023 10:56 AM



PARTIAL 1ST FLOOR PLAN
SALES OFFICE
SCALE: 1/8" = 1'-0"



FRONT ELEVATION
SALES OFFICE
SCALE: 1/8" = 1'-0"



PARTIAL ELECTRICAL FLOOR PLAN
SALES OFFICE
SCALE: 1/8" = 1'-0"

FILE: Stonefield Sales Center 6-29-23.dwg DATE: 6/29/2023 2:11 PM

DATE	CHANGE

DRAWN BY:	
DATE:	6/29/23
PLAN NO.	

DRB GROUP
FIELDING
DAN RYAN BUILDERS
DB Central

HOUSE NAME:
STONEFIELD
DRAWING TITLE
PARTIAL PLANS
SALES CENTER

SHEET No.
SC-1

ATTIC VENT CALCULATION FOR PLAN '4'

UPPER ROOF VENTILATION CALCULATIONS:

ROOF AREA 1 = 1792 SQ. FT.
 OVERALL REQUIRED VENTILATION:
 1 TO 150 = 11.95 SQ. FT.
 1 TO 300 = 5.97 SQ. FT.
 50% IN TOP THIRD = 2.987 SQ. FT. (1 TO 300)
 NET FREE AREA OF VENTED SOFFIT = 5.1 SQ. IN / LINEAR FT.
 NET FREE AREA OF RIDGE VENT = 10 SQ. IN / LINEAR FT.
 LOWER VENTING (BOTTOM 2/3 RISE)
 82 LINEAR FEET OF SOFFIT X 5.1 SQ. IN. = 3245 SQ. FT.
 UPPER VENTING (TOP 1/3 RISE)
 24 LINEAR FEET OF RIDGE X 10 SQ. IN. = 3 SQ. FT.
 3 SQ. FT. AT 50%
 (1 TO 300 ALLOWED)

UPPER ROOF VENTILATION CALCULATIONS:

ROOF AREA 3 = 84 SQ. FT.
 OVERALL REQUIRED VENTILATION:
 1 TO 150 = 5.49 SQ. FT.
 1 TO 300 = 2.74 SQ. FT.
 50% IN TOP THIRD = 1.37 SQ. FT. (1 TO 300)
 NET FREE AREA OF VENTED SOFFIT = 5.1 SQ. IN / LINEAR FT.
 NET FREE AREA OF RIDGE VENT = 10 SQ. IN / LINEAR FT.
 LOWER VENTING (BOTTOM 2/3 RISE)
 23 LINEAR FEET OF SOFFIT X 5.1 SQ. IN. = 0.98 SQ. FT.
 UPPER VENTING (TOP 1/3 RISE)
 8 LINEAR FEET OF RIDGE X 10 SQ. IN. = 1 SQ. FT.
 1 SQ. FT. BETWEEN 50%
 (1 TO 300 ALLOWED)

UPPER ROOF VENTILATION CALCULATIONS:

ROOF AREA 6 = 234 SQ. FT.
 OVERALL REQUIRED VENTILATION:
 1 TO 150 = 1.56 SQ. FT.
 1 TO 300 = 0.78 SQ. FT.
 50% IN TOP THIRD = 0.394 SQ. FT. (1 TO 300)
 NET FREE AREA OF VENTED SOFFIT = 5.1 SQ. IN / LINEAR FT.
 NET FREE AREA OF RIDGE VENT = 10 SQ. IN / LINEAR FT.
 LOWER VENTING (BOTTOM 2/3 RISE)
 10 LINEAR FEET OF SOFFIT X 5.1 SQ. IN. = 0.346 SQ. FT.
 UPPER VENTING (TOP 1/3 RISE)
 4 LINEAR FEET OF RIDGE X 10 SQ. IN. = 0.5 SQ. FT.
 1 SQ. FT. AT 50%
 (1 TO 300 ALLOWED)

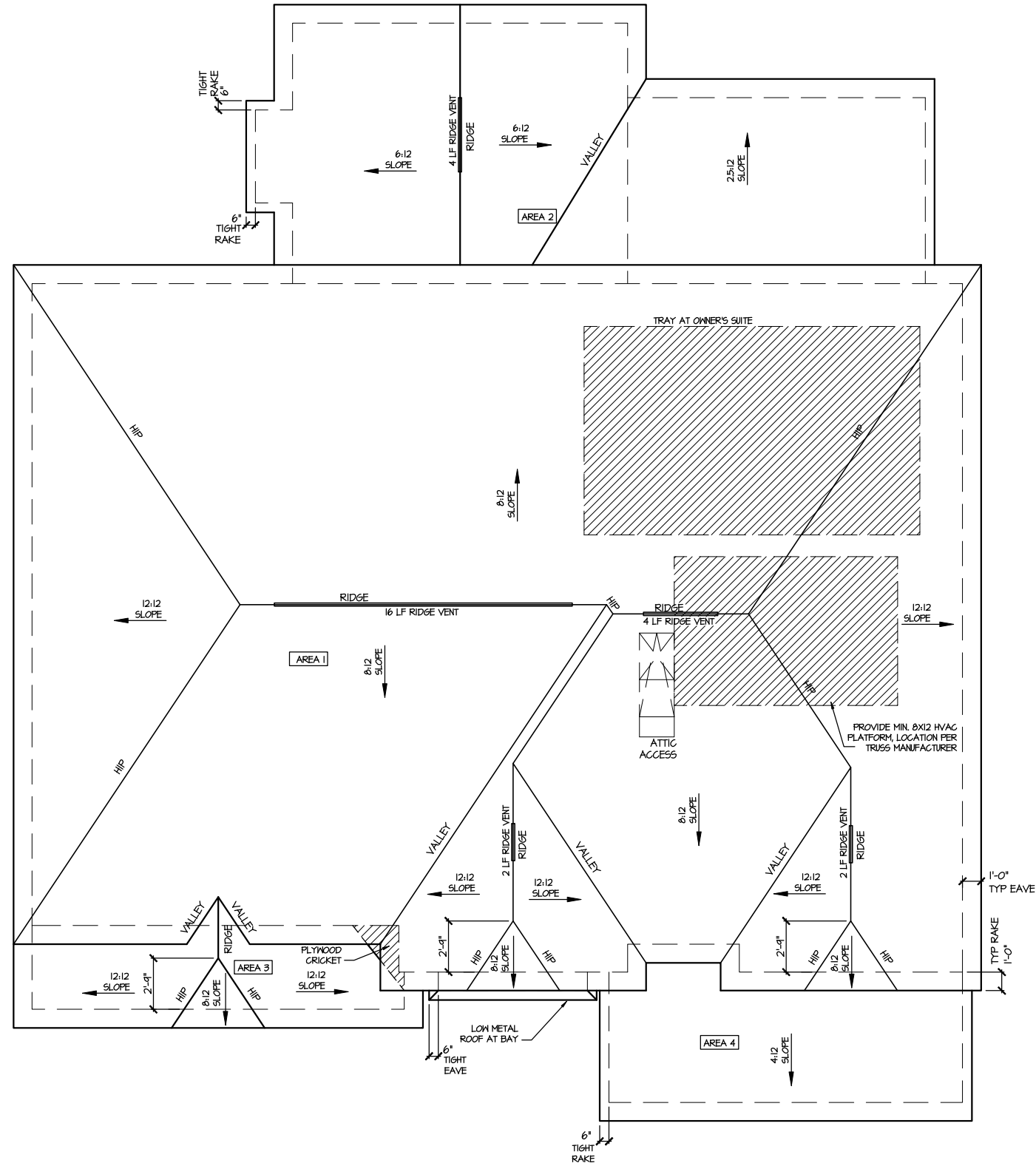
UPPER ROOF VENTILATION CALCULATIONS:

ROOF AREA 2 = 252 SQ. FT.
 OVERALL REQUIRED VENTILATION:
 1 TO 150 = 1.68 SQ. FT.
 1 TO 300 = 0.84 SQ. FT.
 50% IN TOP THIRD = 0.42 SQ. FT. (1 TO 300)
 NET FREE AREA OF VENTED SOFFIT = 5.1 SQ. IN / LINEAR FT.
 NET FREE AREA OF RIDGE VENT = 10 SQ. IN / LINEAR FT.
 LOWER VENTING (BOTTOM 2/3 RISE)
 11 LINEAR FEET OF SOFFIT X 5.1 SQ. IN. = 0.489 SQ. FT.
 UPPER VENTING (TOP 1/3 RISE)
 4 LINEAR FEET OF RIDGE X 10 SQ. IN. = 0.5 SQ. FT.
 0.5 SQ. FT. AT 50%
 (1 TO 300 ALLOWED)

UPPER ROOF VENTILATION CALCULATIONS:

ROOF AREA 4 = 142 SQ. FT.
 OVERALL REQUIRED VENTILATION:
 1 TO 150 = 0.441 SQ. FT.
 1 TO 300 = 0.2205 SQ. FT.
 50% IN TOP THIRD = 0.2205 SQ. FT. (1 TO 300)
 NET FREE AREA OF VENTED SOFFIT = 5.1 SQ. IN / LINEAR FT.
 NET FREE AREA OF RIDGE VENT = 10 SQ. IN / LINEAR FT.
 LOWER VENTING (BOTTOM 2/3 RISE)
 20 LINEAR FEET OF SOFFIT X 5.1 SQ. IN. = 0.74 SQ. FT.
 UPPER VENTING (TOP 1/3 RISE)
 8 LINEAR FEET OF RIDGE X 10 SQ. IN. = 1 SQ. FT.
 1 SQ. FT. AT 50%
 (1 TO 300 ALLOWED)

NOTE: ROOF PLANS SHOWN W/ MIN. REQ'D RIDGE VENT LOCATIONS.
 ACTUAL RIDGE VENT LOCATIONS AND QUANTITY PER BUILDER



ROOF PLAN ELEV. 4

SCALE: 1/8" = 1'-0"

UPDATED DATE
12-06-2021

REVISION DATE
1-RALE 09-16-19

DRAWN BY:
ITS
DATE:
06/27/2023
PLAN NO.
1635



HOUSE NAME:
STONEFIELD
DRAWING TITLE
ROOF PLAN

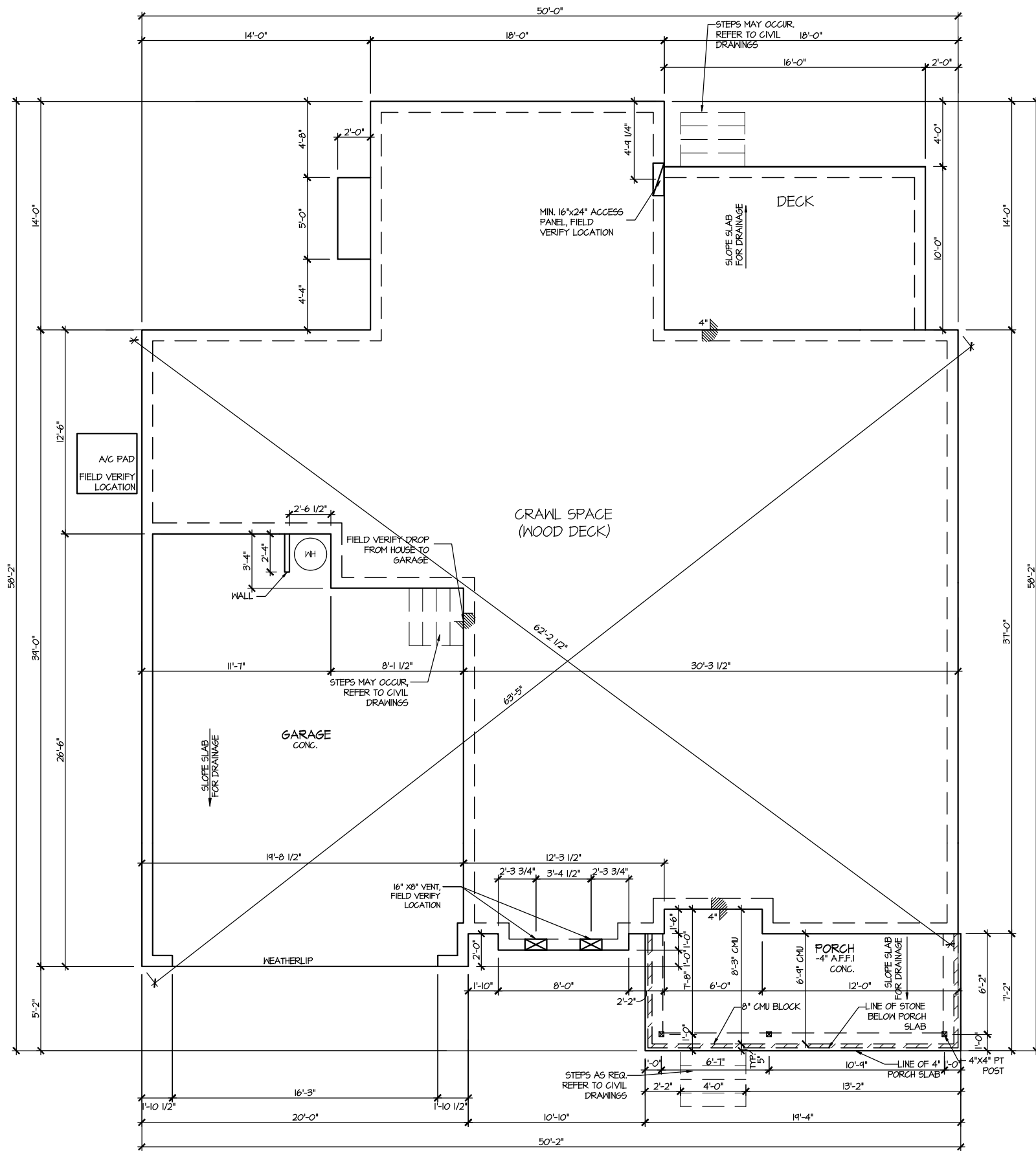
SHEET No.
A13

CRAWL SPACE VENT CALCULATIONS: ELEV 4
 CRAWL AREA = 1552 SQ. FT.
 OVERALL REQUIRED VENTILATION:
 1 SQ. IN. PER 1 SQ. FT. = 1552 SQ. IN.

NET FREE AREA OF VENT = 72 SQ. IN. PER VENT
 WITH AN AUTOMATIC VENT OAL-1 OR EQUAL

VENTING REQUIREMENT:
 1552 SQ. IN. / 72 SQ. IN. = 21.6 VENTS = 22 VENTS

ONLY VENTS ON THE FRONT ELEVATION ARE SHOWN.
 ALL OTHERS TO BE FIELD LOCATED.
 VENTS SHALL BE INSTALLED PER R322.2.2 - R322.2.2.1



ELEVATION 4
 CRAWL SPACE PLAN
 SCALE: 1/8" = 1'-0"

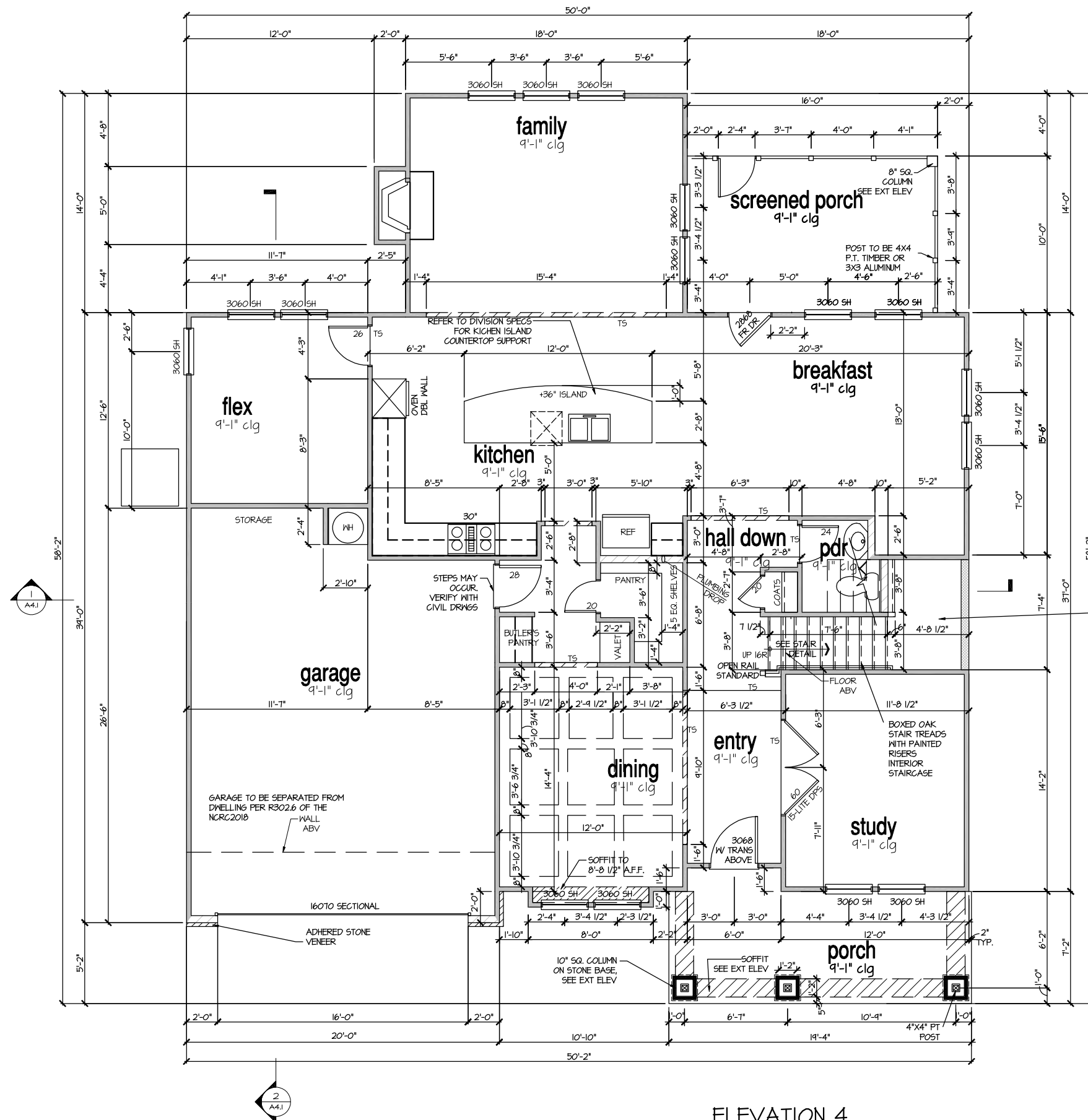
MASTER PLAN INFORMATION	
REVISION	DATE
1 - RALE	09-16-19
	UPDATED DATE
	12-06-2021

DRAWN BY:
 ITS
 DATE:
 06/27/2023
 PLAN NO.
 1635



HOUSE NAME:
 STONEFIELD
 DRAWING TITLE
 CRAWL SPACE PLAN

SHEET No.
 A2.1



**ELEVATION 4
FIRST FLOOR PLAN**

SCALE: 1/8" = 1'-0"

MASTER PLAN INFORMATION	
REVISION	DATE
1 - RALE	09-16-19
	UPDATED DATE
	12-06-2021

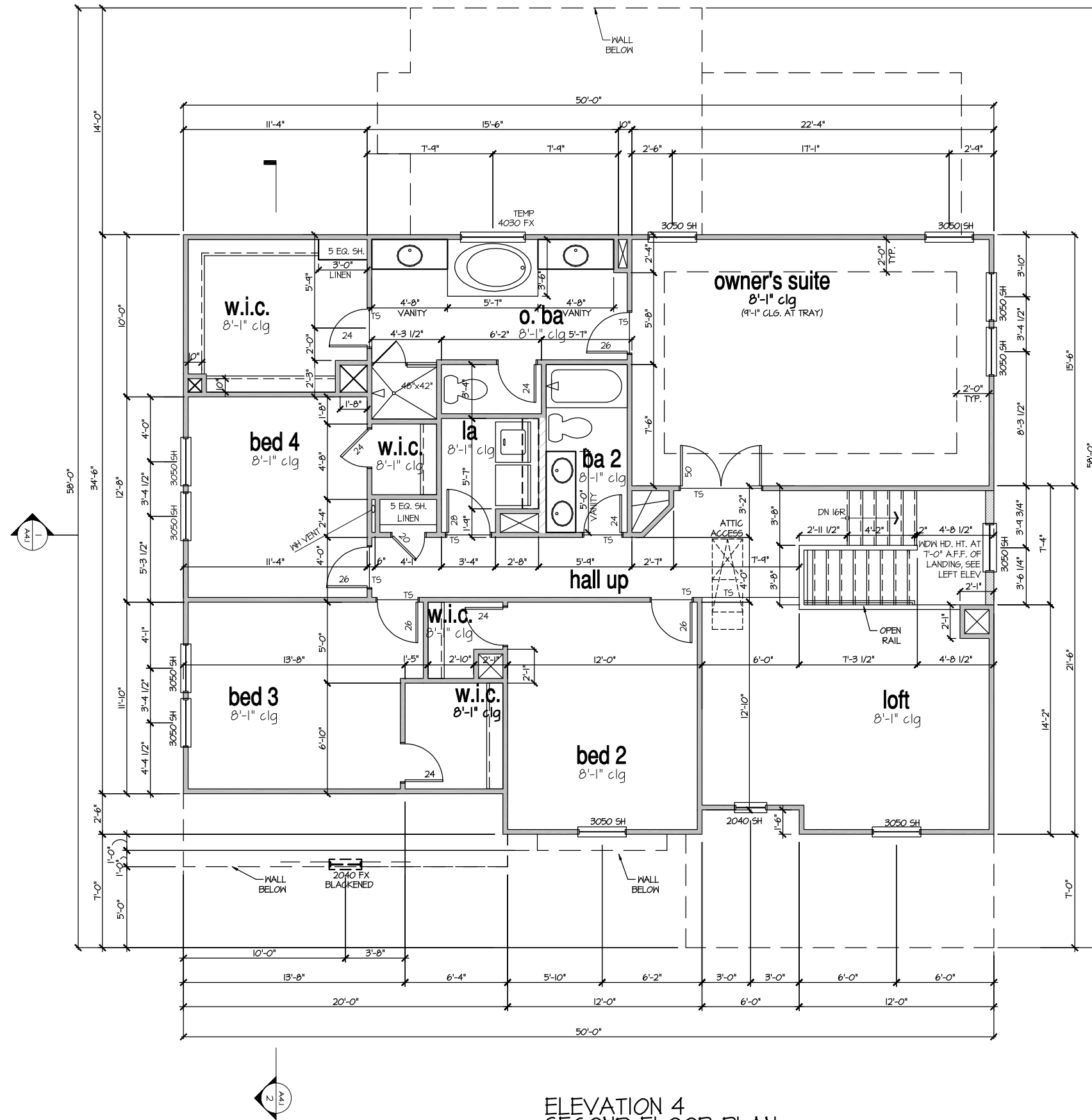
DRAWN BY:	ITS
DATE:	06/27/2023
PLAN NO.	1635



HOUSE NAME:	STONEFIELD
DRAWING TITLE	FIRST FLOOR PLAN

SHEET No.	A3.1
-----------	------

FILE: Lot 00.0047.dwg DATE: 6/27/2023 10:56 AM



ELEVATION 4
SECOND FLOOR PLAN
SCALE: 1/8" = 1'-0"

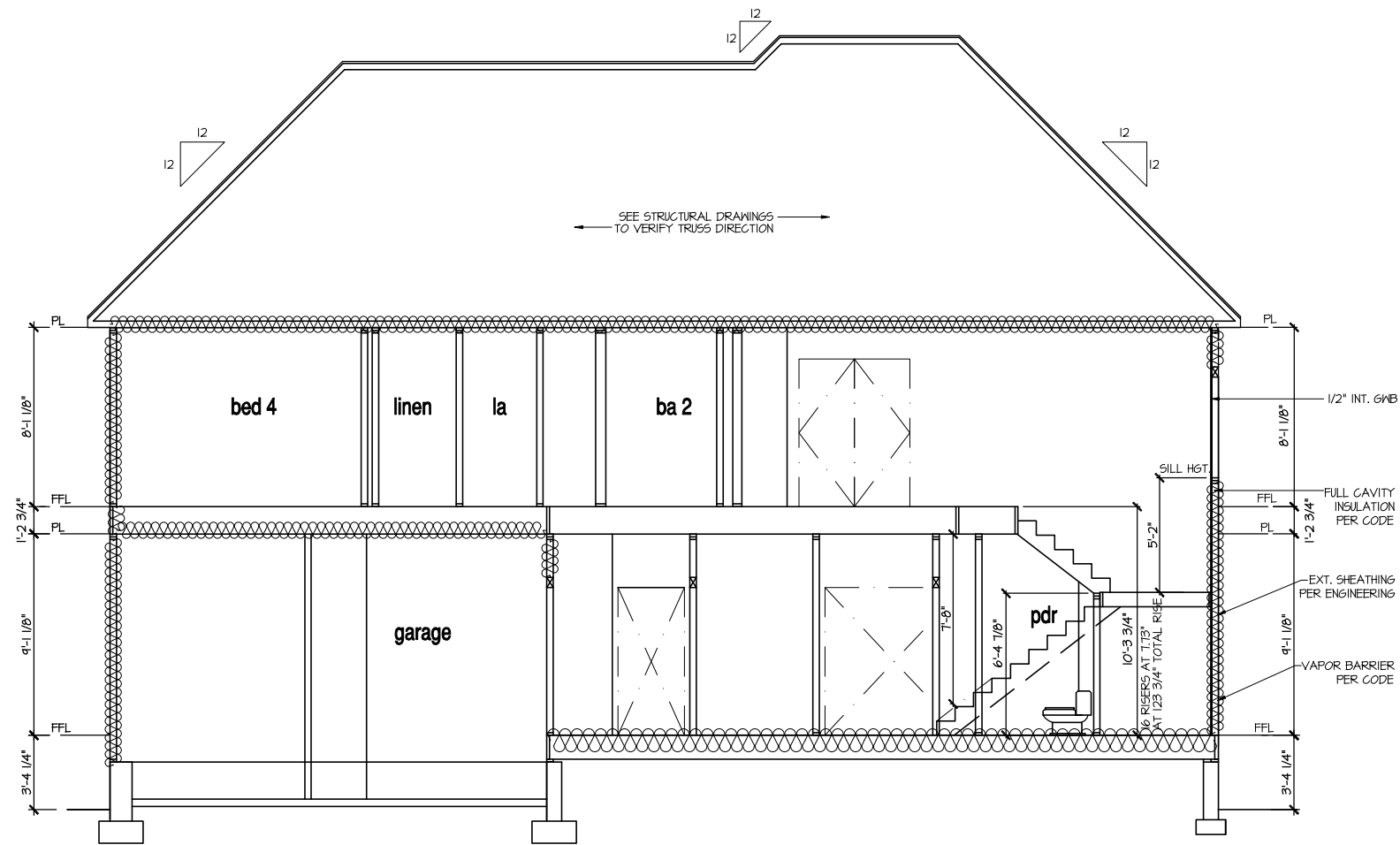
MASTER PLAN INFORMATION	
REVISION	DATE
1 - RALE	09-16-19
UPDATED DATE	12-06-2021

DRAWN BY:	ITS
DATE:	06/27/2023
PLAN NO.	1635

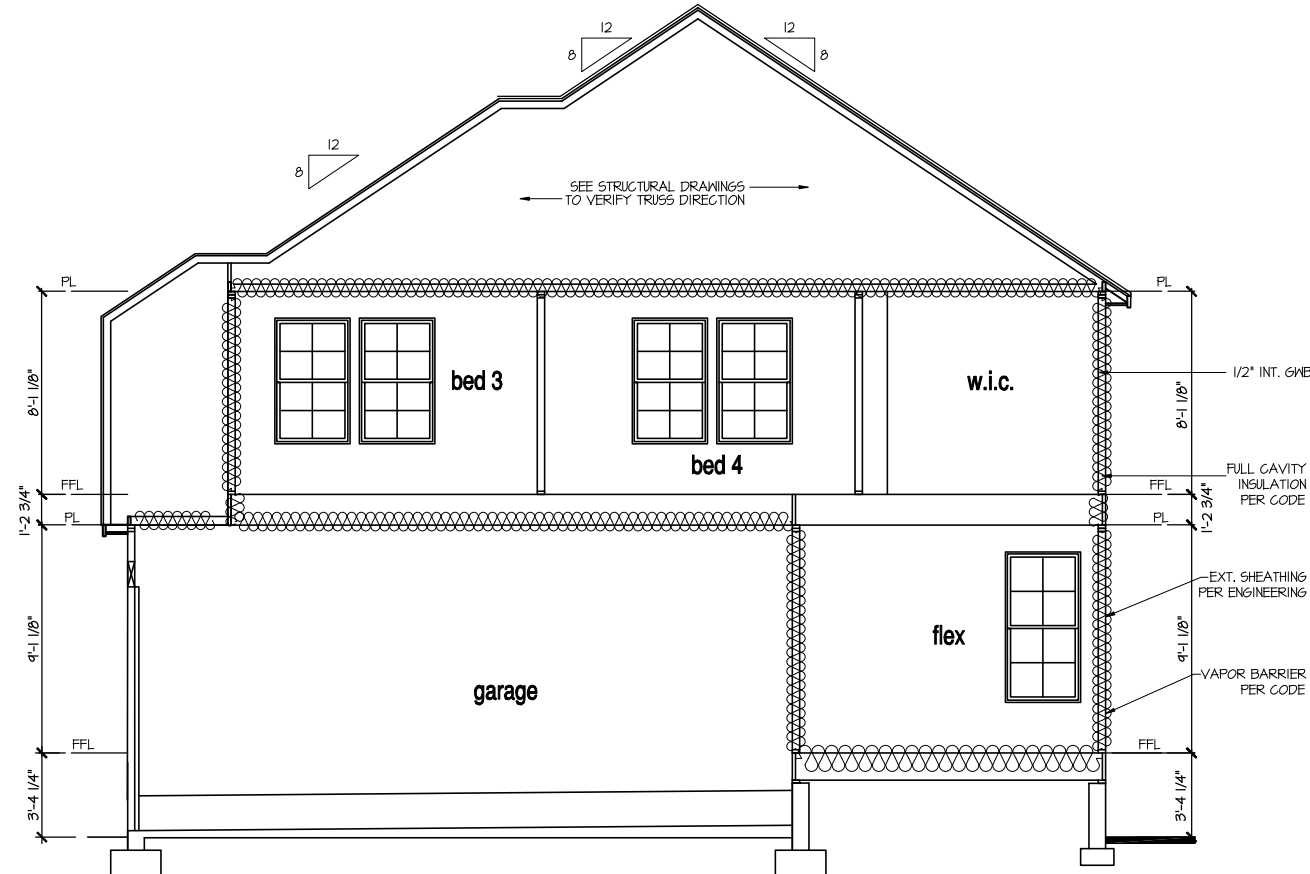


HOUSE NAME:	STONEFIELD
DRAWING TITLE	SECOND FLOOR PLAN

SHEET No.	A3.2
-----------	------



SECTION 1
SCALE: 1/8" = 1'-0"



SECTION 2
SCALE: 1/8" = 1'-0"

9'-1" STAIR NOTE:
USE 14" T.J. WITH 3/4" PLYWOOD SUBFLOOR.
15 TREADS AT 10" EACH VERIFY
16 RISERS AT +/- 1.13" = 123 3/4" TOTAL
RISE VERIFY

NOTES:

- BUILDING SECTIONS SHOWN HERE DEPICT VOLUMN SPACES WITHIN THE STRUCTURE. REFER TO STRUCTURAL DRAWINGS, TRUSS DRAWINGS, STRUCTURAL DETAILS AND CALCULATIONS BY OTHER FOR ALL STRUCTURAL INFO.
- ROOFING: PITCHED SHINGLE ROOF. REFER TO ROOF PLAN FOR TYPICALS.
- WOOD FLOORS: FLOOR SHEATHING OVER FLOOR JOIST. REFER TO STRUCTURAL AND TRUSS DRAWINGS BY OTHERS.
- INSULATION:
 EXTERIOR WALLS: R-13 BATT'S MINIMUM. VERIFY
 CEILING WITH ATTIC ABOVE: R-38 BATT'S MINIMUM. VERIFY
 FLOOR OVER GARAGE: R-14 BATT'S MINIMUM. VERIFY
 ATTIC KNEEWALL: R-14 BATT'S MINIMUM. VERIFY

PER STATE RESIDENTIAL CODE
COMPLIANCE METHOD TO BE
DETERMINED BY BUILDER.

MASTER PLAN INFORMATION	
REVISION DATE	12-06-2021
1-RALE	09-16-19

DRAWN BY:	ITS
DATE:	06/27/2023
PLAN NO.	1635

DRB
HOMES

HOUSE NAME:
STONEFIELD
DRAWING TITLE
BUILDING SECTION

SHEET No.
A4.1

MASTER PLAN INFORMATION	
REVISION	DATE
1 - RALE	09-16-19
UPDATED DATE	12-06-2021

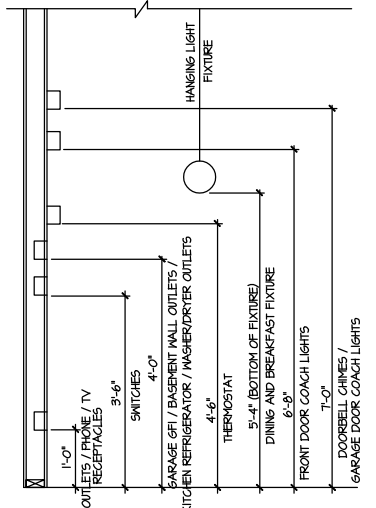
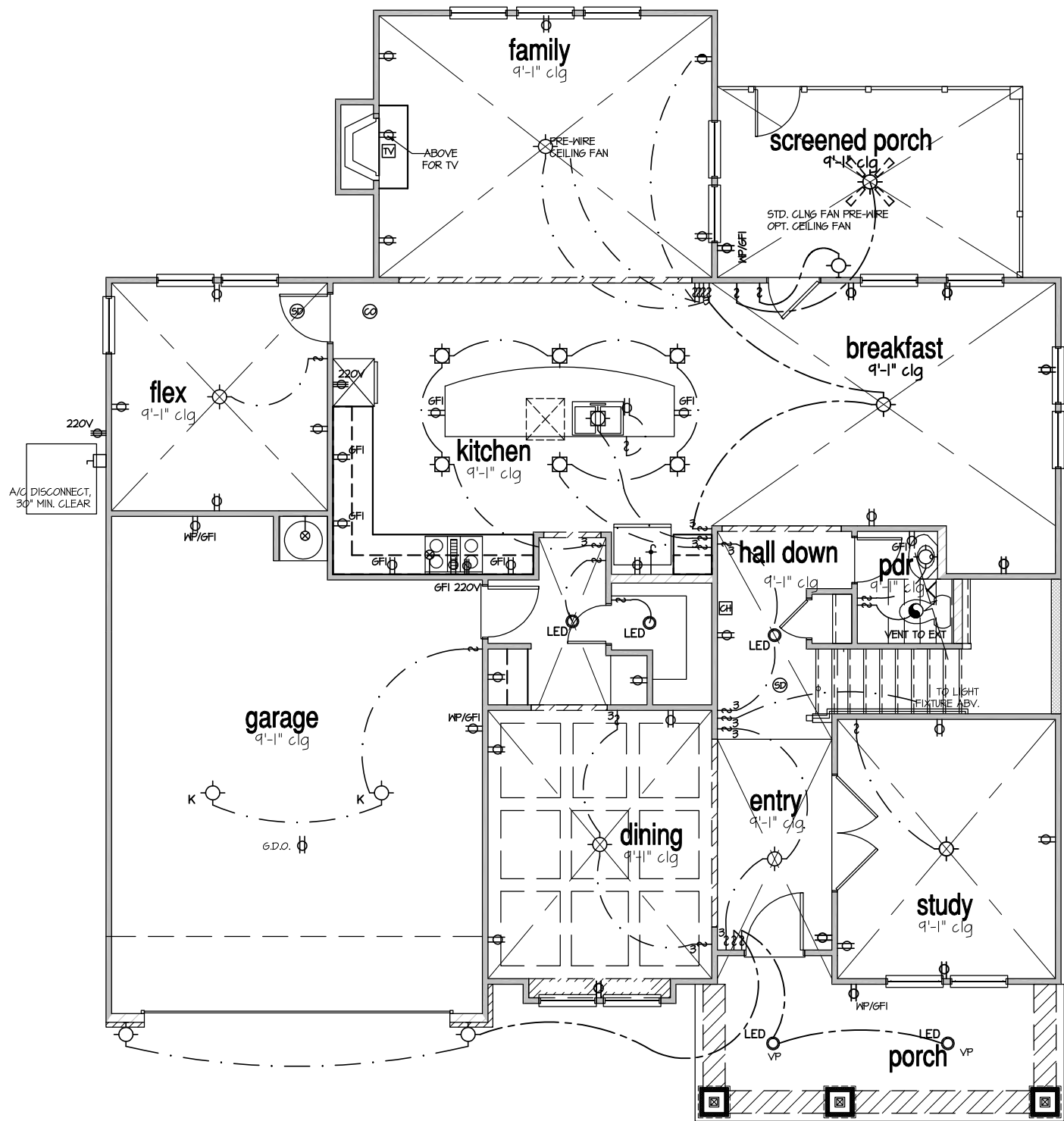
DRAWN BY:	ITS
DATE:	06/27/2023
PLAN NO.	1635



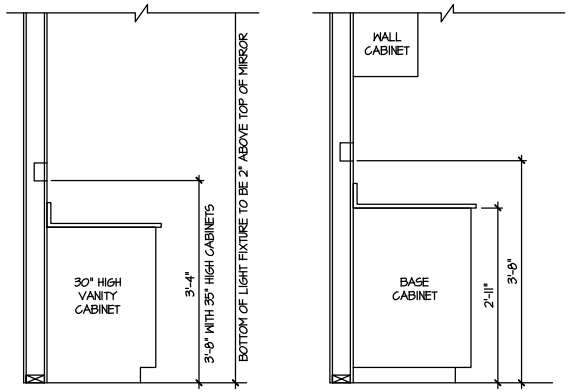
HOUSE NAME:
STONEFIELD

DRAWING TITLE
FIRST FLOOR ELECTRICAL

SHEET No.
E.I.



STANDARD ELECTRICAL BOX HEIGHTS



SWITCH AND RECEPTACLE BOXES OVER BATH CABINETS
SWITCH AND RECEPTACLE BOXES OVER KITCHEN CABINETS

NOTES:

- PROVIDE AND INSTALL LOCALLY CERTIFIED SMOKE DETECTORS AND CO2 DETECTORS AS REQUIRED BY NATIONAL FIRE PROTECTION ASSOCIATION (NFPA) AND MEETING THE REQUIREMENTS OF ALL GOVERNING CODES.
- PROVIDE AND INSTALL GROUND FAULT CIRCUIT-INTERRUPTERS (GFI) AS REQUIRED BY NATIONAL ELECTRICAL CODE (NEC) AND MEETING THE REQUIREMENTS OF ALL GOVERNING CODES.
- ELECTRICAL CONTRACTOR TO PROVIDE REQUIRED DIRECT HOOK-UPS/CUTOFFS.
- HVAC CONTRACTOR TO VERIFY THERMOSTAT LOCATIONS.
- ALL ELECTRICAL AND MECHANICAL EQUIPMENT (FURNACES, A/C UNITS, ELECTRICAL PANELS, SANITARY SUMP PITS, DRAIN TILE SUMP, AND WATER HEATERS) ARE SUBJECT TO RELOCATION DUE TO FIELD CONDITIONS.
- PROVIDE POWER, LIGHT AND SWITCH AS REQUIRED FOR ATTIC FURNACE PER CODE AND MANUFACTURER'S WRITTEN INSTRUCTIONS.
- CLOSET LIGHTS TO BE FLUORESCENT FIXTURES FOR NC & INCANDESCENT CLG. MOUNTED FIXTURES FOR ALL OTHER AREAS.

LEGEND:

⊕	AFGI DUPLEX OUTLET	⊙	CEILING MOUNTED INCANDESCENT LIGHT FIXTURE	⊠	CHIMES	⊗	CEILING FAN (PROVIDE ADEQUATE SUPPORT)
⊕MP/GFI	WEATHERPROOF GFI AFGI DUPLEX OUTLET	⊙K	KEYLESS LIGHT	⊠	PUSHBUTTON SWITCH	⊗	CEILING FAN WITH INCANDESCENT LIGHT FIXTURE (PROVIDE ADEQUATE SUPPORT)
⊕GFI	GROUND-FAULT CIRCUIT-INTERRUPTER AFGI DUPLEX OUTLET	⊙	MALL MOUNTED INCANDESCENT LIGHT FIXTURE	⊕	110V SMOKE DETECTOR W/ BATTERY BACKUP	⊗	CEILING FAN WITH INCANDESCENT LIGHT FIXTURE (PROVIDE ADEQUATE SUPPORT)
⊕	HALF-SWITCHED AFGI DUPLEX OUTLET	⊙	RECESSED LIGHT FIXTURE	⊕	CO2 DETECTOR	⊕	GAS SUPPLY WITH VALVE
⊕220V	220 VOLT AFGI OUTLET	⊙LED	LED SURFACE MOUNTED	⊕	THERMOSTAT	⊕	HOSE BIBB
⊕	REINFORCED JUNCTION BOX	⊕	EXHAUST FAN (VENT TO EXTERIOR)	⊕	TELEPHONE	⊕	1/4" WATER STUB OUT
⊕	WALL SWITCH	⊕	EXHAUST FAN/LIGHT COMBINATION (VENT TO EXTERIOR)	⊕	TELEVISION	⊕	
⊕3	THREE-WAY SWITCH	⊕	TECH. HUB SYSTEM	⊕	ELECTRIC METER		
⊕4	FOUR-WAY SWITCH			⊕	ELECTRIC PANEL		
⊕	LED STRIP FIXTURE			⊕	DISCONNECT SWITCH		

ELECTRICAL PLAN
FIRST FLOOR - ELEV. 4
SCALE: 1/8" = 1'-0"

FILE: Lot 00.0047.dwg DATE: 6/27/2023 10:56 AM

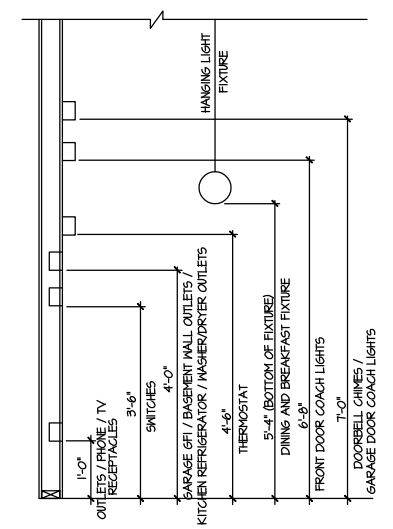
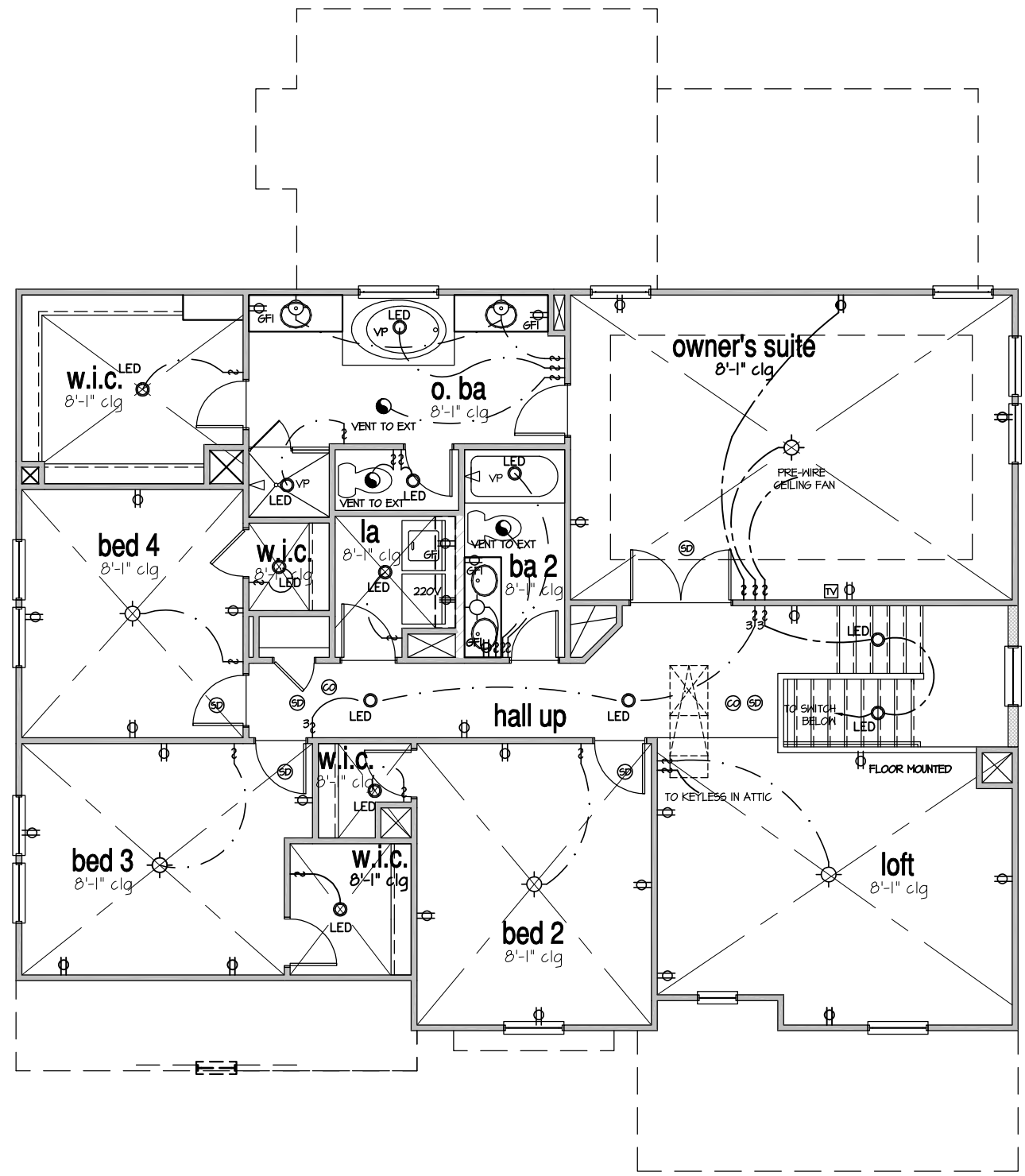
MASTER PLAN INFORMATION	UPDATED DATE
REVISION DATE	12-06-2021
1-RALE	09-16-19

DRAWN BY:	ITS
DATE:	06/27/2023
PLAN NO.	1635

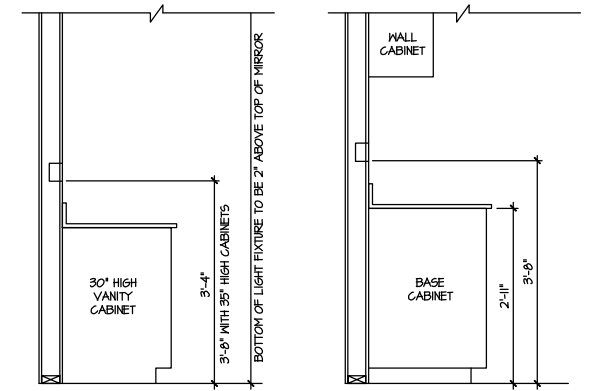


HOUSE NAME: STONEFIELD
DRAWING TITLE: SECOND FLOOR ELECTRICAL

SHEET No. E1.2



STANDARD ELECTRICAL BOX HEIGHTS



SWITCH AND RECEPTACLE BOXES OVER BATH CABINETS
SWITCH AND RECEPTACLE BOXES OVER KITCHEN CABINETS

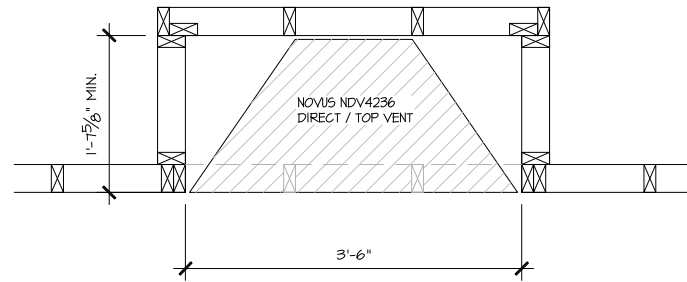
- NOTES:**
- PROVIDE AND INSTALL LOCALLY CERTIFIED SMOKE DETECTORS AND CO2 DETECTORS AS REQUIRED BY NATIONAL FIRE PROTECTION ASSOCIATION (NFPA) AND MEETING THE REQUIREMENTS OF ALL GOVERNING CODES.
 - PROVIDE AND INSTALL GROUND FAULT CIRCUIT-INTERRUPTERS (GFI) AS REQUIRED BY NATIONAL ELECTRICAL CODE (NEC) AND MEETING THE REQUIREMENTS OF ALL GOVERNING CODES.
 - ELECTRICAL CONTRACTOR TO PROVIDE REQUIRED DIRECT HOOK-UPS/CUTOFFS.
 - HVAC CONTRACTOR TO VERIFY THERMOSTAT LOCATIONS.
 - ALL ELECTRICAL AND MECHANICAL EQUIPMENT (FURNACES, A/C UNITS, ELECTRICAL PANELS, SANITARY SUMP PITS, DRAIN TILE PUMP, AND WATER HEATERS) ARE SUBJECT TO RELOCATION DUE TO FIELD CONDITIONS.
 - PROVIDE POWER, LIGHT AND SWITCH AS REQUIRED FOR ATTIC FURNACE PER CODE AND MANUFACTURER'S WRITTEN INSTRUCTIONS.
 - CLOSET LIGHTS TO BE FLOURESCENT FIXTURES FOR NC & INCANDESCENT CLG. MOUNTED FIXTURES FOR ALL OTHER AREAS.

LEGEND:			
⊕	AFGI DUPLEX OUTLET	⊙	CEILING MOUNTED INCANDESCENT LIGHT FIXTURE
⊕W/8FI	WEATHERPROOF GFI AFGI DUPLEX OUTLET	⊙	KEYLESS LIGHT
⊕GFI	GROUND-FAULT CIRCUIT-INTERRUPTER AFGI DUPLEX OUTLET	⊙	WALL MOUNTED INCANDESCENT LIGHT FIXTURE
⊕	HALF-SWITCHED AFGI DUPLEX OUTLET	⊙	RECESSED LIGHT FIXTURE
⊕220V	220 VOLT AFGI OUTLET	⊙LED	LED SURFACE MOUNTED
⊕	REINFORCED JUNCTION BOX	⊙	EXHAUST FAN (VENT TO EXTERIOR)
⊕	WALL SWITCH	⊙	EXHAUST FAN/LIGHT COMBINATION (VENT TO EXTERIOR)
⊕3	THREE-WAY SWITCH	⊙	TECH. HUB SYSTEM
⊕4	FOUR-WAY SWITCH	⊙	
⊕	LED STRIP FIXTURE	⊙	
⊕		⊕	CHIMES
⊕		⊕	PUSHBUTTON SWITCH
⊕		⊕	10V SMOKE DETECTOR W/ BATTERY BACKUP
⊕		⊕	CO2 DETECTOR
⊕		⊕	THERMOSTAT
⊕		⊕	TELEPHONE
⊕		⊕	TELEVISION
⊕		⊕	ELECTRIC METER
⊕		⊕	ELECTRIC PANEL
⊕		⊕	DISCONNECT SWITCH
⊕		⊕	CEILING FAN (PROVIDE ADEQUATE SUPPORT)
⊕		⊕	CEILING FAN WITH INCANDESCENT LIGHT FIXTURE (PROVIDE ADEQUATE SUPPORT)
⊕		⊕	GAS SUPPLY WITH VALVE
⊕		⊕	HOSE BIBB
⊕		⊕	1/4" WATER STUB OUT

ELECTRICAL PLAN
SECOND FLOOR - ELEV. 4
SCALE: 1/8" = 1'-0"

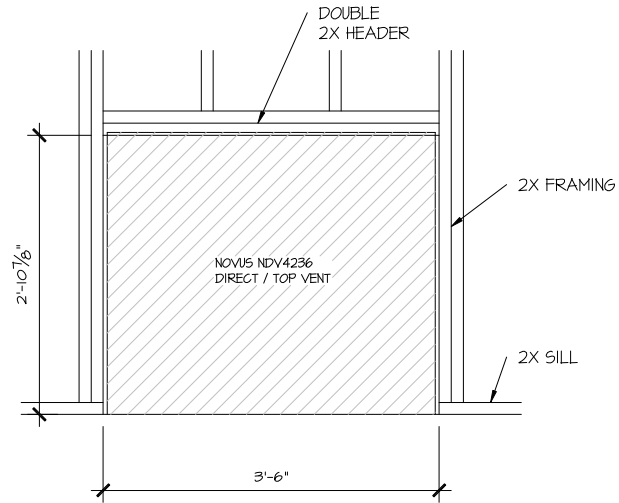
FILE: Lot_00.0047.dwg DATE: 6/27/2023 10:56 AM

ALL DIMENSIONS
ARE TO FRAMING



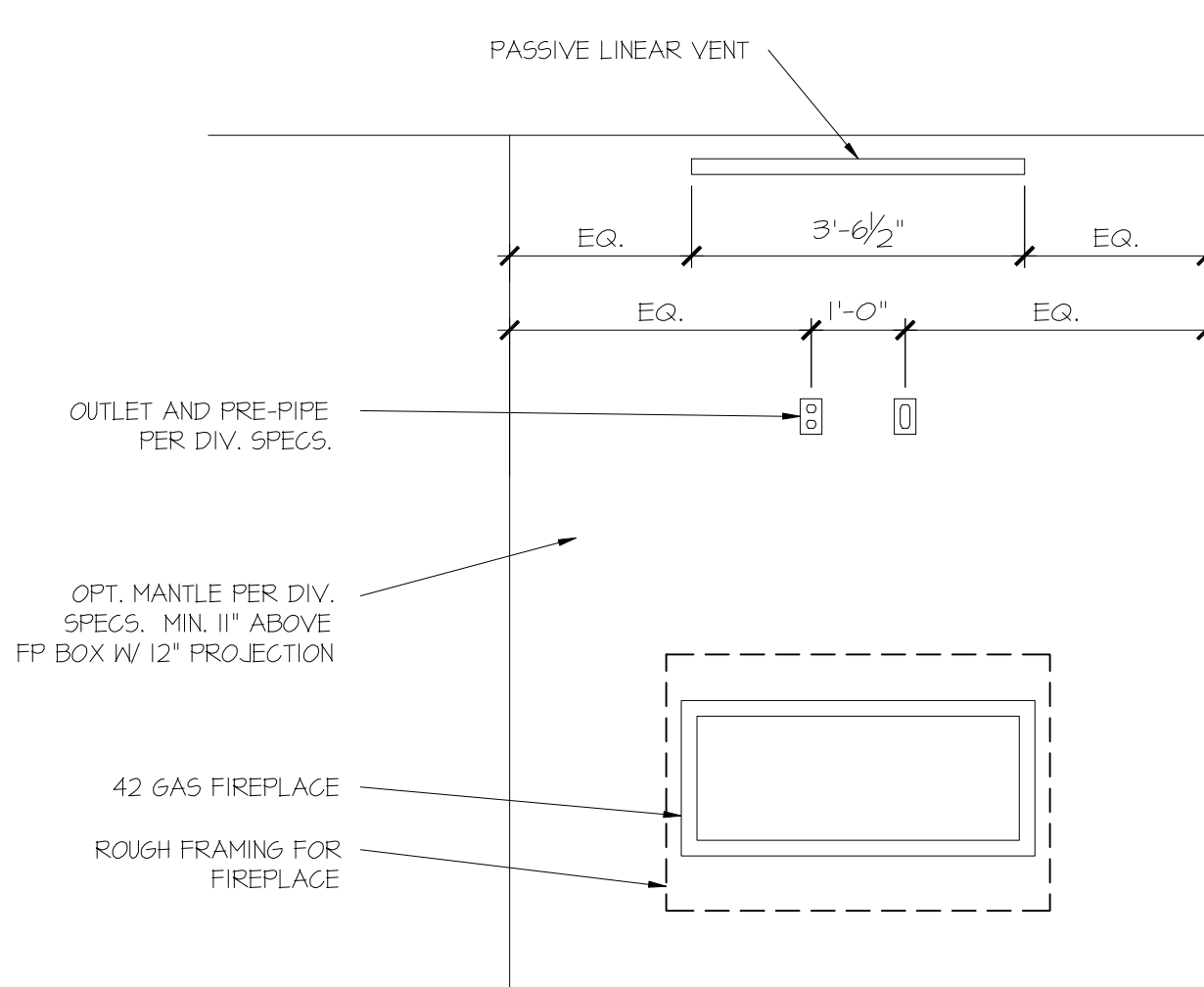
PARTIAL PLAN
NOVUS NDV4236

SCALE: 1/2" = 1'-0"



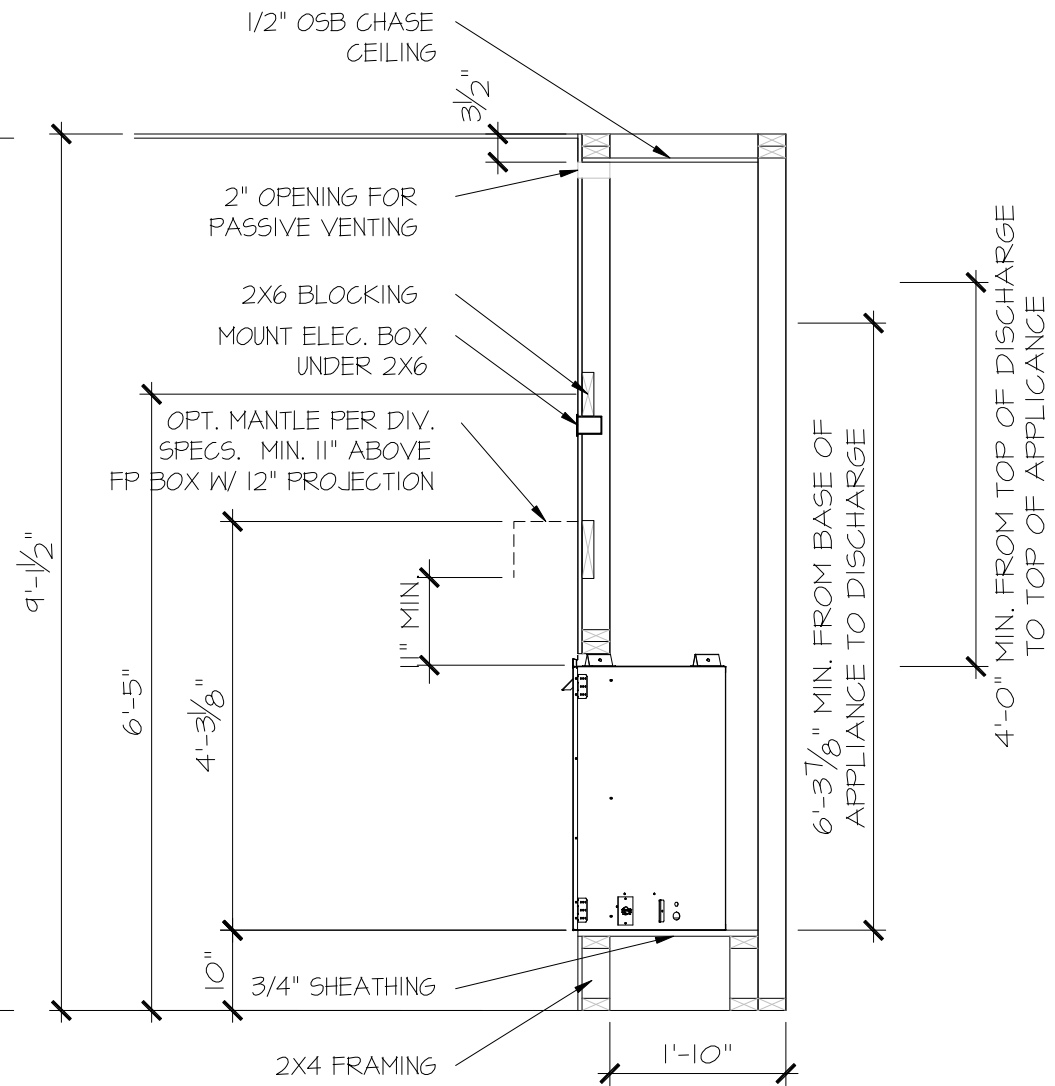
PARTIAL ELEVATION
NOVUS NDV4236

SCALE: 1/2" = 1'-0"



PARTIAL ELEVATION
NOVUS NDV4236

SCALE: 1/2" = 1'-0"



PARTIAL SECTION
NOVUS NDV4236

SCALE: 1/2" = 1'-0"

CONSULTANT LOGO

SEAL

DRAWN BY:

DATE:

PLAN NO.
L. BEAVERS

11 X 17 SCALE
9-8-22

24 X 36 SCALE
N/A

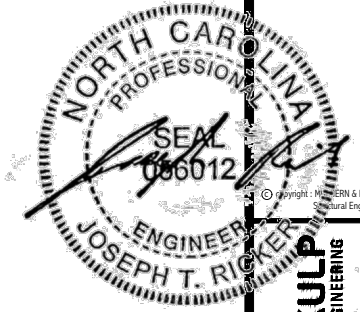
DRB
HOMES

HOUSE NAME:
RALE FIREPLACE DETAILS

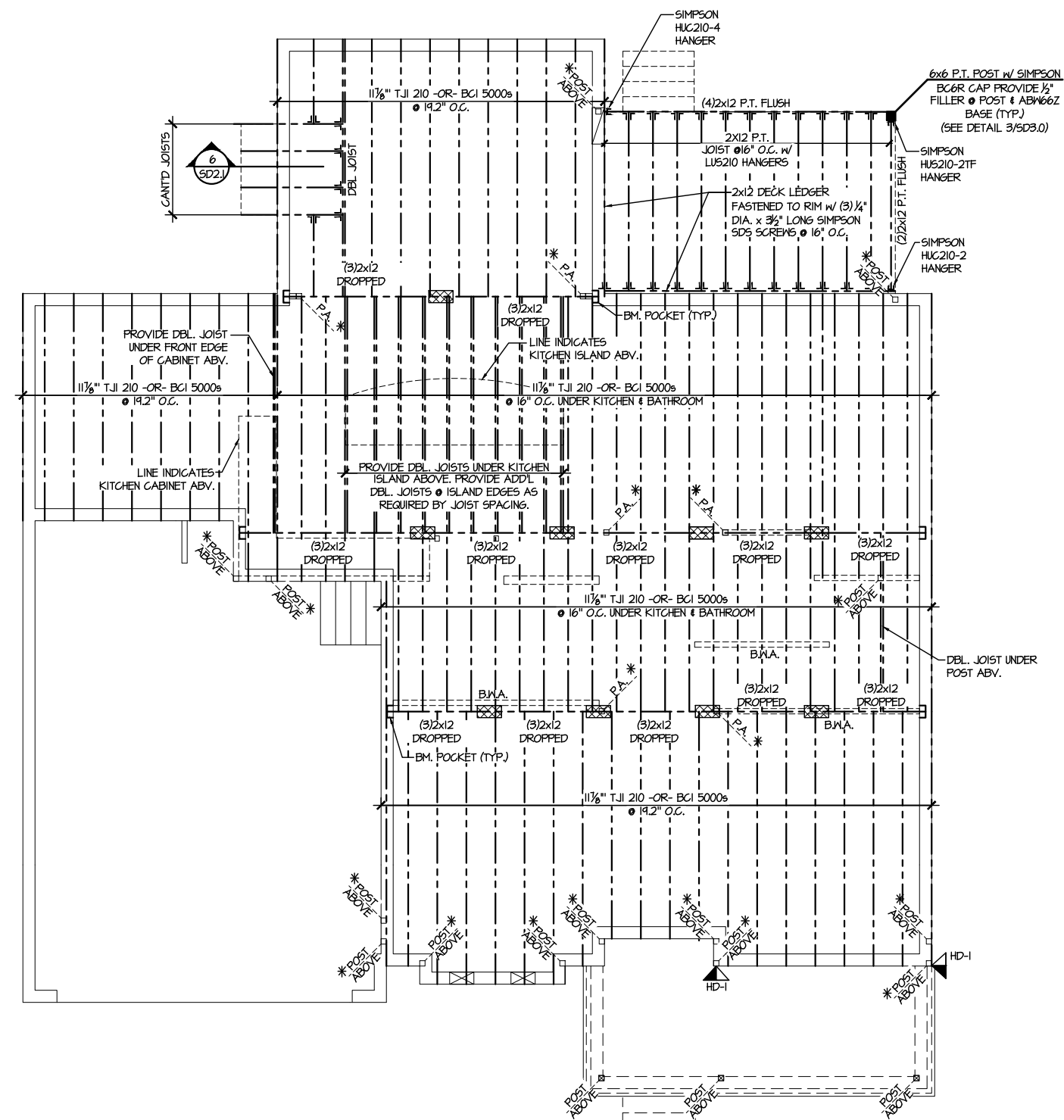
DRAWING TITLE
RALE FIREPLACE DETAIL
INTERIOR GAS UNITS

SHEET No.

11
20
11



MULHERN+KULP
RESIDENTIAL STRUCTURAL ENGINEERING
310 Remainside Ave., Building 4 - Aachen, PA 15822
P 215-948-8001 • mulhern+kulp.com
NC LICENSE #C-3825



SD2.I REFERS TO SD2.IA FOR LVL/PSL/LSL BEAMS OR SD2.IB FOR FLITCH BEAMS OR SD2.IC FOR STEEL BEAMS

LEGEND	
	INTERIOR BEARING WALL
	BEARING WALL ABOVE
	BEAM / HEADER
	INDICATES SHEAR WALL & EXTENT
	EXTENT OF OVERFRAMING
	JL METAL HANGER
	INDICATES POST ABOVE. PROVIDE SOLID BLOCKING UNDER POST OR JAMB ABOVE.
	INDICATES HOLD-DOWN OR STRAP. REFER TO SCHEDULE.

REFER TO 50.0 FOR TYPICAL STRUCTURAL NOTES & SCHEDULES

ENGINEERED BEAM MATERIAL SCHEDULE					
BEAM NUMBER	LVL OPTION	PSL OPTION	LSL OPTION	FLITCH OPTION	STEEL OPTION
001	(2) 3/4" x 16" - D	3/2" x 16" - D	N/A	(2) 2x12 + (1) 3/8" x 11/8" STEEL FLITCH PLATES - D	N12x14 - D
002	(2) 3/4" x 17 1/2" - D	3/2" x 17 1/2" - D	(3) 3/4" x 17 1/2" - D	(2) 2x12 + (1) 3/8" x 11/8" STEEL FLITCH PLATES - D	N12x14 - D
003	(2) 3/4" x 14" - F	3/2" x 14" - F	(2) 3/4" x 14" - F	(2) 2x12 + (1) 3/8" x 11/8" STEEL FLITCH PLATES - F	N12x14 - F
004	(2) 3/4" x 14" - F	3/2" x 14" - F	(3) 3/4" x 14" - F	(2) 2x12 + (1) 3/8" x 11/8" STEEL FLITCH PLATES - F	N12x14 - F
005	(3) 3/4" x 18" - FT	5/4" x 18" - FT	N/A	(3) 2x12 + (2) 3/8" x 11/8" STEEL FLITCH PLATES - F	N12x26 - F
006	(3) 3/4" x 18" - FT	5/4" x 18" - FT	N/A	(3) 2x12 + (2) 3/8" x 11/8" STEEL FLITCH PLATES - F	N12x26 - F
007	(2) 3/4" x 14" - F	3/2" x 14" - F	(2) 3/4" x 14" - F	(2) 2x12 + (1) 3/8" x 11/8" STEEL FLITCH PLATES - F	N12x14 - F
008	(2) 3/4" x 14" - F	3/2" x 14" - F	(2) 3/4" x 14" - F	(2) 2x12 + (1) 3/8" x 11/8" STEEL FLITCH PLATES - F	N12x14 - F
009	(2) 3/4" x 14" - D	3/2" x 14" - D	(2) 3/4" x 14" - D	(2) 2x10 + (1) 3/8" x 11/8" STEEL FLITCH PLATES - D	N10x12 - D
010	(2) 3/4" x 16" - H	3/2" x 16" - H	(3) 3/4" x 16" - H	(3) 2x12 + (2) 3/8" x 11/8" STEEL FLITCH PLATES - H	N/A
011	(2) 3/4" x 17 1/2" - D	3/2" x 17 1/2" - D	(3) 3/4" x 17 1/2" - D	(2) 2x12 + (1) 3/8" x 11/8" STEEL FLITCH PLATES - D	N12x14 - D
012	(3) 3/4" x 16" - D	5/4" x 16" - D	(4) 3/4" x 16" - D	(3) 2x12 + (2) 3/8" x 11/8" STEEL FLITCH PLATES - D	N12x19 - D
013	(2) 3/4" x 17 1/2" - D	3/2" x 17 1/2" - D	(3) 3/4" x 17 1/2" - D	(2) 2x12 + (1) 3/8" x 11/8" STEEL FLITCH PLATES - D	N12x14 - D
014	(2) 3/4" x 16" - D	3/2" x 16" - D	(3) 3/4" x 16" - D	(3) 2x12 + (2) 3/8" x 11/8" STEEL FLITCH PLATES - D	N12x14 - D
015***	(3) 3/4" x 17 1/2" - D	N/A	(3) 3/4" x 17 1/2" - D	(3) 2x12 + (2) 3/8" x 11/8" STEEL FLITCH PLATES - D	N12x14 - D
016	(2) 3/4" x 17 1/2" - F	3/2" x 17 1/2" - F	(3) 3/4" x 17 1/2" - F	(2) 2x12 + (1) 3/8" x 11/8" STEEL FLITCH PLATES - F	N12x14 - F

* BEAM NOTATION:
 - "F" INDICATES FLUSH BEAM
 - "FT" INDICATES FLUSH TOP BEAM
 - "FB" INDICATES FLUSH BOTTOM BEAM
 - "D" INDICATES DROPPED BEAM
 - "H" INDICATES DROPPED OPENING HEADER
 * REFER TO DETAIL D/SD2.0 FOR TYPICAL FLITCH BEAM CONNECTIONS
 * REFER TO DETAIL E/SD2.0 FOR TYPICAL STEEL BEAM CONNECTIONS
 * FOR FLUSH TOP BEAMS PROVIDE 2X STACKED PLATES BENEATH BEAM AS REQ'D. FASTEN PLATES IN SUCCESSION W/ (2) 3"x0.120" NAILS @ 8" O.C.
 * FOR FLUSH BOTTOM BEAMS PROVIDE 2X STACKED PLATES ATOP BEAM AS REQ'D. FASTEN PLATES IN SUCCESSION W/ (2) 3"x0.120" NAILS @ 8" O.C.
 *** - SEE PLAN FOR EXTENT OF 3-PLY BEAM

1ST FLOOR FRAMING PLAN
SCALE: 1/8"=1'-0"

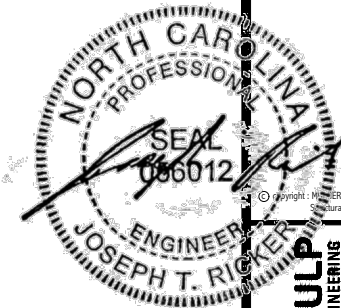
M&K project number:
126-23035
project mgr: JTR
drawn by: BGL
issue date: 07-12-23

REVISIONS:
date: initial:



FLOOR FRAMING PLANS
HONEYCUTT HILLS
LOT 47 - STONEFIELD 4
RALEIGH, NC

sheet:
S2.0



MULHERN+KULP
RESIDENTIAL STRUCTURAL ENGINEERING
310 Remainside Ave, Building 4 - Aanhoe, PA 15082
P 215-948-8001 - mulhern@mkulpe.com
NC LICENSE #C-3825

M&K project number:
126-23035
project mgr: JTR
drawn by: BGL
issue date: 07-12-23
REVISIONS:
date: initial:



FLOOR FRAMING PLANS
HONEYCUTT HILLS
LOT 47 - STONEFIELD 4
RALEIGH, NC

sheet:
S3.0

SD2.I REFERS TO SD2.IA FOR LVL/PSL/LSL BEAMS OR SD2.IB FOR FLITCH BEAMS OR SD2.IC FOR STEEL BEAMS

LEGEND

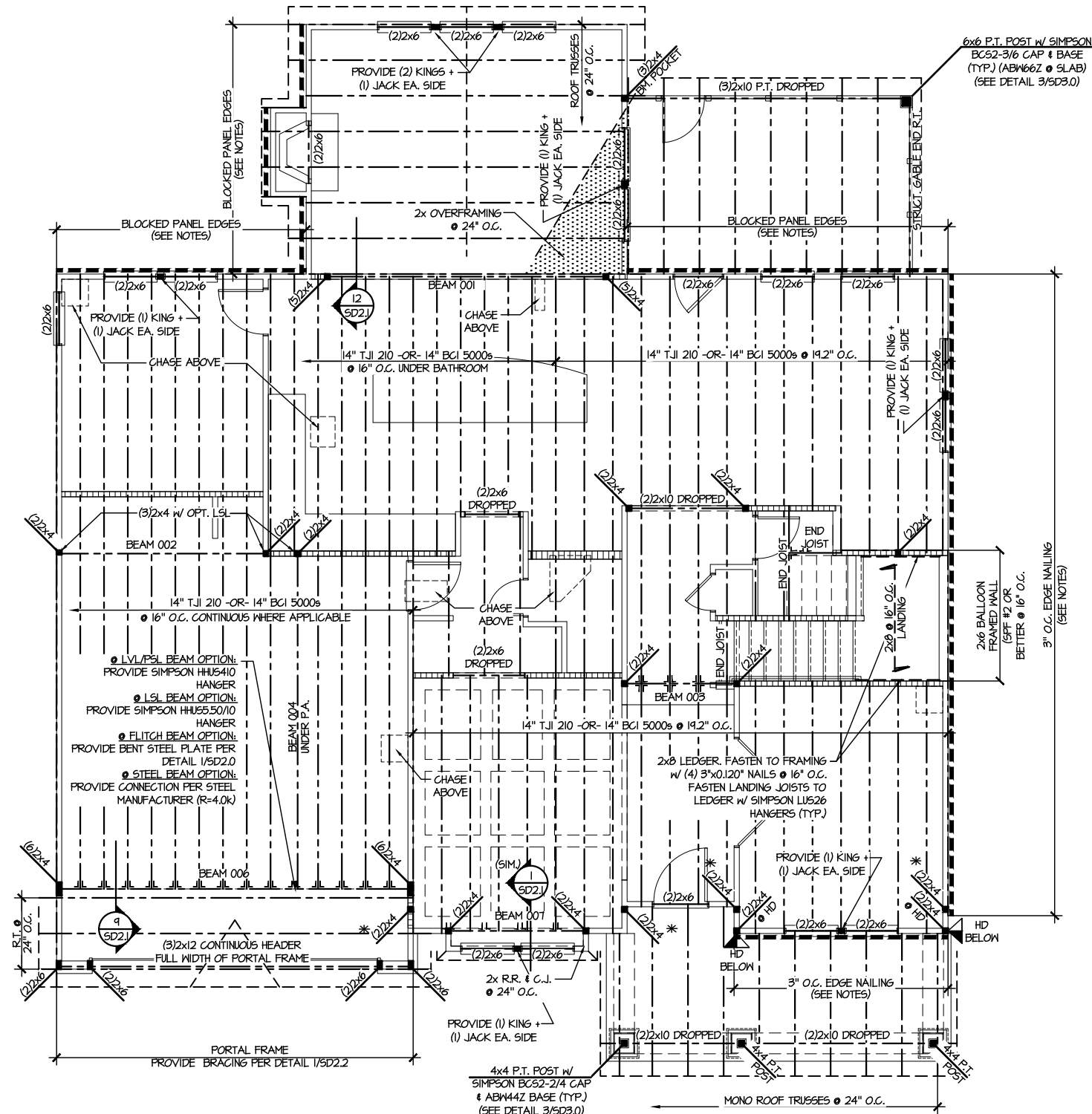
- ◻ INTERIOR BEARING WALL
- ◻ BEARING WALL ABOVE
- BEAM / HEADER
- ◻ INDICATES SHEAR WALL & EXTENT
- ◻ EXTENT OF OVERFRAMING
- JL METAL HANGER
- * INDICATES POST ABOVE. PROVIDE SOLID BLOCKING UNDER POST OR JAMB ABOVE.
- ▶ INDICATES HOLD-DOWN OR STRAP. REFER TO SCHEDULE.

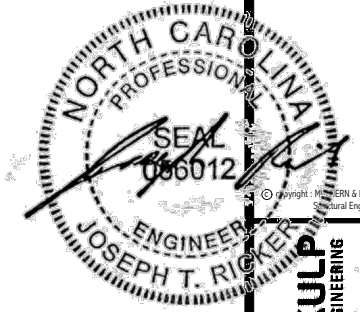
REFER TO 50.0 FOR TYPICAL STRUCTURAL NOTES & SCHEDULES

ENGINEERED BEAM MATERIAL SCHEDULE

BEAM NUMBER	LVL OPTION	PSL OPTION	LSL OPTION	FLITCH OPTION	STEEL OPTION
001	(2)3/4"x16" - D	3/8"x16" - D	N/A	(2)2x12 + (1) 3/8"x11/2" STEEL FLITCH PLATES - D	M12x14 - D
002	(2)3/4"x11/2" - D	3/8"x11/2" - D	(3)3/4"x11/2" - D	(2)2x12 + (1) 1/2"x11/2" STEEL FLITCH PLATES - D	M12x14 - D
003	(2)3/4"x14" - F	3/8"x14" - F	(2)3/4"x14" - F	(2)2x12 + (1) 1/2"x11/2" STEEL FLITCH PLATES - F	M12x14 - F
004	(2)3/4"x14" - F	3/8"x14" - F	(3)3/4"x14" - F	(2)2x12 + (1) 3/8"x11/2" STEEL FLITCH PLATES - F	M12x14 - F
005	(3)3/4"x18" - FT	3/4"x18" - FT	N/A	(3)2x12 + (2) 3/8"x11/2" STEEL FLITCH PLATES - F	M12x26 - F
006	(3)3/4"x18" - FT	3/4"x18" - FT	N/A	(3)2x12 + (2) 3/8"x11/2" STEEL FLITCH PLATES - F	M12x26 - F
007	(2)3/4"x14" - F	3/8"x14" - F	(2)3/4"x14" - F	(2)2x12 + (1) 1/2"x11/2" STEEL FLITCH PLATES - F	M12x14 - F
008	(2)3/4"x14" - F	3/8"x14" - F	(2)3/4"x14" - F	(2)2x12 + (1) 1/2"x11/2" STEEL FLITCH PLATES - F	M12x14 - F
009	(2)3/4"x14" - D	3/8"x14" - D	(2)3/4"x14" - D	(2)2x10 + (1) 3/8"x11/2" STEEL FLITCH PLATES - D	M10x12 - D
010	(2)3/4"x16" - H	3/8"x16" - H	(3)3/4"x16" - H	(3)2x12 + (2) 3/8"x11/2" STEEL FLITCH PLATES - H	N/A
011	(2)3/4"x11/2" - D	3/8"x11/2" - D	(3)3/4"x11/2" - D	(2)2x12 + (1) 1/2"x11/2" STEEL FLITCH PLATES - D	M12x14 - D
012	(3)3/4"x16" - D	3/4"x16" - D	(4)3/4"x16" - D	(3)2x12 + (2) 3/8"x11/2" STEEL FLITCH PLATES - D	M12x14 - D
013	(2)3/4"x11/2" - D	3/8"x11/2" - D	(3)3/4"x11/2" - D	(2)2x12 + (1) 1/2"x11/2" STEEL FLITCH PLATES - D	M12x14 - D
014	(2)3/4"x16" - D	3/8"x16" - D	(3)3/4"x16" - D	(3)2x12 + (2) 3/8"x11/2" STEEL FLITCH PLATES - D	M12x14 - D
015***	(3)3/4"x11/2" - D	N/A	(3)3/4"x11/2" - D	(3)2x12 + (2) 3/8"x11/2" STEEL FLITCH PLATES - D	M12x14 - D
016	(2)3/4"x11/2" - F	3/8"x11/2" - F	(3)3/4"x11/2" - F	(2)2x12 + (1) 1/2"x11/2" STEEL FLITCH PLATES - F	M12x14 - F

BEAM NOTATION:
 - "F" INDICATES FLUSH BEAM
 - "FT" INDICATES FLUSH TOP BEAM
 - "FB" INDICATES FLUSH BOTTOM BEAM
 - "D" INDICATES DROPPED BEAM
 - "H" INDICATES DROPPED OPENING HEADER
 * REFER TO DETAIL D/SD2.0 FOR TYPICAL FLITCH BEAM CONNECTIONS
 * REFER TO DETAIL E/SD2.0 FOR TYPICAL STEEL BEAM CONNECTIONS
 * FOR FLUSH TOP BEAMS PROVIDE 2X STACKED PLATES BENEATH BEAM AS REQ'D. FASTEN PLATES IN SUCCESSION W/ (2) 3"x0.120" NAILS @ 8" O.C.
 * FOR FLUSH BOTTOM BEAMS PROVIDE 2X STACKED PLATES ATOP BEAM AS REQ'D. FASTEN PLATES IN SUCCESSION W/ (2) 3"x0.120" NAILS @ 8" O.C.
 *** - SEE PLAN FOR EXTENT OF 3-PLY BEAM





MULHERN+KULP
 RESIDENTIAL STRUCTURAL ENGINEERING
 303 Damside Ave, Building 4 - Ashebor, PA 15802
 P 715-648-8001 - mulhern+kulp.com
 NC LICENSE #C-3825

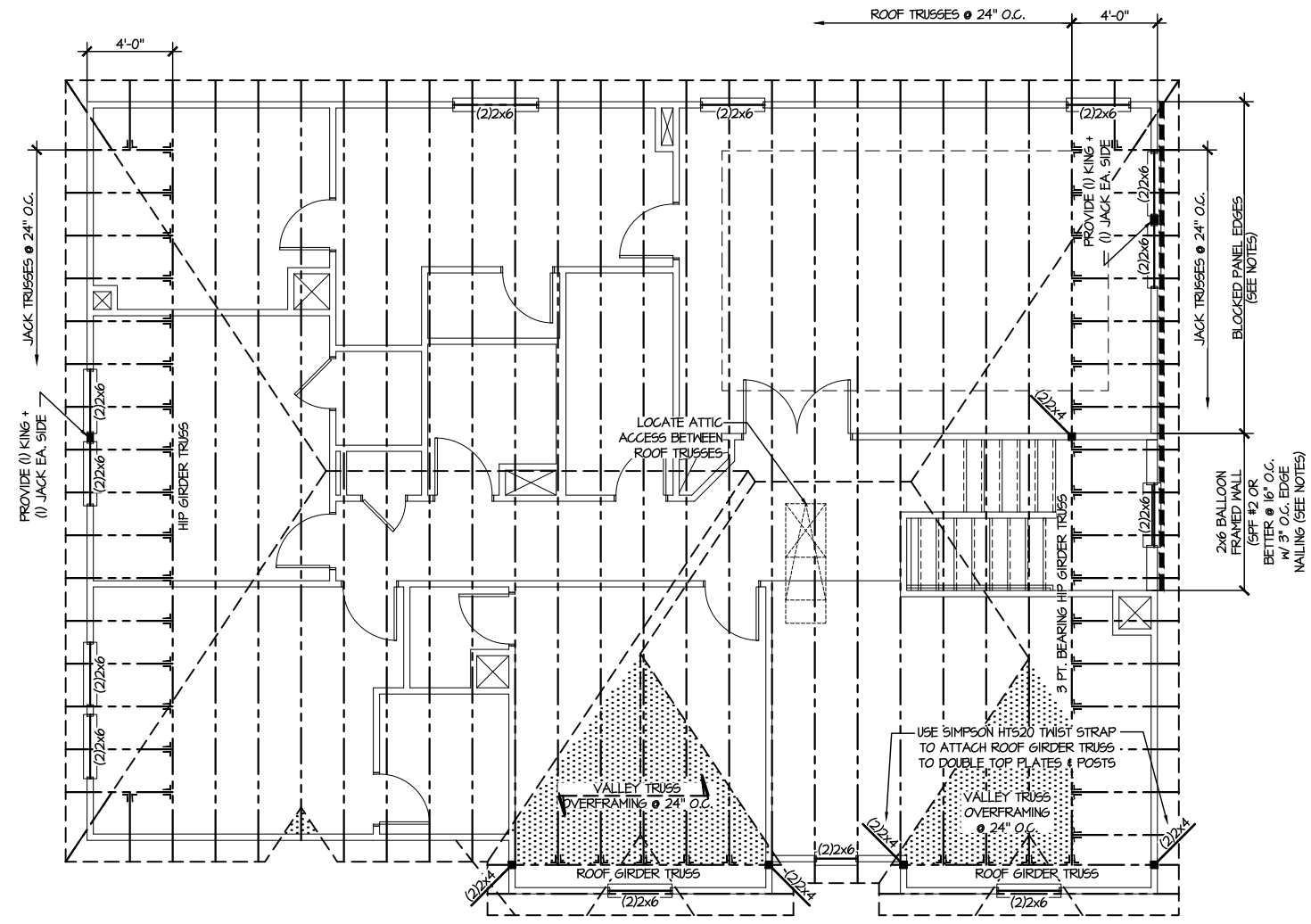
M&K project number:
 126-23035
 project mgr: JTR
 drawn by: BGL
 issue date: 07-12-23

REVISIONS:	
date:	initial:



ROOF FRAMING PLANS
 HONEYCUTT HILLS
 LOT 47 - STONEFIELD 4
 RALEIGH, NC

sheet:
S4.0



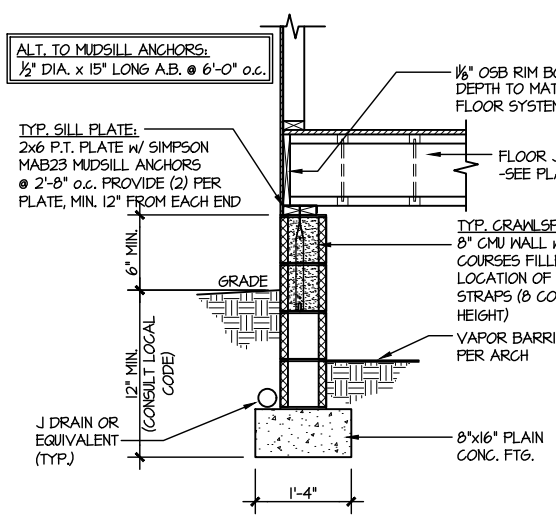
1 ROOF FRAMING PLAN
 SCALE: 1/8"=1'-0"

LEGEND	
	INTERIOR BEARING WALL
	BEARING WALL ABOVE
	BEAM / HEADER
	INDICATES SHEAR WALL & EXTENT
	EXTENT OF OVERFRAMING
	JL METAL HANGER
	* INDICATES POST ABOVE. PROVIDE SOLID BLOCKING UNDER POST OR JAMB ABOVE.
	INDICATES HOLD-DOWN OR STRAP. REFER TO SCHEDULE.

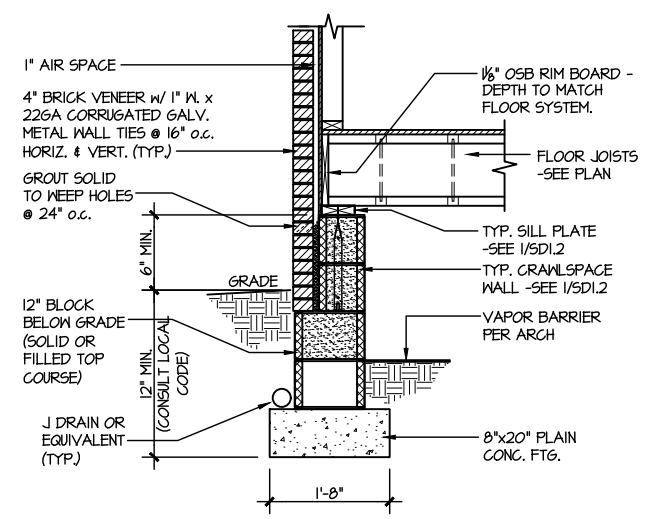
REFER TO 50.0 FOR
 TYPICAL STRUCTURAL NOTES
 & SCHEDULES



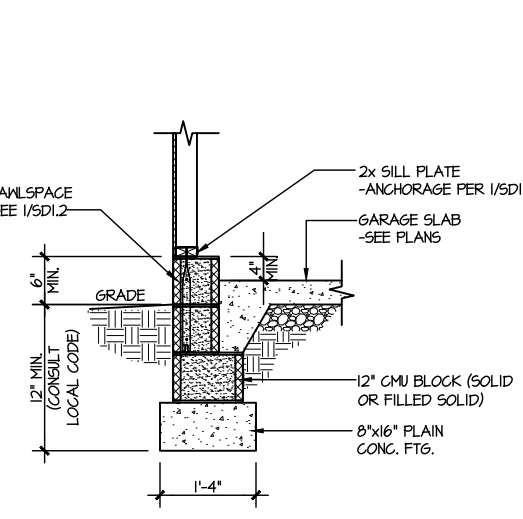
MULHERN+KULP
RESIDENTIAL STRUCTURAL ENGINEERING
300 Danville Ave., Building 4 - Aurbur, PA 15002
P 715-698-8000 - mulhern+kulp.com
NC LICENSE #C-3825



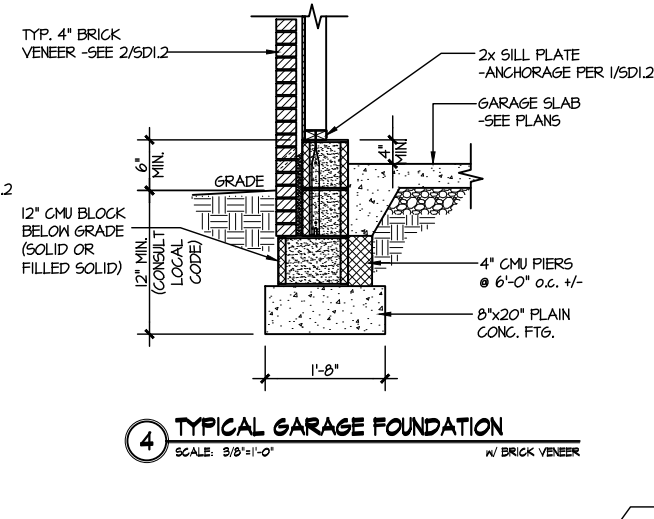
1 TYPICAL CRAWLSPACE FOUNDATION
SCALE: 3/8"=1'-0"



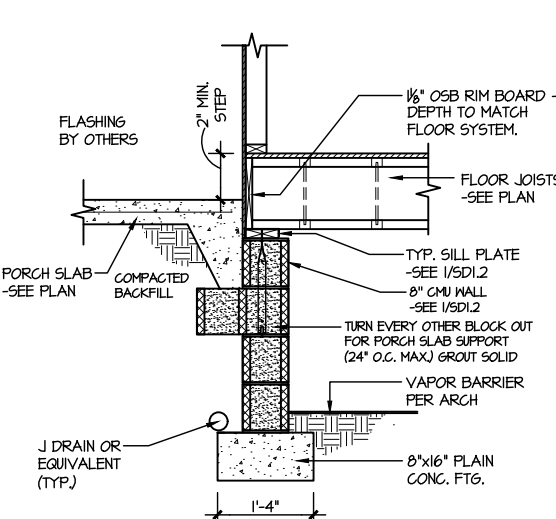
2 TYPICAL CRAWLSPACE FOUNDATION
SCALE: 3/8"=1'-0" W/ BRICK VENEER



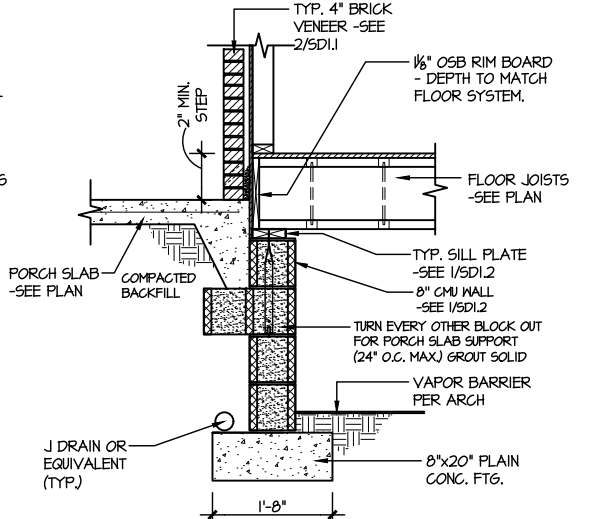
3 TYPICAL GARAGE FOUNDATION
SCALE: 3/8"=1'-0"



4 TYPICAL GARAGE FOUNDATION
SCALE: 3/8"=1'-0" W/ BRICK VENEER

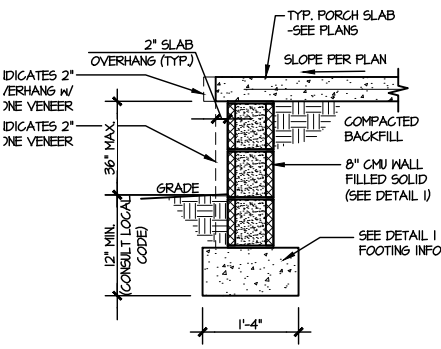


5 TYPICAL CRAWLSPACE FOUNDATION @ PORCH/PATIO SLAB
SCALE: 3/8"=1'-0" (REFER TO DETAIL 12 FOR WOOD PORCH OPTION)

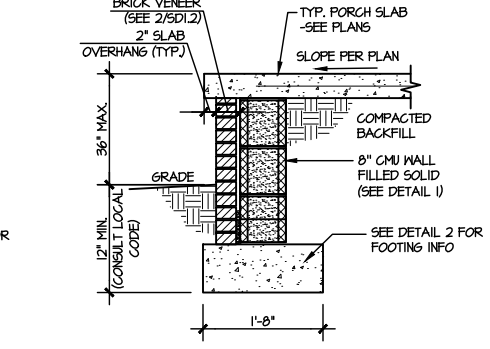


6 TYPICAL CRAWLSPACE FOUNDATION @ PORCH/PATIO SLAB
SCALE: 3/8"=1'-0" W/ BRICK VENEER

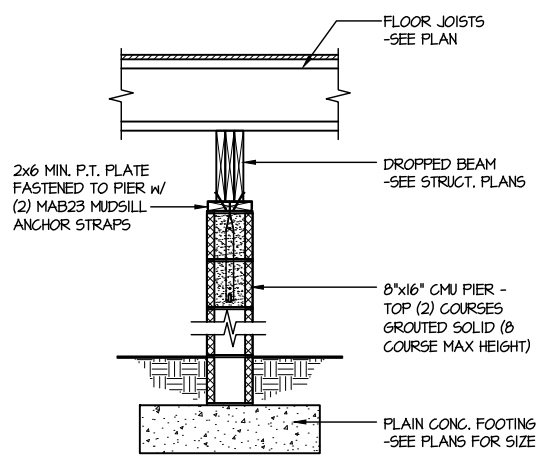
PLAIN CONC. FOOTINGS AS DIMENSIONED & SHOWN ARE MINIMUM SIZES REQUIRED & HAVE BEEN ENGINEERED. ADDITION OF CONTINUOUS REBAR OR LARGER FOOTINGS MAY BE PROVIDED AT THE DISCRETION OF THE BUILDER.



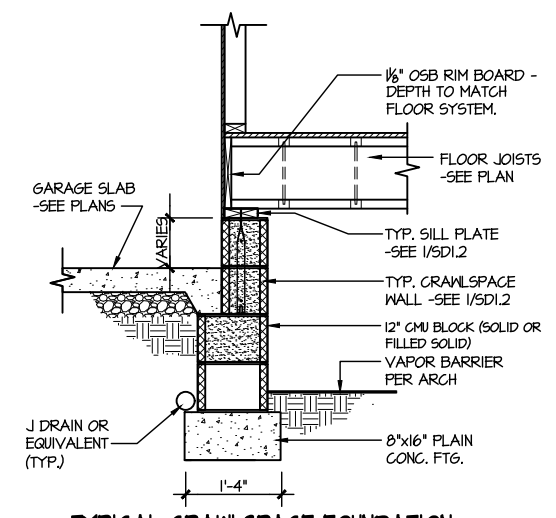
7A TYPICAL FOOTING @ PORCH SLAB
SCALE: 3/8"=1'-0"



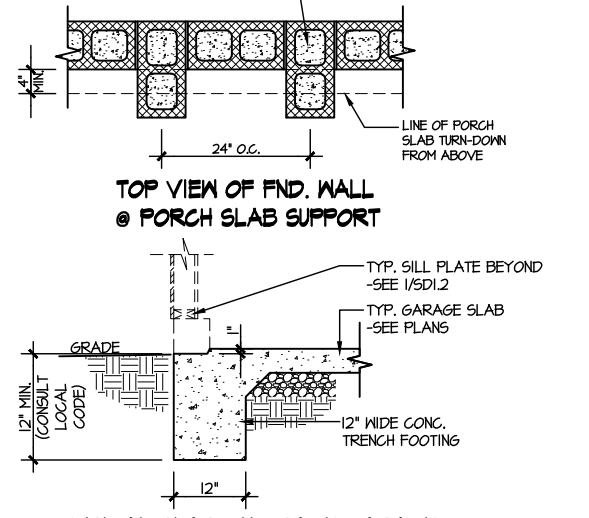
7B TYPICAL FOOTING @ PORCH SLAB
SCALE: 3/8"=1'-0" W/ BRICK VENEER



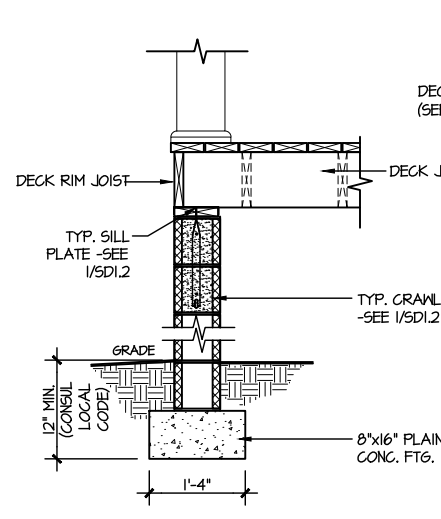
8 TYPICAL CRAWLSPACE FOUNDATION @ INTERIOR PIER
SCALE: 3/8"=1'-0"



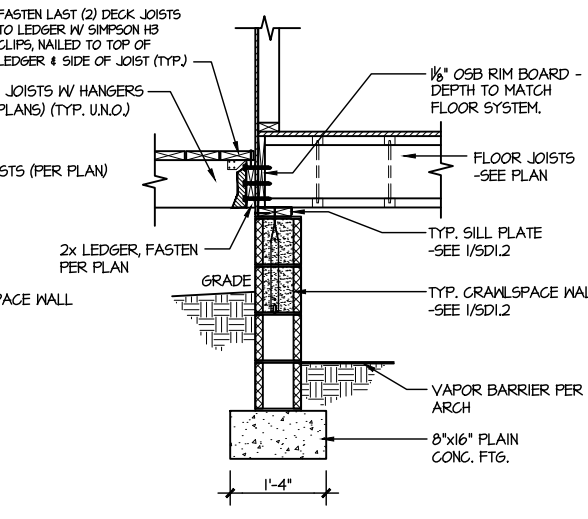
9 TYPICAL CRAWLSPACE FOUNDATION @ GARAGE
SCALE: 3/8"=1'-0"



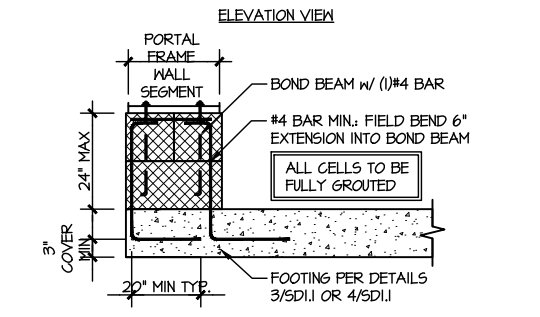
10 TYPICAL SLAB ON GRADE GARAGE ENTRY @ PERIMETER FOOTING
SCALE: 3/8"=1'-0"



11 TYPICAL CRAWLSPACE FOUNDATION @ WOOD PORCH/DECK PERIMETER
SCALE: 3/8"=1'-0"



12 TYPICAL CRAWLSPACE FOUNDATION @ WOOD PORCH/DECK
SCALE: 3/8"=1'-0"



A GARAGE PORTAL FRAME STEM WALL REINFORCEMENT
SCALE: 3/8"=1'-0"

LETTERED DETAILS ARE TYPICAL FOR THIS HOME & SHALL BE IMPLEMENTED IN ALL APPLICABLE AREAS. THESE DETAILS ARE NOT "CUT" ON THE PLANS.

NUMBERED DETAILS ARE PLAN SPECIFIC AND ARE ONLY REQUIRED WHERE SPECIFICALLY INDICATED ("CUT") ON THE PLANS.

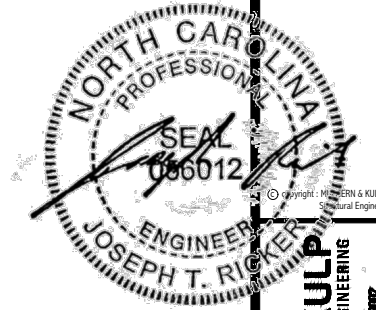
M&K project number: 126-23035
project mgr: JTR
drawn by: BGL
issue date: 07-12-23

REVISIONS:
date: initial:



FOUNDATION DETAILS
HONEYCUTT HILLS
LOT 47 - STONEFIELD 4
RALEIGH, NC

sheet: **SD1.2**



MULHERN+KULP
RESIDENTIAL STRUCTURAL ENGINEERING
308 Damside Ave. Building 4 - Ashebor, PA 15822
P 715-646-8000 - mulhern+kulp.com
NC LICENSE #C-3825



M&K project number:
126-23035

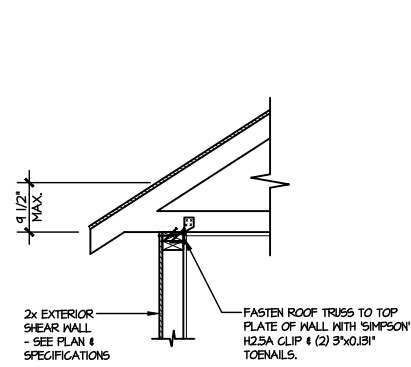
project mgr: JTR
drawn by: BGL
issue date: 07-12-23

REVISIONS:
date: initial:

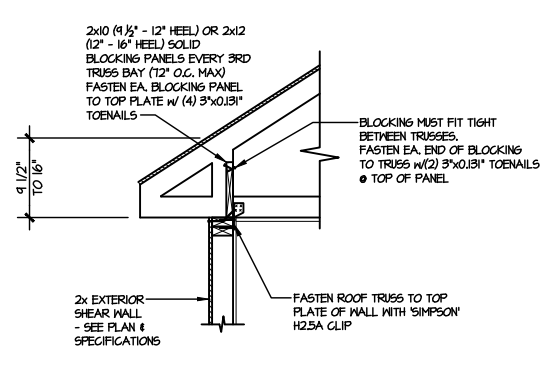
DRB HOMES

FRAMING DETAILS
HONEYCUTT HILLS
LOT 47 - STONEFIELD 4
RALEIGH, NC

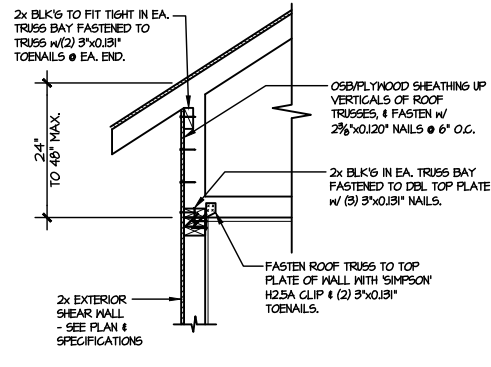
sheet:
SD2.0



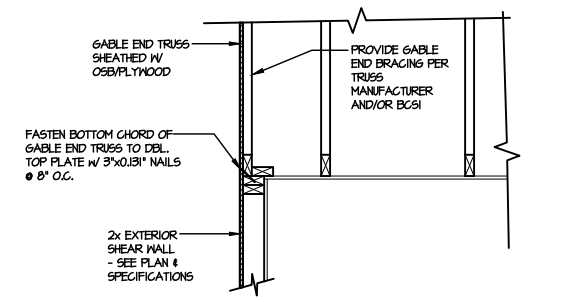
(A1) TYPICAL SHEAR TRANSFER DETAIL @ ROOF
SCALE: 3/8"=1'-0"
HEEL HEIGHT LESS THAN 9 1/2"
NO BLOCKING REQ'D



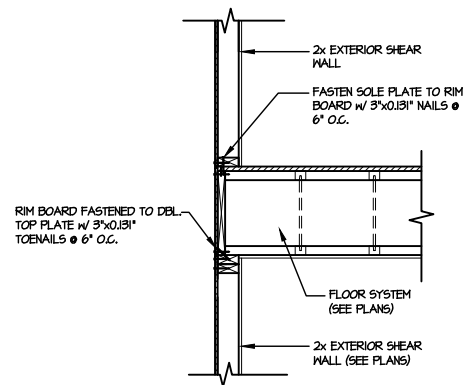
(A2) TYPICAL SHEAR TRANSFER DETAIL @ ROOF
SCALE: 3/8"=1'-0"
HEEL HEIGHT BETWEEN 9 1/2" - 16"
BLOCKING REQ'D



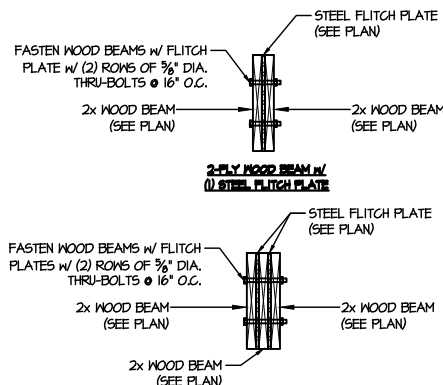
(A3) TYPICAL SHEAR TRANSFER DETAIL @ RAISED HEEL TRUSS
SCALE: 3/8"=1'-0"
HEEL HEIGHT UP TO 48" MAX.



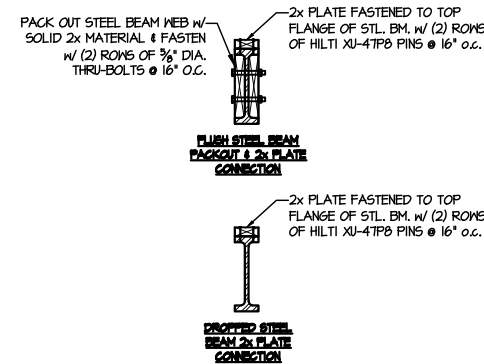
(B) TYPICAL GABLE END DETAIL
SCALE: 3/8"=1'-0"



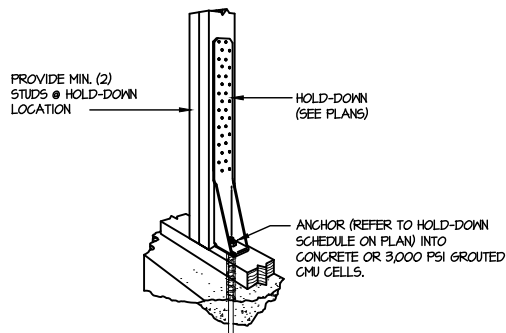
(C) TYPICAL SHEAR TRANSFER DETAIL BETWEEN FLOORS @ EXTERIOR WALL
SCALE: 3/8"=1'-0"



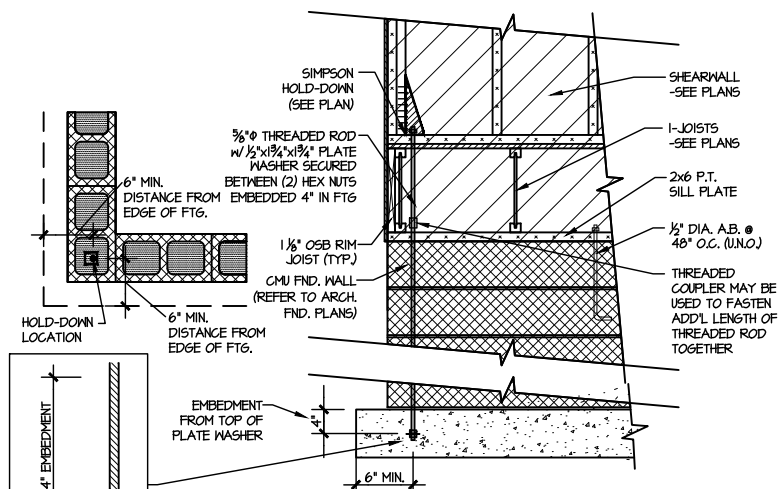
(D) TYPICAL FLITCH BEAM CONNECTION DETAIL
SCALE: 3/4"=1'-0"



(E) TYPICAL STEEL BEAM CONNECTION DETAIL
SCALE: 3/4"=1'-0"



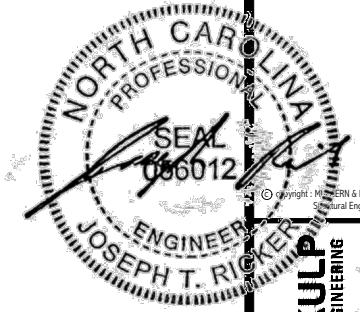
(F1) TYPICAL HOLD DOWN INSTALLATION
SCALE: N.T.S.



(F2) TYPICAL CMU FOUNDATION HOLD-DOWN INSTALLATION
SCALE: N.T.S. (CORNER SHOWN - APPLICABLE TO ALL CONDITIONS)

LETTERED DETAILS ARE TYPICAL FOR THIS HOME & SHALL BE IMPLEMENTED IN ALL APPLICABLE AREAS. THESE DETAILS ARE NOT "CUT" ON THE PLANS.

NUMBERED DETAILS ARE PLAN SPECIFIC AND ARE ONLY REQUIRED WHERE SPECIFICALLY INDICATED ("CUT") ON THE PLANS.



MULHERN+KULP
RESIDENTIAL STRUCTURAL ENGINEERING
303 Damside Ave., Building 4 - Ashebor, PA 15822
P: 715-648-0001 - mulhernkulp.com
NC LICENSE #C-3825

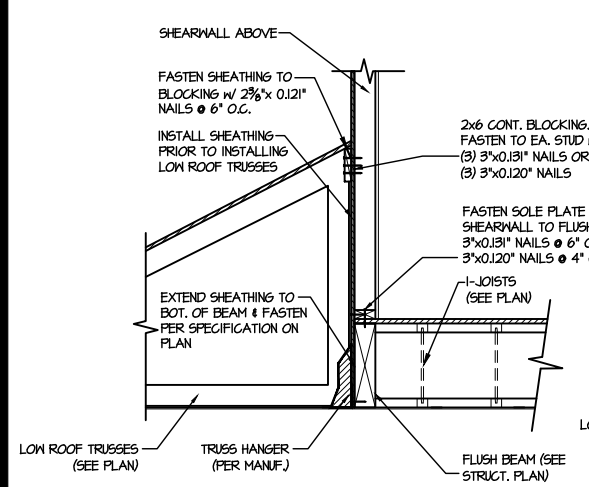
M&K project number:
126-23035
project mgr: JTR
drawn by: BGL
issue date: 07-12-23

REVISIONS:
date: initial:

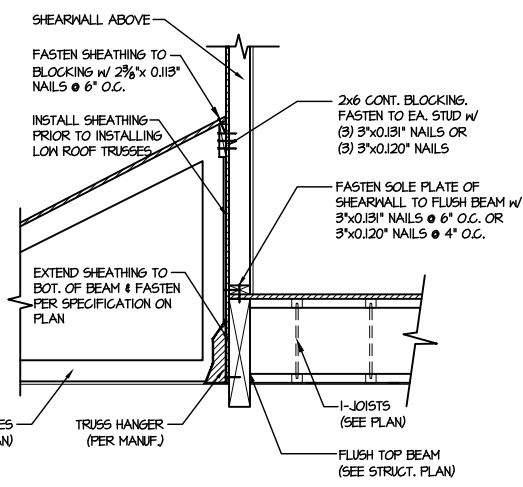
DRB HOMES

FRAMING DETAILS
HONEYCUTT HILLS
LOT 47 - STONEFIELD 4
RALEIGH, NC

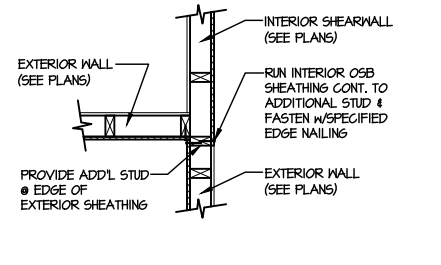
sheet:
SD2.1A



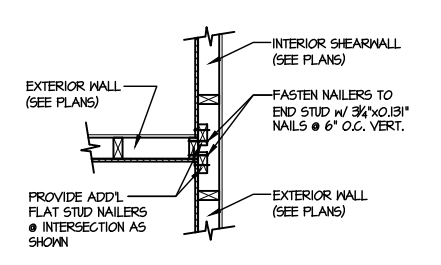
1 SHEAR TRANSFER DETAIL @ EXTERIOR SHEARWALL ABOVE
SCALE: 3/4"=1'-0"



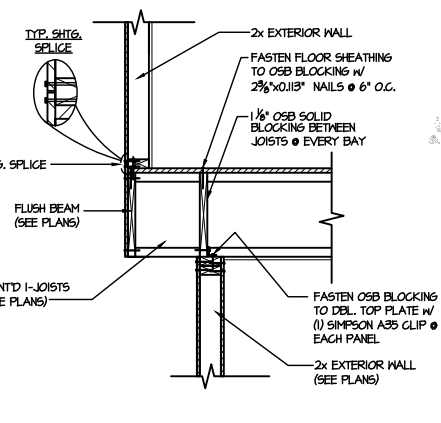
2 SHEAR TRANSFER DETAIL @ EXTERIOR SHEARWALL ABOVE
SCALE: 3/4"=1'-0"



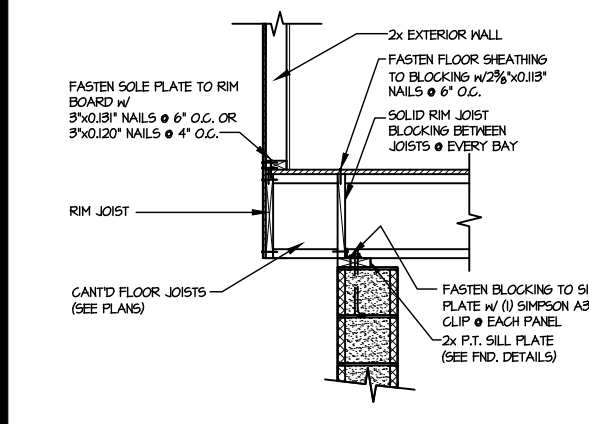
3 SHEAR TRANSFER DETAIL @ INTERSECTING INT. SHEARWALL
SCALE: 3/4"=1'-0" SHTS. OPPOSITE FACES



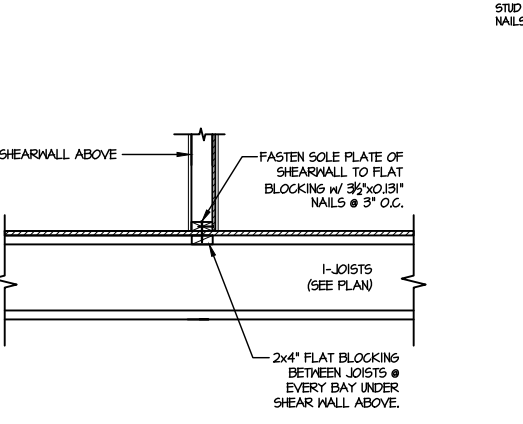
4 SHEAR TRANSFER DETAIL @ INTERSECTING INT. SHEARWALL
SCALE: 3/4"=1'-0" SHTS. ON SAME FACE



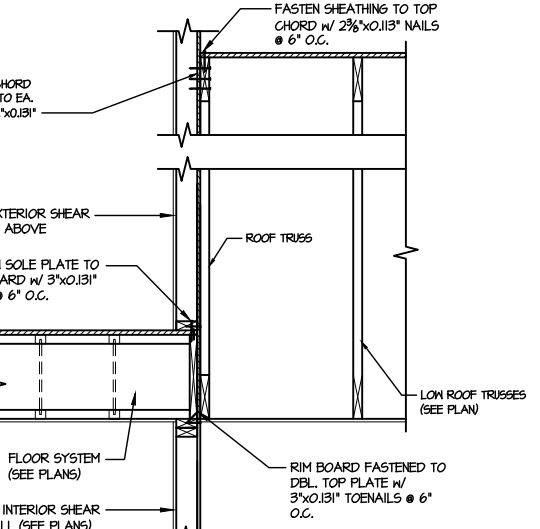
5 SHEAR TRANSFER DETAIL BETWEEN FLOORS @ CANT'D EXT. WALL
SCALE: 3/4"=1'-0" PERPENDICULAR FRAMING



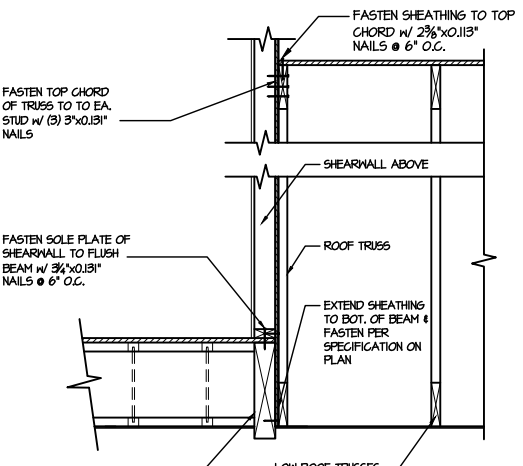
6 SHEAR TRANSFER DETAIL @ CANT'D EXTERIOR WALL
SCALE: 3/4"=1'-0"



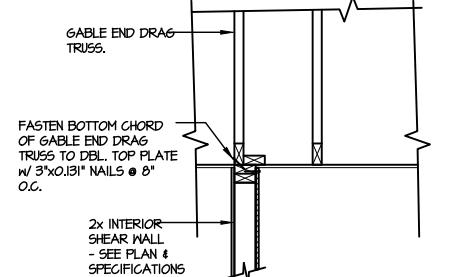
7 SHEAR TRANSFER DETAIL @ INTERIOR SHEARWALL ABOVE
SCALE: 3/4"=1'-0" PERPENDICULAR FRAMING



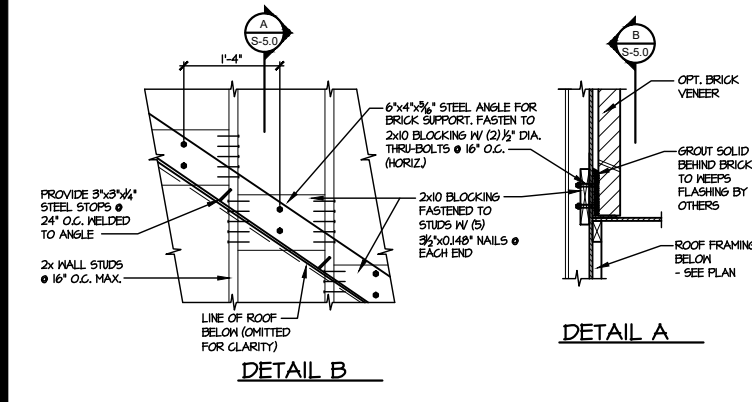
8 TYPICAL SHEAR TRANSFER DETAIL BETWEEN FLOORS @ INTERIOR WALL
SCALE: 3/4"=1'-0"



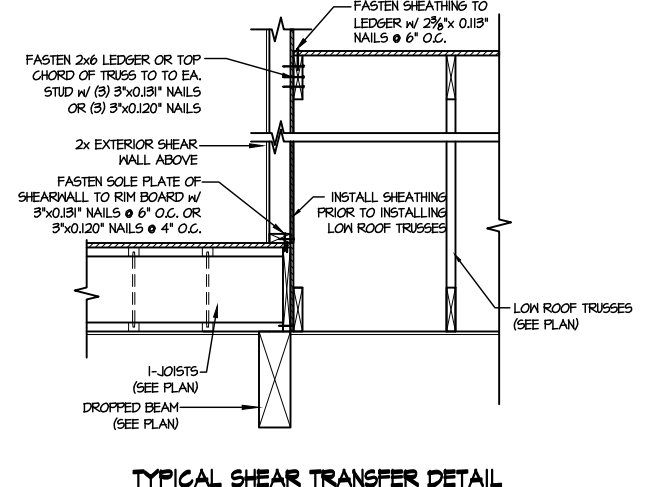
9 SHEAR TRANSFER DETAIL @ EXTERIOR SHEARWALL ABOVE
SCALE: 3/4"=1'-0"



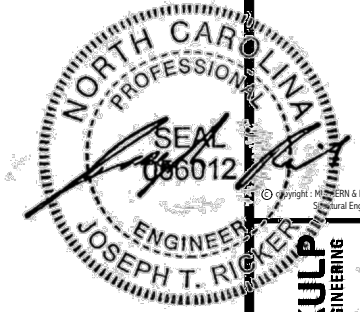
10 INTERIOR GABLE END DETAIL
SCALE: 3/4"=1'-0"



11 DETAIL SUPPORT OF BRICK VENEER
SCALE: 3/4"=1'-0"



12 TYPICAL SHEAR TRANSFER DETAIL BETWEEN FLOORS @ INTERIOR WALL
SCALE: 3/4"=1'-0"



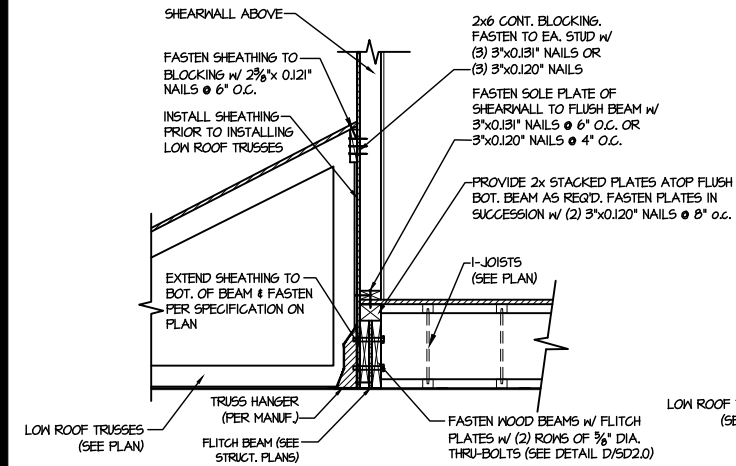
MULHERTN+KULP
RESIDENTIAL STRUCTURAL ENGINEERING
308 Damside Ave. Building 4 - Ashebor, PA 15822
P: 715-648-8000 - mulhertn+kulp.com
NC LICENSE #C-3825

M&K project number:
126-23035
project mgr: JTR
drawn by: BGL
issue date: 07-12-23

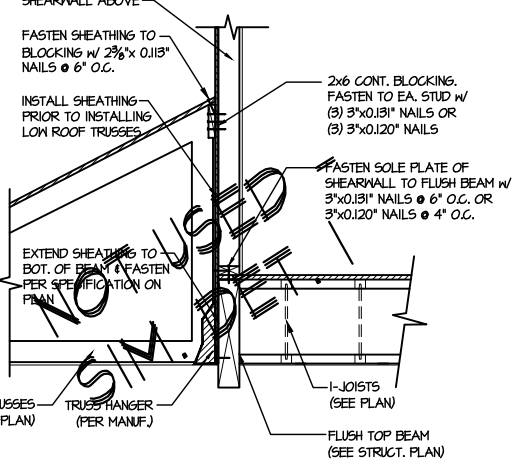
REVISIONS:
date: initial:



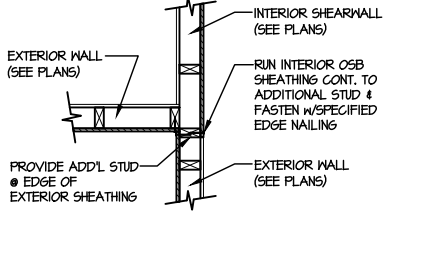
FRAMING DETAILS
HONEYCUTT HILLS
LOT 47 - STONEFIELD 4
RALEIGH, NC



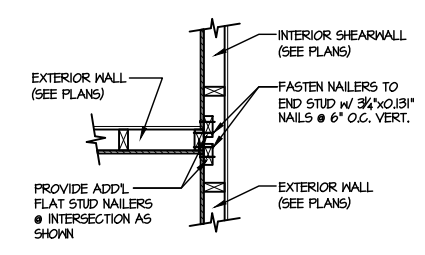
1 SHEAR TRANSFER DETAIL @ EXTERIOR SHEARWALL ABOVE
SCALE: 3/4"=1'-0"



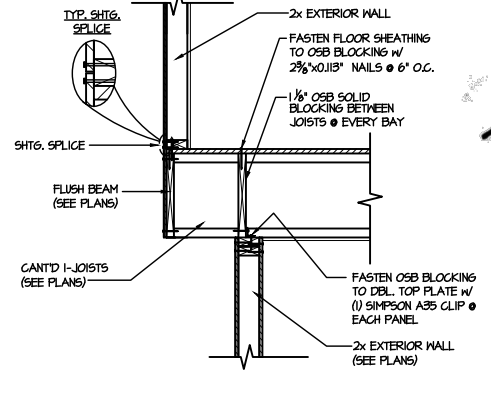
2 SHEAR TRANSFER DETAIL @ EXTERIOR SHEARWALL ABOVE
SCALE: 3/4"=1'-0"



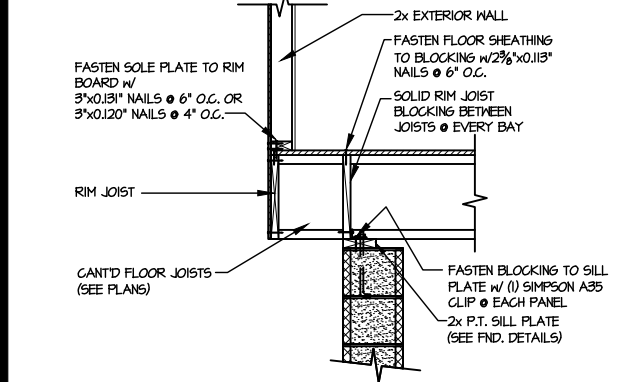
3 SHEAR TRANSFER DETAIL @ INTERSECTING INT. SHEARWALL
SCALE: 3/4"=1'-0" SHTG. OPPOSITE FACES



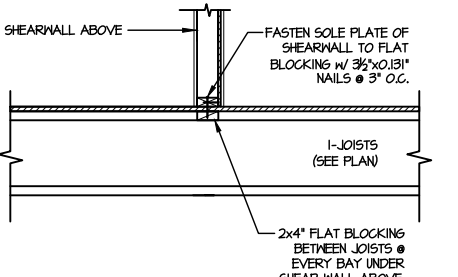
4 SHEAR TRANSFER DETAIL @ INTERSECTING INT. SHEARWALL
SCALE: 3/4"=1'-0" SHTG. ON SAME FACE



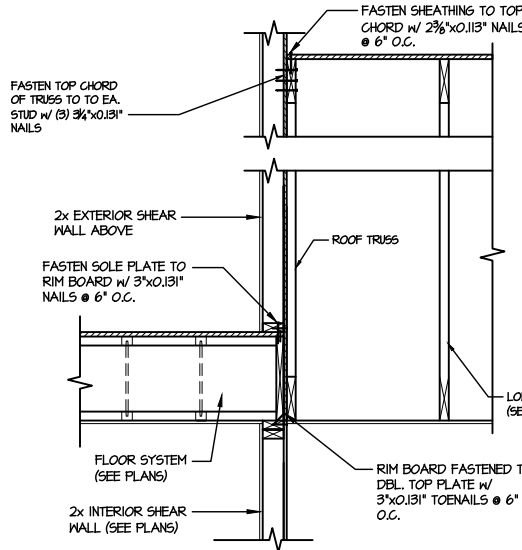
5 SHEAR TRANSFER DETAIL BETWEEN FLOORS @ CANT'D EXT. WALL
SCALE: 3/4"=1'-0" PERPENDICULAR FRAMING



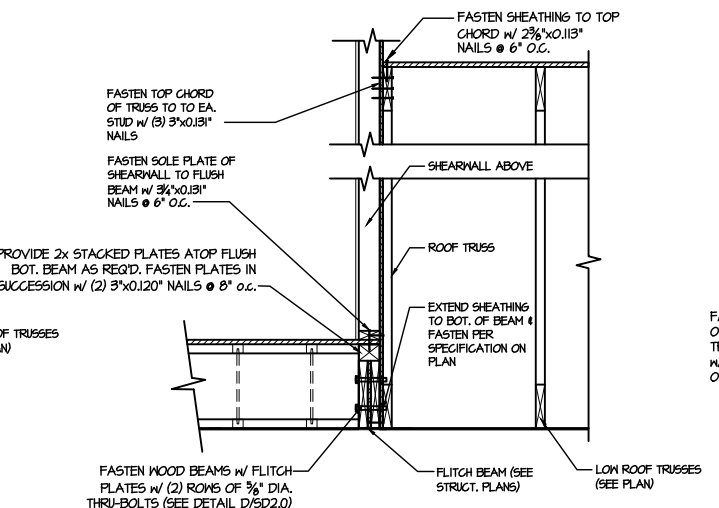
6 SHEAR TRANSFER DETAIL @ CANT'D EXTERIOR WALL
SCALE: 3/4"=1'-0"



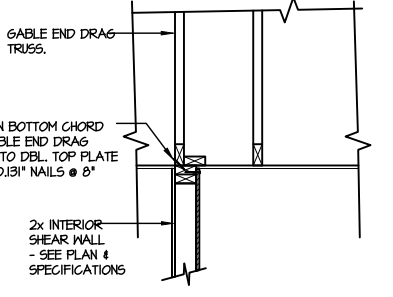
7 SHEAR TRANSFER DETAIL @ INTERIOR SHEARWALL ABOVE
SCALE: 3/4"=1'-0" PERPENDICULAR FRAMING



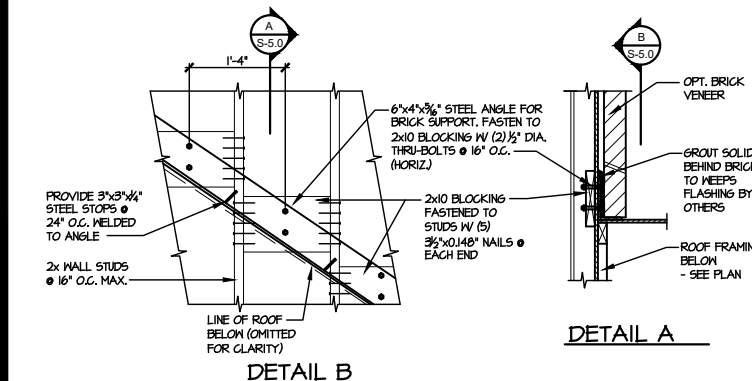
8 TYPICAL SHEAR TRANSFER DETAIL BETWEEN FLOORS @ INTERIOR WALL
SCALE: 3/4"=1'-0"



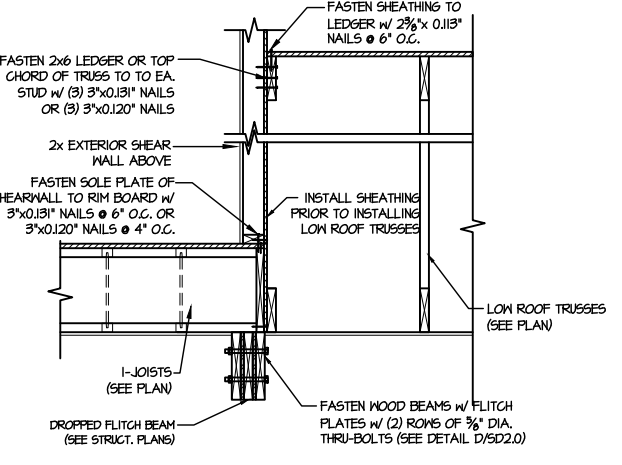
9 SHEAR TRANSFER DETAIL @ EXTERIOR SHEARWALL ABOVE
SCALE: 3/4"=1'-0"



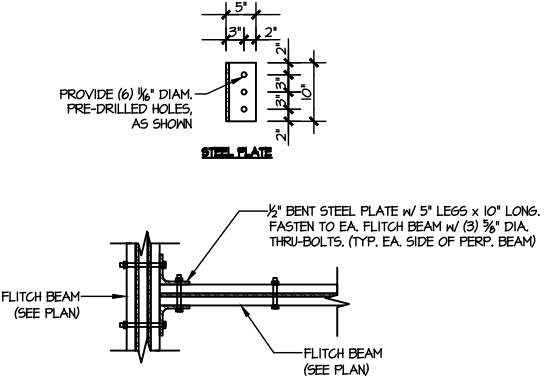
10 INTERIOR GABLE END DETAIL
SCALE: 3/4"=1'-0"



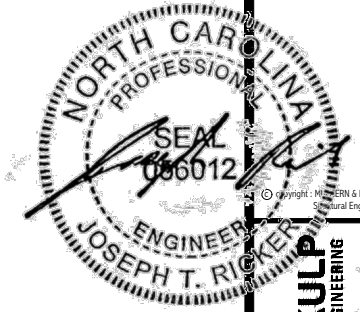
11 DETAIL SUPPORT OF BRICK VENEER
SCALE: 3/4"=1'-0"



12 TYPICAL SHEAR TRANSFER DETAIL BETWEEN FLOORS @ INTERIOR WALL
SCALE: 3/4"=1'-0"



13 TYPICAL FLITCH BEAM TO FLITCH BEAM CONNECTION DETAIL
SCALE: 3/4"=1'-0"



MULHERTN+KULP
RESIDENTIAL STRUCTURAL ENGINEERING
308 Damside Ave., Building 4 - Ashebor, PA 15822
P: 715-648-0001 - mulhertn+kulp.com
NC LICENSE #C-3825

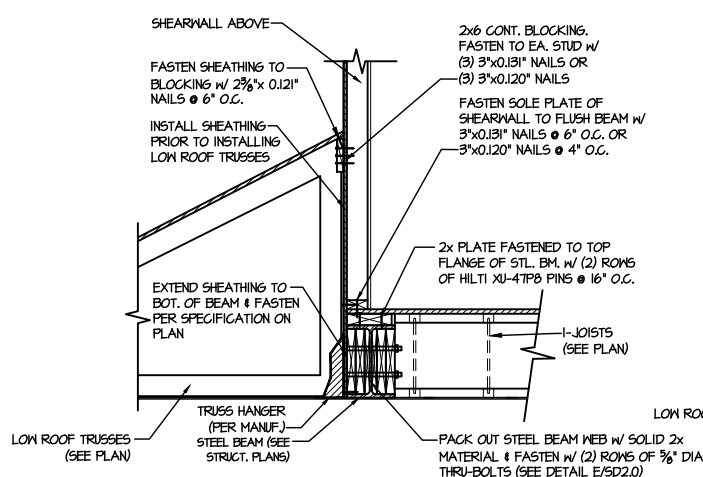
M&K project number:
126-23035
project mgr: JTR
drawn by: BGL
issue date: 07-1-23

REVISIONS:
date: initial:

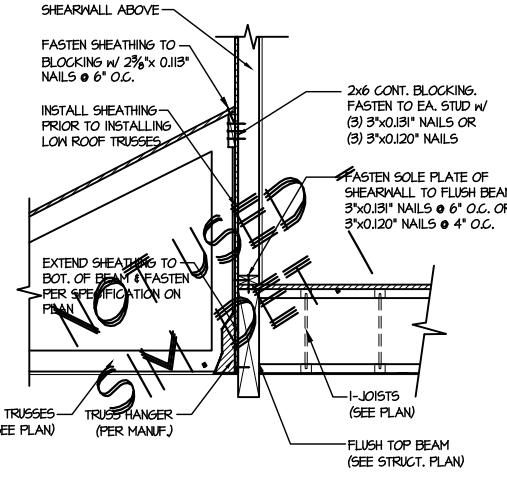
DRB
HOMES

FRAMING DETAILS
HONEYCUTT HILLS
LOT 47 - STONEFIELD 4
RALEIGH, NC

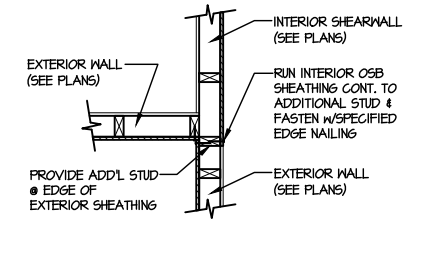
sheet:
SD2.1C



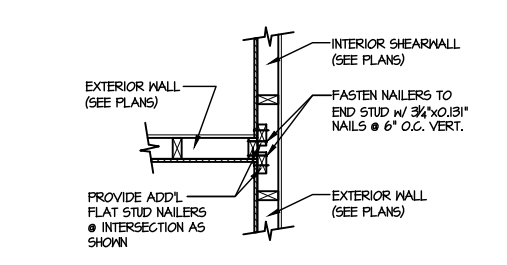
1 SHEAR TRANSFER DETAIL @ EXTERIOR SHEARWALL ABOVE
SCALE: 3/4"=1'-0"



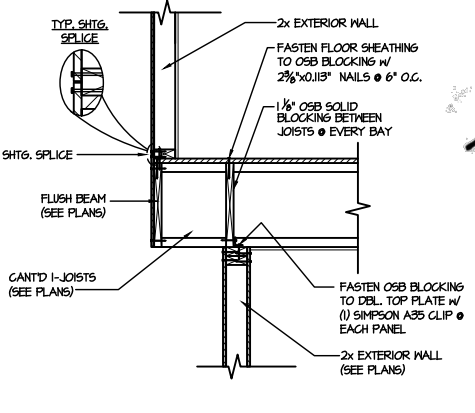
2 SHEAR TRANSFER DETAIL @ EXTERIOR SHEARWALL ABOVE
SCALE: 3/4"=1'-0"



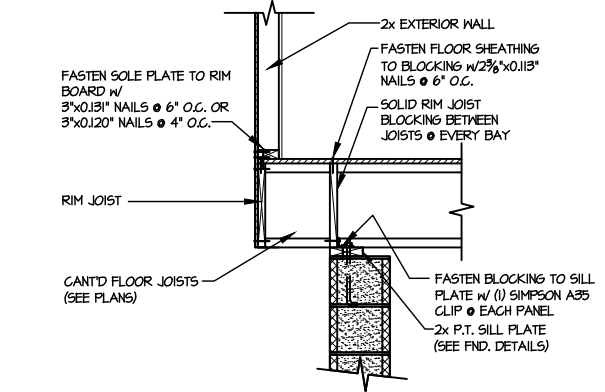
3 SHEAR TRANSFER DETAIL @ INTERSECTING INT. SHEARWALL
SCALE: 3/4"=1'-0" SHTS. OPPOSITE PAGES



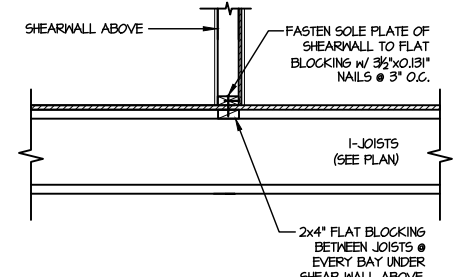
4 SHEAR TRANSFER DETAIL @ INTERSECTING INT. SHEARWALL
SCALE: 3/4"=1'-0" SHTS. ON SAME PAGE



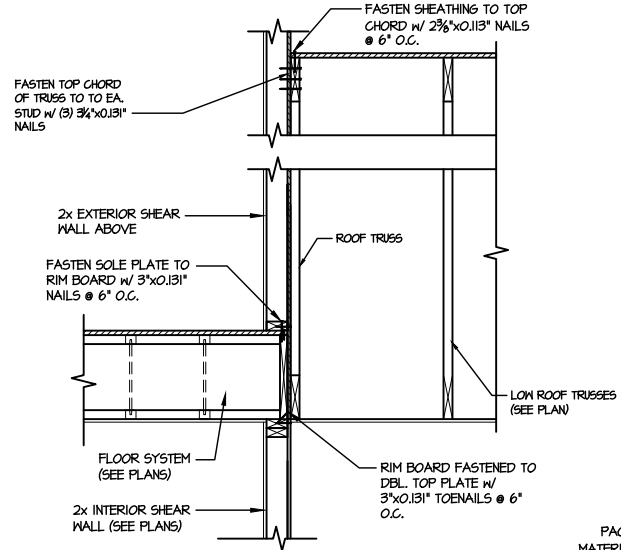
5 SHEAR TRANSFER DETAIL BETWEEN FLOORS @ CANT'D EXT. WALL
SCALE: 3/4"=1'-0" PERPENDICULAR FRAMING



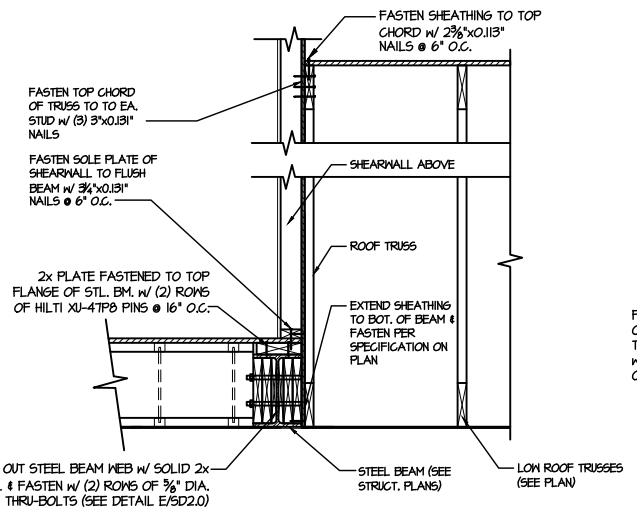
6 SHEAR TRANSFER DETAIL @ CANT'D EXTERIOR WALL
SCALE: 3/4"=1'-0"



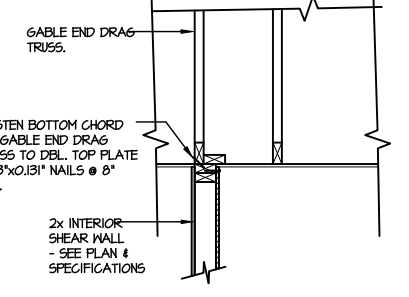
7 SHEAR TRANSFER DETAIL @ INTERIOR SHEARWALL ABOVE
SCALE: 3/4"=1'-0" PERPENDICULAR FRAMING



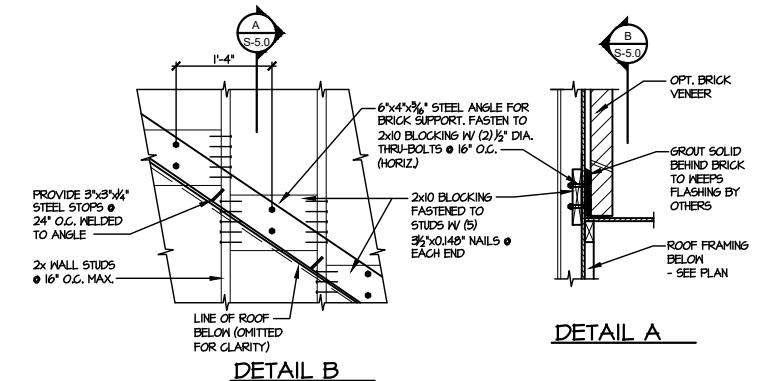
8 TYPICAL SHEAR TRANSFER DETAIL BETWEEN FLOORS @ INTERIOR WALL
SCALE: 3/4"=1'-0"



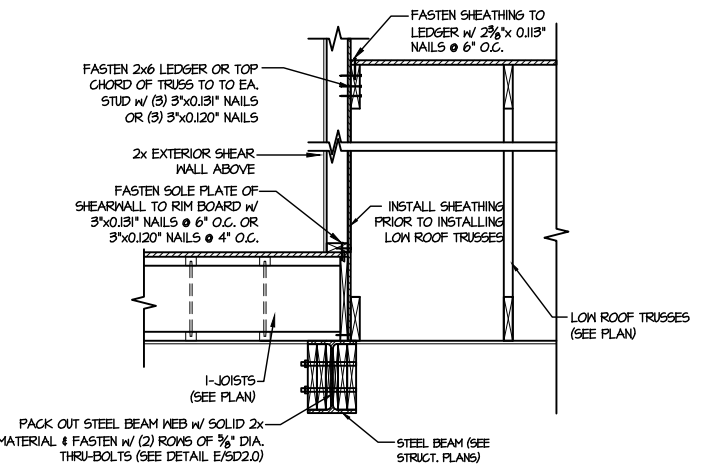
9 SHEAR TRANSFER DETAIL @ EXTERIOR SHEARWALL ABOVE
SCALE: 3/4"=1'-0"



10 INTERIOR GABLE END DETAIL
SCALE: 3/4"=1'-0"

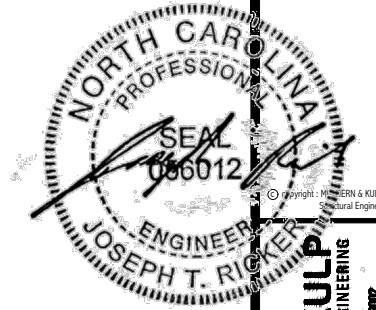


11 DETAIL SUPPORT OF BRICK VENEER
SCALE: 3/4"=1'-0"



12 TYPICAL SHEAR TRANSFER DETAIL BETWEEN FLOORS @ INTERIOR WALL
SCALE: 3/4"=1'-0"

FILE: RLH - Honeycutt Hills - Lot 47 - Structural DATE: 7/12/2023 1:52 PM



Copyright: MULHERTN & KULP Structural Engineering, Inc.

MULHERTN+KULP
RESIDENTIAL STRUCTURAL ENGINEERING
303 Damside Ave. Building 4 - Ashebor, PA 15882
P: 715-648-8001 - mulher@mk.com



M&K project number:
126-23035

project mgr: JTR
drawn by: BGL
issue date: 07-12-23

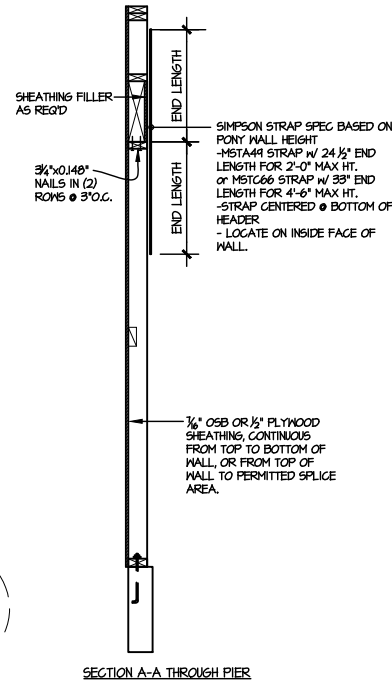
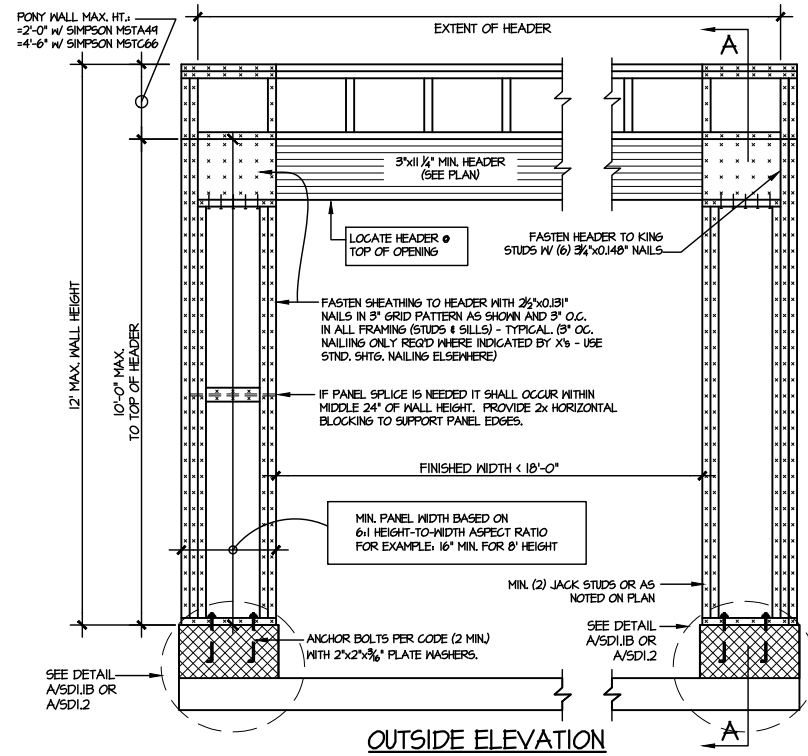
REVISIONS:
date: initial:



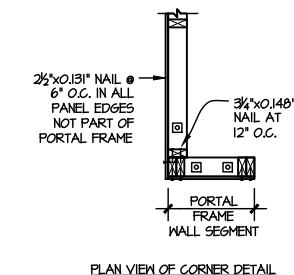
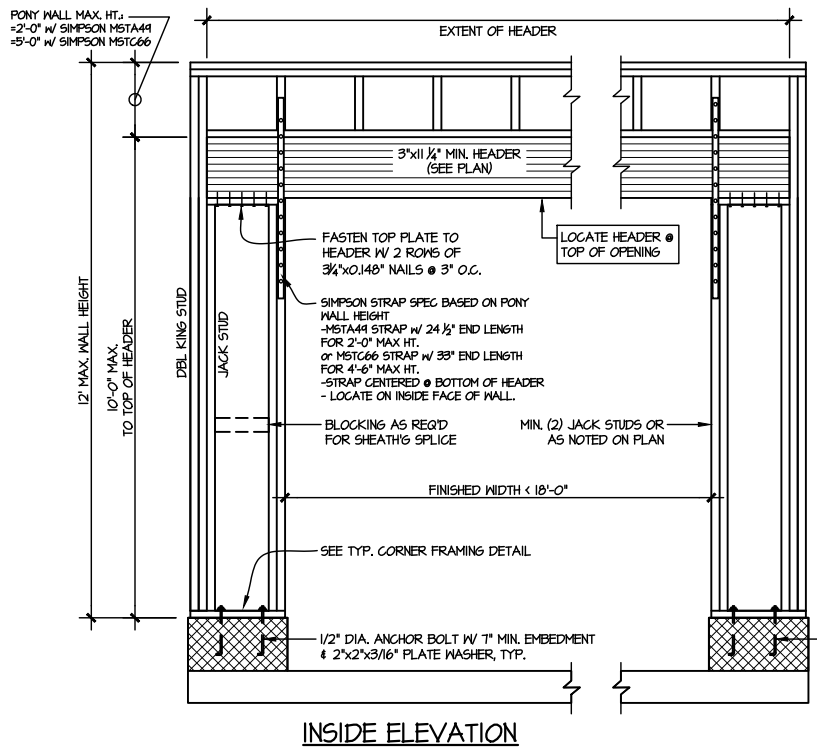
FRAMING DETAILS
HONEYCUTT HILLS
LOT 47 - STONEFIELD 4
RALEIGH, NC

sheet:

SD2.2

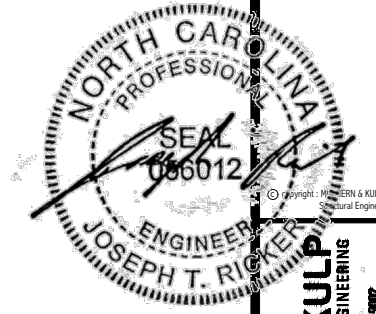


NOTE: ALL SHEATHABLE AREAS OF EXTERIOR WALL SHALL BE FULLY SHEATHED WITH 1/2" PLYWOOD OR 1/4" OSB



ALTERNATIVE TO 1/2" DIA. ANCHOR BOLT:
1/2" DIA. THREADED ROD EPOXY SET
W/ 1/4" O.C. EMBED. (MIN) UTILIZING HILTI HY200 EPOXY ANCHORING SYSTEM (OR EQUAL)

TWO SIDED GARAGE PORTAL FRAME BRACING
ELEVATION ON CMU STEM
2 SCALE: N.T.S.



MULHERN+KULP
RESIDENTIAL STRUCTURAL ENGINEERING
310 Duneside Ave, Building 4 - Ashebor, PA 15802
P 215-948-8001 - mulhern+kulp.com
NC LICENSE #C-3825



M&K project number:
126-23035

project mgr: JTR
drawn by: BGL
issue date: 07-12-23

REVISIONS:
date: initial:



FRAMING DETAILS
HONEYCUTT HILLS
LOT 47 - STONEFIELD 4
RALEIGH, NC

sheet:
SD3.0

