

THESE DRAWINGS ARE EXACTLY AS SHOWN AND SHALL BE CONSIDERED AS SUCH.

E

D

C

B

A

MCKIM & CREED
 Venture IV, 1730 Varsity Dr #500
 Raleigh, NC 27606
 919.233.8091 (Voice)
 919.233.8031 (Fax)
 NC License # F-1222

Designed TDR Drawn JMW
 Checked DJW Date 07/20/23
 Project No. 16607-0028

THIS DRAWING IS AN INSTRUMENT OF SERVICE. THE DRAWING AND INFORMATION HEREON IS THE PROPERTY OF MCKIM & CREED, INC. ANY REPRODUCTION, ALTERATION OR USE FOR OTHER THAN THE INTENDED PROJECT WITHOUT THE WRITTEN CONSENT OF MCKIM & CREED, INC. IS EXPRESSLY FORBIDDEN. COPYRIGHT 2023 MCKIM & CREED, INC.

THE KEITH CORPORATION

CAPE FEAR VALLEY HEALTH

HARNETT HEALTH

LS3P

434 FAYETTEVILLE STREET SUITE 1700
 RALEIGH, NORTH CAROLINA 27601
 TEL. 919.829.2700 FAX. 919.829.2730
 WWW.LS3P.COM



COPYRIGHT 2022 ALL RIGHTS RESERVED. PRINTED OR ELECTRONIC DRAWINGS AND DOCUMENTATION MAY NOT BE REPRODUCED IN ANY FORM WITHOUT WRITTEN PERMISSION FROM LS3P ASSOCIATES LTD.

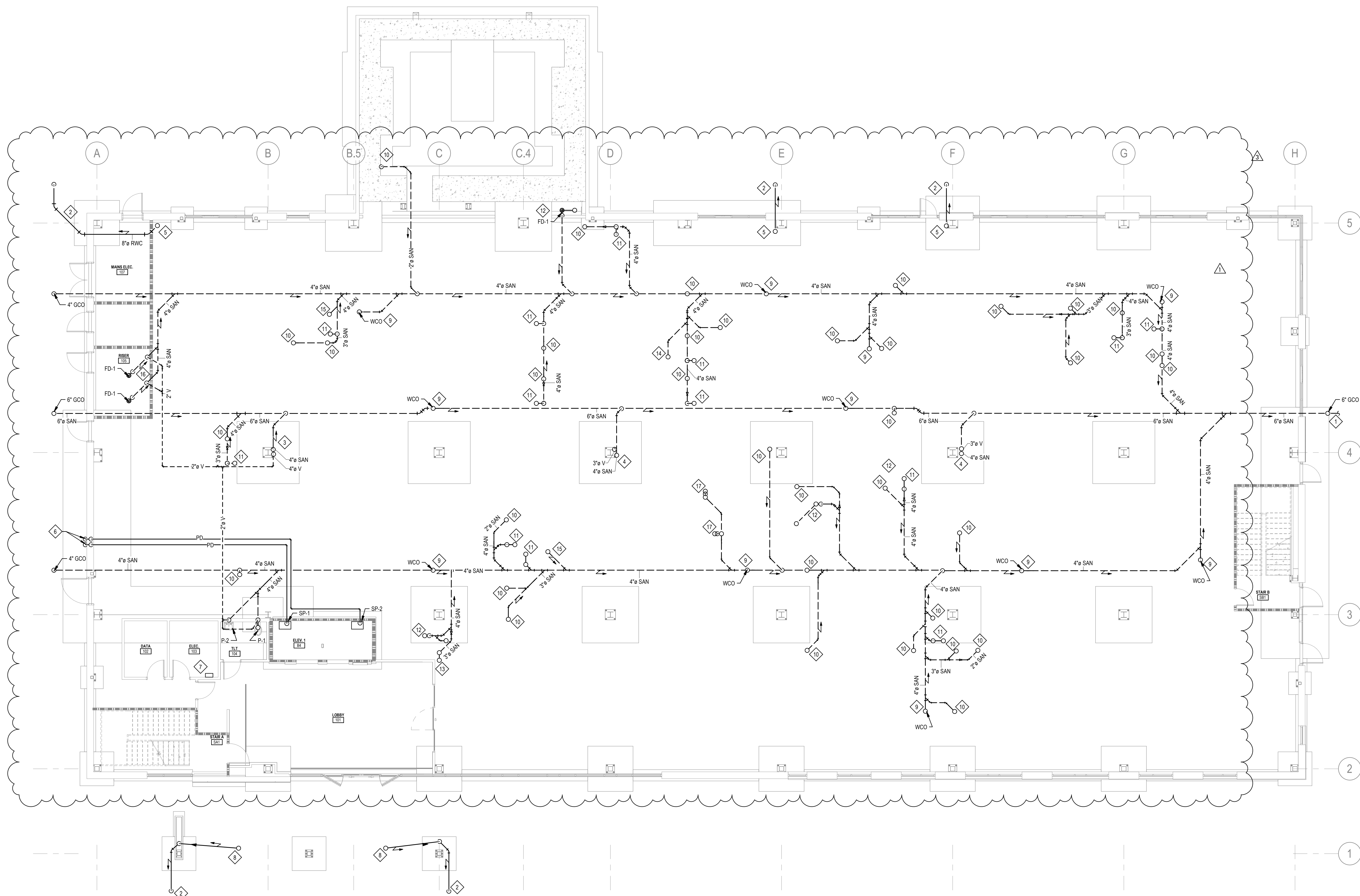
CFVH HARNETT MOB - Core & Shell
 225 Brightwater Drive, Lillington, NC 27546
 LSP PROJECT: 8403-225630

DATE	DESCRIPTION
1 2023.07.13	RFP 01
3 2023.08.25	RFP 02

SHEET NAME:
PLUMBING - LEVEL 1 - SANITARY PLAN

ORIG SUBMISSION: 2023-05-12

SHEET: **P111**



1 SANITARY FIRST FLOOR PLAN
 SCALE: 1/8" = 1'-0"

GENERAL SHEET NOTES:

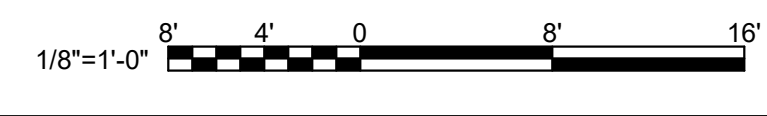
- ALL NEW FIXTURE PIPING SHOWN ON PLANS SHALL BE SIZED AS SPECIFIED IN THE FIXTURE SCHEDULE FOUND ON P001 OR AS NOTED.
- EXTEND ROOF DRAIN PIPING TO A MINIMUM OF 5' FROM BUILDING ENVELOP. INVERT STORM-3 BELOW BUILDING SLAB AND CAP WITH CLEANOUT FOR FUTURE CONNECTION TO UTILITY. SEE CIVIL PLANS FOR CONNECTION.
- 4" SANITARY PIPE AND 4" VENT UP IN WET COLUMN TO UPPER FLOORS. ROUTE PIPING TIGHT TO COLUMN. SEE P112 AND P113 FOR CONTINUATION. PROVIDE CLEANOUT AT BASE OF SANITARY RISER IN ACCORDANCE WITH CHAPTER 7, SECTION 708 OF NCPD.
- 4" SANITARY PIPE AND 3" VENT UP IN WET COLUMN TO UPPER FLOORS. ROUTE PIPING TIGHT TO COLUMN. SEE P112 AND P113 FOR CONTINUATION. PROVIDE CLEANOUT AT BASE OF SANITARY RISER IN ACCORDANCE WITH CHAPTER 7, SECTION 708 OF NCPD.
- PRIMARY ROOF DRAIN LEADER DOWN FROM ROOF TO BELOW SLAB.
- SUMP PUMP DISCHARGE LINE ROUTED DOWN IN WALL AND OUT TO EXTERIOR OF BUILDING. TURN PIPE DOWN, 12" ABOVE FINISHED SLAB TO SPILL ONTO GRADE. GC SHALL PROVIDE WITH SPLASH BLOCK. SEE DETAIL 6P300 FOR ADDITIONAL INFORMATION.
- ELEVATOR SUMP PUMP CONTROLLERS. MOUNT STACKED ON WALL. SEE DETAIL 6P300 FOR ADDITIONAL INFORMATION.

NEW WORK KEYED NOTES:

- 3"x4" DOWNSPOUT, DOWN FROM 2" ROOF DRAIN ABOVE. ROUTE DOWNSPOUT DOWN TIGHT TO COLUMN TO 4" RAIN LEADER BELOW GRADE.
- PROVIDE 3" WALL CLEANOUT ROUGH-IN AT FUTURE WALL. PROVIDE WITH TEMPORARY CAP IN STUB UP.
- 2" SANITARY ROUGH-IN FOR FUTURE HANDWASH SINK/LAVATORY.
- 3" SANITARY ROUGH-IN FOR FUTURE FLANGE CONNECTION TO WATER CLOSET. 2" VENT TAPPED OFF 3" SANITARY PIPING AND STUBBED UP AT FUTURE WALL FOR FUTURE CONNECTION.
- 4" SANITARY ROUGH-IN FOR FUTURE FLOOR DRAIN. 2" VENT TAPPED OFF 4" SANITARY PIPING AND STUBBED UP AT FUTURE WALL FOR FUTURE CONNECTION.
- 3" SANITARY ROUGH-IN FOR FUTURE MOPSINK. 2" VENT TAPPED OFF 3" SANITARY PIPING AND STUBBED UP AT FUTURE WALL FOR FUTURE CONNECTION.
- 3" SANITARY ROUGH-IN FOR FUTURE HANDWASH SINKS, MOUNTED BACK TO BACK.
- 2" SANITARY ROUGH-IN FOR FUTURE ELECTRIC WATER COOLER.
- ROUTE VENT EXPOSED ALONG WALL IN RISER ROOM TO ABOVE CEILING.
- 2" SANITARY ROUGH-IN FOR FUTURE WALL BOX. 2" SANITARY PIPE UP IN WALL. TAP OFF TO FUTURE WALL BOX LOCATION AND PROVIDE WITH PTRAP IN WALL. EXTEND PIPING UP IN WALL FOR FUTURE VENT CONNECTION. SEE DETAIL 13P301 FOR ADDITIONAL INFORMATION.

FIRE RATED WALL LEGEND

[Symbol]	30 MIN-RATED PARTITION
[Symbol]	1 HOUR-RATED PARTITION
[Symbol]	2 HOUR-RATED PARTITION
[Symbol]	3 HOUR-RATED PARTITION
[Symbol]	4 HOUR-RATED PARTITION



THESE DRAWINGS ARE THE PROPERTY OF MCKIM & CREED, INC. NO REPRODUCTION OR TRANSMISSION IN ANY FORM OR BY ANY MEANS, ELECTRONIC OR MECHANICAL, INCLUDING PHOTOCOPYING, RECORDING, OR BY ANY INFORMATION STORAGE AND RETRIEVAL SYSTEM, IS PERMITTED WITHOUT THE WRITTEN PERMISSION OF MCKIM & CREED, INC.

E

D

C

B

A

MCKIM & CREED
 Venture IV, 1730 Varsity Dr #500
 Raleigh, NC 27606
 919.233.8091 (Voice)
 919.233.8031 (Fax)
 NC License # F-1222

Designed TDR Drawn JMW
 Checked DJW Date 07/20/23
 Project No. 16607-0029

THIS DRAWING IS AN INSTRUMENT OF SERVICE. THE DRAWING AND INFORMATION HEREON IS THE PROPERTY OF MCKIM & CREED, INC. NO REPRODUCTION, ALTERATION OR USE FOR OTHER THAN THE INTENDED PROJECT WITHOUT WRITTEN CONSENT OF MCKIM & CREED, INC. IS EXPRESSLY FORBIDDEN. COPYRIGHT 2023 MCKIM & CREED, INC.

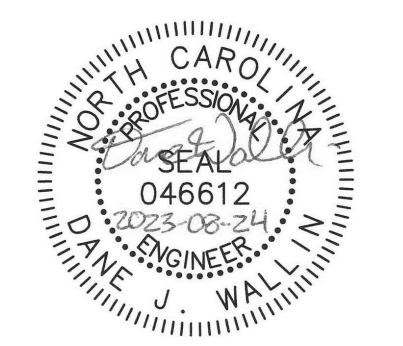
THE KEITH CORPORATION

CAPE FEAR VALLEY HEALTH

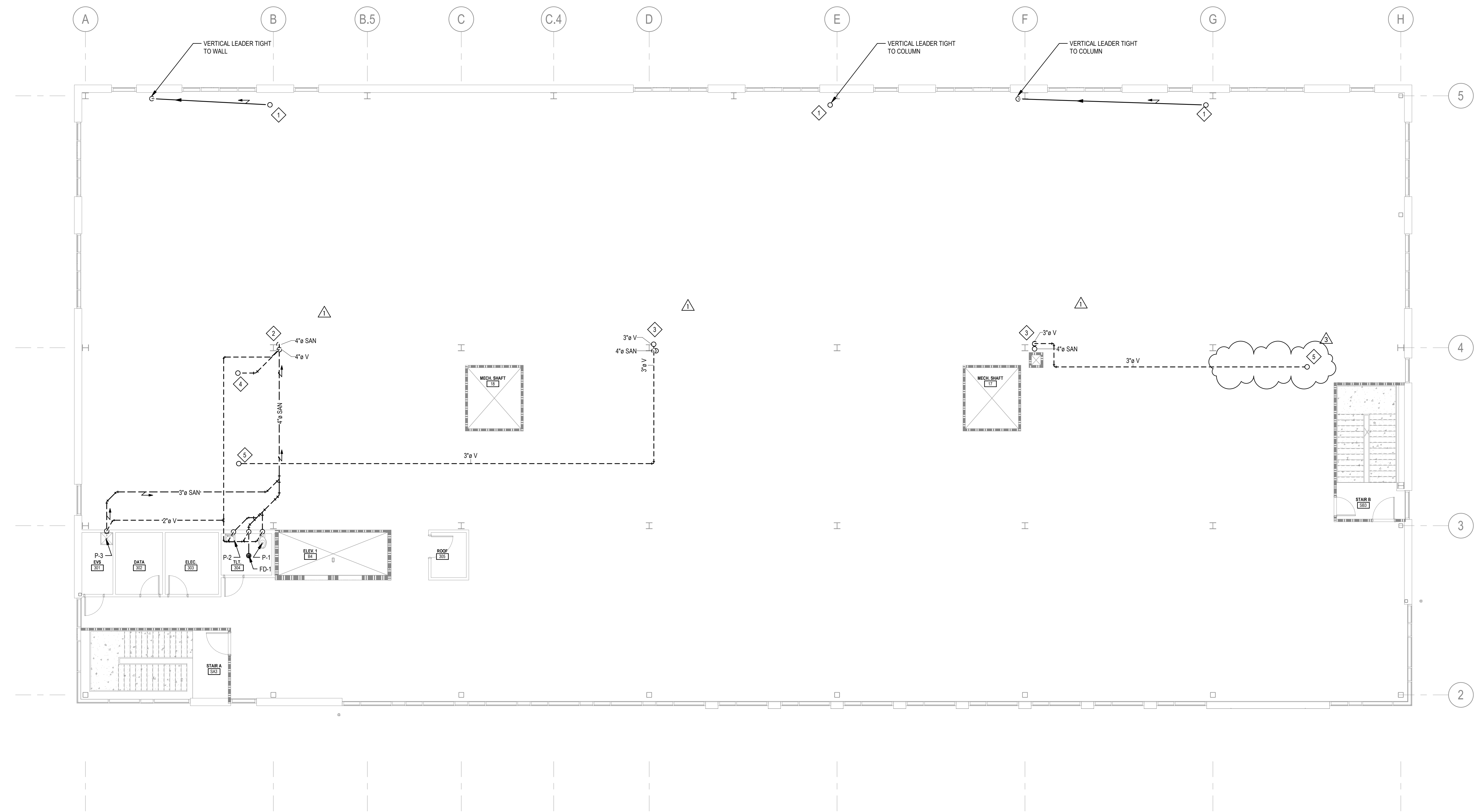
HARNETT HEALTH

LS3P

434 FAYETTEVILLE STREET SUITE 1700
 RALEIGH, NORTH CAROLINA 27601
 TEL. 919.829.2700 FAX. 919.829.2730
 WWW.LS3P.COM



COPYRIGHT 2022 ALL RIGHTS RESERVED. PRINTED OR ELECTRONIC DRAWINGS AND DOCUMENTATION MAY NOT BE REPRODUCED IN ANY FORM WITHOUT WRITTEN PERMISSION FROM LS3P ASSOCIATES LTD.

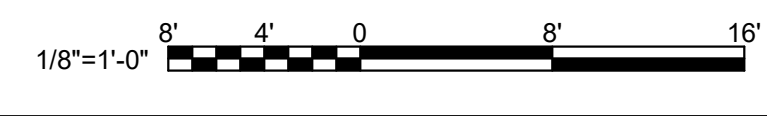


1 SANITARY THIRD FLOOR PLAN
 SCALE: 1/8" = 1'-0"

- GENERAL SHEET NOTES:**
- ALL NEW FIXTURE PIPING SHOWN ON PLANS SHALL BE SIZED AS SPECIFIED IN THE FIXTURE SCHEDULE FOUND ON P001.
- NEW WORK KEYED NOTES:**
- PRIMARY ROOF DRAIN LEADER DOWN FROM ROOF AND ROUTED ABOVE THIRD FLOOR CEILING TO COLUMN. ROUTE AS NOTED AND DOWN TO FIRST FLOOR.
 - 4" SANITARY AND 4" VENT UP IN WET COLUMN FROM FLOOR BELOW. ROUTE PIPING TIGHT TO COLUMN.
 - 4" SANITARY AND 3" VENT UP IN WET COLUMN FROM FLOOR BELOW. ROUTE PIPING TIGHT TO COLUMN.
 - 4" VENT THROUGH ROOF. TRANSITION ABOVE CEILING AS NECESSARY TO AVOID CONFLICTING WITH ROOF SCREEN. SEE P114 FOR ROOF PLAN.
 - 3" VENT THROUGH ROOF. COORDINATE WITH ROOF SCREEN, SEE P114 FOR ROOF PLAN.

FIRE RATED WALL LEGEND

[Symbol]	30 MIN-RATED PARTITION
[Symbol]	1 HOUR-RATED PARTITION
[Symbol]	2 HOUR-RATED PARTITION
[Symbol]	3 HOUR-RATED PARTITION
[Symbol]	4 HOUR-RATED PARTITION



CFVH HARNETT MOB - Core & Shell
 225 Brightwater Drive, Lillington, NC 27546
 LSP PROJECT: 8403-225630

NO.	DATE	DESCRIPTION
1	2023.07.13	RFP 01
3	2023.08.25	RFP 02

SHEET NAME:
 PLUMBING - LEVEL 3 - SANITARY PLAN

ORIG SUBMISSION: 2023-05-12

SHEET: **P113**

