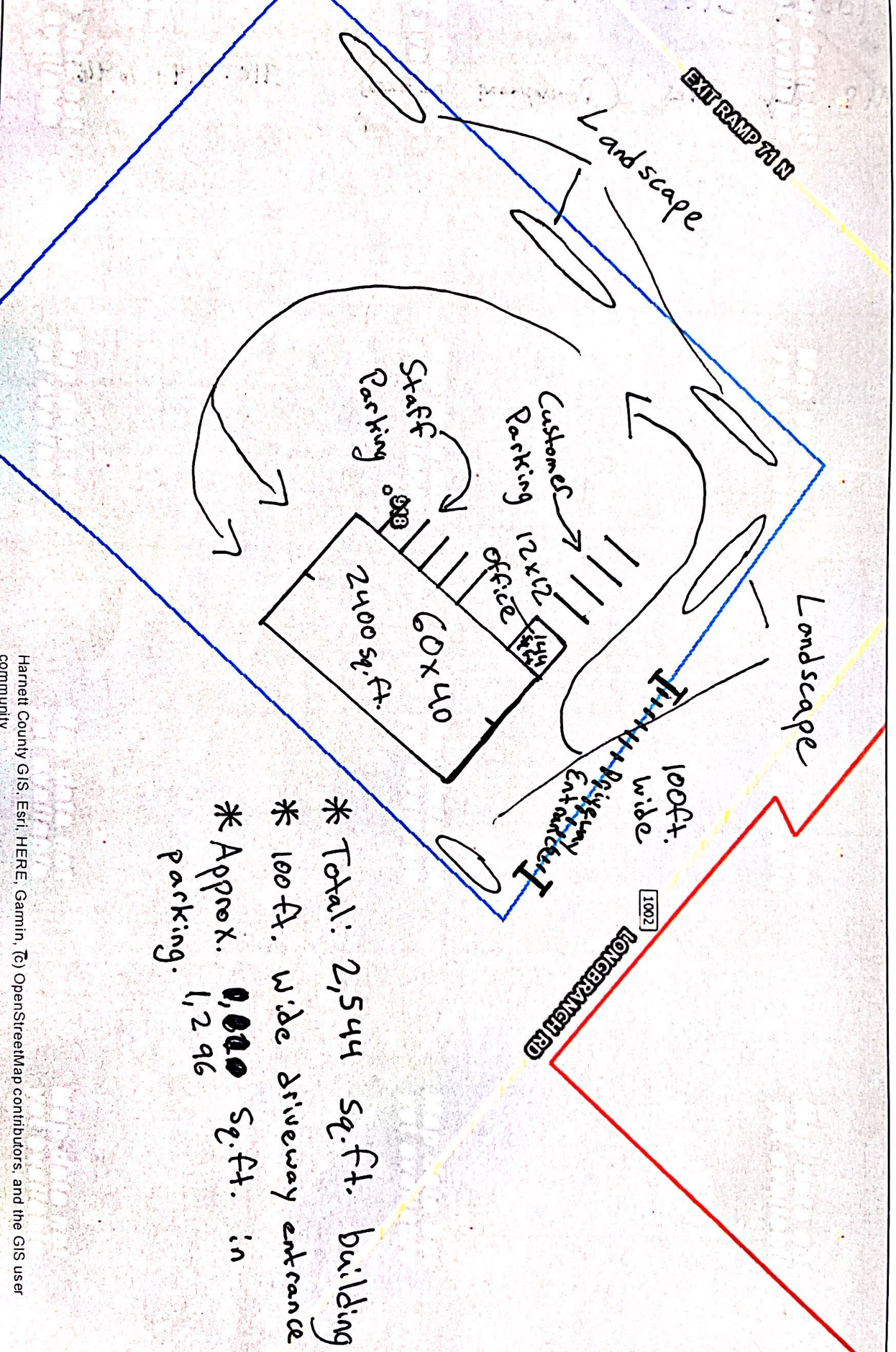
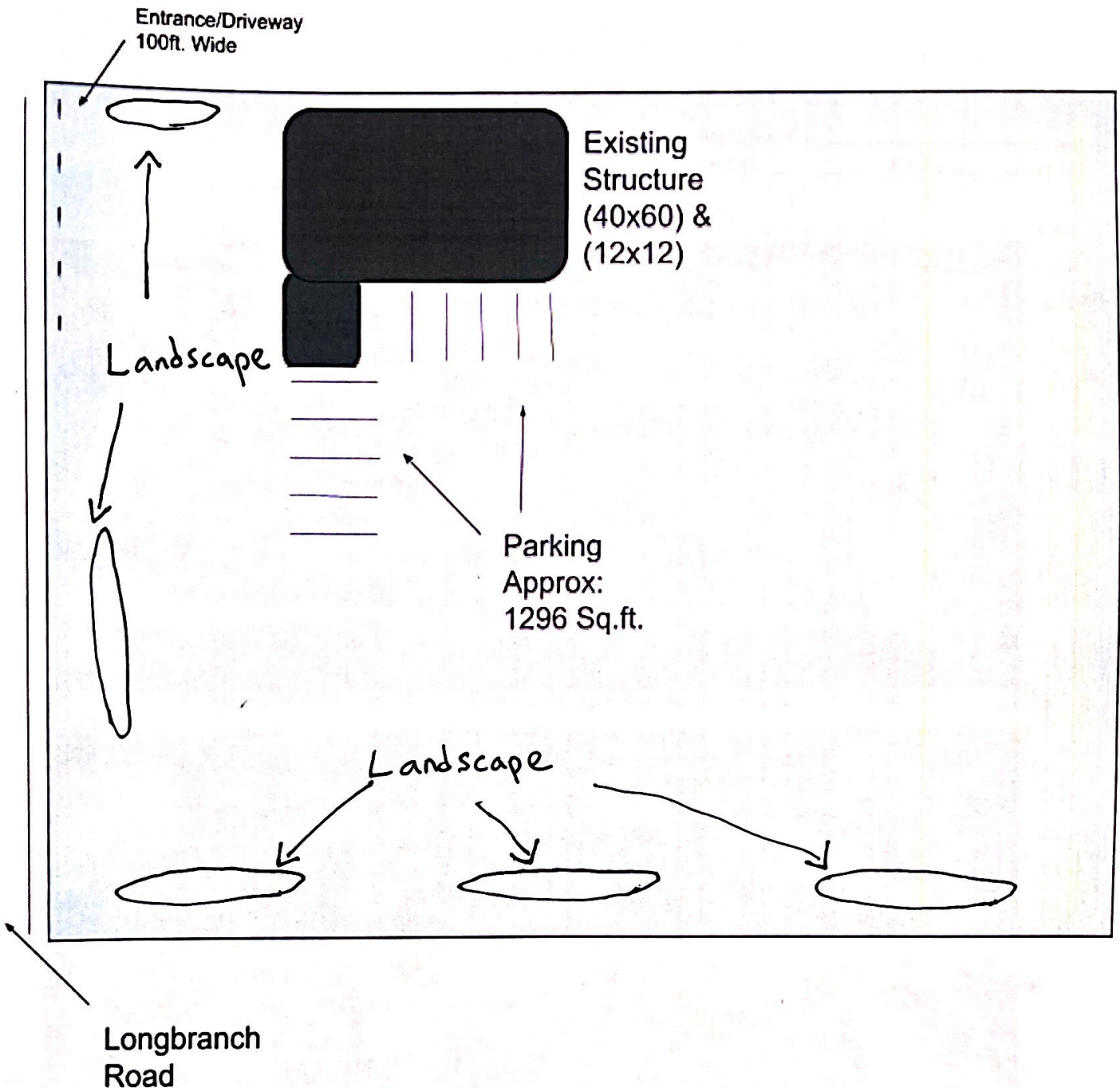


Harnett GIS



- * Total: 2,544 sq. ft. building
- * 100 ft. wide driveway entrance
- * Approx. 0,000 sq. ft. in parking.



Structures in black are existing.
Page#2 Includes Aerial for reference

918 Long Branch Rd. Dunn, NC
New Owner will be: Lakhvir Singh
2.82 Acres

Commercial Zoning: Always used as a truck repair and tire facility since initial build.

New Business Hours: Usually M-F 8-6 Saturday 8-1

Employees: 2-3

Parking: Approx 8 parking spaces