

- PROJECT NOTES**
- THESE PLANS ARE FOR LAYOUT PURPOSES ONLY AND ARE NOT INTENDED FOR CONSTRUCTION. PRICE-DAVIS, INC. (PDI) WILL NOT BE HELD LIABLE FOR CONSTRUCTION ERRORS, CONSTRUCTION REVISIONS OR MODIFICATIONS THAT MAY PROHIBIT EQUIPMENT TO BE INSTALLED AS SHOWN.
 - PDI IS NOT RESPONSIBLE FOR PLAN SUBMITTAL TO ANY STATE OR LOCAL AGENCY FOR APPROVALS.
 - PDI WILL DELIVER, UNCRATE, ASSEMBLE AND SET IN PLACE ALL EQUIPMENT PROVIDED BY PDI WITH THE EXCEPTION AS NOTED IN #5. EQUIPMENT SUPPLIED BY OTHERS IS THE RESPONSIBILITY OF OTHERS.
 - ALL ELECTRICAL ROUGH-INS AND TERMINATIONS ARE TO BE CONDUCTED BY THE PROJECT ELECTRICIAN UNLESS OTHERWISE NOTED. ALL REFRIGERATION THERMOSTAT CONTROL WIRES ARE TO BE RUN BY THE PROJECT ELECTRICIAN.
 - ALL PLUMBING ROUGH-INS AND FINAL CONNECTIONS FOR HOT AND COLD WATER AND DRAINS ARE TO BE CONDUCTED BY THE PROJECT PLUMBER UNLESS OTHERWISE NOTED. ALL PLUMBING FIXTURES TO INCLUDE, BUT NOT LIMITED TO: SINKS, FAUCETS, DRAIN VALVES, DISPOSALS, GREASE TRAPS, DRAIN AND FLOOR TROUGHS, WATER FILTRATION SYSTEMS AND WATER HEATERS ARE TO BE INSTALLED BY THE PROJECT PLUMBER IN ACCORDANCE TO THE MANUFACTURERS INSTALLATION SPECIFICATIONS.
 - ALL GAS ROUGH-INS AND FINAL CONNECTIONS ARE TO BE CONDUCTED BY THE PROJECT PLUMBER. ALL GAS COMPONENTS SUCH AS, BUT NOT LIMITED TO: REGULATORS, GAS VALVES, ETC. ARE TO BE PROVIDED BY THE PROJECT PLUMBER.
 - PDI REFRIGERATION INSTALLERS OR SUB-CONTRACTORS ARE TO PROVIDE ALL MATERIALS AND LABOR NECESSARY FOR SETTING ALL SUPPLIED REFRIGERATION CONDENSING UNITS IN THEIR DESIGNATED LOCATIONS, HANGING ALL SUPPLIED EVAPORATOR COILS, PROVIDING ALL LIQUID AND SUCTION LINE-SETS AND PROVIDE CONDENSATE DRAIN LINES.
 - PDI TO PROVIDE MECHANICAL PERMITS FOR THE REFRIGERATION INSTALLATION AS PER LOCAL CODE. PERMITS ARE NOT INCLUDED IN THE PROJECT BID AND WILL BE INVOICED SEPARATELY AS REQUIRED.
 - PDI TO START-UP ALL SUPPLIED REFRIGERATION SYSTEMS.
 - GC TO PROVIDE ADEQUATE SUBSTRATE IN THE WALLS FOR WALL MOUNTED EQUIPMENT INCLUDING, BUT NOT LIMITED TO OVERSHELVES, POT RACKS, ETC.

Confidentiality Statement
The information contained in this document is confidential and intended for the use of the client only. It is not to be distributed, copied, or otherwise used for any purpose other than that intended without the prior written consent of Price-Davis, Inc. (PDI).
Legal
Price-Davis, LLC makes no representation or warranty, express or implied, regarding the accuracy, reliability, or completeness of the information contained in this document. The user agrees to hold Price-Davis, LLC harmless from any and all claims, damages, or losses, including reasonable attorneys' fees, arising out of or in connection with the use of this information. Price-Davis, Inc. assumes no liability for any data or information received as a result of any user's reliance on this data.

PROPOSED FLOOR PLAN
SPRINGS OF BALLENTINE
40 RAWLS CLUB RD.
FUQUAY VARINA, NC 27526

REVISIONS	
NO.	DATE / DESC.
1	7.05.2022
2	9.01.2022
3	3.01.2023 Equip No.
4	3.21.2023 Final

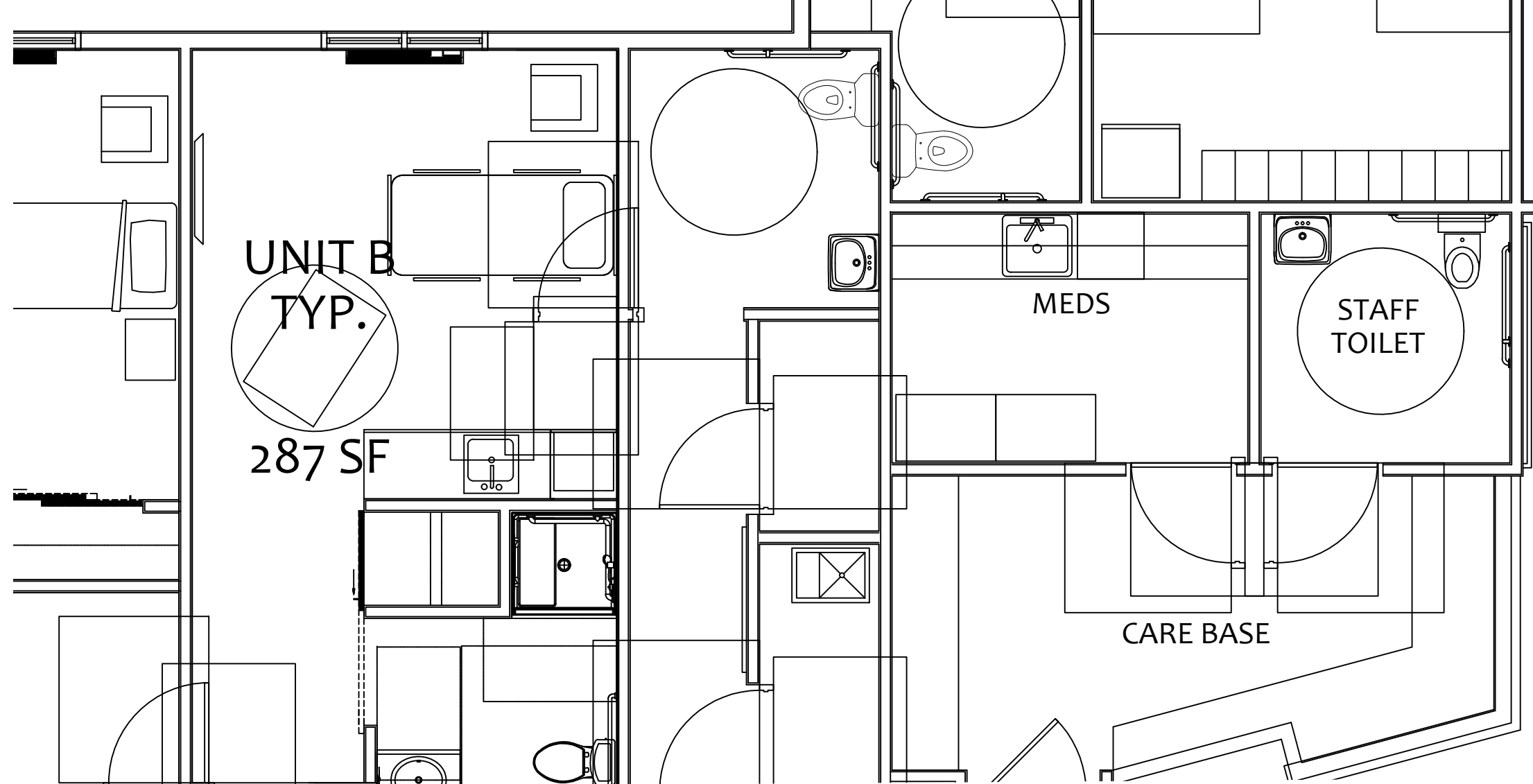
DRAWN BY	JR
DATE	3.22.23
PROJECT MANAGER	ZM
PROJECT NUMBER	450411
SHEET NUMBER	

ELECTRICAL CONNECTION LEGEND

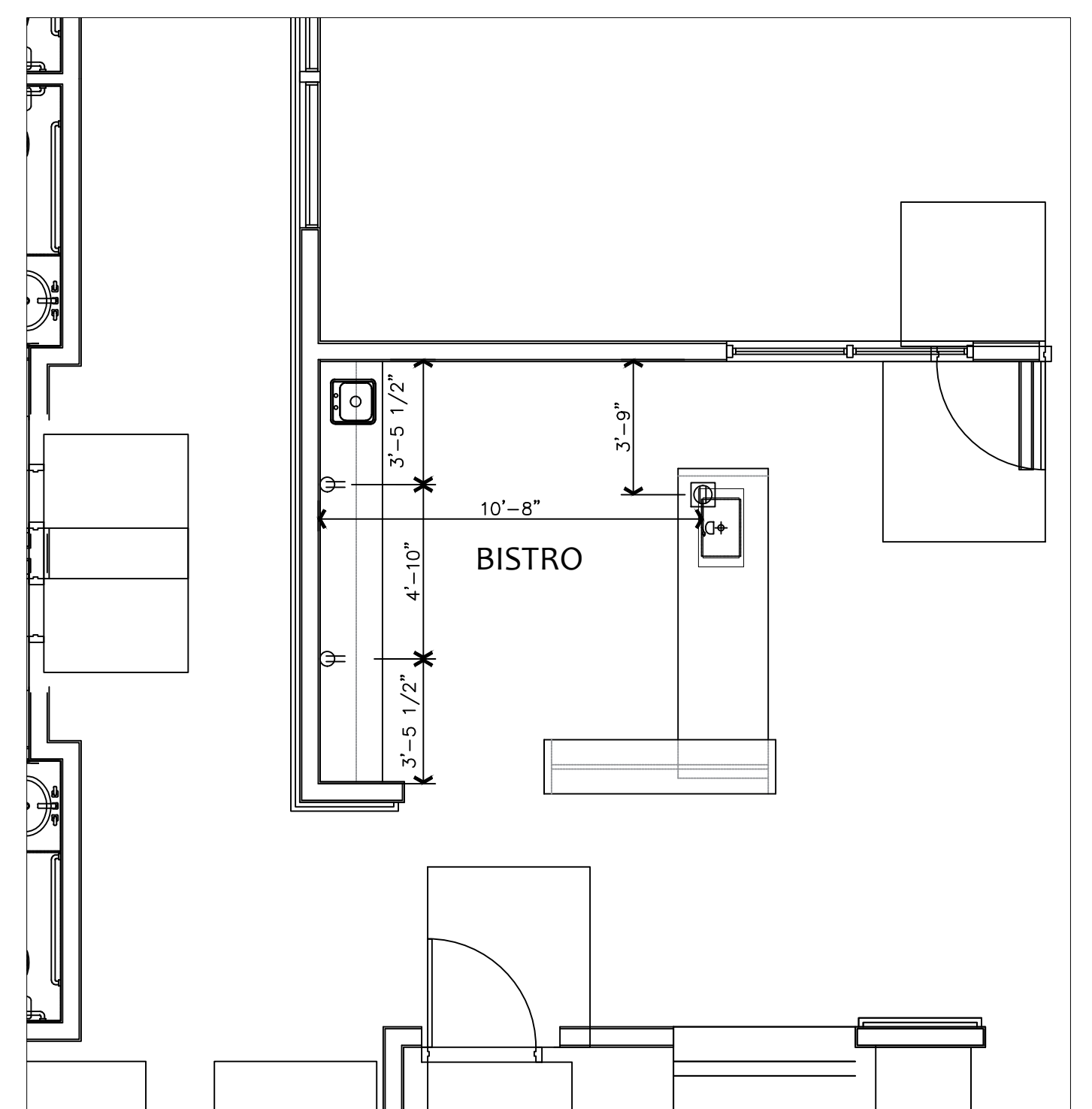
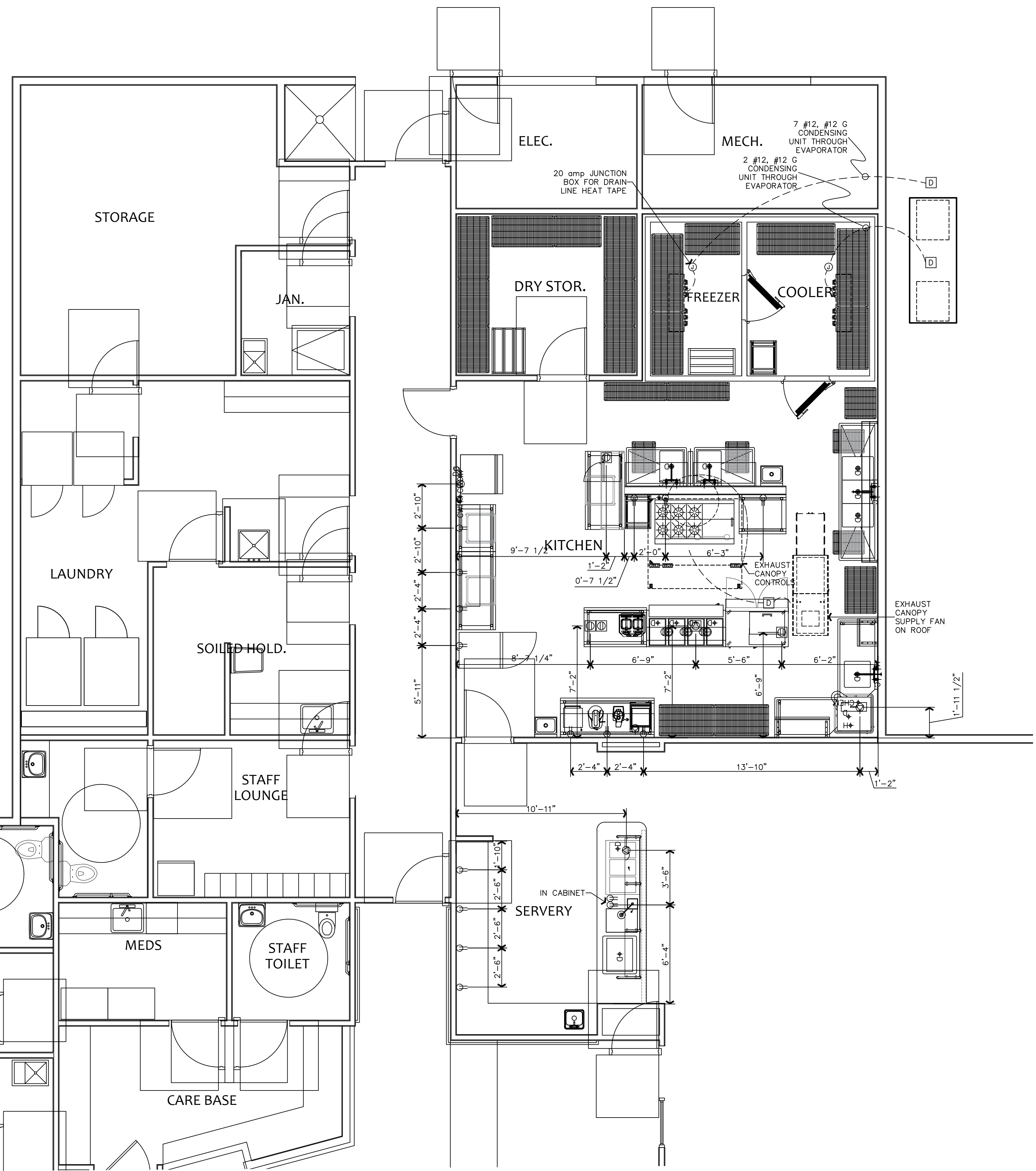
- ⊕ DUPLEX RECEPTACLE OUTLET
- ⊕ SPECIAL PURPOSE OUTLET - 120V
- ⊕ SPECIAL PURPOSE OUTLET - 208V
- ⊕ FLOOR OUTLET
- ⊕ FLOOR SPECIAL PURPOSE OUTLET - 208V
- ⊕ FLOOR DUPLEX RECEPTACLE OUTLET
- D DISCONNECT
- J JUNCTION BOX

ELECTRICAL ROUGH-IN NOTES

- ROUGH-INS SHOWN ARE FOR FOODSERVICE EQUIPMENT SUPPLIED BY PRICE-DAVIS, INC.
- EQUIPMENT PROVIDED BY OWNER, OR OTHERS ARE THE RESPONSIBILITY OF OTHERS
- FOR ROOF TOP EQUIPMENT, OR EQUIPMENT LOCATED OUTSIDE THE PERIMETER OF THE BUILDING, VERIFY LOCATION WITH THE PROJECT ARCHITECT OR GENERAL CONTRACTOR PRIOR TO WIRING, INSTALLING DISCONNECTS, ETC.
- REFER TO THE EXHAUST CANOPY SUBMITTAL DRAWINGS FOR WIRING INSTRUCTIONS FOR THE EXHAUST CANOPY, EXHAUST FAN AND SUPPLY FANS.
- ALL ELECTRICAL STUB-OUTS LOCATED IN THE MIDDLE OF THE FLOOR ARE TO NOT EXCEED 6" A.F.F. FOR CLEARANCE UNDER THE EQUIPMENT
- ALL FLOOR ELECTRICAL BOXES ARE TO NOT EXCEED 6" HIGH AFTER FINISHED FLOOR FOR CLEARANCE UNDER EQUIPMENT.
- ELECTRICAL CONTRACTOR TO PROVIDE ALL FINAL EQUIPMENT TERMINATIONS
- ELECTRICAL CONTRACTOR TO RUN ALL REFRIGERATION SYSTEM THERMOSTAT AND CONTROL WIRES FROM THE THERMOSTAT TO THE CONDENSING UNIT LOCATIONS.



ELECTRICAL ROUGH-IN
SCALE: 1/4"=1'-0"



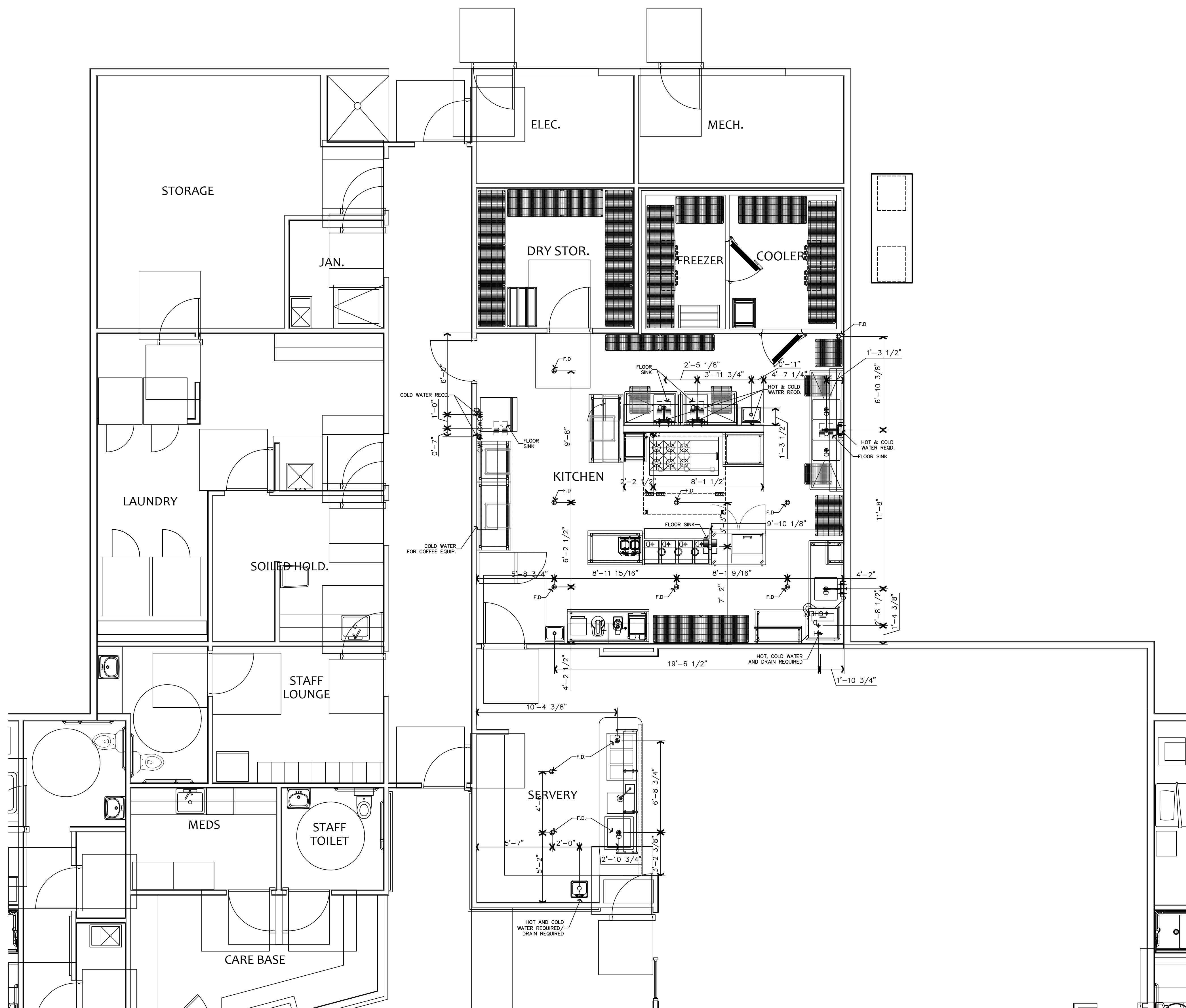
BISTRO AREA
SCALE: 1/4"=1'-0"

Confidentiality Statement
The information contained in this document is strictly confidential and intended for the use of the client and its authorized personnel only. It is not to be distributed, copied, or otherwise used in any way without the prior written consent of Price-Davis, LLC.
Legal
Price-Davis, LLC makes no representation or warranty, express or implied, regarding the accuracy, reliability, or completeness of the information contained in this document. The user of this document is responsible for verifying the accuracy of the information and for taking appropriate precautions to protect its confidential information. Price-Davis, LLC assumes no liability for any damages, including consequential damages, resulting from the use of this document.

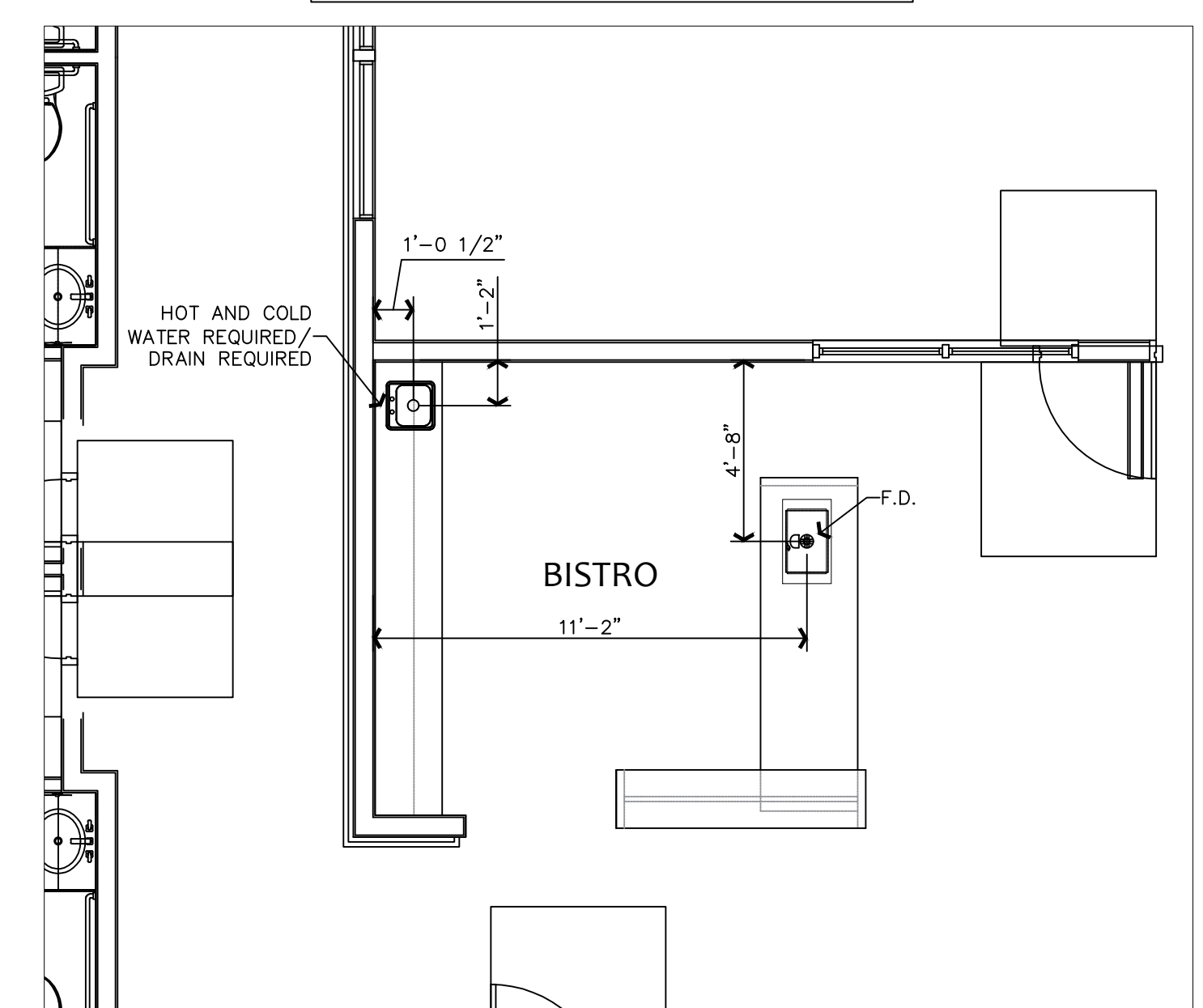
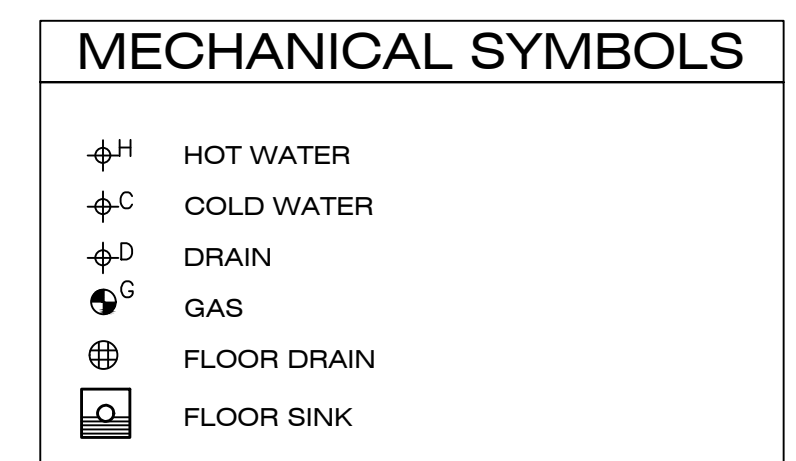
PROPOSED FLOOR PLAN
SPRINGS OF BALLENTINE
40 RAWLS CLUB RD.
FUQUAY VARINA, NC 27526

REVISIONS	
NO.	DATE / DESC.
1	7.05.2022
2	9.01.2022
3	3.01.2023 Equip No.
4	3.21.2023 Final

DRAWN BY
LB
DATE
3.22.23
PROJECT MANAGER
ZM
PROJECT NUMBER
450411
SHEET NUMBER



PLUMBING ROUGH-IN
SCALE: 1/4"=1'-0"



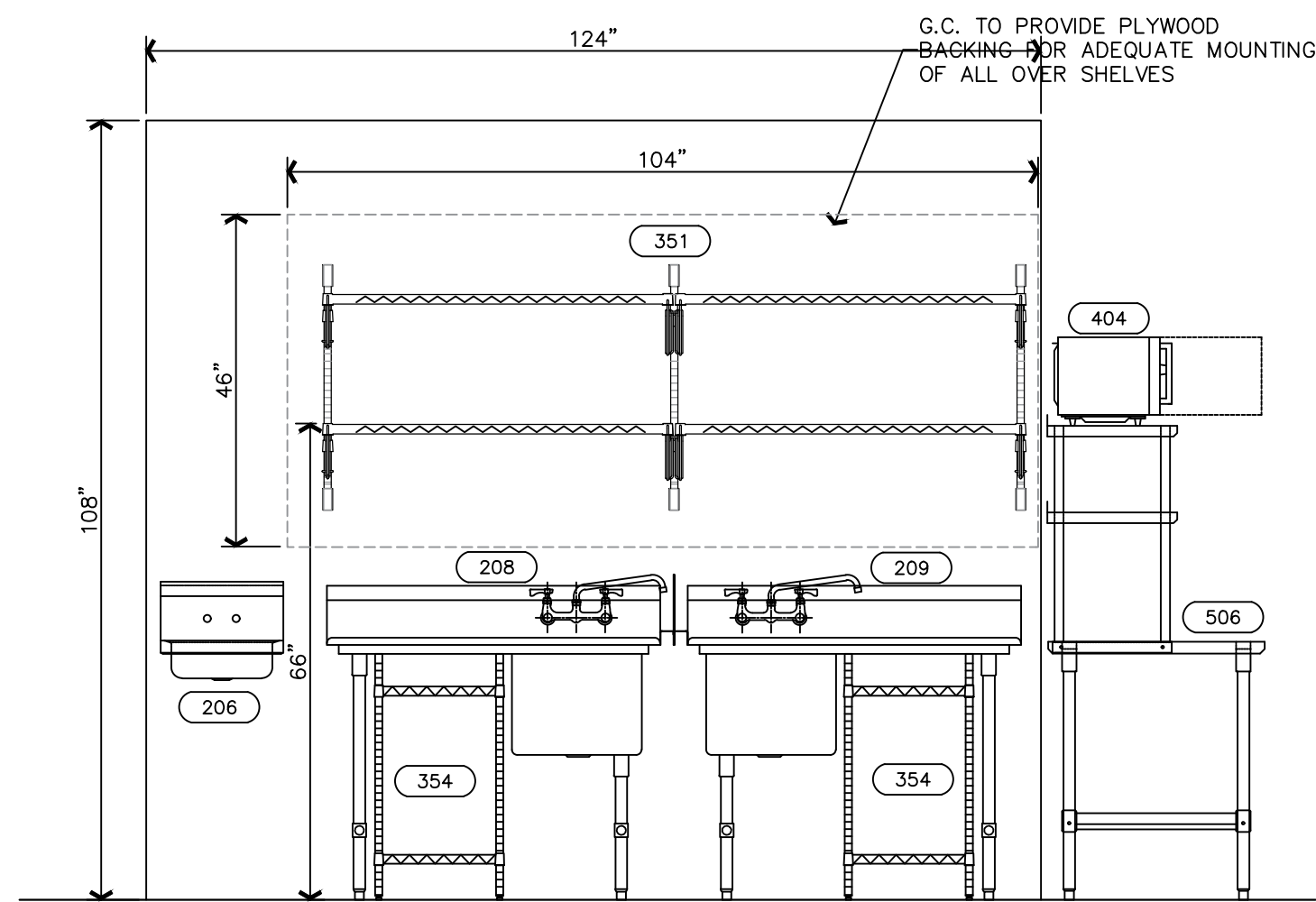
BISTRO AREA
SCALE: 1/4"=1'-0"

Confidentiality Statement: This document and its contents are the property of Price Davis, LLC. It is intended for the use of the client and is not to be distributed, copied, or otherwise used without the written permission of Price Davis, LLC. Price Davis, LLC makes no representation or warranty, express or implied, regarding the accuracy, reliability, or completeness of the information contained herein. The user agrees to hold Price Davis, LLC harmless from any and all claims, damages, or losses, including reasonable attorneys' fees, that may be incurred as a result of any user's reliance on this data.

PROPOSED FLOOR PLAN
SPRINGS OF BALLENTINE
40 RAWLS CLUB RD.
FUQUAY VARINA, NC 27526

REVISIONS	
NO.	DATE / DESC.
1	7.05.2022
2	9.01.2022
3	3.01.2023 Equip No.
4	3.21.2023 Final

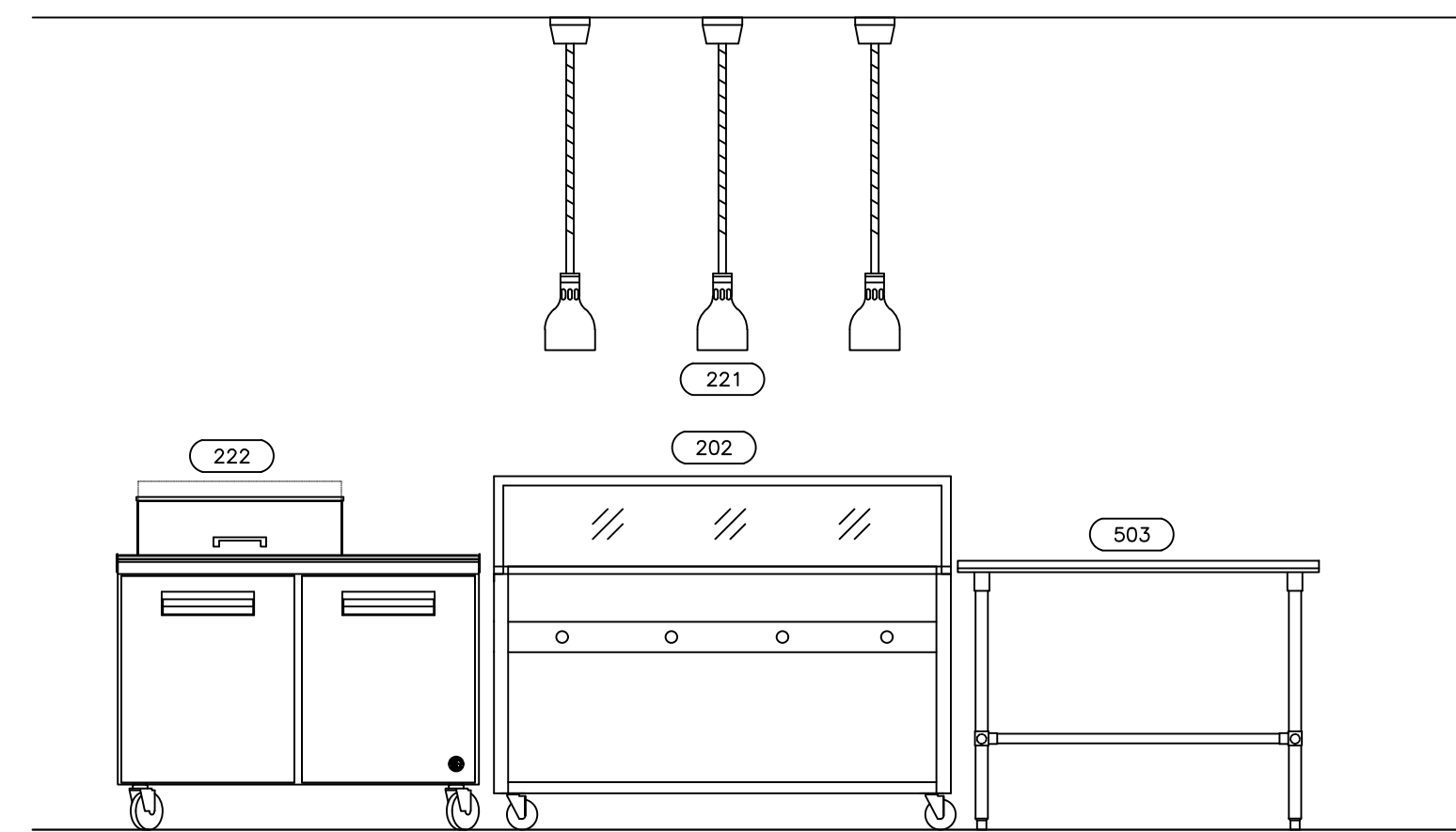
DRAWN BY
LB
DATE
3.22.23
PROJECT MANAGER
ZM
PROJECT NUMBER
450411
SHEET NUMBER



PREP SINKS

SCALE: 3/8" = 1'-0"

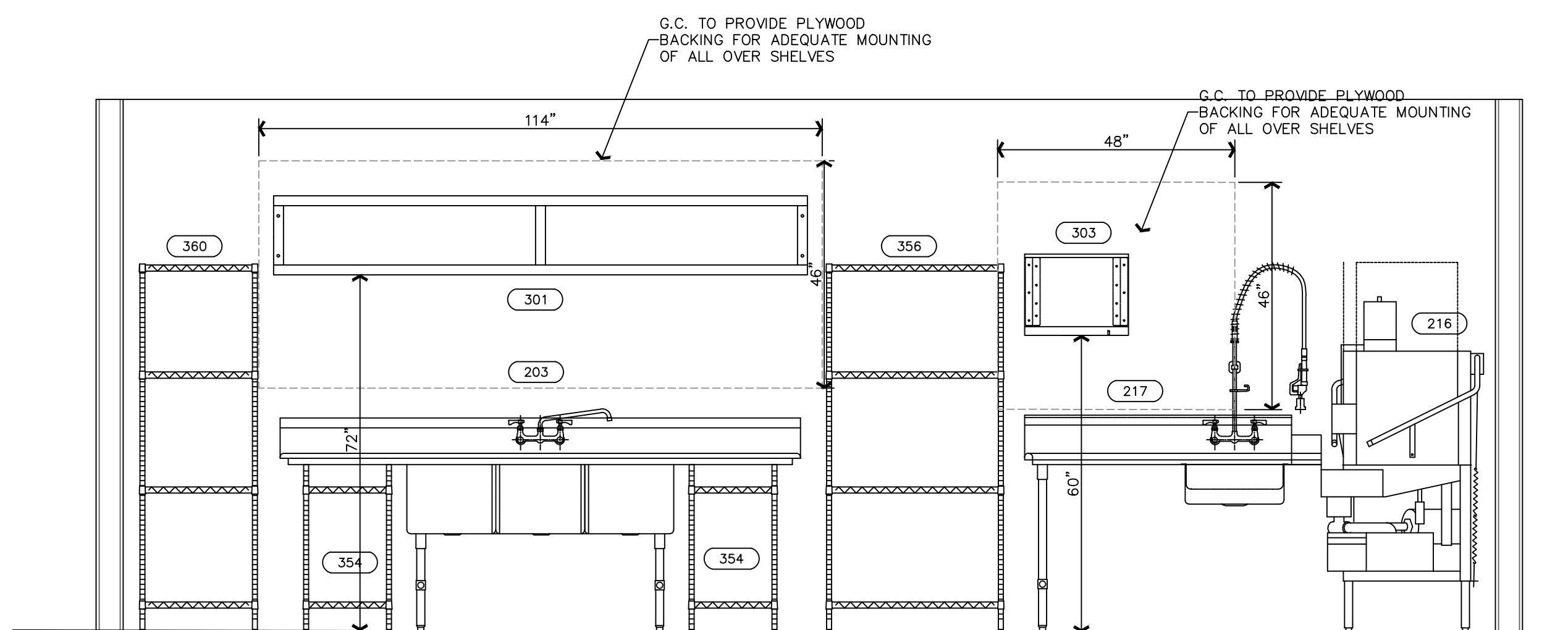
1
EQ5



FOOD PREP ISLAND

SCALE: 3/8" = 1'-0"

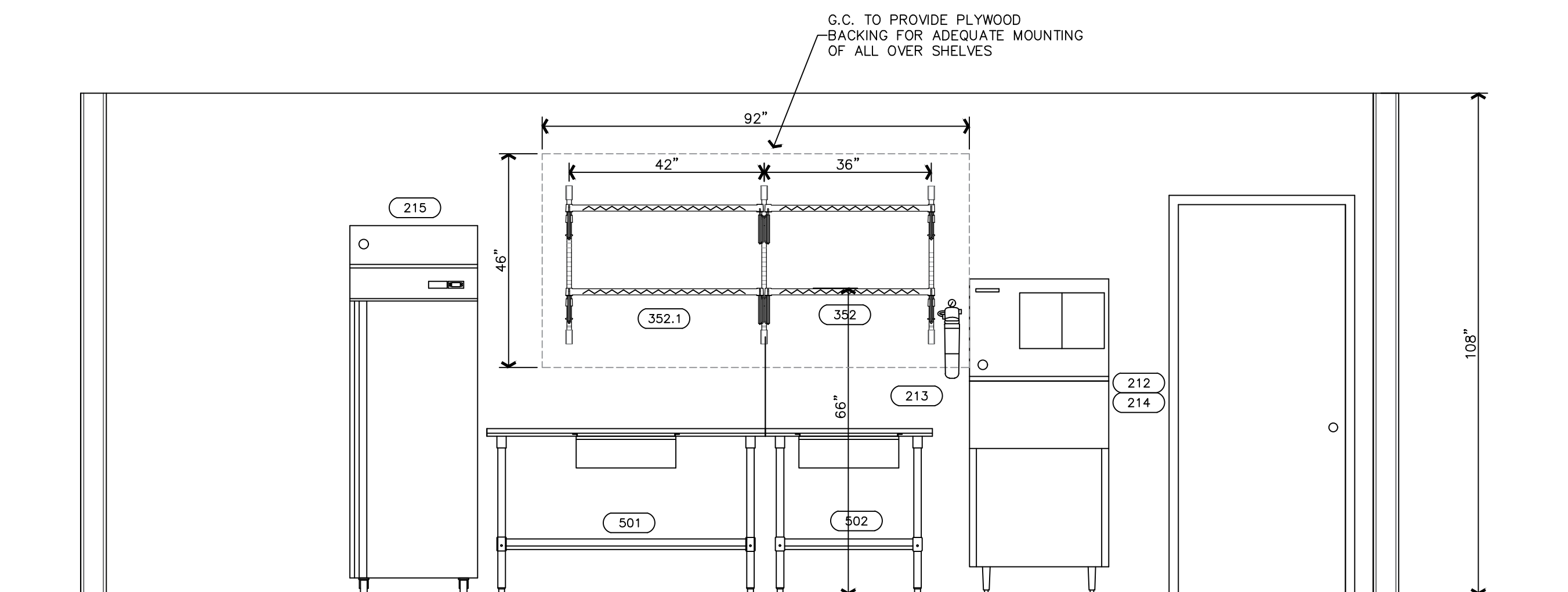
2
EQ5



DISHWASHER STATION

SCALE: 3/8" = 1'-0"

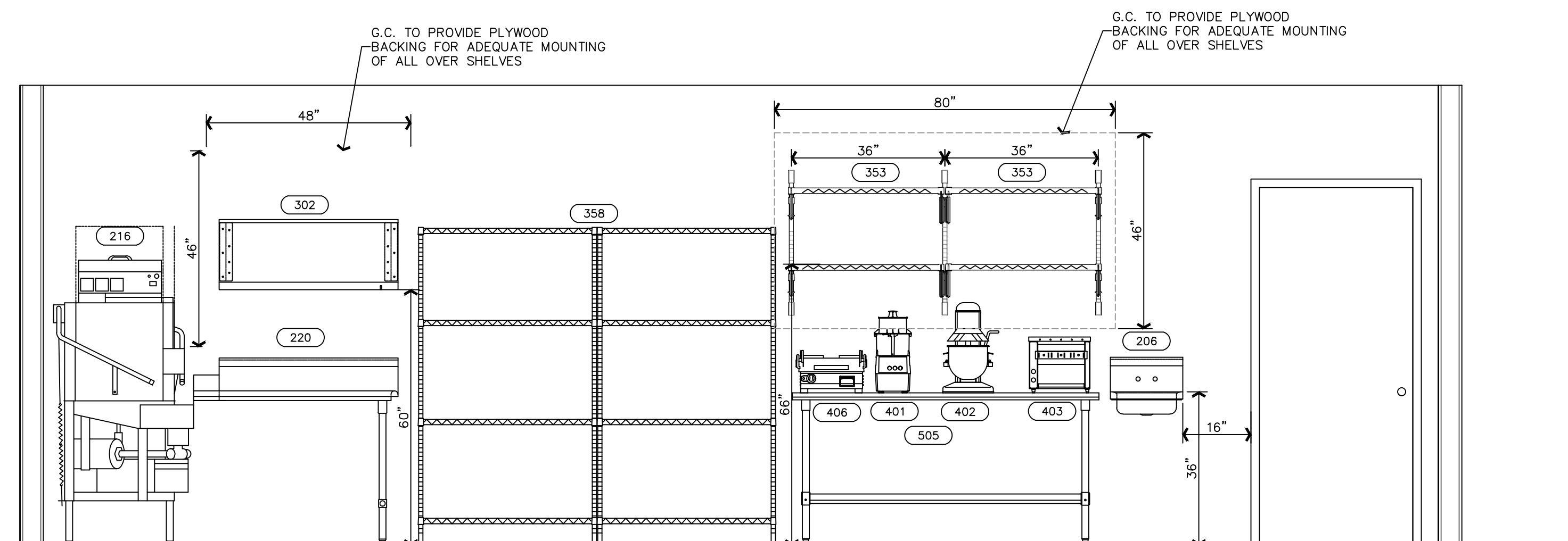
3
EQ5



PREP STATION

SCALE: 3/8" = 1'-0"

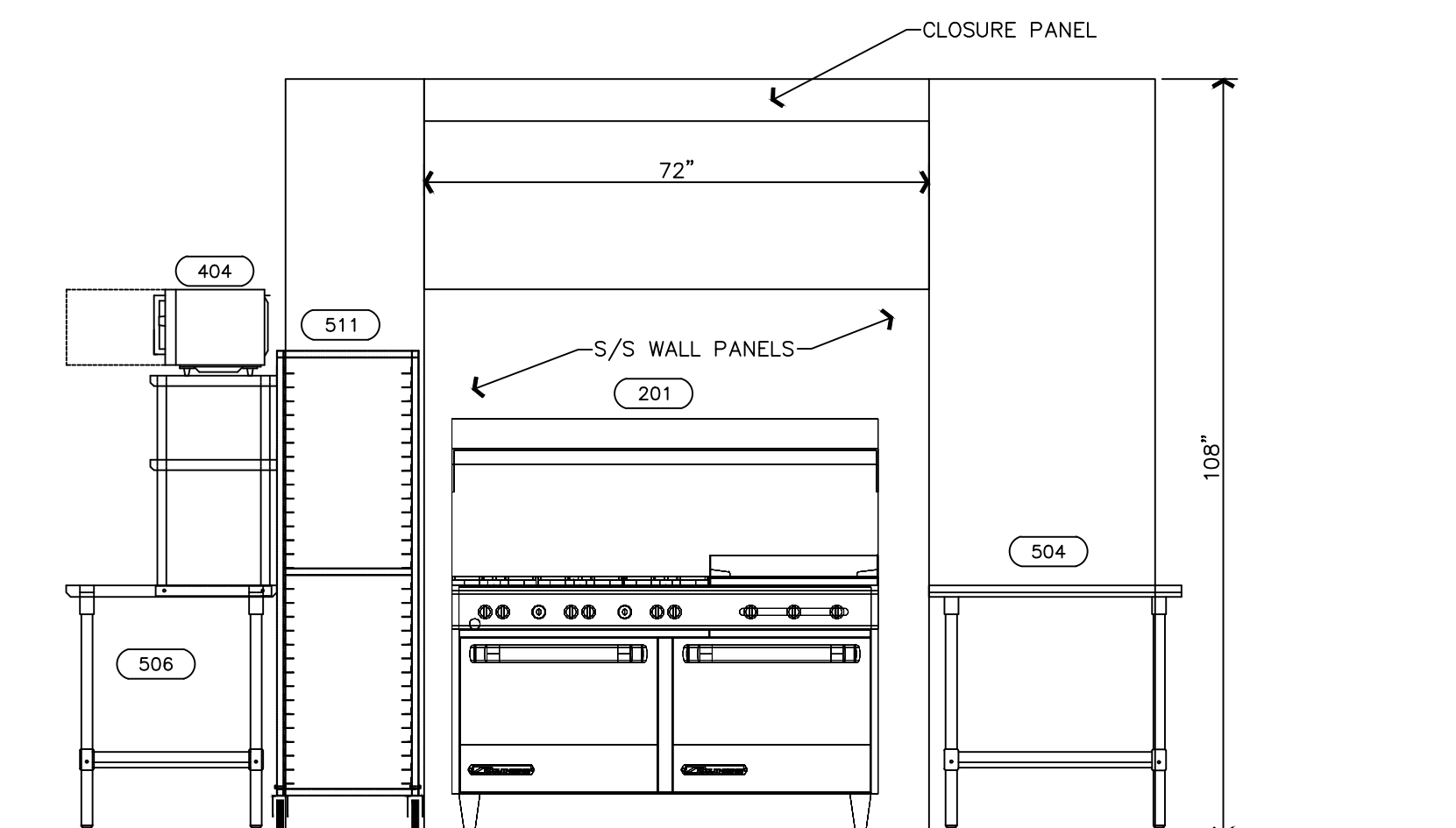
4
EQ5



PREP TABLE

SCALE: 3/8" = 1'-0"

5
EQ5



COOKING STATION

SCALE: 3/8" = 1'-0"

6
EQ5

PROPOSED FLOOR PLAN

SPRINGS OF BALLENTINE

40 RAWLS CLUB RD.
FUQUAY VARINA, NC 27526

REVISIONS	
NO.	DATE / DESC.
1	7.05.2022
2	9.01.2022
3	3.01.2023 Equip No.
4	3.21.2023 Final

DRAWN BY	JR
DATE	3.22.23
PROJECT MANAGER	ZM
PROJECT NUMBER	450411
SHEET NUMBER	

FS5
KITCHEN
ELEVATIONS

PRICE **DAVIS**
EQUIPMENT SOLUTIONS FOR THE FOODSERVICE AND
CONVENIENCE STORE INDUSTRIES
P 800-456-1014 • F 704-732-2655
www.pricedavisllc.com

Confidentiality Statement
The information contained in this document is strictly confidential and intended for the use of the client only. It is not to be distributed, copied, or otherwise used by any other party without the written consent of Price Davis, LLC.
Price Davis, LLC makes no representation or warranty, express or implied, regarding the accuracy, reliability, or completeness of the information contained in this document. The user of this information is solely responsible for its use. Price Davis, LLC assumes no liability for any errors or omissions in this document, or for any consequences that may result from its use.