

SUBMITTAL COVER FORM

Project Name: Senters Senior Living 40 Rawls Club Drive Fuquay Varina, NC27526

Date of Submittal: **11/10/2023**

Contractor: Carolina Commercial Contractors

Subcontractor: Odyssey Mechanical

Supplier: _____

Manufacturer: N/A

| SPECIFICATION SECTION | DESCRIPTION OF ITEM SUBMITTED |
|-----------------------|----------------------------------|
| N/A | Kitchen Hood Product Information |

We warrant the following:

- A. We have personally investigated the proposed product and determined that it is equal in all respects to that specified and/or performance specification requirements.
- B. We will provide the specified guarantee for this product.
- C. We will coordinate installation of this product of work, making such changes as may be required for the work to be complete in all aspects.
- D. We have clearly indicated by marking as "Non-Complying Feature" each and every requirement of the specifications that this product does not meet.
- E. And, we waive all claims for additional costs related to this product which subsequently became apparent.

Submitted By: Chase Dodson / Project Manager / Carolina Commercial Contractors, LLC

Carolina Commercial Contractor's Review

Architect-Engineer's Review Stamp

Project Name: **Senters**

REVIEWED AS NOTED RESUBMIT
 REVISE NOT REVIEWED

BY: *Chase Dodson* DATE: 1/22/2024

Submittal: Kitchen Hood SPEC: N/A

This review is only for general conformance of the project and general compliance. Corrections or comments made on these drawings during this review do not relieve Contractor/Subcontractor from compliance with the requirements of the plans and specifications. Contractor is responsible for all dimensions and fabrication to be confirmed and correlated at the job site

SUBMITTAL REVIEW

APPROVED APPROVED AS NOTED
 RESUBMIT DISAPPROVED

APPROVAL OF SUBMITTALS BY THE ENGINEER SHALL NOT BE CONSTRUED AS RELIEVING THE CONTRACTOR FROM RESPONSIBILITY FOR COMPLIANCE WITH TERMS OR DESIGNS OF THE CONTRACT DOCUMENTS, NOR FROM RESPONSIBILITY FOR ERRORS OF ANY SORT IN THE SUBMITTALS, UNLESS SUCH LACK OF COMPLIANCE OR ERRORS FIRST HAVE BEEN CALLED IN WRITING TO THE ATTENTION OF THE ENGINEER BY THE CONTRACTOR.

REVIEWED BY: *Willie H. [Signature]* DATE: 1/25/24

FOR QUESTIONS, CALL THE
Wilmington, NC Mechanical
REGION 154
PHONE:
EMAIL: reg154@econair.com

PATENT NUMBERS

AC-PSP (UNITED STATES) - US PATENT 7963830 B2.
AC-PSP WALL (CANADA) - CA PATENT 2820509.
AC-PSP ISLAND (CANADA) - CA PATENT 2520330.

HOOD INFORMATION - JOB#5705900

| HOOD NO | TAG | MODEL | MANUFACTURER | LENGTH | MAX COOKING TEMP | TYPE | APPLIANCE DUTY | DESIGN CFM/FT | TOTAL EXH CFM | EXHAUST PLENUM RISER(S) | | | | | | TOTAL SUPPLY CFM | HOOD CONSTRUCTION | HOOD CONFIG | | |
|---------|-----|-----------------|--------------|--------|------------------|------|----------------|---------------|---------------|-------------------------|------|--------|-----|------|------|------------------|-------------------|----------------------|------------|-------|
| | | | | | | | | | | WIDTH | LENG | HEIGHT | DIA | CFM | VEL | | | SP | END TO END | ROW |
| 1 | | 5424 EX-2-PSP-F | ECON-AIR | 6' 0" | 600 DEG | I | HEAVY | 225 | 1350 | | | 4' | 14' | 1350 | 1263 | -0.640' | 1100 | 430 SS WHERE EXPOSED | ALONE | ALONE |

HOOD INFORMATION

| HOOD NO | TAG | FILTER(S) | | | | | LIGHT(S) | | | | UTILITY CABINET(S) | | | | FIRE SYSTEM | HOOD HANGING WEIGHT | |
|---------|-----|-----------------------|-----|--------|--------|------------------------|----------|----------------|------------|----------|--------------------|---------|---------|--------------------|------------------|---------------------|------------|
| | | TYPE | QTY | HEIGHT | LENGTH | EFFICIENCY @ 7 MICRONS | QTY | TYPE | WIRE GUARD | LOCATION | SIZE | TYPE | SIZE | ELECTRICAL MODEL # | | | QUANTITIES |
| 1 | | CAPTRATE SOLID FILTER | 4 | 16" | 16" | 85% SEE FILTER SPEC | 4 | RECESSED ROUND | NO | RIGHT | 12"x54"x24" | TANK FS | 4.0/4.0 | SC-311110MA | 1 LIGHT 1 FAN | YES | 737 LBS |

HOOD OPTIONS

| HOOD NO | TAG | OPTION |
|---------|-----|---|
| 1 | | FIELD WRAPPER 18.00' HIGH FRONT, LEFT, RIGHT. BACKSPLASH 80.00' HIGH X 84.00' LONG 430 SS VERTICAL. RIGHT QUARTER END PANEL 23' TOP WIDTH, 0' BOTTOM WIDTH, 23' HIGH 430 SS. LEFT QUARTER END PANEL 23' TOP WIDTH, 0' BOTTOM WIDTH, 23' HIGH 430 SS. INSULATION FOR BACK OF HOOD. |

PERFORATED SUPPLY PLENUM(S)

| HOOD NO | TAG | POS | LENGTH | WIDTH | HEIGHT | TYPE | RISER(S) | | | | |
|---------|-----|-------|--------|-------|--------|------|----------|------|-----|-----|--------|
| | | | | | | | WIDTH | LENG | DIA | CFM | SP |
| 1 | | Front | 84' | 14' | 6' | MUA | 10" | 28" | | 550 | 0.141' |
| | | | | | | MUA | 10" | 28" | | 550 | 0.141' |

GREASE DUCT & CHIMNEY SPECIFICATIONS:
PROVIDE GREASE DUCT EQUAL TO ECON-AIR MODEL "EDW" ROUND 20 GAUGE 430 STAINLESS STEEL DUCTWORK. MODEL "EDW" IS LISTED TO UL-1978 AND IS INSTALLED USING "V" CLAMP LOCKING CONNECTIONS SEALED WITH 3M FIRE BARRIER 2000 PLUS. MODEL "EDW" DOES NOT REQUIRE WELDING PROVIDING IT HAS BEEN INSTALLED PER THE MANUFACTURERS INSTALLATION GUIDE.
PROVIDE RATED ACCESS DOORS AT EVERY CHANGE IN DIRECTION AND EVERY 12' ON CENTER. PER MANUFACTURERS LISTING MODEL "EDW" HORIZONTAL RUNS LESS THAN 75 FT. CAN BE SLOPED 1/16" PER 12", HORIZONTAL RUNS MORE THAN 75 FT. CAN BE SLOPED 3/16" PER 12". DUCT SHOULD BE SLOPED AS MUCH AS POSSIBLE TO REDUCE THE CHANCE OF GREASE ACCUMULATION IN HORIZONTAL RUNS.

IF THE DUCT OR CHIMNEY IS WITHIN 18 INCHES OF COMBUSTIBLE MATERIAL, PROVIDE UL-2221 OR UL-103 HT LISTED DOUBLE WALL GREASE DUCT OR DOUBLE WALL CHIMNEY EQUAL TO ECON-AIR MODEL "EDW- 2R, 2R TYPE HT, 3R, OR 3Z" ROUND 20 GAUGE 430 STAINLESS INNER DUCT INSULATED WITH A 24 GAUGE 430 STAINLESS OUTER SHELL.

ECON-AIR RECOMMENDS THE USE OF LISTED, PRE-FABRICATED ROUND GREASE EXHAUST DUCT TO REDUCE STATIC PRESSURE IN THE SYSTEM, MINIMIZE INSTALLATION AND INSPECTION TIMES, AND ENSURE DUCT IS LIQUID TIGHT

HVAC DISTRIBUTION NOTE
HIGH VELOCITY DIFFUSERS OR HVAC RETURNS SHOULD NOT BE PLACED WITHIN TEN (10) FEET OF THE EXHAUST HOOD. PERFORATED DIFFUSERS ARE RECOMMENDED.

VERIFY CEILING HEIGHT
____' - ____"

HEIGHT REQUIRED TO VERIFY THAT HOOD FITS SPACE AND TO SIZE THE ENCLOSURE PANELS

CUSTOMER APPROVAL TO MANUFACTURE:

APPROVED AS NOTED

APPROVED WITH NO EXCEPTION TAKEN

REVISE AND RESUBMIT

SIGNATURE _____ DATE _____

YOUR TITLE _____

SPECIFICATION: CAPTRATE® GREASE-STOP® SOLID FILTER

THE CAPTRATE GREASE-STOP SOLID FILTER IS A SINGLE-STAGE FILTER FEATURING A UNIQUE S-Baffle DESIGN IN CONJUNCTION WITH A SLOTTED REAR Baffle DESIGN, TO DELIVER EXCEPTIONAL FILTRATION EFFICIENCY.

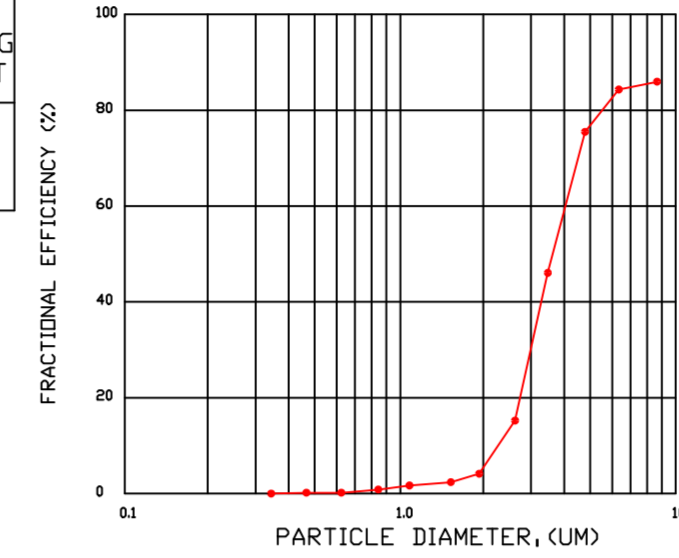
FILTER IS STAINLESS STEEL CONSTRUCTION, AND SIZED TO FIT INTO STANDARD 2-INCH DEEP HOOD CHANNEL(S).

UNITS SHALL INCLUDE STAINLESS STEEL HANDLES AND A FASTENING DEVICE TO SECURE THE TWO COMPONENTS WHEN ASSEMBLED.

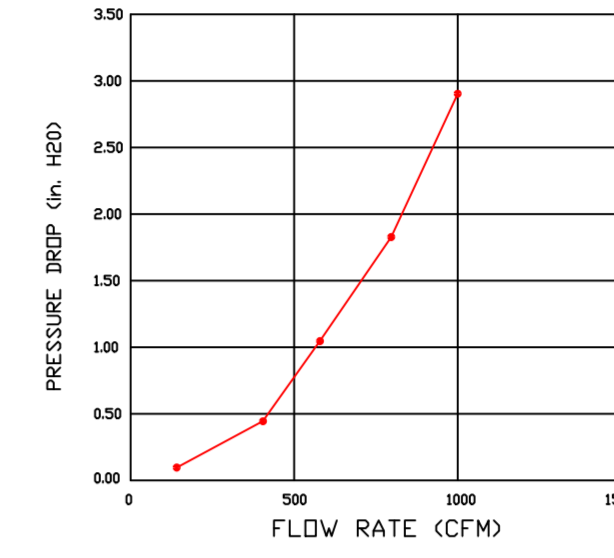
GREASE EXTRACTION EFFICIENCY PERFORMANCE SHALL REMOVE AT LEAST 75% OF GREASE PARTICLES FIVE MICRONS IN SIZE, AND 85% GREASE PARTICLES SEVEN MICRONS IN SIZE AND LARGER, WITH A CORRESPONDING PRESSURE DROP NOT TO EXCEED 1.0 INCHES OF WATER GAUGE.

THE CAPTRATE GREASE-STOP SOLID WAS TESTED TO ASTM STANDARD ASTM F2519-05, MANUFACTURER APPROVED FOR USE IN SOLID FUEL APPLICATIONS AS A SPARK ARRESTER.

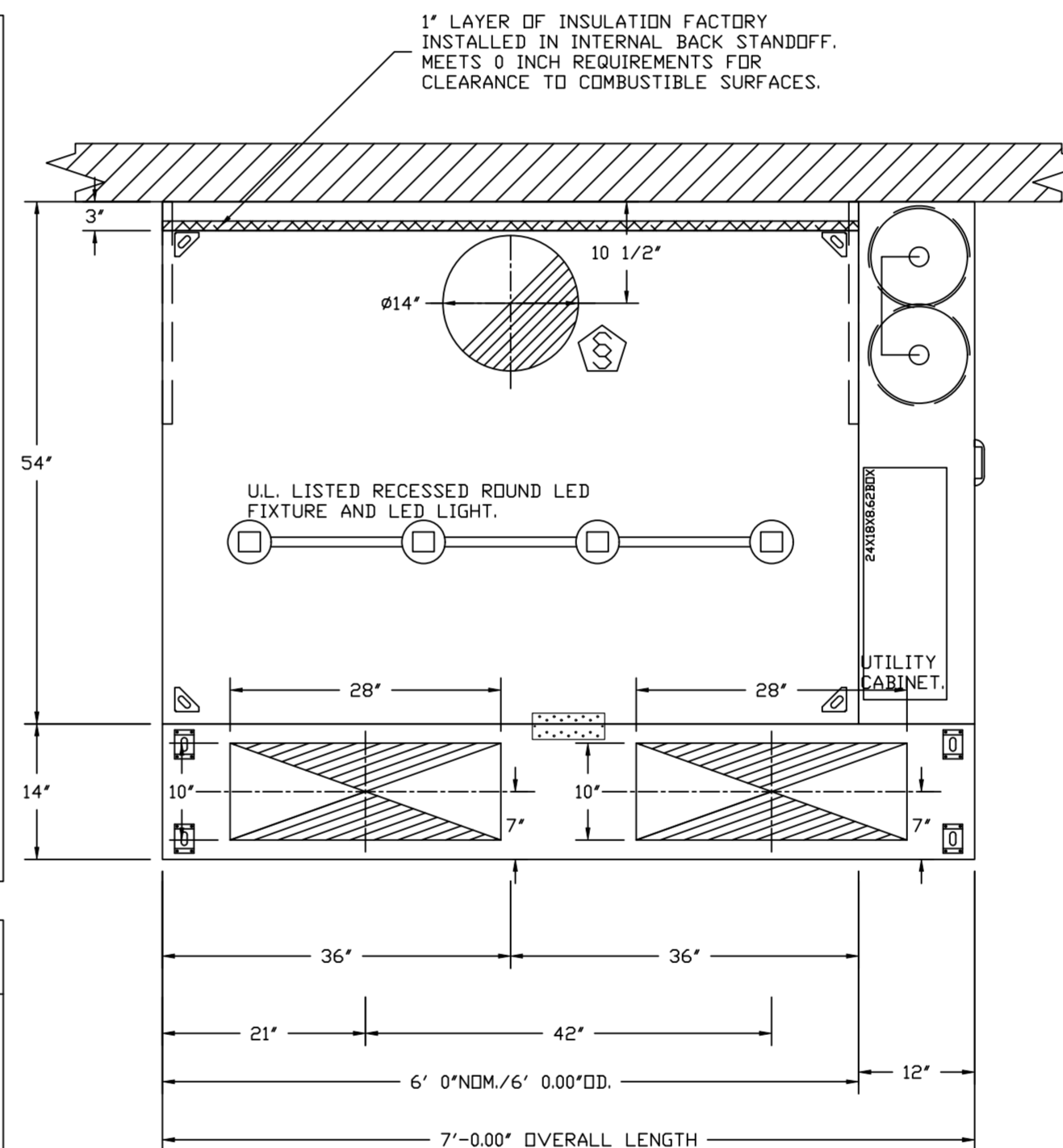
EFFICIENCY VS. PARTICLE DIAMETER



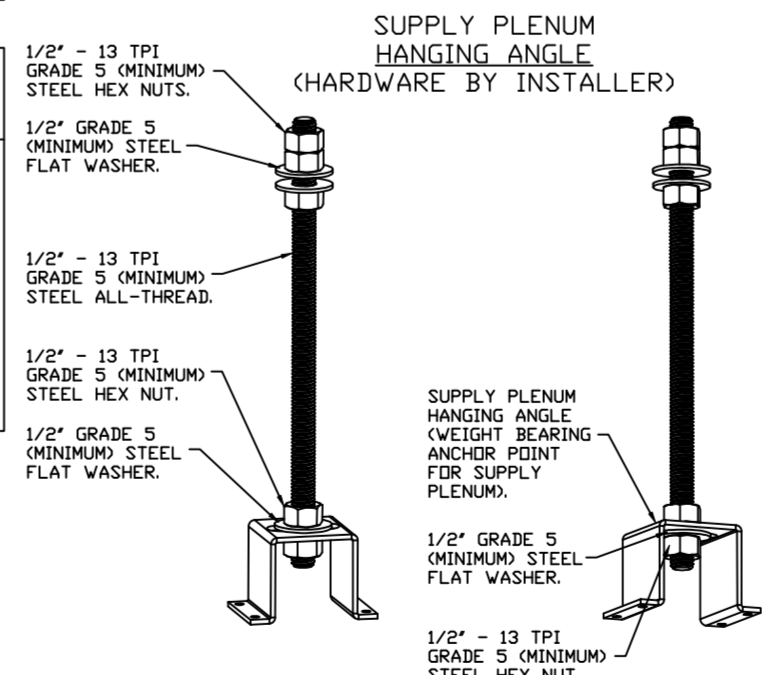
PRESSURE DROP VS. FLOW RATE



CAPTRATE FILTERS ARE BUILT IN COMPLIANCE WITH:
NFPA #96.
NSF STANDARD #2.
UL STANDARD #1046.
INT. MECH. CODE (IMC).
ULC-S649.

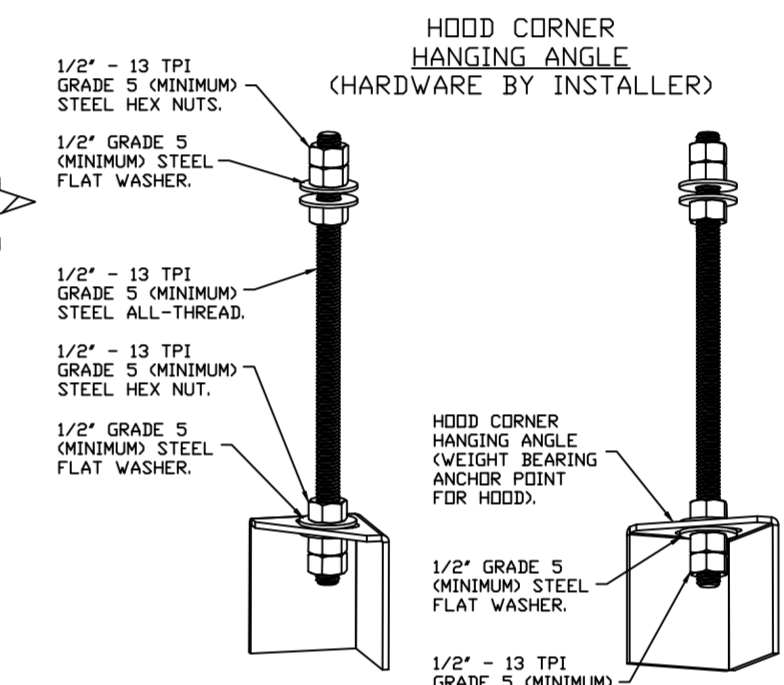


PLAN VIEW - HOOD #1
6' 0.00" LONG 5424EX-2-PSP-F



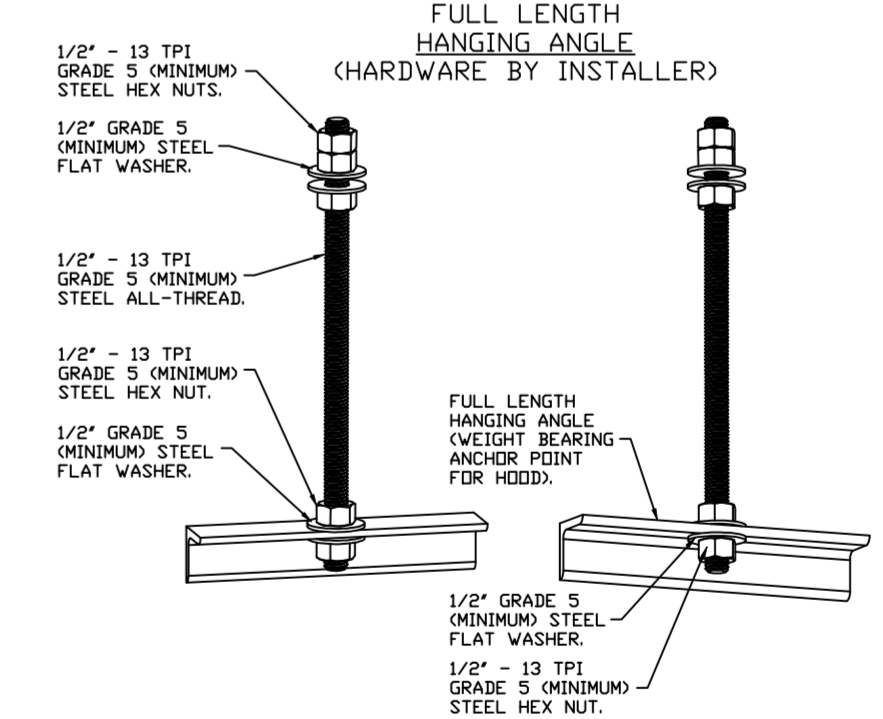
ASSEMBLY INSTRUCTIONS

HANGING ANGLE MUST BE SUPPORTED WITH 1/2" - 13 TPI GRADE 5 (MINIMUM) ALL-THREAD. SANDWICH HANGING ANGLES AND CEILING ANCHOR POINTS WITH 1/2" GRADE 5 (MINIMUM) STEEL FLAT WASHERS AND 1/2" - 13 TPI GRADE 5 (MINIMUM) HEX NUTS AS SHOWN. MUST USE DOUBLED HEX NUT CONFIGURATION ABOVE CEILING ANCHORS. SINGLE HEX NUT BENEATH HANGING ANGLE IS ACCEPTABLE FOR PSP HANGING ANGLES. MAINTAIN 1/4" OF EXPOSED THREADS BENEATH BOTTOM HEX NUT. TORQUE ALL HEX NUTS TO 57 FT-LBS.



ASSEMBLY INSTRUCTIONS

HANGING ANGLE MUST BE SUPPORTED WITH 1/2" - 13 TPI GRADE 5 (MINIMUM) ALL-THREAD. SANDWICH HANGING ANGLES AND CEILING ANCHOR POINTS WITH 1/2" GRADE 5 (MINIMUM) STEEL FLAT WASHERS AND 1/2" - 13 TPI GRADE 5 (MINIMUM) HEX NUTS AS SHOWN. MUST USE DOUBLED HEX NUT CONFIGURATION BENEATH HOOD HANGING ANGLES AND ABOVE CEILING ANCHORS. MAINTAIN 1/4" OF EXPOSED THREADS BENEATH BOTTOM HEX NUT. TORQUE ALL HEX NUTS TO 57 FT-LBS.



ASSEMBLY INSTRUCTIONS

HANGING ANGLE MUST BE SUPPORTED WITH 1/2" - 13 TPI GRADE 5 (MINIMUM) ALL-THREAD. SANDWICH HANGING ANGLES AND CEILING ANCHOR POINTS WITH 1/2" GRADE 5 (MINIMUM) STEEL FLAT WASHERS AND 1/2" - 13 TPI GRADE 5 (MINIMUM) HEX NUTS AS SHOWN. MUST USE DOUBLED HEX NUT CONFIGURATION ABOVE CEILING ANCHORS. SINGLE HEX NUT BENEATH HANGING ANGLE IS ACCEPTABLE FOR FULL LENGTH HANGING ANGLES. MAINTAIN 1/4" OF EXPOSED THREADS BENEATH BOTTOM HEX NUT. TORQUE ALL HEX NUTS TO 57 FT-LBS.

REVISIONS

| DESCRIPTION | DATE |
|-------------|------|
| | |
| | |
| | |
| | |

econ·air
www.econair.com

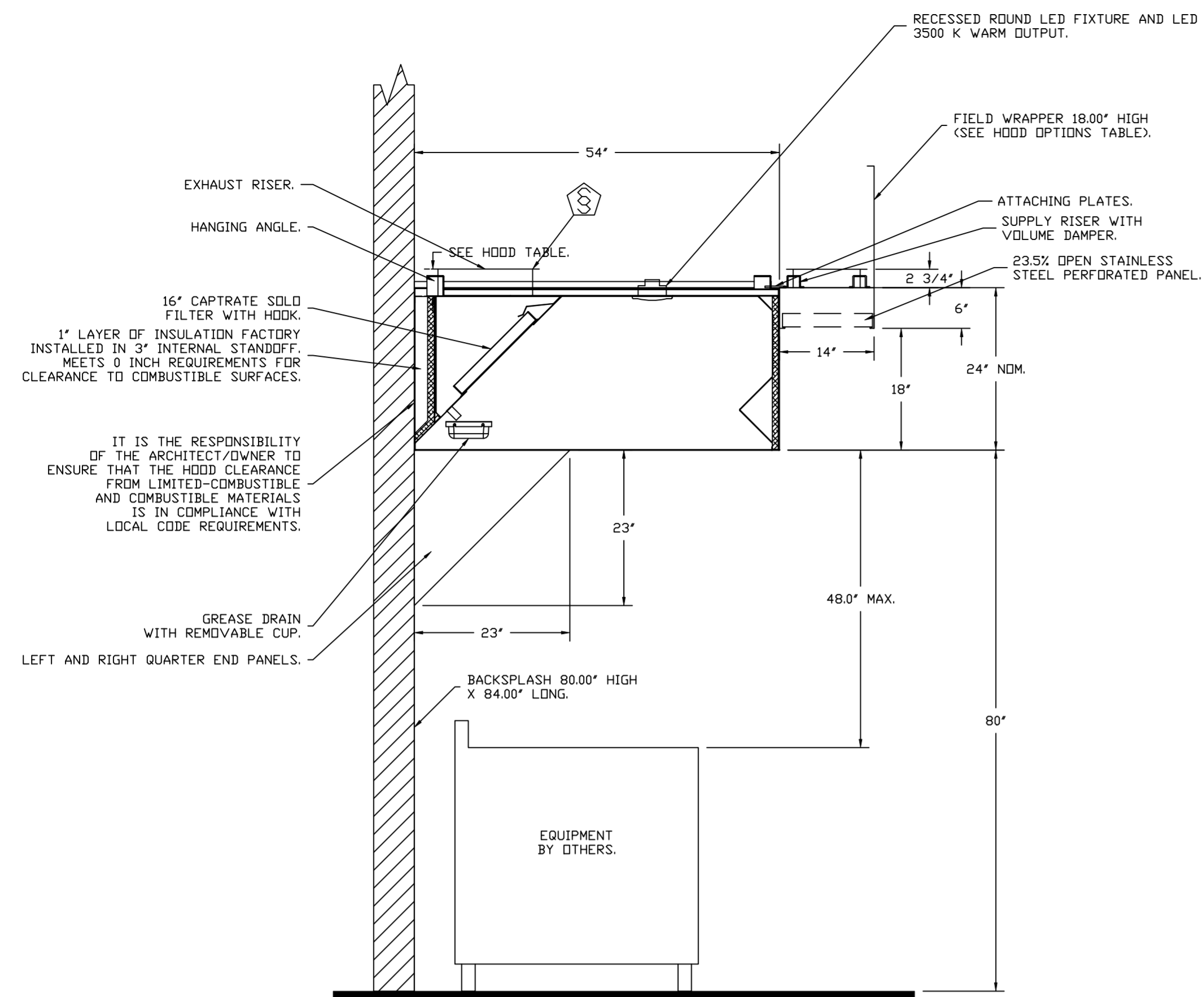
Wilmington, NC Mechanical
www.econair.com

PO Box 7525, Wilmington, NC, 28403 PHONE: EMAIL: reg154@econair.com

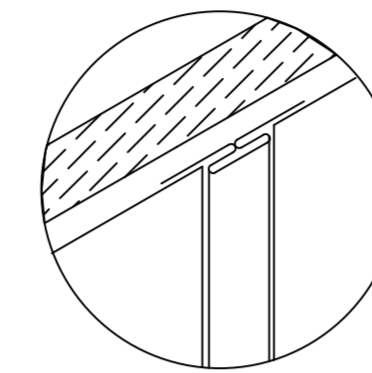
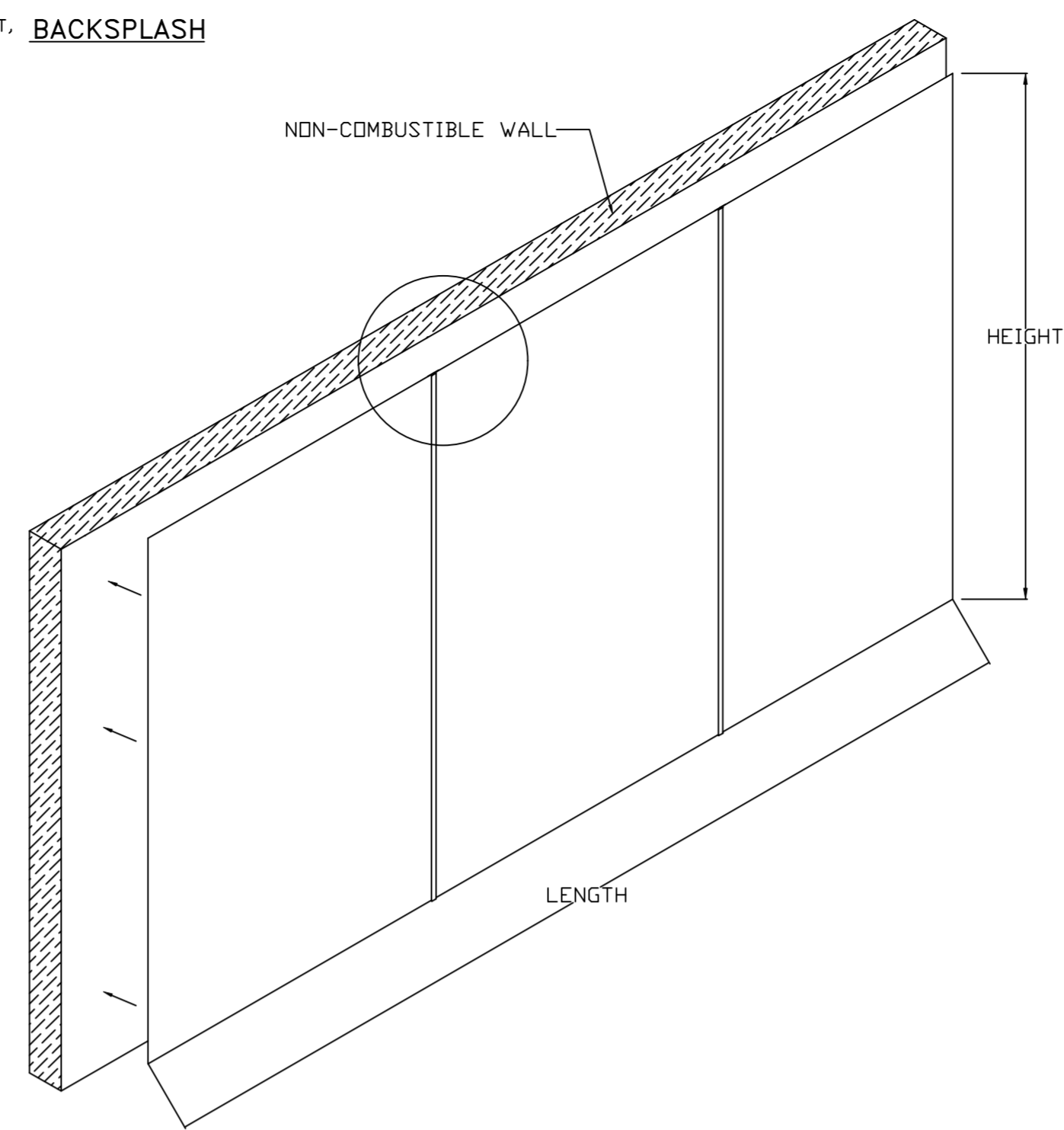
Senters Kitchen Hood
40 Rawls Club Road,
Fuquay-Varina, NC, 27526

DATE: 11/9/2023
DWG.#: 5705900
DRAWN BY: ben.demchod
SCALE: 3/4" = 1'-0"
MASTER DRAWING

SHEET NO.
1



SECTION VIEW - MODEL 5424EX-2-PSP-F
HOOD - #1



BACKSPLASH PANELS
SLIDE INTO DIVIDER
BAR

- BACKSPLASH IS NOT
INSULATED AND IS UNSUITABLE
FOR INSTALL AGAINST
COMBUSTIBLE WALLS

| REVISIONS | |
|-------------|------|
| DESCRIPTION | DATE |
| | |
| | |
| | |
| | |



Econ·air

 www.econair.com

Wilmington, NC Mechanical

 PO Box 7525, Wilmington, NC, 28403 PHONE: EMAIL: reg154@econair.com

** Senters Kitchen Hood
 40 Rawls Club Road,
 Fuquay-Varina, NC, 27526

DATE: 11/9/2023
DWG.#: 5705900
DRAWN BY: ben.demcho
SCALE: 3/4" = 1'-0"
MASTER DRAWING

SHEET NO.
 2

FIRE SYSTEM INFORMATION - JOB#5705900

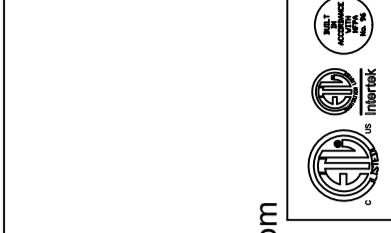
| FIRE SYSTEM NO | TAG | TYPE | SIZE | MAX FP | DESIGN FP | INSTALLATION | |
|----------------|-----|---------|---------|--------|-----------|--------------------|------------------|
| | | | | | | SYSTEM | LOCATION ON HOOD |
| 1 | | TANK FS | 4.0/4.0 | 40 | 18 | FIRE CABINET RIGHT | RIGHT, HOOD 1 |

FIRE SYSTEM PARTS LIST KEY

| FIRE SYSTEM NO | TAG | KEY NUMBER - PART DESCRIPTION | QTY BY FACTORY | QTY BY DIST |
|----------------|---|---|----------------|-------------|
| 1 | | 0 - 0 - 12-F28021-32144-0T-360 DUCT FIRE THERMOSTAT WITH 12 FOOT WIRE LEADS. NO, CLOSE DN TEMP RISE AT 360°F. | 1 | 0 |
| | | 0 - 0 - 87-120042-001 SECONDARY ACTUATOR VALVE (SVA) - SINGLE ACTUATOR, REQUIRES PRIMARY RELEASE ACTUATOR, TANK FIRE SUPPRESSION. | 1 | 0 |
| | | 0 - 0 - 87-120045-001 HOSE, SECONDARY ACTUATOR HOSE, 7.5' BRAIDED STAINLESS STEEL, TANK FIRE SUPPRESSION. | 1 | 0 |
| | | 0 - 0 - 87-300001-001 TANK - PRESSURIZED TANK USED FOR TANK FIRE SUPPRESSION. | 2 | 0 |
| | | 0 - 0 - 87-300030-001 PRIMARY ACTUATOR KIT (PAK) - ACTUATOR AND RELEASE SOLENOID ASSEMBLY, ONE NEEDED PER FIRE SYSTEM, SUPERVISED, TANK FIRE SUPPRESSION. | 1 | 0 |
| | | 0 - 0 - 87-300152-001 HARDWARE, SVA BOLTS, TANK FIRE SUPPRESSION. | 8 | 0 |
| | | 0 - 0 - 9055455PC PRO PRESS 1/2 PRESS X PRESS 90 ELBOW LD. | 6 | 0 |
| | | 0 - 0 - 9097200PC PRO PRESS PC611 1/2 PRESS TEE LD. | 3 | 0 |
| | | 0 - 0 - 98694A115 HARDWARE, DATANKLOCK LOCKING BRACKET SQUARE NUTS 5/16" ZINC, TANK FIRE SUPPRESSION. | 4 | 0 |
| | | 0 - 0 - A0034332 JUNCTION BOX FOR MANUAL PULL STATION. 1.5' DEEP BACK BOX, RED COLOR. | 1 | 0 |
| | | 0 - 0 - B1145 3/8" BLACK IRON 90 ELL. | 2 | 0 |
| | | 0 - 0 - DATANKLOCK DISCHARGE ADAPTER TANK LOCKING PLATE FOR FIRE SYSTEM TANK INSTALLATION IN UTILITY CABINETS, TANK FIRE SUPPRESSION. | 2 | 0 |
| | | 0 - 0 - TANK STRAP TANK STRAP - USED FOR TANK FIRE SUPPRESSION. | 6 | 0 |
| | | 0 - 0 - TFS-UCTANKBRACKET TANK BRACKET FOR FIRE SYSTEM TANK INSTALLATION IN UTILITY CABINETS, TANK FIRE SUPPRESSION. | 2 | 0 |
| | | 0 - 0 - WK-283952-000 DISCHARGE ADAPTER, TANK FIRE SUPPRESSION. | 2 | 0 |
| | | 16 - 16 - 79210 1/2" X 3/8" NPT MALE ADAPTER, VIEGA. | 4 | 0 |
| | | 16 - 16 - DL-F NOZZLE - TANK PROTECTION APPLIANCE COVERAGE NOZZLE (INCLUDES METAL BLOW OFF CAP, LANYARD, USED WITH CHROME-PLATED PIPE). | 4 | 0 |
| | | 26 - 26 - QSA-3/8 QUIK SEAL - 3/8" (UL). | 4 | 0 |
| | 34 - 34 - A0034331 24VDC SINGLE ACTION MANUAL ACTUATION DEVICE (PUSH/PULL STATION) WITH PROTECTIVE COVER, ONE (1) NORMALLY OPEN CONTACT. RED COLOR. | 1 | 0 | |
| | ADDITIONAL PARTS TO BE DETERMINED... | | | |

REVISIONS

| DESCRIPTION | DATE: |
|-------------|-------|
| | |
| | |
| | |
| | |



Recon-air
www.reconair.com

Wilmington, NC Mechanical
PO Box 7525, Wilmington, NC, 28403 PHONE: EMAIL: reg154@reconair.com

** Senters Kitchen Hood
40 Rawls Club Road,
Fuquay-Varina, NC, 27526

DATE: 11/9/2023

DWG.#:
5705900

DRAWN BY: ben.demcho

SCALE:
3/4" = 1'-0"

MASTER DRAWING

SHEET NO.
3

EXHAUST FAN INFORMATION - JOB#5705900

| FAN UNIT NO | TAG | QTY | FAN UNIT MODEL # | MANUFACTURER | CFM | ESP | RPM | MOTOR ENCL | HP | BHP | PHASE | VOLT | FLA | DISCHARGE VELOCITY | WEIGHT (LBS) | SDNES |
|-------------|-----|-----|------------------|--------------|------|-------|------|------------|-------|--------|-------|------|-----|--------------------|--------------|-------|
| 1 | KEF | 1 | EADU85H | ECON-AIR | 1350 | 1.000 | 1232 | DDP | 0.750 | 0.3380 | 3 | 208 | 2.6 | 427 FPM | 95 | 9.4 |

MUA FAN INFORMATION - JOB#5705900

| FAN UNIT NO | TAG | QTY | FAN UNIT MODEL # | BLOWER | HOUSING | MIN CFM | DESIGN CFM | ESP | RPM | MOTOR ENCL | HP | BHP | PHASE | VOLT | FLA | MCA | MOC | WEIGHT (LBS) | SDNES |
|-------------|--------|-----|------------------|------------|---------|---------|------------|-------|------|------------|-------|--------|-------|------|-----|------|-----|--------------|-------|
| 2 | KMAU-1 | 1 | EA-A1-15D | 15MF-1-MOD | A1 | - | 1100 | 0.500 | 1294 | DDP | 0.750 | 0.3390 | 3 | 208 | 2.5 | 3.2A | 15A | 348 | 12.3 |

FAN OPTIONS

| FAN UNIT NO | TAG | QTY | DESCRIPTION |
|-------------|--------|-----|---|
| 1 | KEF | 1 | GREASE BOX |
| | | 1 | 2 YEAR PARTS WARRANTY |
| | | 1 | INSULATION OPTION FOR VBANK FILTER SECTION |
| 2 | KMAU-1 | 1 | GRAVITY BACKDRAFT DAMPER FOR SIZE 1 HOUSING |
| | | 1 | A1 INDOOR HANGING OPTION - INCLUDES 2 HSA125 HANGING SPRING ISOLATORS PER UNI-STRUT |
| | | 1 | OPPOSITE SIDE SUPPLY FAN CONTROLS |
| | | 1 | 2 YEAR PARTS WARRANTY |

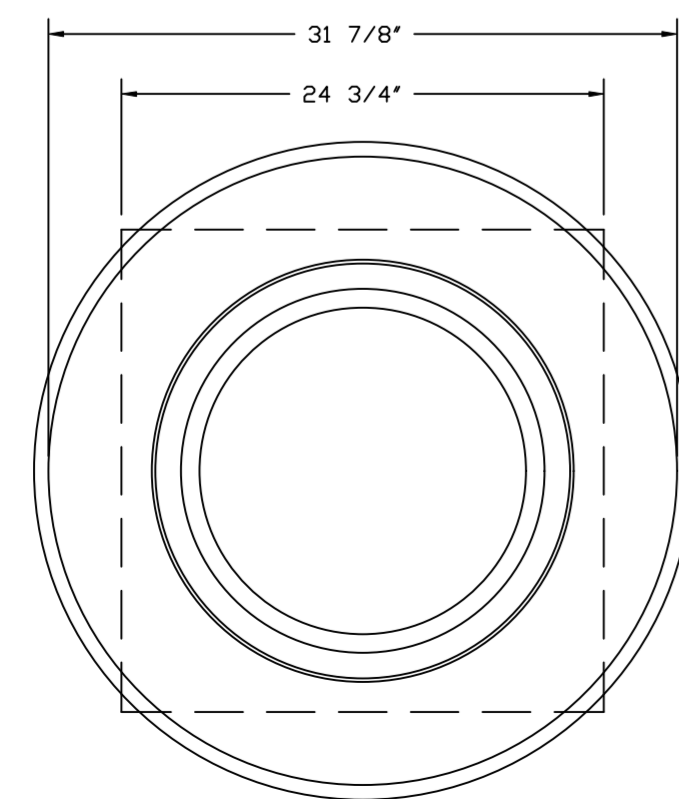
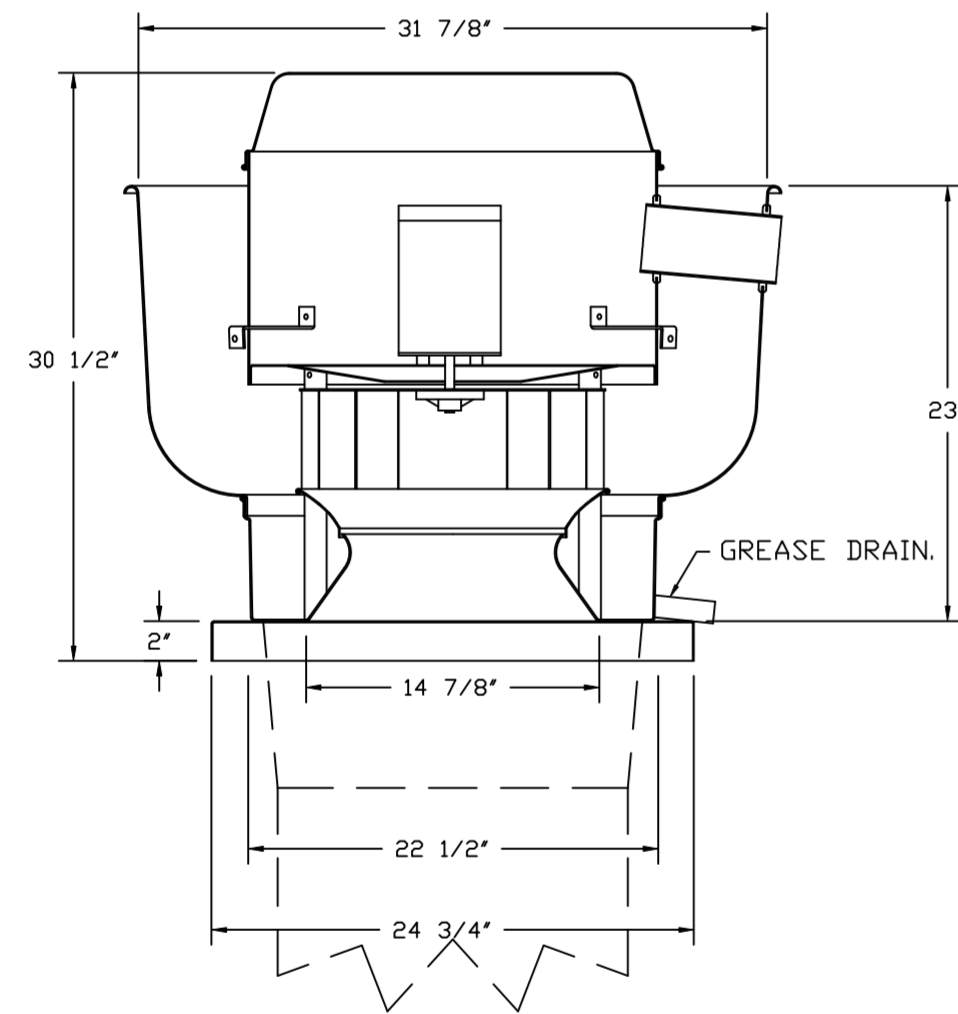
FAN ACCESSORIES

| FAN UNIT NO | TAG | EXHAUST | | | | SUPPLY | | | | | | | |
|-------------|--------|------------|----------------|------------|----------------|----------------|------------------|------------|--|--|--|--|--|
| | | GREASE CUP | GRAVITY DAMPER | WALL MOUNT | SIDE DISCHARGE | GRAVITY DAMPER | MOTORIZED DAMPER | WALL MOUNT | | | | | |
| 1 | KEF | YES | | | | | | | | | | | |
| 2 | KMAU-1 | | | | YES | YES | | | | | | | |

CURB ASSEMBLIES

| NO | ON FAN | TAG | WEIGHT | ITEM | SIZE |
|----|--------|-----|--------|------|--|
| 1 | # 1 | KEF | 41 LBS | CURB | 23.000"W X 23.000"L X 24.000"H 5.000:12.000 PITCH ALONG LENGTH, RIGHT VENTED HINGED. |

FAN #1 EADU85H - EXHAUST FAN (KEF)



TOP VIEW

FEATURES:

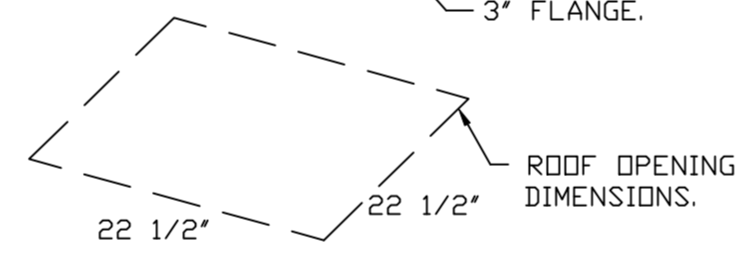
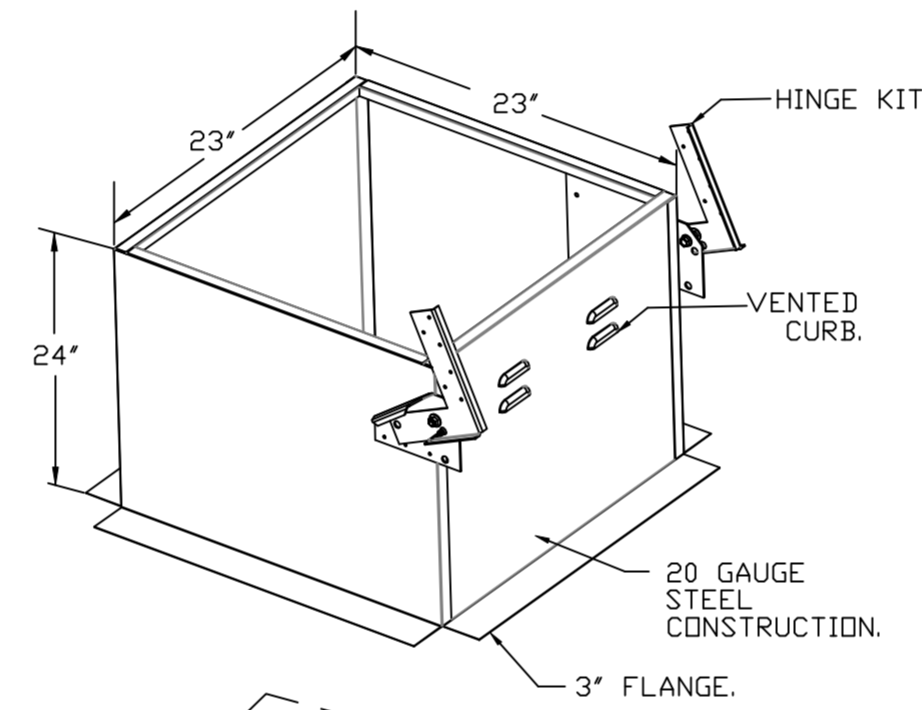
- DIRECT DRIVE CONSTRUCTION (NO BELTS/PULLEYS).
- ROOF MOUNTED FANS.
- RESTAURANT MODEL.
- UL705 AND UL762 AND ULC-S645
- VARIABLE SPEED CONTROL.
- INTERNAL WIRING.
- THERMAL OVERLOAD PROTECTION (SINGLE PHASE).
- HIGH HEAT OPERATION 300°F (149°C).
- GREASE CLASSIFICATION TESTING.
- NEMA 3R SAFETY DISCONNECT SWITCH.

NORMAL TEMPERATURE TEST
EXHAUST FAN MUST OPERATE CONTINUOUSLY WHILE EXHAUSTING AIR AT 300°F (149°C) UNTIL ALL FAN PARTS HAVE REACHED THERMAL EQUILIBRIUM, AND WITHOUT ANY DETERIORATING EFFECTS TO THE FAN WHICH WOULD CAUSE UNSAFE OPERATION.

ABNORMAL FLARE-UP TEST
EXHAUST FAN MUST OPERATE CONTINUOUSLY WHILE EXHAUSTING BURNING GREASE VAPORS AT 600°F (316°C) FOR A PERIOD OF 15 MINUTES WITHOUT THE FAN BECOMING DAMAGED TO ANY EXTENT THAT COULD CAUSE AN UNSAFE CONDITION.

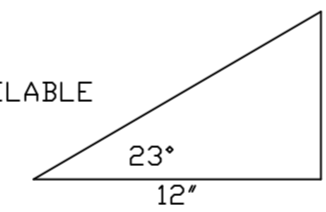
OPTIONS

- GREASE BOX.
- 2 YEAR PARTS WARRANTY.



PITCHED CURBS ARE AVAILABLE FOR PITCHED ROOFS.

SPECIFY PITCH:
EXAMPLE: 7/12 PITCH = 30° SLOPE.



REVISIONS

| DESCRIPTION | DATE: |
|-------------|-------|
| | |
| | |
| | |
| | |

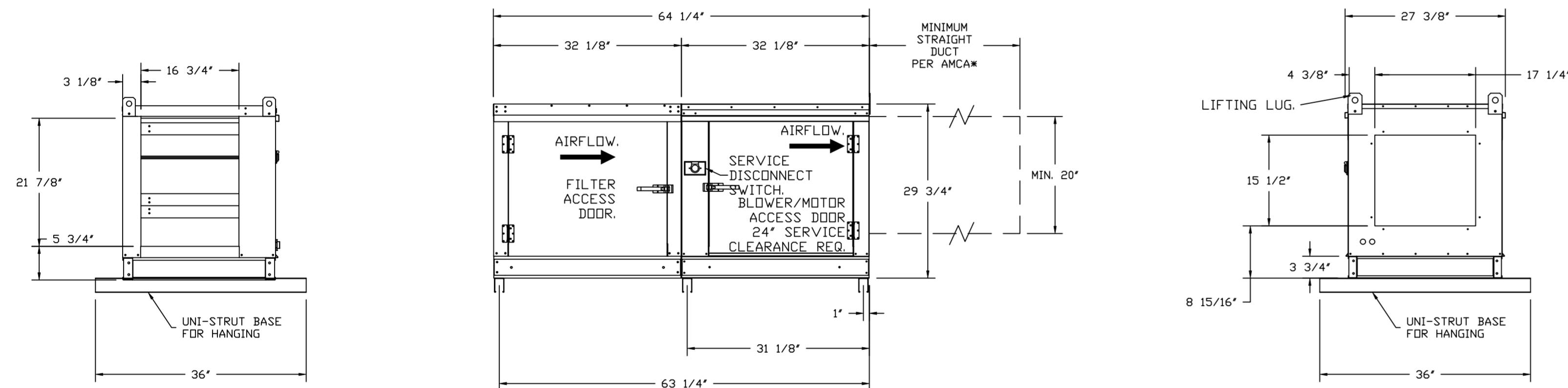
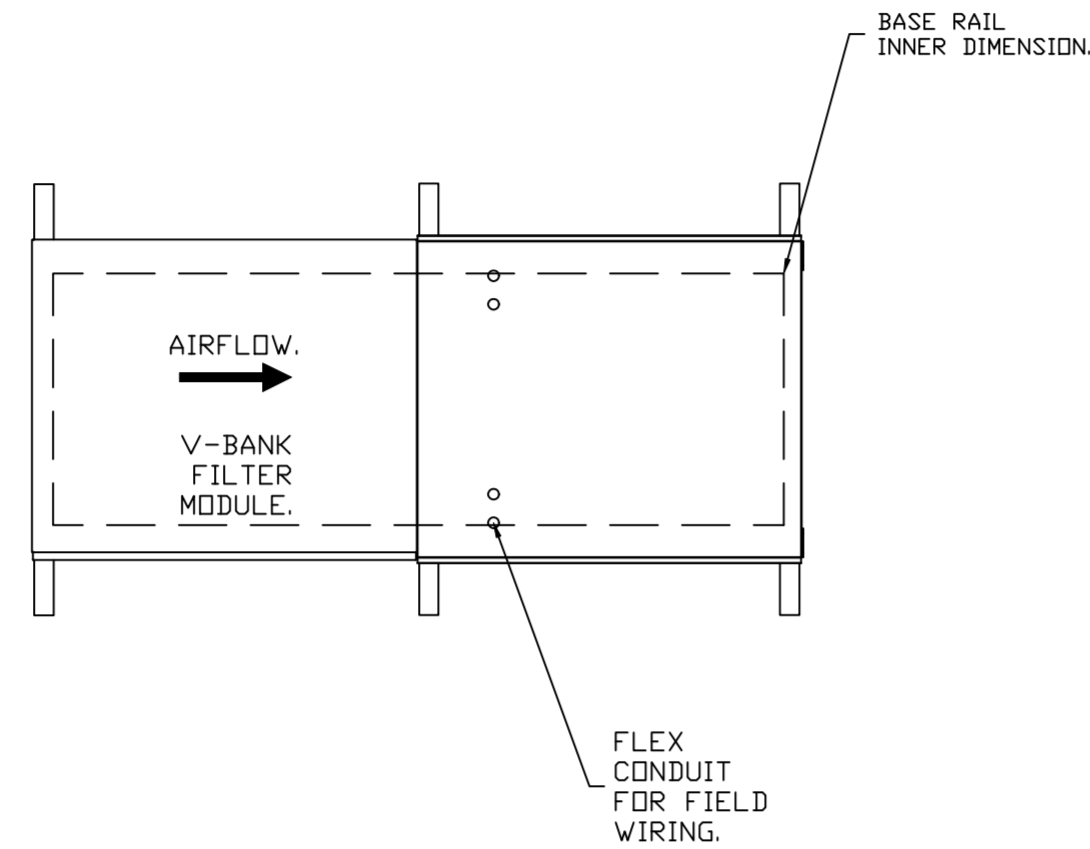
Recon-air
www.econair.com
Wilmington, NC Mechanical
PO Box 7525, Wilmington, NC, 28403 PHONE: EMAIL: reg154@econair.com

** Senters Kitchen Hood
40 Rawls Club Road,
Fuquay-Varina, NC, 27526

DATE: 11/9/2023
DWG.#: 5705900
DRAWN BY: ben.demch
SCALE: 3/4" = 1'-0"
MASTER DRAWING

- FAN #2 EA-A1-1SD - SUPPLY FAN (KMAU-1)
1. UNTEMPERED SUPPLY UNIT WITH 15" MIXED FLOW DIRECT DRIVE FAN IN SIZE #1 HOUSING.
 2. V-BANK EZ FILTERS - INDOOR.
 3. SIDE DISCHARGE - AIR FLOW LEFT -> RIGHT.
 4. "INSULATION" FOR V-BANK INTAKE OPTION.
 5. GRAVITY BACK DRAFT DAMPER, 16" WIDE X 18" HIGH, STANDARD GALVANIZED CONSTRUCTION, 1 1/4" REAR FLANGE, FDR SIZE 1 UNTEMPERED FAN HOUSING (S1B).
 6. INDOOR HANGING CRADLE FOR THE SIZE 1 UNTEMPERED UNIT. 2 HSA125 HANGING ISOLATORS PER UNI-STRUT INCLUDED.
 7. MOUNT MOTOR AND DISCONNECT ON OPPOSITE SIDE OF FAN.
 8. HINGED DOUBLE WALL INSULATED DOOR ASSEMBLY (BURNER/BLOWER SECTION).
 9. 2 YEAR PARTS WARRANTY.

NOTE: SUPPLY DUCT MUST BE INSTALLED TO MEET SMACNA STANDARDS. A MINIMUM STRAIGHT DUCT LENGTH MUST BE MAINTAINED DOWNSTREAM OF UNIT DISCHARGE AS OUTLINED IN AMCA PUBLICATION 201. WHEN USING RECTANGULAR DUCTWORK, ELBOWS MUST BE RADIUS THROAT, RADIUS BACK WITH TURNING VANES. FLEXIBLE DUCTWORK AND SQUARE THROAT/SQUARE BACK ELBOWS SHOULD NOT BE USED. ANY TRANSITION AND/OR TURNS IN THE DUCTWORK WILL CAUSE SYSTEM EFFECT. SYSTEM EFFECT WILL DRASTICALLY INCREASE STATIC PRESSURE AND REDUCE AIRFLOW. DO NOT RELY ON UNIT TO SUPPORT DUCT IN ANY WAY. FAILURE TO PROPERLY SIZE DUCTWORK MAY CAUSE SYSTEM EFFECTS AND REDUCE PERFORMANCE OF THE EQUIPMENT. SUGGESTED STRAIGHT DUCT SIZE IS 20" x 20".



GREASE DUCT & CHIMNEY SPECIFICATIONS:
 PROVIDE GREASE DUCT EQUAL TO ECON-AIR MODEL "EDW" ROUND 20 GAUGE 430 STAINLESS STEEL DUCTWORK. MODEL "EDW" IS LISTED TO UL-1978 AND IS INSTALLED USING "V" CLAMP LOCKING CONNECTIONS SEALED WITH 3M FIRE BARRIER 2000 PLUS. MODEL "EDW" DOES NOT REQUIRE WELDING PROVIDING IT HAS BEEN INSTALLED PER THE MANUFACTURES INSTALLATION GUIDE.
 PROVIDE RATED ACCESS DOORS AT EVERY CHANGE IN DIRECTION AND EVERY 12' ON CENTER. PER MANUFACTURES LISTING MODEL "EDW" HORIZONTAL RUNS LESS THAN 75 FT. CAN BE SLOPED 1/16" PER 12", HORIZONTAL RUNS MORE THAN 75 FT. CAN BE SLOPED 3/16" PER 12". DUCT SHOULD BE SLOPED AS MUCH AS POSSIBLE TO REDUCE THE CHANCE OF GREASE ACCUMULATION IN HORIZONTAL RUNS.
 IF THE DUCT OR CHIMNEY IS WITHIN 18 INCHES OF COMBUSTIBLE MATERIAL, PROVIDE UL-2221 OR UL-103 HT LISTED DOUBLE WALL GREASE DUCT OR DOUBLE WALL CHIMNEY EQUAL TO ECON-AIR MODEL "EDW- 2R, 2R TYPE HT, 3R, OR 3Z" ROUND 20 GAUGE 430 STAINLESS INNER DUCT INSULATED WITH A 24 GAUGE 430 STAINLESS OUTER SHELL.

CUSTOMER APPROVAL TO MANUFACTURE:

APPROVED AS NOTED

APPROVED WITH NO EXCEPTION TAKEN

REVISE AND RESUBMIT

SIGNATURE _____

YOUR TITLE _____ DATE _____

| REVISIONS | |
|-------------|-------|
| DESCRIPTION | DATE: |
| | |
| | |
| | |
| | |

econ·air
www.econair.com

Wilmington, NC Mechanical
PO Box 7525, Wilmington, NC, 28403 PHONE: EMAIL: reg154@econair.com

** Senters Kitchen Hood
 40 Rawls Club Road,
 Fuquay-Varina, NC, 27526

DATE: 11/9/2023
 DWG.#: 5705900
 DRAWN BY: ben.demch

SCALE: 3/4" = 1'-0"
 MASTER DRAWING

SHEET NO.
5

GREASE BOX INSTALLATION

GREASE BOX
REV.#2 08/19/02

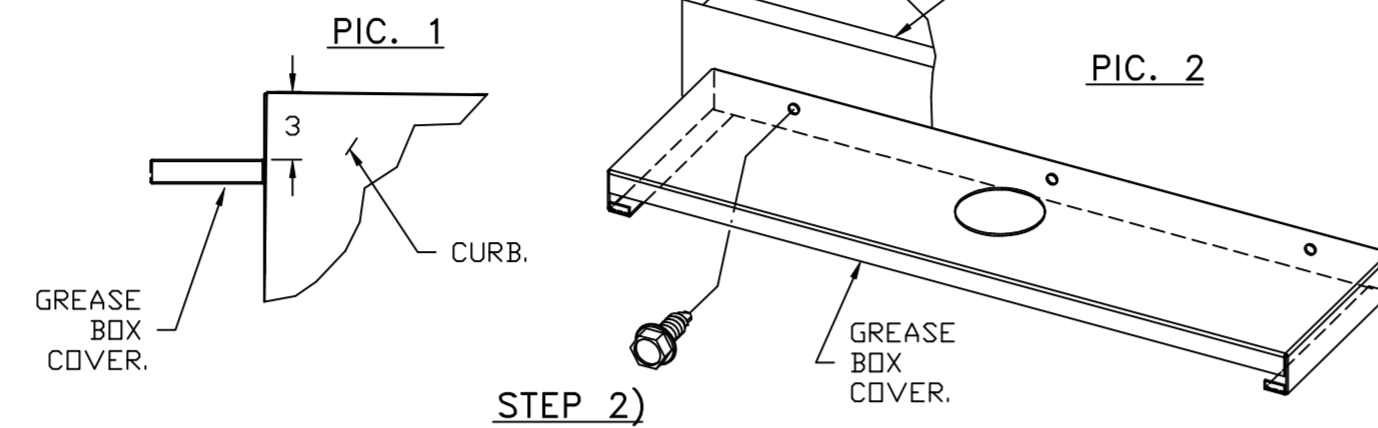
PARTS INCLUDED

- GREASE BOX.
- GREASE BOX COVER.
- GREASE PIPE.
- SHEET METAL SCREWS
3 - LONG (3/4" LG.).

GREASE BOX FIELD INSTALLATION

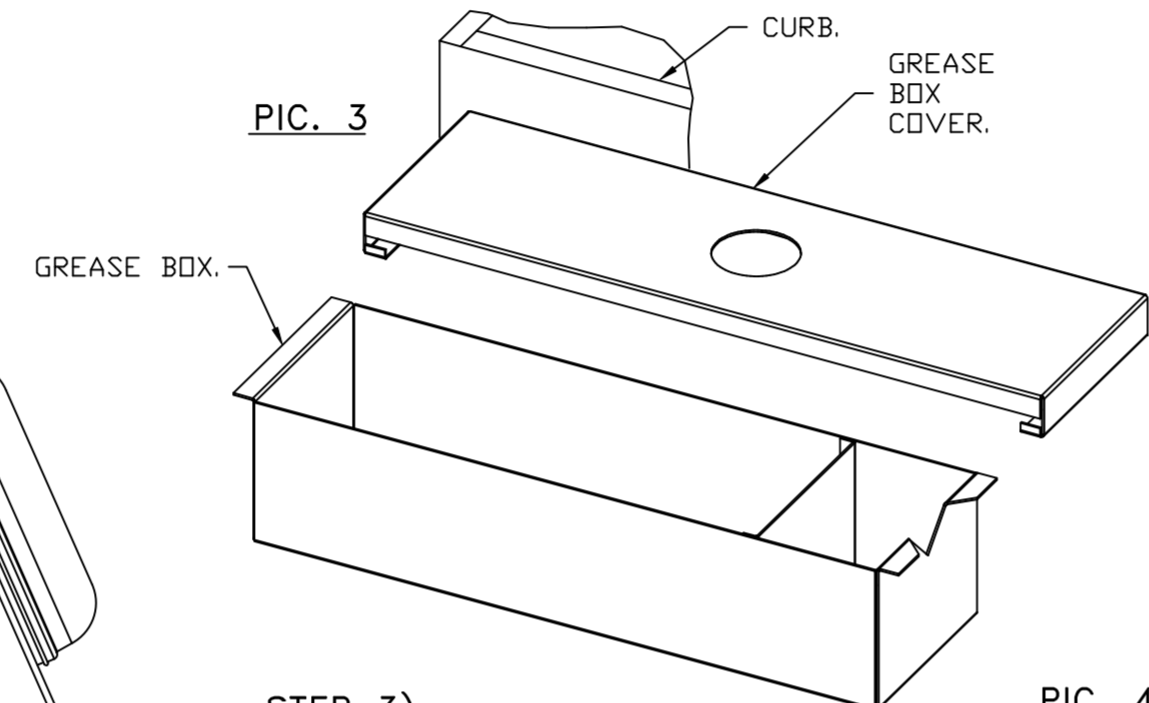
STEP 1)

ATTACH GREASE BOX COVER TO THE CURB, HOLD 3" DIMENSION AS SHOWN ON PIC. 1. SCREW GREASE BOX COVER TO CURB USING (3) LONG (3/4" LG.) SCREWS AS SHOWN ON PIC. 2.



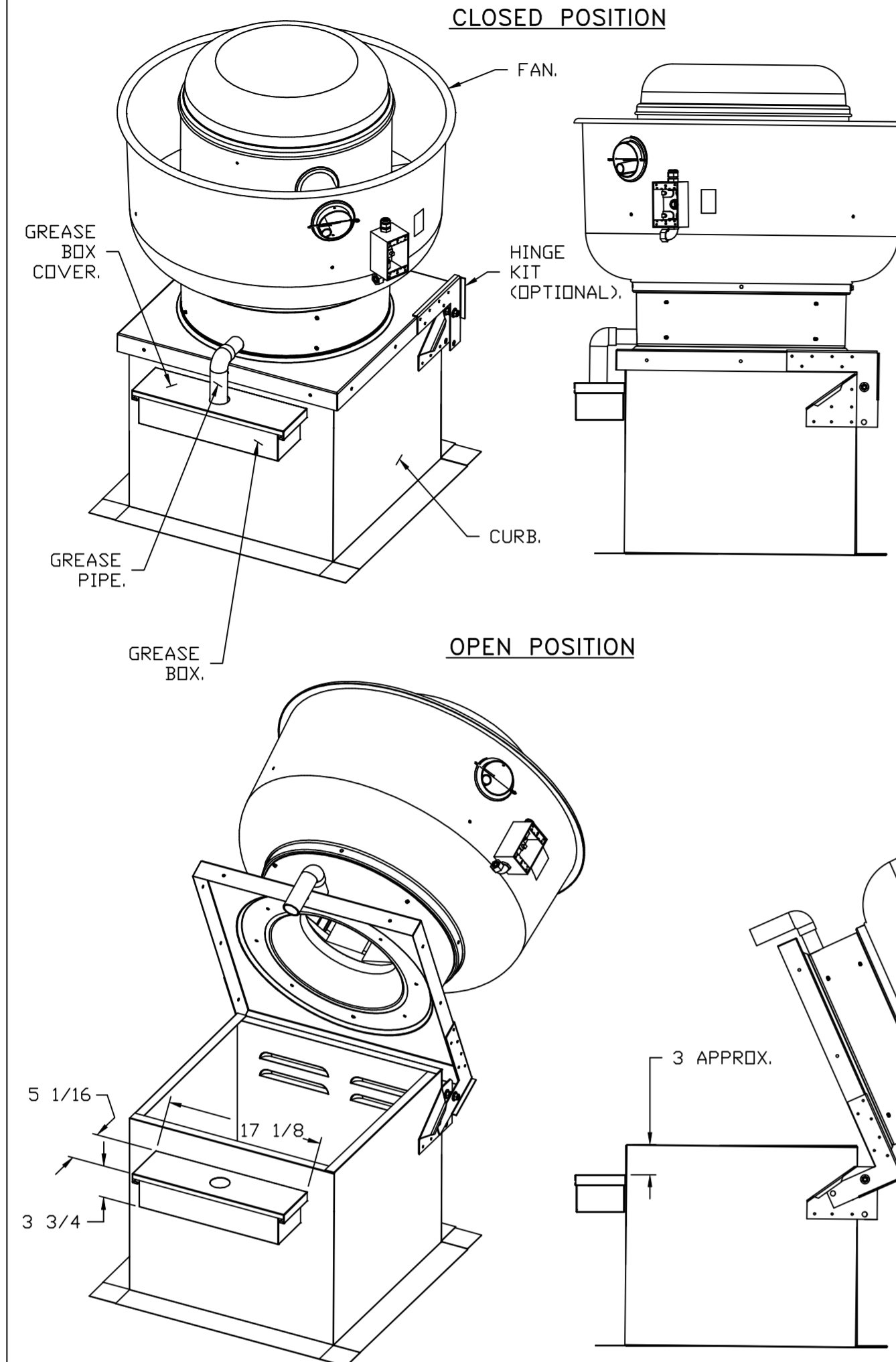
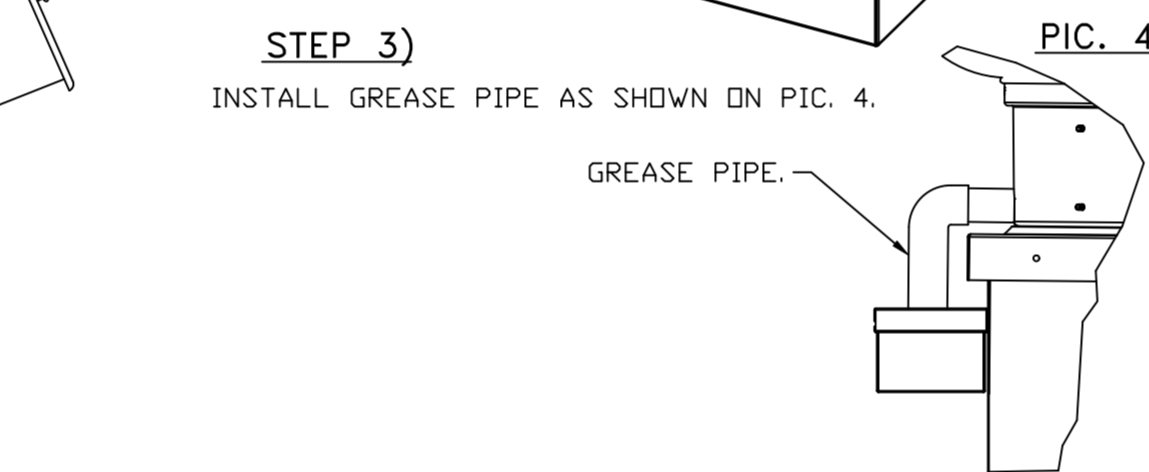
STEP 2)

ATTACH GREASE BOX TO GREASE BOX COVER, SLIDE AND DROP. AS SHOWN ON PIC. 3.



STEP 3)

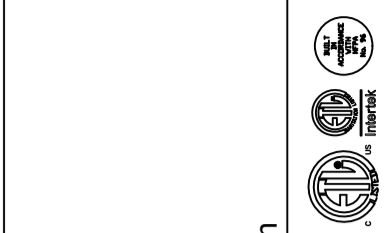
INSTALL GREASE PIPE AS SHOWN ON PIC. 4.



*NOTE: UL 705 INSTALL.

REVISIONS

| REVISIONS | DESCRIPTION | DATE: |
|-----------|-------------|-------|
| △ | | |
| △ | | |
| △ | | |
| △ | | |



Secon·air
www.seconair.com

Wilmington, NC Mechanical
PO Box 7525, Wilmington, NC, 28403 PHONE: EMAIL: reg154@seconair.com

** Senters Kitchen Hood
40 Rawls Club Road,
Fuquay-Varina, NC, 27526

DATE: 11/9/2023

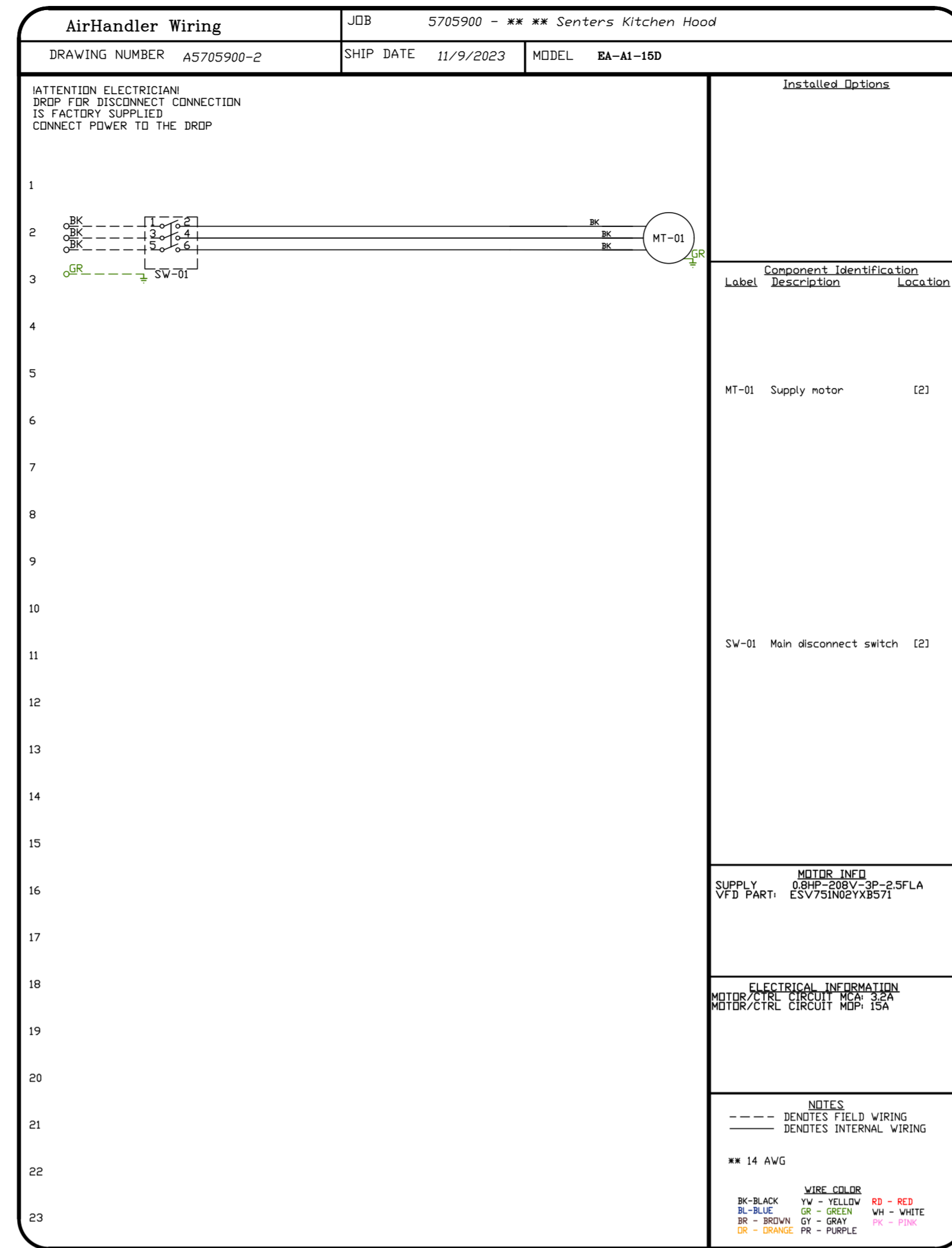
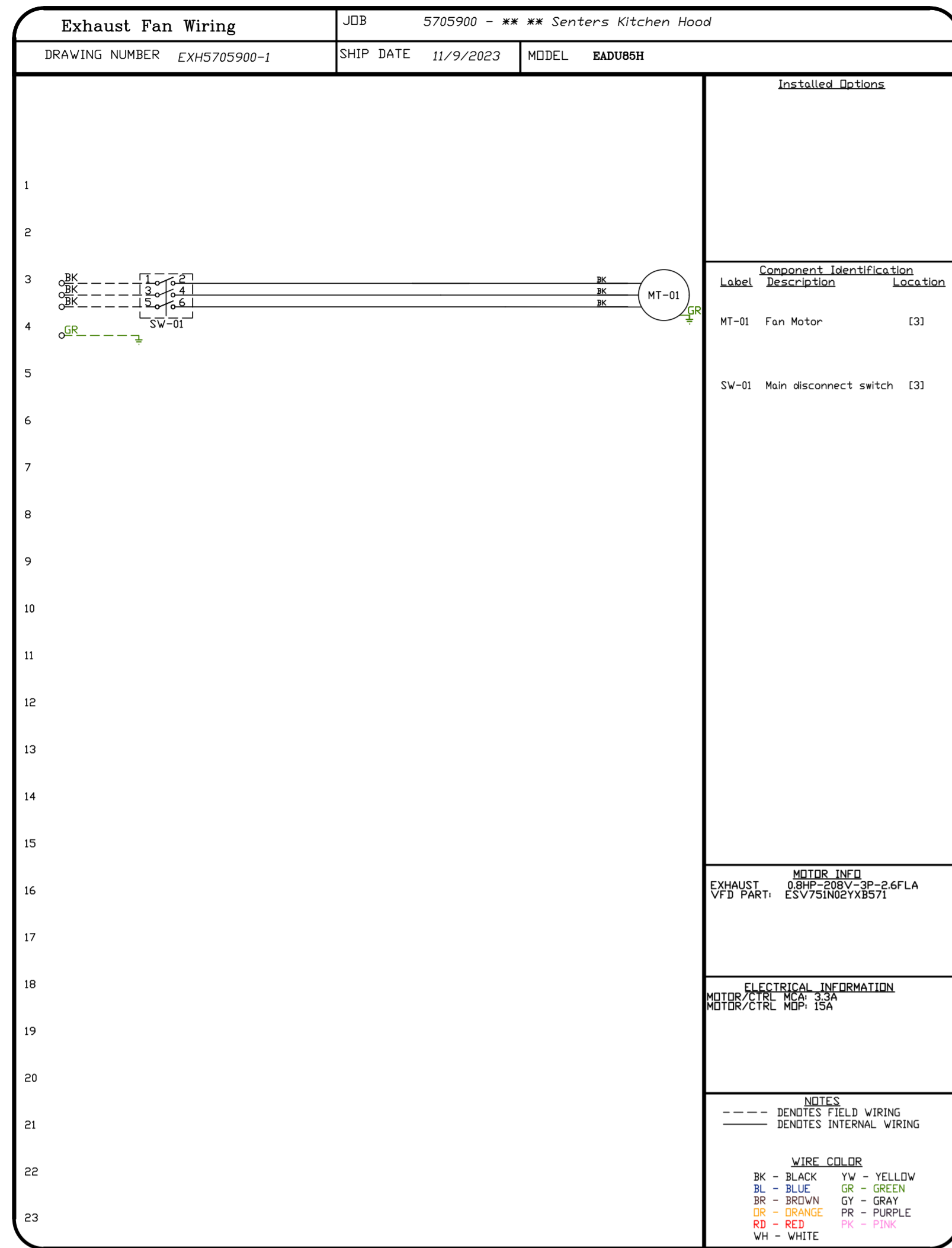
DWG.#:
5705900

DRAWN BY: ben.demcho

SCALE:
3/4" = 1'-0"

MASTER DRAWING

SHEET NO.
6



| REVISIONS | |
|-------------|-------|
| DESCRIPTION | DATE: |
| | |
| | |
| | |
| | |

Recon-air
www.reconair.com

Wilmington, NC Mechanical
PO Box 7525, Wilmington, NC, 28403 PHONE: EMAIL: reg154@reconair.com

** ** Senters Kitchen Hood
40 Rawls Club Road,
Fuquay-Varina, NC, 27526

DATE: 11/9/2023

DWG.#:
5705900

DRAWN BY: ben.demcho

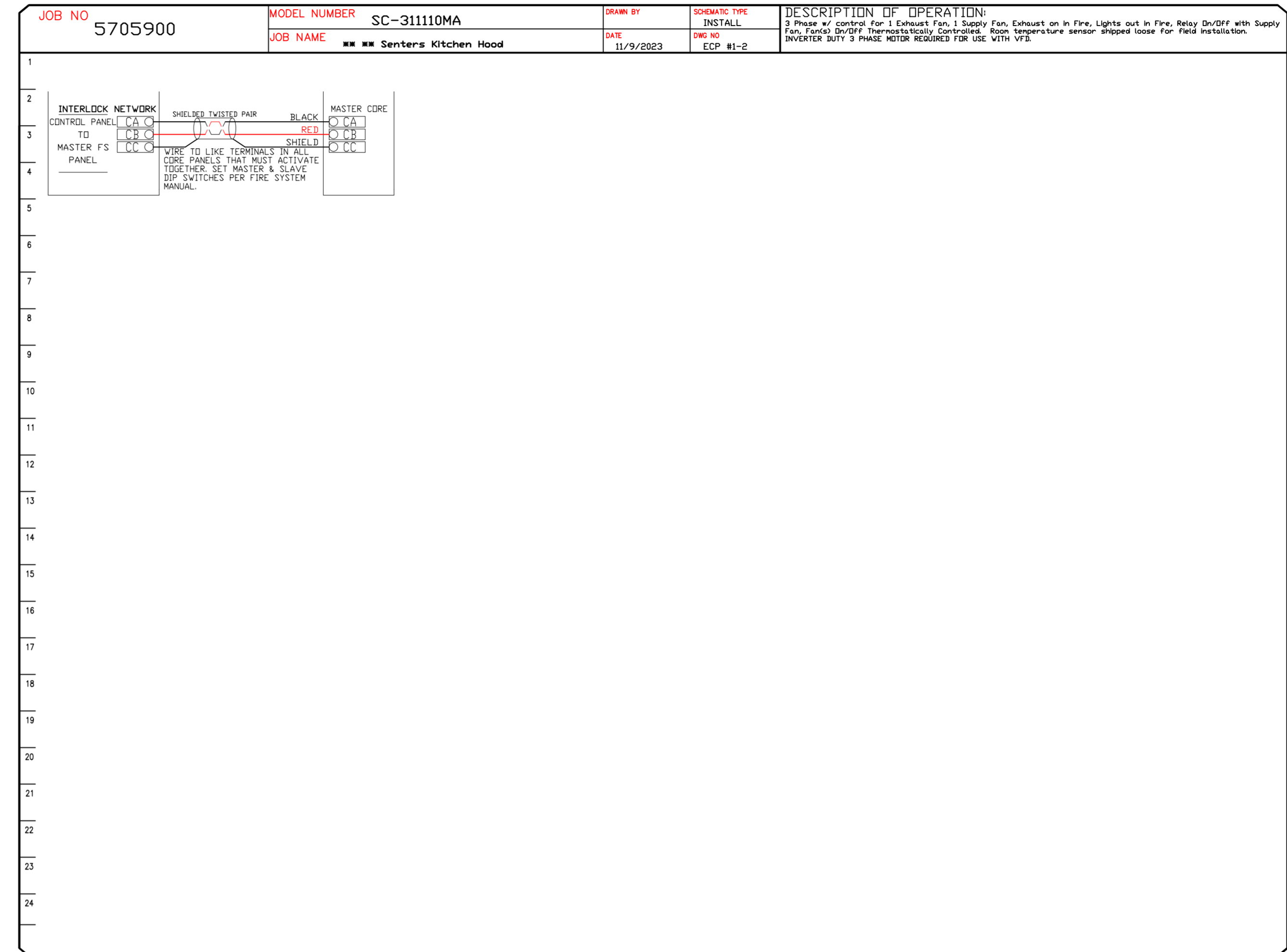
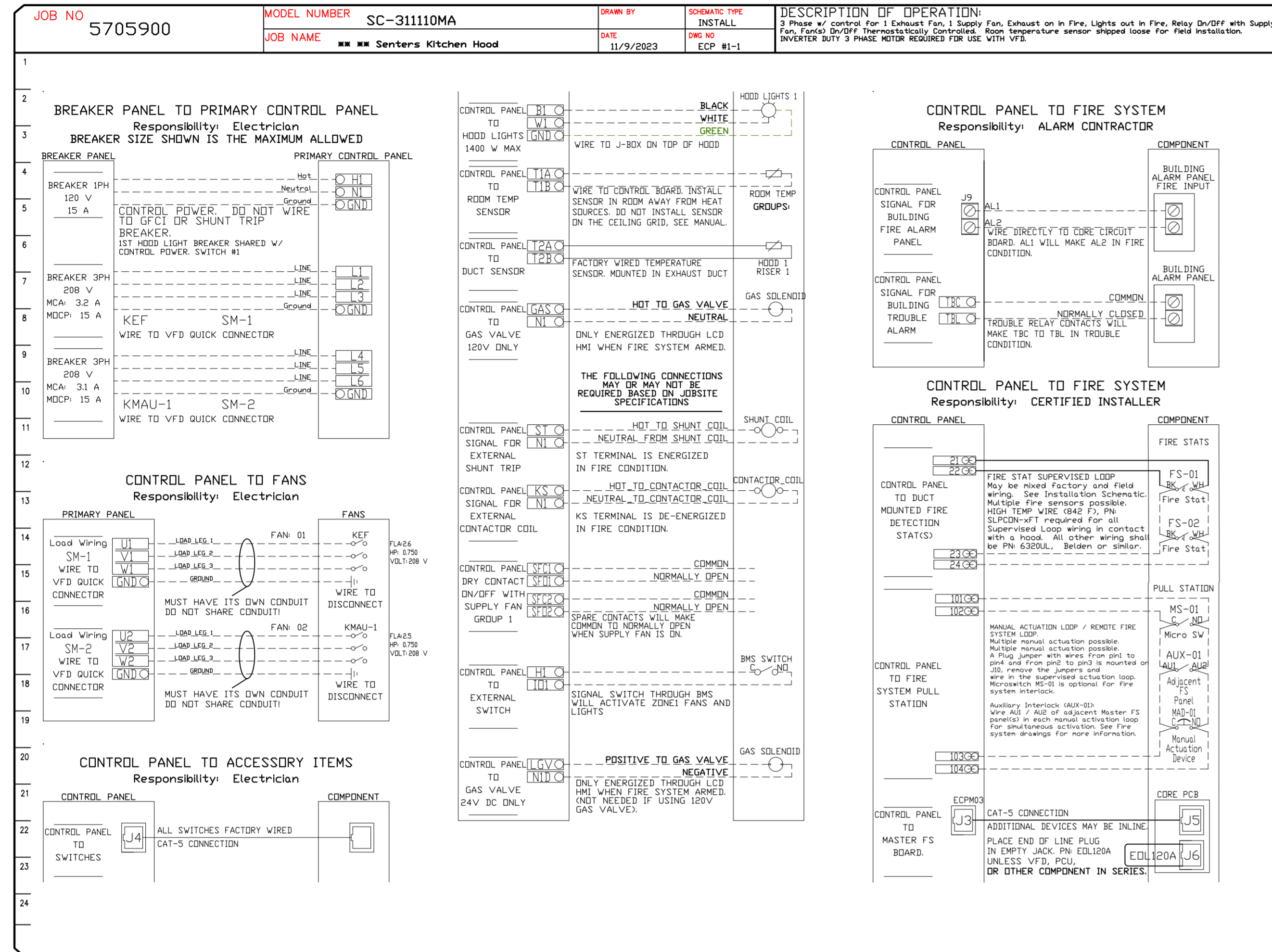
SCALE:
3/4" = 1'-0"

MASTER DRAWING

SHEET NO.
7

ELECTRICAL PACKAGE - JOB#5705900

| NO | TAG | PACKAGE # | LOCATION | SWITCHES | | OPTION | FANS CONTROLLED | | | | | |
|----|-----|-------------|-----------------------|-----------------------|----------|---|-----------------|---------|---|-------|------|-----|
| | | | | LOCATION | QUANTITY | | FAN TAG | TYPE | Φ | HP | VOLT | FLA |
| 1 | | SC-311110MA | UTILITY CABINET RIGHT | UTILITY CABINET RIGHT | 1 LIGHT | SMART CONTROLS THERMOSTATIC CONTROL W/ RELAY ON/OFF WITH SUPPLY | KEF | EXHAUST | 3 | 0.750 | 208 | 2.6 |
| | | | | HOOD # 1 | 1 FAN | | KMAU-1 | SUPPLY | 3 | 0.750 | 208 | 2.5 |



REVISIONS

| NO. | DESCRIPTION | DATE |
|-----|-------------|------|
| | | |
| | | |
| | | |
| | | |

www.econair.com

Wilmington, NC Mechanical

PO Box 7525, Wilmington, NC, 28403 PHONE: EMAIL: reg154@econair.com

***** Senters Kitchen Hood**
40 Rawls Club Road,
Fuquay-Varina, NC, 27526

DATE: 11/9/2023

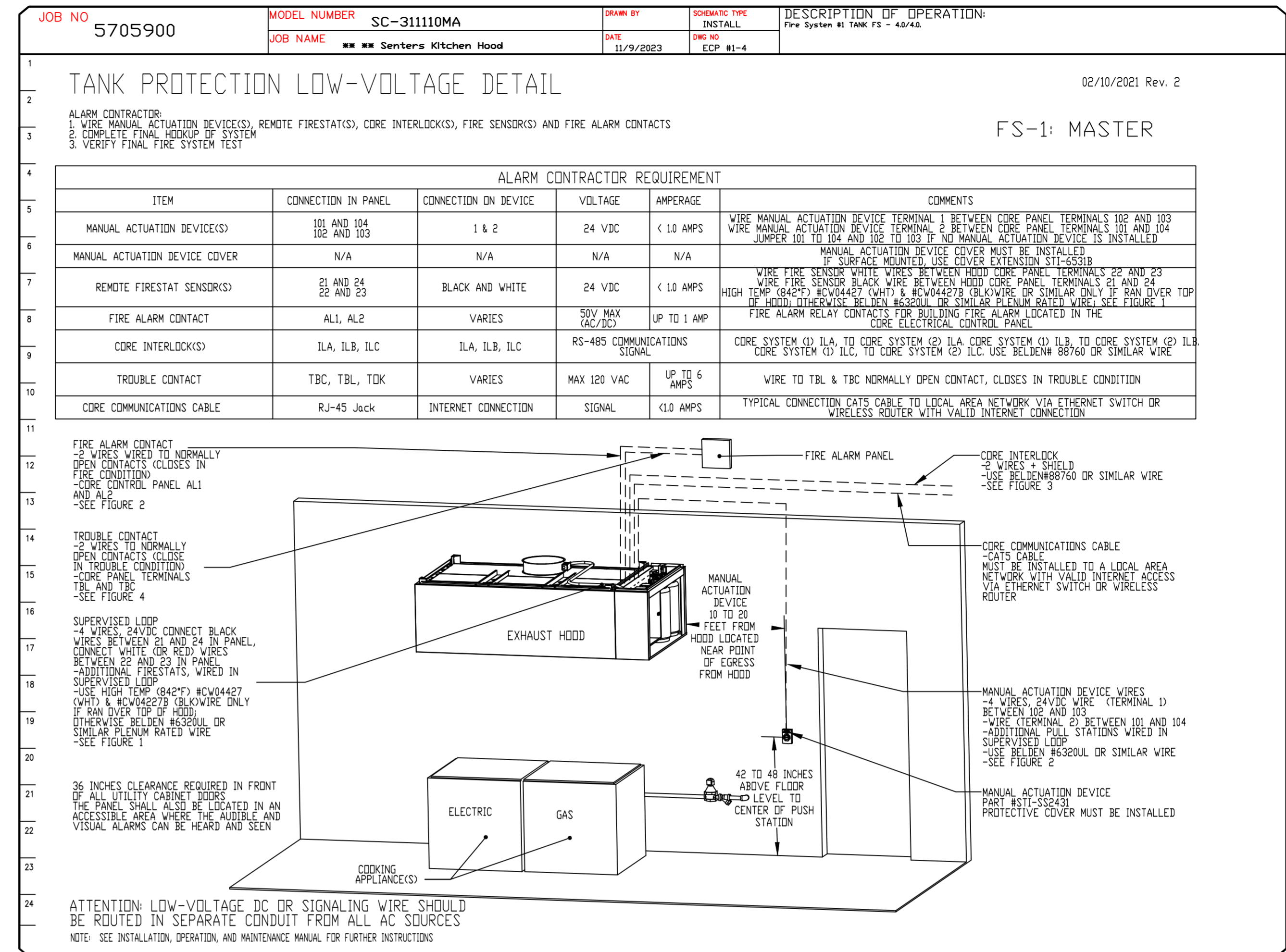
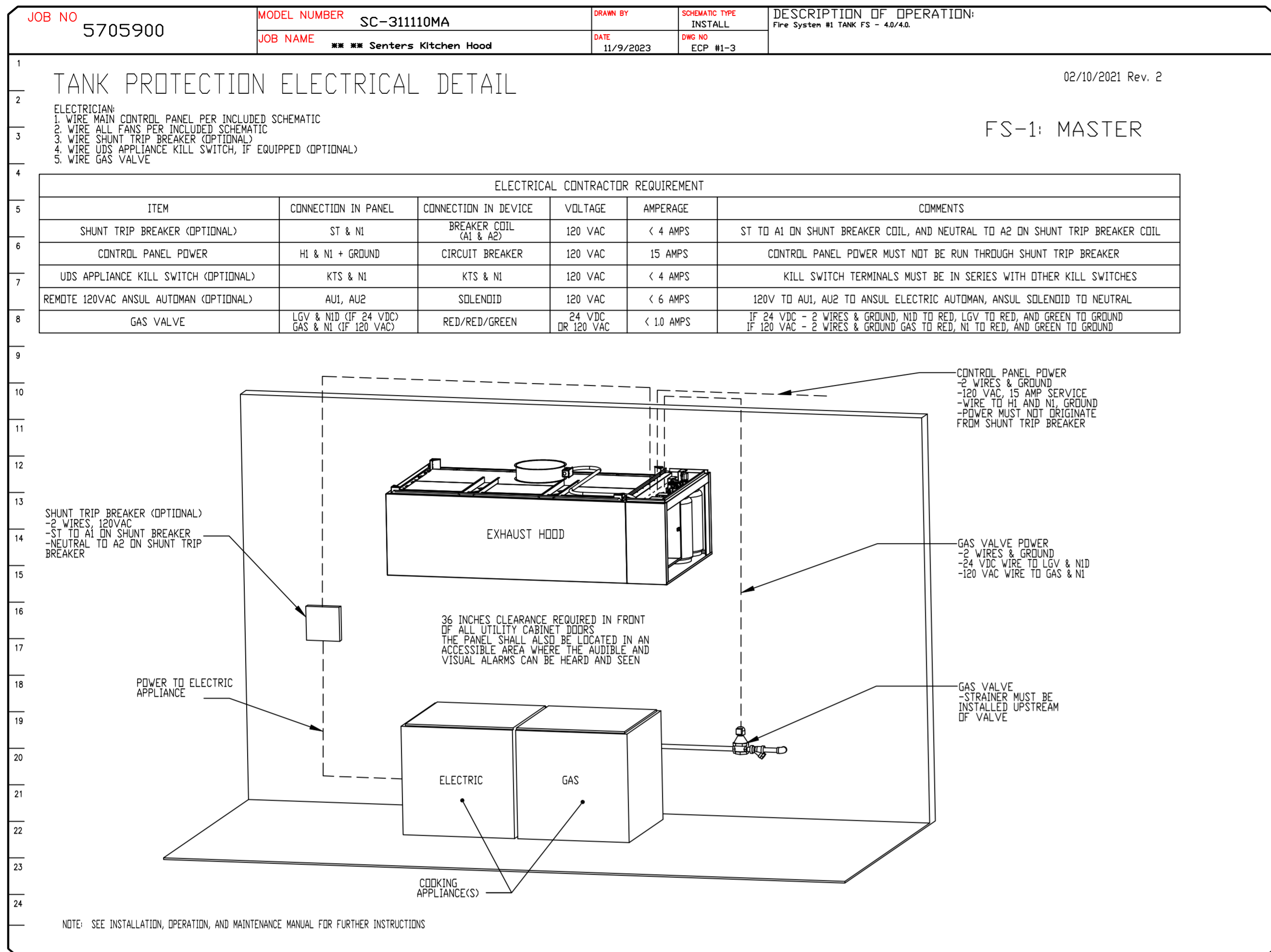
DWG.#: 5705900

DRAWN BY: ben.demch

SCALE: 3/4" = 1'-0"

MASTER DRAWING

SHEET NO.
8



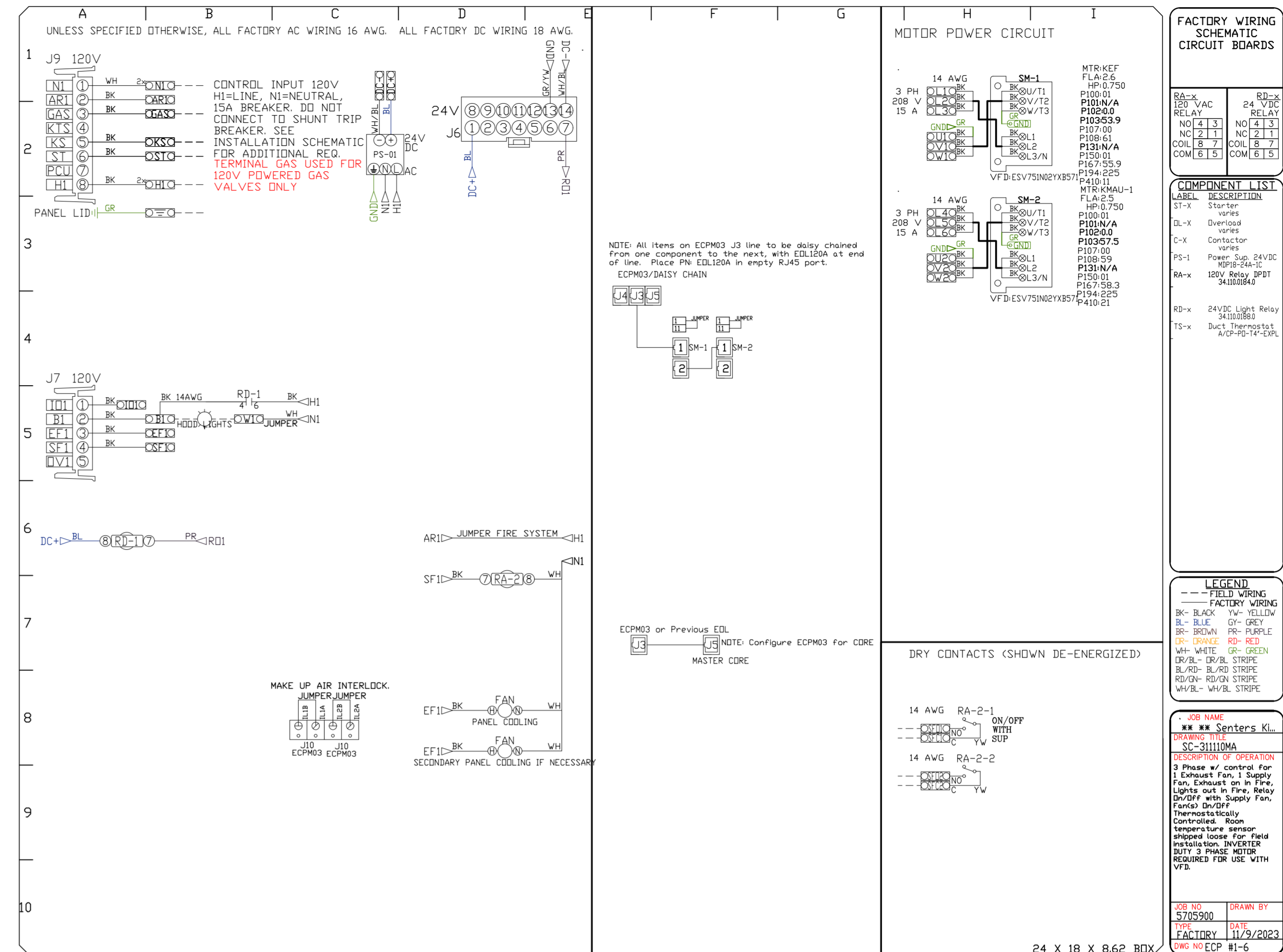
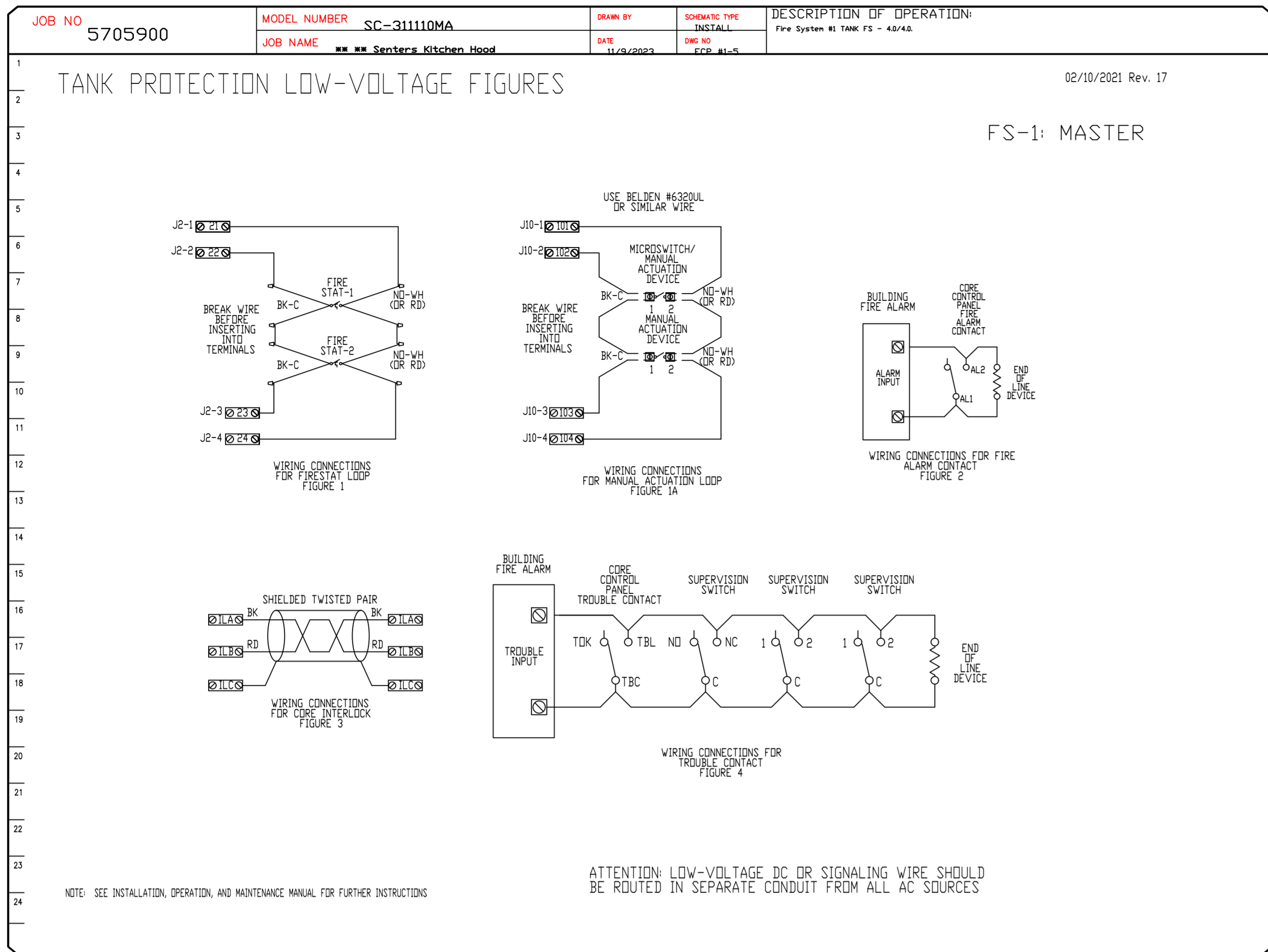
| REVISIONS | |
|-------------|------|
| DESCRIPTION | DATE |
| | |
| | |
| | |
| | |

www.econair.com
econair
 Wilmington, NC Mechanical
 PO Box 7525, Wilmington, NC, 28403 PHONE: EMAIL: reg154@econair.com

** Senters Kitchen Hood
 40 Rawls Club Road,
 Fuquay-Varina, NC, 27526

DATE: 11/9/2023
 DWG.#:
 5705900
 DRAWN BY: ben.demch
 SCALE:
 3/4" = 1'-0"
 MASTER DRAWING

SHEET NO.
 9



| REVISIONS | |
|-------------|------|
| DESCRIPTION | DATE |
| | |
| | |
| | |
| | |
| | |

Wilmington, NC Mechanical

www.econair.com

PO Box 7525, Wilmington, NC, 28403 PHONE: EMAIL: reg154@econair.com

*** Senters Kitchen Hood
40 Rawls Club Road,
Fuquay-Varina, NC, 27526

DATE: 11/9/2023

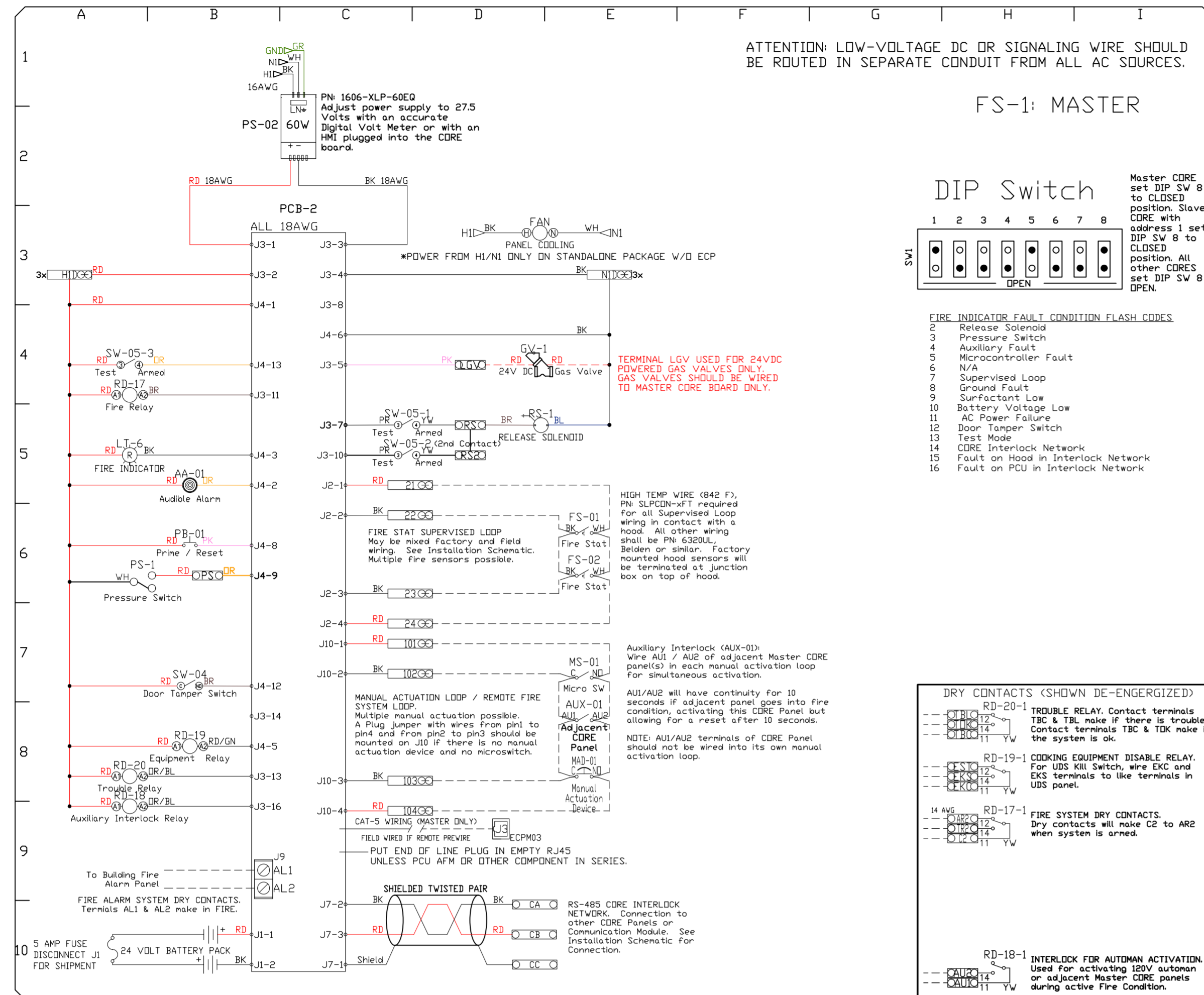
DWG.#:
5705900

DRAWN BY:
ben.demch

SCALE:
3/4" = 1'-0"

MASTER DRAWING

SHEET NO.
10



FACTORY WIRING SCHEMATIC CORE FIRE PROTECTION

| | |
|---------------|---------------|
| RELAY NO. 1 | RELAY NO. 2 |
| NC 2 1 1 | NC 2 1 1 |
| COM 6 5 5 | COM 6 5 5 |

COMPONENT LIST

LEGEND

DRY CONTACTS (SHOWN DE-ENERGIZED)

RD-18-1 INTERLOCK FOR AUTOMN ACTIVATION

USE FOR ACTIVATING 120V AUTOMON OR ADJACENT MASTER CORE PANELS DURING ACTIVE FIRE CONDITION.

DATE: 11/9/2023

DRAWN BY: ben.demch

REVISIONS

| NO. | DESCRIPTION | DATE |
|-----|-------------|------|
| 1 | | |
| 2 | | |
| 3 | | |
| 4 | | |

www.econair.com

econ·air

Wilmington, NC Mechanical

PO Box 7525, Wilmington, NC, 28403 PHONE: EMAIL: reg154@econair.com

*** Senters Kitchen Hood
40 Rowls Club Road,
Fuquay-Varina, NC, 27526

DATE: 11/9/2023

DWG.#: 5705900

DRAWN BY: ben.demch

SCALE: 3/4" = 1'-0"

MASTER DRAWING

SHEET NO. 11

DUCTWORK #1 PARTS - JOB#5705900 DOUBLE WALL

| TAG | PART # | CFM | GPM | ZONE | COVEREDBY | SP | WEIGHT | VELOCITY | QTY | DESCRIPTION |
|--------------|--------------------|------|-----|------|-----------|---------|--------|----------|-----|--|
| E1 | DW18DWRISER-2 | 1350 | | | | -0.64 | 0.00 | 0.00 | 1 | UNAVAILABLE PART OR IT IS MISSING FROM THE PARTS LIST. |
| P1 | DW1445DWASY-2R-S | 1350 | | | | -0.0262 | 19.87 | 1262.85 | 1 | DOUBLE WALL DUCT - 14" INNER 45 DUCT - 2 LAYERS REDUCED CLEARANCE - 18" STAINLESS STEEL OUTER SHELL. |
| P2 | DW1445DWASY-2R-S | 1350 | | | | -0.0375 | 19.87 | 1262.85 | 1 | DOUBLE WALL DUCT - 14" INNER 45 DUCT - 2 LAYERS REDUCED CLEARANCE - 18" STAINLESS STEEL OUTER SHELL. |
| P3 | DW1423DWLT-2R-S | 1350 | | | | -0.005 | 30.75 | 1262.85 | 1 | DOUBLE WALL DUCT - 14" INNER DUCT, 23" LONG - 2 LAYERS REDUCED CLEARANCE - 18" STAINLESS STEEL OUTER SHELL. |
| P4 | DW1447DWAJD-2R-S | 1350 | | | | -0.007 | 93.18 | 1262.85 | 1 | DOUBLE WALL ADJUSTABLE DUCT - 14" INNER DUCT - 2 LAYERS REDUCED CLEARANCE - 18" STAINLESS STEEL OUTER SHELL. MIN LENGTH = 11' / MAX LENGTH = 48.5' / ADJUSTMENT = 30.5' / ADJUSTABLE SECTION MAY NEED TO BE CUT. INCLUDES SINGLE AND DOUBLE WALL "V" CLAMPS. |
| P5 | DW144550DWLTP-2R-S | 1350 | | | | -0.011 | 61.01 | 1262.85 | 1 | DOUBLE WALL DUCT - 14" INNER DUCT, 45.5" LONG - 2 LAYERS REDUCED CLEARANCE - 18" STAINLESS STEEL OUTER SHELL - USED WITH TRANSITION PLATE. |
| P6 | DW2314TP | 1350 | | | | | 8.49 | 1262.85 | 1 | DUCT TO CURB TRANSITION, 23" CURB TO 14" DUCT, 16 GA ALUMINIZED. USED ON BDUI5, DU75 & 85. |
| | 3M-2000PLUS | | | | | -0.7267 | 0.00 | | | |
| | | | | | | | 0.80 | | 2 | DUCT - 3M FIRE BARRIER 2000 PLUS SILICONE - USED AS SEALANT TO SEAL DUCT JOINTS. |
| | DW14DWCLASY-2R-S | | | | | | 7.21 | | 2 | DUCT - 14" DUCT - 18" DOUBLE "V" CLAMP - 2R INSULATION & SINGLE "V" CLAMP INCLUDED - REDUCED CLEARANCE. |
| TOTAL WEIGHT | | | | | | | 249.19 | | | |

DOUBLE WALL FACTORY BUILT DUCTWORK

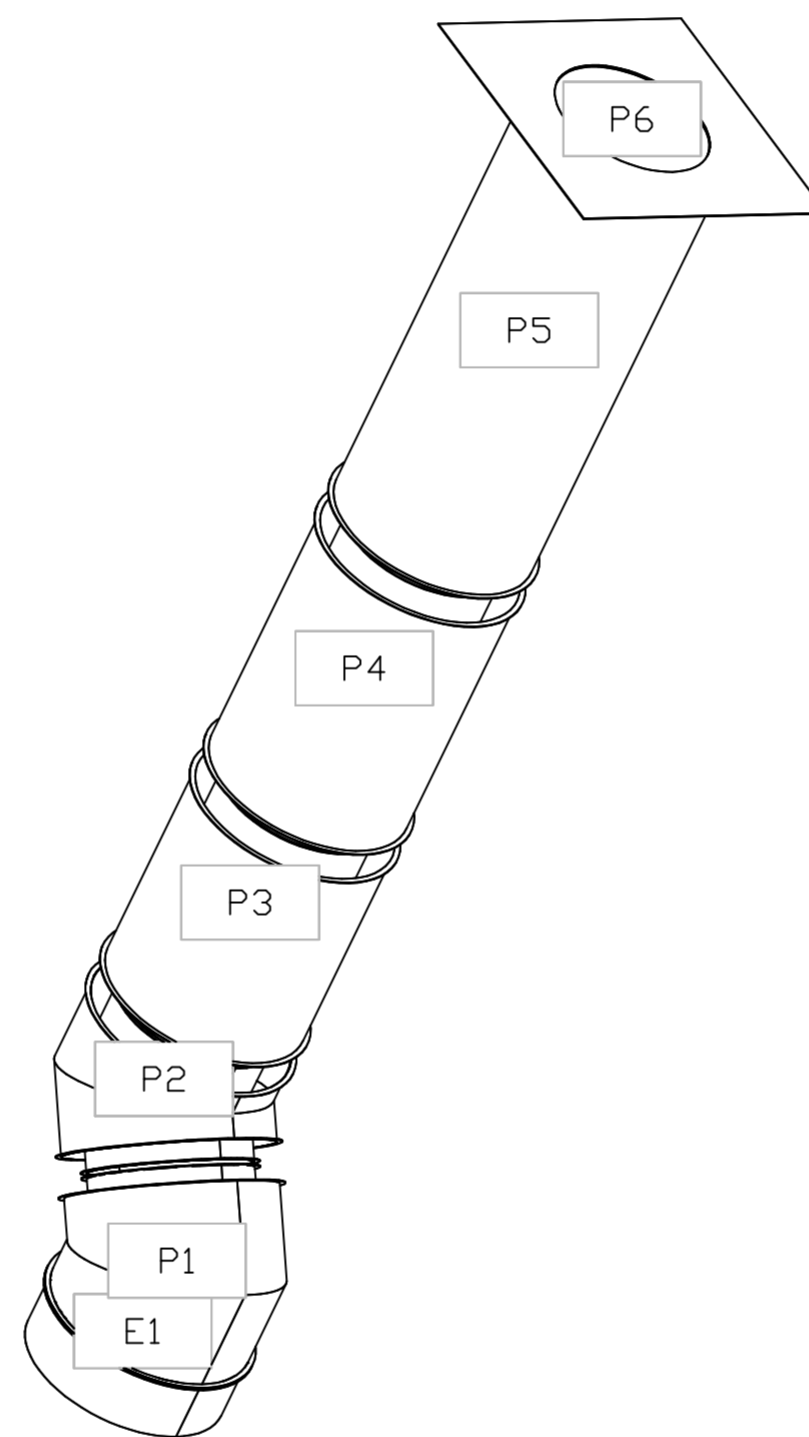
- ALL DUCTWORK IS REQUIRED TO BE INSTALLED WITH THE MAXIMUM SUPPORT SPACING LISTED BELOW.
- FOR A COMPLETE LIST OF APPROVED SUPPORT METHODS, SEE THE ENTIRE INSTALLATION AND OPERATION MANUAL.
- DUCTWORK SHALL SLOPE NOT LESS THAN 1/16" PER LINEAR FOOT TOWARDS THE HOOD OR AN APPROVED GREASE COLLECTION RESERVOIR.
- WHERE HORIZONTAL DUCTS EXCEED 75 FEET IN LENGTH, THE SLOPE SHALL NOT BE LESS THAN 3/16" PER LINEAR FOOT.

| HORIZONTAL | |
|---------------|----------------------|
| DUCT DIAMETER | SUPPORT SPACING (FT) |
| 5' | 7' |
| 6' | 7' |
| 7' | 7' |
| 8' | 7' |
| 10' | 7' |
| 12' | 7' |
| 14' | 7' |
| 16' | 7' |
| 18' | 5' |
| 20' | 5' |
| 22' | 5' |
| 24' | 5' |
| 26' | 5' |
| 28' | 5' |
| 30' | 5' |
| 32' | 5' |
| 34' | 5' |
| 36' | 5' |

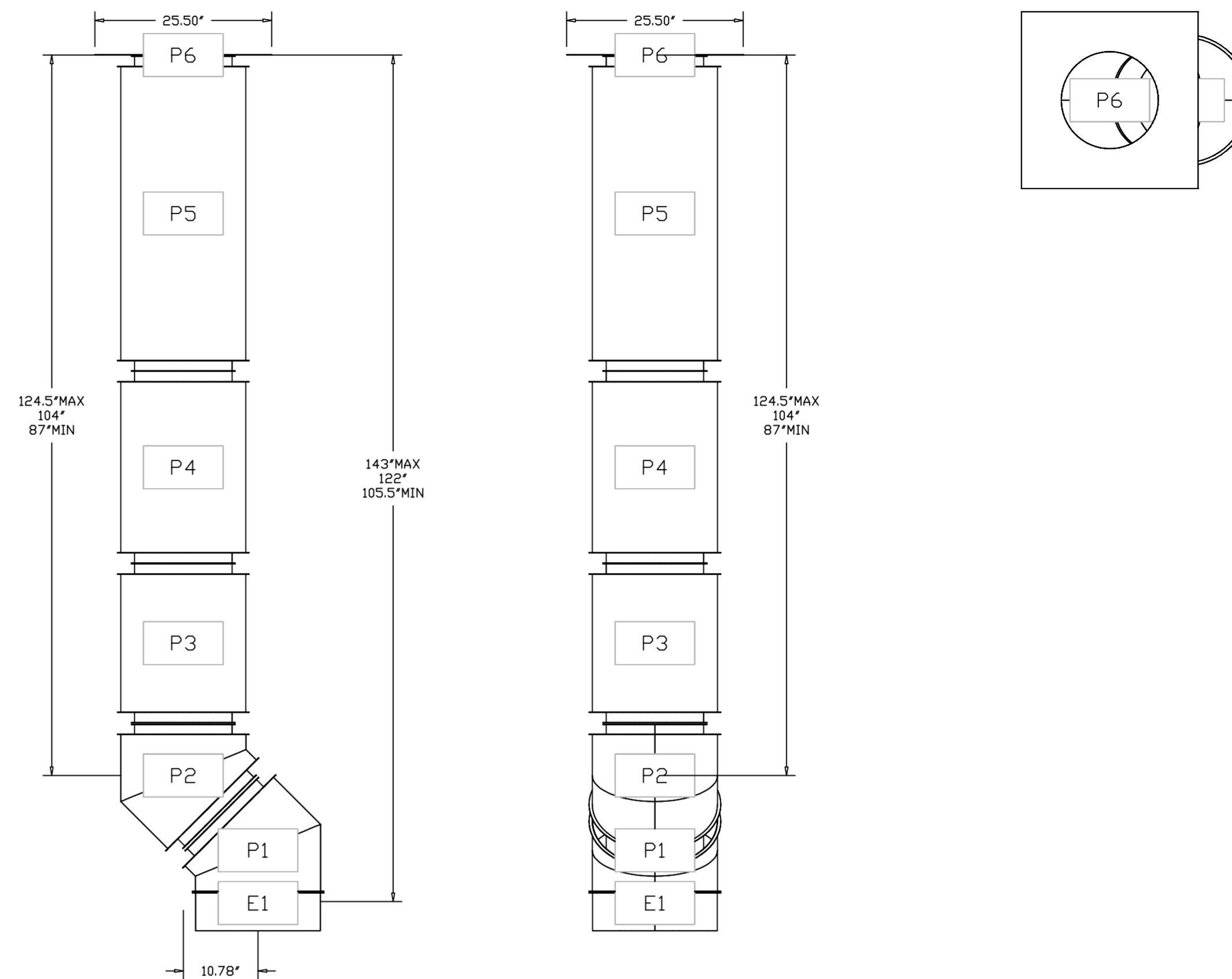
| VERTICAL | | | |
|---------------------|-------------------|-------------------|--------------------|
| TYPE | WALL SUPPORT (FT) | CURB SUPPORT (FT) | FLOOR SUPPORT (FT) |
| 2R & 2R HT (5'-16") | 20' | 24' | 24' |
| 2R (18") | 18' | 24' | 24' |
| 3R & 3Z (5'-24") | 10' | 24' | 24' |
| 3Z (26'-36") | 10' | 20' | 20' |

DO NOT LEAK TEST USING SMOKE BOMBS CONTAINING CHLORINES/CHLORIDES. CONSULT WITH CAPTIVEAIRE FOR PROPER LEAK TESTING METHODS.

DUCTWORK #1 SE VIEW



DUCTWORK #1 FRONT VIEW DUCTWORK #1 SIDE VIEW DUCTWORK #1 TOP VIEW



| REVISIONS | |
|-------------|------|
| DESCRIPTION | DATE |
| | |
| | |
| | |
| | |

www.seconair.com
Wilmington, NC Mechanical
PO Box 7525, Wilmington, NC, 28403 PHONE: EMAIL: rag154@seconair.com

secon·air

Sinters Kitchen Hood
40 Rawls Club Road,
Fuquay-Varina, NC, 27526

DATE: 11/9/2023
DWG.#: 5705900
DRAWN BY: ben.demch
SCALE: 3/4" = 1'-0"
MASTER DRAWING

SHEET NO.
12

SYSTEM DESIGN VERIFICATION (SDV)

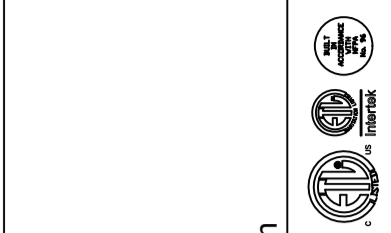
IF ORDERED, CAS SERVICE WILL PERFORM A SYSTEM DESIGN VERIFICATION (SDV) ONCE ALL EQUIPMENT HAS HAD A COMPLETE START UP PER THE OPERATION AND INSTALLATION MANUAL. TYPICALLY, THE SDV WILL BE PERFORMED AFTER ALL INSPECTIONS ARE COMPLETE.

ANY FIELD RELATED DISCREPANCIES THAT ARE DISCOVERED DURING THE SDV WILL BE BROUGHT TO THE ATTENTION OF THE GENERAL CONTRACTOR AND CORRESPONDING TRADES ON SITE. THESE ISSUES WILL BE DOCUMENTED AND FORWARDED TO THE APPROPRIATE SALES OFFICE. IF CAS SERVICE HAS TO RESOLVE A DISCREPANCY THAT IS A FIELD ISSUE, THE GENERAL CONTRACTOR WILL BE NOTIFIED AND BILLED FOR THE WORK. SHOULD A RETURN TRIP BE REQUIRED DUE TO ANY FIELD RELATED DISCREPANCY THAT CANNOT BE RESOLVED DURING THE SDV, THERE WILL BE ADDITIONAL TRIP CHARGES.

DURING THE SDV, CAS SERVICE WILL ADDRESS ANY DISCREPANCY THAT IS THE FAULT OF THE MANUFACTURER. SHOULD A RETURN TRIP BE REQUIRED, THE GENERAL CONTRACTOR AND APPROPRIATE SALES OFFICE WILL BE NOTIFIED. THERE WILL BE NO ADDITIONAL CHARGES FOR MANUFACTURER DISCREPANCIES.

REVISIONS

| DESCRIPTION | DATE: |
|-------------|-------|
| Δ | |
| Δ | |
| Δ | |
| Δ | |



econ·air
www.econair.com
Wilmington, NC Mechanical
PO Box 7525, Wilmington, NC, 28403 PHONE: EMAIL: reg154@econair.com

** Senters Kitchen Hood
40 Rawls Club Road,
Fuquay-Varina, NC, 27526

DATE: 11/9/2023

DWG.#:
5705900

DRAWN BY: ben.demcho

SCALE:
3/4" = 1'-0"

MASTER DRAWING

SHEET NO.
13