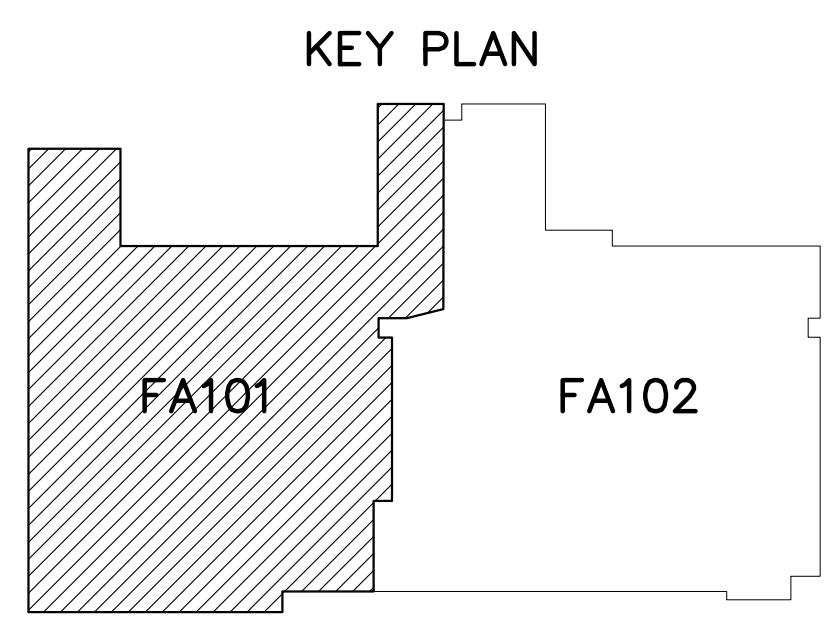
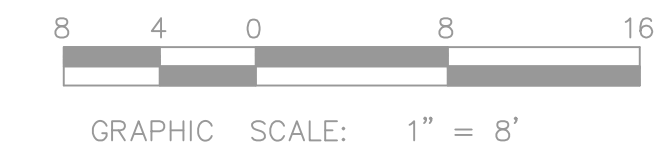


1 WEST WING FIRE ALARM PLAN
 FA-1 SCALE: 1/8"=1'-0"

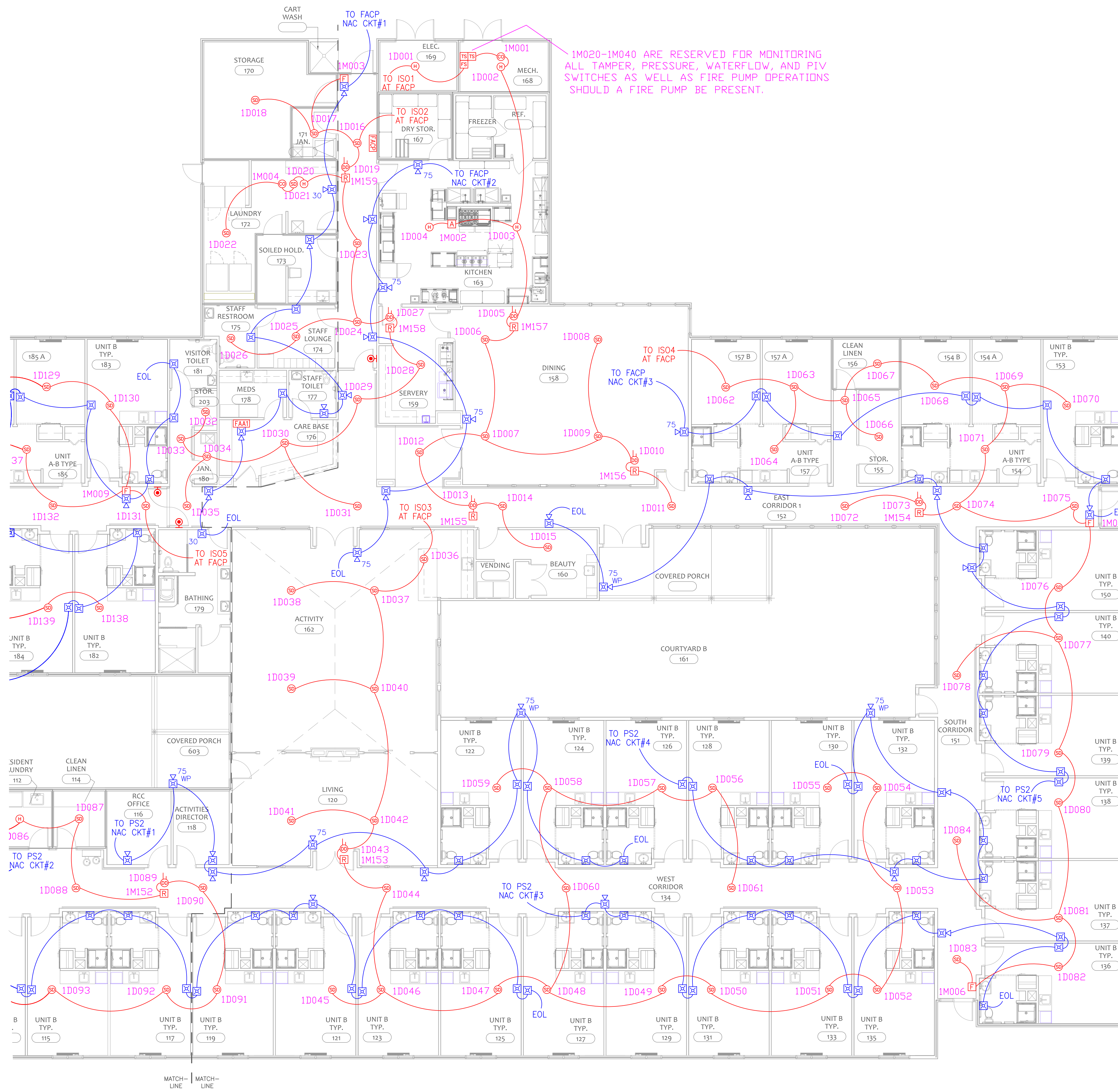


REV. #	BY	DESCRIPTION/DATE

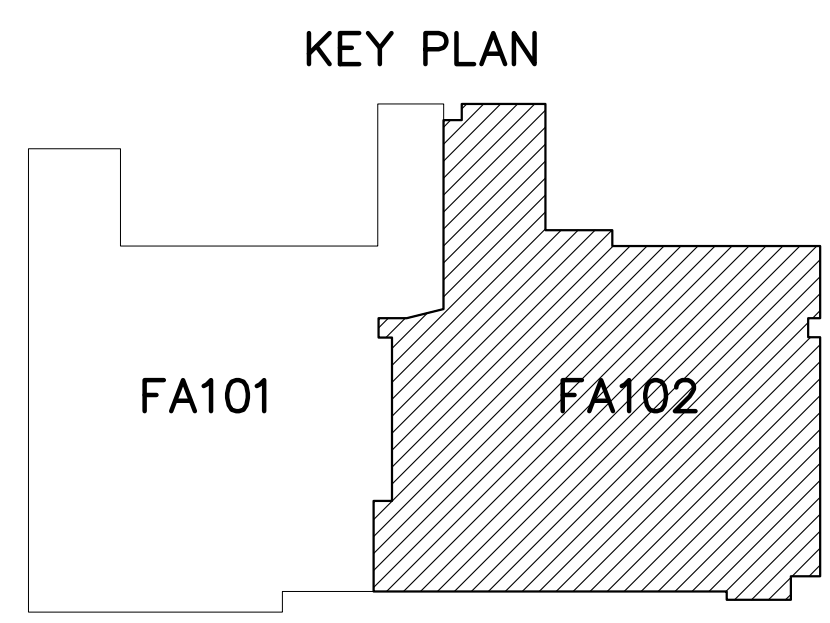
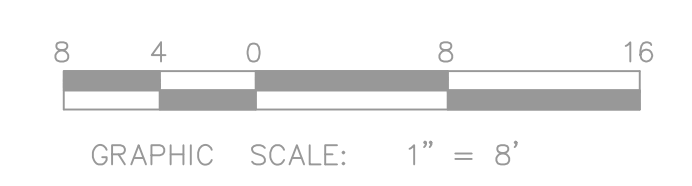
WARDEN ENTERPRISE, INC.
 1033 Warden Drive
 Yadkinville, NC 27055
 Phone: (336) 849-8094

THE SPRINGS OF BALLENTINE
 40 RAWLS CLUB RD.
 FUQUAY VARINA, NORTH CAROLINA
 FIRE ALARM SYSTEM

DRAWN	CR
CHECKED	RW
DATE	2/14/2023
SCALE	1/8"= 1'0"
JOB NO.	-
SHEET	FA-1
1 OF 3	



2 EAST WING FIRE ALARM PLAN
SCALE: 1/8"=1'-0"



REV. #	BY	DESCRIPTION/DATE

WARDEN ENTERPRISE, INC.
1013 Warden Drive
Yadkinville, NC 27055
Phone: (336) 849-8044

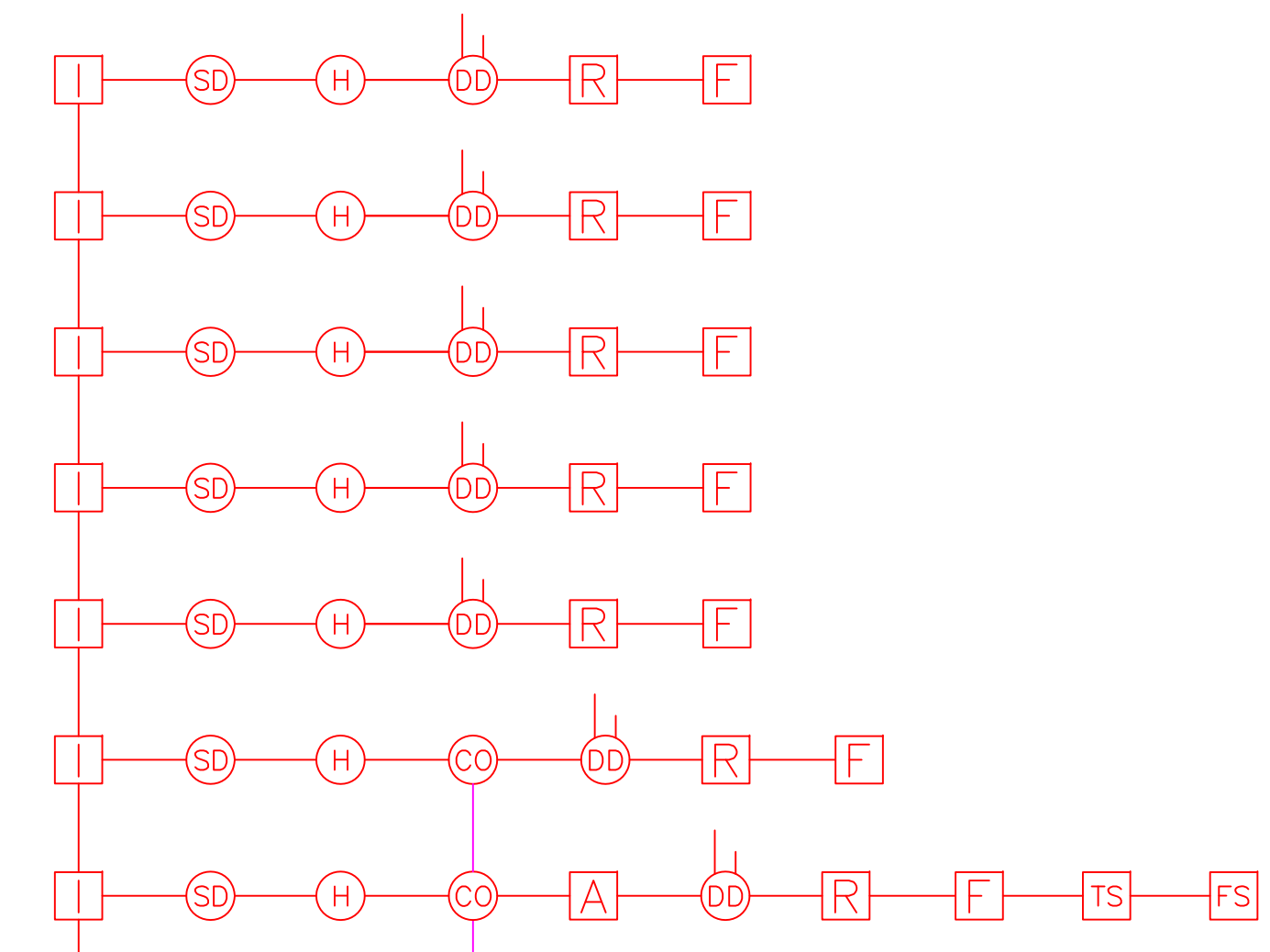
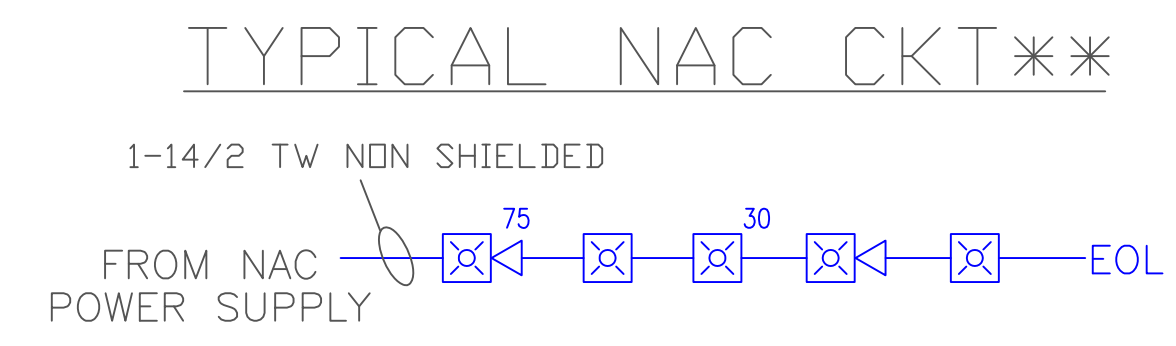
THE SPRINGS OF BALLENTINE
40 RAWLS CLUB RD.
FUQUAY VARINA, NORTH CAROLINA
FIRE ALARM SYSTEM

DRAWN	CR
CHECKED	RW
DATE	2/14/2023
SCALE	1/8"= 1'-0"
JOB NO.	
SHEET	
FA-2	
2 OF 3	

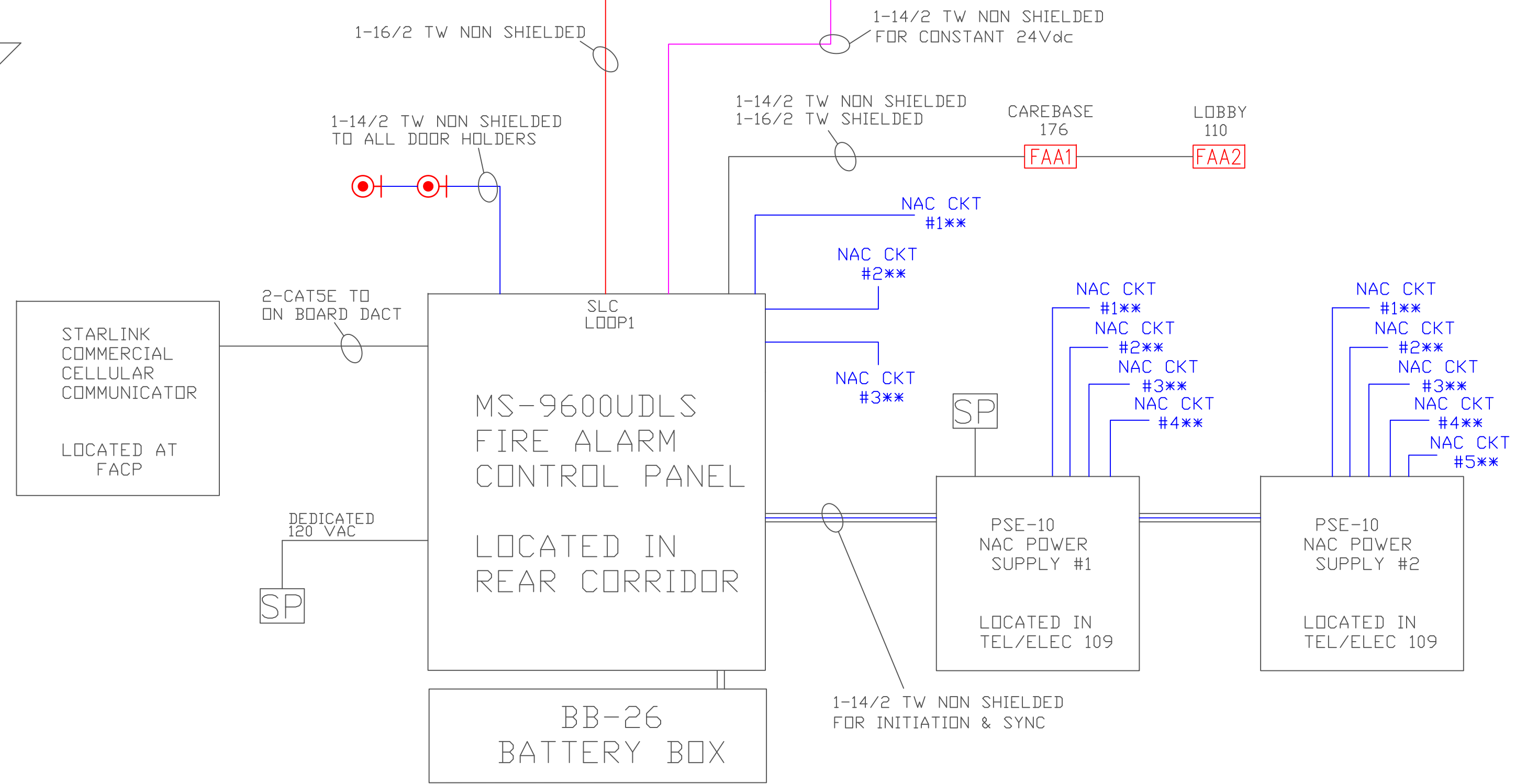
SYMBOL	FIRE ALARM LEGEND
	FIRE ALARM CONTROL PANEL (MS-9600UDLS)
	REMOTE FIRE ALARM ANNUNCIATOR PANEL (ANN-80W)
	NOTIFICATION POWER SUPPLY (PSE-10)
	FIRE ALARM MANUAL PULL STATION (BG-12LX)
	PHOTOELECTRIC SMOKE DETECTOR (SD-365)
	HEAT DETECTOR (H355R)
	DUCT SMOKE DETECTOR (DNR W/ SD-365)
	CARBON MONOXIDE DETECTOR (CO1224T)
	MONITOR MODULE FOR ANSUL SYSTEM (MMF-300)
	RELAY MODULE (CRF300) (HVAC SHUTDOWN)
	FAULT ISOLATION MODULE (I-300)
	MAGNETIC DOOR HOLD OPEN DEVICE (FM998)
	FIRE ALARM CHIME STROBE. "WP" DENOTES A WEATHERPROOF DEVICE. NUMBER INDICATES CANDELA. 15CD UNLESS OTHERWISE NOTED. (GEC3-24WW)
	FIRE ALARM STROBE ONLY. NUMBER INDICATES CANDELA. 15CD UNLESS OTHERWISE NOTED. (GES3-24WW)
	TAMPER SWITCH
	WATERFLOW SWITCH
	NOTIFICATION CIRCUIT END OF LINE RESISTOR
	SURGE PROTECTOR (DTK-120SR)

- GENERAL NOTES:**
- ALL MAGNETIC LOCKING DEVICES AND MAGNETIC DOOR HOLD OPEN DEVICES SHALL RELEASE UPON GENERAL ALARM.
 - ALL AIR HANDLER UNITS SHALL SHUTDOWN UPON GENERAL ALARM.
 - ALL TAMPER, PIV, BACKFLOW, AND HIGH/LOW AIR SWITCHES SHALL ACTUATE A SUPERVISORY SIGNAL WHEN ACTIVATED.
 - SHOULD A FIRE PUMP BE PRESENT, AC POWER LOSS, PUMP RUNNING, AND PHASE REVERSAL SHALL BE MONITORED AND SHALL ACTUATE A SUPERVISORY SIGNAL AT THE FACP.
 - ACTIVATION OF ANY WATERFLOW SWITCH OR THE KITCHEN ANSUL SYSTEM SHALL ACTUATE GENERAL ALARM.
 - ALL STROBES AND CHIME STROBES SHALL BE SYNCHRONIZED DURING OPERATION.
 - ALL STROBES AND CHIME STROBES TO BE SET AT 15 CANDELA UNLESS OTHERWISE NOTED.
 - A ZONE MAP INDICATING BOTH THE LOCATION AND ADDRESS OF ALL ADDRESSABLE DEVICES SHALL BE PLACED ADJACENT TO THE FIRE ALARM PANEL AND ANY OTHER LOCATION WHICH MAY BE SPECIFIED BY THE AHJ.
 - THE SYSTEM SHALL BE FULLY TESTED BEFORE LOCAL INSPECTIONS ARE SCHEDULED AND AN INSPECTION REPORT FROM THE MONITORING ENTITY WILL BE PRESENTED TO THE FIRE MARSHAL BEFORE OR DURING LOCAL INSPECTIONS ACCORDING TO THE AHJ'S DIRECTION.

WIRING LEGEND	
COLOR	DESCRIPTION
	14/2 TWISTED NON SHIELDED FPLR (NAC CIRCUIT, DOOR HOLDERS)
	16/2 TWISTED NON SHIELDED FPLR (SLC CIRCUIT)
	14/2 TWISTED NON SHIELDED FPLR (CONSTANT 24V)
	16/2 TWISTED SHIELDED FPLR (ANNUNCIATOR CIRCUIT)
	14/2 TWISTED SHIELDED FPLR (ANNUNCIATOR POWER)



	FIRE ALARM SYSTEM MATRIX													
	A	B	C	D	E	F	G	H	I	J	K	L	M	
1	MANUAL STATION	●												
2	SMOKE DETECTOR - COMMON AREA	●												
3	SPRINKLER SYSTEM WATERFLOW	●												
4	RANGE HOOD CHEMICAL RELEASE	●												
5	FIRE ALARM SYSTEM A/C POWER FAILURE		●											
6	FIRE ALARM SYSTEM LOW BATTERY		●											
7	OPEN CIRCUIT		●											
8	GROUND FAULT		●											
9	NOTIFICATION APPLIANCE SHORT CIRCUIT		●											
10	SPRINKLER SYSTEM VALVE TAMPER			●										●
11	SMOKE DETECTOR - RESIDENT ROOM	●			●	●	●	●	●	●				
12	HEAT DETECTOR	●			●	●	●	●	●	●				
13	DUCT SMOKE DETECTOR			●	●								●	
14														



3
RISER

FIRE ALARM PLAN- SYSTEM DIAGRAM
SCALE: NTS

REV. #	BY	DESCRIPTION/DATE

WARDEN ENTERPRISE, INC.

1013 Warden Drive
Yadkinville, NC 27055
Phone: (336) 849-8044

THE SPRINGS OF BALLENTINE

40 RAWLS CLUB RD.
FUQUAY VARINA, NORTH CAROLINA
FIRE ALARM SYSTEM

DRAWN	CR
CHECKED	RW
DATE	2/14/2023
SCALE	NTS
JOB NO.	-
SHEET	-
RISER	
3 OF 3	