

FOR QUESTIONS, CALL THE
Eastern North Carolina
REGION 36
PHONE: (919) 825-3566
EMAIL: reg36@econair.com

PATENT NUMBERS

AC-PSP (UNITED STATES) - US PATENT 7963830 B2.
AC-PSP WALL (CANADA) - CA PATENT 2820509.
AC-PSP ISLAND (CANADA) - CA PATENT 2520330.

HOOD INFORMATION - JOB#5832579

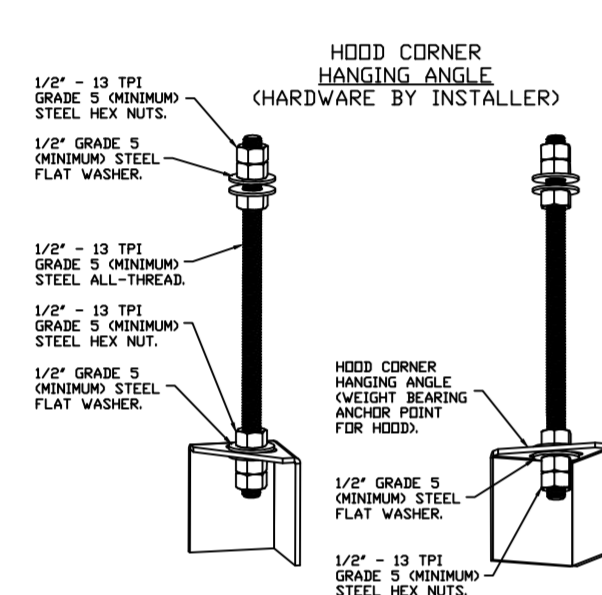
HOOD NO	TAG	MODEL	MANUFACTURER	LENGTH	MAX COOKING TEMP	TYPE	APPLIANCE DUTY	DESIGN CFM/FT	TOTAL EXH CFM	EXHAUST PLENUM RISER(S)					TOTAL SUPPLY CFM	HOOD CONSTRUCTION	HOOD CONFIG			
										WIDTH	LENG	HEIGHT	DIA	CFM			VEL	SP	END TO END	RDW
1		5424 EX-2-PSP-F	ECON-AIR	10' 0"	600 DEG	I	HEAVY	200	2000	10'	19'	4'		2000	1516	-0.414'	1600	430 SS WHERE EXPOSED	ALONE	ALONE
2		5424 EX-2-PSP-F	ECON-AIR	10' 0"	600 DEG	I	HEAVY	200	2000	10'	19'	4'		2000	1516	-0.414'	1600	430 SS WHERE EXPOSED	ALONE	ALONE

HOOD INFORMATION

HOOD NO	TAG	FILTER(S)					LIGHT(S)					UTILITY CABINET(S)				FIRE SYSTEM PIPING	HOOD HANGING WEIGHT	
		TYPE	QTY	HEIGHT	LENGTH	EFFICIENCY @ 7 MICRONS	QTY	TYPE	WIRE GUARD	LOCATION	SIZE	TYPE	SIZE	MODEL #	SWITCHES QUANTITY			
1		SS BAFFLE WITH HANDLES	7	16"	16"	30%	7	L55 SERIES E26	NO								NO	534 LBS
2		SS BAFFLE WITH HANDLES	7	16"	16"	30%	7	L55 SERIES E26	NO								NO	534 LBS

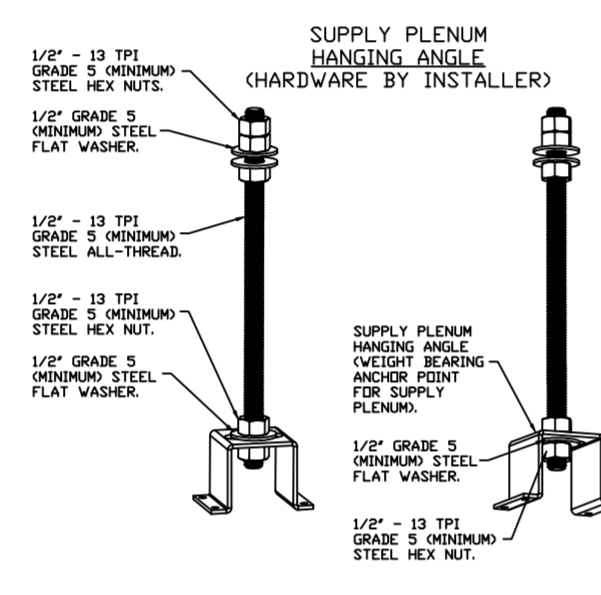
PERFORATED SUPPLY PLENUM(S)

HOOD NO	TAG	POS	LENGTH	WIDTH	HEIGHT	TYPE	RISER(S)				
							WIDTH	LENG	DIA	CFM	SP
1		Front	120"	14"	6"	MUA	12"	28"		800	0.206'
						MUA	12"	28"		800	0.206'
2		Front	120"	14"	6"	MUA	12"	28"		800	0.206'
						MUA	12"	28"		800	0.206'



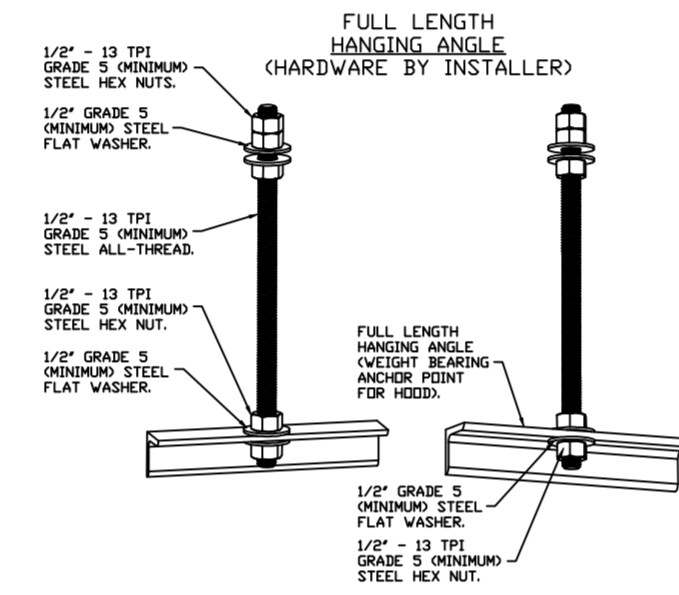
ASSEMBLY INSTRUCTIONS

HANGING ANGLE MUST BE SUPPORTED WITH 1/2" - 13 TPI GRADE 5 (MINIMUM) ALL-THREAD. SANDWICH HANGING ANGLES AND CEILING ANCHOR POINTS WITH 1/2" GRADE 5 (MINIMUM) STEEL FLAT WASHERS AND 1/2" - 13 TPI GRADE 5 (MINIMUM) HEX NUTS AS SHOWN. MUST USE DOUBLED HEX NUT CONFIGURATION ABOVE CEILING ANCHORS AND ABOVE CEILING ANCHORS. MAINTAIN 1/4" OF EXPOSED THREADS BENEATH BOTTOM HEX NUT. TORQUE ALL HEX NUTS TO 57 FT-LBS.



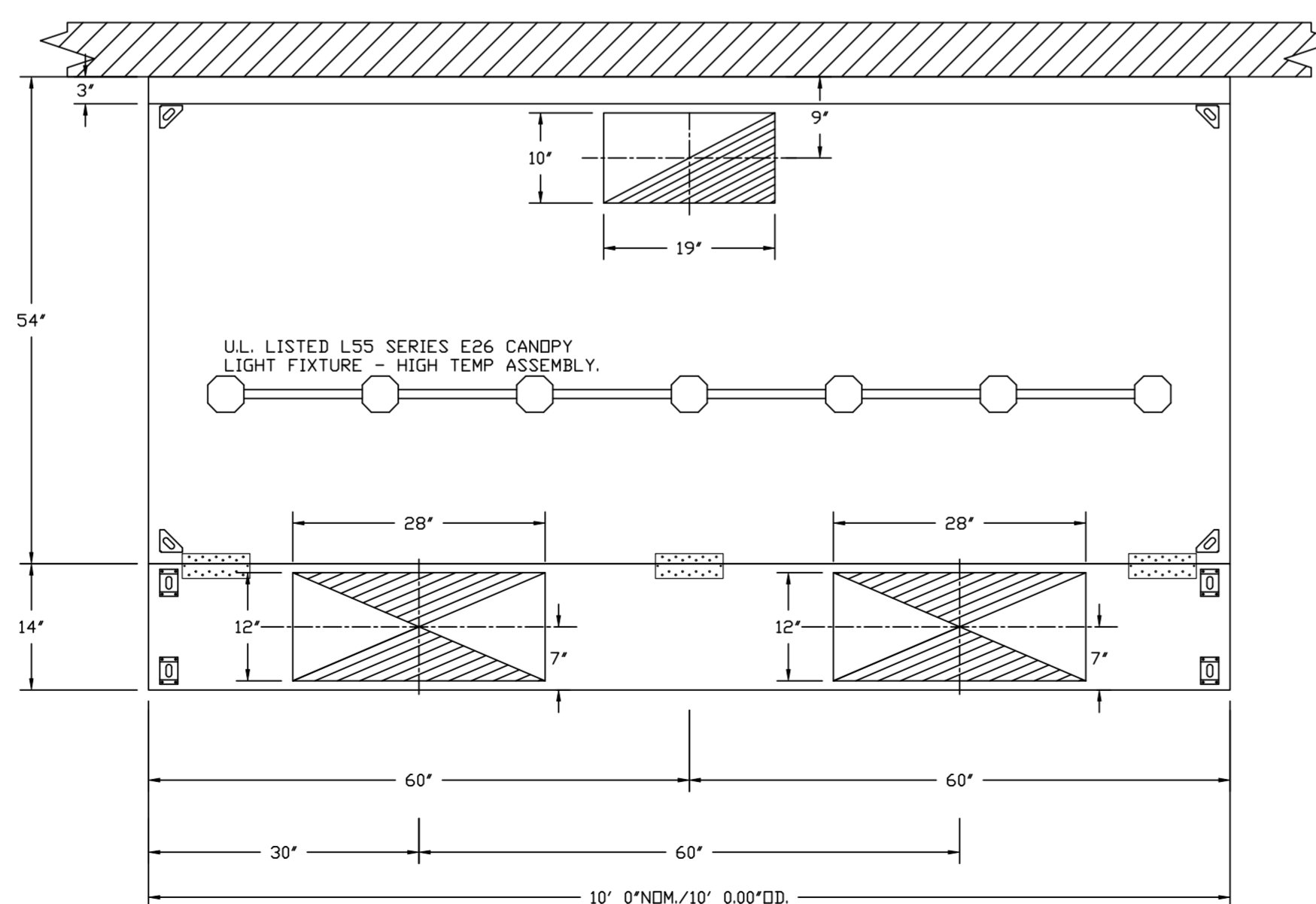
ASSEMBLY INSTRUCTIONS

HANGING ANGLE MUST BE SUPPORTED WITH 1/2" - 13 TPI GRADE 5 (MINIMUM) ALL-THREAD. SANDWICH HANGING ANGLES AND CEILING ANCHOR POINTS WITH 1/2" GRADE 5 (MINIMUM) STEEL FLAT WASHERS AND 1/2" - 13 TPI GRADE 5 (MINIMUM) HEX NUTS AS SHOWN. MUST USE DOUBLED HEX NUT CONFIGURATION ABOVE CEILING ANCHORS. SINGLE HEX NUT BENEATH HANGING ANGLE IS ACCEPTABLE FOR PSP HANGING ANGLES. MAINTAIN 1/4" OF EXPOSED THREADS BENEATH BOTTOM HEX NUT. TORQUE ALL HEX NUTS TO 57 FT-LBS.

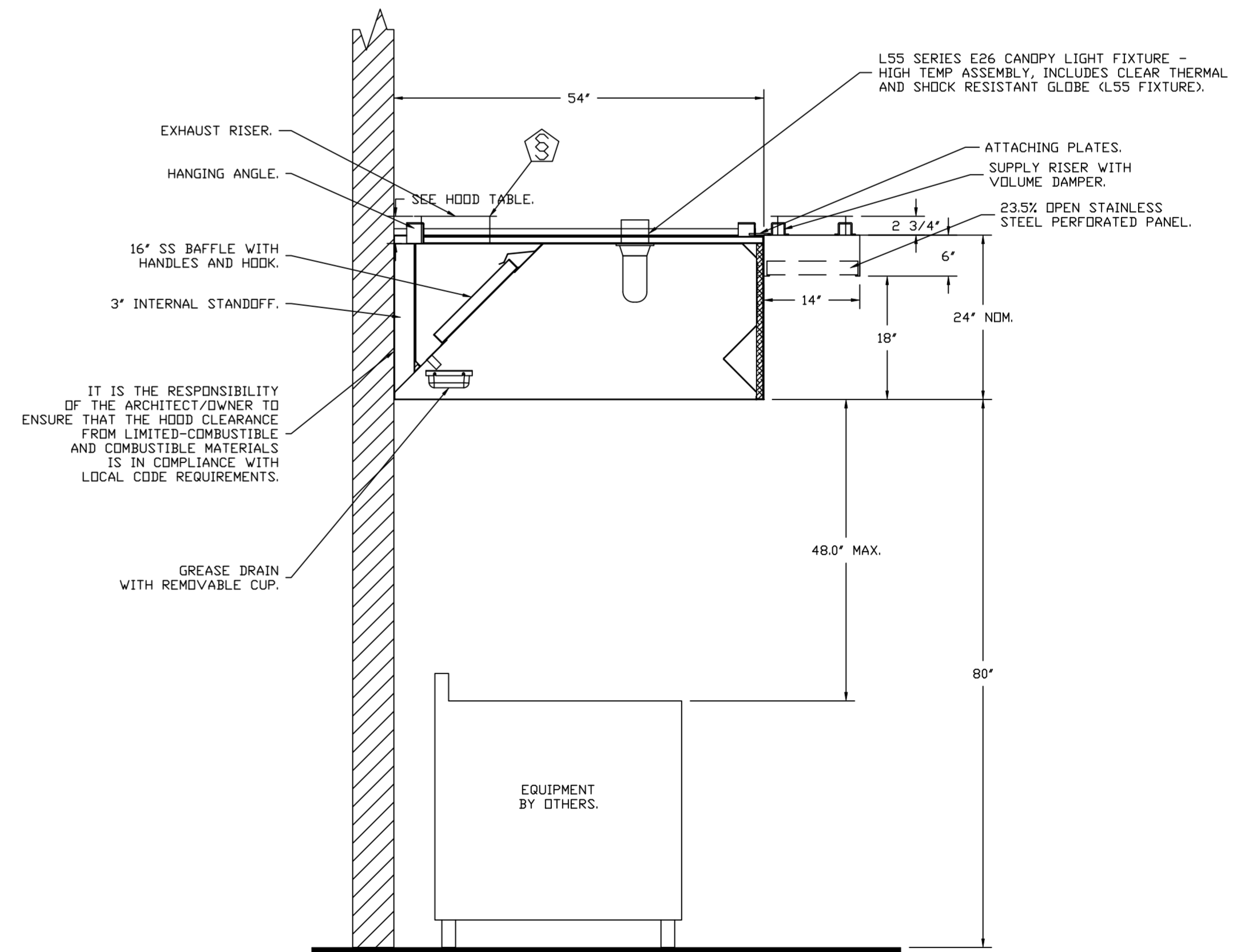


ASSEMBLY INSTRUCTIONS

HANGING ANGLE MUST BE SUPPORTED WITH 1/2" - 13 TPI GRADE 5 (MINIMUM) ALL-THREAD. SANDWICH HANGING ANGLES AND CEILING ANCHOR POINTS WITH 1/2" GRADE 5 (MINIMUM) STEEL FLAT WASHERS AND 1/2" - 13 TPI GRADE 5 (MINIMUM) HEX NUTS AS SHOWN. MUST USE DOUBLED HEX NUT CONFIGURATION ABOVE CEILING ANCHORS. SINGLE HEX NUT BENEATH HANGING ANGLE IS ACCEPTABLE FOR FULL LENGTH HANGING ANGLES. MAINTAIN 1/4" OF EXPOSED THREADS BENEATH BOTTOM HEX NUT. TORQUE ALL HEX NUTS TO 57 FT-LBS.



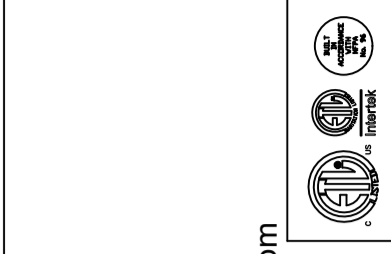
PLAN VIEW - HOOD #1, #2
10' 0.00" LONG 5424EX-2-PSP-F



SECTION VIEW - MODEL 5424EX-2-PSP-F
HOOD - #1, #2

REVISIONS

NO.	DESCRIPTION	DATE



Econ-Air
www.econair.com
Eastern North Carolina
4641 Paragon Park Rd., Raleigh, NC, 27616 PHONE: (919) 825-3566 FAX: (919) 227-5917 EMAIL: reg36@econair.com

KOTO HIBACHI & SUSHI
1539 JIM JOHNSON ROAD,
FAYETTEVILLE, NC, 28312

DATE: 2/20/2023
DWG.#: 5832579
DRAWN BY: reg36
SCALE: 3/4" = 1'-0"
MASTER DRAWING

SHEET NO. 1

EXHAUST FAN INFORMATION - JOB#5832579

FAN UNIT NO	TAG	QTY	FAN UNIT MODEL #	MANUFACTURER	CFM	ESP	RPM	MOTOR ENCL	HP	BHP	PHASE	VOLT	FLA	DISCHARGE VELOCITY	WEIGHT (LBS)	SONES
1	KEF-1	1	EADU85H	ECDN-AIR	2000	1.000	1435	TEAD-ECM	1.000	0.5330	1	230	6.5	633 FPM	94	13.9
2	KEF-2	1	EADU85H	ECDN-AIR	2000	1.000	1435	TEAD-ECM	1.000	0.5330	1	230	6.5	633 FPM	94	13.9

MUA FAN INFORMATION - JOB#5832579

FAN UNIT NO	TAG	QTY	FAN UNIT MODEL #	BLOWER	HOUSING	MIN CFM	DESIGN CFM	ESP	RPM	MOTOR ENCL	HP	BHP	PHASE	VOLT	FLA	MCA	MOCP	WEIGHT (LBS)	SONES
3	MUA	1	EA-A2-20D	20MF-2-MDD	A2	1500	3200	0.500	1154	DDP, PREMIUM	1.500	0.8710	3	208	6.6	8.3A	15A	411	11.9

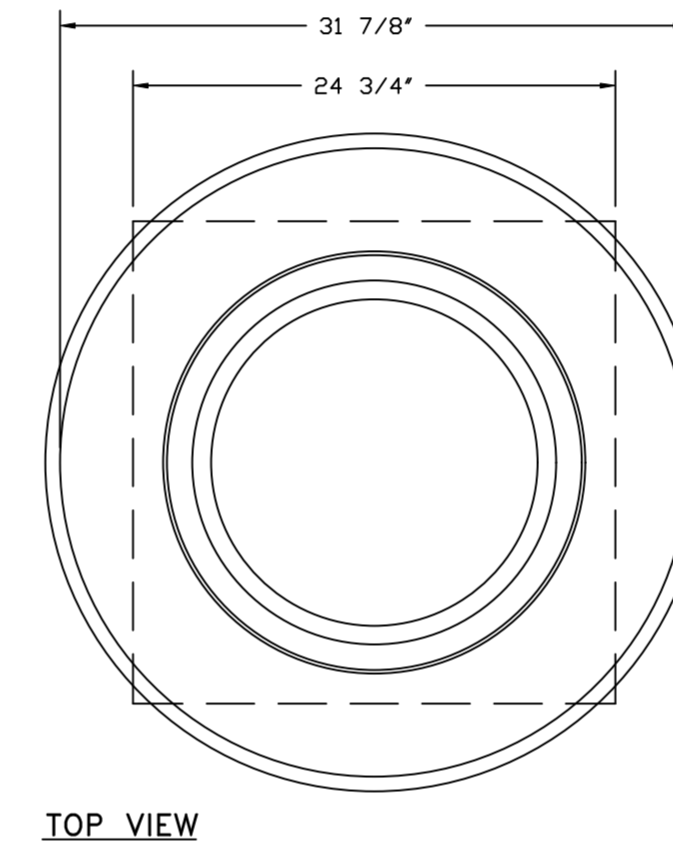
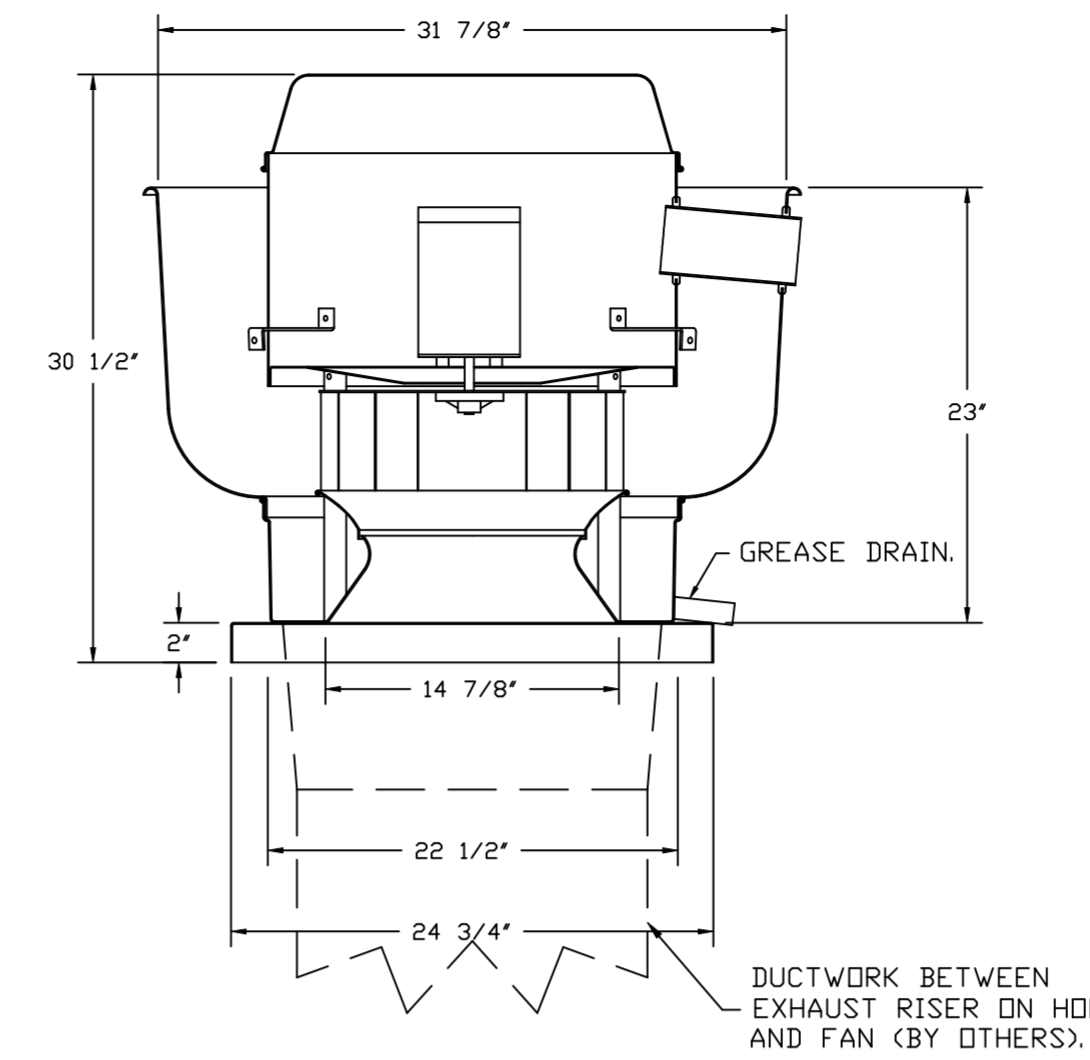
FAN OPTIONS

FAN UNIT NO	TAG	QTY	DESCRIPTION
1	KEF-1	1	GREASE BDX
		1	ECM WIRING PACKAGE - EXHAUST - MANUAL OR 0-10VDC REFERENCE SPEED CONTROL -MSC- (TELCD), CCW ROTATION
		1	EXHAUST FAN HEAT BAFFLE
		1	2 YEAR PARTS WARRANTY
2	KEF-2	1	GREASE BDX
		1	ECM WIRING PACKAGE - EXHAUST - MANUAL OR 0-10VDC REFERENCE SPEED CONTROL -MSC- (TELCD), CCW ROTATION
		1	EXHAUST FAN HEAT BAFFLE
		1	2 YEAR PARTS WARRANTY
3	MUA	1	SIZE 2 UNTEMPERED COMMERCIAL DOWN DISCHARGE FOR DIRECT DRIVE AHUS
		1	VAV PACKAGE W/ MANUAL CONTROL FOR NON TEMPERED UNITS (VFD INCLUDED)
		1	2 YEAR PARTS WARRANTY
		1	2 YEAR PARTS WARRANTY

FAN ACCESSORIES

FAN UNIT NO	TAG	EXHAUST				SUPPLY			
		GREASE CUP	GRAVITY DAMPER	WALL MOUNT	SIDE DISCHARGE	GRAVITY DAMPER	MOTORIZED DAMPER	WALL MOUNT	
1	KEF-1	YES							
2	KEF-2	YES							
3	MUA								

FANS #1 (KEF-1), #2 (KEF-2) - EADURSH EXHAUST FAN



FEATURES:

- DIRECT DRIVE CONSTRUCTION (NO BELTS/PULLEYS).
- ROOF MOUNTED FANS.
- RESTAURANT MODEL.
- UL705 AND UL762 AND ULC-S645
- VARIABLE SPEED CONTROL.
- INTERNAL WIRING.
- THERMAL OVERLOAD PROTECTION (SINGLE PHASE).
- HIGH HEAT OPERATION 300°F (149°C).
- GREASE CLASSIFICATION TESTING.
- NEMA 3R SAFETY DISCONNECT SWITCH.

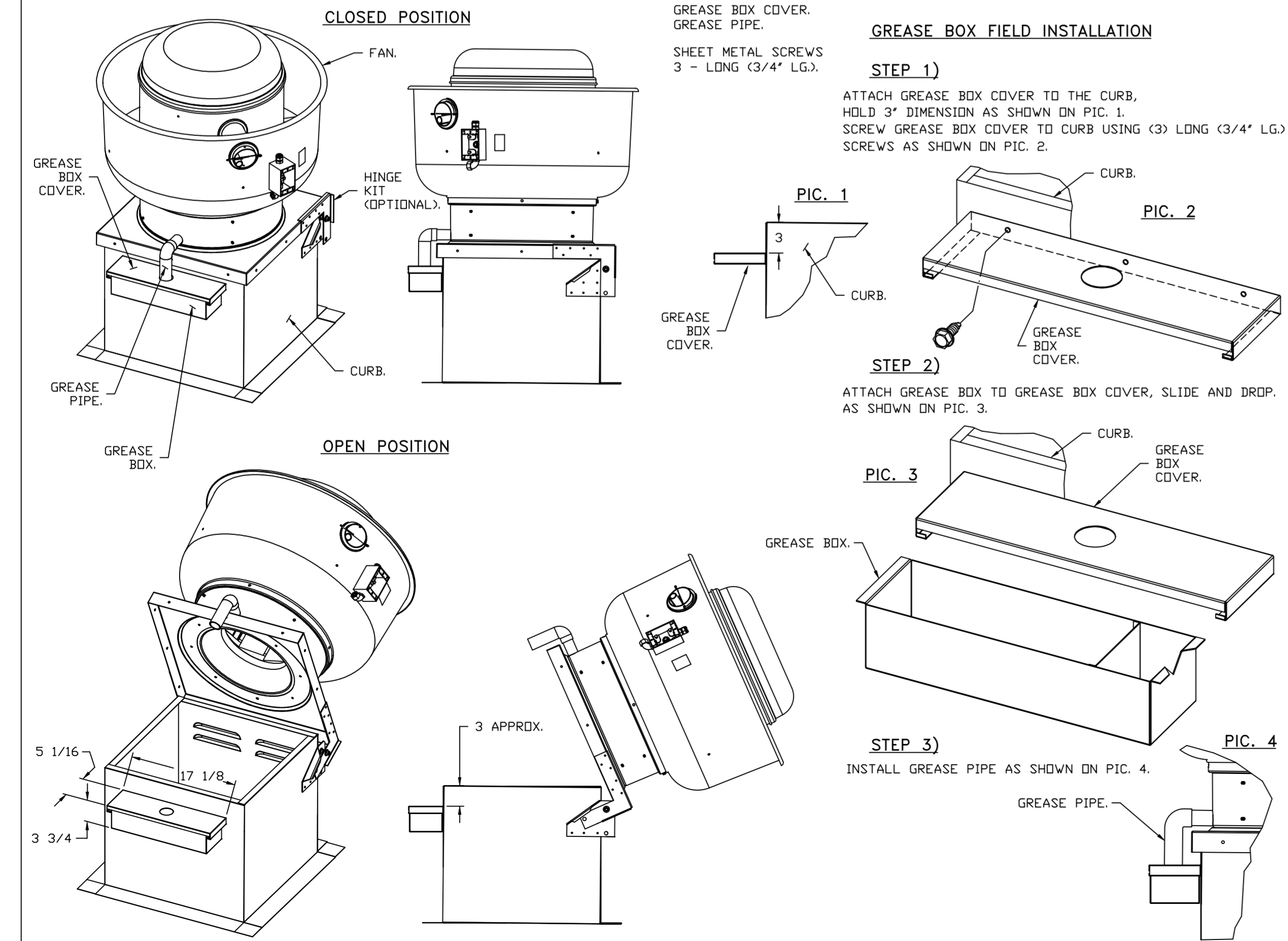
NORMAL TEMPERATURE TEST
EXHAUST FAN MUST OPERATE CONTINUOUSLY WHILE EXHAUSTING AIR AT 300°F (149°C) UNTIL ALL FAN PARTS HAVE REACHED THERMAL EQUILIBRIUM, AND WITHOUT ANY DETERIORATING EFFECTS TO THE FAN WHICH WOULD CAUSE UNSAFE OPERATION.

ABNORMAL FLARE-UP TEST
EXHAUST FAN MUST OPERATE CONTINUOUSLY WHILE EXHAUSTING BURNING GREASE VAPORS AT 600°F (316°C) FOR A PERIOD OF 15 MINUTES WITHOUT THE FAN BECOMING DAMAGED TO ANY EXTENT THAT COULD CAUSE AN UNSAFE CONDITION.

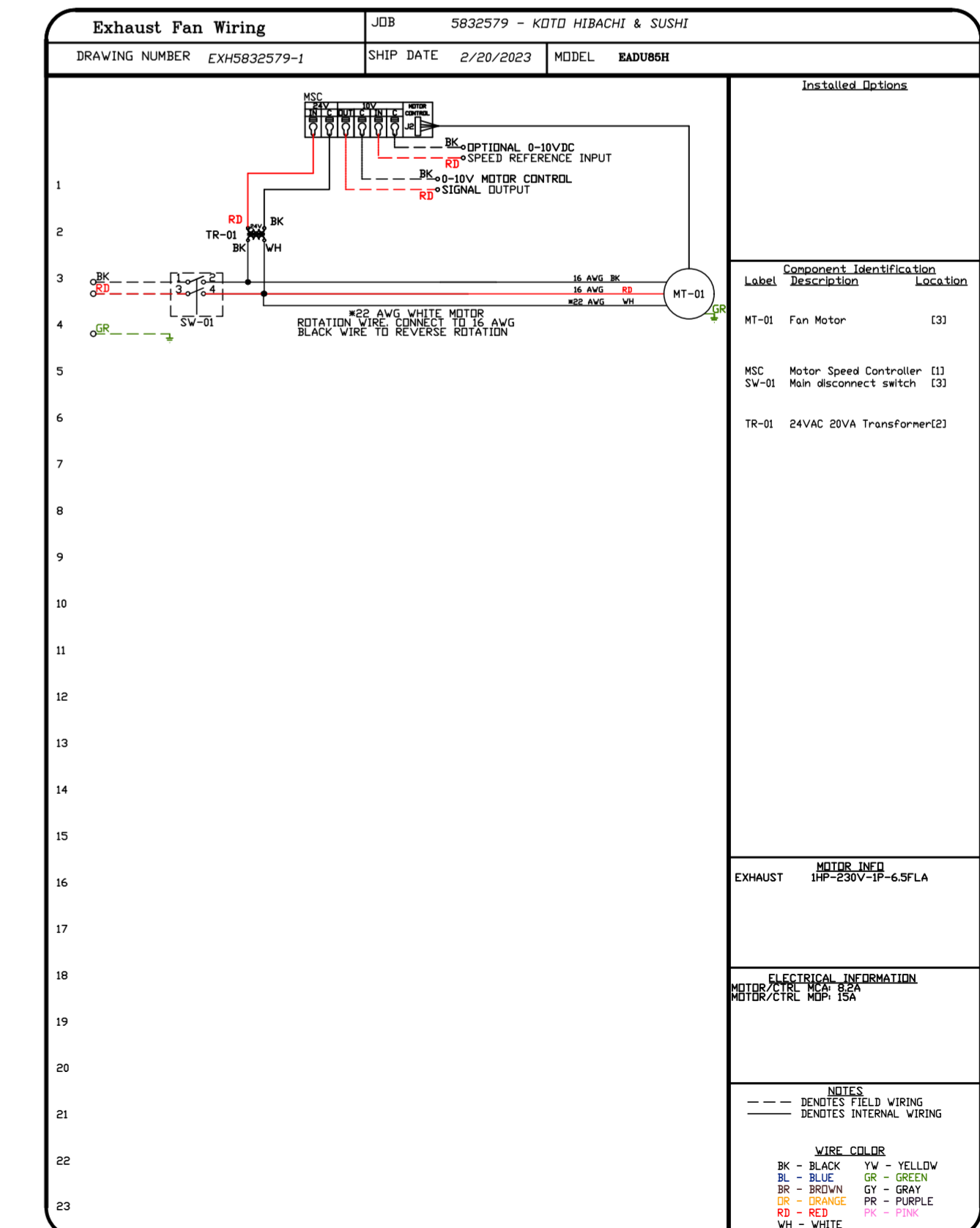
OPTIONS

- GREASE BDX.
- ECM WIRING PACKAGE - EXHAUST - MANUAL OR 0-10VDC REFERENCE SPEED CONTROL -MSC- (TELCD), CCW ROTATION.
- EXHAUST FAN HEAT BAFFLE.
- 2 YEAR PARTS WARRANTY.

GREASE BOX INSTALLATION



*NOTE: UL 705 INSTALL.



REVISIONS

DESCRIPTION	DATE

econ·air
www.econair.com

Eastern North Carolina
4641 Paragon Park Rd., Raleigh, NC, 27616 PHONE: (919) 825-3566 FAX: (919) 227-5917 EMAIL: reg36@econair.com

KOTO HIBACHI & SUSHI
1539 JIM JOHNSON ROAD,
FAYETTEVILLE, NC, 28312

DATE: 2/20/2023

DWG.#: 5832579

DRAWN BY: reg36

SCALE: 3/4" = 1'-0"

MASTER DRAWING

SHEET NO.
2

