

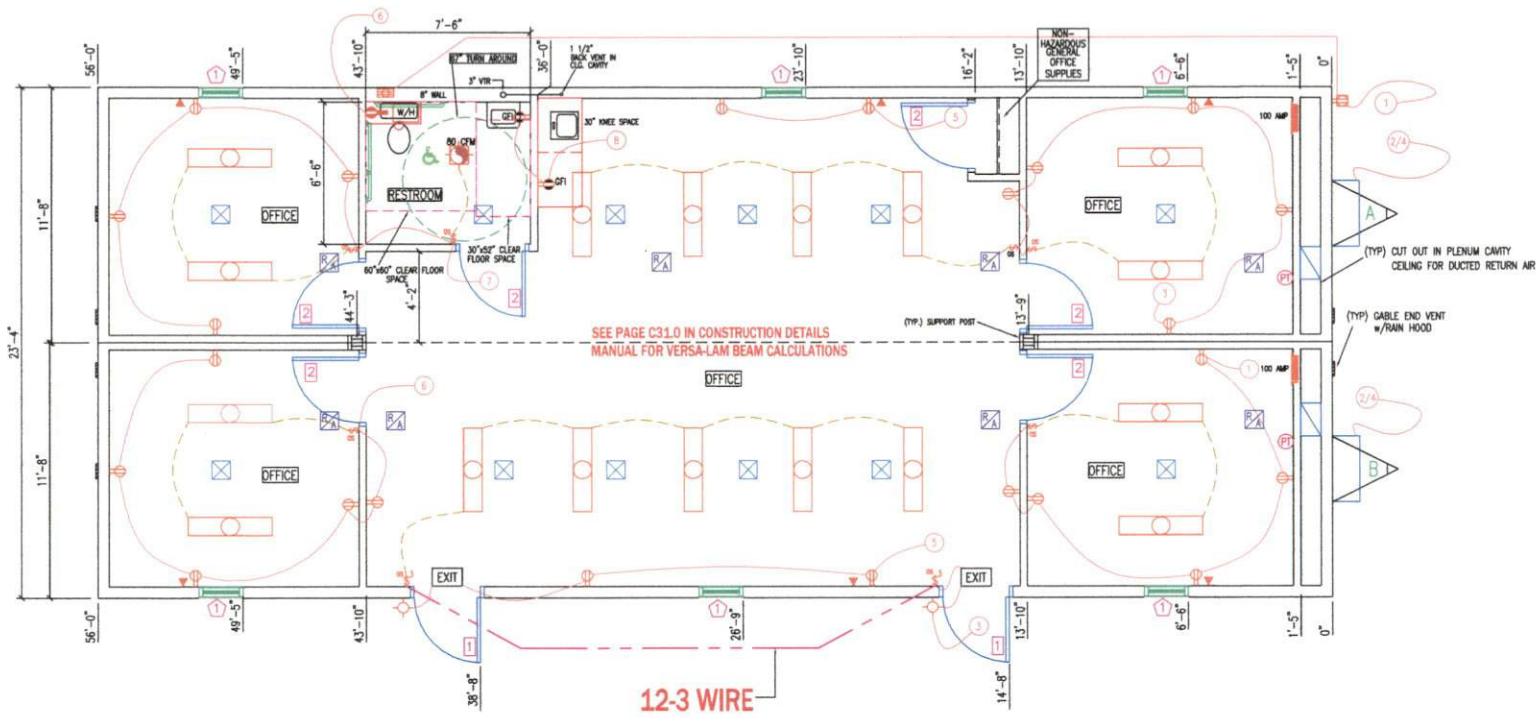




FRAME & FLOOR	WALLS, WINDOWS, DOORS	ELECTRICAL	PLUMBING	ROOF	EXTERIOR	A/C & HEAT
<b>FRAME:</b> 11'-8" x 56'-0" <b>AXLES:</b> (2x2) EACH BEAM: 10" <b>HITCH:</b> STD DET XXX <b>JOISTS:</b> 2"x8" FLOOR JOISTS @ 16" O.C. <b>INSULATION:</b> R-30 <b>DECKING:</b> 23/32" TONGUE & GROOVE <b>NO CUTTRACKS</b> <b>COVERING:</b> 1/8" BLOCK TILE (3/16" JOINTS) <b>MATLINE GETS 2 1/2" TILE BAR</b>	<b>WALLS:</b> 2"x4" STUDS w/ DOUBLE TOP PLATES <b>INT. WALLS:</b> 2"x4" STUDS w/ SOL. TOP PLATES <b>PLYWOOD SUPPORT:</b> PORCH LIGHTS, T.P. HOLDERS, CROWN MOULD., LAY & CARNEY <b>COVERING:</b> 1/2" VINYL COVERED GYPSUM THRU OUT "HAMPTON GREY" <b>EXT. INSUL:</b> R-21 <b>INT. INSUL:</b> R41 IN R.R. <b>EXT. DOORS:</b> (2) 36"x80" H.S. ALUM w/ 4"x4" V.B./ LEVER HNDL/ DRIP CAP <b>INT. DOORS:</b> (4) 36"x80" 6-PANEL w/ LEVER HNDL <b>WINDOWS:</b> (6) 24"x60" V.S. WHITE VINYL INSUL 1/1 LOW E INSULATED w/ MINIBLINDS	<b>ENT. PANEL:</b> (2) 100 AMP <b>LIGHTS:</b> (17) 4" 2-TUBE LED w/ LENS <b>(8) OCCUPANCY SENSOR SWITCHES</b> <b>(1) SETS OF 3-WAY SWITCHES w/ 12-3 WIRE</b> <b>(2) EXTERIOR W.P. LED PORCH LIGHT w/ PHOTO CELL</b> <b>(2) LIGHTED EXIT SIGN w/ BATTERY BACKUP</b> <b>(1) COMBO VENT FAN/LIGHT</b> <b>(2) 110V GFI RECEPT @ 4" AFF</b> <b>(1) 110V EXTERIOR W.P. G.F.I. RECEPT (WHILE IN LINE)</b> <b>(1) 110V DEDICATED W/H RECEPT @ 8" AFF.</b> <b>(1) 110V EXT. W.P. RECEPT UNDER UNIT FOR HEAT TAPE</b> <b>(8) PHONE JACK J-BOX (NO COVER) w/ CONDUIT THRU FLOOR</b>	<b>TYPE:</b> CPVC SUPPLY LINES <b>PVC WASTE LINES</b> <b>WALL HUNG L.V. (1) w/ PLYWOOD SUPPORT</b> <b>VANITY:</b> N/A <b>MIRROR:</b> (1) 40" AFF TO BOT. <b>COMMODO:</b> (1) HANICAP USE OFFSET FLANGE <b>SPECIAL:</b> (1) TOILET PAPER HOLDER <b>WATER HEATER:</b> (1) 4 GALLON IN O.K. CAB. IN R.R. <b>GRAB BARS:</b> (1) 36" (1) 42" @ 33" AFF <b>(1) 18" VERTICAL</b> <b>3 LF FORMICA COUNTERTOP @ 34" J.A.F. w/ 15"x15" S.S. BAR SINK &amp; CROSSDRESS FRACKET</b> <b>30" BASE CABINET @ 30" KNEESPACE BELOW</b> <b>ALMOND TOP w/</b> <b>FORMICA COLOR, WOODGRAIN FRONT</b>	<b>TRUSS:</b> #F0138230 @ 24" O.C. <b>TRANSVERSE:</b> (24-31-24) 136 3/4" *** <b>RIDGE BEAM:</b> 1 3/4" VERSA-LAM BEAM <b>24" TALL EA. BEAM 80' LONG</b> <b>CEILING:</b> 1/2" SEASPRAY <b>FIBERGLASS DUCT</b> <b>INSULATION:</b> R-49 <b>DECKING:</b> 7/16" FR DECK <b>ROOF DECK TO BE FASTENED TO TRUSSES w/ 1.31 DIA x 1 1/2" NAILS @ 8" O.C. @ 11" O.C. FROM END @ 8" O.C. &amp; 12" O.C. FOR MIDDLE</b> <b>(1) COMBO VENT FAN/LIGHT</b> <b>ATTIC VENTILATION:</b> SEE PRINT	<b>SHEATHING:</b> <b>FULL WRAP 5/8" O.S.B.</b> <b>FULL WRAP HOUSE WRAP</b> <b>BOT. TRIM:</b> 26 GA. STEEL <b>IVORY</b> <b>SIDING:</b> 26 GA. H. RIB STEEL <b>IVORY</b> <b>TOP TRIM:</b> 26 GA. STEEL <b>MANSARD IVORY</b> <b>LINE WINDOWS, DOORS &amp; HVAC OPENINGS w/ VYORR TAPE</b> <b>DECALS:</b> N/A	<b>Single Package Vertical AC Unit</b> <b>HVAC:</b> (2) R03AB-ASD <b>80 AMP #0 WIRE</b> <b>10 KW</b> <b>DUCT: FIBERGLASS DUCT</b> <b>SUPPLY (R-LS) RETURN (STD)</b> <b>RETURN AIR:</b> SEE PRINT <b>1,180 CFM @ 3 INC ESP</b> <b>THERMOSTAT:</b> #PH411001007 <b>PROGRAMMABLE (PT)</b> <b>RETURN AIR GRINGS</b> <b>26 1/2" x 14 1/2"</b>

<b>ELECTRICAL DISTRIBUTION PANEL</b> <b>110V EXT. W.P. GFI RECEPT (WHILE IN USE)</b> <b>DUPLEX RECEPTACLE 120V</b> <b>QUAD RECEPTACLE 120V</b> <b>SGL RECEPTACLE 220V</b> <b>110V EXT. W.P. HEAT TAPE RECEPT</b> <b>J-BOX w/ CONDUIT STUB FOR PHONE/DATA</b> <b>SWITCH, 3-WAY, OCCUPANCY SENSOR, DIMMER</b> <b>LED FIXTURE w/ 2 T8 TUBES</b> <b>(44W INPUT WATTAGE)</b> <b>LED FIXTURE w/ 1-13W (13W INPUT WATTAGE)</b> <b>EXHAUST FAN</b> <b>COMBO EXHAUST FAN/LIGHT</b> <b>80 CFM EXHAUST FAN/13W LIGHT (14W INPUT WATTAGE)</b> <b>PROGRAMMABLE THERMOSTAT</b> <b>EXIT SIGN W/BATT. BACK-UP</b> <b>DIRECTIONAL EXIT SIGN W/BATT. BACK-UP</b> <b>COMBO EXIT SIGN/DUAL HEAD EMERG. LIGHT W/BATT. BACK-UP</b> <b>DUAL HEAD EMERG. LIGHT W/BATT. BACK-UP</b>
--

NOTE: ALL INTERIOR WALL AND CEILING FINISHES SHALL BE CLASS A OR BETTER IN CORRIDORS, AND CLASS B OR BETTER IN ROOMS AND ENCLOSED SPACES; CARPET SHALL BE CLASS II OR BETTER.



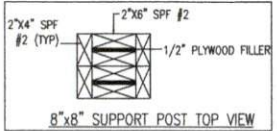
ELECTRICAL SCHEDULE A				ELECTRICAL SCHEDULE B			
CIRCUIT	NOMENCLATURE	BREAKER (AMPS)	WIRE (C/L)	CIRCUIT	NOMENCLATURE	BREAKER (AMPS)	WIRE (C/L)
1	GFCI PROTECTED	20 A	12-2 NM	1,3,5,6	LIGHTS & RECEPTS	20 A	12-2 NM
2/4	HVAC	80A(2P)	#2 #10 GRND.	2/4	HVAC	80A(2P)	#2 #10 GRND.
3,7	LIGHT, FAN, RECEPTS	20 A	12-2 NM				
5	RECEPTS	20 A	12-2 NM				
6	WATER HEATER	20 A	12-2 NM				
8	GFCI RECEPTS	20 A	12-2 NM				

ELECTRICAL PANEL SIZING		ELECTRICAL PANEL SIZING	
DESCRIPTION	KVA	DESCRIPTION	KVA
GENERAL LIGHTING	0.035 KW/SF x 854 SF x 1.25= 2.87	GENERAL LIGHTING	0.035 KW/SF x 854 SF x 1.25= 2.87
15 RECEPTS AT 180VA/1000=	2.7	15 RECEPTS AT 180VA/1000=	2.7
WATER HEATER 1.9 KW x 1.25=	2.38	HVAC	12.0
1 FAN AT 3 KW x 1.25=	3.75		
HVAC	10.80		
<b>TOTAL 19.23 KW</b>		<b>TOTAL 19.93 KW</b>	
<b>TOTAL 240 X 1000= 80.12 AMPS</b>		<b>TOTAL 240 X 1000= 86.37 AMPS</b>	
<b>INSTALL 100 AMP PANEL</b>		<b>INSTALL 100 AMP PANEL</b>	
<b>120/240 V 1P</b>		<b>120/240 V 1P</b>	

#	SIZE	JAMB	DESCRIPTION	HARDWARE
1	36"x80"	ALUM	ALUM w/ 4"x24" V.B. (SAFETY GLASS)	LEVER
2	36"x80"	PLASTIC	6 PANEL HOLLOW CORE	LEVER

#	SIZE	DESCRIPTION	FRAME/GLASS
1	24"x60"	VERTICAL SLIDE	VINYL/LOW-E INSULATED



EMC R. JOHNSON APPROVED 08 31 2022

KENNETH EARL DUNNOM, P.E. KENNETH EARL DUNNOM, P.E. KENNETH EARL DUNNOM, P.E. KENNETH EARL DUNNOM, P.E.



CONSULTING ENGINEER: WALTER E. WOOD, P.E. 165 W. LONGLEAF DR. SYLVESTER, GA 31791  
 WALTER E. WOOD 29735  
 08-31-2022



SUBMITTAL # TRC-2456 (1RR) PA/VA/GA/NC/OK (2022)
DATE: 8/4/22
STOCK FLOOR PLAN-PA/VA/GA/NC/OK
DRAWN BY: RJS
SCALE: NOTED
LOCATION: STOCK
SHEET #: 2 of 3



